



**Department of Economic Security**

**State of Arizona**

**Monthly Statistical Bulletin**

**OSPBI M&I**

**Phoenix, AZ  
October, 2007**

<http://www.azdes.gov/faa/Statistics.asp>

\*\*\*\* STATISTICAL BULLETIN \*\*\*\*  
ARIZONA DEPARTMENT OF ECONOMIC SECURITY  
FAMILY ASSISTANCE ADMINISTRATION  
BOX 6123, PHOENIX, ARIZONA 85005  
PHONE (602) 542-3678

OCTOBER 2007

THIS ISSUE OF THE STATISTICAL BULLETIN COMPARES OCTOBER 2007 DATA FOR EACH OF THE INDICATED PROGRAMS WITH THE INFORMATION FOR SEPTEMBER 2007 AND OCTOBER 2006. STATEWIDE SUMMARIES OF ACTIVITY WITHIN EACH OF THE SPECIFIC PROGRAMS FOR THIS REPORT PERIOD ARE DISCUSSED BELOW. THE TABLES COMPARE CURRENT AND PRIOR MONTH DATA. DISTRICT AND COUNTY COMPARISONS ARE PROVIDED WITHIN THIS BULLETIN

CASH ASSISTANCE (CA)

COMPARING TO SEPTEMBER 2007, OCTOBER 2007 CASES INCREASED BY 570 (1.57%) TO 36,911. RECIPIENTS INCREASED BY 1,249 (1.60%) TO 79,452. PAYMENTS INCREASED BY \$153,712 (1.58%) TO \$9,887,255. AVERAGE PAYMENT PER CASE INCREASED BY \$0.03 (0.01%) TO \$267.87. PAYMENT PER RECIPIENT DECREASED BY \$0.03 (0.02%) TO \$124.44.

COMPARING TO OCTOBER 2006, OCTOBER 2007 CASES DECREASED BY 823 (2.18%). RECIPIENTS DECREASED BY 2,969 (3.60%). TOTAL PAYMENTS DECREASED BY \$304,838 (2.99%). THE AVERAGE PAYMENT PER CASE DECREASED BY \$2.23 (0.83%). THE AVERAGE PAYMENT PER RECIPIENT INCREASED BY \$0.78 (0.66%).

CASH ASSISTANCE UNEMPLOYED PARENT PROGRAM (CA-UP)

COMPARING TO SEPTEMBER 2007, OCTOBER 2007 CASES INCREASED BY 15 (2.18%) TO 703. RECIPIENTS INCREASED BY 76 (2.85%) TO 2,739. PAYMENTS INCREASED BY \$3,229 (1.29%) TO \$253,719. AVERAGE PAYMENT PER CASE DECREASED BY \$3.17 (0.87%) TO \$360.91. PAYMENT PER RECIPIENT DECREASED BY \$1.43 (1.52%) TO \$92.63.

COMPARING TO OCTOBER 2006, OCTOBER 2007 CASES INCREASED BY 192 (37.57%). RECIPIENTS INCREASED BY 799 (41.19%). TOTAL PAYMENTS INCREASED BY \$68,180 (36.75%). THE AVERAGE PAYMENT PER CASE DECREASED BY \$2.19 (0.60%). THE AVERAGE PAYMENT PER RECIPIENT DECREASED BY \$3.01 (3.15%).

CASH ASSISTANCE WITH GRANT UNDER \$100 (CA-MOE)

COMPARING TO SEPTEMBER 2007, OCTOBER 2007 CASES INCREASED BY 19 (2.94%) TO 665. RECIPIENTS INCREASED BY 15 (1.12%) TO 1,357. PAYMENTS INCREASED BY \$2,005 (4.15%) TO \$50,279. AVERAGE PAYMENT PER CASE INCREASED BY \$0.88 (1.18%) TO \$75.61. AVERAGE PAYMENT PER RECIPIENT INCREASED BY \$1.08 (3.00%) TO \$37.05.

COMPARING TO OCTOBER 2006, OCTOBER 2007 CASES DECREASED BY 119 (15.18%). RECIPIENTS DECREASED BY 296 (17.91%). TOTAL PAYMENTS DECREASED BY \$5,909 (10.52%). THE AVERAGE PAYMENT PER CASE INCREASED BY \$3.94 (5.50%). THE AVERAGE PAYMENT PER RECIPIENT INCREASED BY \$3.06 (9.00%).

CASH ASSISTANCE UNEMPLOYED PARENT PROGRAM WITH GRANT UNDER \$100 (CA-UP-MOE) NEW PROGRAM STARTING 7/01

COMPARING TO SEPTEMBER 2007, OCTOBER 2007 CASES INCREASED BY 4 (40.00%) TO 14. RECIPIENTS INCREASED BY 23 (79.31%) TO 52. PAYMENTS INCREASED BY \$253 (43.32%) TO \$837. AVERAGE PAYMENT PER CASE INCREASED BY \$1.39 (2.38%) TO \$59.79. PAYMENT PER RECIPIENT DECREASED BY \$4.04 (20.06%) TO \$16.10.

COMPARING TO OCTOBER 2006, OCTOBER 2007 CASES INCREASED BY 6 (75.00%). RECIPIENTS INCREASED BY 28 (4.79%). TOTAL PAYMENTS INCREASED BY \$420 (100.72%). THE AVERAGE PAYMENT PER CASE INCREASED BY \$7.66 (14.69%). THE AVERAGE PAYMENT PER RECIPIENT DECREASED BY \$1.28 (7.36%).

GENERAL ASSISTANCE (GA)

COMPARING TO SEPTEMBER 2007, OCTOBER 2007 CASES INCREASED BY 52 (3.94%) TO 1,372. RECIPIENTS INCREASED BY 50 (3.77%) TO 1,377. PAYMENTS INCREASED BY \$7,667 (3.77%) TO \$210,911. AVERAGE PAYMENT PER CASE DECREASED BY \$0.24 (0.16%) TO \$153.73. AVERAGE PAYMENT PER RECIPIENT INCREASED BY \$0.01 (0.01%) TO \$153.17.

COMPARING TO OCTOBER 2006, OCTOBER 2007 CASES INCREASED BY 83 (6.44%). RECIPIENTS INCREASED BY 81 (6.25%). TOTAL PAYMENTS INCREASED BY \$14,991 (7.65%). THE AVERAGE PAYMENT PER CASE INCREASED BY \$1.74 (1.14%). THE AVERAGE PAYMENT PER RECIPIENT INCREASED BY \$2.00 (1.32%).

TUBERCULOSIS CONTROL PROGRAM (TC)

COMPARING TO SEPTEMBER 2007, OCTOBER 2007 CASES INCREASED BY 2 (18.18%) TO 13. RECIPIENTS INCREASED BY 2 (18.18%) TO 13. PAYMENTS INCREASED BY \$260 (21.76%) TO \$1,455. AVERAGE PAYMENT PER CASE INCREASED BY \$3.28 (3.02%) TO \$111.92. AVERAGE PAYMENT PER RECIPIENT INCREASED BY \$3.28 (3.02%) TO \$111.92.

COMPARING TO OCTOBER 2006, OCTOBER 2007 CASES DECREASED BY 5 (27.78%). RECIPIENTS DECREASED BY 5 (27.78%). TOTAL PAYMENTS DECREASED BY \$616 (29.74%). THE AVERAGE PAYMENT PER CASE DECREASED BY \$3.14 (2.73%). THE AVERAGE PAYMENT PER RECIPIENT DECREASED BY \$3.14 (2.73%).

SUPPLEMENTAL PAYMENTS PROGRAM (SPP)

AS A RESULT OF ARIZONA'S OMNIBUS BUDGET RECONCILIATION BILL, HB 2535, THE SUPPLEMENTAL PAYMENT PROGRAM (SPP) IS BEING SUSPENDED EFFECTIVE JULY, 2003 THROUGH JUNE, 2004.

FOOD STAMP PROGRAM (FS)

COMPARING TO SEPTEMBER 2007, OCTOBER 2007 FOOD STAMP HOUSEHOLDS INCREASED BY 4,799 (2.04%) TO 239,833. PERSONS RECEIVING FOOD STAMPS INCREASED BY 10,451 (1.82%) TO 585,720. TOTAL COUPON ISSUANCE INCREASED BY \$4,787,832 (8.54%) TO \$60,831,955. THE AVERAGE HOUSEHOLD ALLOTMENT INCREASED BY \$15.19 (6.37%) TO \$253.64. THE AVERAGE ALLOTMENT PER PERSON INCREASED BY \$6.44 (6.61%) TO \$103.86.

COMPARING TO OCTOBER 2006, OCTOBER 2007 FOOD STAMP HOUSEHOLDS INCREASED BY 21,916 (10.06%). PERSONS RECEIVING FOOD STAMPS INCREASED BY 50,573 (9.45%). TOTAL COUPON ISSUANCE INCREASED BY \$8,013,961 (15.17%). THE AVERAGE ALLOTMENT PER HOUSEHOLD INCREASED BY \$11.26 (4.65%). THE AVERAGE ALLOTMENT PER PERSON INCREASED BY \$5.16 (5.23%).

MEDICAL ASSISTANCE PROGRAM (MA) NEW TABLE INCLUDES PROP. 204 CATEGORIES

COMPARING TO SEPTEMBER 2007, OCTOBER 2007 TOTAL RECIPIENTS TOTAL RECIPIENTS INCREASED BY 5,953 (0.65%). SOBRA WOMEN AT 140% FPL INCREASED BY 56 (0.48%). SOBRA CHILDREN DECREASED BY 175 (0.28%). ADULTS W/O CHILD AT 100% INCREASED BY 311 (0.83%). FOSTER CARE INCREASED BY 101 (1.08%). 1931 AT 36% FPL INCREASED BY 1,500 (0.58%). EMERGENCY SERVICES DECREASED BY 362 (0.42%). INFANTS INCREASED BY 121 (0.24%). ADULT W/O CHILD AT 140% INCREASED BY 2,157 (2.51%). MEDICAL W/SPEND DOWN INCREASED BY 17 (0.31%). SOBRA WOMAN AT 100% DECREASED BY 59 (1.67%). SOBRA CHILD AT 100% INCREASED BY 528 (0.33%). TRANSITIONAL MEDICAL INCREASED BY 853 (2.02%). 1931 AT 100% INCREASED BY 569 (0.75%). YATI INCREASED BY 18 (7.69%). ALL OTHER CATEGORIES INCREASED BY 318 (1.46%).

COMPARING TO OCTOBER 2006, OCTOBER 2007 TOTAL RECIPIENTS TOTAL RECIPIENTS INCREASED BY 43,466 (4.98%). SOBRA WOMEN AT 140% FPL INCREASED BY 560 (4.97%). SOBRA CHILDREN INCREASED BY 3,263 (5.57%). ADULTS W/O CHILD AT 100% INCREASED BY 1,341 (3.69%). FOSTER CARE INCREASED BY 723 (8.26%). 1931 AT 36% FPL INCREASED BY 7,109 (2.81%). EMERGENCY SERVICES INCREASED BY 3,232 (3.89%). INFANTS INCREASED BY 1,435 (2.88%). ADULT W/O CHILD AT 140% INCREASED BY 8,715 (10.96%). MEDICAL W/SPEND DOWN DECREASED BY 111 (1.99%). SOBRA WOMAN AT 100% INCREASED BY 210 (6.44%). SOBRA CHILD AT 100% INCREASED BY 11,606 (7.84%). TRANSITIONAL MEDICAL DECREASED BY 2,689 (5.87%). 1931 AT 100% INCREASED BY 5,311 (7.47%). YATI INCREASED BY 63 (33.33%). ALL OTHER CATEGORIES INCREASED BY 2,698 (13.91%).

## TANF SUMMARY

### TABLES 1, 1A, 1B, & 1C: ARIZONA 1/

	OCTOBER 2007							SEPTEMBER 2007			OCTOBER 2006		
	FAMILIES (CASES)	PERSONS (RECIP.)	ADULTS	CHILDREN	TOTAL PAYMENTS	AVERAGE	AVERAGE	FAMILIES (CASES)	PERSONS (RECIP.)	TOTAL PAYMENTS	FAMILIES (CASES)	PERSONS (RECIP.)	TOTAL PAYMENTS
						PAYMENT/ CASE	PAYMENT/ RECIP.						
ARIZONA	38,293	83,600	20,855	62,745	10,192,090	266.16	121.91	608	1,363	159,199	(744)	(2,438)	(242,147)
DISTRICT I													
MARICOPA	20,810	45,881	10,631	35,250	5,579,127	268.10	121.60	522	1,157	139,550	(252)	(827)	(88,175)
DISTRICT II													
PIMA	7,414	15,679	4,169	11,510	1,948,759	262.85	124.29	30	41	(872)	(321)	(939)	(108,430)
DISTRICT III													
APACHE	151	334	105	229	38,207	253.03	114.39	(14)	(32)	(2,843)	22	56	6,554
COCONINO	273	582	142	440	66,846	244.86	114.86	(2)	(2)	(951)	9	17	544
NAVAJO	1,410	3,442	995	2,447	389,703	276.39	113.22	8	29	1,278	(45)	(170)	(18,427)
YAVAPAI	692	1,356	313	1,043	170,740	246.73	125.91	31	87	8,173	(1)	2	1,244
DISTRICT IV													
LA PAZ	248	533	168	365	63,537	256.20	119.21	(3)	(8)	(1,396)	(31)	(102)	(8,611)
MOHAVE	1,428	3,045	888	2,157	374,186	262.04	122.89	22	58	11,347	21	146	16,129
YUMA	1,359	3,040	737	2,303	363,882	267.76	119.70	7	39	4,731	(54)	(250)	(22,750)
DISTRICT V													
GILA	779	1,687	568	1,119	208,513	267.67	123.60	(3)	1	(26)	(64)	(225)	(19,362)
PINAL	2,041	4,630	1,231	3,399	551,530	270.23	119.12	15	16	3,291	128	319	41,216
DISTRICT VI													
COCHISE	983	1,935	512	1,423	252,352	256.72	130.41	9	(3)	(259)	(86)	(277)	(25,765)
GRAHAM	380	752	233	519	97,577	256.78	129.76	(15)	(21)	(3,197)	(67)	(165)	(17,215)
GREENLEE	55	118	33	85	15,185	276.09	128.69	(1)	(4)	(248)	9	18	3,374
SANTA CRUZ	270	586	130	456	71,946	266.47	122.77	2	5	621	(12)	(41)	(2,473)

1/EXCLUDES: PRIOR MONTH NET TOTALS OF 1,944 CASES; 4,635 RECIPIENTS; \$406,008.  
 1/GRANT DIVERSION TOTALS OF: 111 CASES;\$111,983.  
 ZERO PAY TOTALS OF 223 CASES; 586 RECIPIENTS.

	CURRENT MO. CASES	CURRENT MO. RECIP.	CURRENT MO. DOLLARS	PRIOR MO. CASES	PRIOR MO. RECIP.	PRIOR MO. DOLLARS
PASQUAYAUQUI	290	851	\$91,145	20	60	3,687
WM APACHE	746	1,941	\$221,063	25	67	4,748
SALT RIVER	98	333	\$29,844	13	42	2,382
NAVAJO	0	0	\$0	0	0	0
HOPÍ	145	412	\$35,321	2	5	101
<b>TOTAL</b>	<b>1,279</b>	<b>3,537</b>	<b>\$377,373</b>	<b>60</b>	<b>174</b>	<b>\$10,918</b>

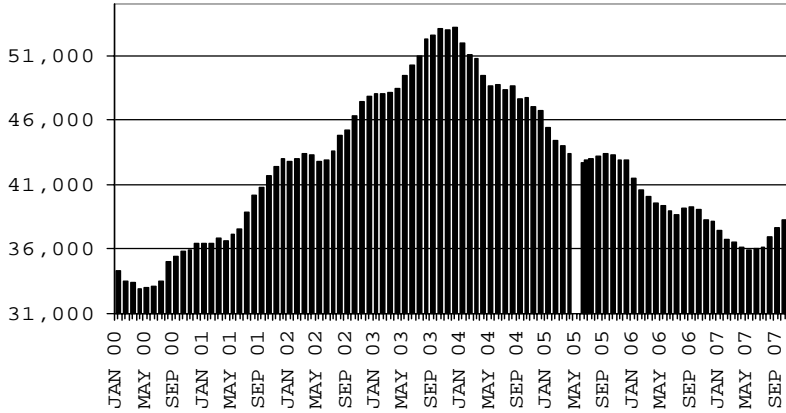
# TANF SUMMARY

## TABLES 1, 1A, 1B, & 1C

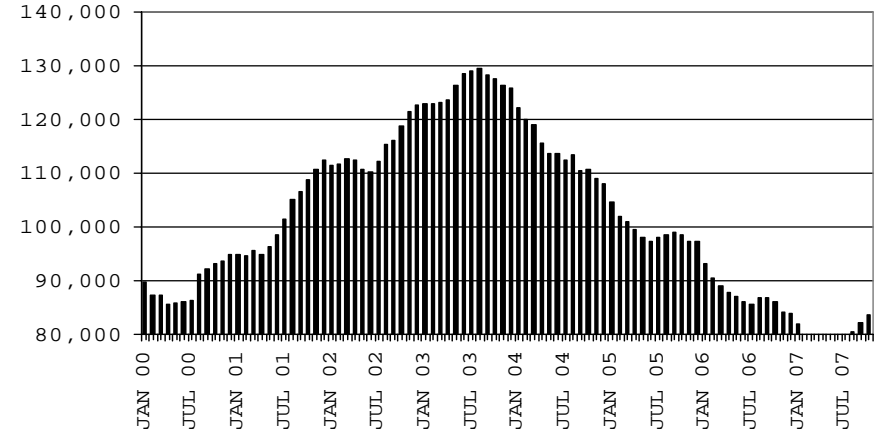
### COMPARISON OF CASES, RECIPIENTS, PAYMENTS & AVERAGE PAYMENTS

FOR 2000, 2001, 2002, 2003, 2004, 2005, 2006, & 2007

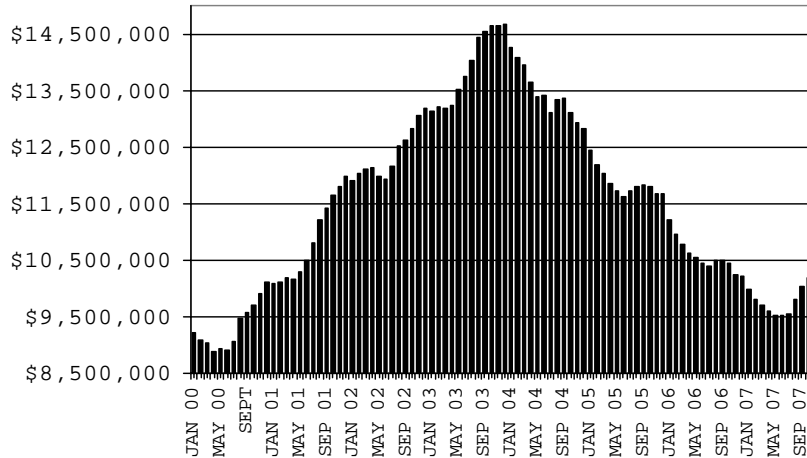
**CASES**



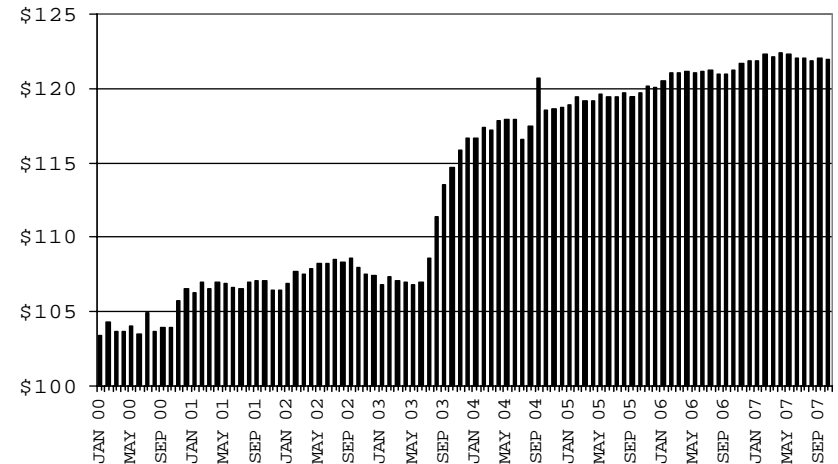
**RECIPIENTS**



**PAYMENTS**



**AVERAGE PAYMENTS PER RECIPIENT**



**TABLE 1**  
**CASH ASSISTANCE: ARIZONA 1/**

	OCTOBER 2007							CHANGE FROM					
								SEPTEMBER 2007			OCTOBER 2006		
	FAMILIES (CASES)	(RECIP.)	ADULTS	CHILDREN	TOTAL PAYMENTS	AVERAGE PAYMENT/ CASE	AVERAGE PAYMENT/ RECIP.	FAMILIES (CASES)	PERSONS (RECIP.)	TOTAL PAYMENTS	FAMILIES (CASES)	PERSONS (RECIP.)	TOTAL PAYMENTS
ARIZONA	36,911	79,452	19,273	60,179	9,887,255	267.87	124.44	570	1,249	153,712	(823)	(2,969)	(304,838)
DISTRICT I													
MARICOPA	20,163	44,025	10,016	34,009	5,452,863	270.44	123.86	473	1,024	130,426	(337)	(1,200)	(121,754)
DISTRICT II													
PIMA	7,157	14,933	3,864	11,069	1,894,875	264.76	126.89	19	15	(980)	(299)	(906)	(109,154)
DISTRICT III													
APACHE	136	296	92	204	35,878	263.81	121.21	(16)	(42)	(3,392)	21	55	6,198
COCONINO	265	555	132	423	65,529	247.28	118.07	(1)	(9)	(1,380)	11	12	(132)
NAVAJO	1,333	3,136	853	2,283	362,890	272.24	115.72	6	13	(92)	(57)	(214)	(21,293)
YAVAPAI	666	1,277	286	991	166,349	249.77	130.27	26	64	6,952	(4)	(39)	(1,328)
DISTRICT IV													
LA PAZ	237	499	153	346	60,918	257.04	122.08	1	0	(462)	(25)	(88)	(7,569)
MOHAVE	1,347	2,810	778	2,032	355,017	263.56	126.34	27	86	12,234	7	90	7,855
YUMA	1,290	2,819	652	2,167	344,703	267.21	122.28	22	79	6,446	(71)	(334)	(32,068)
DISTRICT V													
GILA	728	1,521	488	1,033	193,580	265.91	127.27	(6)	(8)	(695)	(70)	(261)	(24,529)
PINAL	1,953	4,324	1,105	3,219	527,938	270.32	122.09	22	46	6,569	137	338	41,040
DISTRICT VI													
COCHISE	952	1,857	480	1,377	246,113	258.52	132.53	3	(18)	(442)	(79)	(271)	(26,374)
GRAHAM	365	714	214	500	94,194	258.07	131.92	(13)	(16)	(2,915)	(63)	(149)	(17,584)
GREENLEE	55	118	33	85	15,185	276.09	128.69	0	(2)	(177)	11	26	3,429
SANTA CRUZ	264	568	127	441	71,223	269.78	125.39	7	17	1,620	(5)	(28)	(1,575)

1/EXCLUDES: PRIOR MONTH NET TOTALS OF: 1,083 CASES; 2,726 RECIPIENTS; \$324,090.  
GRANT DIVERSION TOTALS OF: 0 CASES; \$0  
ZERO PAY TOTALS OF 0 CASES; 0 RECIPIENTS.

	CURRENT MO. CASES	CURRENT MO. RECIP.	CURRENT MO. DOLLARS	PRIOR MO. CASES	PRIOR MO. RECIP.	PRIOR MO. DOLLARS
PASQUAYQUI	282	808	87,478	19	56	2,986
WM APACHE	703	1,759	204,319	20	49	4,039
SALT RIVER	98	333	29,844	13	42	2,382
NAVAJO	0	0	0	0	0	0
HOPÍ	145	412	35,321	2	5	101
<b>TOTAL</b>	<b>1,228</b>	<b>3,312</b>	<b>356,962</b>	<b>54</b>	<b>152</b>	<b>9,508</b>

CASES WITH GRANT UNDER \$100 (SEE TABLE 1B).

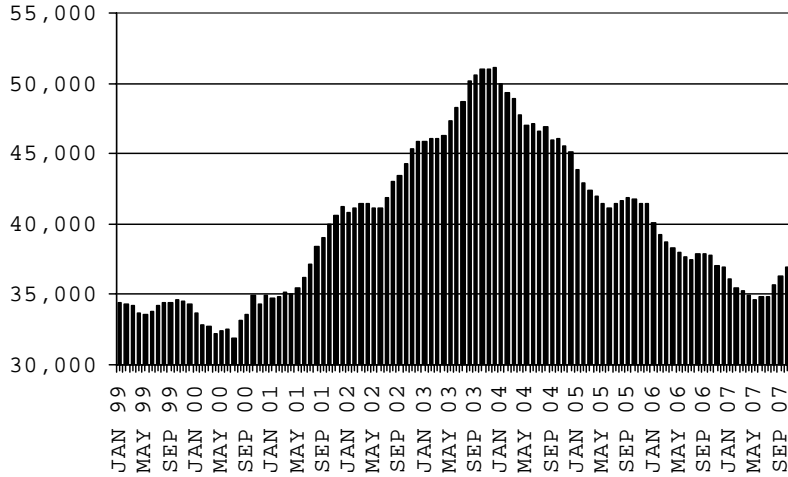
# CHART 1

## CASH ASSISTANCE PROGRAM

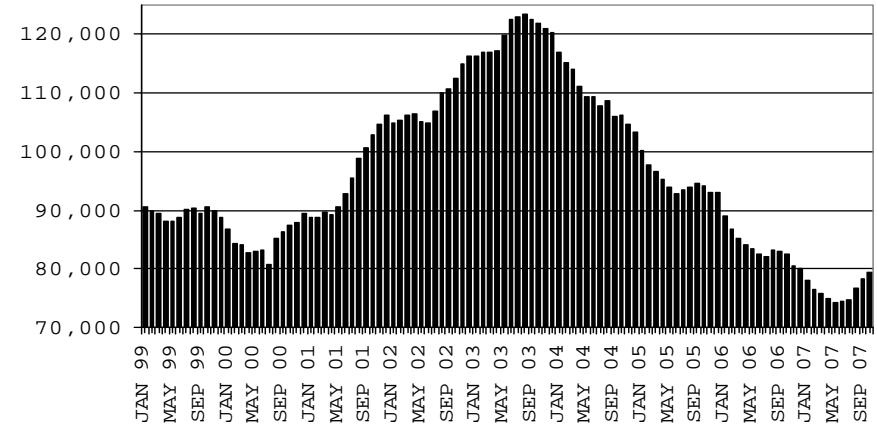
### COMPARISON OF CASES, RECIPIENTS, PAYMENTS & AVERAGE PAYMENTS

FOR 1999, 2000, 2001, 2002, 2003, 2004, 2005, 2006 & 2007

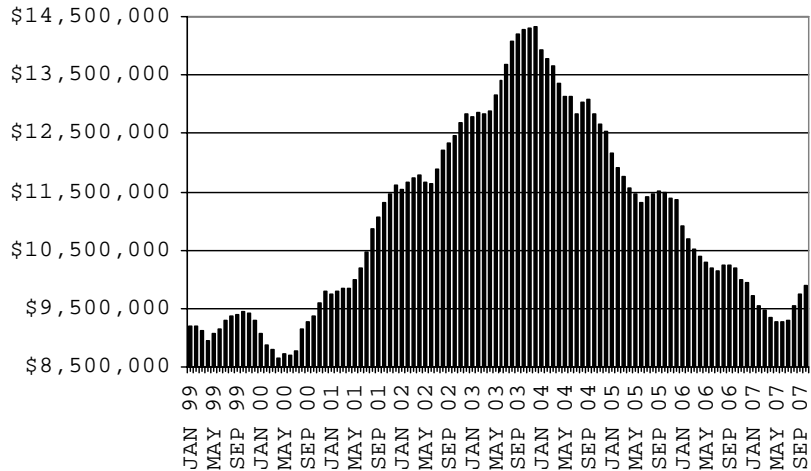
#### CASES



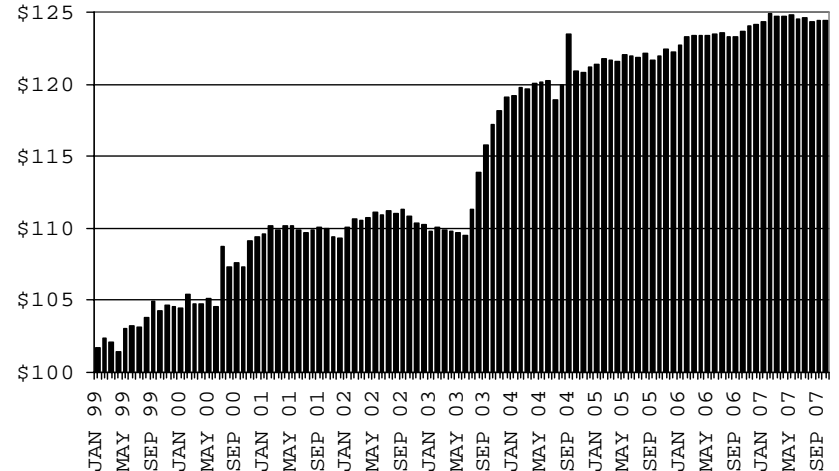
#### RECIPIENTS



#### PAYMENTS



#### AVERAGE PAYMENTS PER RECIPIENT



**TABLE 1A  
CA-UP**

**CASH ASSISTANCE UNEMPLOYED PARENT PROGRAM: ARIZONA 1**

	OCTOBER 2007							CHANGE FROM			OCTOBER 2006		
	FAMILIES (CASES)	PERSONS (RECIP.)	ADULTS	CHILDREN	TOTAL PAYMENTS	AVERAGE PAYMENT/ CASE	AVERAGE PAYMENT/ RECIP.	SEPTEMBER 2007			OCTOBER 2006		
								FAMILIES (CASES)	PERSONS (RECIP.)	TOTAL PAYMENTS	FAMILIES (CASES)	PERSONS (RECIP.)	TOTAL PAYMENTS
ARIZONA	703	2,739	1,202	1,537	253,719	360.91	92.63	15	76	3,229	192	799	68,180
DISTRICT I													
MARICOPA	273	1,062	428	634	98,900	362.27	93.13	24	92	6,658	92	388	33,642
DISTRICT II													
PIMA	127	481	221	260	44,046	346.82	91.57	2	4	218	13	44	1,989
DISTRICT III													
APACHE	4	18	8	10	1,397	349.25	77.61	0	5	102	0	(1)	44
COCONINO	3	16	6	10	1,046	348.67	65.38	2	12	628	3	16	1,046
NAVAJO	71	288	136	152	26,427	372.21	91.76	5	21	1,751	16	49	3,247
YAVAPAI	10	45	17	28	3,568	356.80	79.29	3	18	1,134	8	40	3,180
DISTRICT IV													
LA PAZ	7	28	12	16	2,384	340.57	85.14	(2)	(5)	(560)	(3)	(5)	(628)
MOHAVE	45	174	86	88	16,676	370.58	95.84	(2)	(12)	(710)	23	97	8,875
YUMA	46	178	72	106	17,276	375.57	97.06	(7)	(21)	(1,169)	22	100	9,637
DISTRICT V													
GILA	91	355	172	183	33,588	369.10	94.61	(11)	(40)	(4,081)	13	51	5,590
PINAL	37	134	71	63	13,522	365.46	100.91	(2)	(3)	15	11	50	5,043
	54	221	101	120	20,066	371.59	90.80	(9)	(37)	(4,096)	2	1	547
DISTRICT VI													
COCHISE	26	94	44	50	8,411	323.50	89.48	1	2	(742)	5	20	1,558
GRAHAM	15	55	25	30	4,751	316.73	86.38	3	10	(52)	4	19	993
GREENLEE	9	31	17	14	3,108	345.33	100.26	0	0	(105)	2	4	1,029
SANTA CRUZ	0	0	0	0	0	0.00	0.00	0	0	0	0	0	0
	2	8	2	6	552	276.00	69.00	(2)	(8)	(585)	(1)	(3)	(464)

1/EXCLUDES: PRIOR MONTH NET TOTALS OF: 70 CASES; 275 RECIPIENTS; \$30,870.  
GRANT DIVERSION TOTALS OF: 0 CASES; \$0.  
ZERO PAY TOTALS OF 0 CASES; 0 RECIPIENTS.

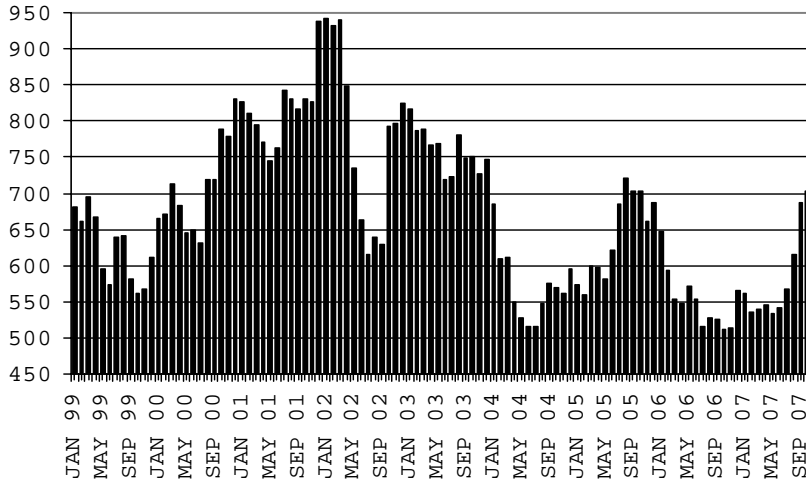
	CURRENT MO. CASES	CURRENT MO. RECIP.	CURRENT MO. DOLLARS	PRIOR MO. CASES	PRIOR MO. RECIP	PRIOR MO. DOLLARS
PASQUA/YAQUI	8	43	3,667	1	4	701
WM APACHE	43	182	16,744	5	18	709
SALT RIVER	0	0	0	0	0	0
NAVAJO	0	0	0	0	0	0
HOPi	0	0	0	0	0	0
<b>TOTAL</b>	<b>51</b>	<b>225</b>	<b>20,411</b>	<b>6</b>	<b>22</b>	<b>1,410</b>

CASES WITH GRANT UNDER \$100 (SEE TABLE 1C).

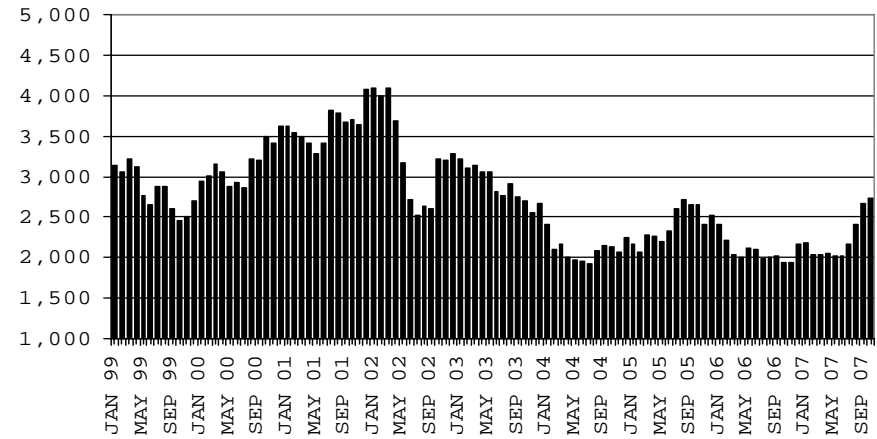
# CHART 1A

## CASH ASSISTANCE UNEMPLOYED PARENT PROGRAM COMPARISON OF CASES, RECIPIENTS, PAYMENTS & AVERAGE PAYMENTS FOR 1999, 2000, 2001, 2002, 2003, 2004, 2005, 2006 & 2007

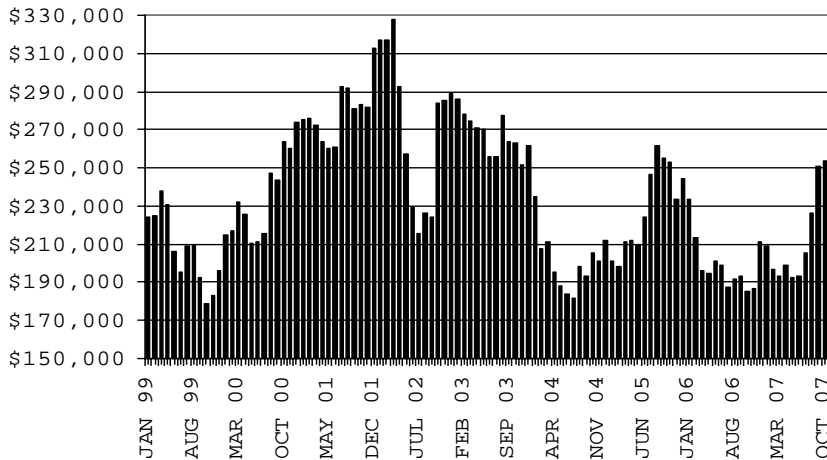
### CASES



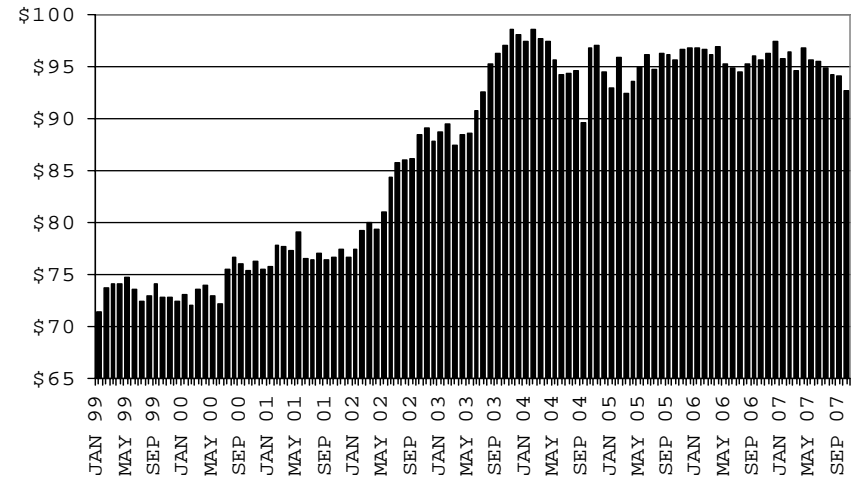
### RECIPIENTS



### PAYMENTS



### AVERAGE PAYMENTS PER RECIPIENT





**TABLE 1B 1/**

**CASH ASSISTANCE: ARIZONA  
CASES WITH GRANT UNDER \$100**

	OCTOBER 2007							CHANGE FROM					
								SEPTEMBER 2007			OCTOBER 2006		
	FAMILIES (CASES)	PERSONS (RECIP.)	ADULTS	CHILDREN	TOTAL PAYMENTS	AVERAGE PAYMENT/ CASE	AVERAGE PAYMENT/ RECIP.	FAMILIES (CASES)	PERSONS (RECIP.)	TOTAL PAYMENTS	FAMILIES (CASES)	PERSONS (RECIP.)	TOTAL PAYMENTS
ARIZONA	665	1,357	363	994	50,279	75.61	37.05	19	15	2,005	(119)	(296)	(5,909)
DISTRICT I													
MARICOPA	369	776	182	594	27,059	73.33	34.87	24	31	2,459	(10)	(29)	(321)
DISTRICT II													
PIMA	126	246	78	168	9,594	76.14	39.00	7	10	(257)	(36)	(85)	(1,353)
DISTRICT III													
APACHE	11	20	5	15	932	84.73	46.60	2	5	447	2	5	345
COCONINO	5	11	4	7	271	54.20	24.64	(3)	(5)	(199)	(5)	(11)	(370)
NAVAJO	5	14	4	10	291	58.20	20.79	(4)	(9)	(476)	(5)	(9)	(476)
YAVAPAI	16	34	10	24	823	51.44	24.21	2	5	87	(5)	1	(608)
DISTRICT IV													
LA PAZ	4	6	3	3	235	58.75	39.17	(2)	(3)	(374)	(3)	(9)	(414)
MOHAVE	34	57	22	35	2,422	71.24	42.49	(4)	(17)	(188)	(11)	(45)	(672)
YUMA	22	41	13	28	1,860	84.55	45.37	(7)	(15)	(539)	(6)	(18)	(362)
DISTRICT V													
GILA	14	32	9	23	1,411	100.79	44.09	5	12	654	(4)	(11)	210
PINAL	33	80	23	57	3,447	104.45	43.09	2	7	818	(12)	(25)	(450)
DISTRICT VI													
COCHISE	16	23	7	16	1,488	93.00	64.70	3	5	235	(11)	(25)	(384)
GRAHAM	6	7	2	5	275	45.83	39.29	(2)	(5)	(177)	(5)	(17)	(565)
GREENLEE	0	0	0	0	0	0.00	0.00	(1)	(2)	(71)	(2)	(8)	(55)
SANTA CRUZ	4	10	1	9	171	42.75	17.10	(3)	(4)	(414)	(6)	(10)	(434)

EXCLUDES: PRIOR MONTH NET TOTALS OF 767 CASES; 1,546 RECIPIENTS; \$49,890.

# CHART 1B

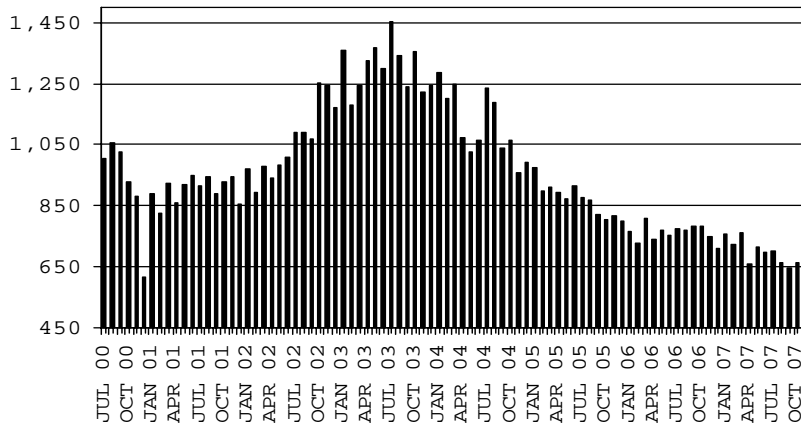
## CASH ASSISTANCE PROGRAM

### CASES WITH GRANT UNDER \$100

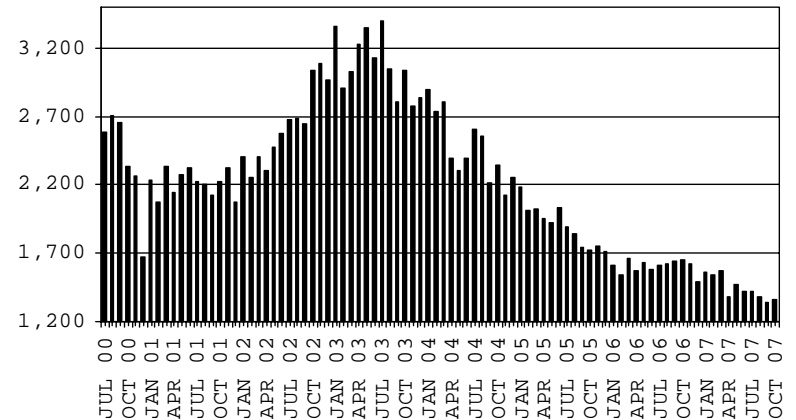
#### COMPARISON OF CASES, RECIPIENTS, PAYMENTS & AVERAGE PAYMENTS

FOR 2000, 2001, 2002, 2003, 2004, 2005, 2006 & 2007

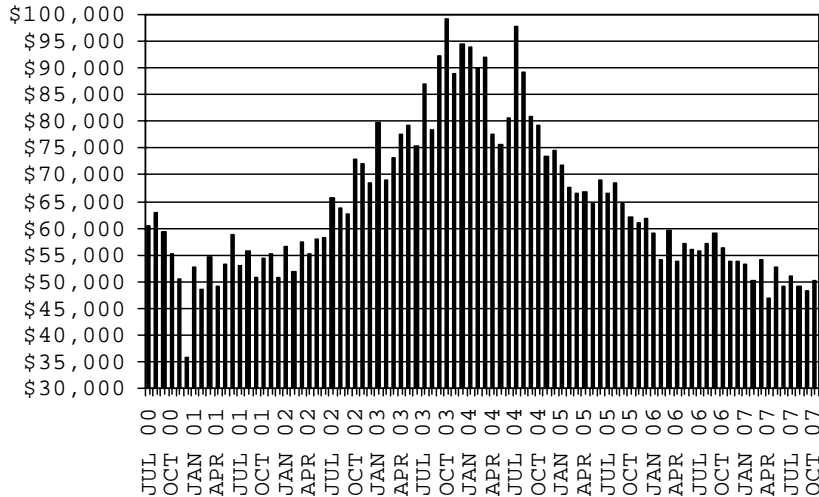
**CASES**



**RECIPIENTS**



**PAYMENTS**



**AVERAGE PAYMENTS PER RECIPIENT**

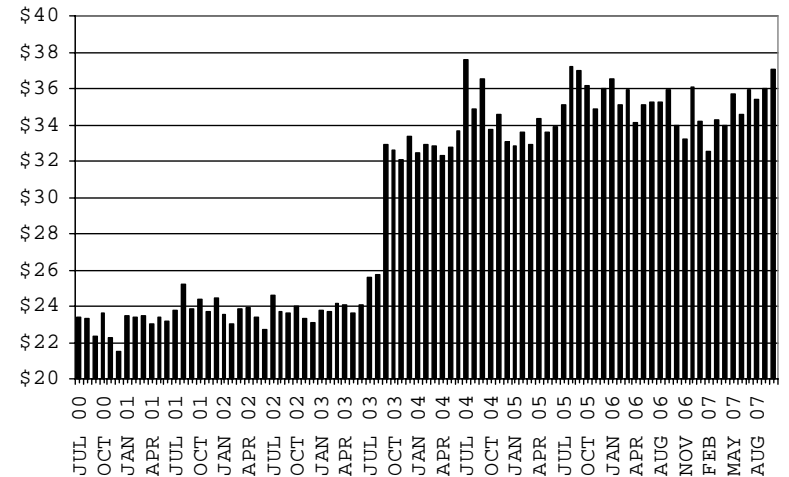


TABLE 1C 1/

CASH ASSISTANCE UNEMPLOYED PARENT PROGRAM: ARIZONA  
 CASES WITH GRANT UNDER \$100

	OCTOBER 2007							CHANGE FROM			OCTOBER 2006		
					AVERAGE	AVERAGE	SEPTEMBER 2007			OCTOBER 2006			
	FAMILIES (CASES)	PERSONS (RECIP.)	ADULTS	CHILDREN	TOTAL PAYMENTS	PAYMENT/ CASE	PAYMENT/ RECIP.	FAMILIES (CASES)	PERSONS (RECIP.)	TOTAL PAYMENTS	FAMILIES (CASES)	PERSONS (RECIP.)	TOTAL PAYMENTS
ARIZONA	14	52	17	35	837	59.79	16.10	4	23	253	6	28	420
DISTRICT I													
MARICOPA	5	18	5	13	305	61.00	16.94	1	10	7	3	14	258
DISTRICT II													
PIMA	4	19	6	13	244	61.00	12.84	2	12	147	1	8	88
DISTRICT III													
APACHE	0	0	0	0	0	0.00	0.00	0	0	0	(1)	(3)	(33)
COCONINO	0	0	0	0	0	0.00	0.00	0	0	0	0	0	0
NAVAJO	1	4	2	2	95	95.00	23.75	1	4	95	1	4	95
YAVAPAI	0	0	0	0	0	0.00	0.00	0	0	0	0	0	0
DISTRICT IV													
LA PAZ	0	0	0	0	0	0.00	0.00	0	0	0	0	0	0
MOHAVE	2	4	2	2	71	35.50	17.75	1	1	11	2	4	71
YUMA	1	2	0	2	43	43.00	21.50	(1)	(4)	(7)	1	2	43
DISTRICT V													
GILA	0	0	0	0	0	0.00	0.00	0	0	0	(1)	(3)	(86)
PINAL	1	5	2	3	79	79.00	15.80	0	0	0	1	5	79
DISTRICT VI													
COCHISE	0	0	0	0	0	0.00	0.00	0	0	0	0	0	0
GRAHAM	0	0	0	0	0	0.00	0.00	0	0	0	(1)	(3)	(95)
GREENLEE	0	0	0	0	0	0.00	0.00	0	0	0	0	0	0
SANTA CRUZ	0	0	0	0	0	0.00	0.00	0	0	0	0	0	0

EXCLUDES: PRIOR MONTH NET TOTALS OF 24 CASES; 88 RECIPIENTS; \$1,158.

12/17/2007

# CHART 1C

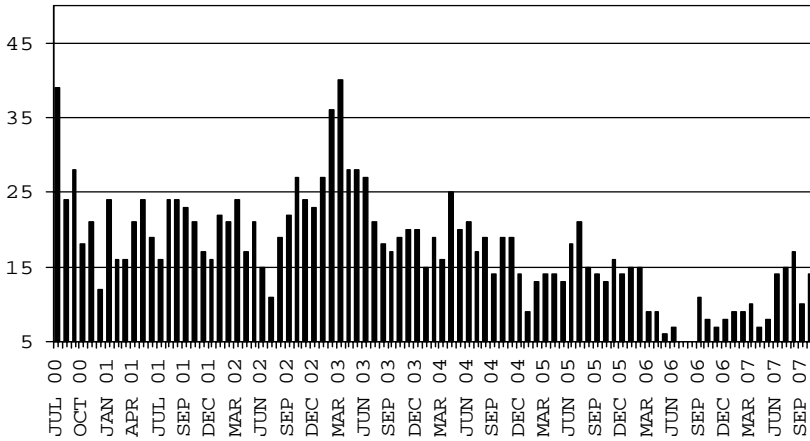
## CASH ASSISTANCE UNEMPLOYED PARENT PROGRAM

### CASES WITH GRANT UNDER \$100

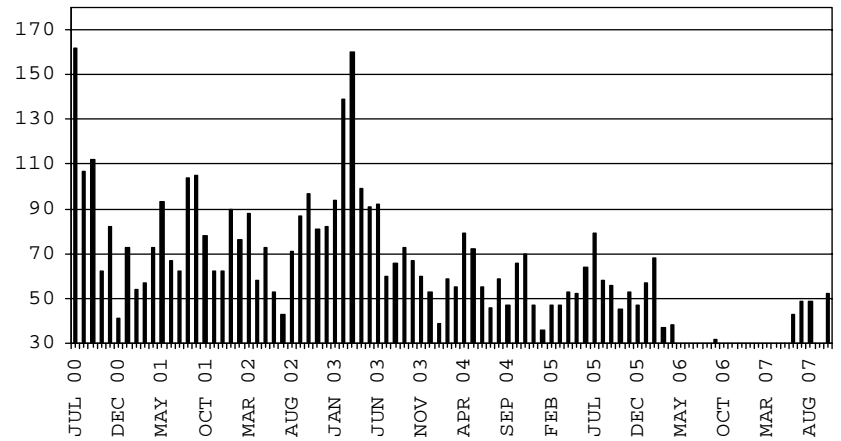
#### COMPARISON OF CASES, RECIPIENTS, PAYMENTS & AVERAGE PAYMENTS

FOR 2000, 2001, 2002, 2003, 2004, 2005, 2006 & 2007

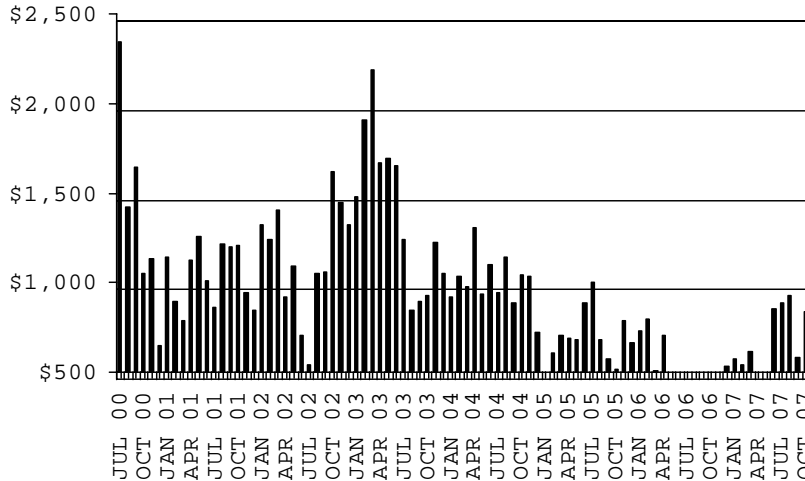
**CASES**



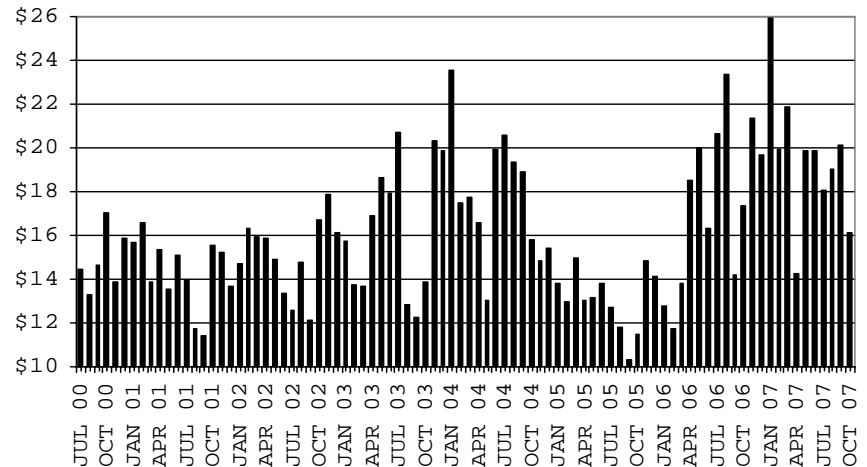
**RECIPIENTS**



**PAYMENTS**



**AVERAGE PAYMENTS PER RECIPIENT**



**TABLE 2**  
**GENERAL ASSISTANCE: ARIZONA 1/**

	CHANGE FROM										
	OCTOBER 2007					SEPTEMBER 2007			OCTOBER 2006		
	NUMBER OF CASES	PERSONS (RECIP.)	TOTAL PAYMENTS	AVERAGE PAYMENT/ CASE	AVERAGE PAYMENT/ RECIP.	NUMBER OF CASES	PERSONS (RECIP.)	TOTAL PAYMENTS	NUMBER OF CASES	PERSONS (RECIP.)	TOTAL PAYMENTS
ARIZONA	1,372	1,377	210,911	153.73	153.17	52	50	7,667	83	81	14,991
DISTRICT I											
MARICOPA	581	581	89,243	153.60	153.60	9	9	809	53	51	9,259
DISTRICT II											
PIMA	356	356	53,506	150.30	150.30	22	21	3,421	25	23	3,246
DISTRICT III											
APACHE	8	9	1,314	164.25	146.00	(2)	(2)	(216)	(7)	(8)	(692)
COCONINO	23	24	3,389	147.35	141.21	0	0	(62)	10	11	1,530
NAVAJO	40	40	6,109	152.73	152.73	7	7	920	17	16	2,770
YAVAPAI	54	55	8,334	154.33	151.53	1	1	33	(5)	(4)	(832)
DISTRICT IV											
LA PAZ	109	111	16,484	151.23	148.50	0	0	93	(31)	(29)	(5,126)
MOHAVE	14	15	2,027	144.79	135.13	3	3	389	9	10	1,292
YUMA	66	67	10,415	157.80	155.45	(5)	(5)	(735)	(7)	(6)	(1,109)
	29	29	4,042	139.38	139.38	2	2	439	(33)	(33)	(5,309)
DISTRICT V											
GILA	133	133	21,510	161.73	161.73	3	2	815	33	33	6,440
PINAL	31	31	4,778	154.13	154.13	4	4	624	13	13	2,322
	102	102	16,732	164.04	164.04	(1)	(2)	191	20	20	4,118
DISTRICT VI											
COCHISE	68	68	11,022	162.09	162.09	12	12	1,854	(12)	(12)	(1,604)
GRAHAM	52	52	8,480	163.08	163.08	6	6	977	(5)	(5)	(510)
GREENLEE	9	9	1,492	165.78	165.78	3	3	519	(5)	(5)	(800)
SANTA CRUZ	3	3	454	151.33	151.33	2	2	281	1	1	108
	4	4	596	149.00	149.00	1	1	77	(3)	(3)	(402)

1/EXCLUDES: PRIOR MONTH NET TOTALS OF : 246 CASES; 246 RECIPIENTS; \$56,625.  
REFUGEE RESETTLEMENT PROGRAM: 108 CASES; 171 RECIPIENTS; \$29,065.

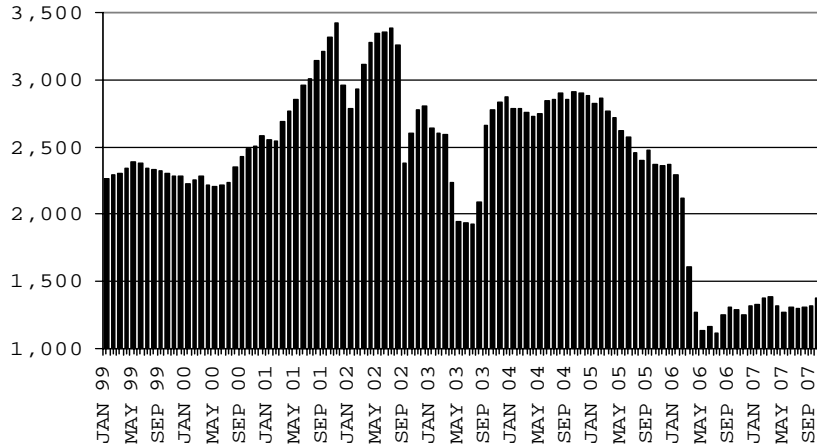
# CHART 2

## GENERAL ASSISTANCE PROGRAM

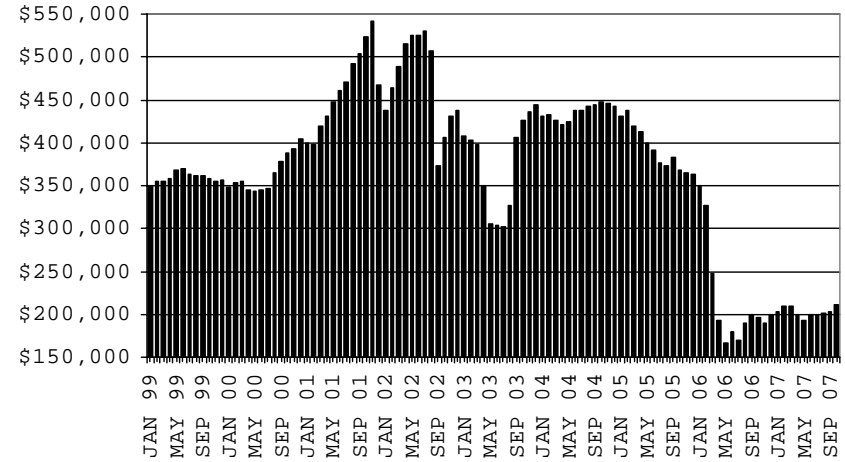
### COMPARISON OF CASES, PAYMENTS & AVERAGE PAYMENTS

FOR 1999, 2000, 2001, 2002, 2003, 2004, 2005, 2006 & 2007

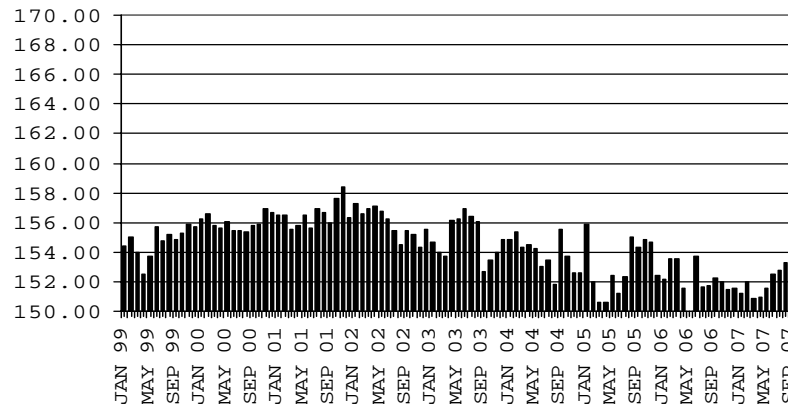
**CASES**



**PAYMENTS**



**AVERAGE PAYMENT PER CASE**



**TABLE 4**  
**TUBERCULOSIS CONTROL: ARIZONA 1/**

	OCTOBER 2007					CHANGE FROM					
						SEPTEMBER 2007			OCTOBER 2006		
	NUMBER OF CASES	PERSONS (RECIP.)	TOTAL PAYMENTS	AVERAGE PAYMENT/ CASE	AVERAGE PAYMENT/ RECIP.	NUMBER OF CASES	PERSONS (RECIP.)	TOTAL PAYMENTS	NUMBER OF CASES	PERSONS (RECIP.)	TOTAL PAYMENTS
ARIZONA	13	13	1,455	111.92	111.92	2	2	260	(5)	(5)	(616)
DISTRICT I											
MARICOPA	12	12	1,347	112.25	112.25	1	1	152	(5)	(5)	(616)
DISTRICT II											
PIMA	0	0	0	0.00	0.00	0	0	0	(1)	(1)	(108)
DISTRICT III											
APACHE	0	0	0	0.00	0.00	0	0	0	0	0	0
COCONINO	0	0	0	0.00	0.00	0	0	0	0	0	0
NAVAJO	0	0	0	0.00	0.00	0	0	0	0	0	0
YAVAPAI	1	1	108	108.00	108.00	1	1	108	1	1	108
DISTRICT IV											
LA PAZ	0	0	0	0.00	0.00	0	0	0	0	0	0
MOHAVE	0	0	0	0.00	0.00	0	0	0	0	0	0
YUMA	0	0	0	0.00	0.00	0	0	0	0	0	0
DISTRICT V											
GILA	0	0	0	0.00	0.00	0	0	0	0	0	0
PINAL	0	0	0	0.00	0.00	0	0	0	0	0	0
DISTRICT VI											
COCHISE	0	0	0	0.00	0.00	0	0	0	0	0	0
GRAHAM	0	0	0	0.00	0.00	0	0	0	0	0	0
GREENLEE	0	0	0	0.00	0.00	0	0	0	0	0	0
SANTA CRUZ	0	0	0	0.00	0.00	0	0	0	0	0	0

1/EXCLUDES: PRIOR MONTH NET TOTALS OF : 1 CASES; 1 RECIPIENTS; \$61.

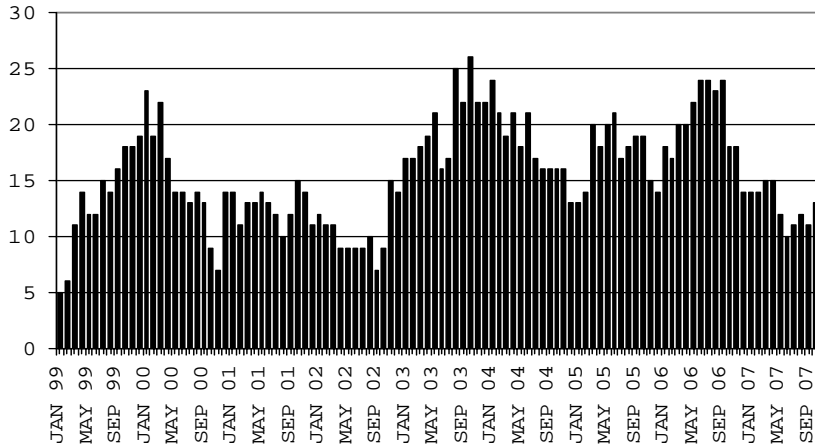
# CHART 4

## TUBERCULOSIS CONTROL PROGRAM

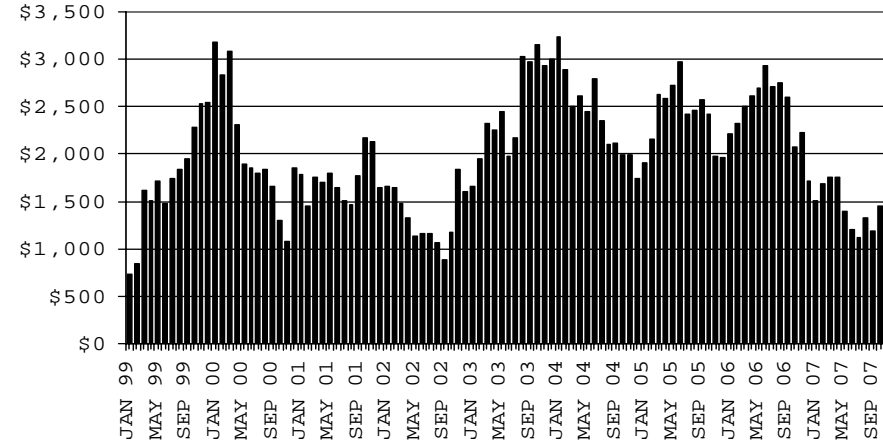
### COMPARISON OF CASES, PAYMENTS & AVERAGE PAYMENTS

FOR 1999, 2000, 2001, 2002, 2003, 2004, 2005, 2006 & 2007

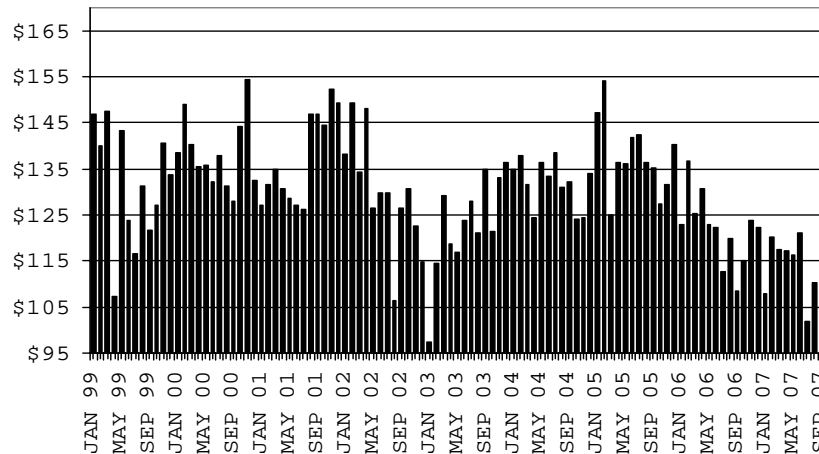
**CASES**



**PAYMENTS**



**AVERAGE PAYMENT PER CASE**





**TABLE 5**

**SUPPLEMENTAL PAYMENTS PROGRAM: ARIZONA 1/  
 BASED ON HB 2535 SPP IS SUSPENDED FROM JULY, 2003 THROUGH JUNE, 2004**

CHANGE FROM

	OCTOBER 2007			SEPTEMBER 2007		OCTOBER 2006	
	NUMBER OF PAYMENTS	TOTAL PAYMENTS	AVERAGE PAYMENT	NUMBER OF PAYMENTS	TOTAL PAYMENTS	NUMBER OF PAYMENTS	TOTAL PAYMENTS
ARIZONA	0	0	0	0	0	0	0
DISTRICT I							
MARICOPA	0	0	0	0	0	0	0
DISTRICT II							
PIMA	0	0	0	0	0	0	0
DISTRICT III	0	0	0	0	0	0	0
APACHE	0	0	0	0	0	0	0
COCONINO	0	0	0	0	0	0	0
NAVAJO	0	0	0	0	0	0	0
YAVAPAI	0	0	0	0	0	0	0
DISTRICT IV	0	0	0	0	0	0	0
LA PAZ	0	0	0	0	0	0	0
MOHAVE	0	0	0	0	0	0	0
YUMA	0	0	0	0	0	0	0
DISTRICT V	0	0	0	0	0	0	0
GILA	0	0	0	0	0	0	0
PINAL	0	0	0	0	0	0	0
DISTRICT VI	0	0	0	0	0	0	0
COCHISE	0	0	0	0	0	0	0
GRAHAM	0	0	0	0	0	0	0
GREENLEE	0	0	0	0	0	0	0
SANTA CRUZ	0	0	0	0	0	0	0

1/EXCLUDES: PRIOR MONTH NET TOTALS OF : 0 CASES (PERSONS); \$0.  
 1/TABLE 5 IS BASED ON THE LOCATION OF THE OFFICE THAT PROCEEDS THE APPLICATION.

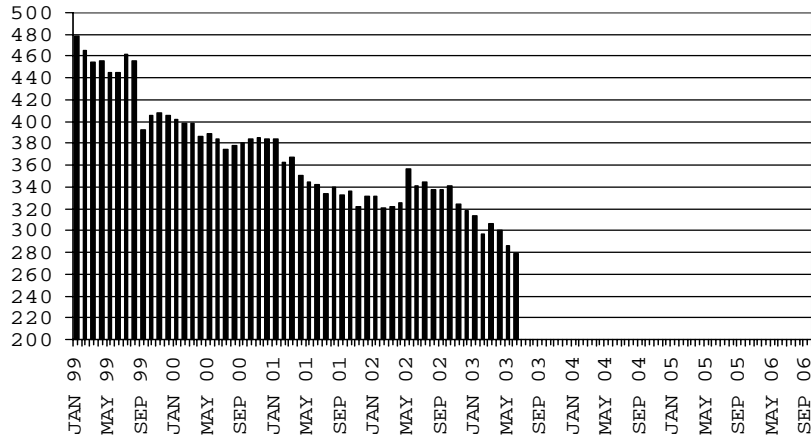
# CHART 5

## SUPPLEMENTAL PAYMENTS PROGRAM

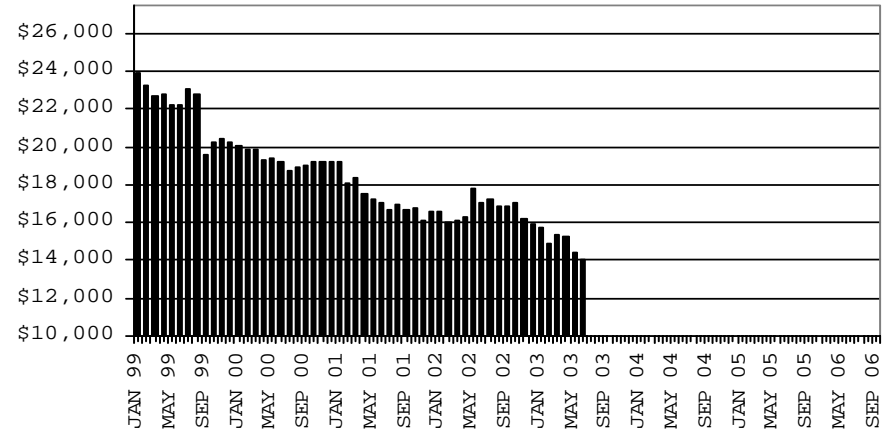
### COMPARISON OF CASES, PAYMENTS & AVERAGE PAYMENTS

FOR 1999, 2000, 2001, 2002, 2003, 2004, 2005, 2006 & 2007

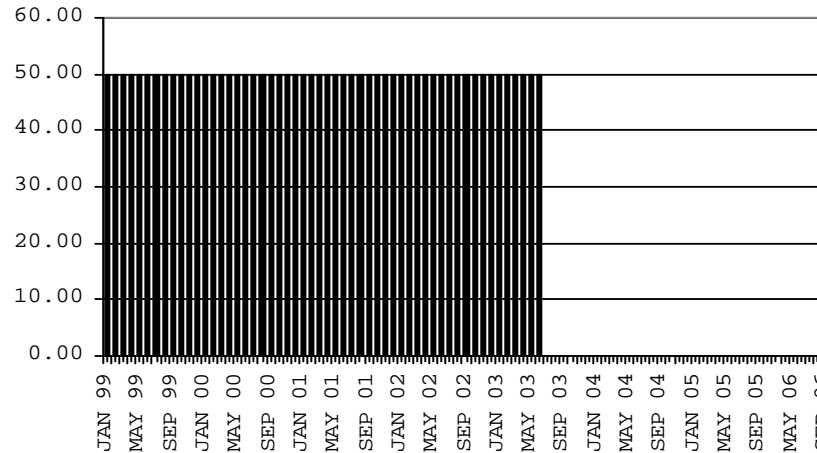
**CASES**



**PAYMENTS**



**AVERAGE PAYMENT PER CASE**



**TABLE 6**  
**FOOD STAMP PROGRAM: ARIZONA 1/**

	CHANGE FROM											
	OCTOBER 2007					SEPTEMBER 2007			OCTOBER 2006			
	HOUSEHOLDS	PERSONS	TOTAL COUPON ISSUANCE	AVERAGE ALLOT./ HOUSEHOLD	AVERAGE ALLOT./ PERSON	HOUSEHOLDS	PERSONS	TOTAL COUPON ISSUANCE	HOUSEHOLDS	PERSONS	TOTAL COUPON ISSUANCE	TOTAL COUPON ISSUANCE
ARIZONA	239,833	585,720	60,831,955	253.64	103.86	4,799	10,451	4,787,832	21,916	50,573	8,013,961	
DISTRICT I												
MARICOPA	119,210	290,858	30,827,941	258.60	105.99	2,919	6,935	2,585,711	12,081	29,017	4,445,477	
DISTRICT II												
PIMA	42,817	98,211	10,241,567	239.19	104.28	884	1,789	815,587	3,365	6,809	1,154,627	
DISTRICT III												
APACHE	6,265	19,520	1,912,066	305.20	97.95	(73)	(237)	91,530	139	274	135,907	
COCONINO	5,389	15,894	1,535,852	285.00	96.63	66	96	104,911	472	990	176,232	
NAVAJO	9,348	26,373	2,609,343	279.13	98.94	(11)	(188)	144,436	725	1,997	334,265	
YAVAPAI	6,518	13,298	1,356,475	208.11	102.01	152	411	137,546	552	1,291	197,388	
DISTRICT IV												
LA PAZ	1,269	2,836	294,089	231.75	103.70	3	16	13,001	43	169	16,538	
MOHAVE	10,787	22,921	2,421,535	224.49	105.65	313	611	211,513	1,235	2,730	379,374	
YUMA	10,559	28,751	2,796,123	264.81	97.25	64	86	183,278	739	1,624	278,774	
DISTRICT V												
GILA	15,817	39,198	4,096,891	259.02	104.52	255	461	281,853	2,100	5,178	710,256	
PINAL	3,509	8,222	864,516	246.37	105.15	39	59	55,670	184	252	66,811	
	12,308	30,976	3,232,375	262.62	104.35	216	402	226,183	1,916	4,926	643,445	
DISTRICT VI												
COCHISE	11,854	27,860	2,740,073	231.15	98.35	227	471	218,466	465	494	185,123	
GRAHAM	6,870	15,245	1,526,877	222.25	100.16	139	200	117,845	332	218	96,138	
GREENLEE	2,100	4,983	492,248	234.40	98.79	50	172	47,341	(4)	(100)	10,566	
SANTA CRUZ	256	549	56,207	219.56	102.38	(5)	(3)	2,810	(23)	(58)	(1,163)	
	2,628	7,083	664,741	252.95	93.85	43	102	50,470	160	434	79,582	

1/EXCLUDES: PRIOR MONTH NET TOTALS OF : 8,151 CASES; 21,253 RECIPIENTS; \$1,047,001.  
 AGED CANCELATIONS: 0 CASES; 0 RECIPIENTS; 0.  
 FS COUPON CONVERSIONS: 0 CASES; 0 RECIPIENTS; \$0.  
 FS REINSTATED: 0 CASES; \$0.  
 FS ZERO PAY: 0 CASES; 0 RECIPIENTS.

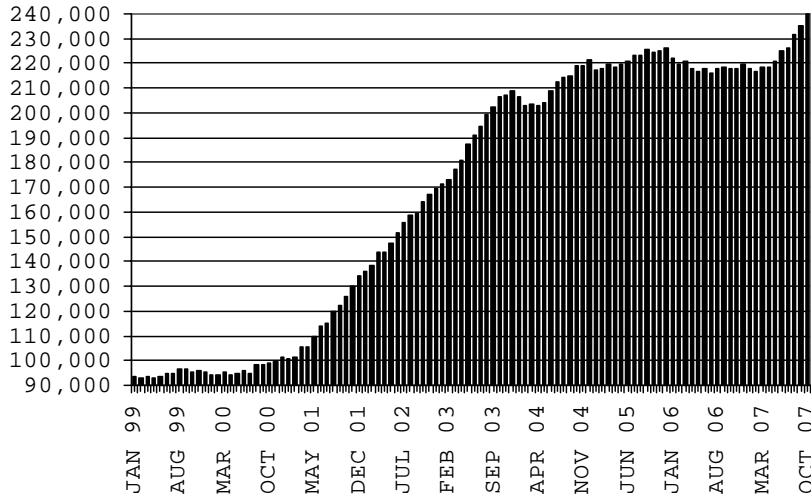
# CHART 6

## FOOD STAMPS PROGRAM

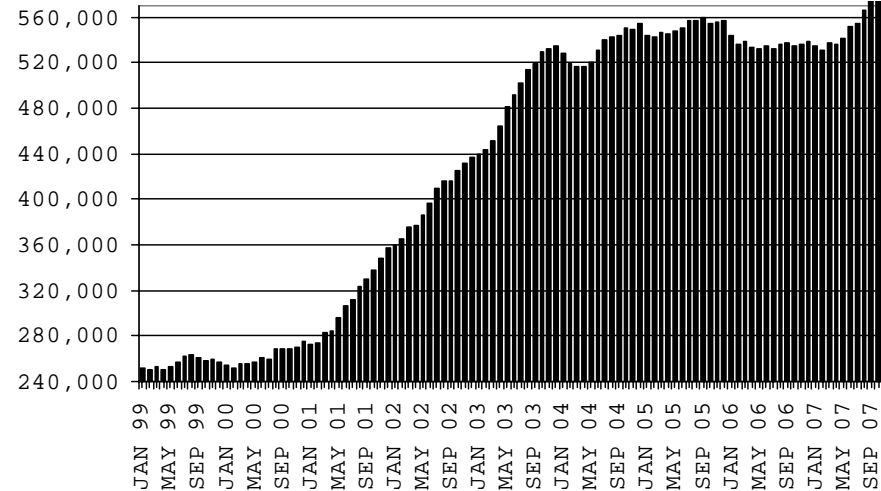
### COMPARISON OF HOUSEHOLDS, RECIPIENTS, PAYMENTS & AVERAGE PAYMENTS

FOR 1999, 2000, 2001, 2002, 2003, 2004, 2005, 2006 & 2007

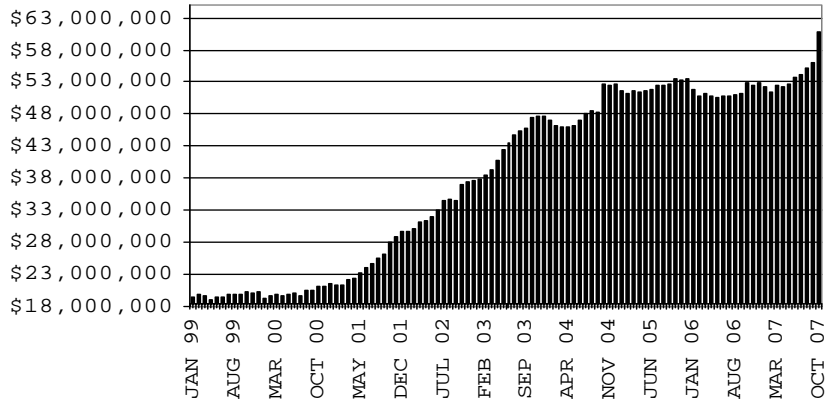
#### HOUSEHOLDS



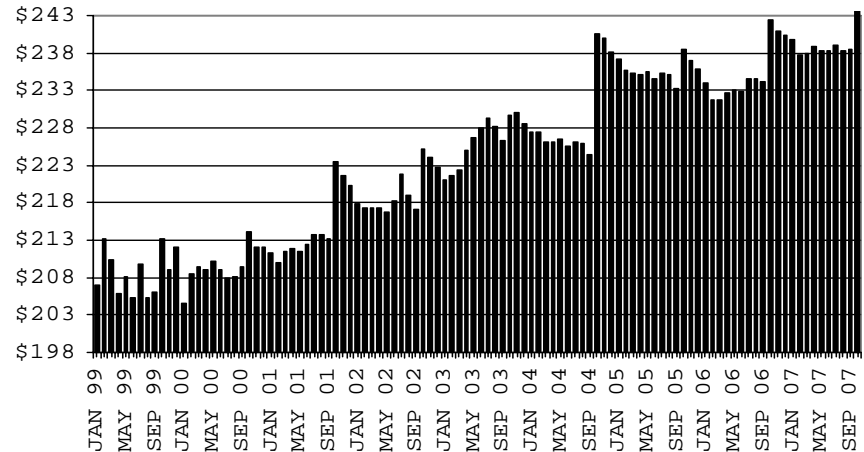
#### RECIPIENTS



#### TOTAL PAYMENTS



#### AVERAGE PAYMENT PER HOUSEHOLD



**TABLE 7A**  
**MEDICAL ASSISTANCE PROGRAM**  
**RECIPIENTS**

**OCTOBER 2007**

	SOBRA WOMAN 133% FPL	SOBRA CHILD	ADULT W/O CHILD 100% FPL	FOSTER CARE	1931 36% FPL	FEDERAL EMERGENCY SERVICES	INFANTS	ADULT W/O CHILD 40% FPL	MEDICAL W/SPEND DOWN	SOBRA WOMAN 100% FPL	SOBRA CHILD 100% FPL	TRANSITIONAL MEDICAL T1 - T4	1931 100% FPL	YATI	OTHER	TOTAL RECIPIENTS
ARIZONA	11,819	61,882	37,719	9,476	259,752	86,312	51,204	88,215	5,469	3,469	159,591	43,116	76,410	252	22,088	916,774
DISTRICT I																
MARICOPA	6,091	34,206	15,937	4,741	134,395	66,366	30,880	38,366	3,022	1,742	88,045	21,447	35,198	119	10,824	491,379
DISTRICT II																
PIMA	1,831	9,445	7,370	2,663	40,987	10,770	7,183	16,254	779	552	25,122	7,078	13,738	80	3,967	147,819
DISTRICT III																
APACHE	267	1,353	845	39	10,436	94	989	4,213	63	102	3,833	1,156	2,339	0	349	26,078
COCONINO	383	1,422	1,175	129	6,886	507	1,180	2,840	87	108	3,576	1,286	2,097	11	341	22,028
NAVAJO	372	2,135	1,313	111	10,947	325	1,380	4,643	140	140	4,389	1,532	2,727	3	523	30,680
YAVAPAI	469	1,802	1,673	400	5,471	1,578	1,423	2,771	281	97	3,923	1,333	2,343	15	901	24,480
DISTRICT IV																
LA PAZ	36	229	199	18	1,225	197	179	546	26	18	597	195	326	0	138	3,929
MOHAVE	490	2,089	1,951	227	9,171	980	1,612	4,463	319	168	6,317	1,868	3,540	2	1,185	34,382
YUMA	622	2,638	2,429	254	11,322	2,276	1,961	3,358	203	196	8,245	2,177	5,168	1	1,170	42,020
DISTRICT V																
GILA	122	762	512	74	4,068	149	479	1,907	91	32	1,443	479	933	2	286	11,339
PINAL	628	3,635	1,855	469	13,854	1,729	2,218	4,921	235	166	6,857	2,142	3,550	9	1,160	43,428
DISTRICT VI																
COCHISE	255	1,104	1,327	252	5,988	679	856	2,276	132	69	3,500	1,195	2,216	8	730	20,587
GRAHAM	123	429	366	57	2,046	71	360	849	27	29	1,098	532	657	2	126	6,772
GREENLEE	29	32	46	12	302	7	59	104	5	1	122	70	69	0	23	881
SANTA CRUZ	101	601	721	30	2,654	584	445	704	59	49	2,524	626	1,509	0	365	10,972

**TABLE 7B**

**MEDICAL ASSISTANCE PROGRAM**

**RECIPIENTS**

**CHANGE FROM**

**SEPTEMBER 2007**

	SOBRA WOMAN 133% FPL	SOBRA CHILD	ADULT W/O CHILD 100% FPL	FOSTER CARE	1931 36% FPL	FEDERAL EMERGENCY SERVICES	INFANTS	ADULT W/O CHILD 40% FPL	MEDICAL W/SPEND DOWN	SOBRA WOMAN 100% FPL	SOBRA CHILD 100% FPL	TRANSITIONAL MEDICAL T1 - T4	1931 100% FPL	YATI	OTHER	TOTAL RECIPIENTS
ARIZONA	56	(175)	311	101	1,500	(362)	121	2,157	17	(59)	528	853	569	18	318	5,953
DISTRICT I																
MARICOPA	62	(49)	99	67	1,475	(200)	110	1,197	37	(35)	422	359	386	3	92	4,025
DISTRICT II																
PIMA	9	(134)	28	29	150	(132)	73	369	19	7	33	16	153	8	128	756
DISTRICT III																
APACHE	4	(35)	(29)	(3)	(84)	6	20	60	0	1	3	(19)	(8)	0	6	(78)
COCONINO	(4)	10	34	6	(19)	2	5	46	3	5	69	2	33	(2)	(6)	184
NAVAJO	(4)	8	18	(5)	(130)	7	(3)	45	(14)	7	(40)	125	(43)	0	14	(15)
YAVAPAI	10	11	16	1	200	34	(24)	84	(26)	(11)	(34)	(27)	16	2	18	270
DISTRICT IV																
LA PAZ	(1)	(16)	66	(7)	277	(26)	(13)	193	23	2	(45)	297	(22)	0	46	774
MOHAVE	(5)	21	12	3	6	7	(4)	(14)	6	(5)	(2)	23	4	0	6	58
YUMA	4	(45)	16	(9)	118	20	(5)	148	4	8	89	92	56	0	11	507
	0	8	38	(1)	153	(53)	(4)	59	13	(1)	(132)	182	(82)	0	29	209
DISTRICT V																
GILA	(12)	61	52	17	(53)	(34)	(27)	122	(29)	(14)	82	56	8	3	21	253
PINAL	(5)	0	27	(4)	36	(3)	(2)	35	(14)	(5)	(25)	(5)	(7)	2	13	43
	(7)	61	25	21	(89)	(31)	(25)	87	(15)	(9)	107	61	15	1	8	210
DISTRICT VI																
COCHISE	(8)	(31)	27	(4)	(316)	(19)	(20)	41	4	(21)	38	44	46	4	(1)	(216)
GRAHAM	(4)	(5)	12	(3)	(169)	(18)	(5)	35	7	(16)	(49)	15	37	3	10	(150)
GREENLEE	(7)	(5)	(11)	(3)	(43)	8	0	3	(1)	(6)	39	(20)	20	1	(8)	(33)
SANTA CRUZ	(1)	(5)	(1)	2	(16)	0	(4)	(3)	(3)	0	2	0	(1)	0	(2)	(32)
	4	(16)	27	0	(88)	(9)	(11)	6	1	1	46	49	(10)	0	(1)	(1)

**TABLE 7C**  
**MEDICAL ASSISTANCE PROGRAM**  
**RECIPIENTS**

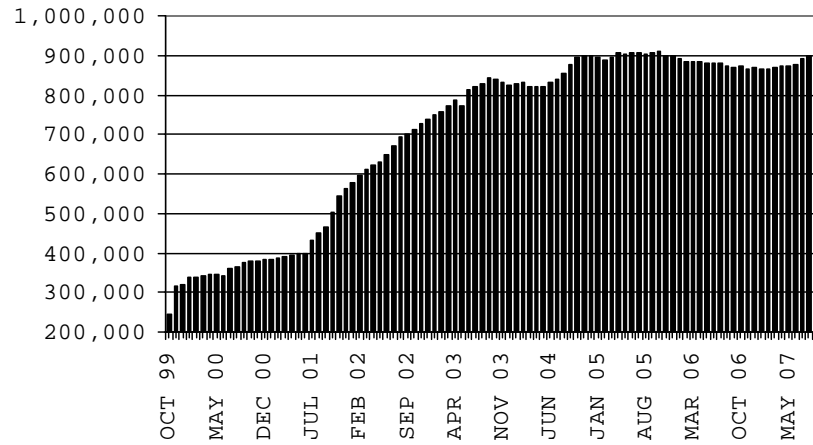
**CHANGE FROM**  
**OCTOBER 2006**

	SOBRA WOMAN 133% FPL	SOBRA CHILD	ADULT W/O CHILD 100% FPL	FOSTER CARE	1931 36% FPL	FEDERAL EMERGENCY SERVICES	INFANTS	ADULT W/O CHILD 40% FPL	MEDICAL W/SPEND DOWN	SOBRA WOMAN 100% FPL	SOBRA CHILD 100% FPL	TRANSITIONAL MEDICAL T1 - T4	3E 1931 100% FPL	YATI	OTHER	TOTAL RECIPIENTS
ARIZONA	560	3,263	1,341	723	7,109	3,232	1,435	8,715	(111)	210	11,606	(2,689)	5,311	63	2,698	43,466
DISTRICT I																
MARICOPA	300	2,507	588	329	6,162	3,521	506	4,096	(44)	185	7,768	(1,363)	3,137	22	1,192	28,906
DISTRICT II																
PIMA	73	189	215	198	679	252	361	1,733	50	(2)	1,299	(311)	773	16	495	6,020
DISTRICT III																
APACHE	5	(72)	(48)	1	(499)	(11)	(2)	206	(3)	21	106	(103)	92	(1)	52	(256)
COCONINO	10	10	(9)	30	(206)	(12)	30	157	(16)	(8)	(35)	(165)	41	7	20	(146)
NAVAJO	45	12	31	(11)	136	27	71	520	(5)	17	158	(194)	71	1	88	967
YAVAPAI	21	68	21	31	283	(11)	26	368	(21)	(2)	256	(440)	199	9	106	914
DISTRICT IV																
LA PAZ	(11)	17	(18)	2	(85)	(12)	17	(3)	2	(1)	39	28	(17)	0	21	(21)
MOHAVE	(8)	(16)	186	4	361	10	40	479	(78)	3	676	162	235	(1)	170	2,223
YUMA	103	163	274	35	(400)	(321)	28	147	1	17	478	(101)	311	(2)	181	914
DISTRICT V																
GILA	(9)	(46)	(20)	(2)	29	(20)	13	133	(6)	(3)	(86)	(64)	(6)	(1)	24	(64)
PINAL	7	498	186	113	1,007	(83)	258	744	(3)	(8)	899	38	348	5	222	4,231
DISTRICT VI																
COCHISE	8	(19)	3	(1)	(303)	(85)	1	59	8	(13)	5	4	72	6	84	(171)
GRAHAM	1	(32)	(37)	(8)	(128)	(1)	27	26	(6)	7	(15)	(113)	(27)	2	3	(301)
GREENLEE	9	(14)	0	2	(27)	(1)	6	(38)	(3)	(3)	(29)	10	(10)	0	0	(98)
SANTA CRUZ	6	(2)	(31)	0	100	(21)	53	88	13	0	87	(77)	92	0	40	348

# CHART 7

## MEDICAL ASSISTANCE PROGRAM COMPARISON OF RECIPIENTS FOR 1999, 2000, 2001, 2002, 2003, 2004, 2005, 2006 & 2007

### TOTAL RECIPIENTS



NEW SERIES WHICH INCLUDES 1931