



**Department of Economic Security**

**State of Arizona**

**Monthly Statistical Bulletin**

**OSPBI M&I**

**Phoenix, AZ**

**November, 2007**

<http://www.azdes.gov/faa/Statistics.asp>

\*\*\*\* STATISTICAL BULLETIN \*\*\*\*  
ARIZONA DEPARTMENT OF ECONOMIC SECURITY  
FAMILY ASSISTANCE ADMINISTRATION  
BOX 6123, PHOENIX, ARIZONA 85005  
PHONE (602) 542-3678

NOVEMBER 2007

THIS ISSUE OF THE STATISTICAL BULLETIN COMPARES NOVEMBER 2007 DATA FOR EACH OF THE INDICATED PROGRAMS WITH THE INFORMATION FOR OCTOBER 2007 AND NOVEMBER 2006. STATEWIDE SUMMARIES OF ACTIVITY WITHIN EACH OF THE SPECIFIC PROGRAMS FOR THIS REPORT PERIOD ARE DISCUSSED BELOW. THE TABLES COMPARE CURRENT AND PRIOR MONTH DATA. DISTRICT AND COUNTY COMPARISONS ARE PROVIDED WITHIN THIS BULLETIN

CASH ASSISTANCE (CA)

COMPARING TO OCTOBER 2007, NOVEMBER 2007 CASES DECREASED BY 298 (0.81%) TO 36,613. RECIPIENTS DECREASED BY 822 (1.03%) TO 78,630. PAYMENTS DECREASED BY \$100,415 (1.02%) TO \$9,786,840. AVERAGE PAYMENT PER CASE DECREASED BY \$0.56 (0.21%) TO \$267.31. PAYMENT PER RECIPIENT INCREASED BY \$0.03 (0.02%) TO \$124.47.

COMPARING TO NOVEMBER 2006, NOVEMBER 2007 CASES DECREASED BY 373 (1.01%). RECIPIENTS DECREASED BY 1,863 (2.31%). TOTAL PAYMENTS DECREASED BY \$201,210 (2.01%). THE AVERAGE PAYMENT PER CASE DECREASED BY \$2.74 (1.01%). THE AVERAGE PAYMENT PER RECIPIENT INCREASED BY \$0.38 (0.31%).

CASH ASSISTANCE UNEMPLOYED PARENT PROGRAM (CA-UP)

COMPARING TO OCTOBER 2007, NOVEMBER 2007 CASES DECREASED BY 7 (1.00%) TO 696. RECIPIENTS DECREASED BY 42 (1.53%) TO 2,697. PAYMENTS INCREASED BY \$2,085 (0.82%) TO \$255,804. AVERAGE PAYMENT PER CASE INCREASED BY \$6.62 (1.83%) TO \$367.53. PAYMENT PER RECIPIENT INCREASED BY \$2.22 (2.39%) TO \$94.85.

COMPARING TO NOVEMBER 2006, NOVEMBER 2007 CASES INCREASED BY 182 (35.41%). RECIPIENTS INCREASED BY 756 (38.95%). TOTAL PAYMENTS INCREASED BY \$68,925 (36.88%). THE AVERAGE PAYMENT PER CASE INCREASED BY \$3.96 (1.09%). THE AVERAGE PAYMENT PER RECIPIENT DECREASED BY \$1.43 (1.48%).

CASH ASSISTANCE WITH GRANT UNDER \$100 (CA-MOE)

COMPARING TO OCTOBER 2007, NOVEMBER 2007 CASES DECREASED BY 8 (1.20%) TO 657. RECIPIENTS INCREASED BY 26 (1.92%) TO 1,383. PAYMENTS DECREASED BY \$1,815 (3.61%) TO \$48,464. AVERAGE PAYMENT PER CASE DECREASED BY \$1.84 (2.43%) TO \$73.77. AVERAGE PAYMENT PER RECIPIENT DECREASED BY \$2.01 (5.43%) TO \$35.04.

COMPARING TO NOVEMBER 2006, NOVEMBER 2007 CASES DECREASED BY 93 (12.40%). RECIPIENTS DECREASED BY 235 (14.52%). TOTAL PAYMENTS DECREASED BY \$5,267 (9.80%). THE AVERAGE PAYMENT PER CASE INCREASED BY \$2.13 (2.97%). THE AVERAGE PAYMENT PER RECIPIENT INCREASED BY \$1.83 (5.51%).

CASH ASSISTANCE UNEMPLOYED PARENT PROGRAM WITH GRANT UNDER \$100 (CA-UP-MOE) NEW PROGRAM STARTING 7/01

COMPARING TO OCTOBER 2007, NOVEMBER 2007 CASES DECREASED BY 4 (28.57%) TO 10. RECIPIENTS DECREASED BY 11 (21.15%) TO 41. PAYMENTS DECREASED BY \$258 (30.82%) TO \$579. AVERAGE PAYMENT PER CASE DECREASED BY \$1.89 (3.16%) TO \$57.90. PAYMENT PER RECIPIENT DECREASED BY \$1.98 (12.30%) TO \$14.12.

COMPARING TO NOVEMBER 2006, NOVEMBER 2007 CASES INCREASED BY 3 (42.86%). RECIPIENTS INCREASED BY 20 (2.39%). TOTAL PAYMENTS INCREASED BY \$131 (29.24%). THE AVERAGE PAYMENT PER CASE DECREASED BY \$6.10 (9.53%). THE AVERAGE PAYMENT PER RECIPIENT DECREASED BY \$7.21 (33.80%).

GENERAL ASSISTANCE (GA)

COMPARING TO OCTOBER 2007, NOVEMBER 2007 CASES DECREASED BY 26 (1.90%) TO 1,346. RECIPIENTS DECREASED BY 27 (1.96%) TO 1,350. PAYMENTS DECREASED BY \$5,251 (2.49%) TO \$205,660. AVERAGE PAYMENT PER CASE DECREASED BY \$0.94 (0.61%) TO \$152.79. AVERAGE PAYMENT PER RECIPIENT DECREASED BY \$0.83 (0.54%) TO \$152.34.

COMPARING TO NOVEMBER 2006, NOVEMBER 2007 CASES INCREASED BY 98 (7.85%). RECIPIENTS INCREASED BY 94 (7.48%). TOTAL PAYMENTS INCREASED BY \$16,634 (8.80%). THE AVERAGE PAYMENT PER CASE INCREASED BY \$1.33 (0.88%). THE AVERAGE PAYMENT PER RECIPIENT INCREASED BY \$1.84 (1.22%).

TUBERCULOSIS CONTROL PROGRAM (TC)

COMPARING TO OCTOBER 2007, NOVEMBER 2007 CASES DECREASED BY 1 (7.69%) TO 12. RECIPIENTS DECREASED BY 1 (7.69%) TO 12. PAYMENTS DECREASED BY \$73 (5.02%) TO \$1,382. AVERAGE PAYMENT PER CASE INCREASED BY \$3.25 (2.90%) TO \$115.17. AVERAGE PAYMENT PER RECIPIENT INCREASED BY \$3.25 (2.90%) TO \$115.17.

COMPARING TO NOVEMBER 2006, NOVEMBER 2007 CASES DECREASED BY 6 (33.33%). RECIPIENTS DECREASED BY 6 (33.33%). TOTAL PAYMENTS DECREASED BY \$846 (37.97%). THE AVERAGE PAYMENT PER CASE DECREASED BY \$8.61 (6.95%). THE AVERAGE PAYMENT PER RECIPIENT DECREASED BY \$8.61 (6.95%).

SUPPLEMENTAL PAYMENTS PROGRAM (SPP)

AS A RESULT OF ARIZONA'S OMNIBUS BUDGET RECONCILIATION BILL, HB 2535, THE SUPPLEMENTAL PAYMENT PROGRAM (SPP) IS BEING SUSPENDED EFFECTIVE JULY, 2003 THROUGH JUNE, 2004.

FOOD STAMP PROGRAM (FS)

COMPARING TO OCTOBER 2007, NOVEMBER 2007 FOOD STAMP HOUSEHOLDS INCREASED BY 1,435 (0.60%) TO 241,268. PERSONS RECEIVING FOOD STAMPS INCREASED BY 3,539 (0.60%) TO 589,259. TOTAL COUPON ISSUANCE DECREASED BY \$196,506 (0.32%) TO \$60,635,449. THE AVERAGE HOUSEHOLD ALLOTMENT DECREASED BY \$2.32 (0.92%) TO \$251.32. THE AVERAGE ALLOTMENT PER PERSON DECREASED BY \$0.96 (0.92%) TO \$102.90.

COMPARING TO NOVEMBER 2006, NOVEMBER 2007 FOOD STAMP HOUSEHOLDS INCREASED BY 23,290 (10.68%). PERSONS RECEIVING FOOD STAMPS INCREASED BY 53,529 (9.99%). TOTAL COUPON ISSUANCE INCREASED BY \$8,120,142 (15.46%). THE AVERAGE ALLOTMENT PER HOUSEHOLD INCREASED BY \$10.40 (4.32%). THE AVERAGE ALLOTMENT PER PERSON INCREASED BY \$4.87 (4.97%).

MEDICAL ASSISTANCE PROGRAM (MA) NEW TABLE INCLUDES PROP. 204 CATEGORIES

COMPARING TO OCTOBER 2007, NOVEMBER 2007 TOTAL RECIPIENTS TOTAL RECIPIENTS DECREASED BY 1,894 (0.21%). SOBRA WOMEN AT 140% FPL DECREASED BY 323 (2.73%). SOBRA CHILDREN INCREASED BY 78 (0.13%). ADULTS W/O CHILD AT 100% DECREASED BY 2 (0.01%). FOSTER CARE INCREASED BY 238 (2.51%). 1931 AT 36% FPL DECREASED BY 583 (0.22%). EMERGENCY SERVICES DECREASED BY 1,123 (1.30%). INFANTS DECREASED BY 546 (1.07%). ADULT W/O CHILD AT 140% INCREASED BY 884 (1.00%). MEDICAL W/SPEND DOWN DECREASED BY 170 (3.11%). SOBRA WOMAN AT 100% DECREASED BY 148 (4.27%). SOBRA CHILD AT 100% DECREASED BY 103 (0.06%). TRANSITIONAL MEDICAL DECREASED BY 341 (0.79%). 1931 AT 100% INCREASED BY 116 (0.15%). YATI DECREASED BY 11 (4.37%). ALL OTHER CATEGORIES INCREASED BY 140 (0.63%).

COMPARING TO NOVEMBER 2006, NOVEMBER 2007 TOTAL RECIPIENTS TOTAL RECIPIENTS INCREASED BY 48,326 (5.58%). SOBRA WOMEN AT 140% FPL INCREASED BY 532 (4.85%). SOBRA CHILDREN INCREASED BY 3,808 (6.55%). ADULTS W/O CHILD AT 100% INCREASED BY 1,819 (5.07%). FOSTER CARE INCREASED BY 837 (9.43%). 1931 AT 36% FPL INCREASED BY 9,266 (3.71%). EMERGENCY SERVICES INCREASED BY 2,906 (3.53%). INFANTS INCREASED BY 996 (2.01%). ADULT W/O CHILD AT 140% INCREASED BY 10,898 (13.94%). MEDICAL W/SPEND DOWN DECREASED BY 68 (1.27%). SOBRA WOMAN AT 100% INCREASED BY 117 (3.65%). SOBRA CHILD AT 100% INCREASED BY 12,098 (8.21%). TRANSITIONAL MEDICAL DECREASED BY 3,725 (8.01%). 1931 AT 100% INCREASED BY 5,887 (8.33%). YATI INCREASED BY 59 (32.42%). ALL OTHER CATEGORIES INCREASED BY 2,896 (14.98%).

# TANF SUMMARY

## TABLES 1, 1A, 1B, & 1C: ARIZONA 1

	NOVEMBER 2007							OCTOBER 2007			NOVEMBER 2006		
	FAMILIES (CASES)	PERSONS (RECIP.)	ADULTS	CHILDREN	TOTAL PAYMENTS	AVERAGE	AVERAGE	FAMILIES (CASES)	PERSONS (RECIP.)	TOTAL PAYMENTS	FAMILIES (CASES)	PERSONS (RECIP.)	TOTAL PAYMENTS
						PAYMENT/ CASE	PAYMENT/ RECIP.						
ARIZONA	37,976	82,751	20,474	62,277	10,091,687	265.74	121.95	(317)	(849)	(100,403)	(281)	(1,322)	(137,421)
DISTRICT I													
MARICOPA	20,803	45,814	10,523	35,291	5,561,671	267.35	121.40	(7)	(67)	(17,456)	131	94	7,255
DISTRICT II													
PIMA	7,266	15,310	4,034	11,276	1,907,458	262.52	124.59	(148)	(369)	(41,301)	(280)	(787)	(100,870)
DISTRICT III													
APACHE	139	301	91	210	35,227	253.43	117.03	(12)	(33)	(2,980)	18	30	3,858
COCONINO	273	593	151	442	66,588	243.91	112.29	0	11	(258)	9	19	500
NAVAJO	1,382	3,366	958	2,408	384,204	278.01	114.14	(28)	(76)	(5,499)	(29)	(141)	(11,610)
YAVAPAI	667	1,280	290	990	166,655	249.86	130.20	(25)	(76)	(4,085)	(14)	(63)	(499)
DISTRICT IV													
LA PAZ	243	530	164	366	62,421	256.88	117.78	(5)	(3)	(1,116)	(31)	(92)	(10,796)
MOHAVE	1,427	3,021	887	2,134	373,919	262.03	123.77	(1)	(24)	(267)	38	156	17,352
YUMA	1,305	2,926	701	2,225	349,125	267.53	119.32	(54)	(114)	(14,757)	(94)	(307)	(31,599)
DISTRICT V													
GILA	768	1,669	569	1,100	206,467	268.84	123.71	(11)	(18)	(2,046)	(58)	(190)	(18,681)
PINAL	2,026	4,594	1,208	3,386	544,708	268.86	118.57	(15)	(36)	(6,822)	138	328	40,051
DISTRICT VI													
COCHISE	985	1,949	517	1,432	253,787	257.65	130.21	2	14	1,435	(44)	(161)	(14,290)
GRAHAM	374	718	223	495	93,750	250.67	130.57	(6)	(34)	(3,827)	(65)	(175)	(19,254)
GREENLEE	52	115	32	83	14,066	270.50	122.31	(3)	(3)	(1,119)	9	19	2,256
SANTA CRUZ	266	565	126	439	71,641	269.33	126.80	(4)	(21)	(305)	(9)	(52)	(1,094)

1/EXCLUDES: PRIOR MONTH NET TOTALS OF 1,800 CASES; 4,298 RECIPIENTS; \$373,918.  
 1/GRANT DIVERSION TOTALS OF: 121 CASES; \$133,184.  
 ZERO PAY TOTALS OF 406 CASES; 1,116 RECIPIENTS.

	CURRENT MO. CASES	CURRENT MO. RECIP.	CURRENT MO. DOLLARS	PRIOR MO. CASES	PRIOR MO. RECIP.	PRIOR MO. DOLLARS
PASQUAYAAQUI	298	870	\$91,026	22	69	6,517
WM APACHE	738	1,915	\$218,468	21	49	3,367
SALT RIVER	92	327	\$28,948	2	9	166
NAVAJO	0	0	\$0	0	0	0
HOPI	140	399	\$34,196	6	18	558
<b>TOTAL</b>	<b>1,268</b>	<b>3,511</b>	<b>\$372,638</b>	<b>51</b>	<b>145</b>	<b>\$10,608</b>

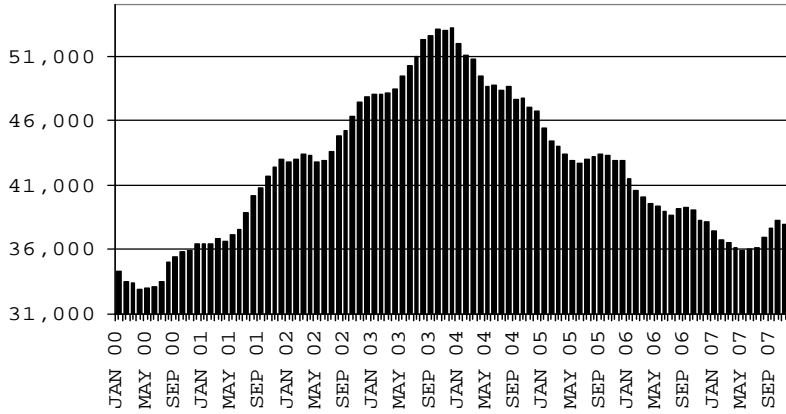
# TANF SUMMARY

## TABLES 1, 1A, 1B, & 1C

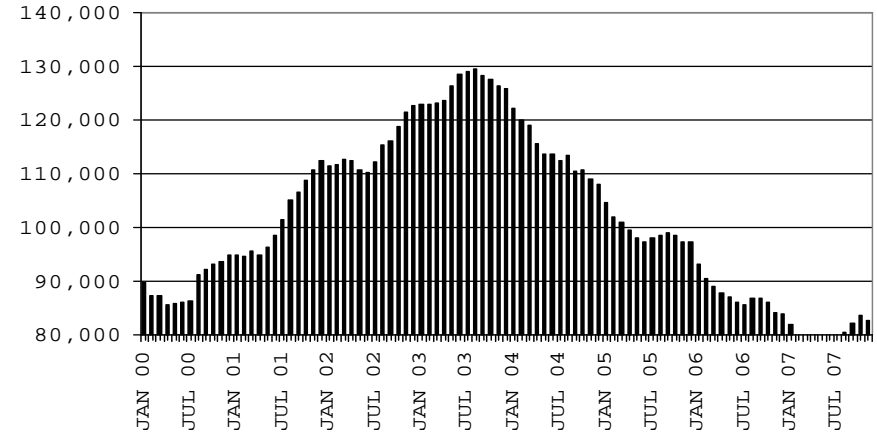
### COMPARISON OF CASES, RECIPIENTS, PAYMENTS & AVERAGE PAYMENTS

FOR 2000, 2001, 2002, 2003, 2004, 2005, 2006, & 2007

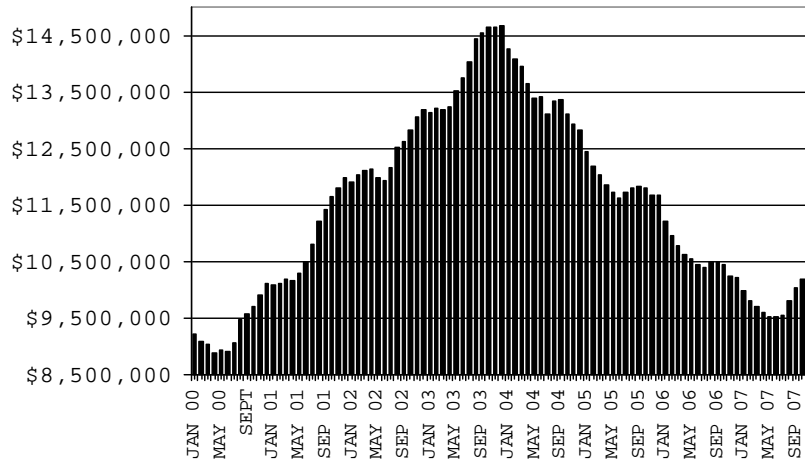
#### CASES



#### RECIPIENTS



#### PAYMENTS



#### AVERAGE PAYMENTS PER RECIPIENT

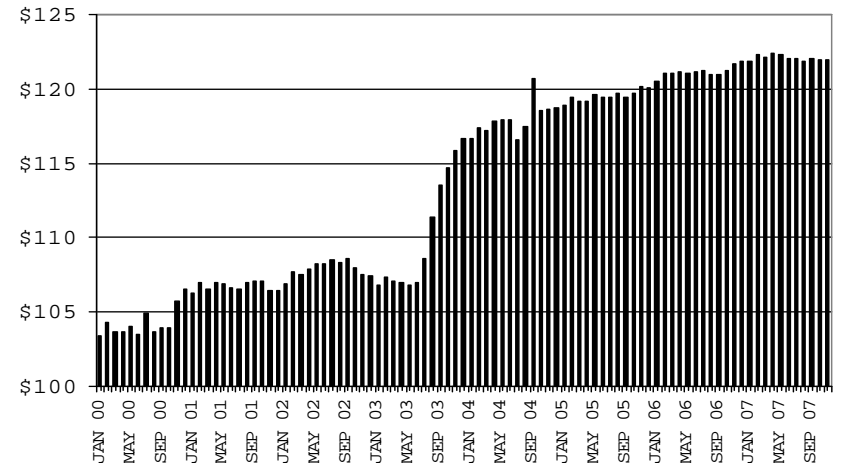


TABLE 1

CASH ASSISTANCE: ARIZONA 1,

	NOVEMBER 2007							CHANGE FROM			NOVEMBER 2006		
	FAMILIES (CASES)	(RECIP.)	ADULTS	CHILDREN	TOTAL PAYMENTS	AVERAGE PAYMENT/ CASE	AVERAGE PAYMENT/ RECIP.	OCTOBER 2007			NOVEMBER 2006		
								FAMILIES (CASES)	PERSONS (RECIP.)	TOTAL PAYMENTS	FAMILIES (CASES)	PERSONS (RECIP.)	TOTAL PAYMENTS
ARIZONA	36,613	78,630	18,934	59,696	9,786,840	267.31	124.47	(298)	(822)	(100,415)	(373)	(1,863)	(201,210)
DISTRICT I													
MARICOPA	20,165	43,984	9,934	34,050	5,436,439	269.60	123.60	2	(41)	(16,424)	81	(163)	(19,528)
DISTRICT II													
PIMA	7,011	14,551	3,737	10,814	1,850,984	264.01	127.21	(146)	(382)	(43,891)	(291)	(871)	(109,711)
DISTRICT III													
APACHE	129	277	83	194	33,446	259.27	120.74	(7)	(19)	(2,432)	15	26	2,880
COCONINO	263	563	139	424	65,044	247.32	115.53	(2)	8	(485)	14	35	1,104
NAVAJO	1,315	3,112	840	2,272	361,347	274.79	116.11	(18)	(24)	(1,543)	(30)	(132)	(10,436)
YAVAPAI	646	1,225	271	954	163,152	252.56	133.19	(20)	(52)	(3,197)	(8)	(61)	(1,753)
DISTRICT IV													
LA PAZ	226	472	140	332	58,332	258.11	123.58	(11)	(27)	(2,586)	(36)	(116)	(11,737)
MOHAVE	1,347	2,777	776	2,001	354,756	263.37	127.75	0	(33)	(261)	15	74	9,205
YUMA	1,239	2,703	615	2,088	330,418	266.68	122.24	(51)	(116)	(14,285)	(103)	(367)	(39,941)
DISTRICT V													
GILA	715	1,492	482	1,010	189,866	265.55	127.26	(13)	(29)	(3,714)	(67)	(232)	(24,210)
PINAL	1,932	4,262	1,073	3,189	519,225	268.75	121.83	(21)	(62)	(8,713)	126	263	32,805
DISTRICT VI													
COCHISE	957	1,873	490	1,383	248,387	259.55	132.61	5	16	2,274	(38)	(160)	(14,375)
GRAHAM	356	679	202	477	90,757	254.94	133.66	(9)	(35)	(3,437)	(60)	(149)	(18,004)
GREENLEE	50	108	29	79	13,556	271.12	125.52	(5)	(10)	(1,629)	9	20	1,809
SANTA CRUZ	262	552	123	429	71,131	271.49	128.86	(2)	(16)	(92)	0	(30)	682

1/EXCLUDES: PRIOR MONTH NET TOTALS OF: 948 CASES; 2,376 RECIPIENTS; \$288,916.  
 GRANT DIVERSION TOTALS OF: 121 CASES; \$133,184  
 ZERO PAY TOTALS OF 401 CASES; 1,094 RECIPIENTS.

	CURRENT MO. CASES	CURRENT MO. RECIP.	CURRENT MO. DOLLARS	PRIOR MO. CASES	PRIOR MO. RECIP.	PRIOR MO. DOLLARS
PASQUAYAUQUI	288	814	86,973	21	64	6,368
WM APACHE	698	1,750	203,269	19	41	2,437
SALT RIVER	92	327	28,948	2	9	166
NAVAJO	0	0	0	0	0	0
HOPÍ	140	399	34,196	6	18	558
TOTAL	1,218	3,290	353,386	48	132	9,529

CASES WITH GRANT UNDER \$100 (SEE TABLE 1B).

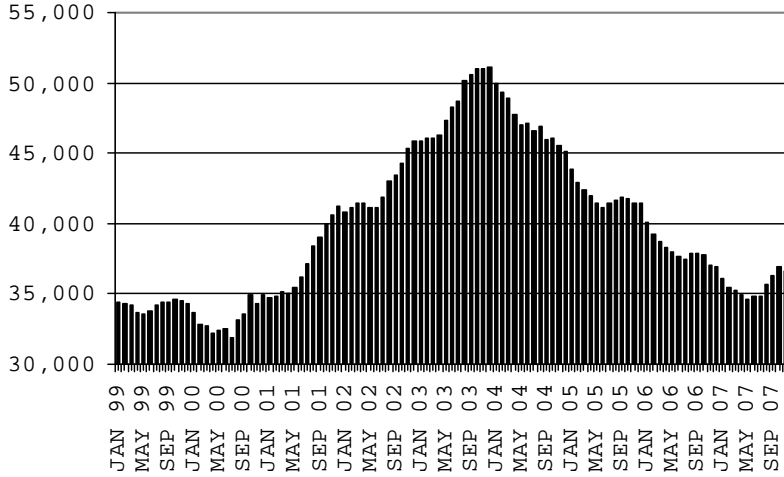
# CHART 1

## CASH ASSISTANCE PROGRAM

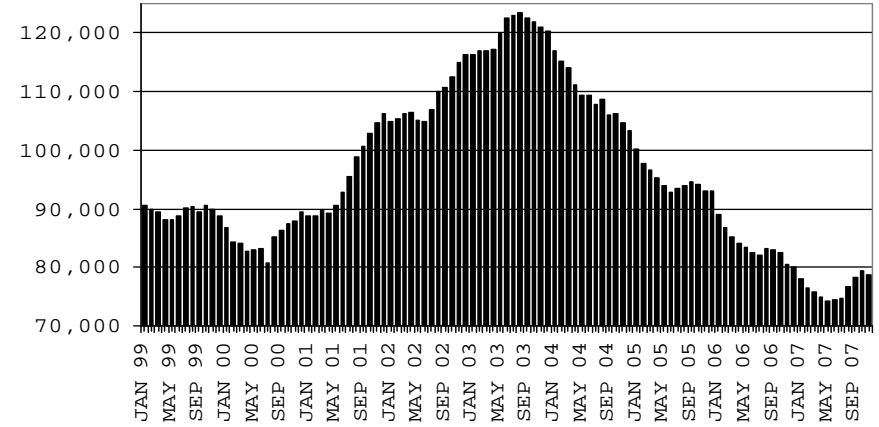
### COMPARISON OF CASES, RECIPIENTS, PAYMENTS & AVERAGE PAYMENTS

FOR 1999, 2000, 2001, 2002, 2003, 2004, 2005, 2006 & 2007

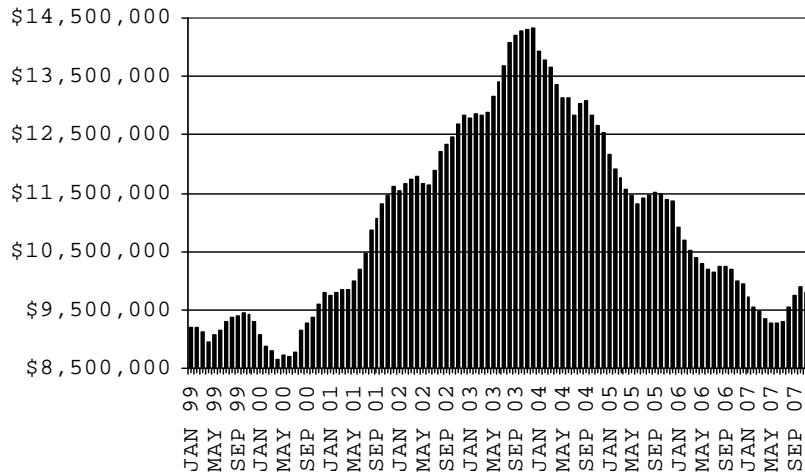
**CASES**



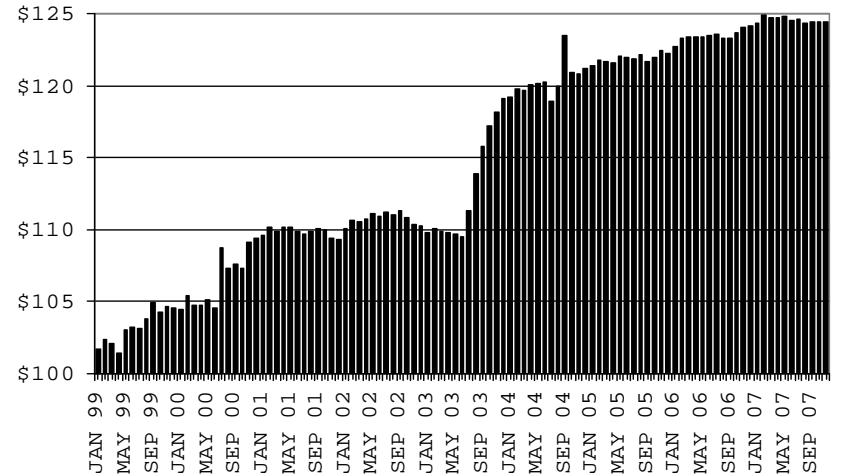
**RECIPIENTS**



**PAYMENTS**



**AVERAGE PAYMENTS PER RECIPIENT**



**TABLE 1A  
CA-UP**

**CASH ASSISTANCE UNEMPLOYED PARENT PROGRAM: ARIZONA 1**

	NOVEMBER 2007							CHANGE FROM			NOVEMBER 2006		
	FAMILIES (CASES)	PERSONS (RECIP.)	ADULTS	CHILDREN	TOTAL PAYMENTS	AVERAGE PAYMENT/ CASE	AVERAGE PAYMENT/ RECIP.	FAMILIES (CASES)	PERSONS (RECIP.)	TOTAL PAYMENTS	FAMILIES (CASES)	PERSONS (RECIP.)	TOTAL PAYMENTS
	ARIZONA	696	2,697	1,172	1,525	255,804	367.53	94.85	(7)	(42)	2,085	182	756
DISTRICT I													
MARICOPA	266	1,034	407	627	99,834	375.32	96.55	(7)	(28)	934	69	302	28,993
DISTRICT II													
PIMA	133	508	225	283	47,550	357.52	93.60	6	27	3,504	35	127	10,324
DISTRICT III													
APACHE	3	11	5	6	1,054	351.33	95.82	(1)	(7)	(343)	1	1	586
COCONINO	3	16	6	10	1,124	374.67	70.25	0	0	78	(1)	(2)	(536)
NAVAJO	60	241	113	128	22,276	371.27	92.43	(11)	(47)	(4,151)	4	2	(1,069)
YAVAPAI	7	28	12	16	2,578	368.29	92.07	(3)	(17)	(990)	4	20	1,912
DISTRICT IV													
LA PAZ	10	42	17	25	3,639	363.90	86.64	3	14	1,255	0	14	641
MOHAVE	46	173	86	87	16,330	355.00	94.39	1	(1)	(346)	20	85	7,763
YUMA	46	174	74	100	16,699	363.02	95.97	0	(4)	(577)	23	94	8,856
DISTRICT V													
GILA	41	151	76	75	15,515	378.41	102.75	4	17	1,993	13	57	6,018
PINAL	59	241	112	129	22,247	377.07	92.31	5	20	2,181	16	65	6,607
DISTRICT VI													
COCHISE	12	45	20	25	3,878	323.17	86.18	(3)	(10)	(873)	2	11	509
GRAHAM	8	25	16	9	2,453	306.63	98.12	(1)	(6)	(655)	(2)	(12)	(801)
GREENLEE	1	4	2	2	418	418.00	104.50	1	4	418	1	4	418
SANTA CRUZ	1	4	1	3	209	209.00	52.25	(1)	(4)	(343)	(3)	(12)	(1,296)

1/EXCLUDES: PRIOR MONTH NET TOTALS OF: 79 CASES; 310 RECIPIENTS; \$30,427.  
GRANT DIVERSION TOTALS OF: 0 CASES; \$0.  
ZERO PAY TOTALS OF 5 CASES; 22 RECIPIENTS.

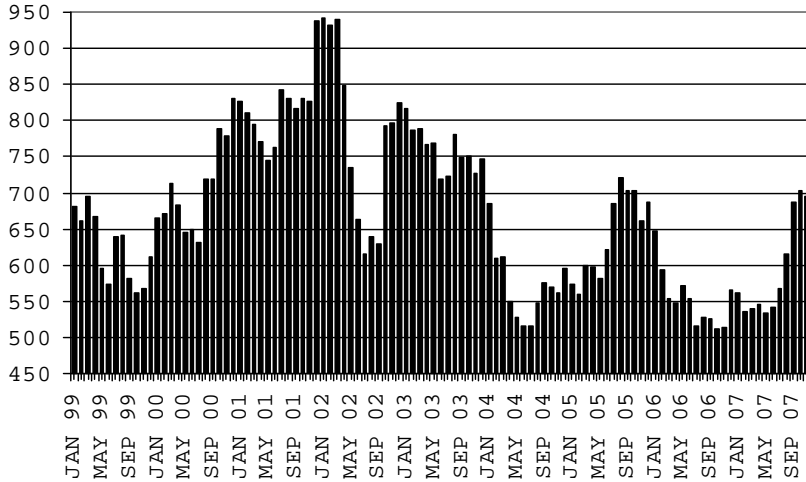
	CURRENT MO. CASES	CURRENT MO. RECIP.	CURRENT MO. DOLLARS	PRIOR MO. CASES	PRIOR MO. RECIP.	PRIOR MO. DOLLARS
PASQUAYUQUI	10	56	4,053	1	5	149
WM APACHE	40	165	15,199	2	8	930
SALT RIVER	0	0	0	0	0	0
NAVAJO	0	0	0	0	0	0
HOPI	0	0	0	0	0	0
<b>TOTAL</b>	<b>50</b>	<b>221</b>	<b>19,252</b>	<b>3</b>	<b>13</b>	<b>1,079</b>

CASES WITH GRANT UNDER \$100 (SEE TABLE 1C).

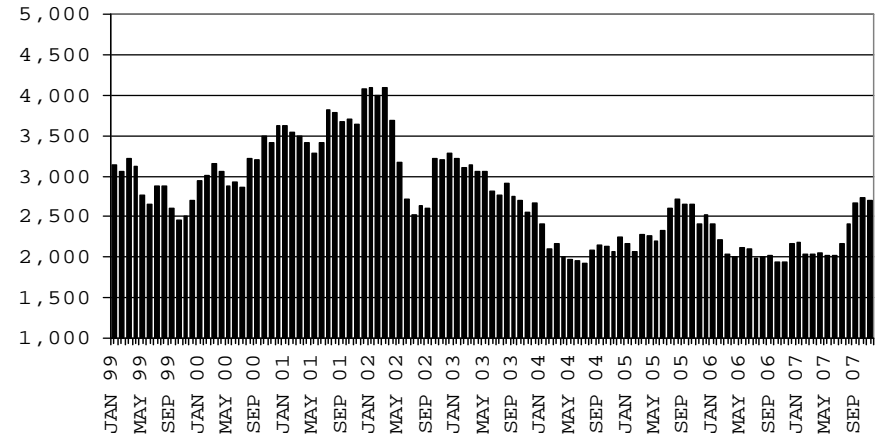
# CHART 1A

## CASH ASSISTANCE UNEMPLOYED PARENT PROGRAM COMPARISON OF CASES, RECIPIENTS, PAYMENTS & AVERAGE PAYMENTS FOR 1999, 2000, 2001, 2002, 2003, 2004, 2005, 2006 & 2007

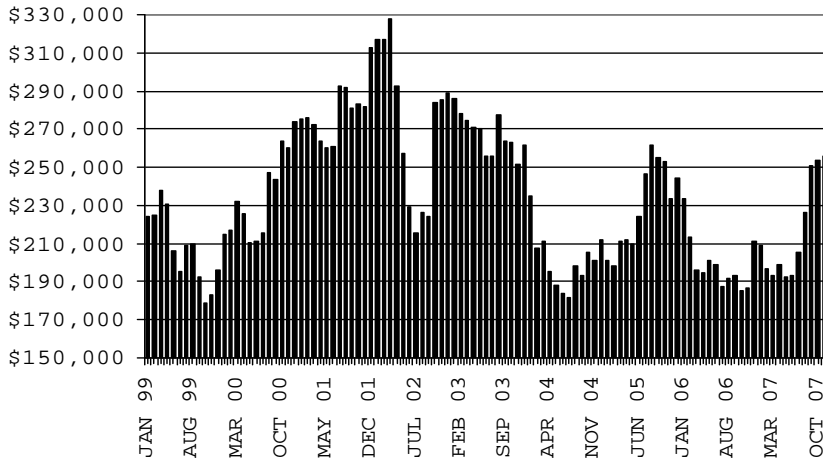
### CASES



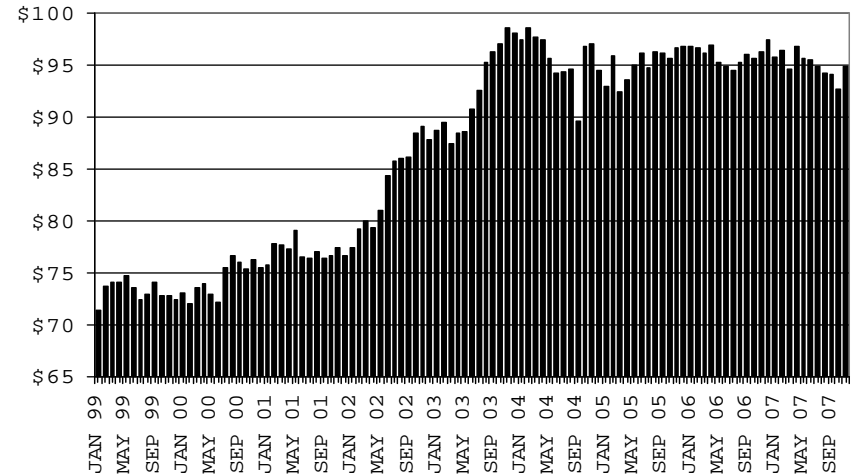
### RECIPIENTS



### PAYMENTS



### AVERAGE PAYMENTS PER RECIPIENT





**TABLE 1B 1/**

**CASH ASSISTANCE: ARIZONA  
CASES WITH GRANT UNDER \$100**

	NOVEMBER 2007							CHANGE FROM			NOVEMBER 2006		
	FAMILIES (CASES)	PERSONS (RECIP.)	ADULTS	CHILDREN	TOTAL PAYMENTS	AVERAGE	AVERAGE	FAMILIES (CASES)	PERSONS (RECIP.)	TOTAL PAYMENTS	FAMILIES (CASES)	PERSONS (RECIP.)	TOTAL PAYMENTS
						PAYMENT/ CASE	PAYMENT/ RECIP.						
ARIZONA	657	1,383	352	1,031	48,464	73.77	35.04	(8)	26	(1,815)	(93)	(235)	(5,267)
DISTRICT I													
MARICOPA	368	780	178	602	25,151	68.35	32.24	(1)	4	(1,908)	(20)	(51)	(2,282)
DISTRICT II													
PIMA	119	241	66	175	8,794	73.90	36.49	(7)	(5)	(800)	(27)	(53)	(1,613)
DISTRICT III													
APACHE	7	13	3	10	727	103.86	55.92	(4)	(7)	(205)	3	6	426
COCONINO	7	14	6	8	420	60.00	30.00	2	3	149	(4)	(14)	(68)
NAVAJO	7	13	5	8	581	83.00	44.69	2	(1)	290	(3)	(11)	(105)
YAVAPAI	14	27	7	20	925	66.07	34.26	(2)	(7)	102	(10)	(22)	(658)
DISTRICT IV													
LA PAZ	6	11	5	6	408	68.00	37.09	2	5	173	4	5	258
MOHAVE	33	66	23	43	2,752	83.39	41.70	(1)	9	330	3	(6)	351
YUMA	20	49	12	37	2,008	100.40	40.98	(2)	8	148	(14)	(34)	(514)
DISTRICT V													
GILA	12	26	11	15	1,086	90.50	41.77	(2)	(6)	(325)	(3)	(12)	(393)
PINAL	34	86	21	65	3,157	92.85	36.71	1	6	(290)	(5)	(5)	560
DISTRICT VI													
COCHISE	16	31	7	24	1,522	95.13	49.10	0	8	34	(8)	(12)	(424)
GRAHAM	10	14	5	9	540	54.00	38.57	4	7	265	(2)	(11)	(354)
GREENLEE	1	3	1	2	92	92.00	30.67	1	3	92	(1)	(5)	29
SANTA CRUZ	3	9	2	7	301	100.33	33.44	(1)	(1)	130	(6)	(10)	(480)

EXCLUDES: PRIOR MONTH NET TOTALS OF 743 CASES; 1,504 RECIPIENTS; \$53,165.

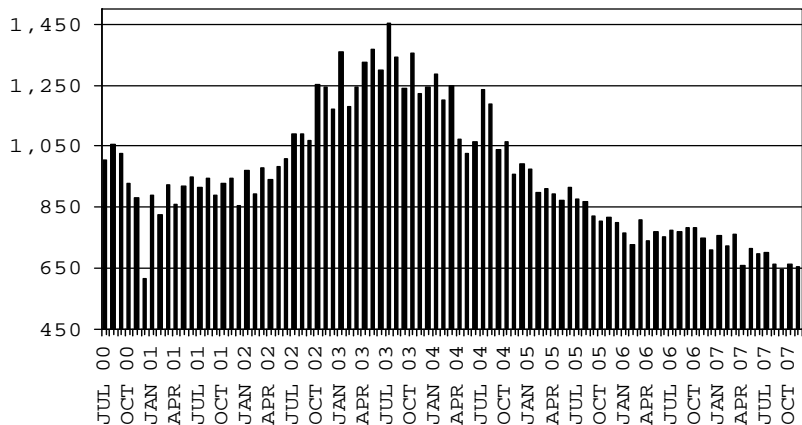
# CHART 1B

## CASH ASSISTANCE PROGRAM CASES WITH GRANT UNDER \$100

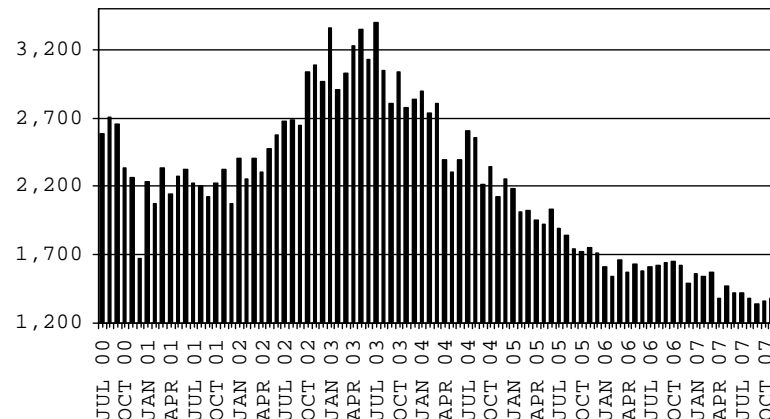
### COMPARISON OF CASES, RECIPIENTS, PAYMENTS & AVERAGE PAYMENTS

FOR 2000, 2001, 2002, 2003, 2004, 2005, 2006 & 2007

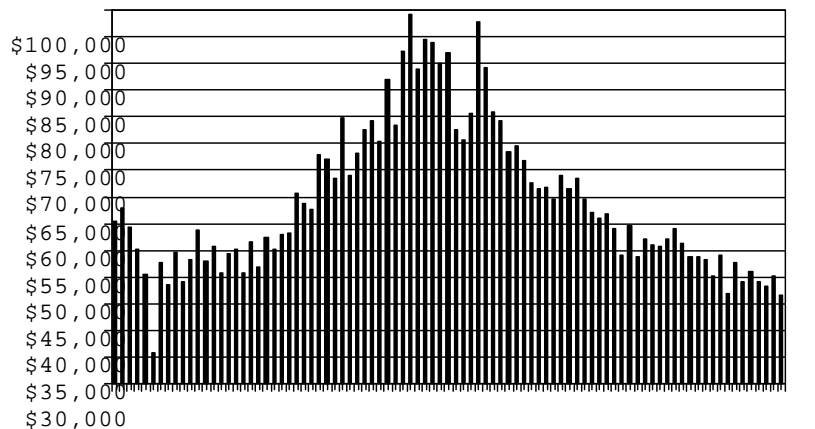
**CASES**



**RECIPIENTS**



**PAYMENTS**



**AVERAGE PAYMENTS PER RECIPIENT**

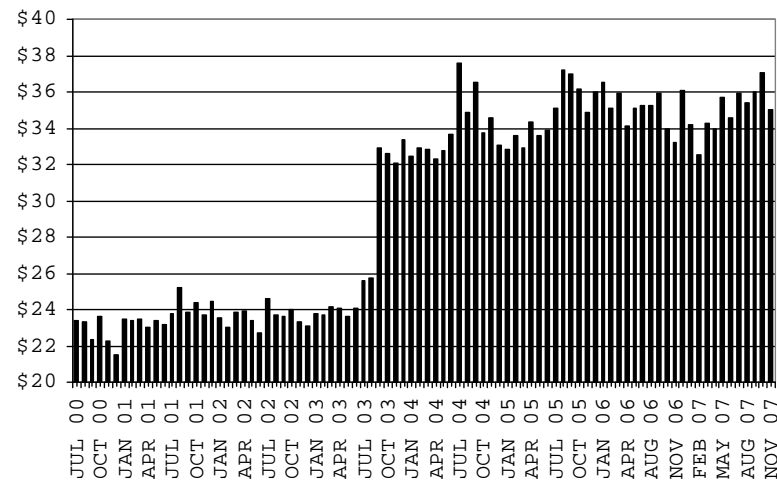


TABLE 1C 1/

CASH ASSISTANCE UNEMPLOYED PARENT PROGRAM: ARIZONA  
 CASES WITH GRANT UNDER \$100

	NOVEMBER 2007								CHANGE FROM			NOVEMBER 2006		
									OCTOBER 2007					
	FAMILIES (CASES)	PERSONS (RECIP.)	ADULTS	CHILDREN	TOTAL PAYMENTS	AVERAGE PAYMENT/ CASE	AVERAGE PAYMENT/ RECIP.		FAMILIES (CASES)	PERSONS (RECIP.)	TOTAL PAYMENTS	FAMILIES (CASES)	PERSONS (RECIP.)	TOTAL PAYMENTS
ARIZONA	10	41	16	25	579	57.90	14.12	(4)	(11)	(258)	3	20	131	
DISTRICT I														
MARICOPA	4	16	4	12	247	61.75	15.44	(1)	(2)	(58)	1	6	72	
DISTRICT II														
PIMA	3	10	6	4	130	43.33	13.00	(1)	(9)	(114)	3	10	130	
DISTRICT III														
APACHE	0	0	0	0	0	0.00	0.00	0	0	0	(1)	(3)	(34)	
COCONINO	0	0	0	0	0	0.00	0.00	0	0	0	0	0	0	
NAVAJO	0	0	0	0	0	0.00	0.00	(1)	(4)	(95)	0	0	0	
YAVAPAI	0	0	0	0	0	0.00	0.00	0	0	0	0	0	0	
DISTRICT IV														
LA PAZ	1	5	2	3	42	42.00	8.40	1	5	42	1	5	42	
MOHAVE	1	5	2	3	81	81.00	16.20	(1)	1	10	0	3	33	
YUMA	0	0	0	0	0	0.00	0.00	(1)	(2)	(43)	0	0	0	
DISTRICT V														
GILA	0	0	0	0	0	0.00	0.00	0	0	0	(1)	(3)	(96)	
PINAL	1	5	2	3	79	79.00	15.80	0	0	0	1	5	79	
DISTRICT VI														
COCHISE	0	0	0	0	0	0.00	0.00	0	0	0	0	0	0	
GRAHAM	0	0	0	0	0	0.00	0.00	0	0	0	(1)	(3)	(95)	
GREENLEE	0	0	0	0	0	0.00	0.00	0	0	0	0	0	0	
SANTA CRUZ	0	0	0	0	0	0.00	0.00	0	0	0	0	0	0	

EXCLUDES: PRIOR MONTH NET TOTALS OF 30 CASES; 108 RECIPIENTS; \$1,410.

# CHART 1C

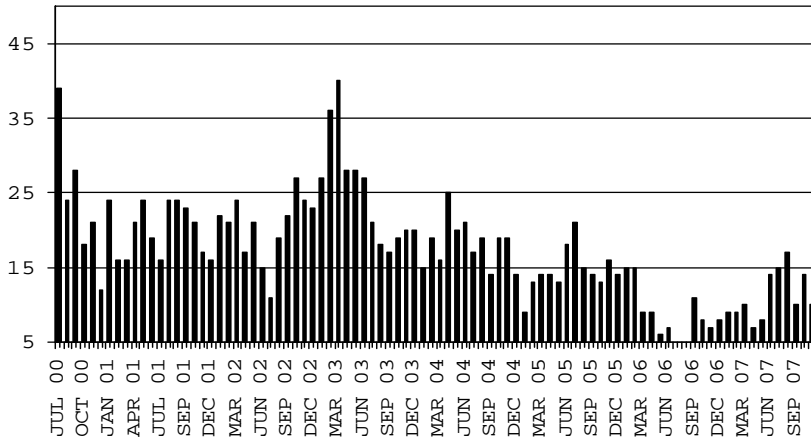
## CASH ASSISTANCE UNEMPLOYED PARENT PROGRAM

### CASES WITH GRANT UNDER \$100

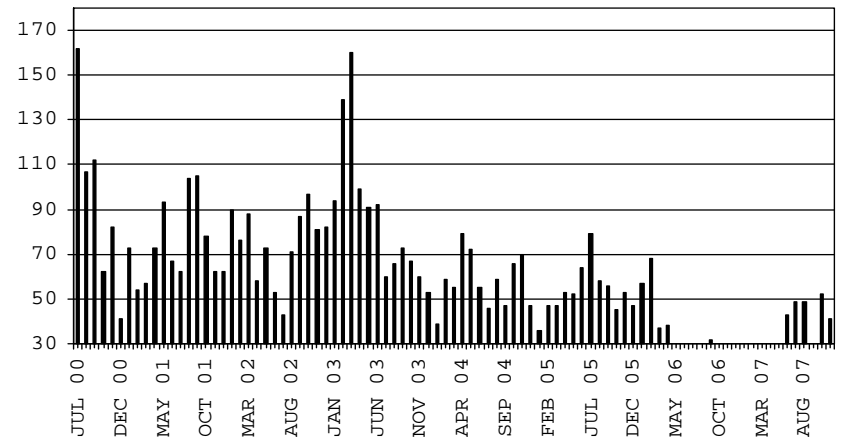
#### COMPARISON OF CASES, RECIPIENTS, PAYMENTS & AVERAGE PAYMENTS

FOR 2000, 2001, 2002, 2003, 2004, 2005, 2006 & 2007

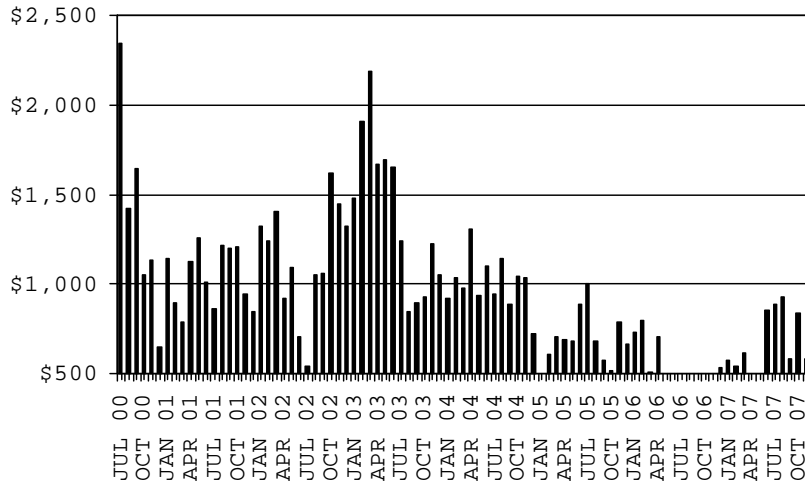
**CASES**



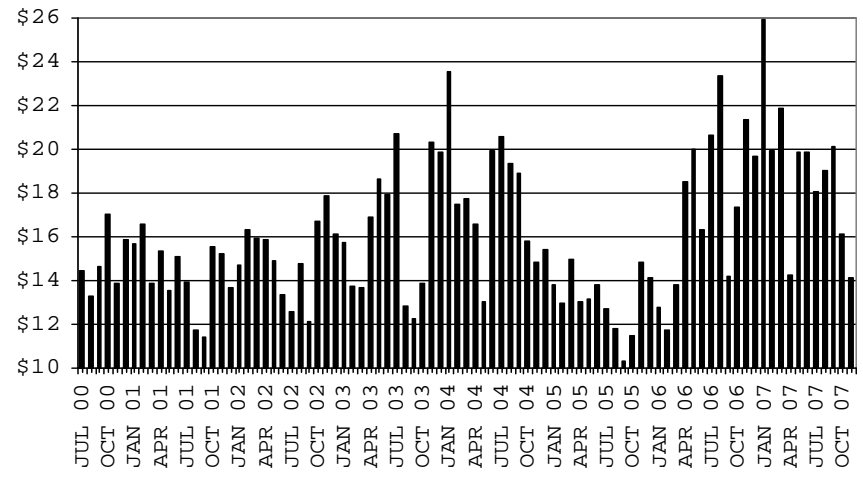
**RECIPIENTS**



**PAYMENTS**



**AVERAGE PAYMENTS PER RECIPIENT**



**TABLE 2**  
**GENERAL ASSISTANCE: ARIZONA 1,**

	CHANGE FROM										
	NOVEMBER 2007					OCTOBER 2007			NOVEMBER 2006		
	NUMBER OF CASES	PERSONS (RECIP.)	TOTAL PAYMENTS	AVERAGE PAYMENT/ CASE	AVERAGE PAYMENT/ RECIP.	NUMBER OF CASES	PERSONS (RECIP.)	TOTAL PAYMENTS	NUMBER OF CASES	PERSONS (RECIP.)	TOTAL PAYMENTS
ARIZONA	1,346	1,350	205,660	152.79	152.34	(26)	(27)	(5,251)	98	94	16,634
DISTRICT I											
MARICOPA	547	547	84,094	153.74	153.74	(34)	(34)	(5,149)	39	38	7,689
DISTRICT II											
PIMA	365	365	54,631	149.67	149.67	9	9	1,125	46	44	6,514
DISTRICT III											
APACHE	10	11	1,538	153.80	139.82	2	2	224	(8)	(9)	(1,048)
COCONINO	20	21	2,870	143.50	136.67	(3)	(3)	(519)	0	0	33
NAVAJO	41	41	6,308	153.85	153.85	1	1	199	18	17	2,709
YAVAPAI	54	55	8,686	160.85	157.93	0	0	352	(6)	(5)	(744)
DISTRICT IV											
LA PAZ	113	114	16,655	147.39	146.10	4	3	171	(14)	(13)	(2,790)
LA PAZ	11	11	1,448	131.64	131.64	(3)	(4)	(579)	5	5	475
MOHAVE	72	73	10,992	152.67	150.58	6	6	577	8	9	900
YUMA	30	30	4,215	140.50	140.50	1	1	173	(27)	(27)	(4,165)
DISTRICT V											
GILA	135	135	21,460	158.96	158.96	2	2	(50)	41	40	7,397
PINAL	30	30	4,605	153.50	153.50	(1)	(1)	(173)	10	10	2,016
PINAL	105	105	16,855	160.52	160.52	3	3	123	31	30	5,381
DISTRICT VI											
COCHISE	61	61	9,418	154.39	154.39	(7)	(7)	(1,604)	(18)	(18)	(3,126)
COCHISE	49	49	7,503	153.12	153.12	(3)	(3)	(977)	(5)	(5)	(1,124)
GRAHAM	5	5	865	173.00	173.00	(4)	(4)	(627)	(11)	(11)	(1,773)
GREENLEE	4	4	627	156.75	156.75	1	1	173	2	2	281
SANTA CRUZ	3	3	423	141.00	141.00	(1)	(1)	(173)	(4)	(4)	(510)

1/EXCLUDES: PRIOR MONTH NET TOTALS OF : 216 CASES; 216 RECIPIENTS; \$52,370.  
REFUGEE RESETTLEMENT PROGRAM: 138 CASES; 202 RECIPIENTS; \$38,589.

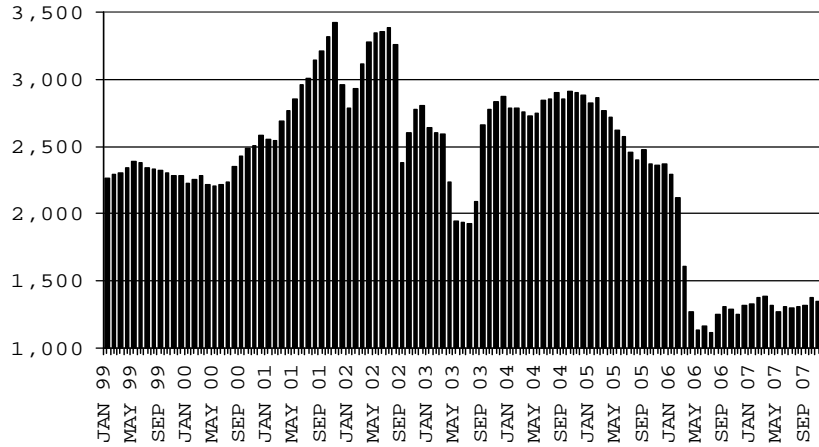
# CHART 2

## GENERAL ASSISTANCE PROGRAM

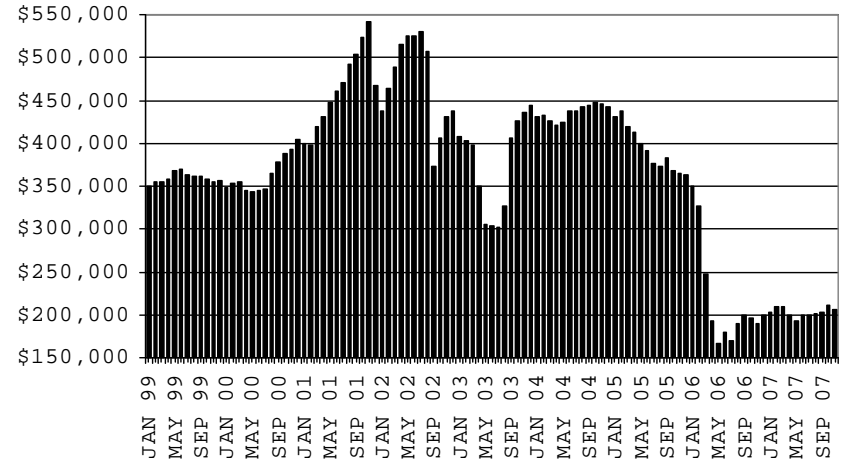
### COMPARISON OF CASES, PAYMENTS & AVERAGE PAYMENTS

FOR 1999, 2000, 2001, 2002, 2003, 2004, 2005, 2006 & 2007

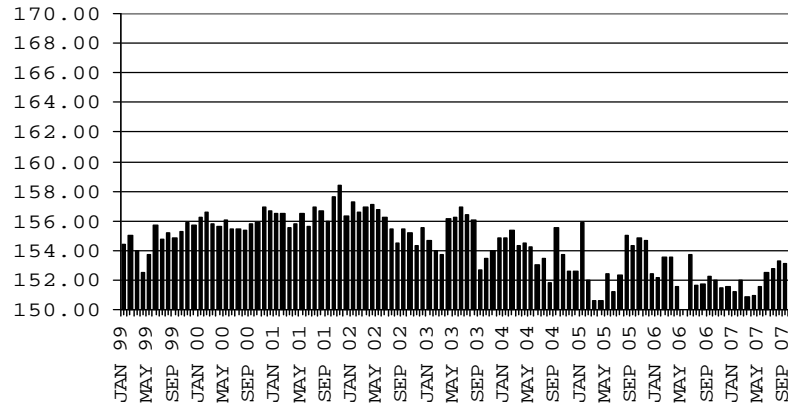
**CASES**



**PAYMENTS**



**AVERAGE PAYMENT PER CASE**



**TABLE 4**

**TUBERCULOSIS CONTROL: ARIZONA 1/**

	CHANGE FROM										
	NOVEMBER 2007					OCTOBER 2007			NOVEMBER 2006		
	NUMBER OF CASES	PERSONS (RECIP.)	TOTAL PAYMENTS	AVERAGE PAYMENT/ CASE	AVERAGE PAYMENT/ RECIP.	NUMBER OF CASES	PERSONS (RECIP.)	TOTAL PAYMENTS	NUMBER OF CASES	PERSONS (RECIP.)	TOTAL PAYMENTS
ARIZONA	12	12	1,382	115.17	115.17	(1)	(1)	(73)	(6)	(6)	(846)
DISTRICT I											
MARICOPA	11	11	1,274	115.82	115.82	(1)	(1)	(73)	(6)	(6)	(746)
DISTRICT II											
PIMA	0	0	0	0.00	0.00	0	0	0	(1)	(1)	(208)
DISTRICT III	1	1	108	108.00	108.00	0	0	0	1	1	108
APACHE	0	0	0	0.00	0.00	0	0	0	0	0	0
COCONINO	0	0	0	0.00	0.00	0	0	0	0	0	0
NAVAJO	0	0	0	0.00	0.00	0	0	0	0	0	0
YAVAPAI	1	1	108	108.00	108.00	0	0	0	1	1	108
DISTRICT IV	0	0	0	0.00	0.00	0	0	0	0	0	0
LA PAZ	0	0	0	0.00	0.00	0	0	0	0	0	0
MOHAVE	0	0	0	0.00	0.00	0	0	0	0	0	0
YUMA	0	0	0	0.00	0.00	0	0	0	0	0	0
DISTRICT V	0	0	0	0.00	0.00	0	0	0	0	0	0
GILA	0	0	0	0.00	0.00	0	0	0	0	0	0
PINAL	0	0	0	0.00	0.00	0	0	0	0	0	0
DISTRICT VI	0	0	0	0.00	0.00	0	0	0	0	0	0
COCHISE	0	0	0	0.00	0.00	0	0	0	0	0	0
GRAHAM	0	0	0	0.00	0.00	0	0	0	0	0	0
GREENLEE	0	0	0	0.00	0.00	0	0	0	0	0	0
SANTA CRUZ	0	0	0	0.00	0.00	0	0	0	0	0	0

1/EXCLUDES: PRIOR MONTH NET TOTALS OF : 0 CASES; 0 RECIPIENTS; \$0.

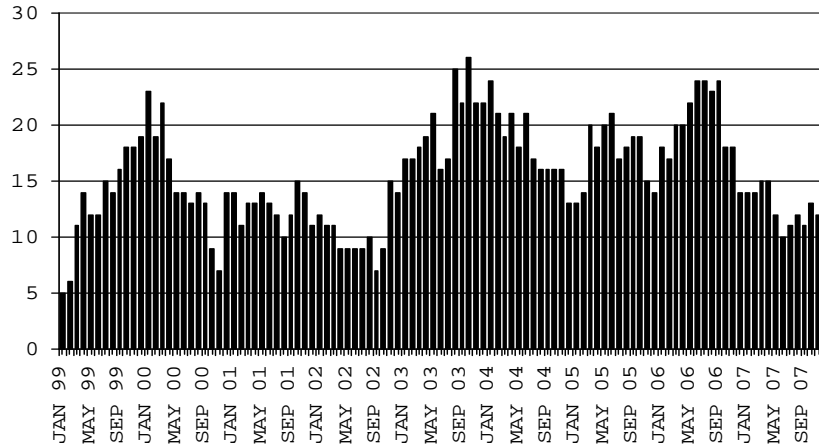
# CHART 4

## TUBERCULOSIS CONTROL PROGRAM

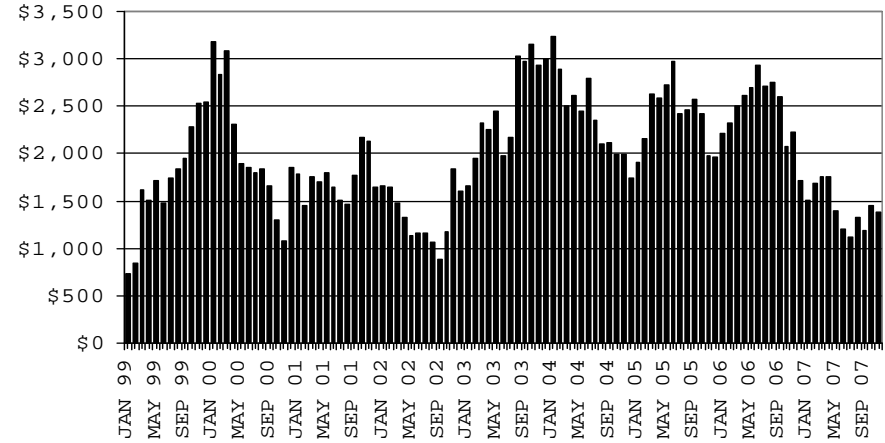
### COMPARISON OF CASES, PAYMENTS & AVERAGE PAYMENTS

FOR 1999, 2000, 2001, 2002, 2003, 2004, 2005, 2006 & 2007

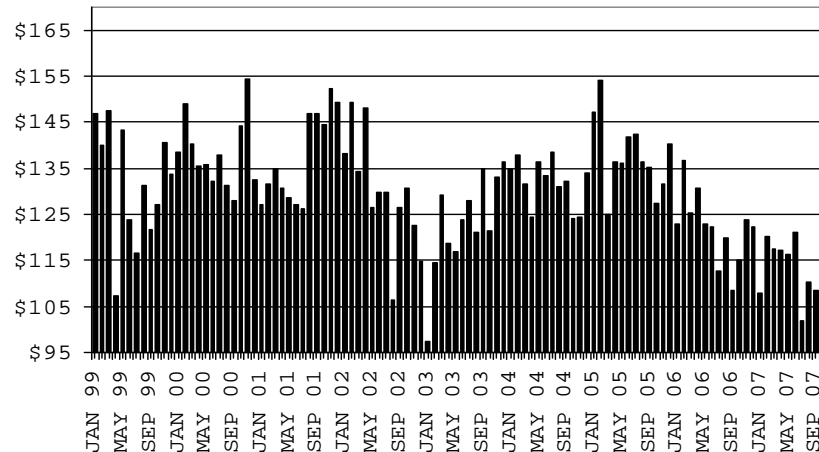
**CASES**



**PAYMENTS**



**AVERAGE PAYMENT PER CASE**





**TABLE 5**

**SUPPLEMENTAL PAYMENTS PROGRAM: ARIZONA 1,  
 BASED ON HB 2535 SPP IS SUSPENDED FROM JULY, 2003 THROUGH JUNE, 2004**  
 CHANGE FROM

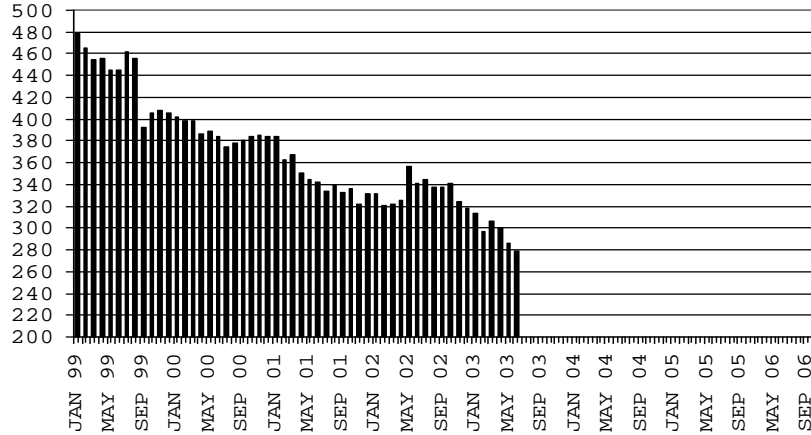
	NOVEMBER 2007			OCTOBER 2007		NOVEMBER 2006	
	NUMBER OF PAYMENTS	TOTAL PAYMENTS	AVERAGE PAYMENT	NUMBER OF PAYMENTS	TOTAL PAYMENTS	NUMBER OF PAYMENTS	TOTAL PAYMENTS
ARIZONA	0	0	0	0	0	0	0
DISTRICT I							
MARICOPA	0	0	0	0	0	0	0
DISTRICT II							
PIMA	0	0	0	0	0	0	0
DISTRICT III							
APACHE	0	0	0	0	0	0	0
COCONINO	0	0	0	0	0	0	0
NAVAJO	0	0	0	0	0	0	0
YAVAPAI	0	0	0	0	0	0	0
DISTRICT IV							
LA PAZ	0	0	0	0	0	0	0
MOHAVE	0	0	0	0	0	0	0
YUMA	0	0	0	0	0	0	0
DISTRICT V							
GILA	0	0	0	0	0	0	0
PINAL	0	0	0	0	0	0	0
DISTRICT VI							
COCHISE	0	0	0	0	0	0	0
GRAHAM	0	0	0	0	0	0	0
GREENLEE	0	0	0	0	0	0	0
SANTA CRUZ	0	0	0	0	0	0	0

1/EXCLUDES: PRIOR MONTH NET TOTALS OF : 0 CASES (PERSONS); \$0.  
 1/TABLE 5 IS BASED ON THE LOCATION OF THE OFFICE THAT PROCEEDS THE APPLICATION.

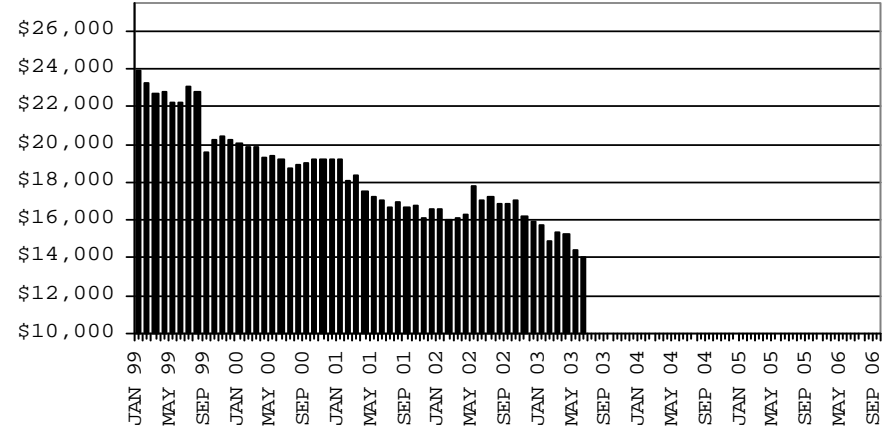
# CHART 5

## SUPPLEMENTAL PAYMENTS PROGRAM COMPARISON OF CASES, PAYMENTS & AVERAGE PAYMENTS FOR 1999, 2000, 2001, 2002, 2003, 2004, 2005, 2006 & 2007

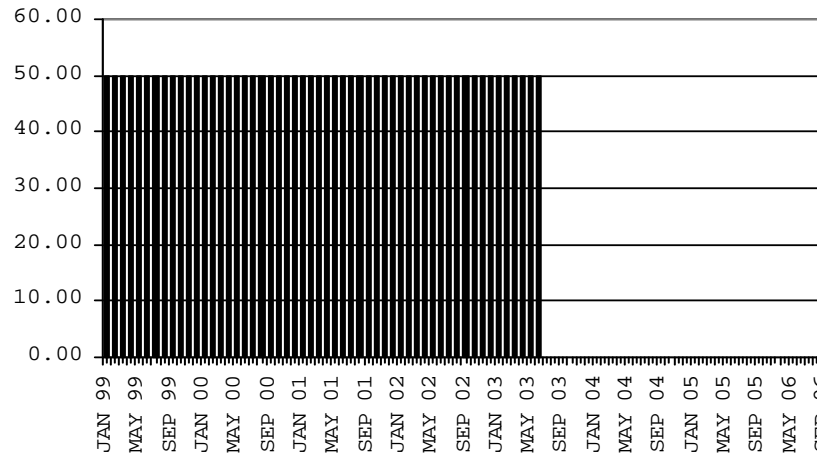
### CASES



### PAYMENTS



### AVERAGE PAYMENT PER CASE



**TABLE 6**

**FOOD STAMP PROGRAM: ARIZONA 1/**

	CHANGE FROM											
	NOVEMBER 2007					OCTOBER 2007			NOVEMBER 2006			
	HOUSEHOLDS	PERSONS	TOTAL COUPON ISSUANCE	AVERAGE ALLOT./ HOUSEHOLD	AVERAGE ALLOT./ PERSON	HOUSEHOLDS	PERSONS	TOTAL COUPON ISSUANCE	HOUSEHOLDS	PERSONS	TOTAL COUPON ISSUANCE	
ARIZONA	241,268	589,259	60,635,449	251.32	102.90	1,435	3,539	(196,506)	23,290	53,529	8,120,142	
DISTRICT I												
MARICOPA	120,253	293,864	30,866,788	256.68	105.04	1,043	3,006	38,847	13,129	31,877	4,634,827	
DISTRICT II												
PIMA	42,942	98,505	10,160,946	236.62	103.15	125	294	(80,621)	3,571	7,202	1,170,125	
DISTRICT III												
APACHE	6,294	19,538	1,901,817	302.16	97.34	29	18	(10,249)	104	152	115,138	
COCONINO	5,414	15,836	1,526,226	281.90	96.38	25	(58)	(9,626)	477	771	165,830	
NAVAJO	9,373	26,383	2,590,740	276.40	98.20	25	10	(18,603)	694	1,907	312,443	
YAVAPAI	6,529	13,263	1,328,094	203.41	100.14	11	(35)	(28,381)	551	1,126	159,020	
DISTRICT IV												
LA PAZ	1,294	2,860	296,445	229.09	103.65	25	24	2,356	50	97	12,199	
MOHAVE	10,930	23,212	2,434,010	222.69	104.86	143	291	12,475	1,419	2,982	413,652	
YUMA	10,403	28,276	2,720,888	261.55	96.23	(156)	(475)	(75,235)	619	1,367	241,497	
DISTRICT V												
GILA	3,517	8,214	856,695	243.59	104.30	8	(8)	(7,821)	198	273	58,076	
PINAL	12,538	31,598	3,273,656	261.10	103.60	230	622	41,281	2,116	5,481	695,118	
DISTRICT VI												
COCHISE	6,842	15,180	1,493,244	218.25	98.37	(28)	(65)	(33,633)	295	143	77,315	
GRAHAM	2,070	4,934	478,529	231.17	96.99	(30)	(49)	(13,719)	(24)	(132)	5,788	
GREENLEE	243	526	53,375	219.65	101.47	(13)	(23)	(2,832)	(38)	(86)	(3,514)	
SANTA CRUZ	2,626	7,070	653,996	249.05	92.50	(2)	(13)	(10,745)	129	369	62,628	

1/EXCLUDES: PRIOR MONTH NET TOTALS OF : 8,176 CASES; 21,256 RECIPIENTS; \$1,012,170.  
 AGED CANCELATIONS: 0 CASES; 0 RECIPIENTS; 0.  
 FS COUPON CONVERSIONS: 0 CASES; 0 RECIPIENTS; \$0.  
 FS REINSTATED: 0 CASES; \$0.  
 FS ZERO PAY: 4,024 CASES; 15,589 RECIPIENTS.

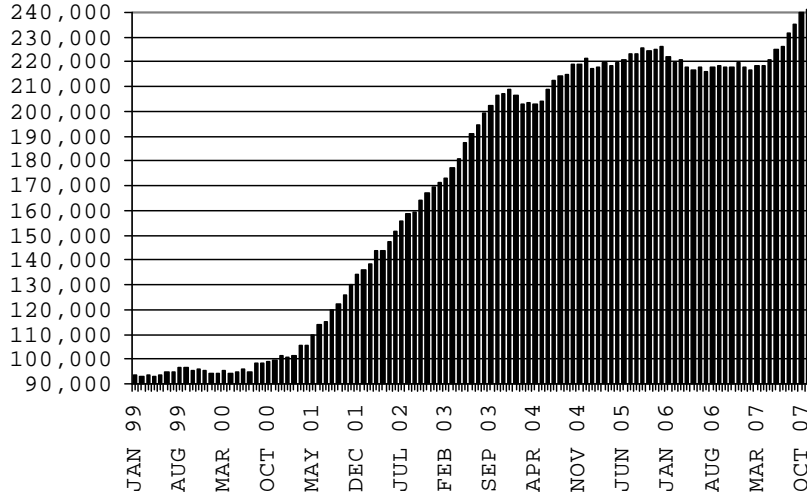
# CHART 6

## FOOD STAMPS PROGRAM

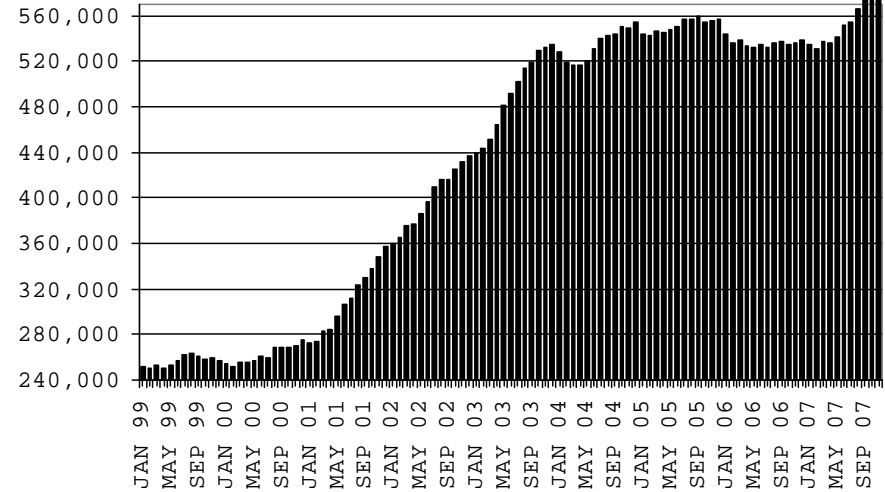
### COMPARISON OF HOUSEHOLDS, RECIPIENTS, PAYMENTS & AVERAGE PAYMENTS

FOR 1999, 2000, 2001, 2002, 2003, 2004, 2005, 2006 & 2007

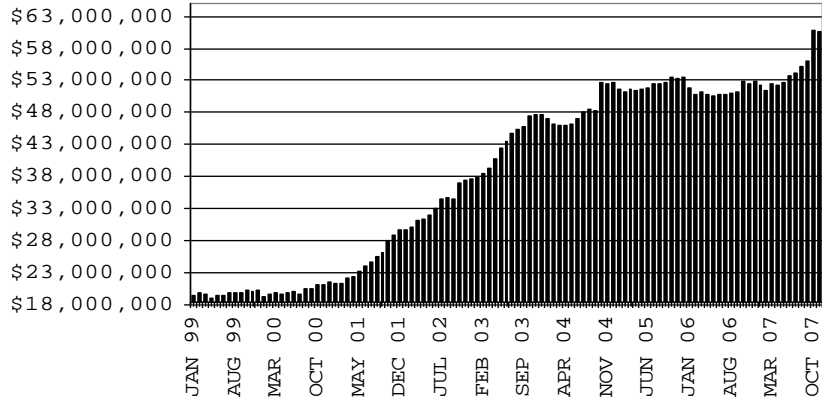
#### HOUSEHOLDS



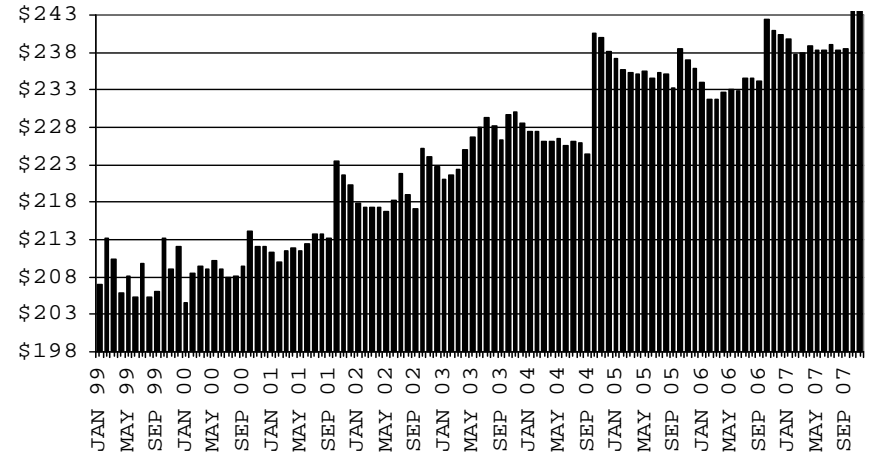
#### RECIPIENTS



#### TOTAL PAYMENTS



#### AVERAGE PAYMENT PER HOUSEHOLD



**TABLE 7A**  
**MEDICAL ASSISTANCE PROGRAM**  
**RECIPIENTS**

**NOVEMBER 2007**

	SOBRA WOMAN 133% FPL	SOBRA CHILD	ADULT W/O CHILD 100% FPL	FOSTER CARE	1931 36% FPL	FEDERAL EMERGENCY SERVICES	INFANTS	ADULT W/O CHILD 40% FPL	MEDICAL W/SPEND DOWN	SOBRA WOMAN 100% FPL	SOBRA CHILD 100% FPL	TRANSITIONAL MEDICAL T1 - T4	1931 100% FPL	YATI	OTHER	TOTAL RECIPIENTS
ARIZONA	11,496	61,960	37,717	9,714	259,169	85,189	50,658	89,099	5,299	3,321	159,488	42,775	76,526	241	22,228	914,880
DISTRICT I																
MARICOPA	5,918	34,330	16,005	4,827	134,295	65,467	30,476	38,912	2,893	1,673	88,160	21,023	35,436	112	10,850	490,377
DISTRICT II																
PIMA	1,741	9,472	7,412	2,786	40,689	10,658	7,115	16,399	795	548	25,129	6,943	13,846	79	4,016	147,628
DISTRICT III																
APACHE	269	1,365	859	38	10,491	97	974	4,247	73	94	3,694	1,126	2,261	0	345	25,933
COCONINO	382	1,405	1,149	125	6,788	528	1,209	2,894	86	105	3,630	1,283	2,082	11	347	22,024
NAVAJO	373	2,113	1,288	114	10,915	321	1,397	4,656	155	130	4,339	1,581	2,719	2	520	30,623
YAVAPAI	450	1,800	1,663	419	5,465	1,563	1,409	2,802	243	92	3,976	1,320	2,358	15	950	24,525
DISTRICT IV																
LA PAZ	38	233	209	18	1,192	197	174	557	23	16	577	227	317	0	143	3,921
MOHAVE	477	2,134	1,978	230	9,294	979	1,574	4,546	318	156	6,413	1,867	3,603	2	1,196	34,767
YUMA	586	2,590	2,319	249	11,337	2,203	1,929	3,324	189	181	7,985	2,490	4,945	1	1,172	41,500
DISTRICT V																
GILA	123	733	509	70	4,007	130	464	1,925	92	30	1,476	472	932	2	268	11,233
PINAL	633	3,644	1,864	487	13,802	1,737	2,226	4,923	231	155	6,838	2,121	3,569	9	1,152	43,391
DISTRICT VI																
COCHISE	245	1,111	1,339	252	5,989	658	846	2,270	120	73	3,502	1,157	2,216	6	726	20,510
GRAHAM	124	427	371	57	1,986	76	357	841	17	24	1,136	503	676	2	126	6,723
GREENLEE	30	33	38	12	309	6	59	103	6	1	108	67	60	0	23	855
SANTA CRUZ	107	570	714	30	2,610	569	449	700	58	43	2,525	595	1,506	0	394	10,870

**TABLE 7B**

**MEDICAL ASSISTANCE PROGRAM**

**RECIPIENTS**

**CHANGE FROM**

**OCTOBER 2007**

	SOBRA WOMAN 133% FPL	SOBRA CHILD	ADULT W/O CHILD 100% FPL	FOSTER CARE	1931 36% FPL	FEDERAL EMERGENCY SERVICES	INFANTS	ADULT W/O CHILD 40% FPL	MEDICAL W/SPEND DOWN	SOBRA WOMAN 100% FPL	SOBRA CHILD 100% FPL	TRANSITIONAL MEDICAL T1 - T4	1931 100% FPL	YATI	OTHER	TOTAL RECIPIENTS
ARIZONA	(323)	78	(2)	238	(583)	(1,123)	(546)	884	(170)	(148)	(103)	(341)	116	(11)	140	(1,894)
DISTRICT I																
MARICOPA	(173)	124	68	86	(100)	(899)	(404)	546	(129)	(69)	115	(424)	238	(7)	26	(1,002)
DISTRICT II																
PIMA	(90)	27	42	123	(298)	(112)	(68)	145	16	(4)	7	(135)	108	(1)	49	(191)
DISTRICT III																
APACHE	2	12	14	(1)	55	3	(15)	34	10	(8)	(139)	(30)	(78)	0	(4)	(145)
COCONINO	(1)	(17)	(26)	(4)	(98)	21	29	54	(1)	(3)	54	(3)	(15)	0	6	(4)
NAVAJO	1	(22)	(25)	3	(32)	(4)	17	13	15	(10)	(50)	49	(8)	(1)	(3)	(57)
YAVAPAI	(19)	(2)	(10)	19	(6)	(15)	(14)	31	(38)	(5)	53	(13)	15	0	49	45
DISTRICT IV																
LA PAZ	2	4	10	0	(33)	0	(5)	11	(3)	(2)	(20)	32	(9)	0	5	(8)
MOHAVE	(13)	45	27	3	123	(1)	(38)	83	(1)	(12)	96	(1)	63	0	11	385
YUMA	(36)	(48)	(110)	(5)	15	(73)	(32)	(34)	(14)	(15)	(260)	313	(223)	0	2	(520)
DISTRICT V																
GILA	6	(20)	6	14	(113)	(11)	(7)	20	(3)	(13)	14	(28)	18	0	(26)	(143)
PINAL	1	(29)	(3)	(4)	(61)	(19)	(15)	18	1	(2)	33	(7)	(1)	0	(18)	(106)
	5	9	9	18	(52)	8	8	2	(4)	(11)	(19)	(21)	19	0	(8)	(37)
DISTRICT VI																
COCHISE	(10)	7	12	0	1	(21)	(10)	(6)	(12)	4	2	(38)	0	(2)	(4)	(77)
GRAHAM	1	(2)	5	0	(60)	5	(3)	(8)	(10)	(5)	38	(29)	19	0	0	(49)
GREENLEE	1	1	(8)	0	7	(1)	0	(1)	1	0	(14)	(3)	(9)	0	0	(26)
SANTA CRUZ	6	(31)	(7)	0	(44)	(15)	4	(4)	(1)	(6)	1	(31)	(3)	0	29	(102)

**TABLE 7C**  
**MEDICAL ASSISTANCE PROGRAM**  
**RECIPIENTS**

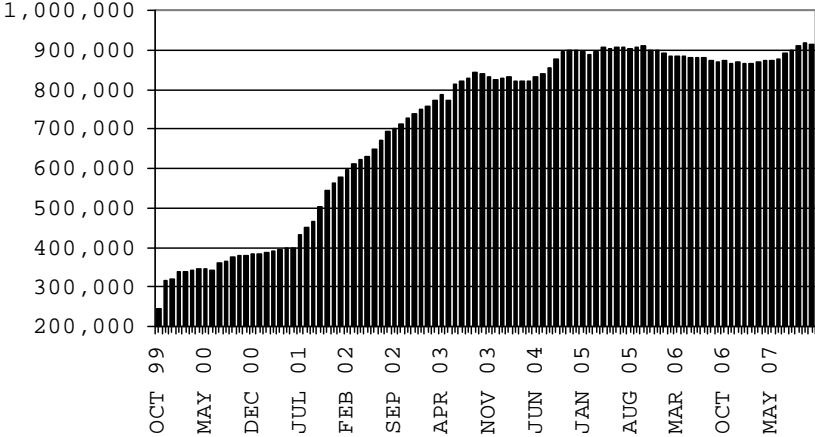
**CHANGE FROM**  
**NOVEMBER 2006**

	SOBRA WOMAN 133% FPL	SOBRA CHILD	ADULT W/O CHILD 100% FPL	FOSTER CARE	1931 36% FPL	FEDERAL EMERGENCY SERVICES	INFANTS	ADULT W/O CHILD 40% FPL	MEDICAL W/SPEND DOWN	SOBRA WOMAN 100% FPL	SOBRA CHILD 100% FPL	TRANSITIONAL MEDICAL T1 - T4	3E 1931 100% FPL	YATI	OTHER	TOTAL RECIPIENTS
ARIZONA	532	3,808	1,819	837	9,266	2,906	996	10,898	(68)	117	12,098	(3,725)	5,887	59	2,896	48,326
DISTRICT I																
MARICOPA	286	2,880	941	355	7,623	3,077	386	5,545	(22)	102	8,034	(1,893)	3,531	16	1,290	32,151
DISTRICT II																
PIMA	67	271	305	281	1,021	224	221	2,171	95	5	1,285	(594)	927	23	543	6,845
DISTRICT III																
APACHE	4	(48)	(34)	0	(305)	(7)	(36)	212	10	7	(23)	(160)	(7)	(1)	52	(336)
COCONINO	6	26	(34)	22	(223)	15	32	236	(32)	1	100	(212)	47	7	15	6
NAVAJO	38	(5)	1	(10)	118	35	80	452	5	12	118	(122)	58	0	69	849
YAVAPAI	21	66	33	51	313	(2)	27	415	(42)	(8)	324	(487)	230	9	147	1,097
DISTRICT IV																
LA PAZ	(6)	16	(19)	2	(143)	(12)	11	17	(1)	(6)	13	78	(15)	0	19	(46)
MOHAVE	3	25	227	9	524	(14)	(35)	624	(48)	14	814	154	296	0	212	2,805
YUMA	87	166	238	23	(241)	(260)	21	155	(13)	6	474	(26)	257	(2)	195	1,080
DISTRICT V																
GILA	(5)	(75)	(4)	(13)	25	(47)	(6)	164	15	(7)	(31)	(80)	20	(2)	9	(37)
PINAL	18	523	237	121	921	(24)	210	769	(30)	(1)	912	(101)	410	4	194	4,163
DISTRICT VI																
COCHISE	6	(35)	(7)	(4)	(255)	(85)	(3)	52	(4)	(6)	(13)	(56)	71	3	76	(260)
GRAHAM	1	(12)	(28)	(2)	(165)	9	14	51	(8)	3	26	(149)	(5)	2	16	(247)
GREENLEE	10	(5)	(8)	2	(15)	0	6	(35)	(3)	(5)	(30)	11	(15)	0	1	(86)
SANTA CRUZ	(4)	15	(29)	0	68	(3)	68	70	10	0	95	(88)	82	0	58	342

# CHART 7

## MEDICAL ASSISTANCE PROGRAM COMPARISON OF RECIPIENTS FOR 1999, 2000, 2001, 2002, 2003, 2004, 2005, 2006 & 2007

**TOTAL RECIPIENTS**



NEW SERIES WHICH INCLUDES 1931