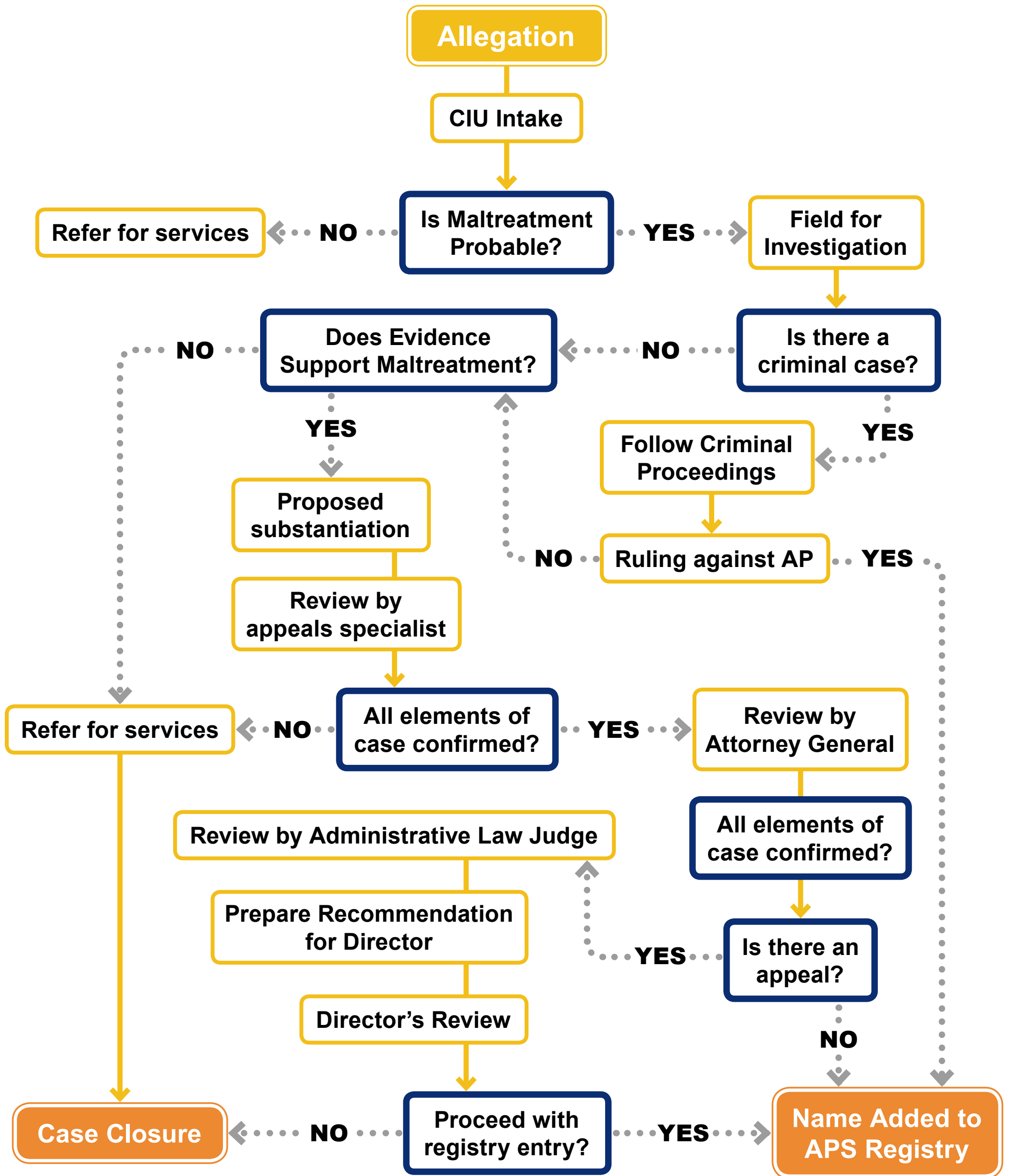


Adult Protective Services (APS) Investigation Process Map



Equal Opportunity Employer / Program • Auxiliary aids and services are available upon request to individuals with disabilities • To request this document in alternative format or for further information about this policy, contact the Division of Aging and Adult Services at 602-542-4446; TTY/TDD Services 7-1-1

AAA 1356A POSENG (7 20)