



DEPARTMENT OF ECONOMIC SECURITY

Your Partner For A Stronger Arizona

State of Arizona

Department of Economic Security

Family Assistance Administration

Statistical Bulletin

April, 2012

Phone: (602) 542-3678

<http://www.azdes.gov/appreports.aspx>

**** STATISTICAL BULLETIN ****
ARIZONA DEPARTMENT OF ECONOMIC SECURITY
FAMILY ASSISTANCE ADMINISTRATION
BOX 6123, PHOENIX, ARIZONA 85005
PHONE (602) 542-3678

APRIL 2012

THIS ISSUE OF THE STATISTICAL BULLETIN COMPARES APRIL 2012 DATA FOR EACH OF THE INDICATED PROGRAMS WITH THE INFORMATION FOR MARCH 2012 AND APRIL 2011. STATEWIDE SUMMARIES OF ACTIVITY WITHIN EACH OF THE SPECIFIC PROGRAMS FOR THIS REPORT PERIOD ARE DISCUSSED BELOW. THE TABLES COMPARE CURRENT AND PRIOR MONTH DATA. DISTRICT AND COUNTY COMPARISONS ARE PROVIDED WITHIN THIS BULLETIN

TANF SUMMARY

COMPARING TO MARCH 2012, APRIL 2012 CASES INCREASED BY 39 (0.22%) TO 17,394. RECIPIENTS INCREASED BY 227 (0.58%) TO 39,467. PAYMENTS INCREASED BY \$15,310 (0.42%) TO \$3,628,045. AVERAGE PAYMENT PER CASE INCREASED BY \$0.41 (0.20%) TO \$0.00. PAYEMENT PER RECIPIENT DECREASED BY \$0.14 (0.15%) TO \$91.93.

COMPARING TO APRIL 2011, APRIL 2012 CASES DECREASED BY 1,077 (5.83%). RECIPIENTS DECREASED BY 2,314 (5.54%). TOTAL PAYMENTS DECREASED BY \$268,870 (6.90%). THE AVERAGE PAYMENT PER CASE DECREASED BY \$2.39 (1.13%). THE AVERAGE PAYMENT PER RECIPIENT DECREASED BY \$1.34 (1.44%).

CASH ASSISTANCE (CA)

COMPARING TO MARCH 2012, APRIL 2012 CASES INCREASED BY 15 (0.09%) TO 16,156. RECIPIENTS INCREASED BY 99 (0.28%) TO 35,959. PAYMENTS DECREASED BY \$1,300 (0.04%) TO \$3,416,183. AVERAGE PAYMENT PER CASE DECREASED BY \$0.28 (0.13%) TO \$211.45. PAYEMENT PER RECIPIENT DECREASED BY \$0.30 (0.31%) TO \$95.00.

COMPARING TO APRIL 2011, APRIL 2012 CASES DECREASED BY 1,163 (6.72%). RECIPIENTS DECREASED BY 2,558 (6.64%). TOTAL PAYMENTS DECREASED BY \$284,873 (7.70%). THE AVERAGE PAYMENT PER CASE DECREASED BY \$2.25 (1.05%). THE AVERAGE PAYMENT PER RECIPIENT DECREASED BY \$1.09 (1.13%).

CASH ASSISTANCE UNEMPLOYED PARENT PROGRAM (CA-UP)

COMPARING TO MARCH 2012, APRIL 2012 CASES INCREASED BY 33 (6.63%) TO 531. RECIPIENTS INCREASED BY 128 (6.75%) TO 2,024. PAYMENTS INCREASED BY \$10,831 (7.55%) TO \$154,244. AVERAGE PAYMENT PER CASE INCREASED BY \$2.50 (0.87%) TO \$290.48. PAYMENT PER RECIPIENT INCREASED BY \$0.57 (0.75%) TO \$76.21.

COMPARING TO APRIL 2011, APRIL 2012 CASES DECREASED BY 21 (3.80%). RECIPIENTS INCREASED BY 5 (0.25%). TOTAL PAYMENTS INCREASED BY \$647 (0.42%). THE AVERAGE PAYMENT PER CASE INCREASED BY \$12.23 (4.40%). THE AVERAGE PAYMENT PER RECIPIENT INCREASED BY \$0.13 (0.18%).

CASH ASSISTANCE WITH GRANT UNDER \$100 (CA-MOE)

COMPARING TO MARCH 2012, APRIL 2012 CASES DECREASED BY 13 (1.84%) TO 694. RECIPIENTS DECREASED BY 12 (0.83%) TO 1,442. PAYMENTS INCREASED BY \$5,626 (10.97%) TO \$56,894. AVERAGE PAYMENT PER CASE INCREASED BY \$9.47 (13.06%) TO \$81.98. AVERAGE PAYMENT PER RECIPIENT INCREASED BY \$4.19 (11.88%) TO \$39.45.

COMPARING TO APRIL 2011, APRIL 2012 CASES INCREASED BY 117 (20.28%). RECIPIENTS INCREASED BY 260 (22.00%). TOTAL PAYMENTS INCREASED BY \$16,025 (39.21%). THE AVERAGE PAYMENT PER CASE INCREASED BY \$11.15 (15.74%). THE AVERAGE PAYMENT PER RECIPIENT INCREASED BY \$4.87 (14.08%).

CASH ASSISTANCE UNEMPLOYED PARENT PROGRAM WITH GRANT UNDER \$100 (CA-UP-MOE) NEW PROGRAM STARTING 7/01

COMPARING TO MARCH 2012, APRIL 2012 CASES INCREASED BY 4 (44.44%) TO 13. RECIPIENTS INCREASED BY 12 (40.00%) TO 42. PAYMENTS INCREASED BY \$153 (26.80%) TO \$724. AVERAGE PAYMENT PER CASE DECREASED BY \$7.75 (12.22%) TO \$55.69. PAYEMENT PER RECIPIENT DECREASED BY \$1.79 (9.41%) TO \$17.24.

COMPARING TO APRIL 2011, APRIL 2012 CASES DECREASED BY 10 (43.48%). RECIPIENTS DECREASED BY 21 (3.68%). TOTAL PAYMENTS DECREASED BY \$669 (48.03%). THE AVERAGE PAYMENT PER CASE DECREASED BY \$4.88 (8.06%). THE AVERAGE PAYMENT PER RECIPIENT DECREASED BY \$4.87 (22.03%).

TUBERCULOSIS CONTROL PROGRAM (TC)

COMPARING TO MARCH 2012, APRIL 2012 CASES DECREASED BY 1 (25.00%) TO 3. RECIPIENTS DECREASED BY 1 (25.00%) TO 3. PAYMENTS DECREASED BY \$108 (21.09%) TO \$404. AVERAGE PAYMENT PER CASE INCREASED BY \$80.58 (62.95%) TO \$208.58. AVERAGE PAYMENT PER RECIPIENT INCREASED BY \$6.67 (5.21%) TO \$134.67.

COMPARING TO APRIL 2011, APRIL 2012 CASES DECREASED BY 2 (40.00%). RECIPIENTS DECREASED BY 2 (40.00%). TOTAL PAYMENTS DECREASED BY \$266 (39.70%). THE AVERAGE PAYMENT PER CASE INCREASED BY \$74.58 (55.66%). THE AVERAGE PAYMENT PER RECIPIENT INCREASED BY \$0.67 (0.50%).

SUPPLEMENTAL NUTRITION ASSISTANCE PROGRAM (SNAP)

COMPARING TO MARCH 2012, APRIL 2012 SUPPLEMENTAL NUTRITION ASSISTANCE HOUSEHOLDS DECREASED BY 3,229 (0.67%) TO 480,166. PERSONS RECEIVING SUPPLEMENTAL NUTRITION ASSISTANCE DECREASED BY 6,183 (0.55%) TO 1,112,064. TOTAL COUPON ISSUANCE DECREASED BY \$692,286 (0.49%) TO \$139,578,301. THE AVERAGE HOUSEHOLD ALLOTMENT INCREASED BY \$0.51 (0.18%) TO \$290.69. THE AVERAGE ALLOTMENT PER PERSON INCREASED BY \$0.07 (0.06%) TO \$125.51.

COMPARING TO APRIL 2011, APRIL 2012 SUPPLEMENTAL NUTRITION ASSISTANCE HOUSEHOLDS INCREASED BY 22,495 (4.92%). PERSONS RECEIVING SUPPLEMENTAL NUTRITION ASSISTANCE INCREASED BY 64,976 (6.21%). TOTAL COUPON ISSUANCE INCREASED BY \$6,903,740 (5.20%). THE AVERAGE ALLOTMENT PER HOUSEHOLD INCREASED BY \$0.80 (0.28%). THE AVERAGE ALLOTMENT PER PERSON DECREASED BY \$1.20 (0.95%).

MEDICAL ASSISTANCE PROGRAM (MA) NEW TABLE INCLUDES PROP. 204 CATEGORIES

COMPARING TO MARCH 2012, APRIL 2012 TOTAL RECIPIENTS TOTAL RECIPIENTS DECREASED BY 6,777 (0.59%). SOBRA WOMEN AT 140% FPL INCREASED BY 237 (2.03%). SOBRA CHILDREN DECREASED BY 1,140 (2.17%). ADULTS W/O CHILD AT 100% DECREASED BY 2,166 (6.30%). FOSTER CARE INCREASED BY 188 (0.00%). 1931 AT 36% FPL INCREASED BY 604 (0.00%). EMERGENCY SERVICES INCREASED BY 774 (1.24%). INFANTS DECREASED BY 252 (0.55%). ADULT W/O CHILD AT 140% DECREASED BY 5,330 (5.13%). MEDICAL W/SPEND DOWN INCREASED BY 0 (100.00%). SOBRA WOMAN AT 100% INCREASED BY 215 (5.10%). SOBRA CHILD AT 100% INCREASED BY 945 (0.39%). TRANSITIONAL MEDICAL DECREASED BY 754 (1.48%). 1931 AT 100% DECREASED BY 53 (0.04%). YATI INCREASED BY 2 (0.58%). ALL OTHER CATEGORIES DECREASED BY 47 (0.16%).

COMPARING TO APRIL 2011, APRIL 2012 TOTAL RECIPIENTS TOTAL RECIPIENTS DECREASED BY 72,853 (6.03%). SOBRA WOMEN AT 140% FPL INCREASED BY 977 (8.95%). SOBRA CHILDREN DECREASED BY 17,773 (25.70%). ADULTS W/O CHILD AT 100% DECREASED BY 32,183 (50.00%). FOSTER CARE INCREASED BY 1,734 (13.65%). 1931 AT 36% FPL INCREASED BY 33,828 (10.03%). EMERGENCY SERVICES INCREASED BY 13,242 (26.50%). INFANTS INCREASED BY 130 (0.29%). ADULT W/O CHILD AT 140% DECREASED BY 75,384 (43.34%). MEDICAL W/SPEND DOWN DECREASED BY 7,392 (100.00%). SOBRA WOMAN AT 100% INCREASED BY 423 (10.56%). SOBRA CHILD AT 100% INCREASED BY 8,117 (3.47%). TRANSITIONAL MEDICAL INCREASED BY 5,138 (11.40%). 1931 AT 100% DECREASED BY 3,322 (2.64%). YATI INCREASED BY 25 (7.74%). ALL OTHER CATEGORIES DECREASED BY 413 (1.42%).

TANF SUMMARY

TABLES 1, 1A, 1B, & 1C: ARIZONA 1/

	APRIL 2012							MARCH 2012			CHANGE FROM APRIL 2011		
	FAMILIES (CASES)	PERSONS (RECIP.)	ADULTS	CHILDREN	TOTAL PAYMENTS	AVERAGE PAYMENT/ CASE	AVERAGE PAYMENT/ RECIP.	FAMILIES (CASES)	PERSONS (RECIP.)	TOTAL PAYMENTS	FAMILIES (CASES)	PERSONS (RECIP.)	TOTAL PAYMENTS
	ARIZONA	17,394	39,467	10,713	28,754	3,628,045	208.58	91.93	39	227	15,310	(1,077)	(2,314)
REGION													
MARICOPA	10,915	25,340	6,752	18,588	2,280,690	208.95	90.00	155	431	32,957	(473)	(1,115)	(127,317)
NORTHERN	1,047	2,335	684	1,651	212,757	203.21	91.12	11	23	(308)	38	88	3,375
APACHE	43	110	31	79	9,629	223.93	87.54	(3)	(5)	(629)	(1)	24	1,189
COCONINO	86	195	58	137	16,433	191.08	84.27	3	0	(329)	18	25	1,433
MOHAVE	637	1,382	397	985	128,815	202.22	93.21	21	73	3,724	54	146	8,593
NAVAJO	281	648	198	450	57,880	205.98	89.32	(10)	(45)	(3,074)	(33)	(107)	(7,840)
CENTRAL	1,993	4,359	1,250	3,109	413,363	207.41	94.83	(16)	(1)	838	(27)	33	(13,602)
GILA	374	789	273	516	89,171	238.43	113.02	(36)	(71)	(5,861)	(29)	(68)	(9,492)
LA PAZ	52	112	27	85	9,720	186.92	86.79	2	(1)	324	(13)	(18)	(2,975)
PINAL	880	1,955	546	1,409	176,954	201.08	90.51	18	72	7,272	25	131	5,604
YAVAPAI	297	619	156	463	58,812	198.02	95.01	(1)	(9)	(593)	14	71	3,890
YUMA	390	884	248	636	78,706	201.81	89.03	1	8	(304)	(24)	(83)	(10,629)
SOUTHERN	3,439	7,433	2,027	5,406	721,235	209.72	97.03	(111)	(226)	(18,177)	(615)	(1,320)	(131,326)
COCHISE	373	752	177	575	75,471	202.34	100.36	(11)	(18)	(2,062)	39	106	7,581
GRAHAM	202	425	139	286	46,844	231.90	110.22	6	22	1,961	(30)	(33)	(5,707)
GREENLEE	15	38	12	26	2,708	180.53	71.26	(1)	(2)	(416)	0	0	(587)
PIMA	2,733	5,968	1,643	4,325	572,011	209.30	95.85	(100)	(218)	(17,146)	(633)	(1,398)	(134,362)
SANTA CRUZ	116	250	56	194	24,201	208.63	96.80	(5)	(10)	(514)	9	5	1,749

1/EXCLUDES: PRIOR MONTH NET TOTALS OF 865 CASES; 2,302 RECIPIENTS; \$131,766.

GRANT DIVERSION TOTALS OF: 523 CASES; \$430,745.

ZERO PAY TOTALS OF 1,180 CASES; 3,529 RECIPIENTS.

RRP: 143 CASES; 210 RECIPIENTS; \$27,676.

1/INCLUDES: TANF CHILD ONLY: 9,021 CASES; 15,311 RECIPIENTS; \$1,772,148.

	CURRENT MO. CASES	CURRENT MO. RECIP.	CURRENT MO. DOLLARS	PRIOR MO. CASES	PRIOR MO. RECIP	PRIOR MO. DOLLARS
PASQUAYAQUI	229	633	\$68,845	11	38	\$1,531
WM APACHE	0	0	\$0	0	0	\$0
SALT RIVER	76	243	\$22,771	6	12	\$513
SAN CARLOS	381	796	\$94,096	7	16	\$333
HOPI	87	227	\$19,242	0	0	\$0
TOTAL	773	1,899	\$204,954	24	66	\$2,377

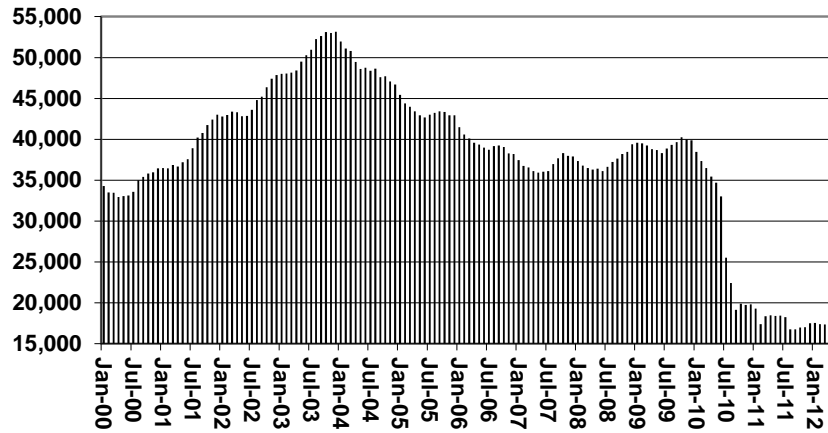
TANF SUMMARY

TABLES 1, 1A, 1B, & 1C

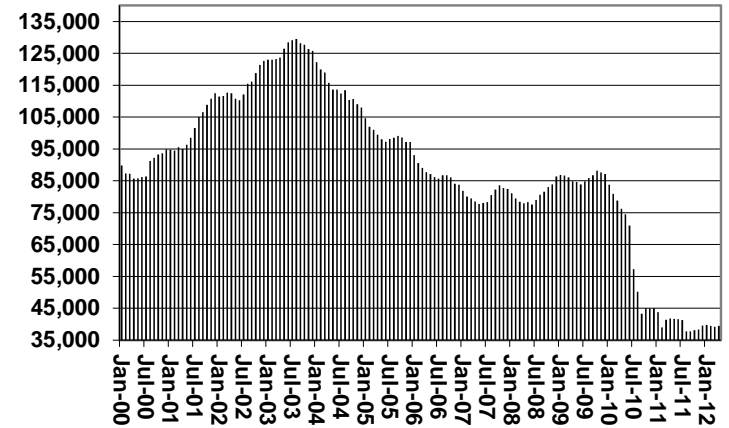
COMPARISON OF CASES, RECIPIENTS, PAYMENTS & AVERAGE PAYMENTS

FOR 2000, 2001, 2002, 2003, 2004, 2005, 2006, 2007, 2008, 2009, 2010, 2011, & 2012

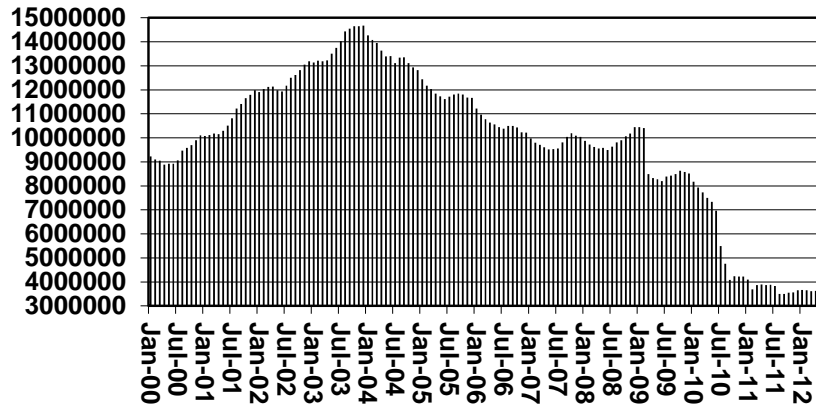
Cases



Recipients



Payments



Average Payments Per Recipient

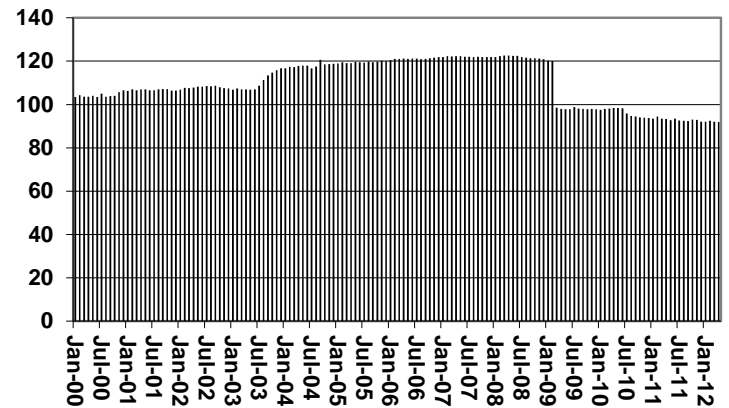


TABLE 1
CASH ASSISTANCE: ARIZONA 1/

	APRIL 2012							CHANGE FROM			MARCH 2012			APRIL 2011		
	FAMILIES (CASES)	(RECIP.)	ADULTS	CHILDREN	TOTAL PAYMENTS	AVERAGE PAYMENT/ CASE	AVERAGE PAYMENT/ RECIP.	FAMILIES (CASES)	PERSONS (RECIP.)	TOTAL PAYMENTS	FAMILIES (CASES)	PERSONS (RECIP.)	TOTAL PAYMENTS	FAMILIES (CASES)	PERSONS (RECIP.)	TOTAL PAYMENTS
	ARIZONA	16,156	35,959	9,335	26,624	3,416,183	211.45	95.00	15	99	(1,300)	(1,163)	(2,558)	(284,873)		
REGION																
MARICOPA	10,168	23,198	5,965	17,233	2,155,182	211.96	92.90	152	376	25,711	(484)	(1,135)	(125,452)			
NORTHERN	963	2,103	586	1,517	198,856	206.50	94.56	3	10	(41)	12	27	893			
APACHE	37	90	21	69	7,965	215.27	88.50	0	3	(197)	(3)	14	72			
COCONINO	77	179	52	127	15,837	205.68	88.47	2	4	49	15	27	1,777			
MOHAVE	583	1,225	333	892	119,688	205.30	97.70	8	33	2,435	33	88	6,533			
NAVAJO	266	609	180	429	55,366	208.14	90.91	(7)	(30)	(2,328)	(33)	(102)	(7,489)			
CENTRAL	1,818	3,871	1,036	2,835	383,478	210.93	99.06	(35)	(60)	(4,298)	(81)	(153)	(21,059)			
GILA	347	712	227	485	82,872	238.82	116.39	(49)	(111)	(9,553)	(53)	(138)	(15,583)			
LA PAZ	47	104	25	79	9,410	200.21	90.48	1	(1)	313	(11)	(12)	(2,560)			
PINAL	796	1,710	443	1,267	161,622	203.04	94.52	13	52	4,942	(17)	(3)	(2,916)			
YAVAPAI	271	546	128	418	54,565	201.35	99.94	(3)	(15)	(1,039)	8	48	2,829			
YUMA	357	799	213	586	75,009	210.11	93.88	(2)	(3)	(310)	(37)	(113)	(11,104)			
SOUTHERN	3,207	6,787	1,748	5,039	678,667	211.62	100.00	(100)	(209)	(21,323)	(581)	(1,232)	(130,980)			
COCHISE	354	714	163	551	72,989	206.18	102.23	(12)	(15)	(2,693)	34	101	7,143			
GRAHAM	191	393	120	273	44,039	230.57	112.06	4	14	881	(38)	(57)	(7,818)			
GREENLEE	12	26	7	19	2,332	194.33	89.69	(2)	(4)	(485)	(2)	(10)	(933)			
PIMA	2,540	5,413	1,404	4,009	535,804	210.95	98.98	(89)	(200)	(18,631)	(583)	(1,283)	(131,334)			
SANTA CRUZ	110	241	54	187	23,503	213.66	97.52	(1)	(4)	(395)	8	17	1,962			

1/EXCLUDES: PRIOR MONTH NET TOTALS OF: 358 CASES; 942 RECIPIENTS; \$86,989.
GRANT DIVERSION TOTALS OF: 523 CASES; \$430,745.
ZERO PAY TOTALS OF 1,173 CASES; 3,503 RECIPIENTS.

CASES WITH GRANT UNDER \$100 (SEE TABLE 1B).

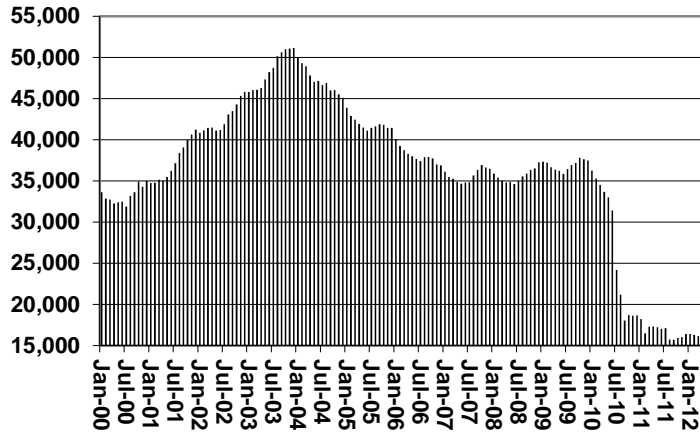
	CURRENT MO. CASES	CURRENT MO. RECIP.	CURRENT MO. DOLLARS	PRIOR MO. CASES	PRIOR MO. RECIP.	PRIOR MO. DOLLARS
PASQUAYYAQUI	226	615	\$67,874	10	33	\$1,303
WM APACHE	0	0	\$0	0	0	\$0
SALT RIVER	76	243	\$22,771	6	12	\$513
SAN CARLOS	361	736	\$88,551	6	13	\$298
HOPI	87	227	\$19,242	0	0	\$0
TOTAL	750	1,821	\$198,438	22	58	\$2,114

CHART 1

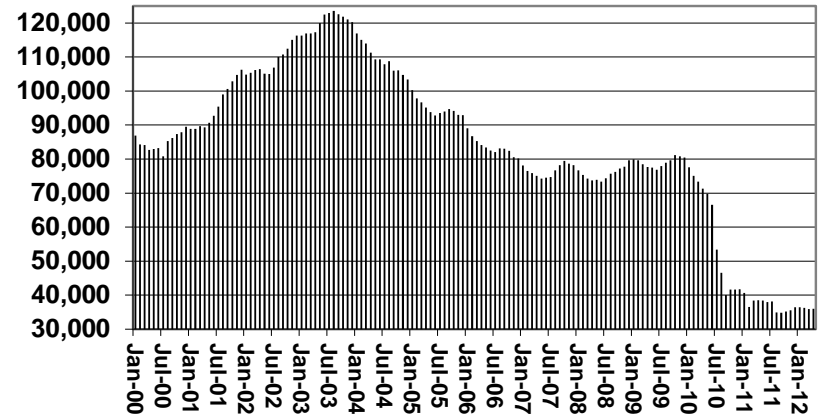
CASH ASSISTANCE PROGRAM

COMPARISON OF CASES, RECIPIENTS, PAYMENTS & AVERAGE PAYMENTS FOR 2000, 2001, 2002, 2003, 2004, 2005, 2006, 2007, 2008, 2009, 2010, 2011, & 2012

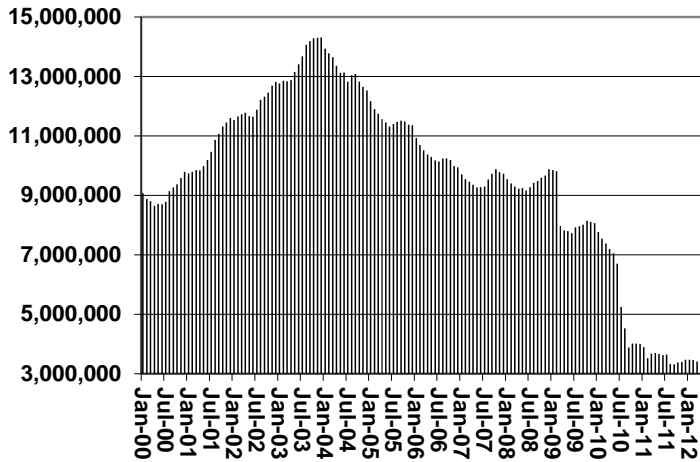
Cases



Recipients



Payments



Average Payment Per Recipient

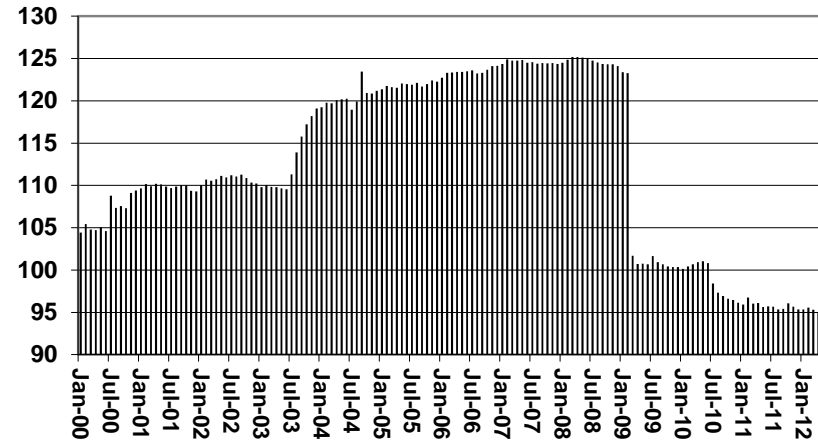


TABLE 1A
CA-UP

CASH ASSISTANCE UNEMPLOYED PARENT PROGRAM: ARIZONA 1/

	APRIL 2012							CHANGE FROM			MARCH 2012			APRIL 2011		
	FAMILIES (CASES)	PERSONS (RECIP.)	ADULTS	CHILDREN	TOTAL PAYMENTS	AVERAGE PAYMENT/ CASE	AVERAGE PAYMENT/ RECIP.	FAMILIES (CASES)	PERSONS (RECIP.)	TOTAL PAYMENTS	FAMILIES (CASES)	PERSONS (RECIP.)	TOTAL PAYMENTS			
ARIZONA	531	2,024	955	1,069	154,244	290.48	76.21	33	128	10,831	(21)	5	647			
REGION																
MARICOPA	296	1,175	529	646	88,574	299.24	75.38	7	56	2,784	(59)	(128)	(11,951)			
NORTHERN	34	127	62	65	10,255	301.62	80.75	(5)	(21)	(1,119)	(1)	(5)	637			
APACHE	6	20	10	10	1,664	277.33	83.20	(1)	(4)	(237)	5	17	1,386			
COCONINO	0	0	0	0	0	0.00	0.00	(2)	(9)	(603)	(2)	(11)	(628)			
MOHAVE	22	83	40	43	6,726	305.73	81.04	2	7	529	0	(1)	459			
NAVAJO	6	24	12	12	1,865	310.83	77.71	(4)	(15)	(808)	(4)	(10)	(580)			
CENTRAL	85	310	154	156	22,891	269.31	73.84	17	62	5,620	48	172	12,942			
GILA	23	71	44	27	6,053	263.17	3.71	12	38	3,538	23	71	6,053			
LA PAZ	0	0	0	0	0	0.00	0.00	0	0	0	(1)	(4)	(335)			
PINAL	46	171	79	92	12,134	263.78	70.96	5	24	2,082	26	105	7,224			
YAVAPAI	8	38	16	22	2,753	344.13	72.45	0	1	215	(2)	6	329			
YUMA	8	30	15	15	1,951	243.88	65.03	0	(1)	(139)	1	2	(291)			
SOUTHERN	116	412	210	202	32,524	280.38	78.94	14	31	3,470	(8)	(42)	(1,019)			
COCHISE	5	12	6	6	1,098	219.60	91.50	3	5	485	(1)	(8)	(332)			
GRAHAM	8	24	16	8	2,452	0.00	0.00	2	5	1,041	6	17	1,840			
GREENLEE	1	3	2	1	209	209.00	69.67	0	0	0	1	3	209			
PIMA	102	373	186	187	28,765	282.01	77.12	10	22	2,108	(11)	(39)	(2,040)			
SANTA CRUZ	0	0	0	0	0	0.00	0.00	(1)	(1)	(164)	(3)	(15)	(696)			

1/EXCLUDES: PRIOR MONTH NET TOTALS OF: 54 CASES; 206 RECIPIENTS; \$15,341.
GRANT DIVERSION TOTALS OF: 0 CASES; \$0.
ZERO PAY TOTALS OF 7 CASES; 26 RECIPIENTS.

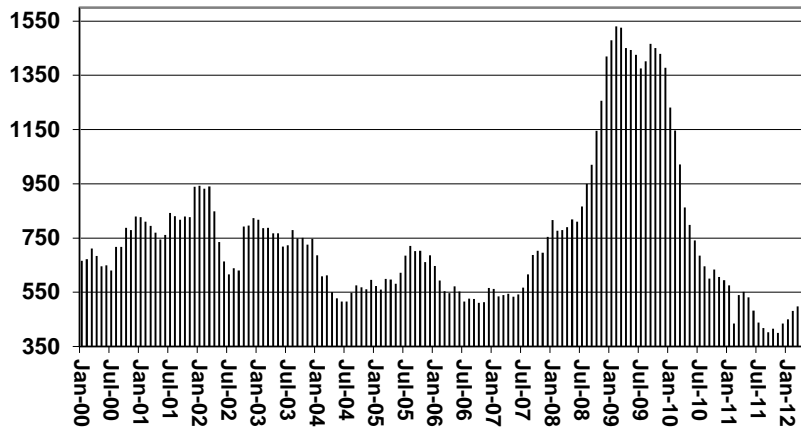
CASES WITH GRANT UNDER \$100 (SEE TABLE 1C).

	CURRENT MO. CASES	CURRENT MO. RECIP.	CURRENT MO. DOLLARS	PRIOR MO. CASES	PRIOR MO. RECIP.	PRIOR MO. DOLLARS
PASQUAY/AQUI	3	18	\$971	1	5	\$228
WM APACHE	0	0	\$0	0	0	\$0
SALT RIVER	0	0	\$0	0	0	\$0
SAN CARLOS	20	60	\$5,545	1	3	\$35
HOPI	0	0	\$0	0	0	\$0
TOTAL	23	78	\$6,516	2	8	\$263

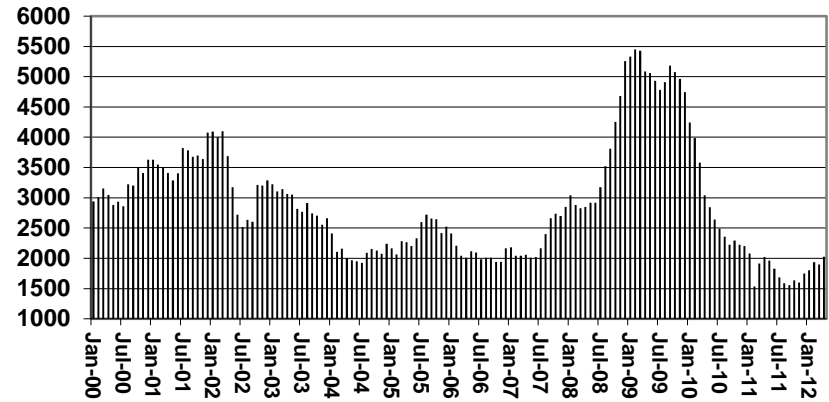
CHART 1A

CASH ASSISTANCE UNEMPLOYED PARENT PROGRAM COMPARISON OF CASES, RECIPIENTS, PAYMENTS & AVERAGE PAYMENTS FOR 2000, 2001, 2002, 2003, 2004, 2005, 2006, 2007, 2008, 2009, 2010, 2011, & 2012

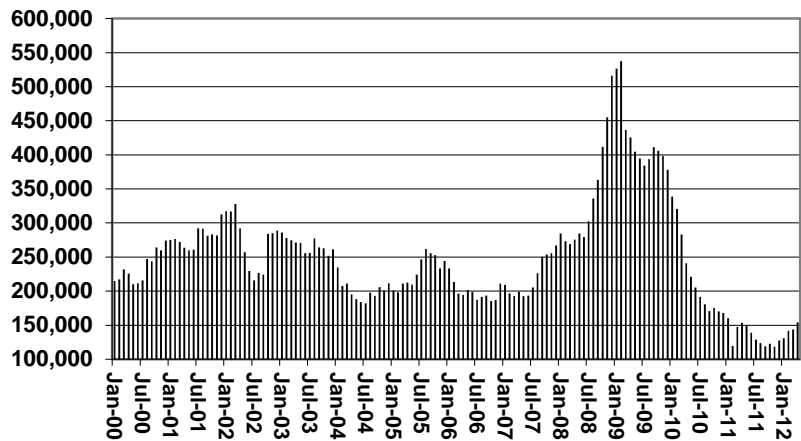
Cases



Recipients



Payments



Average Payment Per Recipient

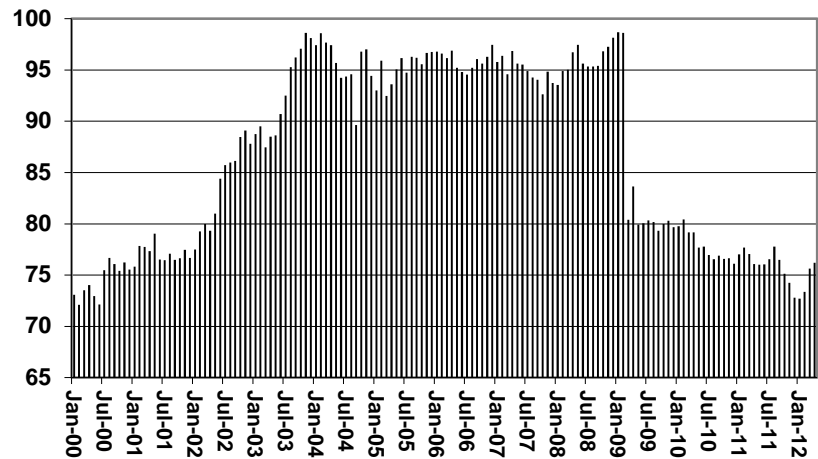


TABLE 1B 1/

CASH ASSISTANCE: ARIZONA
CASES WITH GRANT UNDER \$100

	APRIL 2012							CHANGE FROM			MARCH 2012			APRIL 2011		
	FAMILIES (CASES)	PERSONS (RECIP.)	ADULTS	CHILDREN	TOTAL PAYMENTS	AVERAGE PAYMENT/ CASE	AVERAGE PAYMENT/ RECIP.	FAMILIES (CASES)	PERSONS (RECIP.)	TOTAL PAYMENTS	FAMILIES (CASES)	PERSONS (RECIP.)	TOTAL PAYMENTS	FAMILIES (CASES)	PERSONS (RECIP.)	TOTAL PAYMENTS
	ARIZONA	694	1,442	403	1,039	56,894	81.98	39.45	(13)	(12)	5,626	117	260	16,025		
REGION																
MARICOPA	446	950	252	698	36,688	82.26	38.62	(4)	(2)	4,546	85	184	11,018			
NORTHERN	49	104	36	68	3,594	73.35	34.56	13	34	852	26	65	1,793			
APACHE	0	0	0	0	0	0.00	0.00	(2)	(4)	(195)	(3)	(7)	(269)			
COCONINO	8	15	6	9	544	68.00	36.27	3	5	225	4	8	232			
MOHAVE	32	74	24	50	2,401	75.03	32.45	11	33	760	21	59	1,601			
NAVAJO	9	15	6	9	649	72.11	43.27	1	0	62	4	5	229			
CENTRAL	88	171	56	115	6,891	78.31	40.30	5	8	686	35	66	2,684			
GILA	4	6	2	4	246	61.50	41.00	1	2	154	1	(1)	38			
LA PAZ	5	8	2	6	310	62.00	38.75	1	0	11	(1)	(2)	(80)			
PINAL	37	71	22	49	3,158	85.35	44.48	(1)	(7)	208	15	26	1,256			
YAVAPAI	18	35	12	23	1,494	83.00	42.69	2	5	231	8	17	732			
YUMA	24	51	18	33	1,683	70.13	33.00	2	8	82	12	26	738			
SOUTHERN	111	217	59	158	9,721	87.58	44.80	(27)	(52)	(458)	(29)	(55)	530			
COCHISE	13	23	6	17	1,313	101.00	57.09	(1)	(5)	166	5	10	699			
GRAHAM	3	8	3	5	353	117.67	44.13	0	3	39	2	7	271			
GREENLEE	1	2	1	1	69	69.00	34.50	1	2	69	0	0	39			
PIMA	88	175	47	128	7,288	82.82	41.65	(24)	(47)	(777)	(40)	(75)	(962)			
SANTA CRUZ	6	9	2	7	698	116.33	77.56	(3)	(5)	45	4	3	483			

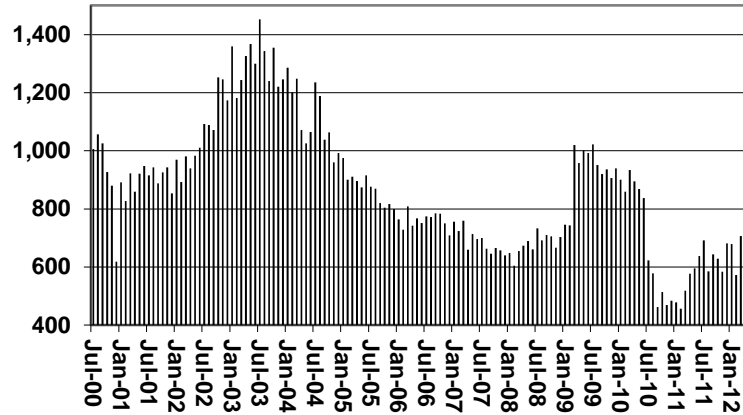
EXCLUDES: PRIOR MONTH NET TOTALS OF 419 CASES; 1,025 RECIPIENTS; \$27,700.

CHART 1B

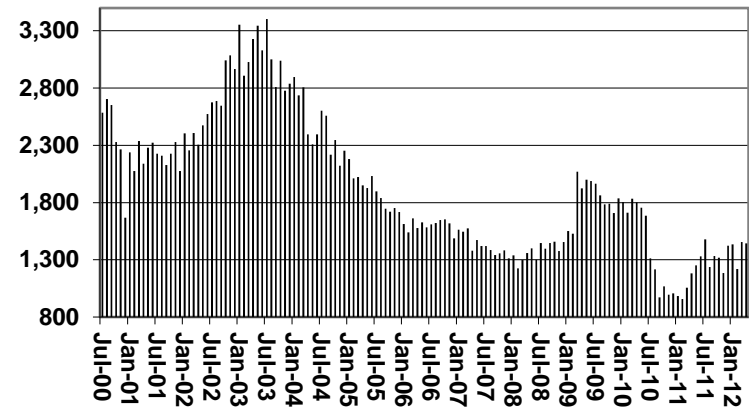
CASH ASSISTANCE PROGRAM CASES WITH GRANT UNDER \$100

FOR 2000, 2001, 2002, 2003, 2004, 2005, 2006, 2007, 2008, 2009, 2010, 2011, & 2012

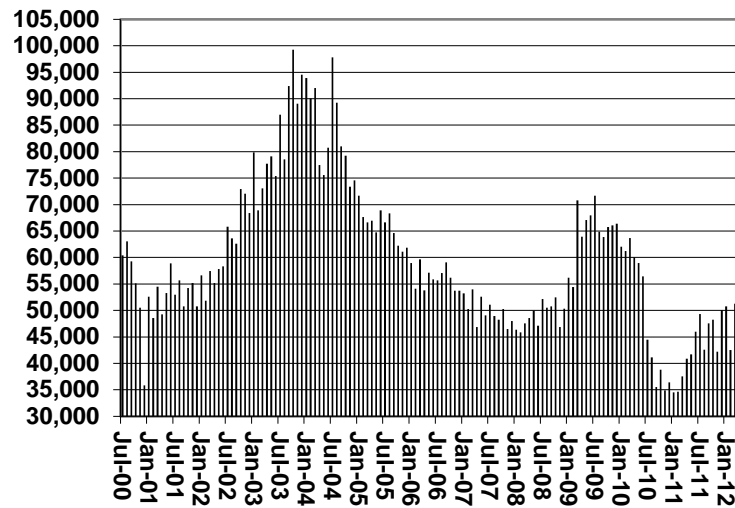
Cases



Recipients



Payments



Average Payment Per Recipient

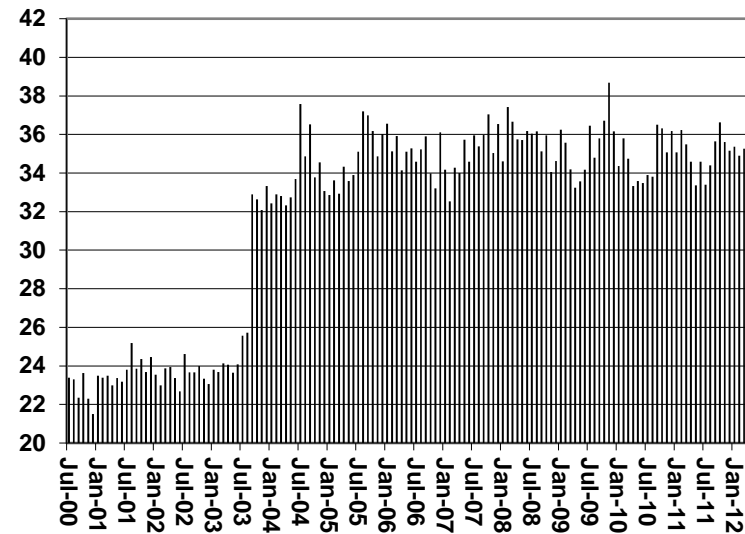


TABLE 1C 1/

CASH ASSISTANCE UNEMPLOYED PARENT PROGRAM: ARIZONA
 CASES WITH GRANT UNDER \$100

	APRIL 2012							CHANGE FROM			APRIL 2011		
								MARCH 2012					
	FAMILIES (CASES)	PERSONS (RECIP.)	ADULTS	CHILDREN	TOTAL PAYMENTS	AVERAGE PAYMENT/ CASE	AVERAGE PAYMENT/ RECIP.	FAMILIES (CASES)	PERSONS (RECIP.)	TOTAL PAYMENTS	FAMILIES (CASES)	PERSONS (RECIP.)	TOTAL PAYMENTS
ARIZONA	13	42	20	22	724	55.69	17.24	4	12	153	(10)	(21)	(669)
REGION													
MARICOPA	5	17	6	11	246	49.20	14.47	0	1	(84)	(15)	(36)	(932)
NORTHERN	1	1	0	1	52	52.00	52.00	0	0	0	1	1	52
APACHE	0	0	0	0	0	0.00	0.00	0	0	0	0	0	0
COCONINO	1	1	0	1	52	52.00	52.00	0	0	0	1	1	52
MOHAVE	0	0	0	0	0	0.00	0.00	0	0	0	0	0	0
NAVAJO	0	0	0	0	0	0.00	0.00	0	0	0	0	0	0
CENTRAL	2	7	4	3	103	51.50	14.71	2	7	103	1	5	68
GILA	0	0	0	0	0	0.00	0.00	0	0	0	0	0	0
LA PAZ	0	0	0	0	0	0.00	0.00	0	0	0	0	0	0
PINAL	1	3	2	1	40	40.00	13.33	1	3	40	1	3	40
YAVAPAI	0	0	0	0	0	0.00	0.00	0	0	0	0	0	0
YUMA	1	4	2	2	63	63.00	15.75	1	4	63	0	2	28
SOUTHERN	5	17	10	7	323	64.60	19.00	2	4	134	3	9	143
COCHISE	1	3	2	1	71	71.00	23.67	(1)	(3)	(20)	1	3	71
GRAHAM	0	0	0	0	0	0.00	0.00	0	0	0	0	0	0
GREENLEE	1	7	2	5	98	98.00	14.00	0	0	0	1	7	98
PIMA	3	7	6	1	154	51.33	22.00	3	7	154	1	(1)	(26)
SANTA CRUZ	0	0	0	0	0	0.00	0.00	0	0	0	0	0	0

EXCLUDES: PRIOR MONTH NET TOTALS OF 34 CASES; 129 RECIPIENTS; \$1,736.

TABLE 4
TUBERCULOSIS CONTROL: ARIZONA 1/

	APRIL 2012					CHANGE FROM			APRIL 2011		
						MARCH 2012					
	NUMBER OF CASES	PERSONS (RECIP.)	TOTAL PAYMENTS	AVERAGE PAYMENT/ CASE	AVERAGE PAYMENT/ RECIP.	NUMBER OF CASES	PERSONS (RECIP.)	TOTAL PAYMENTS	NUMBER OF CASES	PERSONS (RECIP.)	TOTAL PAYMENTS
ARIZONA	3	3	404	134.67	134.67	(1)	(1)	(108)	(2)	(2)	(266)
REGION											
MARICOPA	2	2	346	173.00	173.00	(1)	(1)	(108)	(3)	(3)	(324)
NORTHERN	1	1	58	58.00	58.00	0	0	0	1	1	58
APACHE	0	0	0	0.00	0.00	0	0	0	0	0	0
COCONINO	0	0	0	0.00	0.00	0	0	0	0	0	0
MOHAVE	1	1	58	58.00	58.00	0	0	0	1	1	58
NAVAJO	0	0	0	0.00	0.00	0	0	0	0	0	0
CENTRAL	0	0	0	0.00	0.00	0	0	0	0	0	0
GILA	0	0	0	0.00	0.00	0	0	0	0	0	0
LA PAZ	0	0	0	0.00	0.00	0	0	0	0	0	0
PINAL	0	0	0	0.00	0.00	0	0	0	0	0	0
YAVAPAI	0	0	0	0.00	0.00	0	0	0	0	0	0
YUMA	0	0	0	0.00	0.00	0	0	0	0	0	0
SOUTHERN	0	0	0	0.00	0.00	0	0	0	0	0	0
COCHISE	0	0	0	0.00	0.00	0	0	0	0	0	0
GRAHAM	0	0	0	0.00	0.00	0	0	0	0	0	0
GREENLEE	0	0	0	0.00	0.00	0	0	0	0	0	0
PIMA	0	0	0	0.00	0.00	0	0	0	0	0	0
SANTA CRUZ	0	0	0	0.00	0.00	0	0	0	0	0	0

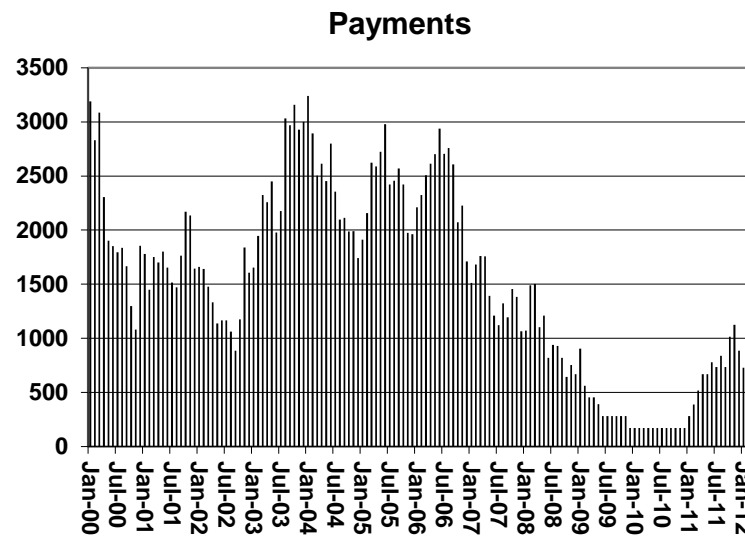
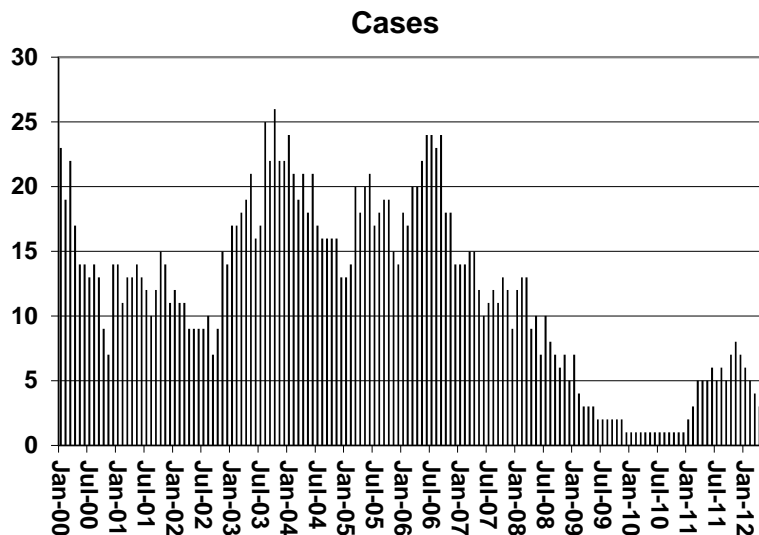
1/EXCLUDES: PRIOR MONTH NET TOTALS OF : 0 CASES; 0 RECIPIENTS; \$0.

CHART 4

TUBERCULOSIS CONTROL PROGRAM

COMPARISON OF CASES, PAYMENTS & AVERAGE PAYMENTS

FOR 2000, 2001, 2002, 2003, 2004, 2005, 2006, 2007, 2008, 2009, 2010, 2011, & 2012



Average Payment Per Case

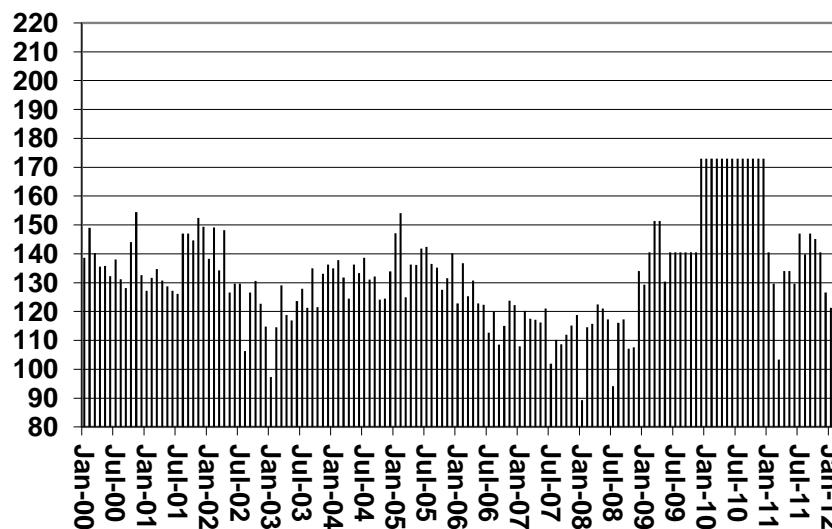


TABLE 6

SUPPLEMENTAL NUTRITION ASSISTANCE PROGRAM: ARIZONA 1/

CHANGE FROM

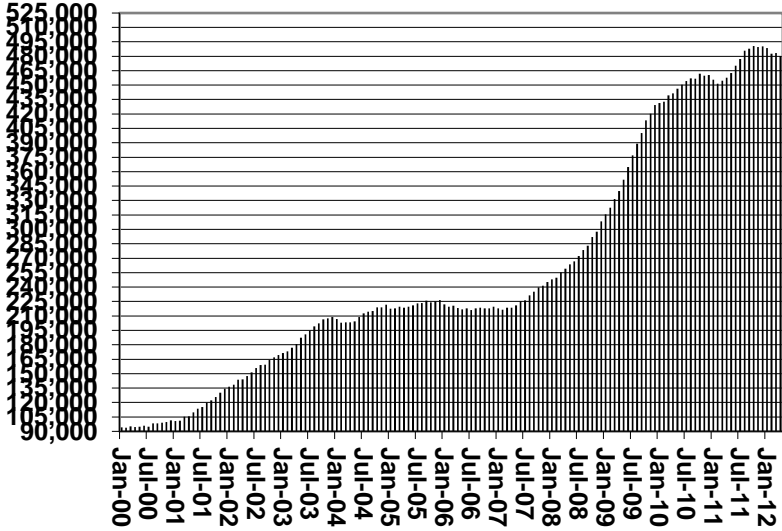
	APRIL 2012							MARCH 2012			APRIL 2011		
	HOUSEHOLDS	PERSONS	ADULTS	CHILDREN	TOTAL PAYMENTS ISSUANCE	AVERAGE PAYMT./ HOUSEHOLD	AVERAGE PAYMT./ PERSON	HOUSEHOLDS	PERSONS	TOTAL PAYMENTS ISSUANCE	HOUSEHOLDS	PERSONS	TOTAL PAYMENTS ISSUANCE
ARIZONA	480,166	1,112,064	569,787	542,277	139,578,301	290.69	125.51	(3,229)	(6,183)	(692,286)	22,495	64,976	6,903,740
REGION													
MARICOPA	258,215	604,468	288,144	316,324	76,819,801	297.50	127.09	(1,433)	(2,842)	(392,250)	13,832	40,180	4,858,242
NORTHERN	56,598	135,474	76,886	58,588	16,867,832	298.03	124.51	(278)	(677)	(44,034)	3,719	8,098	959,000
APACHE	10,761	28,974	15,992	12,982	3,595,716	334.14	124.10	(4)	(27)	21,005	765	1,684	219,427
COCONINO	10,309	24,936	13,467	11,469	3,127,855	303.41	125.44	(89)	(183)	(15,267)	877	1,704	248,603
MOHAVE	21,447	45,418	27,408	18,010	5,661,435	263.97	124.65	(56)	(204)	(16,238)	1,081	2,374	219,115
NAVAJO	14,081	36,146	20,019	16,127	4,482,826	318.36	124.02	(129)	(263)	(33,534)	996	2,336	271,855
CENTRAL	63,652	150,884	81,960	68,924	18,225,115	286.32	120.79	(197)	(134)	105,088	3,663	11,047	966,909
GILA	6,217	13,663	7,934	5,729	1,762,157	283.44	128.97	(49)	(105)	(5,312)	100	441	32,604
LA PAZ	2,056	4,248	2,448	1,800	543,034	264.12	127.83	(22)	13	2,441	38	154	14,624
PINAL	23,271	58,071	29,989	28,082	7,224,948	310.47	124.42	(114)	(388)	(17,496)	1,275	4,195	411,453
YAVAPAI	15,930	32,276	19,403	12,873	3,958,460	248.49	122.64	(104)	(70)	(2,289)	1,035	2,265	227,541
YUMA	16,178	42,626	22,186	20,440	4,736,516	292.78	111.12	92	416	127,744	1,215	3,992	280,687
SOUTHERN	101,701	221,238	122,797	98,441	27,665,553	272.03	125.05	(1,321)	(2,530)	(361,090)	1,281	5,651	119,589
COCHISE	11,009	24,038	13,773	10,265	2,896,514	263.10	120.50	(123)	(228)	(21,840)	317	1,150	60,181
GRAHAM	3,470	8,038	4,432	3,606	985,170	283.91	122.56	(53)	(55)	(7,373)	(5)	77	(34,406)
GREENLEE	529	1,144	661	483	145,869	275.74	127.51	(17)	(56)	(9,390)	22	46	5,634
PIMA	82,087	175,735	97,615	78,120	22,218,043	270.66	126.43	(1,076)	(2,064)	(314,215)	750	3,886	63,240
SANTA CRUZ	4,606	12,283	6,316	5,967	1,419,957	308.28	115.60	(52)	(127)	(8,272)	197	492	24,940

1/EXCLUDES: PRIOR MONTH NET TOTALS OF : 7,582 CASES; 20,978 RECIPIENTS; \$1,277,797.
 AGED CANCELATIONS: 11,420 CASES; 14,622 RECIPIENTS; \$543,180.
 SNAP CONVERSIONS: 0 CASES; 0 RECIPIENTS; \$0.
 SNAP CHILD ONLY: 60,447 CASES; 168,690 RECIPIENTS; \$21,046,178.
 SNAP ZERO PAY: 5,271 CASES; 20,152 RECIPIENTS.

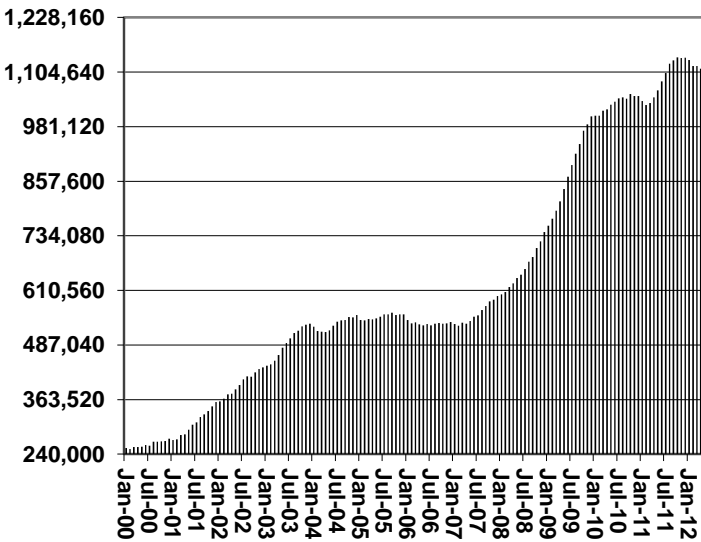
CHART 6

SUPPLEMENTAL NUTRITION ASSISTANCE PROGRAM (SNAP) COMPARISON OF HOUSEHOLDS, RECIPIENTS, PAYMENTS & AVERAGE PAYMENTS FOR 2000, 2001, 2002, 2003, 2004, 2005, 2006, 2007, 2008, 2009, 2010, 2011, & 2012

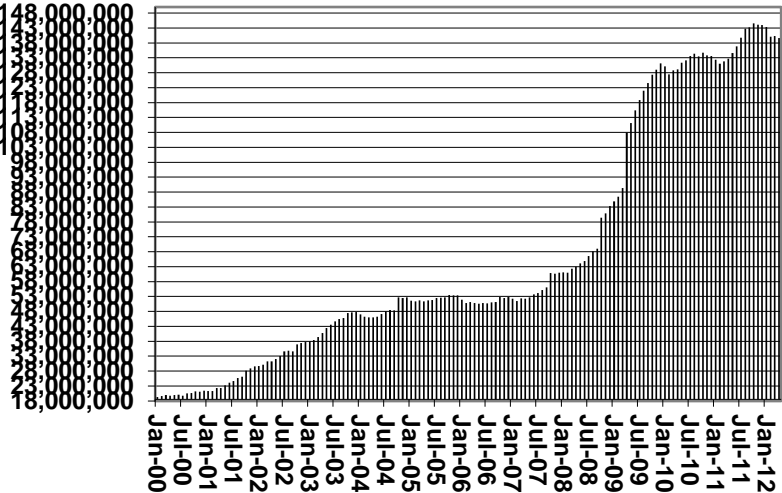
Households



Recipients



Payments



Average Payment Per Household

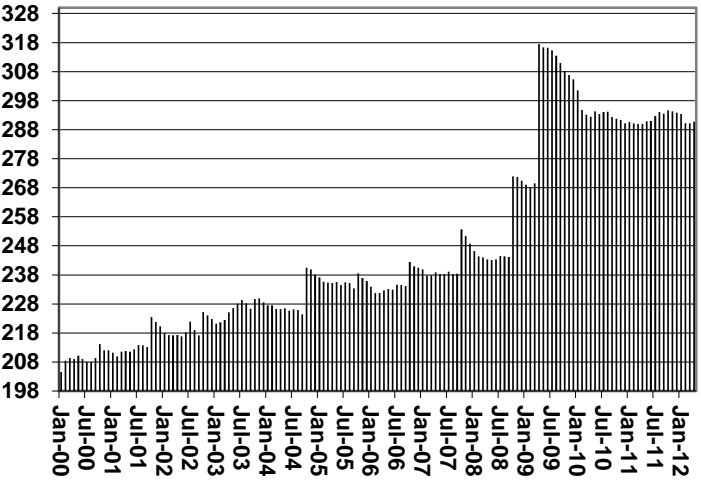


TABLE 7A
MEDICAL ASSISTANCE PROGRAM
RECIPIENTS
APRIL 2012

	SOBRA WOMAN 133% FPL	SOBRA CHILD	ADULT W/O CHILD 100% FPL	FOSTER CARE	1931 36% FPL	FEDERAL EMERGENCY SERVICES	INFANTS	ADULT W/O CHILD 40% FPL	MEDICAL W/SPEND DOWN	SOBRA WOMAN 100% FPL	SOBRA CHILD 100% FPL	TRANSITIONAL MEDICAL T1 - T4	1931 100% FPL	YATI	OTHER	TOTAL CASES
ARIZONA	11,888	51,374	32,189	14,441	371,026	63,221	45,627	98,537	0	4,427	241,849	50,223	122,403	348	28,730	1,136,283
REGION																
MARICOPA	6,804	29,710	15,825	8,100	208,951	51,371	27,655	48,937	0	2,444	145,060	25,970	64,079	185	15,004	650,095
NORTHERN	1,237	4,960	3,730	695	47,891	1,133	4,495	15,676	0	514	23,416	5,158	14,585	26	2,973	126,489
APACHE	198	996	526	41	12,262	77	872	3,865	0	73	4,143	975	2,557	1	384	26,970
COCONINO	287	936	669	127	8,971	460	1,019	2,566	0	124	4,815	1,097	2,902	13	430	24,416
MOHAVE	428	1,597	1,656	356	12,770	372	1,387	4,778	0	180	8,724	1,821	5,345	9	1,621	41,044
NAVAJO	324	1,431	879	171	13,888	224	1,217	4,467	0	137	5,734	1,265	3,781	3	538	34,059
CENTRAL	1,766	7,068	4,686	1,645	47,159	3,870	5,818	12,852	0	711	29,998	9,029	18,103	42	4,409	147,156
GILA	120	451	405	108	4,871	110	473	1,634	0	53	1,973	504	1,329	3	341	12,375
LA PAZ	39	181	156	27	1,432	113	139	461	0	15	687	110	366	1	166	3,893
PINAL	615	3,061	1,340	637	20,769	1,268	2,193	4,961	0	262	11,338	2,458	6,333	15	1,368	56,618
YAVAPAI	433	1,440	1,436	562	8,428	1,193	1,083	2,867	0	135	6,466	1,535	3,982	20	1,181	30,761
YUMA	559	1,935	1,349	311	11,659	1,186	1,930	2,929	0	246	9,534	4,422	6,093	3	1,353	43,509
SOUTHERN	2,081	9,636	7,948	4,001	67,025	6,847	7,659	21,072	0	758	43,375	10,066	25,636	95	6,344	212,543
COCHISE	202	895	983	255	7,186	409	764	1,996	0	75	4,459	962	2,834	4	862	21,886
GRAHAM	95	326	259	82	2,821	26	345	828	0	23	1,395	437	876	1	165	7,679
GREENLEE	14	40	40	10	479	4	59	142	0	6	188	46	97	1	32	1,158
PIMA	1,668	7,893	6,156	3,619	53,007	6,003	6,093	17,205	0	606	34,293	7,795	19,904	89	4,824	169,155
SANTA CRUZ	102	482	510	35	3,532	405	398	901	0	48	3,040	826	1,925	0	461	12,665

TABLE 7B
MEDICAL ASSISTANCE PROGRAM
RECIPIENTS

CHANGE FROM

MARCH 2012

	SOBRA WOMAN 133% FPL	SOBRA CHILD	ADULT W/O CHILD 100% FPL	FOSTER CARE	1931 36% FPL	FEDERAL EMERGENCY SERVICES	ADULT W/O CHILD 40% FPL	MEDICAL W/SPEND DOWN	SOBRA WOMAN 100% FPL	SOBRA CHILD 100% FPL	TRANSITIONAL MEDICAL T1 - T4	1931 100% FPL	YATI	OTHER	TOTAL CASES	
ARIZONA	237	(1,140)	(2,166)	188	604	774	(252)	(5,360)	0	215	945	(754)	(53)	2	(47)	(6,807)
REGION																
MARICOPA	162	(635)	(1,068)	119	467	777	(63)	(2,882)	0	119	825	(251)	(116)	2	(26)	(2,570)
NORTHERN	(8)	(161)	(286)	(5)	2	23	(52)	(671)	0	34	208	(139)	116	1	(1)	(939)
APACHE	4	(20)	(41)	0	(50)	4	1	(158)	0	2	115	(46)	63	1	(3)	(128)
COCONINO	15	(41)	(72)	(1)	27	4	(37)	(118)	0	10	(1)	10	(8)	(2)	(4)	(218)
MOHAVE	(17)	(27)	(101)	(1)	130	10	(12)	(212)	0	17	47	(66)	57	1	8	(166)
NAVAJO	(10)	(73)	(72)	(3)	(105)	5	(4)	(183)	0	5	47	(37)	4	1	(2)	(427)
CENTRAL	9	(184)	(349)	31	259	88	(27)	(677)	0	52	21	(264)	53	(1)	19	(970)
GILA	1	(6)	(20)	2	27	6	9	(72)	0	4	(24)	8	(11)	0	(3)	(79)
LA PAZ	(6)	5	(2)	(2)	40	2	5	(27)	0	4	(11)	(7)	2	0	4	7
PINAL	20	(72)	(91)	21	(38)	(12)	(23)	(314)	0	19	2	8	(33)	0	16	(497)
YAVAPAI	(6)	(70)	(95)	8	(13)	12	(29)	(161)	0	10	41	(100)	32	(2)	(13)	(386)
YUMA	0	(41)	(141)	2	243	80	11	(103)	0	15	13	(173)	63	1	15	(15)
SOUTHERN	74	(160)	(463)	43	(124)	(114)	(110)	(1,130)	0	10	(109)	(100)	(106)	0	(39)	(2,328)
COCHISE	(3)	(26)	(52)	(5)	(70)	(14)	(8)	(69)	0	8	48	(32)	43	0	(14)	(194)
GRAHAM	3	(4)	(15)	(3)	37	4	(9)	(58)	0	(8)	3	13	(14)	0	0	(51)
GREENLEE	1	0	0	0	(21)	0	2	(9)	0	1	(7)	14	(3)	0	4	(18)
PIMA	74	(116)	(348)	51	(117)	(99)	(95)	(955)	0	11	(106)	(130)	(146)	0	(33)	(2,009)
SANTA CRUZ	(1)	(14)	(48)	0	47	(5)	0	(39)	0	(2)	(47)	35	14	0	4	(56)

TABLE 7C
MEDICAL ASSISTANCE PROGRAM
RECIPIENTS

CHANGE FROM

APRIL 2011

	SOBRA WOMAN 133% FPL	SOBRA CHILD	ADULT W/O CHILD 100% FPL	FOSTER CARE	1931 36% FPL	FEDERAL EMERGENCY SERVICES	INFANTS	ADULT W/O CHILD 40% FPL	MEDICAL W/SPEND DOWN	SOBRA WOMAN 100% FPL	SOBRA CHILD 100% FPL	TRANSITIONAL MEDICAL T1 - T4	3E 1931 100% FPL	YATI	OTHER	TOTAL CASES
ARIZONA	977	(17,773)	(32,183)	1,734	33,828	13,242	130	(75,414)	(7,392)	423	8,117	5,138	(3,322)	25	(413)	(72,883)
REGION																
MARICOPA	935	(10,146)	(15,995)	1,251	21,070	12,475	636	(39,613)	(4,004)	335	7,386	4,127	(1,475)	9	(77)	(23,086)
NORTHERN	(28)	(2,441)	(4,074)	40	3,999	58	(124)	(10,191)	(1,028)	(60)	(52)	276	(398)	10	(88)	(14,101)
APACHE	(3)	(446)	(610)	6	854	(5)	(21)	(2,042)	(191)	(38)	(19)	118	(120)	1	(40)	(2,556)
COCONINO	(28)	(531)	(986)	(2)	515	45	(52)	(2,120)	(155)	6	(25)	33	(155)	1	14	(3,440)
MOHAVE	33	(615)	(1,493)	11	1,162	(1)	(16)	(3,393)	(473)	(23)	171	67	(24)	6	(19)	(4,607)
NAVAJO	(30)	(849)	(985)	25	1,468	19	(35)	(2,636)	(209)	(5)	(179)	58	(99)	2	(43)	(3,498)
CENTRAL	52	(2,108)	(4,986)	135	4,582	193	(159)	(9,323)	(1,046)	140	637	627	(439)	5	(33)	(11,723)
GILA	5	(228)	(381)	8	252	(17)	(27)	(1,019)	(108)	19	1	56	(26)	1	(41)	(1,505)
LA PAZ	9	(82)	(109)	8	173	(29)	(6)	(378)	(17)	5	(15)	(26)	(50)	1	5	(511)
PINAL	10	(1,075)	(1,644)	43	2,300	76	(89)	(3,774)	(306)	66	345	261	(144)	(1)	12	(3,920)
YAVAPAI	16	(206)	(1,349)	66	960	38	(64)	(2,346)	(327)	15	138	(122)	(176)	3	(51)	(3,405)
YUMA	12	(517)	(1,503)	10	897	125	27	(1,806)	(288)	35	168	458	(43)	1	42	(2,382)
SOUTHERN	18	(3,078)	(7,128)	308	4,177	516	(223)	(16,287)	(1,314)	8	146	108	(1,010)	1	(215)	(23,973)
COCHISE	(29)	(358)	(931)	10	371	(11)	(31)	(1,367)	(176)	(22)	(5)	36	(31)	1	(40)	(2,583)
GRAHAM	(24)	(113)	(207)	15	83	8	6	(659)	(73)	(2)	(24)	52	(18)	(1)	(9)	(966)
GREENLEE	6	(16)	(23)	2	42	2	9	(97)	(11)	0	(61)	7	(9)	(1)	(3)	(153)
PIMA	67	(2,447)	(5,562)	279	3,536	535	(163)	(13,875)	(1,004)	29	293	(117)	(902)	3	(150)	(19,478)
SANTA CRUZ	(2)	(144)	(405)	2	145	(18)	(44)	(289)	(50)	3	(57)	130	(50)	(1)	(13)	(793)

CHART 7

MEDICAL ASSISTANCE PROGRAM

COMPARISON OF RECIPIENTS

FOR 2000, 2001, 2002, 2003, 2004, 2005, 2006, 2007, 2008, 2009, 2010, 2011, & 2012

Total Recipients

