



DEPARTMENT OF ECONOMIC SECURITY

Your Partner For A Stronger Arizona

State of Arizona

Department of Economic Security

Family Assistance Administration

Statistical Bulletin

June, 2012

Phone: (602) 542-3678

<http://www.azdes.gov/appreports.aspx>

**** STATISTICAL BULLETIN ****
ARIZONA DEPARTMENT OF ECONOMIC SECURITY
FAMILY ASSISTANCE ADMINISTRATION
BOX 6123, PHOENIX, ARIZONA 85005
PHONE (602) 542-3678

JUNE 2012

THIS ISSUE OF THE STATISTICAL BULLETIN COMPARES JUNE 2012 DATA FOR EACH OF THE INDICATED PROGRAMS WITH THE INFORMATION FOR MAY 2012 AND JUNE 2011. STATEWIDE SUMMARIES OF ACTIVITY WITHIN EACH OF THE SPECIFIC PROGRAMS FOR THIS REPORT PERIOD ARE DISCUSSED BELOW. THE TABLES COMPARE CURRENT AND PRIOR MONTH DATA. DISTRICT AND COUNTY COMPARISONS ARE PROVIDED WITHIN THIS BULLETIN

TANF SUMMARY

COMPARING TO MAY 2012, JUNE 2012 CASES INCREASED BY 147 (0.85%) TO 17,484. RECIPIENTS INCREASED BY 293 (0.74%) TO 39,866. PAYMENTS INCREASED BY \$18,038 (0.50%) TO \$3,644,568. AVERAGE PAYMENT PER CASE DECREASED BY \$0.73 (0.35%) TO \$0.00. PAYMENT PER RECIPIENT DECREASED BY \$0.22 (0.24%) TO \$91.42.

COMPARING TO JUNE 2011, JUNE 2012 CASES DECREASED BY 664 (3.66%). RECIPIENTS DECREASED BY 1,270 (3.09%). TOTAL PAYMENTS DECREASED BY \$173,618 (4.55%). THE AVERAGE PAYMENT PER CASE DECREASED BY \$1.94 (0.92%). THE AVERAGE PAYMENT PER RECIPIENT DECREASED BY \$1.40 (1.51%).

CASH ASSISTANCE (CA)

COMPARING TO MAY 2012, JUNE 2012 CASES INCREASED BY 123 (0.77%) TO 16,189. RECIPIENTS INCREASED BY 296 (0.82%) TO 36,225. PAYMENTS INCREASED BY \$25,775 (0.76%) TO \$3,431,353. AVERAGE PAYMENT PER CASE DECREASED BY \$0.01 (0.00%) TO \$211.96. PAYMENT PER RECIPIENT DECREASED BY \$0.07 (0.07%) TO \$94.72.

COMPARING TO JUNE 2011, JUNE 2012 CASES DECREASED BY 832 (4.89%). RECIPIENTS DECREASED BY 1,732 (4.56%). TOTAL PAYMENTS DECREASED BY \$201,467 (5.55%). THE AVERAGE PAYMENT PER CASE DECREASED BY \$1.47 (0.69%). THE AVERAGE PAYMENT PER RECIPIENT DECREASED BY \$0.99 (1.03%).

CASH ASSISTANCE UNEMPLOYED PARENT PROGRAM (CA-UP)

COMPARING TO MAY 2012, JUNE 2012 CASES DECREASED BY 20 (3.50%) TO 552. RECIPIENTS DECREASED BY 46 (2.13%) TO 2,109. PAYMENTS DECREASED BY \$5,718 (3.46%) TO \$159,637. AVERAGE PAYMENT PER CASE INCREASED BY \$0.12 (0.04%) TO \$289.20. PAYMENT PER RECIPIENT DECREASED BY \$1.04 (1.36%) TO \$75.69.

COMPARING TO JUNE 2011, JUNE 2012 CASES INCREASED BY 70 (14.52%). RECIPIENTS INCREASED BY 282 (15.44%). TOTAL PAYMENTS INCREASED BY \$20,732 (14.93%). THE AVERAGE PAYMENT PER CASE INCREASED BY \$1.02 (0.35%). THE AVERAGE PAYMENT PER RECIPIENT DECREASED BY \$0.34 (0.45%).

CASH ASSISTANCE WITH GRANT UNDER \$100 (CA-MOE)

COMPARING TO MAY 2012, JUNE 2012 CASES INCREASED BY 47 (6.86%) TO 732. RECIPIENTS INCREASED BY 50 (3.48%) TO 1,488. PAYMENTS DECREASED BY \$1,786 (3.26%) TO \$52,931. AVERAGE PAYMENT PER CASE DECREASED BY \$7.57 (9.48%) TO \$72.31. AVERAGE PAYMENT PER RECIPIENT DECREASED BY \$2.48 (6.52%) TO \$35.57.

COMPARING TO JUNE 2011, JUNE 2012 CASES INCREASED BY 94 (14.73%). RECIPIENTS INCREASED BY 159 (11.96%). TOTAL PAYMENTS INCREASED BY \$6,976 (15.18%). THE AVERAGE PAYMENT PER CASE INCREASED BY \$0.28 (0.39%). THE AVERAGE PAYMENT PER RECIPIENT INCREASED BY \$0.99 (2.86%).

CASH ASSISTANCE UNEMPLOYED PARENT PROGRAM WITH GRANT UNDER \$100 (CA-UP-MOE) NEW PROGRAM STARTING 7/01

COMPARING TO MAY 2012, JUNE 2012 CASES DECREASED BY 3 (21.43%) TO 11. RECIPIENTS DECREASED BY 7 (13.73%) TO 44. PAYMENTS DECREASED BY \$233 (26.48%) TO \$647. AVERAGE PAYMENT PER CASE DECREASED BY \$4.04 (6.43%) TO \$58.82. PAYMENT PER RECIPIENT DECREASED BY \$2.55 (14.78%) TO \$14.70.

COMPARING TO JUNE 2011, JUNE 2012 CASES INCREASED BY 4 (57.14%). RECIPIENTS INCREASED BY 21 (2.39%). TOTAL PAYMENTS INCREASED BY \$141 (27.87%). THE AVERAGE PAYMENT PER CASE DECREASED BY \$13.47 (18.63%). THE AVERAGE PAYMENT PER RECIPIENT DECREASED BY \$7.30 (33.18%).

TUBERCULOSIS CONTROL PROGRAM (TC)

COMPARING TO MAY 2012, JUNE 2012 CASES INCREASED BY 0 (0.00%) TO 3. RECIPIENTS INCREASED BY 0 (0.00%) TO 3. PAYMENTS INCREASED BY \$0 (0.00%) TO \$404. AVERAGE PAYMENT PER CASE INCREASED BY \$73.78 (54.79%) TO \$208.45. AVERAGE PAYMENT PER RECIPIENT INCREASED BY \$0.00 (0.00%) TO \$134.67.

COMPARING TO JUNE 2011, JUNE 2012 CASES DECREASED BY 3 (50.00%). RECIPIENTS DECREASED BY 3 (50.00%). TOTAL PAYMENTS DECREASED BY \$374 (48.07%). THE AVERAGE PAYMENT PER CASE INCREASED BY \$78.78 (60.76%). THE AVERAGE PAYMENT PER RECIPIENT INCREASED BY \$5.00 (3.86%).

SUPPLEMENTAL NUTRITION ASSISTANCE PROGRAM (SNAP)

COMPARING TO MAY 2012, JUNE 2012 SUPPLEMENTAL NUTRITION ASSISTANCE HOUSEHOLDS INCREASED BY 1,858 (0.39%) TO 481,901. PERSONS RECEIVING SUPPLEMENTAL NUTRITION ASSISTANCE INCREASED BY 5,650 (0.51%) TO 1,116,483. TOTAL COUPON ISSUANCE INCREASED BY \$730,559 (0.52%) TO \$140,161,083. THE AVERAGE HOUSEHOLD ALLOTMENT INCREASED BY \$0.40 (0.14%) TO \$290.85. THE AVERAGE ALLOTMENT PER PERSON INCREASED BY \$0.02 (0.02%) TO \$125.54.

COMPARING TO JUNE 2011, JUNE 2012 SUPPLEMENTAL NUTRITION ASSISTANCE HOUSEHOLDS INCREASED BY 11,841 (2.52%). PERSONS RECEIVING SUPPLEMENTAL NUTRITION ASSISTANCE INCREASED BY 33,032 (3.05%). TOTAL COUPON ISSUANCE INCREASED BY \$3,367,772 (2.46%). THE AVERAGE ALLOTMENT PER HOUSEHOLD DECREASED BY \$0.16 (0.06%). THE AVERAGE ALLOTMENT PER PERSON DECREASED BY \$0.72 (0.57%).

MEDICAL ASSISTANCE PROGRAM (MA) NEW TABLE INCLUDES PROP. 204 CATEGORIES

COMPARING TO MAY 2012, JUNE 2012 TOTAL RECIPIENTS TOTAL RECIPIENTS DECREASED BY 5,279 (0.47%). SOBRA WOMEN AT 140% FPL INCREASED BY 220 (1.83%). SOBRA CHILDREN INCREASED BY 5,287 (10.50%). ADULTS W/O CHILD AT 100% DECREASED BY 2,022 (6.73%). FOSTER CARE INCREASED BY 179 (0.00%). 1931 AT 36% FPL DECREASED BY 1,752 (0.00%). EMERGENCY SERVICES INCREASED BY 874 (1.36%). INFANTS INCREASED BY 95 (0.21%). ADULT W/O CHILD AT 140% DECREASED BY 4,859 (5.21%). MEDICAL W/SPEND DOWN INCREASED BY 0 (100.00%). SOBRA WOMAN AT 100% INCREASED BY 37 (0.81%). SOBRA CHILD AT 100% DECREASED BY 807 (0.33%). TRANSITIONAL MEDICAL DECREASED BY 1,605 (3.30%). 1931 AT 100% DECREASED BY 801 (0.65%). YATI INCREASED BY 10 (2.87%). ALL OTHER CATEGORIES DECREASED BY 135 (0.47%).

COMPARING TO JUNE 2011, JUNE 2012 TOTAL RECIPIENTS TOTAL RECIPIENTS DECREASED BY 97,500 (7.98%). SOBRA WOMEN AT 140% FPL INCREASED BY 1,310 (11.97%). SOBRA CHILDREN DECREASED BY 15,729 (22.05%). ADULTS W/O CHILD AT 100% DECREASED BY 36,963 (56.88%). FOSTER CARE INCREASED BY 1,739 (13.39%). 1931 AT 36% FPL INCREASED BY 25,473 (7.42%). EMERGENCY SERVICES INCREASED BY 13,839 (26.86%). INFANTS INCREASED BY 355 (0.78%). ADULT W/O CHILD AT 140% DECREASED BY 87,723 (49.80%). MEDICAL W/SPEND DOWN DECREASED BY 5,157 (100.00%). SOBRA WOMAN AT 100% INCREASED BY 471 (11.43%). SOBRA CHILD AT 100% INCREASED BY 6,134 (2.60%). TRANSITIONAL MEDICAL INCREASED BY 4,344 (10.18%). 1931 AT 100% DECREASED BY 4,398 (3.48%). YATI INCREASED BY 26 (7.83%). ALL OTHER CATEGORIES DECREASED BY 1,221 (4.13%).

TANF SUMMARY

TABLES 1, 1A, 1B, & 1C: ARIZONA 1/

	JUNE 2012							CHANGE FROM			MAY 2012			JUNE 2011		
	FAMILIES (CASES)	PERSONS (RECIP.)	ADULTS	CHILDREN	TOTAL PAYMENTS	AVERAGE PAYMENT/ CASE	AVERAGE PAYMENT/ RECIP.	FAMILIES (CASES)	PERSONS (RECIP.)	TOTAL PAYMENTS	FAMILIES (CASES)	PERSONS (RECIP.)	TOTAL PAYMENTS			
ARIZONA	17,484	39,866	11,035	28,831	3,644,568	208.45	91.42	147	293	18,038	(664)	(1,270)	(173,618)			
REGION																
MARICOPA	11,078	25,903	7,079	18,824	2,308,153	208.35	89.11	141	357	19,169	(85)	(14)	(49,653)			
NORTHERN	976	2,142	636	1,506	199,148	204.05	92.97	(32)	(96)	(7,232)	(71)	(220)	(14,666)			
APACHE	38	96	26	70	8,414	221.42	87.65	(5)	(14)	(1,297)	(3)	4	(39)			
COCONINO	82	202	62	140	16,663	203.21	82.49	(1)	1	334	20	47	2,576			
MOHAVE	604	1,286	382	904	122,288	202.46	95.09	(7)	(22)	(2,511)	(25)	(83)	(4,816)			
NAVAJO	252	558	166	392	51,783	205.49	92.80	(19)	(61)	(3,758)	(63)	(188)	(12,387)			
CENTRAL	2,005	4,359	1,246	3,113	417,090	208.02	95.68	(8)	(73)	(2,040)	37	142	5,048			
GILA	394	803	292	511	92,252	234.14	114.88	13	17	3,126	(16)	(67)	(6,797)			
LA PAZ	52	118	28	90	10,388	199.77	88.03	(1)	(1)	(76)	(14)	(20)	(2,678)			
PINAL	847	1,856	505	1,351	168,363	198.78	90.71	(28)	(97)	(7,201)	38	132	7,597			
YAVAPAI	306	635	161	474	60,082	196.35	94.62	6	6	920	38	106	9,204			
YUMA	406	947	260	687	86,005	211.83	90.82	2	2	1,191	(9)	(9)	(2,278)			
SOUTHERN	3,425	7,462	2,074	5,388	720,177	210.27	96.51	46	105	8,141	(545)	(1,178)	(114,347)			
COCHISE	359	717	170	547	72,844	202.91	101.60	(2)	(8)	(793)	24	56	3,951			
GRAHAM	217	468	151	317	51,468	237.18	109.97	5	3	823	(11)	3	(734)			
GREENLEE	17	41	13	28	3,825	225.00	93.29	(1)	(1)	271	1	2	271			
PIMA	2,720	5,975	1,678	4,297	568,103	208.86	95.08	43	94	7,162	(575)	(1,295)	(122,115)			
SANTA CRUZ	112	261	62	199	23,937	213.72	91.71	1	17	678	16	56	4,280			

1/EXCLUDES: PRIOR MONTH NET TOTALS OF 886 CASES; 2,277 RECIPIENTS; \$132,856.
 GRANT DIVERSION TOTALS OF: 642 CASES; \$525,139.
 ZERO PAY TOTALS OF 1,221 CASES; 3,793 RECIPIENTS.
 RRP: 159 CASES; 250 RECIPIENTS; \$34,522.

1/INCLUDES: TANF CHILD ONLY: 8,977 CASES; 15,256 RECIPIENTS; \$1,763,912.

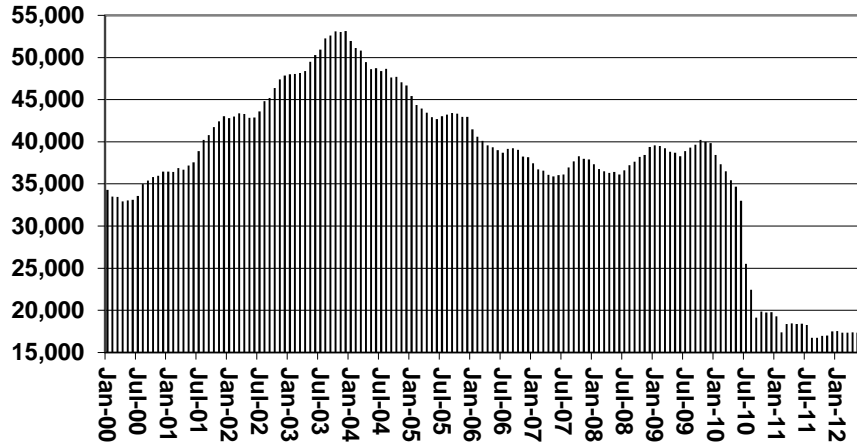
	CURRENT MO. CASES	CURRENT MO. RECIP.	CURRENT MO. DOLLARS	PRIOR MO. CASES	PRIOR MO. RECIP.	PRIOR MO. DOLLARS
PASQUAYYAQUI	233	658	\$71,375	13	45	\$4,258
WM APACHE	0	0	\$0	0	0	\$0
SALT RIVER	70	235	\$21,174	5	16	\$639
SAN CARLOS	420	873	\$103,026	20	47	\$2,314
HOPI	82	206	\$18,398	2	7	\$157
TOTAL	805	1,972	\$213,973	40	115	\$7,368

TANF SUMMARY

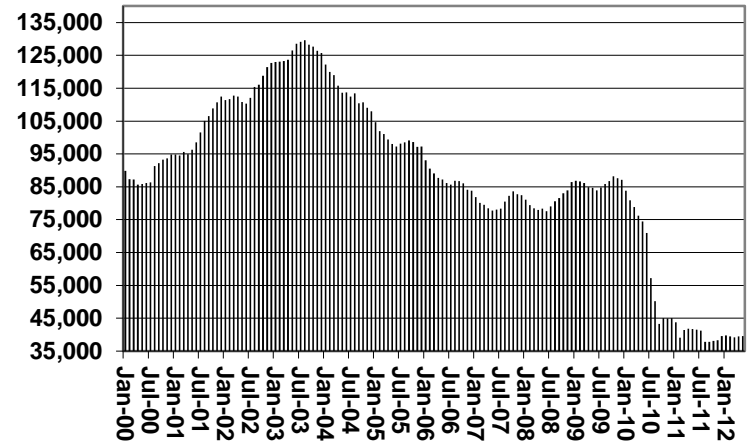
TABLES 1, 1A, 1B, & 1C

COMPARISON OF CASES, RECIPIENTS, PAYMENTS & AVERAGE PAYMENTS
FOR 2000, 2001, 2002, 2003, 2004, 2005, 2006, 2007, 2008, 2009, 2010, 2011, & 2012

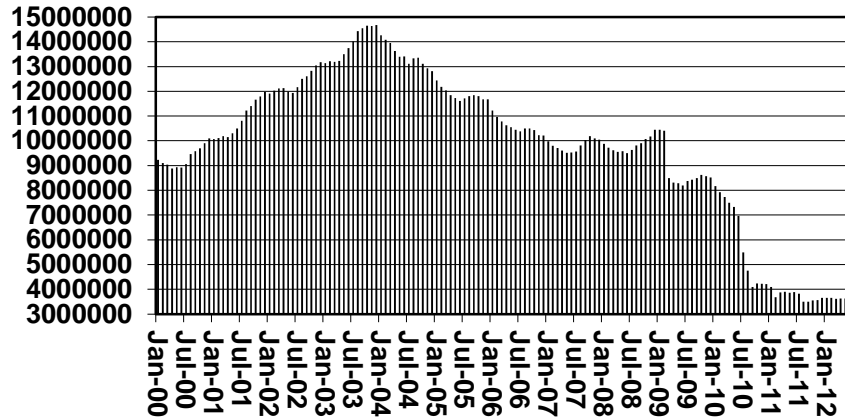
Cases



Recipients



Payments



Average Payments Per Recipient

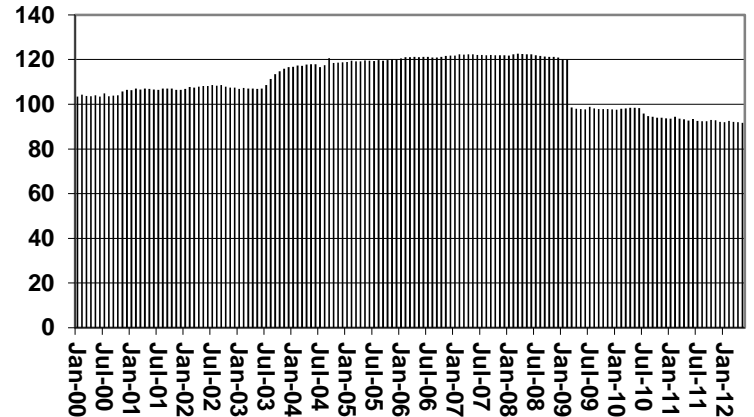


TABLE 1
CASH ASSISTANCE: ARIZONA 1/

	JUNE 2012							CHANGE FROM			MAY 2012			JUNE 2011		
	FAMILIES	(RECIP.)	ADULTS	CHILDREN	TOTAL	AVERAGE	AVERAGE	FAMILIES	PERSONS	TOTAL	FAMILIES	PERSONS	TOTAL	FAMILIES	PERSONS	TOTAL
	(CASES)				PAYMENTS	PAYMENT/ CASE	PAYMENT/ RECIP.	(CASES)	(RECIP.)	PAYMENTS	(CASES)	(RECIP.)	PAYMENTS	(CASES)	(RECIP.)	PAYMENTS
ARIZONA	16,189	36,225	9,608	26,617	3,431,353	211.96	94.72	123	296	25,775	(832)	(1,732)	(201,467)			
REGION																
MARICOPA	10,271	23,664	6,257	17,407	2,184,558	212.69	92.32	126	393	29,639	(210)	(322)	(60,230)			
NORTHERN	902	1,925	540	1,385	185,121	205.23	96.17	(26)	(80)	(6,679)	(62)	(208)	(14,916)			
APACHE	33	81	18	63	7,123	215.85	87.94	(3)	(7)	(684)	(3)	10	274			
COCONINO	69	166	49	117	14,789	214.33	89.09	(4)	(6)	(261)	10	18	1,135			
MOHAVE	560	1,157	321	836	113,647	202.94	98.23	(5)	(17)	(2,839)	(13)	(64)	(4,369)			
NAVAJO	240	521	152	369	49,562	206.51	95.13	(14)	(50)	(2,895)	(56)	(172)	(11,956)			
CENTRAL	1,846	3,894	1,037	2,857	386,247	209.23	99.19	(12)	(88)	(5,084)	(53)	(146)	(17,602)			
GILA	355	687	226	461	81,713	230.18	118.94	7	(2)	1,043	(53)	(179)	(17,184)			
LA PAZ	48	104	23	81	9,543	198.81	91.76	(2)	(8)	(755)	(14)	(24)	(2,916)			
PINAL	774	1,644	415	1,229	156,071	201.64	94.93	(17)	(78)	(5,372)	14	57	2,498			
YAVAPAI	284	583	143	440	57,044	200.86	97.85	4	10	889	39	116	9,556			
YUMA	385	876	230	646	81,876	212.66	93.47	10	17	1,090	(11)	(20)	(3,281)			
SOUTHERN	3,170	6,742	1,774	4,968	675,427	213.07	100.18	21	44	5,920	(535)	(1,152)	(114,994)			
COCHISE	337	673	155	518	70,555	209.36	104.84	(11)	(25)	(1,267)	13	32	2,875			
GRAHAM	201	418	128	290	47,455	236.09	113.53	3	2	1,348	(24)	(38)	(4,031)			
GREENLEE	15	36	10	26	3,599	239.93	99.97	0	2	353	(1)	(3)	45			
PIMA	2,513	5,378	1,426	3,952	531,409	211.46	98.81	28	59	5,290	(535)	(1,187)	(117,140)			
SANTA CRUZ	104	237	55	182	22,409	215.47	94.55	1	6	196	12	44	3,257			

1/EXCLUDES: PRIOR MONTH NET TOTALS OF: 383 CASES; 999 RECIPIENTS; \$93,593.
GRANT DIVERSION TOTALS OF: 642 CASES; \$525,139.
ZERO PAY TOTALS OF 1,213 CASES; 3,756 RECIPIENTS.

CASES WITH GRANT UNDER \$100 (SEE TABLE 1B).

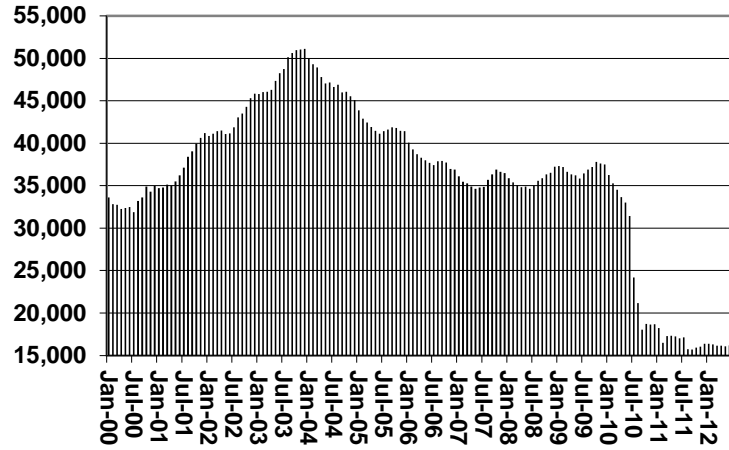
	CURRENT	CURRENT	CURRENT MO.	PRIOR MO.	PRIOR	PRIOR
	MO. CASES	MO. RECIP.	DOLLARS	CASES	MO. RECIP.	MO. DOLLARS
PASQUAYYAQUI	225	622	\$68,113	11	38	\$3,691
WM APACHE	0	0	\$0	0	0	\$0
SALT RIVER	70	235	\$21,174	5	16	\$639
SAN CARLOS	383	753	\$91,875	17	37	\$1,802
HOPI	82	206	\$18,398	2	7	\$157
TOTAL	760	1,816	\$199,560	35	98	\$6,289

CHART 1

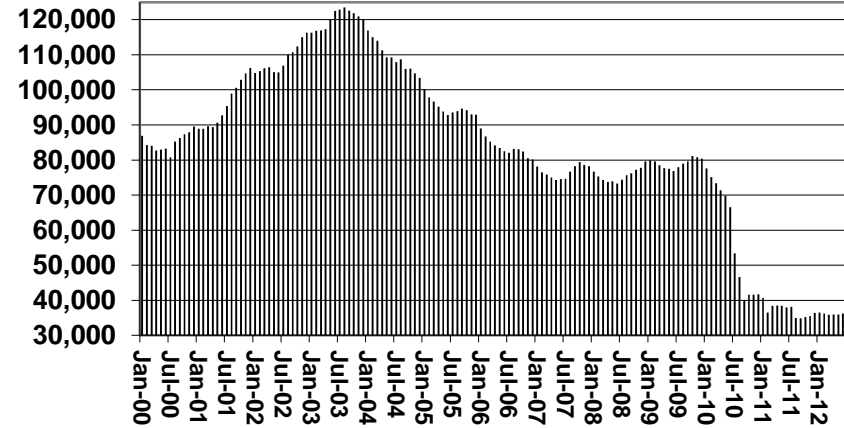
CASH ASSISTANCE PROGRAM

COMPARISON OF CASES, RECIPIENTS, PAYMENTS & AVERAGE PAYMENTS FOR 2000, 2001, 2002, 2003, 2004, 2005, 2006, 2007, 2008, 2009, 2010, 2011, & 2012

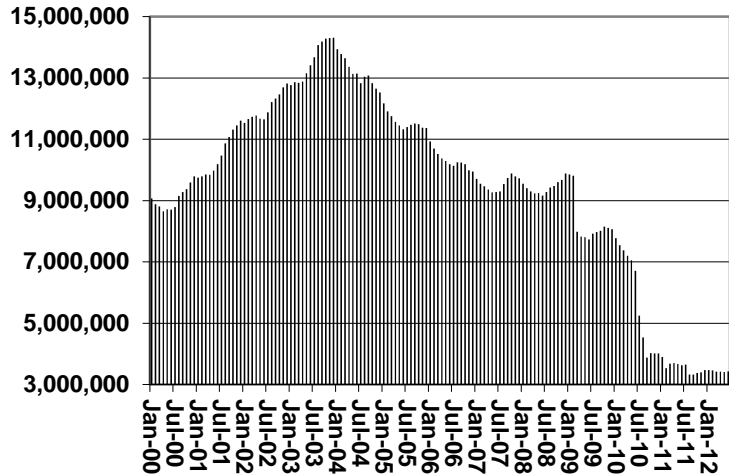
Cases



Recipients



Payments



Average Payment Per Recipient

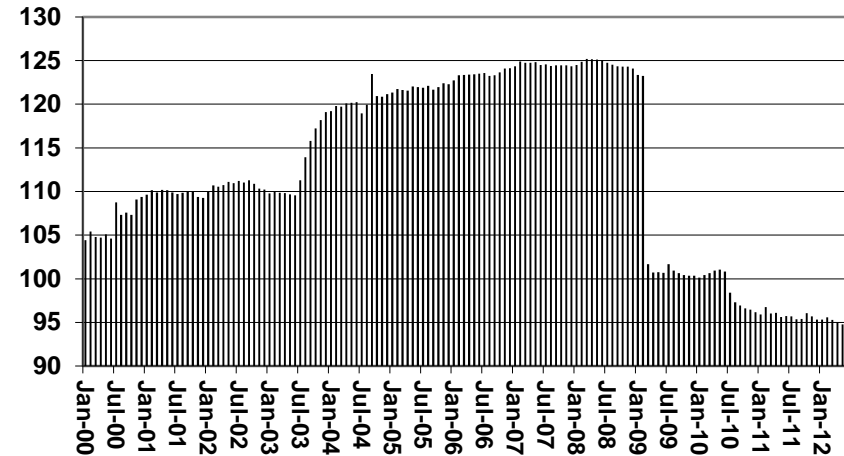


TABLE 1A
CA-UP

CASH ASSISTANCE UNEMPLOYED PARENT PROGRAM: ARIZONA 1/

	JUNE 2012							CHANGE FROM			JUNE 2011		
	FAMILIES (CASES)	PERSONS (RECIP.)	ADULTS	CHILDREN	TOTAL PAYMENTS	AVERAGE PAYMENT/ CASE	AVERAGE PAYMENT/ RECIP.	FAMILIES (CASES)	PERSONS (RECIP.)	TOTAL PAYMENTS	FAMILIES (CASES)	PERSONS (RECIP.)	TOTAL PAYMENTS
ARIZONA	552	2,109	1,004	1,105	159,637	289.20	75.69	(20)	(46)	(5,718)	70	282	20,732
REGION													
MARICOPA	295	1,153	531	622	87,302	295.94	75.72	(27)	(105)	(9,058)	8	47	3,195
NORTHERN	39	155	75	80	11,328	290.46	73.08	1	8	2	3	14	470
APACHE	5	15	8	7	1,291	258.20	86.07	(2)	(7)	(613)	0	(6)	(295)
COCONINO	4	19	8	11	1,212	303.00	63.79	2	8	546	3	16	865
MOHAVE	24	93	47	46	7,014	292.25	75.42	3	16	518	1	4	(52)
NAVAJO	6	28	12	16	1,811	301.83	64.68	(2)	(9)	(449)	(1)	0	(48)
CENTRAL	94	339	173	166	25,902	275.55	76.41	1	17	1,298	52	187	14,946
GILA	36	112	65	47	10,229	284.14	2.54	6	20	2,101	36	112	10,229
LA PAZ	2	9	3	6	687	343.50	76.33	2	9	687	1	5	352
PINAL	37	142	70	72	9,552	258.16	67.27	(7)	(12)	(1,490)	15	70	4,365
YAVAPAI	6	24	10	14	1,783	297.17	74.29	0	(5)	(243)	(3)	(9)	(695)
YUMA	13	52	25	27	3,651	280.85	70.21	2	9	692	6	22	1,377
SOUTHERN	124	462	225	237	35,105	283.10	75.98	3	30	1,591	4	21	1,439
COCHISE	4	14	8	6	982	245.50	70.14	0	1	107	2	9	484
GRAHAM	13	45	22	23	3,738	0.00	0.00	(1)	(4)	(764)	11	38	3,126
GREENLEE	1	3	2	1	209	209.00	69.67	0	0	0	1	3	209
PIMA	103	383	187	196	29,061	282.15	75.88	3	21	1,632	(11)	(42)	(3,156)
SANTA CRUZ	3	17	6	11	1,115	371.67	12.29	1	12	616	1	13	776

1/EXCLUDES: PRIOR MONTH NET TOTALS OF: 38 CASES; 160 RECIPIENTS; \$14,082.
GRANT DIVERSION TOTALS OF: 0 CASES; \$0.
ZERO PAY TOTALS OF 8 CASES; 37 RECIPIENTS.

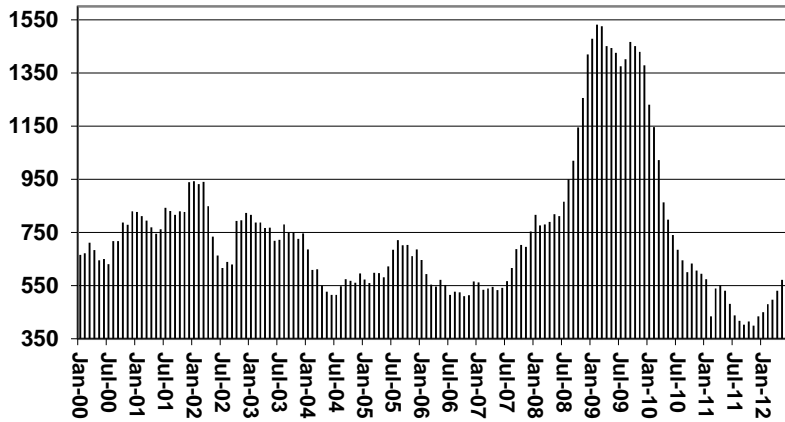
CASES WITH GRANT UNDER \$100 (SEE TABLE 1C).

	CURRENT MO. CASES	CURRENT MO. RECIP.	CURRENT MO. DOLLARS	PRIOR MO. CASES	PRIOR MO. RECIP.	PRIOR MO. DOLLARS
PASQUAYYAQUI	8	36	\$3,262	2	7	\$567
WM APACHE	0	0	\$0	0	0	\$0
SALT RIVER	0	0	\$0	0	0	\$0
SAN CARLOS	37	120	\$11,151	3	10	\$512
HOPI	0	0	\$0	0	0	\$0
TOTAL	45	156	\$14,413	5	17	\$1,079

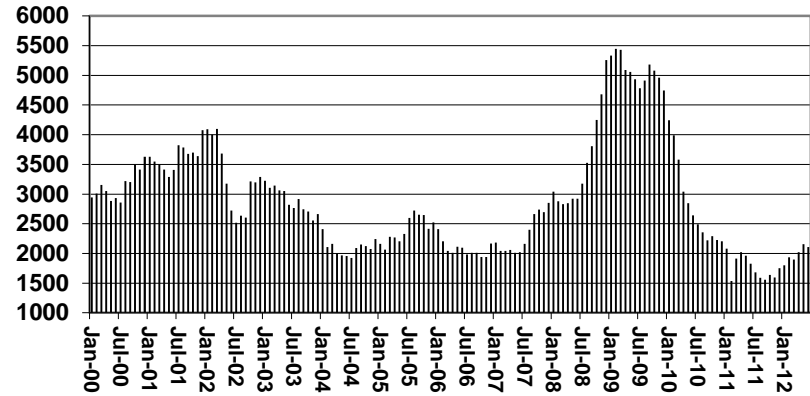
CHART 1A

CASH ASSISTANCE UNEMPLOYED PARENT PROGRAM COMPARISON OF CASES, RECIPIENTS, PAYMENTS & AVERAGE PAYMENTS FOR 2000, 2001, 2002, 2003, 2004, 2005, 2006, 2007, 2008, 2009, 2010, 2011, & 2012

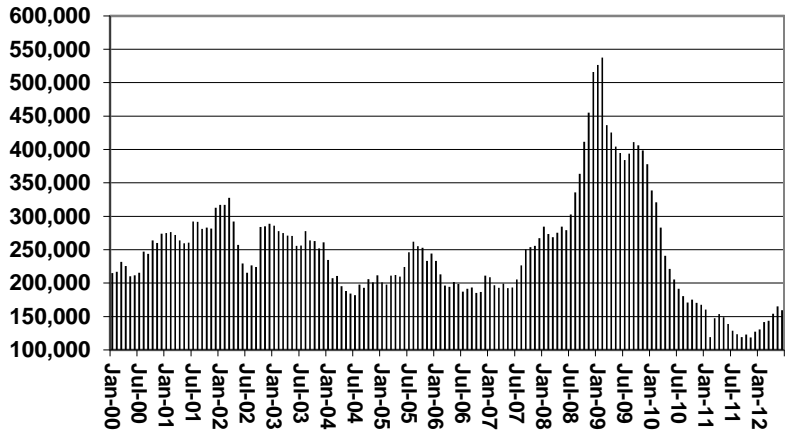
Cases



Recipients



Payments



Average Payment Per Recipient

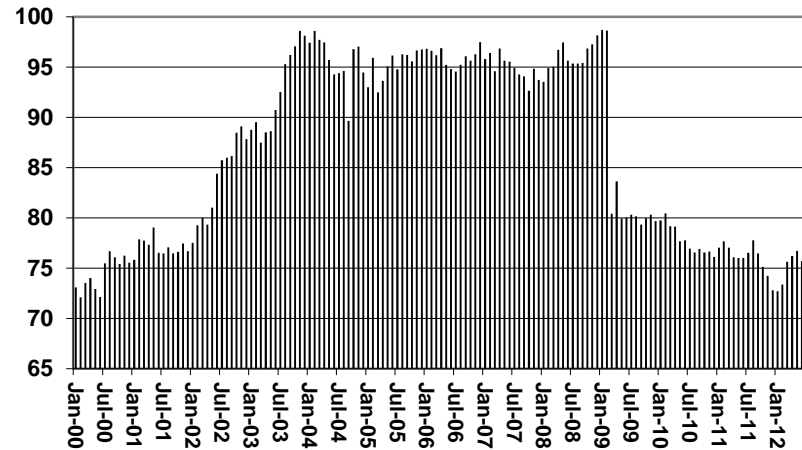


TABLE 1B 1/

CASH ASSISTANCE: ARIZONA
 CASES WITH GRANT UNDER \$100

	JUNE 2012							CHANGE FROM			JUNE 2011		
	FAMILIES (CASES)	PERSONS (RECIP.)	ADULTS	CHILDREN	TOTAL PAYMENTS	AVERAGE PAYMENT/ CASE	AVERAGE PAYMENT/ RECIP.	MAY 2012			FAMILIES (CASES)	PERSONS (RECIP.)	TOTAL PAYMENTS
								FAMILIES (CASES)	PERSONS (RECIP.)	TOTAL PAYMENTS			
ARIZONA	732	1,488	403	1,085	52,931	72.31	35.57	47	50	(1,786)	94	159	6,976
REGION													
MARICOPA	506	1,061	279	782	35,956	71.06	33.89	44	72	(1,289)	115	246	7,275
NORTHERN	35	62	21	41	2,699	77.11	43.53	(6)	(19)	(479)	(12)	(26)	(220)
APACHE	0	0	0	0	0	0.00	0.00	0	0	0	0	0	(18)
COCONINO	9	17	5	12	662	73.56	38.94	1	(1)	49	7	13	576
MOHAVE	20	36	14	22	1,627	81.35	45.19	(4)	(16)	(114)	(13)	(23)	(395)
NAVAJO	6	9	2	7	410	68.33	45.56	(3)	(2)	(414)	(6)	(16)	(383)
CENTRAL	64	123	35	88	4,903	76.61	39.86	(12)	(29)	(597)	7	(6)	805
GILA	3	4	1	3	310	103.33	77.50	0	(1)	(18)	1	0	158
LA PAZ	2	5	2	3	158	79.00	31.60	(1)	(2)	(8)	(1)	(1)	(114)
PINAL	35	67	19	48	2,702	77.20	40.33	(5)	(10)	(377)	9	7	792
YAVAPAI	16	28	8	20	1,255	78.44	44.82	3	4	362	2	(1)	343
YUMA	8	19	5	14	478	59.75	25.16	(9)	(20)	(556)	(4)	(11)	(374)
SOUTHERN	127	242	68	174	9,373	73.80	38.73	21	26	579	(16)	(55)	(884)
COCHISE	18	30	7	23	1,307	72.61	43.57	9	16	367	9	15	592
GRAHAM	3	5	1	4	275	91.67	55.00	3	5	239	2	3	171
GREENLEE	1	2	1	1	17	17.00	8.50	(1)	(3)	(82)	1	2	17
PIMA	100	198	58	140	7,361	73.61	37.18	11	9	189	(31)	(74)	(1,911)
SANTA CRUZ	5	7	1	6	413	82.60	59.00	(1)	(1)	(134)	3	(1)	247

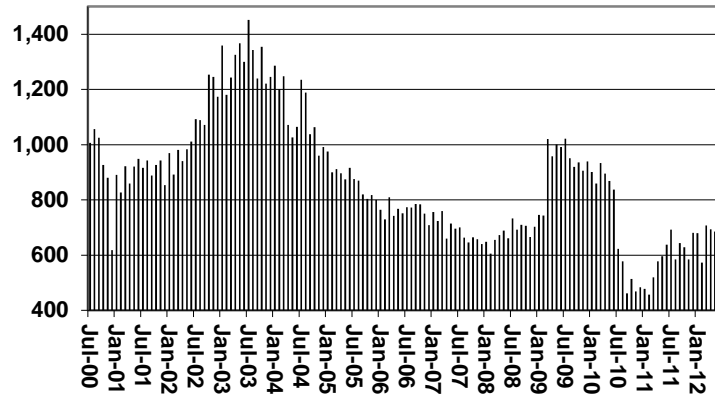
EXCLUDES: PRIOR MONTH NET TOTALS OF 435 CASES; 1,010 RECIPIENTS; \$23,526.

CHART 1B

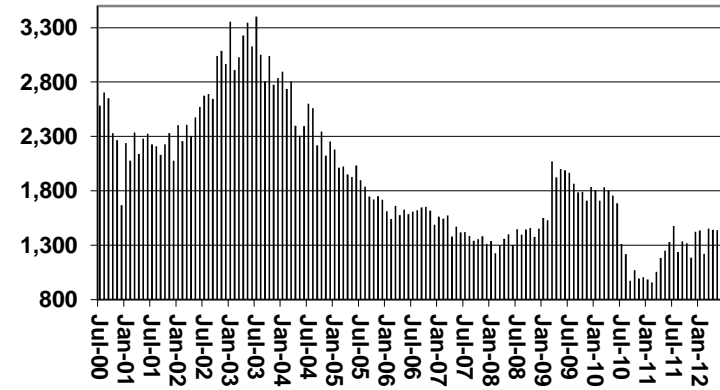
CASH ASSISTANCE PROGRAM CASES WITH GRANT UNDER \$100

FOR 2000, 2001, 2002, 2003, 2004, 2005, 2006, 2007, 2008, 2009, 2010, 2011, & 2012

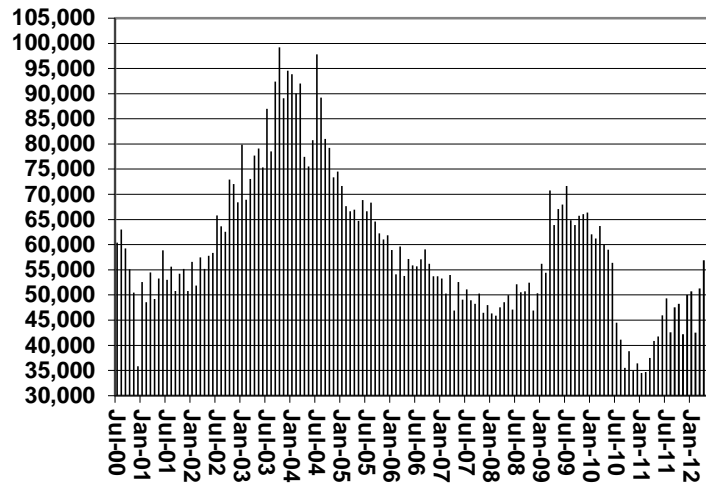
Cases



Recipients



Payments



Average Payment Per Recipient

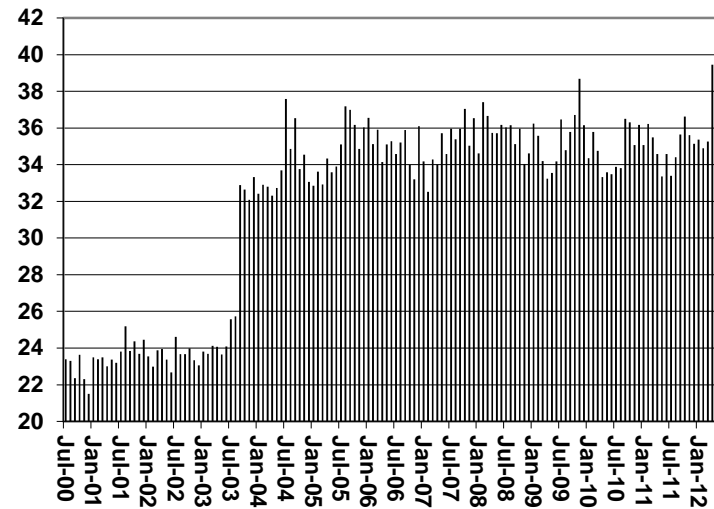


TABLE 1C 1/

CASH ASSISTANCE UNEMPLOYED PARENT PROGRAM: ARIZONA
 CASES WITH GRANT UNDER \$100

	JUNE 2012							CHANGE FROM			JUNE 2011		
	FAMILIES (CASES)	PERSONS (RECIP.)	ADULTS	CHILDREN	TOTAL PAYMENTS	AVERAGE PAYMENT/ CASE	AVERAGE PAYMENT/ RECIP.	FAMILIES (CASES)	PERSONS (RECIP.)	TOTAL PAYMENTS	FAMILIES (CASES)	PERSONS (RECIP.)	TOTAL PAYMENTS
ARIZONA	11	44	20	24	647	58.82	14.70	(3)	(7)	(233)	4	21	141
REGION													
MARICOPA	6	25	12	13	337	56.17	13.48	(2)	(3)	(123)	2	15	107
NORTHERN	0	0	0	0	0	0.00	0.00	(1)	(5)	(76)	0	0	0
APACHE	0	0	0	0	0	0.00	0.00	0	0	0	0	0	0
COCONINO	0	0	0	0	0	0.00	0.00	0	0	0	0	0	0
MOHAVE	0	0	0	0	0	0.00	0.00	(1)	(5)	(76)	0	0	0
NAVAJO	0	0	0	0	0	0.00	0.00	0	0	0	0	0	0
CENTRAL	1	3	1	2	38	38.00	12.67	(1)	(4)	(85)	0	(2)	(58)
GILA	0	0	0	0	0	0.00	0.00	0	0	0	0	0	0
LA PAZ	0	0	0	0	0	0.00	0.00	0	0	0	0	0	0
PINAL	1	3	1	2	38	38.00	12.67	1	3	38	0	(2)	(58)
YAVAPAI	0	0	0	0	0	0.00	0.00	(1)	(3)	(88)	0	0	0
YUMA	0	0	0	0	0	0.00	0.00	(1)	(4)	(35)	0	0	0
SOUTHERN	4	16	7	9	272	68.00	17.00	1	5	51	2	8	92
COCHISE	0	0	0	0	0	0.00	0.00	0	0	0	0	0	0
GRAHAM	0	0	0	0	0	0.00	0.00	0	0	0	0	0	0
GREENLEE	0	0	0	0	0	0.00	0.00	0	0	0	0	0	0
PIMA	4	16	7	9	272	68.00	17.00	1	5	51	2	8	92
SANTA CRUZ	0	0	0	0	0	0.00	0.00	0	0	0	0	0	0

EXCLUDES: PRIOR MONTH NET TOTALS OF 30 CASES; 108 RECIPIENTS; \$1,655.

CHART 1C

CASH ASSISTANCE UNEMPLOYED PARENT PROGRAM

CASES WITH GRANT UNDER \$100

FOR 2000, 2001, 2002, 2003, 2004, 2005, 2006, 2007, 2008, 2009, 2010, 2011, & 2012

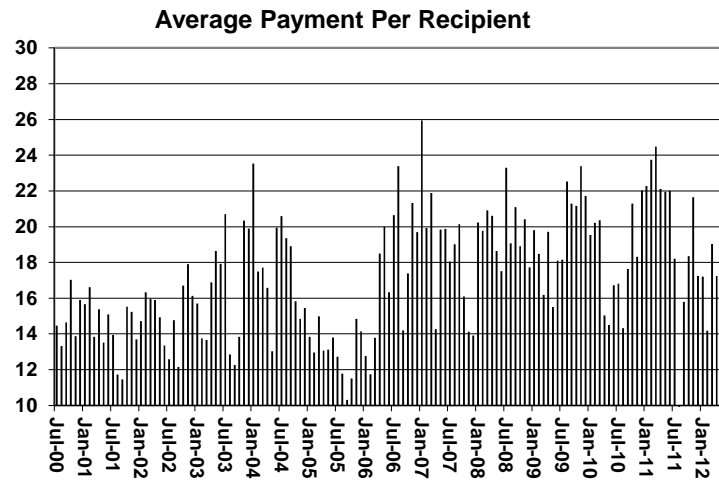
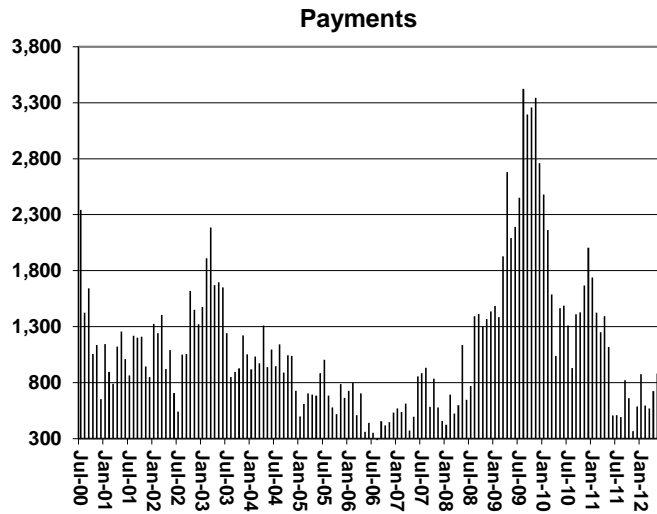
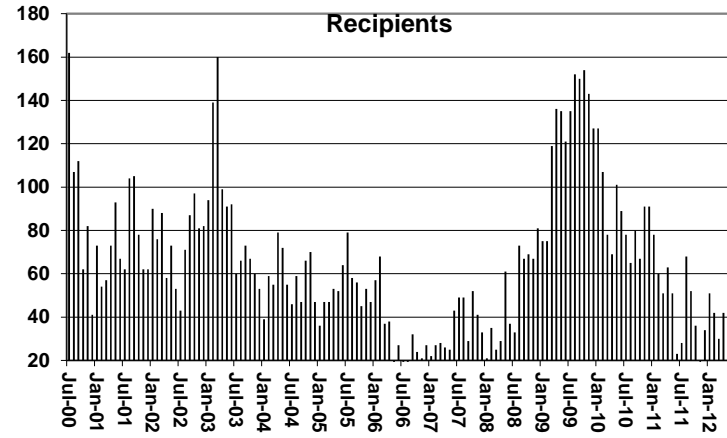
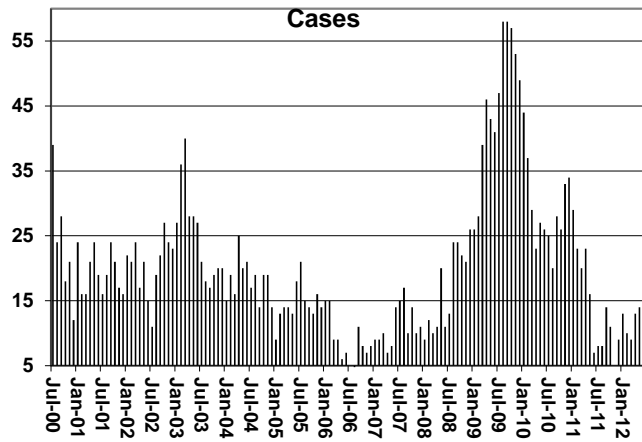


TABLE 4
TUBERCULOSIS CONTROL: ARIZONA 1/

	JUNE 2012					CHANGE FROM			MAY 2012			JUNE 2011		
	NUMBER OF CASES	PERSONS (RECIP.)	TOTAL PAYMENTS	AVERAGE PAYMENT/ CASE	AVERAGE PAYMENT/ RECIP.	NUMBER OF CASES	PERSONS (RECIP.)	TOTAL PAYMENTS	NUMBER OF CASES	PERSONS (RECIP.)	TOTAL PAYMENTS	NUMBER OF CASES	PERSONS (RECIP.)	TOTAL PAYMENTS
ARIZONA	3	3	404	134.67	134.67	0	0	0	(3)	(3)	(374)			
REGION														
MARICOPA	2	2	346	173.00	173.00	0	0	0	(4)	(4)	(432)			
NORTHERN	1	1	58	58.00	58.00	0	0	0	1	1	58			
APACHE	0	0	0	0.00	0.00	0	0	0	0	0	0			
COCONINO	0	0	0	0.00	0.00	0	0	0	0	0	0			
MOHAVE	1	1	58	58.00	58.00	0	0	0	1	1	58			
NAVAJO	0	0	0	0.00	0.00	0	0	0	0	0	0			
CENTRAL	0	0	0	0.00	0.00	0	0	0	0	0	0			
GILA	0	0	0	0.00	0.00	0	0	0	0	0	0			
LA PAZ	0	0	0	0.00	0.00	0	0	0	0	0	0			
PINAL	0	0	0	0.00	0.00	0	0	0	0	0	0			
YAVAPAI	0	0	0	0.00	0.00	0	0	0	0	0	0			
YUMA	0	0	0	0.00	0.00	0	0	0	0	0	0			
SOUTHERN	0	0	0	0.00	0.00	0	0	0	0	0	0			
COCHISE	0	0	0	0.00	0.00	0	0	0	0	0	0			
GRAHAM	0	0	0	0.00	0.00	0	0	0	0	0	0			
GREENLEE	0	0	0	0.00	0.00	0	0	0	0	0	0			
PIMA	0	0	0	0.00	0.00	0	0	0	0	0	0			
SANTA CRUZ	0	0	0	0.00	0.00	0	0	0	0	0	0			

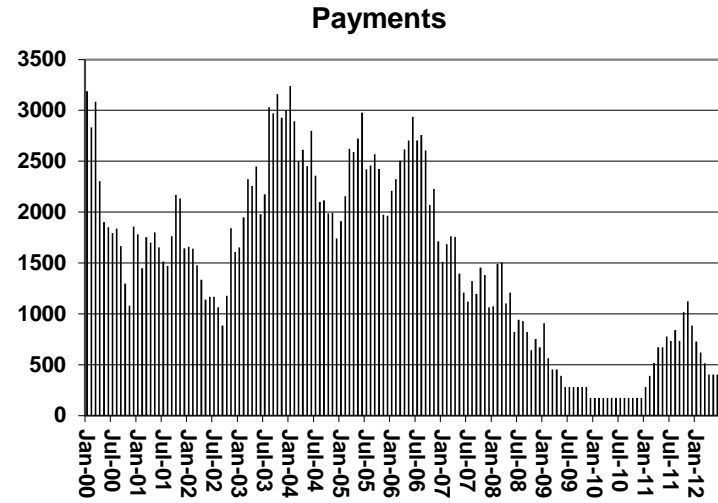
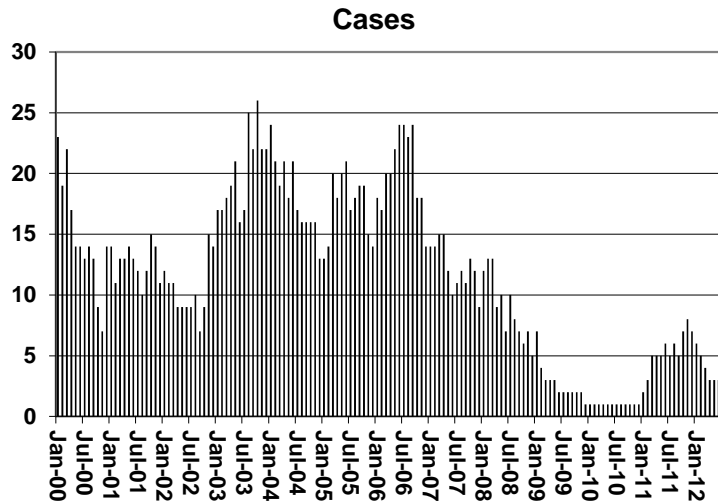
1/EXCLUDES: PRIOR MONTH NET TOTALS OF : 0 CASES; 0 RECIPIENTS; \$0.

CHART 4

TUBERCULOSIS CONTROL PROGRAM

COMPARISON OF CASES, PAYMENTS & AVERAGE PAYMENTS

FOR 2000, 2001, 2002, 2003, 2004, 2005, 2006, 2007, 2008, 2009, 2010, 2011, & 2012



Average Payment Per Case

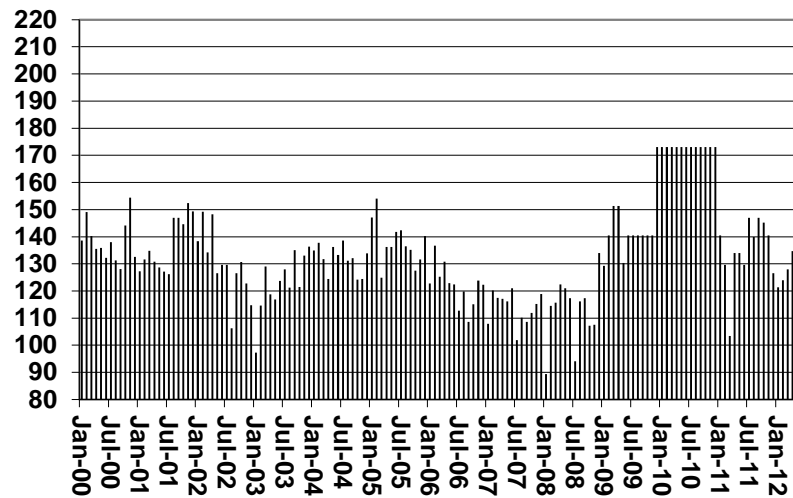


TABLE 6

SUPPLEMENTAL NUTRITION ASSISTANCE PROGRAM: ARIZONA 1/

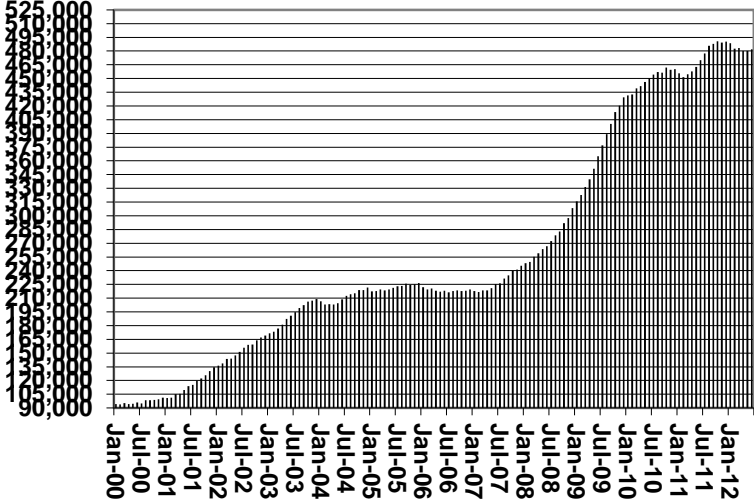
	CHANGE FROM												
	JUNE 2012							MAY 2012			JUNE 2011		
	HOUSEHOLDS	PERSONS	ADULTS	CHILDREN	TOTAL PAYMENTS ISSUANCE	AVERAGE PAYMT./ HOUSEHOLD	AVERAGE PAYMT./ PERSON	HOUSEHOLDS	PERSONS	TOTAL PAYMENTS ISSUANCE	HOUSEHOLDS	PERSONS	TOTAL PAYMENTS ISSUANCE
ARIZONA	481,901	1,116,483	571,421	545,062	140,161,083	290.85	125.54	1,858	5,650	730,559	11,841	33,032	3,367,772
REGION													
MARICOPA	259,891	607,844	289,464	318,380	77,217,276	297.11	127.03	1,542	3,664	508,166	8,434	23,408	2,758,491
NORTHERN	56,309	134,557	76,394	58,163	16,738,731	297.27	124.40	(84)	(141)	(19,331)	2,484	4,075	566,303
APACHE	10,762	28,871	15,980	12,891	3,595,989	334.14	124.55	4	(90)	9,090	577	973	168,919
COCONINO	10,146	24,390	13,194	11,196	3,047,152	300.33	124.93	(35)	(152)	(37,292)	527	585	135,488
MOHAVE	21,376	45,371	27,337	18,034	5,635,850	263.65	124.22	8	183	15,680	685	1,261	104,146
NAVAJO	14,025	35,925	19,883	16,042	4,459,740	317.99	124.14	(61)	(82)	(6,809)	695	1,256	157,750
CENTRAL	64,206	153,072	82,984	70,088	18,603,937	289.75	121.54	321	1,405	138,152	1,994	5,745	560,597
GILA	6,172	13,638	7,888	5,750	1,755,522	284.43	128.72	(15)	24	2,717	52	244	18,924
LA PAZ	2,067	4,247	2,461	1,786	541,582	262.01	127.52	0	1	1,148	58	121	17,621
PINAL	23,335	58,407	30,064	28,343	7,224,702	309.61	123.70	17	250	8,600	498	1,848	144,386
YAVAPAI	15,842	31,943	19,264	12,679	3,894,925	245.86	121.93	(45)	(69)	(28,076)	704	1,365	141,082
YUMA	16,790	44,837	23,307	21,530	5,187,206	308.95	115.69	364	1,199	153,763	682	2,167	238,584
SOUTHERN	101,495	221,010	122,579	98,431	27,601,139	271.95	124.89	79	722	103,572	(1,071)	(196)	(517,619)
COCHISE	11,035	24,104	13,810	10,294	2,895,528	262.39	120.13	14	89	9,149	241	805	33,176
GRAHAM	3,416	7,927	4,371	3,556	145,765	42.67	18.39	2,889	6,786	1,778	(150)	(269)	(891,777)
GREENLEE	529	1,148	655	493	976,470	1845.88	850.58	(2,887)	(6,747)	9,817	26	38	833,819
PIMA	81,791	175,291	97,264	78,027	22,122,437	270.48	126.20	28	481	64,540	(1,422)	(1,310)	(553,103)
SANTA CRUZ	4,724	12,540	6,479	6,061	1,460,939	309.26	116.50	35	113	18,288	234	540	60,266

1/EXCLUDES: PRIOR MONTH NET TOTALS OF : 7,241 CASES; 19,348 RECIPIENTS; \$1,213,428.
 AGED CANCELATIONS: 11,386 CASES; 14,449 RECIPIENTS; \$526,636.
 SNAP CONVERSIONS: 0 CASES; 0 RECIPIENTS; \$0.
 SNAP CHILD ONLY: 62,754 CASES; 148,777 RECIPIENTS; \$22,479,763.
 SNAP ZERO PAY: 5,476 CASES; 20,785 RECIPIENTS.

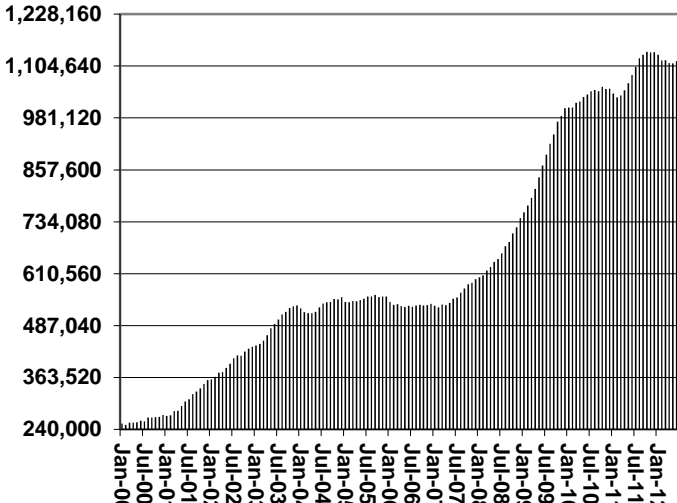
CHART 6

SUPPLEMENTAL NUTRITION ASSISTANCE PROGRAM (SNAP) COMPARISON OF HOUSEHOLDS, RECIPIENTS, PAYMENTS & AVERAGE PAYMENTS FOR 2000, 2001, 2002, 2003, 2004, 2005, 2006, 2007, 2008, 2009, 2010, 2011, & 2012

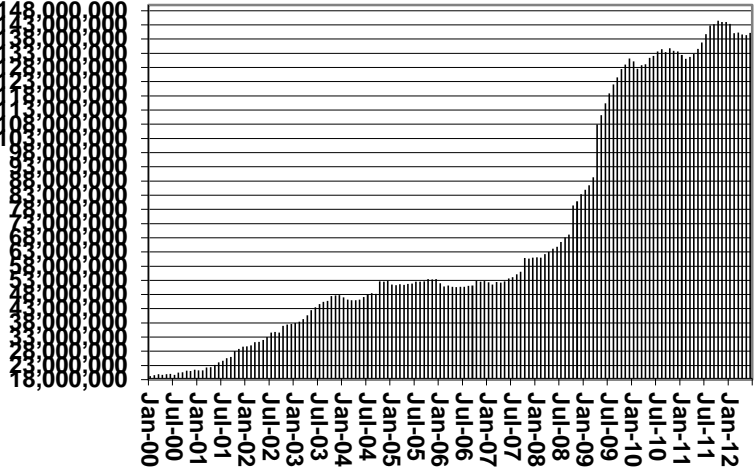
Households



Recipients



Payments



Average Payment Per Household

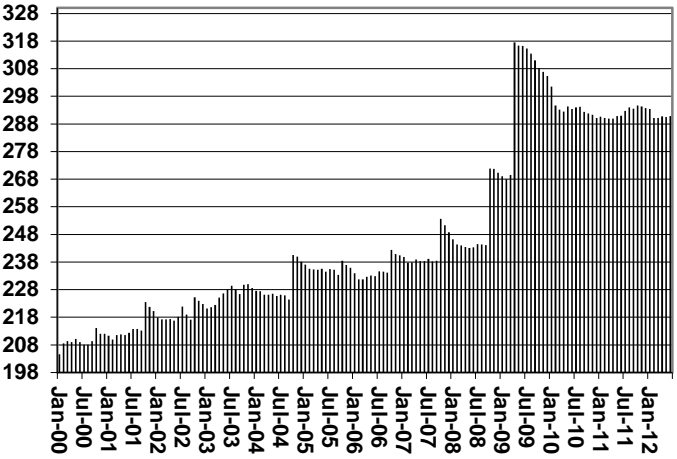


TABLE 7A
MEDICAL ASSISTANCE PROGRAM
RECIPIENTS
JUNE 2012

	SOBRA WOMAN 133% FPL	SOBRA CHILD	ADULT W/O CHILD 100% FPL	FOSTER CARE	1931 36% FPL	FEDERAL EMERGENCY SERVICES	INFANTS	ADULT W/O CHILD 40% FPL	MEDICAL W/SPEND DOWN	SOBRA WOMAN 100% FPL	SOBRA CHILD 100% FPL	TRANSITIONAL MEDICAL T1 - T4	1931 100% FPL	YATI	OTHER	TOTAL CASES
ARIZONA	12,251	55,617	28,025	14,722	368,859	65,358	45,603	88,414	0	4,590	242,320	47,001	122,120	358	28,364	1,123,602
REGION																
MARICOPA	6,976	31,931	13,779	8,276	207,285	53,328	27,800	43,453	0	2,520	145,476	25,161	64,073	199	14,801	645,058
NORTHERN	1,286	5,468	3,232	689	47,345	1,130	4,424	14,288	0	495	23,140	5,232	14,261	20	2,932	123,942
APACHE	212	1,192	457	43	12,004	77	852	3,548	0	66	4,068	894	2,498	1	412	26,324
COCONINO	298	956	572	124	8,919	460	1,012	2,302	0	119	4,700	1,217	2,792	10	436	23,917
MOHAVE	447	1,755	1,462	357	12,573	377	1,365	4,341	0	174	8,717	1,771	5,268	7	1,580	40,194
NAVAJO	329	1,565	741	165	13,849	216	1,195	4,097	0	136	5,655	1,350	3,703	2	504	33,507
CENTRAL	1,816	7,738	4,085	1,670	48,100	4,071	5,773	11,577	0	746	30,591	6,992	18,412	41	4,336	145,948
GILA	133	496	351	112	4,846	108	459	1,512	0	54	1,996	506	1,294	2	348	12,217
LA PAZ	44	210	130	26	1,380	111	148	421	0	23	732	94	363	0	159	3,841
PINAL	637	3,258	1,169	640	20,574	1,310	2,199	4,445	0	280	11,269	2,496	6,257	13	1,344	55,891
YAVAPAI	429	1,548	1,257	569	8,175	1,222	1,043	2,577	0	138	6,437	1,548	3,868	22	1,157	29,990
YUMA	573	2,226	1,178	323	13,125	1,320	1,924	2,622	0	251	10,157	2,348	6,630	4	1,328	44,009
SOUTHERN	2,173	10,480	6,929	4,087	66,129	6,829	7,606	19,096	0	829	43,113	9,616	25,374	98	6,295	208,654
COCHISE	208	1,010	889	256	7,021	421	733	1,860	0	76	4,452	958	2,813	8	871	21,576
GRAHAM	94	383	232	87	2,769	29	330	764	0	40	1,372	446	824	1	164	7,535
GREENLEE	12	56	38	10	488	4	54	126	0	3	186	41	85	1	32	1,136
P MA	1,739	8,489	5,299	3,693	52,251	5,986	6,084	15,517	0	658	34,098	7,484	19,749	88	4,765	165,900
SANTA CRUZ	120	542	471	41	3,600	389	405	829	0	52	3,005	687	1,903	0	463	12,507

TABLE 7B
MEDICAL ASSISTANCE PROGRAM
RECIPIENTS

CHANGE FROM

MAY 2012

	SOBRA WOMAN 133% FPL	SOBRA CHILD	ADULT W/O CHILD 100% FPL	FOSTER CARE	1931 36% FPL	FEDERAL EMERGENCY SERVICES	INFANTS	ADULT W/O CHILD 40% FPL	MEDICAL W/SPEND DOWN	SOBRA WOMAN 100% FPL	SOBRA CHILD 100% FPL	TRANSITIONAL MEDICAL T1 - T4	1931 100% FPL	YATI	OTHER	TOTAL CASES
ARIZONA	220	5,287	(2,022)	179	(1,752)	874	95	(4,859)	0	37	(807)	(1,605)	(801)	10	(135)	(5,279)
REGION																
MARICOPA	132	2,790	(980)	126	(665)	864	97	(2,670)	0	27	(438)	(473)	(273)	14	(95)	(1,544)
NORTHERN	31	662	(246)	5	(458)	6	(25)	(655)	0	(23)	(247)	(8)	(260)	(3)	0	(1,221)
APACHE	15	232	(32)	1	(217)	9	(2)	(154)	0	(12)	(109)	(59)	(81)	0	25	(384)
COCONINO	5	73	(55)	3	(45)	(7)	(3)	(96)	0	(1)	(70)	79	(81)	0	(1)	(199)
MOHAVE	13	186	(86)	2	(137)	8	(9)	(220)	0	(8)	20	(94)	(11)	(2)	(5)	(343)
NAVAJO	(2)	171	(73)	(1)	(59)	(4)	(11)	(185)	0	(2)	(88)	66	(87)	(1)	(19)	(295)
CENTRAL	14	781	(279)	7	(189)	14	32	(618)	0	13	148	(863)	18	0	(59)	(981)
GILA	0	65	(26)	3	(10)	(4)	(2)	(49)	0	0	(48)	10	(40)	(1)	(3)	(105)
LA PAZ	4	19	(22)	(1)	4	0	9	(22)	0	2	(3)	(7)	(22)	0	(3)	(42)
PINAL	(2)	224	(64)	(1)	(271)	3	22	(262)	0	4	(103)	(28)	(49)	(2)	(19)	(548)
YAVAPAI	5	145	(86)	3	(137)	8	(6)	(135)	0	4	(115)	(11)	(110)	1	(27)	(461)
YUMA	7	328	(81)	3	225	7	9	(150)	0	3	417	(827)	239	2	(7)	175
SOUTHERN	43	1,054	(517)	41	(440)	(10)	(9)	(916)	0	20	(270)	(261)	(286)	(1)	19	(1,533)
COCHISE	1	121	(40)	2	(101)	(7)	(18)	(60)	0	(1)	(16)	(28)	(29)	4	16	(156)
GRAHAM	(1)	50	(13)	2	25	2	(4)	(13)	0	7	(22)	37	(32)	0	(1)	37
GREENLEE	2	12	(2)	0	7	0	(5)	(5)	0	(2)	(10)	4	(6)	0	2	(3)
P MA	31	783	(436)	35	(388)	11	17	(812)	0	16	(184)	(198)	(198)	(5)	(4)	(1,332)
SANTA CRUZ	10	88	(26)	2	17	(16)	1	(26)	0	0	(38)	(76)	(21)	0	6	(79)

TABLE 7C
MEDICAL ASSISTANCE PROGRAM
RECIPIENTS

CHANGE FROM

JUNE 2011

	SOBRA WOMAN 133% FPL	SOBRA CHILD	ADULT W/O CHILD 100% FPL	FOSTER CARE	1931 36% FPL	FEDERAL EMERGENCY SERVICES	INFANTS	ADULT W/O CHILD 40% FPL	MEDICAL W/SPEND DOWN	SOBRA WOMAN 100% FPL	SOBRA CHILD 100% FPL	TRANSITIONAL MEDICAL T1 - T4	3E 1931 100% FPL	YATI	OTHER	TOTAL CASES
ARIZONA	1,310	(15,729)	(36,963)	1,739	25,473	13,839	355	(87,723)	(5,157)	471	6,134	4,344	(4,398)	26	(1,221)	(97,500)
REGION																
MARICOPA	940	(8,738)	(18,230)	1,225	15,163	12,920	1,028	(46,535)	(2,775)	316	6,282	3,333	(1,617)	17	(575)	(37,246)
NORTHERN	34	(2,345)	(4,562)	17	3,598	124	(204)	(11,778)	(790)	(45)	(410)	490	(750)	5	(151)	(16,767)
APACHE	10	(402)	(671)	8	756	3	(23)	(2,406)	(157)	(48)	(240)	28	(243)	1	(16)	(3,400)
COCONINO	6	(575)	(1,011)	(11)	634	82	(56)	(2,366)	(122)	12	(176)	237	(257)	0	(24)	(3,627)
MOHAVE	24	(539)	(1,762)	2	969	21	(57)	(3,906)	(366)	(29)	120	84	(135)	3	(52)	(5,623)
NAVAJO	(6)	(829)	(1,118)	18	1,239	18	(68)	(3,100)	(145)	20	(114)	141	(115)	1	(59)	(4,117)
CENTRAL	153	(1,831)	(5,801)	143	4,171	354	(160)	(10,825)	(687)	179	469	280	(778)	5	(126)	(14,454)
GILA	33	(165)	(413)	11	129	7	(24)	(1,061)	(67)	19	67	60	(46)	1	(13)	(1,462)
LA PAZ	13	(69)	(133)	7	92	(23)	8	(381)	(8)	11	78	(72)	(14)	0	(7)	(498)
PINAL	61	(1,022)	(1,879)	43	1,814	136	(70)	(4,444)	(190)	81	190	245	(203)	(4)	1	(5,241)
YAVAPAI	19	(180)	(1,546)	59	613	135	(117)	(2,669)	(225)	23	246	(122)	(233)	8	(97)	(4,086)
YUMA	27	(395)	(1,830)	23	1,523	99	43	(2,270)	(197)	45	(112)	169	(282)	0	(10)	(3,167)
SOUTHERN	183	(2,815)	(8,370)	354	2,541	441	(309)	(18,585)	(905)	21	(207)	241	(1,253)	(1)	(369)	(29,033)
COCHISE	(4)	(331)	(962)	15	256	20	(56)	(1,514)	(129)	(31)	35	30	5	2	(34)	(2,698)
GRAHAM	(24)	(85)	(279)	14	(96)	10	(31)	(720)	(46)	16	(43)	86	(70)	0	(21)	(1,289)
GREENLEE	2	4	(26)	2	79	1	0	(114)	(10)	(3)	(59)	1	(13)	0	(2)	(138)
P MA	195	(2,259)	(6,673)	315	1,993	423	(192)	(15,868)	(691)	23	(26)	71	(1,066)	(3)	(271)	(24,029)
SANTA CRUZ	14	(144)	(430)	8	309	(13)	(30)	(369)	(29)	16	(114)	53	(109)	0	(41)	(879)

CHART 7

MEDICAL ASSISTANCE PROGRAM

COMPARISON OF RECIPIENTS

FOR 2000, 2001, 2002, 2003, 2004, 2005, 2006, 2007, 2008, 2009, 2010, 2011, & 2012

Total Recipients

