



---

DEPARTMENT OF ECONOMIC SECURITY

---

*Your Partner For A Stronger Arizona*

State of Arizona

Department of Economic Security

Family Assistance Administration

Statistical Bulletin

August, 2012

Phone: (602) 542-3678

<http://www.azdes.gov/appreports.aspx>

\*\*\*\* STATISTICAL BULLETIN \*\*\*\*  
ARIZONA DEPARTMENT OF ECONOMIC SECURITY  
FAMILY ASSISTANCE ADMINISTRATION  
BOX 6123, PHOENIX, ARIZONA 85005  
PHONE (602) 542-3678

AUGUST 2012

THIS ISSUE OF THE STATISTICAL BULLETIN COMPARES AUGUST 2012 DATA FOR EACH OF THE INDICATED PROGRAMS WITH THE INFORMATION FOR JULY 2012 AND AUGUST 2011. STATEWIDE SUMMARIES OF ACTIVITY WITHIN EACH OF THE SPECIFIC PROGRAMS FOR THIS REPORT PERIOD ARE DISCUSSED BELOW. THE TABLES COMPARE CURRENT AND PRIOR MONTH DATA. DISTRICT AND COUNTY COMPARISONS ARE PROVIDED WITHIN THIS BULLETIN

TANF SUMMARY

COMPARING TO JULY 2012, AUGUST 2012 CASES INCREASED BY 657 (3.73%) TO 18,286. RECIPIENTS INCREASED BY 1,933 (4.80%) TO 42,199. PAYMENTS INCREASED BY \$117,424 (3.20%) TO \$3,783,818. AVERAGE PAYMENT PER CASE DECREASED BY \$1.06 (0.51%) TO \$0.00. PAYMENT PER RECIPIENT DECREASED BY \$1.38 (1.52%) TO \$89.67.

COMPARING TO AUGUST 2011, AUGUST 2012 CASES INCREASED BY 1,545 (9.23%). RECIPIENTS INCREASED BY 4,406 (11.66%). TOTAL PAYMENTS INCREASED BY \$289,421 (8.28%). THE AVERAGE PAYMENT PER CASE DECREASED BY \$1.81 (0.87%). THE AVERAGE PAYMENT PER RECIPIENT DECREASED BY \$2.79 (3.02%).

CASH ASSISTANCE (CA)

COMPARING TO JULY 2012, AUGUST 2012 CASES INCREASED BY 492 (3.01%) TO 16,814. RECIPIENTS INCREASED BY 1,280 (3.50%) TO 37,819. PAYMENTS INCREASED BY \$93,138 (2.70%) TO \$3,547,142. AVERAGE PAYMENT PER CASE DECREASED BY \$0.66 (0.31%) TO \$210.96. PAYMENT PER RECIPIENT DECREASED BY \$0.74 (0.78%) TO \$93.79.

COMPARING TO AUGUST 2011, AUGUST 2012 CASES INCREASED BY 1,084 (6.89%). RECIPIENTS INCREASED BY 2,919 (8.36%). TOTAL PAYMENTS INCREASED BY \$219,288 (6.59%). THE AVERAGE PAYMENT PER CASE DECREASED BY \$0.60 (0.28%). THE AVERAGE PAYMENT PER RECIPIENT DECREASED BY \$1.56 (1.64%).

CASH ASSISTANCE UNEMPLOYED PARENT PROGRAM (CA-UP)

COMPARING TO JULY 2012, AUGUST 2012 CASES INCREASED BY 72 (13.24%) TO 616. RECIPIENTS INCREASED BY 286 (13.58%) TO 2,392. PAYMENTS INCREASED BY \$18,906 (11.94%) TO \$177,268. AVERAGE PAYMENT PER CASE DECREASED BY \$3.34 (1.15%) TO \$287.77. PAYMENT PER RECIPIENT DECREASED BY \$1.09 (1.44%) TO \$74.11.

COMPARING TO AUGUST 2011, AUGUST 2012 CASES INCREASED BY 198 (47.37%). RECIPIENTS INCREASED BY 770 (47.47%). TOTAL PAYMENTS INCREASED BY \$53,775 (43.54%). THE AVERAGE PAYMENT PER CASE DECREASED BY \$7.67 (2.60%). THE AVERAGE PAYMENT PER RECIPIENT DECREASED BY \$2.03 (2.66%).

CASH ASSISTANCE WITH GRANT UNDER \$100 (CA-MOE)

COMPARING TO JULY 2012, AUGUST 2012 CASES INCREASED BY 89 (11.80%) TO 843. RECIPIENTS INCREASED BY 347 (21.82%) TO 1,937. PAYMENTS INCREASED BY \$5,006 (9.36%) TO \$58,492. AVERAGE PAYMENT PER CASE DECREASED BY \$1.55 (2.18%) TO \$69.39. AVERAGE PAYMENT PER RECIPIENT DECREASED BY \$3.44 (10.23%) TO \$30.20.

COMPARING TO AUGUST 2011, AUGUST 2012 CASES INCREASED BY 258 (44.10%). RECIPIENTS INCREASED BY 700 (56.59%). TOTAL PAYMENTS INCREASED BY \$15,934 (37.44%). THE AVERAGE PAYMENT PER CASE DECREASED BY \$3.36 (4.62%). THE AVERAGE PAYMENT PER RECIPIENT DECREASED BY \$4.20 (12.21%).

CASH ASSISTANCE UNEMPLOYED PARENT PROGRAM WITH GRANT UNDER \$100 (CA-UP-MOE) NEW PROGRAM STARTING 7/01

COMPARING TO JULY 2012, AUGUST 2012 CASES INCREASED BY 4 (44.44%) TO 13. RECIPIENTS INCREASED BY 20 (64.52%) TO 51. PAYMENTS INCREASED BY \$374 (69.00%) TO \$916. AVERAGE PAYMENT PER CASE INCREASED BY \$10.24 (17.00%) TO \$70.46. PAYMENT PER RECIPIENT INCREASED BY \$0.48 (2.75%) TO \$17.96.

COMPARING TO AUGUST 2011, AUGUST 2012 CASES INCREASED BY 5 (62.50%). RECIPIENTS INCREASED BY 17 (3.14%). TOTAL PAYMENTS INCREASED BY \$424 (86.18%). THE AVERAGE PAYMENT PER CASE INCREASED BY \$8.96 (14.57%). THE AVERAGE PAYMENT PER RECIPIENT INCREASED BY \$3.49 (24.12%).

TUBERCULOSIS CONTROL PROGRAM (TC)

COMPARING TO JULY 2012, AUGUST 2012 CASES INCREASED BY 0 (0.00%) TO 2. RECIPIENTS INCREASED BY 0 (0.00%) TO 2. PAYMENTS DECREASED BY \$156 (45.09%) TO \$190. AVERAGE PAYMENT PER CASE INCREASED BY \$33.92 (19.61%) TO \$206.92. AVERAGE PAYMENT PER RECIPIENT DECREASED BY \$78.00 (45.09%) TO \$95.00.

COMPARING TO AUGUST 2011, AUGUST 2012 CASES DECREASED BY 4 (66.67%). RECIPIENTS DECREASED BY 4 (66.67%). TOTAL PAYMENTS DECREASED BY \$649 (77.35%). THE AVERAGE PAYMENT PER CASE INCREASED BY \$67.09 (47.98%). THE AVERAGE PAYMENT PER RECIPIENT DECREASED BY \$44.83 (32.06%).

SUPPLEMENTAL NUTRITION ASSISTANCE PROGRAM (SNAP)

COMPARING TO JULY 2012, AUGUST 2012 SUPPLEMENTAL NUTRITION ASSISTANCE HOUSEHOLDS INCREASED BY 3,821 (0.79%) TO 486,306. PERSONS RECEIVING SUPPLEMENTAL NUTRITION ASSISTANCE INCREASED BY 2,544 (0.23%) TO 1,122,151. TOTAL COUPON ISSUANCE INCREASED BY \$865,299 (0.61%) TO \$142,260,103. THE AVERAGE HOUSEHOLD ALLOTMENT DECREASED BY \$0.53 (0.18%) TO \$292.53. THE AVERAGE ALLOTMENT PER PERSON INCREASED BY \$0.48 (0.38%) TO \$126.77.

COMPARING TO AUGUST 2011, AUGUST 2012 SUPPLEMENTAL NUTRITION ASSISTANCE HOUSEHOLDS INCREASED BY 738 (0.15%). PERSONS RECEIVING SUPPLEMENTAL NUTRITION ASSISTANCE DECREASED BY 1,182 (0.11%). TOTAL COUPON ISSUANCE DECREASED BY \$510,447 (0.36%). THE AVERAGE ALLOTMENT PER HOUSEHOLD DECREASED BY \$1.50 (0.51%). THE AVERAGE ALLOTMENT PER PERSON DECREASED BY \$0.33 (0.26%).

MEDICAL ASSISTANCE PROGRAM (MA) NEW TABLE INCLUDES PROP. 204 CATEGORIES

COMPARING TO JULY 2012, AUGUST 2012 TOTAL RECIPIENTS TOTAL RECIPIENTS INCREASED BY 5,552 (0.49%). SOBRA WOMEN AT 140% FPL INCREASED BY 322 (2.53%). SOBRA CHILDREN INCREASED BY 840 (1.49%). ADULTS W/O CHILD AT 100% DECREASED BY 1,397 (5.36%). FOSTER CARE INCREASED BY 131 (0.00%). 1931 AT 36% FPL INCREASED BY 4,108 (0.00%). EMERGENCY SERVICES INCREASED BY 1,791 (2.69%). INFANTS INCREASED BY 540 (1.18%). ADULT W/O CHILD AT 140% DECREASED BY 3,385 (4.04%). MEDICAL W/SPEND DOWN INCREASED BY 0 (100.00%). SOBRA WOMAN AT 100% DECREASED BY 21 (0.45%). SOBRA CHILD AT 100% INCREASED BY 2,010 (0.83%). TRANSITIONAL MEDICAL DECREASED BY 634 (1.38%). 1931 AT 100% INCREASED BY 1,374 (1.12%). YATI DECREASED BY 14 (4.08%). ALL OTHER CATEGORIES DECREASED BY 113 (0.40%).

COMPARING TO AUGUST 2011, AUGUST 2012 TOTAL RECIPIENTS TOTAL RECIPIENTS DECREASED BY 100,447 (8.17%). SOBRA WOMEN AT 140% FPL INCREASED BY 1,538 (13.37%). SOBRA CHILDREN DECREASED BY 12,761 (18.19%). ADULTS W/O CHILD AT 100% DECREASED BY 33,746 (57.79%). FOSTER CARE INCREASED BY 1,630 (12.26%). 1931 AT 36% FPL INCREASED BY 12,883 (3.53%). EMERGENCY SERVICES INCREASED BY 13,311 (24.18%). INFANTS INCREASED BY 122 (0.26%). ADULT W/O CHILD AT 140% DECREASED BY 83,117 (50.81%). MEDICAL W/SPEND DOWN DECREASED BY 2,252 (100.00%). SOBRA WOMAN AT 100% INCREASED BY 427 (10.02%). SOBRA CHILD AT 100% INCREASED BY 4,668 (1.94%). TRANSITIONAL MEDICAL INCREASED BY 2,313 (5.40%). 1931 AT 100% DECREASED BY 3,756 (2.95%). YATI DECREASED BY 1 (0.30%). ALL OTHER CATEGORIES DECREASED BY 1,706 (5.71%).

## TANF SUMMARY

### TABLES 1, 1A, 1B, & 1C: ARIZONA 1/

	AUGUST 2012							JULY 2012			CHANGE FROM AUGUST 2011		
	FAMILIES (CASES)	PERSONS (RECIPIENT)	ADULTS	CHILDREN	TOTAL PAYMENTS	AVERAGE PAYMENT/ CASE	AVERAGE PAYMENT/ RECIPIENT	FAMILIES (CASES)	PERSONS (RECIPIENT)	TOTAL PAYMENTS	FAMILIES (CASES)	PERSONS (RECIPIENT)	TOTAL PAYMENTS
	ARIZONA	18,286	42,199	12,031	30,168	3,783,818	206.92	89.67	657	1,933	117,424	1,545	4,406
REGION													
MARICOPA	11,651	27,491	7,717	19,774	2,412,334	207.05	87.75	443	1,306	79,528	1,609	4,407	312,550
NORTHERN	977	2,177	668	1,509	195,831	200.44	89.95	27	101	5,643	(15)	(98)	(6,327)
APACHE	35	98	27	71	8,172	233.49	83.39	(2)	2	(166)	2	20	1,543
COCONINO	63	143	39	104	12,172	193.21	85.12	(12)	(34)	(2,681)	14	19	1,591
MOHAVE	608	1,319	404	915	121,765	200.27	92.32	22	76	5,316	29	44	3,603
NAVAJO	271	617	198	419	53,722	198.24	87.07	19	57	3,174	(60)	(181)	(13,064)
CENTRAL	2,167	4,861	1,466	3,395	451,743	208.46	92.93	99	293	17,913	226	646	51,865
GILA	446	919	359	560	103,271	231.55	112.37	27	57	4,647	14	3	950
LA PAZ	58	138	36	102	11,599	199.98	84.05	3	6	423	(8)	(8)	312
PINAL	890	1,995	548	1,447	177,223	199.13	88.83	19	54	1,687	147	389	30,617
YAVAPAI	312	656	179	477	60,828	194.96	92.73	11	36	2,650	44	126	10,874
YUMA	461	1,153	344	809	98,822	214.36	85.71	39	140	8,506	29	136	9,112
SOUTHERN	3,491	7,670	2,180	5,490	723,910	207.36	94.38	88	233	14,340	(275)	(549)	(68,667)
COCHISE	358	737	181	556	72,085	201.35	97.81	15	29	2,161	30	89	6,313
GRAHAM	229	487	158	329	53,053	231.67	108.94	12	26	1,803	1	7	817
GREENLEE	15	35	9	26	3,126	208.40	89.31	0	(1)	233	6	14	1,107
P MA	2,775	6,144	1,771	4,373	571,719	206.02	93.05	54	164	8,895	(332)	(716)	(81,592)
SANTA CRUZ	114	267	61	206	23,927	209.89	89.61	7	15	1,248	20	57	4,688

1/EXCLUDES: PRIOR MONTH NET TOTALS OF 979 CASES; 2,553 RECIPIENTS; \$136,578.  
 GRANT DIVERSION TOTALS OF: 738 CASES; \$572,397.  
 ZERO PAY TOTALS OF 1,428 CASES; 4,479 RECIPIENTS.

RRP: 185 CASES; 270 RECIPIENTS; \$35,900.

1/INCLUDES: TANF CHILD ONLY: 9,343 CASES; 15,889 RECIPIENTS; \$1,825,328.

	CURRENT MO. CASES	CURRENT MO. RECIPIENT	CURRENT MO. DOLLARS	PRIOR MO. CASES	PRIOR MO. RECIPIENT	PRIOR MO. DOLLARS
PASQUA/YAQUI	229	652	\$68,957	10	32	\$1,400
WM APACHE	0	0	\$0	0	0	\$0
SALT RIVER	80	266	\$23,171	5	18	\$779
SAN CARLOS	481	997	\$115,966	30	71	\$3,519
HOPÍ	98	244	\$20,977	10	25	\$1,194
<b>TOTAL</b>	<b>888</b>	<b>2,159</b>	<b>\$229,071</b>	<b>55</b>	<b>146</b>	<b>\$6,892</b>

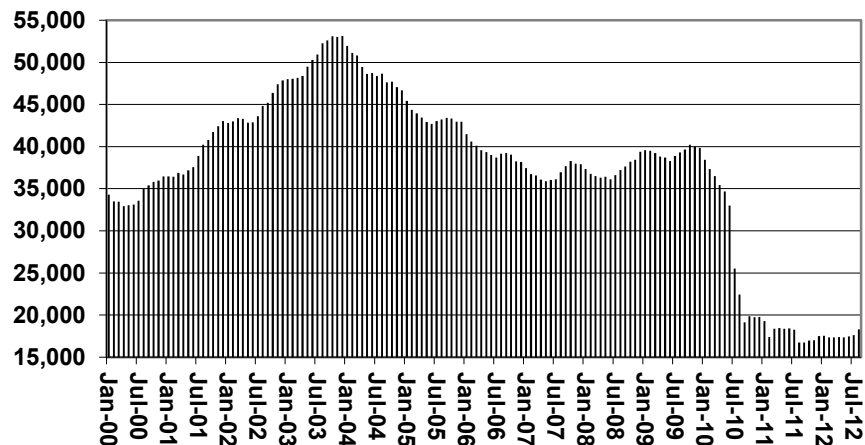
# TANF SUMMARY

TABLES 1, 1A, 1B, & 1C

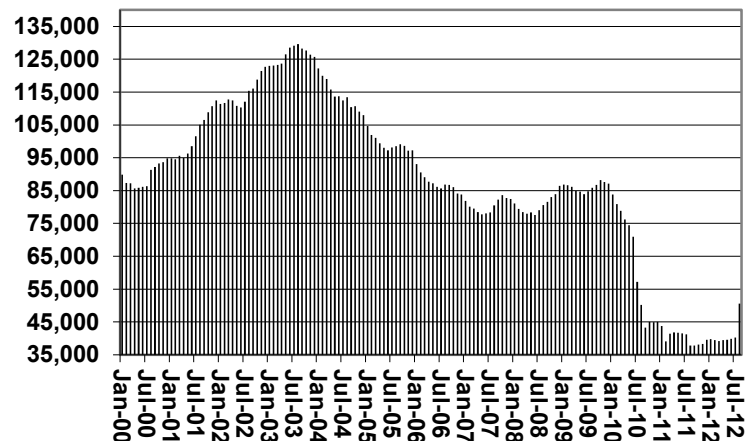
COMPARISON OF CASES, RECIPIENTS, PAYMENTS & AVERAGE PAYMENTS

FOR 2000, 2001, 2002, 2003, 2004, 2005, 2006, 2007, 2008, 2009, 2010, 2011, & 2012

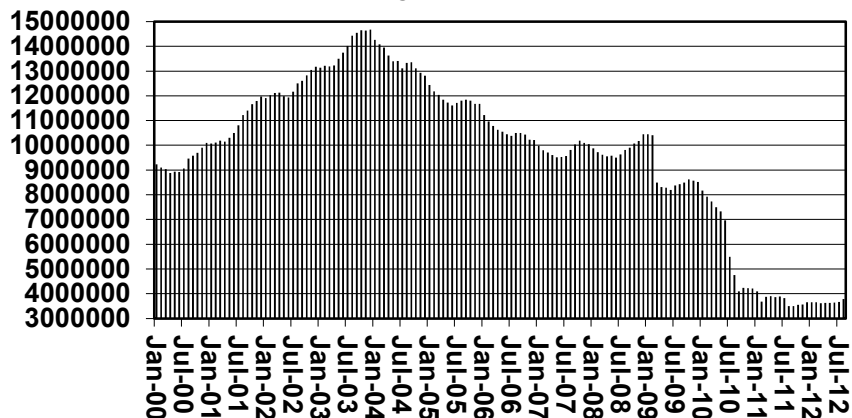
### Cases



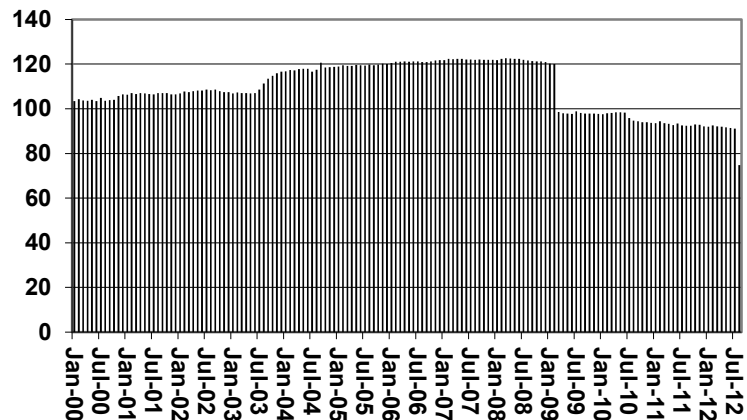
### Recipients



### Payments



### Average Payments Per Recipient



**TABLE 1**  
**CASH ASSISTANCE: ARIZONA 1/**

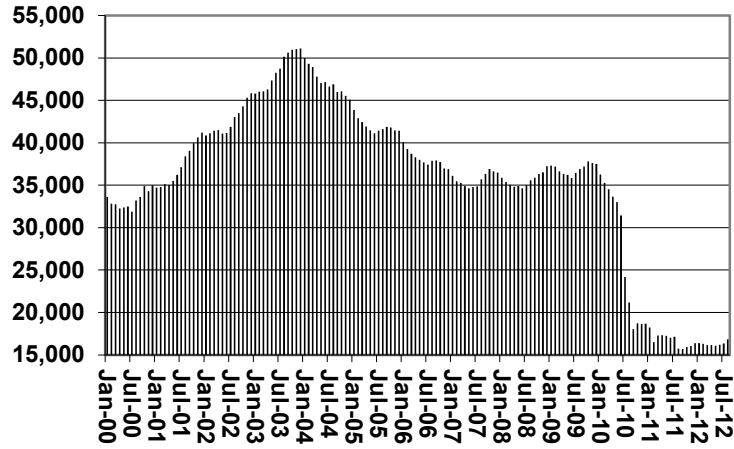
	AUGUST 2012							CHANGE FROM			AUGUST 2011			
	FAMILIES (CASES)	(RECIPIENT)	ADULTS	CHILDREN	TOTAL PAYMENTS	AVERAGE	AVERAGE	FAMILIES (CASES)	PERSONS (RECIPIENT)	TOTAL PAYMENTS	FAMILIES (CASES)	PERSONS (RECIPIENT)	TOTAL PAYMENTS	
						PAYMENT/ CASE	PAYMENT/ RECIPIENT							
ARIZONA	16,814	37,819	10,158	27,661	3,547,142	210.96	93.79	492	1,280	93,138	1,084	2,919	219,288	
REGION														
MARICOPA	10,744	24,747	6,591	18,156	2,274,901	211.74	91.93	333	840	63,582	1,297	3,345	272,585	
NORTHERN	899	1,953	564	1,389	182,759	203.29	93.58	26	91	5,396	(21)	(101)	(5,945)	
APACHE	30	84	21	63	7,073	235.77	84.20	(1)	5	(19)	1	21	1,555	
COCONINO	57	127	32	95	11,752	206.18	92.54	(10)	(28)	(2,100)	11	10	1,291	
MOHAVE	553	1,149	323	826	111,217	201.12	96.79	15	40	2,845	23	29	3,071	
NAVAJO	259	593	188	405	52,717	203.54	88.90	22	74	4,670	(56)	(161)	(11,862)	
CENTRAL	1,972	4,283	1,188	3,095	414,494	210.19	96.78	44	84	6,136	71	139	12,383	
GILA	387	727	247	480	86,648	223.90	119.19	16	11	1,321	(42)	(181)	(15,303)	
LA PAZ	51	120	29	91	10,835	212.45	90.29	2	8	737	(8)	(9)	(90)	
PINAL	819	1,791	459	1,332	167,141	204.08	93.32	26	65	4,078	121	329	27,776	
YAVAPAI	284	581	149	432	56,579	199.22	97.38	7	21	1,511	40	104	9,035	
YUMA	431	1,064	304	760	93,291	216.45	87.68	34	122	7,268	29	134	8,706	
SOUTHERN	3,199	6,836	1,815	5,021	674,988	211.00	98.74	48	122	9,245	(332)	(702)	(77,476)	
COCHISE	335	687	164	523	70,086	209.21	102.02	6	14	1,932	20	67	5,435	
GRAHAM	215	442	132	310	49,406	229.80	111.78	13	27	2,131	(6)	(18)	(1,879)	
GREENLEE	14	33	8	25	3,109	222.07	94.21	0	(1)	233	5	12	1,090	
PIMA	2,532	5,449	1,462	3,987	530,017	209.33	97.27	22	74	3,412	(365)	(789)	(85,554)	
SANTA CRUZ	103	225	49	176	22,370	217.18	99.42	7	8	1,537	14	26	3,432	
1/EXCLUDES:	PRIOR MONTH NET TOTALS OF: 361 CASES; 965 RECIPIENTS; \$86,874.							CURRENT	CURRENT	CURRENT MO.	PRIOR MO.	PRIOR	PRIOR	
	GRANT DIVERSION TOTALS OF: 738 CASES; \$572,397.							MO. CASES	MO. RECIPIENT	DOLLARS	CASES	MO. RECIPIENT	MO. DOLLARS	
	ZERO PAY TOTALS OF 1,421 CASES; 4,447 RECIPIENTS.													
							PASQUAYUQUI	220	614	\$65,542	8	25	\$1,227	
							WM APACHE	0	0	\$0	0	0	\$0	
							SALT RIVER	80	266	\$23,171	5	18	\$779	
							SAN CARLOS	423	809	\$98,153	23	48	\$2,388	
							HOPI	98	244	\$20,977	10	25	\$1,194	
CASES WITH GRANT UNDER \$100 (SEE TABLE 1B).							TOTAL	821	1,933	\$207,843	46	116	\$5,588	

# CHART 1

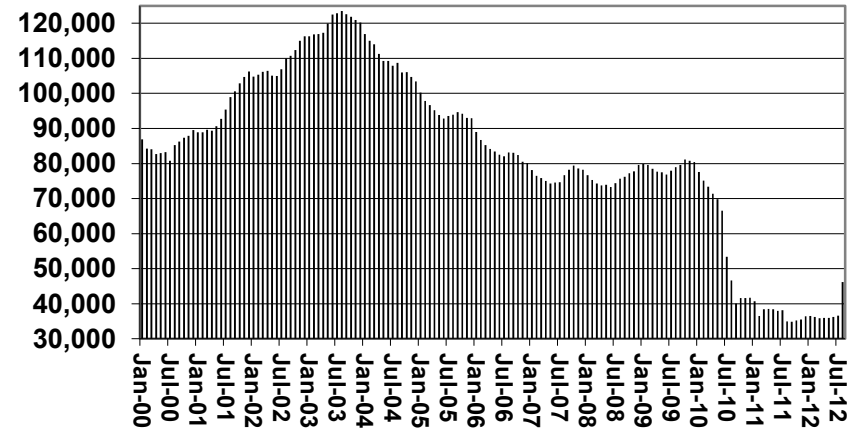
## CASH ASSISTANCE PROGRAM

### COMPARISON OF CASES, RECIPIENTS, PAYMENTS & AVERAGE PAYMENTS FOR 2000, 2001, 2002, 2003, 2004, 2005, 2006, 2007, 2008, 2009, 2010, 2011, & 2012

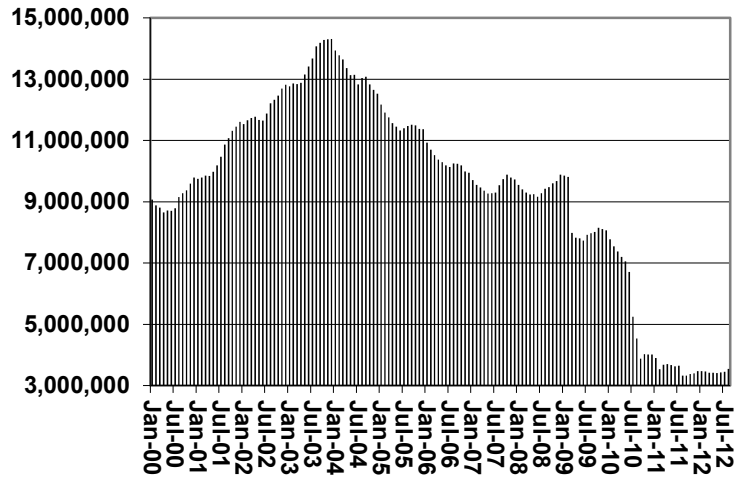
**Cases**



**Recipients**



**Payments**



**Average Payment Per Recipient**

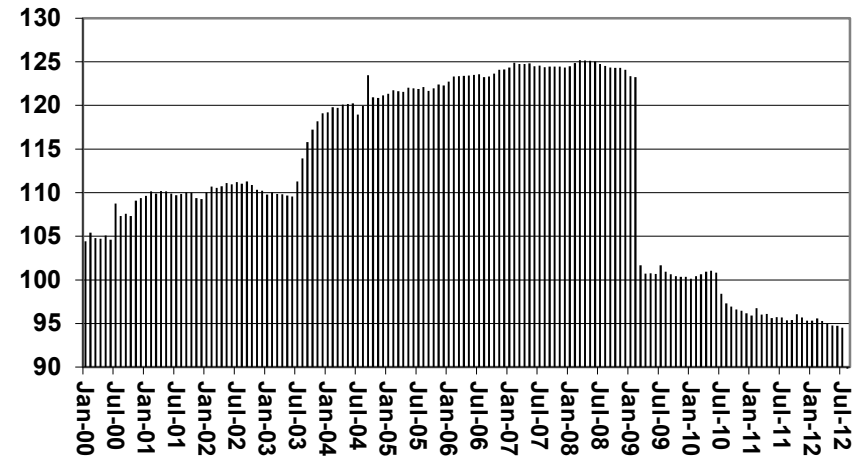


TABLE 1A  
CA-UP

CASH ASSISTANCE UNEMPLOYED PARENT PROGRAM: ARIZONA 1/

	AUGUST 2012							CHANGE FROM			AUGUST 2011		
	FAMILIES (CASES)	PERSONS (RECIP.)	ADULTS	CHILDREN	TOTAL PAYMENTS	AVERAGE PAYMENT/ CASE	AVERAGE PAYMENT/ RECIP.	JULY 2012			AUGUST 2011		
								FAMILIES (CASES)	PERSONS (RECIP.)	TOTAL PAYMENTS	FAMILIES (CASES)	PERSONS (RECIP.)	TOTAL PAYMENTS
ARIZONA	616	2,392	1,174	1,218	177,268	287.77	74.11	72	286	18,906	198	770	53,775
REGION													
MARICOPA	331	1,344	631	713	98,238	296.79	73.09	49	199	13,002	92	419	27,050
NORTHERN	34	135	69	66	9,935	292.21	73.59	0	4	201	(1)	(9)	(909)
APACHE	3	12	6	6	1,005	335.00	83.75	(1)	(1)	(103)	0	(2)	2
COCONINO	0	0	0	0	0	0.00	0.00	(2)	(10)	(609)	0	0	0
MOHAVE	30	118	59	59	8,769	292.30	74.31	8	37	2,570	3	7	366
NAVAJO	1	5	4	1	161	161.00	32.20	(5)	(22)	(1,657)	(4)	(14)	(1,277)
CENTRAL	113	400	215	185	31,066	274.92	77.67	5	11	939	67	215	18,206
GILA	54	180	108	72	16,169	299.43	1.66	11	40	3,329	53	176	15,958
LA PAZ	2	6	4	2	446	223.00	74.33	0	(3)	(241)	2	6	446
PINAL	30	112	54	58	7,209	240.30	64.37	(6)	(26)	(2,149)	12	33	1,802
YAVAPAI	12	44	19	25	3,093	257.75	70.30	5	18	1,156	9	33	2,297
YUMA	15	58	30	28	4,149	276.60	71.53	3	13	803	2	8	140
SOUTHERN	138	513	259	254	38,029	275.57	74.13	10	41	2,805	29	104	6,991
COCHISE	3	10	6	4	767	255.67	76.70	(1)	(4)	(335)	1	4	283
GRAHAM	12	40	24	16	3,540	0.00	0.00	(1)	(1)	(330)	10	34	2,984
GREENLEE	0	0	0	0	0	0.00	0.00	0	0	0	0	0	0
PIMA	121	450	226	224	32,767	270.80	72.82	13	49	3,748	16	53	2,769
SANTA CRUZ	2	13	3	10	955	477.50	0.00	(1)	(3)	(278)	2	13	955

1/EXCLUDES: PRIOR MONTH NET TOTALS OF: 60 CASES; 233 REC P ENTS; \$17,181.  
GRANT DIVERSION TOTALS OF: 0 CASES; \$0.  
ZERO PAY TOTALS OF 7 CASES; 32 REC P ENTS.

CASES WITH GRANT UNDER \$100 (SEE TABLE 1C).

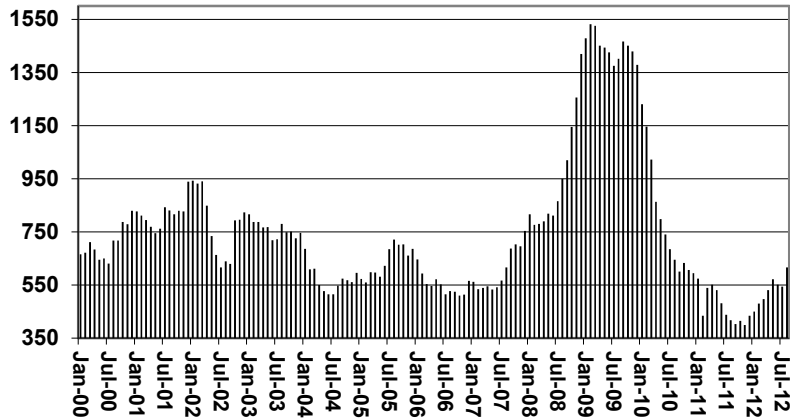
	CURRENT MO. CASES	CURRENT MO. RECIP.	CURRENT MO. DOLLARS	PRIOR MO. CASES	PRIOR MO. RECIP.	PRIOR MO. DOLLARS
PASQUAYQUI	9	38	\$3,415	2	7	\$173
WM APACHE	0	0	\$0	0	0	\$0
SALT RIVER	0	0	\$0	0	0	\$0
SAN CARLOS	58	188	\$17,813	7	23	\$1,131
HOPI	0	0	\$0	0	0	\$0
TOTAL	67	226	\$21,228	9	30	\$1,304

# CHART 1A

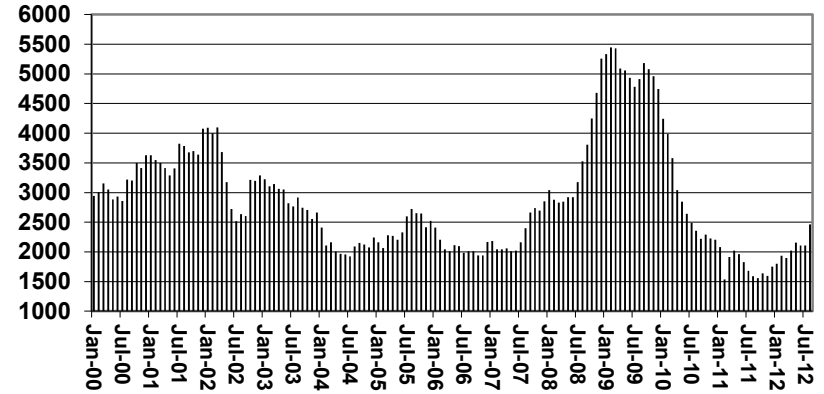
## CASH ASSISTANCE UNEMPLOYED PARENT PROGRAM

### COMPARISON OF CASES, RECIPIENTS, PAYMENTS & AVERAGE PAYMENTS FOR 2000, 2001, 2002, 2003, 2004, 2005, 2006, 2007, 2008, 2009, 2010, 2011, & 2012

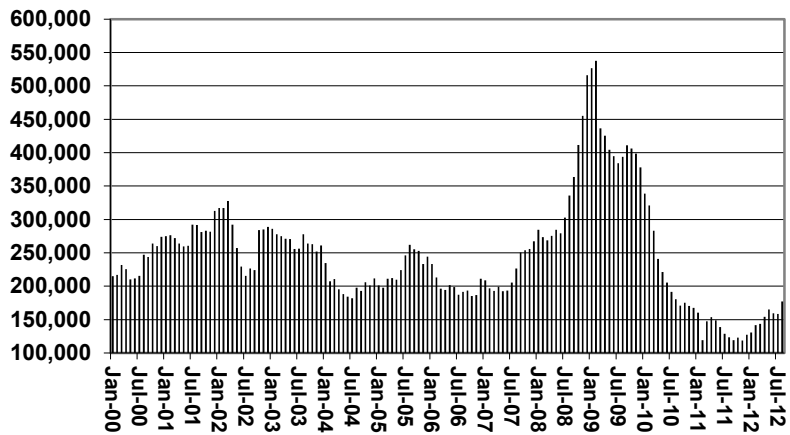
Cases



Recipients



Payments



Average Payment Per Recipient

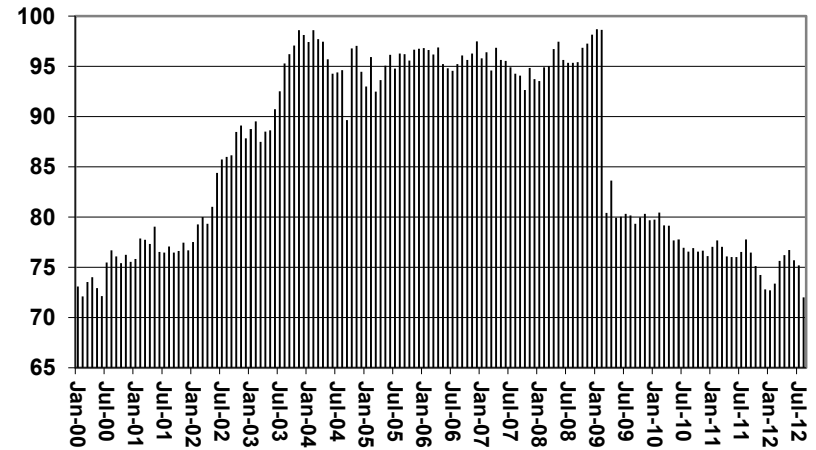




TABLE 1B 1/

CASH ASSISTANCE: ARIZONA  
 CASES WITH GRANT UNDER \$100

	AUGUST 2012							CHANGE FROM			AUGUST 2011		
	FAMILIES (CASES)	PERSONS (RECIP.)	ADULTS	CHILDREN	TOTAL PAYMENTS	AVERAGE PAYMENT/ CASE	AVERAGE PAYMENT/ RECIP.	FAMILIES (CASES)	PERSONS (RECIP.)	TOTAL PAYMENTS	FAMILIES (CASES)	PERSONS (RECIP.)	TOTAL PAYMENTS
ARIZONA	843	1,937	677	1,260	58,492	69.39	30.20	89	347	5,006	258	700	15,934
REGION													
MARICOPA	570	1,374	484	890	38,774	68.02	28.22	59	257	2,793	219	638	12,827
NORTHERN	43	86	33	53	3,069	71.37	35.69	0	3	(22)	7	12	510
APACHE	2	2	0	2	94	47.00	47.00	0	(2)	(44)	1	1	(14)
COCONINO	6	16	7	9	420	70.00	26.25	0	4	28	4	12	351
MOHAVE	24	49	20	29	1,711	71.29	34.92	(2)	(4)	(167)	2	5	98
NAVAJO	11	19	6	13	844	76.73	44.42	2	5	161	0	(6)	75
CENTRAL	80	170	59	111	6,017	75.21	35.39	0	19	(15)	7	10	948
GILA	5	12	4	8	454	90.80	37.83	0	6	(3)	3	8	295
LA PAZ	5	12	3	9	318	63.60	26.50	1	1	(73)	(2)	(5)	(44)
PINAL	40	89	33	56	2,792	69.80	31.37	(2)	12	(323)	14	29	974
YAVAPAI	16	31	11	20	1,156	72.25	37.29	0	0	34	(5)	(11)	(458)
YUMA	14	26	8	18	1,297	92.64	49.88	1	0	350	(3)	(11)	181
SOUTHERN	150	307	101	206	10,632	70.88	34.63	30	68	2,250	25	40	1,649
COCHISE	20	40	11	29	1,232	61.60	30.80	10	19	564	9	18	595
GRAHAM	1	2	1	1	69	69.00	34.50	0	0	2	(4)	(12)	(326)
GREENLEE	1	2	1	1	17	17.00	8.50	0	0	0	1	2	17
PIMA	119	234	79	155	8,712	73.21	37.23	19	39	1,695	15	14	1,062
SANTA CRUZ	9	29	9	20	602	66.89	20.76	1	10	(11)	4	18	301

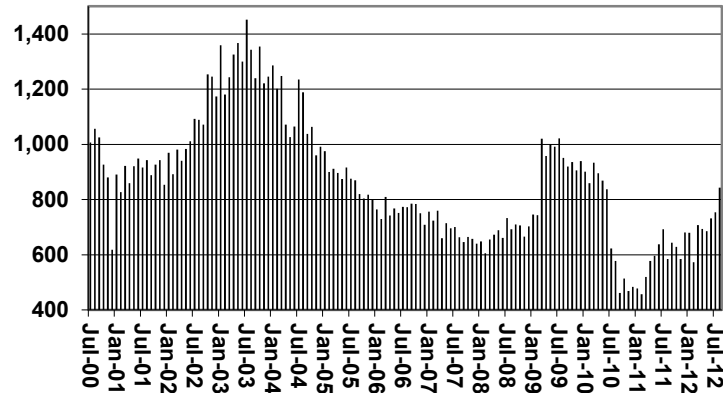
EXCLUDES: PRIOR MONTH NET TOTALS OF 516 CASES; 1202 RECIPIENTS; \$30,300.

# CHART 1B

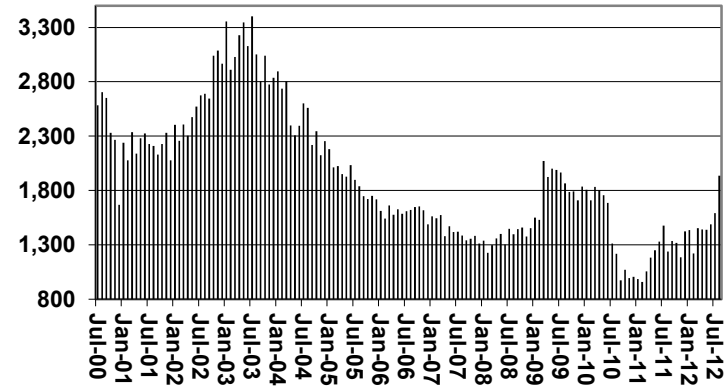
## CASH ASSISTANCE PROGRAM CASES WITH GRANT UNDER \$100

FOR 2000, 2001, 2002, 2003, 2004, 2005, 2006, 2007, 2008, 2009, 2010, 2011, & 2012

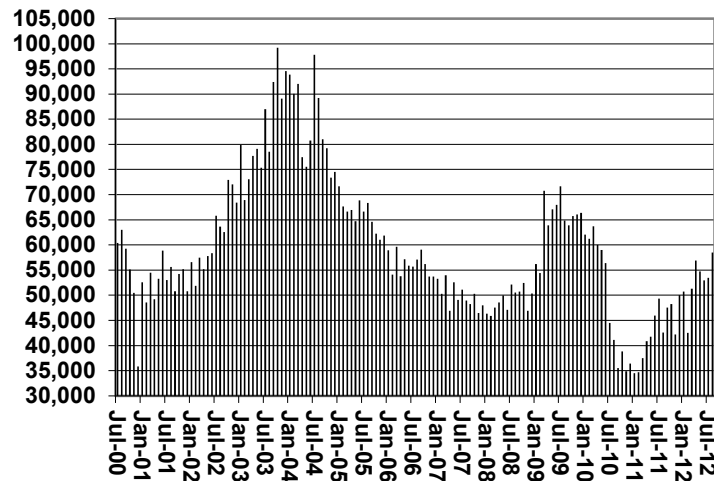
Cases



Recipients



Payments



Average Payment Per Recipient

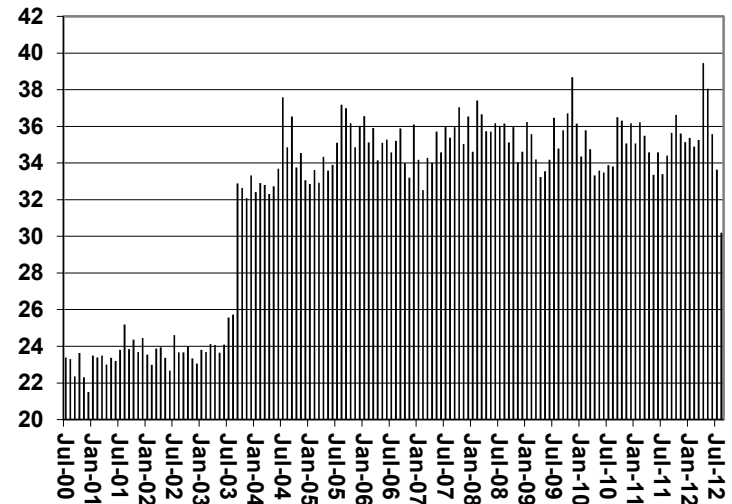


TABLE 1C 1/

CASH ASSISTANCE UNEMPLOYED PARENT PROGRAM: ARIZONA  
 CASES WITH GRANT UNDER \$100

	AUGUST 2012							CHANGE FROM			AUGUST 2011		
	FAMILIES (CASES)	PERSONS (RECIP.)	ADULTS	CHILDREN	TOTAL PAYMENTS	AVERAGE PAYMENT/ CASE	AVERAGE PAYMENT/ RECIP.	JULY 2012			AUGUST 2011		
								FAMILIES (CASES)	PERSONS (RECIP.)	TOTAL PAYMENTS	FAMILIES (CASES)	PERSONS (RECIP.)	TOTAL PAYMENTS
ARIZONA	13	51	22	29	916	70.46	17.96	4	20	374	5	17	424
REGION													
MARICOPA	6	26	11	15	421	70.17	16.19	2	10	151	1	5	88
NORTHERN	1	3	2	1	68	68.00	22.67	1	3	68	0	0	17
APACHE	0	0	0	0	0	0.00	0.00	0	0	0	0	0	0
COCONINO	0	0	0	0	0	0.00	0.00	0	0	0	(1)	(3)	(51)
MOHAVE	1	3	2	1	68	68.00	22.67	1	3	68	1	3	68
NAVAJO	0	0	0	0	0	0.00	0.00	0	0	0	0	0	0
CENTRAL	2	8	4	4	166	83.00	20.75	1	5	115	1	3	150
GILA	0	0	0	0	0	0.00	0.00	0	0	0	0	0	0
LA PAZ	0	0	0	0	0	0.00	0.00	0	0	0	0	0	0
PINAL	1	3	2	1	81	81.00	27.00	1	3	81	0	(2)	65
YAVAPAI	0	0	0	0	0	0.00	0.00	(1)	(3)	(51)	0	0	0
YUMA	1	5	2	3	85	85.00	17.00	1	5	85	1	5	85
SOUTHERN	4	14	5	9	261	65.25	18.64	0	2	40	3	9	169
COCHISE	0	0	0	0	0	0.00	0.00	0	0	0	0	0	0
GRAHAM	1	3	1	2	38	38.00	12.67	0	0	0	1	3	38
GREENLEE	0	0	0	0	0	0.00	0.00	0	0	0	0	0	0
PIMA	3	11	4	7	223	74.33	20.27	0	2	40	2	6	131
SANTA CRUZ	0	0	0	0	0	0.00	0.00	0	0	0	0	0	0

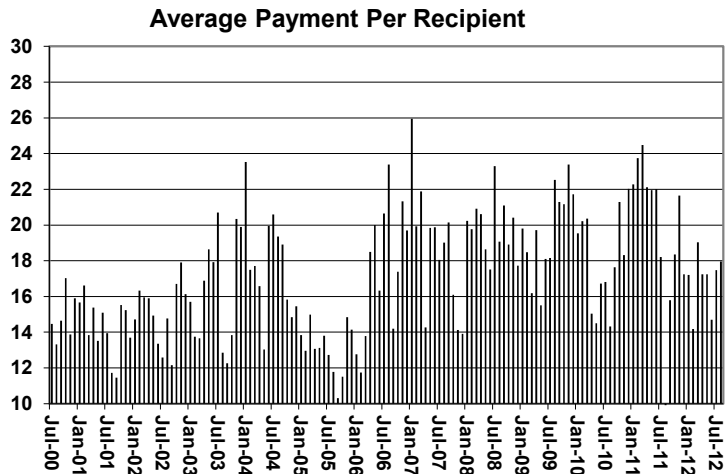
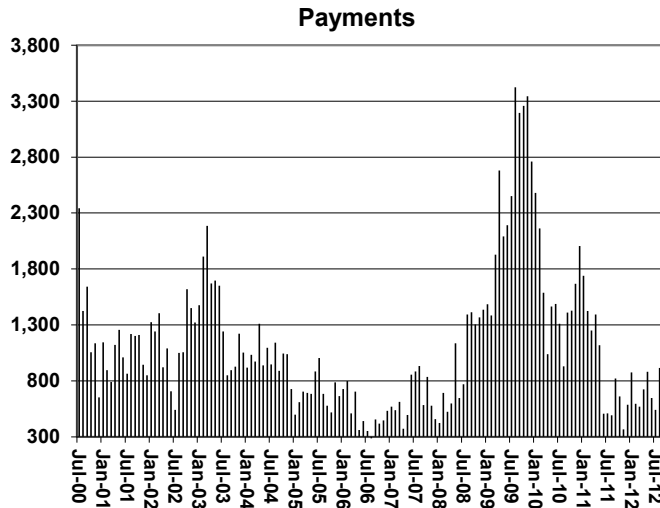
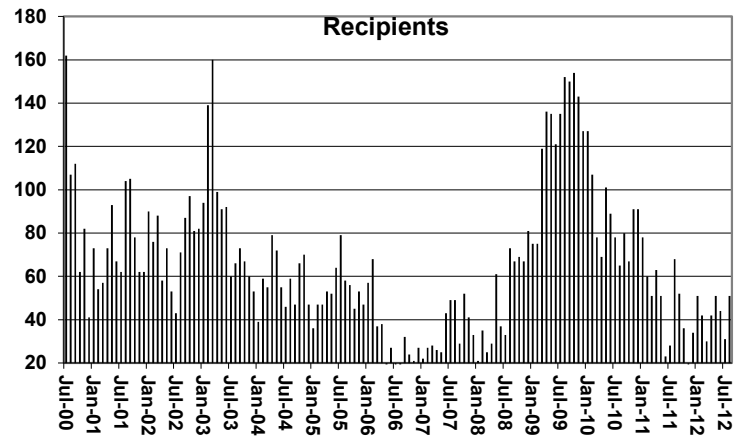
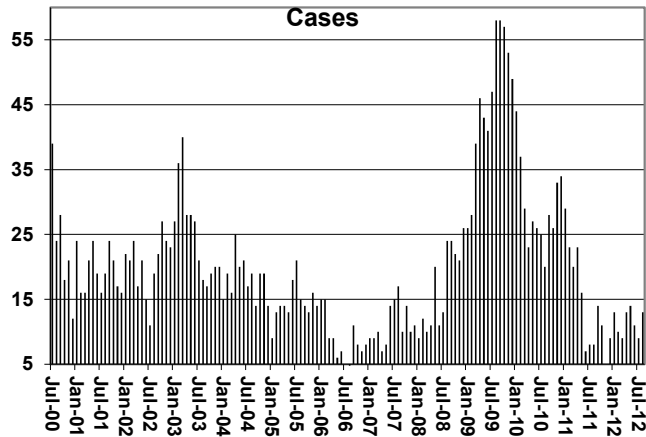
EXCLUDES: PRIOR MONTH NET TOTALS OF 42 CASES; 153 RECIPIENTS; \$2,223.

# CHART 1C

## CASH ASSISTANCE UNEMPLOYED PARENT PROGRAM

### CASES WITH GRANT UNDER \$100

FOR 2000, 2001, 2002, 2003, 2004, 2005, 2006, 2007, 2008, 2009, 2010, 2011, & 2012



**TABLE 4**  
**TUBERCULOSIS CONTROL: ARIZONA 1/**

	CHANGE FROM										
	AUGUST 2012					JULY 2012			AUGUST 2011		
	NUMBER OF CASES	PERSONS (RECIP.)	TOTAL PAYMENTS	AVERAGE PAYMENT/ CASE	AVERAGE PAYMENT/ RECIP.	NUMBER OF CASES	PERSONS (RECIP.)	TOTAL PAYMENTS	NUMBER OF CASES	PERSONS (RECIP.)	TOTAL PAYMENTS
ARIZONA	2	2	190	95.00	95.00	0	0	(156)	(4)	(4)	(649)
REGION											
MARICOPA	2	2	190	95.00	95.00	0	0	(156)	(4)	(4)	(649)
NORTHERN	0	0	0	0.00	0.00	0	0	0	0	0	0
APACHE	0	0	0	0.00	0.00	0	0	0	0	0	0
COCONINO	0	0	0	0.00	0.00	0	0	0	0	0	0
MOHAVE	0	0	0	0.00	0.00	0	0	0	0	0	0
NAVAJO	0	0	0	0.00	0.00	0	0	0	0	0	0
CENTRAL	0	0	0	0.00	0.00	0	0	0	0	0	0
GILA	0	0	0	0.00	0.00	0	0	0	0	0	0
LA PAZ	0	0	0	0.00	0.00	0	0	0	0	0	0
PINAL	0	0	0	0.00	0.00	0	0	0	0	0	0
YAVAPAI	0	0	0	0.00	0.00	0	0	0	0	0	0
YUMA	0	0	0	0.00	0.00	0	0	0	0	0	0
SOUTHERN	0	0	0	0.00	0.00	0	0	0	0	0	0
COCHISE	0	0	0	0.00	0.00	0	0	0	0	0	0
GRAHAM	0	0	0	0.00	0.00	0	0	0	0	0	0
GREENLEE	0	0	0	0.00	0.00	0	0	0	0	0	0
PIMA	0	0	0	0.00	0.00	0	0	0	0	0	0
SANTA CRUZ	0	0	0	0.00	0.00	0	0	0	0	0	0

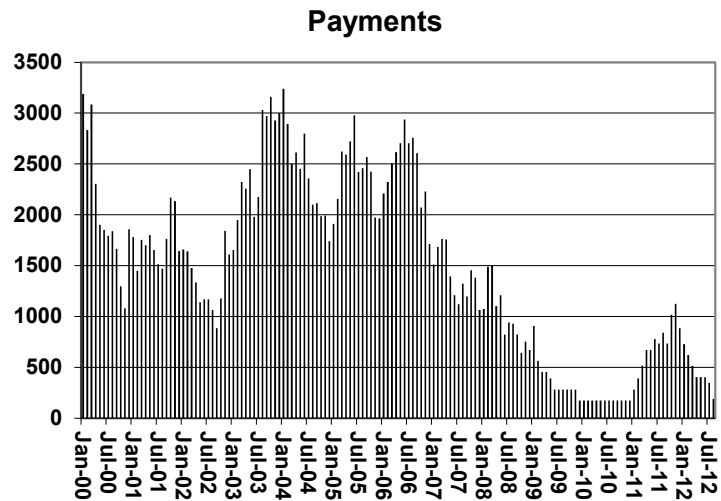
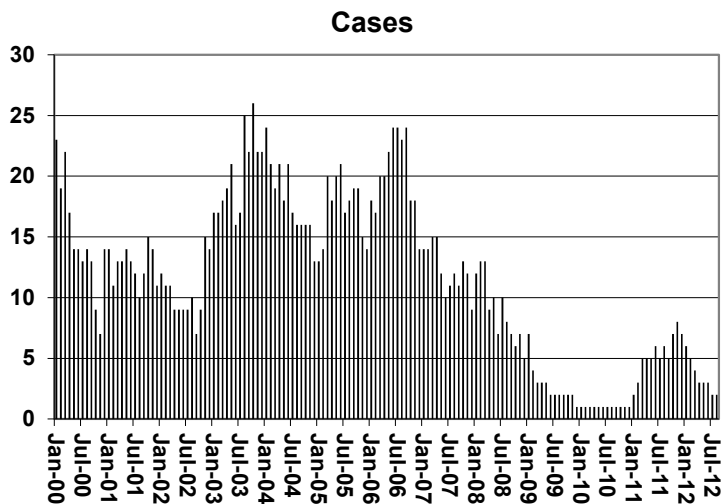
1/EXCLUDES: PRIOR MONTH NET TOTALS OF : 0 CASES; 0 RECIPIENTS; \$0.

# CHART 4

## TUBERCULOSIS CONTROL PROGRAM

### COMPARISON OF CASES, PAYMENTS & AVERAGE PAYMENTS

FOR 2000, 2001, 2002, 2003, 2004, 2005, 2006, 2007, 2008, 2009, 2010, 2011, & 2012



### Average Payment Per Case

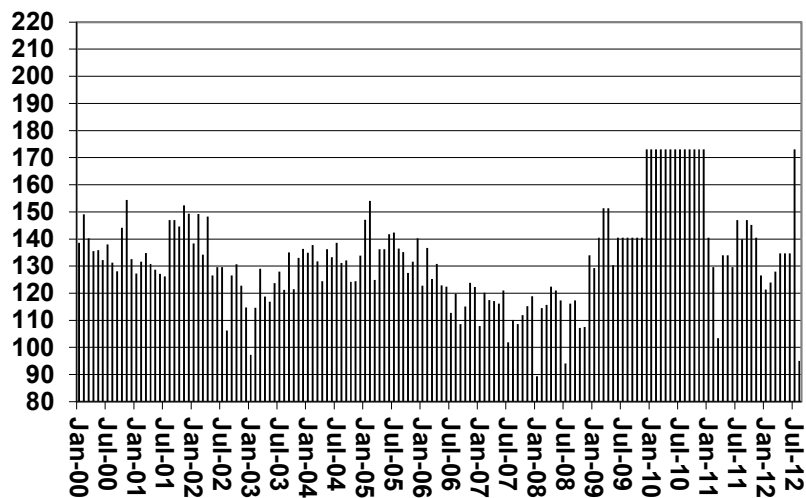


TABLE 6

SUPPLEMENTAL NUTRITION ASSISTANCE PROGRAM: ARIZONA 1/

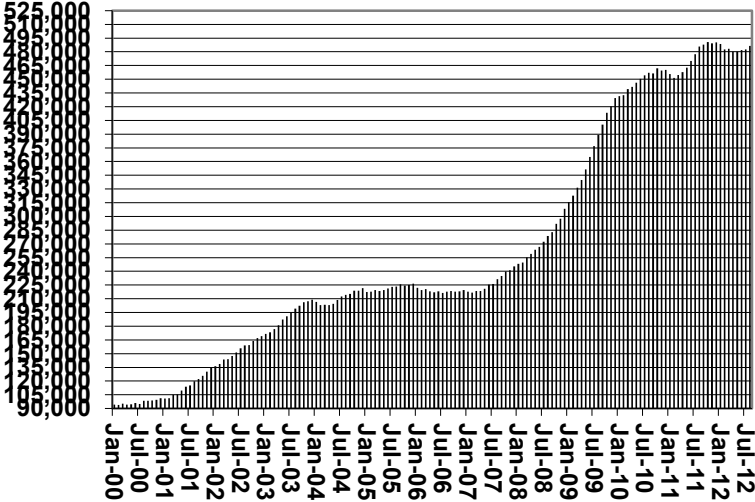
	CHANGE FROM												
	AUGUST 2012				JULY 2012			AUGUST 2011					
	HOUSEHOLDS	PERSONS	ADULTS	CHILDREN	TOTAL PAYMENTS ISSUANCE	AVERAGE PAYMT./ HOUSEHOLD	AVERAGE PAYMT./ PERSON	HOUSEHOLDS	PERSONS	TOTAL PAYMENTS ISSUANCE	HOUSEHOLDS	PERSONS	TOTAL PAYMENTS ISSUANCE
ARIZONA	486,306	1,127,702	576,557	551,147	142,260,103	292.53	126.15	3,821	8,095	865,299	738	4,369	(510,447)
REGION													
MARICOPA	263,534	616,608	293,618	322,990	78,695,826	298.62	127.63	2,865	5,806	659,020	3,344	9,985	781,172
NORTHERN	56,365	134,688	76,343	58,346	16,783,635	297.77	124.61	254	533	10,073	670	(836)	(38,630)
APACHE	10,852	29,070	16,095	12,975	3,630,616	334.56	124.89	60	18	524	263	(42)	39,058
COCONINO	10,009	24,093	13,012	11,081	2,986,749	298.41	123.97	(7)	(16)	(33,456)	8	(754)	(58,688)
MOHAVE	21,382	45,380	27,280	18,100	5,655,949	264.52	124.64	117	276	17,776	191	107	(28,087)
NAVAJO	14,122	36,145	19,956	16,190	4,510,321	319.38	124.78	84	255	25,229	208	(147)	9,087
CENTRAL	64,740	154,645	83,804	70,843	18,945,256	292.64	122.51	304	760	108,002	(4)	256	(66,314)
GILA	6,064	13,375	7,725	5,651	1,731,777	285.58	129.48	(34)	(91)	(20,188)	(182)	(336)	(37,865)
LA PAZ	2,062	4,256	2,464	1,792	546,798	265.18	128.48	36	44	5,850	(8)	(38)	(4,282)
PINAL	23,588	59,159	30,406	28,753	7,370,972	312.49	124.60	108	310	48,901	91	792	3,912
YAVAPAI	15,713	31,559	19,038	12,522	3,863,793	245.90	122.43	(76)	(224)	(36,565)	132	(99)	(40,568)
YUMA	17,313	46,296	24,171	22,125	5,431,916	313.75	117.33	270	721	110,004	(37)	(63)	12,489
SOUTHERN	101,667	221,761	122,792	98,968	27,835,386	273.79	125.52	398	996	88,204	(3,272)	(5,036)	(1,186,675)
COCHISE	11,116	24,360	13,903	10,457	2,916,936	262.41	119.74	121	330	28,319	2	308	(38,970)
GRAHAM	3,369	7,824	4,282	3,542	964,069	286.16	123.22	(26)	(42)	(6,844)	(246)	(424)	(86,542)
GREENLEE	499	1,053	612	441	136,055	272.66	129.21	(2)	(31)	(2,012)	(24)	(83)	(11,050)
PIMA	81,822	175,597	97,303	78,293	22,282,159	272.32	126.89	258	636	53,720	(3,163)	(5,207)	(1,085,002)
SANTA CRUZ	4,861	12,927	6,692	6,235	1,536,167	316.02	118.83	47	103	15,021	159	370	34,889

1/EXCLUDES: PRIOR MONTH NET TOTALS OF : 7,751 CASES; 20,753 RECIPIENTS; \$1,175,117.  
 AGED CANCELATIONS: 11,781 CASES; 15,821 RECIPIENTS; \$547,632.  
 SNAP CONVERSIONS: 0 CASES; 0 RECIPIENTS; \$0.  
 SNAP CHILD ONLY: 62,608 CASES; 148,698 RECIPIENTS; \$22,512,744.  
 SNAP ZERO PAY: 5,676 CASES; 21,467 RECIPIENTS.

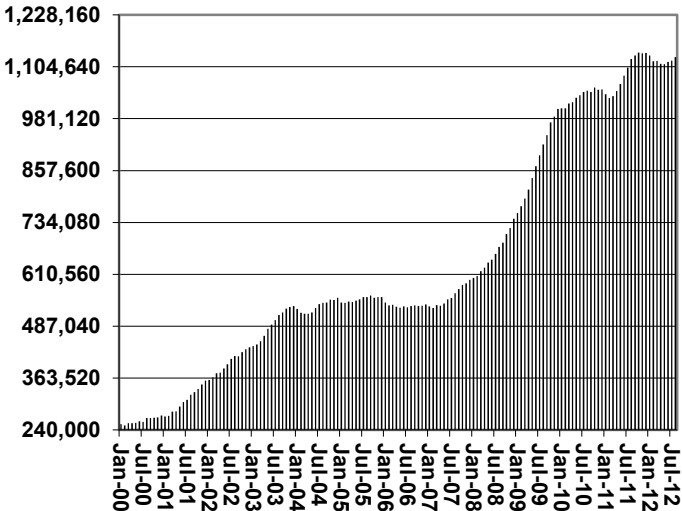
# CHART 6

## SUPPLEMENTAL NUTRITION ASSISTANCE PROGRAM (SNAP) COMPARISON OF HOUSEHOLDS, RECIPIENTS, PAYMENTS & AVERAGE PAYMENTS FOR 2000, 2001, 2002, 2003, 2004, 2005, 2006, 2007, 2008, 2009, 2010, 2011, & 2012

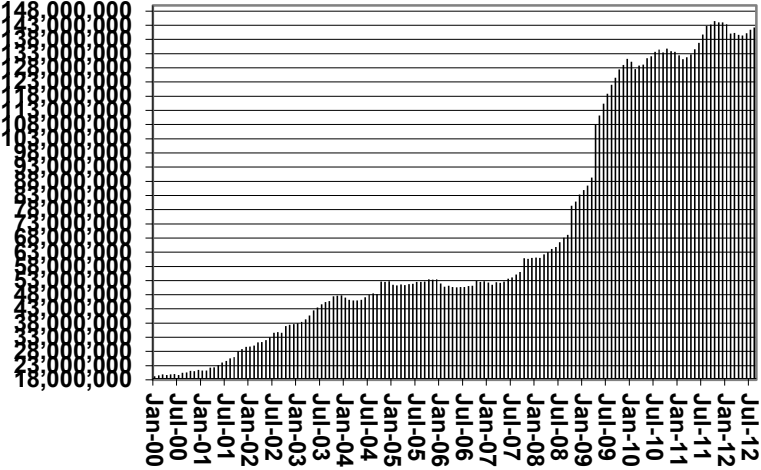
**Households**



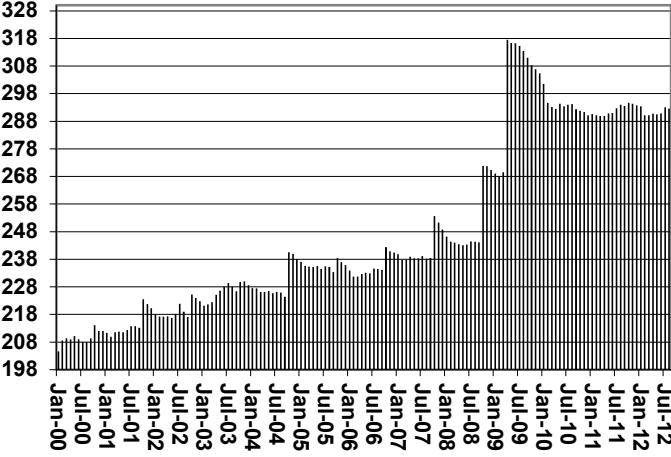
**Recipients**



**Payments**



**Average Payment Per Household**





**TABLE 7A**  
**MEDICAL ASSISTANCE PROGRAM**  
**RECIPIENTS**

**AUGUST 2012**

	SOBRA WOMAN 133% FPL	SOBRA CHILD	ADULT W/O CHILD 100% FPL	FOSTER CARE	1931 36% FPL	FEDERAL EMERGENCY SERVICES	INFANTS	ADULT W/O CHILD 40% FPL	MEDICAL W/SPEND DOWN	SOBRA WOMAN 100% FPL	SOBRA CHILD 100% FPL	TRANSITIONAL MEDICAL T1 - T4	1931 100% FPL	YATI	OTHER	TOTAL CASES
ARIZONA	13,042	57,397	24,646	14,928	377,588	68,361	46,309	80,464	0	4,688	244,928	45,153	123,555	329	28,156	1,129,544
REGION																
MARICOPA	7,448	32,996	12,068	8,388	212,615	56,002	28,366	39,209	0	2,598	147,324	24,451	64,954	182	14,785	651,386
NORTHERN	1,331	5,533	2,819	704	48,022	1,140	4,353	12,993	0	508	23,166	5,163	14,225	17	2,866	122,840
APACHE	215	1,182	387	46	12,083	90	870	3,256	0	97	4,050	887	2,522	1	409	26,095
COCONINO	301	990	502	133	8,807	467	972	2,034	0	113	4,773	1,114	2,816	8	419	23,449
MOHAVE	456	1,805	1,296	362	12,935	366	1,305	3,974	0	160	8,655	1,832	5,195	6	1,541	39,888
NAVAJO	359	1,556	634	163	14,197	217	1,206	3,729	0	138	5,688	1,330	3,692	2	497	33,408
CENTRAL	1,897	7,970	3,616	1,686	49,502	4,179	5,914	10,656	0	740	30,872	6,402	18,750	39	4,288	146,511
GILA	129	516	328	114	4,877	113	487	1,401	0	51	1,965	461	1,253	3	326	12,024
LA PAZ	43	224	125	26	1,401	120	149	373	0	25	696	114	372	0	168	3,836
PINAL	678	3,380	1,025	659	21,238	1,312	2,255	4,092	0	260	11,451	2,330	6,354	17	1,325	56,376
YAVAPAI	458	1,591	1,120	561	8,331	1,223	1,072	2,353	0	148	6,362	1,553	3,774	15	1,153	29,714
YUMA	589	2,259	1,018	326	13,655	1,411	1,951	2,437	0	256	10,398	1,944	6,997	4	1,316	44,561
SOUTHERN	2,366	10,898	6,143	4,150	67,449	7,040	7,676	17,606	0	842	43,566	9,137	25,626	91	6,217	208,807
COCHISE	223	1,004	789	256	7,195	439	731	1,745	0	73	4,550	968	2,828	6	861	21,668
GRAHAM	106	392	206	91	2,820	30	309	699	0	34	1,329	418	837	0	164	7,435
GREENLEE	17	44	38	10	463	5	52	109	0	6	176	43	71	1	30	1,065
P MA	1,893	8,891	4,673	3,752	53,143	6,146	6,154	14,267	0	669	34,449	7,196	19,882	84	4,682	165,881
SANTA CRUZ	127	567	437	41	3,828	420	430	786	0	60	3,062	512	2,008	0	480	12,758

**TABLE 7B**  
**MEDICAL ASSISTANCE PROGRAM**  
**RECIPIENTS**

**CHANGE FROM**

JULY 2012

	SOBRA WOMAN 133% FPL	SOBRA CHILD	ADULT W/O CHILD 100% FPL	FOSTER CARE	1931 36% FPL	FEDERAL EMERGENCY SERVICES	INFANTS	ADULT W/O CHILD 40% FPL	MEDICAL W/SPEND DOWN	SOBRA WOMAN 100% FPL	SOBRA CHILD 100% FPL	TRANSITIONAL MEDICAL T1 - T4	1931 100% FPL	YATI	OTHER	TOTAL CASES
ARIZONA	322	840	(1,397)	131	4,108	1,791	540	(3,385)	0	(21)	2,010	(634)	1,374	(14)	(113)	5,552
REGION																
MARICOPA	238	482	(687)	71	2,825	1,515	351	(1,762)	0	4	1,162	(2)	899	(3)	(57)	5,036
NORTHERN	8	(34)	(187)	3	172	31	(1)	(583)	0	(11)	309	(23)	157	(2)	(18)	(179)
APACHE	2	(34)	(31)	2	(14)	7	10	(126)	0	12	61	69	48	0	(2)	4
COCONINO	(5)	(8)	(37)	(1)	(90)	28	(2)	(127)	0	(6)	110	(60)	53	(1)	0	(146)
MOHAVE	(8)	24	(72)	0	157	(4)	(23)	(155)	0	(5)	100	(7)	50	(1)	(5)	51
NAVAJO	19	(16)	(47)	2	119	0	14	(175)	0	(12)	38	(25)	6	0	(11)	(88)
CENTRAL	(12)	148	(193)	1	467	112	100	(376)	0	(3)	271	(329)	145	(7)	7	331
GILA	(14)	13	(8)	2	(11)	4	25	(55)	0	(1)	(1)	(35)	(9)	0	(4)	(94)
LA PAZ	(3)	12	(1)	(3)	(44)	5	6	(19)	0	2	9	14	12	0	3	(7)
PINAL	1	28	(76)	17	101	(8)	41	(152)	0	(12)	203	(131)	23	2	(12)	25
YAVAPAI	2	47	(52)	(13)	65	37	5	(95)	0	11	(8)	6	(55)	(8)	4	(54)
YUMA	2	48	(56)	(2)	356	74	23	(55)	0	(3)	68	(183)	174	(1)	16	461
SOUTHERN	88	244	(330)	56	644	133	90	(664)	0	(11)	268	(280)	173	(2)	(45)	364
COCHISE	7	(5)	(54)	(1)	42	13	(6)	(49)	0	(3)	51	18	13	0	(7)	19
GRAHAM	3	16	2	5	63	1	(4)	(29)	0	(5)	3	(45)	18	(1)	2	29
GREENLEE	4	(11)	1	0	(14)	1	(5)	(13)	0	2	(2)	4	(3)	0	0	(36)
P MA	71	234	(259)	51	409	109	99	(545)	0	(11)	178	(166)	96	(1)	(41)	224
SANTA CRUZ	3	10	(20)	1	144	9	6	(28)	0	6	38	(91)	49	0	1	128

**TABLE 7C**  
**MEDICAL ASSISTANCE PROGRAM**  
**RECIPIENTS**

**CHANGE FROM**  
**AUGUST 2011**

	SOBRA WOMAN 133% FPL	SOBRA CHILD	ADULT W/O CHILD 100% FPL	FOSTER CARE	1931 36% FPL	FEDERAL EMERGENCY SERVICES	INFANTS	ADULT W/O CHILD 40% FPL	MEDICAL W/SPEND DOWN	SOBRA WOMAN 100% FPL	SOBRA CHILD 100% FPL	TRANSITIONAL MEDICAL T1 - T4	3E 1931 100% FPL	YATI	OTHER	TOTAL CASES
ARIZONA	1,538	(12,761)	(33,746)	1,630	12,883	13,311	122	(83,117)	(2,252)	427	4,668	2,313	(3,756)	(1)	(1,706)	(100,447)
REGION																
MARICOPA	994	(7,006)	(16,766)	1,146	8,639	12,543	929	(44,266)	(1,167)	289	5,618	1,826	(930)	2	(732)	(38,881)
NORTHERN	63	(2,166)	(4,120)	26	1,854	144	(351)	(11,544)	(367)	(34)	(770)	389	(951)	0	(265)	(18,092)
APACHE	1	(379)	(615)	9	127	19	(32)	(2,423)	(76)	1	(172)	10	(205)	1	(22)	(3,756)
COCONINO	24	(491)	(885)	(3)	132	93	(107)	(2,338)	(42)	(14)	(214)	114	(303)	(6)	(45)	(4,085)
MOHAVE	12	(475)	(1,555)	(1)	700	9	(134)	(3,609)	(181)	(47)	(172)	139	(236)	4	(103)	(5,649)
NAVAJO	26	(821)	(1,065)	21	895	23	(78)	(3,174)	(68)	26	(212)	126	(207)	1	(95)	(4,602)
CENTRAL	169	(1,342)	(5,174)	119	1,916	368	(116)	(10,445)	(285)	143	150	17	(841)	2	(237)	(15,556)
GILA	19	(83)	(356)	14	(65)	9	3	(1,083)	(38)	10	12	0	(100)	1	(18)	(1,675)
LA PAZ	9	(15)	(116)	4	10	(11)	3	(363)	(4)	11	25	(1)	(27)	0	0	(475)
PINAL	103	(658)	(1,592)	49	1,120	114	(39)	(4,287)	(82)	43	332	116	(76)	2	(47)	(4,902)
YAVAPAI	51	(164)	(1,389)	36	252	155	(104)	(2,420)	(80)	30	13	(85)	(396)	(2)	(109)	(4,212)
YUMA	(13)	(422)	(1,721)	16	599	101	21	(2,292)	(81)	49	(232)	(13)	(242)	1	(63)	(4,292)
SOUTHERN	312	(2,247)	(7,686)	339	474	256	(340)	(16,862)	(433)	29	(330)	81	(1,034)	(5)	(472)	(27,918)
COCHISE	2	(320)	(872)	13	92	27	(67)	(1,366)	(60)	(21)	51	116	(21)	0	(73)	(2,499)
GRAHAM	4	(64)	(244)	16	(94)	3	(55)	(720)	(24)	1	(80)	54	(37)	(1)	(13)	(1,254)
GREENLEE	7	(5)	(23)	2	(7)	2	(2)	(115)	(6)	0	(64)	17	(36)	1	(7)	(236)
P MA	282	(1,760)	(6,141)	302	234	203	(213)	(14,298)	(329)	39	(199)	(70)	(898)	(5)	(367)	(23,220)
SANTA CRUZ	17	(98)	(406)	6	249	21	(3)	(363)	(14)	10	(38)	(36)	(42)	0	(12)	(709)

# CHART 7

## MEDICAL ASSISTANCE PROGRAM

### COMPARISON OF RECIPIENTS

FOR 2000, 2001, 2002, 2003, 2004, 2005, 2006, 2007, 2008, 2009, 2010, 2011, & 2012

Total Recipients

