



DEPARTMENT OF ECONOMIC SECURITY

Your Partner For A Stronger Arizona

State of Arizona

Department of Economic Security

Family Assistance Administration

Statistical Bulletin

September, 2012

Phone: (602) 542-3678

<http://www.azdes.gov/appreports.aspx>

**** STATISTICAL BULLETIN ****
ARIZONA DEPARTMENT OF ECONOMIC SECURITY
FAMILY ASSISTANCE ADMINISTRATION
BOX 6123, PHOENIX, ARIZONA 85005
PHONE (602) 542-3678

SEPTEMBER 2012

THIS ISSUE OF THE STATISTICAL BULLETIN COMPARES SEPTEMBER 2012 DATA FOR EACH OF THE INDICATED PROGRAMS WITH THE INFORMATION FOR AUGUST 2012 AND SEPTEMBER 2011. STATEWIDE SUMMARIES OF ACTIVITY WITHIN EACH OF THE SPECIFIC PROGRAMS FOR THIS REPORT PERIOD ARE DISCUSSED BELOW. THE TABLES COMPARE CURRENT AND PRIOR MONTH DATA. DISTRICT AND COUNTY COMPARISONS ARE PROVIDED WITHIN THIS BULLETIN

TANF SUMMARY

COMPARING TO AUGUST 2012, SEPTEMBER 2012 CASES DECREASED BY 388 (2.12%) TO 17,898. RECIPIENTS DECREASED BY 1,081 (2.56%) TO 41,118. PAYMENTS DECREASED BY \$59,528 (1.57%) TO \$3,724,290. AVERAGE PAYMENT PER CASE INCREASED BY \$1.16 (0.56%) TO \$0.00. PAYMENT PER RECIPIENT INCREASED BY \$0.91 (1.01%) TO \$90.58.

COMPARING TO SEPTEMBER 2011, SEPTEMBER 2012 CASES INCREASED BY 1,148 (6.85%). RECIPIENTS INCREASED BY 3,320 (8.78%). TOTAL PAYMENTS INCREASED BY \$231,350 (6.62%). THE AVERAGE PAYMENT PER CASE DECREASED BY \$0.45 (0.22%). THE AVERAGE PAYMENT PER RECIPIENT DECREASED BY \$1.83 (1.98%).

CASH ASSISTANCE (CA)

COMPARING TO AUGUST 2012, SEPTEMBER 2012 CASES DECREASED BY 192 (1.14%) TO 16,622. RECIPIENTS DECREASED BY 518 (1.37%) TO 37,301. PAYMENTS DECREASED BY \$42,153 (1.19%) TO \$3,504,989. AVERAGE PAYMENT PER CASE DECREASED BY \$0.10 (0.05%) TO \$210.86. PAYMENT PER RECIPIENT INCREASED BY \$0.18 (0.19%) TO \$93.97.

COMPARING TO SEPTEMBER 2011, SEPTEMBER 2012 CASES INCREASED BY 933 (5.95%). RECIPIENTS INCREASED BY 2,446 (7.02%). TOTAL PAYMENTS INCREASED BY \$179,491 (5.40%). THE AVERAGE PAYMENT PER CASE DECREASED BY \$1.10 (0.52%). THE AVERAGE PAYMENT PER RECIPIENT DECREASED BY \$1.44 (1.51%).

CASH ASSISTANCE UNEMPLOYED PARENT PROGRAM (CA-UP)

COMPARING TO AUGUST 2012, SEPTEMBER 2012 CASES DECREASED BY 29 (4.71%) TO 587. RECIPIENTS DECREASED BY 112 (4.68%) TO 2,280. PAYMENTS DECREASED BY \$7,581 (4.28%) TO \$169,687. AVERAGE PAYMENT PER CASE INCREASED BY \$1.30 (0.45%) TO \$289.07. PAYMENT PER RECIPIENT INCREASED BY \$0.31 (0.42%) TO \$74.42

COMPARING TO SEPTEMBER 2011, SEPTEMBER 2012 CASES INCREASED BY 184 (45.66%). RECIPIENTS INCREASED BY 723 (46.44%). TOTAL PAYMENTS INCREASED BY \$50,626 (42.52%). THE AVERAGE PAYMENT PER CASE DECREASED BY \$6.37 (2.16%). THE AVERAGE PAYMENT PER RECIPIENT DECREASED BY \$2.05 (2.68%).

CASH ASSISTANCE WITH GRANT UNDER \$100 (CA-MOE)

COMPARING TO AUGUST 2012, SEPTEMBER 2012 CASES DECREASED BY 164 (19.45%) TO 679. RECIPIENTS DECREASED BY 436 (22.51%) TO 1,501. PAYMENTS DECREASED BY \$9,404 (16.08%) TO \$49,088. AVERAGE PAYMENT PER CASE INCREASED BY \$2.90 (4.18%) TO \$72.29. AVERAGE PAYMENT PER RECIPIENT INCREASED BY \$2.50 (8.28%) TO \$32.70.

COMPARING TO SEPTEMBER 2011, SEPTEMBER 2012 CASES INCREASED BY 35 (5.43%). RECIPIENTS INCREASED BY 167 (12.52%). TOTAL PAYMENTS INCREASED BY \$1,528 (3.21%). THE AVERAGE PAYMENT PER CASE DECREASED BY \$1.56 (2.11%). THE AVERAGE PAYMENT PER RECIPIENT DECREASED BY \$2.95 (8.27%).

CASH ASSISTANCE UNEMPLOYED PARENT PROGRAM WITH GRANT UNDER \$100 (CA-UP-MOE) NEW PROGRAM STARTING 7/01

COMPARING TO AUGUST 2012, SEPTEMBER 2012 CASES DECREASED BY 3 (23.08%) TO 10. RECIPIENTS DECREASED BY 15 (29.41%) TO 36. PAYMENTS DECREASED BY \$390 (42.58%) TO \$526. AVERAGE PAYMENT PER CASE DECREASED BY \$17.86 (25.35%) TO \$52.60. PAYMENT PER RECIPIENT DECREASED BY \$3.35 (18.65%) TO \$14.61.

COMPARING TO SEPTEMBER 2011, SEPTEMBER 2012 CASES DECREASED BY 4 (28.57%). RECIPIENTS DECREASED BY 16 (1.75%). TOTAL PAYMENTS DECREASED BY \$295 (35.93%). THE AVERAGE PAYMENT PER CASE DECREASED BY \$6.04 (10.30%). THE AVERAGE PAYMENT PER RECIPIENT DECREASED BY \$1.18 (7.47%).

TUBERCULOSIS CONTROL PROGRAM (TC)

COMPARING TO AUGUST 2012, SEPTEMBER 2012 CASES INCREASED BY 0 (0.00%) TO 2. RECIPIENTS INCREASED BY 0 (0.00%) TO 2. PAYMENTS INCREASED BY \$91 (47.89%) TO \$281. AVERAGE PAYMENT PER CASE INCREASED BY \$113.08 (119.03%) TO \$208.08. AVERAGE PAYMENT PER RECIPIENT INCREASED BY \$45.50 (47.89%) TO \$140.50.

COMPARING TO SEPTEMBER 2011, SEPTEMBER 2012 CASES DECREASED BY 3 (60.00%). RECIPIENTS DECREASED BY 3 (60.00%). TOTAL PAYMENTS DECREASED BY \$454 (61.77%). THE AVERAGE PAYMENT PER CASE INCREASED BY \$61.08 (41.55%). THE AVERAGE PAYMENT PER RECIPIENT DECREASED BY \$6.50 (4.42%).

SUPPLEMENTAL NUTRITION ASSISTANCE PROGRAM (SNAP)

COMPARING TO AUGUST 2012, SEPTEMBER 2012 SUPPLEMENTAL NUTRITION ASSISTANCE HOUSEHOLDS DECREASED BY 2,989 (0.61%) TO 483,317. PERSONS RECEIVING SUPPLEMENTAL NUTRITION ASSISTANCE DECREASED BY 6,841 (0.61%) TO 1,120,861. TOTAL COUPON ISSUANCE DECREASED BY \$964,588 (0.68%) TO \$141,295,515. THE AVERAGE HOUSEHOLD ALLOTMENT DECREASED BY \$0.18 (0.06%) TO \$292.35. THE AVERAGE ALLOTMENT PER PERSON DECREASED BY \$0.09 (0.07%) TO \$126.06.

COMPARING TO SEPTEMBER 2011, SEPTEMBER 2012 SUPPLEMENTAL NUTRITION ASSISTANCE HOUSEHOLDS DECREASED BY 4,549 (0.93%). PERSONS RECEIVING SUPPLEMENTAL NUTRITION ASSISTANCE DECREASED BY 10,497 (0.93%). TOTAL COUPON ISSUANCE DECREASED BY \$1,889,884 (1.32%). THE AVERAGE ALLOTMENT PER HOUSEHOLD DECREASED BY \$1.14 (0.39%). THE AVERAGE ALLOTMENT PER PERSON DECREASED BY \$0.50 (0.40%).

MEDICAL ASSISTANCE PROGRAM (MA) NEW TABLE INCLUDES PROP. 204 CATEGORIES

COMPARING TO AUGUST 2012, SEPTEMBER 2012 TOTAL RECIPIENTS TOTAL RECIPIENTS DECREASED BY 13,612 (1.21%). SOBRA WOMEN AT 140% FPL DECREASED BY 234 (1.79%). SOBRA CHILDREN DECREASED BY 1,077 (1.88%). ADULTS W/O CHILD AT 100% DECREASED BY 1,692 (6.87%). FOSTER CARE INCREASED BY 28 (0.00%). 1931 AT 36% FPL DECREASED BY 3,540 (0.00%). EMERGENCY SERVICES DECREASED BY 11 (0.02%). INFANTS DECREASED BY 11 (0.02%). ADULT W/O CHILD AT 140% DECREASED BY 3,499 (4.35%). MEDICAL W/SPEND DOWN INCREASED BY 0 (100.00%). SOBRA WOMAN AT 100% DECREASED BY 26 (0.55%). SOBRA CHILD AT 100% DECREASED BY 2,922 (1.19%). TRANSITIONAL MEDICAL INCREASED BY 1,437 (3.18%). 1931 AT 100% DECREASED BY 1,955 (1.58%). YATI INCREASED BY 13 (3.95%). ALL OTHER CATEGORIES DECREASED BY 123 (0.44%).

COMPARING TO SEPTEMBER 2011, SEPTEMBER 2012 TOTAL RECIPIENTS TOTAL RECIPIENTS DECREASED BY 99,553 (8.19%). SOBRA WOMEN AT 140% FPL INCREASED BY 1,394 (12.21%). SOBRA CHILDREN DECREASED BY 12,056 (17.63%). ADULTS W/O CHILD AT 100% DECREASED BY 31,158 (57.58%). FOSTER CARE INCREASED BY 1,470 (10.90%). 1931 AT 36% FPL INCREASED BY 8,564 (2.34%). EMERGENCY SERVICES INCREASED BY 12,058 (21.42%). INFANTS DECREASED BY 32 (0.07%). ADULT W/O CHILD AT 140% DECREASED BY 75,977 (49.68%). MEDICAL W/SPEND DOWN DECREASED BY 1,055 (100.00%). SOBRA WOMAN AT 100% INCREASED BY 371 (8.65%). SOBRA CHILD AT 100% INCREASED BY 1,008 (0.42%). TRANSITIONAL MEDICAL INCREASED BY 2,272 (5.13%). 1931 AT 100% DECREASED BY 4,718 (3.74%). YATI INCREASED BY 5 (1.48%). ALL OTHER CATEGORIES DECREASED BY 1,699 (5.71%).

TANF SUMMARY

TABLES 1, 1A, 1B, & 1C: ARIZONA 1/

	SEPTEMBER 2012							AUGUST 2012			CHANGE FROM SEPTEMBER 2011		
	FAMILIES (CASES)	PERSONS (RECIP.)	ADULTS	CHILDREN	TOTAL PAYMENTS	AVERAGE	AVERAGE	FAMILIES (CASES)	PERSONS (RECIP.)	TOTAL PAYMENTS	FAMILIES (CASES)	PERSONS (RECIP.)	TOTAL PAYMENTS
						PAYMENT/ CASE	PAYMENT/ RECIP.						
ARIZONA	17,898	41,118	11,551	29,567	3,724,290	208.08	90.58	(388)	(1,081)	(59,528)	1,148	3,320	231,350
REGION													
MARICOPA	11,350	26,594	7,308	19,286	2,354,275	207.43	88.53	(301)	(897)	(58,059)	1,295	3,538	258,135
NORTHERN	925	2,015	606	1,409	187,765	202.99	93.18	(52)	(162)	(8,066)	(86)	(288)	(18,400)
APACHE	36	90	22	68	7,448	206.89	82.76	1	(8)	(724)	5	8	516
COCONINO	56	118	33	85	10,638	189.96	90.15	(7)	(25)	(1,534)	(8)	(33)	(2,190)
MOHAVE	577	1,234	373	861	118,095	204.67	95.70	(31)	(85)	(3,670)	(7)	(31)	315
NAVAJO	256	573	178	395	51,584	201.50	90.02	(15)	(44)	(2,138)	(76)	(232)	(17,041)
CENTRAL	2,165	4,886	1,474	3,412	455,777	210.52	93.28	(2)	25	4,034	202	595	51,750
GILA	452	951	376	575	105,966	234.44	111.43	6	32	2,695	19	22	3,832
LA PAZ	65	144	37	107	12,683	195.12	88.08	7	6	1,084	2	3	336
PINAL	867	1,938	526	1,412	173,837	200.50	89.70	(23)	(57)	(3,386)	128	349	28,608
YAVAPAI	303	650	180	470	59,219	195.44	91.11	(9)	(6)	(1,609)	21	67	4,607
YUMA	478	1,203	355	848	104,072	217.72	86.51	17	50	5,250	32	154	14,367
SOUTHERN	3,458	7,623	2,163	5,460	726,473	210.08	95.30	(33)	(47)	2,563	(263)	(525)	(60,135)
COCHISE	363	747	187	560	74,679	205.73	99.97	5	10	2,594	40	94	8,552
GRAHAM	224	455	146	309	52,636	234.98	115.68	(5)	(32)	(417)	(2)	(18)	(878)
GREENLEE	15	35	9	26	3,158	210.53	90.23	0	0	32	3	7	469
PIMA	2,729	6,103	1,752	4,351	569,227	208.58	93.27	(46)	(41)	(2,492)	(329)	(656)	(73,436)
SANTA CRUZ	127	283	69	214	26,773	210.81	94.60	13	16	2,846	25	48	5,158

1/EXCLUDES: PRIOR MONTH NET TOTALS OF 741 CASES; 1,969 RECIPIENTS; \$97,132.
 GRANT DIVERSION TOTALS OF: 661 CASES; \$520,092.
 ZERO PAY TOTALS OF 1,419 CASES; 7,395 RECIPIENTS.
 RRP: 203 CASES; 294 RECIPIENTS; \$38,272.

1/INCLUDES: TANF CHILD ONLY: 9,265 CASES; 15,755 RECIPIENTS; \$1,818,139.

	CURRENT MO. CASES	CURRENT MO. RECIP.	CURRENT MO. DOLLARS	PRIOR MO. CASES	PRIOR MO. RECIP.	PRIOR MO. DOLLARS
PASQUAYAOUI	230	665	\$68,212	13	48	\$3,211
WM APACHE	0	0	\$0	0	0	\$0
SALT RIVER	78	246	\$20,781	3	7	\$557
SAN CARLOS	487	1,013	\$120,096	23	55	\$2,761
HOPÍ	90	224	\$20,286	3	10	\$399
TOTAL	885	2,148	\$229,375	42	120	\$6,928

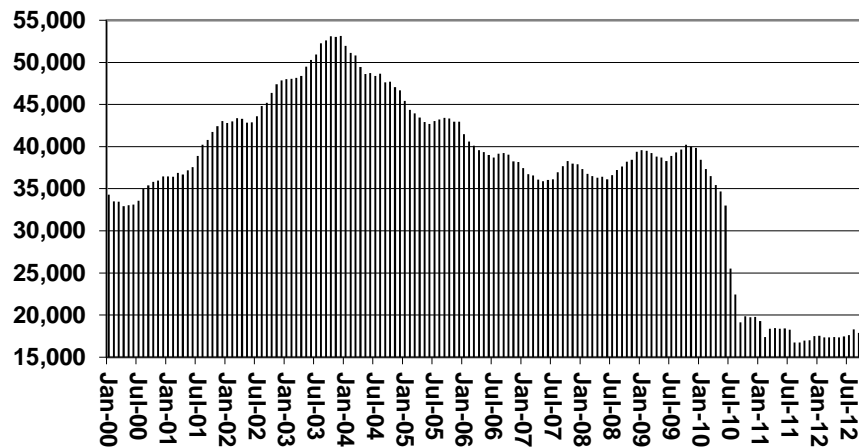
TANF SUMMARY

TABLES 1, 1A, 1B, & 1C

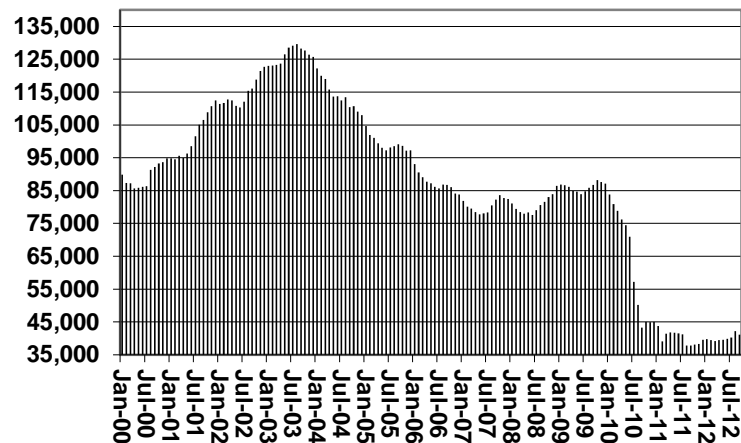
COMPARISON OF CASES, RECIPIENTS, PAYMENTS & AVERAGE PAYMENTS

FOR 2000, 2001, 2002, 2003, 2004, 2005, 2006, 2007, 2008, 2009, 2010, 2011, & 2012

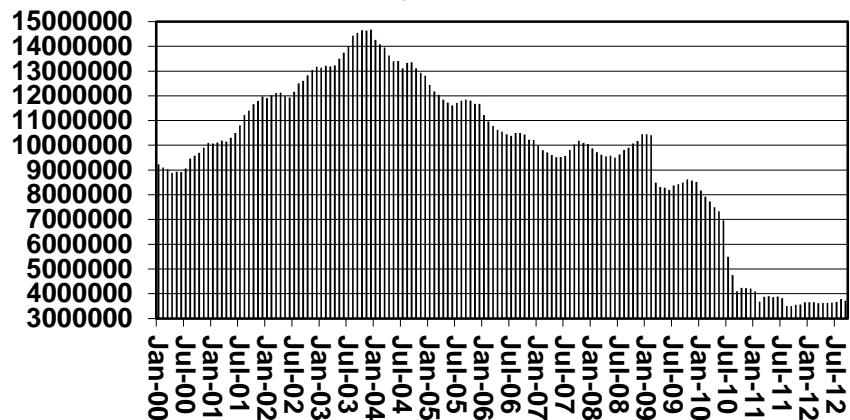
Cases



Recipients



Payments



Average Payments Per Recipient

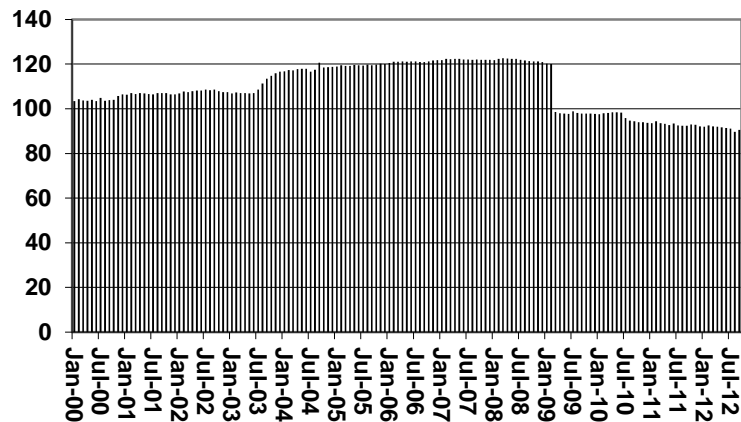


TABLE 1
CASH ASSISTANCE: ARIZONA 1/

	SEPTEMBER 2012							CHANGE FROM			AUGUST 2012			SEPTEMBER 2011		
	FAMILIES	(RECIPIENT)	ADULTS	CHILDREN	TOTAL	AVERAGE	AVERAGE	FAMILIES	PERSONS	TOTAL	FAMILIES	PERSONS	TOTAL	FAMILIES	PERSONS	TOTAL
	(CASES)				PAYMENTS	PAYMENT/ CASE	PAYMENT/ RECIPIENT	(CASES)	(RECIPIENT)	PAYMENTS	(CASES)	(RECIPIENT)	PAYMENTS	(CASES)	(RECIPIENT)	PAYMENTS
ARIZONA	16,622	37,301	9,950	27,351	3,504,989	210.86	93.97	(192)	(518)	(42,153)	933	2,446	179,491			
REGION																
MARICOPA	10,589	24,308	6,412	17,896	2,234,367	211.01	91.92	(155)	(439)	(40,534)	1,157	2,984	236,243			
NORTHERN	864	1,828	519	1,309	176,539	204.33	96.57	(35)	(125)	(6,220)	(71)	(274)	(17,622)			
APACHE	31	77	17	60	6,620	213.55	85.97	1	(7)	(453)	5	14	1,047			
COCONINO	52	109	29	80	10,362	199.27	95.06	(5)	(18)	(1,390)	(5)	(29)	(1,981)			
MOHAVE	532	1,085	301	784	108,558	204.06	100.05	(21)	(64)	(2,659)	(3)	(53)	(1,105)			
NAVAJO	249	557	172	385	50,999	204.82	91.56	(10)	(36)	(1,718)	(68)	(206)	(15,583)			
CENTRAL	1,975	4,308	1,197	3,111	415,935	210.60	96.55	(4)	(2)	(448)	78	150	13,702			
GILA	393	761	264	497	88,887	226.18	116.80	6	34	2,239	(38)	(161)	(12,915)			
LA PAZ	59	133	33	100	12,036	204.00	90.50	8	13	1,201	2	8	714			
PINAL	801	1,742	444	1,298	163,253	203.81	93.72	(18)	(49)	(3,888)	114	303	25,903			
YAVAPAI	277	577	150	427	55,007	198.58	95.33	(7)	(4)	(1,572)	8	30	2,074			
YUMA	445	1,095	306	789	96,752	217.42	88.36	14	31	3,461	43	148	11,711			
SOUTHERN	3,194	6,857	1,822	5,035	678,148	212.32	98.90	(5)	21	3,160	(282)	(592)	(66,617)			
COCHISE	346	708	173	535	72,597	209.82	102.54	11	21	2,511	37	89	8,399			
GRAHAM	212	418	126	292	48,993	231.10	117.21	(3)	(24)	(413)	(10)	(47)	(4,129)			
GREENLEE	14	33	8	25	3,114	222.43	94.36	0	0	5	2	5	425			
PIMA	2,504	5,439	1,453	3,986	527,723	210.75	97.03	(28)	(10)	(2,294)	(331)	(669)	(75,819)			
SANTA CRUZ	118	259	62	197	25,721	217.97	99.31	15	34	3,351	20	30	4,507			

1/EXCLUDES: PRIOR MONTH NET TOTALS OF: 255 CASES; 713 RECIPIENTS; \$55,690.
GRANT DIVERSION TOTALS OF: 661 CASES; \$520,092.
ZERO PAY TOTALS OF 1,415 CASES; 7,374 RECIPIENTS.

CASES WITH GRANT UNDER \$100 (SEE TABLE 1B).

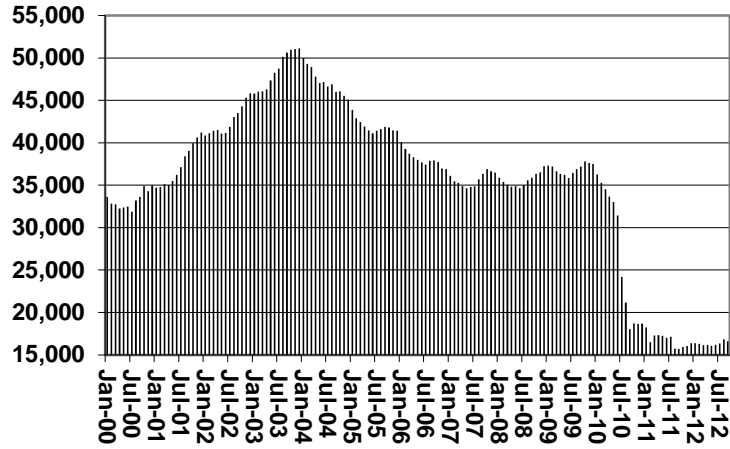
	CURRENT	CURRENT	CURRENT MO.	PRIOR MO.	PRIOR	PRIOR
	MO. CASES	MO. RECIPIENT	DOLLARS	CASES	MO. RECIPIENT	MO. DOLLARS
PASQUA/YAQUI	221	621	\$65,131	10	32	\$2,391
WM APACHE	0	0	\$0	0	0	\$0
SALT RIVER	78	246	\$20,781	3	7	\$557
SAN CARLOS	426	814	\$101,005	17	36	\$1,880
HOPÍ	90	224	\$20,286	3	10	\$399
TOTAL	815	1,905	\$207,203	33	85	\$5,227

CHART 1

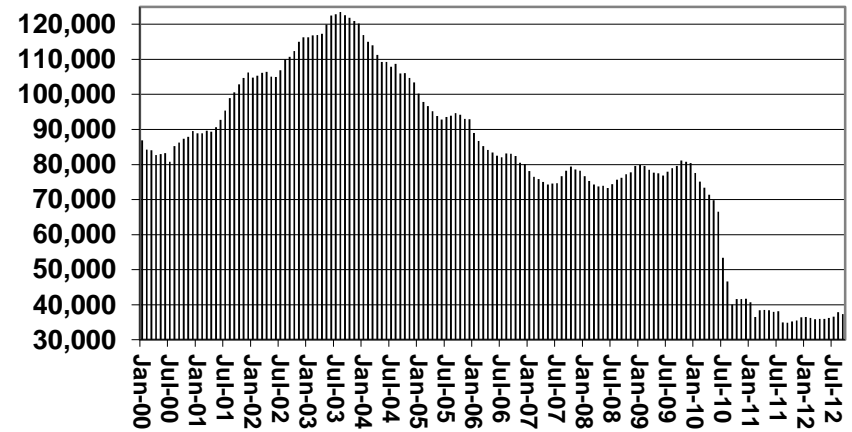
CASH ASSISTANCE PROGRAM

COMPARISON OF CASES, RECIPIENTS, PAYMENTS & AVERAGE PAYMENTS FOR 2000, 2001, 2002, 2003, 2004, 2005, 2006, 2007, 2008, 2009, 2010, 2011, & 2012

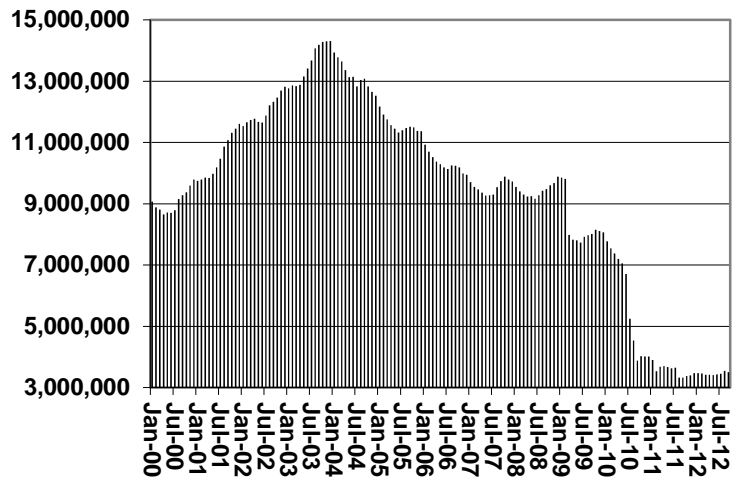
Cases



Recipients



Payments



Average Payment Per Recipient

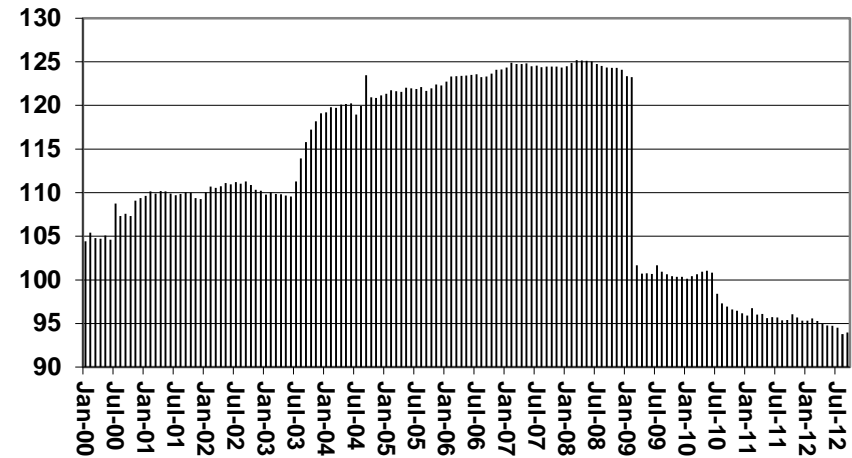


TABLE 1A
CA-UP

CASH ASSISTANCE UNEMPLOYED PARENT PROGRAM: ARIZONA 1/

	SEPTEMBER 2012							CHANGE FROM			AUGUST 2012			SEPTEMBER 2011		
	FAMILIES	PERSONS	ADULTS	CHILDREN	TOTAL	AVERAGE	AVERAGE	TOTAL	PERSONS	TOTAL	FAMILIES	PERSONS	TOTAL	FAMILIES	PERSONS	TOTAL
	(CASES)	(RECIP.)				PAYMENT/	PAYMENT/									
ARIZONA	587	2,280	1,104	1,176	169,687	289.07	74.42				(29)	(112)	(7,581)	184	723	50,626
REGION																
MARICOPA	294	1,192	546	646	86,680	294.83	72.72				(37)	(152)	(11,558)	66	303	18,522
NORTHERN	32	125	63	62	9,388	293.38	75.10				(2)	(10)	(547)	2	9	676
APACHE	2	8	4	4	670	335.00	83.75				(1)	(4)	(335)	(2)	(10)	(612)
COCONINO	0	0	0	0	0	0.00	0.00				0	0	0	(1)	(3)	(175)
MOHAVE	29	114	57	57	8,440	291.03	74.04				(1)	(4)	(329)	9	39	2,463
NAVAJO	1	3	2	1	278	278.00	92.67				0	(2)	117	(4)	(17)	(1,000)
CENTRAL	119	439	231	208	34,430	289.33	78.43				2	14	1,498	67	222	18,992
GILA	54	181	108	73	16,713	309.50	1.71				0	1	544	53	177	16,502
LA PAZ	2	6	4	2	453	226.50	75.50				0	0	7	0	(4)	(251)
PINAL	32	125	58	67	8,156	254.88	65.25				2	13	947	14	49	2,741
YAVAPAI	11	46	22	24	2,865	260.45	62.28				(1)	2	(228)	7	33	1,775
YUMA	20	81	39	42	6,243	312.15	77.07				5	23	2,094	11	49	3,768
SOUTHERN	142	524	264	260	39,189	275.98	74.79				4	11	1,160	31	107	6,893
COCHISE	3	10	6	4	891	297.00	89.10				0	0	124	(1)	(6)	(383)
GRAHAM	11	36	20	16	3,508	0.00	0.00				(1)	(4)	(32)	11	36	3,508
GREENLEE	0	0	0	0	0	0.00	0.00				0	0	0	0	0	0
PIMA	126	469	234	235	34,259	271.90	73.05				5	19	1,492	19	68	3,237
SANTA CRUZ	2	9	4	5	531	265.50	0.00				0	(4)	(424)	2	9	531

1/EXCLUDES: PRIOR MONTH NET TOTALS OF: 61 CASES; 258 RECIPIENTS; \$18,407.
GRANT DIVERSION TOTALS OF: 0 CASES; \$0.
ZERO PAY TOTALS OF 4 CASES; 21 RECIPIENTS.

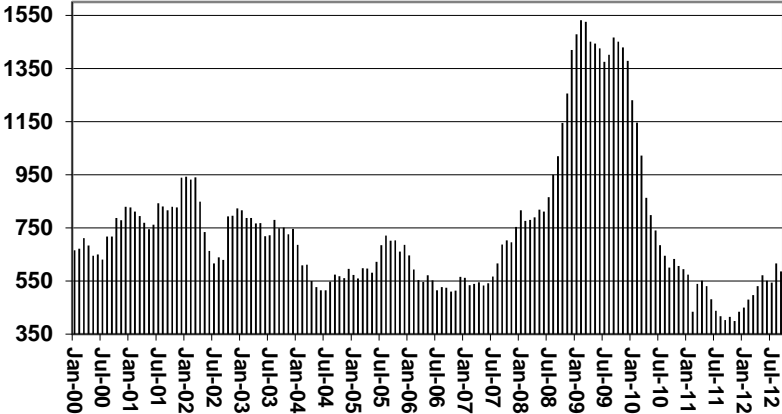
CASES WITH GRANT UNDER \$100 (SEE TABLE 1C).

	CURRENT	CURRENT MO.	CURRENT MO.	PRIOR MO.	PRIOR MO.	PRIOR MO.	MO.
	MO. CASES	RECIP.	DOLLARS	CASES	RECIP.	DOLLARS	DOLLARS
PASQUAYAQUI	9	44	\$3,081	3	16	\$820	
WM APACHE	0	0	\$0	0	0	\$0	
SALT RIVER	0	0	\$0	0	0	\$0	
SAN CARLOS	61	199	\$19,091	6	19	\$881	
HOPKI	0	0	\$0	0	0	\$0	
TOTAL	70	243	\$22,172	9	35	\$1,701	

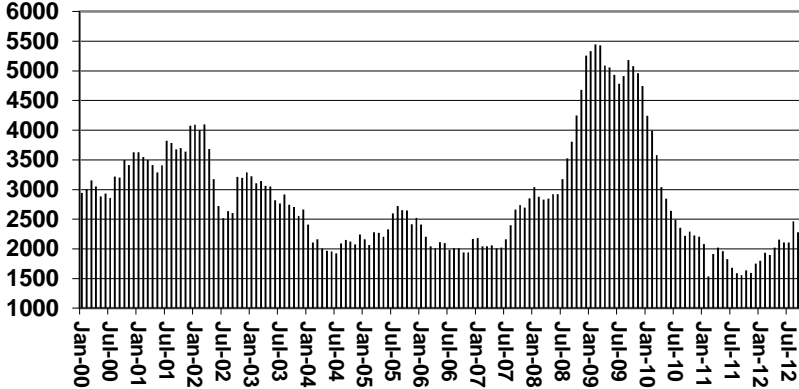
CHART 1A

CASH ASSISTANCE UNEMPLOYED PARENT PROGRAM COMPARISON OF CASES, RECIPIENTS, PAYMENTS & AVERAGE PAYMENTS FOR 2000, 2001, 2002, 2003, 2004, 2005, 2006, 2007, 2008, 2009, 2010, 2011, & 2012

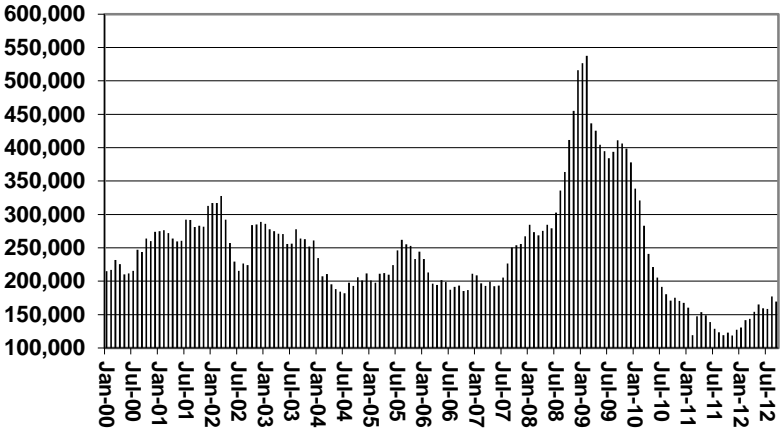
Cases



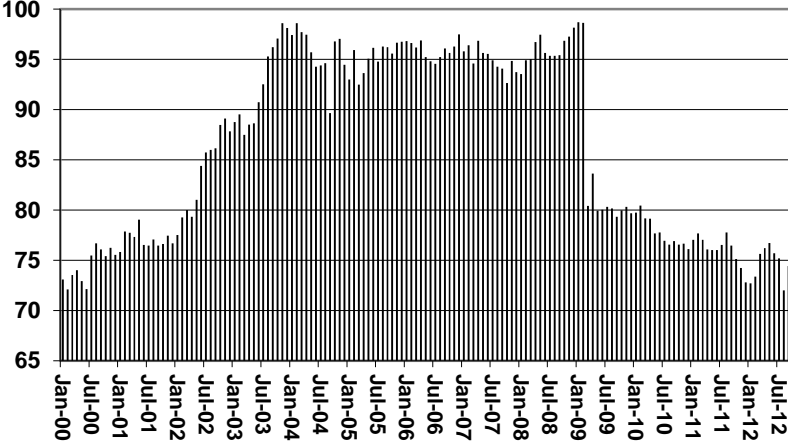
Recipients



Payments



Average Payment Per Recipient



**TABLE 1B 1/
CASH ASSISTANCE: ARIZONA
CASES WITH GRANT UNDER \$100**

	SEPTEMBER 2012							CHANGE FROM			AUGUST 2012			SEPTEMBER 2011		
	FAMILIES (CASES)	PERSONS (RECIP.)	ADULTS	CHILDREN	TOTAL PAYMENTS	AVERAGE PAYMENT/ CASE	AVERAGE PAYMENT/ RECIP.	FAMILIES (CASES)	PERSONS (RECIP.)	TOTAL PAYMENTS	FAMILIES (CASES)	PERSONS (RECIP.)	TOTAL PAYMENTS	FAMILIES (CASES)	PERSONS (RECIP.)	TOTAL PAYMENTS
	ARIZONA	679	1,501	479	1,022	49,088	72.29	32.70	(164)	(436)	(9,404)	35	167	1,528		
REGION																
MARICOPA	462	1,076	340	736	32,945	71.31	30.62	(108)	(298)	(5,829)	73	261	3,498			
NORTHERN	29	62	24	38	1,838	63.38	29.65	(14)	(24)	(1,231)	(17)	(23)	(1,454)			
APACHE	3	5	1	4	158	52.67	31.60	1	3	64	2	4	81			
COCONINO	4	9	4	5	276	69.00	30.67	(2)	(7)	(144)	(2)	(1)	(34)			
MOHAVE	16	35	15	20	1,097	68.56	31.34	(8)	(14)	(614)	(13)	(17)	(1,043)			
NAVAJO	6	13	4	9	307	51.17	23.62	(5)	(6)	(537)	(4)	(9)	(458)			
CENTRAL	70	134	44	90	5,327	76.10	39.75	(10)	(36)	(690)	(10)	(33)	(236)			
GILA	5	9	4	5	366	73.20	40.67	0	(3)	(88)	4	6	245			
LA PAZ	4	5	0	5	194	48.50	38.80	(1)	(7)	(124)	0	(1)	(127)			
PINAL	34	71	24	47	2,428	71.41	34.20	(6)	(18)	(364)	2	2	63			
YAVAPAI	15	27	8	19	1,347	89.80	49.89	(1)	(4)	191	7	8	780			
YUMA	12	22	8	14	992	82.67	45.09	(2)	(4)	(305)	(23)	(48)	(1,197)			
SOUTHERN	118	229	71	158	8,978	76.08	39.21	(32)	(78)	(1,654)	(11)	(38)	(280)			
COCHISE	14	29	8	21	1,191	85.07	41.07	(6)	(11)	(41)	4	11	536			
GRAHAM	1	1	0	1	135	135.00	135.00	0	(1)	66	(3)	(7)	(257)			
GREENLEE	1	2	1	1	44	44.00	22.00	0	0	27	1	2	44			
PIMA	95	182	59	123	7,087	74.60	38.94	(24)	(52)	(1,625)	(16)	(53)	(723)			
SANTA CRUZ	7	15	3	12	521	74.43	34.73	(2)	(14)	(81)	3	9	120			

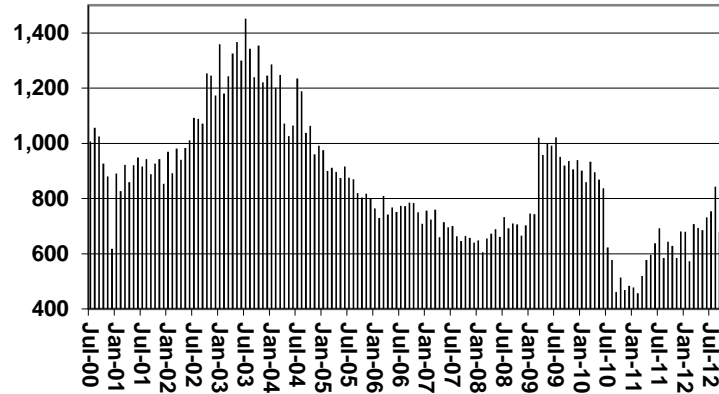
EXCLUDES: PRIOR MONTH NET TOTALS OF 396 CASES; 881 RECIPIENTS; \$21,697.

CHART 1B

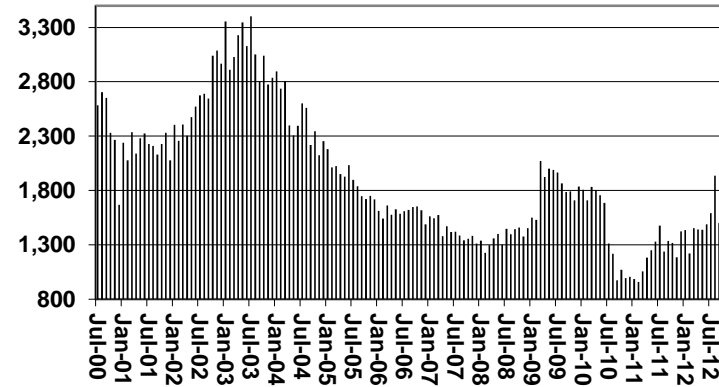
CASH ASSISTANCE PROGRAM CASES WITH GRANT UNDER \$100

FOR 2000, 2001, 2002, 2003, 2004, 2005, 2006, 2007, 2008, 2009, 2010, 2011, & 2012

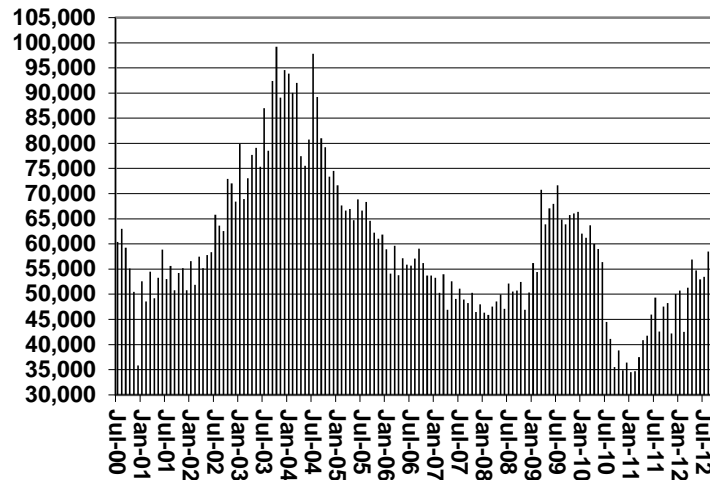
Cases



Recipients



Payments



Average Payment Per Recipient

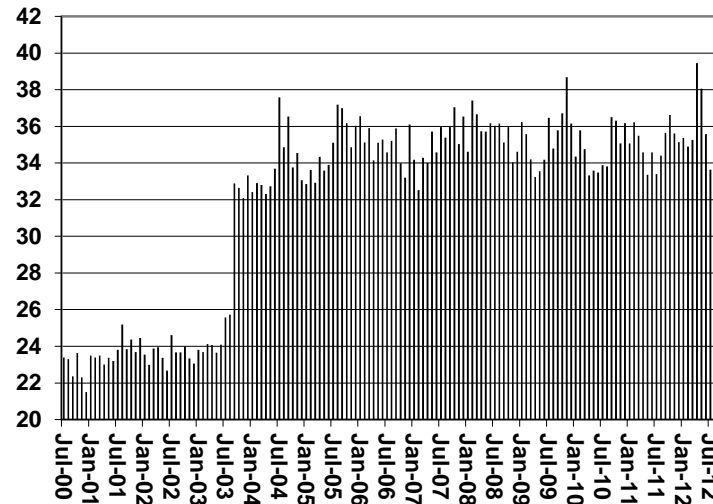


TABLE 1C 1/

CASH ASSISTANCE UNEMPLOYED PARENT PROGRAM: ARIZONA
 CASES WITH GRANT UNDER \$100

	SEPTEMBER 2012							CHANGE FROM			AUGUST 2012			SEPTEMBER 2011		
	FAMILIES	PERSONS	ADULTS	CHILDREN	TOTAL	AVERAGE	AVERAGE	FAMILIES	PERSONS	TOTAL	FAMILIES	PERSONS	TOTAL			
	(CASES)	(RECIP.)						PAYMENTS	PAYMENT/ CASE	PAYMENT/ RECIP.	(CASES)	(RECIP.)	PAYMENTS	(CASES)	(RECIP.)	PAYMENTS
ARIZONA	10	36	18	18	526	52.60	14.61	(3)	(15)	(390)	(4)	(16)	(295)			
REGION																
MARICOPA	5	18	10	8	283	56.60	15.72	(1)	(8)	(138)	(1)	(10)	(128)			
NORTHERN	0	0	0	0	0	0.00	0.00	(1)	(3)	(68)	0	0	0			
APACHE	0	0	0	0	0	0.00	0.00	0	0	0	0	0	0			
COCONINO	0	0	0	0	0	0.00	0.00	0	0	0	0	0	0			
MOHAVE	0	0	0	0	0	0.00	0.00	(1)	(3)	(68)	0	0	0			
NAVAJO	0	0	0	0	0	0.00	0.00	0	0	0	0	0	0			
CENTRAL	1	5	2	3	85	85.00	17.00	(1)	(3)	(81)	(2)	(4)	(36)			
GILA	0	0	0	0	0	0.00	0.00	0	0	0	0	0	0			
LA PAZ	0	0	0	0	0	0.00	0.00	0	0	0	0	0	0			
PINAL	0	0	0	0	0	0.00	0.00	(1)	(3)	(81)	(2)	(5)	(99)			
YAVAPAI	0	0	0	0	0	0.00	0.00	0	0	0	(1)	(4)	(22)			
YUMA	1	5	2	3	85	85.00	17.00	0	0	0	1	5	85			
SOUTHERN	4	13	6	7	158	39.50	12.15	0	(1)	(103)	(1)	(2)	(131)			
COCHISE	0	0	0	0	0	0.00	0.00	0	0	0	0	0	0			
GRAHAM	0	0	0	0	0	0.00	0.00	(1)	(3)	(38)	0	0	0			
GREENLEE	0	0	0	0	0	0.00	0.00	0	0	0	0	0	0			
PIMA	4	13	6	7	158	39.50	12.15	1	2	(65)	(1)	(2)	(131)			
SANTA CRUZ	0	0	0	0	0	0.00	0.00	0	0	0	0	0	0			

EXCLUDES: PRIOR MONTH NET TOTALS OF 29 CASES; 117 RECIPIENTS; \$1,338.

CHART 1C

CASH ASSISTANCE UNEMPLOYED PARENT PROGRAM

CASES WITH GRANT UNDER \$100

FOR 2000, 2001, 2002, 2003, 2004, 2005, 2006, 2007, 2008, 2009, 2010, 2011, & 2012

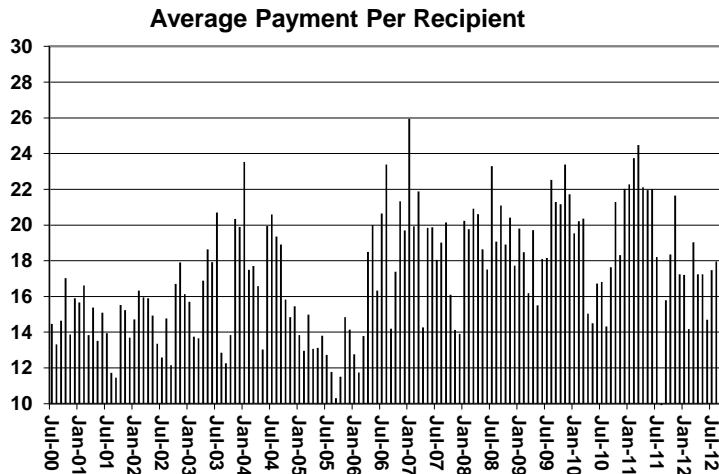
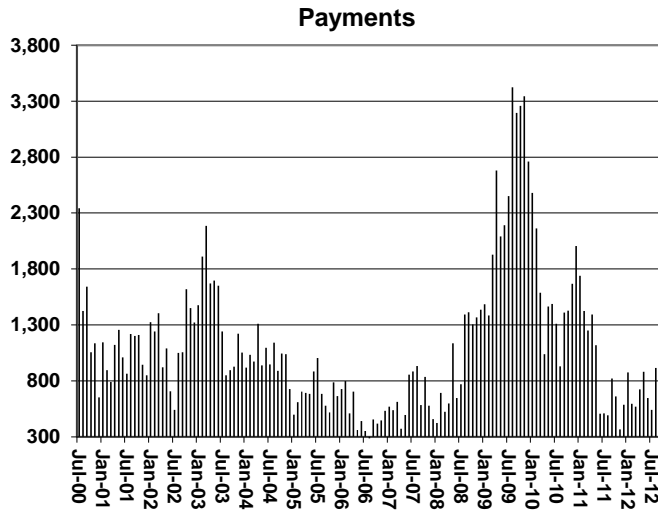
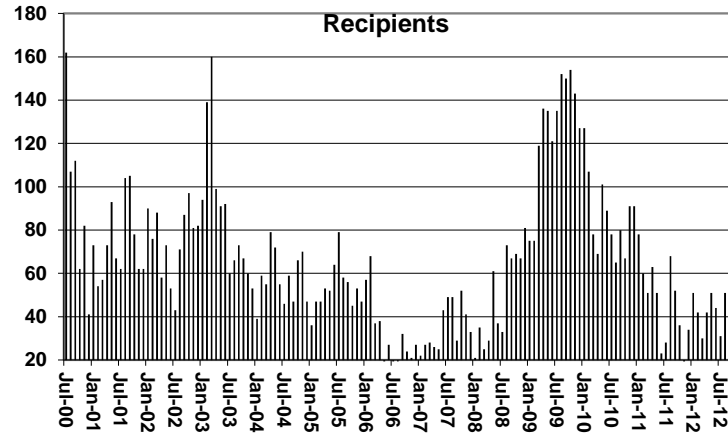
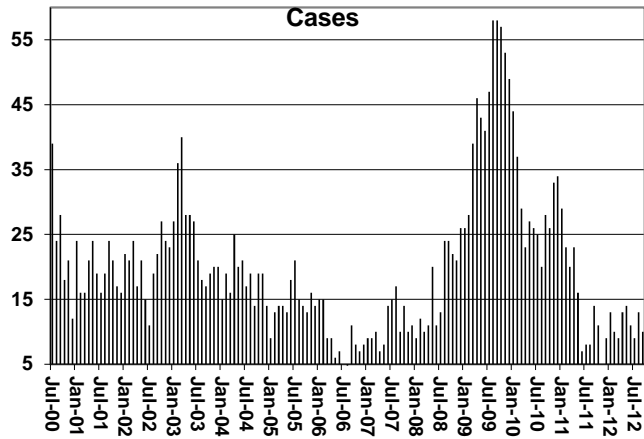


TABLE 4
TUBERCULOSIS CONTROL: ARIZONA 1/

	CHANGE FROM											
	SEPTEMBER 2012					AUGUST 2012			SEPTEMBER 2011			
	NUMBER OF CASES	PERSONS (RECIP.)	TOTAL PAYMENTS	AVERAGE PAYMENT/ CASE	AVERAGE PAYMENT/ RECIP.	NUMBER OF CASES	PERSONS (RECIP.)	TOTAL PAYMENTS	NUMBER OF CASES	PERSONS (RECIP.)	TOTAL PAYMENTS	
ARIZONA	2	2	281	140.50	140.50	0	0	91	(3)	(3)	(454)	
REGION												
MARICOPA	2	2	281	140.50	140.50	0	0	91	(3)	(3)	(454)	
NORTHERN	0	0	0	0.00	0.00	0	0	0	0	0	0	
APACHE	0	0	0	0.00	0.00	0	0	0	0	0	0	
COCONINO	0	0	0	0.00	0.00	0	0	0	0	0	0	
MOHAVE	0	0	0	0.00	0.00	0	0	0	0	0	0	
NAVAJO	0	0	0	0.00	0.00	0	0	0	0	0	0	
CENTRAL	0	0	0	0.00	0.00	0	0	0	0	0	0	
GILA	0	0	0	0.00	0.00	0	0	0	0	0	0	
LA PAZ	0	0	0	0.00	0.00	0	0	0	0	0	0	
PINAL	0	0	0	0.00	0.00	0	0	0	0	0	0	
YAVAPAI	0	0	0	0.00	0.00	0	0	0	0	0	0	
YUMA	0	0	0	0.00	0.00	0	0	0	0	0	0	
SOUTHERN	0	0	0	0.00	0.00	0	0	0	0	0	0	
COCHISE	0	0	0	0.00	0.00	0	0	0	0	0	0	
GRAHAM	0	0	0	0.00	0.00	0	0	0	0	0	0	
GREENLEE	0	0	0	0.00	0.00	0	0	0	0	0	0	
PIMA	0	0	0	0.00	0.00	0	0	0	0	0	0	
SANTA CRUZ	0	0	0	0.00	0.00	0	0	0	0	0	0	

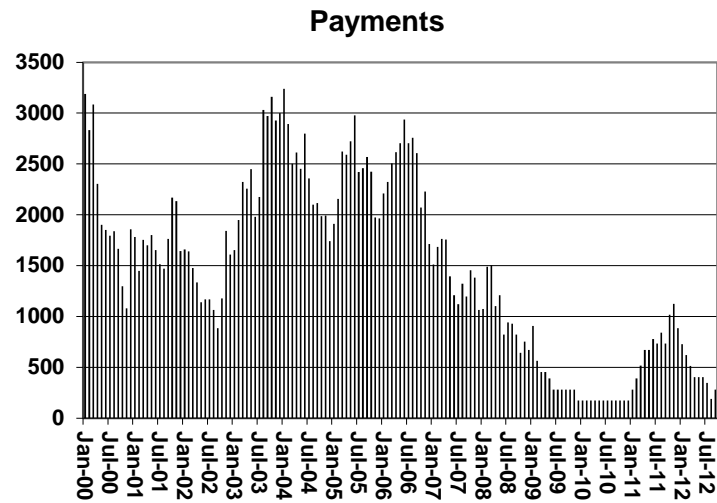
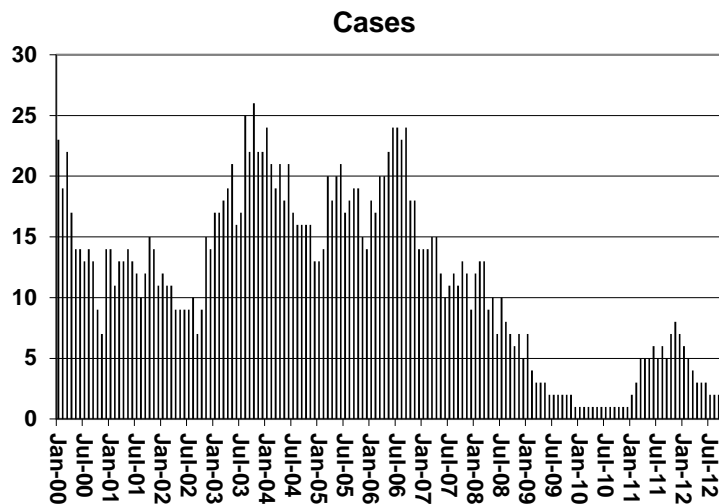
1/EXCLUDES: PRIOR MONTH NET TOTALS OF : 0 CASES; 0 RECIPIENTS; \$0.

CHART 4

TUBERCULOSIS CONTROL PROGRAM

COMPARISON OF CASES, PAYMENTS & AVERAGE PAYMENTS

FOR 2000, 2001, 2002, 2003, 2004, 2005, 2006, 2007, 2008, 2009, 2010, 2011, & 2012



Average Payment Per Case

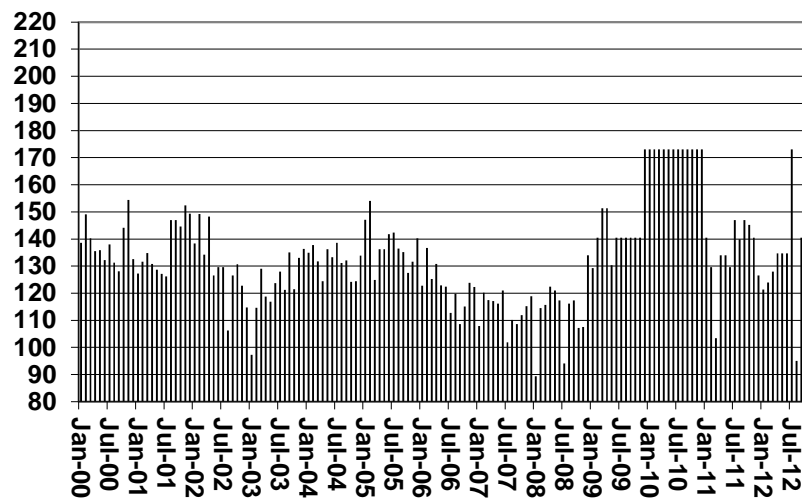


TABLE 6
SUPPLEMENTAL NUTRITION ASSISTANCE PROGRAM: ARIZONA 1/

CHANGE FROM

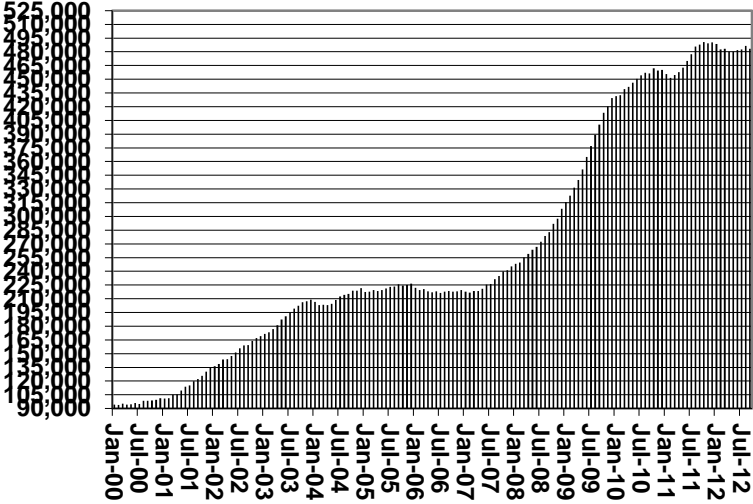
	SEPTEMBER 2012							AUGUST 2012			SEPTEMBER 2011		
	HOUSEHOLDS	PERSONS	ADULTS	CHILDREN	TOTAL PAYMENTS ISSUANCE	AVERAGE PAYMT./ HOUSEHOLD	AVERAGE PAYMT./ PERSON	HOUSEHOLDS	PERSONS	TOTAL PAYMENTS ISSUANCE	HOUSEHOLDS	PERSONS	TOTAL PAYMENTS ISSUANCE
ARIZONA	483,317	1,120,861	572,417	548,444	141,295,515	292.35	126.06	(2,989)	(6,841)	(964,588)	(4,549)	(10,497)	(1,889,884)
REGION													
MARICOPA	261,935	612,788	291,537	321,251	78,121,783	298.25	127.49	(1,599)	(3,820)	(574,043)	30	485	(217,575)
NORTHERN	56,039	133,829	75,755	58,074	16,657,798	297.25	124.47	(326)	(859)	(125,837)	66	(2,313)	(141,069)
APACHE	10,755	28,842	15,920	12,922	3,591,438	333.93	124.52	(97)	(228)	(39,178)	138	(186)	38,079
COCONINO	9,940	23,981	12,903	11,078	2,973,264	299.12	123.98	(69)	(112)	(13,485)	(55)	(855)	(60,894)
MOHAVE	21,263	45,094	27,099	17,995	5,611,470	263.91	124.44	(119)	(286)	(44,479)	(115)	(686)	(108,716)
NAVAJO	14,081	35,912	19,833	16,079	4,481,626	318.27	124.79	(41)	(233)	(28,695)	98	(586)	(9,538)
CENTRAL	64,416	153,864	83,356	70,508	18,854,850	292.70	122.54	(324)	(781)	(90,406)	(811)	(1,897)	(250,731)
GILA	6,042	13,305	7,673	5,632	1,721,486	284.92	129.39	(22)	(70)	(10,291)	(158)	(298)	(31,713)
LA PAZ	2,047	4,225	2,449	1,776	541,844	264.70	128.25	(15)	(31)	(4,954)	(13)	(34)	536
PINAL	23,560	58,870	30,298	28,572	7,333,899	311.29	124.58	(28)	(289)	(37,073)	(85)	(26)	(78,537)
YAVAPAI	15,494	31,174	18,780	12,394	3,805,939	245.64	122.09	(219)	(385)	(57,854)	(266)	(933)	(139,119)
YUMA	17,273	46,290	24,156	22,134	5,451,682	315.62	117.77	(40)	(6)	19,766	(289)	(606)	(1,898)
SOUTHERN	100,927	220,380	121,769	98,611	27,661,084	274.07	125.52	(740)	(1,381)	(174,302)	(3,834)	(6,772)	(1,280,509)
COCHISE	11,095	24,232	13,822	10,410	2,913,351	262.58	120.23	(21)	(128)	(3,585)	49	311	(3,660)
GRAHAM	3,348	7,732	4,260	3,472	956,551	285.71	123.71	(21)	(92)	(7,518)	(214)	(400)	(73,364)
GREENLEE	474	1,028	585	443	130,421	275.15	126.87	(25)	(25)	(5,634)	(56)	(125)	(18,756)
PIMA	81,095	174,334	96,372	77,962	22,106,193	272.60	126.80	(727)	(1,263)	(175,966)	(3,775)	(6,913)	(1,227,209)
SANTA CRUZ	4,915	13,054	6,730	6,324	1,554,568	316.29	119.09	54	127	18,401	162	355	42,480

1/EXCLUDES: PRIOR MONTH NET TOTALS OF : 5,799 CASES; 15,460 REC P ENTS; \$829,960.
 AGED CANCELATIONS: 11,291 CASES 15,126 REC P ENTS \$518,674.
 SNAP CONVERSIONS: 0 CASES 0 REC P ENTS \$0.
 SNAP CH LD ONLY: 62,486 CASES; 148,448 REC P ENTS; \$22,452,200.
 SNAP ZERO PAY: 5,714 CASES; 21,838 REC P ENTS.

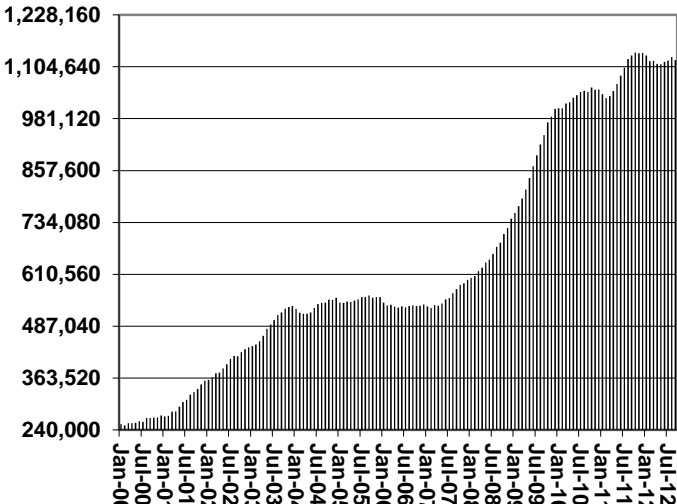
CHART 6

SUPPLEMENTAL NUTRITION ASSISTANCE PROGRAM (SNAP) COMPARISON OF HOUSEHOLDS, RECIPIENTS, PAYMENTS & AVERAGE PAYMENTS FOR 2000, 2001, 2002, 2003, 2004, 2005, 2006, 2007, 2008, 2009, 2010, 2011, & 2012

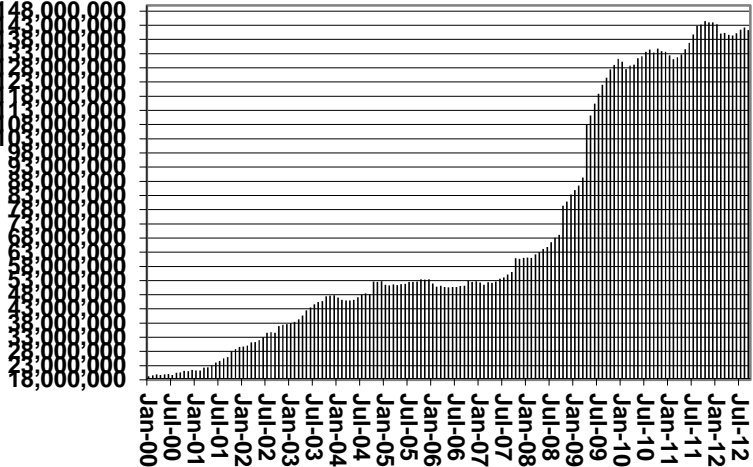
Households



Recipients



Payments



Average Payment Per Household

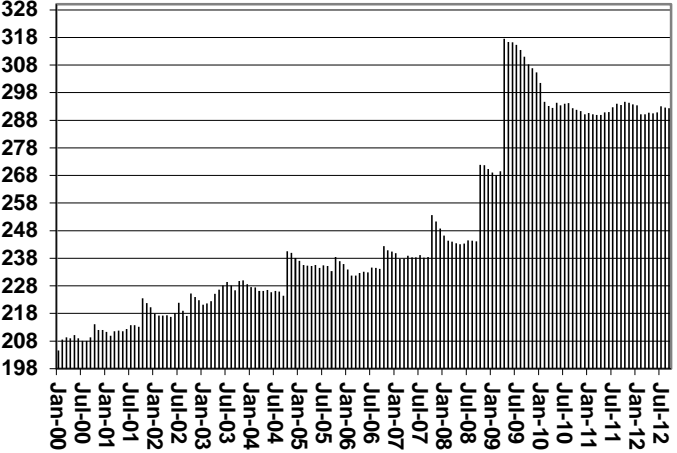


TABLE 7A
MEDICAL ASSISTANCE PROGRAM
RECIPIENTS

SEPTEMBER 2012

	SOBRA WOMAN 133% FPL	SOBRA CHILD	ADULT W/O CHILD 100% FPL	FOSTER CARE	1931 36% FPL	FEDERAL EMERGENCY SERVICES	INFANTS	ADULT W/O CHILD 40% FPL	MEDICAL W/SPEND DOWN	SOBRA WOMAN 100% FPL	SOBRA CHILD 100% FPL	TRANSITIONAL MEDICAL T1 - T4	1931 100% FPL	YATI	OTHER	TOTAL CASES
ARIZONA	12,808	56,320	22,954	14,956	374,048	68,350	46,298	76,965	0	4,662	242,006	46,590	121,600	342	28,033	1,115,932
REGION																
MARICOPA	7,355	32,410	11,202	8,405	210,115	56,085	28,353	37,365	0	2,613	145,817	25,343	64,091	188	14,696	644,038
NORTHERN	1,247	5,401	2,599	708	47,374	1,143	4,320	12,497	0	492	22,963	5,230	13,954	17	2,854	120,799
APACHE	199	1,100	359	46	11,929	91	851	3,165	0	95	4,110	855	2,465	1	396	25,662
COCONINO	279	978	479	130	8,780	470	963	1,928	0	119	4,720	1,144	2,776	8	415	23,189
MOHAVE	430	1,743	1,185	371	12,737	363	1,283	3,818	0	134	8,539	1,865	5,134	6	1,525	39,133
NAVAJO	339	1,580	576	161	13,928	219	1,223	3,586	0	144	5,594	1,366	3,579	2	518	32,815
CENTRAL	1,877	7,859	3,395	1,664	49,516	4,083	5,918	10,286	0	732	30,246	6,584	18,322	39	4,285	144,806
GILA	133	513	308	108	4,823	107	485	1,354	0	48	1,998	467	1,234	4	328	11,910
LA PAZ	45	216	119	27	1,386	115	160	352	0	27	686	123	356	0	164	3,776
PINAL	667	3,320	963	647	21,115	1,280	2,299	3,956	0	261	11,287	2,524	6,211	16	1,330	55,876
YAVAPAI	455	1,562	1,049	558	8,247	1,186	1,062	2,259	0	148	6,139	1,592	3,640	15	1,152	29,064
YUMA	577	2,248	956	324	13,945	1,395	1,912	2,365	0	248	10,136	1,878	6,881	4	1,311	44,180
SOUTHERN	2,329	10,650	5,758	4,179	67,043	7,039	7,707	16,817	0	825	42,980	9,433	25,233	98	6,198	206,289
COCHISE	221	991	752	268	7,246	440	735	1,691	0	84	4,416	1,003	2,778	7	871	21,503
GRAHAM	97	369	197	89	2,734	32	307	676	0	29	1,295	431	821	0	160	7,237
GREENLEE	14	39	36	10	446	4	51	106	0	4	179	42	80	1	30	1,042
P MA	1,869	8,697	4,359	3,771	52,768	6,130	6,181	13,587	0	652	34,057	7,466	19,517	90	4,660	163,804
SANTA CRUZ	128	554	414	41	3,849	433	433	757	0	56	3,033	491	2,037	0	477	12,703

TABLE 7B
MEDICAL ASSISTANCE PROGRAM
RECIPIENTS

CHANGE FROM
AUGUST 2012

	SOBRA WOMAN 133% FPL	SOBRA CHILD	ADULT W/O CHILD 100% FPL	FOSTER CARE	1931 36% FPL	FEDERAL EMERGENCY SERVICES	INFANTS	ADULT W/O CHILD 40% FPL	MEDICAL W/SPEND DOWN	SOBRA WOMAN 100% FPL	SOBRA CHILD 100% FPL	TRANSITIONAL MEDICAL T1 - T4	1931 100% FPL	YATI	OTHER	TOTAL CASES
ARIZONA	(234)	(1,077)	(1,692)	28	(3,540)	(11)	(11)	(3,499)	0	(26)	(2,922)	1,437	(1,955)	13	(123)	(13,612)
REGION																
MARICOPA	(93)	(586)	(866)	17	(2,500)	83	(13)	(1,844)	0	15	(1,507)	892	(863)	6	(89)	(7,348)
NORTHERN	(84)	(132)	(220)	4	(648)	3	(33)	(496)	0	(16)	(203)	67	(271)	0	(12)	(2,041)
APACHE	(16)	(82)	(28)	0	(154)	1	(19)	(91)	0	(2)	60	(32)	(57)	0	(13)	(433)
COCONINO	(22)	(12)	(23)	(3)	(27)	3	(9)	(106)	0	6	(53)	30	(40)	0	(4)	(260)
MOHAVE	(26)	(62)	(111)	9	(198)	(3)	(22)	(156)	0	(26)	(116)	33	(61)	0	(16)	(755)
NAVAJO	(20)	24	(58)	(2)	(269)	2	17	(143)	0	6	(94)	36	(113)	0	21	(593)
CENTRAL	(20)	(111)	(221)	(22)	14	(96)	4	(370)	0	(8)	(626)	182	(428)	0	(3)	(1,705)
GILA	4	(3)	(20)	(6)	(54)	(6)	(2)	(47)	0	(3)	33	6	(19)	1	2	(114)
LA PAZ	2	(8)	(6)	1	(15)	(5)	11	(21)	0	2	(10)	9	(16)	0	(4)	(60)
PINAL	(11)	(60)	(62)	(12)	(123)	(32)	44	(136)	0	1	(164)	194	(143)	(1)	5	(500)
YAVAPAI	(3)	(29)	(71)	(3)	(84)	(37)	(10)	(94)	0	0	(223)	39	(134)	0	(1)	(650)
YUMA	(12)	(11)	(62)	(2)	290	(16)	(39)	(72)	0	(8)	(262)	(66)	(116)	0	(5)	(381)
SOUTHERN	(37)	(248)	(385)	29	(406)	(1)	31	(789)	0	(17)	(586)	296	(393)	7	(19)	(2,518)
COCHISE	(2)	(13)	(37)	12	51	1	4	(54)	0	11	(134)	35	(50)	1	10	(165)
GRAHAM	(9)	(23)	(9)	(2)	(86)	2	(2)	(23)	0	(5)	(34)	13	(16)	0	(4)	(198)
GREENLEE	(3)	(5)	(2)	0	(17)	(1)	(1)	(3)	0	(2)	3	(1)	9	0	0	(23)
P MA	(24)	(194)	(314)	19	(375)	(16)	27	(680)	0	(17)	(392)	270	(365)	6	(22)	(2,077)
SANTA CRUZ	1	(13)	(23)	0	21	13	3	(29)	0	(4)	(29)	(21)	29	0	(3)	(55)

TABLE 7C
MEDICAL ASSISTANCE PROGRAM
RECIPIENTS

CHANGE FROM
SEPTEMBER 2011

	SOBRA WOMAN 133% FPL	SOBRA CHILD	ADULT W/O CHILD 100% FPL	FOSTER CARE	1931 36% FPL	FEDERAL EMERGENCY SERVICES	INFANTS	ADULT W/O CHILD 40% FPL	MEDICAL W/SPEND DOWN	SOBRA WOMAN 100% FPL	SOBRA CHILD 100% FPL	TRANSITIONAL MEDICAL T1 - T4	3E 1931 100% FPL	YATI	OTHER	TOTAL CASES
ARIZONA	1,394	(12,056)	(31,158)	1,470	8,564	12,058	(32)	(75,977)	(1,055)	371	1,008	2,272	(4,718)	5	(1,699)	(99,553)
REGION																
MARICOPA	914	(6,666)	(15,620)	996	5,416	11,451	781	(40,673)	(563)	266	3,241	2,019	(1,278)	9	(807)	(40,514)
NORTHERN	11	(1,994)	(3,817)	35	1,232	153	(350)	(10,545)	(170)	(17)	(865)	96	(1,048)	(1)	(258)	(17,538)
APACHE	(7)	(383)	(580)	10	55	30	(42)	(2,206)	(33)	10	(120)	(29)	(215)	1	(24)	(3,533)
COCONINO	6	(412)	(794)	(7)	23	90	(112)	(2,098)	(18)	12	(224)	23	(291)	(7)	(33)	(3,842)
MOHAVE	(2)	(477)	(1,467)	17	515	14	(151)	(3,324)	(92)	(67)	(298)	77	(282)	4	(128)	(5,661)
NAVAJO	14	(722)	(976)	15	639	19	(45)	(2,917)	(27)	28	(223)	25	(260)	1	(73)	(4,502)
CENTRAL	181	(1,249)	(4,645)	88	1,824	216	(110)	(9,481)	(117)	112	(513)	(43)	(1,128)	2	(238)	(15,101)
GILA	16	(62)	(331)	7	(26)	1	13	(979)	(20)	5	31	(32)	(106)	1	(10)	(1,492)
LA PAZ	9	(5)	(111)	2	36	(7)	6	(331)	(1)	13	51	(43)	(12)	0	(2)	(395)
PINAL	103	(668)	(1,389)	40	755	89	14	(3,903)	(33)	48	94	404	(251)	2	(69)	(4,764)
YAVAPAI	74	(132)	(1,250)	22	128	110	(110)	(2,192)	(35)	36	(134)	(164)	(382)	(2)	(96)	(4,127)
YUMA	(21)	(382)	(1,564)	17	931	23	(33)	(2,076)	(28)	10	(555)	(208)	(377)	1	(61)	(4,323)
SOUTHERN	288	(2,147)	(7,076)	351	92	238	(353)	(15,278)	(205)	10	(855)	200	(1,264)	(5)	(396)	(26,400)
COCHISE	(4)	(258)	(805)	25	147	26	(65)	(1,203)	(28)	(9)	(66)	131	(65)	0	(47)	(2,221)
GRAHAM	4	(84)	(226)	12	(107)	2	(54)	(625)	(11)	(4)	(106)	60	(43)	(1)	(18)	(1,201)
GREENLEE	3	(11)	(24)	1	(10)	0	(6)	(105)	(2)	1	(68)	11	(23)	1	(7)	(239)
P MA	267	(1,679)	(5,643)	306	(144)	182	(213)	(13,007)	(157)	18	(562)	13	(1,111)	(5)	(309)	(22,044)
SANTA CRUZ	18	(115)	(378)	7	206	28	(15)	(338)	(7)	4	(53)	(15)	(22)	0	(15)	(695)

CHART 7

MEDICAL ASSISTANCE PROGRAM

COMPARISON OF RECIPIENTS

FOR 2000, 2001, 2002, 2003, 2004, 2005, 2006, 2007, 2008, 2009, 2010, 2011, & 2012

Total Recipients

