



---

DEPARTMENT OF ECONOMIC SECURITY

---

*Your Partner For A Stronger Arizona*

State of Arizona

Department of Economic Security

Family Assistance Administration

Statistical Bulletin

September, 2011

Phone: (602) 5421-3678

<https://www.azdes.gov/appreports.aspx>

\*\*\*\* STATISTICAL BULLETIN \*\*\*\*  
ARIZONA DEPARTMENT OF ECONOMIC SECURITY  
FAMILY ASSISTANCE ADMINISTRATION  
BOX 6123, PHOENIX, ARIZONA 85005  
PHONE (602) 542-3678

SEPTEMBER 2011

THIS ISSUE OF THE STATISTICAL BULLETIN COMPARES SEPTEMBER 2011 DATA FOR EACH OF THE INDICATED PROGRAMS WITH THE INFORMATION FOR AUGUST 2011 AND SEPTEMBER 2010. STATEWIDE SUMMARIES OF ACTIVITY WITHIN EACH OF THE SPECIFIC PROGRAMS FOR THIS REPORT PERIOD ARE DISCUSSED BELOW. THE TABLES COMPARE CURRENT AND PRIOR MONTH DATA. DISTRICT AND COUNTY COMPARISONS ARE PROVIDED WITHIN THIS BULLETIN

TANF SUMMARY

COMPARING TO AUGUST 2011, SEPTEMBER 2011 CASES INCREASED BY 9 (0.05%) TO 16,750. RECIPIENTS INCREASED BY 5 (0.01%) TO 37,798. PAYMENTS DECREASED BY \$1,457 (0.04%) TO \$3,492,940. AVERAGE PAYMENT PER CASE DECREASED BY \$0.20 (0.10%) TO \$0.00. PAYMENT PER RECIPIENT DECREASED BY \$0.05 (0.05%) TO \$92.41.

COMPARING TO SEPTEMBER 2010, SEPTEMBER 2011 CASES DECREASED BY 2,376 (12.42%). RECIPIENTS DECREASED BY 5,513 (12.73%). TOTAL PAYMENTS DECREASED BY \$595,607 (14.57%). THE AVERAGE PAYMENT PER CASE DECREASED BY \$5.24 (2.45%). THE AVERAGE PAYMENT PER RECIPIENT DECREASED BY \$1.99 (2.11%).

CASH ASSISTANCE (CA)

COMPARING TO AUGUST 2011, SEPTEMBER 2011 CASES DECREASED BY 41 (0.26%) TO 15,689. RECIPIENTS DECREASED BY 45 (0.13%) TO 34,855. PAYMENTS DECREASED BY \$2,356 (0.07%) TO \$3,325,498. AVERAGE PAYMENT PER CASE INCREASED BY \$0.40 (0.19%) TO \$211.96. PAYMENT PER RECIPIENT INCREASED BY \$0.06 (0.06%) TO \$95.41.

COMPARING TO SEPTEMBER 2010, SEPTEMBER 2011 CASES DECREASED BY 2,346 (13.01%). RECIPIENTS DECREASED BY 5,181 (12.94%). TOTAL PAYMENTS DECREASED BY \$555,219 (14.31%). THE AVERAGE PAYMENT PER CASE DECREASED BY \$3.22 (1.50%). THE AVERAGE PAYMENT PER RECIPIENT DECREASED BY \$1.52 (1.57%).

CASH ASSISTANCE UNEMPLOYED PARENT PROGRAM (CA-UP)

COMPARING TO AUGUST 2011, SEPTEMBER 2011 CASES DECREASED BY 15 (3.59%) TO 403. RECIPIENTS DECREASED BY 65 (4.01%) TO 1,557. PAYMENTS DECREASED BY \$4,432 (3.59%) TO \$119,061. AVERAGE PAYMENT PER CASE INCREASED BY \$0.00 (0.00%) TO \$295.44. PAYMENT PER RECIPIENT INCREASED BY \$0.33 (0.44%) TO \$76.47

COMPARING TO SEPTEMBER 2010, SEPTEMBER 2011 CASES DECREASED BY 198 (32.95%). RECIPIENTS DECREASED BY 665 (29.93%). TOTAL PAYMENTS DECREASED BY \$51,835 (30.33%). THE AVERAGE PAYMENT PER CASE INCREASED BY \$11.09 (3.90%). THE AVERAGE PAYMENT PER RECIPIENT DECREASED BY \$0.44 (0.57%).

CASH ASSISTANCE WITH GRANT UNDER \$100 (CA-MOE)

COMPARING TO AUGUST 2011, SEPTEMBER 2011 CASES INCREASED BY 59 (10.09%) TO 644. RECIPIENTS INCREASED BY 97 (7.84%) TO 1,334. PAYMENTS INCREASED BY \$5,002 (11.75%) TO \$47,560. AVERAGE PAYMENT PER CASE INCREASED BY \$1.10 (1.51%) TO \$73.85. AVERAGE PAYMENT PER RECIPIENT INCREASED BY \$1.25 (3.63%) TO \$35.65.

COMPARING TO SEPTEMBER 2010, SEPTEMBER 2011 CASES INCREASED BY 182 (39.39%). RECIPIENTS INCREASED BY 361 (37.10%). TOTAL PAYMENTS INCREASED BY \$12,036 (33.88%). THE AVERAGE PAYMENT PER CASE DECREASED BY \$3.04 (3.95%). THE AVERAGE PAYMENT PER RECIPIENT DECREASED BY \$0.86 (2.36%).

CASH ASSISTANCE UNEMPLOYED PARENT PROGRAM WITH GRANT UNDER \$100 (CA-UP-MOE) NEW PROGRAM STARTING 7/01

COMPARING TO AUGUST 2011, SEPTEMBER 2011 CASES INCREASED BY 6 (75.00%) TO 14. RECIPIENTS INCREASED BY 18 (52.94%) TO 52. PAYMENTS INCREASED BY \$329 (66.87%) TO \$821. AVERAGE PAYMENT PER CASE DECREASED BY \$2.86 (4.65%) TO \$58.64. PAYMENT PER RECIPIENT INCREASED BY \$1.32 (9.12%) TO \$15.79.

COMPARING TO SEPTEMBER 2010, SEPTEMBER 2011 CASES DECREASED BY 14 (50.00%). RECIPIENTS DECREASED BY 28 (5.69%). TOTAL PAYMENTS DECREASED BY \$589 (41.77%). THE AVERAGE PAYMENT PER CASE INCREASED BY \$8.28 (16.44%). THE AVERAGE PAYMENT PER RECIPIENT DECREASED BY \$1.84 (10.44%).

TUBERCULOSIS CONTROL PROGRAM (TC)

COMPARING TO AUGUST 2011, SEPTEMBER 2011 CASES DECREASED BY 1 (16.67%) TO 5. RECIPIENTS DECREASED BY 1 (16.67%) TO 5. PAYMENTS DECREASED BY \$104 (12.40%) TO \$735. AVERAGE PAYMENT PER CASE INCREASED BY \$68.70 (49.13%) TO \$208.53. AVERAGE PAYMENT PER RECIPIENT INCREASED BY \$7.17 (5.13%) TO \$147.00.

COMPARING TO SEPTEMBER 2010, SEPTEMBER 2011 CASES INCREASED BY 4 (400.00%). RECIPIENTS INCREASED BY 4 (400.00%). TOTAL PAYMENTS INCREASED BY \$562 (324.86%). THE AVERAGE PAYMENT PER CASE INCREASED BY \$35.53 (20.54%). THE AVERAGE PAYMENT PER RECIPIENT DECREASED BY \$26.00 (15.03%).

SUPPLEMENTAL NUTRITION ASSISTANCE PROGRAM (SNAP)

COMPARING TO AUGUST 2011, SEPTEMBER 2011 SUPPLEMENTAL NUTRITION ASSISTANCE HOUSEHOLDS INCREASED BY 2,298 (0.47%) TO 487,866. PERSONS RECEIVING SUPPLEMENTAL NUTRITION ASSISTANCE INCREASED BY 8,025 (0.71%) TO 1,131,358. TOTAL COUPON ISSUANCE INCREASED BY \$414,849 (0.29%) TO \$143,185,399. THE AVERAGE HOUSEHOLD ALLOTMENT DECREASED BY \$0.54 (0.18%) TO \$293.49. THE AVERAGE ALLOTMENT PER PERSON DECREASED BY \$0.54 (0.42%) TO \$126.56.

COMPARING TO SEPTEMBER 2010, SEPTEMBER 2011 SUPPLEMENTAL NUTRITION ASSISTANCE HOUSEHOLDS INCREASED BY 31,399 (6.88%). PERSONS RECEIVING SUPPLEMENTAL NUTRITION ASSISTANCE INCREASED BY 86,948 (8.33%). TOTAL COUPON ISSUANCE INCREASED BY \$9,737,031 (7.30%). THE AVERAGE ALLOTMENT PER HOUSEHOLD INCREASED BY \$1.14 (0.39%). THE AVERAGE ALLOTMENT PER PERSON DECREASED BY \$1.21 (0.95%).

MEDICAL ASSISTANCE PROGRAM (MA) NEW TABLE INCLUDES PROP. 204 CATEGORIES

COMPARING TO AUGUST 2011, SEPTEMBER 2011 TOTAL RECIPIENTS TOTAL RECIPIENTS DECREASED BY 14,506 (1.18%). SOBRA WOMEN AT 140% FPL DECREASED BY 90 (0.78%). SOBRA CHILDREN DECREASED BY 1,782 (2.54%). ADULTS W/O CHILD AT 100% DECREASED BY 4,280 (7.33%). FOSTER CARE INCREASED BY 188 (0.00%). 1931 AT 36% FPL INCREASED BY 779 (0.00%). EMERGENCY SERVICES INCREASED BY 1,242 (2.26%). INFANTS INCREASED BY 143 (0.31%). ADULT W/O CHILD AT 140% DECREASED BY 10,639 (6.50%). MEDICAL W/SPEND DOWN DECREASED BY 1,197 (53.15%). SOBRA WOMAN AT 100% INCREASED BY 30 (0.70%). SOBRA CHILD AT 100% INCREASED BY 738 (0.31%). TRANSITIONAL MEDICAL INCREASED BY 1,478 (3.45%). 1931 AT 100% DECREASED BY 993 (0.78%). YATI INCREASED BY 7 (2.12%). ALL OTHER CATEGORIES DECREASED BY 130 (0.44%).

COMPARING TO SEPTEMBER 2010, SEPTEMBER 2011 TOTAL RECIPIENTS TOTAL RECIPIENTS INCREASED BY 19,955 (1.67%). SOBRA WOMEN AT 140% FPL INCREASED BY 449 (4.09%). SOBRA CHILDREN DECREASED BY 163 (0.24%). ADULTS W/O CHILD AT 100% DECREASED BY 7,866 (12.69%). FOSTER CARE INCREASED BY 1,429 (11.85%). 1931 AT 36% FPL INCREASED BY 27,003 (7.98%). EMERGENCY SERVICES INCREASED BY 3,007 (5.64%). INFANTS DECREASED BY 1,267 (2.66%). ADULT W/O CHILD AT 140% DECREASED BY 17,714 (10.38%). MEDICAL W/SPEND DOWN DECREASED BY 6,221 (85.50%). SOBRA WOMAN AT 100% INCREASED BY 610 (16.57%). SOBRA CHILD AT 100% INCREASED BY 13,402 (5.89%). TRANSITIONAL MEDICAL INCREASED BY 972 (2.24%). 1931 AT 100% INCREASED BY 4,306 (3.53%). YATI DECREASED BY 21 (5.87%). ALL OTHER CATEGORIES INCREASED BY 2,029 (7.32%).

## TANF SUMMARY

### TABLES 1, 1A, 1B, & 1C: ARIZONA 1/

	SEPTEMBER 2011							AUGUST 2011			CHANGE FROM SEPTEMBER 2010		
	FAMILIES (CASES)	PERSONS (RECIP.)	ADULTS	CHILDREN	TOTAL PAYMENTS	AVERAGE PAYMENT/ CASE	AVERAGE PAYMENT/ RECIP.	FAMILIES (CASES)	PERSONS (RECIP.)	TOTAL PAYMENTS	FAMILIES (CASES)	PERSONS (RECIP.)	TOTAL PAYMENTS
	ARIZONA	16,750	37,798	10,042	27,756	3,492,940	208.53	92.41	9	5	(1,457)	(2,376)	(5,513)
REGION													
MARICOPA	10,055	23,056	5,958	17,098	2,096,140	208.47	90.92	13	(28)	(3,644)	(1,717)	(4,284)	(432,451)
NORTHERN	1,011	2,303	660	1,643	206,165	203.92	89.52	19	28	4,007	(91)	(134)	(22,792)
APACHE	31	82	27	55	6,932	223.61	84.54	(2)	4	303	(11)	1	(1,322)
COCONINO	64	151	44	107	12,828	200.44	84.95	15	27	2,247	(9)	(19)	(3,103)
MOHAVE	584	1,265	346	919	117,780	201.68	93.11	5	(10)	(382)	(46)	(75)	(12,518)
NAVAJO	332	805	243	562	68,625	206.70	85.25	1	7	1,839	(25)	(41)	(5,849)
CENTRAL	1,963	4,291	1,161	3,130	404,027	205.82	94.16	22	76	4,149	(381)	(901)	(104,839)
GILA	433	929	327	602	102,134	235.88	109.94	1	13	(187)	(126)	(328)	(37,160)
LA PAZ	63	141	38	103	12,347	195.98	87.57	(3)	(5)	1,060	(24)	(68)	(5,962)
PINAL	739	1,589	380	1,209	145,229	196.52	91.40	(4)	(17)	(1,377)	(175)	(436)	(42,279)
YAVAPAI	282	583	131	452	54,612	193.66	93.67	14	53	4,658	(15)	(6)	(4,751)
YUMA	446	1,049	285	764	89,705	201.13	85.51	14	32	(5)	(41)	(63)	(14,687)
SOUTHERN	3,721	8,148	2,263	5,885	786,608	211.40	96.54	(45)	(71)	(5,969)	(187)	(194)	(35,525)
COCHISE	323	653	150	503	66,127	204.73	101.27	(5)	5	355	(42)	(58)	(7,890)
GRAHAM	226	473	155	318	53,514	236.79	113.14	(2)	(7)	1,278	24	101	7,532
GREENLEE	12	28	10	18	2,689	224.08	96.04	3	7	670	(2)	(6)	(279)
PIMA	3,058	6,759	1,892	4,867	642,663	210.16	95.08	(49)	(101)	(10,648)	(151)	(222)	(32,879)
SANTA CRUZ	102	235	56	179	21,615	211.91	91.98	8	25	2,376	(16)	(9)	(2,009)

1/EXCLUDES: PRIOR MONTH NET TOTALS OF 975 CASES; 2,462 RECIPIENTS; \$162,941.  
 GRANT DIVERSION TOTALS OF: 2,291 CASES; \$1,746,476.  
 ZERO PAY TOTALS OF 5,387 CASES; 15,996 RECIPIENTS.  
 RRP: 146 CASES; 213 RECIPIENTS; \$29,837.

1/INCLUDES: TANF CHILD ONLY: 8,954 CASES; 15,246 RECIPIENTS; \$1,751,524.

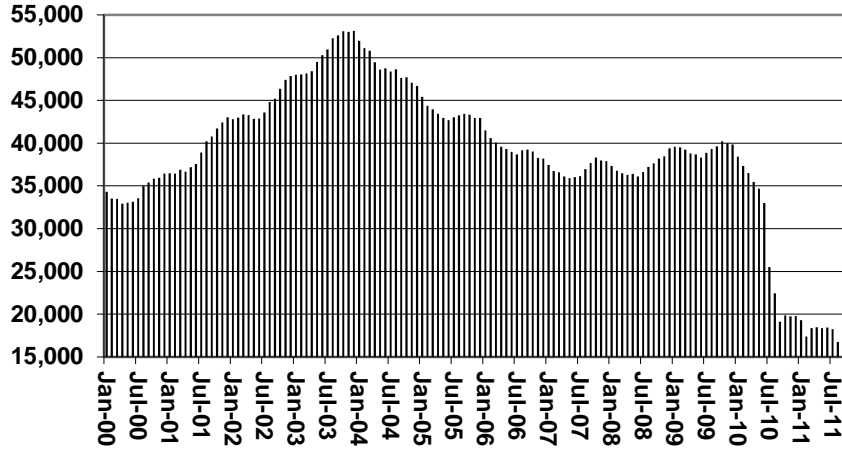
	CURRENT MO. CASES	CURRENT MO. RECIP.	CURRENT MO. DOLLARS	PRIOR MO. CASES	PRIOR MO. RECIP.	PRIOR MO. DOLLARS
PASQUA/YAQUI	266	759	\$80,877	21	63	\$4,258
WM APACHE	0	0	\$0	0	0	\$0
SALT RIVER	84	267	\$25,712	12	26	\$2,200
SAN CARLOS	467	1,010	\$115,034	19	43	\$2,399
HOPI	120	323	\$25,562	7	15	\$446
<b>TOTAL</b>	<b>937</b>	<b>2,359</b>	<b>\$247,185</b>	<b>59</b>	<b>147</b>	<b>\$9,303</b>

# TANF SUMMARY

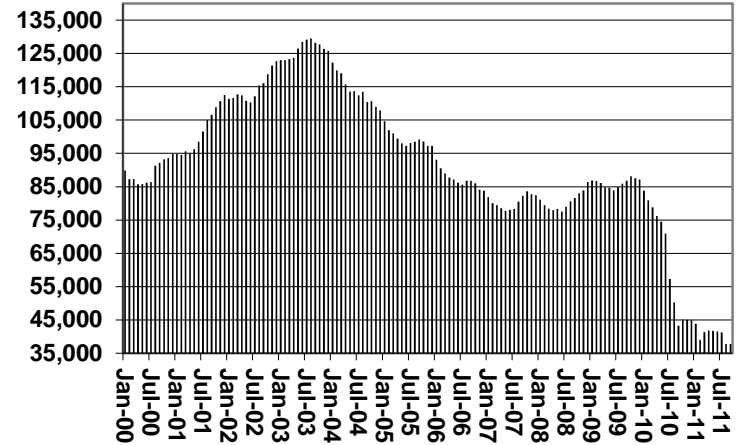
TABLES 1, 1A, 1B, & 1C

COMPARISON OF CASES, RECIPIENTS, PAYMENTS & AVERAGE PAYMENTS  
FOR 2000, 2001, 2002, 2003, 2004, 2005, 2006, 2007, 2008, 2009, 2010, & 2011

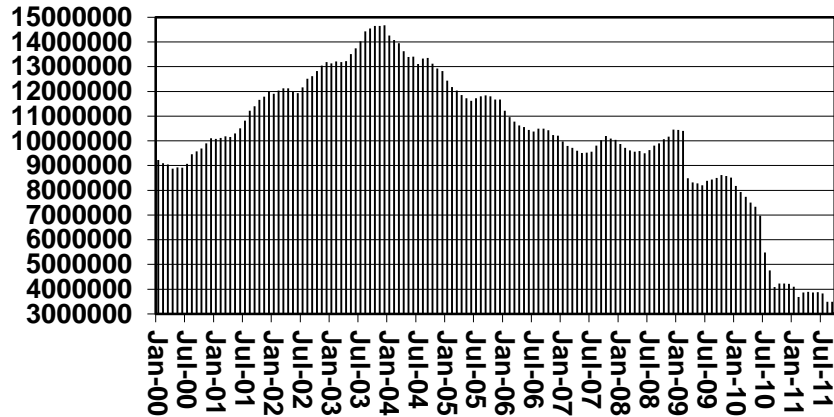
**Cases**



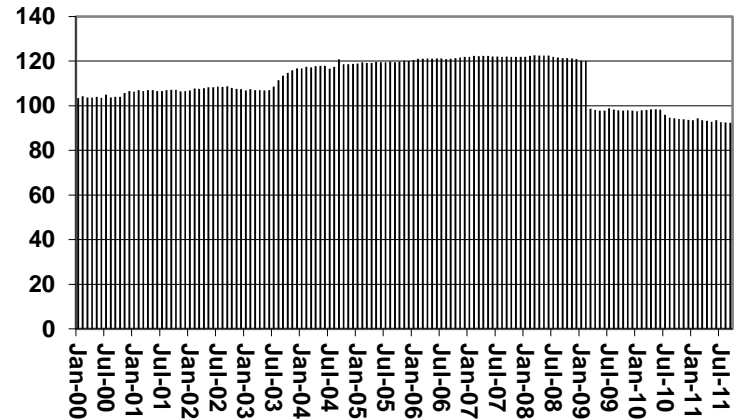
**Recipients**



**Payments**



**Average Payments Per Recipient**



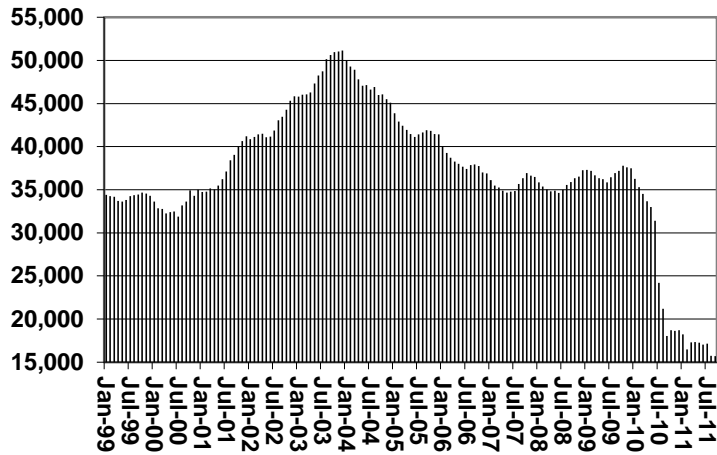
**TABLE 1**  
**CASH ASSISTANCE: ARIZONA 1/**

	SEPTEMBER 2011							CHANGE FROM			AUGUST 2011			SEPTEMBER 2010				
	FAMILIES (CASES)	(RECIP.)	ADULTS	CHILDREN	TOTAL PAYMENTS	AVERAGE PAYMENT/ CASE	AVERAGE PAYMENT/ RECIP.	FAMILIES (CASES)	PERSONS (RECIP.)	TOTAL PAYMENTS	FAMILIES (CASES)	PERSONS (RECIP.)	TOTAL PAYMENTS	FAMILIES (CASES)	PERSONS (RECIP.)	TOTAL PAYMENTS		
	ARIZONA	15,689	34,855	8,935	25,920	3,325,498	211.96	95.41	(41)	(45)	(2,356)	(2,346)	(5,181)	(555,219)				
REGION																		
MARICOPA	9,432	21,324	5,334	15,990	1,998,124	211.85	93.70	(15)	(78)	(4,192)	(1,604)	(3,764)	(385,656)					
NORTHERN	935	2,102	577	1,525	194,161	207.66	92.37	15	48	5,457	(122)	(220)	(28,403)					
APACHE	26	63	19	44	5,573	214.35	88.46	(3)	0	55	(15)	(14)	(2,346)					
COCONINO	57	138	38	100	12,343	216.54	89.44	11	21	1,882	(14)	(27)	(3,237)					
MOHAVE	535	1,138	295	843	109,663	204.98	96.36	5	18	1,517	(62)	(117)	(16,311)					
NAVAJO	317	763	225	538	66,582	210.04	87.26	2	9	2,003	(31)	(62)	(6,509)					
CENTRAL	1,846	3,980	1,048	2,932	388,448	210.43	97.60	(11)	(13)	(1,767)	(323)	(810)	(82,051)					
GILA	431	922	324	598	101,802	236.20	110.41	2	14	(149)	(125)	(327)	(36,825)					
LA PAZ	57	125	34	91	11,322	198.63	90.58	(2)	(4)	397	(21)	(59)	(5,316)					
PINAL	687	1,439	327	1,112	137,350	199.93	95.45	(11)	(23)	(2,015)	(177)	(424)	(39,910)					
YAVAPAI	269	547	116	431	52,933	196.78	96.77	25	70	5,389	(14)	(12)	(4,486)					
YUMA	402	947	247	700	85,041	211.54	89.80	0	17	456	(60)	(95)	(14,070)					
SOUTHERN	3,476	7,449	1,976	5,473	744,765	214.26	99.98	(55)	(89)	(7,699)	(223)	(280)	(40,553)					
COCHISE	309	619	138	481	64,198	207.76	103.71	(6)	(1)	(453)	(41)	(61)	(8,683)					
GRAHAM	222	465	151	314	53,122	239.29	114.24	1	5	1,837	23	102	7,571					
GREENLEE	12	28	10	18	2,689	224.08	96.04	3	7	670	(2)	(6)	(279)					
PIMA	2,835	6,108	1,622	4,486	603,542	212.89	98.81	(62)	(130)	(12,029)	(186)	(305)	(37,055)					
SANTA CRUZ	98	229	55	174	21,214	216.47	92.64	9	30	2,276	(17)	(10)	(2,107)					
1/EXCLUDES:	PRIOR MONTH NET TOTALS OF: 468 CASES; 1,181 RECIPIENTS; \$120,800.							CURRENT	CURRENT	CURRENT MO.	PRIOR MO.	PRIOR	PRIOR					
	GRANT DIVERSION TOTALS OF: 2,291 CASES; \$1,746,476.							MO. CASES	MO. RECIP.	DOLLARS	CASES	MO. RECIP.	MO. DOLLARS					
	ZERO PAY TOTALS OF 5,384 CASES; 15,984 RECIPIENTS.																	
								PASQUAY/AQUI	256	715	\$77,083	20	59	\$3,871				
								WM APACHE	0	0	\$0	0	0	\$0				
								SALT RIVER	84	267	\$25,712	12	26	\$2,200				
								SAN CARLOS	467	1,010	\$115,034	19	43	\$2,399				
								HOPI	120	323	\$25,562	7	15	\$446				
								<b>TOTAL</b>	<b>927</b>	<b>2,315</b>	<b>\$243,391</b>	<b>58</b>	<b>143</b>	<b>\$8,916</b>				
CASES WITH GRANT UNDER \$100 (SEE TABLE 1B).																		

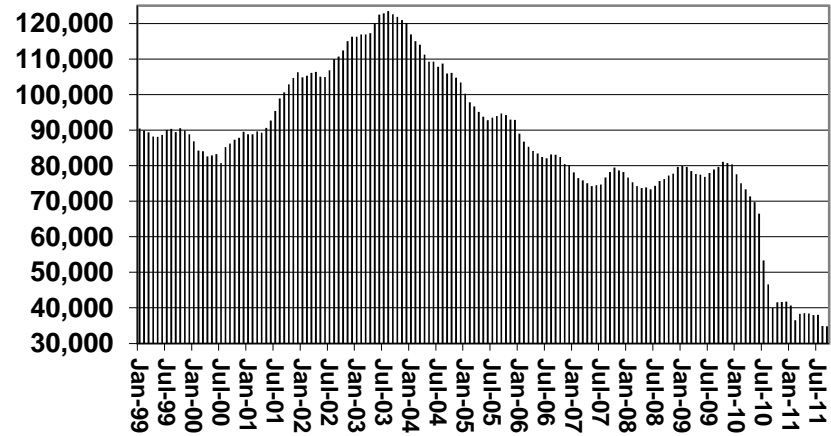
# CHART 1

## CASH ASSISTANCE PROGRAM COMPARISON OF CASES, RECIPIENTS, PAYMENTS & AVERAGE PAYMENTS FOR 1999, 2000, 2001, 2002, 2003, 2004, 2005, 2006, 2007, 2008, 2009, 2010, & 2011

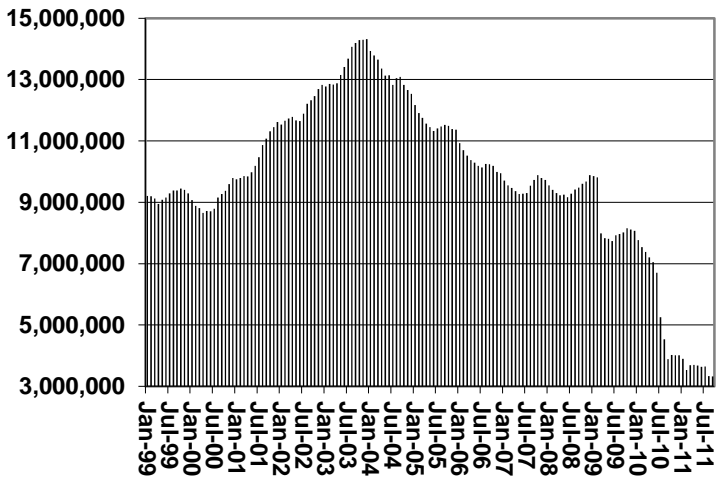
**Cases**



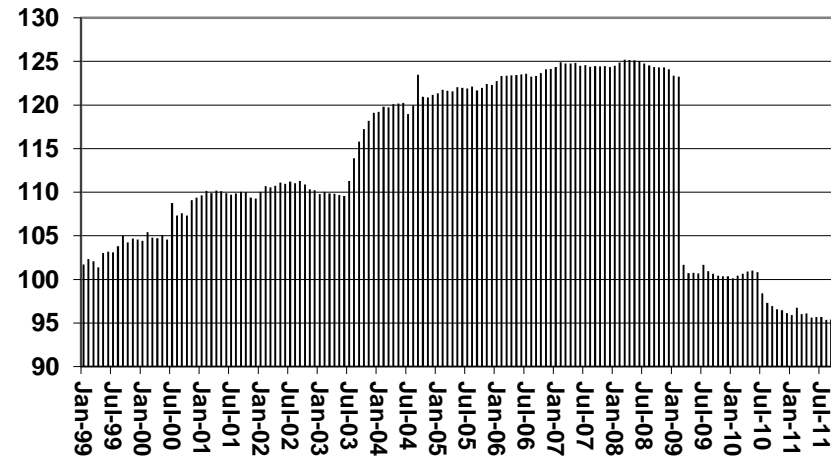
**Recipients**



**Payments**



**Average Payment Per Recipient**



**TABLE 1A  
CA-UP**

**CASH ASSISTANCE UNEMPLOYED PARENT PROGRAM: ARIZONA 1/**

	SEPTEMBER 2011							CHANGE FROM			AUGUST 2011			SEPTEMBER 2010		
	FAMILIES (CASES)	PERSONS (RECIP.)	ADULTS	CHILDREN	TOTAL PAYMENTS	AVERAGE PAYMENT/ CASE	AVERAGE PAYMENT/ RECIP.	FAMILIES (CASES)	PERSONS (RECIP.)	TOTAL PAYMENTS	FAMILIES (CASES)	PERSONS (RECIP.)	TOTAL PAYMENTS			
ARIZONA	403	1,557	713	844	119,061	295.44	76.47	(15)	(65)	(4,432)	(198)	(665)	(51,835)			
REGION																
MARICOPA	228	889	396	493	68,158	298.94	76.67	(11)	(36)	(3,030)	(194)	(665)	(53,431)			
NORTHERN	30	116	55	61	8,712	290.40	75.10	(5)	(28)	(2,132)	13	63	4,498			
APACHE	4	18	8	10	1,282	320.50	71.22	1	4	279	3	14	947			
COCONINO	1	3	1	2	175	175.00	58.33	1	3	175	0	0	(103)			
MOHAVE	20	75	36	39	5,977	298.85	79.69	(7)	(36)	(2,426)	8	37	3,049			
NAVAJO	5	20	10	10	1,278	255.60	63.90	0	1	(160)	2	12	605			
CENTRAL	34	135	61	74	9,895	291.03	73.30	2	7	712	(17)	(57)	(3,960)			
GILA	1	4	2	2	211	211.00	52.75	0	0	0	(1)	(2)	(344)			
LA PAZ	2	10	4	6	704	352.00	70.40	2	10	704	(2)	(6)	(636)			
PINAL	18	76	33	43	5,415	300.83	71.25	0	(3)	8	(14)	(49)	(2,980)			
YAVAPAI	4	13	6	7	1,090	272.50	83.85	1	2	294	0	(1)	(127)			
YUMA	9	32	16	16	2,475	275.00	77.34	(4)	(18)	(1,534)	(8)	(25)	(2,102)			
SOUTHERN	111	417	201	216	32,296	290.95	77.45	2	8	1,258	8	20	3,287			
COCHISE	4	16	8	8	1,274	318.50	79.63	2	10	790	3	12	973			
GRAHAM	0	0	0	0	0	0.00	0.00	(2)	(6)	(556)	(1)	(3)	(278)			
GREENLEE	0	0	0	0	0	0.00	0.00	0	0	0	0	0	0			
PIMA	107	401	193	208	31,022	289.93	77.36	2	4	1,024	6	11	2,592			
SANTA CRUZ	0	0	0	0	0	0.00	0.00	0	0	0	0	0	0			
								CURRENT MO. CASES	CURRENT MO. RECIP.	CURRENT MO. DOLLARS	PRIOR MO. CASES	PRIOR MO. RECIP.	PRIOR MO. DOLLARS			
								10	44	\$3,794	1	4	\$387			
								0	0	\$0	0	0	\$0			
								0	0	\$0	0	0	\$0			
								0	0	\$0	0	0	\$0			
								0	0	\$0	0	0	\$0			
								0	0	\$0	0	0	\$0			
								<b>TOTAL</b>	<b>10</b>	<b>44</b>	<b>\$3,794</b>	<b>1</b>	<b>4</b>	<b>\$387</b>		

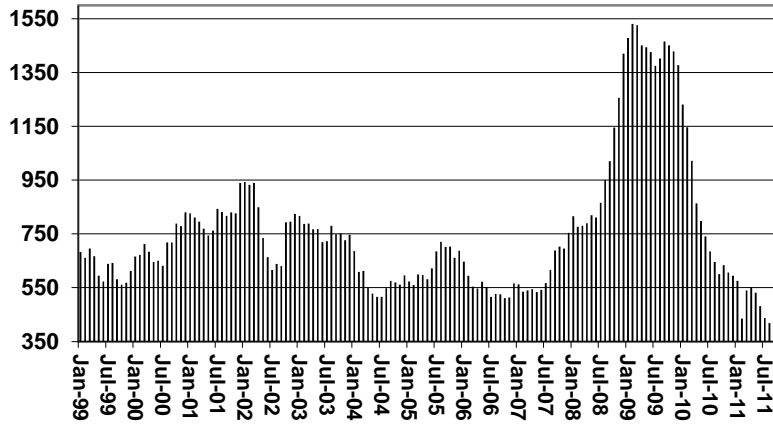
1/EXCLUDES: PRIOR MONTH NET TOTALS OF: 38 CASES; 149 RECIPIENTS; \$14,582.  
GRANT DIVERSION TOTALS OF: 0 CASES; \$0.  
ZERO PAY TOTALS OF 3 CASES; 12 RECIPIENTS.

CASES WITH GRANT UNDER \$100 (SEE TABLE 1C).

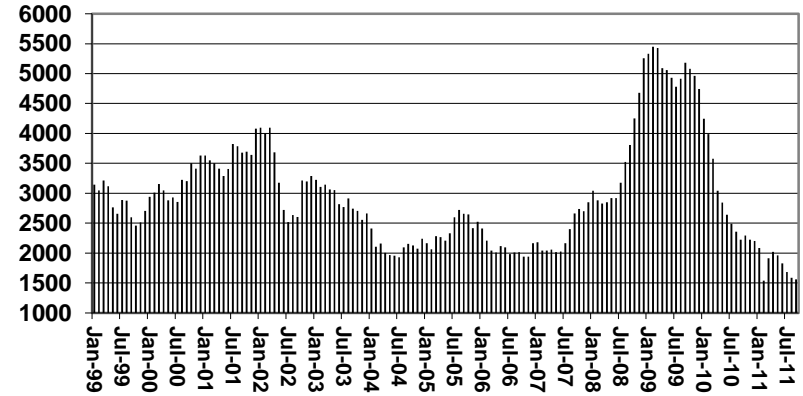
# CHART 1A

## CASH ASSISTANCE UNEMPLOYED PARENT PROGRAM COMPARISON OF CASES, RECIPIENTS, PAYMENTS & AVERAGE PAYMENTS FOR 1999, 2000, 2001, 2002, 2003, 2004, 2005, 2006, 2007, 2008, 2009, 2010, & 2011

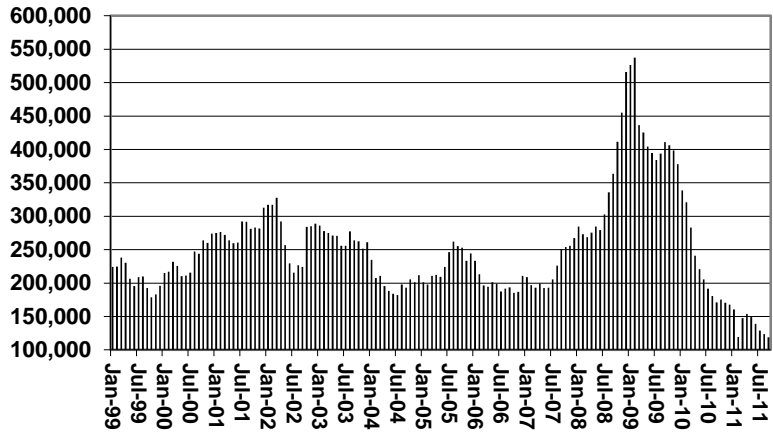
### Cases



### Recipients



### Payments



### Average Payment Per Recipient

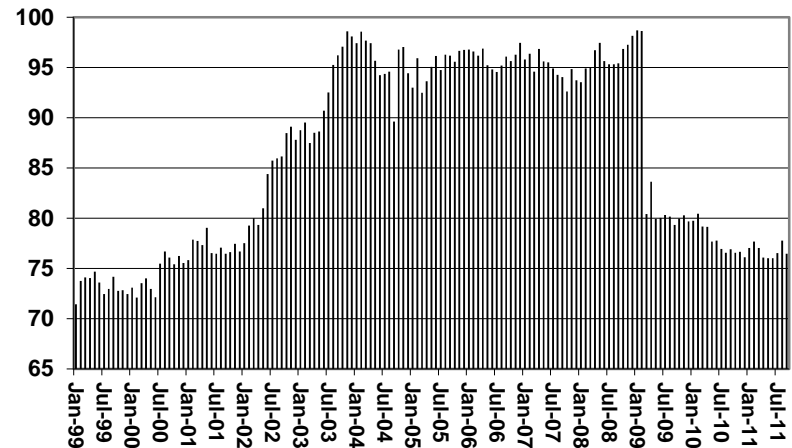




TABLE 1B 1/

CASH ASSISTANCE: ARIZONA  
CASES WITH GRANT UNDER \$100

	CHANGE FROM												
	SEPTEMBER 2011							AUGUST 2011			SEPTEMBER 2010		
	FAMILIES (CASES)	PERSONS (RECIP.)	ADULTS	CHILDREN	TOTAL PAYMENTS	AVERAGE PAYMENT/ CASE	AVERAGE PAYMENT/ RECIP.	FAMILIES (CASES)	PERSONS (RECIP.)	TOTAL PAYMENTS	FAMILIES (CASES)	PERSONS (RECIP.)	TOTAL PAYMENTS
ARIZONA	644	1,334	373	961	47,560	73.85	35.65	59	97	5,002	182	361	12,036
REGION													
MARICOPA	389	815	218	597	29,447	75.70	36.13	38	79	3,500	98	183	7,384
NORTHERN	46	85	28	57	3,292	71.57	38.73	10	11	733	19	26	1,134
APACHE	1	1	0	1	77	77.00	77.00	0	0	(31)	1	1	77
COCONINO	6	10	5	5	310	51.67	31.00	4	6	241	5	8	237
MOHAVE	29	52	15	37	2,140	73.79	41.15	7	8	527	9	8	765
NAVAJO	10	22	8	14	765	76.50	34.77	(1)	(3)	(4)	4	9	55
CENTRAL	80	167	48	119	5,563	69.54	33.31	7	7	494	39	93	1,854
GILA	1	3	1	2	121	121.00	40.33	(1)	(1)	(38)	0	1	9
LA PAZ	4	6	0	6	321	80.25	53.50	(3)	(11)	(41)	(1)	(3)	(10)
PINAL	32	69	18	51	2,365	73.91	34.28	6	9	547	15	35	530
YAVAPAI	8	19	7	12	567	70.88	29.84	(13)	(23)	(1,047)	(2)	3	(160)
YUMA	35	70	22	48	2,189	62.54	31.27	18	33	1,073	27	57	1,485
SOUTHERN	129	267	79	188	9,258	71.77	34.67	4	0	275	26	59	1,664
COCHISE	10	18	4	14	655	65.50	36.39	(1)	(4)	18	(4)	(9)	(180)
GRAHAM	4	8	4	4	392	98.00	49.00	(1)	(6)	(3)	2	2	239
GREENLEE	0	0	0	0	0	0.00	0.00	0	0	0	0	0	0
PIMA	111	235	70	165	7,810	70.36	33.23	7	15	160	27	65	1,507
SANTA CRUZ	4	6	1	5	401	100.25	66.83	(1)	(5)	100	1	1	98

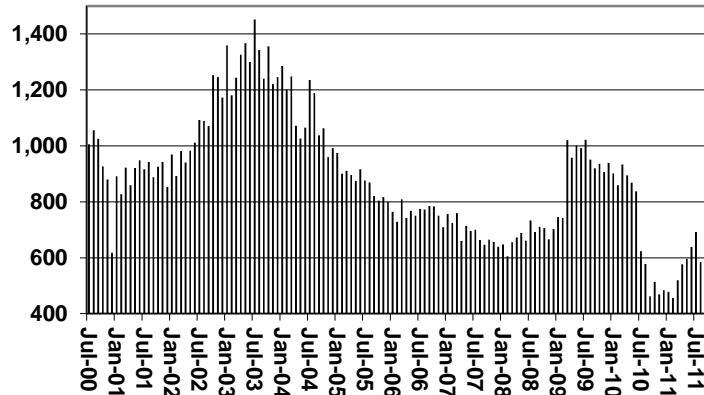
EXCLUDES: PRIOR MONTH NET TOTALS OF 447 CASES; 1,043 RECIPIENTS;\$26,354.

# CHART 1B

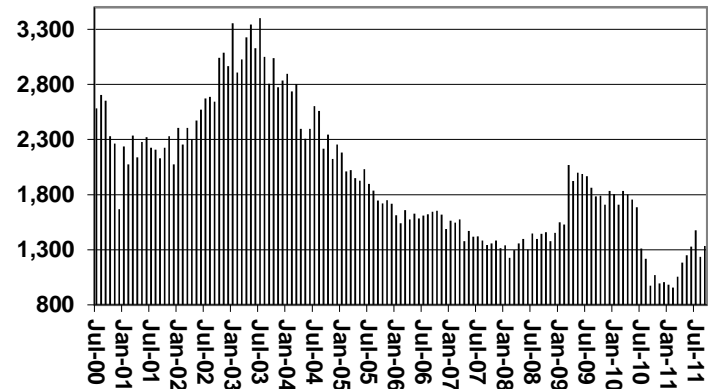
## CASH ASSISTANCE PROGRAM CASES WITH GRANT UNDER \$100

FOR 1999, 2000, 2001, 2002, 2003, 2004, 2005, 2006, 2007, 2008, 2009, 2010, & 2011

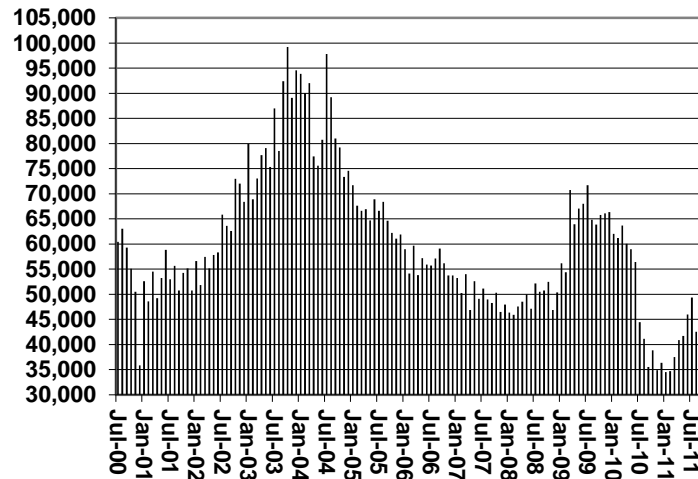
Cases



Recipients



Payments



Average Payment Per Recipient

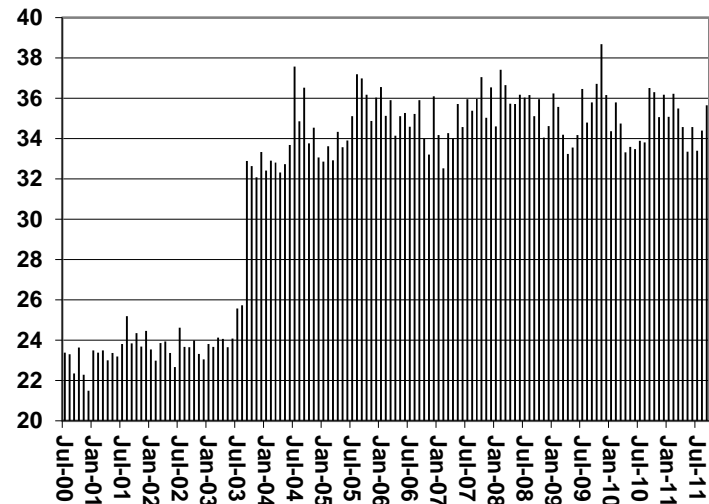


TABLE 1C 1/

CASH ASSISTANCE UNEMPLOYED PARENT PROGRAM: ARIZONA  
 CASES WITH GRANT UNDER \$100

	CHANGE FROM												
	SEPTEMBER 2011							AUGUST 2011			SEPTEMBER 2010		
	FAMILIES (CASES)	PERSONS (RECIP.)	ADULTS	CHILDREN	TOTAL PAYMENTS	AVERAGE PAYMENT/ CASE	AVERAGE PAYMENT/ RECIP.	FAMILIES (CASES)	PERSONS (RECIP.)	TOTAL PAYMENTS	FAMILIES (CASES)	PERSONS (RECIP.)	TOTAL PAYMENTS
ARIZONA	14	52	21	31	821	58.64	15.79	6	18	329	(14)	(28)	(589)
REGION													
MARICOPA	6	28	10	18	411	68.50	14.68	1	7	78	(17)	(38)	(748)
NORTHERN	0	0	0	0	0	0.00	0.00	(1)	(3)	(51)	(1)	(3)	(21)
APACHE	0	0	0	0	0	0.00	0.00	0	0	0	0	0	0
COCONINO	0	0	0	0	0	0.00	0.00	(1)	(3)	(51)	0	0	0
MOHAVE	0	0	0	0	0	0.00	0.00	0	0	0	(1)	(3)	(21)
NAVAJO	0	0	0	0	0	0.00	0.00	0	0	0	0	0	0
CENTRAL	3	9	4	5	121	40.33	13.44	2	4	105	2	6	103
GILA	0	0	0	0	0	0.00	0.00	0	0	0	0	0	0
LA PAZ	0	0	0	0	0	0.00	0.00	0	0	0	0	0	0
PINAL	2	5	2	3	99	49.50	19.80	1	0	83	1	2	81
YAVAPAI	1	4	2	2	22	22.00	5.50	1	4	22	1	4	22
YUMA	0	0	0	0	0	0.00	0.00	0	0	0	0	0	0
SOUTHERN	5	15	7	8	289	57.80	19.27	4	10	197	2	7	77
COCHISE	0	0	0	0	0	0.00	0.00	0	0	0	0	0	0
GRAHAM	0	0	0	0	0	0.00	0.00	0	0	0	0	0	0
GREENLEE	0	0	0	0	0	0.00	0.00	0	0	0	0	0	0
PIMA	5	15	7	8	289	57.80	19.27	4	10	197	2	7	77
SANTA CRUZ	0	0	0	0	0	0.00	0.00	0	0	0	0	0	0

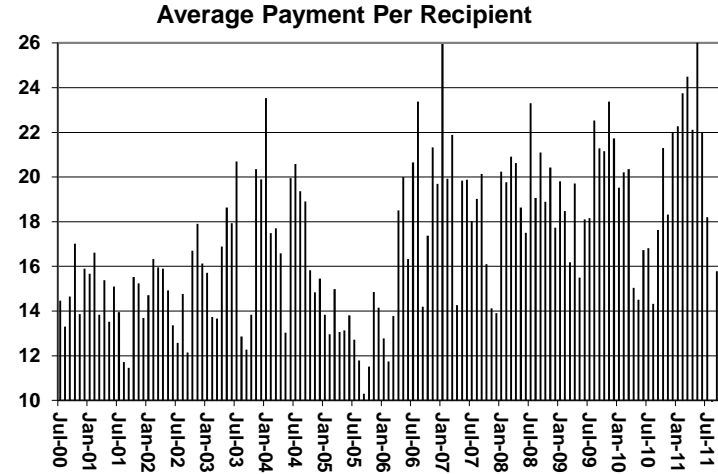
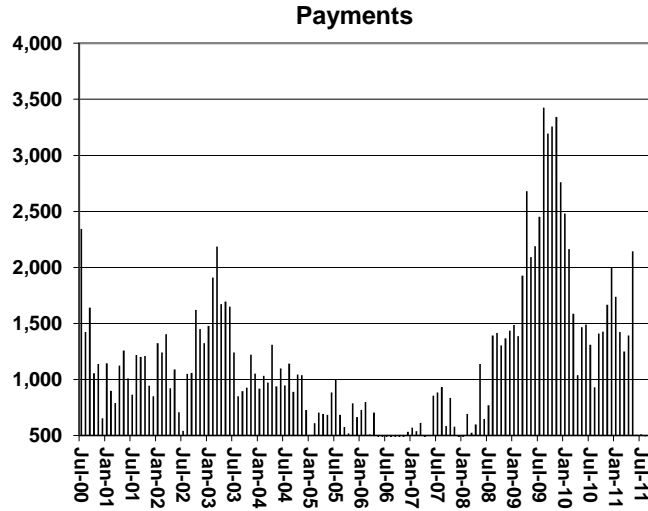
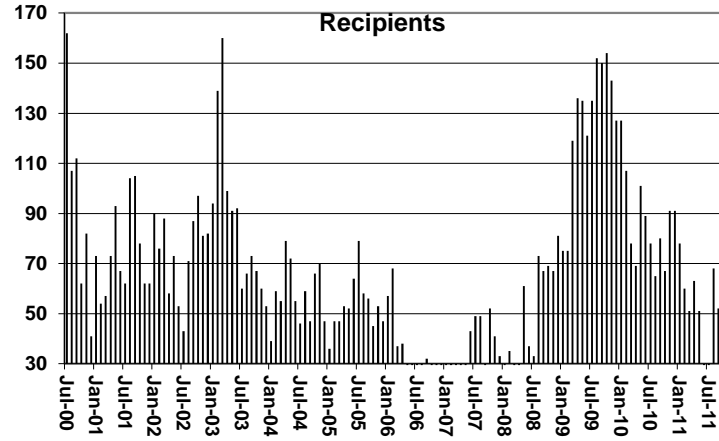
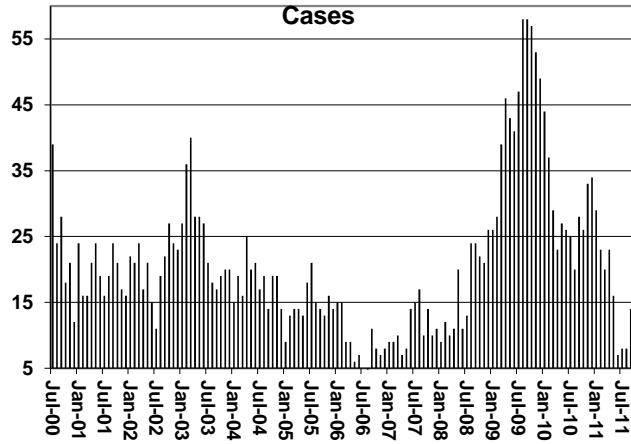
EXCLUDES: PRIOR MONTH NET TOTALS OF 22 CASES; 89 RECIPIENTS; \$1,205.

# CHART 1C

## CASH ASSISTANCE UNEMPLOYED PARENT PROGRAM

### CASES WITH GRANT UNDER \$100

FOR 1999, 2000, 2001, 2002, 2003, 2004, 2005, 2006, 2007, 2008, 2009, 2010, & 2011



**TABLE 4**  
**TUBERCULOSIS CONTROL: ARIZONA 1/**

	CHANGE FROM											
	SEPTEMBER 2011					AUGUST 2011			SEPTEMBER 2010			
	NUMBER OF CASES	PERSONS (RECIP.)	TOTAL PAYMENTS	AVERAGE PAYMENT/ CASE	AVERAGE PAYMENT/ RECIP.	NUMBER OF CASES	PERSONS (RECIP.)	TOTAL PAYMENTS	NUMBER OF CASES	PERSONS (RECIP.)	TOTAL PAYMENTS	
ARIZONA	5	5	735	147.00	147.00	(1)	(1)	(104)	4	4	562	
REGION												
MARICOPA	5	5	735	147.00	147.00	(1)	(1)	(104)	4	4	562	
NORTHERN	0	0	0	0.00	0.00	0	0	0	0	0	0	
APACHE	0	0	0	0.00	0.00	0	0	0	0	0	0	
COCONINO	0	0	0	0.00	0.00	0	0	0	0	0	0	
MOHAVE	0	0	0	0.00	0.00	0	0	0	0	0	0	
NAVAJO	0	0	0	0.00	0.00	0	0	0	0	0	0	
CENTRAL	0	0	0	0.00	0.00	0	0	0	0	0	0	
GILA	0	0	0	0.00	0.00	0	0	0	0	0	0	
LA PAZ	0	0	0	0.00	0.00	0	0	0	0	0	0	
PINAL	0	0	0	0.00	0.00	0	0	0	0	0	0	
YAVAPAI	0	0	0	0.00	0.00	0	0	0	0	0	0	
YUMA	0	0	0	0.00	0.00	0	0	0	0	0	0	
SOUTHERN	0	0	0	0.00	0.00	0	0	0	0	0	0	
COCHISE	0	0	0	0.00	0.00	0	0	0	0	0	0	
GRAHAM	0	0	0	0.00	0.00	0	0	0	0	0	0	
GREENLEE	0	0	0	0.00	0.00	0	0	0	0	0	0	
PIMA	0	0	0	0.00	0.00	0	0	0	0	0	0	
SANTA CRUZ	0	0	0	0.00	0.00	0	0	0	0	0	0	

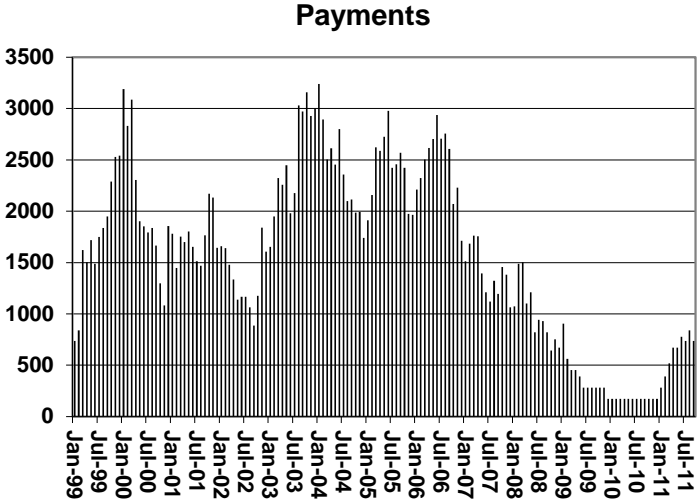
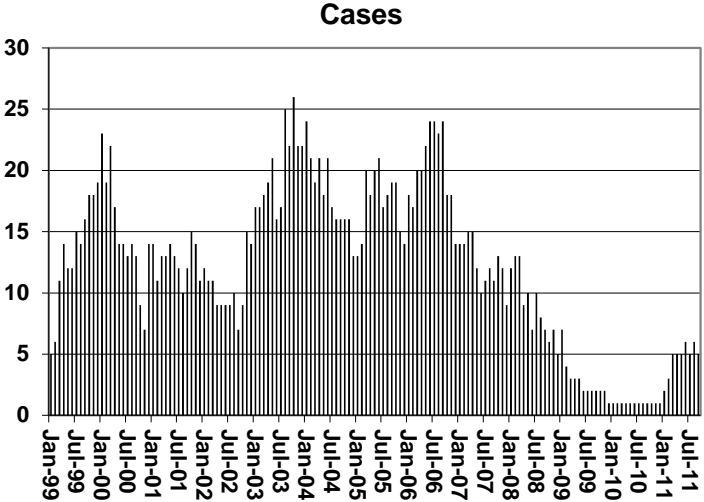
1/EXCLUDES: PRIOR MONTH NET TOTALS OF : 0 CASES; 0 RECIPIENTS; \$0.

# CHART 4

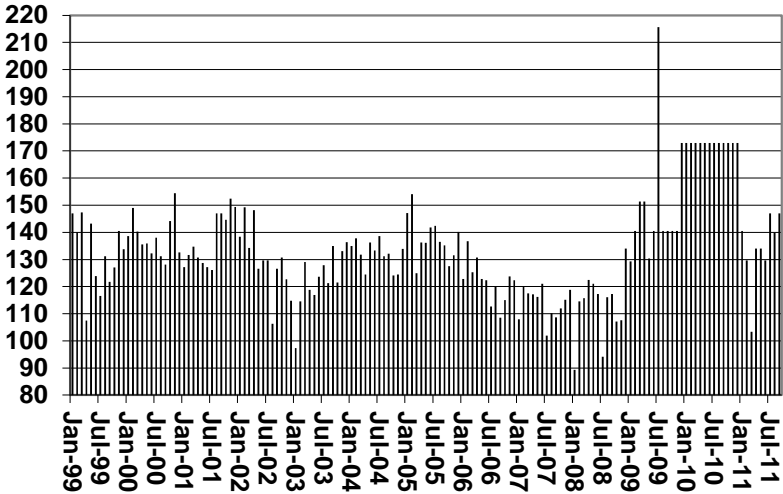
## TUBERCULOSIS CONTROL PROGRAM

### COMPARISON OF CASES, PAYMENTS & AVERAGE PAYMENTS

FOR 1999, 2000, 2001, 2002, 2003, 2004, 2005, 2006, 2007, 2008, 2009, 2010, & 2011



### Average Payment Per Case



**TABLE 6**  
**SUPPLEMENTAL NUTRITION ASSISTANCE PROGRAM: ARIZONA 1/**

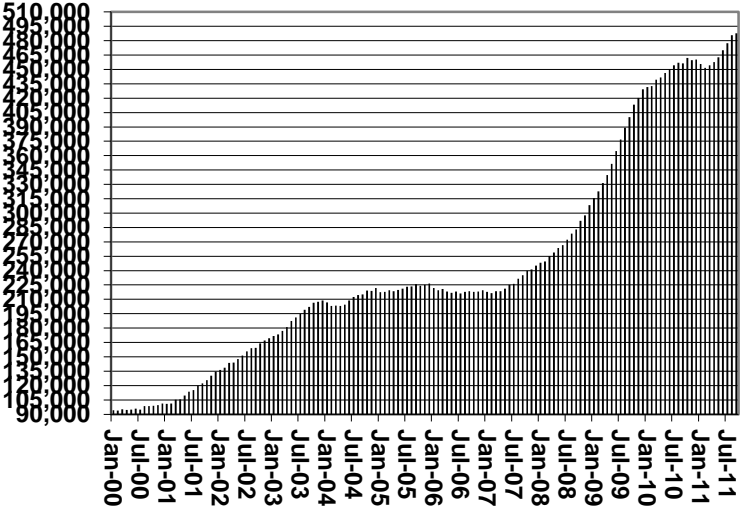
	CHANGE FROM												
	SEPTEMBER 2011							AUGUST 2011			SEPTEMBER 2010		
	HOUSEHOLDS	PERSONS	ADULTS	CHILDREN	TOTAL PAYMENTS ISSUANCE	AVERAGE PAYMT./ HOUSEHOLD	AVERAGE PAYMT./ PERSON	HOUSEHOLDS	PERSONS	TOTAL PAYMENTS ISSUANCE	HOUSEHOLDS	PERSONS	TOTAL PAYMENTS ISSUANCE
ARIZONA	487,866	1,131,358	582,464	548,894	143,185,399	293.49	126.56	2,298	8,025	414,849	31,399	86,948	9,737,031
REGION													
MARICOPA	261,905	612,303	294,945	317,358	78,339,358	299.11	127.94	1,715	5,680	424,704	15,507	48,263	5,931,591
NORTHERN	55,973	136,142	76,600	59,542	16,798,867	300.12	123.39	278	618	(23,398)	3,522	8,382	744,293
APACHE	10,617	29,028	15,834	13,194	3,553,359	334.69	122.41	28	(84)	(38,199)	762	1,532	126,496
COCONINO	9,995	24,836	13,303	11,533	3,034,158	303.57	122.17	(6)	(11)	(11,279)	416	1,030	79,868
MOHAVE	21,378	45,780	27,446	18,334	5,720,186	267.57	124.95	187	507	36,150	1,261	3,163	312,069
NAVAJO	13,983	36,498	20,017	16,481	4,491,164	321.19	123.05	69	206	(10,070)	1,083	2,657	225,860
CENTRAL	65,227	155,761	84,455	71,306	19,105,581	292.91	122.66	483	1,372	94,011	5,458	14,798	1,399,322
GILA	6,200	13,603	7,886	5,717	1,753,199	282.77	128.88	(46)	(108)	(16,443)	265	767	56,937
LA PAZ	2,060	4,259	2,477	1,782	541,308	262.77	127.10	(10)	(35)	(9,772)	113	320	34,612
PINAL	23,645	58,896	30,484	28,412	7,412,436	313.49	125.86	148	529	45,376	2,463	6,833	744,260
YAVAPAI	15,760	32,107	19,232	12,875	3,945,058	250.32	122.87	179	449	40,697	1,382	3,039	310,362
YUMA	17,562	46,896	24,376	22,520	5,453,580	310.53	116.29	212	537	34,153	1,235	3,839	253,151
SOUTHERN	104,761	227,152	126,464	100,688	28,941,593	276.26	127.41	(178)	355	(80,468)	6,912	15,505	1,661,825
COCHISE	11,046	23,921	13,697	10,224	2,917,011	264.08	121.94	(68)	(131)	(38,895)	800	1,670	131,537
GRAHAM	3,562	8,132	4,525	3,607	1,029,915	289.14	126.65	(53)	(116)	(20,696)	212	332	22,684
GREENLEE	530	1,153	663	490	149,177	281.47	129.38	7	17	2,072	36	82	14,523
PIMA	84,870	181,247	101,068	80,179	23,333,402	274.93	128.74	(115)	443	(33,759)	5,416	12,271	1,370,480
SANTA CRUZ	4,753	12,699	6,511	6,188	1,512,088	318.13	119.07	51	142	10,810	448	1,150	122,601

1/EXCLUDES: PRIOR MONTH NET TOTALS OF : 7,306 CASES; 18,701 REC P ENTS; \$1,153,526.  
 AGED CANCELATIONS: 13,307 CASES 16,468 RECIP ENTS \$765,965.  
 SNAP CONVERSIONS: 0 CASES 0 REC P ENTS \$0.  
 SNAP CH LD ONLY: 62,048 CASES; 147,070 REC P ENTS; \$22,166,074.  
 SNAP ZERO PAY: 5,096 CASES; 19,030 RECIP ENTS.

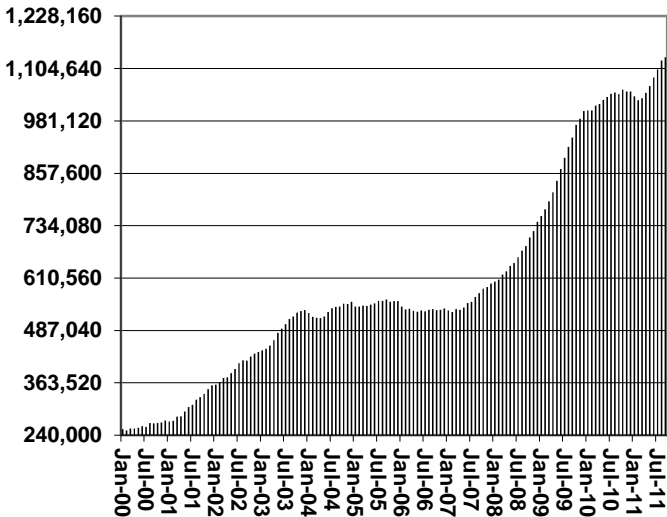
# CHART 6

## SUPPLEMENTAL NUTRITION ASSISTANCE PROGRAM (SNAP) COMPARISON OF HOUSEHOLDS, RECIPIENTS, PAYMENTS & AVERAGE PAYMENTS FOR 1999, 2000, 2001, 2002, 2003, 2004, 2005, 2006, 2007, 2008, 2009, 2010, & 2011

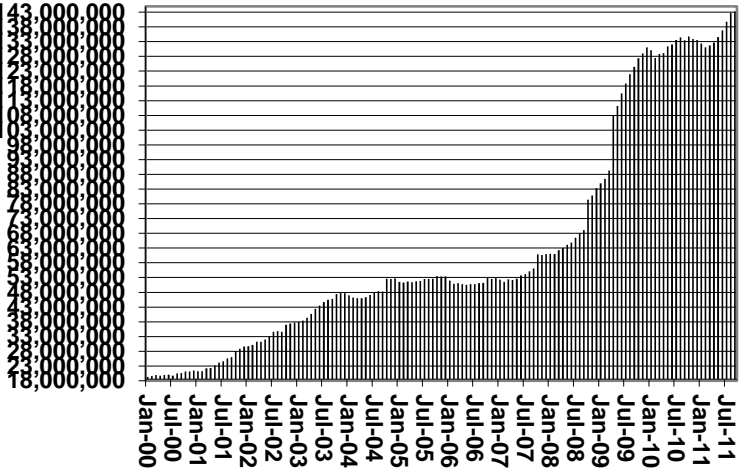
**Households**



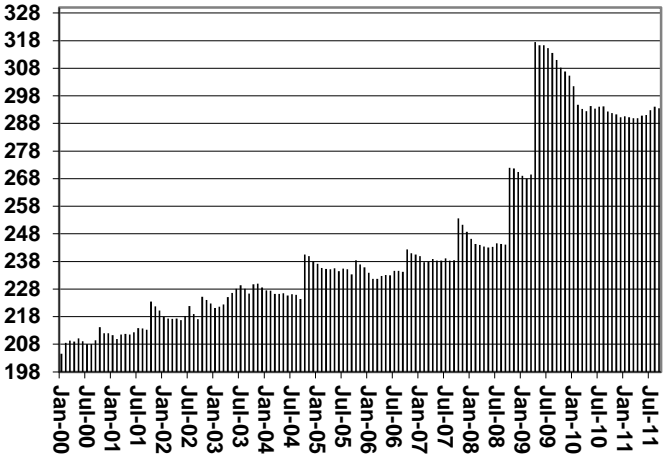
**Recipients**



**Payments**



**Average Payment Per Household**





**TABLE 7A**  
**MEDICAL ASSISTANCE PROGRAM**  
**RECIPIENTS**  
**SEPTEMBER 2011**

	SOBRA WOMAN 133% FPL	SOBRA CHILD	ADULT W/O CHILD 100% FPL	FOSTER CARE	1931 36% FPL	FEDERAL EMERGENCY SERVICES	INFANTS	ADULT W/O CHILD 40% FPL	MEDICAL W/SPEND DOWN	SOBRA WOMAN 100% FPL	SOBRA CHILD 100% FPL	TRANSITIONAL MEDICAL T1 - T4	1931 100% FPL	YATI	OTHER	TOTAL CASES
ARIZONA	11,414	68,376	54,112	13,486	365,484	56,292	46,330	152,942	1,055	4,291	240,998	44,318	126,318	337	29,732	1,215,485
REGION																
MARICOPA	6,441	39,076	26,822	7,409	204,699	44,634	27,572	78,038	563	2,347	142,576	23,324	65,369	179	15,503	684,552
NORTHERN	1,236	7,395	6,416	673	46,142	990	4,670	23,042	170	509	23,828	5,134	15,002	18	3,112	138,337
APACHE	206	1,483	939	36	11,874	61	893	5,371	33	85	4,230	884	2,680	0	420	29,195
COCONINO	273	1,390	1,273	137	8,757	380	1,075	4,026	18	107	4,944	1,121	3,067	15	448	27,031
MOHAVE	432	2,220	2,652	354	12,222	349	1,434	7,142	92	201	8,837	1,788	5,416	2	1,653	44,794
NAVAJO	325	2,302	1,552	146	13,289	200	1,268	6,503	27	116	5,817	1,341	3,839	1	591	37,317
CENTRAL	1,696	9,108	8,040	1,576	47,692	3,867	6,028	19,767	117	620	30,759	6,627	19,450	37	4,523	159,907
GILA	117	575	639	101	4,849	106	472	2,333	20	43	1,967	499	1,340	3	338	13,402
LA PAZ	36	221	230	25	1,350	122	154	683	1	14	635	166	368	0	166	4,171
PINAL	564	3,988	2,352	607	20,360	1,191	2,285	7,859	33	213	11,193	2,120	6,462	14	1,399	60,640
YAVAPAI	381	1,694	2,299	536	8,119	1,076	1,172	4,451	35	112	6,273	1,756	4,022	17	1,248	33,191
YUMA	598	2,630	2,520	307	13,014	1,372	1,945	4,441	28	238	10,691	2,086	7,258	3	1,372	48,503
SOUTHERN	2,041	12,797	12,834	3,828	66,951	6,801	8,060	32,095	205	815	43,835	9,233	26,497	103	6,594	232,689
COCHISE	225	1,249	1,557	243	7,099	414	800	2,894	28	93	4,482	872	2,843	7	918	23,724
GRAHAM	93	453	423	77	2,841	30	361	1,301	11	33	1,401	371	864	1	178	8,438
GREENLEE	11	50	60	9	456	4	57	211	2	3	247	31	103	0	37	1,281
P MA	1,602	10,376	10,002	3,465	52,912	5,948	6,394	26,594	157	634	34,619	7,453	20,628	95	4,969	185,848
SANTA CRUZ	110	669	792	34	3,643	405	448	1,095	7	52	3,086	506	2,059	0	492	13,398

**TABLE 7B**  
**MEDICAL ASSISTANCE PROGRAM**  
**RECIPIENTS**

**CHANGE FROM**  
**AUGUST 2011**

	SOBRA WOMAN 133% FPL	SOBRA CHILD	ADULT W/O CHILD 100% FPL	FOSTER CARE	1931 36% FPL	FEDERAL EMERGENCY SERVICES	INFANTS	ADULT W/O CHILD 40% FPL	MEDICAL W/SPEND DOWN	SOBRA WOMAN 100% FPL	SOBRA CHILD 100% FPL	TRANSITIONAL MEDICAL T1 - T4	1931 100% FPL	YATI	OTHER	TOTAL CASES
ARIZONA	(90)	(1,782)	(4,280)	188	779	1,242	143	(10,639)	(1,197)	30	738	1,478	(993)	7	(130)	(14,506)
REGION																
MARICOPA	(13)	(926)	(2,012)	167	723	1,175	135	(5,437)	(604)	38	870	699	(515)	(1)	(14)	(5,715)
NORTHERN	(32)	(304)	(523)	(5)	(26)	(6)	(34)	(1,495)	(197)	(33)	(108)	360	(174)	1	(19)	(2,595)
APACHE	(8)	(78)	(63)	(1)	(82)	(10)	(9)	(308)	(43)	(11)	8	7	(47)	0	(11)	(656)
COCONINO	(4)	(91)	(114)	1	82	6	(4)	(346)	(24)	(20)	(43)	121	(52)	1	(16)	(503)
MOHAVE	(12)	(60)	(199)	(9)	(13)	(8)	(5)	(441)	(89)	(6)	10	95	(15)	0	9	(743)
NAVAJO	(8)	(75)	(147)	4	(13)	6	(16)	(400)	(41)	4	(83)	137	(60)	0	(1)	(693)
CENTRAL	(32)	(204)	(750)	9	106	56	(2)	(1,334)	(168)	23	37	242	(141)	0	(2)	(2,160)
GILA	7	(24)	(45)	1	(93)	2	(12)	(151)	(18)	2	14	38	(13)	1	(6)	(297)
LA PAZ	2	(18)	(11)	3	(41)	(9)	8	(53)	(3)	0	(36)	51	(31)	0	(2)	(140)
PINAL	(11)	(50)	(265)	(3)	242	(7)	(9)	(520)	(49)	(4)	74	(94)	32	(1)	27	(638)
YAVAPAI	(26)	(61)	(210)	11	40	8	(4)	(322)	(45)	(6)	(76)	118	(148)	0	(14)	(735)
YUMA	(4)	(51)	(219)	(3)	(42)	62	15	(288)	(53)	31	61	129	19	0	(7)	(350)
SOUTHERN	(13)	(348)	(995)	17	(24)	17	44	(2,373)	(228)	2	(61)	177	(163)	7	(95)	(4,036)
COCHISE	4	(75)	(104)	0	(4)	2	2	(217)	(32)	(1)	(17)	20	(6)	1	(16)	(443)
GRAHAM	(9)	(3)	(27)	2	(73)	3	(3)	(118)	(13)	0	(8)	7	(10)	0	1	(251)
GREENLEE	1	1	(1)	1	(14)	1	3	(13)	(4)	(3)	7	5	(4)	0	0	(20)
P MA	(9)	(275)	(812)	15	3	5	27	(1,971)	(172)	4	(29)	187	(152)	6	(80)	(3,253)
SANTA CRUZ	0	4	(51)	(1)	64	6	15	(54)	(7)	2	(14)	(42)	9	0	0	(69)

**TABLE 7C**  
**MEDICAL ASSISTANCE PROGRAM**  
**RECIPIENTS**

**CHANGE FROM**  
**SEPTEMBER 2010**

	SOBRA WOMAN 133% FPL	SOBRA CHILD	ADULT W/O CHILD 100% FPL	FOSTER CARE	1931 36% FPL	FEDERAL EMERGENCY SERVICES	INFANTS	ADULT W/O CHILD 40% FPL	MEDICAL W/SPEND DOWN	SOBRA WOMAN 100% FPL	SOBRA CHILD 100% FPL	TRANSITIONAL MEDICAL T1 - T4	3E 1931 100% FPL	YATI	OTHER	TOTAL CASES
ARIZONA	449	(163)	(7,866)	1,429	27,003	3,007	(1,267)	(17,714)	(6,221)	610	13,402	972	4,306	(21)	2,029	19,955
REGION																
MARICOPA	559	693	(3,249)	1,117	18,105	3,134	(916)	(8,691)	(3,420)	502	9,986	172	2,680	(21)	1,239	21,890
NORTHERN	51	(319)	(976)	33	1,687	(177)	(226)	(2,525)	(794)	(41)	490	(332)	330	(5)	186	(2,618)
APACHE	10	(67)	(115)	1	352	(29)	(76)	(401)	(89)	(22)	(15)	(140)	23	0	25	(543)
COCONINO	(8)	(62)	(302)	6	240	40	3	(716)	(138)	4	(17)	(32)	32	1	34	(915)
MOHAVE	47	(116)	(352)	25	602	(132)	(69)	(1,009)	(369)	10	518	(180)	254	(3)	123	(651)
NAVAJO	2	(74)	(207)	1	493	(56)	(84)	(399)	(198)	(33)	4	20	21	(3)	4	(509)
CENTRAL	(96)	(389)	(1,631)	76	3,776	(277)	0	(2,376)	(1,043)	24	1,260	616	942	(1)	189	1,070
GILA	(6)	(154)	(123)	(2)	230	(26)	(69)	(330)	(77)	0	44	124	8	3	(3)	(381)
LA PAZ	(21)	(48)	(53)	8	175	5	15	(186)	(25)	2	(100)	(30)	(66)	0	(2)	(326)
PINAL	(52)	(33)	(468)	(10)	2,352	28	86	(462)	(375)	20	839	264	588	1	141	2,919
YAVAPAI	(18)	(110)	(435)	78	705	(96)	(23)	(726)	(283)	(2)	67	93	53	(2)	(28)	(727)
YUMA	1	(44)	(552)	2	314	(188)	(9)	(672)	(283)	4	410	165	359	(3)	81	(415)
SOUTHERN	(65)	(148)	(2,010)	203	3,435	327	(125)	(4,122)	(964)	125	1,666	516	354	6	415	(387)
COCHISE	(15)	(15)	(154)	4	157	(41)	(31)	(388)	(126)	20	187	(100)	59	4	52	(387)
GRAHAM	(19)	(47)	(128)	7	97	(12)	23	(123)	(49)	6	(24)	30	(30)	(1)	16	(254)
GREENLEE	(6)	(13)	(2)	1	11	1	3	8	(4)	(1)	24	(12)	(24)	(2)	(1)	(17)
PIMA	(33)	(60)	(1,588)	185	2,987	456	(122)	(3,629)	(743)	114	1,512	617	273	6	328	303
SANTA CRUZ	8	(13)	(138)	6	183	(77)	2	10	(42)	(14)	(33)	(19)	76	(1)	20	(32)

# CHART 7

## MEDICAL ASSISTANCE PROGRAM COMPARISON OF RECIPIENTS

FOR 1999, 2000, 2001, 2002, 2003, 2004, 2005, 2006, 2007, 2008, 2009, 2010, & 2011

Total Recipients

