



DEPARTMENT OF ECONOMIC SECURITY

Your Partner For A Stronger Arizona

State of Arizona

Department of Economic Security

Family Assistance Administration

Statistical Bulletin

Bcj Ya Vyž201%

Phone: (602) 542-3678

<https://www.azdes.gov/appreports.aspx>

**** STATISTICAL BULLETIN ****
ARIZONA DEPARTMENT OF ECONOMIC SECURITY
FAMILY ASSISTANCE ADMINISTRATION
BOX 6123, PHOENIX, ARIZONA 85005
PHONE (602) 542-3678

NOVEMBER 2011

THIS ISSUE OF THE STATISTICAL BULLETIN COMPARES NOVEMBER 2011 DATA FOR EACH OF THE INDICATED PROGRAMS WITH THE INFORMATION FOR OCTOBER 2011 AND NOVEMBER 2010. STATEWIDE SUMMARIES OF ACTIVITY WITHIN EACH OF THE SPECIFIC PROGRAMS FOR THIS REPORT PERIOD ARE DISCUSSED BELOW. THE TABLES COMPARE CURRENT AND PRIOR MONTH DATA. DISTRICT AND COUNTY COMPARISONS ARE PROVIDED WITHIN THIS BULLETIN

TANF SUMMARY

COMPARING TO OCTOBER 2011, NOVEMBER 2011 CASES INCREASED BY 60 (0.35%) TO 17,027. RECIPIENTS INCREASED BY 143 (0.37%) TO 38,313. PAYMENTS INCREASED BY \$8,341 (0.23%) TO \$3,559,159. AVERAGE PAYMENT PER CASE DECREASED BY \$0.25 (0.12%) TO \$0.00. PAYMENT PER RECIPIENT DECREASED BY \$0.13 (0.14%) TO \$92.90.

COMPARING TO NOVEMBER 2010, NOVEMBER 2011 CASES DECREASED BY 2,720 (13.77%). RECIPIENTS DECREASED BY 6,636 (14.76%). TOTAL PAYMENTS DECREASED BY \$663,847 (15.72%). THE AVERAGE PAYMENT PER CASE DECREASED BY \$4.83 (2.26%). THE AVERAGE PAYMENT PER RECIPIENT DECREASED BY \$1.05 (1.12%).

CASH ASSISTANCE (CA)

COMPARING TO OCTOBER 2011, NOVEMBER 2011 CASES INCREASED BY 127 (0.80%) TO 16,038. RECIPIENTS INCREASED BY 334 (0.95%) TO 35,514. PAYMENTS INCREASED BY \$19,090 (0.56%) TO \$3,398,036. AVERAGE PAYMENT PER CASE DECREASED BY \$0.50 (0.24%) TO \$211.87. PAYMENT PER RECIPIENT DECREASED BY \$0.37 (0.39%) TO \$95.68.

COMPARING TO NOVEMBER 2010, NOVEMBER 2011 CASES DECREASED BY 2,600 (13.95%). RECIPIENTS DECREASED BY 6,125 (14.71%). TOTAL PAYMENTS DECREASED BY \$617,965 (15.39%). THE AVERAGE PAYMENT PER CASE DECREASED BY \$3.60 (1.67%). THE AVERAGE PAYMENT PER RECIPIENT DECREASED BY \$0.77 (0.80%).

CASH ASSISTANCE UNEMPLOYED PARENT PROGRAM (CA-UP)

COMPARING TO OCTOBER 2011, NOVEMBER 2011 CASES DECREASED BY 16 (3.85%) TO 400. RECIPIENTS DECREASED BY 40 (2.44%) TO 1,597. PAYMENTS DECREASED BY \$4,411 (3.59%) TO \$118,556. AVERAGE PAYMENT PER CASE INCREASED BY \$0.80 (0.27%) TO \$296.39. PAYMENT PER RECIPIENT DECREASED BY \$0.88 (1.17%) TO \$74.24.

COMPARING TO NOVEMBER 2010, NOVEMBER 2011 CASES DECREASED BY 207 (34.10%). RECIPIENTS DECREASED BY 627 (28.19%). TOTAL PAYMENTS DECREASED BY \$51,883 (30.44%). THE AVERAGE PAYMENT PER CASE INCREASED BY \$15.61 (5.56%). THE AVERAGE PAYMENT PER RECIPIENT DECREASED BY \$2.40 (3.13%).

CASH ASSISTANCE WITH GRANT UNDER \$100 (CA-MOE)

COMPARING TO OCTOBER 2011, NOVEMBER 2011 CASES DECREASED BY 45 (7.15%) TO 584. RECIPIENTS DECREASED BY 132 (10.02%) TO 1,185. PAYMENTS DECREASED BY \$6,045 (12.53%) TO \$42,199. AVERAGE PAYMENT PER CASE DECREASED BY \$4.44 (5.79%) TO \$72.26. AVERAGE PAYMENT PER RECIPIENT DECREASED BY \$1.02 (2.78%) TO \$35.61.

COMPARING TO NOVEMBER 2010, NOVEMBER 2011 CASES INCREASED BY 115 (24.52%). RECIPIENTS INCREASED BY 190 (19.10%). TOTAL PAYMENTS INCREASED BY \$7,300 (20.92%). THE AVERAGE PAYMENT PER CASE DECREASED BY \$2.15 (2.89%). THE AVERAGE PAYMENT PER RECIPIENT INCREASED BY \$0.54 (1.54%).

CASH ASSISTANCE UNEMPLOYED PARENT PROGRAM WITH GRANT UNDER \$100 (CA-UP-MOE) NEW PROGRAM STARTING 7/01

COMPARING TO OCTOBER 2011, NOVEMBER 2011 CASES DECREASED BY 6 (54.55%) TO 5. RECIPIENTS DECREASED BY 19 (52.78%) TO 17. PAYMENTS DECREASED BY \$293 (44.33%) TO \$368. AVERAGE PAYMENT PER CASE INCREASED BY \$13.51 (22.48%) TO \$73.60. PAYMENT PER RECIPIENT INCREASED BY \$3.29 (17.92%) TO \$21.65.

COMPARING TO NOVEMBER 2010, NOVEMBER 2011 CASES DECREASED BY 28 (84.85%). RECIPIENTS DECREASED BY 74 (11.20%). TOTAL PAYMENTS DECREASED BY \$1,299 (77.92%). THE AVERAGE PAYMENT PER CASE INCREASED BY \$23.08 (45.68%). THE AVERAGE PAYMENT PER RECIPIENT INCREASED BY \$3.33 (18.18%).

TUBERCULOSIS CONTROL PROGRAM (TC)

COMPARING TO OCTOBER 2011, NOVEMBER 2011 CASES INCREASED BY 1 (14.29%) TO 8. RECIPIENTS INCREASED BY 1 (14.29%) TO 8. PAYMENTS INCREASED BY \$108 (10.63%) TO \$1,124. AVERAGE PAYMENT PER CASE INCREASED BY \$63.89 (44.02%) TO \$209.03. AVERAGE PAYMENT PER RECIPIENT DECREASED BY \$4.64 (3.20%) TO \$140.50.

COMPARING TO NOVEMBER 2010, NOVEMBER 2011 CASES INCREASED BY 7 (700.00%). RECIPIENTS INCREASED BY 7 (700.00%). TOTAL PAYMENTS INCREASED BY \$951 (549.71%). THE AVERAGE PAYMENT PER CASE INCREASED BY \$36.03 (20.83%). THE AVERAGE PAYMENT PER RECIPIENT DECREASED BY \$32.50 (18.79%).

SUPPLEMENTAL NUTRITION ASSISTANCE PROGRAM (SNAP)

COMPARING TO OCTOBER 2011, NOVEMBER 2011 SUPPLEMENTAL NUTRITION ASSISTANCE HOUSEHOLDS DECREASED BY 1,089 (0.22%) TO 489,396. PERSONS RECEIVING SUPPLEMENTAL NUTRITION ASSISTANCE DECREASED BY 1,625 (0.14%) TO 1,136,595. TOTAL COUPON ISSUANCE DECREASED BY \$465,527 (0.32%) TO \$144,048,129. THE AVERAGE HOUSEHOLD ALLOTMENT DECREASED BY \$0.29 (0.10%) TO \$294.34. THE AVERAGE ALLOTMENT PER PERSON DECREASED BY \$0.22 (0.18%) TO \$126.74.

COMPARING TO NOVEMBER 2010, NOVEMBER 2011 SUPPLEMENTAL NUTRITION ASSISTANCE HOUSEHOLDS INCREASED BY 29,796 (6.48%). PERSONS RECEIVING SUPPLEMENTAL NUTRITION ASSISTANCE INCREASED BY 86,414 (8.23%). TOTAL COUPON ISSUANCE INCREASED BY \$10,184,879 (7.61%). THE AVERAGE ALLOTMENT PER HOUSEHOLD INCREASED BY \$3.08 (1.06%). THE AVERAGE ALLOTMENT PER PERSON DECREASED BY \$0.73 (0.57%).

MEDICAL ASSISTANCE PROGRAM (MA) NEW TABLE INCLUDES PROP. 204 CATEGORIES

COMPARING TO OCTOBER 2011, NOVEMBER 2011 TOTAL RECIPIENTS TOTAL RECIPIENTS DECREASED BY 18,692 (1.55%). SOBRA WOMEN AT 140% FPL DECREASED BY 262 (2.28%). SOBRA CHILDREN DECREASED BY 6,785 (10.42%). ADULTS W/O CHILD AT 100% DECREASED BY 4,328 (8.68%). FOSTER CARE INCREASED BY 219 (0.00%). 1931 AT 36% FPL INCREASED BY 3,167 (0.00%). EMERGENCY SERVICES INCREASED BY 670 (1.16%). INFANTS DECREASED BY 369 (0.80%). ADULT W/O CHILD AT 140% DECREASED BY 10,644 (7.49%). MEDICAL W/SPEND DOWN DECREASED BY 12 (100.00%). SOBRA WOMAN AT 100% DECREASED BY 140 (3.25%). SOBRA CHILD AT 100% DECREASED BY 468 (0.19%). TRANSITIONAL MEDICAL INCREASED BY 2,138 (4.59%). 1931 AT 100% DECREASED BY 1,670 (1.33%). YATI INCREASED BY 4 (1.18%). ALL OTHER CATEGORIES DECREASED BY 212 (0.71%).

COMPARING TO NOVEMBER 2010, NOVEMBER 2011 TOTAL RECIPIENTS TOTAL RECIPIENTS DECREASED BY 24,148 (2.00%). SOBRA WOMEN AT 140% FPL INCREASED BY 414 (3.83%). SOBRA CHILDREN DECREASED BY 12,552 (17.70%). ADULTS W/O CHILD AT 100% DECREASED BY 18,482 (28.86%). FOSTER CARE INCREASED BY 1,614 (13.22%). 1931 AT 36% FPL INCREASED BY 32,997 (9.72%). EMERGENCY SERVICES INCREASED BY 6,980 (13.63%). INFANTS DECREASED BY 1,354 (2.88%). ADULT W/O CHILD AT 140% DECREASED BY 41,535 (24.00%). MEDICAL W/SPEND DOWN DECREASED BY 7,174 (100.00%). SOBRA WOMAN AT 100% INCREASED BY 352 (9.22%). SOBRA CHILD AT 100% INCREASED BY 12,527 (5.47%). TRANSITIONAL MEDICAL INCREASED BY 3,388 (7.48%). 1931 AT 100% DECREASED BY 2,679 (2.12%). YATI INCREASED BY 8 (2.38%). ALL OTHER CATEGORIES INCREASED BY 1,348 (4.80%).

TANF SUMMARY

TABLES 1, 1A, 1B, & 1C: ARIZONA 1/

	NOVEMBER 2011								OCTOBER 2011			NOVEMBER 2010		
	FAMILIES (CASES)	PERSONS (RECIP.)	ADULTS	CHILDREN	TOTAL PAYMENTS	AVERAGE	AVERAGE	TOTAL PAYMENTS	FAMILIES (CASES)	PERSONS (RECIP.)	TOTAL PAYMENTS	FAMILIES (CASES)	PERSONS (RECIP.)	TOTAL PAYMENTS
						PAYMENT/ CASE	PAYMENT/ RECIP.							
ARIZONA	17,027	38,313	10,137	28,176	3,559,159	209.03	92.90		60	143	8,341	(2,720)	(6,636)	(663,847)
REGION														
MARICOPA	10,180	23,296	5,945	17,351	2,124,772	208.72	91.21		15	44	(2,535)	(2,066)	(5,258)	(502,305)
NORTHERN	1,055	2,398	706	1,692	217,863	206.51	90.85		18	40	3,787	(19)	51	(4,565)
APACHE	42	108	35	73	9,362	222.90	86.69		8	19	1,405	3	34	2,011
COCONINO	71	169	51	118	14,622	205.94	86.52		7	10	988	(14)	(37)	(3,639)
MOHAVE	612	1,323	374	949	125,581	205.20	94.92		2	9	2,144	(7)	43	(1,074)
NAVAJO	330	798	246	552	68,298	206.96	85.59		1	2	(750)	(1)	11	(1,863)
CENTRAL	2,017	4,381	1,221	3,160	419,240	207.85	95.70		28	51	6,068	(331)	(837)	(88,564)
GILA	451	978	345	633	106,756	236.71	109.16		15	48	3,261	(71)	(186)	(24,026)
LA PAZ	61	136	41	95	11,746	192.56	86.37		(1)	5	(87)	(29)	(75)	(7,071)
PINAL	736	1,569	383	1,186	145,352	197.49	92.64		(16)	(43)	(3,149)	(194)	(520)	(44,775)
YAVAPAI	302	624	144	480	59,324	196.44	95.07		18	35	3,974	10	51	2,021
YUMA	467	1,074	308	766	96,062	205.70	89.44		12	6	2,069	(47)	(107)	(14,713)
SOUTHERN	3,775	8,238	2,265	5,973	797,284	211.20	96.78		(1)	8	1,021	(304)	(592)	(68,413)
COCHISE	360	725	172	553	73,226	203.41	101.00		18	37	2,503	9	42	567
GRAHAM	223	469	160	309	51,661	231.66	110.15		(8)	(17)	(1,862)	12	62	2,050
GREENLEE	19	49	15	34	4,097	215.63	83.61		4	17	800	1	9	809
PIMA	3,045	6,691	1,855	4,836	641,219	210.58	95.83		(35)	(81)	(4,518)	(336)	(767)	(76,011)
SANTA CRUZ	128	304	63	241	27,081	211.57	89.08		20	52	4,098	10	62	4,172

1/EXCLUDES: PRIOR MONTH NET TOTALS OF 868 CASES; 2,200 RECIPIENTS; \$140,513.
 GRANT DIVERSION TOTALS OF: 2,075 CASES; \$1,594,108.
 ZERO PAY TOTALS OF 4,547 CASES; 13,487 RECIPIENTS.
 RRP: 135 CASES; 192 RECIPIENTS; \$27,726.

1/INCLUDES: TANF CHILD ONLY: 9,264 CASES; 17,532 RECIPIENTS; \$1,810,553.

	CURRENT MO. CASES	CURRENT MO. RECIP.	CURRENT MO. DOLLARS	PRIOR MO. CASES	PRIOR MO. RECIP.	PRIOR MO. DOLLARS
PASQUAYQUI	275	788	\$85,798	16	51	\$3,883
WM APACHE	0	0	\$0	0	0	\$0
SALT RIVER	86	267	\$24,889	5	18	\$1,509
SAN CARLOS	473	1,019	\$115,047	30	74	\$4,258
HOPI	127	344	\$27,656	12	30	\$1,318
TOTAL	961	2,418	\$253,390	63	173	\$10,968

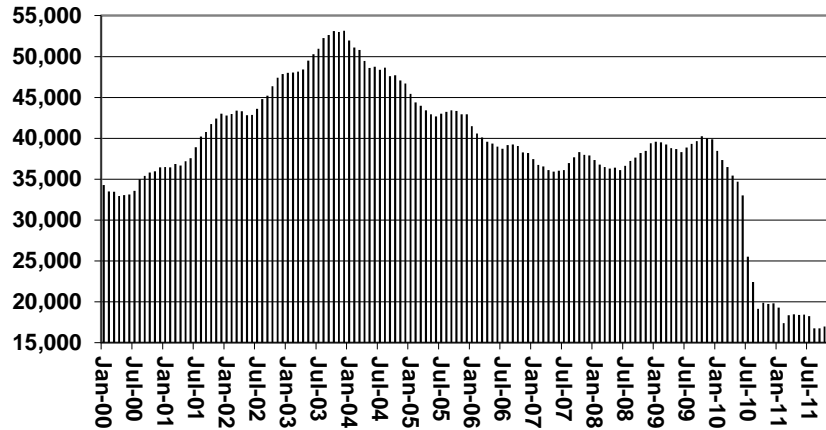
TANF SUMMARY

TABLES 1, 1A, 1B, & 1C

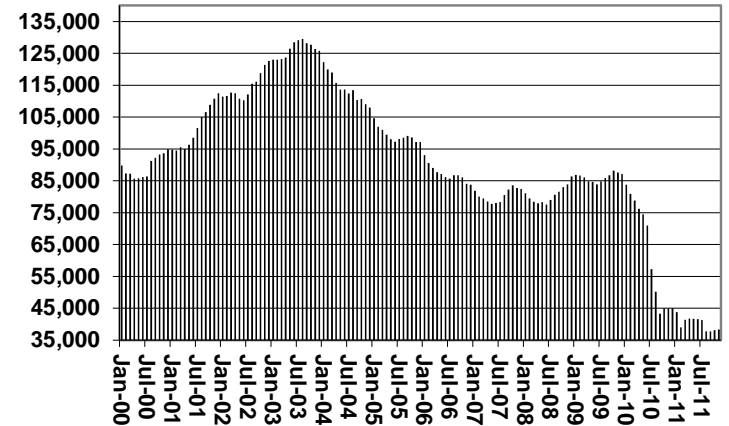
COMPARISON OF CASES, RECIPIENTS, PAYMENTS & AVERAGE PAYMENTS

FOR 2000, 2001, 2002, 2003, 2004, 2005, 2006, 2007, 2008, 2009, 2010, & 2011

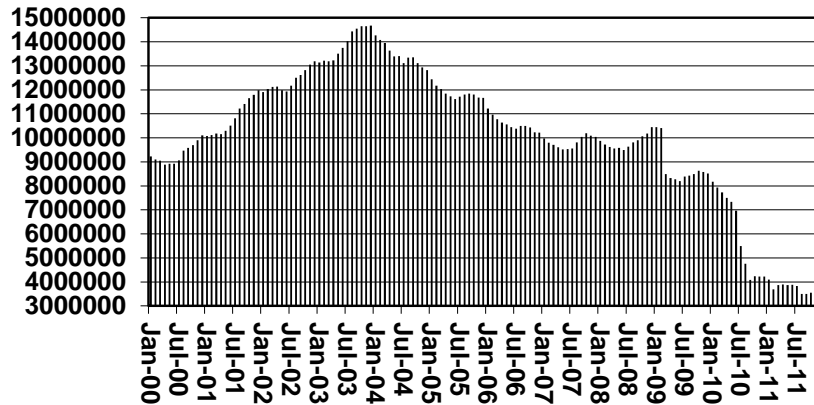
Cases



Recipients



Payments



Average Payments Per Recipient

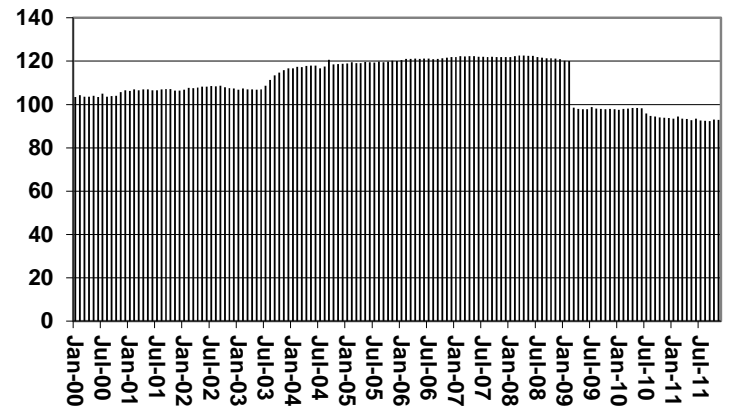


TABLE 1
CASH ASSISTANCE: ARIZONA 1/

	NOVEMBER 2011							CHANGE FROM			OCTOBER 2011			NOVEMBER 2010		
	FAMILIES	(RECIP.)	ADULTS	CHILDREN	TOTAL	AVERAGE	AVERAGE	FAMILIES	PERSONS	TOTAL	FAMILIES	PERSONS	TOTAL			
	(CASES)				PAYMENTS	PAYMENT/ CASE	PAYMENT/ RECIP.	(CASES)	(RECIP.)	PAYMENTS	(CASES)	(RECIP.)	PAYMENTS			
ARIZONA	16,038	35,514	9,118	26,396	3,398,036	211.87	95.68	127	334	19,090	(2,600)	(6,125)	(617,965)			
REGION																
MARICOPA	9,603	21,649	5,373	16,276	2,031,449	211.54	93.84	47	135	3,124	(1,893)	(4,623)	(449,750)			
NORTHERN	983	2,195	620	1,575	205,966	209.53	93.83	20	55	4,456	(54)	(63)	(12,249)			
APACHE	32	79	22	57	7,168	224.00	90.73	4	13	1,115	(6)	6	(101)			
COCONINO	64	151	44	107	13,491	210.80	89.34	5	3	530	(18)	(49)	(4,571)			
MOHAVE	578	1,228	334	894	120,092	207.77	97.79	7	32	3,473	(17)	6	(3,697)			
NAVAJO	309	737	220	517	65,215	211.05	88.49	4	7	(662)	(13)	(26)	(3,880)			
CENTRAL	1,916	4,104	1,111	2,993	403,011	210.34	98.20	12	54	2,305	(278)	(729)	(71,947)			
GILA	446	963	338	625	105,927	237.50	110.00	16	46	3,067	(72)	(191)	(24,227)			
LA PAZ	55	123	37	86	11,119	202.16	90.40	(1)	11	304	(24)	(59)	(5,725)			
PINAL	694	1,445	337	1,108	138,583	199.69	95.91	(3)	(3)	(1,066)	(182)	(479)	(41,995)			
YAVAPAI	289	591	131	460	57,635	199.43	97.52	28	57	4,848	5	32	1,164			
YUMA	432	982	268	714	89,747	207.75	91.39	8	(3)	1,035	(61)	(142)	(17,715)			
SOUTHERN	3,536	7,566	2,014	5,552	757,610	214.26	100.13	12	36	3,322	(319)	(600)	(67,468)			
COCHISE	339	677	159	518	70,734	208.65	104.48	12	24	2,139	(3)	19	(397)			
GRAHAM	217	454	153	301	50,710	233.69	111.70	(9)	(22)	(2,141)	8	51	1,261			
GREENLEE	18	41	13	28	3,534	196.33	86.20	3	9	237	2	5	412			
PIMA	2,846	6,125	1,636	4,489	607,301	213.39	99.15	(8)	(6)	189	(331)	(721)	(71,775)			
SANTA CRUZ	116	269	53	216	25,331	218.37	94.17	14	31	2,898	5	46	3,031			

1/EXCLUDES: PRIOR MONTH NET TOTALS OF: 390 CASES; 1,018 RECIPIENTS; \$102,193.
GRANT DIVERSION TOTALS OF: 2,075 CASES; \$1,594,108.
ZERO PAY TOTALS OF 4,542 CASES; 13,466 RECIPIENTS.

CASES WITH GRANT UNDER \$100 (SEE TABLE 1B).

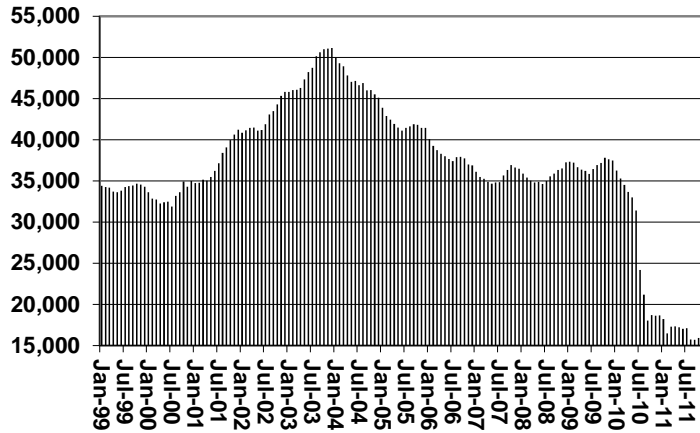
	CURRENT	CURRENT	CURRENT MO.	PRIOR MO.	PRIOR	PRIOR
	MO. CASES	MO. RECIP.	DOLLARS	CASES	MO. RECIP.	MO. DOLLARS
PASQUAY/AQUI	265	750	\$81,971	13	40	\$3,548
WM APACHE	0	0	\$0	0	0	\$0
SALT RIVER	86	267	\$24,889	5	18	\$1,509
SAN CARLOS	473	1,019	\$115,047	30	74	\$4,258
HOPI	127	344	\$27,656	12	30	\$1,318
TOTAL	951	2,380	\$249,563	60	162	\$10,633

CHART 1

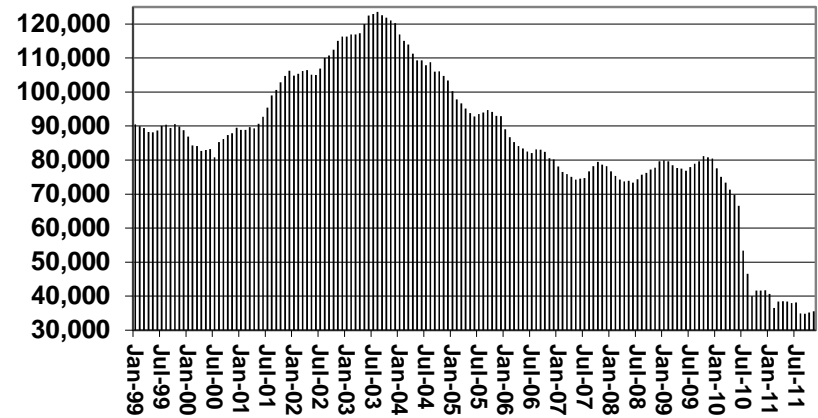
CASH ASSISTANCE PROGRAM

COMPARISON OF CASES, RECIPIENTS, PAYMENTS & AVERAGE PAYMENTS FOR 1999, 2000, 2001, 2002, 2003, 2004, 2005, 2006, 2007, 2008, 2009, 2010, & 2011

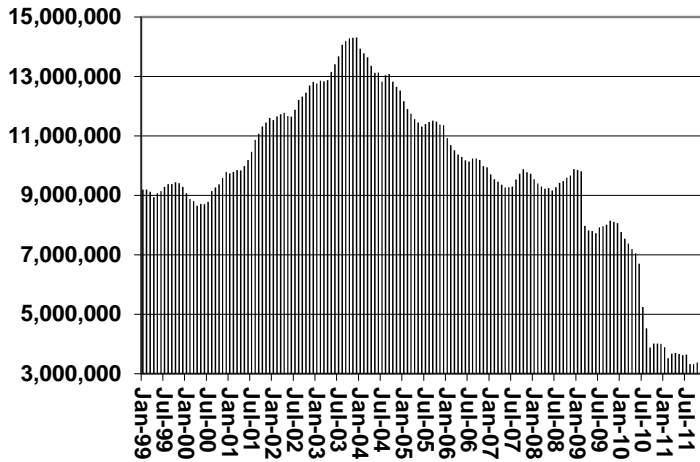
Cases



Recipients



Payments



Average Payment Per Recipient

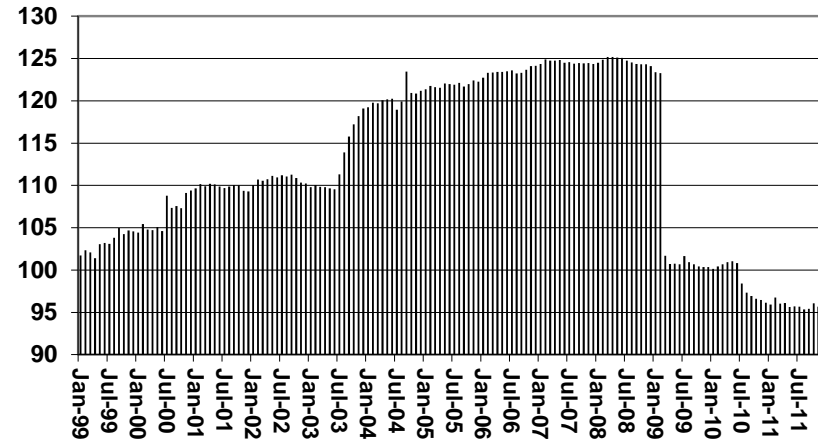


TABLE 1A
CA-UP

CASH ASSISTANCE UNEMPLOYED PARENT PROGRAM: ARIZONA 1/

	NOVEMBER 2011							CHANGE FROM			OCTOBER 2011			NOVEMBER 2010		
	FAMILIES (CASES)	PERSONS (RECIP.)	ADULTS	CHILDREN	TOTAL PAYMENTS	AVERAGE PAYMENT/ CASE	AVERAGE PAYMENT/ RECIP.	FAMILIES (CASES)	PERSONS (RECIP.)	TOTAL PAYMENTS	FAMILIES (CASES)	PERSONS (RECIP.)	TOTAL PAYMENTS			
ARIZONA	400	1,597	724	873	118,556	296.39	74.24	(16)	(40)	(4,411)	(207)	(627)	(51,883)			
REGION																
MARICOPA	217	900	398	502	66,800	307.83	74.22	(13)	(31)	(3,331)	(214)	(661)	(56,194)			
NORTHERN	33	120	62	58	9,014	273.15	75.12	1	(3)	(269)	22	80	6,258			
APACHE	7	25	12	13	1,976	282.29	79.04	1	2	139	7	25	1,976			
COCONINO	3	11	5	6	797	265.67	72.45	1	5	392	3	11	797			
MOHAVE	14	51	28	23	4,082	291.57	80.04	(2)	(13)	(887)	6	22	1,923			
NAVAJO	9	33	17	16	2,159	239.89	65.42	1	3	87	6	22	1,562			
CENTRAL	45	168	81	87	12,259	272.42	72.97	(4)	(17)	(1,291)	(13)	(48)	(3,292)			
GILA	2	9	4	5	603	301.50	33.50	1	5	392	1	5	268			
LA PAZ	1	4	2	2	335	335.00	83.75	(1)	(6)	(369)	(4)	(16)	(1,216)			
PINAL	21	83	38	45	5,512	262.48	66.41	(4)	(16)	(1,314)	(10)	(37)	(2,344)			
YAVAPAI	4	14	8	6	1,029	257.25	73.50	(1)	(2)	(315)	2	11	645			
YUMA	17	58	29	29	4,780	281.18	82.41	4	8	906	5	22	2,074			
SOUTHERN	105	409	183	226	30,483	290.31	74.53	(3)	5	(111)	(9)	(31)	(1,374)			
COCHISE	5	18	8	10	1,519	303.80	84.39	1	2	179	2	6	608			
GRAHAM	2	8	4	4	670	0.00	0.00	1	4	335	2	8	670			
GREENLEE	1	8	2	6	563	563.00	70.38	1	8	563	1	8	563			
PIMA	92	354	162	192	26,477	287.79	74.79	(10)	(27)	(2,326)	(19)	(74)	(4,469)			
SANTA CRUZ	5	21	7	14	1,254	250.80	26.81	4	18	1,138	5	21	1,254			

1/EXCLUDES: PRIOR MONTH NET TOTALS OF: 49 CASES; 197 RECIPIENTS; \$13,342.
GRANT DIVERSION TOTALS OF: 0 CASES; \$0.
ZERO PAY TOTALS OF 5 CASES; 21 RECIPIENTS.

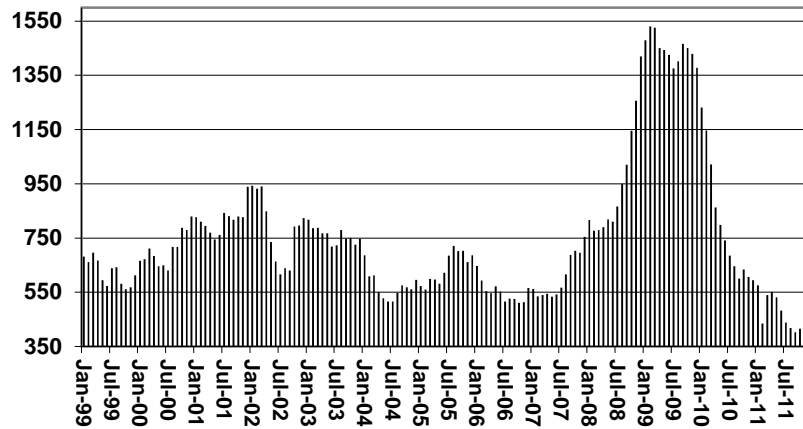
CASES WITH GRANT UNDER \$100 (SEE TABLE 1C).

	CURRENT MO. CASES	CURRENT MO. RECIP.	CURRENT MO. DOLLARS	PRIOR MO. CASES	PRIOR MO. RECIP.	PRIOR MO. DOLLARS
PASQUAYUQUI	10	38	\$3,827	3	11	\$335
WM APACHE	0	0	\$0	0	0	\$0
SALT RIVER	0	0	\$0	0	0	\$0
SAN CARLOS	0	0	\$0	0	0	\$0
HOPI	0	0	\$0	0	0	\$0
TOTAL	10	38	\$3,827	3	11	\$335

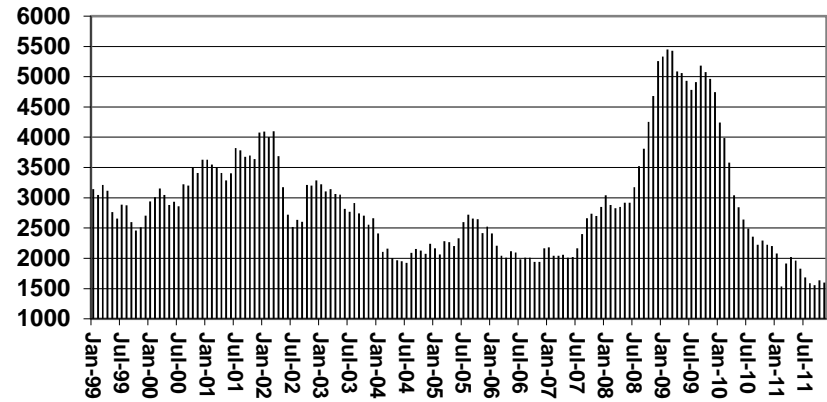
CHART 1A

CASH ASSISTANCE UNEMPLOYED PARENT PROGRAM COMPARISON OF CASES, RECIPIENTS, PAYMENTS & AVERAGE PAYMENTS FOR 1999, 2000, 2001, 2002, 2003, 2004, 2005, 2006, 2007, 2008, 2009, 2010, & 2011

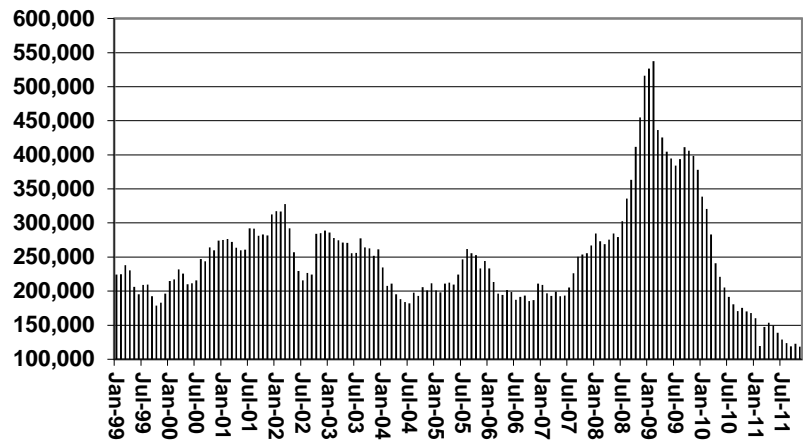
Cases



Recipients



Payments



Average Payment Per Recipient

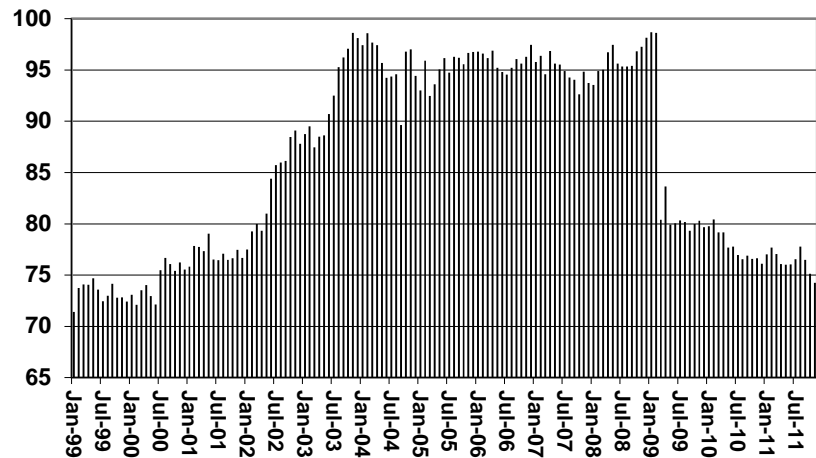


TABLE 1B 1/

CASH ASSISTANCE: ARIZONA
CASES WITH GRANT UNDER \$100

	NOVEMBER 2011							CHANGE FROM			NOVEMBER 2010		
					AVERAGE	AVERAGE	OCTOBER 2011			NOVEMBER 2010			
	FAMILIES (CASES)	PERSONS (RECIP.)	ADULTS	CHILDREN	TOTAL PAYMENTS	PAYMENT/ CASE	PAYMENT/ RECIP.	FAMILIES (CASES)	PERSONS (RECIP.)	TOTAL PAYMENTS	FAMILIES (CASES)	PERSONS (RECIP.)	TOTAL PAYMENTS
ARIZONA	584	1,185	287	898	42,199	72.26	35.61	(45)	(132)	(6,045)	115	190	7,300
REGION													
MARICOPA	356	735	168	567	26,247	73.73	35.71	(16)	(51)	(2,210)	65	91	4,829
NORTHERN	38	78	22	56	2,791	73.45	35.78	(2)	(9)	(367)	12	29	1,334
APACHE	3	4	1	3	218	72.67	54.50	3	4	151	2	3	136
COCONINO	4	7	2	5	334	83.50	47.71	1	2	66	1	1	135
MOHAVE	20	44	12	32	1,407	70.35	31.98	(2)	(7)	(379)	4	15	700
NAVAJO	11	23	7	16	832	75.64	36.17	(4)	(8)	(205)	5	10	363
CENTRAL	56	109	29	80	3,970	70.89	36.42	(18)	(44)	(1,370)	12	26	606
GILA	3	6	3	3	226	75.33	37.67	(2)	(3)	(198)	0	0	(67)
LA PAZ	5	9	2	7	292	58.40	32.44	1	0	(22)	(1)	0	(130)
PINAL	21	41	8	33	1,257	59.86	30.66	(8)	(22)	(719)	0	2	(390)
YAVAPAI	9	19	5	14	660	73.33	34.74	(9)	(20)	(559)	3	8	212
YUMA	18	34	11	23	1,535	85.28	45.15	0	1	128	10	16	981
SOUTHERN	134	263	68	195	9,191	68.59	34.95	(9)	(28)	(2,098)	26	44	531
COCHISE	16	30	5	25	973	60.81	32.43	5	11	185	10	17	356
GRAHAM	4	7	3	4	281	70.25	40.14	0	1	(56)	2	3	119
GREENLEE	0	0	0	0	0	0.00	0.00	0	0	0	(2)	(4)	(166)
PIMA	107	212	57	155	7,441	69.54	35.10	(16)	(43)	(2,289)	16	33	335
SANTA CRUZ	7	14	3	11	496	70.86	35.43	2	3	62	0	(5)	(113)

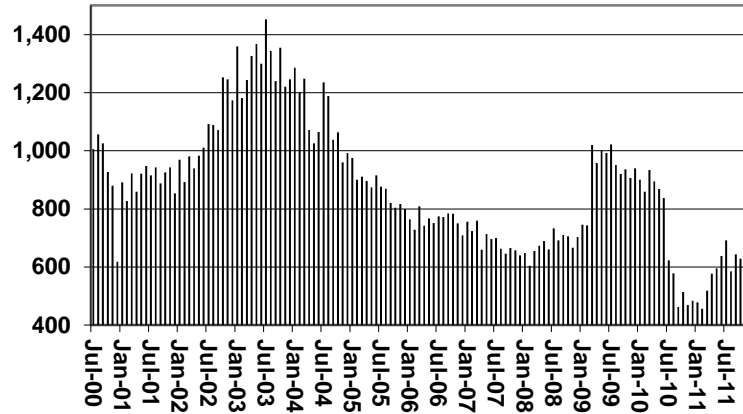
EXCLUDES: PRIOR MONTH NET TOTALS OF 407 CASES; 898 RECIPIENTS; \$23,736.

CHART 1B

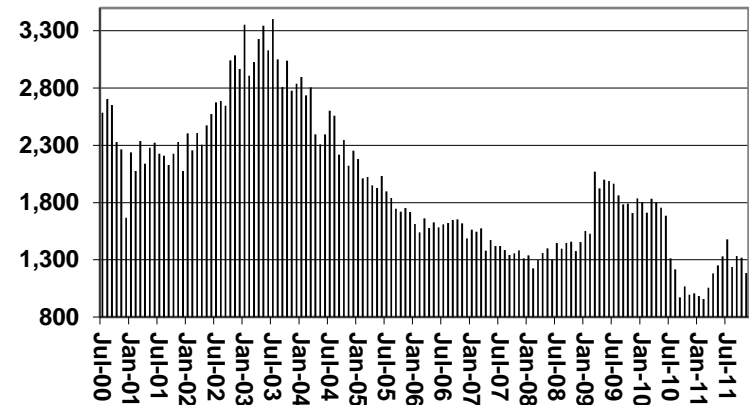
CASH ASSISTANCE PROGRAM CASES WITH GRANT UNDER \$100

FOR 1999, 2000, 2001, 2002, 2003, 2004, 2005, 2006, 2007, 2008, 2009, 2010, & 2011

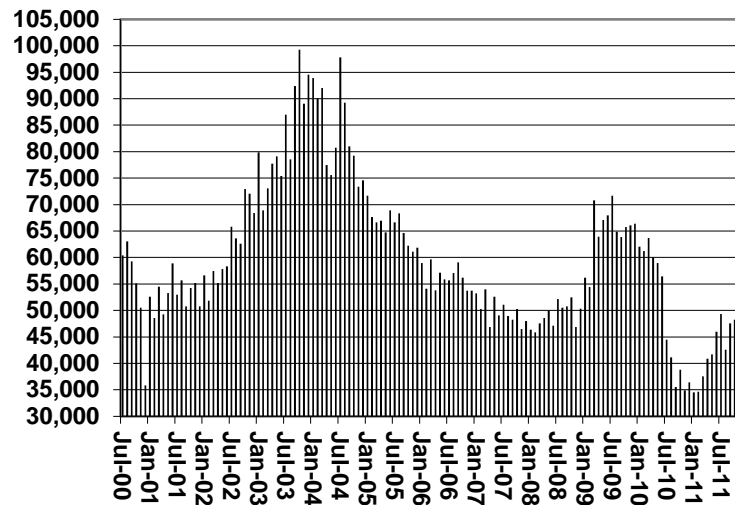
Cases



Recipients



Payments



Average Payment Per Recipient

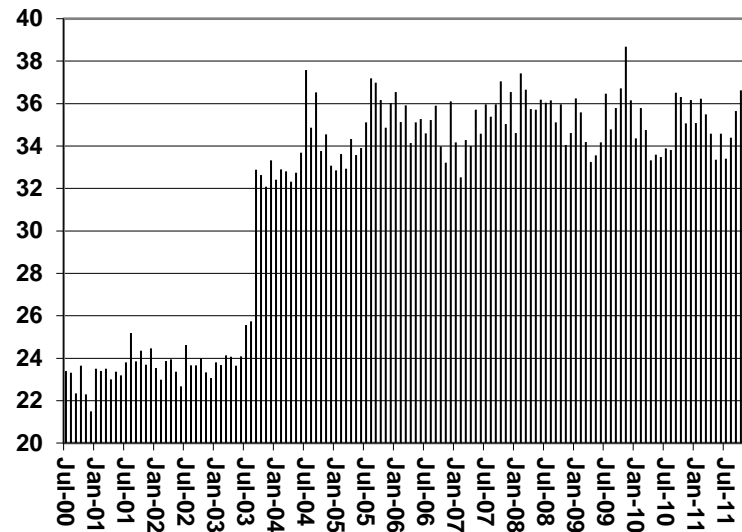


TABLE 1C 1/

CASH ASSISTANCE UNEMPLOYED PARENT PROGRAM: ARIZONA
 CASES WITH GRANT UNDER \$100

	NOVEMBER 2011							CHANGE FROM			NOVEMBER 2010		
	FAMILIES (CASES)		PERSONS (RECIP.)		TOTAL PAYMENTS	AVERAGE PAYMENT/ CASE	AVERAGE PAYMENT/ RECIP.	FAMILIES (CASES)	PERSONS (RECIP.)	TOTAL PAYMENTS	FAMILIES (CASES)	PERSONS (RECIP.)	TOTAL PAYMENTS
			ADULTS	CHILDREN									
ARIZONA	5	17	8	9	368	73.60	21.65	(6)	(19)	(293)	(28)	(74)	(1,299)
REGION													
MARICOPA	4	12	6	6	276	69.00	23.00	(3)	(9)	(118)	(24)	(65)	(1,190)
NORTHERN	1	5	2	3	92	92.00	18.40	(1)	(3)	(33)	1	5	92
APACHE	0	0	0	0	0	0.00	0.00	0	0	0	0	0	0
COCONINO	0	0	0	0	0	0.00	0.00	0	0	0	0	0	0
MOHAVE	0	0	0	0	0	0.00	0.00	(1)	(3)	(63)	0	0	0
NAVAJO	1	5	2	3	92	92.00	18.40	0	0	30	1	5	92
CENTRAL	0	0	0	0	0	0.00	0.00	(1)	(2)	(50)	(3)	(9)	(99)
GILA	0	0	0	0	0	0.00	0.00	0	0	0	0	0	0
LA PAZ	0	0	0	0	0	0.00	0.00	0	0	0	0	0	0
PINAL	0	0	0	0	0	0.00	0.00	(1)	(2)	(50)	(2)	(6)	(46)
YAVAPAI	0	0	0	0	0	0.00	0.00	0	0	0	0	0	0
YUMA	0	0	0	0	0	0.00	0.00	0	0	0	(1)	(3)	(53)
SOUTHERN	0	0	0	0	0	0.00	0.00	(1)	(5)	(92)	(2)	(5)	(102)
COCHISE	0	0	0	0	0	0.00	0.00	0	0	0	0	0	0
GRAHAM	0	0	0	0	0	0.00	0.00	0	0	0	0	0	0
GREENLEE	0	0	0	0	0	0.00	0.00	0	0	0	0	0	0
PIMA	0	0	0	0	0	0.00	0.00	(1)	(5)	(92)	(2)	(5)	(102)
SANTA CRUZ	0	0	0	0	0	0.00	0.00	0	0	0	0	0	0

EXCLUDES: PRIOR MONTH NET TOTALS OF 22 CASES; 87 RECIPIENTS; \$1,242.

CHART 1C

CASH ASSISTANCE UNEMPLOYED PARENT PROGRAM

CASES WITH GRANT UNDER \$100

FOR 1999, 2000, 2001, 2002, 2003, 2004, 2005, 2006, 2007, 2008, 2009, 2010, & 2011

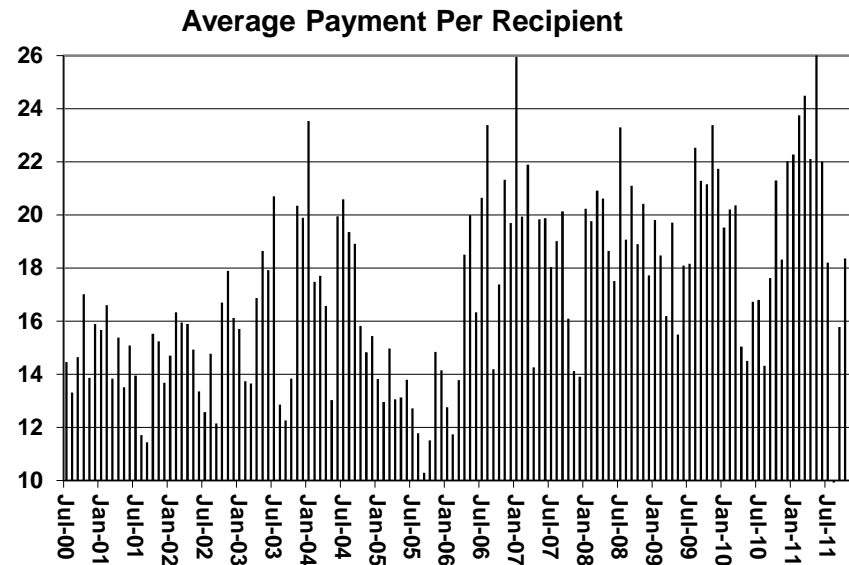
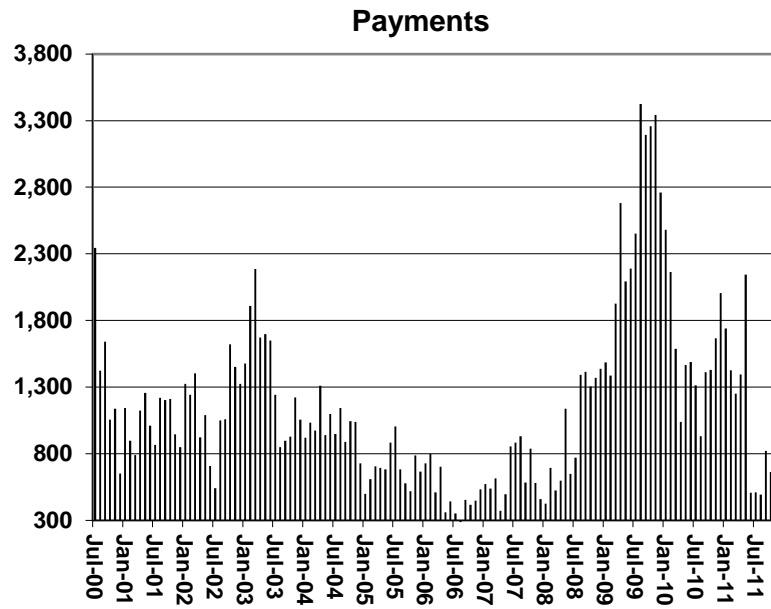
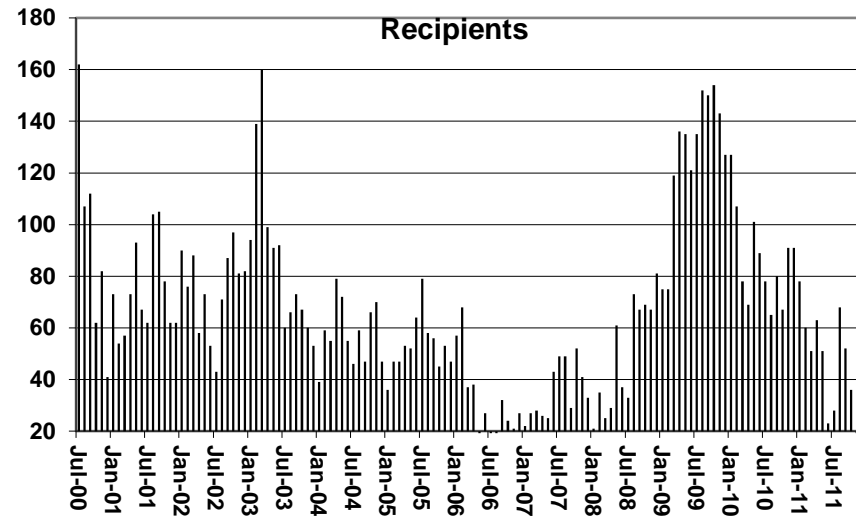
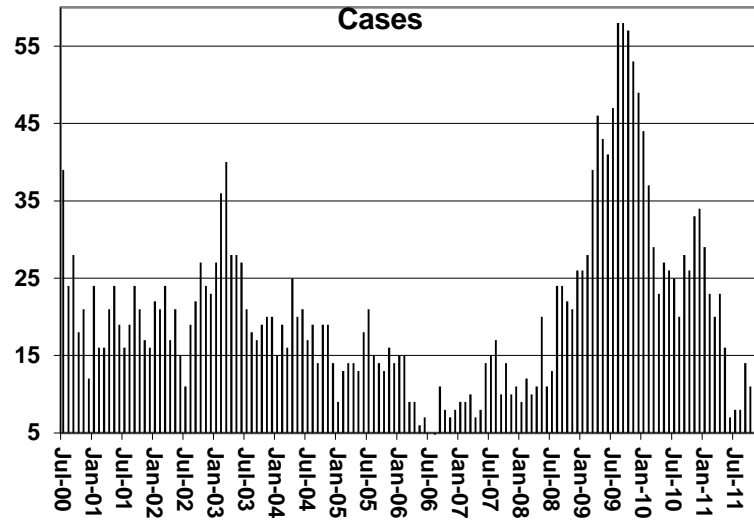


TABLE 4
TUBERCULOSIS CONTROL: ARIZONA 1/

	CHANGE FROM											
	NOVEMBER 2011					OCTOBER 2011			NOVEMBER 2010			
	NUMBER OF CASES	PERSONS (RECIP.)	TOTAL PAYMENTS	AVERAGE PAYMENT/ CASE	AVERAGE PAYMENT/ RECIP.	NUMBER OF CASES	PERSONS (RECIP.)	TOTAL PAYMENTS	NUMBER OF CASES	PERSONS (RECIP.)	TOTAL PAYMENTS	
ARIZONA	8	8	1,124	140.50	140.50	1	1	108	7	7	951	
REGION												
MARICOPA	8	8	1,124	140.50	140.50	1	1	108	7	7	951	
NORTHERN	0	0	0	0.00	0.00	0	0	0	0	0	0	
APACHE	0	0	0	0.00	0.00	0	0	0	0	0	0	
COCONINO	0	0	0	0.00	0.00	0	0	0	0	0	0	
MOHAVE	0	0	0	0.00	0.00	0	0	0	0	0	0	
NAVAJO	0	0	0	0.00	0.00	0	0	0	0	0	0	
CENTRAL	0	0	0	0.00	0.00	0	0	0	0	0	0	
GILA	0	0	0	0.00	0.00	0	0	0	0	0	0	
LA PAZ	0	0	0	0.00	0.00	0	0	0	0	0	0	
PINAL	0	0	0	0.00	0.00	0	0	0	0	0	0	
YAVAPAI	0	0	0	0.00	0.00	0	0	0	0	0	0	
YUMA	0	0	0	0.00	0.00	0	0	0	0	0	0	
SOUTHERN	0	0	0	0.00	0.00	0	0	0	0	0	0	
COCHISE	0	0	0	0.00	0.00	0	0	0	0	0	0	
GRAHAM	0	0	0	0.00	0.00	0	0	0	0	0	0	
GREENLEE	0	0	0	0.00	0.00	0	0	0	0	0	0	
PIMA	0	0	0	0.00	0.00	0	0	0	0	0	0	
SANTA CRUZ	0	0	0	0.00	0.00	0	0	0	0	0	0	

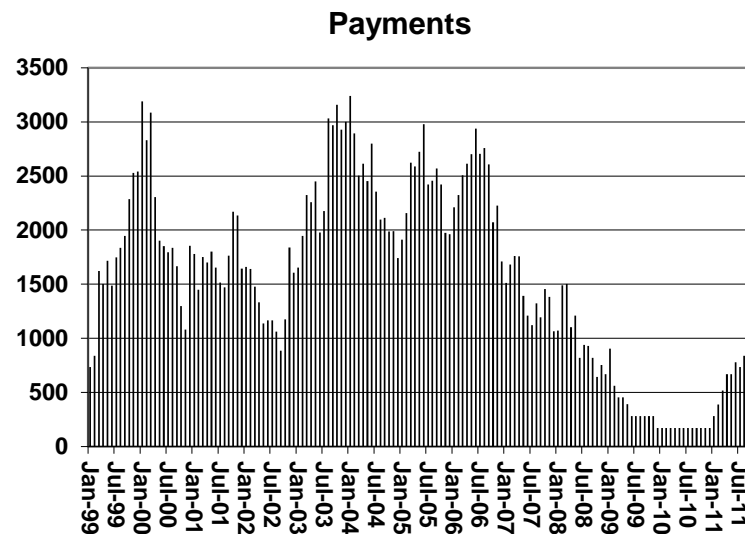
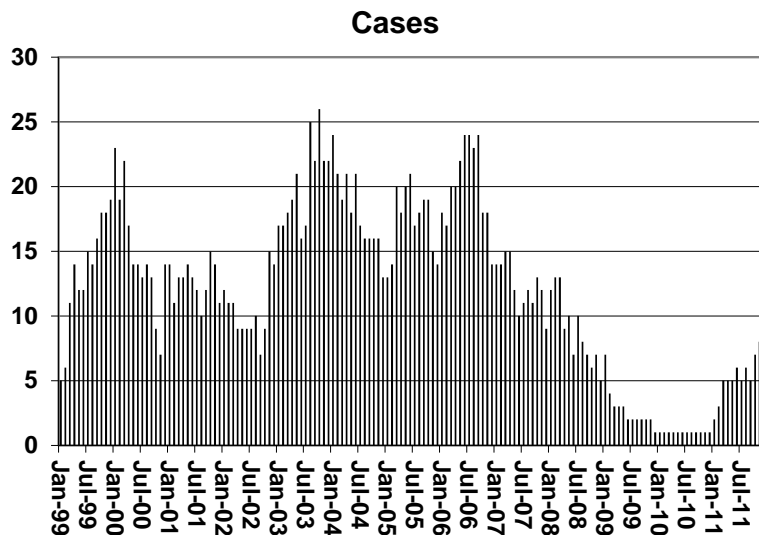
1/EXCLUDES: PRIOR MONTH NET TOTALS OF : 2 CASES; 2 RECIPIENTS; \$192.

CHART 4

TUBERCULOSIS CONTROL PROGRAM

COMPARISON OF CASES, PAYMENTS & AVERAGE PAYMENTS

FOR 1999, 2000, 2001, 2002, 2003, 2004, 2005, 2006, 2007, 2008, 2009, 2010, & 2011



Average Payment Per Case

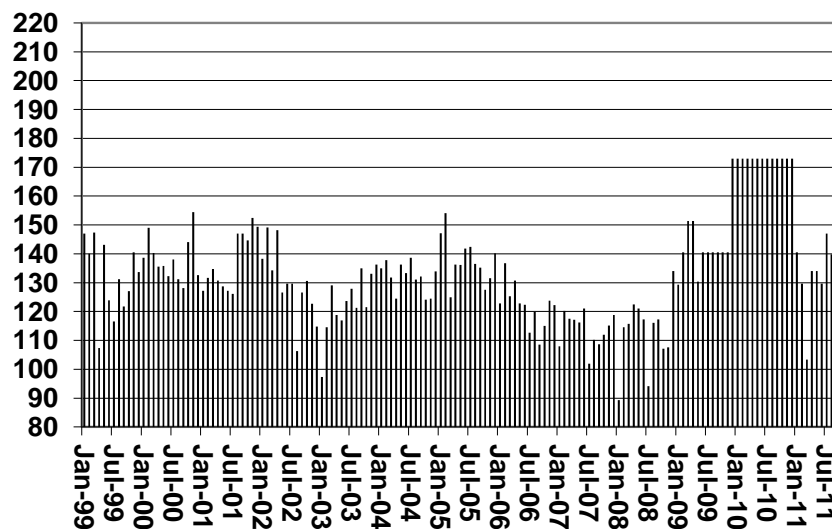


TABLE 6

SUPPLEMENTAL NUTRITION ASSISTANCE PROGRAM: ARIZONA 1/

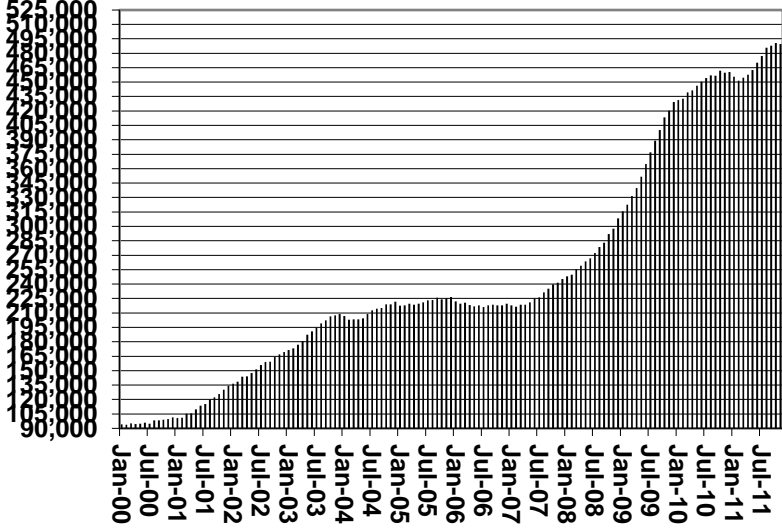
	CHANGE FROM												
	NOVEMBER 2011							OCTOBER 2011			NOVEMBER 2010		
	HOUSEHOLDS	PERSONS	ADULTS	CHILDREN	TOTAL PAYMENTS ISSUANCE	AVERAGE PAYMT./ HOUSEHOLD	AVERAGE PAYMT./ PERSON	HOUSEHOLDS	PERSONS	TOTAL PAYMENTS ISSUANCE	HOUSEHOLDS	PERSONS	TOTAL PAYMENTS ISSUANCE
ARIZONA	489,396	1,136,595	583,260	553,335	144,048,129	294.34	126.74	(1,089)	(1,625)	(465,527)	29,796	86,414	10,184,879
REGION													
MARICOPA	263,039	616,230	295,524	320,706	79,028,905	300.45	128.25	(430)	(351)	(179,670)	15,440	48,494	6,382,658
NORTHERN	56,478	136,891	77,090	59,801	16,951,906	300.15	123.84	156	191	42,808	3,874	9,594	980,748
APACHE	10,722	29,166	15,931	13,235	3,574,111	333.34	122.54	38	41	(3,865)	849	1,803	190,973
COCONINO	10,164	25,042	13,443	11,599	3,084,956	303.52	123.19	42	96	15,010	645	1,699	197,296
MOHAVE	21,481	45,991	27,565	18,426	5,775,365	268.86	125.58	18	(8)	17,949	1,238	3,320	339,619
NAVAJO	14,111	36,692	20,151	16,541	4,517,474	320.14	123.12	58	62	13,714	1,142	2,772	252,860
CENTRAL	65,408	156,297	84,504	71,793	19,162,785	292.97	122.60	(226)	(504)	(108,590)	5,479	15,624	1,537,462
GILA	6,283	13,774	7,979	5,795	1,785,957	284.25	129.66	61	97	19,332	315	840	85,695
LA PAZ	2,093	4,345	2,518	1,827	557,257	266.25	128.25	27	55	10,503	123	327	39,110
PINAL	23,691	59,433	30,575	28,858	7,460,451	314.91	125.53	(108)	8	(38,108)	2,326	7,150	772,759
YAVAPAI	15,945	32,402	19,422	12,980	3,985,633	249.96	123.01	(18)	(61)	(22,309)	1,436	3,170	357,333
YUMA	17,396	46,343	24,010	22,333	5,373,487	308.89	115.95	(188)	(603)	(78,008)	1,279	4,137	282,565
SOUTHERN	104,471	227,177	126,142	101,035	28,904,533	276.68	127.23	(589)	(961)	(220,075)	5,003	12,702	1,284,011
COCHISE	11,048	24,057	13,748	10,309	2,920,481	264.34	121.40	(38)	43	(9,258)	659	1,661	114,413
GRAHAM	3,539	8,118	4,529	3,589	1,008,177	284.88	124.19	(54)	(92)	(27,881)	102	221	(13,983)
GREENLEE	534	1,165	661	504	150,388	281.63	129.09	8	29	440	51	128	16,926
PIMA	84,545	181,004	100,614	80,390	23,299,550	275.59	128.72	(523)	(1,010)	(191,115)	3,844	9,774	1,076,901
SANTA CRUZ	4,805	12,833	6,590	6,243	1,525,937	317.57	118.91	18	69	7,739	347	918	89,754

1/EXCLUDES: PRIOR MONTH NET TOTALS OF : 6,584 CASES; 16,773 RECIPIENTS; \$1,054,698.
 AGED CANCELATIONS: 12,171 CASES; 14,670 RECIPIENTS; \$711,009.
 SNAP CONVERSIONS: 0 CASES; 0 RECIPIENTS; \$0.
 SNAP CHILD ONLY: 62,788 CASES; 148,592 RECIPIENTS; \$22,544,827.
 SNAP ZERO PAY: 5,090 CASES; 19,177 RECIPIENTS.

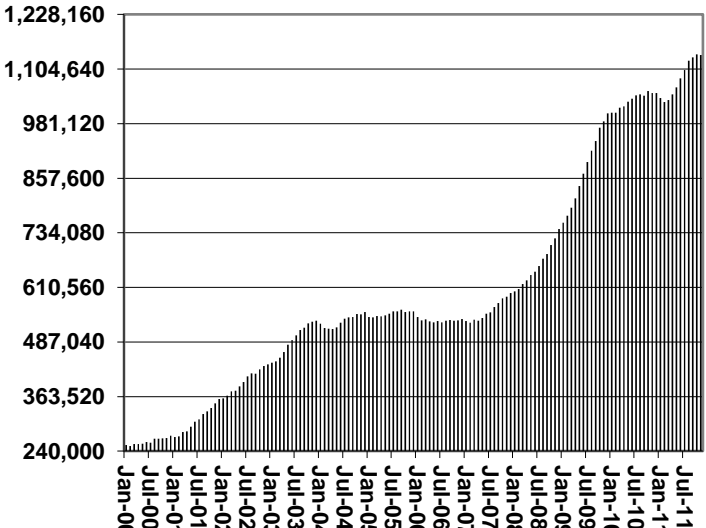
CHART 6

SUPPLEMENTAL NUTRITION ASSISTANCE PROGRAM (SNAP) COMPARISON OF HOUSEHOLDS, RECIPIENTS, PAYMENTS & AVERAGE PAYMENTS FOR 1999, 2000, 2001, 2002, 2003, 2004, 2005, 2006, 2007, 2008, 2009, 2010, & 2011

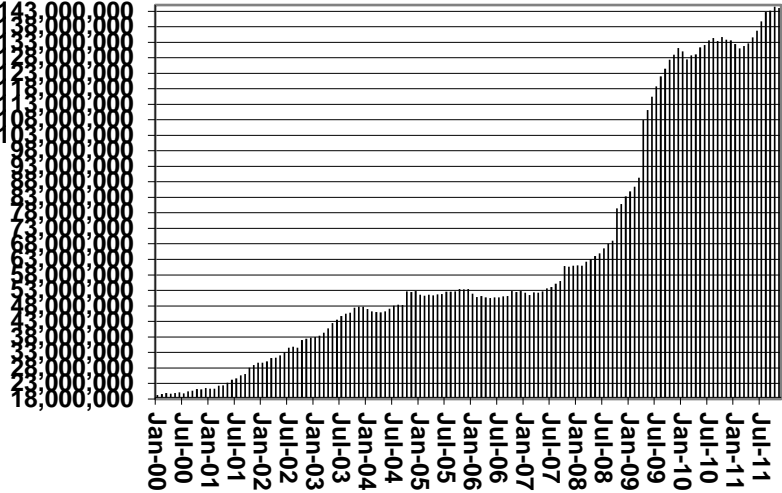
Households



Recipients



Payments



Average Payment Per Household

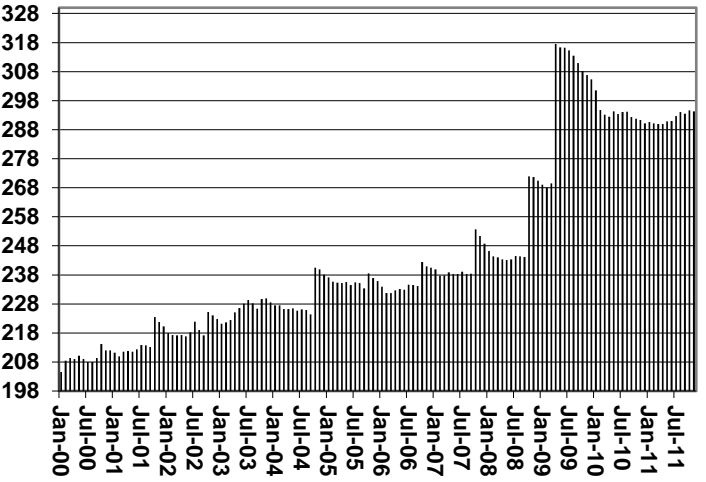


TABLE 7A
MEDICAL ASSISTANCE PROGRAM
RECIPIENTS
NOVEMBER 2011

	SOBRA WOMAN 133% FPL	SOBRA CHILD	ADULT W/O CHILD 100% FPL	FOSTER CARE	1931 36% FPL	FEDERAL EMERGENCY SERVICES	INFANTS	ADULT W/O CHILD 40% FPL	MEDICAL W/SPEND DOWN	SOBRA WOMAN 100% FPL	SOBRA CHILD 100% FPL	TRANSITIONAL MEDICAL T1 - T4	1931 100% FPL	YATI	OTHER	TOTAL CASES
ARIZONA	11,235	58,352	45,556	13,826	372,444	58,205	45,673	131,504	0	4,168	241,546	48,673	123,853	344	29,443	1,184,822
REGION																
MARICOPA	6,388	33,563	22,543	7,665	208,846	46,494	27,269	66,731	0	2,304	143,694	25,031	64,497	181	15,337	670,543
NORTHERN	1,213	5,987	5,359	679	47,125	1,055	4,576	20,027	0	485	23,779	5,644	14,777	17	3,022	133,745
APACHE	193	1,164	750	40	12,057	65	865	4,775	0	82	4,124	1,081	2,621	0	425	28,242
COCONINO	271	1,148	1,028	135	8,836	427	1,068	3,399	0	101	4,958	1,238	2,977	12	425	26,023
MOHAVE	445	1,883	2,285	358	12,536	349	1,413	6,165	0	177	8,796	1,853	5,342	4	1,613	43,219
NAVAJO	304	1,792	1,296	146	13,696	214	1,230	5,688	0	125	5,901	1,472	3,837	1	559	36,261
CENTRAL	1,692	7,934	6,728	1,600	48,783	3,833	5,937	17,102	0	607	30,269	7,887	18,616	44	4,555	155,587
GILA	112	502	542	113	4,897	102	468	2,068	0	44	2,014	524	1,329	2	353	13,070
LA PAZ	41	187	204	27	1,422	116	147	613	0	10	633	157	342	0	165	4,064
PINAL	534	3,420	1,953	613	20,923	1,222	2,240	6,750	0	219	11,109	2,449	6,319	16	1,415	59,182
YAVAPAI	396	1,594	1,971	536	8,323	1,086	1,142	3,835	0	110	6,238	1,937	3,879	24	1,260	32,331
YUMA	609	2,231	2,058	311	13,218	1,307	1,940	3,836	0	224	10,275	2,820	6,747	2	1,362	46,940
SOUTHERN	1,942	10,868	10,926	3,882	67,690	6,823	7,891	27,644	0	772	43,804	10,111	25,963	102	6,529	224,947
COCHISE	201	1,060	1,370	245	7,194	420	763	2,493	0	84	4,442	1,055	2,783	7	882	22,999
GRAHAM	97	374	364	82	2,761	27	350	1,140	0	38	1,470	382	886	1	172	8,144
GREENLEE	19	37	47	9	495	6	58	190	0	3	226	31	104	1	38	1,264
PIMA	1,521	8,818	8,464	3,511	53,618	5,952	6,268	22,800	0	598	34,508	8,026	20,167	93	4,950	179,294
SANTA CRUZ	104	579	681	35	3,622	418	452	1,021	0	49	3,158	617	2,023	0	487	13,246

TABLE 7B
MEDICAL ASSISTANCE PROGRAM
RECIPIENTS

CHANGE FROM

OCTOBER 2011

	SOBRA WOMAN 133% FPL	SOBRA CHILD	ADULT W/O CHILD 100% FPL	FOSTER CARE	1931 36% FPL	FEDERAL EMERGENCY SERVICES	INFANTS	ADULT W/O CHILD 40% FPL	MEDICAL W/SPEND DOWN	SOBRA WOMAN 100% FPL	SOBRA CHILD 100% FPL	TRANSITIONAL MEDICAL T1 - T4	1931 100% FPL	YATI	OTHER	TOTAL CASES
ARIZONA	(262)	(6,785)	(4,328)	219	3,167	670	(369)	(10,644)	(12)	(140)	(468)	2,138	(1,670)	4	(212)	(18,692)
REGION																
MARICOPA	(115)	(3,945)	(2,217)	175	1,795	680	(138)	(5,769)	(11)	(87)	(32)	888	(695)	6	(133)	(9,598)
NORTHERN	(33)	(737)	(531)	(2)	645	33	(39)	(1,389)	(1)	10	(80)	74	(177)	1	(46)	(2,272)
APACHE	(3)	(143)	(70)	1	86	5	(17)	(257)	0	4	(58)	53	(48)	0	3	(444)
COCONINO	(5)	(126)	(126)	(4)	106	19	12	(305)	0	(5)	(19)	58	(53)	(1)	(8)	(457)
MOHAVE	(5)	(234)	(204)	(1)	143	0	(9)	(444)	(1)	(1)	(25)	(33)	(88)	2	(30)	(930)
NAVAJO	(20)	(234)	(131)	2	310	9	(25)	(383)	0	12	22	(4)	12	0	(11)	(441)
CENTRAL	(27)	(894)	(613)	17	529	(40)	(92)	(1,328)	0	(22)	(358)	655	(515)	0	20	(2,668)
GILA	(3)	(36)	(50)	7	66	4	0	(119)	0	(5)	(9)	3	(17)	0	14	(145)
LA PAZ	1	(22)	(13)	2	67	2	(4)	(24)	0	(1)	0	(7)	(16)	0	(2)	(17)
PINAL	(27)	(452)	(206)	(2)	230	(3)	(55)	(575)	0	1	(91)	201	(94)	0	14	(1,059)
YAVAPAI	(10)	(136)	(127)	11	73	13	(22)	(298)	0	(8)	(16)	100	(80)	1	13	(486)
YUMA	12	(248)	(217)	(1)	93	(56)	(11)	(312)	0	(9)	(242)	358	(308)	(1)	(19)	(961)
SOUTHERN	(87)	(1,209)	(967)	29	198	(3)	(100)	(2,158)	0	(41)	2	521	(283)	(3)	(53)	(4,154)
COCHISE	(12)	(115)	(123)	1	67	2	(20)	(184)	0	(9)	(13)	107	(14)	0	(24)	(337)
GRAHAM	1	(50)	(20)	3	(64)	(2)	(2)	(91)	0	5	39	(6)	21	0	7	(159)
GREENLEE	4	(8)	(4)	0	10	2	2	(13)	0	(1)	(11)	6	6	0	2	(5)
PIMA	(76)	(980)	(775)	26	212	(10)	(86)	(1,848)	0	(28)	(38)	340	(259)	(3)	(33)	(3,558)
SANTA CRUZ	(4)	(56)	(45)	(1)	(27)	5	6	(22)	0	(8)	25	74	(37)	0	(5)	(95)

TABLE 7C
MEDICAL ASSISTANCE PROGRAM
RECIPIENTS

CHANGE FROM
NOVEMBER 2010

	SOBRA WOMAN 133% FPL	SOBRA CHILD	ADULT W/O CHILD 100% FPL	FOSTER CARE	1931 36% FPL	FEDERAL EMERGENCY SERVICES	INFANTS	ADULT W/O CHILD 40% FPL	MEDICAL W/SPEND DOWN	SOBRA WOMAN 100% FPL	SOBRA CHILD 100% FPL	TRANSITIONAL MEDICAL T1 - T4	3E 1931 100% FPL	YATI	OTHER	TOTAL CASES
ARIZONA	414	(12,552)	(18,482)	1,614	32,997	6,980	(1,354)	(41,535)	(7,174)	352	12,527	3,388	(2,679)	8	1,348	(24,148)
REGION																
MARICOPA	581	(6,795)	(8,890)	1,260	21,290	6,838	(758)	(21,377)	(3,897)	371	10,034	1,869	(1,311)	(4)	795	6
NORTHERN	54	(1,744)	(2,245)	38	3,040	(21)	(273)	(5,605)	(953)	(76)	500	(243)	(157)	(1)	54	(7,632)
APACHE	9	(354)	(298)	8	671	(20)	(95)	(967)	(119)	(26)	(157)	(122)	(117)	0	29	(1,558)
COCONINO	(6)	(344)	(652)	4	494	91	(4)	(1,298)	(148)	(5)	132	(30)	(82)	1	(1)	(1,848)
MOHAVE	74	(486)	(792)	27	780	(77)	(72)	(2,083)	(481)	(24)	453	(123)	98	(1)	59	(2,648)
NAVAJO	(23)	(560)	(503)	(1)	1,095	(15)	(102)	(1,257)	(205)	(21)	72	32	(56)	(1)	(33)	(1,578)
CENTRAL	(47)	(1,652)	(3,065)	86	4,733	(174)	(116)	(5,329)	(1,048)	15	815	1,157	(360)	7	191	(4,787)
GILA	(7)	(216)	(236)	14	355	(24)	(54)	(548)	(109)	0	53	108	(58)	2	(10)	(730)
LA PAZ	(6)	(84)	(70)	9	174	(13)	(4)	(243)	(26)	(4)	(84)	(58)	(75)	0	2	(482)
PINAL	(72)	(687)	(959)	(14)	2,670	57	5	(1,702)	(342)	34	732	368	191	1	138	420
YAVAPAI	7	(226)	(803)	65	1,012	(65)	(31)	(1,435)	(284)	(11)	(33)	284	(293)	7	15	(1,791)
YUMA	31	(439)	(997)	12	522	(129)	(32)	(1,401)	(287)	(4)	147	455	(125)	(3)	46	(2,204)
SOUTHERN	(174)	(2,361)	(4,282)	230	3,934	337	(207)	(9,224)	(1,276)	42	1,178	605	(851)	6	308	(11,735)
COCHISE	(41)	(175)	(374)	5	177	(27)	(60)	(826)	(165)	1	98	38	(39)	4	7	(1,377)
GRAHAM	(17)	(114)	(150)	12	(17)	(1)	8	(314)	(67)	10	53	40	(16)	(1)	15	(559)
GREENLEE	(4)	(16)	(20)	2	58	4	11	(21)	(5)	0	9	(36)	(10)	(1)	4	(25)
PIMA	(106)	(1,927)	(3,458)	208	3,606	423	(179)	(7,884)	(977)	36	1,011	485	(716)	5	272	(9,201)
SANTA CRUZ	(6)	(129)	(280)	3	110	(62)	13	(179)	(62)	(5)	7	78	(70)	(1)	10	(573)

CHART 7

MEDICAL ASSISTANCE PROGRAM

COMPARISON OF RECIPIENTS

FOR 1999, 2000, 2001, 2002, 2003, 2004, 2005, 2006, 2007, 2008, 2009, 2010, & 2011

Total Recipients

