



DEPARTMENT OF ECONOMIC SECURITY

Your Partner For A Stronger Arizona

State of Arizona

Department of Economic Security

Family Assistance Administration

Statistical Bulletin

May, 2010

Phone: (602) 542-3678

<https://www.azdes.gov/appreports.aspx>

**** STATISTICAL BULLETIN ****
ARIZONA DEPARTMENT OF ECONOMIC SECURITY
FAMILY ASSISTANCE ADMINISTRATION
BOX 6123, PHOENIX, ARIZONA 85005
PHONE (602) 542-3678

MAY 2010

THIS ISSUE OF THE STATISTICAL BULLETIN COMPARES MAY 2010 DATA FOR EACH OF THE INDICATED PROGRAMS WITH THE INFORMATION FOR APRIL 2010 AND MAY 2009. STATEWIDE SUMMARIES OF ACTIVITY WITHIN EACH OF THE SPECIFIC PROGRAMS FOR THIS REPORT PERIOD ARE DISCUSSED BELOW. THE TABLES COMPARE CURRENT AND PRIOR MONTH DATA. DISTRICT AND COUNTY COMPARISONS ARE PROVIDED WITHIN THIS BULLETIN

TANF SUMMARY

COMPARING TO APRIL 2010, MAY 2010 CASES DECREASED BY 765 (2.16%) TO 34,686. RECIPIENTS DECREASED BY 1,762 (2.31%) TO 74,496. PAYMENTS DECREASED BY \$169,506 (2.26%) TO \$7,332,681. AVERAGE PAYMENT PER CASE DECREASED BY \$0.22 (0.10%) TO \$211.40. PAYMENT PER RECIPIENT INCREASED BY \$0.05 (0.05%) TO \$98.43.

COMPARING TO MAY 2009, MAY 2010 CASES DECREASED BY 4,009 (10.36%). RECIPIENTS DECREASED BY 10,172 (12.01%). TOTAL PAYMENTS DECREASED BY \$946,638 (11.43%). THE AVERAGE PAYMENT PER CASE DECREASED BY \$2.56 (1.20%). THE AVERAGE PAYMENT PER RECIPIENT INCREASED BY \$0.64 (0.65%).

CASH ASSISTANCE (CA)

COMPARING TO APRIL 2010, MAY 2010 CASES DECREASED BY 677 (2.01%) TO 32,993. RECIPIENTS DECREASED BY 1,551 (2.17%) TO 69,793. PAYMENTS DECREASED BY \$149,052 (2.07%) TO \$7,051,196. AVERAGE PAYMENT PER CASE DECREASED BY \$0.13 (0.06%) TO \$213.72. PAYMENT PER RECIPIENT INCREASED BY \$0.11 (0.11%) TO \$101.03.

COMPARING TO MAY 2009, MAY 2010 CASES DECREASED BY 3,214 (8.88%). RECIPIENTS DECREASED BY 7,681 (9.91%). TOTAL PAYMENTS DECREASED BY \$754,484 (9.67%). THE AVERAGE PAYMENT PER CASE DECREASED BY \$1.86 (0.86%). THE AVERAGE PAYMENT PER RECIPIENT INCREASED BY \$0.28 (0.28%).

CASH ASSISTANCE UNEMPLOYED PARENT PROGRAM (CA-UP)

COMPARING TO APRIL 2010, MAY 2010 CASES DECREASED BY 65 (7.53%) TO 798. RECIPIENTS DECREASED BY 197 (6.47%) TO 2,846. PAYMENTS DECREASED BY \$19,818 (8.23%) TO \$221,038. AVERAGE PAYMENT PER CASE DECREASED BY \$2.10 (0.75%) TO \$276.99. PAYMENT PER RECIPIENT DECREASED BY \$1.48 (1.87%) TO \$77.67.

COMPARING TO MAY 2009, MAY 2010 CASES DECREASED BY 646 (44.74%). RECIPIENTS DECREASED BY 2,214 (43.75%). TOTAL PAYMENTS DECREASED BY \$183,431 (45.35%). THE AVERAGE PAYMENT PER CASE DECREASED BY \$3.12 (1.11%). THE AVERAGE PAYMENT PER RECIPIENT DECREASED BY \$2.26 (2.83%).

CASH ASSISTANCE WITH GRANT UNDER \$100 (CA-MOE)

COMPARING TO APRIL 2010, MAY 2010 CASES DECREASED BY 27 (3.02%) TO 868. RECIPIENTS DECREASED BY 46 (2.55%) TO 1,756. PAYMENTS DECREASED BY \$1,064 (1.77%) TO \$58,981. AVERAGE PAYMENT PER CASE INCREASED BY \$0.86 (1.28%) TO \$67.95. AVERAGE PAYMENT PER RECIPIENT INCREASED BY \$0.27 (0.81%) TO \$33.59.

COMPARING TO MAY 2009, MAY 2010 CASES DECREASED BY 133 (13.29%). RECIPIENTS DECREASED BY 243 (12.16%). TOTAL PAYMENTS DECREASED BY \$8,097 (12.07%). THE AVERAGE PAYMENT PER CASE INCREASED BY \$0.94 (1.40%). THE AVERAGE PAYMENT PER RECIPIENT INCREASED BY \$0.03 (0.09%).

CASH ASSISTANCE UNEMPLOYED PARENT PROGRAM WITH GRANT UNDER \$100 (CA-UP-MOE) NEW PROGRAM STARTING 7/01

COMPARING TO APRIL 2010, MAY 2010 CASES INCREASED BY 4 (17.39%) TO 27. RECIPIENTS INCREASED BY 32 (46.38%) TO 101. PAYMENTS INCREASED BY \$428 (41.23%) TO \$1,466. AVERAGE PAYMENT PER CASE INCREASED BY \$9.17 (20.32%) TO \$54.30. PAYMENT PER RECIPIENT DECREASED BY \$0.53 (3.52%) TO \$14.51.

COMPARING TO MAY 2009, MAY 2010 CASES DECREASED BY 16 (37.21%). RECIPIENTS DECREASED BY 34 (3.28%). TOTAL PAYMENTS DECREASED BY \$626 (29.92%). THE AVERAGE PAYMENT PER CASE INCREASED BY \$5.65 (11.61%). THE AVERAGE PAYMENT PER RECIPIENT DECREASED BY \$0.99 (6.39%).

TUBERCULOSIS CONTROL PROGRAM (TC)

COMPARING TO APRIL 2010, MAY 2010 CASES INCREASED BY 0 (0.00%) TO 1. RECIPIENTS INCREASED BY 0 (0.00%) TO 1. PAYMENTS INCREASED BY \$0 (0.00%) TO \$173. AVERAGE PAYMENT PER CASE INCREASED BY \$38.40 (22.20%) TO \$211.40. AVERAGE PAYMENT PER RECIPIENT INCREASED BY \$0.00 (0.00%) TO \$173.00.

COMPARING TO MAY 2009, MAY 2010 CASES DECREASED BY 2 (66.67%). RECIPIENTS DECREASED BY 2 (66.67%). TOTAL PAYMENTS DECREASED BY \$218 (55.75%). THE AVERAGE PAYMENT PER CASE INCREASED BY \$81.07 (62.20%). THE AVERAGE PAYMENT PER RECIPIENT INCREASED BY \$42.67 (32.74%).

SUPPLEMENTAL NUTRITION ASSISTANCE PROGRAM (SNAP)

COMPARING TO APRIL 2010, MAY 2010 SUPPLEMENTAL NUTRITION ASSISTANCE HOUSEHOLDS INCREASED BY 4,833 (1.09%) TO 446,370. PERSONS RECEIVING SUPPLEMENTAL NUTRITION ASSISTANCE INCREASED BY 10,427 (1.02%) TO 1,031,075. TOTAL COUPON ISSUANCE INCREASED BY \$2,237,208 (1.73%) TO \$131,368,332. THE AVERAGE HOUSEHOLD ALLOTMENT INCREASED BY \$1.84 (0.63%) TO \$294.30. THE AVERAGE ALLOTMENT PER PERSON INCREASED BY \$0.89 (0.70%) TO \$127.41.

COMPARING TO MAY 2009, MAY 2010 SUPPLEMENTAL NUTRITION ASSISTANCE HOUSEHOLDS INCREASED BY 94,862 (26.99%). PERSONS RECEIVING SUPPLEMENTAL NUTRITION ASSISTANCE INCREASED BY 191,197 (22.76%). TOTAL COUPON ISSUANCE INCREASED BY \$20,180,055 (18.15%). THE AVERAGE ALLOTMENT PER HOUSEHOLD DECREASED BY \$22.02 (6.96%). THE AVERAGE ALLOTMENT PER PERSON DECREASED BY \$4.98 (3.76%).

MEDICAL ASSISTANCE PROGRAM (MA) NEW TABLE INCLUDES PROP. 204 CATEGORIES

COMPARING TO APRIL 2010, MAY 2010 TOTAL RECIPIENTS TOTAL RECIPIENTS INCREASED BY 1,608 (0.14%). SOBRA WOMEN AT 140% FPL INCREASED BY 64 (0.63%). SOBRA CHILDREN DECREASED BY 638 (0.98%). ADULTS W/O CHILD AT 100% DECREASED BY 1,388 (2.28%). FOSTER CARE INCREASED BY 23 (0.19%). 1931 AT 36% FPL INCREASED BY 7,929 (2.42%). EMERGENCY SERVICES DECREASED BY 2,628 (3.95%). INFANTS DECREASED BY 265 (0.54%). ADULT W/O CHILD AT 140% INCREASED BY 2,301 (1.44%). MEDICAL W/SPEND DOWN INCREASED BY 163 (2.37%). SOBRA WOMAN AT 100% DECREASED BY 140 (3.52%). SOBRA CHILD AT 100% DECREASED BY 2,061 (0.90%). TRANSITIONAL MEDICAL DECREASED BY 390 (0.85%). 1931 AT 100% DECREASED BY 1,523 (1.25%). YATI INCREASED BY 0 (0.00%). ALL OTHER CATEGORIES INCREASED BY 161 (0.60%).

COMPARING TO MAY 2009, MAY 2010 TOTAL RECIPIENTS TOTAL RECIPIENTS INCREASED BY 102,372 (9.43%). SOBRA WOMEN AT 140% FPL DECREASED BY 804 (7.27%). SOBRA CHILDREN INCREASED BY 1,008 (1.59%). ADULTS W/O CHILD AT 100% INCREASED BY 13,360 (29.00%). FOSTER CARE INCREASED BY 593 (5.22%). 1931 AT 36% FPL INCREASED BY 14,519 (4.53%). EMERGENCY SERVICES DECREASED BY 26,117 (29.03%). INFANTS INCREASED BY 1,213 (2.53%). ADULT W/O CHILD AT 140% INCREASED BY 41,284 (34.24%). MEDICAL W/SPEND DOWN INCREASED BY 918 (14.96%). SOBRA WOMAN AT 100% DECREASED BY 174 (4.34%). SOBRA CHILD AT 100% INCREASED BY 27,275 (13.61%). TRANSITIONAL MEDICAL INCREASED BY 8,126 (21.76%). 1931 AT 100% INCREASED BY 19,146 (18.97%). YATI INCREASED BY 63 (22.42%). ALL OTHER CATEGORIES INCREASED BY 1,962 (7.82%).

TANF SUMMARY

TABLES 1, 1A, 1B, & 1C: ARIZONA 1/

	MAY 2010							CHANGE FROM			MAY 2009		
	FAMILIES (CASES)	PERSONS (RECIP.)	ADULTS	CHILDREN	TOTAL PAYMENTS	AVERAGE	AVERAGE	FAMILIES (CASES)	PERSONS (RECIP.)	TOTAL PAYMENTS	FAMILIES (CASES)	PERSONS (RECIP.)	TOTAL PAYMENTS
						PAYMENT/ CASE	PAYMENT/ RECIP.						
ARIZONA	34,686	74,496	18,001	56,495	7,332,681	211.40	98.43	(765)	(1,762)	(169,506)	(4,009)	(10,172)	(946,638)
DISTRICT I													
MARICOPA	21,481	47,059	11,025	36,034	4,518,717	210.36	96.02	(354)	(823)	(77,497)	(1,622)	(4,326)	(394,757)
DISTRICT II													
PIMA	5,577	11,200	2,835	8,365	1,142,930	204.94	102.05	(137)	(249)	(29,261)	(953)	(2,286)	(225,084)
DISTRICT III													
APACHE	100	219	58	161	24,025	240.25	109.70	98	214	23,593	94	208	22,923
COCONINO	178	367	73	294	36,152	203.10	98.51	(16)	(47)	(3,598)	(54)	(117)	(9,656)
NAVAJO	1,386	3,610	1,133	2,477	377,148	272.11	104.47	(81)	(185)	(22,856)	(63)	(34)	(11,246)
YAVAPAI	578	1,061	196	865	109,606	189.63	103.30	(19)	(46)	(4,205)	(177)	(413)	(35,716)
DISTRICT IV													
LA PAZ	159	324	88	236	30,344	190.84	93.65	(6)	(17)	(1,803)	(19)	(55)	(5,004)
MOHAVE	1,048	2,070	541	1,529	210,598	200.95	101.74	(28)	(81)	(5,378)	(218)	(572)	(51,859)
YUMA	834	1,765	329	1,436	174,259	208.94	98.73	(16)	(50)	(4,831)	(140)	(321)	(29,293)
DISTRICT V													
GILA	658	1,379	483	896	156,323	237.57	113.36	(22)	(54)	(7,108)	(50)	(139)	(17,601)
PINAL	1,547	3,274	763	2,511	316,189	204.39	96.58	(104)	(253)	(20,594)	(411)	(1,144)	(98,932)
DISTRICT VI													
COCHISE	678	1,293	267	1,026	138,405	204.14	107.04	(53)	(117)	(11,935)	(206)	(484)	(46,929)
GRAHAM	241	449	134	315	53,258	220.99	118.61	(12)	(25)	(1,611)	(87)	(213)	(20,038)
GREENLEE	26	52	12	40	5,249	201.88	100.94	10	19	1,964	(22)	(49)	(4,897)
SANTA CRUZ	195	374	64	310	39,478	202.45	105.56	(25)	(48)	(4,386)	(81)	(227)	(18,549)

1/EXCLUDES: PRIOR MONTH NET TOTALS OF 1,219 CASES; 2,968 RECIPIENTS; \$216,076.
 GRANT DIVERSION TOTALS OF: 991 CASES;\$750,009.
 ZERO PAY TOTALS OF 2,264 CASES; 6,582 RECIPIENTS.
 TANF CHILD ONLY: 17,577 CASES; 29,159 RECIPIENTS; \$3,366,798.
 RRP: 505 CASES; 844 RECIPIENTS; \$107,344.

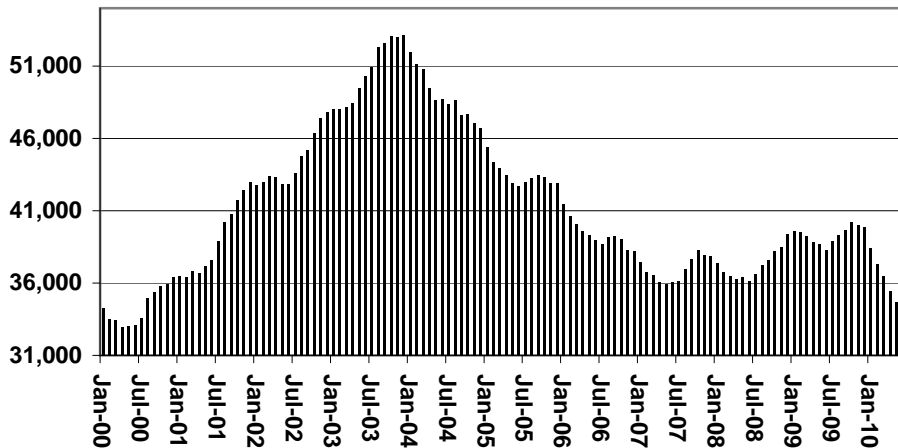
	CURRENT MO. CASES	CURRENT MO. RECIP.	CURRENT MO. DOLLARS	PRIOR MO. CASES	PRIOR MO. RECIP.	PRIOR MO. DOLLARS
PASQUAYAOUI	303	843	\$90,270	9	24	\$2,359
WM APACHE	820	2,386	\$256,038	11	29	\$2,219
SALT RIVER	77	242	\$21,127	1	1	\$68
SAN CARLOS	545	1,174	\$138,213	22	50	\$4,307
HOPI	128	364	\$28,840	10	30	\$1,774
TOTAL	1,873	5,009	\$534,488	53	134	\$10,727

TANF SUMMARY

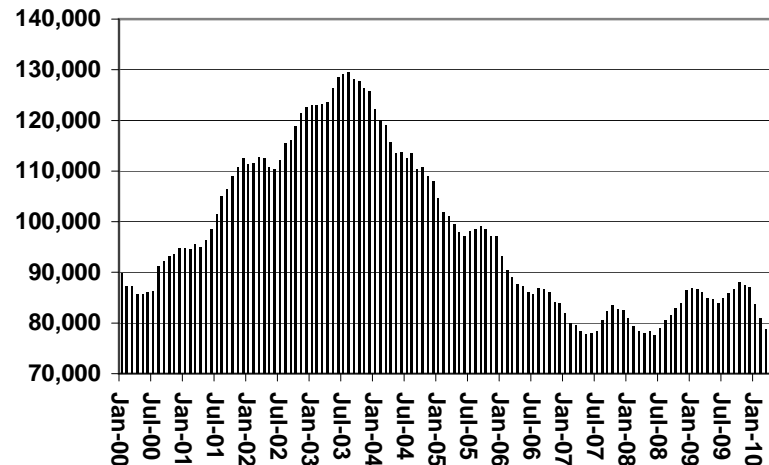
TABLES 1, 1A, 1B, & 1C

COMPARISON OF CASES, RECIPIENTS, PAYMENTS & AVERAGE PAYMENTS
FOR 2000, 2001, 2002, 2003, 2004, 2005, 2006, 2007, 2008, 2009, & 2010

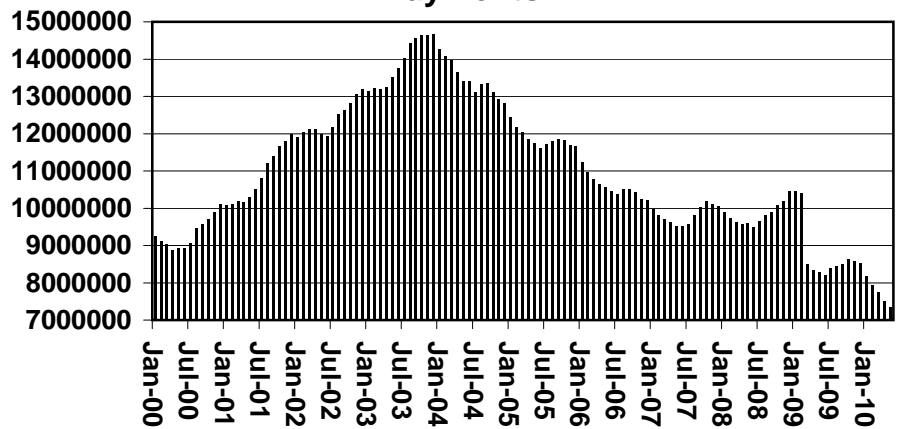
Cases



Recipients



Payments



Average Payments Per Recipient

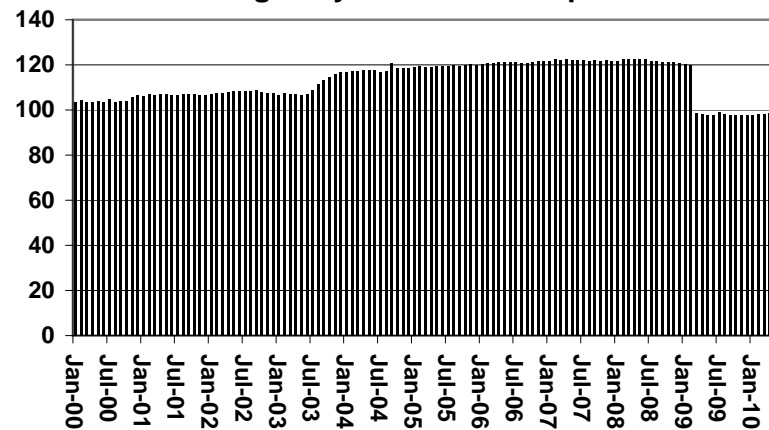


TABLE 1
CASH ASSISTANCE: ARIZONA 1/

	MAY 2010							CHANGE FROM			MAY 2009		
	FAMILIES (CASES)	(RECIP.)	ADULTS	CHILDREN	TOTAL PAYMENTS	AVERAGE PAYMENT/ CASE	AVERAGE PAYMENT/ RECIP.	APRIL 2010			FAMILIES (CASES)	PERSONS (RECIP.)	TOTAL PAYMENTS
								FAMILIES (CASES)	PERSONS (RECIP.)	TOTAL PAYMENTS			
ARIZONA	32,993	69,793	16,388	53,405	7,051,196	213.72	101.03	(677)	(1,551)	(149,052)	(3,214)	(7,681)	(754,484)
DISTRICT I													
MARICOPA	20,335	43,818	9,986	33,832	4,322,235	212.55	98.64	(279)	(635)	(60,584)	(1,202)	(3,146)	(303,419)
DISTRICT II													
PIMA	5,286	10,366	2,490	7,876	1,092,114	206.60	105.36	(137)	(282)	(29,725)	(845)	(1,895)	(190,550)
DISTRICT III													
APACHE	100	219	58	161	24,025	240.25	109.70	98	214	23,629	94	208	22,923
COCONINO	173	354	67	287	35,677	206.23	100.78	(16)	(49)	(3,603)	(46)	(91)	(7,785)
NAVAJO	1,365	3,559	1,117	2,442	374,761	274.55	105.30	(83)	(189)	(22,772)	(35)	66	(2,178)
YAVAPAI	552	1,006	182	824	107,198	194.20	106.56	(12)	(26)	(3,229)	(146)	(338)	(31,042)
DISTRICT IV													
LA PAZ	151	310	83	227	29,542	195.64	95.30	(2)	(10)	(1,449)	(18)	(44)	(4,591)
MOHAVE	1,004	1,952	494	1,458	204,635	203.82	104.83	(28)	(77)	(5,521)	(171)	(432)	(40,456)
YUMA	803	1,681	297	1,384	168,676	210.06	100.34	(17)	(43)	(4,317)	(126)	(277)	(26,152)
DISTRICT V													
GILA	643	1,347	473	874	154,329	240.01	114.57	(24)	(57)	(7,184)	(49)	(135)	(17,345)
PINAL	1,476	3,089	689	2,400	305,557	207.02	98.92	(97)	(218)	(18,144)	(326)	(784)	(75,023)
DISTRICT VI													
COCHISE	658	1,251	255	996	136,253	207.07	108.92	(48)	(110)	(11,329)	(169)	(371)	(38,399)
GRAHAM	234	433	129	304	52,386	223.87	120.98	(14)	(33)	(1,885)	(75)	(181)	(17,805)
GREENLEE	26	52	12	40	5,249	201.88	100.94	10	19	1,964	(21)	(47)	(4,850)
SANTA CRUZ	187	356	56	300	38,559	206.20	108.31	(28)	(55)	(4,903)	(79)	(214)	(17,812)
1/EXCLUDES: PRIOR MONTH NET TOTALS OF: 558 CASES; 1,402 RECIPIENTS; \$152,036.							CURRENT			PRIOR			
GRANT DIVERSION TOTALS OF: 991 CASES; \$750,009							CURRENT	MO.	CURRENT MO.	PRIOR MO.	MO.	PRIOR	
ZERO PAY TOTALS OF 2,231 CASES; 6,436 RECIPIENTS.							MO. CASES	RECIP.	DOLLARS	CASES	RECIP.	DOLLARS	
							PASQUAY/AQUI	291	795	\$85,635	8	21	\$2,185
							WM APACHE	819	2,383	\$255,760	11	29	\$2,219
							SALT RIVER	77	242	\$21,127	1	1	\$68
							SAN CARLOS	545	1,174	\$138,213	22	50	\$4,307
							HOPI	128	364	\$28,840	10	30	\$1,774
CASES WITH GRANT UNDER \$100 (SEE TABLE 1B).							TOTAL	1,860	4,958	\$529,575	52	131	\$10,553

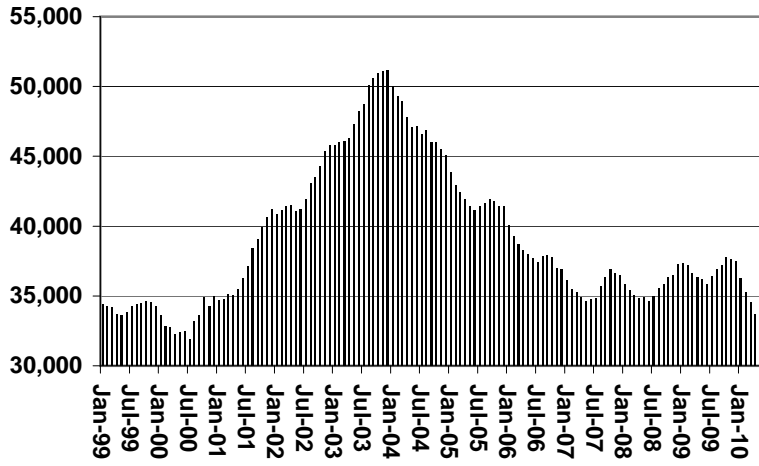
CHART 1

CASH ASSISTANCE PROGRAM

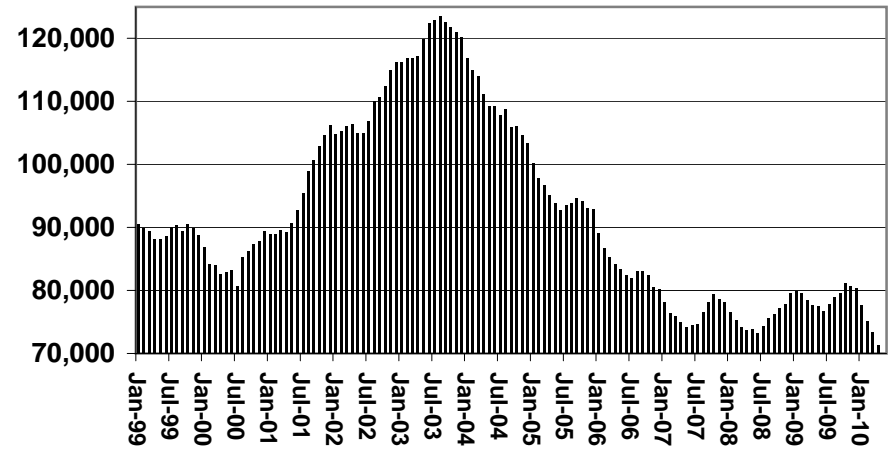
COMPARISON OF CASES, RECIPIENTS, PAYMENTS & AVERAGE PAYMENTS

FOR 1999, 2000, 2001, 2002, 2003, 2004, 2005, 2006, 2007, 2008, 2009, & 2010

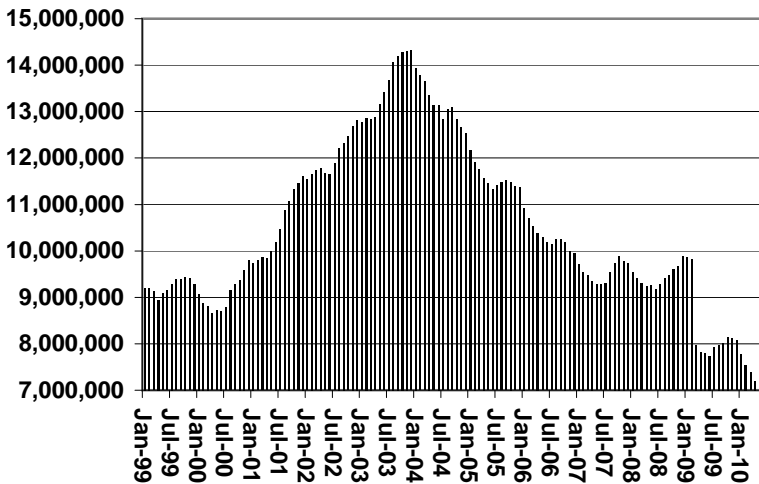
Cases



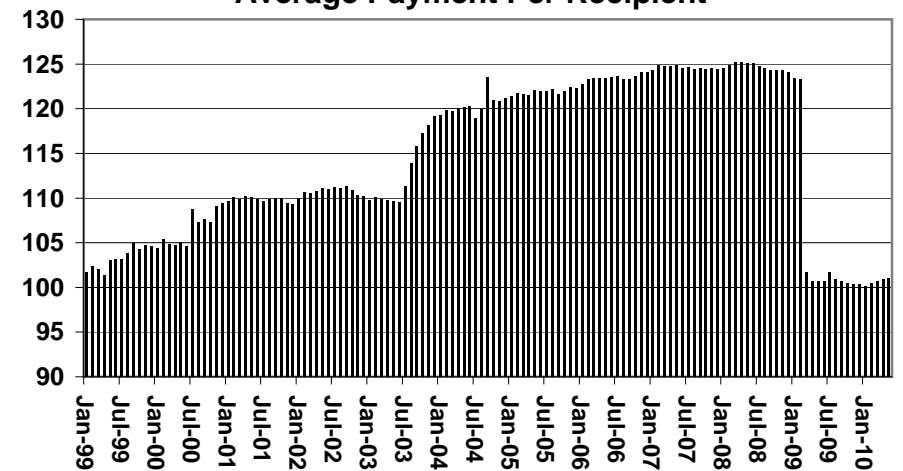
Recipients



Payments



Average Payment Per Recipient



**TABLE 1A
CA-UP**

CASH ASSISTANCE UNEMPLOYED PARENT PROGRAM: ARIZONA 1/

	MAY 2010							CHANGE FROM			MAY 2009		
	FAMILIES (CASES)	PERSONS (RECIP.)	ADULTS	CHILDREN	TOTAL PAYMENTS	AVERAGE PAYMENT/ CASE	AVERAGE PAYMENT/ RECIP.	FAMILIES (CASES)	PERSONS (RECIP.)	TOTAL PAYMENTS	FAMILIES (CASES)	PERSONS (RECIP.)	TOTAL PAYMENTS
ARIZONA	798	2,846	1,140	1,706	221,038	276.99	77.67	(65)	(197)	(19,818)	(646)	(2,214)	(183,431)
DISTRICT I													
MARICOPA	568	2,007	745	1,262	157,122	276.62	78.29	(51)	(166)	(16,064)	(323)	(994)	(87,437)
DISTRICT II													
PIMA	143	528	254	274	40,876	285.85	77.42	(2)	18	29	(120)	(432)	(34,769)
DISTRICT III													
APACHE	0	0	0	0	0	0.00	0.00	0	0	0	0	0	0
COCONINO	1	2	2	0	139	139.00	69.50	0	0	(81)	(5)	(22)	(1,867)
NAVAJO	5	19	9	10	1,148	229.60	60.42	(1)	(4)	(551)	(28)	(101)	(9,075)
YAVAPAI	6	18	6	12	1,398	233.00	77.67	(2)	(5)	(509)	(13)	(44)	(3,322)
DISTRICT IV													
LA PAZ	2	6	3	3	350	175.00	58.33	0	0	(103)	(2)	(10)	(567)
MOHAVE	15	56	27	29	4,290	286.00	76.61	0	(1)	329	(30)	(111)	(9,602)
YUMA	14	53	23	30	4,079	291.36	76.96	(3)	(11)	(953)	(10)	(29)	(2,939)
DISTRICT V													
GILA	5	18	8	10	1,458	291.60	81.00	0	0	(37)	(2)	(8)	(196)
PINAL	31	113	53	60	8,192	264.26	72.50	(8)	(35)	(2,367)	(78)	(339)	(23,279)
DISTRICT VI													
COCHISE	4	12	4	8	1,008	252.00	84.00	0	0	0	(26)	(93)	(7,717)
GRAHAM	2	7	3	4	489	244.50	69.86	1	4	211	(7)	(22)	(1,922)
GREENLEE	0	0	0	0	0	0.00	0.00	0	0	0	0	0	0
SANTA CRUZ	2	7	3	4	489	244.50	69.86	1	3	278	(2)	(9)	(739)

1/EXCLUDES: PRIOR MONTH NET TOTALS OF: 72 CASES; 323 RECIPIENTS; \$28,364.
GRANT DIVERSION TOTALS OF: 0 CASES; \$0.
ZERO PAY TOTALS OF 33 CASES; 146 RECIPIENTS.

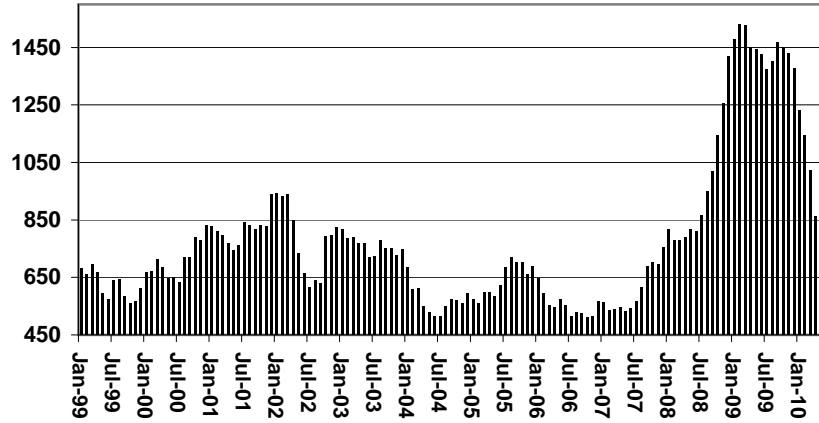
	CURRENT MO. CASES	CURRENT MO. RECIP.	CURRENT MO. DOLLARS	PRIOR MO. CASES	PRIOR MO. RECIP	PRIOR MO. DOLLARS
PASQUA/YAQUI	12	48	\$4,635	1	3	\$174
WM APACHE	1	3	\$278	0	0	\$0
SALT RIVER	0	0	\$0	0	0	\$0
SAN CARLOS	0	0	\$0	0	0	\$0
HOPÍ	0	0	\$0	0	0	\$0
TOTAL	13	51	\$4,913	1	3	\$174

CASES WITH GRANT UNDER \$100 (SEE TABLE 1C).

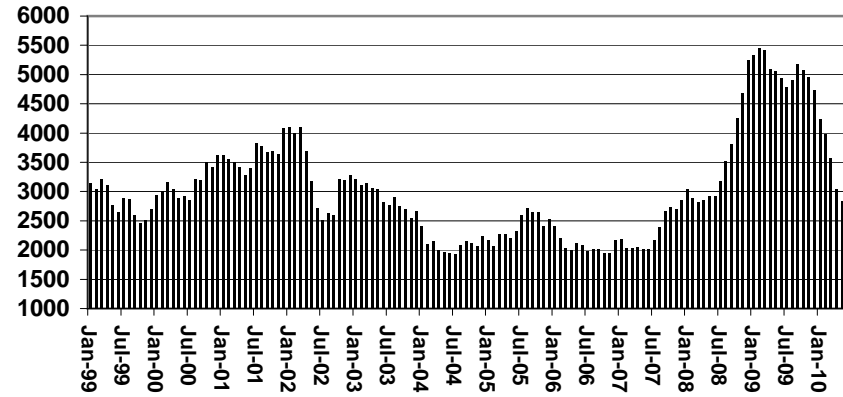
CHART 1A

CASH ASSISTANCE UNEMPLOYED PARENT PROGRAM COMPARISON OF CASES, RECIPIENTS, PAYMENTS & AVERAGE PAYMENTS FOR 1999, 2000, 2001, 2002, 2003, 2004, 2005, 2006, 2007, 2008, 2009, & 2010

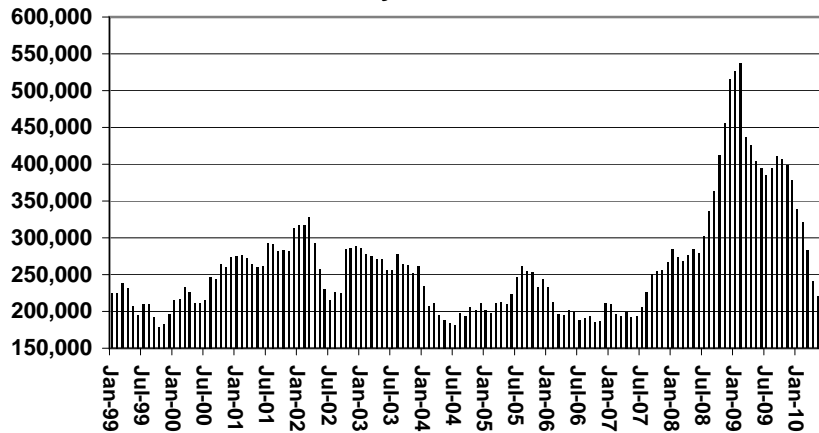
Cases



Recipients



Payments



Average Payment Per Recipient

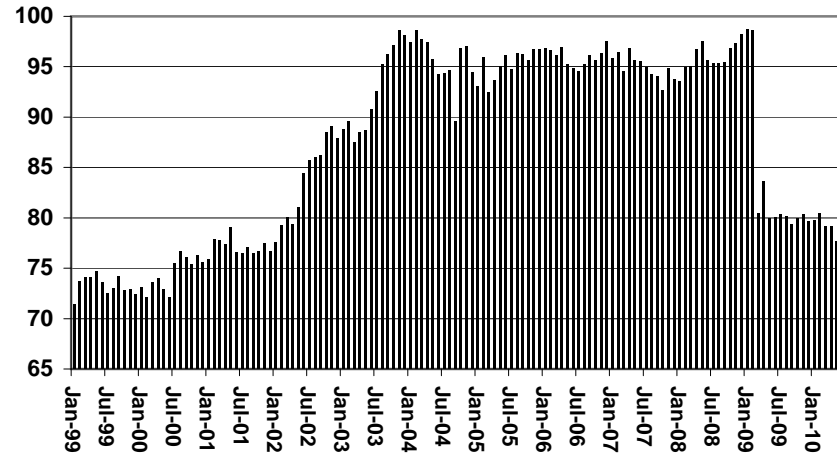


TABLE 1B 1/

CASH ASSISTANCE: ARIZONA
 CASES WITH GRANT UNDER \$100

	MAY 2010							CHANGE FROM					
								APRIL 2010			MAY 2009		
	FAMILIES (CASES)	PERSONS (RECIP.)	ADULTS	CHILDREN	TOTAL PAYMENTS	AVERAGE PAYMENT/ CASE	AVERAGE PAYMENT/ RECIP.	FAMILIES (CASES)	PERSONS (RECIP.)	TOTAL PAYMENTS	FAMILIES (CASES)	PERSONS (RECIP.)	TOTAL PAYMENTS
ARIZONA	868	1,756	442	1,314	58,981	67.95	33.59	(27)	(46)	(1,064)	(133)	(243)	(8,097)
DISTRICT I													
MARICOPA	560	1,170	277	893	38,356	68.49	32.78	(22)	(32)	(953)	(81)	(145)	(3,278)
DISTRICT II													
PIMA	145	291	86	205	9,836	67.83	33.80	0	4	367	14	43	411
DISTRICT III													
APACHE	2	4	1	3	227	113.50	56.75	2	4	191	2	4	227
COCONINO	3	9	3	6	244	81.33	27.11	(1)	0	(6)	(4)	(6)	(96)
NAVAJO	13	24	4	20	861	66.23	35.88	0	0	89	(3)	(7)	(371)
YAVAPAI	20	37	8	29	1,066	53.30	28.81	(5)	(15)	(411)	(18)	(31)	(1,296)
DISTRICT IV													
LA PAZ	6	8	2	6	452	75.33	56.50	(4)	(7)	(251)	1	(1)	154
MOHAVE	29	60	19	41	1,729	59.62	28.82	0	(5)	(130)	(17)	(31)	(1,745)
YUMA	17	31	9	22	1,504	88.47	48.52	4	4	439	(3)	(10)	(122)
DISTRICT V													
GILA	9	12	2	10	512	56.89	42.67	1	1	89	0	2	(84)
PINAL	37	60	16	44	2,237	60.46	37.28	0	(1)	(184)	(8)	(29)	(764)
DISTRICT VI													
COCHISE	16	30	8	22	1,200	75.00	40.00	(5)	(7)	(550)	(11)	(20)	(757)
GRAHAM	5	9	2	7	383	76.60	42.56	1	4	63	(4)	(6)	(275)
GREENLEE	0	0	0	0	0	0.00	0.00	0	0	0	(1)	(2)	(47)
SANTA CRUZ	6	11	5	6	374	62.33	34.00	2	4	183	0	(4)	(54)

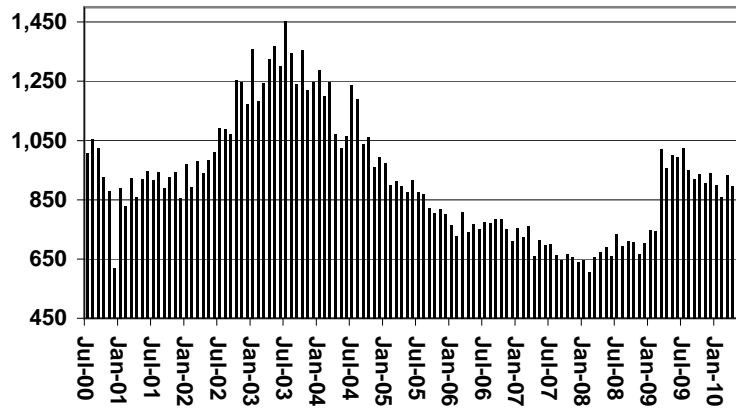
EXCLUDES: PRIOR MONTH NET TOTALS OF 549 CASES; 1,109 RECIPIENTS; \$33,755.

CHART 1B

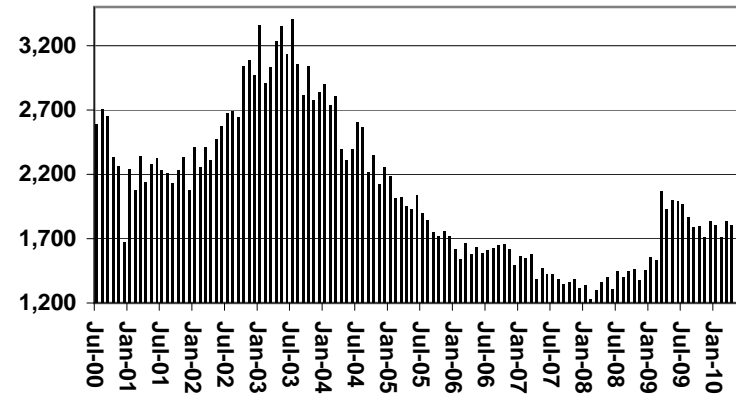
CASH ASSISTANCE PROGRAM CASES WITH GRANT UNDER \$100

FOR 1999, 2000, 2001, 2002, 2003, 2004, 2005, 2006, 2007, 2008, 2009, & 2010

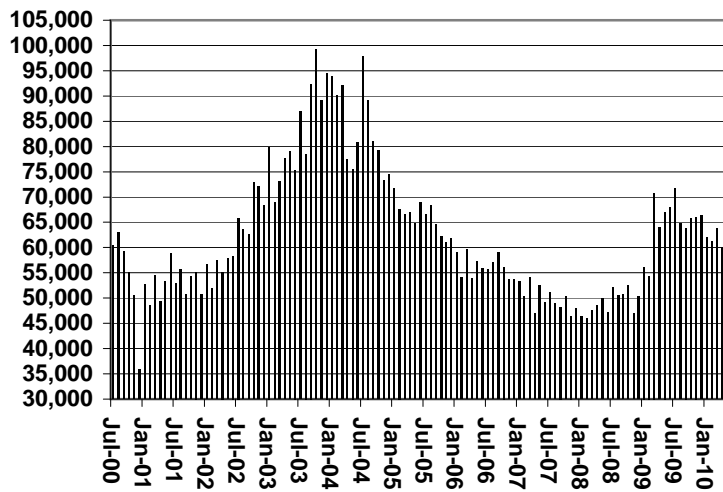
Cases



Recipients



Payments



Average Payment Per Recipient

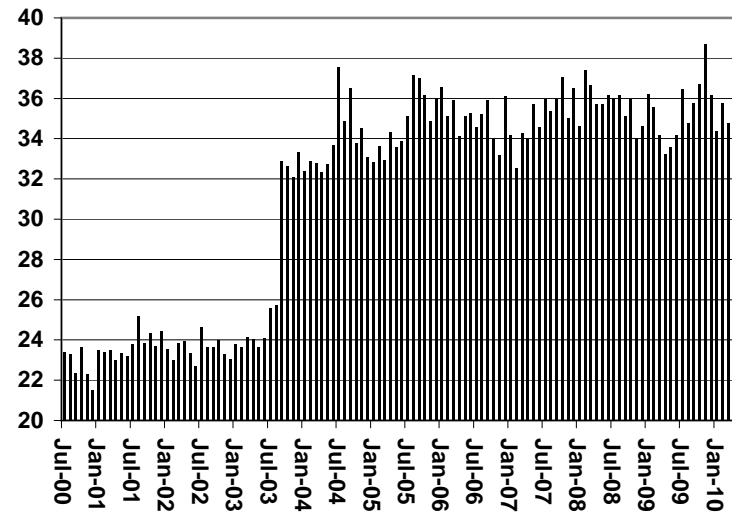


TABLE 1C 1/

CASH ASSISTANCE UNEMPLOYED PARENT PROGRAM: ARIZONA
 CASES WITH GRANT UNDER \$100

	MAY 2010								CHANGE FROM					
									APRIL 2010			MAY 2009		
	FAMILIES (CASES)	PERSONS (RECIP.)	ADULTS	CHILDREN	TOTAL PAYMENTS	AVERAGE PAYMENT/ CASE	AVERAGE PAYMENT/ RECIP.		FAMILIES (CASES)	PERSONS (RECIP.)	TOTAL PAYMENTS	FAMILIES (CASES)	PERSONS (RECIP.)	TOTAL PAYMENTS
ARIZONA	27	101	31	70	1,466	54.30	14.51	4	32	428	(16)	(34)	(626)	
DISTRICT I														
MARICOPA	19	66	17	49	1,029	54.16	15.59	(1)	12	129	(15)	(39)	(598)	
DISTRICT II														
PIMA	4	16	6	10	204	51.00	12.75	3	12	168	(1)	(1)	(76)	
DISTRICT III														
APACHE	0	0	0	0	0	0.00	0.00	0	0	0	0	0	0	
COCONINO	0	0	0	0	0	0.00	0.00	0	0	0	0	0	0	
NAVAJO	1	4	2	2	95	95.00	23.75	1	4	95	1	4	95	
YAVAPAI	0	0	0	0	0	0.00	0.00	0	0	0	0	0	0	
DISTRICT IV														
LA PAZ	0	0	0	0	0	0.00	0.00	0	0	0	0	0	0	
MOHAVE	1	4	2	2	36	36.00	9.00	1	4	36	1	4	36	
YUMA	0	0	0	0	0	0.00	0.00	0	0	0	(1)	(5)	(80)	
DISTRICT V														
GILA	0	0	0	0	0	0.00	0.00	0	0	0	0	0	0	
PINAL	2	11	4	7	102	51.00	9.27	0	0	0	0	7	33	
DISTRICT VI														
COCHISE	0	0	0	0	0	0.00	0.00	0	0	0	0	0	0	
GRAHAM	0	0	0	0	0	0.00	0.00	0	0	0	(1)	(4)	(36)	
GREENLEE	0	0	0	0	0	0.00	0.00	0	0	0	0	0	0	
SANTA CRUZ	0	0	0	0	0	0.00	0.00	0	0	0	0	0	0	

EXCLUDES: PRIOR MONTH NET TOTALS OF 40 CASES; 134 RECIPIENTS; \$1,921.

CHART 1C

CASH ASSISTANCE UNEMPLOYED PARENT PROGRAM

CASES WITH GRANT UNDER \$100

FOR 1999, 2000, 2001, 2002, 2003, 2004, 2005, 2006, 2007, 2008, 2009, & 2010

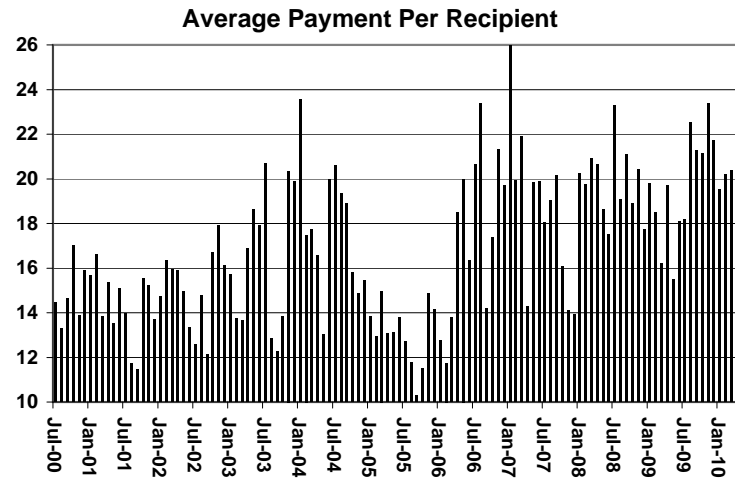
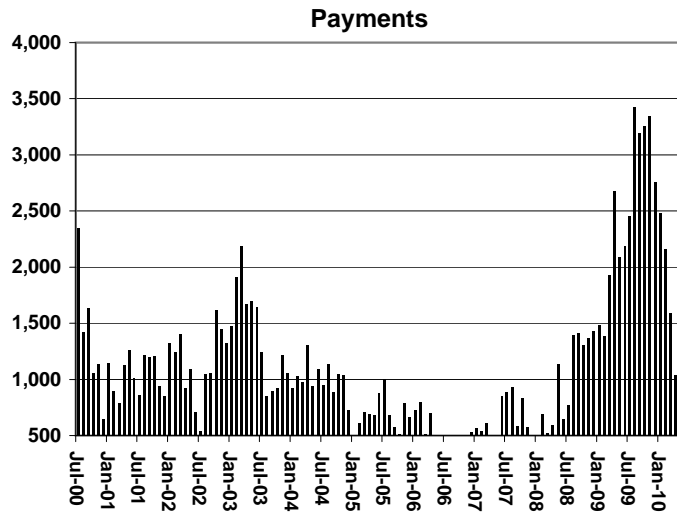
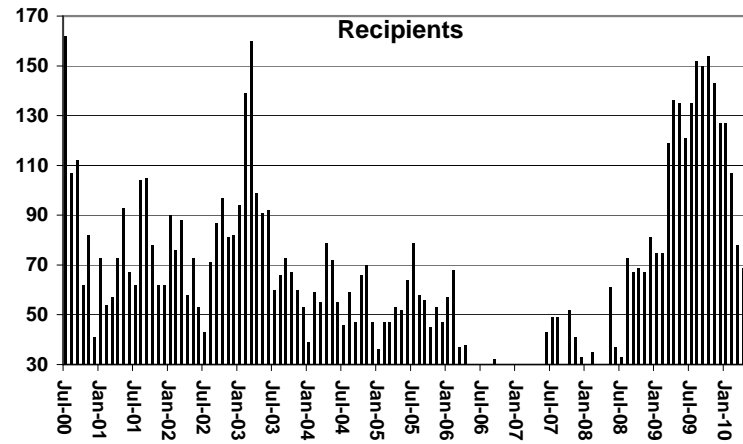
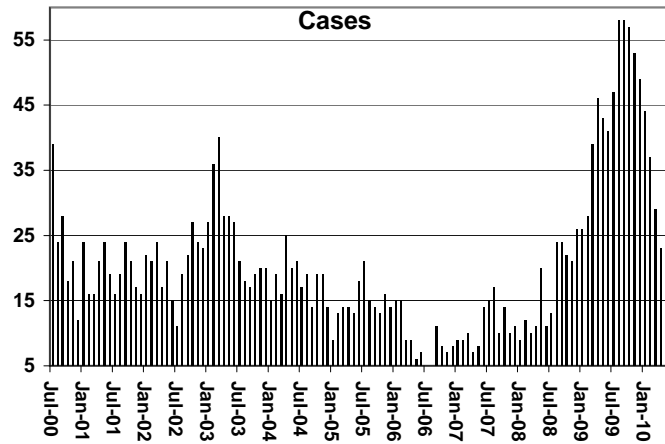


TABLE 4

TUBERCULOSIS CONTROL: ARIZONA 1/

	MAY 2010						CHANGE FROM					
				APRIL 2010			MAY 2009					
	NUMBER OF CASES	PERSONS (RECIP.)	TOTAL PAYMENTS	AVERAGE PAYMENT/ CASE	AVERAGE PAYMENT/ RECIP.	NUMBER OF CASES	PERSONS (RECIP.)	TOTAL PAYMENTS	NUMBER OF CASES	PERSONS (RECIP.)	TOTAL PAYMENTS	
ARIZONA	1	1	173	173.00	173.00	0	0	0	(2)	(2)	(218)	
DISTRICT I												
MARICOPA	1	1	173	173.00	173.00	0	0	0	0	0	0	
DISTRICT II												
PIMA	0	0	0	0.00	0.00	0	0	0	0	0	0	
DISTRICT III	0	0	0	0.00	0.00	0	0	0	0	0	0	
APACHE	0	0	0	0.00	0.00	0	0	0	0	0	0	
COCONINO	0	0	0	0.00	0.00	0	0	0	0	0	0	
NAVAJO	0	0	0	0.00	0.00	0	0	0	0	0	0	
YAVAPAI	0	0	0	0.00	0.00	0	0	0	0	0	0	
DISTRICT IV	0	0	0	0.00	0.00	0	0	0	(1)	(1)	(173)	
LA PAZ	0	0	0	0.00	0.00	0	0	0	0	0	0	
MOHAVE	0	0	0	0.00	0.00	0	0	0	0	0	0	
YUMA	0	0	0	0.00	0.00	0	0	0	(1)	(1)	(173)	
DISTRICT V	0	0	0	0.00	0.00	0	0	0	0	0	0	
GILA	0	0	0	0.00	0.00	0	0	0	0	0	0	
PINAL	0	0	0	0.00	0.00	0	0	0	0	0	0	
DISTRICT VI	0	0	0	0.00	0.00	0	0	0	(1)	(1)	(45)	
COCHISE	0	0	0	0.00	0.00	0	0	0	(1)	(1)	(45)	
GRAHAM	0	0	0	0.00	0.00	0	0	0	0	0	0	
GREENLEE	0	0	0	0.00	0.00	0	0	0	0	0	0	
SANTA CRUZ	0	0	0	0.00	0.00	0	0	0	0	0	0	

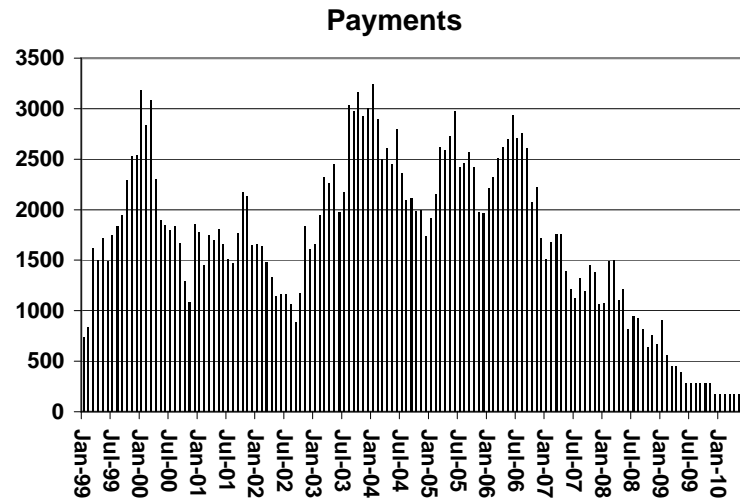
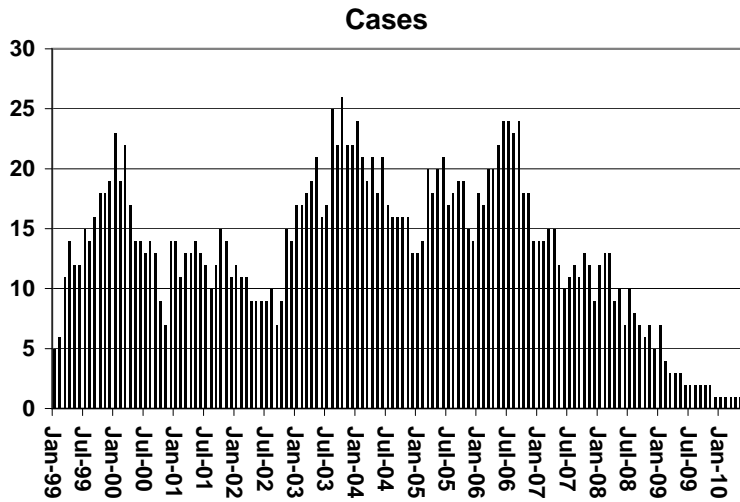
1/EXCLUDES: PRIOR MONTH NET TOTALS OF : 0 CASES; 0 RECIPIENTS; \$0.

CHART 4

TUBERCULOSIS CONTROL PROGRAM

COMPARISON OF CASES, PAYMENTS & AVERAGE PAYMENTS

FOR 1999, 2000, 2001, 2002, 2003, 2004, 2005, 2006, 2007, 2008, 2009, & 2010



Average Payment Per Case

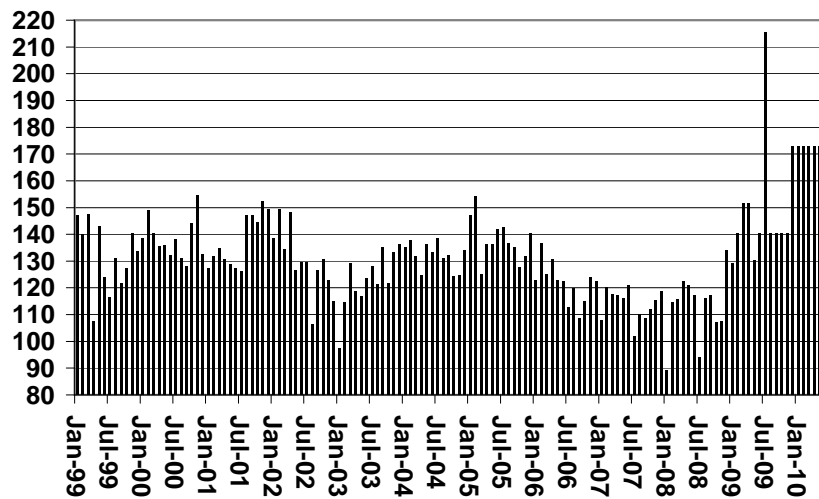


TABLE 6

SUPPLEMENTAL NUTRITION ASSISTANCE PROGRAM: ARIZONA 1

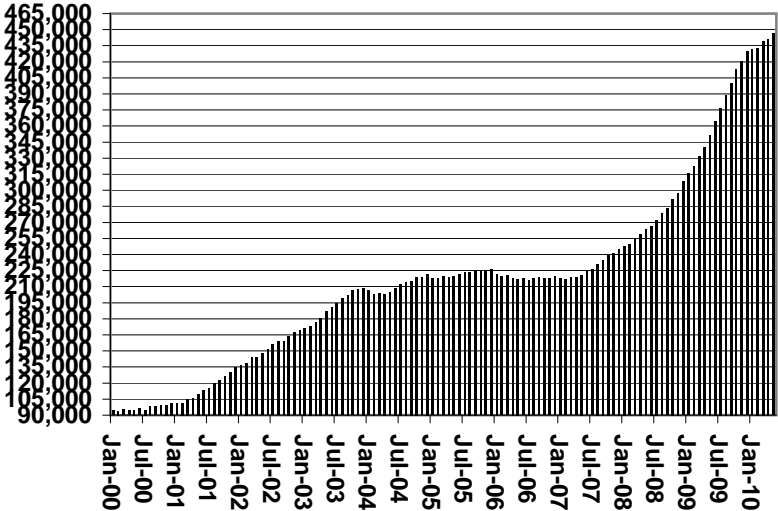
	CHANGE FROM												
	MAY 2010							APRIL 2010			MAY 2009		
	HOUSEHOLDS	PERSONS	ADULTS	CHILDREN	TOTAL COUPON ISSUANCE	AVERAGE ALLOT./ HOUSEHOLD	AVERAGE ALLOT./ PERSON	HOUSEHOLDS	PERSONS	TOTAL COUPON ISSUANCE	HOUSEHOLDS	PERSONS	TOTAL COUPON ISSUANCE
ARIZONA	446,370	1,031,075	524,304	506,771	131,368,332	294.30	127.41	4,833	10,427	2,237,208	94,862	191,197	20,180,055
DISTRICT I													
MARICOPA	244,745	565,966	269,444	296,522	72,415,104	295.88	127.95	2,587	5,337	1,623,495	59,286	121,302	12,438,366
DISTRICT II													
PIMA	75,970	163,189	89,947	73,242	21,193,750	278.98	129.87	778	1,477	287,118	15,785	28,995	3,315,559
DISTRICT III													
APACHE	9,598	27,251	14,544	12,707	3,366,373	350.74	123.53	70	(35)	748,049	3,457	8,225	995,722
COCONINO	9,337	23,172	12,304	10,868	2,918,846	312.61	125.96	20	(67)	(259,797)	1,676	1,847	219,966
NAVAJO	12,479	33,228	17,874	15,354	4,135,541	331.40	124.46	61	118	(811,581)	(608)	(2,295)	(318,374)
YAVAPAI	13,960	28,609	16,882	11,727	3,575,525	256.13	124.98	58	148	53,821	2,877	5,562	566,244
DISTRICT IV													
LA PAZ	1,915	3,967	2,289	1,678	509,685	266.15	128.48	3	58	5,141	263	488	43,572
MOHAVE	19,524	41,916	24,882	17,034	5,294,384	271.17	126.31	187	467	502,716	3,822	9,672	1,014,767
YUMA	14,906	39,318	19,954	19,364	4,722,491	316.82	120.11	788	2,481	424,771	2,446	5,886	686,676
DISTRICT V													
GILA	5,706	12,470	7,339	5,131	1,640,183	287.45	131.53	65	131	(100,385)	1,108	2,033	245,525
PINAL	20,560	50,663	26,309	24,354	6,492,578	315.79	128.15	233	444	(238,757)	2,578	4,886	499,793
DISTRICT VI													
COCHISE	9,840	21,459	12,118	9,341	2,679,741	272.33	124.88	(42)	(116)	(22,484)	1,256	2,554	266,680
GRAHAM	3,233	7,679	4,240	3,439	971,775	300.58	126.55	7	(19)	65,613	574	1,187	138,326
GREENLEE	502	1,117	640	477	135,550	270.02	121.35	(20)	(56)	13,182	56	86	5,599
SANTA CRUZ	4,095	11,071	5,538	5,533	1,316,806	321.56	118.94	38	59	(53,694)	286	769	61,634

1/EXCLUDES: PRIOR MONTH NET TOTALS OF : 10,467 CASES; 25,677 RECIPIENTS; \$1,582,709.
 AGED CANCELATIONS: 6,979 CASES; 8,361 RECIPIENTS; 402,155.
 SNAP COUPON CONVERSIONS: 0 CASES; 0 RECIPIENTS; \$0.
 SNAP REINSTATED: 0 CASES; \$0.
 SNAP ZERO PAY: 13,212 CASES; 53,353 RECIPIENTS.
 SNAP CHILD ONLY: 62,325 CASES; 138,561 RECIPIENTS; \$17,982,437.

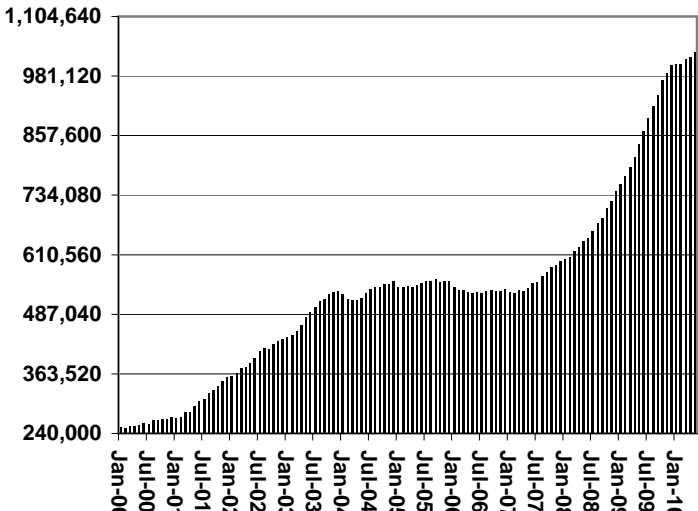
CHART 6

SUPPLEMENTAL NUTRITION ASSISTANCE PROGRAM (SNAP) COMPARISON OF HOUSEHOLDS, RECIPIENTS, PAYMENTS & AVERAGE PAYMENTS FOR 1999, 2000, 2001, 2002, 2003, 2004, 2005, 2006, 2007, 2008, 2009, & 2010

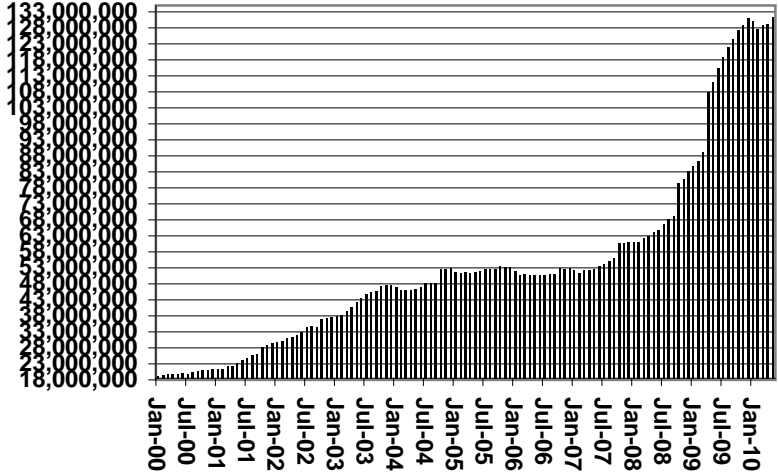
Households



Recipients



Payments



Average Payment Per Household

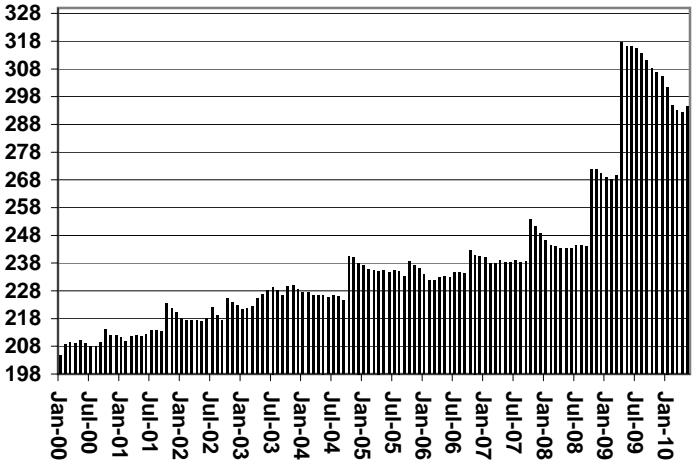


TABLE 7A
MEDICAL ASSISTANCE PROGRAM

RECIPIENTS

MAY 2010

	SOBRA WOMAN 133% FPL	SOBRA CHILD	ADULT W/O CHILD 100% FPL	FOSTER CARE	1931 36% FPL	FEDERAL EMERGENCY SERVICES	INFANTS	ADULT W/O CHILD 40% FPL	MEDICAL W/SPEND DOWN	SOBRA WOMAN 100% FPL	SOBRA CHILD 100% FPL	TRANSITIONAL MEDICAL T1 - T4	1931 100% FPL	YATI	OTHER	TOTAL CASES
ARIZONA	10,255	64,478	59,432	11,963	335,281	63,859	49,247	161,850	7,053	3,833	227,635	45,463	120,100	344	27,046	1,187,839
DISTRICT I																
MARICOPA	5,567	36,534	28,960	6,197	186,837	50,324	29,692	82,420	3,837	1,967	133,963	23,697	62,179	209	13,889	666,272
DISTRICT II																
PIMA	1,479	9,655	11,002	3,305	48,576	6,380	6,697	28,357	836	597	32,866	6,892	19,799	81	4,570	181,092
DISTRICT III																
APACHE	190	1,431	1,007	44	11,128	115	969	5,424	166	78	4,470	869	2,899	1	386	29,177
COCONINO	302	1,371	1,572	127	8,538	391	1,112	4,679	150	115	4,873	1,092	2,911	7	401	27,641
NAVAJO	312	2,229	1,735	147	12,587	331	1,390	6,598	197	136	5,732	1,354	3,877	5	571	37,201
YAVAPAI	385	1,764	2,620	438	7,566	1,398	1,259	5,040	326	126	6,214	1,547	3,972	14	1,201	33,870
DISTRICT IV																
LA PAZ	36	229	276	17	1,229	139	143	781	25	13	738	193	435	0	149	4,403
MOHAVE	381	2,138	3,025	324	11,514	632	1,552	7,614	530	191	8,458	1,863	5,241	4	1,528	44,995
YUMA	568	2,363	2,772	310	11,794	1,558	1,915	4,647	282	209	9,568	3,386	6,127	5	1,247	46,751
DISTRICT V																
GILA	126	665	760	99	4,402	138	551	2,613	110	57	1,969	429	1,312	2	338	13,571
PINAL	520	3,920	2,689	600	17,766	1,380	2,203	7,975	351	182	9,905	2,111	5,652	9	1,303	56,566
DISTRICT VI																
COCHISE	184	1,135	1,651	245	6,923	492	882	3,115	142	75	4,176	978	2,731	3	839	23,571
GRAHAM	94	449	462	73	2,609	52	368	1,364	46	33	1,454	362	946	1	147	8,460
GREENLEE	11	50	70	8	403	6	55	177	11	4	268	68	162	2	38	1,333
SANTA CRUZ	100	545	831	29	3,409	523	459	1,046	44	50	2,981	622	1,857	1	439	12,936

TABLE 7B
MEDICAL ASSISTANCE PROGRAM
RECIPIENTS

CHANGE FROM
APRIL 2010

	SOBRA WOMAN 133% FPL	SOBRA CHILD	ADULT W/O CHILD 100% FPL	FOSTER CARE	1931 36% FPL	FEDERAL EMERGENCY SERVICES	INFANTS	ADULT W/O CHILD 40% FPL	MEDICAL W/SPEND DOWN	SOBRA WOMAN 100% FPL	SOBRA CHILD 100% FPL	TRANSITIONAL MEDICAL T1 - T4	1931 100% FPL	YATI	OTHER	TOTAL CASES
ARIZONA	64	(638)	(1,388)	23	7,929	(2,628)	(265)	2,301	163	(140)	(2,061)	(390)	(1,523)	0	161	1,608
DISTRICT I																
MARICOPA	33	(128)	(517)	9	3,269	(2,020)	(88)	1,414	124	(38)	(998)	402	(628)	(2)	36	868
DISTRICT II																
PIMA	6	(210)	(235)	16	647	(440)	(88)	259	(16)	(39)	(198)	36	(116)	2	43	(333)
DISTRICT III																
APACHE	(13)	(19)	(37)	2	326	3	(18)	(4)	13	(18)	(225)	16	(154)	0	14	(114)
COCONINO	(1)	(1)	(34)	(1)	198	(8)	(9)	36	16	(8)	(115)	(18)	(150)	(3)	6	(92)
NAVAJO	(2)	(26)	(141)	(2)	447	(20)	(1)	(5)	16	0	(225)	(81)	(183)	0	6	(217)
YAVAPAI	(8)	(6)	(110)	0	262	(20)	(38)	59	(3)	2	(34)	22	(109)	1	14	32
DISTRICT IV																
LA PAZ	4	9	2	0	(5)	(8)	(4)	(9)	1	(1)	13	3	10	0	3	18
MOHAVE	(7)	(62)	(55)	9	111	(66)	1	84	17	5	19	52	(39)	1	1	71
YUMA	30	(13)	43	7	1,311	68	(15)	186	(18)	(13)	119	(821)	238	0	26	1,148
DISTRICT V																
GILA	3	(9)	(58)	(2)	110	1	25	57	(4)	8	(18)	(5)	(58)	1	1	52
PINAL	10	(88)	(129)	(13)	730	(47)	4	134	21	(15)	(194)	24	(183)	(2)	1	253
DISTRICT VI																
COCHISE	(5)	(47)	(73)	(2)	188	(36)	(8)	3	7	(7)	(31)	(6)	(33)	1	8	(41)
GRAHAM	7	(29)	(25)	0	130	(1)	(13)	64	(8)	(9)	(82)	22	(80)	0	1	(23)
GREENLEE	2	(5)	(3)	0	8	(2)	(5)	1	1	0	(8)	3	(19)	1	5	(21)
SANTA CRUZ	5	(4)	(16)	0	197	(32)	(8)	22	(4)	(7)	(84)	(39)	(19)	0	(4)	7

TABLE 7C
MEDICAL ASSISTANCE PROGRAM
RECIPIENTS

CHANGE FROM

MAY 2009

	SOBRA WOMAN 133% FPL	SOBRA CHILD	ADULT W/O CHILD 100% FPL	FOSTER CARE	1931 36% FPL	FEDERAL EMERGENCY SERVICES	INFANTS	ADULT W/O CHILD 40% FPL	MEDICAL W/SPEND DOWN	SOBRA WOMAN 100% FPL	SOBRA CHILD 100% FPL	TRANSITIONAL MEDICAL T1 - T4	3E 1931 100% FPL	YATI	OTHER	TOTAL CASES
ARIZONA	(804)	1,008	13,360	593	14,519	(26,117)	1,213	41,284	918	(174)	27,275	8,126	19,146	63	1,962	102,372
DISTRICT I																
MARICOPA	(136)	622	8,002	430	10,031	(20,083)	1,390	24,370	402	(52)	19,010	5,253	12,727	49	1,333	63,348
DISTRICT II																
PIMA	(244)	(11)	2,393	107	1,143	(4,142)	(174)	7,123	7	22	3,168	947	2,637	9	178	13,163
DISTRICT III																
APACHE	(29)	167	(33)	(2)	180	(2)	(32)	1,214	74	(19)	310	147	360	(1)	41	2,375
COCONINO	(7)	0	323	(11)	519	(179)	(30)	1,084	27	(13)	447	112	352	1	19	2,644
NAVAJO	(27)	(10)	209	15	292	(35)	(3)	1,168	18	(23)	307	248	283	3	(10)	2,435
YAVAPAI	(49)	(34)	471	(19)	273	(239)	(51)	978	43	(11)	921	346	540	2	116	3,287
DISTRICT IV																
LA PAZ	4	22	40	9	(22)	(47)	(16)	98	(3)	1	72	49	69	0	(8)	268
MOHAVE	(91)	31	576	49	398	(242)	31	1,275	123	0	833	170	545	2	139	3,839
YUMA	(25)	(41)	385	33	676	(389)	52	1,099	81	(5)	671	151	548	(1)	(16)	3,219
DISTRICT V																
GILA	(16)	(11)	123	11	119	(24)	39	359	24	7	31	130	27	2	10	831
PINAL	(57)	252	540	(11)	588	(461)	50	1,509	125	(30)	823	423	652	(5)	89	4,487
DISTRICT VI																
COCHISE	(78)	(4)	216	(13)	157	(176)	21	461	21	(25)	338	59	151	(2)	60	1,186
GRAHAM	(27)	(1)	14	(3)	(23)	(13)	(40)	285	(13)	(12)	104	79	34	1	(3)	382
GREENLEE	(11)	(8)	10	2	(19)	(2)	(3)	22	0	(1)	70	42	54	2	19	177
SANTA CRUZ	(11)	34	91	(4)	207	(83)	(21)	239	(11)	(13)	170	(30)	167	1	(5)	731

CHART 7

MEDICAL ASSISTANCE PROGRAM

COMPARISON OF RECIPIENTS

FOR 1999, 2000, 2001, 2002, 2003, 2004, 2005, 2006, 2007, 2008, 2009, & 2010

Total Recipients

