



DEPARTMENT OF ECONOMIC SECURITY

Your Partner For A Stronger Arizona

State of Arizona

Department of Economic Security

Family Assistance Administration

Statistical Bulletin

June, 2010

Phone: (602) 542-3678

<https://www.azdes.gov/appreports.aspx>

**** STATISTICAL BULLETIN ****
ARIZONA DEPARTMENT OF ECONOMIC SECURITY
FAMILY ASSISTANCE ADMINISTRATION
BOX 6123, PHOENIX, ARIZONA 85005
PHONE (602) 542-3678

JUNE 2010

THIS ISSUE OF THE STATISTICAL BULLETIN COMPARES JUNE 2010 DATA FOR EACH OF THE INDICATED PROGRAMS WITH THE INFORMATION FOR MAY 2010 AND JUNE 2009. STATEWIDE SUMMARIES OF ACTIVITY WITHIN EACH OF THE SPECIFIC PROGRAMS FOR THIS REPORT PERIOD ARE DISCUSSED BELOW. THE TABLES COMPARE CURRENT AND PRIOR MONTH DATA. DISTRICT AND COUNTY COMPARISONS ARE PROVIDED WITHIN THIS BULLETIN

TANF SUMMARY

COMPARING TO MAY 2010, JUNE 2010 CASES DECREASED BY 1,673 (4.82%) TO 33,013. RECIPIENTS DECREASED BY 3,568 (4.79%) TO 70,928. PAYMENTS DECREASED BY \$363,330 (4.95%) TO \$6,969,351. AVERAGE PAYMENT PER CASE DECREASED BY \$0.29 (0.14%) TO \$211.11. PAYMENT PER RECIPIENT DECREASED BY \$0.17 (0.17%) TO \$98.26.

COMPARING TO JUNE 2009, JUNE 2010 CASES DECREASED BY 5,280 (13.79%). RECIPIENTS DECREASED BY 12,936 (15.42%). TOTAL PAYMENTS DECREASED BY \$1,229,555 (15.00%). THE AVERAGE PAYMENT PER CASE DECREASED BY \$3.00 (1.40%). THE AVERAGE PAYMENT PER RECIPIENT INCREASED BY \$0.50 (0.51%).

CASH ASSISTANCE (CA)

COMPARING TO MAY 2010, JUNE 2010 CASES DECREASED BY 1,584 (4.80%) TO 31,409. RECIPIENTS DECREASED BY 3,281 (4.70%) TO 66,512. PAYMENTS DECREASED BY \$345,228 (4.90%) TO \$6,705,968. AVERAGE PAYMENT PER CASE DECREASED BY \$0.22 (0.10%) TO \$213.50. PAYMENT PER RECIPIENT DECREASED BY \$0.21 (0.21%) TO \$100.82.

COMPARING TO JUNE 2009, JUNE 2010 CASES DECREASED BY 4,425 (12.35%). RECIPIENTS DECREASED BY 10,310 (13.42%). TOTAL PAYMENTS DECREASED BY \$1,027,999 (13.29%). THE AVERAGE PAYMENT PER CASE DECREASED BY \$2.33 (1.08%). THE AVERAGE PAYMENT PER RECIPIENT INCREASED BY \$0.15 (0.15%).

CASH ASSISTANCE UNEMPLOYED PARENT PROGRAM (CA-UP)

COMPARING TO MAY 2010, JUNE 2010 CASES DECREASED BY 57 (7.14%) TO 741. RECIPIENTS DECREASED BY 204 (7.17%) TO 2,642. PAYMENTS DECREASED BY \$15,555 (7.04%) TO \$205,483. AVERAGE PAYMENT PER CASE INCREASED BY \$0.31 (0.11%) TO \$277.30. PAYMENT PER RECIPIENT INCREASED BY \$0.11 (0.15%) TO \$77.78.

COMPARING TO JUNE 2009, JUNE 2010 CASES DECREASED BY 685 (48.04%). RECIPIENTS DECREASED BY 2,290 (46.43%). TOTAL PAYMENTS DECREASED BY \$189,283 (47.95%). THE AVERAGE PAYMENT PER CASE INCREASED BY \$0.47 (0.17%). THE AVERAGE PAYMENT PER RECIPIENT DECREASED BY \$2.26 (2.83%).

CASH ASSISTANCE WITH GRANT UNDER \$100 (CA-MOE)

COMPARING TO MAY 2010, JUNE 2010 CASES DECREASED BY 31 (3.57%) TO 837. RECIPIENTS DECREASED BY 71 (4.04%) TO 1,685. PAYMENTS DECREASED BY \$2,570 (4.36%) TO \$56,411. AVERAGE PAYMENT PER CASE DECREASED BY \$0.55 (0.81%) TO \$67.40. AVERAGE PAYMENT PER RECIPIENT DECREASED BY \$0.11 (0.33%) TO \$33.48.

COMPARING TO JUNE 2009, JUNE 2010 CASES DECREASED BY 155 (15.63%). RECIPIENTS DECREASED BY 304 (15.28%). TOTAL PAYMENTS DECREASED BY \$11,572 (17.02%). THE AVERAGE PAYMENT PER CASE DECREASED BY \$1.13 (1.65%). THE AVERAGE PAYMENT PER RECIPIENT DECREASED BY \$0.70 (2.05%).

CASH ASSISTANCE UNEMPLOYED PARENT PROGRAM WITH GRANT UNDER \$100 (CA-UP-MOE) NEW PROGRAM STARTING 7/01

COMPARING TO MAY 2010, JUNE 2010 CASES DECREASED BY 1 (3.70%) TO 26. RECIPIENTS DECREASED BY 12 (11.88%) TO 89. PAYMENTS INCREASED BY \$23 (1.57%) TO \$1,489. AVERAGE PAYMENT PER CASE INCREASED BY \$2.97 (5.47%) TO \$57.27. PAYMENT PER RECIPIENT INCREASED BY \$2.22 (15.30%) TO \$16.73.

COMPARING TO JUNE 2009, JUNE 2010 CASES DECREASED BY 15 (36.59%). RECIPIENTS DECREASED BY 32 (2.18%). TOTAL PAYMENTS DECREASED BY \$701 (32.01%). THE AVERAGE PAYMENT PER CASE INCREASED BY \$3.86 (7.23%). THE AVERAGE PAYMENT PER RECIPIENT DECREASED BY \$1.37 (7.57%).

TUBERCULOSIS CONTROL PROGRAM (TC)

COMPARING TO MAY 2010, JUNE 2010 CASES INCREASED BY 0 (0.00%) TO 1. RECIPIENTS INCREASED BY 0 (0.00%) TO 1. PAYMENTS INCREASED BY \$0 (0.00%) TO \$173. AVERAGE PAYMENT PER CASE INCREASED BY \$38.11 (22.03%) TO \$211.11. AVERAGE PAYMENT PER RECIPIENT INCREASED BY \$0.00 (0.00%) TO \$173.00.

COMPARING TO JUNE 2009, JUNE 2010 CASES DECREASED BY 1 (50.00%). RECIPIENTS DECREASED BY 1 (50.00%). TOTAL PAYMENTS DECREASED BY \$108 (38.43%). THE AVERAGE PAYMENT PER CASE INCREASED BY \$70.61 (50.26%). THE AVERAGE PAYMENT PER RECIPIENT INCREASED BY \$32.50 (23.13%).

SUPPLEMENTAL NUTRITION ASSISTANCE PROGRAM (SNAP)

COMPARING TO MAY 2010, JUNE 2010 SUPPLEMENTAL NUTRITION ASSISTANCE HOUSEHOLDS INCREASED BY 3,940 (0.88%) TO 450,310. PERSONS RECEIVING SUPPLEMENTAL NUTRITION ASSISTANCE INCREASED BY 6,292 (0.61%) TO 1,037,367. TOTAL COUPON ISSUANCE INCREASED BY \$723,820 (0.55%) TO \$132,092,152. THE AVERAGE HOUSEHOLD ALLOTMENT DECREASED BY \$0.96 (0.33%) TO \$293.34. THE AVERAGE ALLOTMENT PER PERSON DECREASED BY \$0.08 (0.06%) TO \$127.33.

COMPARING TO JUNE 2009, JUNE 2010 SUPPLEMENTAL NUTRITION ASSISTANCE HOUSEHOLDS INCREASED BY 85,386 (23.40%). PERSONS RECEIVING SUPPLEMENTAL NUTRITION ASSISTANCE INCREASED BY 169,370 (19.51%). TOTAL COUPON ISSUANCE INCREASED BY \$16,676,738 (14.45%). THE AVERAGE ALLOTMENT PER HOUSEHOLD DECREASED BY \$22.93 (7.25%). THE AVERAGE ALLOTMENT PER PERSON DECREASED BY \$5.64 (4.24%).

MEDICAL ASSISTANCE PROGRAM (MA) NEW TABLE INCLUDES PROP. 204 CATEGORIES

COMPARING TO MAY 2010, JUNE 2010 TOTAL RECIPIENTS TOTAL RECIPIENTS INCREASED BY 2,100 (0.18%). SOBRA WOMEN AT 140% FPL INCREASED BY 138 (1.35%). SOBRA CHILDREN INCREASED BY 2,972 (4.61%). ADULTS W/O CHILD AT 100% INCREASED BY 1,507 (2.54%). FOSTER CARE INCREASED BY 57 (0.48%). 1931 AT 36% FPL DECREASED BY 1,452 (0.43%). EMERGENCY SERVICES DECREASED BY 2,679 (4.20%). INFANTS DECREASED BY 402 (0.82%). ADULT W/O CHILD AT 140% INCREASED BY 1,458 (0.90%). MEDICAL W/SPEND DOWN INCREASED BY 182 (2.58%). SOBRA WOMAN AT 100% INCREASED BY 46 (1.20%). SOBRA CHILD AT 100% INCREASED BY 162 (0.07%). TRANSITIONAL MEDICAL DECREASED BY 709 (1.56%). 1931 AT 100% INCREASED BY 570 (0.47%). YATI INCREASED BY 6 (1.74%). ALL OTHER CATEGORIES INCREASED BY 244 (0.90%).

COMPARING TO JUNE 2009, JUNE 2010 TOTAL RECIPIENTS TOTAL RECIPIENTS INCREASED BY 85,690 (7.76%). SOBRA WOMEN AT 140% FPL DECREASED BY 493 (4.53%). SOBRA CHILDREN INCREASED BY 1,881 (2.87%). ADULTS W/O CHILD AT 100% INCREASED BY 13,193 (27.63%). FOSTER CARE INCREASED BY 544 (4.74%). 1931 AT 36% FPL INCREASED BY 9,841 (3.04%). EMERGENCY SERVICES DECREASED BY 28,961 (32.13%). INFANTS INCREASED BY 270 (0.56%). ADULT W/O CHILD AT 140% INCREASED BY 36,732 (29.02%). MEDICAL W/SPEND DOWN INCREASED BY 1,099 (17.91%). SOBRA WOMAN AT 100% DECREASED BY 38 (0.97%). SOBRA CHILD AT 100% INCREASED BY 23,517 (11.51%). TRANSITIONAL MEDICAL INCREASED BY 8,799 (24.47%). 1931 AT 100% INCREASED BY 16,923 (16.31%). YATI INCREASED BY 66 (23.24%). ALL OTHER CATEGORIES INCREASED BY 2,317 (9.28%).

TANF SUMMARY

TABLES 1, 1A, 1B, & 1C: ARIZONA 1/

	JUNE 2010							MAY 2010			CHANGE FROM JUNE 2009		
	FAMILIES (CASES)	PERSONS (RECIP.)	ADULTS	CHILDREN	TOTAL PAYMENTS	AVERAGE PAYMENT/ CASE	AVERAGE PAYMENT/ RECIP.	FAMILIES (CASES)	PERSONS (RECIP.)	TOTAL PAYMENTS	FAMILIES (CASES)	PERSONS (RECIP.)	TOTAL PAYMENTS
	ARIZONA	33,013	70,928	17,381	53,547	6,969,351	211.11	98.26	(1,673)	(3,568)	(363,330)	(5,280)	(12,936)
DISTRICT I													
MARICOPA	20,529	44,869	10,631	34,238	4,308,354	209.87	96.02	(952)	(2,190)	(210,363)	(2,410)	(6,119)	(578,565)
DISTRICT II													
PIMA	5,207	10,517	2,719	7,798	1,067,908	205.09	101.54	(370)	(683)	(75,022)	(1,241)	(2,810)	(284,792)
DISTRICT III													
APACHE	93	202	53	149	21,859	235.04	108.21	(7)	(17)	(2,166)	91	198	21,419
COCONINO	157	317	61	256	31,316	199.46	98.79	(21)	(50)	(4,836)	(57)	(138)	(10,900)
NAVAJO	1,347	3,508	1,118	2,390	362,238	268.92	103.26	(39)	(102)	(14,910)	(103)	(173)	(27,510)
YAVAPAI	524	971	189	782	99,893	190.64	102.88	(54)	(90)	(9,713)	(185)	(403)	(34,752)
DISTRICT IV													
LA PAZ	153	314	82	232	28,482	186.16	90.71	(6)	(10)	(1,862)	(27)	(69)	(7,501)
MOHAVE	1,019	2,020	530	1,490	206,575	202.72	102.26	(29)	(50)	(4,023)	(198)	(529)	(43,856)
YUMA	817	1,731	317	1,414	170,018	208.10	98.22	(17)	(34)	(4,241)	(170)	(401)	(37,098)
DISTRICT V													
GILA	628	1,334	473	861	151,820	241.75	113.81	(30)	(45)	(4,503)	(66)	(147)	(16,364)
PINAL	1,455	3,069	731	2,338	295,820	203.31	96.39	(92)	(205)	(20,369)	(519)	(1,400)	(120,706)
DISTRICT VI													
COCHISE	624	1,185	253	932	127,429	204.21	107.54	(54)	(108)	(10,976)	(248)	(588)	(54,988)
GRAHAM	241	464	145	319	53,918	223.73	116.20	0	15	660	(64)	(136)	(13,220)
GREENLEE	26	53	12	41	5,375	206.73	101.42	0	1	126	(11)	(25)	(2,507)
SANTA CRUZ	193	374	67	307	38,346	198.68	102.53	(2)	0	(1,132)	(72)	(196)	(18,215)

1/EXCLUDES: PRIOR MONTH NET TOTALS OF 1,240 CASES; 3,029 RECIPIENTS; \$223,188.
 GRANT DIVERSION TOTALS OF: 1,146 CASES;\$864,015.
 ZERO PAY TOTALS OF 2,598 CASES; 7,366 RECIPIENTS.
 TANF CHILD ONLY: 16,510 CASES; 27,191 RECIPIENTS; \$3,143,731.
 RRP: 452 CASES; 749 RECIPIENTS; \$99,070.

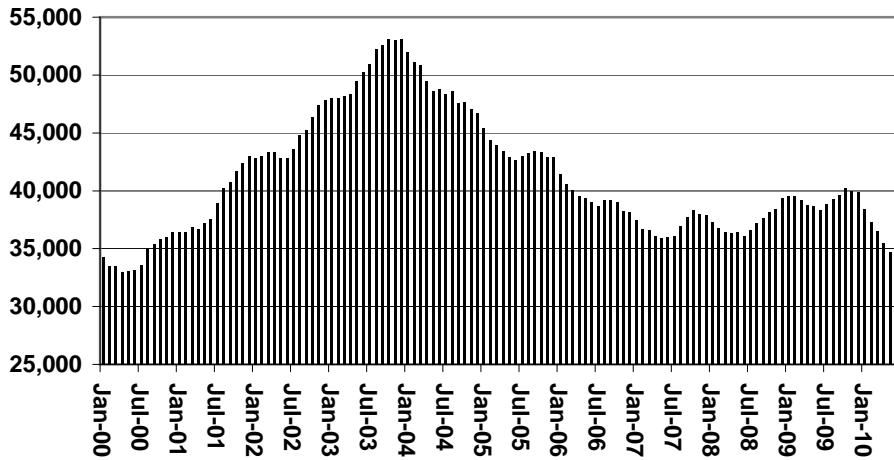
	CURRENT MO. CASES	CURRENT MO. RECIP.	CURRENT MO. DOLLARS	PRIOR MO. CASES	PRIOR MO. RECIP.	PRIOR MO. DOLLARS
PASQUAY/AQUI	286	786	\$84,265	19	55	\$4,424
WM APACHE	816	2,355	\$249,488	7	13	\$1,151
SALT RIVER	70	217	\$20,035	2	5	\$178
SAN CARLOS	540	1,175	\$139,050	17	45	\$3,274
HOPI	120	343	\$26,747	8	23	\$925
TOTAL	1,832	4,876	\$519,585	53	141	\$9,952

TANF SUMMARY

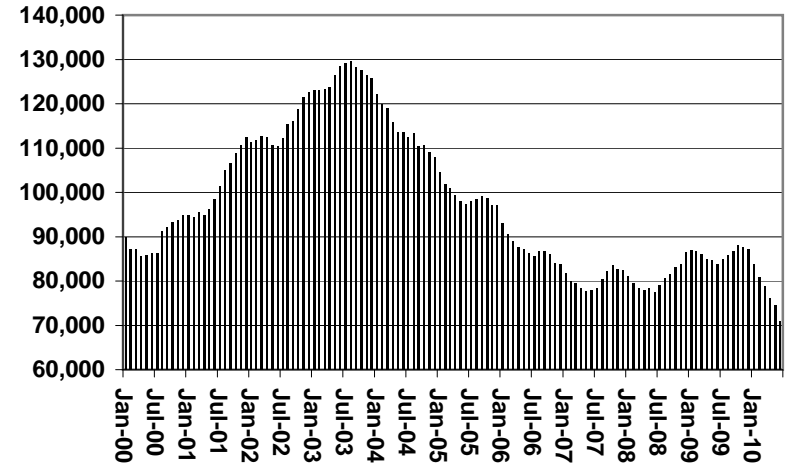
TABLES 1, 1A, 1B, & 1C

COMPARISON OF CASES, RECIPIENTS, PAYMENTS & AVERAGE PAYMENTS
FOR 2000, 2001, 2002, 2003, 2004, 2005, 2006, 2007, 2008, 2009, & 2010

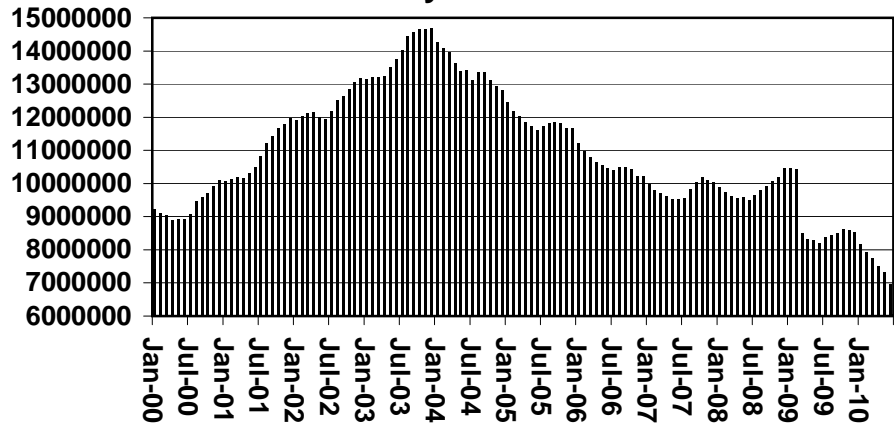
Cases



Recipients



Payments



Average Payments Per Recipient

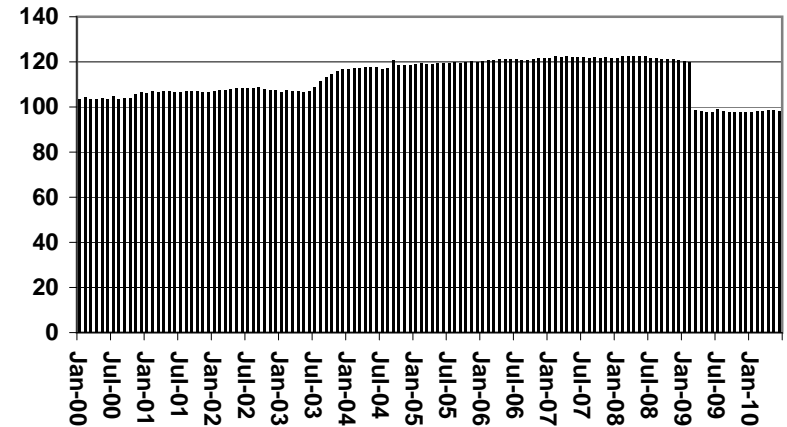


TABLE 1
CASH ASSISTANCE: ARIZONA 1/

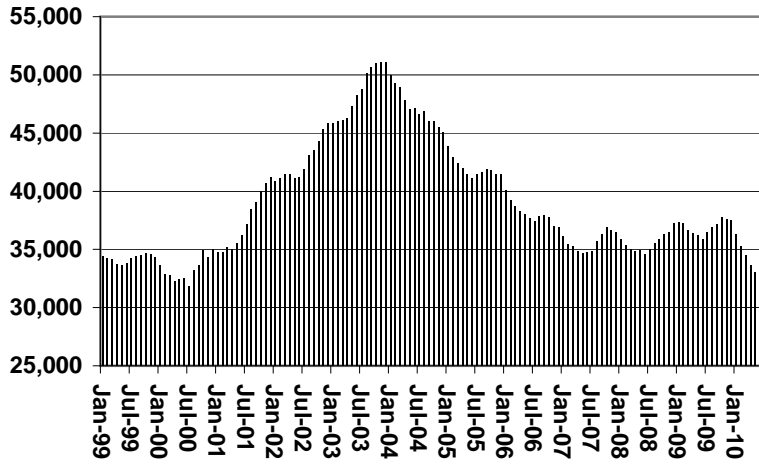
	JUNE 2010							CHANGE FROM			JUNE 2009		
	FAMILIES (CASES)	(RECIP.)	ADULTS	CHILDREN	TOTAL PAYMENTS	AVERAGE PAYMENT/ CASE	AVERAGE PAYMENT/ RECIP.	MAY 2010			JUNE 2009		
								FAMILIES (CASES)	PERSONS (RECIP.)	TOTAL PAYMENTS	FAMILIES (CASES)	PERSONS (RECIP.)	TOTAL PAYMENTS
ARIZONA	31,409	66,512	15,873	50,639	6,705,968	213.50	100.82	(1,584)	(3,281)	(345,228)	(4,425)	(10,310)	(1,027,999)
DISTRICT I													
MARICOPA	19,432	41,817	9,670	32,147	4,126,177	212.34	98.67	(902)	(1,999)	(196,033)	(1,954)	(4,820)	(475,144)
DISTRICT II													
PIMA	4,948	9,780	2,414	7,366	1,022,060	206.56	104.51	(337)	(585)	(69,954)	(1,093)	(2,327)	(245,246)
DISTRICT III													
APACHE	91	198	52	146	21,749	239.00	109.84	(7)	(17)	(2,049)	89	194	21,309
COCONINO	155	312	59	253	31,149	200.96	99.84	(19)	(44)	(4,620)	(51)	(126)	(9,920)
NAVAJO	1,331	3,467	1,102	2,365	359,880	270.38	103.80	(36)	(96)	(15,164)	(80)	(93)	(22,038)
YAVAPAI	497	910	169	741	97,319	195.81	106.94	(55)	(96)	(9,823)	(167)	(367)	(32,213)
DISTRICT IV													
LA PAZ	139	281	70	211	26,939	193.81	95.87	(12)	(29)	(2,603)	(27)	(62)	(6,726)
MOHAVE	972	1,902	481	1,421	199,731	205.48	105.01	(31)	(48)	(4,812)	(160)	(402)	(35,708)
YUMA	784	1,650	284	1,366	164,567	209.91	99.74	(19)	(31)	(4,109)	(153)	(340)	(32,790)
DISTRICT V													
GILA	617	1,304	462	842	149,868	242.90	114.93	(27)	(45)	(4,485)	(63)	(149)	(16,623)
PINAL	1,393	2,890	658	2,232	284,839	204.48	98.56	(84)	(200)	(20,819)	(424)	(1,035)	(96,207)
DISTRICT VI													
COCHISE	606	1,146	242	904	125,379	206.90	109.41	(52)	(105)	(10,818)	(205)	(464)	(46,515)
GRAHAM	233	442	137	305	53,098	227.89	120.13	(1)	9	712	(57)	(119)	(11,135)
GREENLEE	26	53	12	41	5,317	204.50	100.32	0	1	68	(10)	(23)	(2,462)
SANTA CRUZ	185	360	61	299	37,896	204.84	105.27	(2)	4	(719)	(70)	(177)	(16,581)
							CURRENT			PRIOR			
1/EXCLUDES: PRIOR MONTH NET TOTALS OF: 612 CASES; 1,601 RECIPIENTS; \$166,697.							CURRENT	MO.	CURRENT	MO.	PRIOR	MO.	PRIOR
GRANT DIVERSION TOTALS OF: 1,146 CASES;							MO. CASES	RECIP.	MO.	CASES	RECIP.	MO.	DOLLARS
ZERO PAY TOTALS OF 2,573 CASES; 7,249 RECIPIENTS.									DOLLARS				
							PASQUAY/AQUI	275	746	\$80,333	17	49	\$3,650
							WM APACHE	815	2,352	\$249,210	7	13	\$1,151
							SALT RIVER	70	217	\$20,035	2	5	\$178
							SAN CARLOS	540	1,175	\$139,050	17	45	\$3,274
							HOPI	120	343	\$26,747	8	23	\$925
CASES WITH GRANT UNDER \$100 (SEE TABLE 1B).							TOTAL	1,820	4,833	\$515,375	51	135	\$9,178

CHART 1

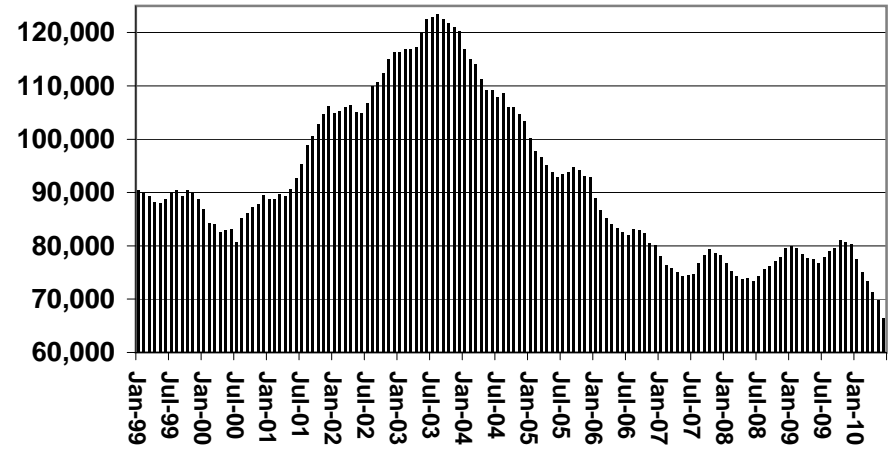
CASH ASSISTANCE PROGRAM

COMPARISON OF CASES, RECIPIENTS, PAYMENTS & AVERAGE PAYMENTS FOR 1999, 2000, 2001, 2002, 2003, 2004, 2005, 2006, 2007, 2008, 2009, & 2010

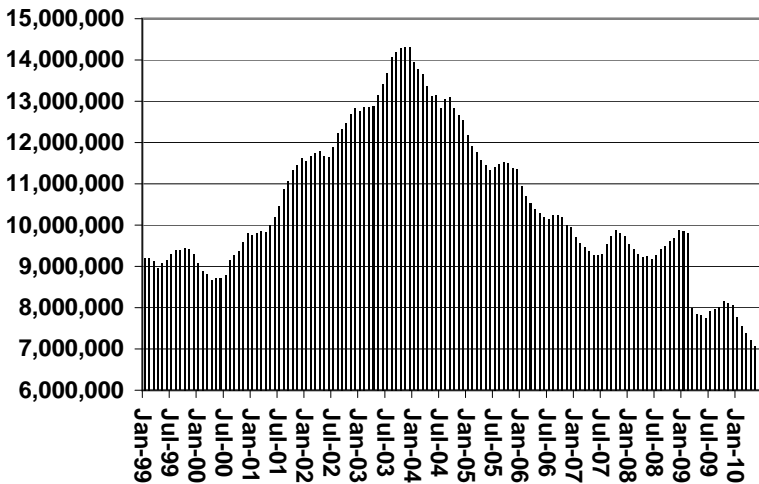
Cases



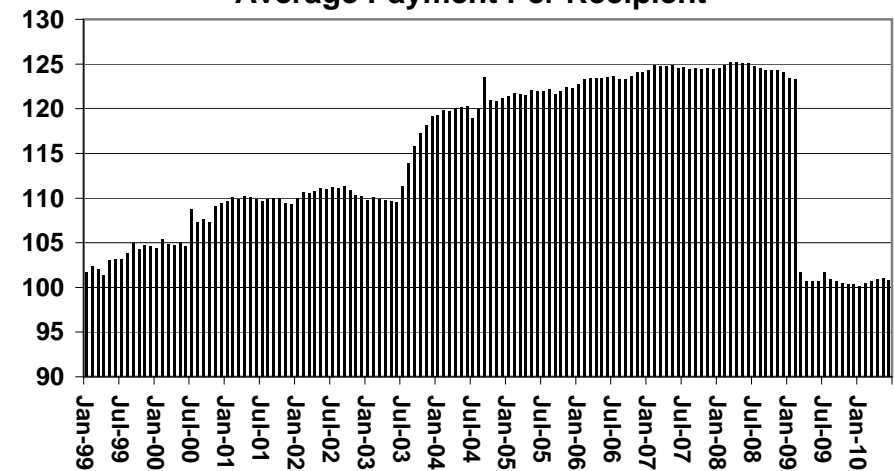
Recipients



Payments



Average Payment Per Recipient



**TABLE 1A
CA-UP**

CASH ASSISTANCE UNEMPLOYED PARENT PROGRAM: ARIZONA 1/

	JUNE 2010							CHANGE FROM			MAY 2010			JUNE 2009		
	FAMILIES (CASES)	PERSONS (RECIP.)	ADULTS	CHILDREN	TOTAL PAYMENTS	AVERAGE PAYMENT/ CASE	AVERAGE PAYMENT/ RECIP.	FAMILIES (CASES)	PERSONS (RECIP.)	TOTAL PAYMENTS	FAMILIES (CASES)	PERSONS (RECIP.)	TOTAL PAYMENTS			
ARIZONA	741	2,642	1,058	1,584	205,483	277.30	77.78	(57)	(204)	(15,555)	(685)	(2,290)	(189,283)			
DISTRICT I																
MARICOPA	518	1,825	672	1,153	143,777	277.56	78.78	(50)	(182)	(13,345)	(381)	(1,152)	(99,533)			
DISTRICT II																
PIMA	132	488	231	257	37,642	285.17	77.14	(11)	(40)	(3,234)	(122)	(439)	(36,280)			
DISTRICT III																
APACHE	0	0	0	0	0	0.00	0.00	0	0	0	0	0	0			
COCONINO	0	0	0	0	0	0.00	0.00	(1)	(2)	(139)	(2)	(7)	(555)			
NAVAJO	7	25	13	12	1,639	234.14	65.56	2	6	491	(16)	(62)	(5,103)			
YAVAPAI	6	19	8	11	1,373	228.83	72.26	0	1	(25)	(5)	(14)	(1,573)			
DISTRICT IV																
LA PAZ	4	14	6	8	992	248.00	70.86	2	8	642	(3)	(14)	(924)			
MOHAVE	16	59	29	30	4,751	296.94	80.53	1	3	461	(23)	(91)	(6,957)			
YUMA	13	43	21	22	3,630	279.23	84.42	(1)	(10)	(449)	(16)	(52)	(4,259)			
DISTRICT V																
GILA	5	19	9	10	1,389	277.80	73.11	0	1	(69)	1	5	309			
PINAL	34	131	61	70	8,901	261.79	67.95	3	18	709	(81)	(329)	(23,378)			
DISTRICT VI																
COCHISE	4	12	4	8	900	225.00	75.00	0	0	(108)	(24)	(89)	(7,400)			
GRAHAM	2	7	4	3	489	244.50	69.86	0	0	0	(8)	(24)	(2,028)			
GREENLEE	0	0	0	0	0	0.00	0.00	0	0	0	0	0	0			
SANTA CRUZ	0	0	0	0	0	0.00	0.00	(2)	(7)	(489)	(5)	(22)	(1,602)			

1/EXCLUDES: PRIOR MONTH NET TOTALS OF: 63 CASES; 244 RECIPIENTS; \$22,040.
GRANT DIVERSION TOTALS OF: 0 CASES; \$0.
ZERO PAY TOTALS OF 25 CASES; 117 RECIPIENTS.

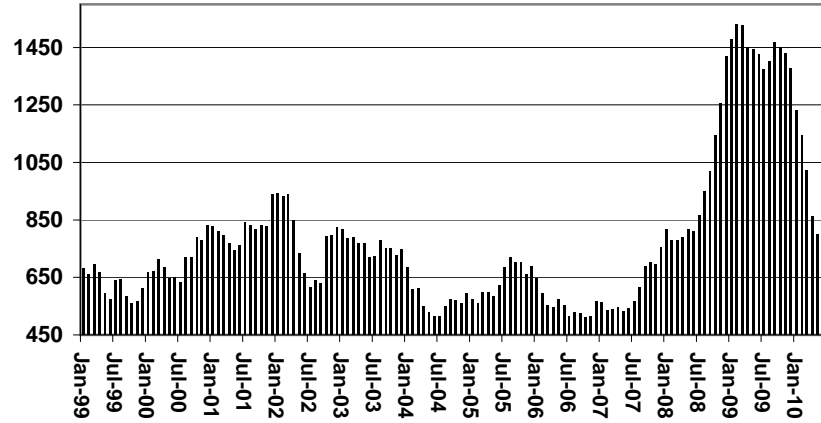
	CURRENT MO. CASES	CURRENT MO. RECIP.	CURRENT MO. DOLLARS	PRIOR MO. CASES	PRIOR MO. RECIP	PRIOR MO. DOLLARS
PASQUA/YAQUI	11	40	\$3,932	2	6	\$774
WM APACHE	1	3	\$278	0	0	\$0
SALT RIVER	0	0	\$0	0	0	\$0
SAN CARLOS	0	0	\$0	0	0	\$0
HOPI	0	0	\$0	0	0	\$0
TOTAL	12	43	\$4,210	2	6	\$774

CASES WITH GRANT UNDER \$100 (SEE TABLE 1C).

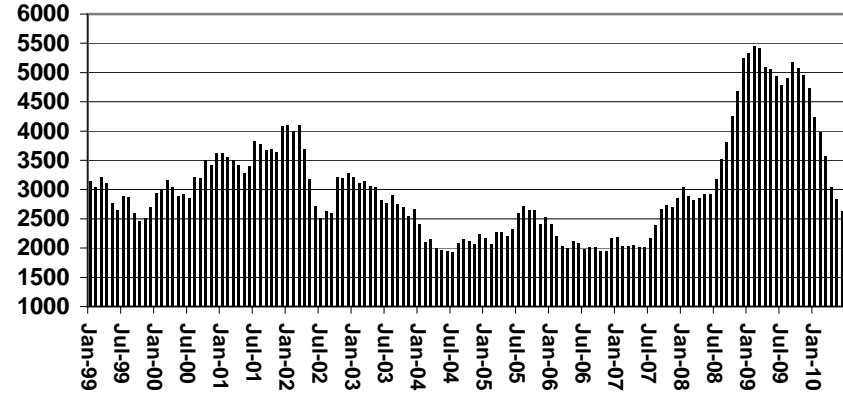
CHART 1A

CASH ASSISTANCE UNEMPLOYED PARENT PROGRAM COMPARISON OF CASES, RECIPIENTS, PAYMENTS & AVERAGE PAYMENTS FOR 1999, 2000, 2001, 2002, 2003, 2004, 2005, 2006, 2007, 2008, 2009, & 2010

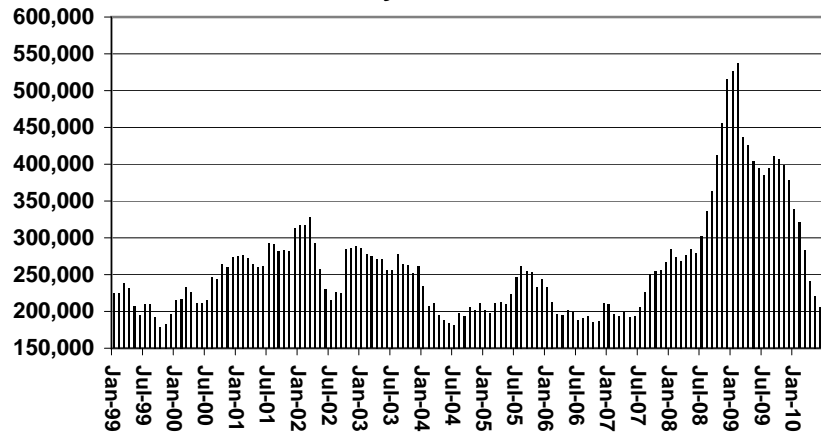
Cases



Recipients



Payments



Average Payment Per Recipient

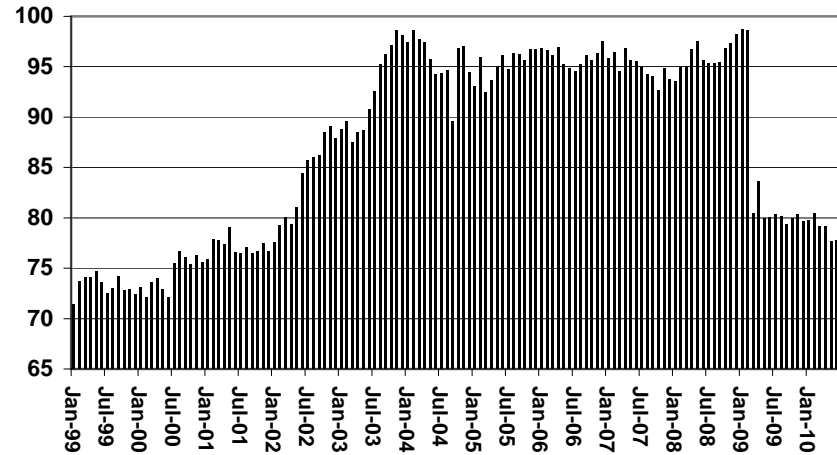


TABLE 1B 1/

CASH ASSISTANCE: ARIZONA
 CASES WITH GRANT UNDER \$100

	JUNE 2010							CHANGE FROM			JUNE 2009		
	FAMILIES		PERSONS (RECIP.)	ADULTS	CHILDREN	TOTAL PAYMENTS	AVERAGE PAYMENT/ CASE	AVERAGE PAYMENT/ RECIP.	MAY 2010		JUNE 2009		
	(CASES)								FAMILIES (CASES)	PERSONS (RECIP.)	TOTAL PAYMENTS	FAMILIES (CASES)	PERSONS (RECIP.)
ARIZONA	837	1,685	424	1,261	56,411	67.40	33.48	(31)	(71)	(2,570)	(155)	(304)	(11,572)
DISTRICT I													
MARICOPA	559	1,161	273	888	37,222	66.59	32.06	(1)	(9)	(1,134)	(62)	(117)	(3,354)
DISTRICT II													
PIMA	123	236	68	168	7,986	64.93	33.84	(22)	(55)	(1,850)	(27)	(50)	(3,333)
DISTRICT III													
APACHE	2	4	1	3	110	55.00	27.50	0	0	(117)	2	4	110
COCONINO	2	5	2	3	167	83.50	33.40	(1)	(4)	(77)	(4)	(5)	(425)
NAVAJO	9	16	3	13	719	79.89	44.94	(4)	(8)	(142)	(7)	(18)	(369)
YAVAPAI	21	42	12	30	1,201	57.19	28.60	1	5	135	(12)	(20)	(888)
DISTRICT IV													
LA PAZ	10	19	6	13	551	55.10	29.00	4	11	99	3	7	149
MOHAVE	31	59	20	39	2,093	67.52	35.47	2	(1)	364	(14)	(31)	(1,119)
YUMA	19	33	10	23	1,784	93.89	54.06	2	2	280	(1)	(9)	(6)
DISTRICT V													
GILA	6	11	2	9	563	93.83	51.18	(3)	(1)	51	(4)	(3)	(50)
PINAL	27	43	10	33	2,026	75.04	47.12	(10)	(17)	(211)	(14)	(38)	(1,131)
DISTRICT VI													
COCHISE	14	27	7	20	1,150	82.14	42.59	(2)	(3)	(50)	(19)	(35)	(1,073)
GRAHAM	6	15	4	11	331	55.17	22.07	1	6	(52)	2	10	(6)
GREENLEE	0	0	0	0	58	0.00	0.00	0	0	58	(1)	(2)	(45)
SANTA CRUZ	8	14	6	8	450	56.25	32.14	2	3	76	3	3	(32)

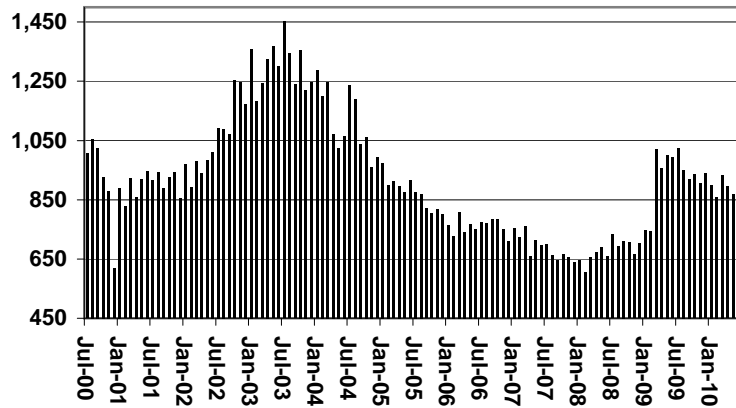
EXCLUDES: PRIOR MONTH NET TOTALS OF 535 CASES; 1,094 RECIPIENTS; \$33,009.

CHART 1B

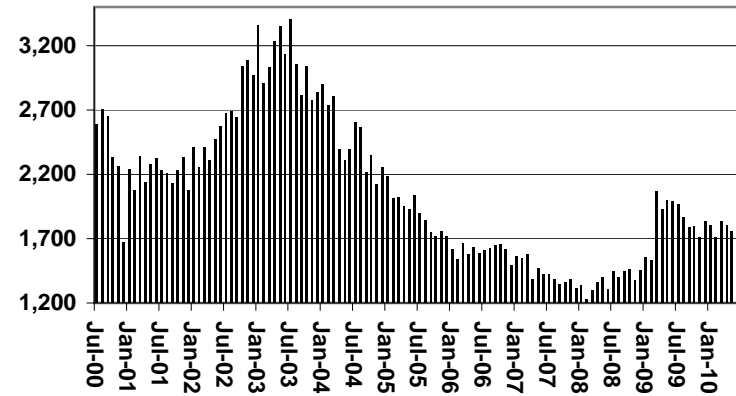
CASH ASSISTANCE PROGRAM CASES WITH GRANT UNDER \$100

FOR 1999, 2000, 2001, 2002, 2003, 2004, 2005, 2006, 2007, 2008, 2009, & 2010

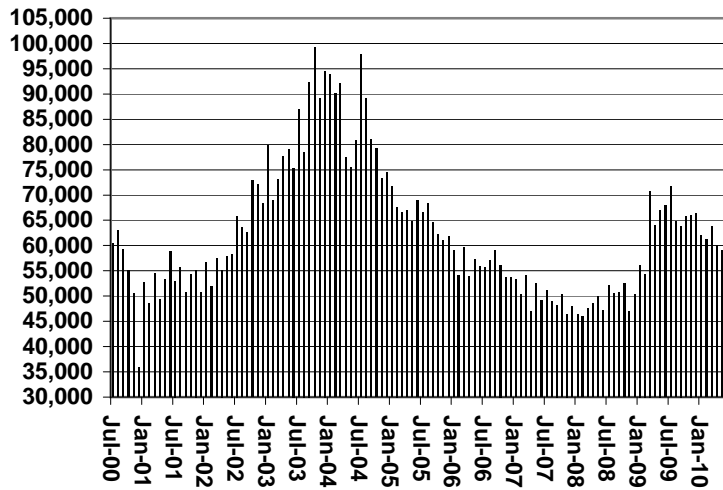
Cases



Recipients



Payments



Average Payment Per Recipient

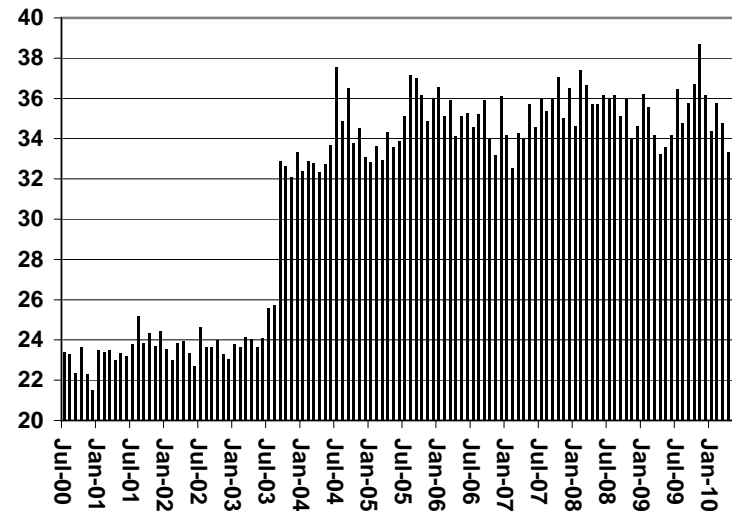


TABLE 1C 1/

CASH ASSISTANCE UNEMPLOYED PARENT PROGRAM: ARIZONA
 CASES WITH GRANT UNDER \$100

	JUNE 2010							CHANGE FROM					
								MAY 2010			JUNE 2009		
	FAMILIES (CASES)	PERSONS (RECIP.)	ADULTS	CHILDREN	TOTAL PAYMENTS	AVERAGE PAYMENT/ CASE	AVERAGE PAYMENT/ RECIP.	FAMILIES (CASES)	PERSONS (RECIP.)	TOTAL PAYMENTS	FAMILIES (CASES)	PERSONS (RECIP.)	TOTAL PAYMENTS
ARIZONA	26	89	26	63	1,489	57.27	16.73	(1)	(12)	23	(15)	(32)	(701)
DISTRICT I													
MARICOPA	20	66	16	50	1,178	58.90	17.85	1	0	149	(13)	(30)	(534)
DISTRICT II													
PIMA	4	13	6	7	220	55.00	16.92	0	(3)	16	1	6	67
DISTRICT III													
APACHE	0	0	0	0	0	0.00	0.00	0	0	0	0	0	0
COCONINO	0	0	0	0	0	0.00	0.00	0	0	0	0	0	0
NAVAJO	0	0	0	0	0	0.00	0.00	(1)	(4)	(95)	0	0	0
YAVAPAI	0	0	0	0	0	0.00	0.00	0	0	0	(1)	(2)	(78)
DISTRICT IV													
LA PAZ	0	0	0	0	0	0.00	0.00	0	0	0	0	0	0
MOHAVE	0	0	0	0	0	0.00	0.00	(1)	(4)	(36)	(1)	(5)	(72)
YUMA	1	5	2	3	37	37.00	7.40	1	5	37	0	0	(43)
DISTRICT V													
GILA	0	0	0	0	0	0.00	0.00	0	0	0	0	0	0
PINAL	1	5	2	3	54	54.00	10.80	(1)	(6)	(48)	0	2	10
DISTRICT VI													
COCHISE	0	0	0	0	0	0.00	0.00	0	0	0	0	0	0
GRAHAM	0	0	0	0	0	0.00	0.00	0	0	0	(1)	(3)	(51)
GREENLEE	0	0	0	0	0	0.00	0.00	0	0	0	0	0	0
SANTA CRUZ	0	0	0	0	0	0.00	0.00	0	0	0	0	0	0

EXCLUDES: PRIOR MONTH NET TOTALS OF 30 CASES; 90 RECIPIENTS; \$1,442.

CHART 1C

CASH ASSISTANCE UNEMPLOYED PARENT PROGRAM

CASES WITH GRANT UNDER \$100

FOR 1999, 2000, 2001, 2002, 2003, 2004, 2005, 2006, 2007, 2008, 2009, & 2010

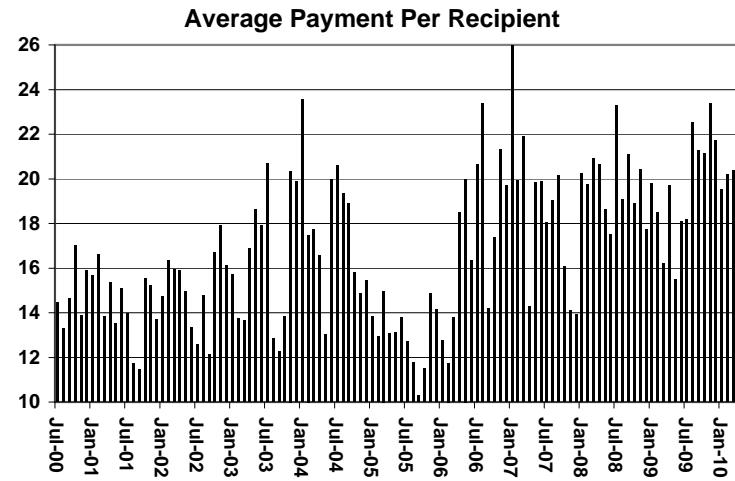
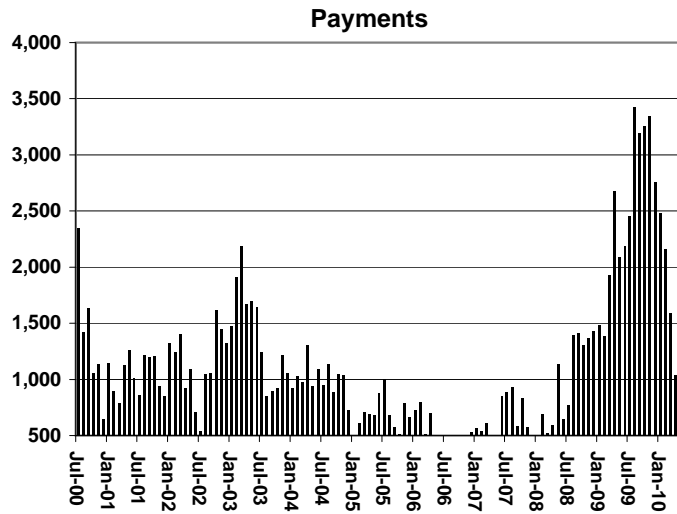
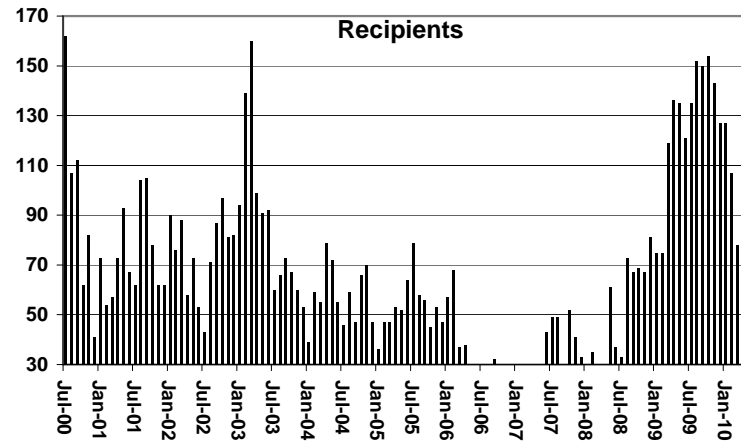
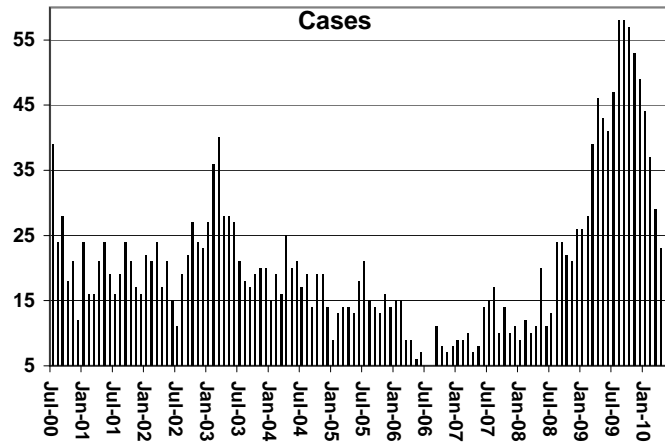


TABLE 4

TUBERCULOSIS CONTROL: ARIZONA 1/

	JUNE 2010					CHANGE FROM					
						MAY 2010			JUNE 2009		
	NUMBER OF CASES	PERSONS (RECIP.)	TOTAL PAYMENTS	AVERAGE PAYMENT/ CASE	AVERAGE PAYMENT/ RECIP.	NUMBER OF CASES	PERSONS (RECIP.)	TOTAL PAYMENTS	NUMBER OF CASES	PERSONS (RECIP.)	TOTAL PAYMENTS
ARIZONA	1	1	173	173.00	173.00	0	0	0	(1)	(1)	(108)
DISTRICT I											
MARICOPA	1	1	173	173.00	173.00	0	0	0	0	0	0
DISTRICT II											
PIMA	0	0	0	0.00	0.00	0	0	0	0	0	0
DISTRICT III											
APACHE	0	0	0	0.00	0.00	0	0	0	0	0	0
COCONINO	0	0	0	0.00	0.00	0	0	0	0	0	0
NAVAJO	0	0	0	0.00	0.00	0	0	0	0	0	0
YAVAPAI	0	0	0	0.00	0.00	0	0	0	0	0	0
DISTRICT IV											
LA PAZ	0	0	0	0.00	0.00	0	0	0	0	0	0
MOHAVE	0	0	0	0.00	0.00	0	0	0	0	0	0
YUMA	0	0	0	0.00	0.00	0	0	0	0	0	0
DISTRICT V											
GILA	0	0	0	0.00	0.00	0	0	0	0	0	0
PINAL	0	0	0	0.00	0.00	0	0	0	0	0	0
DISTRICT VI											
COCHISE	0	0	0	0.00	0.00	0	0	0	(1)	(1)	(108)
GRAHAM	0	0	0	0.00	0.00	0	0	0	0	0	0
GREENLEE	0	0	0	0.00	0.00	0	0	0	0	0	0
SANTA CRUZ	0	0	0	0.00	0.00	0	0	0	0	0	0

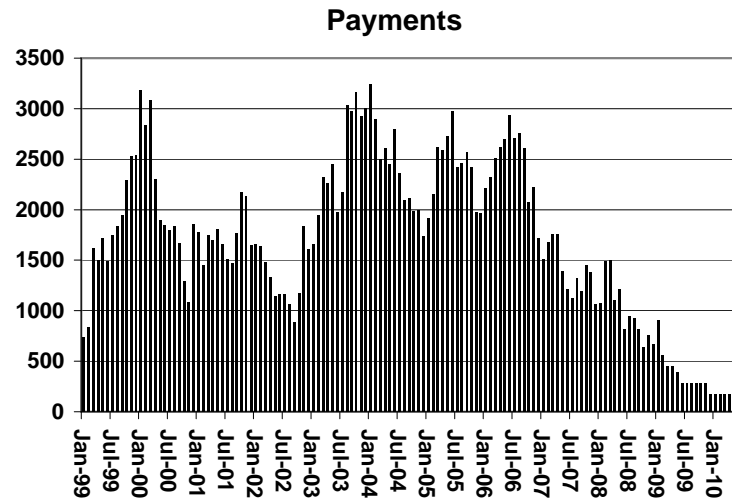
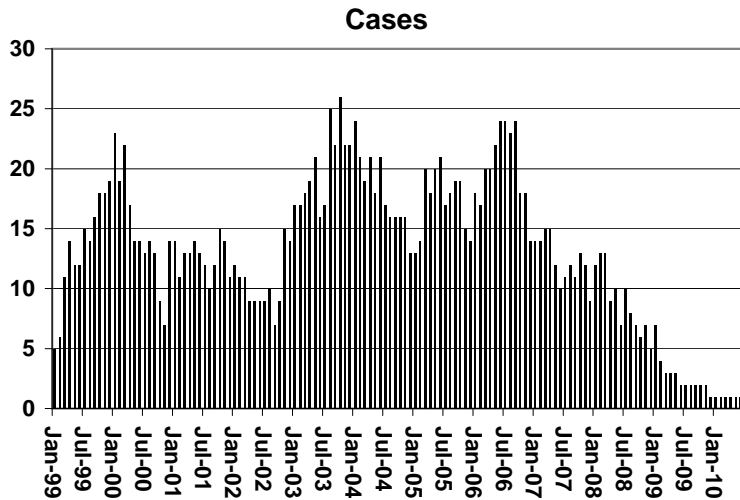
1/EXCLUDES: PRIOR MONTH NET TOTALS OF : 0 CASES; 0 RECIPIENTS; \$0.

CHART 4

TUBERCULOSIS CONTROL PROGRAM

COMPARISON OF CASES, PAYMENTS & AVERAGE PAYMENTS

FOR 1999, 2000, 2001, 2002, 2003, 2004, 2005, 2006, 2007, 2008, 2009, & 2010



Average Payment Per Case

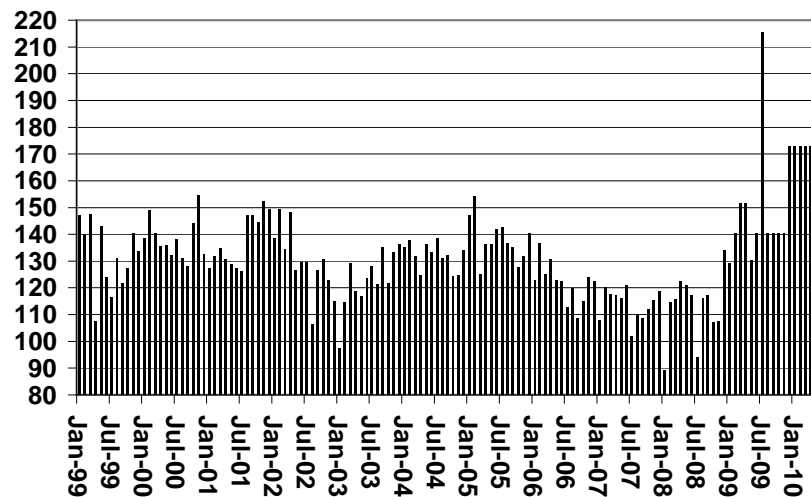


TABLE 6

SUPPLEMENTAL NUTRITION ASSISTANCE PROGRAM: ARIZONA 1

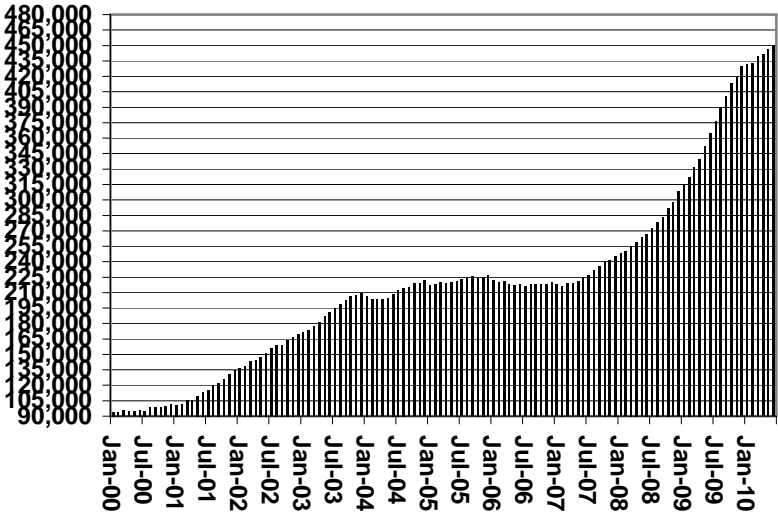
	CHANGE FROM												
	JUNE 2010							MAY 2010			JUNE 2009		
	HOUSEHOLDS	PERSONS	ADULTS	CHILDREN	TOTAL COUPON ISSUANCE	AVERAGE ALLOT./ HOUSEHOLD	AVERAGE ALLOT./ PERSON	HOUSEHOLDS	PERSONS	TOTAL COUPON ISSUANCE	HOUSEHOLDS	PERSONS	TOTAL COUPON ISSUANCE
ARIZONA	450,310	1,037,367	529,502	507,865	132,092,152	293.34	127.33	3,940	6,292	723,820	85,386	169,370	16,676,738
DISTRICT I													
MARICOPA	246,660	568,606	271,921	296,685	72,762,378	294.99	127.97	1,915	2,640	347,274	53,474	107,962	10,359,183
DISTRICT II													
PIMA	76,700	164,399	90,920	73,479	21,323,733	278.01	129.71	730	1,210	129,983	13,915	25,446	2,697,259
DISTRICT III													
APACHE	9,685	27,295	14,619	12,676	3,369,457	347.90	123.45	87	44	3,084	3,346	7,672	916,197
COCONINO	9,363	23,276	12,353	10,923	2,919,767	311.84	125.44	26	104	921	1,427	1,253	130,953
NAVAJO	12,514	33,221	17,946	15,275	4,133,180	330.28	124.41	35	(7)	(2,361)	(878)	(3,103)	(444,561)
YAVAPAI	14,044	28,665	16,965	11,700	3,565,547	253.88	124.39	84	56	(9,978)	2,660	4,988	477,250
DISTRICT IV													
LA PAZ	1,925	3,978	2,303	1,675	516,108	268.11	129.74	10	11	6,423	262	479	45,561
MOHAVE	19,659	41,937	25,029	16,908	5,305,213	269.86	126.50	135	21	10,829	3,658	9,093	934,915
YUMA	15,364	40,562	20,703	19,859	4,839,798	315.01	119.32	458	1,244	117,307	2,365	5,827	630,602
DISTRICT V													
GILA	5,803	12,579	7,433	5,146	1,664,669	286.86	132.34	97	109	24,486	1,060	1,837	220,736
PINAL	20,827	51,403	26,693	24,710	6,577,952	315.84	127.97	267	740	85,374	2,218	4,133	358,301
DISTRICT VI													
COCHISE	9,885	21,524	12,151	9,373	2,682,105	271.33	124.61	45	65	2,364	1,075	2,109	202,569
GRAHAM	3,251	7,719	4,257	3,462	975,177	299.96	126.33	18	40	3,402	522	1,038	116,749
GREENLEE	515	1,142	655	487	142,200	276.12	124.52	13	25	6,650	64	60	4,843
SANTA CRUZ	4,115	11,061	5,554	5,507	1,314,868	319.53	118.87	20	(10)	(1,938)	218	576	26,181

1/EXCLUDES: PRIOR MONTH NET TOTALS OF : 10,631 CASES; 25,494 RECIPIENTS; \$1,749,638.
 AGED CANCELATIONS: 7,364 CASES; 9,554 RECIPIENTS; 430,381.
 SNAP COUPON CONVERSIONS: 0 CASES; 0 RECIPIENTS; \$0.
 SNAP CHILD ONLY: 39,341 CASES; 93,891 RECIPIENTS; \$12,266,952.
 SNAP ZERO PAY: 13,221 CASES; 53,461 RECIPIENTS.

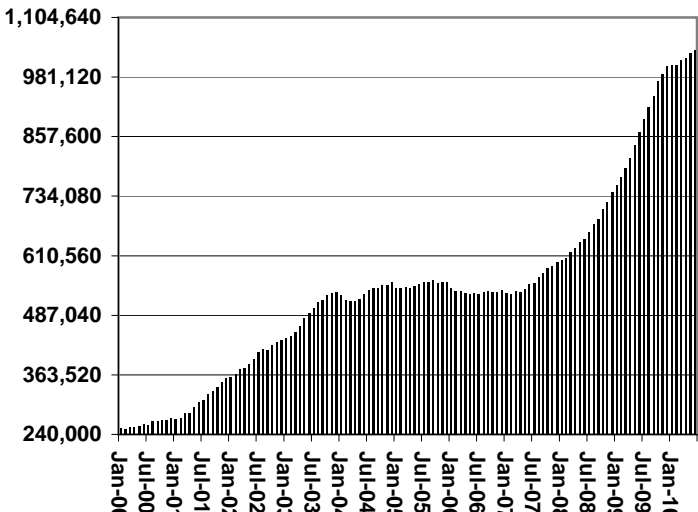
CHART 6

SUPPLEMENTAL NUTRITION ASSISTANCE PROGRAM (SNAP) COMPARISON OF HOUSEHOLDS, RECIPIENTS, PAYMENTS & AVERAGE PAYMENTS FOR 1999, 2000, 2001, 2002, 2003, 2004, 2005, 2006, 2007, 2008, 2009, & 2010

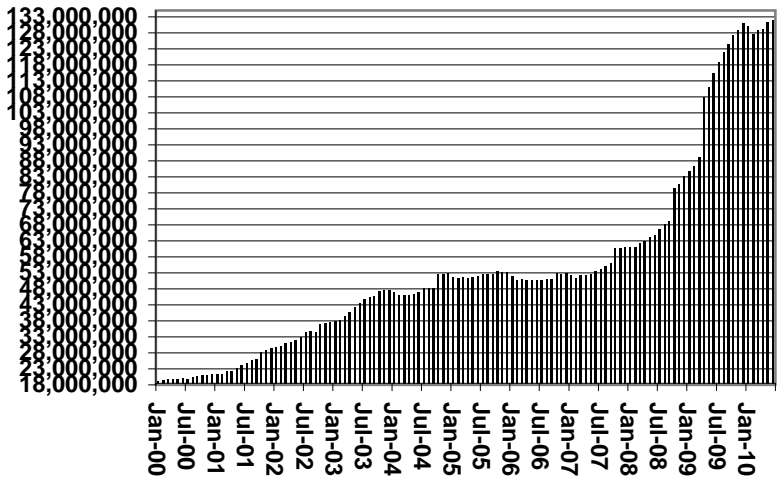
Households



Recipients



Payments



Average Payment Per Household

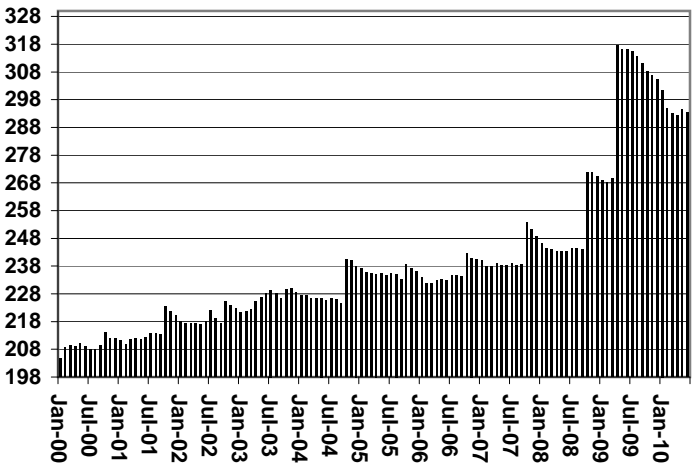


TABLE 7A
MEDICAL ASSISTANCE PROGRAM

RECIPIENTS

JUNE 2010

	SOBRA WOMAN 133% FPL	SOBRA CHILD	ADULT W/O CHILD 100% FPL	FOSTER CARE	1931 36% FPL	FEDERAL EMERGENCY SERVICES	INFANTS	ADULT W/O CHILD 40% FPL	MEDICAL W/SPEND DOWN	SOBRA WOMAN 100% FPL	SOBRA CHILD 100% FPL	TRANSITIONAL MEDICAL T1 - T4	1931 100% FPL	YATI	OTHER	TOTAL CASES
ARIZONA	10,393	67,450	60,939	12,020	333,829	61,180	48,845	163,308	7,235	3,879	227,797	44,754	120,670	350	27,290	1,189,939
DISTRICT I																
MARICOPA	5,637	37,813	29,766	6,262	186,281	48,261	29,560	83,457	4,023	1,981	133,883	24,048	62,455	203	14,102	667,732
DISTRICT II																
PIMA	1,504	10,170	11,262	3,301	48,348	5,999	6,623	28,754	830	619	32,900	6,866	19,917	96	4,614	181,803
DISTRICT III																
APACHE	195	1,573	1,046	42	11,181	115	979	5,467	154	92	4,383	876	2,783	1	384	29,271
COCONINO	285	1,393	1,570	126	8,463	383	1,095	4,627	164	117	4,878	1,139	2,950	6	409	27,605
NAVAJO	305	2,369	1,772	148	12,438	291	1,353	6,590	206	141	5,783	1,298	3,890	5	553	37,142
YAVAPAI	393	1,845	2,682	454	7,465	1,346	1,239	5,018	325	116	6,232	1,649	3,963	14	1,227	33,968
DISTRICT IV																
LA PAZ	41	237	274	17	1,223	137	140	808	23	13	731	160	450	0	151	4,405
MOHAVE	388	2,271	3,070	319	11,434	597	1,540	7,707	493	190	8,423	1,841	5,215	3	1,529	45,020
YUMA	570	2,639	2,907	304	11,831	1,567	1,889	4,711	289	232	9,987	2,350	6,567	4	1,275	47,122
DISTRICT V																
GILA	127	691	776	100	4,401	128	534	2,618	107	48	1,941	417	1,280	1	349	13,518
PINAL	538	4,004	2,726	594	17,589	1,290	2,147	7,863	386	172	9,871	2,043	5,613	10	1,209	56,055
DISTRICT VI																
COCHISE	196	1,252	1,669	242	6,828	481	857	3,125	140	70	4,152	969	2,681	3	844	23,509
GRAHAM	102	499	505	74	2,595	49	374	1,345	43	36	1,456	380	917	1	137	8,513
GREENLEE	17	60	67	8	446	6	53	180	6	5	238	72	132	2	45	1,337
SANTA CRUZ	95	634	847	29	3,306	530	462	1,038	46	47	2,939	646	1,857	1	462	12,939

TABLE 7B
MEDICAL ASSISTANCE PROGRAM
RECIPIENTS

CHANGE FROM

MAY 2010

	SOBRA WOMAN 133% FPL	SOBRA CHILD	ADULT W/O CHILD 100% FPL	FOSTER CARE	1931 36% FPL	FEDERAL EMERGENCY SERVICES	INFANTS	ADULT W/O CHILD 40% FPL	MEDICAL W/SPEND DOWN	SOBRA WOMAN 100% FPL	SOBRA CHILD 100% FPL	TRANSITIONAL MEDICAL T1 - T4	1931 100% FPL	YATI	OTHER	TOTAL CASES
ARIZONA	138	2,972	1,507	57	(1,452)	(2,679)	(402)	1,458	182	46	162	(709)	570	6	244	2,100
DISTRICT I																
MARICOPA	70	1,279	806	65	(556)	(2,063)	(132)	1,037	186	14	(80)	351	276	(6)	213	1,460
DISTRICT II																
PIMA	25	515	260	(4)	(228)	(381)	(74)	397	(6)	22	34	(26)	118	15	44	711
DISTRICT III																
APACHE	5	142	39	(2)	53	0	10	43	(12)	14	(87)	7	(116)	0	(2)	94
COCONINO	(17)	22	(2)	(1)	(75)	(8)	(17)	(52)	14	2	5	47	39	(1)	8	(36)
NAVAJO	(7)	140	37	1	(149)	(40)	(37)	(8)	9	5	51	(56)	13	0	(18)	(59)
YAVAPAI	8	81	62	16	(101)	(52)	(20)	(22)	(1)	(10)	18	102	(9)	0	26	98
DISTRICT IV																
LA PAZ	5	8	(2)	0	(6)	(2)	(3)	27	(2)	0	(7)	(33)	15	0	2	2
MOHAVE	7	133	45	(5)	(80)	(35)	(12)	93	(37)	(1)	(35)	(22)	(26)	(1)	1	25
YUMA	2	276	135	(6)	37	9	(26)	64	7	23	419	(1,036)	440	(1)	28	371
DISTRICT V																
GILA	19	110	53	(5)	(178)	(100)	(73)	(107)	32	(19)	(62)	(80)	(71)	0	(83)	(564)
PINAL	1	26	16	1	(1)	(10)	(17)	5	(3)	(9)	(28)	(12)	(32)	(1)	11	(53)
	18	84	37	(6)	(177)	(90)	(56)	(112)	35	(10)	(34)	(68)	(39)	1	(94)	(511)
DISTRICT VI																
COCHISE	21	266	74	(2)	(169)	(7)	(18)	(14)	(8)	(4)	(94)	37	(109)	0	25	(2)
GRAHAM	12	117	18	(3)	(95)	(11)	(25)	10	(2)	(5)	(24)	(9)	(50)	0	5	(62)
GREENLEE	8	50	43	1	(14)	(3)	6	(19)	(3)	3	2	18	(29)	0	(10)	53
SANTA CRUZ	6	10	(3)	0	43	0	(2)	3	(5)	1	(30)	4	(30)	0	7	4
	(5)	89	16	0	(103)	7	3	(8)	2	(3)	(42)	24	0	0	23	3

TABLE 7C
MEDICAL ASSISTANCE PROGRAM
RECIPIENTS

CHANGE FROM

JUNE 2009

	SOBRA WOMAN 133% FPL	SOBRA CHILD	ADULT W/O CHILD 100% FPL	FOSTER CARE	1931 36% FPL	FEDERAL EMERGENCY SERVICES	INFANTS	ADULT W/O CHILD 40% FPL	MEDICAL W/SPEND DOWN	SOBRA WOMAN 100% FPL	SOBRA CHILD 100% FPL	TRANSITIONAL MEDICAL T1 - T4	3E 1931 100% FPL	YATI	OTHER	TOTAL CASES
ARIZONA	(493)	1,881	13,193	544	9,841	(28,961)	270	36,732	1,099	(38)	23,517	8,799	16,923	66	2,317	85,690
DISTRICT I																
MARICOPA	25	910	7,855	445	7,201	(22,407)	808	22,095	516	26	16,673	5,688	11,462	41	1,618	52,956
DISTRICT II																
PIMA	(218)	164	2,392	60	406	(4,444)	(268)	6,314	80	59	2,968	1,093	2,581	25	257	11,469
DISTRICT III																
APACHE	(13)	201	13	(1)	77	(3)	(26)	1,044	65	(6)	144	168	155	(1)	27	1,844
COCONINO	(18)	4	301	(16)	314	(187)	(43)	918	35	(3)	372	238	316	(2)	50	2,279
NAVAJO	(28)	69	223	16	(36)	(81)	(36)	961	17	(23)	287	165	190	3	(4)	1,723
YAVAPAI	(27)	66	482	0	392	(324)	(50)	799	54	(25)	713	436	397	3	133	3,049
DISTRICT IV																
LA PAZ	6	16	35	5	(30)	(40)	(22)	91	1	(3)	57	31	99	0	(1)	245
MOHAVE	(79)	84	531	40	356	(286)	(6)	1,259	68	(1)	683	158	469	2	112	3,390
YUMA	(1)	59	400	28	579	(332)	8	975	76	24	512	(37)	566	0	16	2,873
DISTRICT V																
GILA	(17)	(28)	132	10	48	(39)	3	304	15	5	9	74	(28)	1	31	520
PINAL	(23)	239	493	(20)	290	(536)	(14)	1,154	149	(42)	615	409	485	(6)	(22)	3,171
DISTRICT VI																
COCHISE	(72)	28	203	(20)	176	(195)	(17)	384	32	(35)	293	100	82	(4)	61	1,016
GRAHAM	(17)	5	34	(2)	46	(13)	(44)	240	(2)	(8)	89	111	(7)	1	(9)	424
GREENLEE	(5)	(7)	8	2	(16)	(2)	(6)	18	0	(1)	38	46	23	2	24	124
SANTA CRUZ	(6)	71	91	(3)	38	(72)	(17)	176	(7)	(5)	64	119	133	1	24	607

CHART 7

MEDICAL ASSISTANCE PROGRAM

COMPARISON OF RECIPIENTS

FOR 1999, 2000, 2001, 2002, 2003, 2004, 2005, 2006, 2007, 2008, 2009, & 2010

Total Recipients

