



DEPARTMENT OF ECONOMIC SECURITY

Your Partner For A Stronger Arizona

State of Arizona

Department of Economic Security

Family Assistance Administration

Statistical Bulletin

June, 2009

Phone: (602) 542-3678

<http://www.azdes.gov/faa/Statistics.asp>

**** STATISTICAL BULLETIN ****
ARIZONA DEPARTMENT OF ECONOMIC SECURITY
FAMILY ASSISTANCE ADMINISTRATION
BOX 6123, PHOENIX, ARIZONA 85005
PHONE (602) 542-3678

JUNE 2009

THIS ISSUE OF THE STATISTICAL BULLETIN COMPARES JUNE 2009 DATA FOR EACH OF THE INDICATED PROGRAMS WITH THE INFORMATION FOR MAY 2009 AND JUNE 2008. STATEWIDE SUMMARIES OF ACTIVITY WITHIN EACH OF THE SPECIFIC PROGRAMS FOR THIS REPORT PERIOD ARE DISCUSSED BELOW. THE TABLES COMPARE CURRENT AND PRIOR MONTH DATA. DISTRICT AND COUNTY COMPARISONS ARE PROVIDED WITHIN THIS BULLETIN

TANF SUMMARY

COMPARING TO MAY 2009, JUNE 2009 CASES DECREASED BY 402 (1.04%) TO 38,293. RECIPIENTS DECREASED BY 804 (0.95%) TO 83,864. PAYMENTS DECREASED BY \$80,413 (0.97%) TO \$8,198,906. AVERAGE PAYMENT PER CASE INCREASED BY \$0.15 (0.07%) TO \$214.11. PAYMENT PER RECIPIENT DECREASED BY \$0.03 (0.03%) TO \$97.76.

COMPARING TO JUNE 2008, JUNE 2009 CASES INCREASED BY 2,193 (6.07%). RECIPIENTS INCREASED BY 6,288 (8.11%). TOTAL PAYMENTS DECREASED BY \$1,296,922 (13.66%). THE AVERAGE PAYMENT PER CASE DECREASED BY \$48.93 (18.60%). THE AVERAGE PAYMENT PER RECIPIENT DECREASED BY \$24.65 (20.14%).

CASH ASSISTANCE (CA)

COMPARING TO MAY 2009, JUNE 2009 CASES DECREASED BY 373 (1.03%) TO 35,834. RECIPIENTS DECREASED BY 652 (0.84%) TO 76,822. PAYMENTS DECREASED BY \$71,713 (0.92%) TO \$7,733,967. AVERAGE PAYMENT PER CASE INCREASED BY \$0.25 (0.12%) TO \$215.83. PAYMENT PER RECIPIENT DECREASED BY \$0.08 (0.08%) TO \$100.67.

COMPARING TO JUNE 2008, JUNE 2009 CASES INCREASED BY 1,217 (3.52%). RECIPIENTS INCREASED BY 3,505 (4.78%). TOTAL PAYMENTS DECREASED BY \$1,434,872 (15.65%). THE AVERAGE PAYMENT PER CASE DECREASED BY \$49.04 (18.52%). THE AVERAGE PAYMENT PER RECIPIENT DECREASED BY \$24.39 (19.50%).

CASH ASSISTANCE UNEMPLOYED PARENT PROGRAM (CA-UP)

COMPARING TO MAY 2009, JUNE 2009 CASES DECREASED BY 18 (1.25%) TO 1,426. RECIPIENTS DECREASED BY 128 (2.53%) TO 4,932. PAYMENTS DECREASED BY \$9,703 (2.40%) TO \$394,766. AVERAGE PAYMENT PER CASE DECREASED BY \$3.27 (1.17%) TO \$276.83. PAYMENT PER RECIPIENT INCREASED BY \$0.11 (0.13%) TO \$80.04.

COMPARING TO JUNE 2008, JUNE 2009 CASES INCREASED BY 615 (75.83%). RECIPIENTS INCREASED BY 2,012 (68.90%). TOTAL PAYMENTS INCREASED BY \$115,533 (41.38%). THE AVERAGE PAYMENT PER CASE DECREASED BY \$67.48 (19.60%). THE AVERAGE PAYMENT PER RECIPIENT DECREASED BY \$15.59 (16.30%).

CASH ASSISTANCE WITH GRANT UNDER \$100 (CA-MOE)

COMPARING TO MAY 2009, JUNE 2009 CASES INCREASED BY 331 (50.08%) TO 992. RECIPIENTS INCREASED BY 687 (52.76%) TO 1,989. PAYMENTS INCREASED BY \$20,875 (44.31%) TO \$67,983. AVERAGE PAYMENT PER CASE DECREASED BY \$2.74 (3.84%) TO \$68.53. AVERAGE PAYMENT PER RECIPIENT DECREASED BY \$2.00 (5.53%) TO \$34.18.

COMPARING TO JUNE 2008, JUNE 2009 CASES INCREASED BY 0 (0.00%). RECIPIENTS INCREASED BY 0 (0.00%). TOTAL PAYMENTS INCREASED BY \$0 (0.00%). THE AVERAGE PAYMENT PER CASE INCREASED BY \$0.00 (0.00%). THE AVERAGE PAYMENT PER RECIPIENT INCREASED BY \$0.00 (0.00%).

CASH ASSISTANCE UNEMPLOYED PARENT PROGRAM WITH GRANT UNDER \$100 (CA-UP-MOE) NEW PROGRAM STARTING 7/01

COMPARING TO MAY 2009, JUNE 2009 CASES INCREASED BY 30 (272.73%) TO 41. RECIPIENTS INCREASED BY 84 (4.02%) TO 121. PAYMENTS INCREASED BY \$1,542 (237.96%) TO \$2,190. AVERAGE PAYMENT PER CASE DECREASED BY \$5.50 (9.34%) TO \$53.41. PAYMENT PER RECIPIENT INCREASED BY \$0.59 (3.37%) TO \$18.10.

COMPARING TO JUNE 2008, JUNE 2009 CASES INCREASED BY 0 (0.00%). RECIPIENTS INCREASED BY 0 (0.00%). TOTAL PAYMENTS INCREASED BY \$0 (0.00%). THE AVERAGE PAYMENT PER CASE INCREASED BY \$0.00 (0.00%). THE AVERAGE PAYMENT PER RECIPIENT INCREASED BY \$0.00 (0.00%).

TUBERCULOSIS CONTROL PROGRAM (TC)

COMPARING TO MAY 2009, JUNE 2009 CASES DECREASED BY 1 (33.33%) TO 2. RECIPIENTS DECREASED BY 1 (33.33%) TO 2. PAYMENTS DECREASED BY \$110 (28.13%) TO \$281. AVERAGE PAYMENT PER CASE INCREASED BY \$83.78 (64.28%) TO \$214.11. AVERAGE PAYMENT PER RECIPIENT INCREASED BY \$10.17 (7.80%) TO \$140.50.

COMPARING TO JUNE 2008, JUNE 2009 CASES DECREASED BY 5 (71.43%). RECIPIENTS DECREASED BY 5 (71.43%). TOTAL PAYMENTS DECREASED BY \$540 (65.77%). THE AVERAGE PAYMENT PER CASE INCREASED BY \$96.82 (82.55%). THE AVERAGE PAYMENT PER RECIPIENT INCREASED BY \$23.21 (19.79%).

SUPPLEMENTAL NUTRITION ASSISTANCE PROGRAM (SNAP)

COMPARING TO MAY 2009, JUNE 2009 SUPPLEMENTAL NUTRITION ASSISTANCE HOUSEHOLDS INCREASED BY 13,416 (3.82%) TO 364,924. PERSONS RECEIVING SUPPLEMENTAL NUTRITION ASSISTANCE INCREASED BY 28,119 (3.35%) TO 867,997. TOTAL COUPON ISSUANCE INCREASED BY \$4,227,137 (3.80%) TO \$115,415,414. THE AVERAGE HOUSEHOLD ALLOTMENT DECREASED BY \$0.05 (0.02%) TO \$316.27. THE AVERAGE ALLOTMENT PER PERSON INCREASED BY \$0.58 (0.44%) TO \$132.97.

COMPARING TO JUNE 2008, JUNE 2009 SUPPLEMENTAL NUTRITION ASSISTANCE HOUSEHOLDS INCREASED BY 98,253 (36.84%). PERSONS RECEIVING SUPPLEMENTAL NUTRITION ASSISTANCE INCREASED BY 222,198 (34.41%). TOTAL COUPON ISSUANCE INCREASED BY \$50,534,253 (77.89%). THE AVERAGE ALLOTMENT PER HOUSEHOLD INCREASED BY \$72.97 (29.99%). THE AVERAGE ALLOTMENT PER PERSON INCREASED BY \$32.50 (32.35%).

MEDICAL ASSISTANCE PROGRAM (MA) NEW TABLE INCLUDES PROP. 204 CATEGORIES

COMPARING TO MAY 2009, JUNE 2009 TOTAL RECIPIENTS TOTAL RECIPIENTS INCREASED BY 0 (0.00%). SOBRA WOMEN AT 140% FPL INCREASED BY 0 (0.00%). SOBRA CHILDREN INCREASED BY 0 (0.00%). ADULTS W/O CHILD AT 100% INCREASED BY 0 (0.00%). FOSTER CARE INCREASED BY 0 (0.00%). 1931 AT 36% FPL INCREASED BY 0 (0.00%). EMERGENCY SERVICES INCREASED BY 0 (0.00%). INFANTS INCREASED BY 0 (0.00%). ADULT W/O CHILD AT 140% INCREASED BY 0 (0.00%). MEDICAL W/SPEND DOWN INCREASED BY 0 (0.00%). SOBRA WOMAN AT 100% INCREASED BY 0 (0.00%). SOBRA CHILD AT 100% INCREASED BY 0 (0.00%). TRANSITIONAL MEDICAL INCREASED BY 0 (0.00%). 1931 AT 100% INCREASED BY 0 (0.00%). YATI INCREASED BY 0 (0.00%). ALL OTHER CATEGORIES INCREASED BY 0 (0.00%).

COMPARING TO JUNE 2008, JUNE 2009 TOTAL RECIPIENTS TOTAL RECIPIENTS INCREASED BY 0 (0.00%). SOBRA WOMEN AT 140% FPL INCREASED BY 0 (0.00%). SOBRA CHILDREN INCREASED BY 0 (0.00%). ADULTS W/O CHILD AT 100% INCREASED BY 0 (0.00%). FOSTER CARE INCREASED BY 0 (0.00%). 1931 AT 36% FPL INCREASED BY 0 (0.00%). EMERGENCY SERVICES INCREASED BY 0 (0.00%). INFANTS INCREASED BY 0 (0.00%). ADULT W/O CHILD AT 140% INCREASED BY 0 (0.00%). MEDICAL W/SPEND DOWN INCREASED BY 0 (0.00%). SOBRA WOMAN AT 100% INCREASED BY 0 (0.00%). SOBRA CHILD AT 100% INCREASED BY 0 (0.00%). TRANSITIONAL MEDICAL INCREASED BY 0 (0.00%). 1931 AT 100% INCREASED BY 0 (0.00%). YATI INCREASED BY 0 (0.00%). ALL OTHER CATEGORIES INCREASED BY 0 (0.00%).

TANF SUMMARY

TABLES 1, 1A, 1B, & 1C: ARIZONA 1

	JUNE 2009							MAY 2009			CHANGE FROM JUNE 2008		
	FAMILIES (CASES)	PERSONS (RECIP.)	ADULTS	CHILDREN	TOTAL PAYMENTS	AVERAGE PAYMENT/ CASE	AVERAGE PAYMENT/ RECIP.	FAMILIES (CASES)	PERSONS (RECIP.)	TOTAL PAYMENTS	FAMILIES (CASES)	PERSONS (RECIP.)	TOTAL PAYMENTS
	ARIZONA	38,293	83,864	20,714	63,150	8,198,906	214.11	97.76	(402)	(804)	(80,413)	2,193	6,288
DISTRICT I													
MARICOPA	22,939	50,988	11,817	39,171	4,886,919	213.04	95.84	(164)	(397)	(26,555)	2,556	6,521	(529,994)
DISTRICT II													
PIMA	6,448	13,327	3,496	9,831	1,352,700	209.79	101.50	(82)	(159)	(15,314)	(139)	(213)	(353,943)
DISTRICT III													
APACHE	2	4	1	3	440	220.00	110.00	(4)	(7)	(662)	(98)	(181)	(24,112)
COCONINO	214	455	113	342	42,216	197.27	92.78	(18)	(29)	(3,592)	(28)	(42)	(16,885)
NAVAJO	1,450	3,681	1,125	2,556	389,748	268.79	105.88	1	37	1,354	155	473	29,977
YAVAPAI	709	1,374	320	1,054	134,645	189.91	97.99	(46)	(100)	(10,677)	13	10	(34,828)
DISTRICT IV													
LA PAZ	180	383	121	262	35,983	199.91	93.95	2	4	635	(39)	(77)	(18,998)
MOHAVE	1,217	2,549	735	1,814	250,431	205.78	98.25	(49)	(93)	(12,026)	(135)	(283)	(98,086)
YUMA	987	2,132	472	1,660	207,116	209.84	97.15	13	46	3,564	(108)	(242)	(80,226)
DISTRICT V													
GILA	694	1,481	534	947	168,184	242.34	113.56	(14)	(37)	(5,740)	22	134	(4,078)
PINAL	1,974	4,469	1,190	3,279	416,526	211.01	93.20	16	51	1,405	138	402	(68,164)
DISTRICT VI													
COCHISE	872	1,773	456	1,317	182,417	209.19	102.89	(12)	(4)	(2,917)	(114)	(168)	(67,592)
GRAHAM	305	600	191	409	67,138	220.12	111.90	(23)	(62)	(6,158)	(39)	(61)	(18,046)
GREENLEE	37	78	20	58	7,882	213.03	101.05	(11)	(23)	(2,264)	4	14	172
SANTA CRUZ	265	570	123	447	56,561	213.44	99.23	(11)	(31)	(1,466)	5	1	(12,119)

1/EXCLUDES: PRIOR MONTH NET TOTALS OF 1,933 CASES; 4,691 RECIPIENTS; \$357,758.
 1/GRANT DIVERSION TOTALS OF: 198 CASES; \$169,102.
 ZERO PAY TOTALS OF 1,014 CASES; 2,797 RECIPIENTS.

RRP TOTALS OF: 522 CASES; 918 RECIPIENTS; \$117,774.

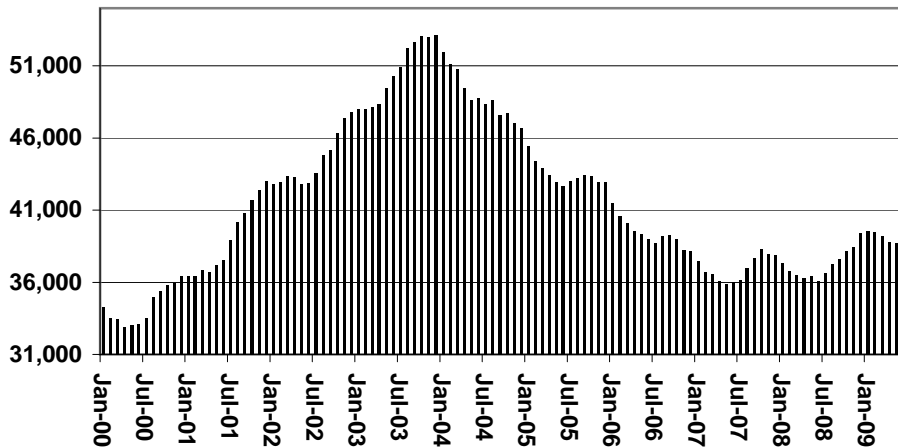
	CURRENT MO. CASES	CURRENT MO. RECIP.	CURRENT MO. DOLLARS	PRIOR MO. CASES	PRIOR MO. RECIP.	PRIOR MO. DOLLARS
PASQUA/YAQUI	342	1,003	\$105,895	23	73	\$7,107
WM APACHE	761	2,173	\$238,045	16	50	\$2,059
SALT RIVER	58	195	\$18,549	6	17	\$920
SAN CARLOS	640	1,405	\$165,683	19	50	\$4,272
HOPAI	103	283	\$22,288	3	8	\$359
TOTAL	1,904	5,059	\$550,460	67	198	\$14,717

TANF SUMMARY

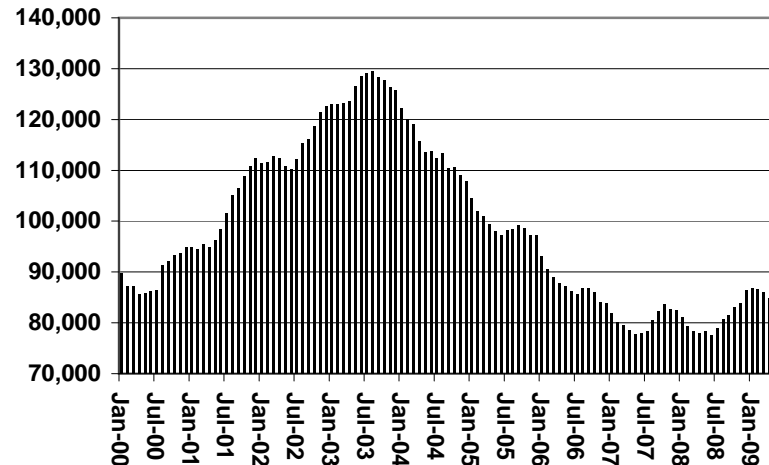
TABLES 1, 1A, 1B, & 1C

COMPARISON OF CASES, RECIPIENTS, PAYMENTS & AVERAGE PAYMENTS
FOR 2000, 2001, 2002, 2003, 2004, 2005, 2006, 2007, 2008, & 2009

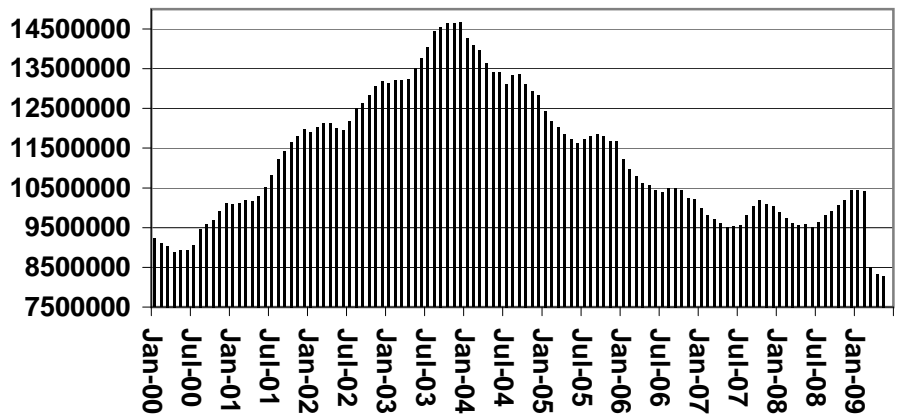
Cases



Recipients



Payments



Average Payments Per Recipient

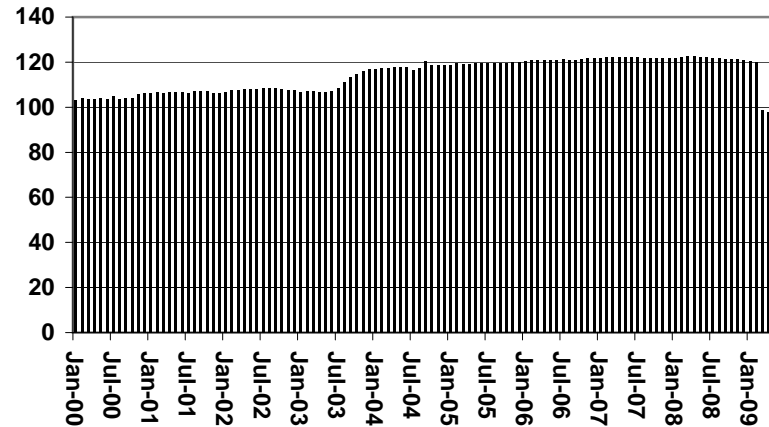


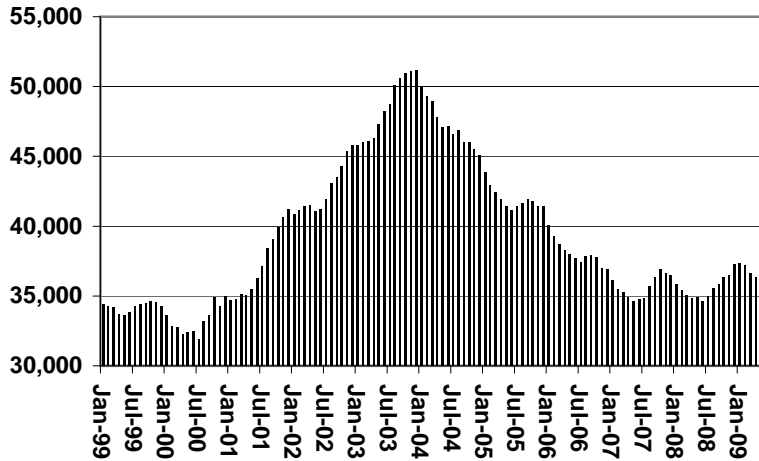
CHART 1

CASH ASSISTANCE PROGRAM

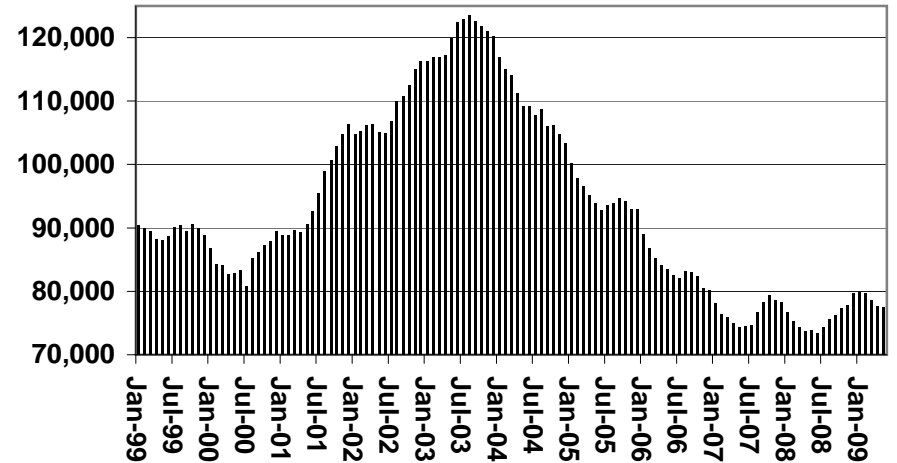
COMPARISON OF CASES, RECIPIENTS, PAYMENTS & AVERAGE PAYMENTS

FOR 1999, 2000, 2001, 2002, 2003, 2004, 2005, 2006, 2007, 2008, & 2009

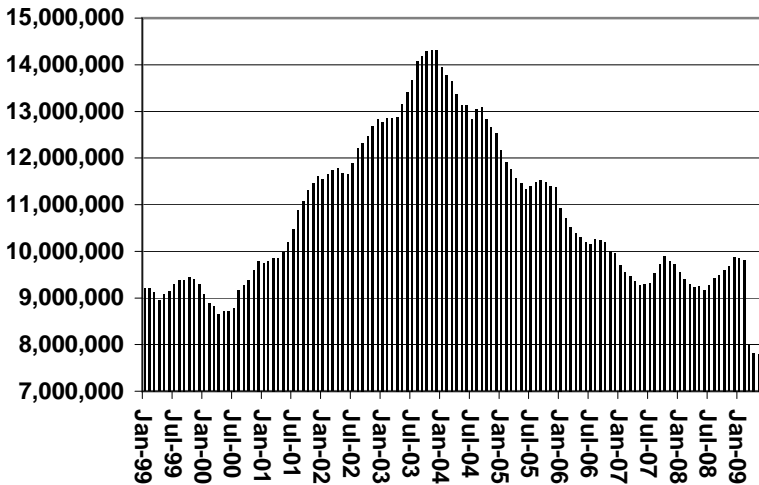
Cases



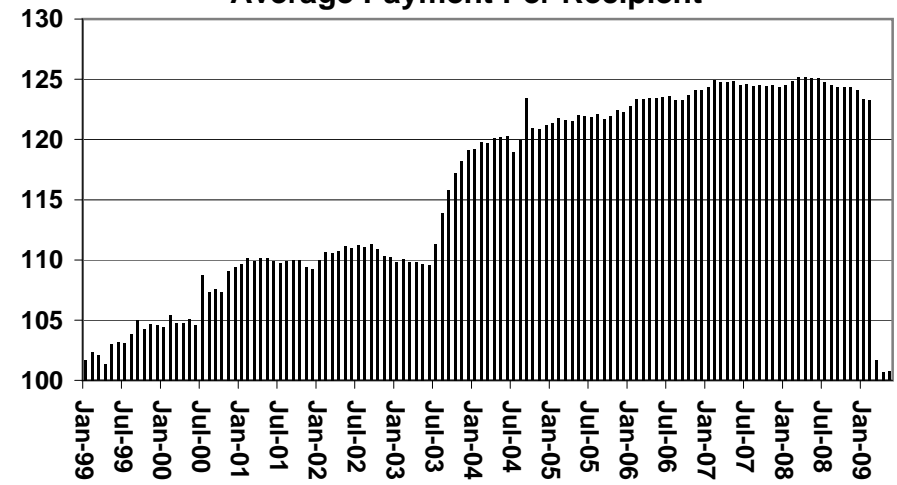
Recipients



Payments



Average Payment Per Recipient



**TABLE 1A
CA-UP**

CASH ASSISTANCE UNEMPLOYED PARENT PROGRAM: ARIZONA 1

	JUNE 2009							CHANGE FROM			MAY 2009			JUNE 2008		
	FAMILIES (CASES)	PERSONS (RECIP.)	ADULTS	CHILDREN	TOTAL PAYMENTS	AVERAGE PAYMENT/ CASE	AVERAGE PAYMENT/ RECIP.	FAMILIES (CASES)	PERSONS (RECIP.)	TOTAL PAYMENTS	FAMILIES (CASES)	PERSONS (RECIP.)	TOTAL PAYMENTS			
ARIZONA	1,426	4,932	1,863	3,069	394,766	276.83	80.04	(18)	(128)	(9,703)	615	2,012	115,533			
DISTRICT I																
MARICOPA	899	2,977	986	1,991	243,310	270.65	81.73	8	(24)	(1,249)	513	1,678	115,279			
DISTRICT II																
PIMA	254	927	409	518	73,922	291.03	79.74	(9)	(33)	(1,723)	122	409	26,400			
DISTRICT III																
APACHE	0	0	0	0	0	0.00	0.00	0	0	0	(4)	(16)	(1,327)			
COCONINO	2	7	2	5	555	277.50	79.29	(4)	(17)	(1,451)	(3)	(8)	(1,077)			
NAVAJO	23	87	42	45	6,742	293.13	77.49	(10)	(33)	(3,481)	(68)	(287)	(28,337)			
YAVAPAI	11	33	16	17	2,946	267.82	89.27	(8)	(29)	(1,774)	(2)	(10)	(994)			
DISTRICT IV																
LA PAZ	7	28	12	16	1,916	273.71	68.43	3	12	999	(4)	(13)	(1,749)			
MOHAVE	39	150	76	74	11,708	300.21	78.05	(6)	(17)	(2,184)	5	8	(2,068)			
YUMA	29	95	46	49	7,889	272.03	83.04	5	13	871	4	5	(676)			
DISTRICT V																
GILA	4	14	7	7	1,080	270.00	77.14	(3)	(12)	(574)	(15)	(45)	(5,114)			
PINAL	115	460	200	260	32,279	280.69	70.17	6	8	808	49	219	10,652			
DISTRICT VI																
COCHISE	28	101	42	59	8,300	296.43	82.18	(2)	(4)	(425)	13	51	3,508			
GRAHAM	10	31	18	13	2,517	251.70	81.19	1	2	106	2	4	56			
GREENLEE	0	0	0	0	0	0.00	0.00	0	0	0	0	0	0			
SANTA CRUZ	5	22	7	15	1,602	320.40	72.82	1	6	374	3	17	980			

1/EXCLUDES: PRIOR MONTH NET TOTALS OF: 156 CASES; 578 RECIPIENTS; \$51,365.
GRANT DIVERSION TOTALS OF: 0 CASES; \$0.
ZERO PAY TOTALS OF 69 CASES; 316 RECIPIENTS.

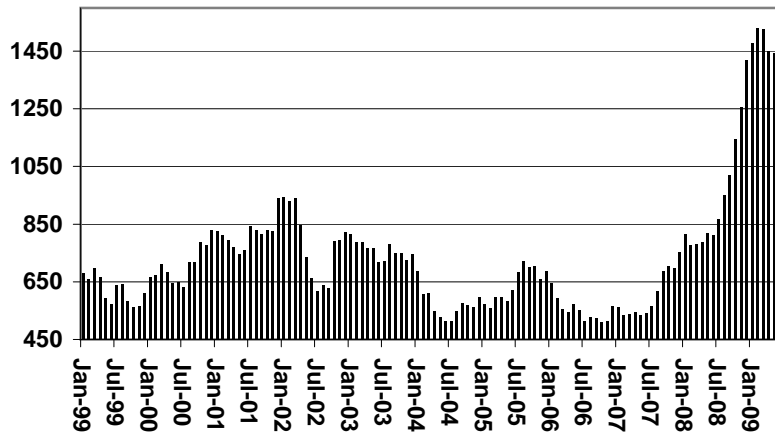
	CURRENT MO. CASES	CURRENT MO. RECIP.	CURRENT MO. DOLLARS	PRIOR MO. CASES	PRIOR MO. RECIP.	PRIOR MO. DOLLARS
PASQUAYUAQUI	28	120	10,863	5	22	1,789
WM APACHE	10	37	3,189	0	0	0
SALT RIVER	0	0	0	0	0	0
SAN CARLOS	1	4	168	0	0	0
HOPÍ	0	0	0	0	0	0
TOTAL	39	161	14,220	5	22	1,789

CASES WITH GRANT UNDER \$100 (SEE TABLE 1C).

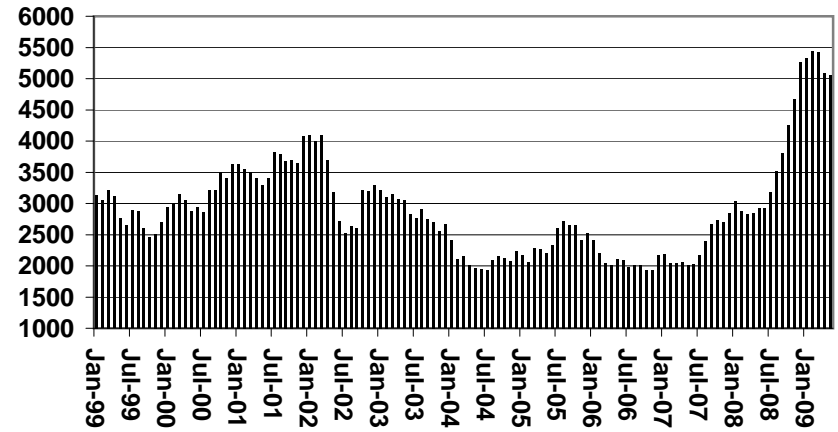
CHART 1A

CASH ASSISTANCE UNEMPLOYED PARENT PROGRAM COMPARISON OF CASES, RECIPIENTS, PAYMENTS & AVERAGE PAYMENTS FOR 1999, 2000, 2001, 2002, 2003, 2004, 2005, 2006, 2007, 2008, & 2009

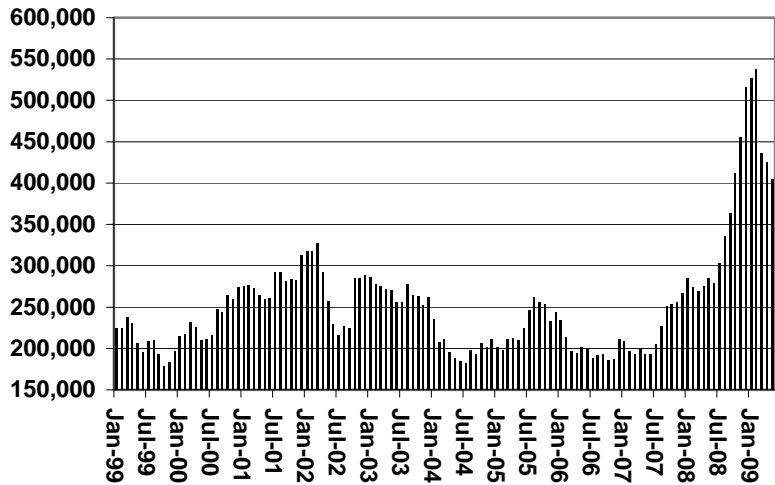
Cases



Recipients



Payments



Average Payment Per Recipient

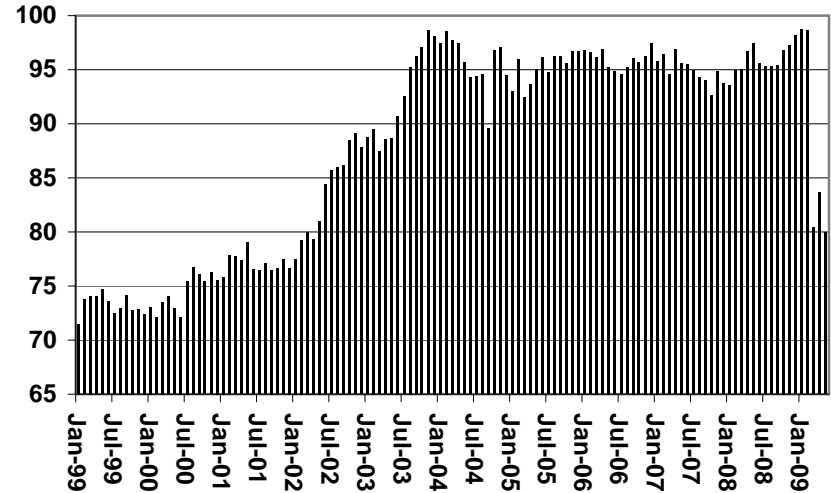


TABLE 1B 1/

**CASH ASSISTANCE: ARIZONA
CASES WITH GRANT UNDER \$100**

	JUNE 2009							CHANGE FROM					
								MAY 2009			JUNE 2008		
	FAMILIES (CASES)	PERSONS (RECIP.)	ADULTS	CHILDREN	TOTAL PAYMENTS	AVERAGE PAYMENT/ CASE	AVERAGE PAYMENT/ RECIP.	FAMILIES (CASES)	PERSONS (RECIP.)	TOTAL PAYMENTS	FAMILIES (CASES)	PERSONS (RECIP.)	TOTAL PAYMENTS
ARIZONA	992	1,989	530	1,459	67,983	68.53	34.18	(9)	(10)	905	331	687	20,875
DISTRICT I													
MARICOPA	621	1,278	308	970	40,576	65.34	31.75	(20)	(37)	(1,058)	281	609	16,801
DISTRICT II													
PIMA	150	286	88	198	11,319	75.46	39.58	19	38	1,894	21	39	1,802
DISTRICT III													
APACHE	0	0	0	0	0	0.00	0.00	0	0	0	(4)	(6)	(378)
COCONINO	6	10	6	4	592	98.67	59.20	(1)	(5)	252	(3)	(10)	(1)
NAVAJO	16	34	10	24	1,088	68.00	32.00	0	3	(144)	8	17	616
YAVAPAI	33	62	20	42	2,089	63.30	33.69	(5)	(6)	(273)	10	15	686
DISTRICT IV													
LA PAZ	7	12	6	6	402	57.43	33.50	2	3	104	(2)	(5)	(323)
MOHAVE	45	90	28	62	3,212	71.38	35.69	(1)	(1)	(262)	7	18	477
YUMA	20	42	12	30	1,790	89.50	42.62	0	1	164	0	1	320
DISTRICT V													
GILA	10	14	5	9	613	61.30	43.79	1	4	17	5	2	363
PINAL	41	81	23	58	3,157	77.00	38.98	(4)	(8)	156	8	12	168
DISTRICT VI													
COCHISE	33	62	18	44	2,223	67.36	35.85	6	12	266	7	8	456
GRAHAM	4	5	2	3	337	84.25	67.40	(5)	(10)	(321)	(6)	(13)	(199)
GREENLEE	1	2	1	1	103	103.00	51.50	0	0	56	(1)	(1)	3
SANTA CRUZ	5	11	3	8	482	96.40	43.82	(1)	(4)	54	0	1	84

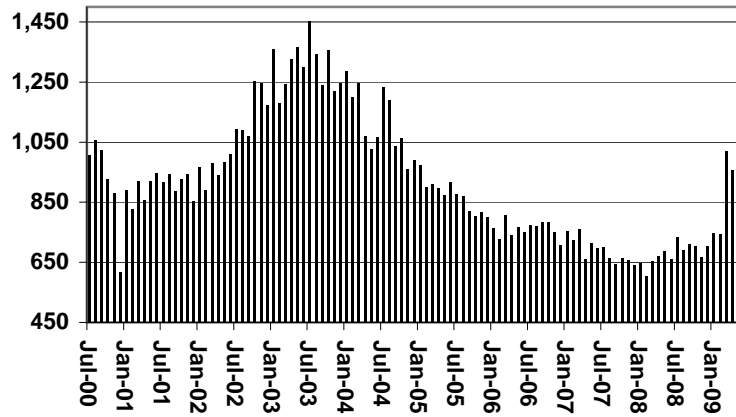
EXCLUDES: PRIOR MONTH NET TOTALS OF 764 CASES; 1,548 RECIPIENTS; \$49,642.

CHART 1B

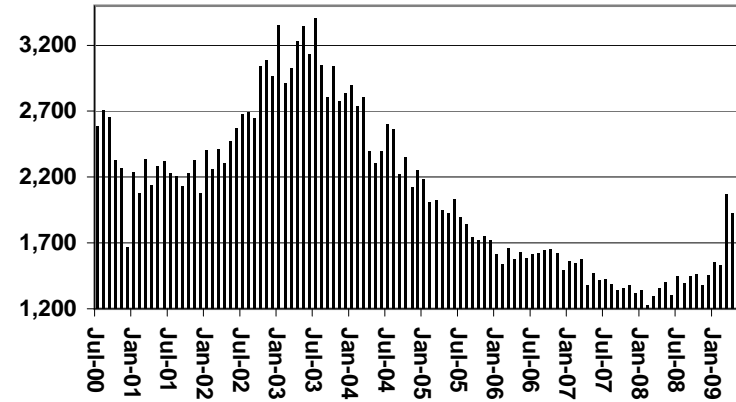
CASH ASSISTANCE PROGRAM CASES WITH GRANT UNDER \$100

FOR 1999, 2000, 2001, 2002, 2003, 2004, 2005, 2006, 2007, 2008, & 2009

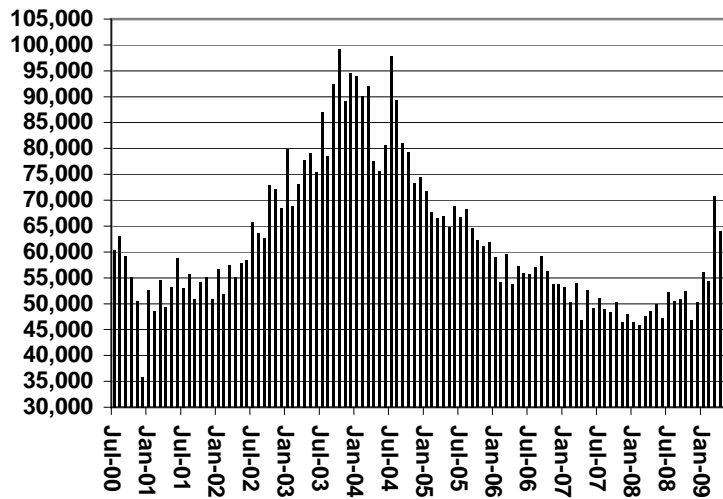
Cases



Recipients



Payments



Average Payment Per Recipient

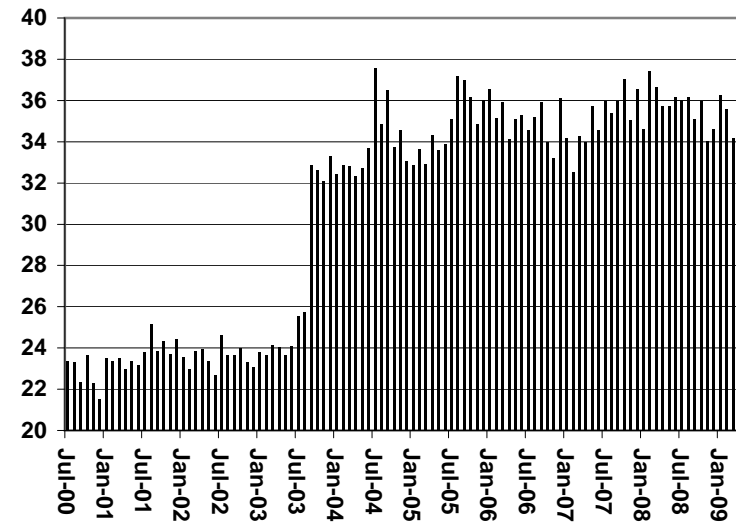


TABLE 1C 1/

CASH ASSISTANCE UNEMPLOYED PARENT PROGRAM: ARIZONA
 CASES WITH GRANT UNDER \$100

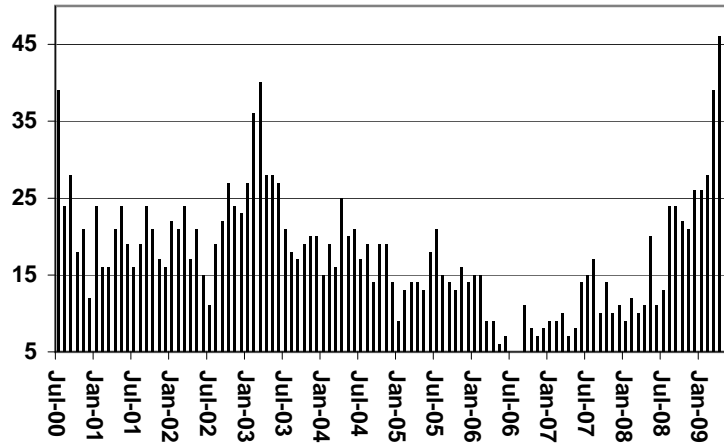
	JUNE 2009							CHANGE FROM					
								MAY 2009			JUNE 2008		
	FAMILIES (CASES)	PERSONS (RECIP.)	ADULTS	CHILDREN	TOTAL PAYMENTS	AVERAGE PAYMENT/ CASE	AVERAGE PAYMENT/ RECIP.	FAMILIES (CASES)	PERSONS (RECIP.)	TOTAL PAYMENTS	FAMILIES (CASES)	PERSONS (RECIP.)	TOTAL PAYMENTS
ARIZONA	41	121	33	88	2,190	53.41	18.10	(2)	(14)	98	30	84	1,542
DISTRICT I													
MARICOPA	33	96	22	74	1,712	51.88	17.83	(1)	(9)	85	26	71	1,317
DISTRICT II													
PIMA	3	7	3	4	153	51.00	21.86	(2)	(10)	(127)	1	1	42
DISTRICT III													
APACHE	0	0	0	0	0	0.00	0.00	0	0	0	0	0	0
COCONINO	0	0	0	0	0	0.00	0.00	0	0	0	0	0	0
NAVAJO	0	0	0	0	0	0.00	0.00	0	0	0	0	0	0
YAVAPAI	1	2	0	2	78	78.00	39.00	1	2	78	1	2	78
DISTRICT IV													
LA PAZ	0	0	0	0	0	0.00	0.00	0	0	0	0	0	0
MOHAVE	1	5	2	3	72	72.00	14.40	1	5	72	(1)	(1)	(70)
YUMA	1	5	2	3	80	80.00	16.00	0	0	0	1	5	80
DISTRICT V													
GILA	0	0	0	0	0	0.00	0.00	0	0	0	0	0	0
PINAL	1	3	2	1	44	44.00	14.67	(1)	(1)	(25)	1	3	44
DISTRICT VI													
COCHISE	0	0	0	0	0	0.00	0.00	0	0	0	0	0	0
GRAHAM	1	3	2	1	51	51.00	17.00	0	(1)	15	1	3	51
GREENLEE	0	0	0	0	0	0.00	0.00	0	0	0	0	0	0
SANTA CRUZ	0	0	0	0	0	0.00	0.00	0	0	0	0	0	0

EXCLUDES: PRIOR MONTH NET TOTALS OF 69 CASES; 221 RECIPIENTS; \$3,787.

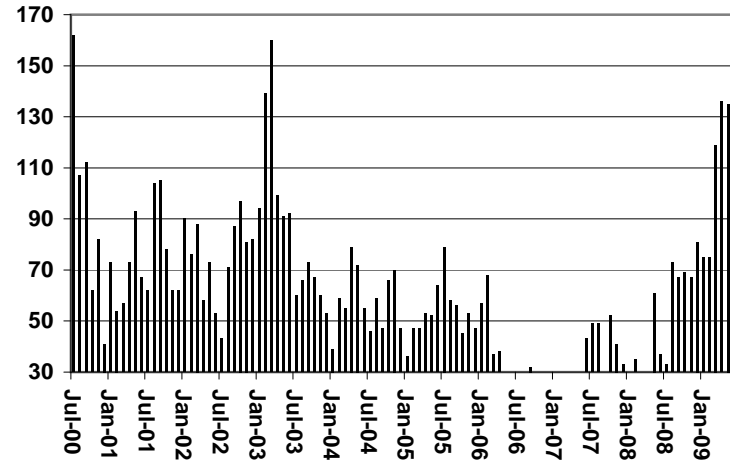
CHART 1C

CASH ASSISTANCE UNEMPLOYED PARENT PROGRAM CASES WITH GRANT UNDER \$100 FOR 1999, 2000, 2001, 2002, 2003, 2004, 2005, 2006, 2007, 2008, & 2009

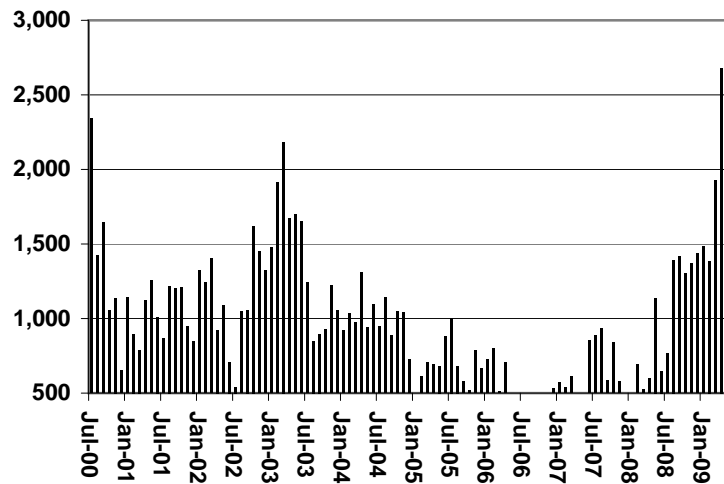
Cases



Recipients



Payments



Average Payment Per Recipient

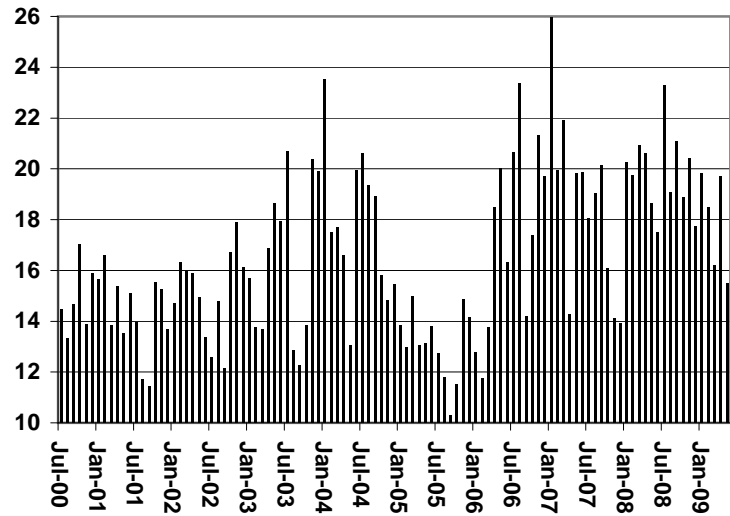


TABLE 4

TUBERCULOSIS CONTROL: ARIZONA 1/

	CHANGE FROM											
	JUNE 2009					MAY 2009			JUNE 2008			
	NUMBER OF CASES	PERSONS (RECIP.)	TOTAL PAYMENTS	AVERAGE PAYMENT/ CASE	AVERAGE PAYMENT/ RECIP.	NUMBER OF CASES	PERSONS (RECIP.)	TOTAL PAYMENTS	NUMBER OF CASES	PERSONS (RECIP.)	TOTAL PAYMENTS	
ARIZONA	2	2	281	140.50	140.50	(1)	(1)	(110)	(5)	(5)	(540)	
DISTRICT I												
MARICOPA	1	1	173	173.00	173.00	0	0	0	(5)	(5)	(540)	
DISTRICT II												
PIMA	0	0	0	0.00	0.00	0	0	0	0	0	0	
DISTRICT III	0	0	0	0.00	0.00	0	0	0	(1)	(1)	(108)	
APACHE	0	0	0	0.00	0.00	0	0	0	0	0	0	
COCONINO	0	0	0	0.00	0.00	0	0	0	0	0	0	
NAVAJO	0	0	0	0.00	0.00	0	0	0	0	0	0	
YAVAPAI	0	0	0	0.00	0.00	0	0	0	(1)	(1)	(108)	
DISTRICT IV	0	0	0	0.00	0.00	(1)	(1)	(173)	0	0	0	
LA PAZ	0	0	0	0.00	0.00	0	0	0	0	0	0	
MOHAVE	0	0	0	0.00	0.00	0	0	0	0	0	0	
YUMA	0	0	0	0.00	0.00	(1)	(1)	(173)	0	0	0	
DISTRICT V	0	0	0	0.00	0.00	0	0	0	0	0	0	
GILA	0	0	0	0.00	0.00	0	0	0	0	0	0	
PINAL	0	0	0	0.00	0.00	0	0	0	0	0	0	
DISTRICT VI	1	1	108	108.00	108.00	0	0	63	1	1	108	
COCHISE	1	1	108	108.00	108.00	0	0	63	1	1	108	
GRAHAM	0	0	0	0.00	0.00	0	0	0	0	0	0	
GREENLEE	0	0	0	0.00	0.00	0	0	0	0	0	0	
SANTA CRUZ	0	0	0	0.00	0.00	0	0	0	0	0	0	

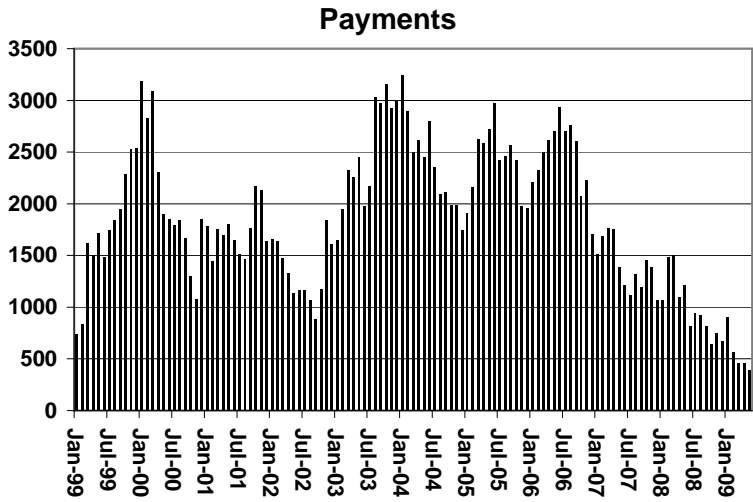
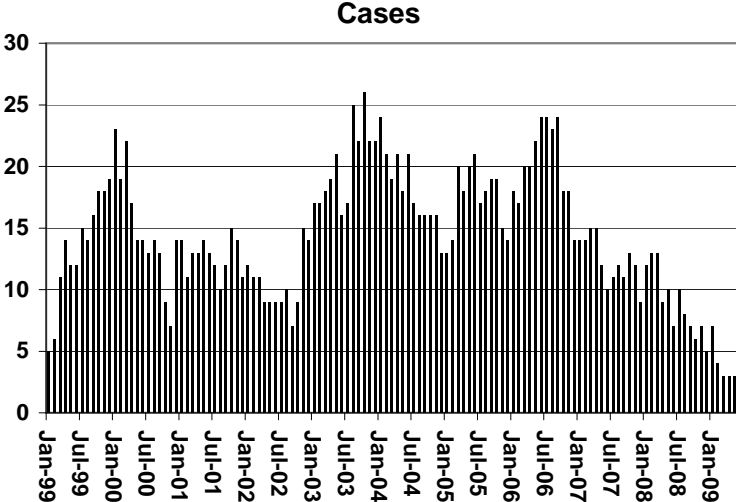
1/EXCLUDES: PRIOR MONTH NET TOTALS OF : 0 CASES; 0 RECIPIENTS; \$0.

CHART 4

TUBERCULOSIS CONTROL PROGRAM

COMPARISON OF CASES, PAYMENTS & AVERAGE PAYMENTS

FOR 1999, 2000, 2001, 2002, 2003, 2004, 2005, 2006, 2007, 2008, & 2009



Average Payment Per Case

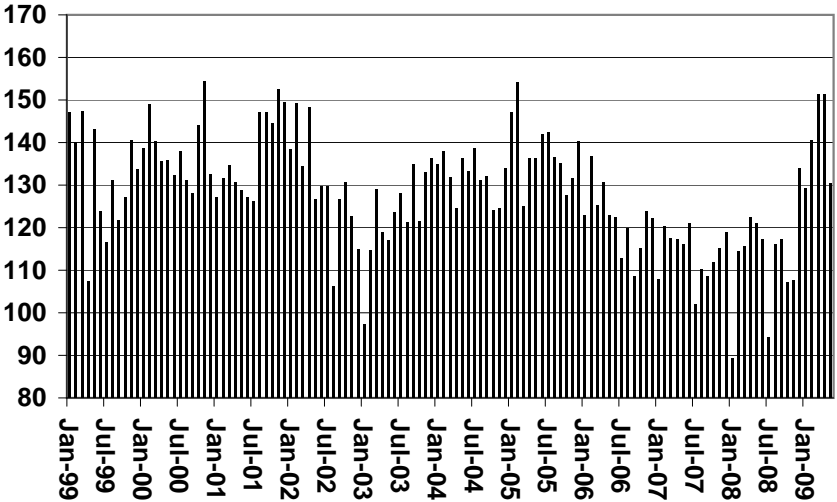


TABLE 6

SUPPLEMENTAL NUTRITION ASSISTANCE PROGRAM: ARIZONA 1

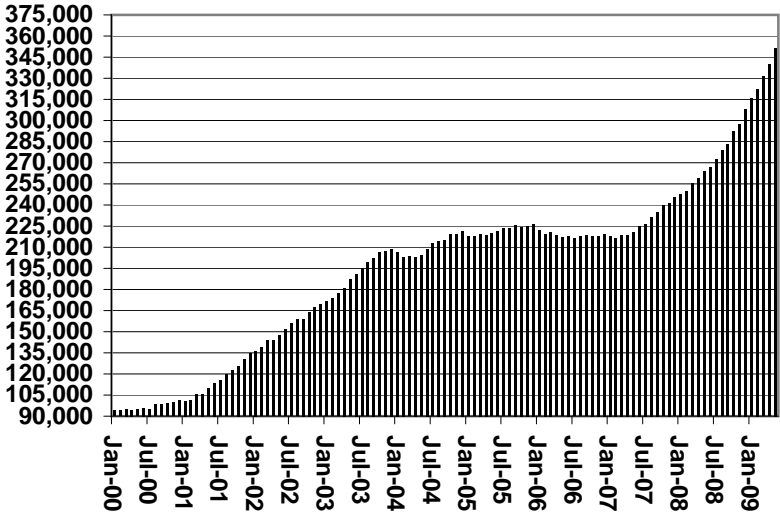
	CHANGE FROM										
	JUNE 2009					MAY 2009			JUNE 2008		
	HOUSEHOLDS	PERSONS	TOTAL COUPON ISSUANCE	AVERAGE ALLOT./ HOUSEHOLD	AVERAGE ALLOT./ PERSON	HOUSEHOLDS	PERSONS	TOTAL COUPON ISSUANCE	HOUSEHOLDS	PERSONS	TOTAL COUPON ISSUANCE
ARIZONA	364,924	867,997	115,415,414	316.27	132.97	13,416	28,119	4,227,137	98,253	222,198	50,534,253
DISTRICT I											
MARICOPA	193,186	460,644	62,403,195	323.02	135.47	7,727	15,980	2,426,457	58,616	132,877	28,810,188
DISTRICT II											
PIMA	62,785	138,953	18,626,474	296.67	134.05	2,600	4,759	748,283	15,153	31,096	7,773,919
DISTRICT III											
APACHE	6,339	19,623	2,453,260	387.01	125.02	198	597	82,609	(150)	(3)	521,486
COCONINO	7,936	22,023	2,788,814	351.41	126.63	275	698	89,934	1,964	4,891	1,165,617
NAVAJO	13,392	36,324	4,577,741	341.83	126.03	305	801	123,826	3,420	8,556	1,908,533
YAVAPAI	11,384	23,677	3,088,297	271.28	130.43	301	630	79,016	3,788	8,302	1,588,808
DISTRICT IV											
LA PAZ	1,663	3,499	470,547	282.95	134.48	11	20	4,434	324	591	171,360
MOHAVE	16,001	32,844	4,370,298	273.13	133.06	299	600	90,681	3,545	6,855	1,719,154
YUMA	12,999	34,735	4,209,196	323.81	121.18	539	1,303	173,381	2,212	5,615	1,557,468
DISTRICT V											
GILA	23,352	58,012	7,663,584	328.18	132.10	772	1,798	276,141	6,110	15,215	3,351,483
PINAL	4,743	10,742	1,443,933	304.43	134.42	145	305	49,275	1,046	2,212	585,518
	18,609	47,270	6,219,651	334.23	131.58	627	1,493	226,866	5,064	13,003	2,765,965
DISTRICT VI											
COCHISE	15,887	37,663	4,764,008	299.87	126.49	389	933	132,375	3,271	8,203	1,966,237
GRAHAM	8,810	19,415	2,479,536	281.45	127.71	226	510	66,475	1,303	2,852	874,730
GREENLEE	2,729	6,681	858,428	314.56	128.49	70	189	24,979	650	1,764	385,029
SANTA CRUZ	451	1,082	137,357	304.56	126.95	5	51	7,406	233	630	93,589
	3,897	10,485	1,288,687	330.69	122.91	88	183	33,515	1,085	2,957	612,889

1/EXCLUDES: PRIOR MONTH NET TOTALS OF : 10,623 CASES; 26,603 RECIPIENTS; \$1,867,282.
 AGED CANCELATIONS: 7,296 CASES; 10,203 RECIPIENTS; 309,568.
 SNAP COUPON CONVERSIONS: 0 CASES; 0 RECIPIENTS; \$0.
 SNAP REINSTATED: 0 CASES; \$0.
 SNAP ZERO PAY: 10,459 CASES; 42,437 RECIPIENTS.

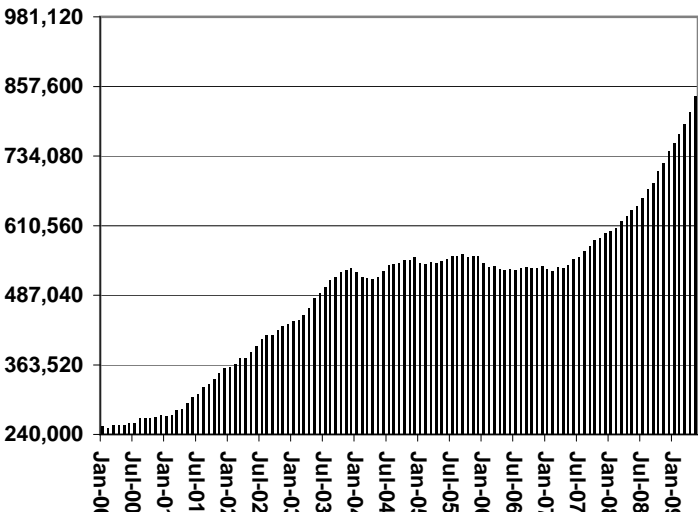
CHART 6

SUPPLEMENTAL NUTRITION ASSISTANCE PROGRAM (SNAP) COMPARISON OF HOUSEHOLDS, RECIPIENTS, PAYMENTS & AVERAGE PAYMENTS FOR 1999, 2000, 2001, 2002, 2003, 2004, 2005, 2006, 2007, 2008, & 2009

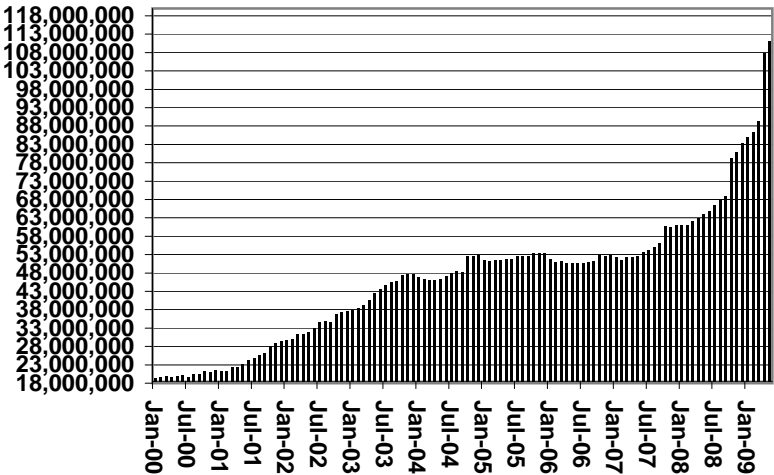
Households



Recipients



Payments



Average Payment Per Household

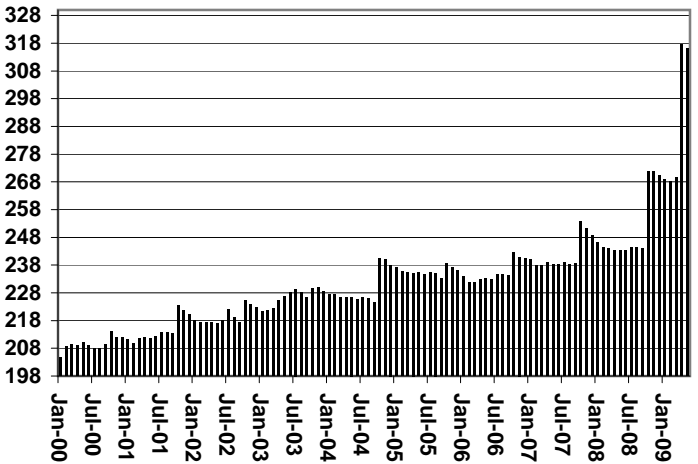


TABLE 7A
MEDICAL ASSISTANCE PROGRAM

RECIPIENTS

JUNE 2009

	SOBRA WOMAN 133% FPL	SOBRA CHILD	ADULT W/O CHILD 100% FPL	FOSTER CARE	1931 36% FPL	FEDERAL EMERGENCY SERVICES	INFANTS	ADULT W/O CHILD 40% FPL	MEDICAL W/SPEND DOWN	SOBRA WOMAN 100% FPL	SOBRA CHILD 100% FPL	TRANSITIONAL MEDICAL T1 - T4	1931 100% FPL	YATI	OTHER	TOTAL CASES
ARIZONA	10,886	65,569	47,746	11,476	323,988	90,141	48,575	126,576	6,136	3,917	204,280	35,955	103,747	284	24,973	1,104,249
DISTRICT I																
MARICOPA	5,612	36,903	21,911	5,817	179,080	70,668	28,752	61,362	3,507	1,955	117,210	18,360	50,993	162	12,484	614,776
DISTRICT II																
PIMA	1,722	10,006	8,870	3,241	47,942	10,443	6,891	22,440	750	560	29,932	5,773	17,336	71	4,357	170,334
DISTRICT III																
APACHE	208	1,372	1,033	43	11,104	118	1,005	4,423	89	98	4,239	708	2,628	2	357	27,427
COCONINO	303	1,389	1,269	142	8,149	570	1,138	3,709	129	120	4,506	901	2,634	8	359	25,326
NAVAJO	333	2,300	1,549	132	12,474	372	1,389	5,629	189	164	5,496	1,133	3,700	2	557	35,419
YAVAPAI	420	1,779	2,200	454	7,073	1,670	1,289	4,219	271	141	5,519	1,213	3,566	11	1,094	30,919
DISTRICT IV																
LA PAZ	35	221	239	12	1,253	177	162	717	22	16	674	129	351	0	152	4,160
MOHAVE	467	2,187	2,539	279	11,078	883	1,546	6,448	425	191	7,740	1,683	4,746	1	1,417	41,630
YUMA	571	2,580	2,507	276	11,252	1,899	1,881	3,736	213	208	9,475	2,387	6,001	4	1,259	44,249
DISTRICT V																
GILA	144	719	644	90	4,353	167	531	2,314	92	43	1,932	343	1,308	0	318	12,998
PINAL	561	3,765	2,233	614	17,299	1,826	2,161	6,709	237	214	9,256	1,634	5,128	16	1,231	52,884
DISTRICT VI																
COCHISE	268	1,224	1,466	262	6,652	676	874	2,741	108	105	3,859	869	2,599	7	783	22,493
GRAHAM	119	494	471	76	2,549	62	418	1,105	45	44	1,367	269	924	0	146	8,089
GREENLEE	22	67	59	6	462	8	59	162	6	6	200	26	109	0	21	1,213
SANTA CRUZ	101	563	756	32	3,268	602	479	862	53	52	2,875	527	1,724	0	438	12,332

TABLE 7B
MEDICAL ASSISTANCE PROGRAM
RECIPIENTS

CHANGE FROM

MAY 2009

	SOBRA WOMAN 133% FPL	SOBRA CHILD	ADULT W/O CHILD 100% FPL	FOSTER CARE	1931 36% FPL	FEDERAL EMERGENCY SERVICES	INFANTS	ADULT W/O CHILD 40% FPL	MEDICAL W/SPEND DOWN	SOBRA WOMAN 100% FPL	SOBRA CHILD 100% FPL	TRANSITIONAL MEDICAL T1 - T4	1931 100% FPL	YATI	OTHER	TOTAL CASES
ARIZONA	(173)	2,099	1,674	106	3,226	165	541	6,010	1	(90)	3,920	(1,382)	2,793	3	(111)	18,782
DISTRICT I																
MARICOPA	(91)	991	953	50	2,274	261	450	3,312	72	(64)	2,257	(84)	1,541	2	(72)	11,852
DISTRICT II																
PIMA	(1)	340	261	43	509	(79)	20	1,206	(79)	(15)	234	(172)	174	(1)	(35)	2,405
DISTRICT III																
APACHE	(11)	108	(7)	(3)	156	1	4	213	(3)	1	79	(14)	89	0	12	625
COCONINO	(6)	18	20	4	130	0	(4)	114	6	(8)	80	(79)	75	2	(23)	329
NAVAJO	(6)	61	23	0	179	6	(4)	199	10	5	71	27	106	0	(24)	653
YAVAPAI	(14)	(19)	51	(3)	(220)	33	(21)	157	(12)	4	226	12	134	(1)	9	336
DISTRICT IV																
LA PAZ	3	14	3	4	2	(9)	3	34	(6)	4	8	(15)	(15)	0	(5)	25
MOHAVE	(5)	80	90	4	(38)	9	25	109	18	0	115	(10)	50	(1)	28	474
YUMA	(22)	176	120	(1)	134	(48)	18	188	12	(6)	578	(848)	422	(2)	(4)	717
DISTRICT V																
GILA	2	43	7	2	70	5	19	60	6	(7)	(6)	44	23	0	(10)	258
PINAL	(16)	97	84	3	121	(15)	8	243	11	2	174	(54)	128	2	17	805
DISTRICT VI																
COCHISE	6	85	31	4	(114)	8	13	87	(13)	5	21	(50)	19	2	4	108
GRAHAM	(2)	44	23	0	(83)	(3)	10	26	(14)	(1)	17	(14)	12	0	(4)	11
GREENLEE	0	9	(1)	0	40	0	1	7	(5)	1	2	0	1	0	2	57
SANTA CRUZ	(10)	52	16	(1)	66	(4)	(1)	55	(2)	(11)	64	(125)	34	0	(6)	127

TABLE 7C
MEDICAL ASSISTANCE PROGRAM
RECIPIENTS

CHANGE FROM

JUNE 2008

	SOBRA WOMAN 133% FPL	SOBRA CHILD	ADULT W/O CHILD 100% FPL	FOSTER CARE	1931 36% FPL	FEDERAL EMERGENCY SERVICES	INFANTS	ADULT W/O CHILD 40% FPL	MEDICAL W/SPEND DOWN	SOBRA WOMAN 100% FPL	SOBRA CHILD 100% FPL	TRANSITIONAL MEDICAL T1 - T4	3E 1931 100% FPL	YATI	OTHER	TOTAL CASES
ARIZONA	(674)	3,049	8,278	1,218	56,416	6,746	(1,200)	28,570	1,222	385	36,937	(5,864)	23,227	30	1,446	159,786
DISTRICT I																
MARICOPA	(434)	1,934	4,859	681	37,101	6,199	(1,172)	17,319	885	159	23,270	(1,936)	13,462	29	811	103,167
DISTRICT II																
PIMA	(62)	356	1,036	346	6,764	92	(80)	4,078	36	0	3,844	(1,434)	2,781	0	176	17,933
DISTRICT III																
APACHE	(28)	(106)	195	(1)	614	26	52	137	43	21	673	(262)	459	0	(27)	1,796
COCONINO	(34)	(21)	90	22	965	22	(36)	636	46	24	756	(336)	419	2	(26)	2,529
NAVAJO	(17)	208	233	12	1,452	60	(50)	752	79	48	926	(309)	754	(1)	(2)	4,145
YAVAPAI	17	92	441	1	1,526	146	(5)	1,182	66	33	1,415	(146)	1,019	(1)	112	5,898
DISTRICT IV																
LA PAZ	(48)	220	650	32	2,450	(111)	(19)	1,861	78	6	2,357	(325)	1,755	3	216	9,125
MOHAVE	(10)	4	33	(3)	132	7	(19)	151	(4)	(6)	43	(52)	32	0	9	317
YUMA	(27)	101	485	23	1,398	32	(27)	1,333	100	20	1,236	(352)	930	0	163	5,415
	(11)	115	132	12	920	(150)	27	377	(18)	(8)	1,078	79	793	3	44	3,393
DISTRICT V																
GILA	(73)	209	463	108	3,819	184	16	1,852	(18)	59	2,336	(601)	1,527	(1)	122	10,002
PINAL	(12)	12	80	12	507	29	53	290	16	11	348	(214)	310	(1)	32	1,473
	(61)	197	383	96	3,312	155	(37)	1,562	(34)	48	1,988	(387)	1,217	0	90	8,529
DISTRICT VI																
COCHISE	5	157	311	17	1,725	128	94	753	7	35	1,360	(515)	1,051	(1)	64	5,191
GRAHAM	43	115	127	12	500	57	13	319	(21)	21	482	(228)	428	0	29	1,897
GREENLEE	(21)	37	70	11	465	(7)	34	230	17	20	302	(131)	237	(1)	11	1,274
SANTA CRUZ	5	41	24	(5)	196	1	2	46	(1)	(1)	101	(25)	55	0	(3)	436
	(22)	(36)	90	(1)	564	77	45	158	12	(5)	475	(131)	331	0	27	1,584

CHART 7

MEDICAL ASSISTANCE PROGRAM

COMPARISON OF RECIPIENTS

FOR 1999, 2000, 2001, 2002, 2003, 2004, 2005, 2006, 2007, 2008, & 2009

Total Recipients

