



DEPARTMENT OF ECONOMIC SECURITY

Your Partner For A Stronger Arizona

State of Arizona

Department of Economic Security

Family Assistance Administration

Statistical Bulletin

August, 2009

Phone: (602) 542-3678

<http://www.azdes.gov/faa/Statistics.asp>

**** STATISTICAL BULLETIN ****
ARIZONA DEPARTMENT OF ECONOMIC SECURITY
FAMILY ASSISTANCE ADMINISTRATION
BOX 6123, PHOENIX, ARIZONA 85005
PHONE (602) 542-3678

AUGUST 2009

THIS ISSUE OF THE STATISTICAL BULLETIN COMPARES AUGUST 2009 DATA FOR EACH OF THE INDICATED PROGRAMS WITH THE INFORMATION FOR JULY 2009 AND AUGUST 2008. STATEWIDE SUMMARIES OF ACTIVITY WITHIN EACH OF THE SPECIFIC PROGRAMS FOR THIS REPORT PERIOD ARE DISCUSSED BELOW. THE TABLES COMPARE CURRENT AND PRIOR MONTH DATA. DISTRICT AND COUNTY COMPARISONS ARE PROVIDED WITHIN THIS BULLETIN

TANF SUMMARY

COMPARING TO JULY 2009, AUGUST 2009 CASES INCREASED BY 445 (1.14%) TO 39,320. RECIPIENTS INCREASED BY 1,055 (1.24%) TO 85,878. PAYMENTS INCREASED BY \$49,084 (0.59%) TO \$8,430,889. AVERAGE PAYMENT PER CASE DECREASED BY \$1.19 (0.55%) TO \$214.42. PAYMENT PER RECIPIENT DECREASED BY \$0.65 (0.66%) TO \$98.17.

COMPARING TO AUGUST 2008, AUGUST 2009 CASES INCREASED BY 2,092 (5.62%). RECIPIENTS INCREASED BY 5,236 (6.49%). TOTAL PAYMENTS DECREASED BY \$1,377,580 (14.04%). THE AVERAGE PAYMENT PER CASE DECREASED BY \$49.05 (18.62%). THE AVERAGE PAYMENT PER RECIPIENT DECREASED BY \$23.46 (19.29%).

CASH ASSISTANCE (CA)

COMPARING TO JULY 2009, AUGUST 2009 CASES INCREASED BY 478 (1.31%) TO 36,909. RECIPIENTS INCREASED BY 1,010 (1.30%) TO 78,949. PAYMENTS INCREASED BY \$45,334 (0.57%) TO \$7,968,792. AVERAGE PAYMENT PER CASE DECREASED BY \$1.59 (0.73%) TO \$215.90. PAYMENT PER RECIPIENT DECREASED BY \$0.72 (0.71%) TO \$100.94.

COMPARING TO AUGUST 2008, AUGUST 2009 CASES INCREASED BY 1,347 (3.79%). RECIPIENTS INCREASED BY 3,301 (4.36%). TOTAL PAYMENTS DECREASED BY \$1,451,790 (15.41%). THE AVERAGE PAYMENT PER CASE DECREASED BY \$49.01 (18.50%). THE AVERAGE PAYMENT PER RECIPIENT DECREASED BY \$23.59 (18.94%).

CASH ASSISTANCE UNEMPLOYED PARENT PROGRAM (CA-UP)

COMPARING TO JULY 2009, AUGUST 2009 CASES INCREASED BY 27 (1.96%) TO 1,402. RECIPIENTS INCREASED BY 130 (2.72%) TO 4,913. PAYMENTS INCREASED BY \$9,605 (2.50%) TO \$393,828. AVERAGE PAYMENT PER CASE INCREASED BY \$1.47 (0.52%) TO \$280.90. PAYMENT PER RECIPIENT DECREASED BY \$0.17 (0.21%) TO \$80.16.

COMPARING TO AUGUST 2008, AUGUST 2009 CASES INCREASED BY 452 (47.58%). RECIPIENTS INCREASED BY 1,389 (39.42%). TOTAL PAYMENTS INCREASED BY \$57,843 (17.22%). THE AVERAGE PAYMENT PER CASE DECREASED BY \$72.77 (20.58%). THE AVERAGE PAYMENT PER RECIPIENT DECREASED BY \$15.18 (15.92%).

CASH ASSISTANCE WITH GRANT UNDER \$100 (CA-MOE)

COMPARING TO JULY 2009, AUGUST 2009 CASES DECREASED BY 71 (6.95%) TO 951. RECIPIENTS DECREASED BY 102 (5.19%) TO 1,864. PAYMENTS DECREASED BY \$6,828 (9.53%) TO \$64,844. AVERAGE PAYMENT PER CASE DECREASED BY \$1.94 (2.77%) TO \$68.19. AVERAGE PAYMENT PER RECIPIENT DECREASED BY \$1.67 (4.58%) TO \$34.79.

COMPARING TO AUGUST 2008, AUGUST 2009 CASES INCREASED BY 259 (37.43%). RECIPIENTS INCREASED BY 467 (33.43%). TOTAL PAYMENTS INCREASED BY \$14,334 (28.38%). THE AVERAGE PAYMENT PER CASE DECREASED BY \$4.80 (6.58%). THE AVERAGE PAYMENT PER RECIPIENT DECREASED BY \$1.37 (3.79%).

CASH ASSISTANCE UNEMPLOYED PARENT PROGRAM WITH GRANT UNDER \$100 (CA-UP-MOE) NEW PROGRAM STARTING 7/01

COMPARING TO JULY 2009, AUGUST 2009 CASES INCREASED BY 11 (23.40%) TO 58. RECIPIENTS INCREASED BY 17 (12.59%) TO 152. PAYMENTS INCREASED BY \$973 (39.68%) TO \$3,425. AVERAGE PAYMENT PER CASE INCREASED BY \$6.88 (13.19%) TO \$59.05. PAYMENT PER RECIPIENT INCREASED BY \$4.37 (24.06%) TO \$22.53.

COMPARING TO AUGUST 2008, AUGUST 2009 CASES INCREASED BY 34 (141.67%). RECIPIENTS INCREASED BY 79 (3.22%). TOTAL PAYMENTS INCREASED BY \$2,033 (146.05%). THE AVERAGE PAYMENT PER CASE INCREASED BY \$1.05 (1.81%). THE AVERAGE PAYMENT PER RECIPIENT INCREASED BY \$3.46 (18.14%).

TUBERCULOSIS CONTROL PROGRAM (TC)

COMPARING TO JULY 2009, AUGUST 2009 CASES INCREASED BY 0 (0.00%) TO 2. RECIPIENTS INCREASED BY 0 (0.00%) TO 2. PAYMENTS INCREASED BY \$0 (0.00%) TO \$281. AVERAGE PAYMENT PER CASE INCREASED BY \$73.92 (52.61%) TO \$214.42. AVERAGE PAYMENT PER RECIPIENT INCREASED BY \$0.00 (0.00%) TO \$140.50.

COMPARING TO AUGUST 2008, AUGUST 2009 CASES DECREASED BY 6 (75.00%). RECIPIENTS DECREASED BY 6 (75.00%). TOTAL PAYMENTS DECREASED BY \$648 (69.75%). THE AVERAGE PAYMENT PER CASE INCREASED BY \$98.30 (84.65%). THE AVERAGE PAYMENT PER RECIPIENT INCREASED BY \$24.38 (20.99%).

SUPPLEMENTAL NUTRITION ASSISTANCE PROGRAM (SNAP)

COMPARING TO JULY 2009, AUGUST 2009 SUPPLEMENTAL NUTRITION ASSISTANCE HOUSEHOLDS INCREASED BY 12,140 (3.22%) TO 389,097. PERSONS RECEIVING SUPPLEMENTAL NUTRITION ASSISTANCE INCREASED BY 25,509 (2.85%) TO 919,778. TOTAL COUPON ISSUANCE INCREASED BY \$3,150,300 (2.65%) TO \$121,988,283. THE AVERAGE HOUSEHOLD ALLOTMENT DECREASED BY \$1.74 (0.55%) TO \$313.52. THE AVERAGE ALLOTMENT PER PERSON DECREASED BY \$0.26 (0.19%) TO \$132.63.

COMPARING TO AUGUST 2008, AUGUST 2009 SUPPLEMENTAL NUTRITION ASSISTANCE HOUSEHOLDS INCREASED BY 110,550 (39.69%). PERSONS RECEIVING SUPPLEMENTAL NUTRITION ASSISTANCE INCREASED BY 244,114 (36.13%). TOTAL COUPON ISSUANCE INCREASED BY \$53,918,692 (79.21%). THE AVERAGE ALLOTMENT PER HOUSEHOLD INCREASED BY \$69.15 (28.30%). THE AVERAGE ALLOTMENT PER PERSON INCREASED BY \$31.89 (31.65%).

MEDICAL ASSISTANCE PROGRAM (MA) NEW TABLE INCLUDES PROP. 204 CATEGORIES

COMPARING TO JULY 2009, AUGUST 2009 TOTAL RECIPIENTS TOTAL RECIPIENTS INCREASED BY 18,607 (1.65%). SOBRA WOMEN AT 140% FPL DECREASED BY 178 (1.63%). SOBRA CHILDREN INCREASED BY 269 (0.41%). ADULTS W/O CHILD AT 100% INCREASED BY 1,578 (3.18%). FOSTER CARE INCREASED BY 82 (0.71%). 1931 AT 36% FPL INCREASED BY 4,216 (1.28%). EMERGENCY SERVICES DECREASED BY 323 (0.36%). INFANTS INCREASED BY 561 (1.14%). ADULT W/O CHILD AT 140% INCREASED BY 5,823 (4.37%). MEDICAL W/SPEND DOWN INCREASED BY 68 (1.07%). SOBRA WOMAN AT 100% DECREASED BY 48 (1.23%). SOBRA CHILD AT 100% INCREASED BY 3,982 (1.91%). TRANSITIONAL MEDICAL DECREASED BY 295 (0.84%). 1931 AT 100% INCREASED BY 2,678 (2.52%). YATI DECREASED BY 3 (1.00%). ALL OTHER CATEGORIES INCREASED BY 197 (0.79%).

COMPARING TO AUGUST 2008, AUGUST 2009 TOTAL RECIPIENTS TOTAL RECIPIENTS INCREASED BY 175,657 (18.13%). SOBRA WOMEN AT 140% FPL DECREASED BY 1,106 (9.31%). SOBRA CHILDREN INCREASED BY 2,482 (3.90%). ADULTS W/O CHILD AT 100% INCREASED BY 10,691 (26.43%). FOSTER CARE INCREASED BY 1,050 (9.96%). 1931 AT 36% FPL INCREASED BY 53,925 (19.28%). EMERGENCY SERVICES INCREASED BY 6,630 (7.95%). INFANTS DECREASED BY 431 (0.85%). ADULT W/O CHILD AT 140% INCREASED BY 37,059 (36.28%). MEDICAL W/SPEND DOWN INCREASED BY 1,256 (24.43%). SOBRA WOMAN AT 100% INCREASED BY 330 (9.32%). SOBRA CHILD AT 100% INCREASED BY 42,329 (24.87%). TRANSITIONAL MEDICAL DECREASED BY 6,162 (14.97%). 1931 AT 100% INCREASED BY 26,739 (32.60%). YATI INCREASED BY 31 (11.65%). ALL OTHER CATEGORIES INCREASED BY 834 (3.44%).

TANF SUMMARY

TABLES 1, 1A, 1B, & 1C: ARIZONA 1

	AUGUST 2009							JULY 2009			AUGUST 2008		
	FAMILIES (CASES)	PERSONS (RECIP.)	ADULTS	CHILDREN	TOTAL PAYMENTS	AVERAGE	AVERAGE	FAMILIES (CASES)	PERSONS (RECIP.)	TOTAL PAYMENTS	FAMILIES (CASES)	PERSONS (RECIP.)	TOTAL PAYMENTS
						PAYMENT/ CASE	PAYMENT/ RECIP.						
ARIZONA	39,320	85,878	21,337	64,541	8,430,889	214.42	98.17	445	1,055	49,084	2,092	5,236	(1,377,580)
DISTRICT I													
MARICOPA	23,683	52,525	12,393	40,132	5,053,848	213.40	96.22	393	947	70,571	2,526	5,941	(581,412)
DISTRICT II													
PIMA	6,678	13,835	3,621	10,214	1,405,160	210.42	101.57	31	97	(6,832)	(74)	(131)	(339,715)
DISTRICT III													
APACHE	5	8	2	6	647	129.40	80.88	(21)	(55)	(5,224)	(91)	(192)	(23,400)
COCONINO	238	512	128	384	48,965	205.74	95.63	1	3	160	(2)	14	(8,636)
NAVAJO	1,456	3,750	1,148	2,602	394,564	270.99	105.22	17	33	4,123	132	491	28,379
YAVAPAI	710	1,370	303	1,067	136,795	192.67	99.85	1	6	(2,284)	25	64	(29,548)
DISTRICT IV													
LA PAZ	180	391	118	273	37,505	208.36	95.92	(1)	(6)	1,295	(35)	(48)	(15,254)
MOHAVE	1,226	2,506	711	1,795	248,665	202.83	99.23	(18)	(65)	(7,334)	(149)	(425)	(108,280)
YUMA	1,035	2,231	494	1,737	217,234	209.89	97.37	36	89	5,035	(61)	(165)	(71,057)
DISTRICT V													
GILA	703	1,498	540	958	172,322	245.12	115.03	16	23	665	(27)	(1)	(16,937)
PINAL	1,990	4,412	1,167	3,245	416,133	209.11	94.32	29	61	3,321	118	229	(78,487)
DISTRICT VI													
COCHISE	821	1,640	400	1,240	171,778	209.23	104.74	(27)	(46)	(6,841)	(201)	(390)	(90,439)
GRAHAM	295	577	175	402	65,492	222.01	113.50	(7)	(15)	(4,129)	(56)	(107)	(22,784)
GREENLEE	34	70	15	55	7,228	212.59	103.26	(3)	(9)	(764)	1	3	(534)
SANTA CRUZ	266	553	122	431	54,553	205.09	98.65	(2)	(8)	(2,678)	(14)	(47)	(19,476)

1/EXCLUDES: PRIOR MONTH NET TOTALS OF 2,184 CASES; 5,421 RECIPIENTS; \$354,481.
 GRANT DIVERSION TOTALS OF: 381 CASES; \$307,514.
 ZERO PAY TOTALS OF 829 CASES; 2,668 RECIPIENTS.

RRP TOTALS OF: 631 CASES; 1,114 RECIPIENTS; 144,887.

	CURRENT MO. CASES	CURRENT MO. RECIP.	CURRENT MO. DOLLARS	PRIOR MO. CASES	PRIOR MO. RECIP.	PRIOR MO. DOLLARS
PASQUAYAOUI	375	1,118	\$118,441	20	65	5,433
WM APACHE	794	2,280	\$247,342	19	48	2,788
SALT RIVER	74	240	\$22,696	6	16	1,246
SAN CARLOS	626	1,381	\$164,976	16	40	1,910
HOPI	108	298	\$23,797	6	14	818
TOTAL	1,977	5,317	\$577,252	67	183	\$12,195

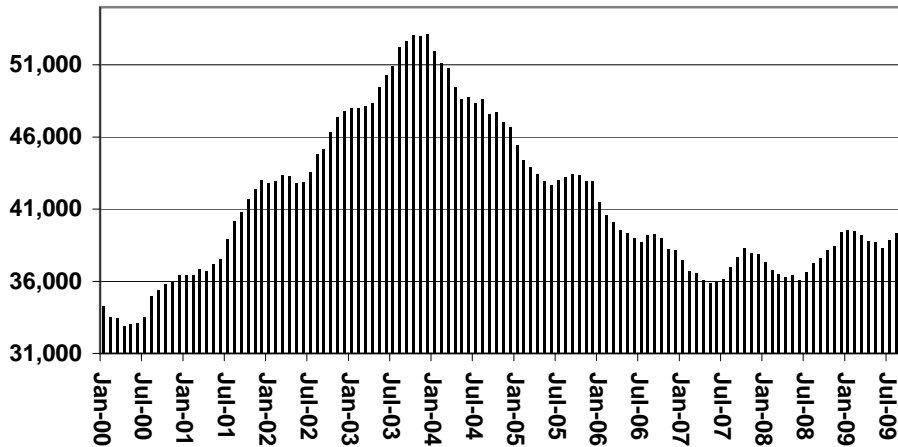
TANF SUMMARY

TABLES 1, 1A, 1B, & 1C

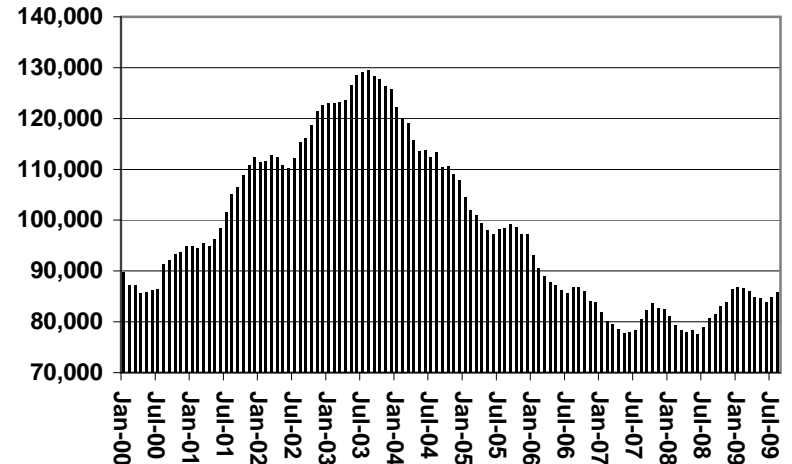
COMPARISON OF CASES, RECIPIENTS, PAYMENTS & AVERAGE PAYMENTS

FOR 2000, 2001, 2002, 2003, 2004, 2005, 2006, 2007, 2008, & 2009

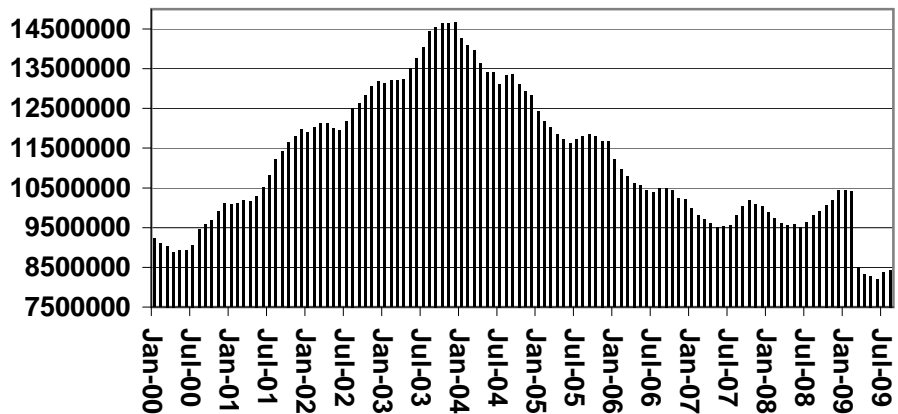
Cases



Recipients



Payments



Average Payments Per Recipient

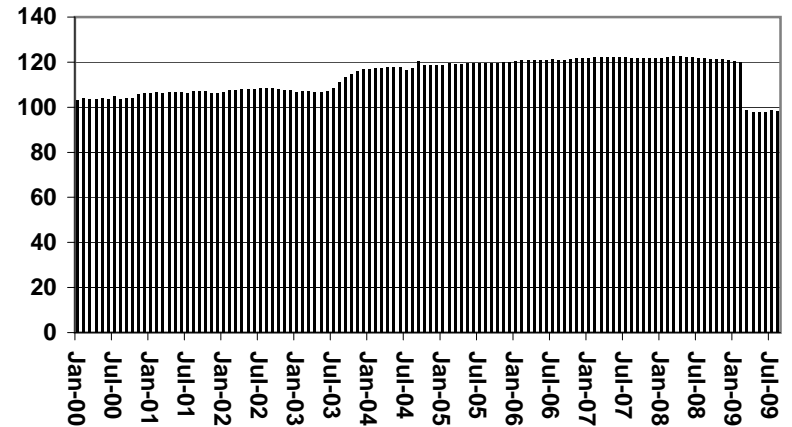


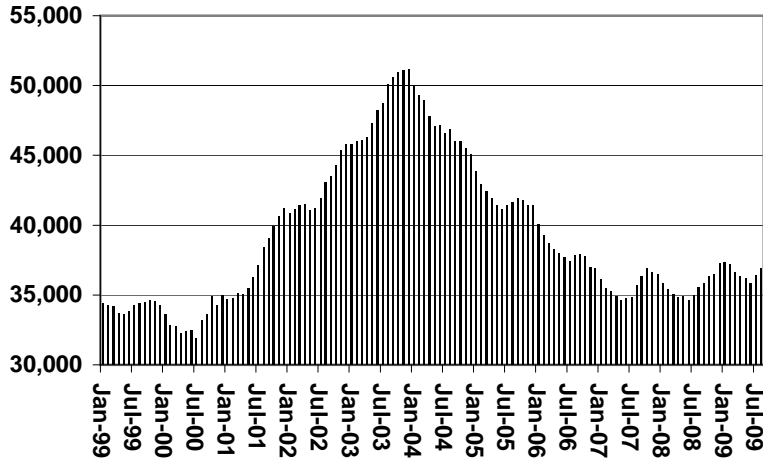
CHART 1

CASH ASSISTANCE PROGRAM

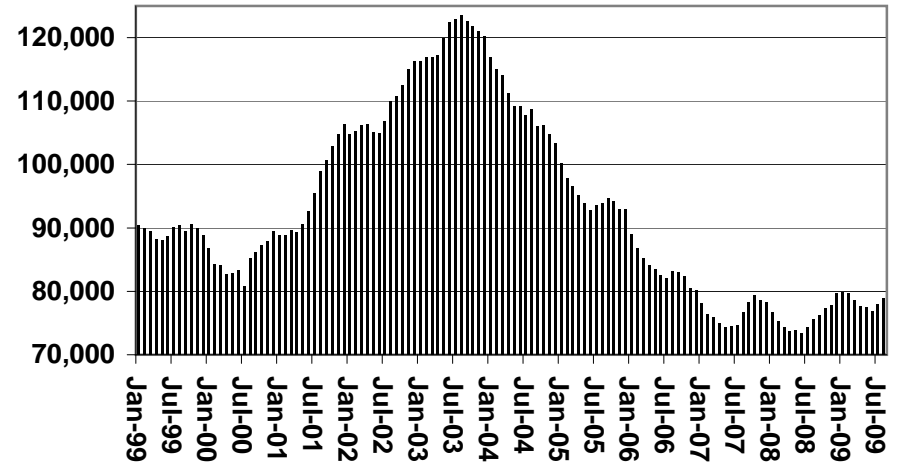
COMPARISON OF CASES, RECIPIENTS, PAYMENTS & AVERAGE PAYMENTS

FOR 1999, 2000, 2001, 2002, 2003, 2004, 2005, 2006, 2007, 2008, & 2009

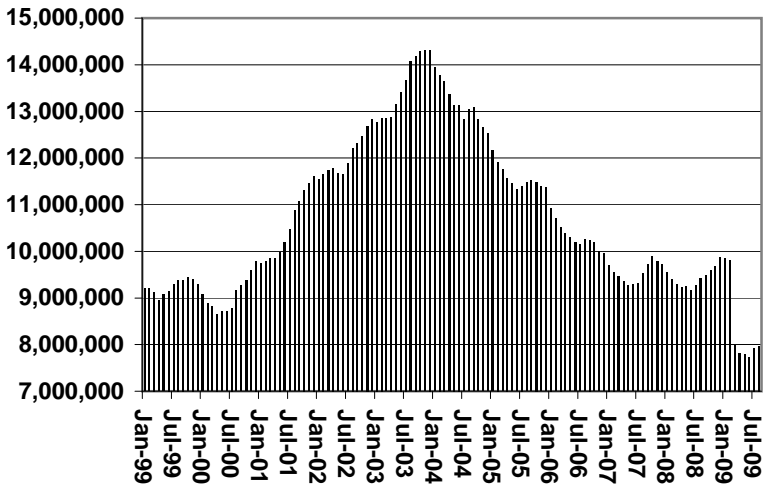
Cases



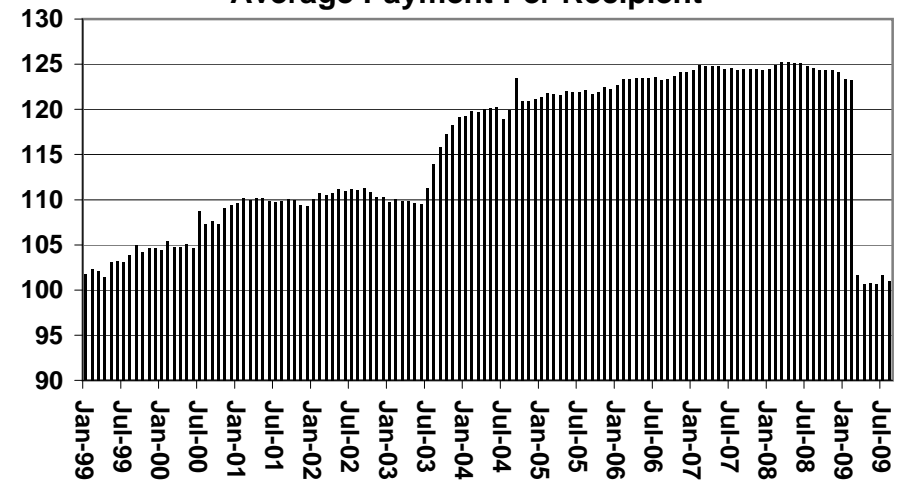
Recipients



Payments



Average Payment Per Recipient



**TABLE 1A
CA-UP**

CASH ASSISTANCE UNEMPLOYED PARENT PROGRAM: ARIZONA 1

	AUGUST 2009							CHANGE FROM			AUGUST 2008		
	FAMILIES (CASES)	PERSONS (RECIP.)	ADULTS	CHILDREN	TOTAL PAYMENTS	AVERAGE PAYMENT/ CASE	AVERAGE PAYMENT/ RECIP.	FAMILIES (CASES)	PERSONS (RECIP.)	TOTAL PAYMENTS	FAMILIES (CASES)	PERSONS (RECIP.)	TOTAL PAYMENTS
ARIZONA	1,402	4,913	1,846	3,067	393,828	280.90	80.16	27	130	9,605	452	1,389	57,843
DISTRICT I													
MARICOPA	945	3,195	1,080	2,115	260,486	275.65	81.53	60	252	20,024	449	1,405	87,999
DISTRICT II													
PIMA	242	918	397	521	72,368	299.04	78.83	(1)	4	(989)	90	335	17,038
DISTRICT III													
APACHE	0	0	0	0	0	0.00	0.00	(1)	(6)	(449)	(5)	(20)	(1,732)
COCONINO	4	15	6	9	1,283	320.75	85.53	1	3	443	0	1	238
NAVAJO	22	76	41	35	6,740	306.36	88.68	1	(6)	98	(64)	(279)	(26,924)
YAVAPAI	14	46	20	26	3,596	256.86	78.17	3	11	729	8	27	1,685
DISTRICT IV													
LA PAZ	5	16	9	7	1,441	288.20	90.06	(5)	(17)	(941)	0	(1)	(304)
MOHAVE	27	102	52	50	8,060	298.52	79.02	(12)	(41)	(3,374)	(29)	(117)	(12,247)
YUMA	27	102	44	58	7,592	281.19	74.43	3	15	740	(3)	0	(2,529)
DISTRICT V													
GILA	4	16	7	9	886	221.50	55.38	(3)	(11)	(1,197)	(3)	(4)	(1,199)
PINAL	94	353	157	196	25,600	272.34	72.52	(6)	(33)	(2,191)	23	68	(29)
DISTRICT VI													
COCHISE	12	51	22	29	4,191	349.25	82.18	(9)	(29)	(2,212)	(7)	(9)	(1,471)
GRAHAM	2	6	4	2	556	278.00	92.67	(3)	(9)	(635)	(6)	(21)	(2,250)
GREENLEE	0	0	0	0	0	0.00	0.00	0	0	0	0	0	0
SANTA CRUZ	4	17	7	10	1,029	257.25	60.53	(1)	(3)	(441)	(1)	4	(432)

1/EXCLUDES: PRIOR MONTH NET TOTALS OF: 151 CASES; 608 RECIPIENTS; \$55,127.
GRANT DIVERSION TOTALS OF: 0 CASES; \$0.
ZERO PAY TOTALS OF 89 CASES; 391 RECIPIENTS.

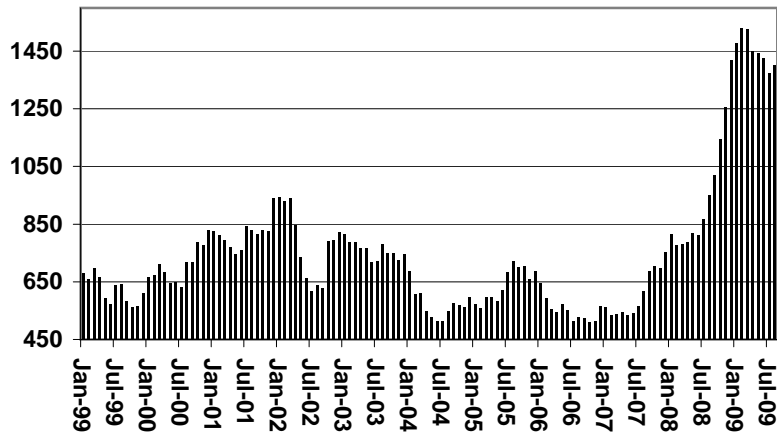
	CURRENT MO. CASES	CURRENT MO. RECIP.	CURRENT MO. DOLLARS	PRIOR MO. CASES	PRIOR MO. RECIP.	PRIOR MO. DOLLARS
PASQUA/YAQUI	32	144	12,739	3	15	787
WM APACHE	8	31	2,819	1	3	215
SALT RIVER	0	0	0	0	0	0
SAN CARLOS	0	0	0	0	0	0
HOPÍ	0	0	0	0	0	0
TOTAL	40	175	15,558	4	18	1,002

CASES WITH GRANT UNDER \$100 (SEE TABLE 1C).

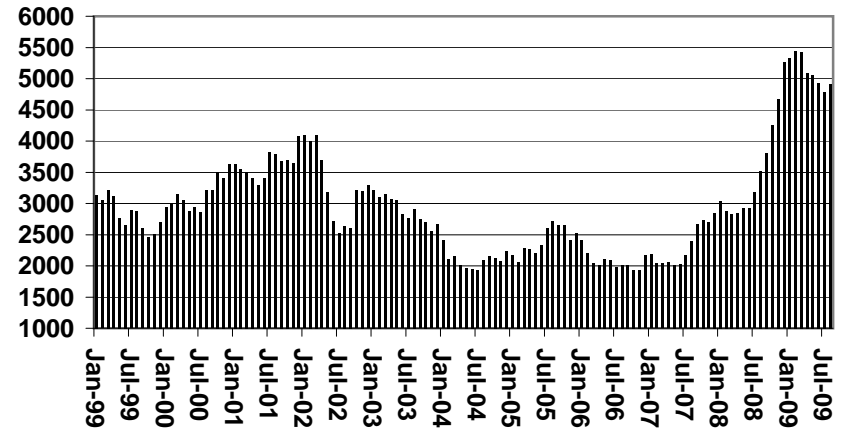
CHART 1A

CASH ASSISTANCE UNEMPLOYED PARENT PROGRAM COMPARISON OF CASES, RECIPIENTS, PAYMENTS & AVERAGE PAYMENTS FOR 1999, 2000, 2001, 2002, 2003, 2004, 2005, 2006, 2007, 2008, & 2009

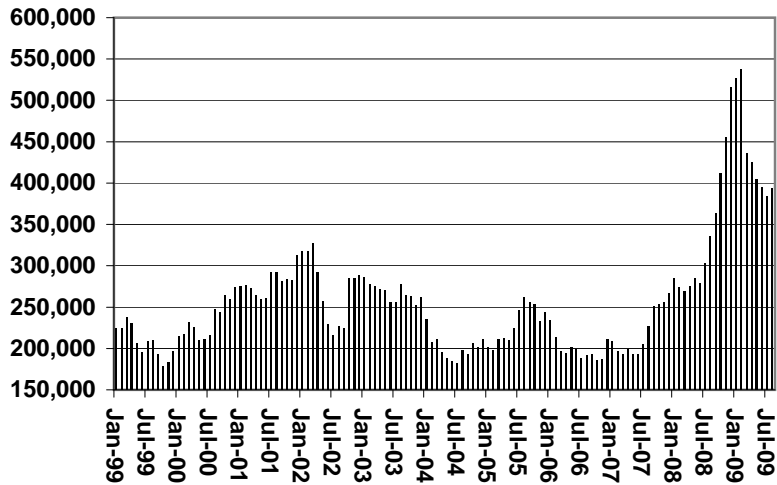
Cases



Recipients



Payments



Average Payment Per Recipient

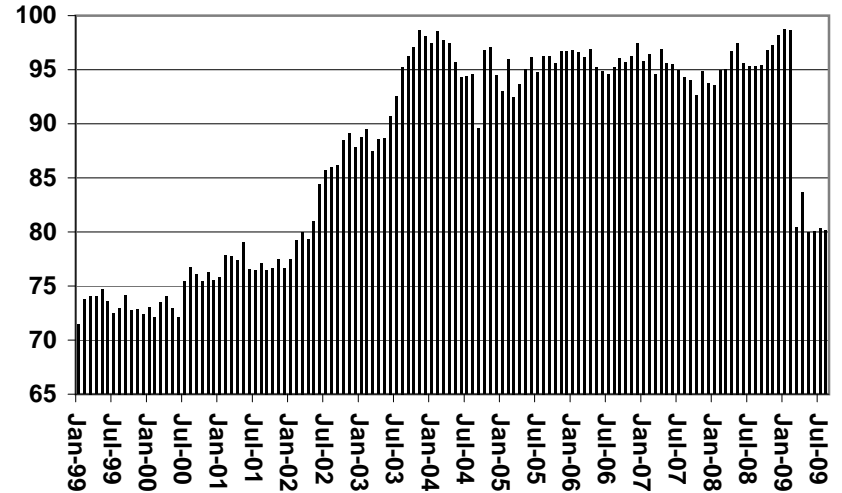


TABLE 1B 1/

**CASH ASSISTANCE: ARIZONA
CASES WITH GRANT UNDER \$100**

	AUGUST 2009							CHANGE FROM					
	FAMILIES (CASES)	PERSONS (RECIP.)	ADULTS	CHILDREN	TOTAL PAYMENTS	AVERAGE PAYMENT/ CASE	AVERAGE PAYMENT/ RECIP.	FAMILIES (CASES)	PERSONS (RECIP.)	TOTAL PAYMENTS	FAMILIES (CASES)	PERSONS (RECIP.)	TOTAL PAYMENTS
ARIZONA	951	1,864	480	1,384	64,844	68.19	34.79	(71)	(102)	(6,828)	259	467	14,334
DISTRICT I													
MARICOPA	585	1,178	276	902	38,410	65.66	32.61	(59)	(94)	(5,111)	194	386	11,251
DISTRICT II													
PIMA	155	283	90	193	11,758	75.86	41.55	(4)	(11)	(600)	16	(7)	1,461
DISTRICT III													
APACHE	2	4	1	3	99	49.50	24.75	0	1	(65)	(1)	1	(306)
COCONINO	4	7	4	3	280	70.00	40.00	(3)	(5)	(162)	(3)	(8)	(323)
NAVAJO	19	41	11	30	1,136	59.79	27.71	5	10	121	10	25	538
YAVAPAI	31	56	14	42	1,829	59.00	32.66	(5)	(10)	(586)	12	19	858
DISTRICT IV													
LA PAZ	4	9	2	7	460	115.00	51.11	(7)	(11)	(371)	(1)	0	(38)
MOHAVE	33	73	22	51	2,172	65.82	29.75	(9)	(7)	(640)	6	24	(85)
YUMA	25	43	16	27	2,244	89.76	52.19	6	3	755	5	(2)	476
DISTRICT V													
GILA	10	14	4	10	582	58.20	41.57	4	8	147	4	5	176
PINAL	42	74	19	55	2,738	65.19	37.00	(7)	(13)	(649)	9	(5)	60
DISTRICT VI													
COCHISE	23	41	11	30	1,921	83.52	46.85	(2)	1	(133)	1	7	(134)
GRAHAM	9	20	5	15	585	65.00	29.25	6	16	170	7	18	422
GREENLEE	0	0	0	0	0	0.00	0.00	(1)	(3)	(56)	0	0	0
SANTA CRUZ	9	21	5	16	630	70.00	30.00	5	13	352	0	4	(22)

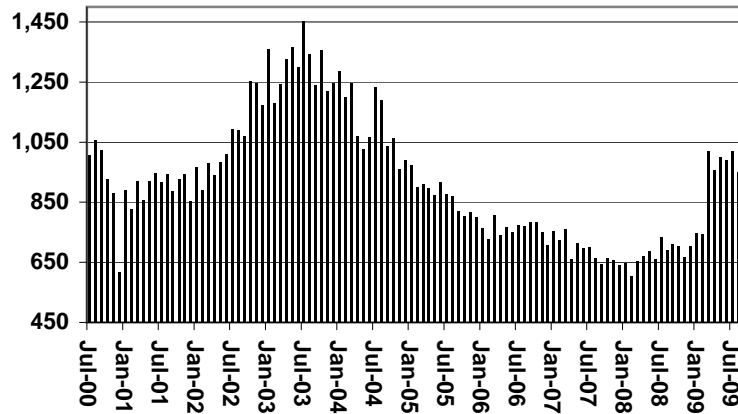
EXCLUDES: PRIOR MONTH NET TOTALS OF 996 CASES; 2,067 RECIPIENTS; \$57,445.

CHART 1B

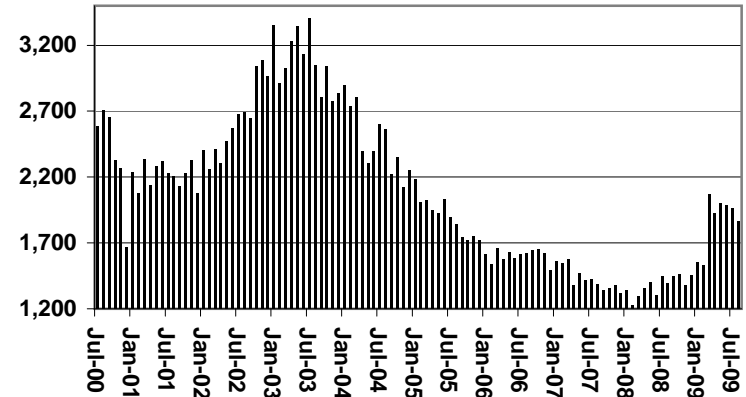
CASH ASSISTANCE PROGRAM CASES WITH GRANT UNDER \$100

FOR 1999, 2000, 2001, 2002, 2003, 2004, 2005, 2006, 2007, 2008, & 2009

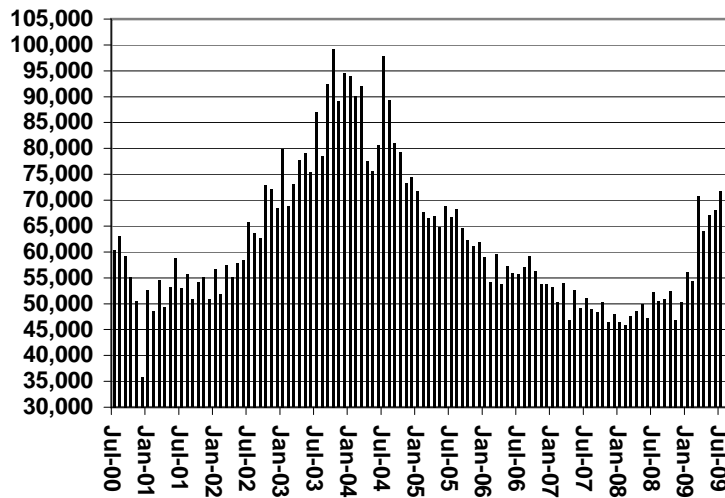
Cases



Recipients



Payments



Average Payment Per Recipient

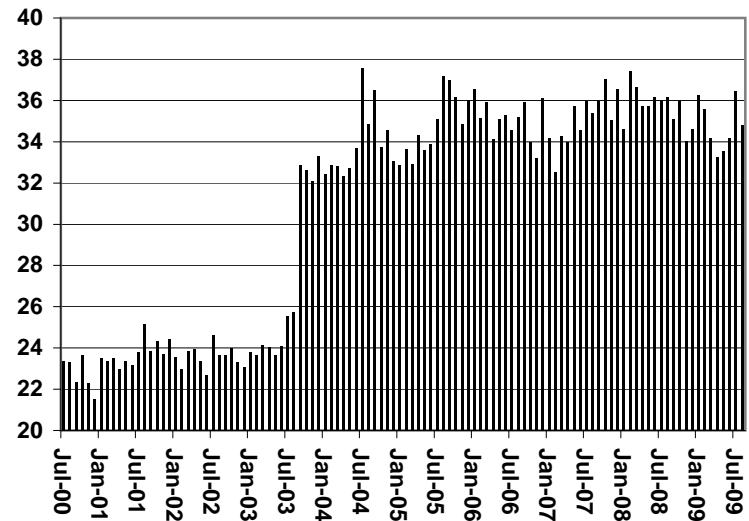


TABLE 1C 1/

CASH ASSISTANCE UNEMPLOYED PARENT PROGRAM: ARIZONA
CASES WITH GRANT UNDER \$100

CHANGE FROM

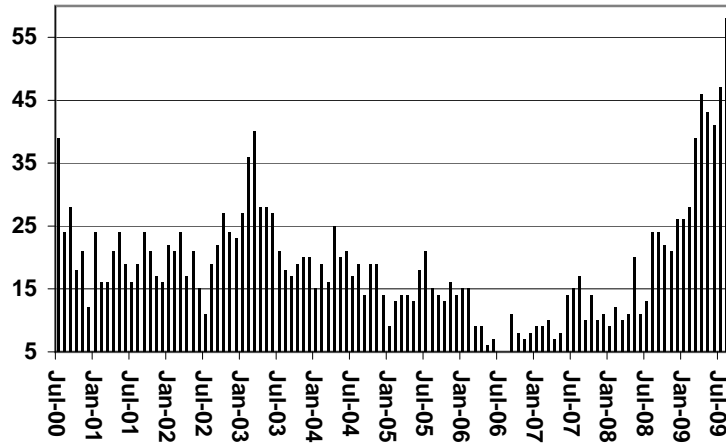
	AUGUST 2009							JULY 2009			AUGUST 2008		
	FAMILIES (CASES)	PERSONS (RECIP.)	ADULTS	CHILDREN	TOTAL PAYMENTS	AVERAGE PAYMENT/ CASE	AVERAGE PAYMENT/ RECIP.	FAMILIES (CASES)	PERSONS (RECIP.)	TOTAL PAYMENTS	FAMILIES (CASES)	PERSONS (RECIP.)	TOTAL PAYMENTS
ARIZONA	58	152	42	110	3,425	59.05	22.53	11	17	973	34	79	2,033
DISTRICT I													
MARICOPA	47	123	31	92	2,635	56.06	21.42	9	16	651	34	93	1,834
DISTRICT II													
PIMA	3	4	0	4	198	66.00	49.50	1	0	110	(1)	(8)	3
DISTRICT III													
APACHE	0	0	0	0	0	0.00	0.00	0	0	0	0	0	0
COCONINO	0	0	0	0	0	0.00	0.00	0	0	0	0	0	0
NAVAJO	0	0	0	0	0	0.00	0.00	0	0	0	0	0	0
YAVAPAI	2	4	0	4	170	85.00	42.50	0	(2)	50	0	0	48
DISTRICT IV													
LA PAZ	0	0	0	0	0	0.00	0.00	0	0	0	(1)	(5)	(24)
MOHAVE	1	3	2	1	57	57.00	19.00	0	0	44	(2)	(12)	(151)
YUMA	1	5	2	3	80	80.00	16.00	(1)	(4)	(28)	0	(2)	38
DISTRICT V													
GILA	1	3	1	2	88	88.00	29.33	0	0	0	1	3	88
PINAL	1	4	2	2	65	65.00	16.25	1	4	65	1	4	65
DISTRICT VI													
COCHISE	1	3	2	1	81	81.00	27.00	1	3	81	1	3	81
GRAHAM	1	3	2	1	51	51.00	17.00	0	0	0	1	3	51
GREENLEE	0	0	0	0	0	0.00	0.00	0	0	0	0	0	0
SANTA CRUZ	0	0	0	0	0	0.00	0.00	0	0	0	0	0	0

EXCLUDES: PRIOR MONTH NET TOTALS OF 93 CASES; 305 RECIPIENTS; \$4,805.

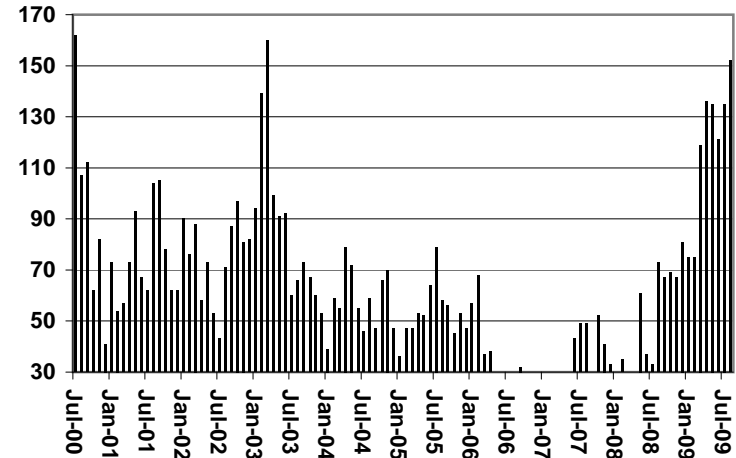
CHART 1C

CASH ASSISTANCE UNEMPLOYED PARENT PROGRAM CASES WITH GRANT UNDER \$100 FOR 1999, 2000, 2001, 2002, 2003, 2004, 2005, 2006, 2007, 2008, & 2009

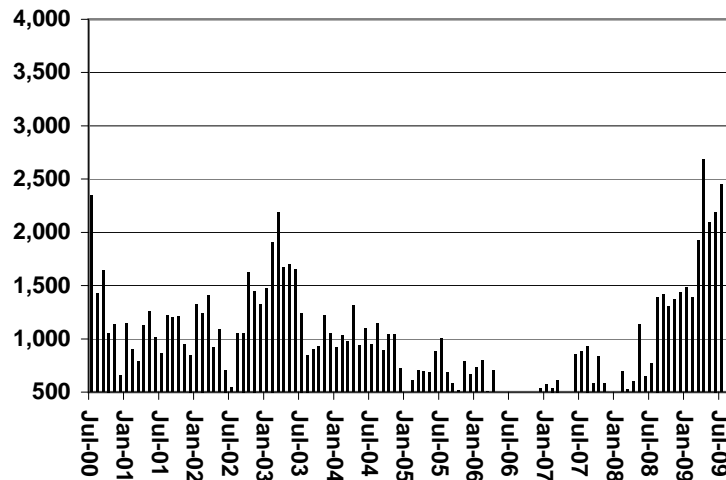
Cases



Recipients



Payments



Average Payment Per Recipient

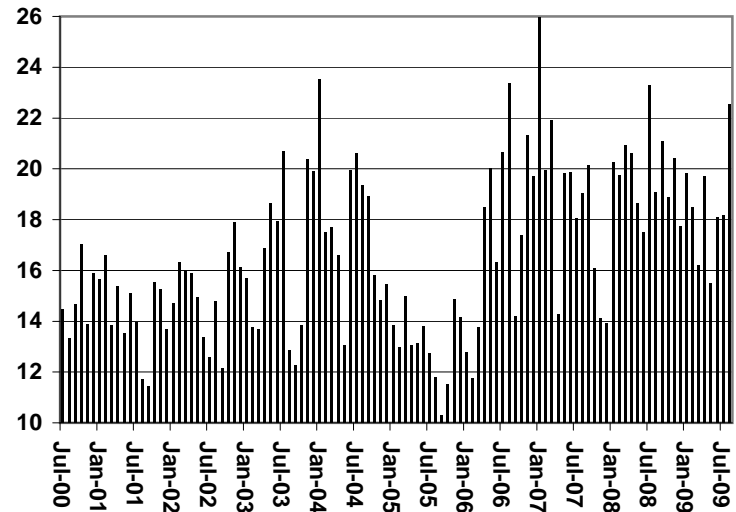


TABLE 4

TUBERCULOSIS CONTROL: ARIZONA 1/

	CHANGE FROM											
	AUGUST 2009					JULY 2009			AUGUST 2008			
	NUMBER OF CASES	PERSONS (RECIP.)	TOTAL PAYMENTS	AVERAGE PAYMENT/ CASE	AVERAGE PAYMENT/ RECIP.	NUMBER OF CASES	PERSONS (RECIP.)	TOTAL PAYMENTS	NUMBER OF CASES	PERSONS (RECIP.)	TOTAL PAYMENTS	
ARIZONA	2	2	281	140.50	140.50	0	0	0	(6)	(6)	(648)	
DISTRICT I												
MARICOPA	1	1	173	173.00	173.00	0	0	0	(6)	(6)	(648)	
DISTRICT II												
PIMA	0	0	0	0.00	0.00	0	0	0	0	0	0	
DISTRICT III	0	0	0	0.00	0.00	0	0	0	(1)	(1)	(108)	
APACHE	0	0	0	0.00	0.00	0	0	0	0	0	0	
COCONINO	0	0	0	0.00	0.00	0	0	0	0	0	0	
NAVAJO	0	0	0	0.00	0.00	0	0	0	0	0	0	
YAVAPAI	0	0	0	0.00	0.00	0	0	0	(1)	(1)	(108)	
DISTRICT IV	0	0	0	0.00	0.00	0	0	0	0	0	0	
LA PAZ	0	0	0	0.00	0.00	0	0	0	0	0	0	
MOHAVE	0	0	0	0.00	0.00	0	0	0	0	0	0	
YUMA	0	0	0	0.00	0.00	0	0	0	0	0	0	
DISTRICT V	0	0	0	0.00	0.00	0	0	0	0	0	0	
GILA	0	0	0	0.00	0.00	0	0	0	0	0	0	
PINAL	0	0	0	0.00	0.00	0	0	0	0	0	0	
DISTRICT VI	1	1	108	108.00	108.00	0	0	0	1	1	108	
COCHISE	1	1	108	108.00	108.00	0	0	0	1	1	108	
GRAHAM	0	0	0	0.00	0.00	0	0	0	0	0	0	
GREENLEE	0	0	0	0.00	0.00	0	0	0	0	0	0	
SANTA CRUZ	0	0	0	0.00	0.00	0	0	0	0	0	0	

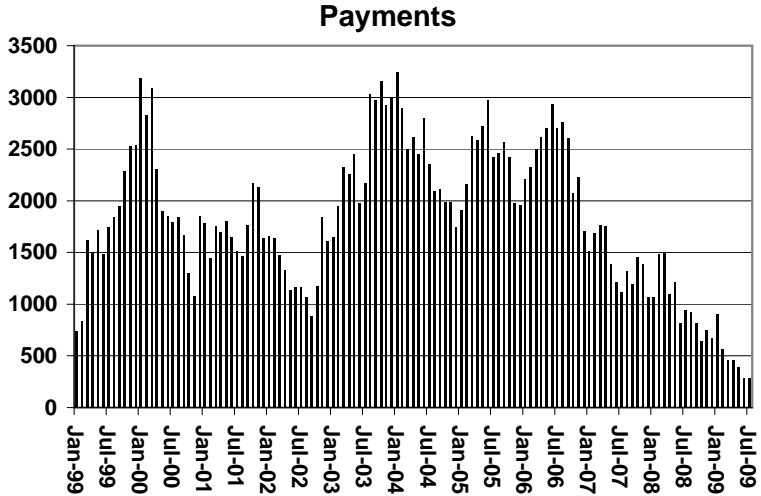
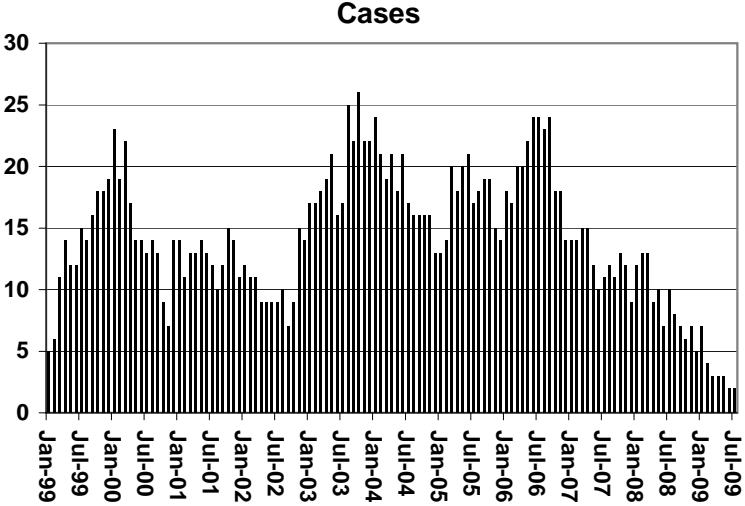
1/EXCLUDES: PRIOR MONTH NET TOTALS OF : 0 CASES; 0 RECIPIENTS; \$0.

CHART 4

TUBERCULOSIS CONTROL PROGRAM

COMPARISON OF CASES, PAYMENTS & AVERAGE PAYMENTS

FOR 1999, 2000, 2001, 2002, 2003, 2004, 2005, 2006, 2007, 2008, & 2009



Average Payment Per Case

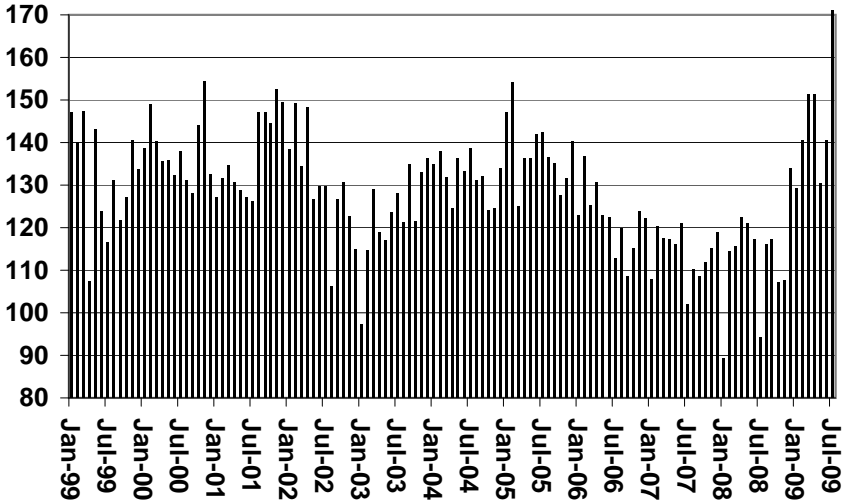


TABLE 6

SUPPLEMENTAL NUTRITION ASSISTANCE PROGRAM: ARIZONA 1

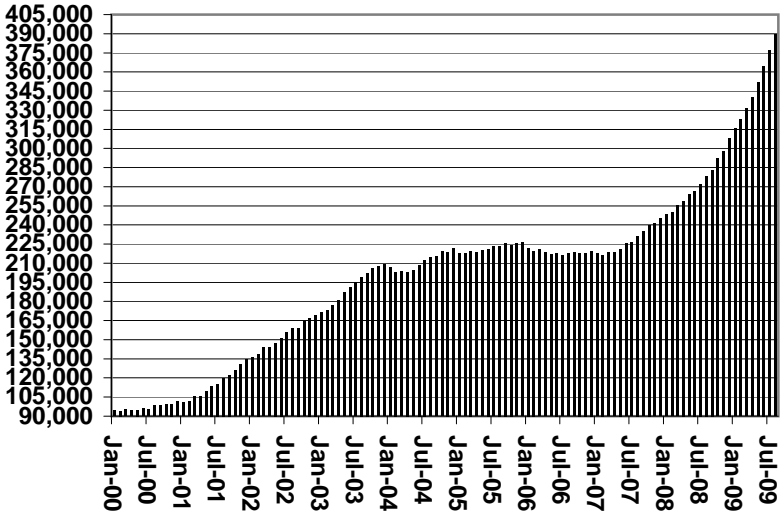
	CHANGE FROM										
	AUGUST 2009					JULY 2009			AUGUST 2008		
	HOUSEHOLDS	PERSONS	TOTAL COUPON ISSUANCE	AVERAGE ALLOT./ HOUSEHOLD	AVERAGE ALLOT./ PERSON	HOUSEHOLDS	PERSONS	TOTAL COUPON ISSUANCE	HOUSEHOLDS	PERSONS	TOTAL COUPON ISSUANCE
ARIZONA	389,097	919,778	121,988,283	313.52	132.63	12,140	25,509	3,150,300	110,550	244,114	53,918,692
DISTRICT I											
MARICOPA	207,454	490,998	66,269,904	319.44	134.97	6,875	14,603	1,821,407	65,837	145,750	30,787,016
DISTRICT II											
PIMA	67,276	147,805	19,829,625	294.75	134.16	2,286	4,354	574,670	17,821	35,684	8,523,273
DISTRICT III											
APACHE	6,675	20,437	2,565,929	384.41	125.55	206	480	64,789	32	355	594,256
COCONINO	8,381	23,157	2,905,751	346.71	125.48	263	619	61,997	2,323	5,636	1,257,887
NAVAJO	13,911	37,662	4,747,972	341.31	126.07	264	595	50,843	3,619	8,987	1,970,743
YAVAPAI	11,914	24,684	3,210,378	269.46	130.06	282	598	75,734	3,983	8,455	1,625,647
DISTRICT IV											
LA PAZ	1,706	3,607	481,920	282.49	133.61	14	34	3,335	318	580	168,952
MOHAVE	16,563	33,787	4,462,956	269.45	132.09	313	507	60,615	3,685	6,955	1,707,840
YUMA	14,036	37,615	4,569,017	325.52	121.47	558	1,537	195,394	2,631	6,683	1,731,314
DISTRICT V											
GILA	24,639	60,800	8,013,791	325.25	131.81	683	1,338	159,794	6,644	16,028	3,506,119
PINAL	5,005	11,316	1,513,866	302.47	133.78	172	346	40,364	1,218	2,524	622,742
	19,634	49,484	6,499,925	331.05	131.35	511	992	119,430	5,426	13,504	2,883,377
DISTRICT VI											
COCHISE	16,542	39,226	4,931,040	298.09	125.71	396	844	81,722	3,657	9,001	2,045,645
GRAHAM	9,125	19,987	2,543,474	278.74	127.26	251	431	50,029	1,425	2,907	890,491
GREENLEE	2,791	6,840	860,446	308.29	125.80	69	157	12,979	732	1,959	383,798
SANTA CRUZ	524	1,290	153,717	293.35	119.16	10	51	2,810	287	816	108,149
	4,102	11,109	1,373,403	334.81	123.63	66	205	15,904	1,213	3,319	663,207

1/EXCLUDES: PRIOR MONTH NET TOTALS OF : 11,079 CASES; 28,436 RECIPIENTS; \$1,819,562.
 AGED CANCELATIONS: 7,537 CASES; 10,330 RECIPIENTS; 305,150.
 SNAP COUPON CONVERSIONS: 0 CASES; 0 RECIPIENTS; \$0.
 SNAP REINSTATED: 0 CASES; \$0.
 SNAP ZERO PAY: 11,322 CASES; 46,347 RECIPIENTS.

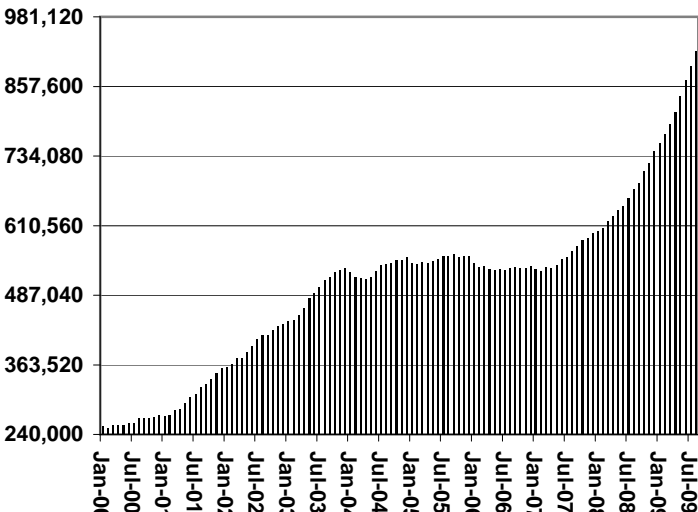
CHART 6

SUPPLEMENTAL NUTRITION ASSISTANCE PROGRAM (SNAP) COMPARISON OF HOUSEHOLDS, RECIPIENTS, PAYMENTS & AVERAGE PAYMENTS FOR 1999, 2000, 2001, 2002, 2003, 2004, 2005, 2006, 2007, 2008, & 2009

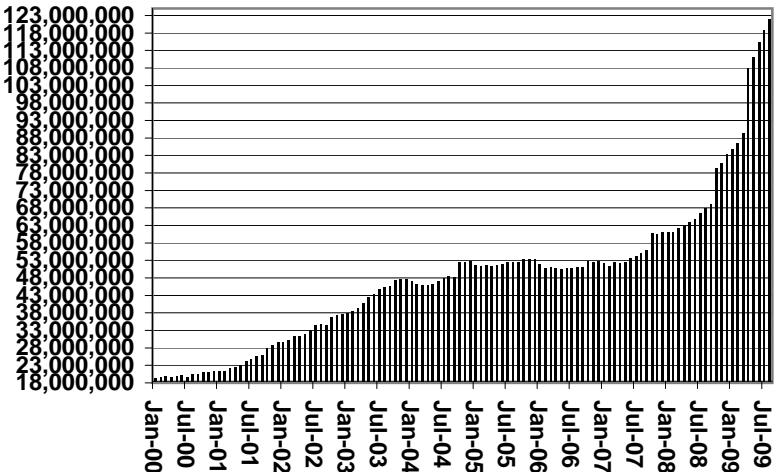
Households



Recipients



Payments



Average Payment Per Household

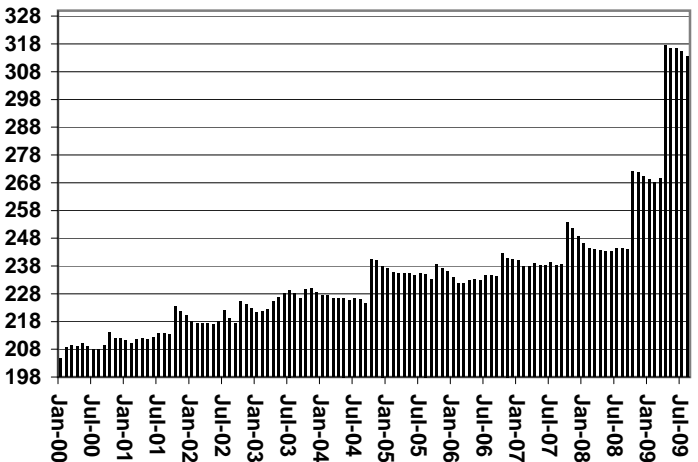


TABLE 7A
MEDICAL ASSISTANCE PROGRAM

RECIPIENTS

AUGUST 2009

	SOBRA WOMAN 133% FPL	SOBRA CHILD	ADULT W/O CHILD 100% FPL	FOSTER CARE	1931 36% FPL	FEDERAL EMERGENCY SERVICES	INFANTS	ADULT W/O CHILD 40% FPL	MEDICAL W/SPEND DOWN	SOBRA WOMAN 100% FPL	SOBRA CHILD 100% FPL	TRANSITIONAL MEDICAL T1 - T4	1931 100% FPL	YATI	OTHER	TOTAL CASES
ARIZONA	10,773	66,138	51,145	11,594	333,626	90,012	49,980	139,194	6,397	3,869	212,515	35,005	108,764	297	25,043	1,144,352
DISTRICT I																
MARICOPA	5,605	37,135	23,693	5,908	184,469	70,793	29,535	68,363	3,574	1,991	122,537	18,354	53,597	176	12,608	638,338
DISTRICT II																
PIMA	1,657	10,269	9,606	3,260	49,856	10,237	7,152	25,002	806	544	30,861	5,407	18,111	68	4,372	177,208
DISTRICT III																
APACHE	206	1,427	971	39	11,538	140	995	4,788	108	95	4,277	659	2,687	2	372	28,304
COCONINO	305	1,401	1,384	142	8,328	530	1,186	4,087	141	115	4,748	963	2,882	6	349	26,567
NAVAJO	317	2,261	1,602	138	12,803	374	1,422	6,049	181	121	5,633	1,098	3,794	6	547	36,346
YAVAPAI	415	1,805	2,286	450	7,146	1,726	1,354	4,563	298	140	5,734	1,339	3,717	11	1,072	32,056
DISTRICT IV																
LA PAZ	38	217	230	14	1,279	169	162	753	28	14	712	132	372	0	152	4,272
MOHAVE	478	2,189	2,687	283	11,285	876	1,608	6,799	437	194	7,802	1,667	4,849	2	1,399	42,555
YUMA	562	2,608	2,780	287	11,772	1,985	1,928	4,096	238	229	10,093	1,925	6,511	3	1,292	46,309
DISTRICT V																
GILA	139	697	685	94	4,506	162	564	2,412	118	41	1,982	367	1,324	0	309	13,400
PINAL	558	3,773	2,310	600	17,538	1,710	2,199	7,135	245	190	9,291	1,563	5,235	15	1,202	53,564
DISTRICT VI																
COCHISE	268	1,245	1,522	261	6,712	650	904	2,875	119	89	4,125	855	2,670	7	783	23,085
GRAHAM	106	471	516	77	2,568	58	423	1,149	49	44	1,434	268	1,008	1	138	8,310
GREENLEE	19	51	58	7	415	9	60	167	9	11	258	22	149	0	21	1,256
SANTA CRUZ	100	589	815	34	3,411	593	488	956	46	51	3,028	386	1,858	0	427	12,782

TABLE 7B

MEDICAL ASSISTANCE PROGRAM

RECIPIENTS

CHANGE FROM

JULY 2009

	SOBRA WOMAN 133% FPL	SOBRA CHILD	ADULT W/O CHILD 100% FPL	FOSTER CARE	1931 36% FPL	FEDERAL EMERGENCY SERVICES	INFANTS	ADULT W/O CHILD 40% FPL	MEDICAL W/SPEND DOWN	SOBRA WOMAN 100% FPL	SOBRA CHILD 100% FPL	TRANSITIONAL MEDICAL T1 - T4	1931 100% FPL	YATI	OTHER	TOTAL CASES
ARIZONA	(178)	269	1,578	82	4,216	(323)	561	5,823	68	(48)	3,982	(295)	2,678	(3)	197	18,607
DISTRICT I																
MARICOPA	(76)	211	776	65	2,351	(175)	322	3,206	29	1	2,475	99	1,398	(2)	153	10,833
DISTRICT II																
PIMA	(47)	149	452	22	872	(67)	141	1,141	36	(27)	476	(59)	400	(2)	24	3,511
DISTRICT III																
APACHE	10	8	(29)	0	96	16	(9)	198	9	(8)	105	(43)	94	0	13	460
COCONINO	(10)	(24)	75	1	66	(38)	24	173	7	(1)	156	7	153	(1)	2	590
NAVAJO	(1)	(19)	54	1	77	(1)	0	192	(12)	(20)	34	(18)	46	3	8	344
YAVAPAI	(8)	(23)	30	(7)	89	41	25	133	(4)	2	138	87	98	(1)	2	602
DISTRICT IV																
LA PAZ	(2)	(4)	(6)	0	13	(2)	(7)	15	(1)	2	31	12	(3)	0	(3)	45
MOHAVE	(15)	(51)	53	1	63	18	10	149	(14)	2	54	10	70	0	7	357
YUMA	(5)	(14)	95	8	461	12	10	197	16	18	176	(243)	170	0	19	920
DISTRICT V																
GILA	(4)	(22)	12	(1)	52	(14)	0	47	10	4	15	26	18	0	2	145
PINAL	(9)	39	10	(9)	15	(82)	33	253	5	(18)	35	(95)	79	0	(14)	242
DISTRICT VI																
COCHISE	(3)	27	11	0	7	(19)	13	47	(8)	(4)	168	4	40	(1)	(6)	276
GRAHAM	(9)	(11)	15	(1)	8	(1)	(1)	28	(3)	(1)	27	(13)	36	1	(10)	65
GREENLEE	0	(6)	4	0	(28)	0	(2)	5	5	2	29	2	10	0	1	22
SANTA CRUZ	1	9	26	2	74	(11)	2	39	(7)	0	63	(71)	69	0	(1)	195

TABLE 7C

MEDICAL ASSISTANCE PROGRAM

RECIPIENTS

CHANGE FROM

AUGUST 2008

	SOBRA WOMAN 133% FPL	SOBRA CHILD	ADULT W/O CHILD 100% FPL	FOSTER CARE	1931 36% FPL	FEDERAL EMERGENCY SERVICES	INFANTS	ADULT W/O CHILD 40% FPL	MEDICAL W/SPEND DOWN	SOBRA WOMAN 100% FPL	SOBRA CHILD 100% FPL	TRANSITIONAL MEDICAL T1 - T4	3E 1931 100% FPL	YATI	OTHER	TOTAL CASES
ARIZONA	(1,106)	2,482	10,691	1,050	53,925	6,630	(431)	37,059	1,256	330	42,329	(6,162)	26,739	31	834	175,657
DISTRICT I																
MARICOPA	(679)	1,404	6,107	639	35,562	6,338	(686)	21,715	831	165	26,520	(1,756)	15,101	33	659	111,953
DISTRICT II																
PIMA	(190)	503	1,630	247	6,667	(145)	90	6,036	56	(53)	4,698	(1,708)	3,548	(7)	40	21,412
DISTRICT III																
APACHE	(19)	(83)	148	(3)	734	50	(3)	547	47	24	693	(357)	490	0	(19)	2,249
COCONINO	(57)	(13)	212	24	944	(1)	20	955	49	29	980	(264)	638	3	(20)	3,499
NAVAJO	(27)	100	279	5	1,421	85	(23)	1,017	47	(4)	1,003	(306)	853	2	(43)	4,409
YAVAPAI	12	57	454	(13)	1,358	270	36	1,446	75	51	1,563	(14)	1,048	(4)	37	6,376
DISTRICT IV																
LA PAZ	(7)	(11)	26	1	73	1	(18)	156	(2)	(8)	90	(39)	54	0	13	329
MOHAVE	(25)	94	618	21	1,286	9	4	1,508	95	42	1,288	(350)	959	(1)	83	5,631
YUMA	(33)	144	252	23	993	(93)	1	641	1	31	1,425	(178)	1,140	0	(35)	4,312
DISTRICT V																
GILA	1	(8)	107	18	457	8	90	354	40	8	350	(140)	358	(1)	13	1,655
PINAL	(75)	167	422	79	2,957	18	(9)	1,727	(33)	22	2,044	(486)	1,284	4	45	8,166
DISTRICT VI																
COCHISE	26	113	161	0	397	35	9	427	19	5	584	(199)	431	2	51	2,061
GRAHAM	(33)	0	136	8	468	(5)	23	228	22	15	404	(153)	346	0	(17)	1,442
GREENLEE	6	19	23	(2)	129	4	(2)	57	2	5	144	(18)	92	0	0	459
SANTA CRUZ	(6)	(4)	116	3	479	56	37	245	7	(2)	543	(194)	397	0	27	1,704

CHART 7

MEDICAL ASSISTANCE PROGRAM

COMPARISON OF RECIPIENTS

FOR 1999, 2000, 2001, 2002, 2003, 2004, 2005, 2006, 2007, 2008, & 2009

Total Recipients

