



DEPARTMENT OF ECONOMIC SECURITY

Your Partner For A Stronger Arizona

State of Arizona

Department of Economic Security

Family Assistance Administration

Statistical Bulletin

September, 2009

Phone: (602) 542-3678

<http://www.azdes.gov/faa/Statistics.asp>

**** STATISTICAL BULLETIN ****
ARIZONA DEPARTMENT OF ECONOMIC SECURITY
FAMILY ASSISTANCE ADMINISTRATION
BOX 6123, PHOENIX, ARIZONA 85005
PHONE (602) 542-3678

SEPTEMBER 2009

THIS ISSUE OF THE STATISTICAL BULLETIN COMPARES SEPTEMBER 2009 DATA FOR EACH OF THE INDICATED PROGRAMS WITH THE INFORMATION FOR AUGUST 2009 AND SEPTEMBER 2008. STATEWIDE SUMMARIES OF ACTIVITY WITHIN EACH OF THE SPECIFIC PROGRAMS FOR THIS REPORT PERIOD ARE DISCUSSED BELOW. THE TABLES COMPARE CURRENT AND PRIOR MONTH DATA. DISTRICT AND COUNTY COMPARISONS ARE PROVIDED WITHIN THIS BULLETIN

TANF SUMMARY

COMPARING TO AUGUST 2009, SEPTEMBER 2009 CASES INCREASED BY 319 (0.81%) TO 39,639. RECIPIENTS INCREASED BY 871 (1.01%) TO 86,749. PAYMENTS INCREASED BY \$63,209 (0.75%) TO \$8,494,098. AVERAGE PAYMENT PER CASE DECREASED BY \$0.13 (0.06%) TO \$214.29. PAYMENT PER RECIPIENT DECREASED BY \$0.25 (0.25%) TO \$97.92.

COMPARING TO SEPTEMBER 2008, SEPTEMBER 2009 CASES INCREASED BY 2,015 (5.36%). RECIPIENTS INCREASED BY 5,181 (6.35%). TOTAL PAYMENTS DECREASED BY \$1,403,104 (14.18%). THE AVERAGE PAYMENT PER CASE DECREASED BY \$48.77 (18.54%). THE AVERAGE PAYMENT PER RECIPIENT DECREASED BY \$23.42 (19.30%).

CASH ASSISTANCE (CA)

COMPARING TO AUGUST 2009, SEPTEMBER 2009 CASES INCREASED BY 286 (0.77%) TO 37,195. RECIPIENTS INCREASED BY 681 (0.86%) TO 79,630. PAYMENTS INCREASED BY \$46,996 (0.59%) TO \$8,015,788. AVERAGE PAYMENT PER CASE DECREASED BY \$0.39 (0.18%) TO \$215.51. PAYMENT PER RECIPIENT DECREASED BY \$0.28 (0.28%) TO \$100.66.

COMPARING TO SEPTEMBER 2008, SEPTEMBER 2009 CASES INCREASED BY 1,325 (3.69%). RECIPIENTS INCREASED BY 3,383 (4.44%). TOTAL PAYMENTS DECREASED BY \$1,465,796 (15.46%). THE AVERAGE PAYMENT PER CASE DECREASED BY \$48.82 (18.47%). THE AVERAGE PAYMENT PER RECIPIENT DECREASED BY \$23.69 (19.05%).

CASH ASSISTANCE UNEMPLOYED PARENT PROGRAM (CA-UP)

COMPARING TO AUGUST 2009, SEPTEMBER 2009 CASES INCREASED BY 64 (4.56%) TO 1,466. RECIPIENTS INCREASED BY 271 (5.52%) TO 5,184. PAYMENTS INCREASED BY \$17,398 (4.42%) TO \$411,226. AVERAGE PAYMENT PER CASE DECREASED BY \$0.39 (0.14%) TO \$280.51. PAYMENT PER RECIPIENT DECREASED BY \$0.83 (1.04%) TO \$79.33.

COMPARING TO SEPTEMBER 2008, SEPTEMBER 2009 CASES INCREASED BY 446 (43.73%). RECIPIENTS INCREASED BY 1,375 (36.10%). TOTAL PAYMENTS INCREASED BY \$47,767 (13.14%). THE AVERAGE PAYMENT PER CASE DECREASED BY \$75.83 (21.28%). THE AVERAGE PAYMENT PER RECIPIENT DECREASED BY \$16.09 (16.86%).

CASH ASSISTANCE WITH GRANT UNDER \$100 (CA-MOE)

COMPARING TO AUGUST 2009, SEPTEMBER 2009 CASES DECREASED BY 31 (3.26%) TO 920. RECIPIENTS DECREASED BY 79 (4.24%) TO 1,785. PAYMENTS DECREASED BY \$954 (1.47%) TO \$63,890. AVERAGE PAYMENT PER CASE INCREASED BY \$1.26 (1.85%) TO \$69.45. AVERAGE PAYMENT PER RECIPIENT INCREASED BY \$1.00 (2.87%) TO \$35.79.

COMPARING TO SEPTEMBER 2008, SEPTEMBER 2009 CASES INCREASED BY 210 (29.58%). RECIPIENTS INCREASED BY 340 (23.53%). TOTAL PAYMENTS INCREASED BY \$13,145 (25.90%). THE AVERAGE PAYMENT PER CASE DECREASED BY \$2.02 (2.83%). THE AVERAGE PAYMENT PER RECIPIENT INCREASED BY \$0.67 (1.91%).

CASH ASSISTANCE UNEMPLOYED PARENT PROGRAM WITH GRANT UNDER \$100 (CA-UP-MOE) NEW PROGRAM STARTING 7/01

COMPARING TO AUGUST 2009, SEPTEMBER 2009 CASES INCREASED BY 0 (0.00%) TO 58. RECIPIENTS DECREASED BY 2 (1.32%) TO 150. PAYMENTS DECREASED BY \$231 (6.74%) TO \$3,194. AVERAGE PAYMENT PER CASE DECREASED BY \$3.98 (6.74%) TO \$55.07. PAYMENT PER RECIPIENT DECREASED BY \$1.24 (5.50%) TO \$21.29.

COMPARING TO SEPTEMBER 2008, SEPTEMBER 2009 CASES INCREASED BY 34 (141.67%). RECIPIENTS INCREASED BY 83 (2.42%). TOTAL PAYMENTS INCREASED BY \$1,780 (125.88%). THE AVERAGE PAYMENT PER CASE DECREASED BY \$3.85 (6.53%). THE AVERAGE PAYMENT PER RECIPIENT INCREASED BY \$0.19 (0.90%).

TUBERCULOSIS CONTROL PROGRAM (TC)

COMPARING TO AUGUST 2009, SEPTEMBER 2009 CASES INCREASED BY 0 (0.00%) TO 2. RECIPIENTS INCREASED BY 0 (0.00%) TO 2. PAYMENTS INCREASED BY \$0 (0.00%) TO \$281. AVERAGE PAYMENT PER CASE INCREASED BY \$73.79 (52.52%) TO \$214.29. AVERAGE PAYMENT PER RECIPIENT INCREASED BY \$0.00 (0.00%) TO \$140.50.

COMPARING TO SEPTEMBER 2008, SEPTEMBER 2009 CASES DECREASED BY 5 (71.43%). RECIPIENTS DECREASED BY 5 (71.43%). TOTAL PAYMENTS DECREASED BY \$540 (65.77%). THE AVERAGE PAYMENT PER CASE INCREASED BY \$97.00 (82.71%). THE AVERAGE PAYMENT PER RECIPIENT INCREASED BY \$23.21 (19.79%).

SUPPLEMENTAL NUTRITION ASSISTANCE PROGRAM (SNAP)

COMPARING TO AUGUST 2009, SEPTEMBER 2009 SUPPLEMENTAL NUTRITION ASSISTANCE HOUSEHOLDS INCREASED BY 11,210 (2.88%) TO 400,307. PERSONS RECEIVING SUPPLEMENTAL NUTRITION ASSISTANCE INCREASED BY 22,217 (2.42%) TO 941,995. TOTAL COUPON ISSUANCE INCREASED BY \$2,507,583 (2.06%) TO \$124,495,866. THE AVERAGE HOUSEHOLD ALLOTMENT DECREASED BY \$2.52 (0.80%) TO \$311.00. THE AVERAGE ALLOTMENT PER PERSON DECREASED BY \$0.47 (0.35%) TO \$132.16.

COMPARING TO SEPTEMBER 2008, SEPTEMBER 2009 SUPPLEMENTAL NUTRITION ASSISTANCE HOUSEHOLDS INCREASED BY 117,416 (41.51%). PERSONS RECEIVING SUPPLEMENTAL NUTRITION ASSISTANCE INCREASED BY 256,089 (37.34%). TOTAL COUPON ISSUANCE INCREASED BY \$55,432,400 (80.26%). THE AVERAGE ALLOTMENT PER HOUSEHOLD INCREASED BY \$66.87 (27.39%). THE AVERAGE ALLOTMENT PER PERSON INCREASED BY \$31.47 (31.26%).

MEDICAL ASSISTANCE PROGRAM (MA) NEW TABLE INCLUDES PROP. 204 CATEGORIES

COMPARING TO AUGUST 2009, SEPTEMBER 2009 TOTAL RECIPIENTS TOTAL RECIPIENTS INCREASED BY 13,422 (1.17%). SOBRA WOMEN AT 140% FPL DECREASED BY 223 (2.07%). SOBRA CHILDREN INCREASED BY 124 (0.19%). ADULTS W/O CHILD AT 100% INCREASED BY 1,775 (3.47%). FOSTER CARE DECREASED BY 77 (0.66%). 1931 AT 36% FPL INCREASED BY 655 (0.20%). EMERGENCY SERVICES DECREASED BY 487 (0.54%). INFANTS INCREASED BY 183 (0.37%). ADULT W/O CHILD AT 140% INCREASED BY 4,679 (3.36%). MEDICAL W/SPEND DOWN DECREASED BY 177 (2.77%). SOBRA WOMAN AT 100% INCREASED BY 15 (0.39%). SOBRA CHILD AT 100% INCREASED BY 3,642 (1.71%). TRANSITIONAL MEDICAL INCREASED BY 891 (2.55%). 1931 AT 100% INCREASED BY 2,188 (2.01%). YATI INCREASED BY 13 (4.38%). ALL OTHER CATEGORIES INCREASED BY 221 (0.88%).

COMPARING TO SEPTEMBER 2008, SEPTEMBER 2009 TOTAL RECIPIENTS TOTAL RECIPIENTS INCREASED BY 174,805 (17.78%). SOBRA WOMEN AT 140% FPL DECREASED BY 1,437 (11.99%). SOBRA CHILDREN INCREASED BY 2,238 (3.50%). ADULTS W/O CHILD AT 100% INCREASED BY 11,576 (28.00%). FOSTER CARE INCREASED BY 878 (8.25%). 1931 AT 36% FPL INCREASED BY 50,424 (17.76%). EMERGENCY SERVICES INCREASED BY 5,853 (7.00%). INFANTS DECREASED BY 79 (0.16%). ADULT W/O CHILD AT 140% INCREASED BY 39,703 (38.11%). MEDICAL W/SPEND DOWN INCREASED BY 690 (12.48%). SOBRA WOMAN AT 100% INCREASED BY 215 (5.86%). SOBRA CHILD AT 100% INCREASED BY 43,294 (25.05%). TRANSITIONAL MEDICAL DECREASED BY 6,431 (15.19%). 1931 AT 100% INCREASED BY 27,286 (32.61%). YATI INCREASED BY 49 (18.77%). ALL OTHER CATEGORIES INCREASED BY 546 (2.21%).

TANF SUMMARY

TABLES 1, 1A, 1B, & 1C: ARIZONA 1

	SEPTEMBER 2009							AUGUST 2009			CHANGE FROM SEPTEMBER 2008		
	FAMILIES (CASES)	PERSONS (RECIP.)	ADULTS	CHILDREN	TOTAL PAYMENTS	AVERAGE PAYMENT/ CASE	AVERAGE PAYMENT/ RECIP.	FAMILIES (CASES)	PERSONS (RECIP.)	TOTAL PAYMENTS	FAMILIES (CASES)	PERSONS (RECIP.)	TOTAL PAYMENTS
	ARIZONA	39,639	86,749	21,632	65,117	8,494,098	214.29	97.92	319	871	63,209	2,015	5,181
DISTRICT I													
MARICOPA	24,045	53,391	12,678	40,713	5,125,733	213.17	96.00	362	866	71,885	2,611	6,186	(562,786)
DISTRICT II													
PIMA	6,679	13,893	3,659	10,234	1,406,673	210.61	101.25	1	58	1,513	(173)	(272)	(366,883)
DISTRICT III													
APACHE	1	5	2	3	392	392.00	78.40	(4)	(3)	(255)	(88)	(180)	(22,841)
COCONINO	241	513	125	388	49,185	204.09	95.88	3	1	220	1	(6)	(10,782)
NAVAJO	1,463	3,814	1,172	2,642	398,393	272.31	104.46	7	64	3,829	154	607	35,590
YAVAPAI	703	1,373	304	1,069	137,458	195.53	100.12	(7)	3	663	13	53	(30,222)
DISTRICT IV													
LA PAZ	190	421	132	289	39,017	205.35	92.68	10	30	1,512	(23)	(23)	(14,382)
MOHAVE	1,224	2,511	701	1,810	246,828	201.66	98.30	(2)	5	(1,837)	(132)	(354)	(102,152)
YUMA	1,023	2,210	487	1,723	216,420	211.55	97.93	(12)	(21)	(814)	(111)	(317)	(81,167)
DISTRICT V													
GILA	726	1,533	546	987	175,367	241.55	114.39	23	35	3,045	(19)	5	(16,712)
PINAL	1,965	4,351	1,154	3,197	407,466	207.36	93.65	(25)	(61)	(8,667)	82	127	(88,997)
DISTRICT VI													
COCHISE	792	1,552	362	1,190	163,406	206.32	105.29	(29)	(88)	(8,372)	(230)	(473)	(100,589)
GRAHAM	298	586	179	407	67,042	224.97	114.41	3	9	1,550	(40)	(76)	(17,430)
GREENLEE	31	62	13	49	6,156	198.58	99.29	(3)	(8)	(1,072)	3	14	(459)
SANTA CRUZ	258	534	118	416	54,562	211.48	102.18	(8)	(19)	9	(33)	(110)	(23,292)

1/EXCLUDES: PRIOR MONTH NET TOTALS OF 2,180 CASES; 5,298 RECIPIENTS; \$378,978.
 GRANT DIVERSION TOTALS OF: 686 CASES; \$539,183.
 ZERO PAY TOTALS OF 1,212 CASES; 3,776 RECIPIENTS.
 RRP TOTALS OF 675 CASES; 1,191 RECIPIENTS; \$152,991.
 CA CHILD ONLY TOTALS OF 19,333 CASES; 32,428 RECIPIENTS;
 \$3,713,245.

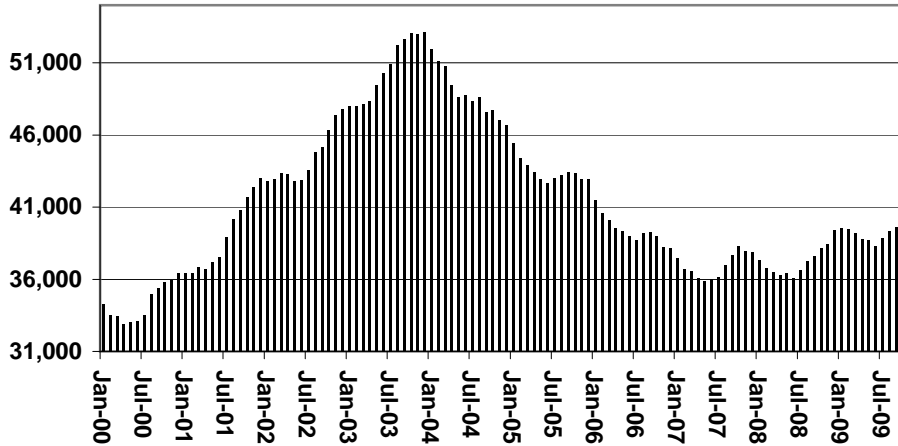
	CURRENT MO. CASES	CURRENT MO. RECIP.	CURRENT MO. DOLLARS	PRIOR MO. CASES	PRIOR MO. RECIP.	PRIOR MO. DOLLARS
PASQUAYAOUI	381	1,132	\$119,224	29	88	8,188
WM APACHE	801	2,332	\$251,401	10	25	1,798
SALT RIVER	75	231	\$22,329	8	26	1,597
SAN CARLOS	620	1,362	\$161,982	20	40	2,931
HOPI	112	322	\$24,765	13	39	1,605
TOTAL	1,989	5,379	\$579,701	80	218	\$16,119

TANF SUMMARY

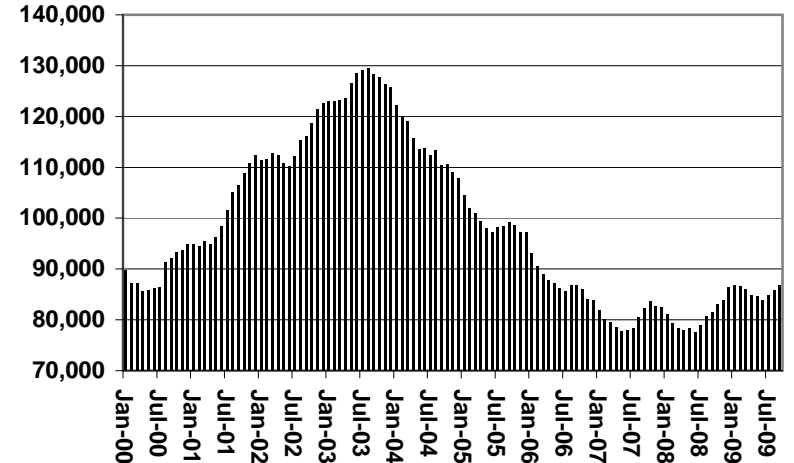
TABLES 1, 1A, 1B, & 1C

COMPARISON OF CASES, RECIPIENTS, PAYMENTS & AVERAGE PAYMENTS
FOR 2000, 2001, 2002, 2003, 2004, 2005, 2006, 2007, 2008, & 2009

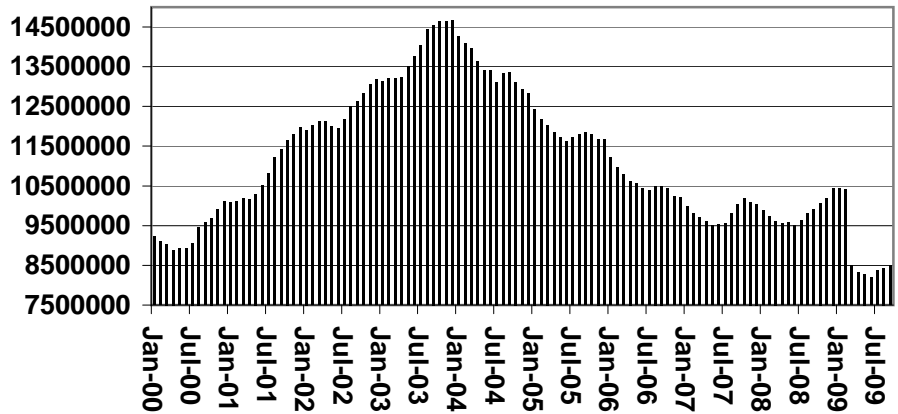
Cases



Recipients



Payments



Average Payments Per Recipient

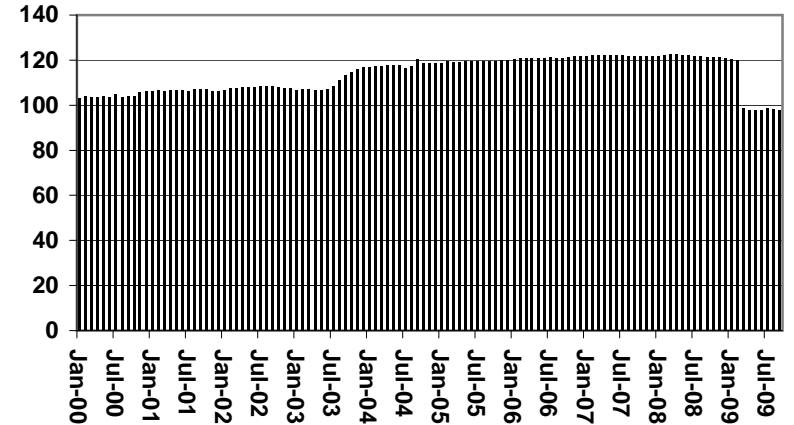


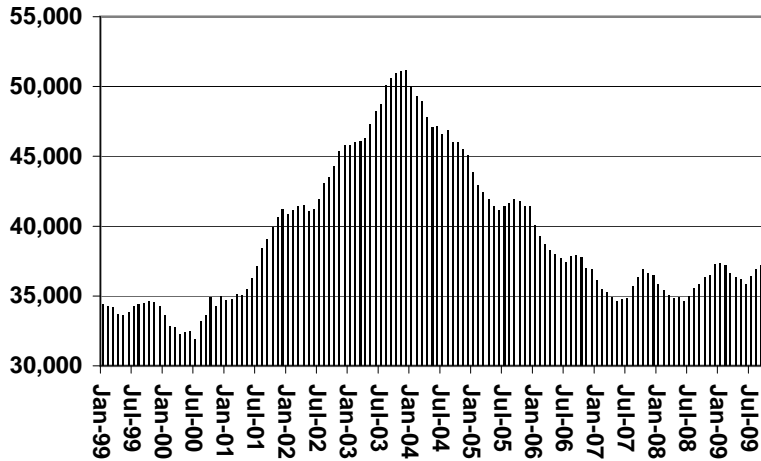
CHART 1

CASH ASSISTANCE PROGRAM

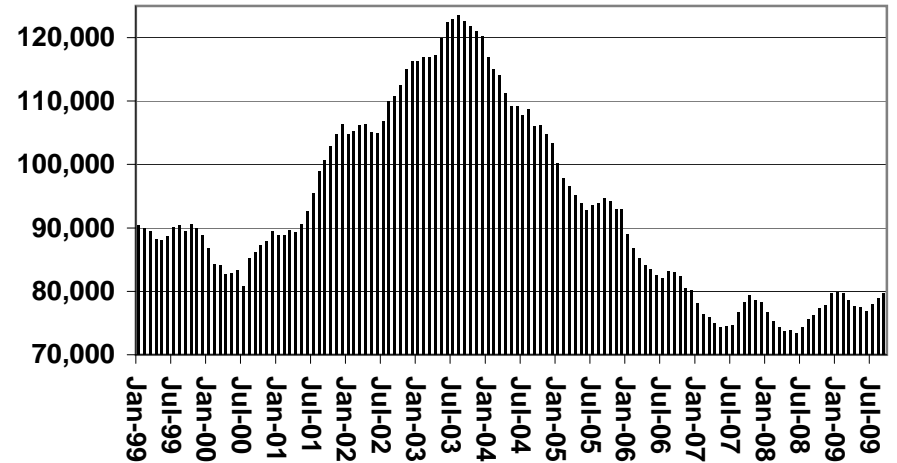
COMPARISON OF CASES, RECIPIENTS, PAYMENTS & AVERAGE PAYMENTS

FOR 1999, 2000, 2001, 2002, 2003, 2004, 2005, 2006, 2007, 2008, & 2009

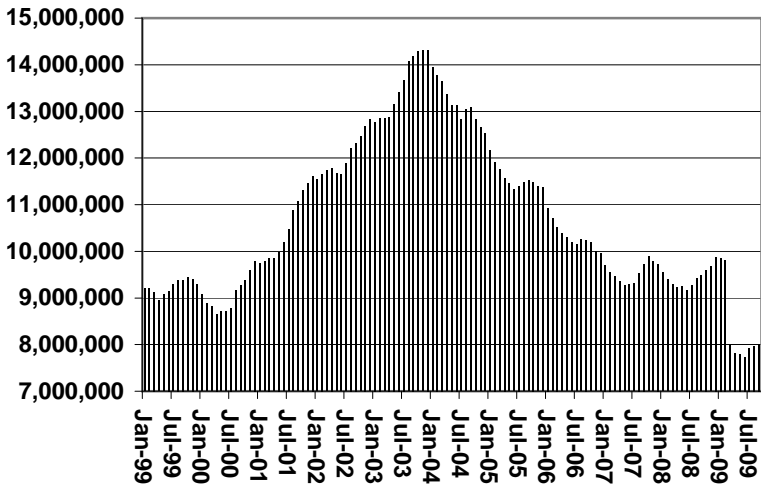
Cases



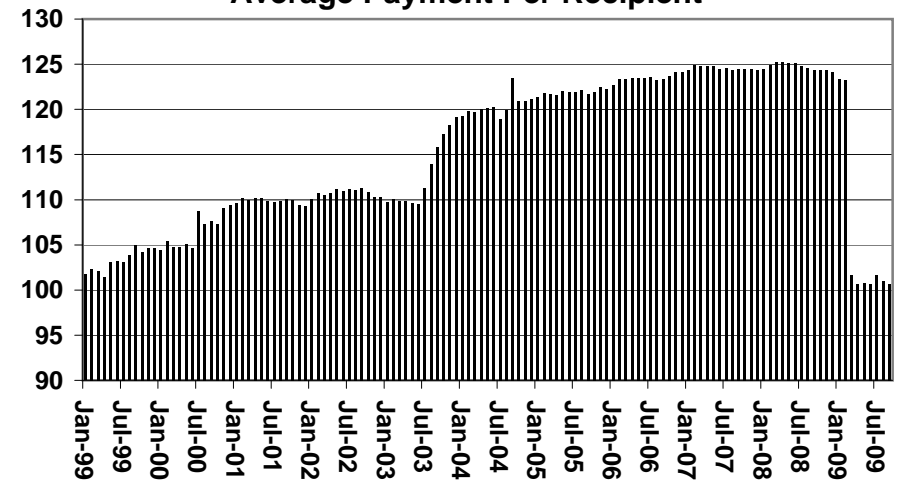
Recipients



Payments



Average Payment Per Recipient



**TABLE 1A
CA-UP**

CASH ASSISTANCE UNEMPLOYED PARENT PROGRAM: ARIZONA 1

	SEPTEMBER 2009							CHANGE FROM			AUGUST 2009			SEPTEMBER 2008		
	FAMILIES (CASES)	PERSONS (RECIP.)	ADULTS	CHILDREN	TOTAL PAYMENTS	AVERAGE PAYMENT/ CASE	AVERAGE PAYMENT/ RECIP.	FAMILIES (CASES)	PERSONS (RECIP.)	TOTAL PAYMENTS	FAMILIES (CASES)	PERSONS (RECIP.)	TOTAL PAYMENTS			
ARIZONA	1,466	5,184	1,908	3,276	411,226	280.51	79.33	64	271	17,398	446	1,375	47,767			
DISTRICT I																
MARICOPA	988	3,366	1,103	2,263	270,382	273.67	80.33	43	171	9,896	439	1,377	76,788			
DISTRICT II																
PIMA	266	1,034	441	593	80,483	302.57	77.84	24	116	8,115	98	396	20,599			
DISTRICT III																
APACHE	1	5	2	3	392	392.00	78.40	1	5	392	(5)	(19)	(1,724)			
COCONINO	3	13	4	9	1,062	354.00	81.69	(1)	(2)	(221)	(4)	(12)	(1,171)			
NAVAJO	24	86	44	42	7,817	325.71	90.90	2	10	1,077	(53)	(242)	(23,701)			
YAVAPAI	13	45	20	25	3,597	276.69	79.93	(1)	(1)	1	8	33	2,421			
DISTRICT IV																
LA PAZ	7	26	12	14	1,918	274.00	73.77	2	10	477	2	8	(14)			
MOHAVE	25	99	47	52	7,720	308.80	77.98	(2)	(3)	(340)	(29)	(108)	(12,096)			
YUMA	32	114	49	65	9,091	284.09	79.75	5	12	1,499	(6)	(31)	(4,035)			
DISTRICT V																
GILA	2	8	4	4	361	180.50	45.13	(2)	(8)	(525)	(1)	(1)	(448)			
PINAL	93	344	161	183	25,013	268.96	72.71	(1)	(9)	(587)	12	17	(4,420)			
DISTRICT VI																
COCHISE	5	21	10	11	1,732	346.40	82.48	(7)	(30)	(2,459)	(10)	(25)	(2,312)			
GRAHAM	2	6	2	4	453	226.50	75.50	0	0	(103)	(2)	(9)	(765)			
GREENLEE	0	0	0	0	0	0.00	0.00	0	0	0	0	0	0			
SANTA CRUZ	5	17	9	8	1,205	241.00	70.88	1	0	176	(3)	(9)	(1,355)			

1/EXCLUDES: PRIOR MONTH NET TOTALS OF: 143 CASES; 561 RECIPIENTS; \$54,564.
GRANT DIVERSION TOTALS OF: 0 CASES; \$0.
ZERO PAY TOTALS OF 96 CASES; 420 RECIPIENTS.

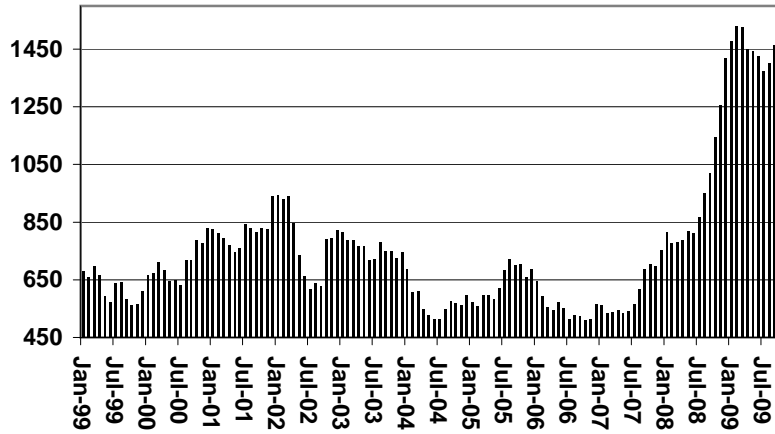
	CURRENT MO. CASES	CURRENT MO. RECIP.	CURRENT MO. DOLLARS	PRIOR MO. CASES	PRIOR MO. RECIP.	PRIOR MO. DOLLARS
PASQUAYUAQUI	30	133	11,354	2	6	427
WM APACHE	6	28	2,536	0	0	0
SALT RIVER	0	0	0	0	0	0
SAN CARLOS	0	0	0	0	0	0
HOPÍ	1	5	489	0	0	0
TOTAL	37	166	14,379	2	6	427

CASES WITH GRANT UNDER \$100 (SEE TABLE 1C).

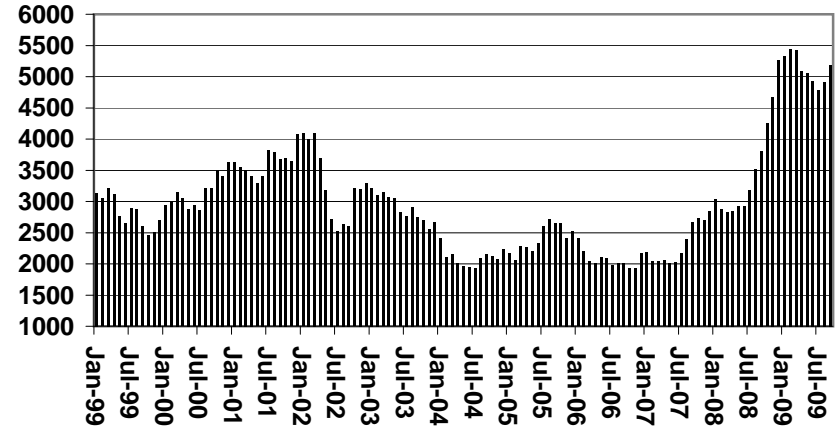
CHART 1A

CASH ASSISTANCE UNEMPLOYED PARENT PROGRAM COMPARISON OF CASES, RECIPIENTS, PAYMENTS & AVERAGE PAYMENTS FOR 1999, 2000, 2001, 2002, 2003, 2004, 2005, 2006, 2007, 2008, & 2009

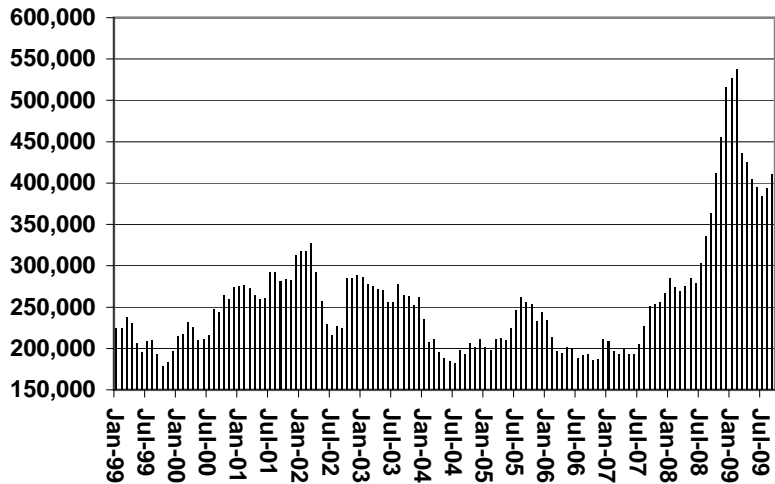
Cases



Recipients



Payments



Average Payment Per Recipient

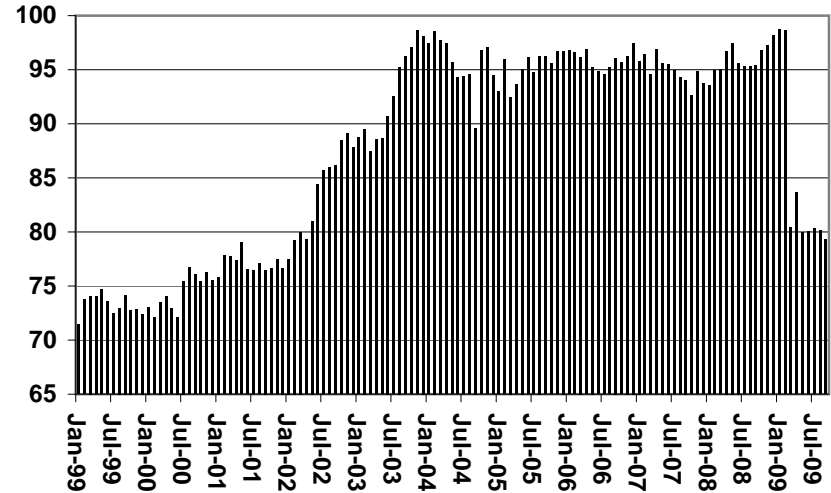


TABLE 1B 1/

**CASH ASSISTANCE: ARIZONA
CASES WITH GRANT UNDER \$100**

CHANGE FROM

	SEPTEMBER 2009							AUGUST 2009			SEPTEMBER 2008		
	FAMILIES (CASES)	PERSONS (RECIP.)	ADULTS	CHILDREN	TOTAL PAYMENTS	AVERAGE PAYMENT/ CASE	AVERAGE PAYMENT/ RECIP.	FAMILIES (CASES)	PERSONS (RECIP.)	TOTAL PAYMENTS	FAMILIES (CASES)	PERSONS (RECIP.)	TOTAL PAYMENTS
ARIZONA	920	1,785	444	1,341	63,890	69.45	35.79	(31)	(79)	(954)	210	340	13,145
DISTRICT I													
MARICOPA	557	1,108	241	867	36,603	65.71	33.04	(28)	(70)	(1,807)	135	228	7,836
DISTRICT II													
PIMA	148	260	78	182	11,083	74.89	42.63	(7)	(23)	(675)	33	36	2,531
DISTRICT III													
APACHE	0	0	0	0	0	0.00	0.00	(2)	(4)	(99)	(2)	(2)	(185)
COCONINO	4	6	3	3	396	99.00	66.00	0	(1)	116	(3)	(9)	(142)
NAVAJO	15	33	8	25	970	64.67	29.39	(4)	(8)	(166)	5	12	199
YAVAPAI	28	51	15	36	2,135	76.25	41.86	(3)	(5)	306	10	21	702
DISTRICT IV													
LA PAZ	5	12	3	9	534	106.80	44.50	1	3	74	2	6	231
MOHAVE	43	93	29	64	3,015	70.12	32.42	10	20	843	8	22	350
YUMA	16	33	12	21	1,688	105.50	51.15	(9)	(10)	(556)	(9)	(18)	(569)
DISTRICT V													
GILA	9	11	2	9	590	65.56	53.64	(1)	(3)	8	1	(2)	(25)
PINAL	57	103	33	70	3,981	69.84	38.65	15	29	1,243	21	23	1,297
DISTRICT VI													
COCHISE	24	45	9	36	2,038	84.92	45.29	1	4	117	4	9	526
GRAHAM	9	20	8	12	515	57.22	25.75	0	0	(70)	5	15	354
GREENLEE	0	0	0	0	0	0.00	0.00	0	0	0	(1)	(3)	(73)
SANTA CRUZ	5	10	3	7	342	68.40	34.20	(4)	(11)	(288)	1	2	113

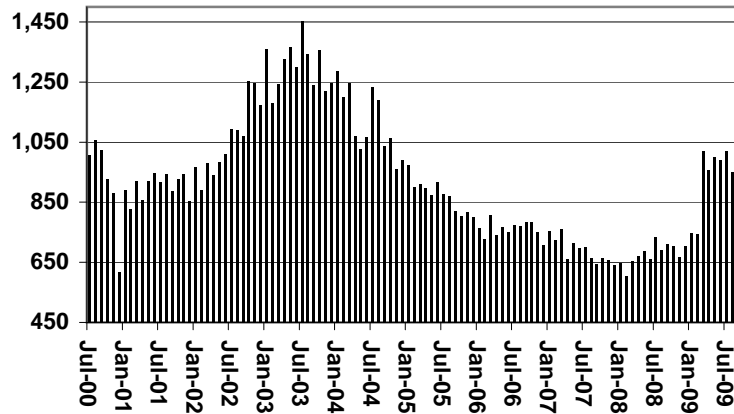
EXCLUDES: PRIOR MONTH NET TOTALS OF 955 CASES; 1,966 RECIPIENTS; \$59,881.

CHART 1B

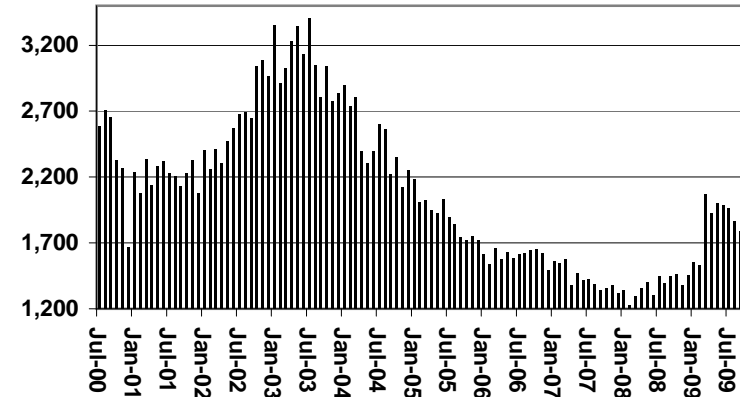
CASH ASSISTANCE PROGRAM CASES WITH GRANT UNDER \$100

FOR 1999, 2000, 2001, 2002, 2003, 2004, 2005, 2006, 2007, 2008, & 2009

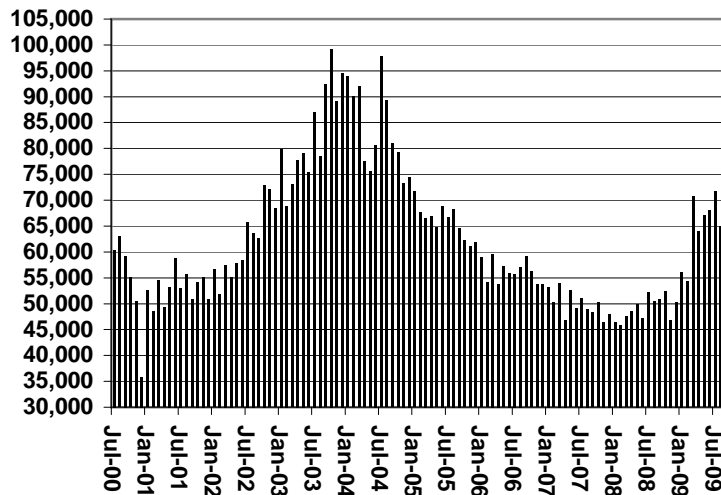
Cases



Recipients



Payments



Average Payment Per Recipient

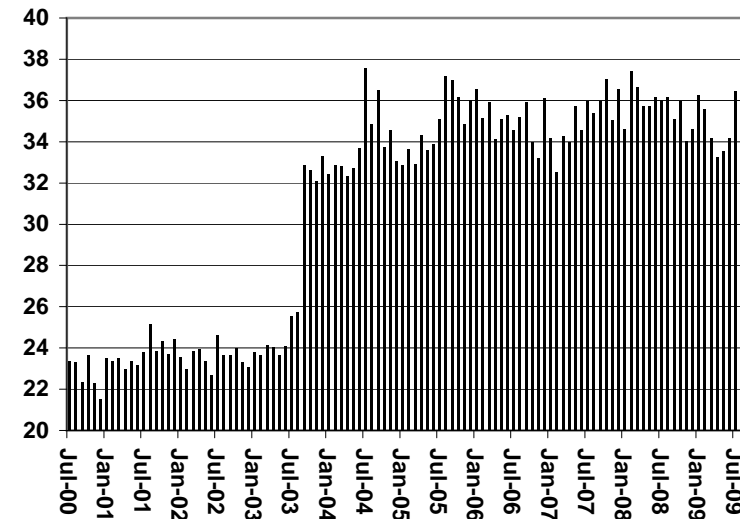


TABLE 1C 1/

CASH ASSISTANCE UNEMPLOYED PARENT PROGRAM: ARIZONA
CASES WITH GRANT UNDER \$100

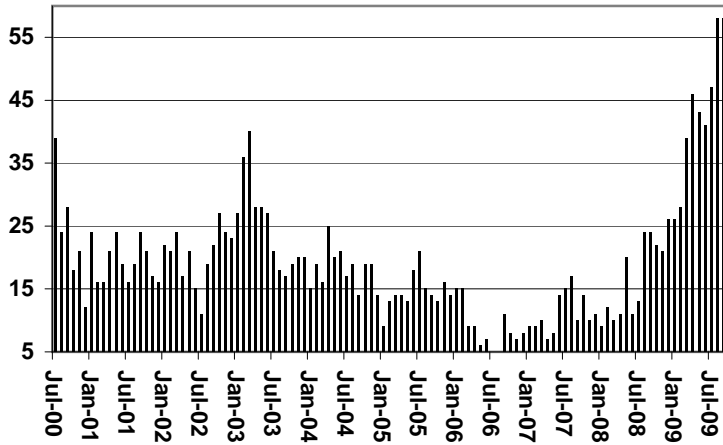
	CHANGE FROM												
	SEPTEMBER 2009							AUGUST 2009			SEPTEMBER 2008		
	FAMILIES (CASES)	PERSONS (RECIP.)	ADULTS	CHILDREN	TOTAL PAYMENTS	AVERAGE PAYMENT/ CASE	AVERAGE PAYMENT/ RECIP.	FAMILIES (CASES)	PERSONS (RECIP.)	TOTAL PAYMENTS	FAMILIES (CASES)	PERSONS (RECIP.)	TOTAL PAYMENTS
ARIZONA	58	150	36	114	3,194	55.07	21.29	0	(2)	(231)	34	83	1,780
DISTRICT I													
MARICOPA	48	123	25	98	2,629	54.77	21.37	1	0	(6)	32	86	1,660
DISTRICT II													
PIMA	5	16	7	9	288	57.60	18.00	2	12	90	1	0	119
DISTRICT III													
APACHE	0	0	0	0	0	0.00	0.00	0	0	0	0	0	0
COCONINO	0	0	0	0	0	0.00	0.00	0	0	0	0	0	0
NAVAJO	0	0	0	0	0	0.00	0.00	0	0	0	0	0	0
YAVAPAI	2	3	0	3	104	52.00	34.67	0	(1)	(66)	1	2	7
DISTRICT IV													
LA PAZ	0	0	0	0	0	0.00	0.00	0	0	0	(1)	(5)	(24)
MOHAVE	0	0	0	0	0	0.00	0.00	(1)	(3)	(57)	(1)	(5)	(77)
YUMA	0	0	0	0	0	0.00	0.00	(1)	(5)	(80)	(1)	(3)	(78)
DISTRICT V													
GILA	3	8	4	4	173	57.67	21.63	1	1	20	3	8	173
PINAL	0	0	0	0	0	0.00	0.00	(1)	(3)	(88)	0	0	0
	3	8	4	4	173	57.67	21.63	2	4	108	3	8	173
DISTRICT VI													
COCHISE	0	0	0	0	0	0.00	0.00	(1)	(3)	(81)	0	0	0
GRAHAM	0	0	0	0	0	0.00	0.00	(1)	(3)	(51)	0	0	0
GREENLEE	0	0	0	0	0	0.00	0.00	0	0	0	0	0	0
SANTA CRUZ	0	0	0	0	0	0.00	0.00	0	0	0	0	0	0

EXCLUDES: PRIOR MONTH NET TOTALS OF 89 CASES; 293 RECIPIENTS; \$4,692.

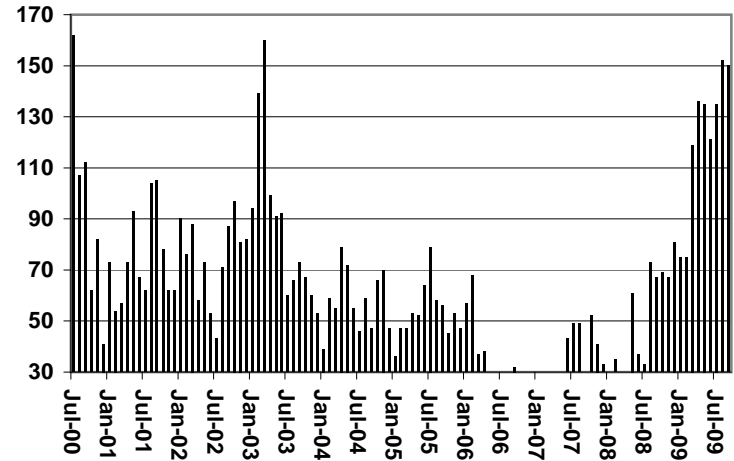
CHART 1C

CASH ASSISTANCE UNEMPLOYED PARENT PROGRAM CASES WITH GRANT UNDER \$100 FOR 1999, 2000, 2001, 2002, 2003, 2004, 2005, 2006, 2007, 2008, & 2009

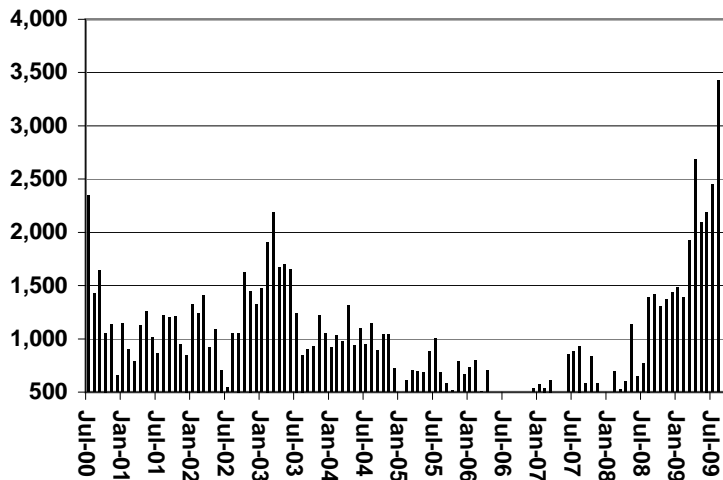
Cases



Recipients



Payments



Average Payment Per Recipient

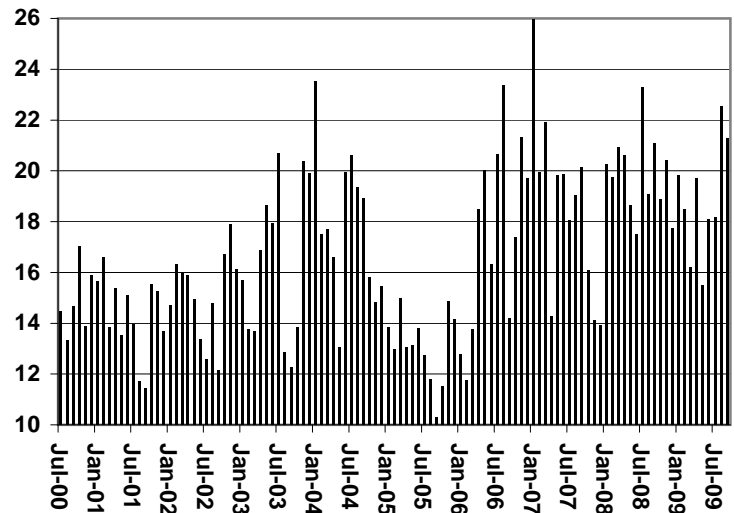


TABLE 4
TUBERCULOSIS CONTROL: ARIZONA 1/

CHANGE FROM

	SEPTEMBER 2009					AUGUST 2009			SEPTEMBER 2008		
	NUMBER OF CASES	PERSONS (RECIP.)	TOTAL PAYMENTS	AVERAGE PAYMENT/ CASE	AVERAGE PAYMENT/ RECIP.	NUMBER OF CASES	PERSONS (RECIP.)	TOTAL PAYMENTS	NUMBER OF CASES	PERSONS (RECIP.)	TOTAL PAYMENTS
ARIZONA	2	2	281	140.50	140.50	0	0	0	(5)	(5)	(540)
DISTRICT I											
MARICOPA	1	1	173	173.00	173.00	0	0	0	(6)	(6)	(648)
DISTRICT II											
PIMA	0	0	0	0.00	0.00	0	0	0	0	0	0
DISTRICT III											
APACHE	0	0	0	0.00	0.00	0	0	0	0	0	0
COCONINO	0	0	0	0.00	0.00	0	0	0	0	0	0
NAVAJO	0	0	0	0.00	0.00	0	0	0	0	0	0
YAVAPAI											
DISTRICT IV											
LA PAZ	0	0	0	0.00	0.00	0	0	0	0	0	0
MOHAVE	0	0	0	0.00	0.00	0	0	0	0	0	0
YUMA											
DISTRICT V											
GILA	0	0	0	0.00	0.00	0	0	0	0	0	0
PINAL	0	0	0	0.00	0.00	0	0	0	0	0	0
DISTRICT VI											
COCHISE	1	1	108	108.00	108.00	0	0	0	1	1	108
GRAHAM	1	1	108	108.00	108.00	0	0	0	1	1	108
GREENLEE	0	0	0	0.00	0.00	0	0	0	0	0	0
SANTA CRUZ	0	0	0	0.00	0.00	0	0	0	0	0	0

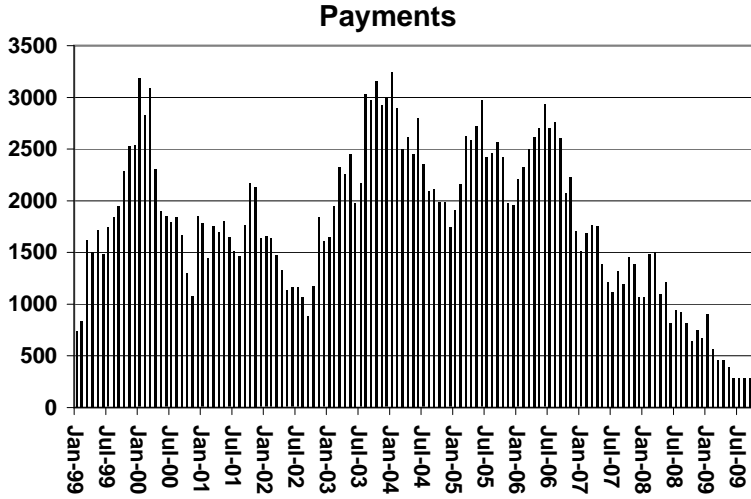
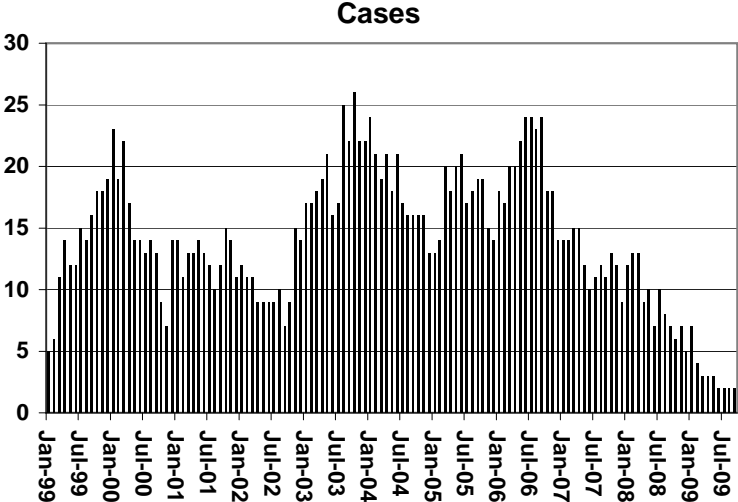
1/EXCLUDES: PRIOR MONTH NET TOTALS OF : 0 CASES; 0 RECIPIENTS; \$0.

CHART 4

TUBERCULOSIS CONTROL PROGRAM

COMPARISON OF CASES, PAYMENTS & AVERAGE PAYMENTS

FOR 1999, 2000, 2001, 2002, 2003, 2004, 2005, 2006, 2007, 2008, & 2009



Average Payment Per Case

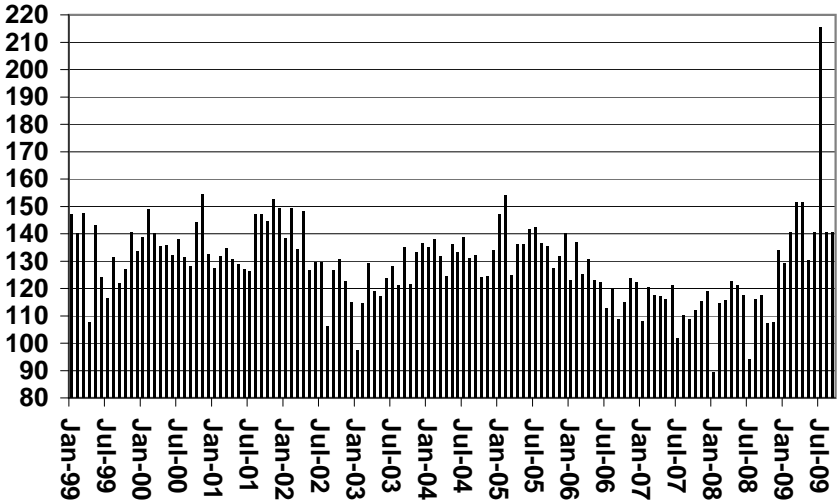


TABLE 6
SUPPLEMENTAL NUTRITION ASSISTANCE PROGRAM: ARIZONA 1

	CHANGE FROM										
	SEPTEMBER 2009					AUGUST 2009			SEPTEMBER 2008		
	HOUSEHOLDS	PERSONS	TOTAL COUPON ISSUANCE	AVERAGE ALLOT./ HOUSEHOLD	AVERAGE ALLOT./ PERSON	HOUSEHOLDS	PERSONS	TOTAL COUPON ISSUANCE	HOUSEHOLDS	PERSONS	TOTAL COUPON ISSUANCE
ARIZONA	400,307	941,995	124,495,866	311.00	132.16	11,210	22,217	2,507,583	117,416	256,089	55,432,400
DISTRICT I											
MARICOPA	214,429	505,243	68,001,975	317.13	134.59	6,975	14,245	1,732,071	70,210	153,401	31,848,250
DISTRICT II											
PIMA	69,164	151,305	20,221,496	292.37	133.65	1,888	3,500	391,871	19,234	38,009	8,781,572
DISTRICT III											
APACHE	6,788	20,591	2,562,100	377.45	124.43	113	154	(3,829)	165	631	610,510
COCONINO	8,659	23,726	2,969,663	342.96	125.16	278	569	63,912	2,562	6,087	1,319,812
NAVAJO	14,103	37,850	4,763,827	337.79	125.86	192	188	15,855	3,808	9,227	2,000,646
YAVAPAI	12,326	25,439	3,275,568	265.74	128.76	412	755	65,190	4,169	8,601	1,625,290
DISTRICT IV											
LA PAZ	1,737	3,698	487,061	280.40	131.71	31	91	5,141	323	662	177,098
MOHAVE	16,969	34,615	4,544,232	267.80	131.28	406	828	81,276	3,864	7,477	1,769,534
YUMA	14,465	38,711	4,687,658	324.07	121.09	429	1,096	118,641	2,785	7,156	1,803,585
DISTRICT V											
GILA	24,842	61,084	8,026,311	323.09	131.40	203	284	12,520	6,557	15,730	3,456,197
PINAL	5,234	11,850	1,577,562	301.41	133.13	229	534	63,696	1,306	2,802	661,128
	19,608	49,234	6,448,749	328.88	130.98	(26)	(250)	(51,176)	5,251	12,928	2,795,069
DISTRICT VI											
COCHISE	16,825	39,733	4,955,975	294.56	124.73	283	507	24,935	3,739	9,108	2,039,906
GRAHAM	9,255	20,191	2,552,943	275.84	126.44	130	204	9,469	1,458	2,980	893,742
GREENLEE	2,831	6,915	861,013	304.14	124.51	40	75	567	783	2,095	391,477
SANTA CRUZ	492	1,181	141,284	287.16	119.63	(32)	(109)	(12,433)	256	704	94,851
	4,247	11,446	1,400,735	329.82	122.38	145	337	27,332	1,242	3,329	659,836

1/EXCLUDES: PRIOR MONTH NET TOTALS OF : 12,350 CASES; 31,212 RECIPIENTS; \$2,246,597.

AGED CANCELATIONS: 7,316 CASES; 10,420 RECIPIENTS; 302,066.

SNAP COUPON CONVERSIONS: 0 CASES; 0 RECIPIENTS; \$0.

SNAP REINSTATED: 0 CASES; \$0.

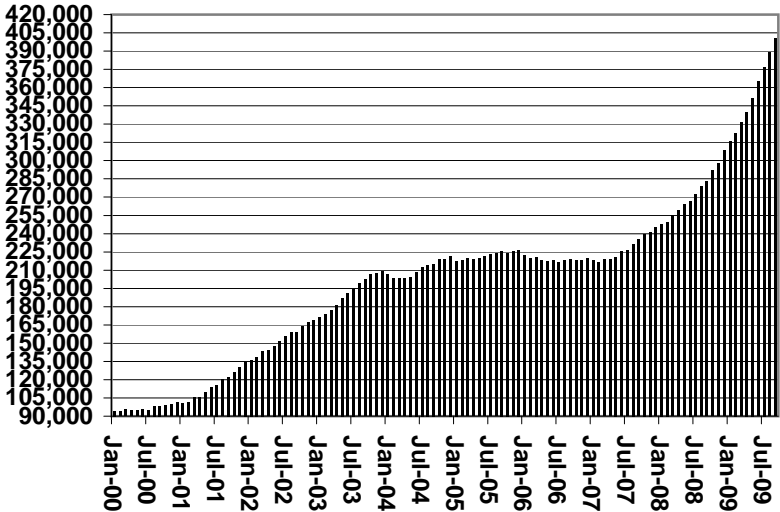
SNAP ZERO PAY: 12,012 CASES; 49,211 RECIPIENTS.

SNAP CHILD ONLY: 47,370 CASES; 106,541 RECIPIENTS; \$16,645,734.

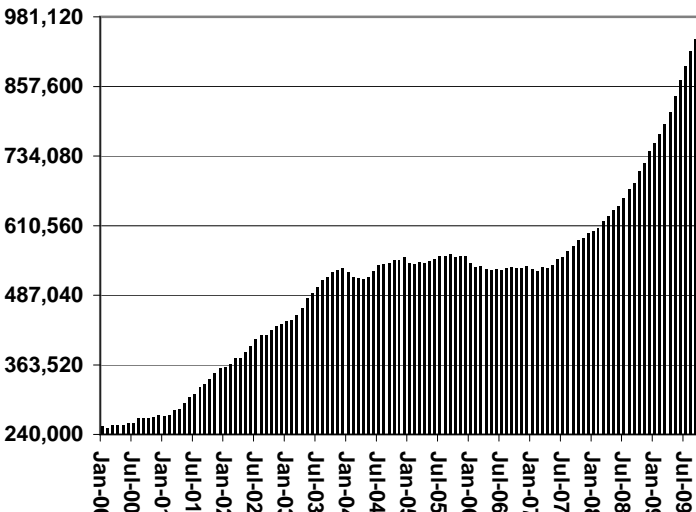
CHART 6

SUPPLEMENTAL NUTRITION ASSISTANCE PROGRAM (SNAP) COMPARISON OF HOUSEHOLDS, RECIPIENTS, PAYMENTS & AVERAGE PAYMENTS FOR 1999, 2000, 2001, 2002, 2003, 2004, 2005, 2006, 2007, 2008, & 2009

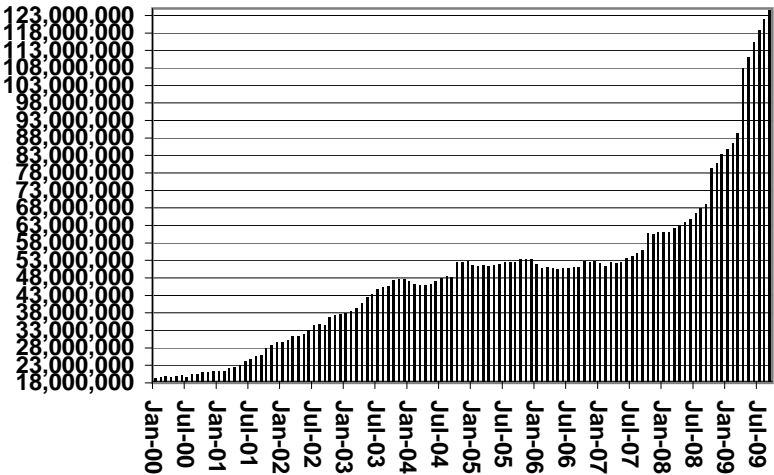
Households



Recipients



Payments



Average Payment Per Household

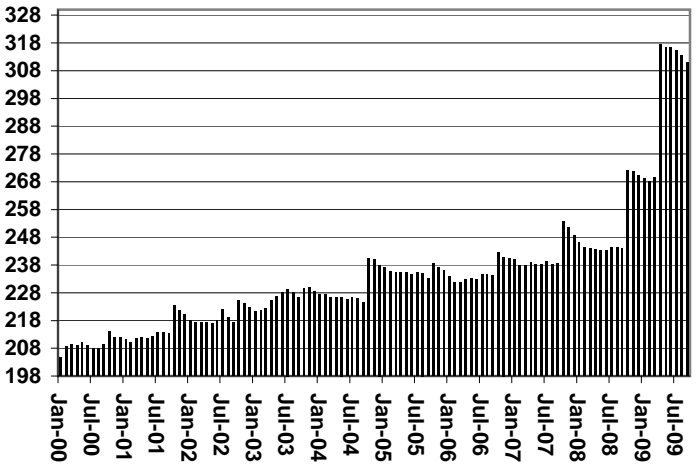


TABLE 7A
MEDICAL ASSISTANCE PROGRAM
RECIPIENTS

SEPTEMBER 2009

	SOBRA WOMAN 133% FPL	SOBRA CHILD	ADULT W/O CHILD 100% FPL	FOSTER CARE	1931 36% FPL	FEDERAL EMERGENCY SERVICES	INFANTS	ADULT W/O CHILD 40% FPL	MEDICAL W/SPEND DOWN	SOBRA WOMAN 100% FPL	SOBRA CHILD 100% FPL	TRANSITIONAL MEDICAL T1 - T4	1931 100% FPL	YATI	OTHER	TOTAL CASES
ARIZONA	10,550	66,262	52,920	11,517	334,281	89,525	50,163	143,873	6,220	3,884	216,157	35,896	110,952	310	25,264	1,157,774
DISTRICT I																
MARICOPA	5,520	37,219	24,656	5,877	185,465	70,361	29,689	70,927	3,499	2,040	124,950	18,488	54,894	183	12,750	646,518
DISTRICT II																
PIMA	1,627	10,126	9,908	3,248	50,144	10,191	7,130	25,933	767	540	31,466	5,387	18,500	76	4,399	179,442
DISTRICT III																
APACHE	193	1,417	973	39	11,261	138	1,008	4,898	116	99	4,371	715	2,722	0	370	28,320
COCONINO	301	1,426	1,429	143	8,226	540	1,184	4,266	141	108	4,922	1,033	2,988	6	366	27,079
NAVAJO	339	2,266	1,622	137	12,632	378	1,419	6,226	189	116	5,653	1,210	3,817	5	558	36,567
YAVAPAI	413	1,809	2,378	451	7,168	1,721	1,360	4,717	279	133	5,888	1,424	3,717	11	1,098	32,567
DISTRICT IV																
LA PAZ	34	215	245	13	1,289	165	154	752	26	15	676	158	373	0	154	4,269
MOHAVE	445	2,183	2,744	283	11,442	868	1,601	6,963	398	189	7,897	1,736	4,931	2	1,416	43,098
YUMA	538	2,694	2,919	274	11,877	1,989	1,968	4,223	243	217	10,159	1,977	6,662	4	1,260	47,004
DISTRICT V																
GILA	128	705	679	91	4,406	165	551	2,453	107	38	2,001	417	1,324	0	312	13,377
PINAL	537	3,815	2,396	598	17,465	1,703	2,209	7,291	243	192	9,322	1,709	5,266	14	1,209	53,969
DISTRICT VI																
COCHISE	257	1,235	1,536	250	6,652	645	910	2,887	104	90	4,064	901	2,678	8	784	23,001
GRAHAM	109	493	531	76	2,481	64	416	1,168	50	39	1,446	319	1,023	1	142	8,358
GREENLEE	15	57	63	7	389	9	64	163	6	12	263	36	163	0	23	1,270
SANTA CRUZ	94	602	841	30	3,384	588	500	1,006	52	56	3,079	386	1,894	0	423	12,935

TABLE 7B

MEDICAL ASSISTANCE PROGRAM

RECIPIENTS

CHANGE FROM

AUGUST 2009

	SOBRA WOMAN 133% FPL	SOBRA CHILD	ADULT W/O CHILD 100% FPL	FOSTER CARE	1931 36% FPL	FEDERAL EMERGENCY SERVICES	INFANTS	ADULT W/O CHILD 40% FPL	MEDICAL W/SPEND DOWN	SOBRA WOMAN 100% FPL	SOBRA CHILD 100% FPL	TRANSITIONAL MEDICAL T1 - T4	1931 100% FPL	YATI	OTHER	TOTAL CASES
ARIZONA	(223)	124	1,775	(77)	655	(487)	183	4,679	(177)	15	3,642	891	2,188	13	221	13,422
DISTRICT I																
MARICOPA	(85)	84	963	(31)	996	(432)	154	2,564	(75)	49	2,413	134	1,297	7	142	8,180
DISTRICT II																
PIMA	(30)	(143)	302	(12)	288	(46)	(22)	931	(39)	(4)	605	(20)	389	8	27	2,234
DISTRICT III																
APACHE	(13)	(10)	2	0	(277)	(2)	13	110	8	4	94	56	35	(2)	(2)	16
COCONINO	(4)	25	45	1	(102)	10	(2)	179	0	(7)	174	70	106	0	17	512
NAVAJO	22	5	20	(1)	(171)	4	(3)	177	8	(5)	20	112	23	(1)	11	221
YAVAPAI	(2)	4	92	1	22	(5)	6	154	(19)	(7)	154	85	0	0	26	511
DISTRICT IV																
LA PAZ	(4)	(2)	15	(1)	10	(4)	(8)	(1)	(2)	1	(36)	26	1	0	2	(3)
MOHAVE	(33)	(6)	57	0	157	(8)	(7)	164	(39)	(5)	95	69	82	0	17	543
YUMA	(24)	86	139	(13)	105	4	40	127	5	(12)	66	52	151	1	(32)	695
DISTRICT V																
GILA	(11)	8	(6)	(3)	(100)	3	(13)	41	(11)	(3)	19	50	0	0	3	(23)
PINAL	(21)	42	86	(2)	(73)	(7)	10	156	(2)	2	31	146	31	(1)	7	405
DISTRICT VI																
COCHISE	(11)	(10)	14	(11)	(60)	(5)	6	12	(15)	1	(61)	46	8	1	1	(84)
GRAHAM	3	22	15	(1)	(87)	6	(7)	19	1	(5)	12	51	15	0	4	48
GREENLEE	(4)	6	5	0	(26)	0	4	(4)	(3)	1	5	14	14	0	2	14
SANTA CRUZ	(6)	13	26	(4)	(27)	(5)	12	50	6	5	51	0	36	0	(4)	153

TABLE 7C

MEDICAL ASSISTANCE PROGRAM

RECIPIENTS

CHANGE FROM

SEPTEMBER 2008

	SOBRA WOMAN 133% FPL	SOBRA CHILD	ADULT W/O CHILD 100% FPL	FOSTER CARE	1931 36% FPL	FEDERAL EMERGENCY SERVICES	INFANTS	ADULT W/O CHILD 40% FPL	MEDICAL W/SPEND DOWN	SOBRA WOMAN 100% FPL	SOBRA CHILD 100% FPL	TRANSITIONAL MEDICAL T1 - T4	3E 1931 100% FPL	YATI	OTHER	TOTAL CASES
ARIZONA	(1,437)	2,238	11,576	878	50,424	5,853	(79)	39,703	690	215	43,294	(6,431)	27,286	49	546	174,805
DISTRICT I																
MARICOPA	(800)	1,369	6,738	529	33,431	5,779	(398)	22,937	569	160	27,394	(2,197)	15,570	42	599	111,722
DISTRICT II																
PIMA	(254)	306	1,765	249	6,527	(204)	115	6,784	(45)	(58)	5,089	(1,905)	3,857	1	(36)	22,191
DISTRICT III																
APACHE	(32)	(83)	139	(2)	586	51	25	671	36	7	695	(343)	463	(3)	(30)	2,180
COCONINO	(68)	9	253	21	910	4	41	1,071	26	17	1,007	(207)	696	2	(12)	3,770
NAVAJO	(10)	88	303	0	1,086	85	(24)	1,190	38	(13)	1,087	(329)	868	2	(37)	4,334
YAVAPAI	7	26	509	(10)	1,233	284	68	1,497	19	35	1,547	26	991	(3)	46	6,275
DISTRICT IV																
LA PAZ	(10)	(13)	27	1	90	(11)	(29)	143	(2)	(12)	16	7	27	0	6	240
MOHAVE	(42)	76	603	20	1,366	(10)	(1)	1,612	51	30	1,292	(271)	982	0	84	5,792
YUMA	(78)	189	305	8	1,062	(161)	31	661	11	1	1,313	(123)	1,065	2	(117)	4,169
DISTRICT V																
GILA	(15)	(18)	69	18	376	2	69	341	22	(2)	388	(83)	338	(2)	(3)	1,500
PINAL	(98)	180	450	60	2,597	(22)	(32)	1,793	(40)	13	1,888	(451)	1,265	4	19	7,626
DISTRICT VI																
COCHISE	11	94	154	(15)	243	6	12	396	(7)	13	489	(199)	401	4	23	1,625
GRAHAM	(33)	24	143	(1)	353	6	5	258	15	13	454	(183)	339	0	(17)	1,376
GREENLEE	(1)	24	24	(1)	129	4	3	58	(2)	6	161	(18)	109	0	(3)	493
SANTA CRUZ	(14)	(33)	94	1	435	40	36	291	(1)	5	474	(155)	315	0	24	1,512

CHART 7

MEDICAL ASSISTANCE PROGRAM

COMPARISON OF RECIPIENTS

FOR 1999, 2000, 2001, 2002, 2003, 2004, 2005, 2006, 2007, 2008, & 2009

Total Recipients

