



DEPARTMENT OF ECONOMIC SECURITY

Your Partner For A Stronger Arizona

State of Arizona

Department of Economic Security

Family Assistance Administration

Statistical Bulletin

October, 2009

Phone: (602) 542-3678

<http://www.azdes.gov/faa/Statistics.asp>

**** STATISTICAL BULLETIN ****
ARIZONA DEPARTMENT OF ECONOMIC SECURITY
FAMILY ASSISTANCE ADMINISTRATION
BOX 6123, PHOENIX, ARIZONA 85005
PHONE (602) 542-3678

OCTOBER 2009

THIS ISSUE OF THE STATISTICAL BULLETIN COMPARES OCTOBER 2009 DATA FOR EACH OF THE INDICATED PROGRAMS WITH THE INFORMATION FOR SEPTEMBER 2009 AND OCTOBER 2008. STATEWIDE SUMMARIES OF ACTIVITY WITHIN EACH OF THE SPECIFIC PROGRAMS FOR THIS REPORT PERIOD ARE DISCUSSED BELOW. THE TABLES COMPARE CURRENT AND PRIOR MONTH DATA. DISTRICT AND COUNTY COMPARISONS ARE PROVIDED WITHIN THIS BULLETIN

TANF SUMMARY

COMPARING TO SEPTEMBER 2009, OCTOBER 2009 CASES INCREASED BY 596 (1.50%) TO 40,235. RECIPIENTS INCREASED BY 1,409 (1.62%) TO 88,158. PAYMENTS INCREASED BY \$128,832 (1.52%) TO \$8,622,930. AVERAGE PAYMENT PER CASE INCREASED BY \$0.02 (0.01%) TO \$214.31. PAYMENT PER RECIPIENT DECREASED BY \$0.11 (0.11%) TO \$97.81.

COMPARING TO OCTOBER 2008, OCTOBER 2009 CASES INCREASED BY 2,040 (5.34%). RECIPIENTS INCREASED BY 5,136 (6.19%). TOTAL PAYMENTS DECREASED BY \$1,445,416 (14.36%). THE AVERAGE PAYMENT PER CASE DECREASED BY \$49.29 (18.70%). THE AVERAGE PAYMENT PER RECIPIENT DECREASED BY \$23.46 (19.34%).

CASH ASSISTANCE (CA)

COMPARING TO SEPTEMBER 2009, OCTOBER 2009 CASES INCREASED BY 596 (1.60%) TO 37,791. RECIPIENTS INCREASED BY 1,505 (1.89%) TO 81,135. PAYMENTS INCREASED BY \$132,040 (1.65%) TO \$8,147,828. AVERAGE PAYMENT PER CASE INCREASED BY \$0.09 (0.04%) TO \$215.60. PAYMENT PER RECIPIENT DECREASED BY \$0.24 (0.24%) TO \$100.42.

COMPARING TO OCTOBER 2008, OCTOBER 2009 CASES INCREASED BY 1,469 (4.04%). RECIPIENTS INCREASED BY 3,892 (5.04%). TOTAL PAYMENTS DECREASED BY \$1,455,081 (15.15%). THE AVERAGE PAYMENT PER CASE DECREASED BY \$48.78 (18.45%). THE AVERAGE PAYMENT PER RECIPIENT DECREASED BY \$23.90 (19.22%).

CASH ASSISTANCE UNEMPLOYED PARENT PROGRAM (CA-UP)

COMPARING TO SEPTEMBER 2009, OCTOBER 2009 CASES DECREASED BY 15 (1.02%) TO 1,451. RECIPIENTS DECREASED BY 106 (2.04%) TO 5,078. PAYMENTS DECREASED BY \$5,135 (1.25%) TO \$406,091. AVERAGE PAYMENT PER CASE DECREASED BY \$0.64 (0.23%) TO \$279.87. PAYMENT PER RECIPIENT INCREASED BY \$0.64 (0.81%) TO \$79.97.

COMPARING TO OCTOBER 2008, OCTOBER 2009 CASES INCREASED BY 306 (26.72%). RECIPIENTS INCREASED BY 827 (19.45%). TOTAL PAYMENTS DECREASED BY \$5,571 (1.35%). THE AVERAGE PAYMENT PER CASE DECREASED BY \$79.67 (22.16%). THE AVERAGE PAYMENT PER RECIPIENT DECREASED BY \$16.87 (17.42%).

CASH ASSISTANCE WITH GRANT UNDER \$100 (CA-MOE)

COMPARING TO SEPTEMBER 2009, OCTOBER 2009 CASES INCREASED BY 16 (1.74%) TO 936. RECIPIENTS INCREASED BY 6 (0.34%) TO 1,791. PAYMENTS INCREASED BY \$1,863 (2.92%) TO \$65,753. AVERAGE PAYMENT PER CASE INCREASED BY \$0.80 (1.15%) TO \$70.25. AVERAGE PAYMENT PER RECIPIENT INCREASED BY \$0.92 (2.57%) TO \$36.71.

COMPARING TO OCTOBER 2008, OCTOBER 2009 CASES INCREASED BY 230 (32.58%). RECIPIENTS INCREASED BY 332 (22.76%). TOTAL PAYMENTS INCREASED BY \$13,282 (25.31%). THE AVERAGE PAYMENT PER CASE DECREASED BY \$4.07 (5.48%). THE AVERAGE PAYMENT PER RECIPIENT INCREASED BY \$0.75 (2.09%).

CASH ASSISTANCE UNEMPLOYED PARENT PROGRAM WITH GRANT UNDER \$100 (CA-UP-MOE) NEW PROGRAM STARTING 7/01

COMPARING TO SEPTEMBER 2009, OCTOBER 2009 CASES DECREASED BY 1 (1.72%) TO 57. RECIPIENTS INCREASED BY 4 (2.67%) TO 154. PAYMENTS INCREASED BY \$64 (2.00%) TO \$3,258. AVERAGE PAYMENT PER CASE INCREASED BY \$2.09 (3.80%) TO \$57.16. PAYMENT PER RECIPIENT DECREASED BY \$0.13 (0.61%) TO \$21.16.

COMPARING TO OCTOBER 2008, OCTOBER 2009 CASES INCREASED BY 35 (159.09%). RECIPIENTS INCREASED BY 85 (2.66%). TOTAL PAYMENTS INCREASED BY \$1,954 (149.85%). THE AVERAGE PAYMENT PER CASE DECREASED BY \$2.11 (3.56%). THE AVERAGE PAYMENT PER RECIPIENT INCREASED BY \$2.26 (11.96%).

TUBERCULOSIS CONTROL PROGRAM (TC)

COMPARING TO SEPTEMBER 2009, OCTOBER 2009 CASES INCREASED BY 0 (0.00%) TO 2. RECIPIENTS INCREASED BY 0 (0.00%) TO 2. PAYMENTS INCREASED BY \$0 (0.00%) TO \$281. AVERAGE PAYMENT PER CASE INCREASED BY \$73.81 (52.53%) TO \$214.31. AVERAGE PAYMENT PER RECIPIENT INCREASED BY \$0.00 (0.00%) TO \$140.50.

COMPARING TO OCTOBER 2008, OCTOBER 2009 CASES DECREASED BY 4 (66.67%). RECIPIENTS DECREASED BY 4 (66.67%). TOTAL PAYMENTS DECREASED BY \$362 (56.30%). THE AVERAGE PAYMENT PER CASE INCREASED BY \$107.14 (99.98%). THE AVERAGE PAYMENT PER RECIPIENT INCREASED BY \$33.33 (31.10%).

SUPPLEMENTAL NUTRITION ASSISTANCE PROGRAM (SNAP)

COMPARING TO SEPTEMBER 2009, OCTOBER 2009 SUPPLEMENTAL NUTRITION ASSISTANCE HOUSEHOLDS INCREASED BY 12,977 (3.24%) TO 413,284. PERSONS RECEIVING SUPPLEMENTAL NUTRITION ASSISTANCE INCREASED BY 30,167 (3.20%) TO 972,162. TOTAL COUPON ISSUANCE INCREASED BY \$2,879,990 (2.31%) TO \$127,375,856. THE AVERAGE HOUSEHOLD ALLOTMENT DECREASED BY \$2.80 (0.90%) TO \$308.20. THE AVERAGE ALLOTMENT PER PERSON DECREASED BY \$1.14 (0.86%) TO \$131.02.

COMPARING TO OCTOBER 2008, OCTOBER 2009 SUPPLEMENTAL NUTRITION ASSISTANCE HOUSEHOLDS INCREASED BY 121,219 (41.50%). PERSONS RECEIVING SUPPLEMENTAL NUTRITION ASSISTANCE INCREASED BY 265,585 (37.59%). TOTAL COUPON ISSUANCE INCREASED BY \$47,969,962 (60.41%). THE AVERAGE ALLOTMENT PER HOUSEHOLD INCREASED BY \$36.32 (13.36%). THE AVERAGE ALLOTMENT PER PERSON INCREASED BY \$18.64 (16.59%).

MEDICAL ASSISTANCE PROGRAM (MA) NEW TABLE INCLUDES PROP. 204 CATEGORIES

COMPARING TO SEPTEMBER 2009, OCTOBER 2009 TOTAL RECIPIENTS TOTAL RECIPIENTS INCREASED BY 25,148 (2.17%). SOBRA WOMEN AT 140% FPL INCREASED BY 250 (2.37%). SOBRA CHILDREN INCREASED BY 1,499 (2.26%). ADULTS W/O CHILD AT 100% INCREASED BY 2,770 (5.23%). FOSTER CARE INCREASED BY 15 (0.13%). 1931 AT 36% FPL INCREASED BY 4,945 (1.48%). EMERGENCY SERVICES INCREASED BY 311 (0.35%). INFANTS INCREASED BY 496 (0.99%). ADULT W/O CHILD AT 140% INCREASED BY 5,709 (3.97%). MEDICAL W/SPEND DOWN INCREASED BY 441 (7.09%). SOBRA WOMAN AT 100% INCREASED BY 42 (1.08%). SOBRA CHILD AT 100% INCREASED BY 4,723 (2.18%). TRANSITIONAL MEDICAL INCREASED BY 556 (1.55%). 1931 AT 100% INCREASED BY 3,049 (2.75%). YATI INCREASED BY 9 (2.90%). ALL OTHER CATEGORIES INCREASED BY 333 (1.32%).

COMPARING TO OCTOBER 2008, OCTOBER 2009 TOTAL RECIPIENTS TOTAL RECIPIENTS INCREASED BY 186,747 (18.75%). SOBRA WOMEN AT 140% FPL DECREASED BY 1,180 (9.85%). SOBRA CHILDREN INCREASED BY 2,698 (4.15%). ADULTS W/O CHILD AT 100% INCREASED BY 13,581 (32.25%). FOSTER CARE INCREASED BY 830 (7.76%). 1931 AT 36% FPL INCREASED BY 51,094 (17.73%). EMERGENCY SERVICES INCREASED BY 5,722 (6.80%). INFANTS INCREASED BY 841 (1.69%). ADULT W/O CHILD AT 140% INCREASED BY 44,178 (41.91%). MEDICAL W/SPEND DOWN INCREASED BY 795 (13.55%). SOBRA WOMAN AT 100% INCREASED BY 258 (7.03%). SOBRA CHILD AT 100% INCREASED BY 44,843 (25.47%). TRANSITIONAL MEDICAL DECREASED BY 6,170 (14.48%). 1931 AT 100% INCREASED BY 28,721 (33.68%). YATI INCREASED BY 54 (20.38%). ALL OTHER CATEGORIES INCREASED BY 482 (1.92%).

TANF SUMMARY

TABLES 1, 1A, 1B, & 1C: ARIZONA 1

	OCTOBER 2009							CHANGE FROM			OCTOBER 2008		
	FAMILIES (CASES)	PERSONS (RECIP.)	ADULTS	CHILDREN	TOTAL PAYMENTS	AVERAGE	AVERAGE	FAMILIES (CASES)	PERSONS (RECIP.)	TOTAL PAYMENTS	FAMILIES (CASES)	PERSONS (RECIP.)	TOTAL PAYMENTS
						PAYMENT/ CASE	PAYMENT/ RECIP.						
ARIZONA	40,235	88,158	21,978	66,180	8,622,930	214.31	97.81	596	1,409	128,832	2,040	5,136	(1,445,416)
DISTRICT I													
MARICOPA	24,487	54,352	12,893	41,459	5,211,248	212.82	95.88	442	961	85,515	2,666	6,217	(594,106)
DISTRICT II													
PIMA	6,737	13,963	3,692	10,271	1,418,156	210.50	101.57	58	70	11,483	(190)	(421)	(377,508)
DISTRICT III													
APACHE	6	16	3	13	1,531	255.17	95.69	5	11	1,139	(83)	(173)	(20,638)
COCONINO	245	536	132	404	49,629	202.57	92.59	4	23	444	(9)	(19)	(13,455)
NAVAJO	1,495	3,930	1,212	2,718	407,882	272.83	103.79	32	116	9,489	188	747	44,095
YAVAPAI	700	1,385	302	1,083	137,575	196.54	99.33	(3)	12	117	1	24	(33,379)
DISTRICT IV													
LA PAZ	193	420	130	290	38,335	198.63	91.27	3	(1)	(682)	(24)	(50)	(15,392)
MOHAVE	1,246	2,583	726	1,857	256,044	205.49	99.13	22	72	9,216	(125)	(339)	(97,290)
YUMA	1,026	2,263	483	1,780	219,644	214.08	97.06	3	53	3,224	(132)	(338)	(86,253)
DISTRICT V													
GILA	748	1,589	567	1,022	180,127	240.81	113.36	22	56	4,760	10	71	(12,180)
PINAL	1,974	4,385	1,166	3,219	412,147	208.79	93.99	9	34	4,681	49	134	(92,027)
DISTRICT VI													
COCHISE	793	1,561	364	1,197	163,524	206.21	104.76	1	9	118	(231)	(495)	(101,995)
GRAHAM	302	590	179	411	67,118	222.25	113.76	4	4	76	(24)	(53)	(14,451)
GREENLEE	23	46	10	36	4,543	197.52	98.76	(8)	(16)	(1,613)	(6)	(8)	(2,175)
SANTA CRUZ	260	539	119	420	55,427	213.18	102.83	2	5	865	(50)	(161)	(28,662)

1/EXCLUDES: PRIOR MONTH NET TOTALS OF 2,203 CASES; 5,281 RECIPIENTS; \$395,026.
 GRANT DIVERSION TOTALS OF: 808 CASES; \$642,173.
 ZERO PAY TOTALS OF 1,636 CASES; 5,107 RECIPIENTS.
 TANF CHILD ONLY: 19,570 CASES; 32,964 RECIPIENTS; \$3,764,051.
 RRP: 740 CASES; 1,232 RECIPIENTS; \$163,872.

	CURRENT MO. CASES	CURRENT MO. RECIP.	CURRENT MO. DOLLARS	PRIOR MO. CASES	PRIOR MO. RECIP.	PRIOR MO. DOLLARS
PASQUAYAAQUI	388	1,158	\$122,692	27	85	6,909
WM APACHE	814	2,396	\$256,759	8	25	1,223
SALT RIVER	92	303	\$28,530	15	54	4,061
SAN CARLOS	621	1,372	\$161,553	16	38	2,137
HOPI	119	334	\$26,342	8	22	1,194
TOTAL	2,034	5,563	\$595,876	74	224	\$15,524

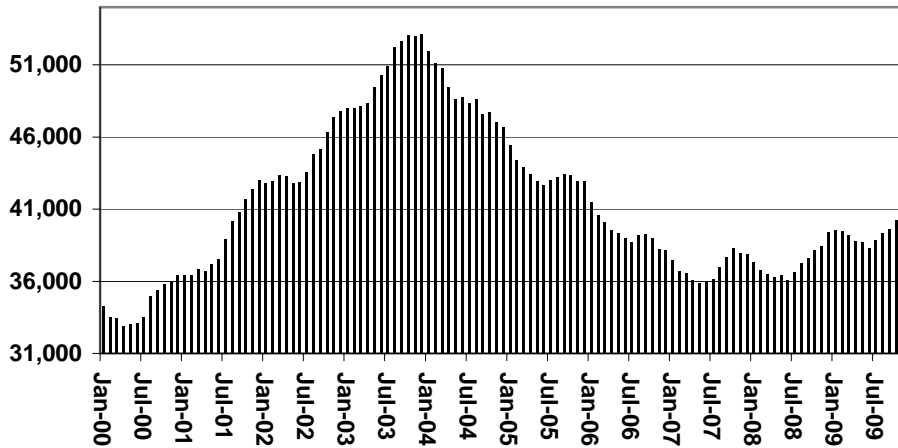
TANF SUMMARY

TABLES 1, 1A, 1B, & 1C

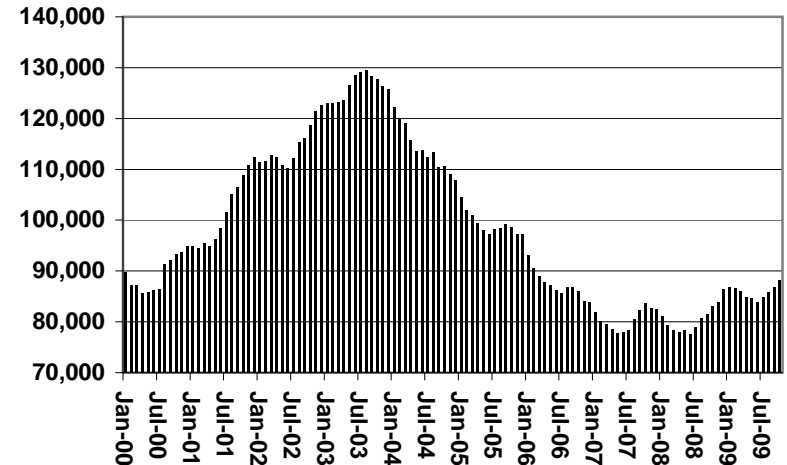
COMPARISON OF CASES, RECIPIENTS, PAYMENTS & AVERAGE PAYMENTS

FOR 2000, 2001, 2002, 2003, 2004, 2005, 2006, 2007, 2008, & 2009

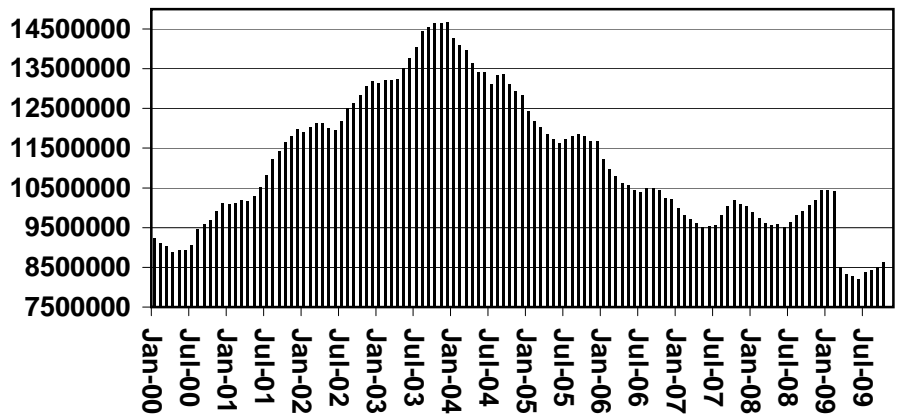
Cases



Recipients



Payments



Average Payments Per Recipient

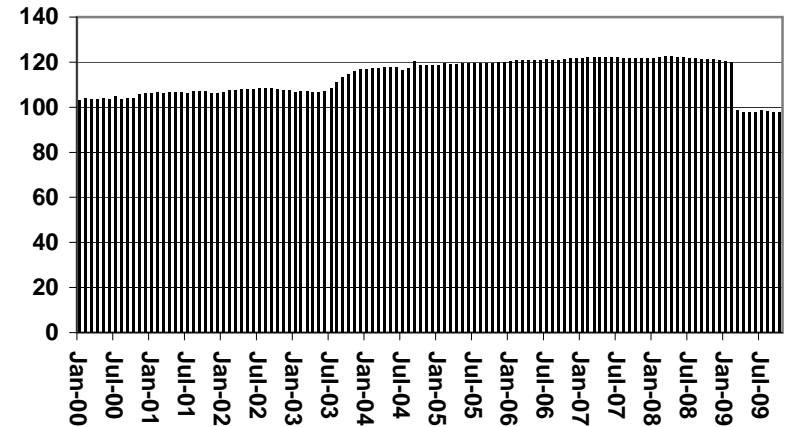
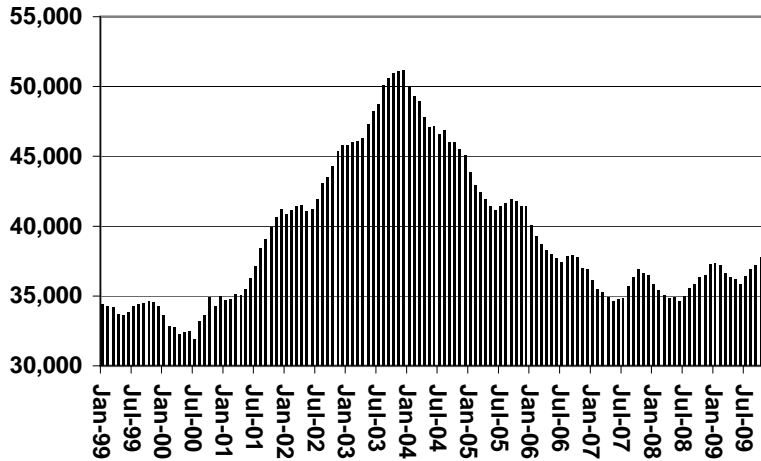


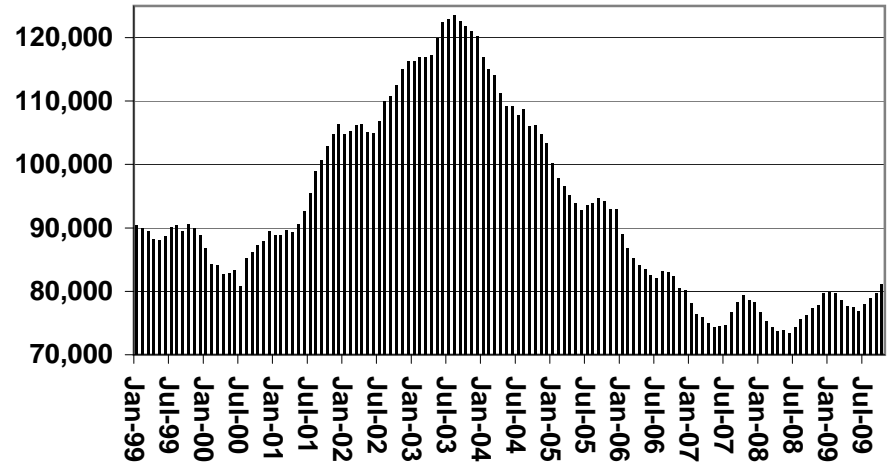
CHART 1

CASH ASSISTANCE PROGRAM COMPARISON OF CASES, RECIPIENTS, PAYMENTS & AVERAGE PAYMENTS FOR 1999, 2000, 2001, 2002, 2003, 2004, 2005, 2006, 2007, 2008, & 2009

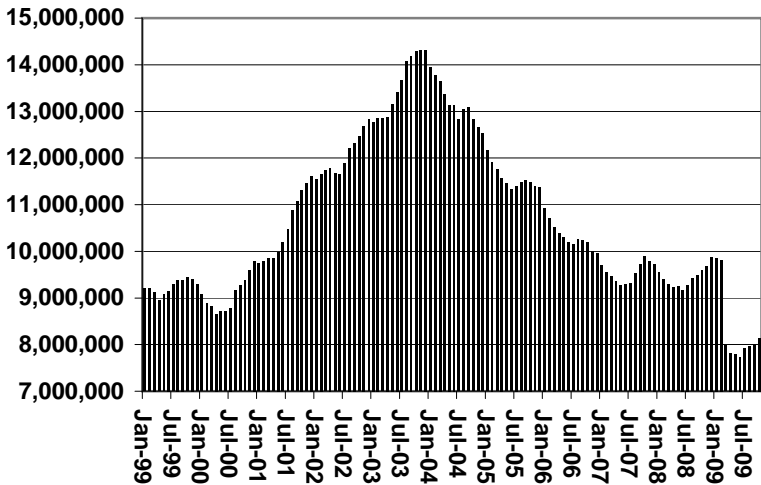
Cases



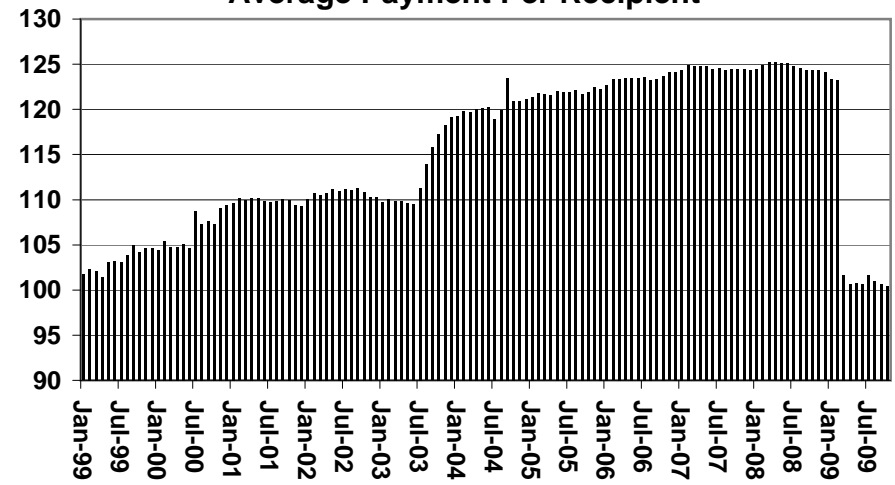
Recipients



Payments



Average Payment Per Recipient



**TABLE 1A
CA-UP
CASH ASSISTANCE UNEMPLOYED PARENT PROGRAM: ARIZONA 1/**

CHANGE FROM

	OCTOBER 2009							SEPTEMBER 2009			OCTOBER 2008		
	FAMILIES (CASES)	PERSONS (RECIP.)	ADULTS	CHILDREN	TOTAL PAYMENTS	AVERAGE PAYMENT/ CASE	AVERAGE PAYMENT/ RECIP.	FAMILIES (CASES)	PERSONS (RECIP.)	TOTAL PAYMENTS	FAMILIES (CASES)	PERSONS (RECIP.)	TOTAL PAYMENTS
ARIZONA	1,451	5,078	1,843	3,235	406,091	279.87	79.97	(15)	(106)	(5,135)	306	827	(5,571)
DISTRICT I													
MARICOPA	990	3,338	1,074	2,264	271,452	274.19	81.32	2	(28)	1,070	328	949	35,278
DISTRICT II													
PIMA	235	909	387	522	71,257	303.22	78.39	(31)	(125)	(9,226)	52	211	5,674
DISTRICT III													
APACHE	0	0	0	0	0	0.00	0.00	(1)	(5)	(392)	(3)	(11)	(1,183)
COCONINO	4	19	6	13	1,511	377.75	79.53	1	6	449	(1)	0	(353)
NAVAJO	27	95	50	45	8,696	322.07	91.54	3	9	879	(47)	(221)	(20,993)
YAVAPAI	13	40	15	25	3,251	250.08	81.28	0	(5)	(346)	7	25	1,748
DISTRICT IV													
LA PAZ	71	262	122	140	19,718	277.72	75.26	7	23	989	(35)	(149)	(19,756)
MOHAVE	7	24	12	12	1,935	276.43	80.63	0	(2)	17	(1)	(7)	(866)
YUMA	32	121	61	60	8,940	279.38	73.88	7	22	1,220	(27)	(112)	(12,973)
	32	117	49	68	8,843	276.34	75.58	0	3	(248)	(7)	(30)	(5,917)
DISTRICT V													
GILA	97	372	170	202	26,851	276.81	72.18	2	20	1,477	18	72	(717)
PINAL	2	6	4	2	555	277.50	92.50	0	(2)	194	(3)	(17)	(1,454)
	95	366	166	200	26,296	276.80	71.85	2	22	1,283	21	89	737
DISTRICT VI													
COCHISE	14	43	19	24	3,355	239.64	78.02	2	(1)	(35)	(13)	(49)	(5,269)
GRAHAM	7	25	11	14	1,902	271.71	76.08	2	4	170	(6)	(14)	(1,965)
GREENLEE	2	6	2	4	419	209.50	69.83	0	0	(34)	(2)	(8)	(1,111)
SANTA CRUZ	0	0	0	0	0	0.00	0.00	0	0	0	(1)	(4)	(103)
	5	12	6	6	1,034	206.80	86.17	0	(5)	(171)	(4)	(23)	(2,090)

1/EXCLUDES: PRIOR MONTH NET TOTALS OF: 125 CASES; 477 RECIPIENTS; \$45,937.
GRANT DIVERSION TOTALS OF: 0 CASES; \$0.
ZERO PAY TOTALS OF 83 CASES; 361 RECIPIENTS.

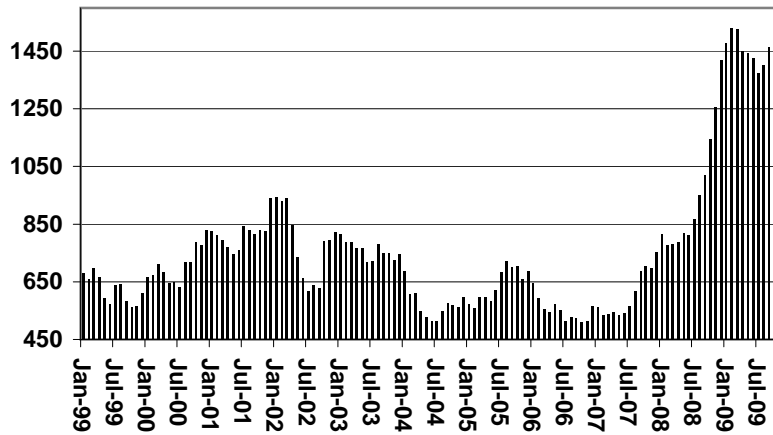
	CURRENT MO. CASES	CURRENT MO. RECIP.	CURRENT MO. DOLLARS	PRIOR MO. CASES	PRIOR MO. RECIP.	PRIOR MO. DOLLARS
PASQUAYAUQUI	26	117	9,803	3	13	703
WM APACHE	10	43	4,028	0	0	0
SALT RIVER	0	0	0	0	0	0
SAN CARLOS	0	0	0	0	0	0
HOPÍ	0	0	0	0	0	0
TOTAL	36	160	13,831	3	13	703

CASES WITH GRANT UNDER \$100 (SEE TABLE 1C).

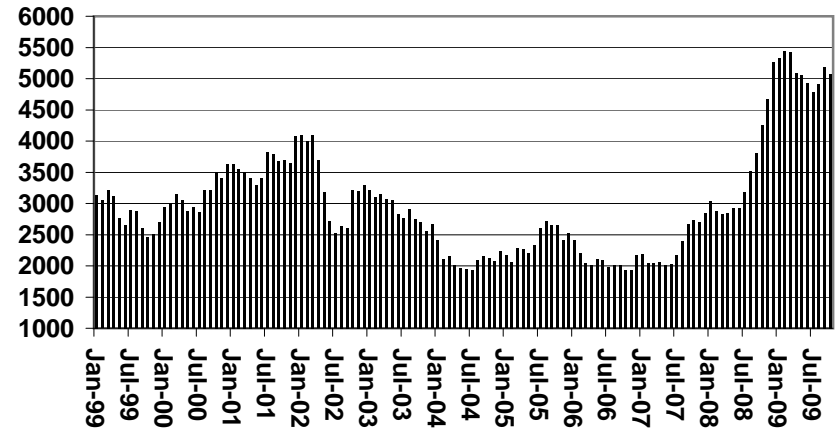
CHART 1A

CASH ASSISTANCE UNEMPLOYED PARENT PROGRAM COMPARISON OF CASES, RECIPIENTS, PAYMENTS & AVERAGE PAYMENTS FOR 1999, 2000, 2001, 2002, 2003, 2004, 2005, 2006, 2007, 2008, & 2009

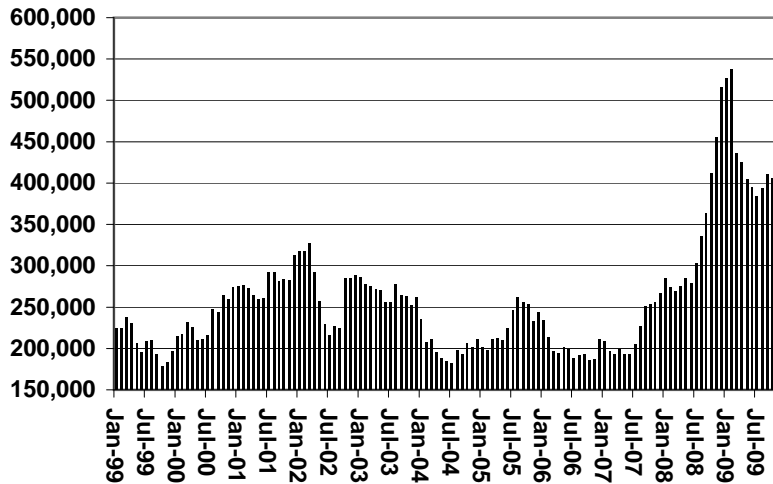
Cases



Recipients



Payments



Average Payment Per Recipient

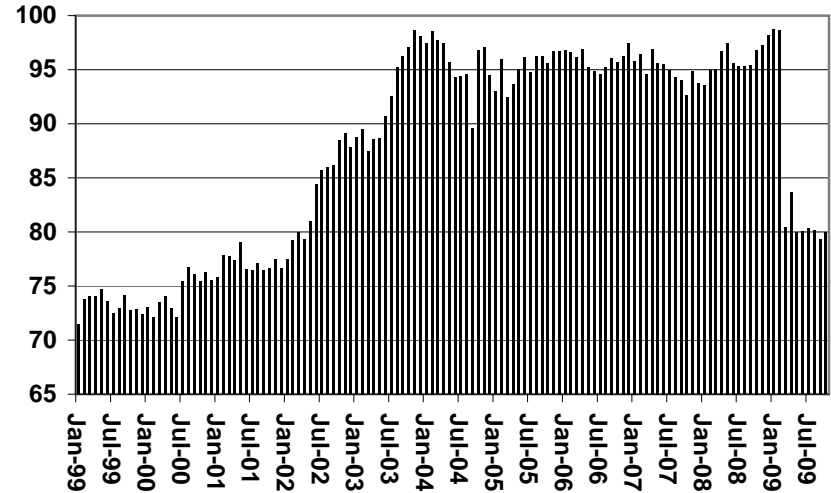


TABLE 1B 1/

CASH ASSISTANCE: ARIZONA
CASES WITH GRANT UNDER \$100

	OCTOBER 2009							CHANGE FROM					
								SEPTEMBER 2009			OCTOBER 2008		
	FAMILIES (CASES)	PERSONS (RECIP.)	ADULTS	CHILDREN	TOTAL PAYMENTS	AVERAGE PAYMENT/ CASE	AVERAGE PAYMENT/ RECIP.	FAMILIES (CASES)	PERSONS (RECIP.)	TOTAL PAYMENTS	FAMILIES (CASES)	PERSONS (RECIP.)	TOTAL PAYMENTS
ARIZONA	936	1,791	438	1,353	65,753	70.25	36.71	16	6	1,863	230	332	13,282
DISTRICT I													
MARICOPA	603	1,190	268	922	40,617	67.36	34.13	46	82	4,014	197	339	11,775
DISTRICT II													
PIMA	142	244	72	172	11,282	79.45	46.24	(6)	(16)	199	18	5	1,031
DISTRICT III													
APACHE	1	2	0	2	30	30.00	15.00	1	2	30	(5)	(14)	(464)
COCONINO	1	2	1	1	222	222.00	111.00	(3)	(4)	(174)	(6)	(17)	(315)
NAVAJO	16	31	8	23	997	62.31	32.16	1	(2)	27	7	15	378
YAVAPAI	26	48	11	37	1,739	66.88	36.23	(2)	(3)	(396)	8	17	568
DISTRICT IV													
LA PAZ	7	15	4	11	463	66.14	30.87	2	3	(71)	(4)	(10)	(347)
MOHAVE	33	66	23	43	2,503	75.85	37.92	(10)	(27)	(512)	(3)	(8)	(122)
YUMA	17	34	11	23	1,471	86.53	43.26	1	1	(217)	(5)	(19)	(279)
DISTRICT V													
GILA	8	9	0	9	379	47.38	42.11	(1)	(2)	(211)	6	7	133
PINAL	47	87	25	62	3,442	73.23	39.56	(10)	(16)	(539)	11	6	550
DISTRICT VI													
COCHISE	25	47	11	36	2,015	80.60	42.87	1	2	(23)	9	21	583
GRAHAM	8	12	4	8	498	62.25	41.50	(1)	(8)	(17)	1	(1)	76
GREENLEE	0	0	0	0	0	0.00	0.00	0	0	0	0	0	0
SANTA CRUZ	2	4	0	4	95	47.50	23.75	(3)	(6)	(247)	(4)	(9)	(285)

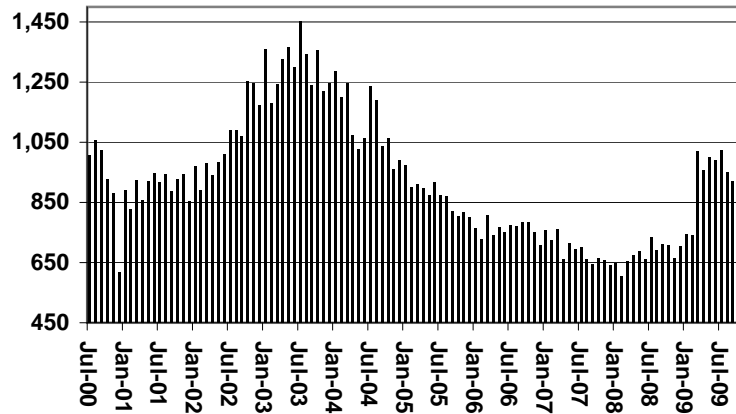
EXCLUDES: PRIOR MONTH NET TOTALS OF 960 CASES; 1,955 RECIPIENTS; \$61,524.

CHART 1B

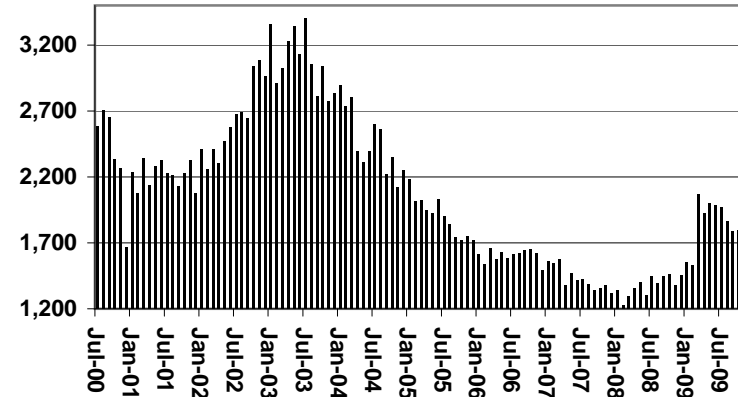
CASH ASSISTANCE PROGRAM CASES WITH GRANT UNDER \$100

FOR 1999, 2000, 2001, 2002, 2003, 2004, 2005, 2006, 2007, 2008, & 2009

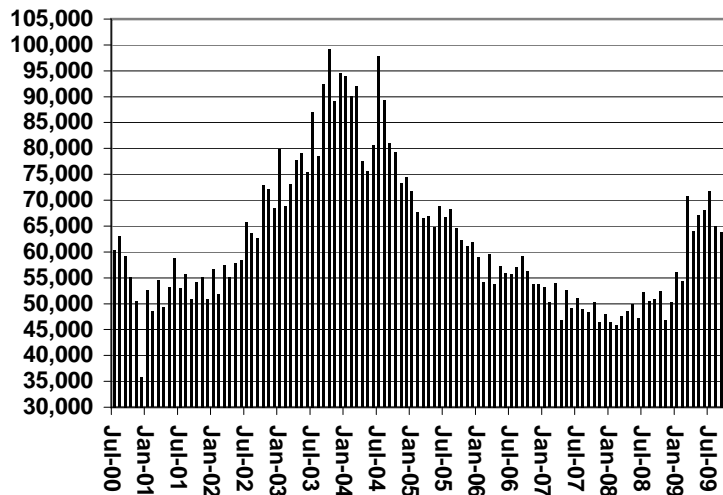
Cases



Recipients



Payments



Average Payment Per Recipient

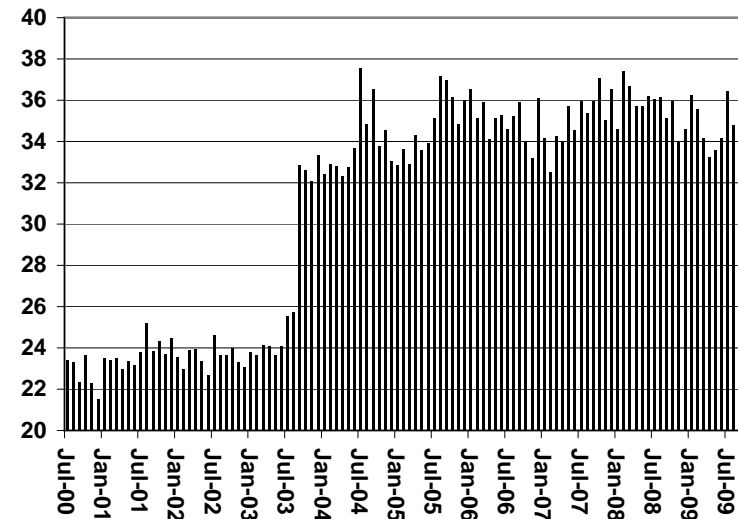


TABLE 1C 1/

CASH ASSISTANCE UNEMPLOYED PARENT PROGRAM: ARIZONA
 CASES WITH GRANT UNDER \$100

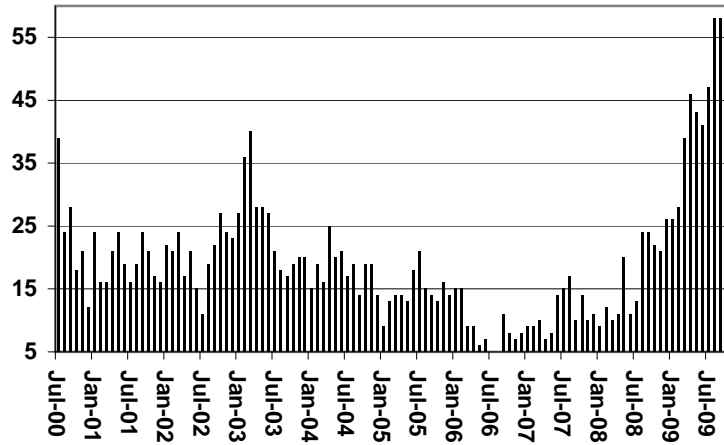
	OCTOBER 2009							CHANGE FROM			OCTOBER 2008		
					AVERAGE	AVERAGE	SEPTEMBER 2009			OCTOBER 2008			
	FAMILIES (CASES)	PERSONS (RECIP.)	ADULTS	CHILDREN	TOTAL PAYMENTS	PAYMENT/ CASE	PAYMENT/ RECIP.	FAMILIES (CASES)	PERSONS (RECIP.)	TOTAL PAYMENTS	FAMILIES (CASES)	PERSONS (RECIP.)	TOTAL PAYMENTS
ARIZONA	57	154	33	121	3,258	57.16	21.16	(1)	4	64	35	85	1,954
DISTRICT I													
MARICOPA	49	126	24	102	2,835	57.86	22.50	1	3	206	37	94	2,186
DISTRICT II													
PIMA	5	20	7	13	227	45.40	11.35	0	4	(61)	2	9	41
DISTRICT III													
APACHE	0	0	0	0	0	0.00	0.00	0	0	0	0	0	0
COCONINO	0	0	0	0	0	0.00	0.00	0	0	0	(1)	(5)	(56)
NAVAJO	0	0	0	0	0	0.00	0.00	0	0	0	0	0	0
YAVAPAI	2	3	0	3	120	60.00	40.00	0	0	16	1	2	23
DISTRICT IV													
LA PAZ	0	0	0	0	0	0.00	0.00	0	0	0	(1)	(5)	(24)
MOHAVE	0	0	0	0	0	0.00	0.00	0	0	0	(1)	(5)	(77)
YUMA	0	0	0	0	0	0.00	0.00	0	0	0	(2)	(7)	(158)
DISTRICT V													
GILA	0	0	0	0	0	0.00	0.00	(3)	(8)	(173)	(1)	(3)	(57)
PINAL	0	0	0	0	0	0.00	0.00	(3)	(8)	(173)	(1)	(3)	(57)
DISTRICT VI													
COCHISE	0	0	0	0	0	0.00	0.00	0	0	0	0	0	0
GRAHAM	0	0	0	0	0	0.00	0.00	0	0	0	0	0	0
GREENLEE	0	0	0	0	0	0.00	0.00	0	0	0	0	0	0
SANTA CRUZ	1	5	2	3	76	76.00	15.20	1	5	76	1	5	76

EXCLUDES: PRIOR MONTH NET TOTALS OF 85 CASES; 265 RECIPIENTS; \$4,802.

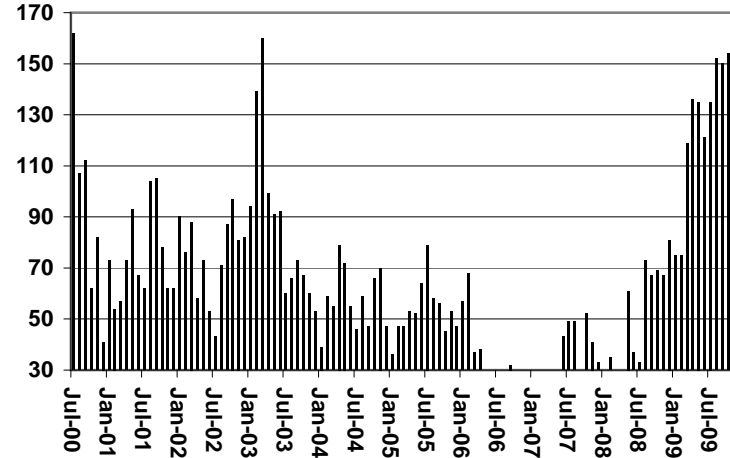
CHART 1C

CASH ASSISTANCE UNEMPLOYED PARENT PROGRAM CASES WITH GRANT UNDER \$100 FOR 1999, 2000, 2001, 2002, 2003, 2004, 2005, 2006, 2007, 2008, & 2009

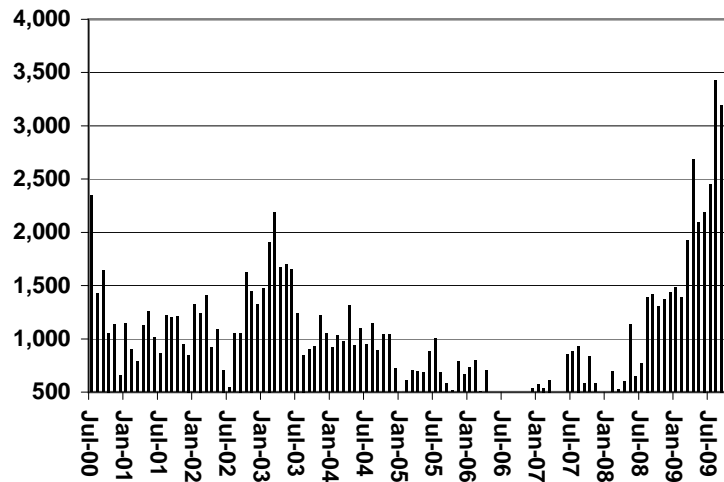
Cases



Recipients



Payments



Average Payment Per Recipient

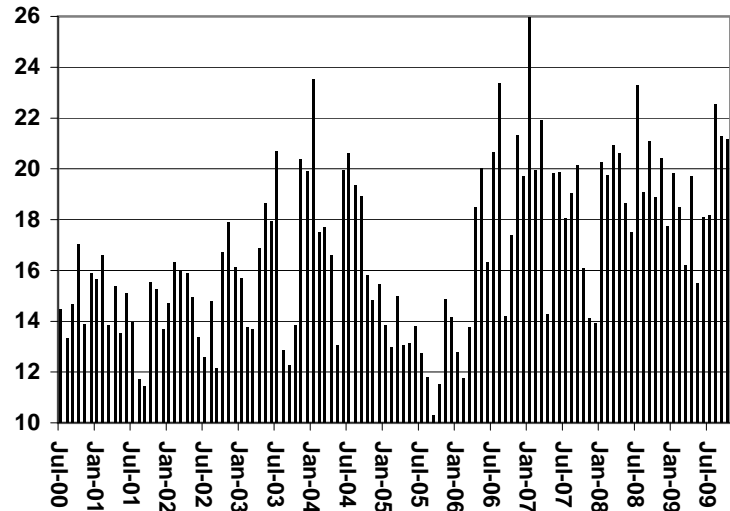


TABLE 4

TUBERCULOSIS CONTROL: ARIZONA 1/

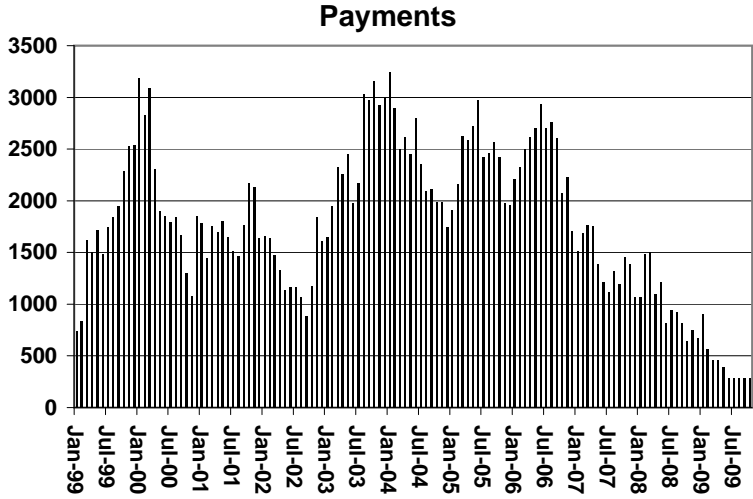
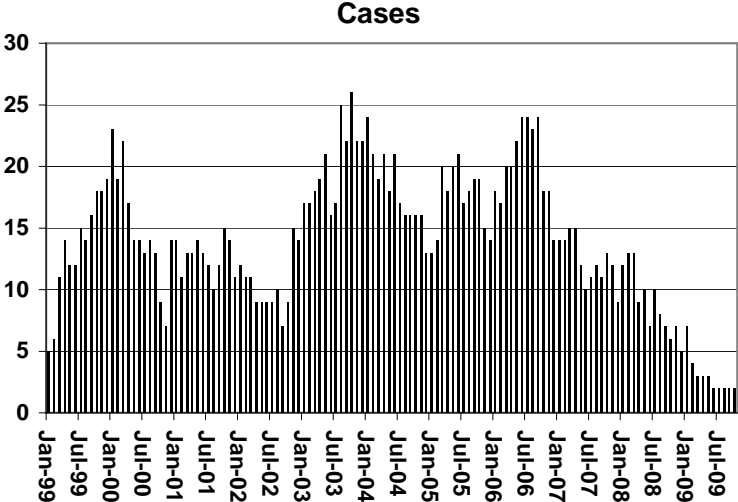
	CHANGE FROM											
	OCTOBER 2009					SEPTEMBER 2009			OCTOBER 2008			
	NUMBER OF CASES	PERSONS (RECIP.)	TOTAL PAYMENTS	AVERAGE PAYMENT/ CASE	AVERAGE PAYMENT/ RECIP.	NUMBER OF CASES	PERSONS (RECIP.)	TOTAL PAYMENTS	NUMBER OF CASES	PERSONS (RECIP.)	TOTAL PAYMENTS	
ARIZONA	2	2	281	140.50	140.50	0	0	0	(4)	(4)	(362)	
DISTRICT I												
MARICOPA	1	1	173	173.00	173.00	0	0	0	(5)	(5)	(470)	
DISTRICT II												
PIMA	0	0	0	0.00	0.00	0	0	0	0	0	0	
DISTRICT III												
APACHE	0	0	0	0.00	0.00	0	0	0	0	0	0	
COCONINO	0	0	0	0.00	0.00	0	0	0	0	0	0	
NAVAJO	0	0	0	0.00	0.00	0	0	0	0	0	0	
YAVAPAI												
DISTRICT IV												
LA PAZ	0	0	0	0.00	0.00	0	0	0	0	0	0	
MOHAVE	0	0	0	0.00	0.00	0	0	0	0	0	0	
YUMA												
DISTRICT V												
GILA	0	0	0	0.00	0.00	0	0	0	0	0	0	
PINAL	0	0	0	0.00	0.00	0	0	0	0	0	0	
DISTRICT VI												
COCHISE	1	1	108	108.00	108.00	0	0	0	1	1	108	
GRAHAM	1	1	108	108.00	108.00	0	0	0	1	1	108	
GREENLEE	0	0	0	0.00	0.00	0	0	0	0	0	0	
SANTA CRUZ	0	0	0	0.00	0.00	0	0	0	0	0	0	

1/EXCLUDES: PRIOR MONTH NET TOTALS OF : 0 CASES; 0 RECIPIENTS; \$0.

CHART 4

TUBERCULOSIS CONTROL PROGRAM

COMPARISON OF CASES, PAYMENTS & AVERAGE PAYMENTS FOR 1999, 2000, 2001, 2002, 2003, 2004, 2005, 2006, 2007, 2008, & 2009



Average Payment Per Case

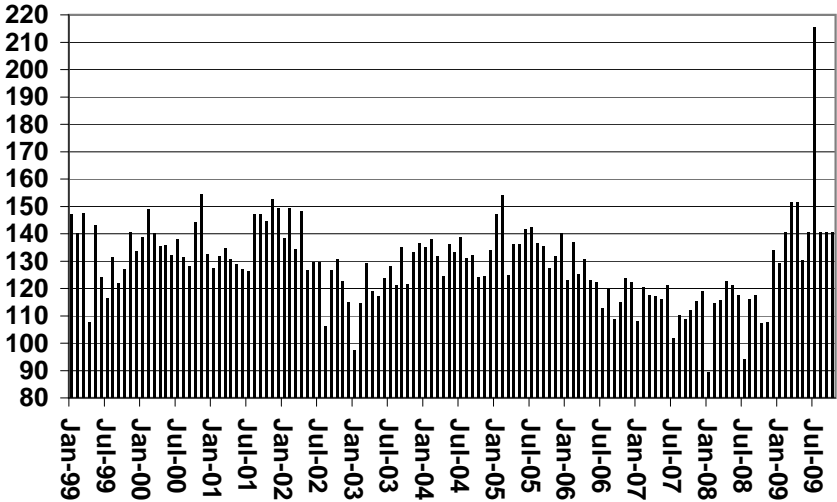


TABLE 6

SUPPLEMENTAL NUTRITION ASSISTANCE PROGRAM: ARIZONA 1/

CHANGE FROM

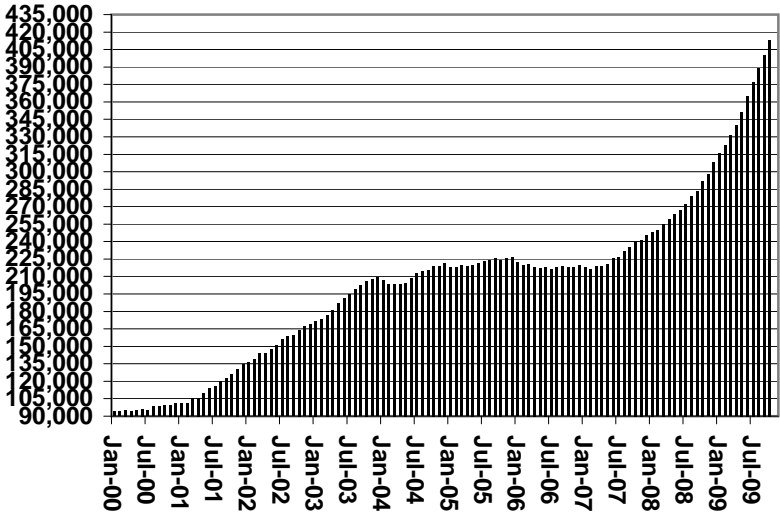
	OCTOBER 2009					SEPTEMBER 2009			OCTOBER 2008		
	HOUSEHOLDS	PERSONS	TOTAL COUPON ISSUANCE	AVERAGE ALLOT./ HOUSEHOLD	AVERAGE ALLOT./ PERSON	HOUSEHOLDS	PERSONS	TOTAL COUPON ISSUANCE	HOUSEHOLDS	PERSONS	TOTAL COUPON ISSUANCE
ARIZONA	413,284	972,162	127,375,856	308.20	131.02	12,977	30,167	2,879,990	121,219	265,585	47,969,962
DISTRICT I											
MARICOPA	222,338	523,889	69,941,139	314.57	133.50	7,909	18,646	1,939,164	72,995	160,115	28,174,225
DISTRICT II											
PIMA	71,196	155,415	20,628,172	289.74	132.73	2,032	4,110	406,676	19,838	39,118	7,513,055
DISTRICT III											
APACHE	6,920	20,880	2,580,067	372.84	123.57	132	289	17,967	174	697	401,342
COCONINO	8,909	24,472	3,019,352	338.91	123.38	250	746	49,689	2,633	6,586	1,160,760
NAVAJO	14,432	38,786	4,827,955	334.53	124.48	329	936	64,128	3,943	9,782	1,721,079
YAVAPAI	12,744	26,284	3,344,243	262.42	127.23	418	845	68,675	4,243	8,796	1,412,708
DISTRICT IV											
LA PAZ	34,012	79,051	9,852,748	289.68	124.64	841	2,027	133,797	7,052	15,625	3,018,565
MOHAVE	1,786	3,765	492,000	275.48	130.68	49	67	4,939	350	648	141,124
YUMA	17,479	35,685	4,649,242	265.99	130.29	510	1,070	105,010	3,873	7,510	1,432,011
	14,747	39,601	4,711,506	319.49	118.97	282	890	23,848	2,829	7,467	1,445,430
DISTRICT V											
GILA	25,572	62,806	8,184,211	320.05	130.31	730	1,722	157,900	6,592	15,670	2,904,113
PINAL	5,515	12,517	1,660,198	301.03	132.64	281	667	82,636	1,470	3,241	614,434
	20,057	50,289	6,524,013	325.27	129.73	449	1,055	75,264	5,122	12,429	2,289,679
DISTRICT VI											
COCHISE	17,161	40,579	4,997,969	291.24	123.17	336	846	41,994	3,749	9,196	1,664,115
GRAHAM	9,336	20,443	2,557,994	273.99	125.13	81	252	5,051	1,340	2,801	670,418
GREENLEE	2,946	7,159	880,063	298.73	122.93	115	244	19,050	924	2,424	360,189
SANTA CRUZ	473	1,112	128,924	272.57	115.94	(19)	(69)	(12,360)	237	649	77,658
	4,406	11,865	1,430,988	324.78	120.61	159	419	30,253	1,248	3,322	555,850

1/EXCLUDES: PRIOR MONTH NET TOTALS OF : 12,430 CASES; 14,906 RECIPIENTS; \$2,368,289.
 AGED CANCELATIONS: 7,381 CASES; 10,072 RECIPIENTS; 341,380.
 SNAP COUPON CONVERSIONS: 0 CASES; 0 RECIPIENTS; \$0.
 SNAP REINSTATED: 0 CASES; \$0.
 SNAP ZERO PAY: 12,012 CASES; 49,211 RECIPIENTS.
 SNAP CHILD ONLY: 48,216; 108,601 RECIPIENTS; \$16,956,676.

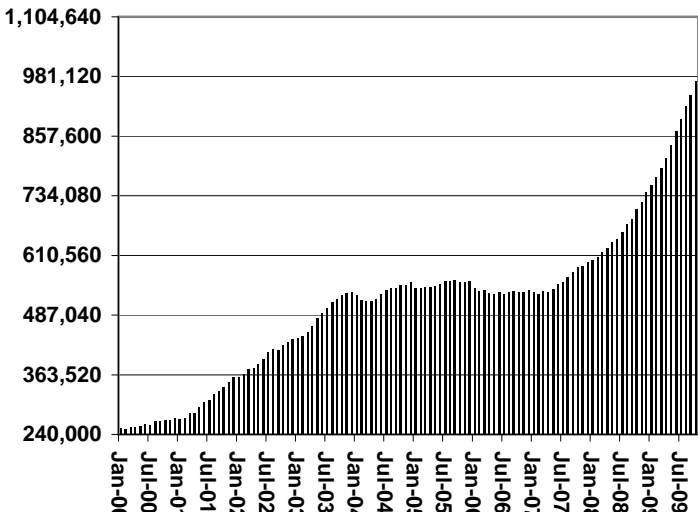
CHART 6

SUPPLEMENTAL NUTRITION ASSISTANCE PROGRAM (SNAP) COMPARISON OF HOUSEHOLDS, RECIPIENTS, PAYMENTS & AVERAGE PAYMENTS FOR 1999, 2000, 2001, 2002, 2003, 2004, 2005, 2006, 2007, 2008, & 2009

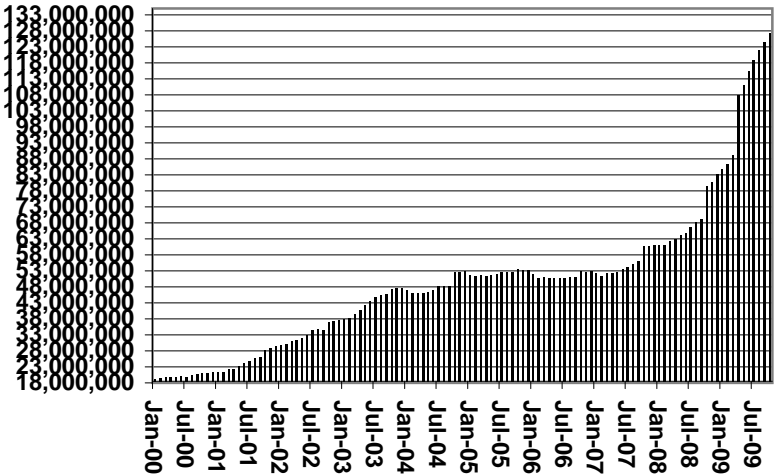
Households



Recipients



Payments



Average Payment Per Household

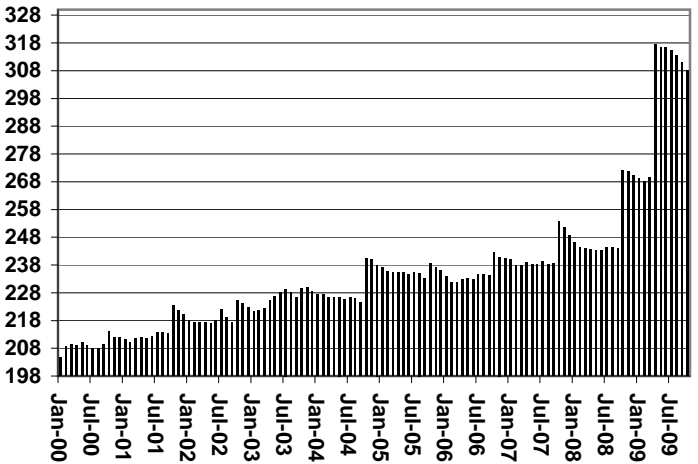


TABLE 7A
MEDICAL ASSISTANCE PROGRAM
RECIPIENTS

OCTOBER 2009

	SOBRA WOMAN 133% FPL	SOBRA CHILD	ADULT W/O CHILD 100% FPL	FOSTER CARE	1931 36% FPL	FEDERAL EMERGENCY SERVICES	INFANTS	ADULT W/O CHILD 40% FPL	MEDICAL W/SPEND DOWN	SOBRA WOMAN 100% FPL	SOBRA CHILD 100% FPL	TRANSITIONAL MEDICAL T1 - T4	1931 100% FPL	YATI	OTHER	TOTAL CASES
ARIZONA	10,800	67,761	55,690	11,532	339,226	89,836	50,659	149,582	6,661	3,926	220,880	36,452	114,001	319	25,597	1,182,922
DISTRICT I																
MARICOPA	5,696	38,024	25,958	5,901	188,558	70,483	30,005	73,951	3,646	2,048	128,043	18,624	56,852	188	12,899	660,876
DISTRICT II																
PIMA	1,657	10,400	10,421	3,233	51,082	10,236	7,235	26,973	894	560	31,993	5,443	18,879	81	4,495	183,582
DISTRICT III																
APACHE	205	1,409	1,025	40	11,260	138	1,019	5,036	126	108	4,462	806	2,773	0	371	28,778
COCONINO	307	1,462	1,537	141	8,317	550	1,198	4,416	140	101	4,985	1,063	3,062	9	356	27,644
NAVAJO	339	2,330	1,738	137	12,650	386	1,422	6,436	183	130	5,818	1,263	3,865	4	561	37,262
YAVAPAI	419	1,825	2,488	449	7,262	1,747	1,397	4,934	319	127	6,012	1,476	3,810	11	1,126	33,402
DISTRICT IV																
LA PAZ	29	223	265	13	1,287	170	150	753	28	21	685	181	383	0	157	4,345
MOHAVE	427	2,272	2,905	281	11,552	858	1,600	7,161	451	200	8,070	1,659	5,074	3	1,432	43,945
YUMA	557	2,714	2,981	282	12,082	2,022	2,001	4,392	287	221	10,275	2,094	6,671	3	1,267	47,849
DISTRICT V																
GILA	122	703	712	93	4,502	176	556	2,538	94	36	1,997	407	1,315	0	317	13,568
PINAL	573	3,966	2,516	596	17,667	1,760	2,214	7,600	242	199	9,514	1,667	5,489	12	1,243	55,258
DISTRICT VI																
COCHISE	247	1,259	1,622	255	6,719	626	901	2,961	119	82	4,081	983	2,653	6	786	23,300
GRAHAM	109	485	527	73	2,554	64	408	1,216	60	32	1,498	308	1,070	1	144	8,549
GREENLEE	16	70	74	8	379	9	64	168	11	8	282	34	182	0	22	1,327
SANTA CRUZ	97	619	921	30	3,355	611	489	1,047	61	53	3,165	444	1,923	1	421	13,237

TABLE 7B
MEDICAL ASSISTANCE PROGRAM
RECIPIENTS

CHANGE FROM
SEPTEMBER 2009

	SOBRA WOMAN 133% FPL	SOBRA CHILD	ADULT W/O CHILD 100% FPL	FOSTER CARE	1931 36% FPL	FEDERAL EMERGENCY SERVICES	INFANTS	ADULT W/O CHILD 40% FPL	MEDICAL W/SPEND DOWN	SOBRA WOMAN 100% FPL	SOBRA CHILD 100% FPL	TRANSITIONAL MEDICAL T1 - T4	1931 100% FPL	YATI	OTHER	TOTAL CASES
ARIZONA	250	1,499	2,770	15	4,945	311	496	5,709	441	42	4,723	556	3,049	9	333	25,148
DISTRICT I																
MARICOPA	176	805	1,302	24	3,093	122	316	3,024	147	8	3,093	136	1,958	5	149	14,358
DISTRICT II																
PIMA	30	274	513	(15)	938	45	105	1,040	127	20	527	56	379	5	96	4,140
DISTRICT III																
APACHE	12	(8)	52	1	(1)	0	11	138	10	9	91	91	51	0	1	458
COCONINO	6	36	108	(2)	91	10	14	150	(1)	(7)	63	30	74	3	(10)	565
NAVAJO	0	64	116	0	18	8	3	210	(6)	14	165	53	48	(1)	3	695
YAVAPAI	6	16	110	(2)	94	26	37	217	40	(6)	124	52	93	0	28	835
DISTRICT IV																
LA PAZ	(4)	117	243	6	313	28	28	368	99	21	298	63	162	0	26	1,768
MOHAVE	(5)	8	20	0	(2)	5	(4)	1	2	6	9	23	10	0	3	76
YUMA	(18)	89	161	(2)	110	(10)	(1)	198	53	11	173	(77)	143	1	16	847
	19	20	62	8	205	33	33	169	44	4	116	117	9	(1)	7	845
DISTRICT V																
GILA	30	149	153	0	298	68	10	394	(14)	5	188	(52)	214	(2)	39	1,480
PINAL	(6)	(2)	33	2	96	11	5	85	(13)	(2)	(4)	(10)	(9)	0	5	191
	36	151	120	(2)	202	57	5	309	(1)	7	192	(42)	223	(2)	34	1,289
DISTRICT VI																
COCHISE	(6)	46	173	3	101	4	(28)	168	39	(22)	174	127	70	(1)	1	849
GRAHAM	(10)	24	86	5	67	(19)	(9)	74	15	(8)	17	82	(25)	(2)	2	299
GREENLEE	0	(8)	(4)	(3)	73	0	(8)	48	10	(7)	52	(11)	47	0	2	191
SANTA CRUZ	1	13	11	1	(10)	0	0	5	5	(4)	19	(2)	19	0	(1)	57
	3	17	80	0	(29)	23	(11)	41	9	(3)	86	58	29	1	(2)	302

TABLE 7C
MEDICAL ASSISTANCE PROGRAM
RECIPIENTS

CHANGE FROM
OCTOBER 2008

	SOBRA WOMAN 133% FPL	SOBRA CHILD	ADULT W/O CHILD 100% FPL	FOSTER CARE	1931 36% FPL	FEDERAL EMERGENCY SERVICES	INFANTS	ADULT W/O CHILD 40% FPL	MEDICAL W/SPEND DOWN	SOBRA WOMAN 100% FPL	SOBRA CHILD 100% FPL	TRANSITIONAL MEDICAL T1 - T4	3E 1931 100% FPL	YATI	OTHER	TOTAL CASES
ARIZONA	(1,180)	2,698	13,581	830	51,094	5,722	841	44,178	795	258	44,843	(6,170)	28,721	54	482	186,747
DISTRICT I																
MARICOPA	(640)	1,480	7,616	488	33,306	5,614	285	25,196	577	137	28,852	(2,028)	16,680	44	485	118,092
DISTRICT II																
PIMA	(214)	364	2,152	240	6,760	(238)	260	7,627	49	(19)	5,164	(1,973)	4,096	4	(22)	24,250
DISTRICT III	(94)	35	1,564	3	4,201	455	207	5,166	72	81	4,491	(732)	3,127	(1)	(31)	18,544
APACHE	(11)	(67)	180	(2)	614	51	47	851	48	27	714	(269)	465	(3)	(27)	2,618
COCONINO	(68)	(5)	353	16	1,068	15	69	1,266	11	6	1,029	(216)	766	5	(8)	4,307
NAVAJO	(27)	91	422	1	1,230	76	(8)	1,403	10	17	1,151	(317)	856	0	(44)	4,861
YAVAPAI	12	16	609	(12)	1,289	313	99	1,646	3	31	1,597	70	1,040	(3)	48	6,758
DISTRICT IV	(98)	293	1,096	33	2,791	(136)	25	2,668	80	39	2,625	(491)	2,003	2	(38)	10,892
LA PAZ	(17)	(9)	44	1	91	4	(42)	142	2	2	11	13	27	0	2	271
MOHAVE	(46)	135	697	23	1,458	(20)	(6)	1,704	67	35	1,282	(347)	993	1	86	6,062
YUMA	(35)	167	355	9	1,242	(120)	73	822	11	2	1,332	(157)	983	1	(126)	4,559
DISTRICT V	(85)	339	612	69	2,839	25	33	2,334	(20)	12	2,027	(495)	1,658	2	45	9,395
GILA	(9)	(6)	101	20	528	22	64	398	15	(8)	288	(102)	285	(1)	16	1,611
PINAL	(76)	345	511	49	2,311	3	(31)	1,936	(35)	20	1,739	(393)	1,373	3	29	7,784
DISTRICT VI	(49)	187	541	(3)	1,197	2	31	1,187	37	8	1,684	(451)	1,157	3	43	5,574
COCHISE	(9)	133	193	(2)	409	(31)	(8)	490	(1)	(2)	481	(155)	310	2	34	1,844
GRAHAM	(20)	22	142	(2)	376	(1)	(1)	315	21	5	497	(203)	402	0	(6)	1,547
GREENLEE	(2)	37	32	0	140	0	13	66	5	2	181	(16)	128	0	0	586
SANTA CRUZ	(18)	(5)	174	1	272	34	27	316	12	3	525	(77)	317	1	15	1,597

CHART 7

MEDICAL ASSISTANCE PROGRAM

COMPARISON OF RECIPIENTS

FOR 1999, 2000, 2001, 2002, 2003, 2004, 2005, 2006, 2007, 2008, & 2009

Total Recipients

