



State of Arizona

Department of Economic Security

Family Assistance Administration

Statistical Bulletin

February, 2008

Phone: (602) 542-3678

<http://www.azdes.gov/faa/Statistics.asp>

**** STATISTICAL BULLETIN ****
ARIZONA DEPARTMENT OF ECONOMIC SECURITY
FAMILY ASSISTANCE ADMINISTRATION
BOX 6123, PHOENIX, ARIZONA 85005
PHONE (602) 542-3678

FEBRUARY 2008

THIS ISSUE OF THE STATISTICAL BULLETIN COMPARES FEBRUARY 2008 DATA FOR EACH OF THE INDICATED PROGRAMS WITH THE INFORMATION FOR JANUARY 2008 AND FEBRUARY 2007. STATEWIDE SUMMARIES OF ACTIVITY WITHIN EACH OF THE SPECIFIC PROGRAMS FOR THIS REPORT PERIOD ARE DISCUSSED BELOW. THE TABLES COMPARE CURRENT AND PRIOR MONTH DATA. DISTRICT AND COUNTY COMPARISONS ARE PROVIDED WITHIN THIS BULLETIN

CASH ASSISTANCE (CA)

COMPARING TO JANUARY 2008, FEBRUARY 2008 CASES DECREASED BY 484 (1.35%) TO 35,383. RECIPIENTS DECREASED BY 1,363 (1.78%) TO 75,309. PAYMENTS DECREASED BY \$143,881 (1.51%) TO \$9,402,519. AVERAGE PAYMENT PER CASE DECREASED BY \$0.42 (0.16%) TO \$265.74. PAYMENT PER RECIPIENT INCREASED BY \$0.34 (0.27%) TO \$124.85.

COMPARING TO FEBRUARY 2007, FEBRUARY 2008 CASES DECREASED BY 77 (0.22%). RECIPIENTS DECREASED BY 1,149 (1.50%). TOTAL PAYMENTS DECREASED BY \$146,598 (1.54%). THE AVERAGE PAYMENT PER CASE DECREASED BY \$3.55 (1.32%). THE AVERAGE PAYMENT PER RECIPIENT DECREASED BY \$0.04 (0.03%).

CASH ASSISTANCE UNEMPLOYED PARENT PROGRAM (CA-UP)

COMPARING TO JANUARY 2008, FEBRUARY 2008 CASES DECREASED BY 39 (4.78%) TO 777. RECIPIENTS DECREASED BY 162 (5.33%) TO 2,880. PAYMENTS DECREASED BY \$11,225 (3.94%) TO \$273,314. AVERAGE PAYMENT PER CASE INCREASED BY \$3.06 (0.88%) TO \$351.76. PAYMENT PER RECIPIENT INCREASED BY \$1.36 (1.46%) TO \$94.90.

COMPARING TO FEBRUARY 2007, FEBRUARY 2008 CASES INCREASED BY 242 (45.23%). RECIPIENTS INCREASED BY 839 (41.11%). TOTAL PAYMENTS INCREASED BY \$76,583 (38.93%). THE AVERAGE PAYMENT PER CASE DECREASED BY \$15.97 (4.34%). THE AVERAGE PAYMENT PER RECIPIENT DECREASED BY \$1.49 (1.55%).

CASH ASSISTANCE WITH GRANT UNDER \$100 (CA-MOE)

COMPARING TO JANUARY 2008, FEBRUARY 2008 CASES INCREASED BY 0 (0.00%) TO 0. RECIPIENTS INCREASED BY 0 (0.00%) TO 0. PAYMENTS INCREASED BY \$0 (0.00%) TO \$0. AVERAGE PAYMENT PER CASE INCREASED BY \$0.00 (0.00%) TO \$0.00. AVERAGE PAYMENT PER RECIPIENT INCREASED BY \$0.00 (0.00%) TO \$0.00.

COMPARING TO FEBRUARY 2007, FEBRUARY 2008 CASES INCREASED BY 0 (0.00%). RECIPIENTS INCREASED BY 0 (0.00%). TOTAL PAYMENTS INCREASED BY \$0 (0.00%). THE AVERAGE PAYMENT PER CASE INCREASED BY \$0.00 (0.00%). THE AVERAGE PAYMENT PER RECIPIENT INCREASED BY \$0.00 (0.00%).

CASH ASSISTANCE UNEMPLOYED PARENT PROGRAM WITH GRANT UNDER \$100 (CA-UP-MOE) NEW PROGRAM STARTING 7/01

COMPARING TO JANUARY 2008, FEBRUARY 2008 CASES INCREASED BY 0 (0.00%) TO 0. RECIPIENTS INCREASED BY 0 (0.00%) TO 0. PAYMENTS INCREASED BY \$0 (0.00%) TO \$0. AVERAGE PAYMENT PER CASE INCREASED BY \$0.00 (0.00%) TO \$0.00. PAYMENT PER RECIPIENT INCREASED BY \$0.00 (0.00%) TO \$0.00.

COMPARING TO FEBRUARY 2007, FEBRUARY 2008 CASES INCREASED BY 0 (0.00%). RECIPIENTS INCREASED BY 0 (0.00%). TOTAL PAYMENTS INCREASED BY \$0 (0.00%). THE AVERAGE PAYMENT PER CASE INCREASED BY \$0.00 (0.00%). THE AVERAGE PAYMENT PER RECIPIENT INCREASED BY \$0.00 (0.00%).

GENERAL ASSISTANCE (GA)

COMPARING TO JANUARY 2008, FEBRUARY 2008 CASES INCREASED BY 11 (0.80%) TO 1,380. RECIPIENTS INCREASED BY 10 (0.73%) TO 1,383. PAYMENTS INCREASED BY \$2,168 (1.05%) TO \$209,059. AVERAGE PAYMENT PER CASE INCREASED BY \$0.36 (0.24%) TO \$151.49. AVERAGE PAYMENT PER RECIPIENT INCREASED BY \$0.47 (0.31%) TO \$151.16.

COMPARING TO FEBRUARY 2007, FEBRUARY 2008 CASES DECREASED BY 1 (0.07%). RECIPIENTS DECREASED BY 7 (0.50%). TOTAL PAYMENTS DECREASED BY \$803 (0.38%). THE AVERAGE PAYMENT PER CASE DECREASED BY \$0.47 (0.31%). THE AVERAGE PAYMENT PER RECIPIENT INCREASED BY \$0.18 (0.12%).

TUBERCULOSIS CONTROL PROGRAM (TC)

COMPARING TO JANUARY 2008, FEBRUARY 2008 CASES INCREASED BY 1 (8.33%) TO 13. RECIPIENTS INCREASED BY 1 (8.33%) TO 13. PAYMENTS INCREASED BY \$417 (38.90%) TO \$1,489. AVERAGE PAYMENT PER CASE INCREASED BY \$25.21 (28.22%) TO \$114.54. AVERAGE PAYMENT PER RECIPIENT INCREASED BY \$25.21 (28.22%) TO \$114.54.

COMPARING TO FEBRUARY 2007, FEBRUARY 2008 CASES DECREASED BY 1 (7.14%). RECIPIENTS DECREASED BY 1 (7.14%). TOTAL PAYMENTS DECREASED BY \$194 (11.53%). THE AVERAGE PAYMENT PER CASE DECREASED BY \$5.67 (4.72%). THE AVERAGE PAYMENT PER RECIPIENT DECREASED BY \$5.67 (4.72%).

SUPPLEMENTAL PAYMENTS PROGRAM (SPP)

AS A RESULT OF ARIZONA'S OMNIBUS BUDGET RECONCILIATION BILL, HB 2535, THE SUPPLEMENTAL PAYMENT PROGRAM (SPP) IS BEING SUSPENDED EFFECTIVE JULY, 2003 THROUGH JUNE, 2004.

FOOD STAMP PROGRAM (FS)

COMPARING TO JANUARY 2008, FEBRUARY 2008 FOOD STAMP HOUSEHOLDS INCREASED BY 1,598 (0.64%) TO 249,625. PERSONS RECEIVING FOOD STAMPS INCREASED BY 4,556 (0.76%) TO 606,563. TOTAL COUPON ISSUANCE DECREASED BY \$67,858 (0.11%) TO \$60,994,513. THE AVERAGE HOUSEHOLD ALLOTMENT DECREASED BY \$1.85 (0.75%) TO \$244.34. THE AVERAGE ALLOTMENT PER PERSON DECREASED BY \$0.87 (0.86%) TO \$100.56.

COMPARING TO FEBRUARY 2007, FEBRUARY 2008 FOOD STAMP HOUSEHOLDS INCREASED BY 33,070 (15.27%). PERSONS RECEIVING FOOD STAMPS INCREASED BY 75,856 (14.29%). TOTAL COUPON ISSUANCE INCREASED BY \$9,513,811 (18.48%). THE AVERAGE ALLOTMENT PER HOUSEHOLD INCREASED BY \$6.61 (2.78%). THE AVERAGE ALLOTMENT PER PERSON INCREASED BY \$3.56 (3.67%).

MEDICAL ASSISTANCE PROGRAM (MA) NEW TABLE INCLUDES PROP. 204 CATEGORIES

COMPARING TO JANUARY 2008, FEBRUARY 2008 TOTAL RECIPIENTS TOTAL RECIPIENTS INCREASED BY 0 (0.00%). SOBRA WOMEN AT 140% FPL INCREASED BY 0 (0.00%). SOBRA CHILDREN INCREASED BY 0 (0.00%). ADULTS W/O CHILD AT 100% INCREASED BY 0 (0.00%). FOSTER CARE INCREASED BY 0 (0.00%). 1931 AT 36% FPL INCREASED BY 0 (0.00%). EMERGENCY SERVICES INCREASED BY 0 (0.00%). INFANTS INCREASED BY 0 (0.00%). ADULT W/O CHILD AT 140% INCREASED BY 0 (0.00%). MEDICAL W/SPEND DOWN INCREASED BY 0 (0.00%). SOBRA WOMAN AT 100% INCREASED BY 0 (0.00%). SOBRA CHILD AT 100% INCREASED BY 0 (0.00%). TRANSITIONAL MEDICAL INCREASED BY 0 (0.00%). 1931 AT 100% INCREASED BY 0 (0.00%). YATI INCREASED BY 0 (0.00%). ALL OTHER CATEGORIES INCREASED BY 0 (0.00%).

COMPARING TO FEBRUARY 2007, FEBRUARY 2008 TOTAL RECIPIENTS TOTAL RECIPIENTS INCREASED BY 0 (0.00%). SOBRA WOMEN AT 140% FPL INCREASED BY 0 (0.00%). SOBRA CHILDREN INCREASED BY 0 (0.00%). ADULTS W/O CHILD AT 100% INCREASED BY 0 (0.00%). FOSTER CARE INCREASED BY 0 (0.00%). 1931 AT 36% FPL INCREASED BY 0 (0.00%). EMERGENCY SERVICES INCREASED BY 0 (0.00%). INFANTS INCREASED BY 0 (0.00%). ADULT W/O CHILD AT 140% INCREASED BY 0 (0.00%). MEDICAL W/SPEND DOWN INCREASED BY 0 (0.00%). SOBRA WOMAN AT 100% INCREASED BY 0 (0.00%). SOBRA CHILD AT 100% INCREASED BY 0 (0.00%). TRANSITIONAL MEDICAL INCREASED BY 0 (0.00%). 1931 AT 100% INCREASED BY 0 (0.00%). YATI INCREASED BY 0 (0.00%). ALL OTHER CATEGORIES INCREASED BY 0 (0.00%).

TANF SUMMARY

TABLES 1, 1A, 1B, & 1C: ARIZONA 1

	FEBRUARY 2008							JANUARY 2008			FEBRUARY 2007		
	FAMILIES (CASES)	PERSONS (RECIP.)	ADULTS	CHILDREN	TOTAL PAYMENTS	AVERAGE PAYMENT/ CASE	AVERAGE PAYMENT/ RECIP.	FAMILIES (CASES)	PERSONS (RECIP.)	TOTAL PAYMENTS	FAMILIES (CASES)	PERSONS (RECIP.)	TOTAL PAYMENTS
ARIZONA	36,777	79,450	19,260	60,190	9,722,407	264.36	122.37	(563)	(1,624)	(155,300)	49	(621)	(74,236)
DISTRICT I													
MARICOPA	20,470	44,867	10,166	34,701	5,462,370	266.85	121.75	(194)	(576)	(45,678)	480	950	100,748
DISTRICT II													
PIMA	6,897	14,289	3,629	10,660	1,799,032	260.84	125.90	(81)	(341)	(30,701)	(204)	(669)	(77,454)
DISTRICT III													
APACHE	114	241	77	164	28,209	247.45	117.05	7	10	1,071	(17)	(52)	(5,534)
COCONINO	246	506	120	386	59,876	243.40	118.33	(15)	(44)	(3,368)	(24)	(66)	(9,562)
NAVAJO	1,325	3,246	930	2,316	363,909	274.65	112.11	(78)	(247)	(24,356)	(50)	(164)	(21,794)
YAVAPAI	704	1,381	319	1,062	175,739	249.63	127.25	0	22	103	35	59	8,599
DISTRICT IV													
LA PAZ	240	529	164	365	61,065	254.44	115.43	0	11	828	(19)	(48)	(6,443)
MOHAVE	1,398	2,917	855	2,062	363,551	260.05	124.63	(23)	(55)	(4,668)	1	0	3,374
YUMA	1,094	2,338	488	1,850	282,812	258.51	120.96	(58)	(177)	(19,712)	(45)	(183)	(23,043)
DISTRICT V													
GILA	702	1,481	500	981	185,814	264.69	125.47	(47)	(101)	(10,879)	(58)	(225)	(21,817)
PINAL	1,902	4,289	1,117	3,172	507,135	266.63	118.24	(42)	(60)	(10,251)	12	27	2,648
DISTRICT VI													
COCHISE	1,012	2,010	534	1,476	258,712	255.64	128.71	(12)	(23)	(3,317)	(14)	(108)	(9,594)
GRAHAM	376	720	224	496	93,860	249.63	130.36	(4)	(3)	(423)	(47)	(137)	(15,478)
GREENLEE	43	91	24	67	11,417	265.51	125.46	(9)	(24)	(2,624)	(4)	(7)	(802)
SANTA CRUZ	254	545	113	432	68,906	271.28	126.43	(7)	(16)	(1,325)	3	2	1,916

1/EXCLUDES: PRIOR MONTH NET TOTALS OF 1,668 CASES; 3,847 RECIPIENTS; \$318,187.
 1/GRANT DIVERSION TOTALS OF: 126 CASES;\$128,811.
 ZERO PAY TOTALS OF 634 CASES; 1,797 RECIPIENTS.

	CURRENT MO. CASES	CURRENT MO. RECIP.	CURRENT MO. DOLLARS	PRIOR MO. CASES	PRIOR MO. RECIP.	PRIOR MO. DOLLARS
PASQUAYAOUI	288	833	\$89,835	24	55	4,203
WM APACHE	679	1,775	\$198,746	9	21	1,012
SALT RIVER	92	321	\$28,791	6	19	1,436
NAVAJO	0	0	\$0	0	0	0
HOPI	157	433	\$37,476	8	26	1,038
TOTAL	1,216	3,362	\$354,848	47	121	\$7,689

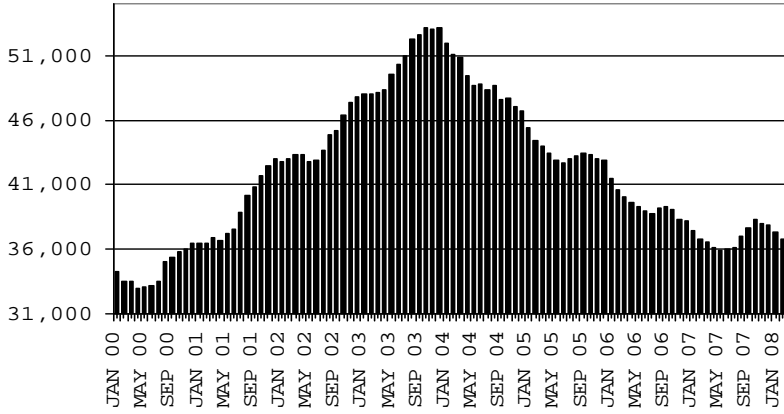
TANF SUMMARY

TABLES 1, 1A, 1B, & 1C

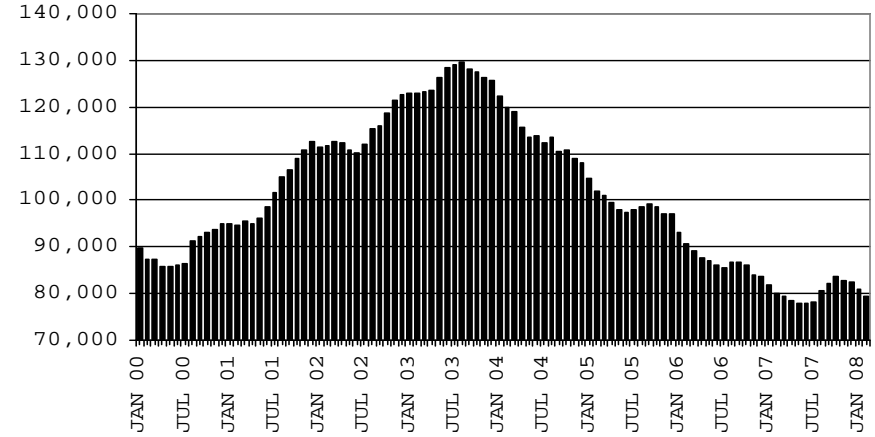
COMPARISON OF CASES, RECIPIENTS, PAYMENTS & AVERAGE PAYMENTS

FOR 2000, 2001, 2002, 2003, 2004, 2005, 2006, & 2007

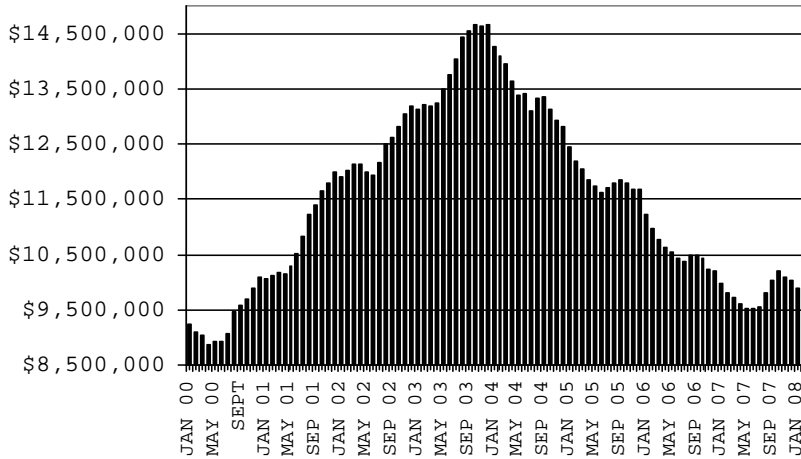
CASES



RECIPIENTS



PAYMENTS



AVERAGE PAYMENTS PER RECIPIENT

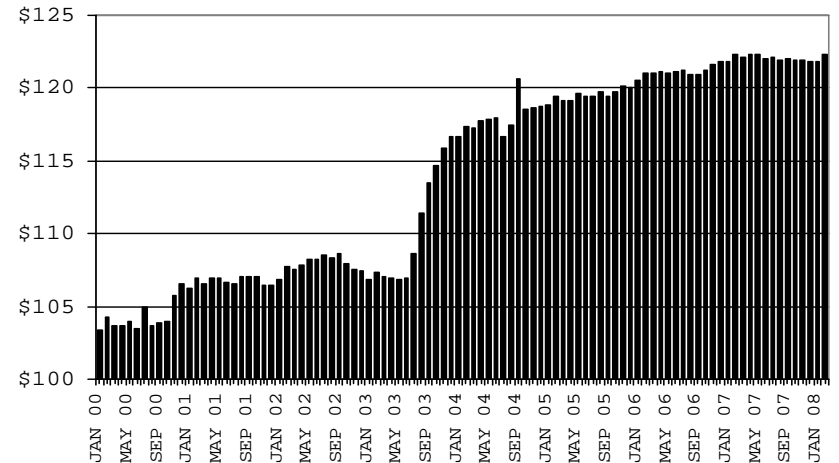


TABLE 1
CASH ASSISTANCE: ARIZONA 1.

	FEBRUARY 2008							CHANGE FROM					
								JANUARY 2008			FEBRUARY 2007		
	FAMILIES (CASES)	(RECIP.)	ADULTS	CHILDREN	TOTAL PAYMENTS	AVERAGE PAYMENT/ CASE	AVERAGE PAYMENT/ RECIP.	FAMILIES (CASES)	PERSONS (RECIP.)	TOTAL PAYMENTS	FAMILIES (CASES)	PERSONS (RECIP.)	TOTAL PAYMENTS
ARIZONA	35,383	75,309	17,706	57,603	9,402,519	265.74	124.85	(484)	(1,363)	(143,881)	(77)	(1,149)	(146,598)
DISTRICT I													
MARICOPA	19,781	42,895	9,495	33,400	5,308,307	268.35	123.75	(173)	(501)	(49,464)	395	607	51,605
DISTRICT II													
PIMA	6,644	13,558	3,351	10,207	1,745,388	262.70	128.73	(44)	(223)	(20,676)	(209)	(701)	(85,300)
DISTRICT III													
APACHE	103	216	66	150	26,711	259.33	123.66	9	17	1,170	(17)	(44)	(4,951)
COCONINO	242	495	115	380	59,465	245.72	120.13	(12)	(40)	(3,092)	(18)	(52)	(8,413)
NAVAJO	1,241	2,917	783	2,134	334,882	269.85	114.80	(67)	(217)	(22,572)	(61)	(215)	(25,464)
YAVAPAI	672	1,298	291	1,007	170,254	253.35	131.17	(8)	(2)	(585)	25	18	5,834
DISTRICT IV													
LA PAZ	222	464	140	324	56,437	254.22	121.63	4	11	660	(22)	(66)	(8,583)
MOHAVE	1,324	2,696	756	1,940	345,930	261.28	128.31	(29)	(62)	(5,829)	(14)	(25)	(185)
YUMA	1,053	2,224	450	1,774	275,339	261.48	123.80	(54)	(148)	(17,305)	(50)	(188)	(23,501)
DISTRICT V													
GILA	661	1,353	429	924	173,451	262.41	128.20	(39)	(73)	(9,351)	(53)	(214)	(21,376)
PINAL	1,824	4,001	1,002	2,999	486,473	266.71	121.59	(41)	(66)	(9,805)	14	(7)	199
DISTRICT VI													
COCHISE	970	1,901	494	1,407	250,779	258.54	131.92	(13)	(24)	(3,166)	(17)	(112)	(9,997)
GRAHAM	359	678	204	474	90,663	252.54	133.72	2	9	580	(48)	(144)	(16,359)
GREENLEE	40	84	21	63	10,636	265.90	126.62	(10)	(25)	(3,034)	(5)	(8)	(1,445)
SANTA CRUZ	247	529	109	420	67,804	274.51	128.17	(9)	(19)	(1,412)	3	2	1,338

1/EXCLUDES: PRIOR MONTH NET TOTALS OF: 981 CASES; 2,335 RECIPIENTS; \$252,001.
GRANT DIVERSION TOTALS OF: 126 CASES; \$128,811
ZERO PAY TOTALS OF 629 CASES; 1,777 RECIPIENTS.

	CURRENT MO. CASES	CURRENT MO. RECIP.	CURRENT MO. DOLLARS	PRIOR MO. CASES	PRIOR MO. RECIP	PRIOR MO. DOLLARS
PASQUAYYAQUI	277	778	85,320	24	55	4,203
WM APACHE	628	1,557	178,854	9	21	1,012
SALT RIVER	92	321	28,791	6	19	1,436
NAVAJO	0	0	0	0	0	0
HOPI	157	433	37,476	8	26	1,038
TOTAL	1,154	3,089	330,441	47	121	7,689

CASES WITH GRANT UNDER \$100 (SEE TABLE 1B).

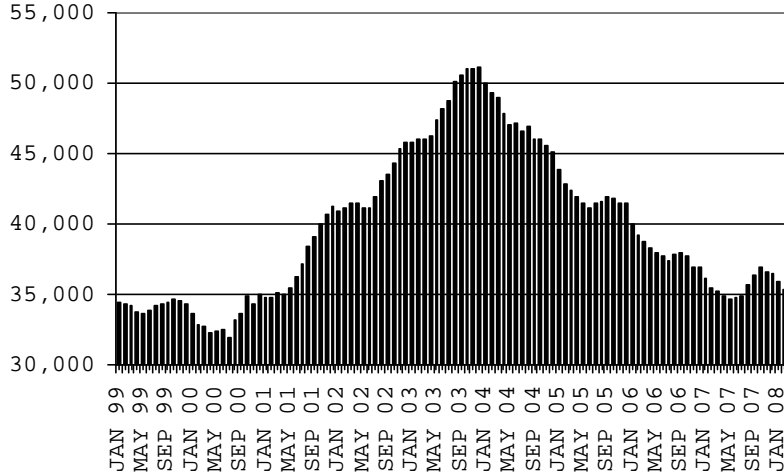
CHART 1

CASH ASSISTANCE PROGRAM

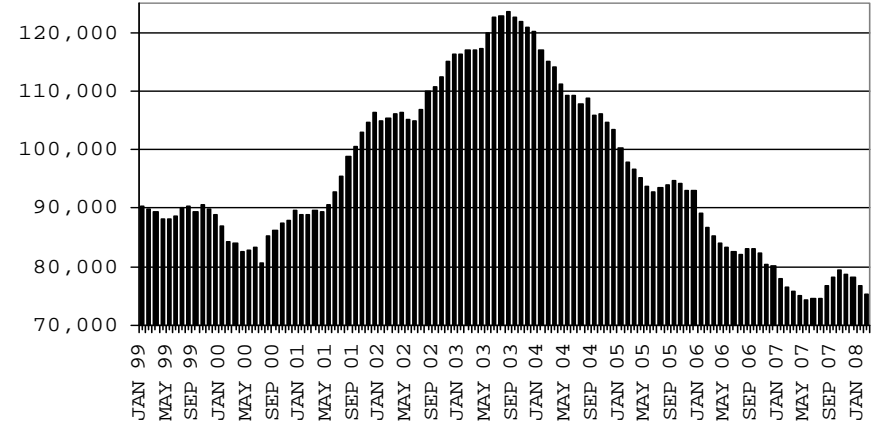
COMPARISON OF CASES, RECIPIENTS, PAYMENTS & AVERAGE PAYMENTS

FOR 1999, 2000, 2001, 2002, 2003, 2004, 2005, 2006 & 2007

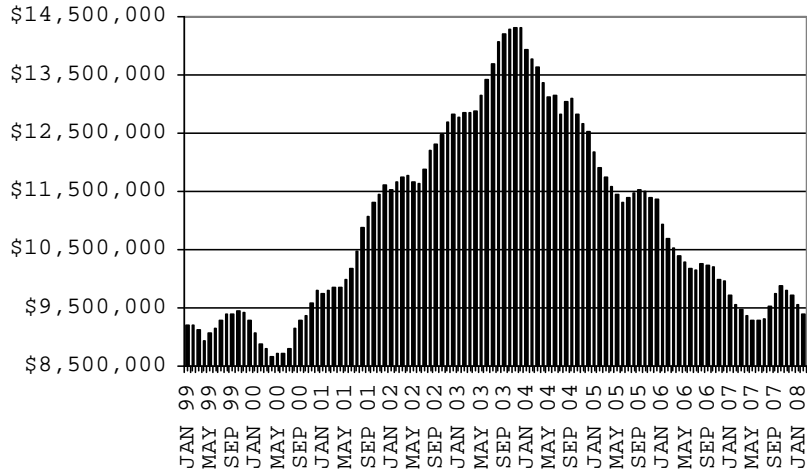
CASES



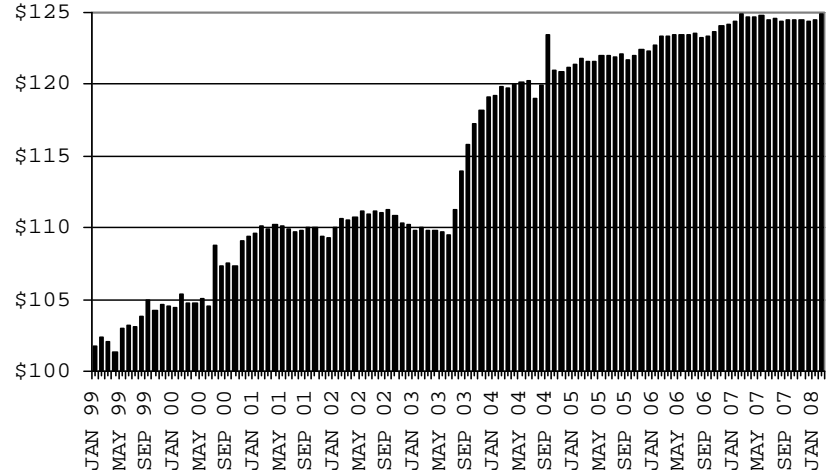
RECIPIENTS



PAYMENTS



AVERAGE PAYMENTS PER RECIPIENT



**TABLE 1A
CA-UP**

CASH ASSISTANCE UNEMPLOYED PARENT PROGRAM: ARIZONA 1

	FEBRUARY 2008							CHANGE FROM			FEBRUARY 2007		
	FAMILIES (CASES)	PERSONS (RECIP.)	ADULTS	CHILDREN	TOTAL PAYMENTS	AVERAGE PAYMENT/ CASE	AVERAGE PAYMENT/ RECIP.	FAMILIES (CASES)	PERSONS (RECIP.)	TOTAL PAYMENTS	FAMILIES (CASES)	PERSONS (RECIP.)	TOTAL PAYMENTS
ARIZONA	777	2,880	1,214	1,666	273,314	351.76	94.90	(39)	(162)	(11,225)	242	839	76,583
DISTRICT I													
MARICOPA	373	1,323	515	808	130,911	350.97	98.95	9	(5)	3,422	159	531	52,872
DISTRICT II													
PIMA	127	469	202	267	44,308	348.88	94.47	(26)	(101)	(8,668)	30	99	8,290
DISTRICT III													
APACHE	4	13	7	6	1,031	257.75	79.31	0	(2)	9	(1)	(8)	(824)
COCONINO	1	4	2	2	214	214.00	53.50	0	1	(133)	(2)	(8)	(829)
NAVAJO	73	306	139	167	28,340	388.22	92.61	(8)	(25)	(1,556)	11	48	3,841
YAVAPAI	12	44	14	30	3,928	327.33	89.27	1	7	339	8	31	2,470
DISTRICT IV													
LA PAZ	13	55	19	36	4,303	331.00	78.24	1	10	571	7	33	2,274
MOHAVE	43	162	76	86	14,791	343.98	91.30	0	0	331	13	39	3,457
YUMA	17	63	26	37	5,713	336.06	90.68	(6)	(29)	(2,464)	5	13	659
DISTRICT V													
GILA	34	117	65	52	11,656	342.82	99.62	(4)	(17)	(1,444)	(1)	(3)	(310)
PINAL	51	220	99	121	18,078	354.47	82.17	(3)	5	(891)	7	41	2,305
DISTRICT VI													
COCHISE	17	62	28	34	5,771	339.47	93.08	(1)	(1)	(336)	1	4	(49)
GRAHAM	8	29	16	13	2,847	355.88	98.17	(3)	(7)	(645)	2	9	1,184
GREENLEE	2	6	3	3	694	347.00	115.67	1	3	347	2	6	694
SANTA CRUZ	2	7	3	4	729	364.50	104.14	0	(1)	(107)	1	4	549

1/EXCLUDES: PRIOR MONTH NET TOTALS OF: 66 CASES; 234 RECIPIENTS; \$22,000.
GRANT DIVERSION TOTALS OF: 0 CASES; \$0.
ZERO PAY TOTALS OF 5 CASES; 20 RECIPIENTS.

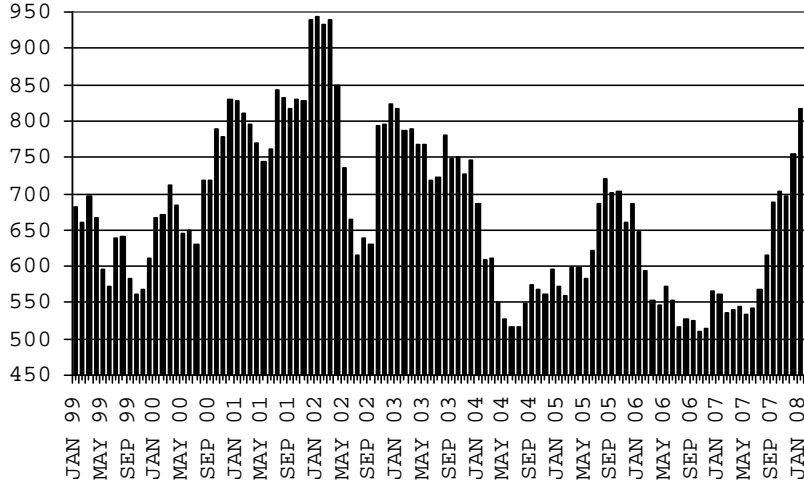
	CURRENT MO. CASES	CURRENT MO. RECIP.	CURRENT MO. DOLLARS	PRIOR MO. CASES	PRIOR MO. RECIP.	PRIOR MO. DOLLARS
PASQUAYAQUI	11	55	4,515	0	0	0
WM APACHE	51	218	19,892	0	0	0
SALT RIVER	0	0	0	0	0	0
NAVAJO	0	0	0	0	0	0
HOPÍ	0	0	0	0	0	0
TOTAL	62	273	24,407	0	0	0

CASES WITH GRANT UNDER \$100 (SEE TABLE 1C).

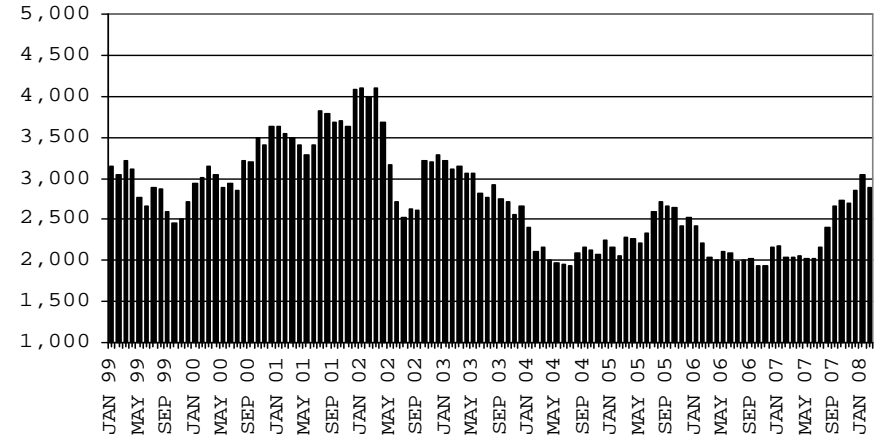
CHART 1A

CASH ASSISTANCE UNEMPLOYED PARENT PROGRAM COMPARISON OF CASES, RECIPIENTS, PAYMENTS & AVERAGE PAYMENTS FOR 1999, 2000, 2001, 2002, 2003, 2004, 2005, 2006 & 2007

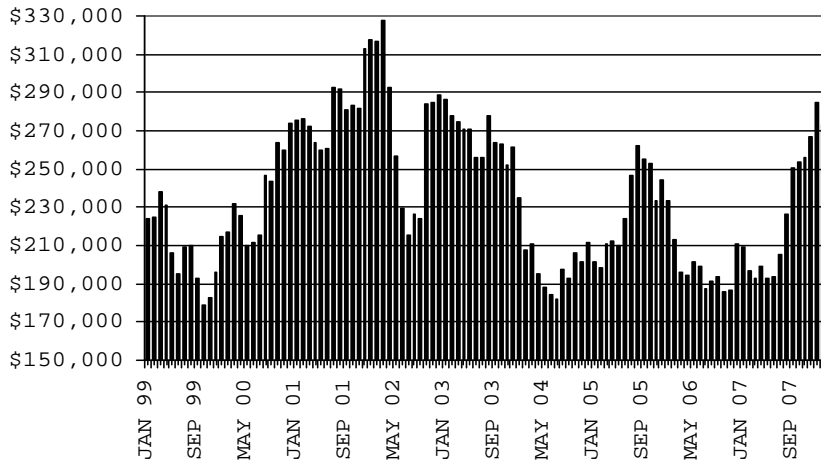
CASES



RECIPIENTS



PAYMENTS



AVERAGE PAYMENTS PER RECIPIENT

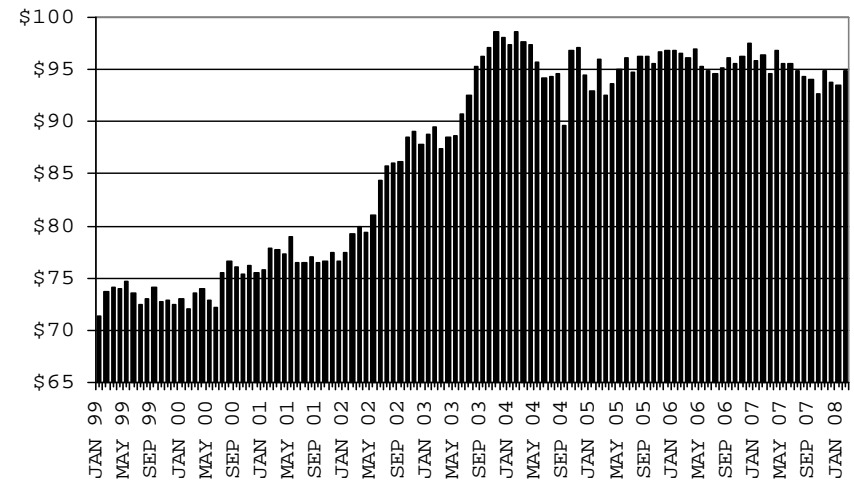


TABLE 1B 1/

CASH ASSISTANCE: ARIZONA
CASES WITH GRANT UNDER \$100

	FEBRUARY 2008							CHANGE FROM			FEBRUARY 2007		
	FAMILIES (CASES)	PERSONS (RECIP.)	ADULTS	CHILDREN	TOTAL PAYMENTS	AVERAGE	AVERAGE	FAMILIES (CASES)	PERSONS (RECIP.)	TOTAL PAYMENTS	FAMILIES (CASES)	PERSONS (RECIP.)	TOTAL PAYMENTS
						PAYMENT/ CASE	PAYMENT/ RECIP.						
ARIZONA	605	1,226	324	902	45,882	75.84	37.42	(43)	(113)	(461)	(119)	(319)	(4,375)
DISTRICT I													
MARICOPA	310	636	152	484	22,833	73.65	35.90	(31)	(72)	282	(79)	(197)	(4,004)
DISTRICT II													
PIMA	125	259	74	185	9,260	74.08	35.75	(11)	(16)	(1,388)	(21)	(61)	(224)
DISTRICT III													
APACHE	7	12	4	8	467	66.71	38.92	(2)	(5)	(108)	1	0	241
COCONINO	3	7	3	4	197	65.67	28.14	(3)	(5)	(143)	(4)	(6)	(320)
NAVAJO	11	23	8	15	687	62.45	29.87	(3)	(5)	(228)	0	3	(171)
YAVAPAI	19	36	12	24	1,486	78.21	41.28	7	17	353	1	7	224
DISTRICT IV													
LA PAZ	5	10	5	5	325	65.00	32.50	(5)	(10)	(403)	(4)	(15)	(134)
MOHAVE	29	50	19	31	2,668	92.00	53.36	4	(2)	668	1	(15)	31
YUMA	23	47	10	37	1,731	75.26	36.83	2	(3)	44	(1)	(12)	(230)
DISTRICT V													
GILA	7	11	6	5	707	101.00	64.27	(3)	(9)	(32)	(3)	(5)	(44)
PINAL	26	65	14	51	2,549	98.04	39.22	1	(2)	410	(10)	(10)	109
DISTRICT VI													
COCHISE	25	47	12	35	2,162	86.48	46.00	2	2	185	3	3	472
GRAHAM	9	13	4	9	350	38.89	26.92	(3)	(5)	(358)	(1)	(2)	(303)
GREENLEE	1	1	0	1	87	87.00	87.00	0	(2)	63	(1)	(5)	(51)
SANTA CRUZ	5	9	1	8	373	74.60	41.44	2	4	194	(1)	(4)	29

EXCLUDES: PRIOR MONTH NET TOTALS OF 593 CASES; 1,161 RECIPIENTS; \$42,666.

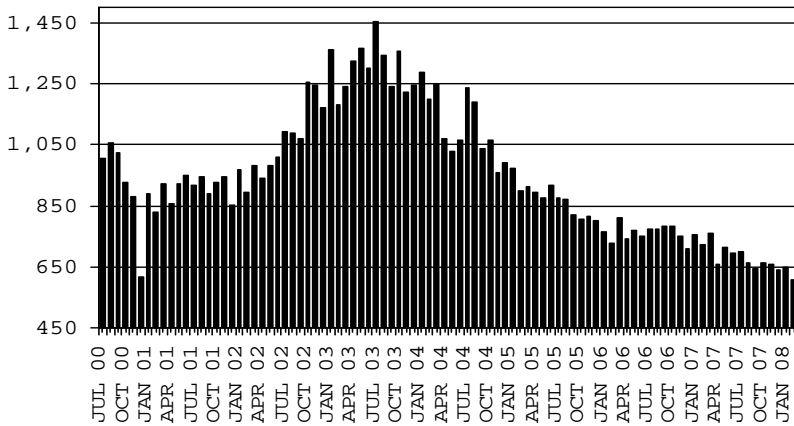
CHART 1B

CASH ASSISTANCE PROGRAM CASES WITH GRANT UNDER \$100

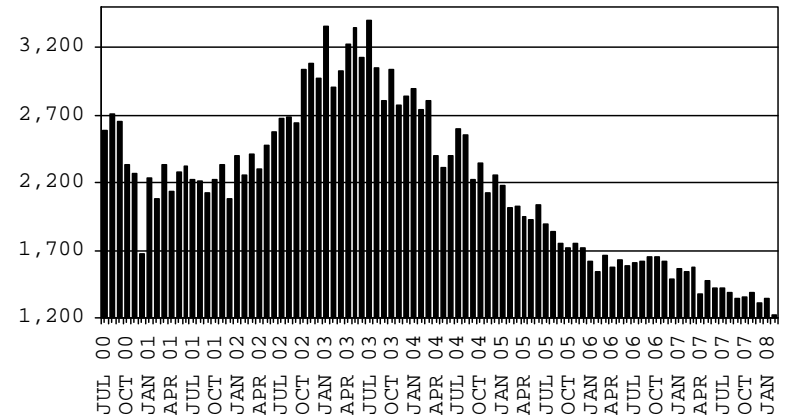
COMPARISON OF CASES, RECIPIENTS, PAYMENTS & AVERAGE PAYMENTS

FOR 2000, 2001, 2002, 2003, 2004, 2005, 2006 & 2007

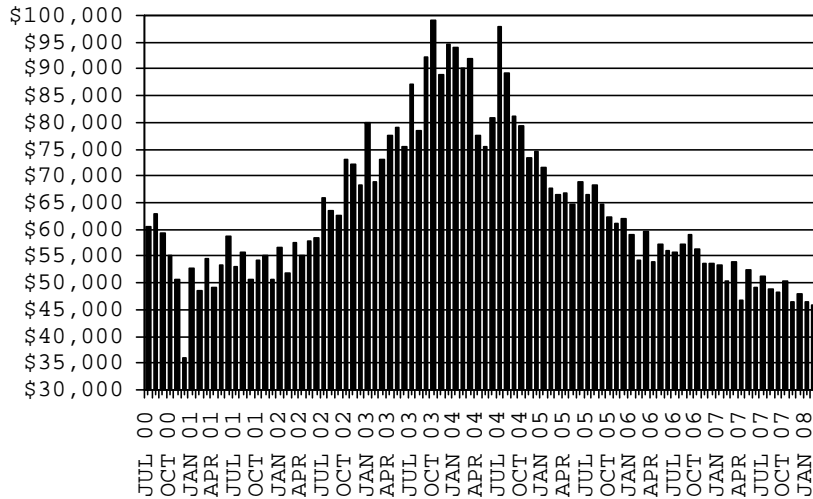
CASES



RECIPIENTS



PAYMENTS



AVERAGE PAYMENTS PER RECIPIENT

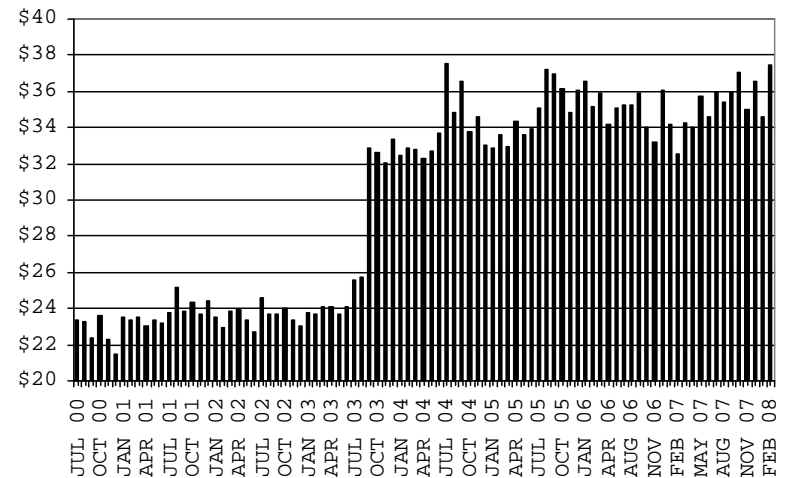


TABLE 1C 1/

CASH ASSISTANCE UNEMPLOYED PARENT PROGRAM: ARIZONA
 CASES WITH GRANT UNDER \$100

	CHANGE FROM												
	FEBRUARY 2008							JANUARY 2008			FEBRUARY 2007		
	FAMILIES (CASES)	PERSONS (RECIP.)	ADULTS	CHILDREN	TOTAL PAYMENTS	AVERAGE PAYMENT/ CASE	AVERAGE PAYMENT/ RECIP.	FAMILIES (CASES)	PERSONS (RECIP.)	TOTAL PAYMENTS	FAMILIES (CASES)	PERSONS (RECIP.)	TOTAL PAYMENTS
ARIZONA	12	35	16	19	692	57.67	19.77	3	14	267	3	8	154
DISTRICT I													
MARICOPA	6	13	4	9	319	53.17	24.54	1	2	82	5	9	275
DISTRICT II													
PIMA	1	3	2	1	76	76.00	25.33	0	(1)	31	(4)	(6)	(220)
DISTRICT III													
APACHE	0	0	0	0	0	0.00	0.00	0	0	0	0	0	0
COCONINO	0	0	0	0	0	0.00	0.00	0	0	0	0	0	0
NAVAJO	0	0	0	0	0	0.00	0.00	0	0	0	0	0	0
YAVAPAI	1	3	2	1	71	71.00	23.67	0	0	(4)	1	3	71
DISTRICT IV													
LA PAZ	0	0	0	0	0	0.00	0.00	0	0	0	0	0	0
MOHAVE	2	9	4	5	162	81.00	18.00	2	9	162	1	1	71
YUMA	1	4	2	2	29	29.00	7.25	0	3	13	1	4	29
DISTRICT V													
GILA	0	0	0	0	0	0.00	0.00	(1)	(2)	(52)	(1)	(3)	(87)
PINAL	1	3	2	1	35	35.00	11.67	1	3	35	1	3	35
DISTRICT VI													
COCHISE	0	0	0	0	0	0.00	0.00	0	0	0	(1)	(3)	(20)
GRAHAM	0	0	0	0	0	0.00	0.00	0	0	0	0	0	0
GREENLEE	0	0	0	0	0	0.00	0.00	0	0	0	0	0	0
SANTA CRUZ	0	0	0	0	0	0.00	0.00	0	0	0	0	0	0

EXCLUDES: PRIOR MONTH NET TOTALS OF 28 CASES; 117 RECIPIENTS; \$1,520.

CHART 1C

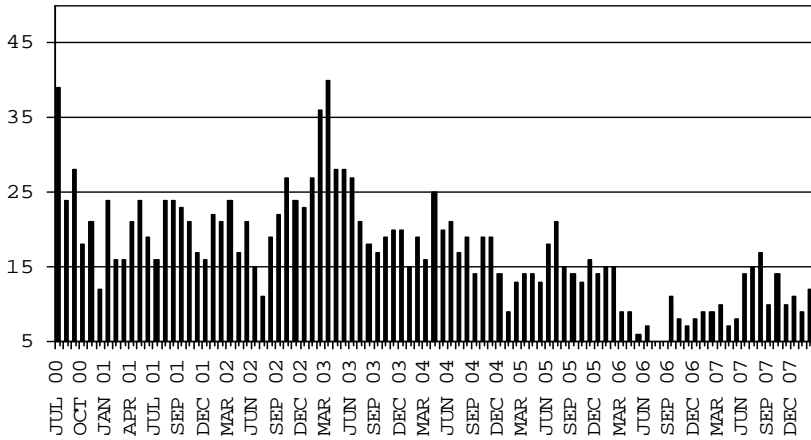
CASH ASSISTANCE UNEMPLOYED PARENT PROGRAM

CASES WITH GRANT UNDER \$100

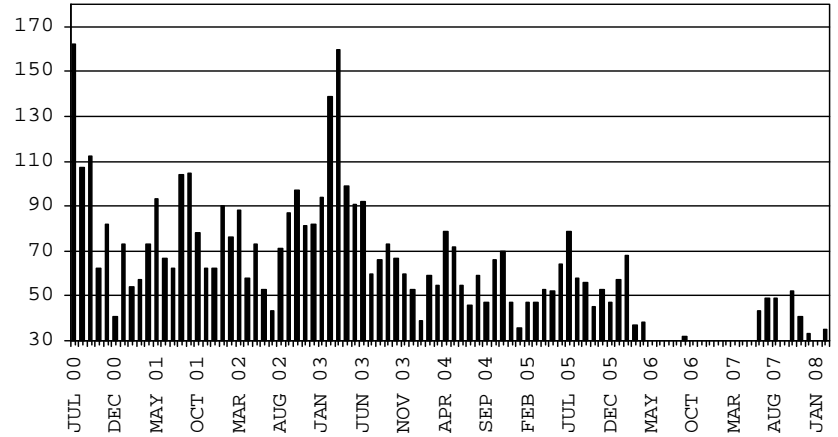
COMPARISON OF CASES, RECIPIENTS, PAYMENTS & AVERAGE PAYMENTS

FOR 2000, 2001, 2002, 2003, 2004, 2005, 2006 & 2007

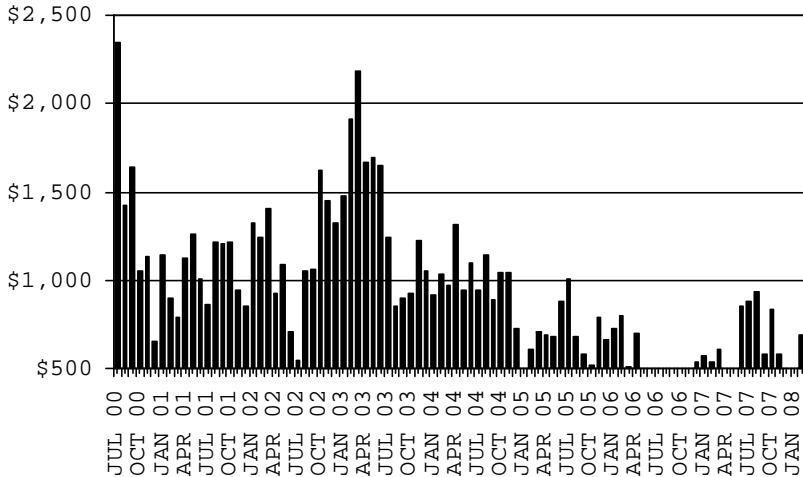
CASES



RECIPIENTS



PAYMENTS



AVERAGE PAYMENTS PER RECIPIENT

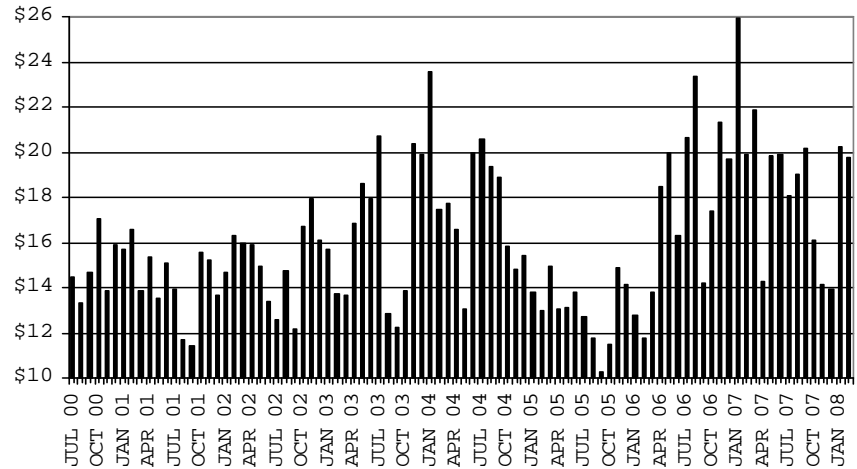


TABLE 2
GENERAL ASSISTANCE: ARIZONA 1,

	CHANGE FROM											
	FEBRUARY 2008					JANUARY 2008			FEBRUARY 2007			
	NUMBER OF CASES	PERSONS (RECIP.)	TOTAL PAYMENTS	AVERAGE PAYMENT/ CASE	AVERAGE PAYMENT/ RECIP.	NUMBER OF CASES	PERSONS (RECIP.)	TOTAL PAYMENTS	NUMBER OF CASES	PERSONS (RECIP.)	TOTAL PAYMENTS	
ARIZONA	1,380	1,383	209,059	151.49	151.16	11	10	2,168	(1)	(7)	(803)	
DISTRICT I												
MARICOPA	541	542	81,864	151.32	151.04	(23)	(23)	(3,538)	(74)	(74)	(11,595)	
DISTRICT II												
PIMA	361	361	53,906	149.32	149.32	16	16	2,321	30	29	4,241	
DISTRICT III												
APACHE	12	13	1,876	156.33	144.31	2	2	262	(7)	(9)	(1,115)	
COCONINO	24	24	3,437	143.21	143.21	5	5	735	9	8	1,172	
NAVAJO	42	42	6,423	152.93	152.93	0	0	0	17	16	2,596	
YAVAPAI	61	62	9,585	157.13	154.60	0	0	0	(5)	(4)	(995)	
DISTRICT IV												
LA PAZ	16	16	2,295	143.44	143.44	3	3	436	9	8	1,089	
MOHAVE	87	87	13,164	151.31	151.31	8	7	1,344	10	10	1,097	
YUMA	27	27	3,891	144.11	144.11	(5)	(5)	(679)	(24)	(24)	(3,124)	
DISTRICT V												
GILA	30	30	4,318	143.93	143.93	0	0	(17)	7	7	1,502	
PINAL	109	109	17,195	157.75	157.75	6	6	1,321	25	24	3,991	
DISTRICT VI												
COCHISE	51	51	8,108	158.98	158.98	(3)	(3)	(299)	2	2	368	
GRAHAM	7	7	1,211	173.00	173.00	1	1	173	(5)	(5)	(800)	
GREENLEE	4	4	627	156.75	156.75	0	0	0	4	4	627	
SANTA CRUZ	8	8	1,159	144.88	144.88	1	1	109	1	1	143	

1/EXCLUDES: PRIOR MONTH NET TOTALS OF : 222 CASES; 222 RECIPIENTS; \$49,654.
REFUGEE RESETTLEMENT PROGRAM: 142 CASES; 178 RECIPIENTS; \$31,472.

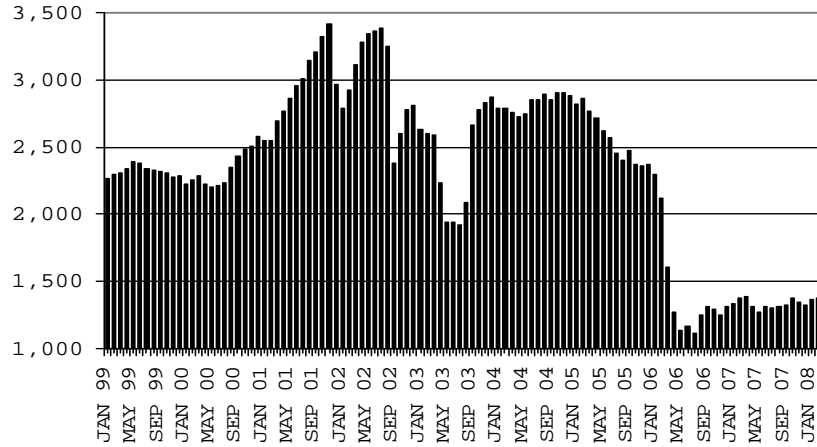
CHART 2

GENERAL ASSISTANCE PROGRAM

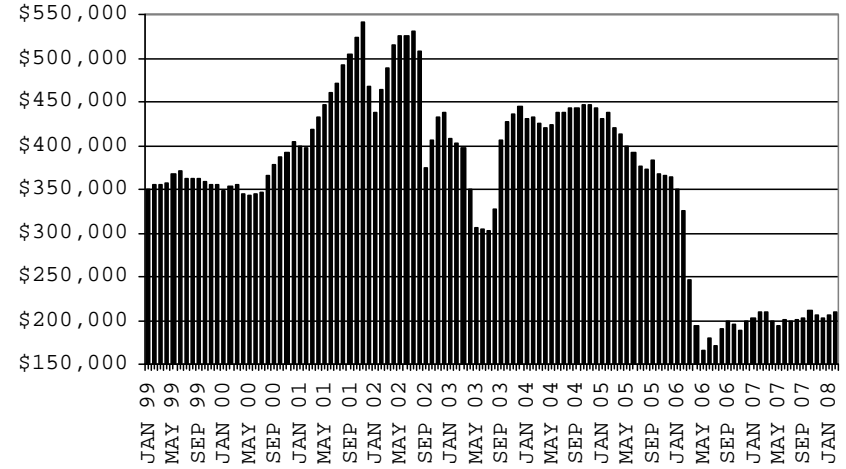
COMPARISON OF CASES, PAYMENTS & AVERAGE PAYMENTS

FOR 1999, 2000, 2001, 2002, 2003, 2004, 2005, 2006 & 2007

CASES



PAYMENTS



AVERAGE PAYMENT PER CASE

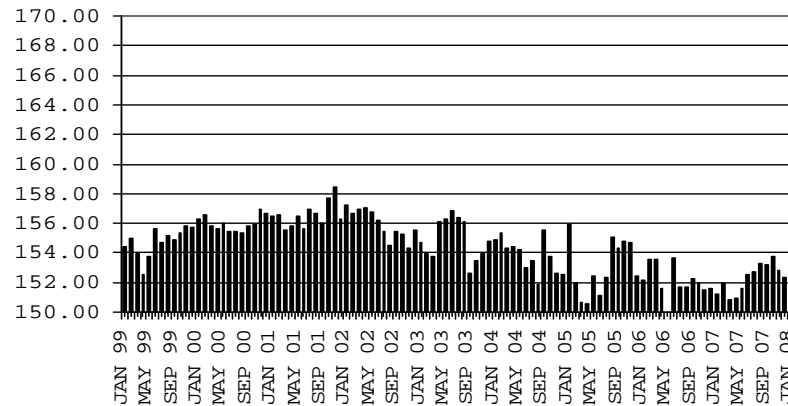


TABLE 4

TUBERCULOSIS CONTROL: ARIZONA 1/

	FEBRUARY 2008					CHANGE FROM			FEBRUARY 2007		
	NUMBER	PERSONS	TOTAL	AVERAGE	AVERAGE	NUMBER	PERSONS	TOTAL	NUMBER	PERSONS	TOTAL
	OF	(RECIP.)	PAYMENTS	PAYMENT/	PAYMENT/	OF	(RECIP.)	PAYMENTS	OF	(RECIP.)	PAYMENTS
	CASES			CASE	RECIP.	CASES			CASES		
ARIZONA	13	13	1,489	114.54	114.54	1	1	417	(1)	(1)	(194)
DISTRICT I											
MARICOPA	12	12	1,381	115.08	115.08	1	1	417	(2)	(2)	(302)
DISTRICT II											
PIMA	0	0	0	0.00	0.00	0	0	0	0	0	0
DISTRICT III	1	1	108	108.00	108.00	0	0	0	1	1	108
APACHE	0	0	0	0.00	0.00	0	0	0	0	0	0
COCONINO	0	0	0	0.00	0.00	0	0	0	0	0	0
NAVAJO	0	0	0	0.00	0.00	0	0	0	0	0	0
YAVAPAI	1	1	108	108.00	108.00	0	0	0	1	1	108
DISTRICT IV	0	0	0	0.00	0.00	0	0	0	0	0	0
LA PAZ	0	0	0	0.00	0.00	0	0	0	0	0	0
MOHAVE	0	0	0	0.00	0.00	0	0	0	0	0	0
YUMA	0	0	0	0.00	0.00	0	0	0	0	0	0
DISTRICT V	0	0	0	0.00	0.00	0	0	0	0	0	0
GILA	0	0	0	0.00	0.00	0	0	0	0	0	0
PINAL	0	0	0	0.00	0.00	0	0	0	0	0	0
DISTRICT VI	0	0	0	0.00	0.00	0	0	0	0	0	0
COCHISE	0	0	0	0.00	0.00	0	0	0	0	0	0
GRAHAM	0	0	0	0.00	0.00	0	0	0	0	0	0
GREENLEE	0	0	0	0.00	0.00	0	0	0	0	0	0
SANTA CRUZ	0	0	0	0.00	0.00	0	0	0	0	0	0

1/EXCLUDES: PRIOR MONTH NET TOTALS OF : 0 CASES; 0 RECIPIENTS; \$0.

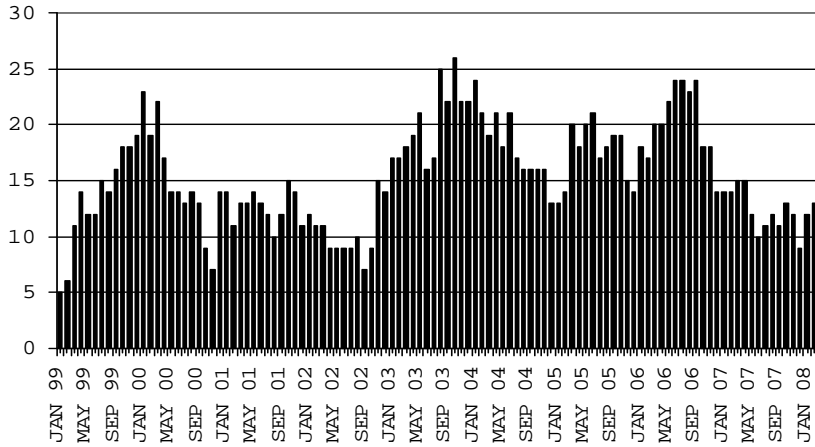
CHART 4

TUBERCULOSIS CONTROL PROGRAM

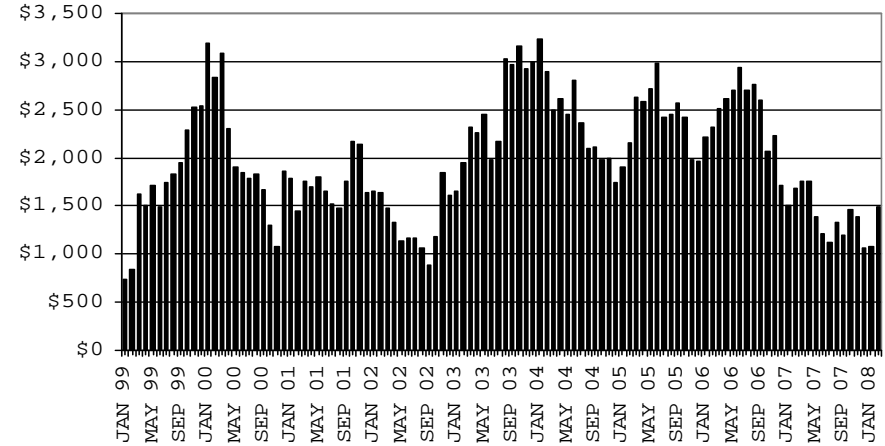
COMPARISON OF CASES, PAYMENTS & AVERAGE PAYMENTS

FOR 1999, 2000, 2001, 2002, 2003, 2004, 2005, 2006 & 2007

CASES



PAYMENTS



AVERAGE PAYMENT PER CASE

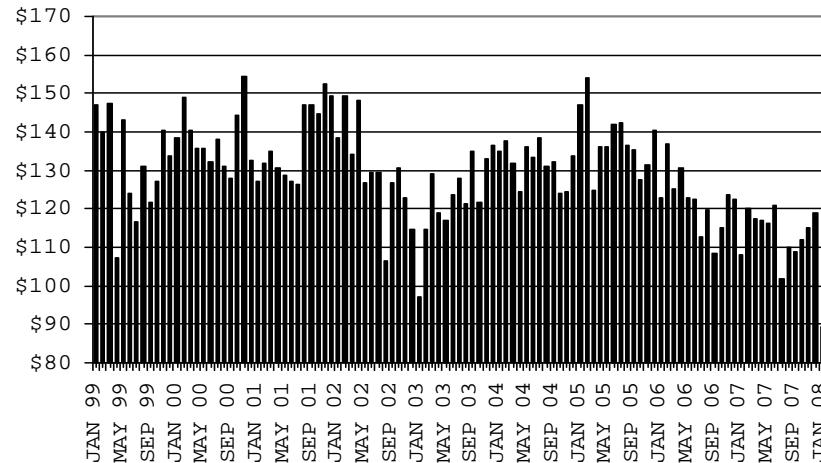


TABLE 5

**SUPPLEMENTAL PAYMENTS PROGRAM: ARIZONA 1,
 BASED ON HB 2535 SPP IS SUSPENDED FROM JULY, 2003 THROUGH JUNE, 2004
 CHANGE FROM**

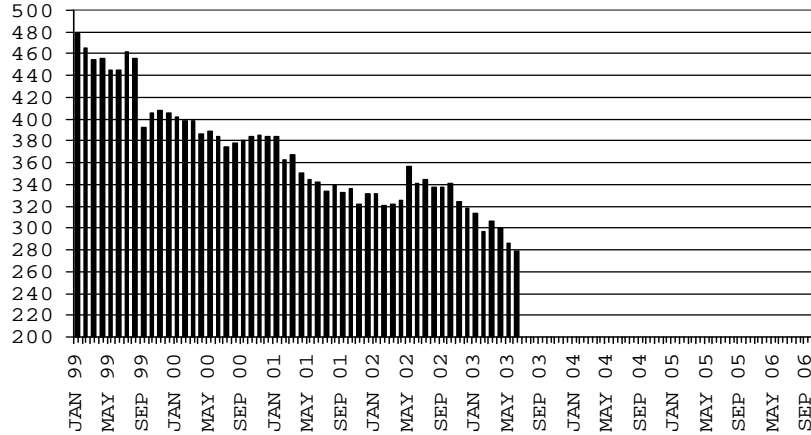
	FEBRUARY 2008			JANUARY 2008		FEBRUARY 2007	
	NUMBER OF PAYMENTS	TOTAL PAYMENTS	AVERAGE PAYMENT	NUMBER OF PAYMENTS	TOTAL PAYMENTS	NUMBER OF PAYMENTS	TOTAL PAYMENTS
ARIZONA	0	0	0	0	0	0	0
DISTRICT I							
MARICOPA	0	0	0	0	0	0	0
DISTRICT II							
PIMA	0	0	0	0	0	0	0
DISTRICT III							
APACHE	0	0	0	0	0	0	0
COCONINO	0	0	0	0	0	0	0
NAVAJO	0	0	0	0	0	0	0
YAVAPAI	0	0	0	0	0	0	0
DISTRICT IV							
LA PAZ	0	0	0	0	0	0	0
MOHAVE	0	0	0	0	0	0	0
YUMA	0	0	0	0	0	0	0
DISTRICT V							
GILA	0	0	0	0	0	0	0
PINAL	0	0	0	0	0	0	0
DISTRICT VI							
COCHISE	0	0	0	0	0	0	0
GRAHAM	0	0	0	0	0	0	0
GREENLEE	0	0	0	0	0	0	0
SANTA CRUZ	0	0	0	0	0	0	0

1/EXCLUDES: PRIOR MONTH NET TOTALS OF : 0 CASES (PERSONS); \$0.
 1/TABLE 5 IS BASED ON THE LOCATION OF THE OFFICE THAT PROCEEDS THE APPLICATION.

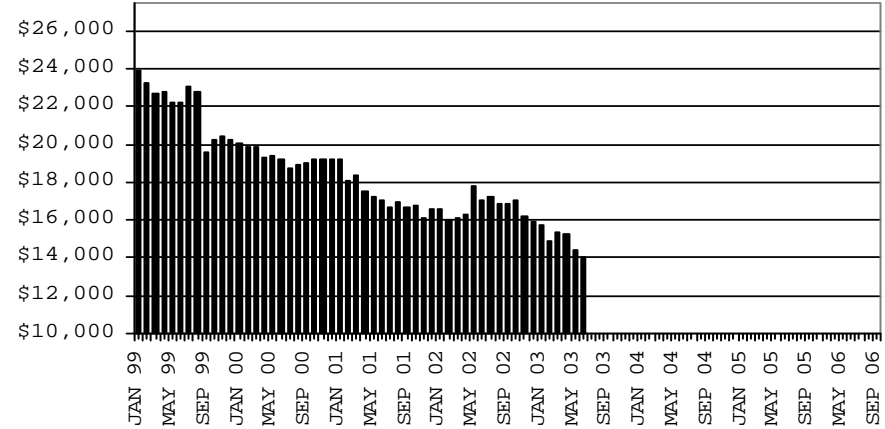
CHART 5

SUPPLEMENTAL PAYMENTS PROGRAM COMPARISON OF CASES, PAYMENTS & AVERAGE PAYMENTS FOR 1999, 2000, 2001, 2002, 2003, 2004, 2005, 2006 & 2007

CASES



PAYMENTS



AVERAGE PAYMENT PER CASE

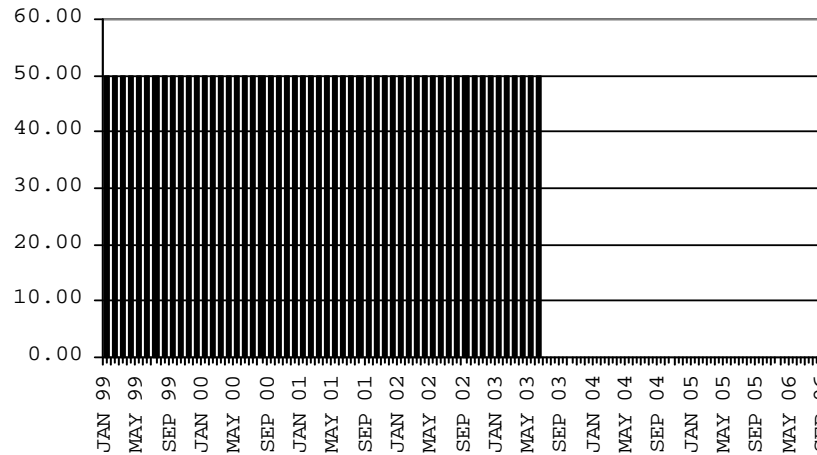


TABLE 6

FOOD STAMP PROGRAM: ARIZONA 1/

	CHANGE FROM											
	FEBRUARY 2008					JANUARY 2008			FEBRUARY 2007			
	HOUSEHOLDS	PERSONS	TOTAL COUPON ISSUANCE	AVERAGE ALLOT./ HOUSEHOLD	AVERAGE ALLOT./ PERSON	HOUSEHOLDS	PERSONS	TOTAL COUPON ISSUANCE	HOUSEHOLDS	PERSONS	TOTAL COUPON ISSUANCE	
ARIZONA	249,625	606,563	60,994,513	244.34	100.56	1,598	4,556	(67,858)	33,070	75,856	9,513,811	
DISTRICT I												
MARICOPA	124,787	304,469	31,225,279	250.23	102.56	1,190	3,230	55,665	17,970	43,090	5,311,504	
DISTRICT II												
PIMA	44,547	101,752	10,247,463	230.04	100.71	358	957	1,220	5,728	11,882	1,552,477	
DISTRICT III												
APACHE	6,262	19,297	1,879,083	300.08	97.38	(17)	73	6,829	135	123	115,518	
COCONINO	5,910	17,024	1,634,602	276.58	96.02	159	419	41,646	864	1,824	250,663	
NAVAJO	9,852	27,565	2,696,130	273.66	97.81	33	118	(363)	1,003	2,677	368,639	
YAVAPAI	6,977	14,246	1,387,449	198.86	97.39	63	173	(6,018)	915	2,040	211,055	
DISTRICT IV												
LA PAZ	1,312	2,852	295,164	224.97	103.49	1	(13)	1,319	52	59	16,276	
MOHAVE	11,769	24,745	2,551,438	216.79	103.11	196	343	21,187	2,060	4,094	493,172	
YUMA	9,676	25,614	2,263,654	233.95	88.38	(308)	(1,002)	(138,268)	932	2,211	199,429	
DISTRICT V												
GILA	16,394	40,476	4,107,532	250.55	101.48	(122)	5	(44,501)	2,543	6,122	745,458	
PINAL	3,630	8,424	859,802	236.86	102.07	(78)	(134)	(25,482)	385	679	90,561	
	12,764	32,052	3,247,730	254.44	101.33	(44)	139	(19,019)	2,158	5,443	654,897	
DISTRICT VI												
COCHISE	12,139	28,523	2,706,719	222.98	94.90	45	253	(6,574)	868	1,734	249,620	
GRAHAM	7,154	15,911	1,532,731	214.25	96.33	39	180	(3,976)	634	1,130	147,521	
GREENLEE	2,118	5,082	487,188	230.02	95.87	(2)	36	(4,177)	73	178	31,947	
SANTA CRUZ	237	486	49,821	210.22	102.51	(1)	7	(781)	(27)	(90)	(3,868)	
	2,630	7,044	636,979	242.20	90.43	9	30	2,360	188	516	74,020	

1/EXCLUDES: PRIOR MONTH NET TOTALS OF : 9,512 CASES; 24,782 RECIPIENTS; \$1,243,965.
 AGED CANCELATIONS: 0 CASES; 0 RECIPIENTS; 0.
 FS COUPON CONVERSIONS: 0 CASES; 0 RECIPIENTS; \$0.
 FS REINSTATED: 0 CASES; \$0.
 FS ZERO PAY: 6,313 CASES; 25,153 RECIPIENTS.

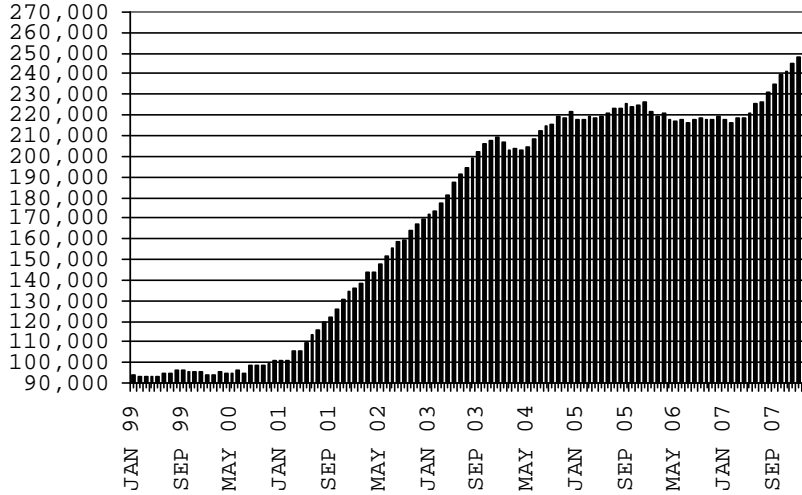
CHART 6

FOOD STAMPS PROGRAM

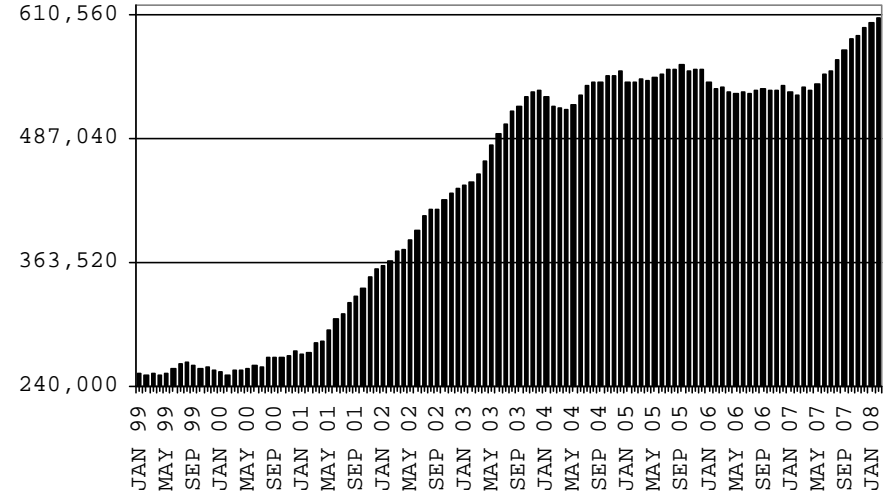
COMPARISON OF HOUSEHOLDS, RECIPIENTS, PAYMENTS & AVERAGE PAYMENTS

FOR 1999, 2000, 2001, 2002, 2003, 2004, 2005, 2006 & 2007

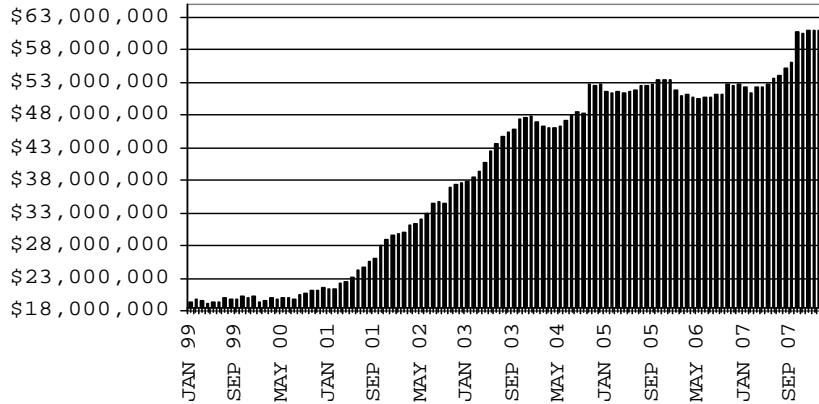
HOUSEHOLDS



RECIPIENTS



TOTAL PAYMENTS



AVERAGE PAYMENT PER HOUSEHOLD

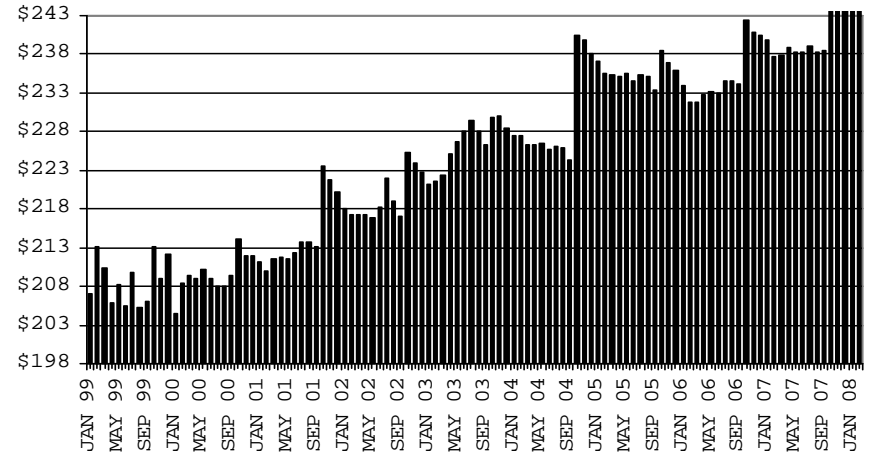


TABLE 7A
MEDICAL ASSISTANCE PROGRAM
RECIPIENTS

FEBRUARY 2008

	SOBRA WOMAN 133% FPL	SOBRA CHILD	ADULT W/O CHILD 100% FPL	FOSTER CARE	1931 36% FPL	FEDERAL EMERGENCY SERVICES	INFANTS	ADULT W/O CHILD 40% FPL	MEDICAL W/SPEND DOWN	SOBRA WOMAN 100% FPL	SOBRA CHILD 100% FPL	TRANSITIONAL MEDICAL T1 - T4	1931 100% FPL	YATI	OTHER	TOTAL CASES
ARIZONA	11,530	62,069	38,341	9,791	259,824	84,871	50,047	93,490	5,081	3,278	161,679	43,947	77,166	230	22,815	924,159
DISTRICT I																
MARICOPA	5,930	34,710	16,410	4,888	136,323	65,625	30,068	41,359	2,688	1,662	90,391	20,671	36,049	114	11,219	498,107
DISTRICT II																
PIMA	1,762	9,526	7,557	2,790	40,543	10,499	7,080	17,256	793	553	25,416	7,130	14,107	72	4,044	149,128
DISTRICT III																
APACHE	243	1,324	860	37	10,406	105	955	4,272	61	87	3,691	988	2,236	1	362	25,628
COCONINO	365	1,410	1,208	115	7,309	510	1,187	3,091	95	91	3,567	1,078	2,070	10	355	22,461
NAVAJO	365	2,042	1,281	114	11,265	332	1,396	4,787	172	106	4,382	1,334	2,806	2	563	30,947
YAVAPAI	436	1,787	1,751	425	5,573	1,593	1,353	2,963	200	111	4,102	1,312	2,430	10	953	24,999
DISTRICT IV																
LA PAZ	36	232	213	20	1,191	190	180	581	39	16	580	217	323	0	152	3,970
MOHAVE	541	2,033	2,019	225	9,468	902	1,537	4,915	298	157	6,402	1,841	3,688	2	1,247	35,275
YUMA	572	2,519	2,125	243	9,152	1,969	1,851	3,111	194	169	7,634	4,307	4,477	1	1,202	39,526
DISTRICT V																
GILA	134	715	559	79	3,903	133	468	1,982	85	35	1,519	517	971	2	300	11,402
PINAL	635	3,679	1,872	507	13,585	1,709	2,222	5,109	237	151	6,835	2,057	3,624	9	1,133	43,364
DISTRICT VI																
COCHISE	248	1,046	1,354	249	6,157	693	863	2,395	142	72	3,552	1,205	2,231	6	739	20,952
GRAHAM	131	436	401	59	2,074	71	396	852	16	27	1,068	491	640	1	127	6,790
GREENLEE	26	43	38	11	285	7	58	102	8	0	117	64	67	0	18	844
SANTA CRUZ	106	567	693	29	2,590	533	433	715	53	41	2,423	735	1,447	0	401	10,766

TABLE 7B

MEDICAL ASSISTANCE PROGRAM

RECIPIENTS

CHANGE FROM

JANUARY 2008

	SOBRA WOMAN 133% FPL	SOBRA CHILD	ADULT W/O CHILD 100% FPL	FOSTER CARE	1931 36% FPL	FEDERAL EMERGENCY SERVICES	INFANTS	ADULT W/O CHILD 40% FPL	MEDICAL W/SPEND DOWN	SOBRA WOMAN 100% FPL	SOBRA CHILD 100% FPL	TRANSITIONAL MEDICAL T1 - T4	1931 100% FPL	YATI	OTHER	TOTAL CASES
ARIZONA	33	207	274	50	743	(207)	(293)	1,658	(178)	74	641	(827)	430	(14)	213	2,804
DISTRICT I																
MARICOPA	27	131	162	51	980	(9)	(261)	988	(115)	69	673	(472)	297	1	156	2,678
DISTRICT II																
PIMA	19	105	58	18	132	(53)	(54)	386	(31)	(1)	168	(208)	164	(7)	(6)	690
DISTRICT III	(26)	(10)	82	(15)	396	2	(19)	140	(5)	(4)	(53)	(312)	30	(2)	14	218
APACHE	(5)	(5)	(8)	(4)	45	(7)	5	(16)	(12)	3	34	(151)	(16)	0	1	(136)
COCONINO	(11)	17	26	(2)	219	(14)	(9)	64	4	(3)	(143)	(52)	(62)	0	12	46
NAVAJO	(3)	(37)	(13)	(1)	21	(10)	(4)	10	11	(15)	(5)	(89)	88	0	(3)	(50)
YAVAPAI	(7)	15	77	(8)	111	33	(11)	82	(8)	11	61	(20)	20	(2)	4	358
DISTRICT IV	7	(24)	(55)	(3)	(519)	(115)	(11)	116	(19)	17	(173)	179	(108)	0	42	(666)
LA PAZ	(3)	(2)	(4)	0	26	(7)	(2)	7	1	3	(7)	(1)	1	0	1	13
MOHAVE	26	(30)	14	0	29	(22)	3	144	(21)	12	0	(117)	(7)	0	30	61
YUMA	(16)	8	(65)	(3)	(574)	(86)	(12)	(35)	1	2	(166)	297	(102)	0	11	(740)
DISTRICT V	15	0	8	6	(269)	(14)	28	3	(14)	1	94	(46)	45	(5)	5	(143)
GILA	2	(21)	6	6	(148)	(3)	(3)	(24)	(14)	3	35	(14)	48	0	12	(115)
PINAL	13	21	2	0	(121)	(11)	31	27	0	(2)	59	(32)	(3)	(5)	(7)	(28)
DISTRICT VI	(9)	5	19	(7)	23	(18)	24	25	6	(8)	(68)	32	2	(1)	2	27
COCHISE	(14)	(4)	34	(2)	(59)	(11)	3	22	15	2	10	46	8	1	(6)	45
GRAHAM	(1)	2	0	(1)	43	(8)	28	(9)	(3)	(5)	(34)	(25)	15	(2)	2	2
GREENLEE	(2)	3	2	1	7	2	(3)	3	4	0	4	1	5	0	0	27
SANTA CRUZ	8	4	(17)	(5)	32	(1)	(4)	9	(10)	(5)	(48)	10	(26)	0	6	(47)

TABLE 7C
MEDICAL ASSISTANCE PROGRAM
RECIPIENTS

CHANGE FROM
FEBRUARY 2007

	SOBRA WOMAN 133% FPL	SOBRA CHILD	ADULT W/O CHILD 100% FPL	FOSTER CARE	1931 36% FPL	FEDERAL EMERGENCY SERVICES	INFANTS	ADULT W/O CHILD 40% FPL	MEDICAL W/SPEND DOWN	SOBRA WOMAN 100% FPL	SOBRA CHILD 100% FPL	TRANSITIONAL MEDICAL T1 - T4	3E 1931 100% FPL	YATI	OTHER	TOTAL CASES
ARIZONA	624	3,415	2,454	1,081	14,270	1,751	747	15,255	(84)	173	13,385	(2,369)	6,441	9	3,003	60,155
DISTRICT I																
MARICOPA	437	2,629	1,360	497	11,031	2,258	405	8,030	(263)	105	9,453	(1,589)	3,751	1	1,435	39,540
DISTRICT II																
PIMA	85	369	443	345	1,948	(53)	157	3,108	208	31	1,432	(170)	1,075	8	528	9,514
DISTRICT III	(58)	(124)	31	87	487	1	74	1,489	(49)	4	435	(662)	213	0	278	2,206
APACHE	(12)	(90)	(62)	8	(262)	13	(31)	177	6	4	(93)	(92)	(57)	1	36	(454)
COCONINO	(48)	72	44	0	265	(3)	39	357	(8)	(14)	(69)	(104)	(103)	4	24	456
NAVAJO	19	(107)	(62)	3	100	0	62	444	11	0	222	(205)	126	(3)	98	708
YAVAPAI	(17)	1	111	76	384	(9)	4	511	(58)	14	375	(261)	247	(2)	120	1,496
DISTRICT IV	78	190	354	17	287	(290)	(147)	1,228	(5)	35	1,133	381	665	(2)	476	4,400
LA PAZ	(19)	16	(8)	3	(66)	(8)	2	28	8	(1)	10	46	(17)	0	29	23
MOHAVE	70	(23)	245	7	737	(96)	(56)	976	1	14	635	241	370	0	242	3,363
YUMA	27	197	117	7	(384)	(186)	(93)	224	(14)	22	488	94	312	(2)	205	1,014
DISTRICT V	25	421	230	133	574	(117)	160	1,034	1	13	749	(204)	458	0	144	3,621
GILA	2	(57)	25	(2)	26	(29)	16	215	2	9	18	(32)	68	(1)	51	311
PINAL	23	478	205	135	548	(88)	144	819	(1)	4	731	(172)	390	1	93	3,310
DISTRICT VI	57	(70)	36	2	(57)	(48)	98	366	24	(15)	183	(125)	279	2	142	874
COCHISE	23	(96)	77	6	27	(15)	18	218	47	(6)	124	1	196	3	70	693
GRAHAM	13	(5)	(23)	(4)	(59)	4	50	86	(25)	2	23	(169)	0	(1)	19	(89)
GREENLEE	7	2	(6)	1	(43)	1	8	(24)	6	(3)	(12)	(6)	1	0	(8)	(76)
SANTA CRUZ	14	29	(12)	(1)	18	(38)	22	86	(4)	(8)	48	49	82	0	61	346

CHART 7

MEDICAL ASSISTANCE PROGRAM COMPARISON OF RECIPIENTS FOR 1999, 2000, 2001, 2002, 2003, 2004, 2005, 2006 & 2007

TOTAL RECIPIENTS

