



State of Arizona

Department of Economic Security

Family Assistance Administration

Statistical Bulletin

April, 2008

Phone: (602) 542-3678

<http://www.azdes.gov/faa/Statistics.asp>

**** STATISTICAL BULLETIN ****
ARIZONA DEPARTMENT OF ECONOMIC SECURITY
FAMILY ASSISTANCE ADMINISTRATION
BOX 6123, PHOENIX, ARIZONA 85005
PHONE (602) 542-3678

APRIL 2008

THIS ISSUE OF THE STATISTICAL BULLETIN COMPARES APRIL 2008 DATA FOR EACH OF THE INDICATED PROGRAMS WITH THE INFORMATION FOR MARCH 2008 AND APRIL 2007. STATEWIDE SUMMARIES OF ACTIVITY WITHIN EACH OF THE SPECIFIC PROGRAMS FOR THIS REPORT PERIOD ARE DISCUSSED BELOW. THE TABLES COMPARE CURRENT AND PRIOR MONTH DATA. DISTRICT AND COUNTY COMPARISONS ARE PROVIDED WITHIN THIS BULLETIN

CASH ASSISTANCE (CA)

COMPARING TO MARCH 2008, APRIL 2008 CASES DECREASED BY 222 (0.63%) TO 34,821. RECIPIENTS DECREASED BY 525 (0.71%) TO 73,754. PAYMENTS DECREASED BY \$66,357 (0.71%) TO \$9,231,713. AVERAGE PAYMENT PER CASE DECREASED BY \$0.21 (0.08%) TO \$265.12. PAYMENT PER RECIPIENT DECREASED BY \$0.01 (0.01%) TO \$125.17.

COMPARING TO APRIL 2007, APRIL 2008 CASES DECREASED BY 64 (0.18%). RECIPIENTS DECREASED BY 1,274 (1.70%). TOTAL PAYMENTS DECREASED BY \$127,008 (1.36%). THE AVERAGE PAYMENT PER CASE DECREASED BY \$3.15 (1.17%). THE AVERAGE PAYMENT PER RECIPIENT INCREASED BY \$0.43 (0.35%).

CASH ASSISTANCE UNEMPLOYED PARENT PROGRAM (CA-UP)

COMPARING TO MARCH 2008, APRIL 2008 CASES INCREASED BY 10 (1.28%) TO 790. RECIPIENTS INCREASED BY 19 (0.67%) TO 2,848. PAYMENTS INCREASED BY \$6,602 (2.46%) TO \$275,449. AVERAGE PAYMENT PER CASE INCREASED BY \$3.99 (1.16%) TO \$348.67. PAYMENT PER RECIPIENT INCREASED BY \$1.69 (1.78%) TO \$96.72.

COMPARING TO APRIL 2007, APRIL 2008 CASES INCREASED BY 245 (44.95%). RECIPIENTS INCREASED BY 790 (38.39%). TOTAL PAYMENTS INCREASED BY \$76,132 (38.20%). THE AVERAGE PAYMENT PER CASE DECREASED BY \$17.05 (4.66%). THE AVERAGE PAYMENT PER RECIPIENT DECREASED BY \$0.13 (0.13%).

CASH ASSISTANCE WITH GRANT UNDER \$100 (CA-MOE)

COMPARING TO MARCH 2008, APRIL 2008 CASES INCREASED BY 18 (2.75%) TO 673. RECIPIENTS INCREASED BY 61 (4.70%) TO 1,358. PAYMENTS INCREASED BY \$981 (2.06%) TO \$48,534. AVERAGE PAYMENT PER CASE DECREASED BY \$0.48 (0.66%) TO \$72.12. AVERAGE PAYMENT PER RECIPIENT DECREASED BY \$0.92 (2.51%) TO \$35.74.

COMPARING TO APRIL 2007, APRIL 2008 CASES INCREASED BY 13 (1.97%). RECIPIENTS DECREASED BY 21 (1.52%). TOTAL PAYMENTS INCREASED BY \$1,642 (3.50%). THE AVERAGE PAYMENT PER CASE INCREASED BY \$1.07 (1.51%). THE AVERAGE PAYMENT PER RECIPIENT INCREASED BY \$1.74 (5.12%).

CASH ASSISTANCE UNEMPLOYED PARENT PROGRAM WITH GRANT UNDER \$100 (CA-UP-MOE) NEW PROGRAM STARTING 7/01

COMPARING TO MARCH 2008, APRIL 2008 CASES INCREASED BY 1 (10.00%) TO 11. RECIPIENTS INCREASED BY 4 (16.00%) TO 29. PAYMENTS INCREASED BY \$75 (14.34%) TO \$598. AVERAGE PAYMENT PER CASE INCREASED BY \$2.06 (3.94%) TO \$54.36. PAYMENT PER RECIPIENT DECREASED BY \$0.30 (1.43%) TO \$20.62.

COMPARING TO APRIL 2007, APRIL 2008 CASES DECREASED BY 649 (98.33%). RECIPIENTS DECREASED BY 1,350 (258.13%). TOTAL PAYMENTS DECREASED BY \$46,294 (98.72%). THE AVERAGE PAYMENT PER CASE DECREASED BY \$16.69 (23.49%). THE AVERAGE PAYMENT PER RECIPIENT DECREASED BY \$13.38 (39.35%).

GENERAL ASSISTANCE (GA)

COMPARING TO MARCH 2008, APRIL 2008 CASES DECREASED BY 9 (0.64%) TO 1,398. RECIPIENTS DECREASED BY 8 (0.57%) TO 1,403. PAYMENTS DECREASED BY \$112 (0.05%) TO \$212,776. AVERAGE PAYMENT PER CASE INCREASED BY \$0.89 (0.59%) TO \$152.20. AVERAGE PAYMENT PER RECIPIENT INCREASED BY \$0.78 (0.52%) TO \$151.66.

COMPARING TO APRIL 2007, APRIL 2008 CASES INCREASED BY 84 (6.39%). RECIPIENTS INCREASED BY 80 (6.05%). TOTAL PAYMENTS INCREASED BY \$13,055 (6.54%). THE AVERAGE PAYMENT PER CASE INCREASED BY \$0.21 (0.14%). THE AVERAGE PAYMENT PER RECIPIENT INCREASED BY \$0.70 (0.46%).

TUBERCULOSIS CONTROL PROGRAM (TC)

COMPARING TO MARCH 2008, APRIL 2008 CASES DECREASED BY 4 (30.77%) TO 9. RECIPIENTS DECREASED BY 4 (30.77%) TO 9. PAYMENTS DECREASED BY \$402 (26.73%) TO \$1,102. AVERAGE PAYMENT PER CASE INCREASED BY \$6.75 (5.83%) TO \$122.44. AVERAGE PAYMENT PER RECIPIENT INCREASED BY \$6.75 (5.83%) TO \$122.44.

COMPARING TO APRIL 2007, APRIL 2008 CASES DECREASED BY 6 (40.00%). RECIPIENTS DECREASED BY 6 (40.00%). TOTAL PAYMENTS DECREASED BY \$655 (37.28%). THE AVERAGE PAYMENT PER CASE INCREASED BY \$5.31 (4.53%). THE AVERAGE PAYMENT PER RECIPIENT INCREASED BY \$5.31 (4.53%).

FOOD STAMP PROGRAM (FS)

COMPARING TO MARCH 2008, APRIL 2008 FOOD STAMP HOUSEHOLDS INCREASED BY 3,789 (1.48%) TO 259,001. PERSONS RECEIVING FOOD STAMPS INCREASED BY 8,108 (1.31%) TO 626,555. TOTAL COUPON ISSUANCE INCREASED BY \$765,919 (1.23%) TO \$63,035,595. THE AVERAGE HOUSEHOLD ALLOTMENT DECREASED BY \$0.61 (0.25%) TO \$243.38. THE AVERAGE ALLOTMENT PER PERSON DECREASED BY \$0.08 (0.08%) TO \$100.61.

COMPARING TO APRIL 2007, APRIL 2008 FOOD STAMP HOUSEHOLDS INCREASED BY 40,384 (18.47%). PERSONS RECEIVING FOOD STAMPS INCREASED BY 90,911 (16.97%). TOTAL COUPON ISSUANCE INCREASED BY \$10,809,610 (20.70%). THE AVERAGE ALLOTMENT PER HOUSEHOLD INCREASED BY \$4.49 (1.88%). THE AVERAGE ALLOTMENT PER PERSON INCREASED BY \$3.11 (3.19%).

MEDICAL ASSISTANCE PROGRAM (MA) NEW TABLE INCLUDES PROP. 204 CATEGORIES

COMPARING TO MARCH 2008, APRIL 2008 TOTAL RECIPIENTS TOTAL RECIPIENTS INCREASED BY 2,726 (0.29%). SOBRA WOMEN AT 140% FPL DECREASED BY 181 (1.52%). SOBRA CHILDREN DECREASED BY 763 (1.21%). ADULTS W/O CHILD AT 100% INCREASED BY 38 (0.10%). FOSTER CARE INCREASED BY 104 (1.05%). 1931 AT 36% FPL INCREASED BY 1,126 (0.43%). EMERGENCY SERVICES DECREASED BY 731 (0.85%). INFANTS DECREASED BY 452 (0.90%). ADULT W/O CHILD AT 140% INCREASED BY 913 (0.95%). MEDICAL W/SPEND DOWN DECREASED BY 132 (2.46%). SOBRA WOMAN AT 100% INCREASED BY 132 (3.87%). SOBRA CHILD AT 100% INCREASED BY 1,766 (1.08%). TRANSITIONAL MEDICAL DECREASED BY 245 (0.57%). 1931 AT 100% INCREASED BY 974 (1.24%). YATI INCREASED BY 4 (1.65%). ALL OTHER CATEGORIES INCREASED BY 173 (0.75%).

COMPARING TO APRIL 2007, APRIL 2008 TOTAL RECIPIENTS TOTAL RECIPIENTS INCREASED BY 69,243 (7.94%). SOBRA WOMEN AT 140% FPL INCREASED BY 477 (4.25%). SOBRA CHILDREN INCREASED BY 3,427 (5.84%). ADULTS W/O CHILD AT 100% INCREASED BY 3,340 (9.28%). FOSTER CARE INCREASED BY 1,125 (12.71%). 1931 AT 36% FPL INCREASED BY 17,690 (7.13%). EMERGENCY SERVICES INCREASED BY 1,003 (1.19%). INFANTS INCREASED BY 629 (1.27%). ADULT W/O CHILD AT 140% INCREASED BY 17,766 (22.41%). MEDICAL W/SPEND DOWN INCREASED BY 19 (0.36%). SOBRA WOMAN AT 100% INCREASED BY 223 (6.71%). SOBRA CHILD AT 100% INCREASED BY 14,270 (9.42%). TRANSITIONAL MEDICAL DECREASED BY 1,429 (3.22%). 1931 AT 100% INCREASED BY 7,544 (10.47%). YATI INCREASED BY 20 (8.85%). ALL OTHER CATEGORIES INCREASED BY 3,139 (15.66%).

TANF SUMMARY

TABLES 1, 1A, 1B, & 1C: ARIZONA 1

	APRIL 2008							MARCH 2008			CHANGE FROM APRIL 2007		
	FAMILIES (CASES)	PERSONS (RECIP.)	ADULTS	CHILDREN	TOTAL PAYMENTS	AVERAGE PAYMENT/ CASE	AVERAGE PAYMENT/ RECIP.	FAMILIES (CASES)	PERSONS (RECIP.)	TOTAL PAYMENTS	FAMILIES (CASES)	PERSONS (RECIP.)	TOTAL PAYMENTS
	ARIZONA	36,295	77,989	18,695	59,294	9,556,294	263.30	122.53	(193)	(441)	(58,699)	198	(502)
DISTRICT I													
MARICOPA	20,383	44,439	9,939	34,500	5,419,237	265.87	121.95	(10)	(72)	(4,177)	658	1,146	134,328
DISTRICT II													
PIMA	6,799	14,008	3,555	10,453	1,764,770	259.56	125.98	(82)	(189)	(20,609)	(139)	(602)	(67,843)
DISTRICT III													
APACHE	97	180	55	125	24,192	249.40	134.40	(11)	(36)	(3,126)	(30)	(108)	(7,620)
COCONINO	232	490	120	370	56,759	244.65	115.83	(5)	4	(1,201)	(33)	(63)	(9,531)
NAVAJO	1,296	3,196	927	2,269	359,373	277.29	112.44	(6)	2	(1,573)	(77)	(218)	(25,825)
YAVAPAI	679	1,318	289	1,029	165,655	243.97	125.69	(5)	(3)	(3,722)	27	23	1,986
DISTRICT IV													
LA PAZ	234	524	167	357	58,319	249.23	111.30	(1)	(7)	(1,952)	(12)	(31)	(8,058)
MOHAVE	1,386	2,895	840	2,055	357,321	257.81	123.43	3	37	(994)	28	66	4,829
YUMA	1,032	2,210	452	1,758	268,102	259.79	121.31	(19)	(25)	(5,027)	(62)	(185)	(22,109)
DISTRICT V													
GILA	673	1,361	449	912	175,334	260.53	128.83	(3)	(33)	(1,430)	(64)	(236)	(20,969)
PINAL	1,871	4,161	1,072	3,089	495,048	264.59	118.97	(29)	(76)	(8,427)	(15)	(54)	(2,844)
DISTRICT VI													
COCHISE	966	1,914	506	1,408	247,678	256.40	129.40	(13)	(27)	(3,824)	(43)	(147)	(12,753)
GRAHAM	358	675	195	480	87,796	245.24	130.07	(15)	(38)	(4,621)	(30)	(78)	(10,142)
GREENLEE	35	75	17	58	9,171	262.03	122.28	(5)	(8)	(1,204)	(15)	(29)	(4,391)
SANTA CRUZ	254	543	112	431	67,539	265.90	124.38	8	30	3,188	5	14	1,935

1/EXCLUDES: PRIOR MONTH NET TOTALS OF 1,753 CASES; 4,175 RECIPIENTS; \$362,840.
 1/GRANT DIVERSION TOTALS OF: 265 CASES; \$271,515.
 ZERO PAY TOTALS OF 833 CASES; 2,373 RECIPIENTS.

	CURRENT MO. CASES	CURRENT MO. RECIP.	CURRENT MO. DOLLARS	PRIOR MO. CASES	PRIOR MO. RECIP.	PRIOR MO. DOLLARS
PASQUAYAOUI	295	819	\$88,354	13	34	2,716
WM APACHE	677	1,804	\$203,436	21	56	3,134
SALT RIVER	84	282	\$25,685	10	29	1,472
NAVAJO	0	0	\$0	0	0	0
HOPAI	150	429	\$35,050	7	20	361
TOTAL	1,206	3,334	\$352,525	51	139	\$7,683

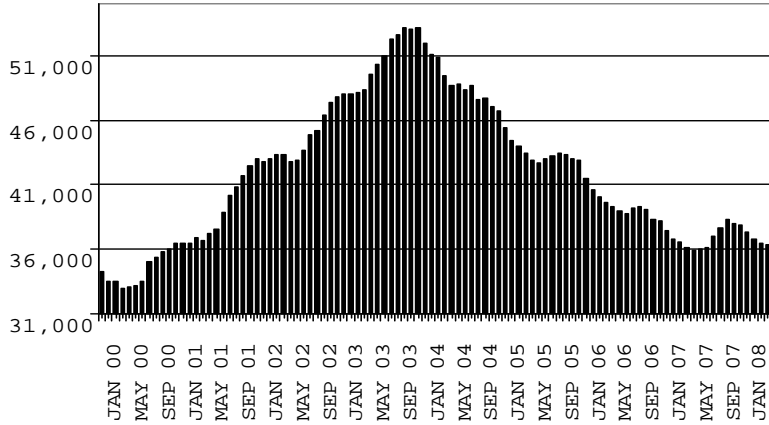
TANF SUMMARY

TABLES 1, 1A, 1B, & 1C

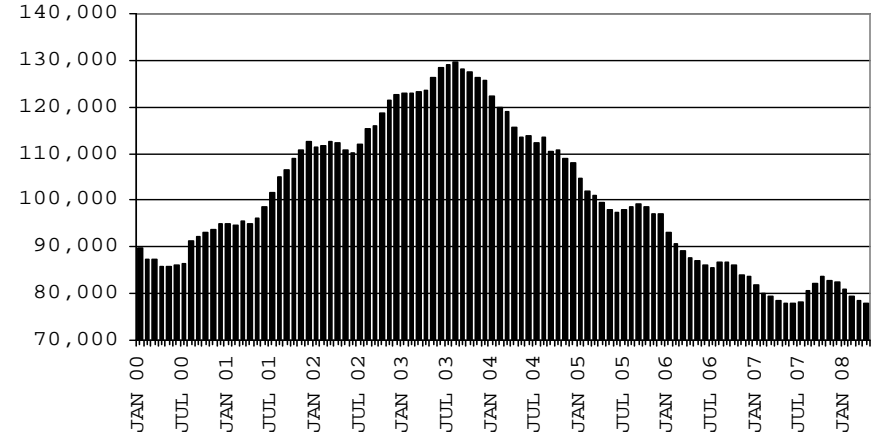
COMPARISON OF CASES, RECIPIENTS, PAYMENTS & AVERAGE PAYMENTS

FOR 2000, 2001, 2002, 2003, 2004, 2005, 2006, & 2007

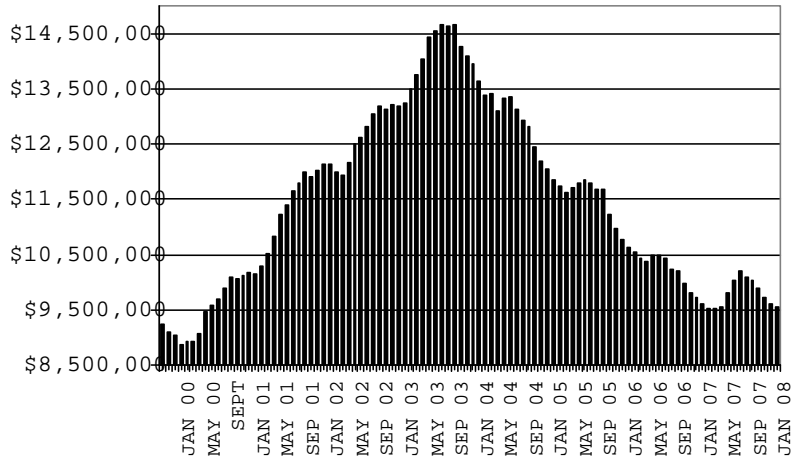
CASES



RECIPIENTS



PAYMENTS



AVERAGE PAYMENTS PER RECIPIENT

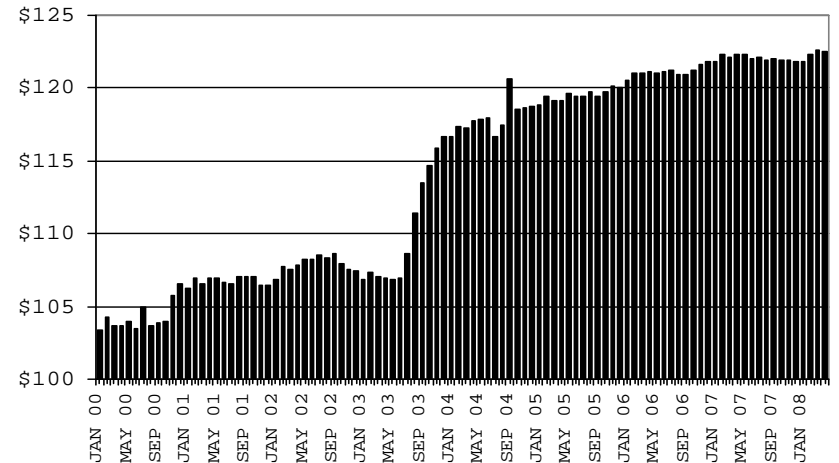


TABLE 1
CASH ASSISTANCE: ARIZONA 1.

	APRIL 2008							CHANGE FROM			APRIL 2007		
								MARCH 2008					
	FAMILIES (CASES)	(RECIP.)	ADULTS	CHILDREN	TOTAL PAYMENTS	AVERAGE PAYMENT/ CASE	AVERAGE PAYMENT/ RECIP.	FAMILIES (CASES)	PERSONS (RECIP.)	TOTAL PAYMENTS	FAMILIES (CASES)	PERSONS (RECIP.)	TOTAL PAYMENTS
ARIZONA	34,821	73,754	17,134	56,620	9,231,713	265.12	125.17	(222)	(525)	(66,357)	(64)	(1,274)	(127,008)
DISTRICT I													
MARICOPA	19,659	42,503	9,309	33,194	5,271,539	268.15	124.03	(8)	(26)	836	523	809	95,031
DISTRICT II													
PIMA	6,536	13,232	3,272	9,960	1,707,665	261.27	129.06	(78)	(199)	(23,603)	(199)	(788)	(84,730)
DISTRICT III													
APACHE	92	167	49	118	23,167	251.82	138.72	(11)	(34)	(3,016)	(23)	(90)	(6,882)
COCONINO	219	457	105	352	54,453	248.64	119.15	(13)	(17)	(2,821)	(37)	(75)	(10,670)
NAVAJO	1,195	2,796	748	2,048	322,902	270.21	115.49	(27)	(76)	(8,659)	(99)	(317)	(35,372)
YAVAPAI	646	1,231	262	969	159,866	247.47	129.87	(10)	(19)	(4,919)	23	2	1,172
DISTRICT IV													
LA PAZ	212	460	139	321	54,616	257.62	118.73	(6)	(15)	(1,823)	(21)	(45)	(7,742)
MOHAVE	1,300	2,630	725	1,905	336,389	258.76	127.90	(5)	8	(3,931)	2	(20)	(1,384)
YUMA	999	2,115	425	1,690	262,520	262.78	124.12	(16)	(28)	(5,344)	(58)	(172)	(19,983)
DISTRICT V													
GILA	638	1,261	390	871	165,182	258.91	130.99	7	(6)	322	(56)	(207)	(19,471)
PINAL	1,779	3,848	939	2,909	472,327	265.50	122.75	(28)	(72)	(7,841)	(27)	(132)	(9,506)
DISTRICT VI													
COCHISE	923	1,816	471	1,345	240,452	260.51	132.41	(19)	(39)	(4,073)	(48)	(138)	(13,941)
GRAHAM	342	639	178	461	85,186	249.08	133.31	(15)	(34)	(3,953)	(37)	(93)	(11,452)
GREENLEE	33	72	16	56	9,071	274.88	125.99	(4)	(4)	(511)	(15)	(28)	(4,063)
SANTA CRUZ	248	527	106	421	66,378	267.65	125.95	11	36	2,979	8	20	1,985

1/EXCLUDES: PRIOR MONTH NET TOTALS OF: 947 CASES; 2,301 RECIPIENTS; \$282,147.
GRANT DIVERSION TOTALS OF: 265 CASES; \$271,515
ZERO PAY TOTALS OF 826 CASES; 2,345 RECIPIENTS.

	CURRENT MO. CASES	CURRENT MO. RECIP.	CURRENT MO. DOLLARS	PRIOR MO. CASES	PRIOR MO. RECIP	PRIOR MO. DOLLARS
PASQUAYAAQUI	282	761	83,876	12	28	2,264
WM APACHE	615	1,527	177,786	15	35	2,211
SALT RIVER	84	282	25,685	10	29	1,472
NAVAJO	0	0	0	0	0	0
HOPAI	150	429	35,050	7	20	361
TOTAL	1,131	2,999	322,397	44	112	6,308

CASES WITH GRANT UNDER \$100 (SEE TABLE 1B).

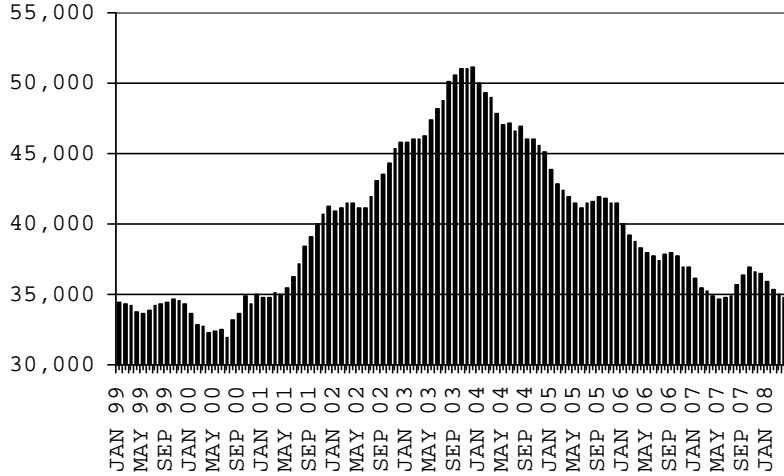
CHART 1

CASH ASSISTANCE PROGRAM

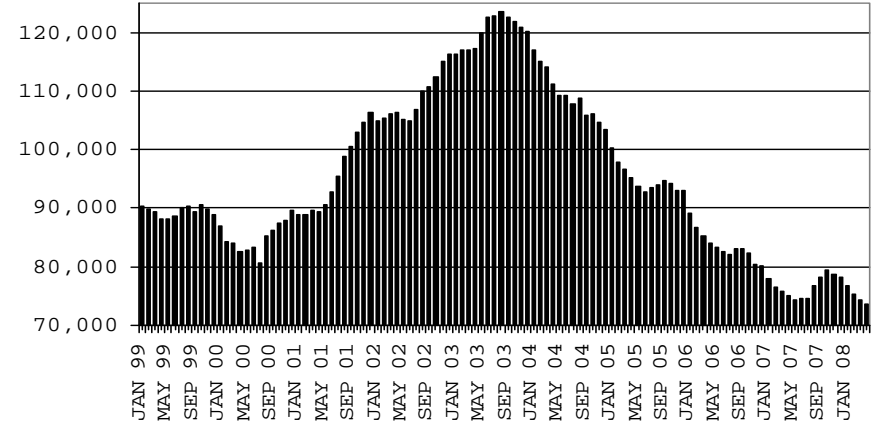
COMPARISON OF CASES, RECIPIENTS, PAYMENTS & AVERAGE PAYMENTS

FOR 1999, 2000, 2001, 2002, 2003, 2004, 2005, 2006 & 2007

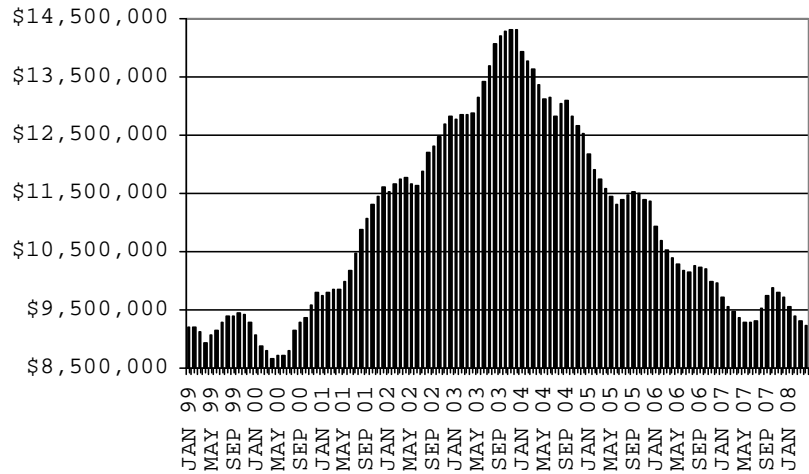
CASES



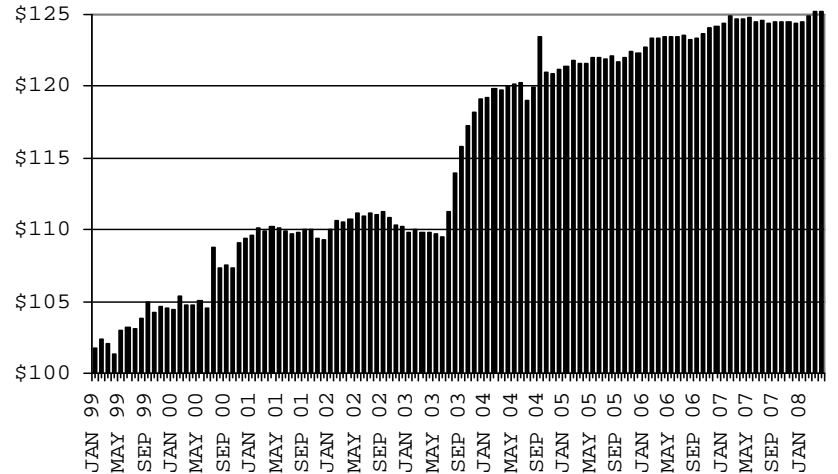
RECIPIENTS



PAYMENTS



AVERAGE PAYMENTS PER RECIPIENT



**TABLE 1A
CA-UP**

CASH ASSISTANCE UNEMPLOYED PARENT PROGRAM: ARIZONA 1

	APRIL 2008							CHANGE FROM			MARCH 2008			APRIL 2007		
	FAMILIES (CASES)	PERSONS (RECIP.)	ADULTS	CHILDREN	TOTAL PAYMENTS	AVERAGE PAYMENT/ CASE	AVERAGE PAYMENT/ RECIP.	FAMILIES (CASES)	PERSONS (RECIP.)	TOTAL PAYMENTS	FAMILIES (CASES)	PERSONS (RECIP.)	TOTAL PAYMENTS			
ARIZONA	790	2,848	1,183	1,665	275,449	348.67	96.72	10	19	6,602	245	790	76,132			
DISTRICT I																
MARICOPA	365	1,209	452	757	123,030	337.07	101.76	(16)	(84)	(6,080)	141	380	40,223			
DISTRICT II																
PIMA	131	505	207	298	46,869	357.78	92.81	(2)	6	2,458	43	161	14,642			
DISTRICT III																
APACHE	2	8	4	4	836	418.00	104.50	0	0	0	(2)	(7)	(534)			
COCONINO	5	18	10	8	1,785	357.00	99.17	3	11	1,269	2	7	999			
NAVAJO	92	385	173	212	35,489	385.75	92.18	19	74	6,603	26	111	9,493			
YAVAPAI	13	46	15	31	4,441	341.62	96.54	4	13	1,289	2	13	626			
DISTRICT IV																
LA PAZ	11	41	16	25	3,117	283.36	76.02	1	(2)	(268)	0	(2)	(810)			
MOHAVE	47	189	88	101	17,906	380.98	94.74	5	24	2,756	12	54	5,541			
YUMA	12	45	17	28	4,096	341.33	91.02	0	4	527	(3)	(16)	(2,011)			
DISTRICT V																
GILA	29	91	54	37	9,627	331.97	105.79	(6)	(21)	(1,377)	(4)	(17)	(1,284)			
PINAL	60	235	109	126	20,172	336.20	85.84	4	1	153	23	96	7,596			
DISTRICT VI																
COCHISE	15	49	23	26	5,290	352.67	107.96	1	3	346	4	7	1,134			
GRAHAM	6	20	11	9	2,040	340.00	102.00	(2)	(8)	(784)	3	9	1,057			
GREENLEE	0	0	0	0	0	0.00	0.00	(2)	(6)	(694)	(1)	(3)	(347)			
SANTA CRUZ	2	7	4	3	751	375.50	107.29	1	4	404	(1)	(3)	(193)			

1/EXCLUDES: PRIOR MONTH NET TOTALS OF: 97 CASES; 356 RECIPIENTS; \$32,889.
GRANT DIVERSION TOTALS OF: 0 CASES; \$0.
ZERO PAY TOTALS OF 7 CASES; 28 RECIPIENTS.

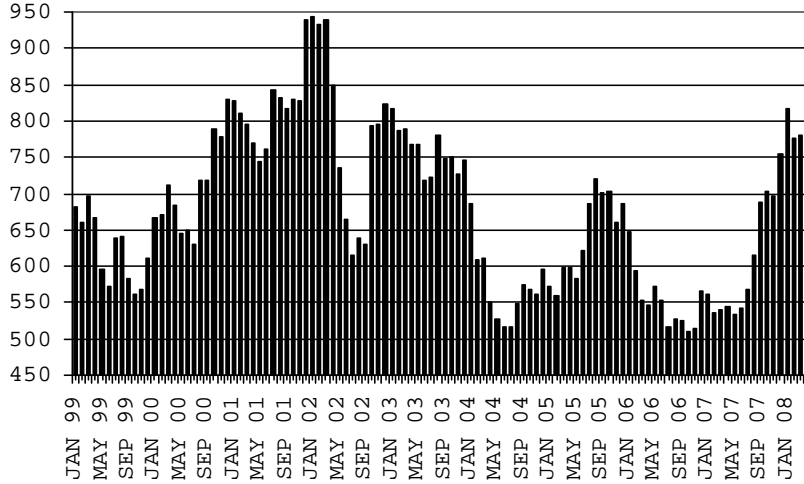
	CURRENT MO. CASES	CURRENT MO. RECIP.	CURRENT MO. DOLLARS	PRIOR MO. CASES	PRIOR MO. RECIP.	PRIOR MO. DOLLARS
PASQUAYAUQUI	13	58	4,478	1	6	452
WM APACHE	62	277	25,650	6	21	923
SALT RIVER	0	0	0	0	0	0
NAVAJO	0	0	0	0	0	0
HOPÍ	0	0	0	0	0	0
TOTAL	75	335	30,128	7	27	1,375

CASES WITH GRANT UNDER \$100 (SEE TABLE 1C).

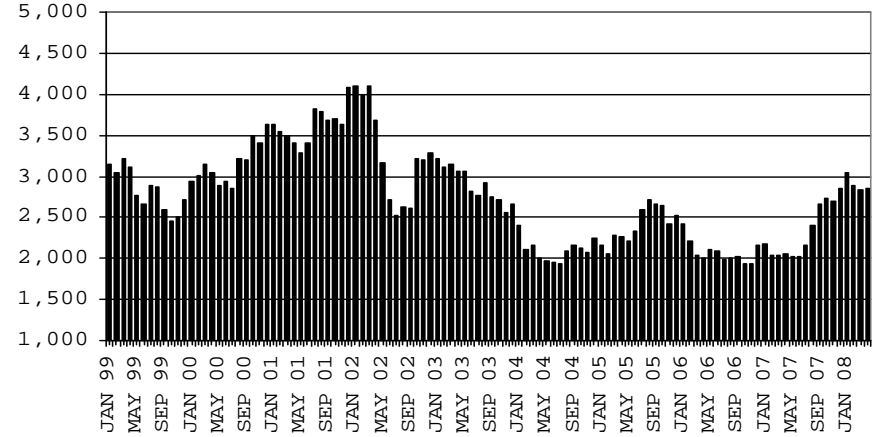
CHART 1A

CASH ASSISTANCE UNEMPLOYED PARENT PROGRAM COMPARISON OF CASES, RECIPIENTS, PAYMENTS & AVERAGE PAYMENTS FOR 1999, 2000, 2001, 2002, 2003, 2004, 2005, 2006 & 2007

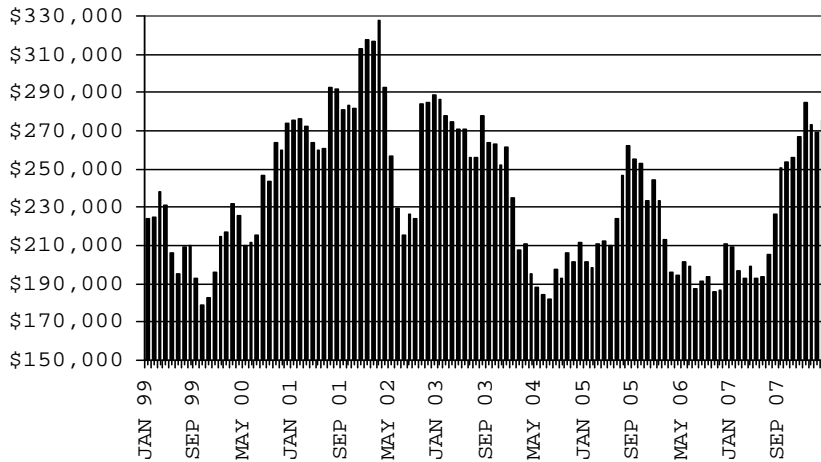
CASES



RECIPIENTS



PAYMENTS



AVERAGE PAYMENTS PER RECIPIENT

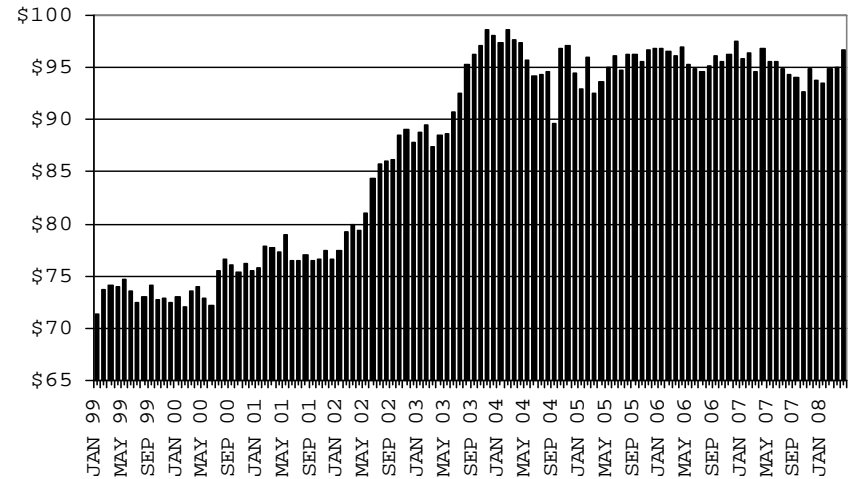


TABLE 1B 1/

CASH ASSISTANCE: ARIZONA
 CASES WITH GRANT UNDER \$100

	APRIL 2008							CHANGE FROM					
								MARCH 2008			APRIL 2007		
	FAMILIES (CASES)	PERSONS (RECIP.)	ADULTS	CHILDREN	TOTAL PAYMENTS	AVERAGE PAYMENT/ CASE	AVERAGE PAYMENT/ RECIP.	FAMILIES (CASES)	PERSONS (RECIP.)	TOTAL PAYMENTS	FAMILIES (CASES)	PERSONS (RECIP.)	TOTAL PAYMENTS
ARIZONA	673	1,358	369	989	48,534	72.12	35.74	18	61	981	13	(21)	1,642
DISTRICT I													
MARICOPA	353	713	174	539	24,373	69.05	34.18	15	39	1,061	(11)	(51)	(1,177)
DISTRICT II													
PIMA	131	270	76	194	10,187	77.76	37.73	(2)	5	547	20	36	2,406
DISTRICT III													
APACHE	3	5	2	3	189	63.00	37.80	0	(2)	(110)	(5)	(11)	(204)
COCONINO	8	15	5	10	521	65.13	34.73	5	10	351	2	5	140
NAVAJO	9	15	6	9	982	109.11	65.47	2	4	483	(3)	(7)	113
YAVAPAI	19	38	12	26	1,271	66.89	33.45	1	3	(92)	1	5	111
DISTRICT IV													
LA PAZ	10	19	10	9	547	54.70	28.79	3	6	100	8	12	455
MOHAVE	39	76	27	49	3,026	77.59	39.82	4	10	278	14	32	672
YUMA	20	45	9	36	1,422	71.10	31.60	(4)	(6)	(274)	(2)	(2)	(179)
DISTRICT V													
GILA	5	7	3	4	451	90.20	64.43	(5)	(8)	(449)	(5)	(14)	(288)
PINAL	32	78	24	54	2,549	79.66	32.68	(5)	(5)	(739)	(10)	(15)	(876)
DISTRICT VI													
COCHISE	28	49	12	37	1,936	69.14	39.51	5	9	(97)	1	(16)	54
GRAHAM	10	16	6	10	570	57.00	35.63	2	4	116	4	6	253
GREENLEE	2	3	1	2	100	50.00	33.33	1	2	1	1	2	19
SANTA CRUZ	4	9	2	7	410	102.50	45.56	(4)	(10)	(195)	(2)	(3)	143

EXCLUDES: PRIOR MONTH NET TOTALS OF 680 CASES; 1,419 RECIPIENTS; \$46,239.

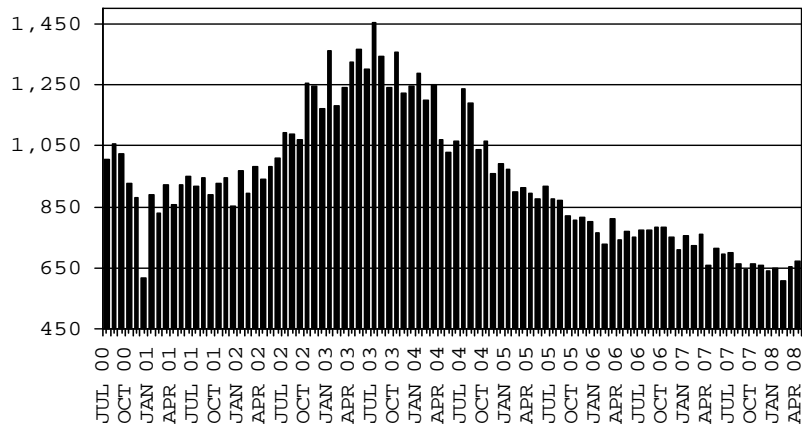
CHART 1B

CASH ASSISTANCE PROGRAM CASES WITH GRANT UNDER \$100

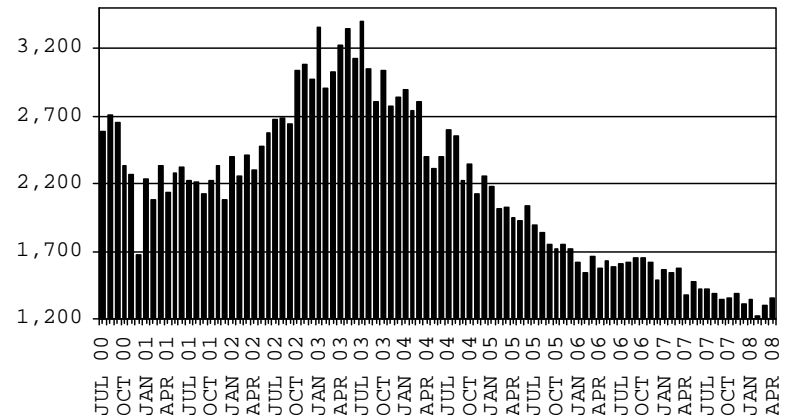
COMPARISON OF CASES, RECIPIENTS, PAYMENTS & AVERAGE PAYMENTS

FOR 2000, 2001, 2002, 2003, 2004, 2005, 2006 & 2007

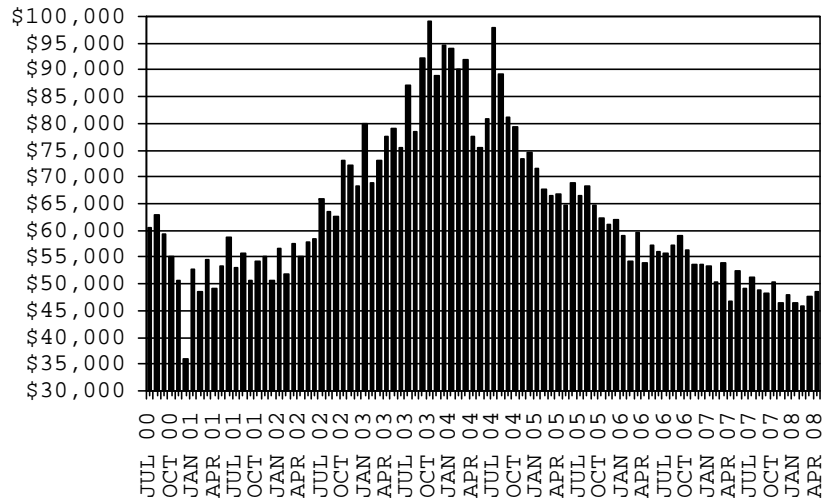
CASES



RECIPIENTS



PAYMENTS



AVERAGE PAYMENTS PER RECIPIENT

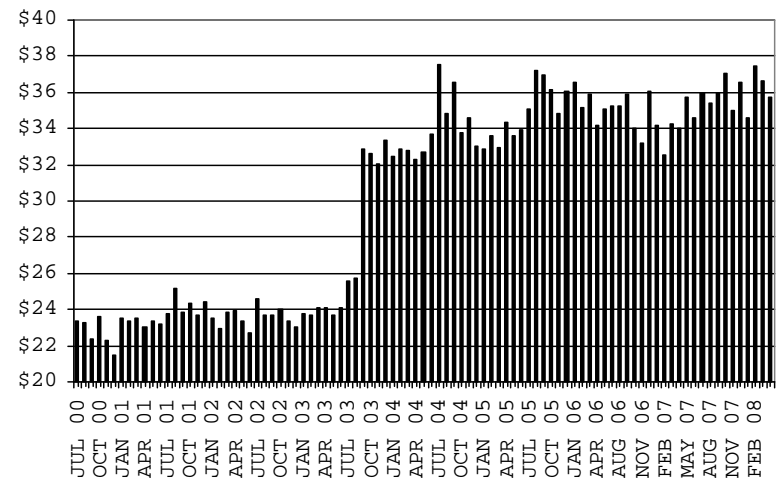


TABLE 1C 1/

CASH ASSISTANCE UNEMPLOYED PARENT PROGRAM: ARIZONA
 CASES WITH GRANT UNDER \$100

	APRIL 2008							CHANGE FROM			APRIL 2007		
					AVERAGE	AVERAGE							
	FAMILIES (CASES)	PERSONS (RECIP.)	ADULTS	CHILDREN	TOTAL PAYMENTS	PAYMENT/ CASE	PAYMENT/ RECIP.	FAMILIES (CASES)	PERSONS (RECIP.)	TOTAL PAYMENTS	FAMILIES (CASES)	PERSONS (RECIP.)	TOTAL PAYMENTS
ARIZONA	11	29	9	20	598	54.36	20.62	1	4	75	4	3	227
DISTRICT I													
MARICOPA	6	14	4	10	295	49.17	21.07	(1)	(1)	6	5	8	251
DISTRICT II													
PIMA	1	1	0	1	49	49.00	49.00	0	(1)	(11)	(3)	(11)	(161)
DISTRICT III													
APACHE	0	0	0	0	0	0.00	0.00	0	0	0	0	0	0
COCONINO	0	0	0	0	0	0.00	0.00	0	0	0	0	0	0
NAVAJO	0	0	0	0	0	0.00	0.00	0	0	0	(1)	(5)	(59)
YAVAPAI	1	3	0	3	77	77.00	25.67	0	0	0	1	3	77
DISTRICT IV													
LA PAZ	1	4	2	2	39	39.00	9.75	1	4	39	1	4	39
MOHAVE	0	0	0	0	0	0.00	0.00	(1)	(5)	(97)	0	0	0
YUMA	1	5	1	4	64	64.00	12.80	1	5	64	1	5	64
DISTRICT V													
GILA	1	2	2	0	74	74.00	37.00	1	2	74	0	(1)	16
PINAL	0	0	0	0	0	0.00	0.00	0	0	0	(1)	(3)	(58)
DISTRICT VI													
COCHISE	0	0	0	0	0	0.00	0.00	0	0	0	0	0	0
GRAHAM	0	0	0	0	0	0.00	0.00	0	0	0	0	0	0
GREENLEE	0	0	0	0	0	0.00	0.00	0	0	0	0	0	0
SANTA CRUZ	0	0	0	0	0	0.00	0.00	0	0	0	0	0	0

EXCLUDES: PRIOR MONTH NET TOTALS OF 29 CASES; 99 RECIPIENTS; \$1,565.

CHART 1C

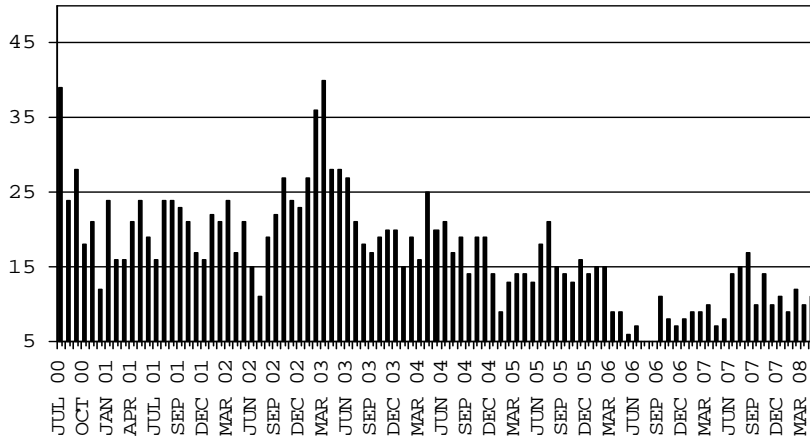
CASH ASSISTANCE UNEMPLOYED PARENT PROGRAM

CASES WITH GRANT UNDER \$100

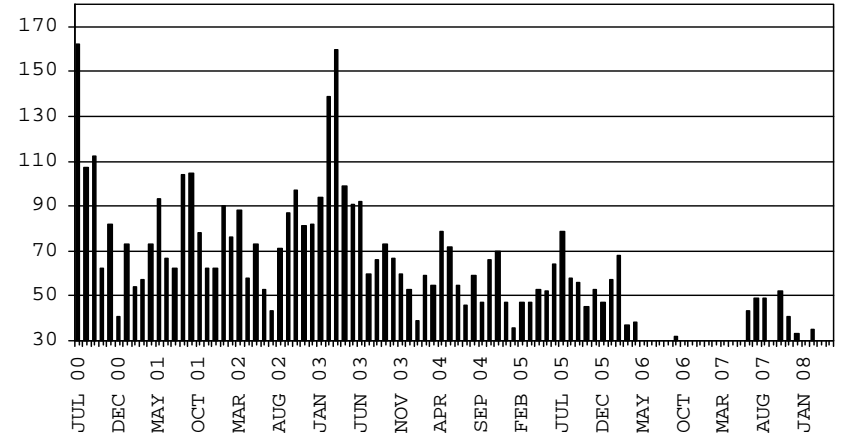
COMPARISON OF CASES, RECIPIENTS, PAYMENTS & AVERAGE PAYMENTS

FOR 2000, 2001, 2002, 2003, 2004, 2005, 2006 & 2007

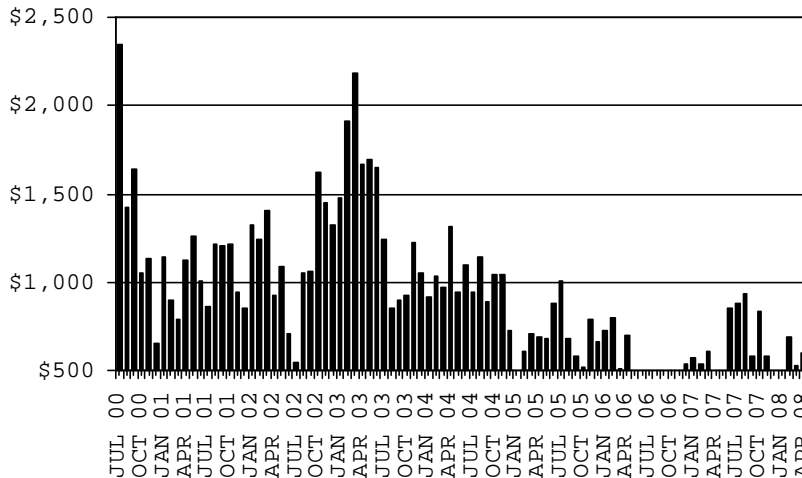
CASES



RECIPIENTS



PAYMENTS



AVERAGE PAYMENTS PER RECIPIENT

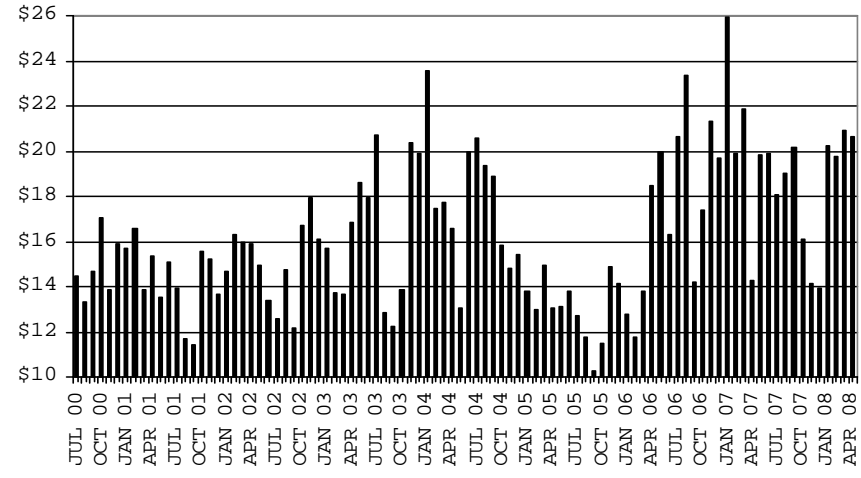


TABLE 2
GENERAL ASSISTANCE: ARIZONA 1,

	CHANGE FROM										
	APRIL 2008					MARCH 2008			APRIL 2007		
	NUMBER OF CASES	PERSONS (RECIP.)	TOTAL PAYMENTS	AVERAGE PAYMENT/ CASE	AVERAGE PAYMENT/ RECIP.	NUMBER OF CASES	PERSONS (RECIP.)	TOTAL PAYMENTS	NUMBER OF CASES	PERSONS (RECIP.)	TOTAL PAYMENTS
ARIZONA	1,398	1,403	212,776	152.20	151.66	(9)	(8)	(112)	84	80	13,055
DISTRICT I											
MARICOPA	544	545	83,327	153.17	152.89	(15)	(15)	(1,380)	10	9	1,583
DISTRICT II											
PIMA	361	361	54,198	150.13	150.13	4	4	1,068	14	13	2,417
DISTRICT III											
APACHE	15	17	2,520	168.00	148.24	0	1	258	(3)	(3)	(222)
COCONINO	23	23	3,318	144.26	144.26	(2)	(2)	(264)	6	5	676
NAVAJO	42	42	6,422	152.90	152.90	0	0	(94)	14	13	1,843
YAVAPAI	62	63	9,379	151.27	148.87	0	0	(432)	(1)	0	(454)
DISTRICT IV											
LA PAZ	10	10	1,275	127.50	127.50	(5)	(5)	(865)	1	0	(212)
MOHAVE	105	105	16,087	153.21	153.21	10	10	1,752	23	23	3,422
YUMA	32	32	4,228	132.13	132.13	2	2	(20)	(13)	(14)	(2,151)
DISTRICT V											
GILA	32	32	4,496	140.50	140.50	1	1	108	5	5	861
PINAL	101	102	15,923	157.65	156.11	(6)	(6)	(719)	15	16	2,859
DISTRICT VI											
COCHISE	52	52	8,476	163.00	163.00	4	4	757	9	9	1,706
GRAHAM	12	12	2,076	173.00	173.00	3	3	519	(1)	(1)	(43)
GREENLEE	3	3	454	151.33	151.33	(1)	(1)	(173)	3	3	454
SANTA CRUZ	4	4	597	149.25	149.25	(4)	(4)	(627)	2	2	316

1/EXCLUDES: PRIOR MONTH NET TOTALS OF : 229 CASES; 230 RECIPIENTS; \$51,802.
REFUGEE RESETTLEMENT PROGRAM: 126 CASES; 173 RECIPIENTS; \$33,580.

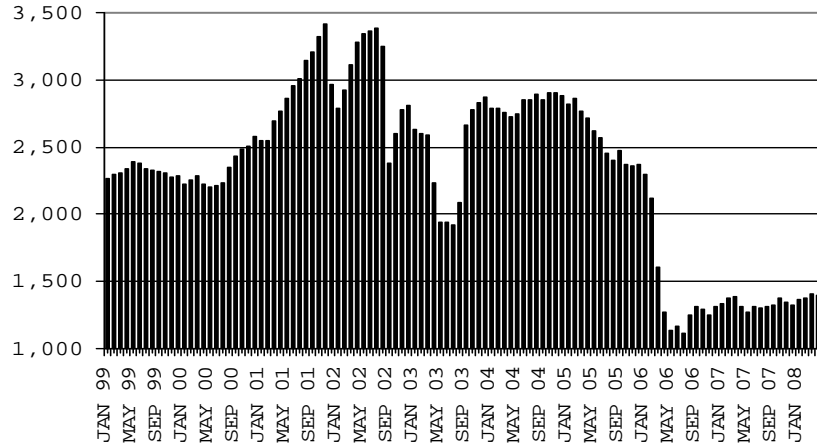
CHART 2

GENERAL ASSISTANCE PROGRAM

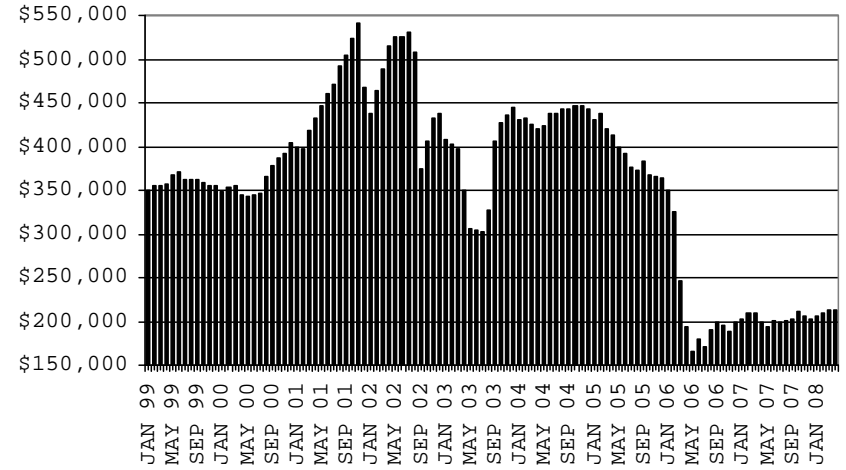
COMPARISON OF CASES, PAYMENTS & AVERAGE PAYMENTS

FOR 1999, 2000, 2001, 2002, 2003, 2004, 2005, 2006 & 2007

CASES



PAYMENTS



AVERAGE PAYMENT PER CASE

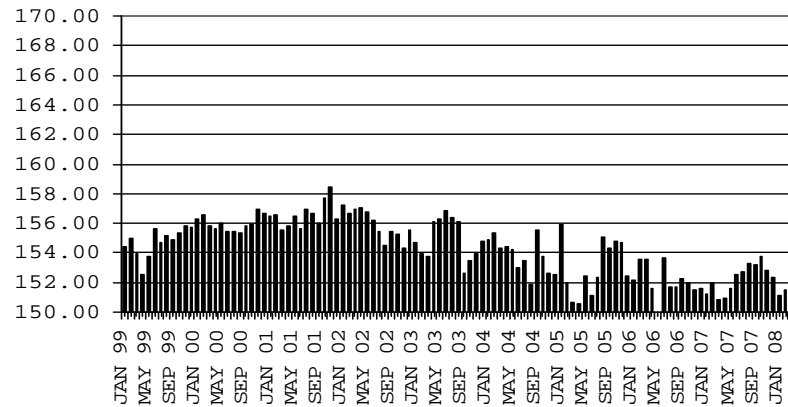


TABLE 4

TUBERCULOSIS CONTROL: ARIZONA 1/

	APRIL 2008					CHANGE FROM					
						MARCH 2008			APRIL 2007		
	NUMBER OF CASES	PERSONS (RECIP.)	TOTAL PAYMENTS	AVERAGE PAYMENT/ CASE	AVERAGE PAYMENT/ RECIP.	NUMBER OF CASES	PERSONS (RECIP.)	TOTAL PAYMENTS	NUMBER OF CASES	PERSONS (RECIP.)	TOTAL PAYMENTS
ARIZONA	9	9	1,102	122.44	122.44	(4)	(4)	(402)	(6)	(6)	(655)
DISTRICT I											
MARICOPA	8	8	994	124.25	124.25	(4)	(4)	(402)	(7)	(7)	(763)
DISTRICT II											
PIMA	0	0	0	0.00	0.00	0	0	0	0	0	0
DISTRICT III	1	1	108	108.00	108.00	0	0	0	1	1	108
APACHE	0	0	0	0.00	0.00	0	0	0	0	0	0
COCONINO	0	0	0	0.00	0.00	0	0	0	0	0	0
NAVAJO	0	0	0	0.00	0.00	0	0	0	0	0	0
YAVAPAI	1	1	108	108.00	108.00	0	0	0	1	1	108
DISTRICT IV	0	0	0	0.00	0.00	0	0	0	0	0	0
LA PAZ	0	0	0	0.00	0.00	0	0	0	0	0	0
MOHAVE	0	0	0	0.00	0.00	0	0	0	0	0	0
YUMA	0	0	0	0.00	0.00	0	0	0	0	0	0
DISTRICT V	0	0	0	0.00	0.00	0	0	0	0	0	0
GILA	0	0	0	0.00	0.00	0	0	0	0	0	0
PINAL	0	0	0	0.00	0.00	0	0	0	0	0	0
DISTRICT VI	0	0	0	0.00	0.00	0	0	0	0	0	0
COCHISE	0	0	0	0.00	0.00	0	0	0	0	0	0
GRAHAM	0	0	0	0.00	0.00	0	0	0	0	0	0
GREENLEE	0	0	0	0.00	0.00	0	0	0	0	0	0
SANTA CRUZ	0	0	0	0.00	0.00	0	0	0	0	0	0

1/EXCLUDES: PRIOR MONTH NET TOTALS OF : 1 CASES; 1 RECIPIENTS; \$274.

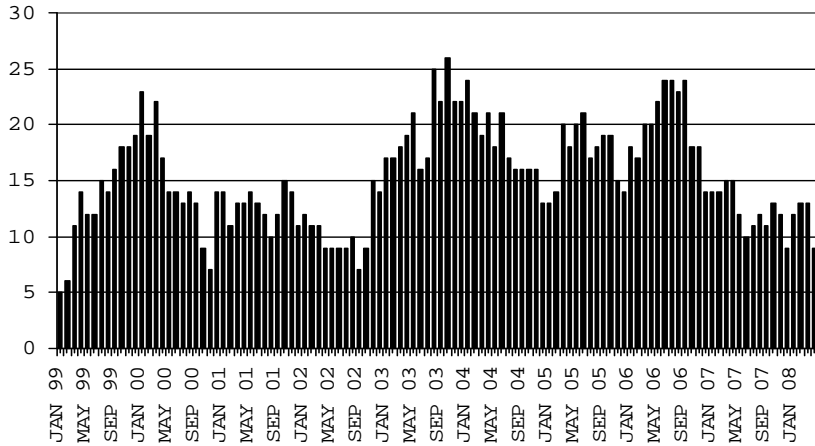
CHART 4

TUBERCULOSIS CONTROL PROGRAM

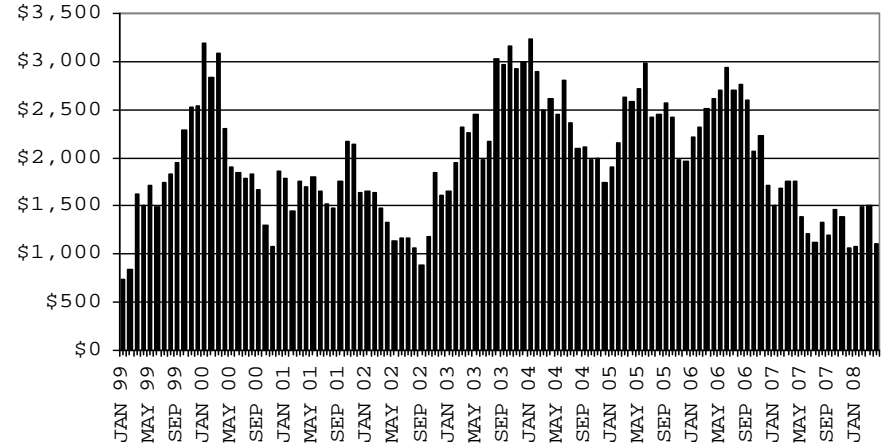
COMPARISON OF CASES, PAYMENTS & AVERAGE PAYMENTS

FOR 1999, 2000, 2001, 2002, 2003, 2004, 2005, 2006 & 2007

CASES



PAYMENTS



AVERAGE PAYMENT PER CASE

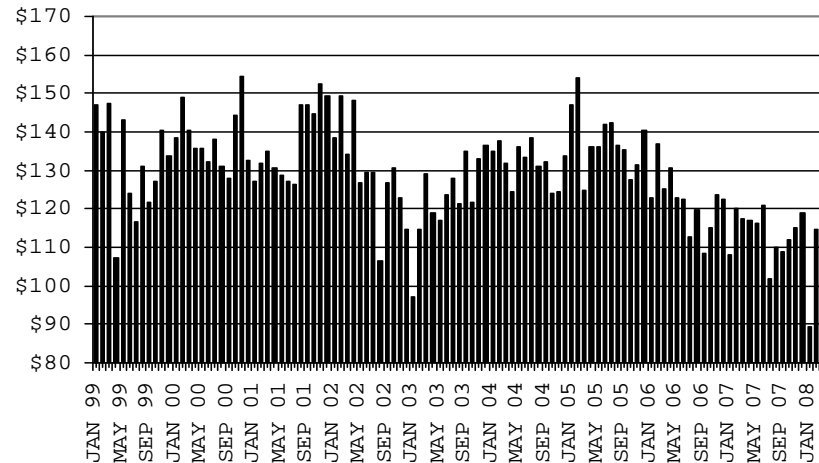


TABLE 6

FOOD STAMP PROGRAM: ARIZONA 1/

	CHANGE FROM										
	APRIL 2008					MARCH 2008			APRIL 2007		
	HOUSEHOLDS	PERSONS	TOTAL COUPON ISSUANCE	AVERAGE ALLOT./ HOUSEHOLD	AVERAGE ALLOT./ PERSON	HOUSEHOLDS	PERSONS	TOTAL COUPON ISSUANCE	HOUSEHOLDS	PERSONS	TOTAL COUPON ISSUANCE
ARIZONA	259,001	626,555	63,035,595	243.38	100.61	3,789	8,108	765,919	40,384	90,911	10,809,610
DISTRICT I											
MARICOPA	130,726	317,563	32,581,751	249.24	102.60	2,775	5,731	551,861	22,222	51,571	6,073,123
DISTRICT II											
PIMA	46,185	105,113	10,597,205	229.45	100.82	494	1,097	106,250	7,209	14,973	1,823,212
DISTRICT III											
APACHE	6,359	19,455	1,898,671	298.58	97.59	(21)	(36)	(1,982)	236	349	140,294
COCONINO	5,970	17,156	1,639,841	274.68	95.58	(33)	6	(4,057)	924	2,083	262,881
NAVAJO	9,908	27,741	2,692,725	271.77	97.07	(36)	(10)	(14,518)	1,051	2,981	360,818
YAVAPAI	7,494	15,190	1,479,836	197.47	97.42	140	233	8,514	1,409	2,910	290,958
DISTRICT IV											
LA PAZ	1,318	2,863	296,308	224.82	103.50	(13)	(41)	(5,334)	69	79	15,926
MOHAVE	12,161	25,299	2,603,695	214.10	102.92	174	263	27,991	2,328	4,425	525,434
YUMA	9,863	26,032	2,325,637	235.79	89.34	200	481	69,540	1,106	2,606	233,654
DISTRICT V											
GILA	3,683	8,524	862,842	234.28	101.23	41	120	4,563	448	866	108,070
PINAL	13,047	32,813	3,328,352	255.10	101.43	46	207	30,025	2,192	5,534	652,685
DISTRICT VI											
COCHISE	7,213	15,983	1,542,793	213.89	96.53	8	(30)	(11,182)	775	1,407	181,277
GRAHAM	2,170	5,239	499,627	230.24	95.37	(9)	53	3,253	153	426	53,125
GREENLEE	239	487	49,024	205.12	100.67	0	7	420	(21)	(68)	(3,533)
SANTA CRUZ	2,665	7,097	637,288	239.13	89.80	23	27	575	283	769	91,686

1/EXCLUDES: PRIOR MONTH NET TOTALS OF : 9,049 CASES; 23,474 RECIPIENTS; \$1,188,240.
 AGED CANCELATIONS: 0 CASES; 0 RECIPIENTS; 0.
 FS COUPON CONVERSIONS: 0 CASES; 0 RECIPIENTS; \$0.
 FS REINSTATED: 0 CASES; \$0.
 FS ZERO PAY: 7,625 CASES; 30,332 RECIPIENTS.

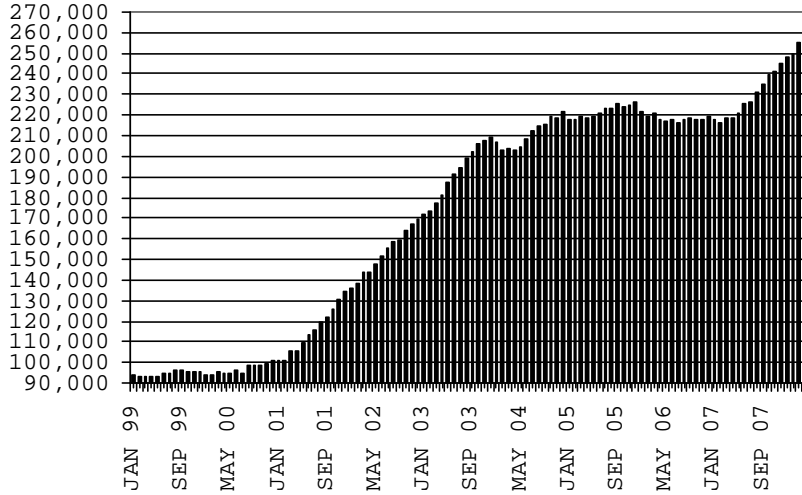
CHART 6

FOOD STAMPS PROGRAM

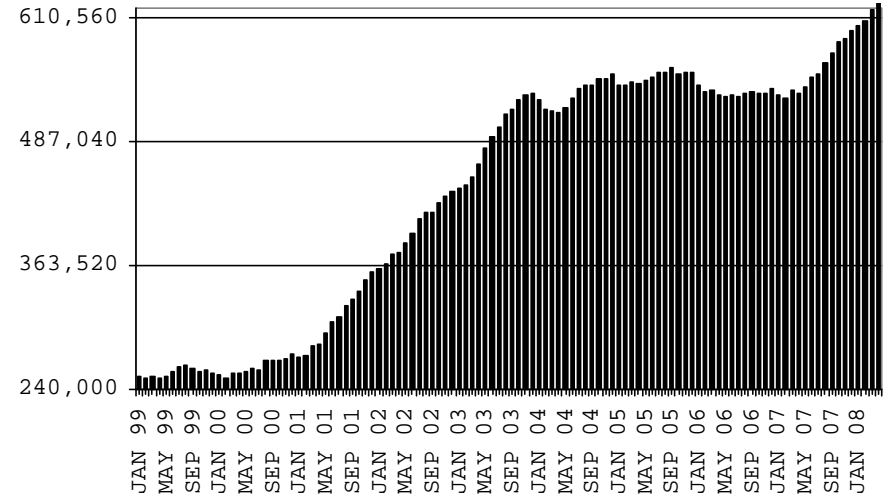
COMPARISON OF HOUSEHOLDS, RECIPIENTS, PAYMENTS & AVERAGE PAYMENTS

FOR 1999, 2000, 2001, 2002, 2003, 2004, 2005, 2006 & 2007

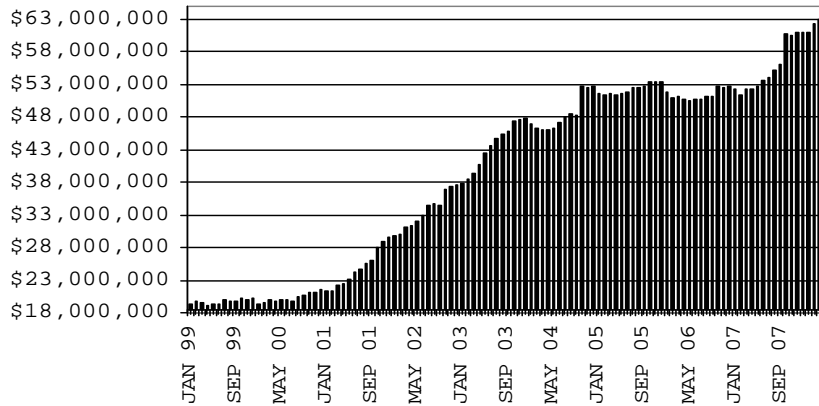
HOUSEHOLDS



RECIPIENTS



TOTAL PAYMENTS



AVERAGE PAYMENT PER HOUSEHOLD

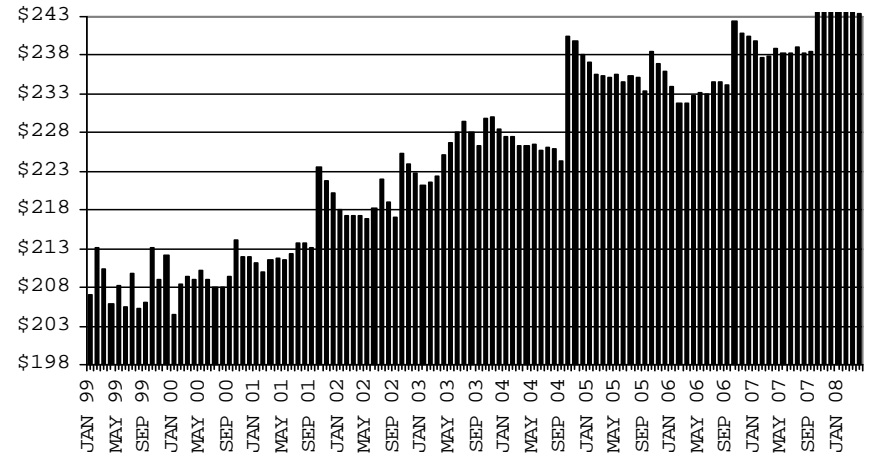


TABLE 7A
MEDICAL ASSISTANCE PROGRAM
RECIPIENTS

APRIL 2008

	SOBRA WOMAN 133% FPL	SOBRA CHILD	ADULT W/O CHILD 100% FPL	FOSTER CARE	1931 36% FPL	FEDERAL EMERGENCY SERVICES	INFANTS	ADULT W/O CHILD 40% FPL	MEDICAL W/SPEND DOWN	SOBRA WOMAN 100% FPL	SOBRA CHILD 100% FPL	TRANSITIONAL MEDICAL T1 - T4	1931 100% FPL	YATI	OTHER	TOTAL CASES
ARIZONA	11,690	62,130	39,325	9,974	265,859	85,045	49,976	97,027	5,242	3,545	165,824	42,950	79,622	246	23,181	941,636
DISTRICT I																
MARICOPA	5,970	34,852	16,967	4,984	140,760	65,677	29,990	43,410	2,748	1,798	93,306	20,395	37,258	124	11,442	509,681
DISTRICT II																
PIMA	1,800	9,587	7,747	2,841	41,284	10,591	7,013	18,187	785	568	25,930	6,989	14,523	75	4,175	152,095
DISTRICT III																
APACHE	261	1,404	903	40	10,520	98	948	4,284	42	85	3,658	886	2,180	2	363	25,674
COCONINO	370	1,463	1,245	116	7,423	550	1,215	3,111	103	100	3,633	1,150	2,192	8	364	23,043
NAVAJO	370	2,033	1,318	116	11,323	330	1,437	4,888	162	112	4,633	1,261	2,937	1	549	31,470
YAVAPAI	418	1,805	1,780	430	5,575	1,612	1,322	3,033	206	120	4,193	1,307	2,571	12	953	25,337
DISTRICT IV																
LA PAZ	39	206	218	15	1,141	194	177	549	37	21	633	203	342	1	146	3,922
MOHAVE	550	2,056	2,074	241	9,640	871	1,565	5,082	350	173	6,468	1,886	3,771	2	1,241	35,970
YUMA	593	2,373	2,177	253	9,149	1,966	1,898	3,210	201	183	7,701	4,078	4,649	0	1,208	39,639
DISTRICT V																
GILA	141	709	572	82	3,863	141	478	1,982	98	34	1,590	489	995	2	294	11,470
PINAL	635	3,623	1,860	506	13,966	1,721	2,188	5,189	272	170	6,941	2,003	3,770	13	1,142	43,999
DISTRICT VI																
COCHISE	247	995	1,343	248	6,156	667	876	2,430	138	92	3,551	1,086	2,281	6	754	20,870
GRAHAM	143	420	400	61	2,043	68	374	871	26	30	1,091	420	701	0	129	6,777
GREENLEE	24	33	41	11	264	11	57	107	6	2	107	51	60	0	26	800
SANTA CRUZ	129	571	680	30	2,752	548	438	694	68	57	2,389	746	1,392	0	395	10,889

TABLE 7B

MEDICAL ASSISTANCE PROGRAM

RECIPIENTS

CHANGE FROM

MARCH 2008

	SOBRA WOMAN 133% FPL	SOBRA CHILD	ADULT W/O CHILD 100% FPL	FOSTER CARE	1931 36% FPL	FEDERAL EMERGENCY SERVICES	INFANTS	ADULT W/O CHILD 40% FPL	MEDICAL W/SPEND DOWN	SOBRA WOMAN 100% FPL	SOBRA CHILD 100% FPL	TRANSITIONAL MEDICAL T1 - T4	1931 100% FPL	YATI	OTHER	TOTAL CASES
ARIZONA	(181)	(763)	38	104	1,126	(731)	(452)	913	(132)	132	1,766	(245)	974	4	173	2,726
DISTRICT I																
MARICOPA	(143)	(414)	84	49	970	(748)	(319)	622	(46)	96	1,127	(138)	338	7	160	1,645
DISTRICT II																
PIMA	6	(42)	(27)	40	64	(7)	(86)	278	(59)	(8)	126	(26)	200	2	38	499
DISTRICT III																
APACHE	0	9	18	(1)	(11)	(7)	(14)	(19)	(17)	(3)	(55)	20	(18)	0	(7)	(105)
COCONINO	(5)	9	(12)	2	123	9	14	(18)	(1)	9	(22)	5	25	(1)	11	148
NAVAJO	(8)	(14)	10	2	(70)	(4)	20	2	(13)	13	191	7	86	(1)	(23)	198
YAVAPAI	(19)	(13)	10	(1)	(109)	(3)	(25)	(21)	(7)	0	78	57	46	(1)	(7)	(15)
DISTRICT IV																
LA PAZ	(2)	(3)	(6)	1	(23)	1	0	(20)	2	4	10	(4)	8	0	(4)	(36)
MOHAVE	3	(14)	(15)	4	86	(13)	18	58	33	(3)	2	109	0	(2)	(11)	255
YUMA	7	(110)	44	12	15	51	18	73	(21)	17	141	(160)	162	(1)	10	258
DISTRICT V																
GILA	2	4	0	1	(18)	2	0	10	(2)	7	48	7	(17)	0	(6)	38
PINAL	(18)	(115)	(50)	(2)	79	(2)	(61)	(5)	9	(6)	90	(4)	71	3	14	3
DISTRICT VI																
COCHISE	(13)	(32)	8	(4)	(55)	(16)	8	(28)	(1)	6	46	(71)	51	(1)	14	(88)
GRAHAM	(6)	(24)	(19)	1	0	1	(14)	(12)	(3)	0	29	(63)	48	(1)	0	(63)
GREENLEE	2	(13)	1	0	4	1	(7)	0	(4)	0	(7)	(5)	(9)	0	7	(30)
SANTA CRUZ	13	9	(8)	0	71	4	(4)	(7)	(2)	0	(38)	21	(17)	0	(23)	19

TABLE 7C
MEDICAL ASSISTANCE PROGRAM
RECIPIENTS

CHANGE FROM

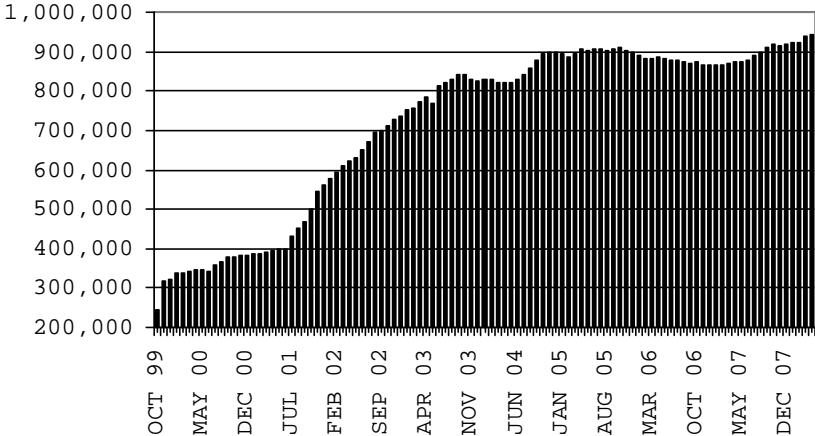
APRIL 2007

	SOBRA WOMAN 133% FPL	SOBRA CHILD	ADULT W/O CHILD 100% FPL	FOSTER CARE	1931 36% FPL	FEDERAL EMERGENCY SERVICES	INFANTS	ADULT W/O CHILD 40% FPL	MEDICAL W/SPEND DOWN	SOBRA WOMAN 100% FPL	SOBRA CHILD 100% FPL	TRANSITIONAL MEDICAL T1 - T4	3E 1931 100% FPL	YATI	OTHER	TOTAL CASES
ARIZONA	477	3,427	3,340	1,125	17,690	1,003	629	17,766	19	223	14,270	(1,429)	7,544	20	3,139	69,243
DISTRICT I																
MARICOPA	260	2,689	1,857	539	13,106	1,372	340	9,502	(164)	166	10,259	(738)	4,200	6	1,582	44,976
DISTRICT II																
PIMA	97	552	637	349	2,484	91	140	3,935	125	29	1,683	(253)	1,427	7	579	11,882
DISTRICT III																
APACHE	(4)	23	(35)	2	58	(3)	(27)	176	(14)	(4)	(216)	(240)	(145)	2	44	(383)
COCONINO	(48)	111	89	0	332	6	61	321	(9)	16	41	(85)	71	0	42	948
NAVAJO	17	(140)	(56)	14	237	(4)	126	437	(17)	(19)	376	(22)	196	(2)	67	1,210
YAVAPAI	(21)	8	151	80	306	23	(89)	564	(52)	5	433	(79)	341	1	117	1,788
DISTRICT IV																
LA PAZ	(10)	(25)	1	(2)	(95)	6	7	3	8	7	6	43	(2)	1	14	(38)
MOHAVE	76	4	252	17	814	(97)	(18)	1,186	49	30	622	266	379	1	222	3,803
YUMA	59	51	104	0	(494)	(212)	(20)	298	(30)	13	359	171	302	(3)	149	747
DISTRICT V																
GILA	10	(75)	44	1	(5)	(20)	6	210	20	(13)	46	(50)	74	(1)	56	303
PINAL	12	319	219	116	850	(120)	60	730	58	1	509	(227)	414	8	124	3,073
DISTRICT VI																
COCHISE	(7)	(120)	74	10	69	(36)	14	258	31	0	69	(134)	181	2	84	495
GRAHAM	3	18	12	0	(45)	13	8	92	(4)	(10)	35	(153)	78	(2)	19	64
GREENLEE	3	(2)	(8)	0	(57)	4	2	1	1	(3)	(40)	(10)	(13)	0	1	(121)
SANTA CRUZ	30	14	(1)	(1)	130	(20)	19	53	17	5	88	82	41	0	39	496

CHART 7

MEDICAL ASSISTANCE PROGRAM COMPARISON OF RECIPIENTS FOR 1999, 2000, 2001, 2002, 2003, 2004, 2005, 2006 & 2007

TOTAL RECIPIENTS



NEW SERIES WHICH INCLUDES 1931