



**State of Arizona**

**Department of Economic Security**

**Family Assistance Administration**

**Statistical Bulletin**

**May, 2008**

**Phone: (602) 542-3678**

**<http://www.azdes.gov/faa/Statistics.asp>**

\*\*\*\* STATISTICAL BULLETIN \*\*\*\*  
ARIZONA DEPARTMENT OF ECONOMIC SECURITY  
FAMILY ASSISTANCE ADMINISTRATION  
BOX 6123, PHOENIX, ARIZONA 85005  
PHONE (602) 542-3678

MAY 2008

THIS ISSUE OF THE STATISTICAL BULLETIN COMPARES MAY 2008 DATA FOR EACH OF THE INDICATED PROGRAMS WITH THE INFORMATION FOR APRIL 2008 AND MAY 2007. STATEWIDE SUMMARIES OF ACTIVITY WITHIN EACH OF THE SPECIFIC PROGRAMS FOR THIS REPORT PERIOD ARE DISCUSSED BELOW. THE TABLES COMPARE CURRENT AND PRIOR MONTH DATA. DISTRICT AND COUNTY COMPARISONS ARE PROVIDED WITHIN THIS BULLETIN

CASH ASSISTANCE (CA)

COMPARING TO APRIL 2008, MAY 2008 CASES INCREASED BY 69 (0.20%) TO 34,890. RECIPIENTS INCREASED BY 176 (0.24%) TO 73,930. PAYMENTS INCREASED BY \$18,382 (0.20%) TO \$9,250,095. AVERAGE PAYMENT PER CASE INCREASED BY \$0.00 (0.00%) TO \$265.12. PAYMENT PER RECIPIENT DECREASED BY \$0.05 (0.04%) TO \$125.12.

COMPARING TO MAY 2007, MAY 2008 CASES INCREASED BY 240 (0.69%). RECIPIENTS DECREASED BY 349 (0.47%). TOTAL PAYMENTS DECREASED BY \$21,021 (0.23%). THE AVERAGE PAYMENT PER CASE DECREASED BY \$2.44 (0.91%). THE AVERAGE PAYMENT PER RECIPIENT INCREASED BY \$0.31 (0.25%).

CASH ASSISTANCE UNEMPLOYED PARENT PROGRAM (CA-UP)

COMPARING TO APRIL 2008, MAY 2008 CASES INCREASED BY 29 (3.67%) TO 819. RECIPIENTS INCREASED BY 72 (2.53%) TO 2,920. PAYMENTS INCREASED BY \$9,114 (3.31%) TO \$284,563. AVERAGE PAYMENT PER CASE DECREASED BY \$1.22 (0.35%) TO \$347.45. PAYMENT PER RECIPIENT INCREASED BY \$0.73 (0.76%) TO \$97.45.

COMPARING TO MAY 2007, MAY 2008 CASES INCREASED BY 285 (53.37%). RECIPIENTS INCREASED BY 907 (45.06%). TOTAL PAYMENTS INCREASED BY \$92,076 (47.83%). THE AVERAGE PAYMENT PER CASE DECREASED BY \$13.02 (3.61%). THE AVERAGE PAYMENT PER RECIPIENT INCREASED BY \$1.83 (1.91%).

CASH ASSISTANCE WITH GRANT UNDER \$100 (CA-MOE)

COMPARING TO APRIL 2008, MAY 2008 CASES INCREASED BY 16 (2.38%) TO 689. RECIPIENTS INCREASED BY 41 (3.02%) TO 1,399. PAYMENTS INCREASED BY \$1,422 (2.93%) TO \$49,956. AVERAGE PAYMENT PER CASE INCREASED BY \$0.39 (0.54%) TO \$72.51. AVERAGE PAYMENT PER RECIPIENT DECREASED BY \$0.03 (0.08%) TO \$35.71.

COMPARING TO MAY 2007, MAY 2008 CASES DECREASED BY 25 (3.50%). RECIPIENTS DECREASED BY 73 (4.96%). TOTAL PAYMENTS DECREASED BY \$2,619 (4.98%). THE AVERAGE PAYMENT PER CASE DECREASED BY \$1.12 (1.52%). THE AVERAGE PAYMENT PER RECIPIENT DECREASED BY \$0.01 (0.03%).

CASH ASSISTANCE UNEMPLOYED PARENT PROGRAM WITH GRANT UNDER \$100 (CA-UP-MOE) NEW PROGRAM STARTING 7/01

COMPARING TO APRIL 2008, MAY 2008 CASES INCREASED BY 9 (81.82%) TO 20. RECIPIENTS INCREASED BY 32 (110.34%) TO 61. PAYMENTS INCREASED BY \$539 (90.13%) TO \$1,137. AVERAGE PAYMENT PER CASE INCREASED BY \$2.49 (4.58%) TO \$56.85. PAYMENT PER RECIPIENT DECREASED BY \$1.98 (9.60%) TO \$18.64.

COMPARING TO MAY 2007, MAY 2008 CASES INCREASED BY 12 (150.00%). RECIPIENTS INCREASED BY 36 (6.02%). TOTAL PAYMENTS INCREASED BY \$641 (129.23%). THE AVERAGE PAYMENT PER CASE DECREASED BY \$5.15 (8.31%). THE AVERAGE PAYMENT PER RECIPIENT DECREASED BY \$1.20 (6.05%).

GENERAL ASSISTANCE (GA)

COMPARING TO APRIL 2008, MAY 2008 CASES INCREASED BY 6 (0.43%) TO 1,404. RECIPIENTS INCREASED BY 4 (0.29%) TO 1,407. PAYMENTS INCREASED BY \$449 (0.21%) TO \$213,225. AVERAGE PAYMENT PER CASE DECREASED BY \$0.33 (0.22%) TO \$151.87. AVERAGE PAYMENT PER RECIPIENT DECREASED BY \$0.11 (0.07%) TO \$151.55.

COMPARING TO MAY 2007, MAY 2008 CASES INCREASED BY 135 (10.64%). RECIPIENTS INCREASED BY 131 (10.27%). TOTAL PAYMENTS INCREASED BY \$19,796 (10.23%). THE AVERAGE PAYMENT PER CASE DECREASED BY \$0.56 (0.36%). THE AVERAGE PAYMENT PER RECIPIENT DECREASED BY \$0.04 (0.03%).

TUBERCULOSIS CONTROL PROGRAM (TC)

COMPARING TO APRIL 2008, MAY 2008 CASES INCREASED BY 1 (11.11%) TO 10. RECIPIENTS INCREASED BY 1 (11.11%) TO 10. PAYMENTS INCREASED BY \$108 (9.80%) TO \$1,210. AVERAGE PAYMENT PER CASE DECREASED BY \$1.44 (1.18%) TO \$121.00. AVERAGE PAYMENT PER RECIPIENT DECREASED BY \$1.44 (1.18%) TO \$121.00.

COMPARING TO MAY 2007, MAY 2008 CASES DECREASED BY 2 (16.67%). RECIPIENTS DECREASED BY 2 (16.67%). TOTAL PAYMENTS DECREASED BY \$184 (13.20%). THE AVERAGE PAYMENT PER CASE INCREASED BY \$4.83 (4.16%). THE AVERAGE PAYMENT PER RECIPIENT INCREASED BY \$4.83 (4.16%).

FOOD STAMP PROGRAM (FS)

COMPARING TO APRIL 2008, MAY 2008 FOOD STAMP HOUSEHOLDS INCREASED BY 4,698 (1.81%) TO 263,699. PERSONS RECEIVING FOOD STAMPS INCREASED BY 12,225 (1.95%) TO 638,780. TOTAL COUPON ISSUANCE INCREASED BY \$1,064,658 (1.69%) TO \$64,100,253. THE AVERAGE HOUSEHOLD ALLOTMENT DECREASED BY \$0.30 (0.12%) TO \$243.08. THE AVERAGE ALLOTMENT PER PERSON DECREASED BY \$0.26 (0.26%) TO \$100.35.

COMPARING TO MAY 2007, MAY 2008 FOOD STAMP HOUSEHOLDS INCREASED BY 42,724 (19.33%). PERSONS RECEIVING FOOD STAMPS INCREASED BY 97,518 (18.02%). TOTAL COUPON ISSUANCE INCREASED BY \$11,441,195 (21.73%). THE AVERAGE ALLOTMENT PER HOUSEHOLD INCREASED BY \$4.78 (2.00%). THE AVERAGE ALLOTMENT PER PERSON INCREASED BY \$3.06 (3.15%).

MEDICAL ASSISTANCE PROGRAM (MA) NEW TABLE INCLUDES PROP. 204 CATEGORIES

COMPARING TO APRIL 2008, MAY 2008 TOTAL RECIPIENTS TOTAL RECIPIENTS INCREASED BY 1,988 (0.21%). SOBRA WOMEN AT 140% FPL DECREASED BY 8 (0.07%). SOBRA CHILDREN DECREASED BY 335 (0.54%). ADULTS W/O CHILD AT 100% INCREASED BY 120 (0.31%). FOSTER CARE INCREASED BY 165 (1.65%). 1931 AT 36% FPL INCREASED BY 1,273 (0.48%). EMERGENCY SERVICES DECREASED BY 856 (1.01%). INFANTS INCREASED BY 87 (0.17%). ADULT W/O CHILD AT 140% INCREASED BY 501 (0.52%). MEDICAL W/SPEND DOWN DECREASED BY 218 (4.16%). SOBRA WOMAN AT 100% DECREASED BY 25 (0.71%). SOBRA CHILD AT 100% INCREASED BY 1,590 (0.96%). TRANSITIONAL MEDICAL DECREASED BY 1,084 (2.52%). 1931 AT 100% INCREASED BY 1,066 (1.34%). YATI INCREASED BY 4 (1.63%). ALL OTHER CATEGORIES DECREASED BY 292 (1.26%).

COMPARING TO MAY 2007, MAY 2008 TOTAL RECIPIENTS TOTAL RECIPIENTS INCREASED BY 69,592 (7.96%). SOBRA WOMEN AT 140% FPL INCREASED BY 361 (3.19%). SOBRA CHILDREN INCREASED BY 3,273 (5.59%). ADULTS W/O CHILD AT 100% INCREASED BY 3,584 (9.99%). FOSTER CARE INCREASED BY 1,216 (13.63%). 1931 AT 36% FPL INCREASED BY 20,247 (8.20%). EMERGENCY SERVICES DECREASED BY 250 (0.30%). INFANTS INCREASED BY 825 (1.68%). ADULT W/O CHILD AT 140% INCREASED BY 17,912 (22.50%). MEDICAL W/SPEND DOWN DECREASED BY 187 (3.59%). SOBRA WOMAN AT 100% INCREASED BY 132 (3.90%). SOBRA CHILD AT 100% INCREASED BY 14,436 (9.44%). TRANSITIONAL MEDICAL DECREASED BY 2,482 (5.60%). 1931 AT 100% INCREASED BY 7,884 (10.83%). YATI INCREASED BY 23 (10.13%). ALL OTHER CATEGORIES INCREASED BY 2,618 (12.92%).

# TANF SUMMARY

## TABLES 1, 1A, 1B, & 1C: ARIZONA 1

	MAY 2008							APRIL 2008			MAY 2007		
	FAMILIES (CASES)	PERSONS (RECIP.)	ADULTS	CHILDREN	TOTAL PAYMENTS	AVERAGE	AVERAGE	FAMILIES (CASES)	PERSONS (RECIP.)	TOTAL PAYMENTS	FAMILIES (CASES)	PERSONS (RECIP.)	TOTAL PAYMENTS
						PAYMENT/ CASE	PAYMENT/ RECIP.						
ARIZONA	36,418	78,310	18,859	59,451	9,585,751	263.21	122.41	123	321	29,457	512	521	69,077
DISTRICT I													
MARICOPA	20,518	44,738	10,075	34,663	5,447,829	265.51	121.77	135	299	28,592	899	1,797	213,640
DISTRICT II													
PIMA	6,741	13,902	3,547	10,355	1,748,802	259.43	125.79	(58)	(106)	(15,968)	(152)	(588)	(64,943)
DISTRICT III													
APACHE	98	189	56	133	24,560	250.61	129.95	1	9	368	(26)	(94)	(7,721)
COCONINO	243	508	123	385	59,788	246.04	117.69	11	18	3,029	(19)	(45)	(5,054)
NAVAJO	1,291	3,198	912	2,286	360,846	279.51	112.83	(5)	2	1,473	(89)	(239)	(28,086)
YAVAPAI	686	1,347	300	1,047	168,946	246.28	125.42	7	29	3,291	40	85	9,167
DISTRICT IV													
LA PAZ	232	501	164	337	57,957	249.81	115.68	(2)	(23)	(362)	1	(5)	(3,581)
MOHAVE	1,376	2,879	832	2,047	354,734	257.80	123.21	(10)	(16)	(2,587)	36	112	7,559
YUMA	1,084	2,353	509	1,844	284,880	262.80	121.07	52	143	16,778	(28)	(86)	(8,147)
DISTRICT V													
GILA	656	1,324	437	887	166,885	254.40	126.05	(17)	(37)	(8,449)	(73)	(206)	(24,360)
PINAL	1,872	4,157	1,067	3,090	496,264	265.10	119.38	1	(4)	1,216	(33)	(93)	(7,143)
DISTRICT VI													
COCHISE	967	1,904	500	1,404	247,308	255.75	129.89	1	(10)	(370)	(12)	(63)	(3,549)
GRAHAM	366	698	207	491	91,701	250.55	131.38	8	23	3,905	(29)	(75)	(8,293)
GREENLEE	32	64	14	50	7,970	249.06	124.53	(3)	(11)	(1,201)	(21)	(50)	(6,465)
SANTA CRUZ	256	548	116	432	67,281	262.82	122.78	2	5	(258)	18	71	6,053

1/EXCLUDES: PRIOR MONTH NET TOTALS OF 1,826 CASES; 4,451 RECIPIENTS; \$380,585.  
 1/GRANT DIVERSION TOTALS OF: 262 CASES; \$261,642.  
 ZERO PAY TOTALS OF 990 CASES; 2,853 RECIPIENTS.

	CURRENT MO. CASES	CURRENT MO. RECIP.	CURRENT MO. DOLLARS	PRIOR MO. CASES	PRIOR MO. RECIP.	PRIOR MO. DOLLARS
PASQUAYAOUI	293	803	\$88,604	18	52	2,661
WM APACHE	679	1,830	\$206,159	17	52	2,135
SALT RIVER	83	277	\$24,907	7	27	1,189
SAN CARLOS	622	1,265	\$160,752	0	0	0
HOPAI	151	417	\$35,344	12	33	1,769
<b>TOTAL</b>	<b>1,828</b>	<b>4,592</b>	<b>\$515,766</b>	<b>54</b>	<b>164</b>	<b>\$7,754</b>

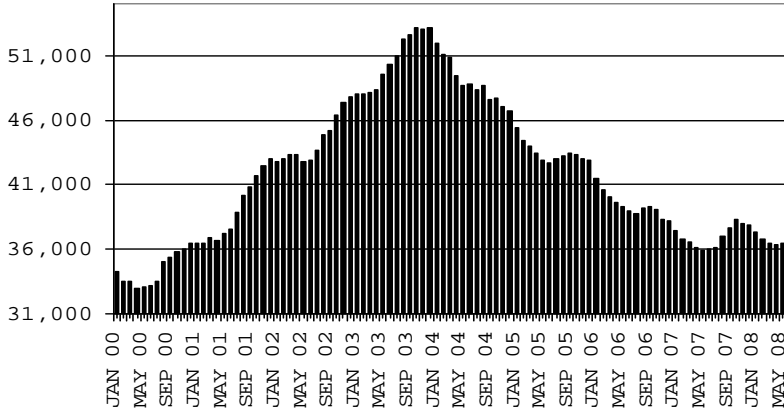
# TANF SUMMARY

TABLES 1, 1A, 1B, & 1C

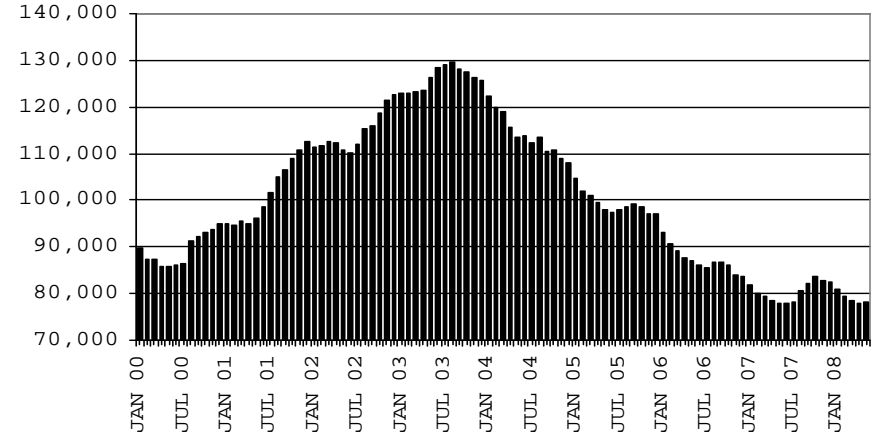
COMPARISON OF CASES, RECIPIENTS, PAYMENTS & AVERAGE PAYMENTS

FOR 2000, 2001, 2002, 2003, 2004, 2005, 2006, & 2007

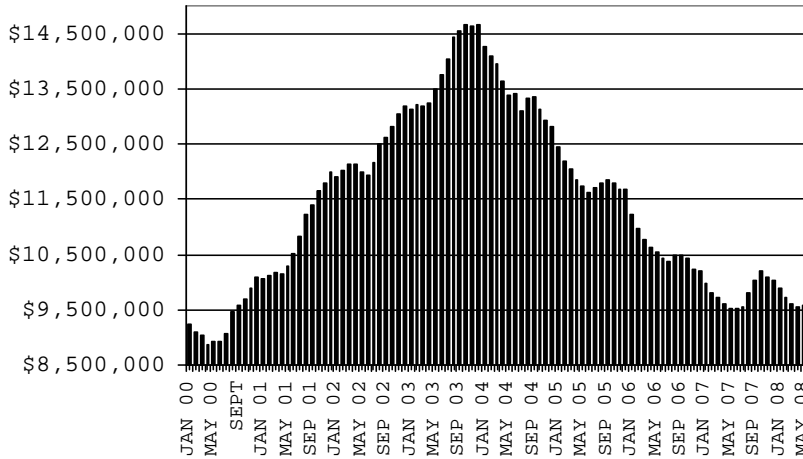
**CASES**



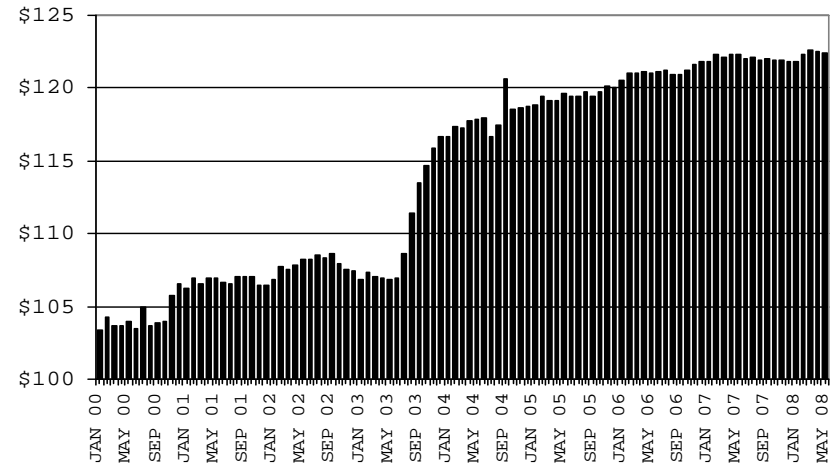
**RECIPIENTS**



**PAYMENTS**



**AVERAGE PAYMENTS PER RECIPIENT**



**TABLE 1**  
**CASH ASSISTANCE: ARIZONA 1.**

	MAY 2008							CHANGE FROM					
								APRIL 2008			MAY 2007		
	FAMILIES (CASES)	(RECIP.)	ADULTS	CHILDREN	TOTAL PAYMENTS	AVERAGE PAYMENT/ CASE	AVERAGE PAYMENT/ RECIP.	FAMILIES (CASES)	PERSONS (RECIP.)	TOTAL PAYMENTS	FAMILIES (CASES)	PERSONS (RECIP.)	TOTAL PAYMENTS
ARIZONA	34,890	73,930	17,237	56,693	9,250,095	265.12	125.12	69	176	18,382	240	(349)	(21,021)
DISTRICT I													
MARICOPA	19,756	42,716	9,417	33,299	5,295,696	268.06	123.97	97	213	24,157	752	1,401	167,370
DISTRICT II													
PIMA	6,470	13,078	3,231	9,847	1,688,159	260.92	129.08	(66)	(154)	(19,506)	(197)	(781)	(81,216)
DISTRICT III													
APACHE	92	171	48	123	23,046	250.50	134.77	0	4	(121)	(17)	(72)	(7,102)
COCONINO	231	475	109	366	56,807	245.92	119.59	12	18	2,354	(19)	(44)	(6,257)
NAVAJO	1,198	2,828	751	2,077	325,736	271.90	115.18	3	32	2,834	(100)	(291)	(33,881)
YAVAPAI	654	1,264	271	993	163,486	249.98	129.34	8	33	3,620	33	53	7,152
DISTRICT IV													
LA PAZ	210	438	135	303	53,158	253.13	121.37	(2)	(22)	(1,458)	(11)	(34)	(5,037)
MOHAVE	1,295	2,629	724	1,905	336,275	259.67	127.91	(5)	(1)	(114)	6	21	1,048
YUMA	1,041	2,235	470	1,765	276,301	265.42	123.62	42	120	13,781	(30)	(86)	(8,913)
DISTRICT V													
GILA	621	1,226	378	848	157,730	253.99	128.65	(17)	(35)	(7,452)	(63)	(185)	(23,543)
PINAL	1,775	3,833	931	2,902	472,362	266.12	123.24	(4)	(15)	35	(49)	(169)	(13,430)
DISTRICT VI													
COCHISE	919	1,789	462	1,327	238,820	259.87	133.49	(4)	(27)	(1,632)	(28)	(92)	(7,024)
GRAHAM	351	662	190	472	88,885	253.23	134.27	9	23	3,699	(35)	(92)	(9,681)
GREENLEE	30	61	13	48	7,870	262.33	129.02	(3)	(11)	(1,201)	(21)	(48)	(6,181)
SANTA CRUZ	247	525	107	418	65,764	266.25	125.26	(1)	(2)	(614)	19	70	5,674

1/EXCLUDES: PRIOR MONTH NET TOTALS OF: 1,011 CASES; 2,568 RECIPIENTS; \$301,837.  
GRANT DIVERSION TOTALS OF: 262 CASES; \$261,642  
ZERO PAY TOTALS OF 983 CASES; 2,829 RECIPIENTS.

	CURRENT MO. CASES	CURRENT MO. RECIP.	CURRENT MO. DOLLARS	PRIOR MO. CASES	PRIOR MO. RECIP	PRIOR MO. DOLLARS
PASQUAYAAQUI	279	742	83,491	16	43	2,273
WM APACHE	621	1,569	181,257	14	42	1,811
SALT RIVER	83	277	24,907	7	27	1,189
SAN CARLOS	594	1,179	151,783	0	0	0
HOPI	150	414	34,997	12	33	1,769
<b>TOTAL</b>	<b>1,727</b>	<b>4,181</b>	<b>476,435</b>	<b>49</b>	<b>145</b>	<b>7,042</b>

CASES WITH GRANT UNDER \$100 (SEE TABLE 1B).

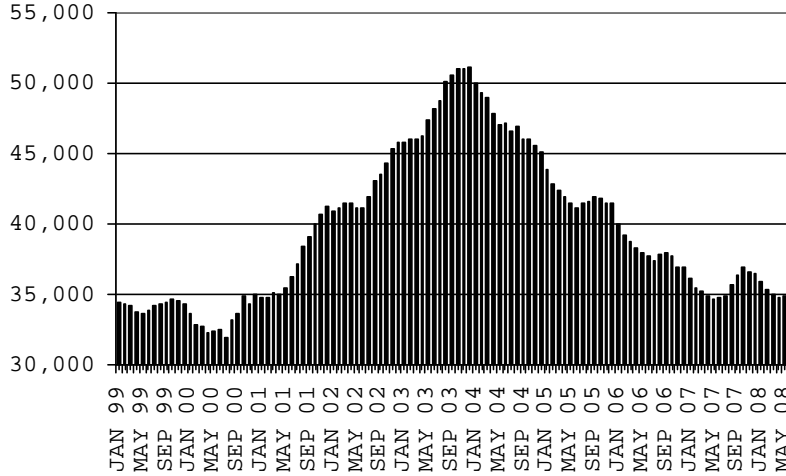
# CHART 1

## CASH ASSISTANCE PROGRAM

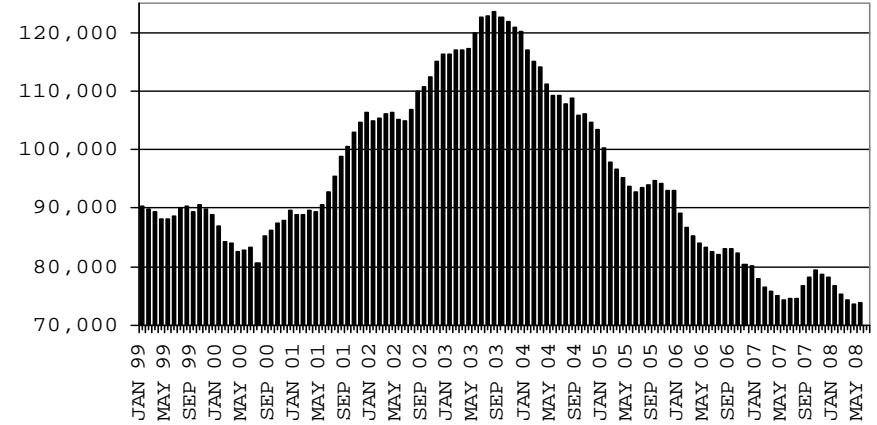
### COMPARISON OF CASES, RECIPIENTS, PAYMENTS & AVERAGE PAYMENTS

FOR 1999, 2000, 2001, 2002, 2003, 2004, 2005, 2006 & 2007

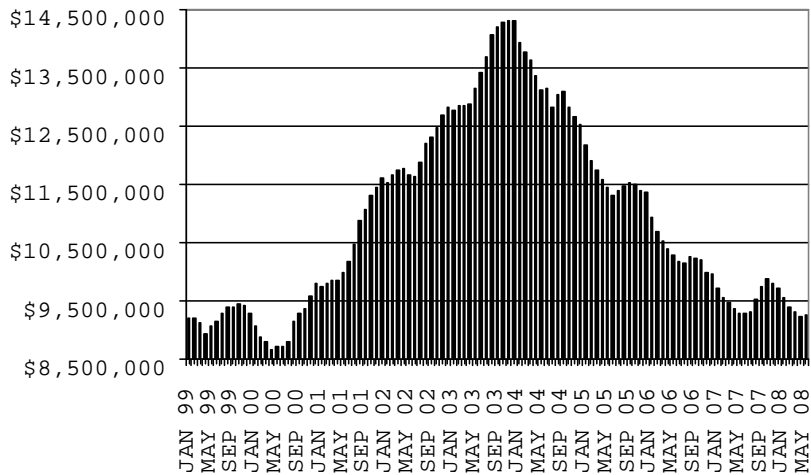
#### CASES



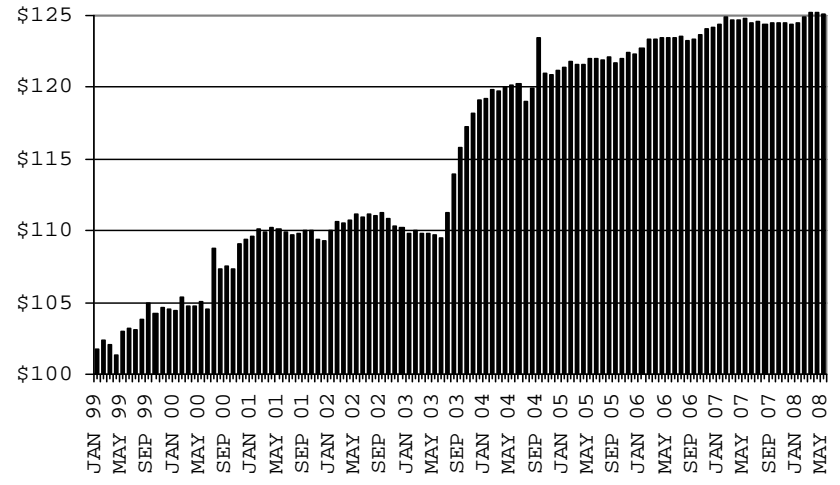
#### RECIPIENTS



#### PAYMENTS



#### AVERAGE PAYMENTS PER RECIPIENT



**TABLE 1A  
CA-UP**

**CASH ASSISTANCE UNEMPLOYED PARENT PROGRAM: ARIZONA 1**

	MAY 2008							CHANGE FROM			MAY 2007		
	FAMILIES (CASES)	PERSONS (RECIP.)	ADULTS	CHILDREN	TOTAL PAYMENTS	AVERAGE PAYMENT/ CASE	AVERAGE PAYMENT/ RECIP.	FAMILIES (CASES)	PERSONS (RECIP.)	TOTAL PAYMENTS	FAMILIES (CASES)	PERSONS (RECIP.)	TOTAL PAYMENTS
ARIZONA	819	2,920	1,222	1,698	284,563	347.45	97.45	29	72	9,114	285	907	92,076
DISTRICT I													
MARICOPA	376	1,240	472	768	125,396	333.50	101.13	11	31	2,366	160	462	48,499
DISTRICT II													
PIMA	140	542	231	311	49,837	355.98	91.95	9	37	2,968	49	187	15,495
DISTRICT III													
APACHE	3	13	6	7	1,325	441.67	101.92	1	5	489	(2)	(6)	(120)
COCONINO	8	26	12	14	2,780	347.50	106.92	3	8	995	4	9	1,429
NAVAJO	87	360	158	202	34,809	400.10	96.69	(5)	(25)	(680)	14	59	6,263
YAVAPAI	13	46	16	30	4,440	341.54	96.52	0	0	(1)	6	27	2,155
DISTRICT IV													
LA PAZ	15	51	23	28	4,393	292.87	86.14	4	10	1,276	6	18	1,154
MOHAVE	41	163	77	86	15,556	379.41	95.44	(6)	(26)	(2,350)	14	45	5,620
YUMA	20	73	27	46	6,925	346.25	94.86	8	28	2,829	4	9	971
DISTRICT V													
GILA	26	79	49	30	8,385	322.50	106.14	(3)	(12)	(1,242)	(1)	(4)	(139)
PINAL	61	230	109	121	21,013	344.48	91.36	1	(5)	841	18	64	6,618
DISTRICT VI													
COCHISE	19	62	23	39	6,216	327.16	100.26	4	13	926	9	24	2,642
GRAHAM	7	26	14	12	2,448	349.71	94.15	1	6	408	4	15	1,465
GREENLEE	0	0	0	0	0	0.00	0.00	0	0	0	(1)	(3)	(347)
SANTA CRUZ	3	9	5	4	1,040	346.67	115.56	1	2	289	1	1	371

1/EXCLUDES: PRIOR MONTH NET TOTALS OF: 75 CASES; 270 RECIPIENTS; \$26,166.  
GRANT DIVERSION TOTALS OF: 0 CASES; \$0.  
ZERO PAY TOTALS OF 7 CASES; 24 RECIPIENTS.

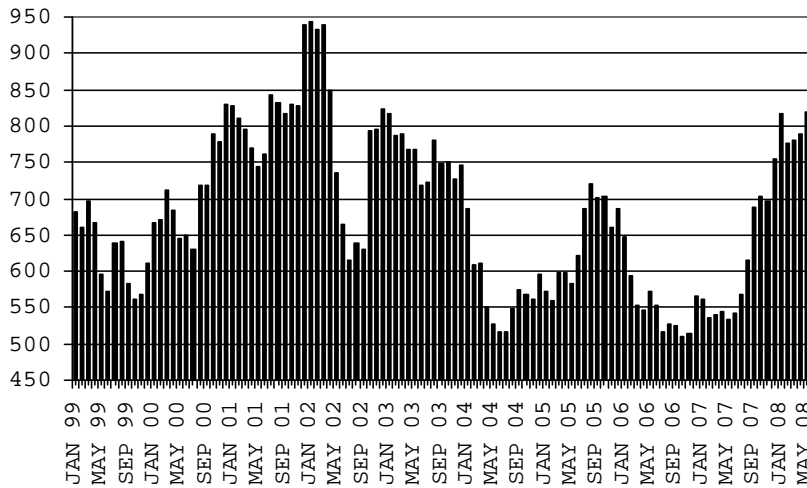
	CURRENT MO. CASES	CURRENT MO. RECIP.	CURRENT MO. DOLLARS	PRIOR MO. CASES	PRIOR MO. RECIP.	PRIOR MO. DOLLARS
PASQUAYUQUI	14	61	5,113	2	9	388
WM APACHE	58	261	24,902	3	10	324
SALT RIVER	0	0	0	0	0	0
SAN CARLOS	28	86	8,969	0	0	0
HOPAI	1	3	347	0	0	0
<b>TOTAL</b>	<b>101</b>	<b>411</b>	<b>39,331</b>	<b>5</b>	<b>19</b>	<b>712</b>

CASES WITH GRANT UNDER \$100 (SEE TABLE 1C).

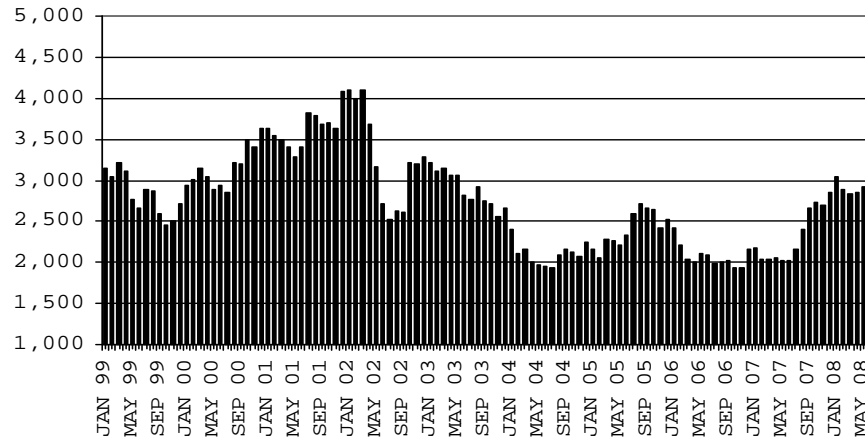
# CHART 1A

## CASH ASSISTANCE UNEMPLOYED PARENT PROGRAM COMPARISON OF CASES, RECIPIENTS, PAYMENTS & AVERAGE PAYMENTS FOR 1999, 2000, 2001, 2002, 2003, 2004, 2005, 2006 & 2007

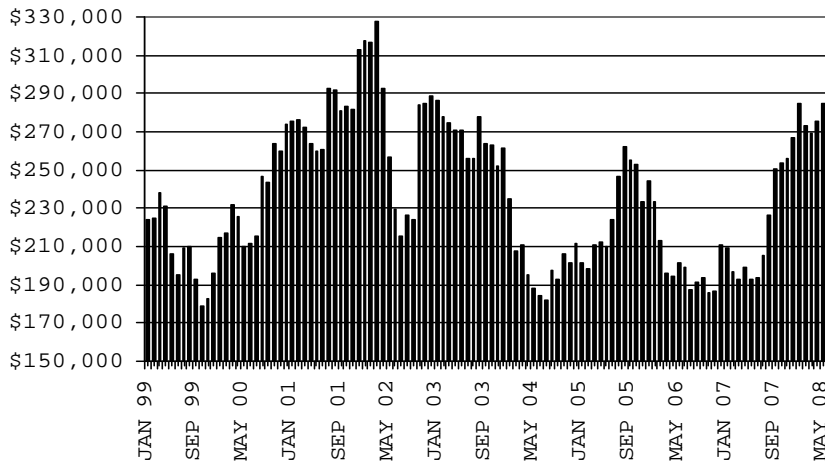
### CASES



### RECIPIENTS



### PAYMENTS



### AVERAGE PAYMENTS PER RECIPIENT

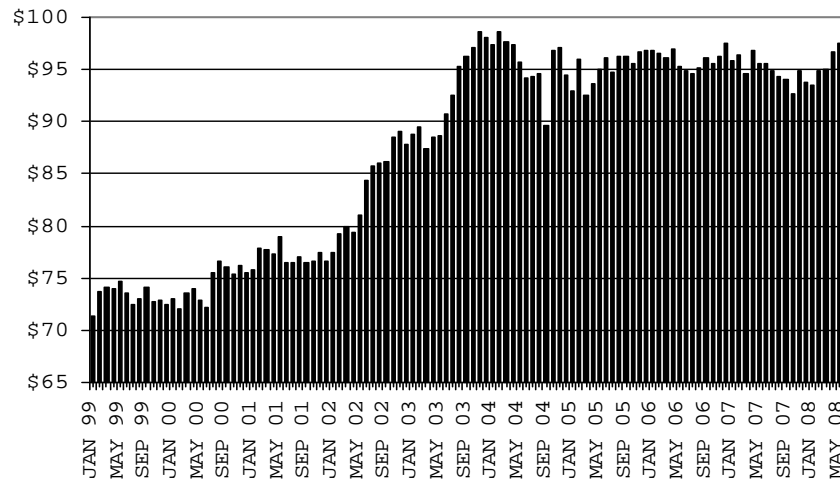




TABLE 1B 1/

CASH ASSISTANCE: ARIZONA  
CASES WITH GRANT UNDER \$100

	MAY 2008							CHANGE FROM			MAY 2007		
					AVERAGE	AVERAGE							
	FAMILIES (CASES)	PERSONS (RECIP.)	ADULTS	CHILDREN	TOTAL PAYMENTS	PAYMENT/ CASE	PAYMENT/ RECIP.	FAMILIES (CASES)	PERSONS (RECIP.)	TOTAL PAYMENTS	FAMILIES (CASES)	PERSONS (RECIP.)	TOTAL PAYMENTS
ARIZONA	689	1,399	374	1,025	49,956	72.51	35.71	16	41	1,422	(25)	(73)	(2,619)
DISTRICT I													
MARICOPA	374	747	174	573	25,943	69.37	34.73	21	34	1,570	(22)	(91)	(2,847)
DISTRICT II													
PIMA	127	269	79	190	10,647	83.83	39.58	(4)	(1)	460	(4)	5	841
DISTRICT III													
APACHE	3	5	2	3	189	63.00	37.80	0	0	0	(6)	(13)	(401)
COCONINO	4	7	2	5	201	50.25	28.71	(4)	(8)	(320)	(4)	(10)	(226)
NAVAJO	6	10	3	7	301	50.17	30.10	(3)	(5)	(681)	(3)	(7)	(468)
YAVAPAI	18	34	11	23	987	54.83	29.03	(1)	(4)	(284)	0	2	(173)
DISTRICT IV													
LA PAZ	7	12	6	6	406	58.00	33.83	(3)	(7)	(141)	6	11	302
MOHAVE	39	84	29	55	2,806	71.95	33.40	0	8	(220)	15	43	794
YUMA	23	45	12	33	1,654	71.91	36.76	3	0	232	(2)	(9)	(205)
DISTRICT V													
GILA	8	16	8	8	765	95.63	47.81	3	9	314	(10)	(20)	(683)
PINAL	35	90	25	65	2,840	81.14	31.56	3	12	291	(3)	8	(380)
DISTRICT VI													
COCHISE	29	53	15	38	2,272	78.34	42.87	1	4	336	7	5	833
GRAHAM	8	10	3	7	368	46.00	36.80	(2)	(6)	(202)	2	2	(77)
GREENLEE	2	3	1	2	100	50.00	33.33	0	0	0	1	1	63
SANTA CRUZ	6	14	4	10	477	79.50	34.07	2	5	67	(2)	0	8

EXCLUDES: PRIOR MONTH NET TOTALS OF 700 CASES; 1,480 RECIPIENTS; \$50,810.

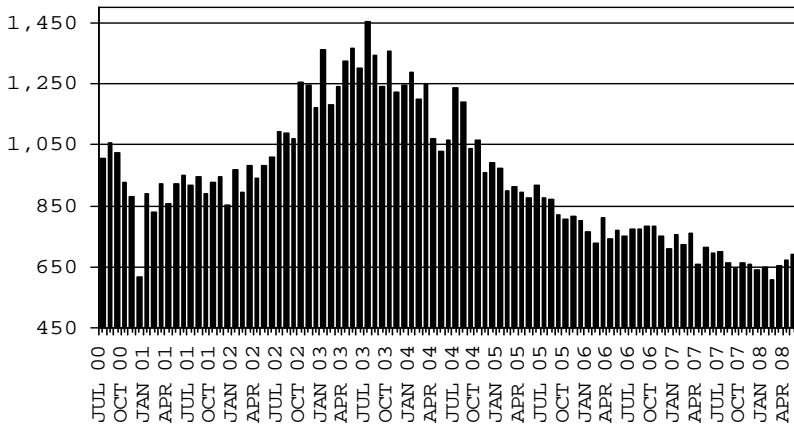
# CHART 1B

## CASH ASSISTANCE PROGRAM CASES WITH GRANT UNDER \$100

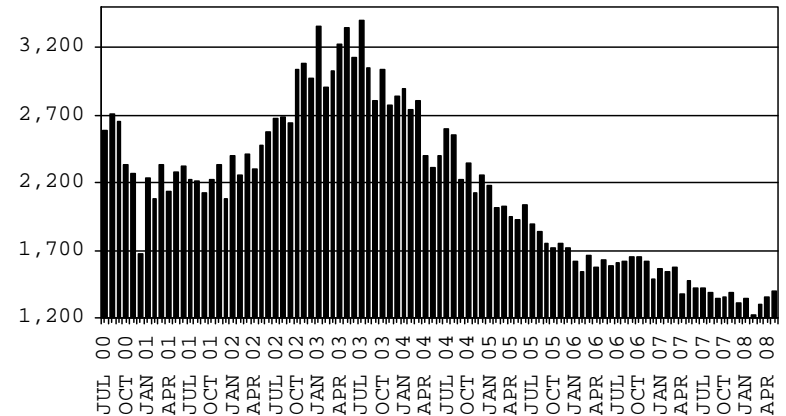
### COMPARISON OF CASES, RECIPIENTS, PAYMENTS & AVERAGE PAYMENTS

FOR 2000, 2001, 2002, 2003, 2004, 2005, 2006 & 2007

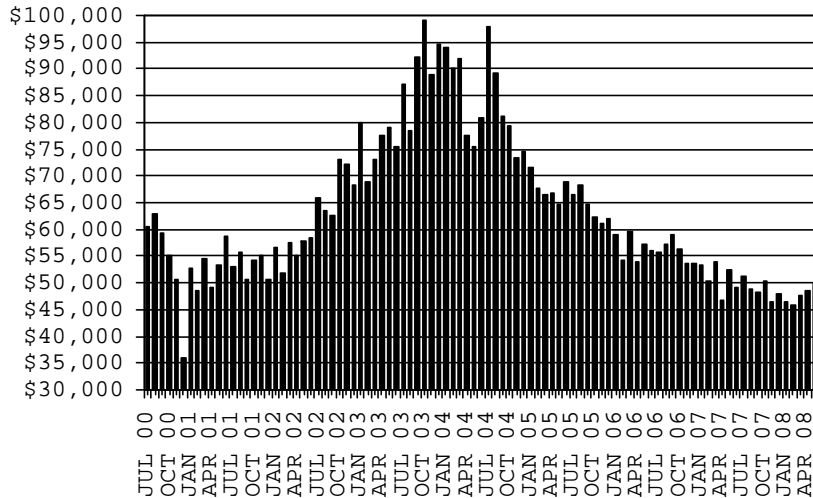
**CASES**



**RECIPIENTS**



**PAYMENTS**



**AVERAGE PAYMENTS PER RECIPIENT**

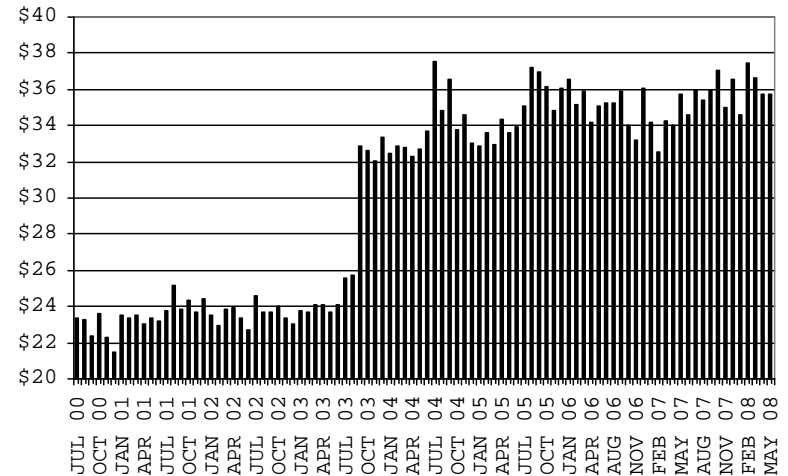


TABLE 1C 1/

CASH ASSISTANCE UNEMPLOYED PARENT PROGRAM: ARIZONA  
 CASES WITH GRANT UNDER \$100

	MAY 2008								CHANGE FROM			MAY 2007		
					AVERAGE	AVERAGE								
	FAMILIES (CASES)	PERSONS (RECIP.)	ADULTS	CHILDREN	TOTAL PAYMENTS	PAYMENT/ CASE	PAYMENT/ RECIP.	FAMILIES (CASES)	PERSONS (RECIP.)	TOTAL PAYMENTS	FAMILIES (CASES)	PERSONS (RECIP.)	TOTAL PAYMENTS	
ARIZONA	20	61	26	35	1,137	56.85	18.64	9	32	539	12	36	641	
DISTRICT I														
MARICOPA	12	35	12	23	794	66.17	22.69	6	21	499	9	25	618	
DISTRICT II														
PIMA	4	13	6	7	159	39.75	12.23	3	12	110	0	1	(63)	
DISTRICT III														
APACHE	0	0	0	0	0	0.00	0.00	0	0	0	(1)	(3)	(98)	
COCONINO	0	0	0	0	0	0.00	0.00	0	0	0	0	0	0	
NAVAJO	0	0	0	0	0	0.00	0.00	0	0	0	0	0	0	
YAVAPAI	1	3	2	1	33	33.00	11.00	0	0	(44)	1	3	33	
DISTRICT IV														
LA PAZ	0	0	0	0	0	0.00	0.00	(1)	(4)	(39)	0	0	0	
MOHAVE	1	3	2	1	97	97.00	32.33	1	3	97	1	3	97	
YUMA	0	0	0	0	0	0.00	0.00	(1)	(5)	(64)	0	0	0	
DISTRICT V														
GILA	1	3	2	1	5	5.00	1.67	0	1	(69)	1	3	5	
PINAL	1	4	2	2	49	49.00	12.25	1	4	49	1	4	49	
DISTRICT VI														
COCHISE	0	0	0	0	0	0.00	0.00	0	0	0	0	0	0	
GRAHAM	0	0	0	0	0	0.00	0.00	0	0	0	0	0	0	
GREENLEE	0	0	0	0	0	0.00	0.00	0	0	0	0	0	0	
SANTA CRUZ	0	0	0	0	0	0.00	0.00	0	0	0	0	0	0	

EXCLUDES: PRIOR MONTH NET TOTALS OF 40 CASES; 133 RECIPIENTS; \$1,772.

# CHART 1C

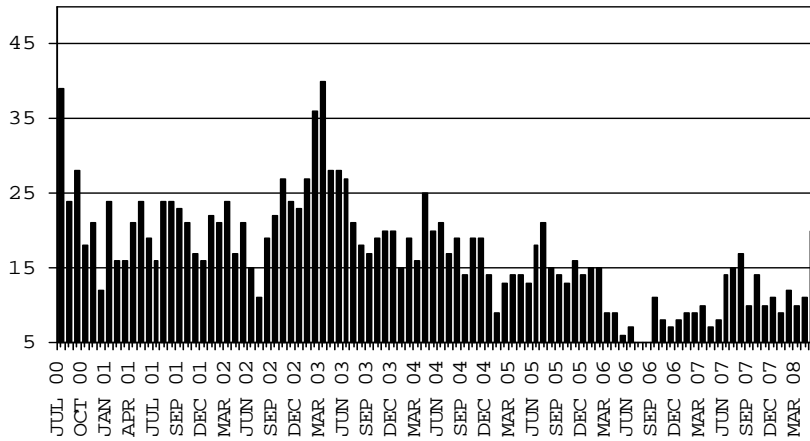
## CASH ASSISTANCE UNEMPLOYED PARENT PROGRAM

### CASES WITH GRANT UNDER \$100

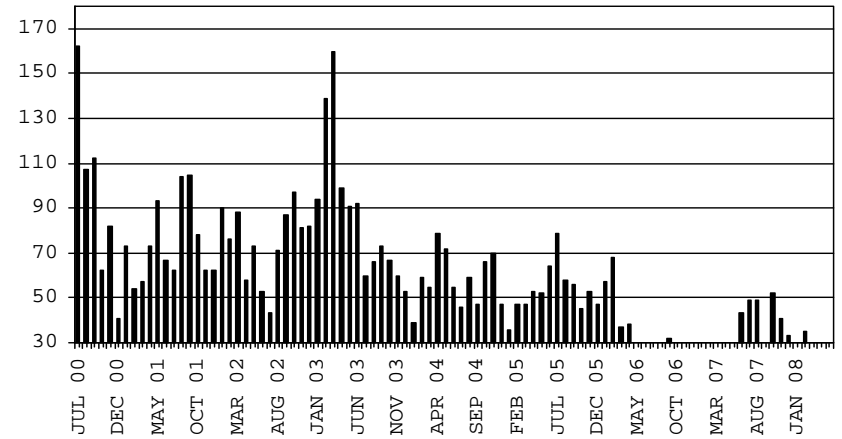
#### COMPARISON OF CASES, RECIPIENTS, PAYMENTS & AVERAGE PAYMENTS

FOR 2000, 2001, 2002, 2003, 2004, 2005, 2006 & 2007

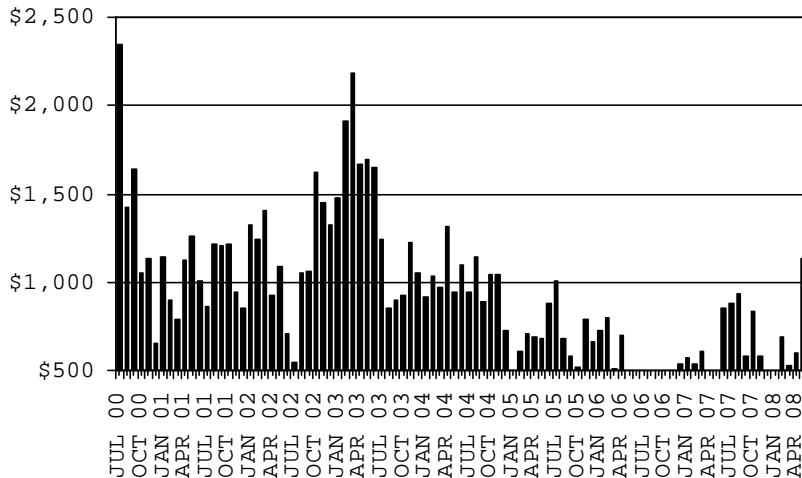
**CASES**



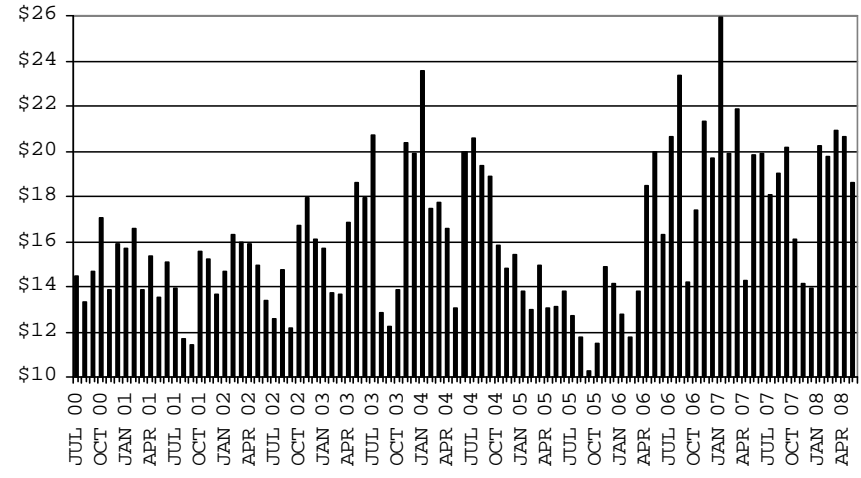
**RECIPIENTS**



**PAYMENTS**



**AVERAGE PAYMENTS PER RECIPIENT**



**TABLE 2**  
**GENERAL ASSISTANCE: ARIZONA 1,**

	CHANGE FROM											
	MAY 2008					APRIL 2008			MAY 2007			
	NUMBER OF CASES	PERSONS (RECIP.)	TOTAL PAYMENTS	AVERAGE PAYMENT/ CASE	AVERAGE PAYMENT/ RECIP.	NUMBER OF CASES	PERSONS (RECIP.)	TOTAL PAYMENTS	NUMBER OF CASES	PERSONS (RECIP.)	TOTAL PAYMENTS	
ARIZONA	1,404	1,407	213,225	151.87	151.55	6	4	449	135	131	19,796	
DISTRICT I												
MARICOPA	566	567	86,541	152.90	152.63	22	22	3,214	57	57	8,295	
DISTRICT II												
PIMA	363	363	54,480	150.08	150.08	2	2	282	29	28	4,753	
DISTRICT III	131	132	19,755	150.80	149.66	(11)	(13)	(1,884)	3	0	(350)	
APACHE	12	13	2,006	167.17	154.31	(3)	(4)	(514)	(1)	(2)	25	
COCONINO	22	22	3,286	149.36	149.36	(1)	(1)	(32)	1	0	63	
NAVAJO	37	37	5,816	157.19	157.19	(5)	(5)	(606)	10	9	1,410	
YAVAPAI	60	60	8,647	144.12	144.12	(2)	(3)	(732)	(7)	(7)	(1,848)	
DISTRICT IV	155	155	22,932	147.95	147.95	8	8	1,342	23	22	2,924	
LA PAZ	10	10	1,317	131.70	131.70	0	0	42	1	1	(45)	
MOHAVE	109	109	16,760	153.76	153.76	4	4	673	32	32	4,570	
YUMA	36	36	4,855	134.86	134.86	4	4	627	(10)	(11)	(1,601)	
DISTRICT V	120	121	18,165	151.38	150.12	(13)	(13)	(2,254)	11	12	1,663	
GILA	24	24	3,502	145.92	145.92	(8)	(8)	(994)	2	2	432	
PINAL	96	97	14,663	152.74	151.16	(5)	(5)	(1,260)	9	10	1,231	
DISTRICT VI	69	69	11,352	164.52	164.52	(2)	(2)	(251)	12	12	2,511	
COCHISE	48	48	7,849	163.52	163.52	(4)	(4)	(627)	5	5	1,300	
GRAHAM	14	14	2,422	173.00	173.00	2	2	346	3	3	584	
GREENLEE	3	3	454	151.33	151.33	0	0	0	3	3	454	
SANTA CRUZ	4	4	627	156.75	156.75	0	0	30	1	1	173	

1/EXCLUDES: PRIOR MONTH NET TOTALS OF : 253 CASES; 253 RECIPIENTS; \$61,541.  
REFUGEE RESETTLEMENT PROGRAM: 99 CASES; 145 RECIPIENTS; \$27,528.

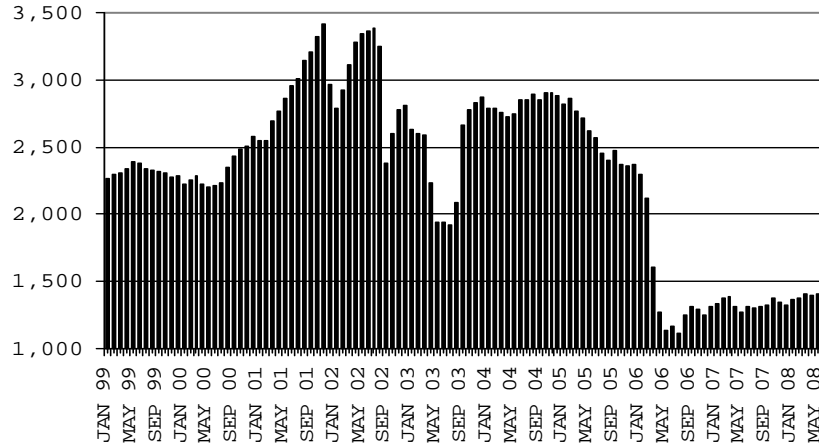
# CHART 2

## GENERAL ASSISTANCE PROGRAM

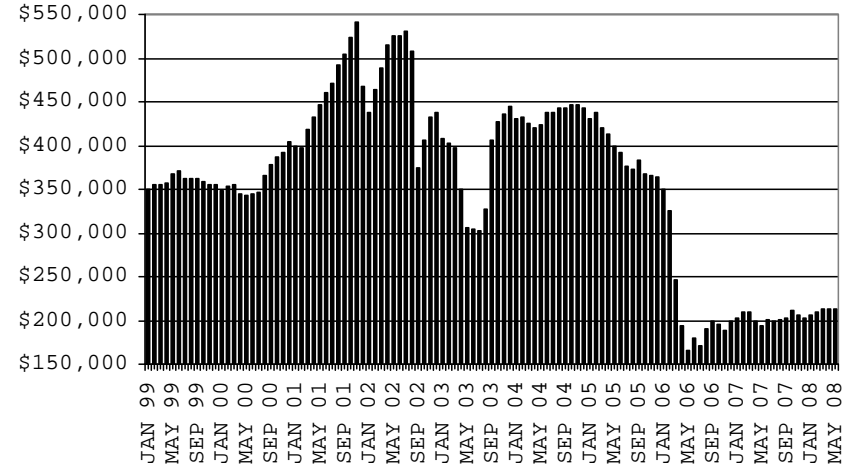
### COMPARISON OF CASES, PAYMENTS & AVERAGE PAYMENTS

FOR 1999, 2000, 2001, 2002, 2003, 2004, 2005, 2006 & 2007

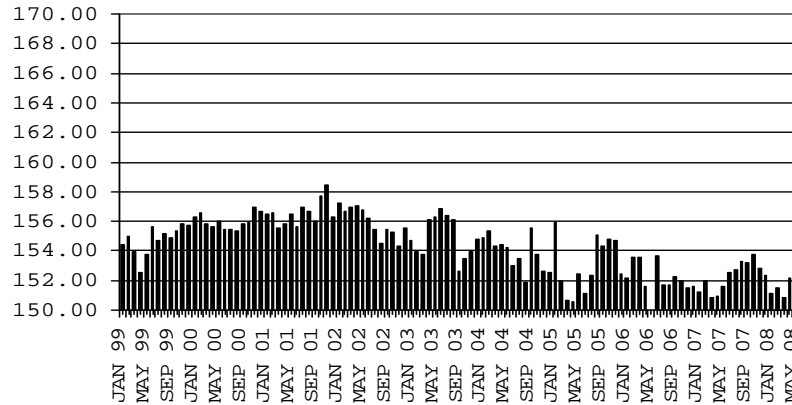
**CASES**



**PAYMENTS**



**AVERAGE PAYMENT PER CASE**



**TABLE 4**

**TUBERCULOSIS CONTROL: ARIZONA 1/**

	MAY 2008					CHANGE FROM					
						APRIL 2008			MAY 2007		
	NUMBER OF CASES	PERSONS (RECIP.)	TOTAL PAYMENTS	AVERAGE PAYMENT/ CASE	AVERAGE PAYMENT/ RECIP.	NUMBER OF CASES	PERSONS (RECIP.)	TOTAL PAYMENTS	NUMBER OF CASES	PERSONS (RECIP.)	TOTAL PAYMENTS
ARIZONA	10	10	1,210	121.00	121.00	1	1	108	(2)	(2)	(184)
DISTRICT I											
MARICOPA	9	9	1,102	122.44	122.44	1	1	108	(3)	(3)	(292)
DISTRICT II											
PIMA	0	0	0	0.00	0.00	0	0	0	0	0	0
DISTRICT III	1	1	108	108.00	108.00	0	0	0	1	1	108
APACHE	0	0	0	0.00	0.00	0	0	0	0	0	0
COCONINO	0	0	0	0.00	0.00	0	0	0	0	0	0
NAVAJO	0	0	0	0.00	0.00	0	0	0	0	0	0
YAVAPAI	1	1	108	108.00	108.00	0	0	0	1	1	108
DISTRICT IV	0	0	0	0.00	0.00	0	0	0	0	0	0
LA PAZ	0	0	0	0.00	0.00	0	0	0	0	0	0
MOHAVE	0	0	0	0.00	0.00	0	0	0	0	0	0
YUMA	0	0	0	0.00	0.00	0	0	0	0	0	0
DISTRICT V	0	0	0	0.00	0.00	0	0	0	0	0	0
GILA	0	0	0	0.00	0.00	0	0	0	0	0	0
PINAL	0	0	0	0.00	0.00	0	0	0	0	0	0
DISTRICT VI	0	0	0	0.00	0.00	0	0	0	0	0	0
COCHISE	0	0	0	0.00	0.00	0	0	0	0	0	0
GRAHAM	0	0	0	0.00	0.00	0	0	0	0	0	0
GREENLEE	0	0	0	0.00	0.00	0	0	0	0	0	0
SANTA CRUZ	0	0	0	0.00	0.00	0	0	0	0	0	0

1/EXCLUDES: PRIOR MONTH NET TOTALS OF : 0 CASES; 0 RECIPIENTS; \$0.

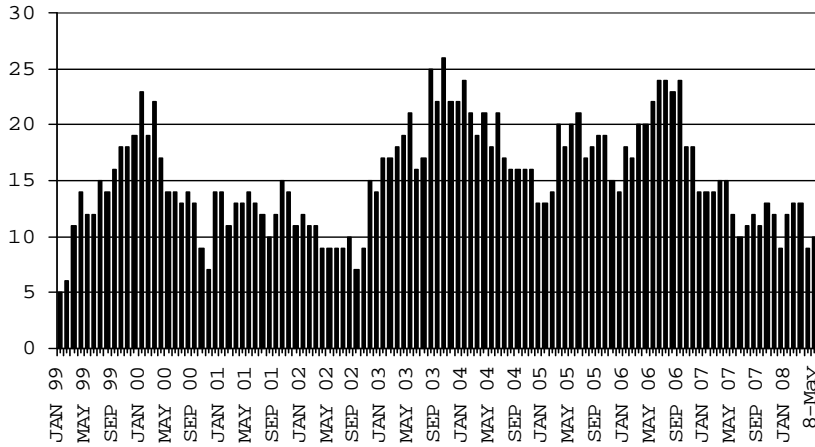
# CHART 4

## TUBERCULOSIS CONTROL PROGRAM

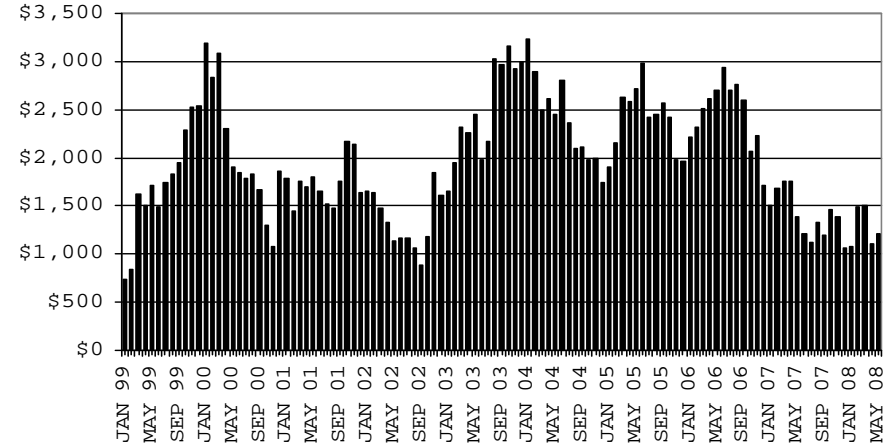
### COMPARISON OF CASES, PAYMENTS & AVERAGE PAYMENTS

FOR 1999, 2000, 2001, 2002, 2003, 2004, 2005, 2006 & 2007

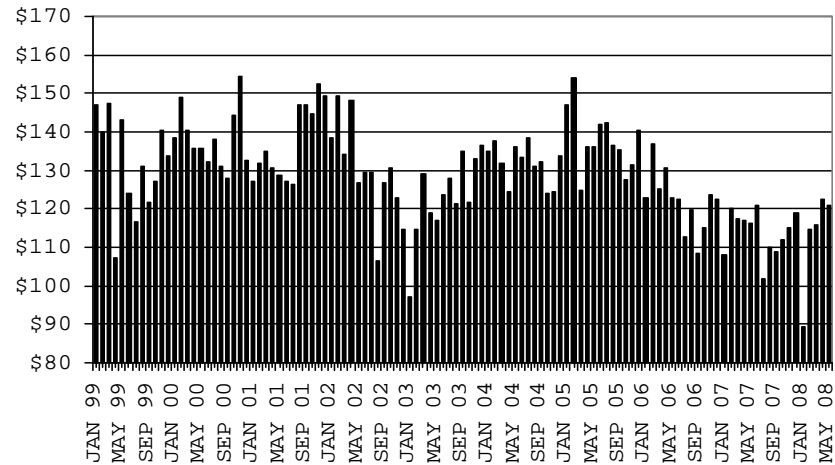
**CASES**



**PAYMENTS**



**AVERAGE PAYMENT PER CASE**





**TABLE 6**

**FOOD STAMP PROGRAM: ARIZONA 1/**

	CHANGE FROM										
	MAY 2008					APRIL 2008			MAY 2007		
	HOUSEHOLDS	PERSONS	TOTAL COUPON ISSUANCE	AVERAGE ALLOT./ HOUSEHOLD	AVERAGE ALLOT./ PERSON	HOUSEHOLDS	PERSONS	TOTAL COUPON ISSUANCE	HOUSEHOLDS	PERSONS	TOTAL COUPON ISSUANCE
ARIZONA	263,699	638,780	64,100,253	243.08	100.35	4,698	12,225	1,064,658	42,724	97,518	11,441,195
DISTRICT I											
MARICOPA	132,786	323,529	33,123,454	249.45	102.38	2,060	5,966	541,703	23,289	55,527	6,489,425
DISTRICT II											
PIMA	47,144	107,017	10,724,113	227.48	100.21	959	1,904	126,908	7,738	15,941	1,866,832
DISTRICT III											
APACHE	6,502	19,708	1,920,504	295.37	97.45	143	253	21,833	496	968	214,048
COCONINO	6,030	17,289	1,641,340	272.20	94.94	60	133	1,499	995	2,246	260,810
NAVAJO	9,959	27,694	2,679,100	269.01	96.74	51	(47)	(13,625)	976	2,542	328,688
YAVAPAI	7,580	15,347	1,493,826	197.07	97.34	86	157	13,990	1,426	2,987	291,811
DISTRICT IV											
LA PAZ	1,329	2,884	297,846	224.11	103.28	11	21	1,538	88	134	24,103
MOHAVE	12,361	25,698	2,625,227	212.38	102.16	200	399	21,532	2,442	4,586	520,274
YUMA	10,461	28,147	2,579,694	246.60	91.65	598	2,115	254,057	1,146	2,810	296,364
DISTRICT V											
GILA	3,702	8,553	859,617	232.20	100.50	19	29	(3,225)	468	876	106,866
PINAL	13,368	33,788	3,402,326	254.51	100.70	321	975	73,974	2,336	6,141	696,368
DISTRICT VI											
COCHISE	7,322	16,153	1,563,622	213.55	96.80	109	170	20,829	852	1,568	204,725
GRAHAM	2,228	5,284	504,859	226.60	95.54	58	45	5,232	194	454	60,008
GREENLEE	241	496	48,832	202.62	98.45	2	9	(192)	(22)	(74)	(5,166)
SANTA CRUZ	2,686	7,193	635,893	236.74	88.40	21	96	(1,395)	300	812	86,039

1/EXCLUDES: PRIOR MONTH NET TOTALS OF : 8,956 CASES; 23,892 RECIPIENTS; \$1,153,032.  
 AGED CANCELATIONS: 0 CASES; 0 RECIPIENTS; 0.  
 FS COUPON CONVERSIONS: 0 CASES; 0 RECIPIENTS; \$0.  
 FS REINSTATED: 0 CASES; \$0.  
 FS ZERO PAY: 7,783 CASES; 31,670 RECIPIENTS.

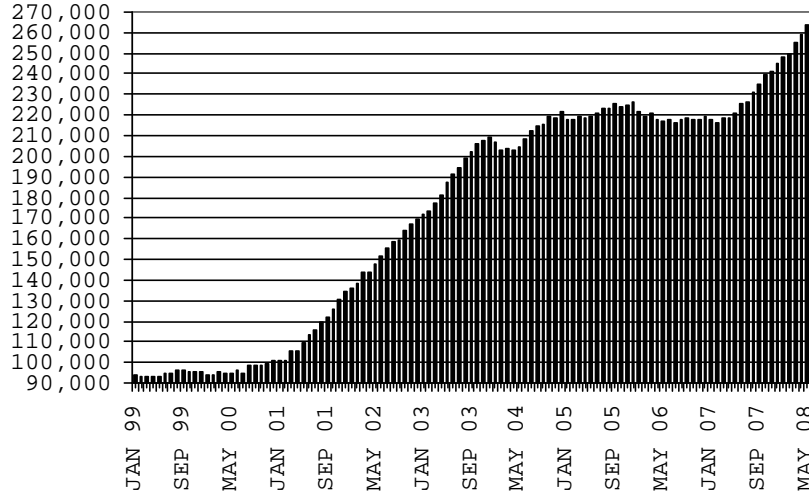
# CHART 6

## FOOD STAMPS PROGRAM

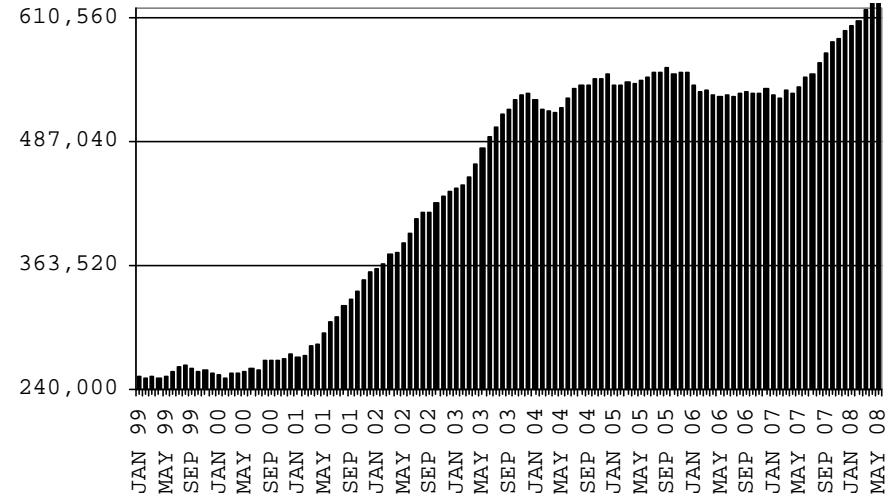
### COMPARISON OF HOUSEHOLDS, RECIPIENTS, PAYMENTS & AVERAGE PAYMENTS

FOR 1999, 2000, 2001, 2002, 2003, 2004, 2005, 2006 & 2007

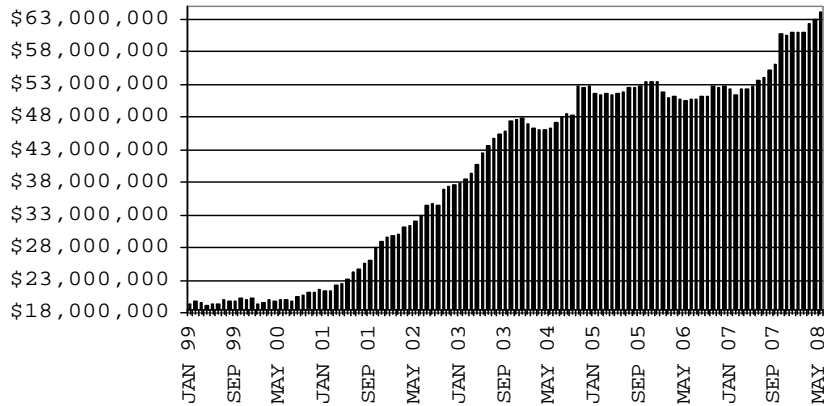
#### HOUSEHOLDS



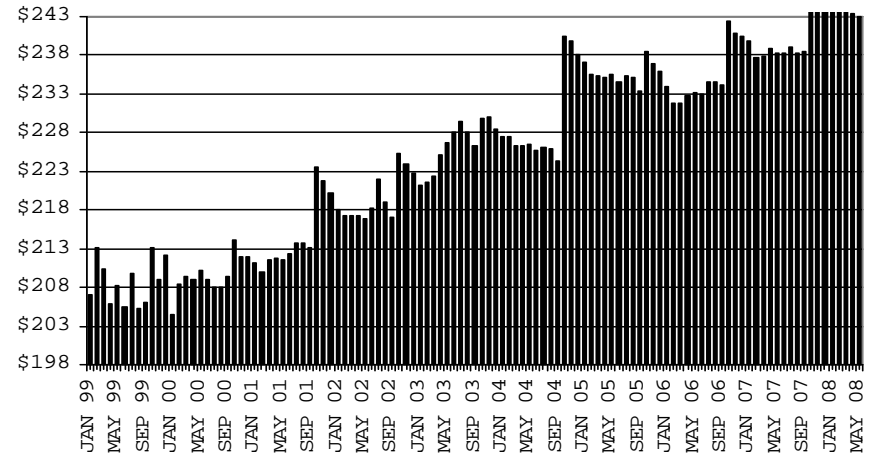
#### RECIPIENTS



#### TOTAL PAYMENTS



#### AVERAGE PAYMENT PER HOUSEHOLD



**TABLE 7A**  
**MEDICAL ASSISTANCE PROGRAM**  
**RECIPIENTS**

**MAY 2008**

	SOBRA WOMAN 133% FPL	SOBRA CHILD	ADULT W/O CHILD 100% FPL	FOSTER CARE	1931 36% FPL	FEDERAL EMERGENCY SERVICES	INFANTS	ADULT W/O CHILD 40% FPL	MEDICAL W/SPEND DOWN	SOBRA WOMAN 100% FPL	SOBRA CHILD 100% FPL	TRANSITIONAL MEDICAL T1 - T4	1931 100% FPL	YATI	OTHER	TOTAL CASES
ARIZONA	11,682	61,795	39,445	10,139	267,132	84,189	50,063	97,528	5,024	3,520	167,414	41,866	80,688	250	22,889	943,624
DISTRICT I																
MARICOPA	6,016	34,784	17,102	5,073	141,657	65,097	30,084	43,661	2,722	1,773	93,991	20,064	37,811	129	11,315	511,279
DISTRICT II																
PIMA	1,781	9,575	7,814	2,856	41,183	10,435	7,009	18,239	729	566	26,243	6,933	14,678	74	4,089	152,204
DISTRICT III																
APACHE	248	1,389	863	43	10,347	99	953	4,259	42	74	3,703	966	2,198	2	361	25,547
COCONINO	357	1,397	1,210	119	7,295	554	1,200	3,095	96	99	3,710	1,095	2,211	7	354	22,799
NAVAJO	364	2,013	1,298	123	11,169	327	1,446	4,919	126	125	4,614	1,299	2,927	2	539	31,291
YAVAPAI	414	1,730	1,762	456	5,595	1,550	1,325	3,056	197	109	4,193	1,320	2,596	12	947	25,262
DISTRICT IV																
LA PAZ	40	206	210	15	1,127	174	180	545	38	20	647	173	333	1	141	3,850
MOHAVE	548	2,074	2,076	249	9,655	857	1,587	5,125	326	168	6,475	1,940	3,778	3	1,226	36,087
YUMA	586	2,354	2,267	257	10,031	2,005	1,860	3,318	204	202	7,959	3,292	4,880	0	1,220	40,435
DISTRICT V																
GILA	148	687	552	79	3,844	135	473	1,998	96	34	1,612	538	1,002	1	280	11,479
PINAL	640	3,557	1,846	517	13,995	1,701	2,213	5,193	230	172	7,114	2,010	3,867	13	1,125	44,193
DISTRICT VI																
COCHISE	259	1,035	1,351	248	6,128	640	853	2,444	135	92	3,536	1,055	2,235	6	747	20,764
GRAHAM	137	416	392	63	2,049	67	379	873	26	23	1,130	404	715	0	130	6,804
GREENLEE	23	30	35	11	286	9	56	115	6	4	110	49	63	0	24	821
SANTA CRUZ	121	548	667	30	2,771	539	445	688	51	59	2,377	728	1,394	0	391	10,809

**TABLE 7B**

**MEDICAL ASSISTANCE PROGRAM**

**RECIPIENTS**

**CHANGE FROM**

**APRIL 2008**

	SOBRA WOMAN 133% FPL	SOBRA CHILD	ADULT W/O CHILD 100% FPL	FOSTER CARE	1931 36% FPL	FEDERAL EMERGENCY SERVICES	INFANTS	ADULT W/O CHILD 40% FPL	MEDICAL W/SPEND DOWN	SOBRA WOMAN 100% FPL	SOBRA CHILD 100% FPL	TRANSITIONAL MEDICAL T1 - T4	1931 100% FPL	YATI	OTHER	TOTAL CASES
ARIZONA	(8)	(335)	120	165	1,273	(856)	87	501	(218)	(25)	1,590	(1,084)	1,066	4	(292)	1,988
DISTRICT I																
MARICOPA	46	(68)	135	89	897	(580)	94	251	(26)	(25)	685	(331)	553	5	(127)	1,598
DISTRICT II																
PIMA	(19)	(12)	67	15	(101)	(156)	(4)	52	(56)	(2)	313	(56)	155	(1)	(86)	109
DISTRICT III																
APACHE	(13)	(15)	(40)	3	(173)	1	5	(25)	0	(11)	45	80	18	0	(2)	(127)
COCONINO	(13)	(66)	(35)	3	(128)	4	(15)	(16)	(7)	(1)	77	(55)	19	(1)	(10)	(244)
NAVAJO	(6)	(20)	(20)	7	(154)	(3)	9	31	(36)	13	(19)	38	(10)	1	(10)	(179)
YAVAPAI	(4)	(75)	(18)	26	20	(62)	3	23	(9)	(11)	0	13	25	0	(6)	(75)
DISTRICT IV																
LA PAZ	1	0	(8)	0	(14)	(20)	3	(4)	1	(1)	14	(30)	(9)	0	(5)	(72)
MOHAVE	(2)	18	2	8	15	(14)	22	43	(24)	(5)	7	54	7	1	(15)	117
YUMA	(7)	(19)	90	4	882	39	(38)	108	3	19	258	(786)	231	0	12	796
DISTRICT V																
GILA	7	(22)	(20)	(3)	(19)	(6)	(5)	16	(2)	0	22	49	7	(1)	(14)	9
PINAL	5	(66)	(14)	11	29	(20)	25	4	(42)	2	173	7	97	0	(17)	194
DISTRICT VI																
COCHISE	12	40	8	0	(28)	(27)	(23)	14	(3)	0	(15)	(31)	(46)	0	(7)	(106)
GRAHAM	(6)	(4)	(8)	2	6	(1)	5	2	0	(7)	39	(16)	14	0	1	27
GREENLEE	(1)	(3)	(6)	0	22	(2)	(1)	8	0	2	3	(2)	3	0	(2)	21
SANTA CRUZ	(8)	(23)	(13)	0	19	(9)	7	(6)	(17)	2	(12)	(18)	2	0	(4)	(80)

**TABLE 7C**  
**MEDICAL ASSISTANCE PROGRAM**  
**RECIPIENTS**

**CHANGE FROM**

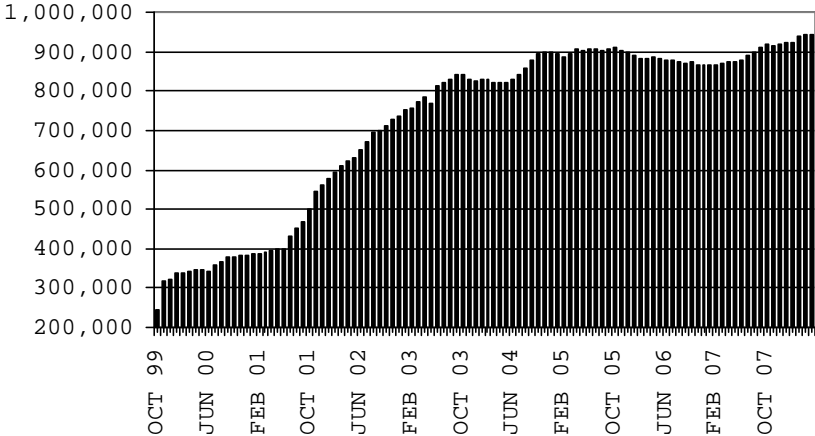
MAY 2007

	SOBRA WOMAN 133% FPL	SOBRA CHILD	ADULT W/O CHILD 100% FPL	FOSTER CARE	1931 36% FPL	FEDERAL EMERGENCY SERVICES	INFANTS	ADULT W/O CHILD 40% FPL	MEDICAL W/SPEND DOWN	SOBRA WOMAN 100% FPL	SOBRA CHILD 100% FPL	TRANSITIONAL MEDICAL T1 - T4	3E 1931 100% FPL	YATI	OTHER	TOTAL CASES
ARIZONA	361	3,273	3,584	1,216	20,247	(250)	825	17,912	(187)	132	14,436	(2,482)	7,884	23	2,618	69,592
DISTRICT I																
MARICOPA	191	2,668	1,911	593	14,878	358	429	9,533	(218)	90	10,194	(1,435)	4,553	11	1,372	45,128
DISTRICT II																
PIMA	78	593	761	365	2,582	(61)	157	3,888	122	16	1,854	(371)	1,439	7	468	11,898
DISTRICT III	(78)	(23)	109	104	1,083	(41)	125	1,642	(182)	(10)	693	(543)	487	1	188	3,555
APACHE	(11)	54	(69)	3	100	(6)	2	257	(14)	(10)	(163)	(256)	(147)	2	26	(232)
COCONINO	(48)	57	83	2	268	18	63	327	(7)	8	204	(223)	139	(1)	23	913
NAVAJO	8	(88)	(39)	17	342	(3)	136	482	(72)	(6)	277	(76)	181	(1)	40	1,198
YAVAPAI	(27)	(46)	134	82	373	(50)	(76)	576	(89)	(2)	375	12	314	1	99	1,676
DISTRICT IV	104	2	423	24	609	(312)	12	1,538	9	47	884	371	642	0	314	4,667
LA PAZ	(5)	(16)	7	(3)	(37)	(12)	10	12	9	3	4	(11)	(3)	1	8	(33)
MOHAVE	78	(7)	272	25	819	(87)	5	1,220	20	19	525	402	330	2	166	3,789
YUMA	31	25	144	2	(173)	(213)	(3)	306	(20)	25	355	(20)	315	(3)	140	911
DISTRICT V	34	86	267	118	954	(140)	61	887	58	(21)	685	(255)	566	4	148	3,452
GILA	8	(86)	42	(2)	112	(15)	10	208	25	(8)	23	(18)	62	(2)	36	395
PINAL	26	172	225	120	842	(125)	51	679	33	(13)	662	(237)	504	6	112	3,057
DISTRICT VI	32	(53)	113	12	141	(54)	41	424	24	10	126	(249)	197	0	128	892
COCHISE	9	(40)	98	9	41	(61)	4	284	32	12	55	(155)	136	2	83	509
GRAHAM	3	11	20	4	(35)	12	17	88	(2)	(16)	55	(161)	76	(2)	13	83
GREENLEE	(3)	(8)	(7)	0	(25)	3	2	10	(1)	0	(31)	(3)	(21)	0	(1)	(85)
SANTA CRUZ	23	(16)	2	(1)	160	(8)	18	42	(5)	14	47	70	6	0	33	385

# CHART 7

## MEDICAL ASSISTANCE PROGRAM COMPARISON OF RECIPIENTS FOR 1999, 2000, 2001, 2002, 2003, 2004, 2005, 2006 & 2007

TOTAL RECIPIENTS



NEW SERIES WHICH INCLUDES 1931