



State of Arizona

Department of Economic Security

Family Assistance Administration

Statistical Bulletin

September, 2008

Phone: (602) 542-3678

<http://www.azdes.gov/faa/Statistics.asp>

**** STATISTICAL BULLETIN ****
ARIZONA DEPARTMENT OF ECONOMIC SECURITY
FAMILY ASSISTANCE ADMINISTRATION
BOX 6123, PHOENIX, ARIZONA 85005
PHONE (602) 542-3678

SEPTEMBER 2008

THIS ISSUE OF THE STATISTICAL BULLETIN COMPARES SEPTEMBER 2008 DATA FOR EACH OF THE INDICATED PROGRAMS WITH THE INFORMATION FOR AUGUST 2008 AND SEPTEMBER 2007. STATEWIDE SUMMARIES OF ACTIVITY WITHIN EACH OF THE SPECIFIC PROGRAMS FOR THIS REPORT PERIOD ARE DISCUSSED BELOW. THE TABLES COMPARE CURRENT AND PRIOR MONTH DATA. DISTRICT AND COUNTY COMPARISONS ARE PROVIDED WITHIN THIS BULLETIN

CASH ASSISTANCE (CA)

COMPARING TO AUGUST 2008, SEPTEMBER 2008 CASES INCREASED BY 308 (0.87%) TO 35,870. RECIPIENTS INCREASED BY 599 (0.79%) TO 76,247. PAYMENTS INCREASED BY \$61,002 (0.65%) TO \$9,481,584. AVERAGE PAYMENT PER CASE DECREASED BY \$0.58 (0.22%) TO \$264.33. PAYMENT PER RECIPIENT DECREASED BY \$0.18 (0.14%) TO \$124.35.

COMPARING TO SEPTEMBER 2007, SEPTEMBER 2008 CASES DECREASED BY 471 (1.30%). RECIPIENTS DECREASED BY 1,956 (2.50%). TOTAL PAYMENTS DECREASED BY \$251,959 (2.59%). THE AVERAGE PAYMENT PER CASE DECREASED BY \$3.51 (1.31%). THE AVERAGE PAYMENT PER RECIPIENT DECREASED BY \$0.12 (0.10%).

CASH ASSISTANCE UNEMPLOYED PARENT PROGRAM (CA-UP)

COMPARING TO AUGUST 2008, SEPTEMBER 2008 CASES INCREASED BY 70 (7.37%) TO 1,020. RECIPIENTS INCREASED BY 285 (8.09%) TO 3,809. PAYMENTS INCREASED BY \$27,474 (8.18%) TO \$363,459. AVERAGE PAYMENT PER CASE INCREASED BY \$2.66 (0.75%) TO \$356.33. PAYMENT PER RECIPIENT INCREASED BY \$0.08 (0.08%) TO \$95.42.

COMPARING TO SEPTEMBER 2007, SEPTEMBER 2008 CASES INCREASED BY 332 (48.26%). RECIPIENTS INCREASED BY 1,146 (43.03%). TOTAL PAYMENTS INCREASED BY \$112,969 (45.10%). THE AVERAGE PAYMENT PER CASE DECREASED BY \$7.76 (2.13%). THE AVERAGE PAYMENT PER RECIPIENT INCREASED BY \$1.36 (1.44%).

CASH ASSISTANCE WITH GRANT UNDER \$100 (CA-MOE)

COMPARING TO AUGUST 2008, SEPTEMBER 2008 CASES INCREASED BY 18 (2.60%) TO 710. RECIPIENTS INCREASED BY 48 (3.44%) TO 1,445. PAYMENTS INCREASED BY \$235 (0.47%) TO \$50,745. AVERAGE PAYMENT PER CASE DECREASED BY \$1.52 (2.08%) TO \$71.47. AVERAGE PAYMENT PER RECIPIENT DECREASED BY \$1.04 (2.88%) TO \$35.12.

COMPARING TO SEPTEMBER 2007, SEPTEMBER 2008 CASES INCREASED BY 64 (9.91%). RECIPIENTS INCREASED BY 103 (7.68%). TOTAL PAYMENTS INCREASED BY \$2,471 (5.12%). THE AVERAGE PAYMENT PER CASE DECREASED BY \$3.26 (4.36%). THE AVERAGE PAYMENT PER RECIPIENT DECREASED BY \$0.85 (2.36%).

CASH ASSISTANCE UNEMPLOYED PARENT PROGRAM WITH GRANT UNDER \$100 (CA-UP-MOE) NEW PROGRAM STARTING 7/01

COMPARING TO AUGUST 2008, SEPTEMBER 2008 CASES INCREASED BY 0 (0.00%) TO 24. RECIPIENTS DECREASED BY 6 (8.22%) TO 67. PAYMENTS INCREASED BY \$22 (1.58%) TO \$1,414. AVERAGE PAYMENT PER CASE INCREASED BY \$0.92 (1.59%) TO \$58.92. PAYMENT PER RECIPIENT INCREASED BY \$2.03 (10.64%) TO \$21.10.

COMPARING TO SEPTEMBER 2007, SEPTEMBER 2008 CASES INCREASED BY 14 (140.00%). RECIPIENTS INCREASED BY 38 (2.73%). TOTAL PAYMENTS INCREASED BY \$830 (142.12%). THE AVERAGE PAYMENT PER CASE INCREASED BY \$0.52 (0.89%). THE AVERAGE PAYMENT PER RECIPIENT INCREASED BY \$0.96 (4.77%).

GENERAL ASSISTANCE (GA)

COMPARING TO AUGUST 2008, SEPTEMBER 2008 CASES INCREASED BY 27 (1.85%) TO 1,484. RECIPIENTS INCREASED BY 27 (1.85%) TO 1,490. PAYMENTS INCREASED BY \$2,133 (0.97%) TO \$222,081. AVERAGE PAYMENT PER CASE DECREASED BY \$1.31 (0.87%) TO \$149.65. AVERAGE PAYMENT PER RECIPIENT DECREASED BY \$1.29 (0.86%) TO \$149.05.

COMPARING TO SEPTEMBER 2007, SEPTEMBER 2008 CASES INCREASED BY 164 (12.42%). RECIPIENTS INCREASED BY 163 (12.28%). TOTAL PAYMENTS INCREASED BY \$18,837 (9.27%). THE AVERAGE PAYMENT PER CASE DECREASED BY \$4.32 (2.81%). THE AVERAGE PAYMENT PER RECIPIENT DECREASED BY \$4.11 (2.68%).

TUBERCULOSIS CONTROL PROGRAM (TC)

COMPARING TO AUGUST 2008, SEPTEMBER 2008 CASES DECREASED BY 1 (12.50%) TO 7. RECIPIENTS DECREASED BY 1 (12.50%) TO 7. PAYMENTS DECREASED BY \$108 (11.63%) TO \$821. AVERAGE PAYMENT PER CASE INCREASED BY \$1.17 (1.00%) TO \$117.29. AVERAGE PAYMENT PER RECIPIENT INCREASED BY \$1.17 (1.00%) TO \$117.29.

COMPARING TO SEPTEMBER 2007, SEPTEMBER 2008 CASES DECREASED BY 4 (36.36%). RECIPIENTS DECREASED BY 4 (36.36%). TOTAL PAYMENTS DECREASED BY \$374 (31.30%). THE AVERAGE PAYMENT PER CASE INCREASED BY \$8.65 (7.97%). THE AVERAGE PAYMENT PER RECIPIENT INCREASED BY \$8.65 (7.97%).

FOOD STAMP PROGRAM (FS)

COMPARING TO AUGUST 2008, SEPTEMBER 2008 FOOD STAMP HOUSEHOLDS INCREASED BY 4,344 (1.56%) TO 282,891. PERSONS RECEIVING FOOD STAMPS INCREASED BY 10,242 (1.52%) TO 685,906. TOTAL COUPON ISSUANCE INCREASED BY \$993,875 (1.46%) TO \$69,063,466. THE AVERAGE HOUSEHOLD ALLOTMENT DECREASED BY \$0.24 (0.10%) TO \$244.13. THE AVERAGE ALLOTMENT PER PERSON DECREASED BY \$0.05 (0.05%) TO \$100.69.

COMPARING TO SEPTEMBER 2007, SEPTEMBER 2008 FOOD STAMP HOUSEHOLDS INCREASED BY 47,857 (20.36%). PERSONS RECEIVING FOOD STAMPS INCREASED BY 110,637 (19.23%). TOTAL COUPON ISSUANCE INCREASED BY \$13,019,343 (23.23%). THE AVERAGE ALLOTMENT PER HOUSEHOLD INCREASED BY \$5.68 (2.38%). THE AVERAGE ALLOTMENT PER PERSON INCREASED BY \$3.27 (3.35%).

MEDICAL ASSISTANCE PROGRAM (MA) NEW TABLE INCLUDES PROP. 204 CATEGORIES

COMPARING TO AUGUST 2008, SEPTEMBER 2008 TOTAL RECIPIENTS TOTAL RECIPIENTS INCREASED BY 14,274 (1.47%). SOBRA WOMEN AT 140% FPL INCREASED BY 108 (0.91%). SOBRA CHILDREN INCREASED BY 368 (0.58%). ADULTS W/O CHILD AT 100% INCREASED BY 890 (2.20%). FOSTER CARE INCREASED BY 95 (0.90%). 1931 AT 36% FPL INCREASED BY 4,156 (1.49%). EMERGENCY SERVICES INCREASED BY 290 (0.35%). INFANTS DECREASED BY 169 (0.34%). ADULT W/O CHILD AT 140% INCREASED BY 2,035 (1.99%). MEDICAL W/SPEND DOWN INCREASED BY 389 (7.57%). SOBRA WOMAN AT 100% INCREASED BY 130 (3.67%). SOBRA CHILD AT 100% INCREASED BY 2,677 (1.57%). TRANSITIONAL MEDICAL INCREASED BY 1,160 (2.82%). 1931 AT 100% INCREASED BY 1,641 (2.00%). YATI DECREASED BY 5 (1.88%). ALL OTHER CATEGORIES INCREASED BY 509 (2.10%).

COMPARING TO SEPTEMBER 2007, SEPTEMBER 2008 TOTAL RECIPIENTS TOTAL RECIPIENTS INCREASED BY 72,148 (7.92%). SOBRA WOMEN AT 140% FPL INCREASED BY 224 (1.90%). SOBRA CHILDREN INCREASED BY 1,967 (3.17%). ADULTS W/O CHILD AT 100% INCREASED BY 3,936 (10.52%). FOSTER CARE INCREASED BY 1,264 (13.48%). 1931 AT 36% FPL INCREASED BY 25,605 (9.91%). EMERGENCY SERVICES DECREASED BY 3,002 (3.46%). INFANTS DECREASED BY 841 (1.65%). ADULT W/O CHILD AT 140% INCREASED BY 18,112 (21.05%). MEDICAL W/SPEND DOWN INCREASED BY 78 (1.43%). SOBRA WOMAN AT 100% INCREASED BY 141 (4.00%). SOBRA CHILD AT 100% INCREASED BY 13,800 (8.68%). TRANSITIONAL MEDICAL INCREASED BY 64 (0.15%). 1931 AT 100% INCREASED BY 7,825 (10.32%). YATI INCREASED BY 27 (11.54%). ALL OTHER CATEGORIES INCREASED BY 2,948 (13.54%).

TANF SUMMARY

TABLES 1, 1A, 1B, & 1C: ARIZONA 1

	SEPTEMBER 2008							AUGUST 2008			CHANGE FROM SEPTEMBER 2007		
	FAMILIES (CASES)	PERSONS (RECIP.)	ADULTS	CHILDREN	TOTAL PAYMENTS	AVERAGE PAYMENT/ CASE	AVERAGE PAYMENT/ RECIP.	FAMILIES (CASES)	PERSONS (RECIP.)	TOTAL PAYMENTS	FAMILIES (CASES)	PERSONS (RECIP.)	TOTAL PAYMENTS
ARIZONA	37,624	81,568	20,025	61,543	9,897,202	263.06	121.34	396	926	88,733	(61)	(669)	(135,689)
DISTRICT I													
MARICOPA	21,434	47,205	10,902	36,303	5,688,519	265.40	120.51	277	621	53,259	1,146	2,481	248,942
DISTRICT II													
PIMA	6,852	14,165	3,647	10,518	1,773,556	258.84	125.21	100	199	28,681	(532)	(1,473)	(176,075)
DISTRICT III													
APACHE	89	185	58	127	23,233	261.04	125.58	(7)	(15)	(814)	(76)	(181)	(17,817)
COCONINO	240	519	127	392	59,967	249.86	115.54	0	21	2,366	(35)	(65)	(7,830)
NAVAJO	1,309	3,207	929	2,278	362,803	277.16	113.13	(15)	(52)	(3,382)	(93)	(206)	(25,622)
YAVAPAI	690	1,320	281	1,039	167,680	243.01	127.03	5	14	1,337	29	51	5,113
DISTRICT IV													
LA PAZ	213	444	143	301	53,399	250.70	120.27	(2)	5	640	(38)	(97)	(11,534)
MOHAVE	1,356	2,865	822	2,043	348,980	257.36	121.81	(19)	(66)	(7,965)	(50)	(122)	(13,859)
YUMA	1,134	2,527	569	1,958	297,587	262.42	117.76	38	131	9,296	(218)	(474)	(61,564)
DISTRICT V													
GILA	745	1,528	549	979	192,079	257.82	125.71	15	29	2,820	(37)	(158)	(16,460)
PINAL	1,883	4,224	1,116	3,108	496,463	263.66	117.53	11	41	1,843	(143)	(390)	(51,776)
DISTRICT VI													
COCHISE	1,022	2,025	529	1,496	263,995	258.31	130.37	0	(5)	1,778	48	87	11,384
GRAHAM	338	662	198	464	84,472	249.92	127.60	(13)	(22)	(3,804)	(57)	(111)	(16,302)
GREENLEE	28	48	10	38	6,615	236.25	137.81	(5)	(19)	(1,147)	(28)	(74)	(8,818)
SANTA CRUZ	291	644	145	499	77,854	267.54	120.89	11	44	3,825	23	63	6,529

1/EXCLUDES: PRIOR MONTH NET TOTALS OF 2,169 CASES; 5,196 RECIPIENTS; \$428,641.
 1/GRANT DIVERSION TOTALS OF: 243 CASES; \$261,748.
 ZERO PAY TOTALS OF 1,084 CASES; 3,250 RECIPIENTS.

	CURRENT MO. CASES	CURRENT MO. RECIP.	CURRENT MO. DOLLARS	PRIOR MO. CASES	PRIOR MO. RECIP.	PRIOR MO. DOLLARS
PASQUA/YAQUI	303	867	\$92,618	19	62	4,987
WM APACHE	687	1,840	\$207,113	10	29	3,000
SALT RIVER	88	319	\$28,567	7	21	721
SAN CARLOS	698	1,472	\$182,649	15	29	1,676
HOPAI	137	395	\$32,634	4	12	543
TOTAL	1,913	4,893	\$543,581	55	153	\$10,927

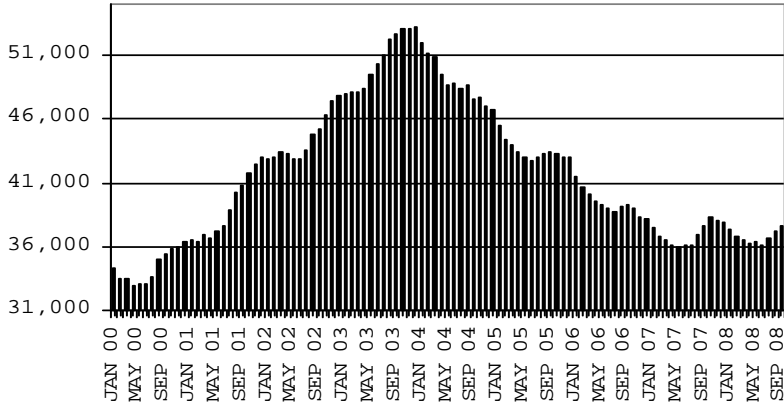
TANF SUMMARY

TABLES 1, 1A, 1B, & 1C

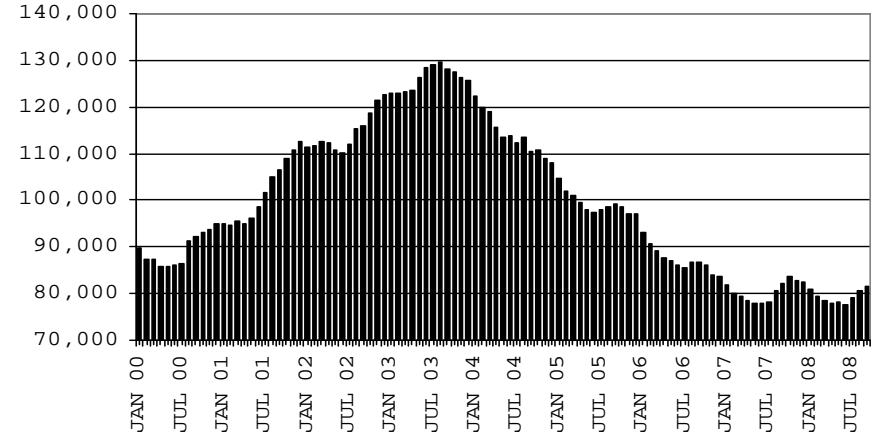
COMPARISON OF CASES, RECIPIENTS, PAYMENTS & AVERAGE PAYMENTS

FOR 2000, 2001, 2002, 2003, 2004, 2005, 2006, & 2007

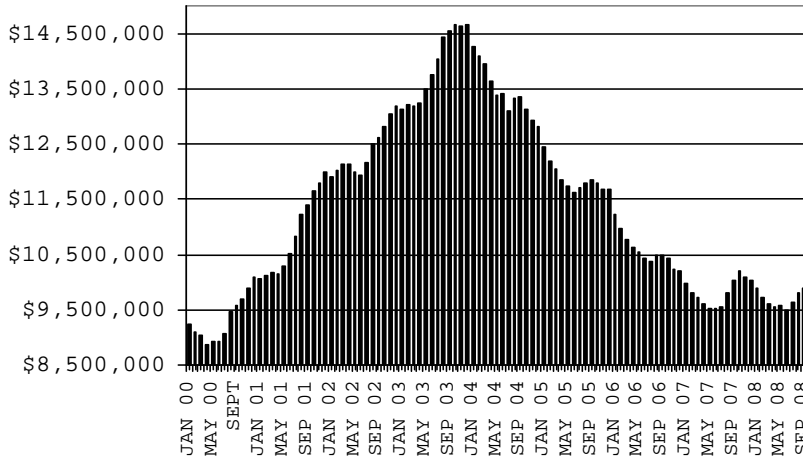
CASES



RECIPIENTS



PAYMENTS



AVERAGE PAYMENTS PER RECIPIENT

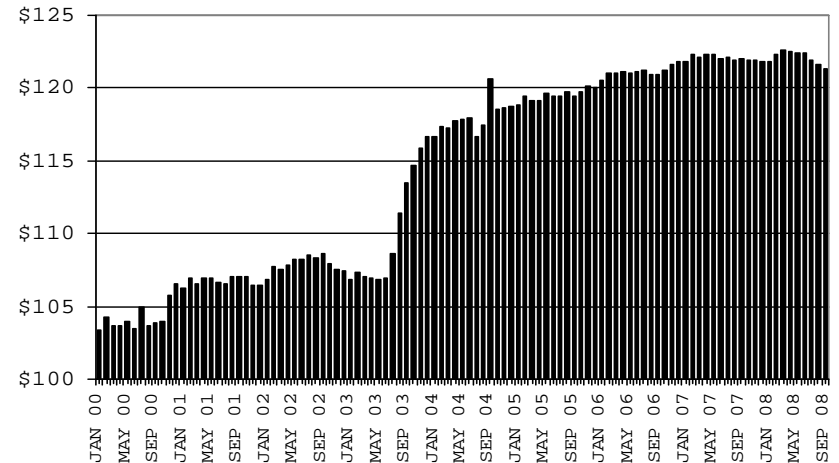


TABLE 1
CASH ASSISTANCE: ARIZONA 1.

	SEPTEMBER 2008							CHANGE FROM					
								AUGUST 2008			SEPTEMBER 2007		
	FAMILIES (CASES)	(RECIP.)	ADULTS	CHILDREN	TOTAL PAYMENTS	AVERAGE PAYMENT/ CASE	AVERAGE PAYMENT/ RECIP.	FAMILIES (CASES)	PERSONS (RECIP.)	TOTAL PAYMENTS	FAMILIES (CASES)	PERSONS (RECIP.)	TOTAL PAYMENTS
ARIZONA	35,870	76,247	18,072	58,175	9,481,584	264.33	124.35	308	599	61,002	(471)	(1,956)	(251,959)
DISTRICT I													
MARICOPA	20,447	44,299	9,943	34,356	5,465,189	267.29	123.37	190	327	30,376	757	1,298	142,752
DISTRICT II													
PIMA	6,565	13,287	3,291	9,996	1,704,951	259.70	128.32	108	206	25,898	(573)	(1,631)	(190,904)
DISTRICT III	2,195	4,773	1,207	3,566	573,616	261.33	120.18	(9)	(7)	491	(190)	(465)	(54,942)
APACHE	81	159	45	114	20,932	258.42	131.65	(7)	(18)	(978)	(71)	(179)	(18,338)
COCONINO	226	479	111	368	57,196	253.08	119.41	(3)	10	1,243	(40)	(85)	(9,713)
NAVAJO	1,222	2,858	778	2,080	330,514	270.47	115.65	(7)	(30)	(1,409)	(105)	(265)	(32,468)
YAVAPAI	666	1,277	273	1,004	164,974	247.71	129.19	8	31	1,635	26	64	5,577
DISTRICT IV	2,540	5,325	1,323	4,002	659,688	259.72	123.89	2	27	(1,337)	(284)	(638)	(82,732)
LA PAZ	204	415	129	286	51,140	250.69	123.23	0	7	648	(32)	(84)	(10,240)
MOHAVE	1,266	2,582	698	1,884	326,422	257.84	126.42	(23)	(66)	(7,751)	(54)	(142)	(16,361)
YUMA	1,070	2,328	496	1,832	282,126	263.67	121.19	25	86	5,766	(198)	(412)	(56,131)
DISTRICT V	2,500	5,323	1,483	3,840	655,001	262.00	123.05	15	34	1,920	(165)	(484)	(60,643)
GILA	734	1,506	537	969	190,655	259.75	126.60	17	36	3,887	0	(23)	(3,620)
PINAL	1,766	3,817	946	2,871	464,346	262.94	121.65	(2)	(2)	(1,967)	(165)	(461)	(57,023)
DISTRICT VI	1,623	3,240	825	2,415	423,139	260.71	130.60	2	12	3,654	(16)	(36)	(5,490)
COCHISE	987	1,943	498	1,445	258,439	261.84	133.01	6	7	3,939	38	68	11,884
GRAHAM	330	642	189	453	83,093	251.80	129.43	(11)	(13)	(2,214)	(48)	(88)	(14,016)
GREENLEE	27	45	8	37	6,542	242.30	145.38	(6)	(22)	(1,220)	(28)	(75)	(8,820)
SANTA CRUZ	279	610	130	480	75,065	269.05	123.06	13	40	3,149	22	59	5,462
1/EXCLUDES:	PRIOR MONTH NET TOTALS OF: 1,173 CASES; 2,855 RECIPIENTS; \$331,118.							CURRENT			PRIOR		
	GRANT DIVERSION TOTALS OF: 243 CASES; \$261,748.							CURRENT	MO.	CURRENT MO.	PRIOR MO.	MO.	PRIOR
	ZERO PAY TOTALS OF 1,074 CASES; 3,199 RECIPIENTS.							MO. CASES	RECIP.	DOLLARS	CASES	RECIP.	DOLLARS
							PASQUA/YAQUI	288	791	85,961	16	51	4,514
							WM APACHE	637	1,616	185,756	10	29	3,000
							SALT RIVER	88	319	28,567	7	21	721
							SAN CARLOS	695	1,462	181,995	15	29	1,676
							HOPI	137	395	32,634	4	12	543
							TOTAL	1,845	4,583	514,913	52	142	10,454
CASES WITH GRANT UNDER \$100 (SEE TABLE 1B).													

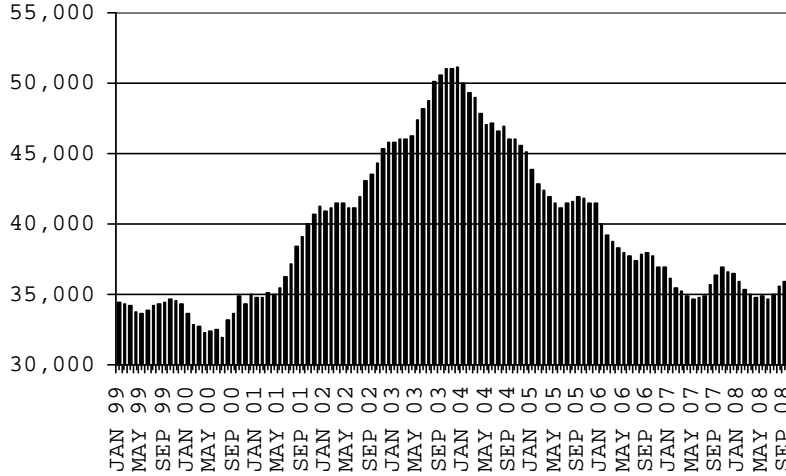
CHART 1

CASH ASSISTANCE PROGRAM

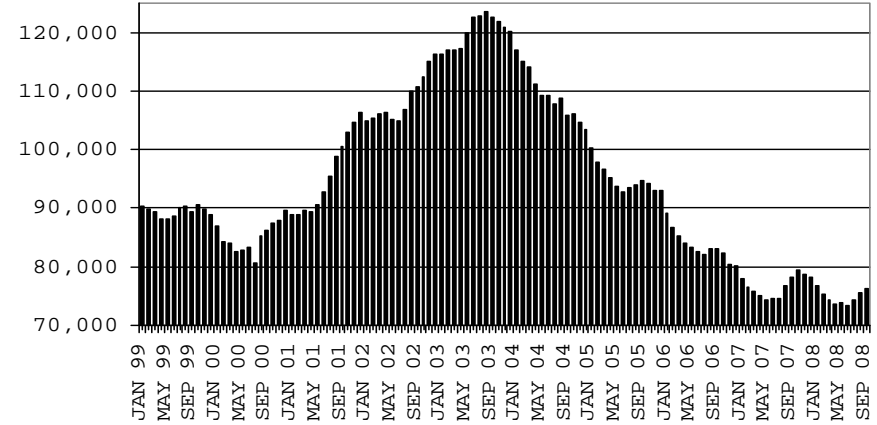
COMPARISON OF CASES, RECIPIENTS, PAYMENTS & AVERAGE PAYMENTS

FOR 1999, 2000, 2001, 2002, 2003, 2004, 2005, 2006 & 2007

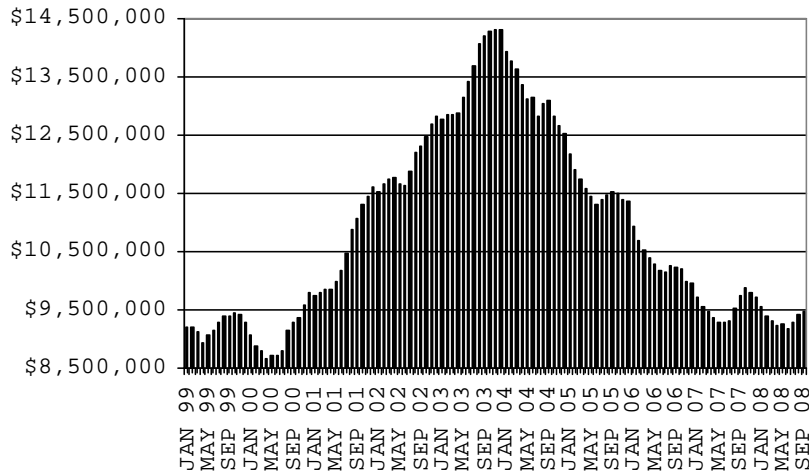
CASES



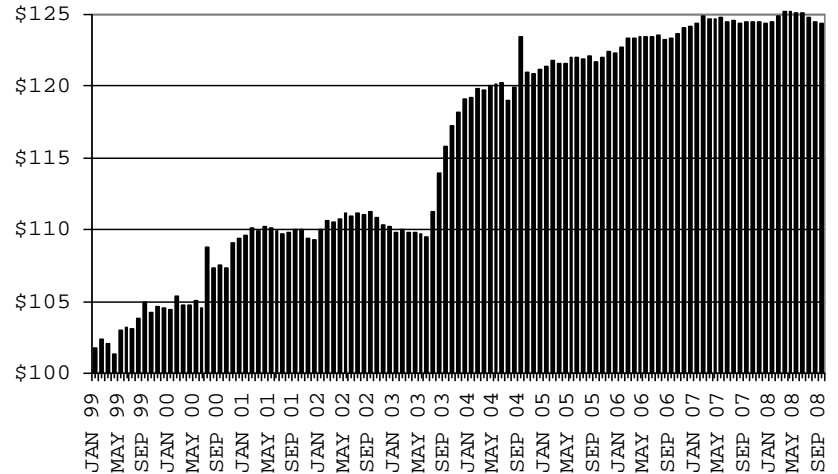
RECIPIENTS



PAYMENTS



AVERAGE PAYMENTS PER RECIPIENT



**TABLE 1A
CA-UP**

CASH ASSISTANCE UNEMPLOYED PARENT PROGRAM: ARIZONA 1

	SEPTEMBER 2008							CHANGE FROM			AUGUST 2008			SEPTEMBER 2007		
	FAMILIES (CASES)	PERSONS (RECIP.)	ADULTS	CHILDREN	TOTAL PAYMENTS	AVERAGE PAYMENT/ CASE	AVERAGE PAYMENT/ RECIP.	FAMILIES (CASES)	PERSONS (RECIP.)	TOTAL PAYMENTS	FAMILIES (CASES)	PERSONS (RECIP.)	TOTAL PAYMENTS			
ARIZONA	1,020	3,809	1,567	2,242	363,459	356.33	95.42	70	285	27,474	332	1,146	112,969			
DISTRICT I																
MARICOPA	549	1,989	748	1,241	193,594	352.63	97.33	53	199	21,107	300	1,019	101,352			
DISTRICT II																
PIMA	168	638	278	360	59,884	356.45	93.86	16	55	4,554	43	161	16,056			
DISTRICT III																
APACHE	6	24	12	12	2,116	352.67	88.17	1	4	384	2	11	821			
COCONINO	7	25	12	13	2,233	319.00	89.32	3	11	1,188	6	21	1,815			
NAVAJO	77	328	145	183	31,518	409.32	96.09	(9)	(27)	(2,146)	11	61	6,842			
YAVAPAI	5	12	3	9	1,176	235.20	98.00	(1)	(7)	(735)	(2)	(15)	(1,258)			
DISTRICT IV																
LA PAZ	5	18	10	8	1,932	386.40	107.33	0	1	187	(4)	(15)	(1,012)			
MOHAVE	54	207	101	106	19,816	366.96	95.73	(2)	(12)	(491)	7	21	2,430			
YUMA	38	145	58	87	13,126	345.42	90.52	8	43	3,005	(15)	(54)	(5,319)			
DISTRICT V																
GILA	3	9	6	3	809	269.67	89.89	(4)	(11)	(1,276)	(36)	(128)	(12,698)			
PINAL	81	327	151	176	29,433	363.37	90.01	10	42	3,804	18	69	5,271			
DISTRICT VI																
COCHISE	15	46	23	23	4,044	269.60	87.91	(4)	(14)	(1,618)	3	1	(759)			
GRAHAM	4	15	8	7	1,218	304.50	81.20	(4)	(12)	(1,588)	(5)	(16)	(1,995)			
GREENLEE	0	0	0	0	0	0.00	0.00	0	0	0	0	0	0			
SANTA CRUZ	8	26	12	14	2,560	320.00	98.46	3	13	1,099	4	10	1,423			

1/EXCLUDES: PRIOR MONTH NET TOTALS OF: 115 CASES; 453 RECIPIENTS; \$40,444.
GRANT DIVERSION TOTALS OF: 0 CASES; \$0.
ZERO PAY TOTALS OF 10 CASES; 51 RECIPIENTS.

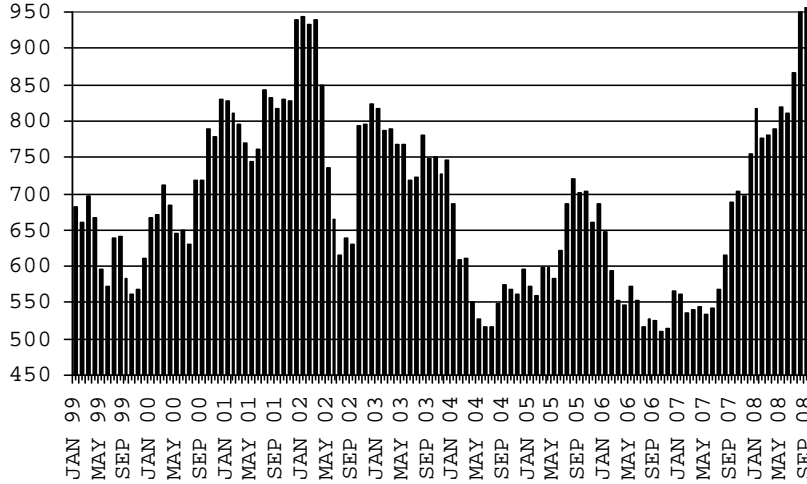
	CURRENT MO. CASES	CURRENT MO. RECIP.	CURRENT MO. DOLLARS	PRIOR MO. CASES	PRIOR MO. RECIP.	PRIOR MO. DOLLARS
PASQUAYUAQUI	15	76	6,657	3	11	473
WM APACHE	50	224	21,357	0	0	0
SALT RIVER	0	0	0	0	0	0
SAN CARLOS	3	10	654	0	0	0
HOPÍ	0	0	0	0	0	0
TOTAL	68	310	28,668	3	11	473

CASES WITH GRANT UNDER \$100 (SEE TABLE 1C).

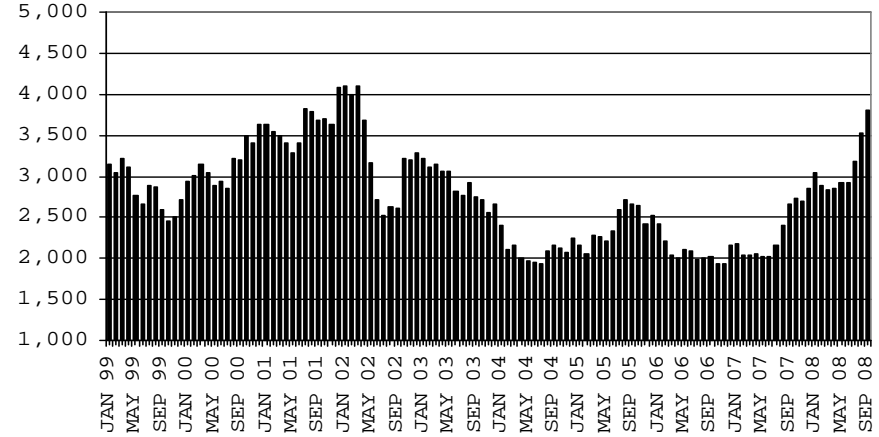
CHART 1A

CASH ASSISTANCE UNEMPLOYED PARENT PROGRAM COMPARISON OF CASES, RECIPIENTS, PAYMENTS & AVERAGE PAYMENTS FOR 1999, 2000, 2001, 2002, 2003, 2004, 2005, 2006 & 2007

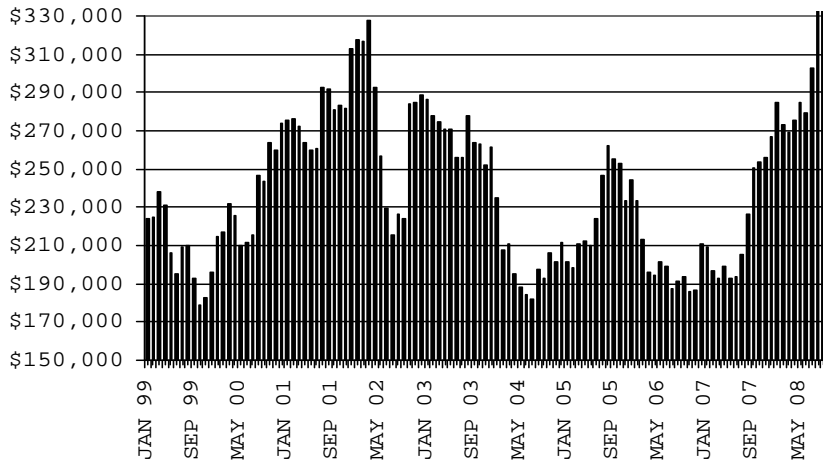
CASES



RECIPIENTS



PAYMENTS



AVERAGE PAYMENTS PER RECIPIENT

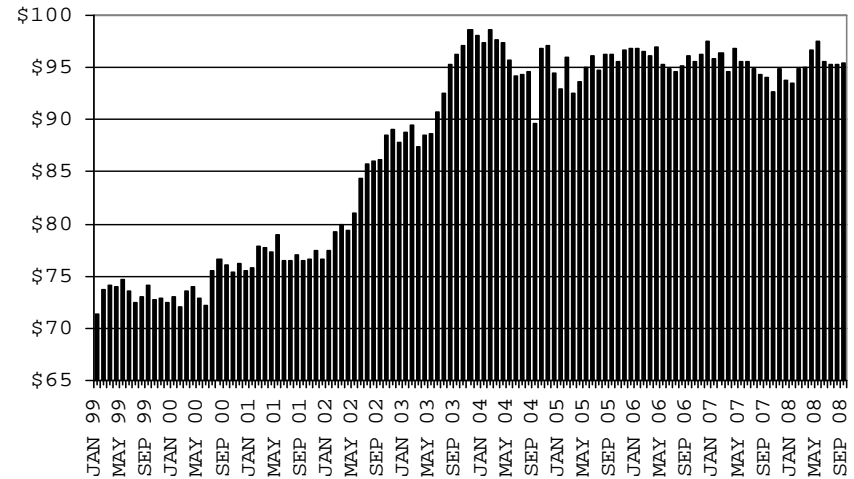


TABLE 1B 1/

CASH ASSISTANCE: ARIZONA
CASES WITH GRANT UNDER \$100

	SEPTEMBER 2008							CHANGE FROM			AUGUST 2008			SEPTEMBER 2007		
	FAMILIES (CASES)	PERSONS (RECIP.)	ADULTS	CHILDREN	TOTAL PAYMENTS	AVERAGE PAYMENT/ CASE	AVERAGE PAYMENT/ RECIP.	FAMILIES (CASES)	PERSONS (RECIP.)	TOTAL PAYMENTS	FAMILIES (CASES)	PERSONS (RECIP.)	TOTAL PAYMENTS	FAMILIES (CASES)	PERSONS (RECIP.)	TOTAL PAYMENTS
	ARIZONA	710	1,445	367	1,078	50,745	71.47	35.12	18	48	235	64	103	2,471		
DISTRICT I																
MARICOPA	422	880	205	675	28,767	68.17	32.69	31	88	1,608	77	135	4,167			
DISTRICT II																
PIMA	115	224	70	154	8,552	74.37	38.18	(24)	(66)	(1,745)	(4)	(12)	(1,299)			
DISTRICT III																
APACHE	2	2	1	1	185	92.50	92.50	(1)	(1)	(220)	(7)	(13)	(300)			
COCONINO	7	15	4	11	538	76.86	35.87	0	0	(65)	(1)	(1)	68			
NAVAJO	10	21	6	15	771	77.10	36.71	1	5	173	1	(2)	4			
YAVAPAI	18	30	5	25	1,433	79.61	47.77	(1)	(7)	462	4	1	697			
DISTRICT IV																
LA PAZ	3	6	2	4	303	101.00	50.50	(2)	(3)	(195)	(3)	(3)	(306)			
MOHAVE	35	71	21	50	2,665	76.14	37.54	8	22	408	(3)	(3)	55			
YUMA	25	51	14	37	2,257	90.28	44.25	5	6	489	(4)	(5)	(142)			
DISTRICT V																
GILA	8	13	6	7	615	76.88	47.31	2	4	209	(1)	(7)	(142)			
PINAL	36	80	19	61	2,684	74.56	33.55	3	1	6	5	7	55			
DISTRICT VI																
COCHISE	20	36	8	28	1,512	75.60	42.00	(2)	2	(543)	7	18	259			
GRAHAM	4	5	1	4	161	40.25	32.20	2	3	(2)	(4)	(7)	(291)			
GREENLEE	1	3	2	1	73	73.00	24.33	1	3	73	0	1	2			
SANTA CRUZ	4	8	3	5	229	57.25	28.63	(5)	(9)	(423)	(3)	(6)	(356)			

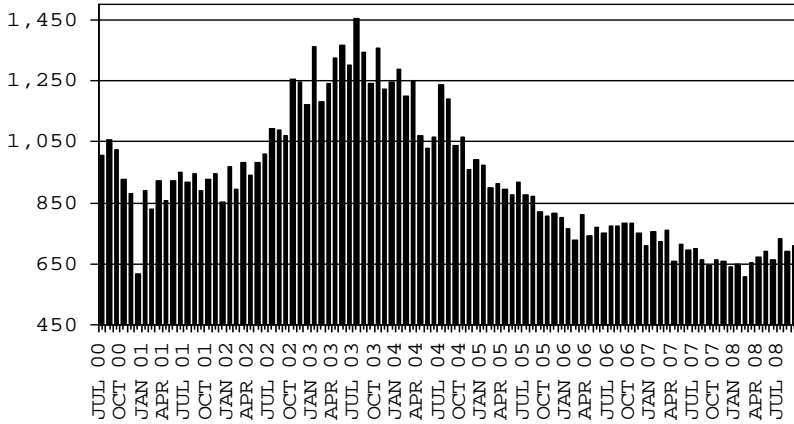
EXCLUDES: PRIOR MONTH NET TOTALS OF 827 CASES; 1,701 RECIPIENTS; \$54,213.

CHART 1B

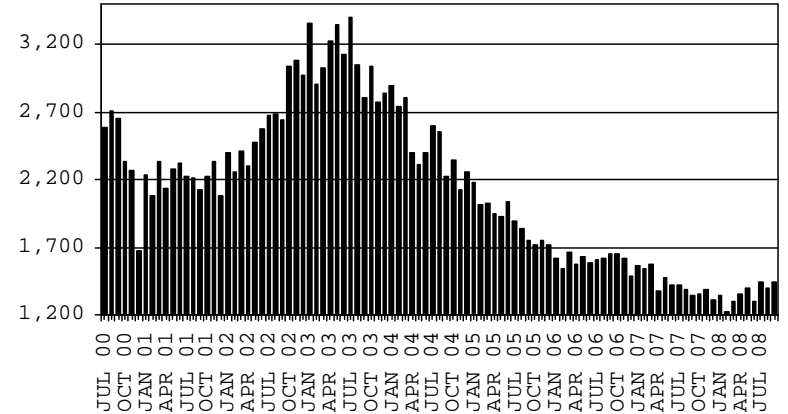
CASH ASSISTANCE PROGRAM CASES WITH GRANT UNDER \$100

COMPARISON OF CASES, RECIPIENTS, PAYMENTS & AVERAGE PAYMENTS FOR 2000, 2001, 2002, 2003, 2004, 2005, 2006 & 2007

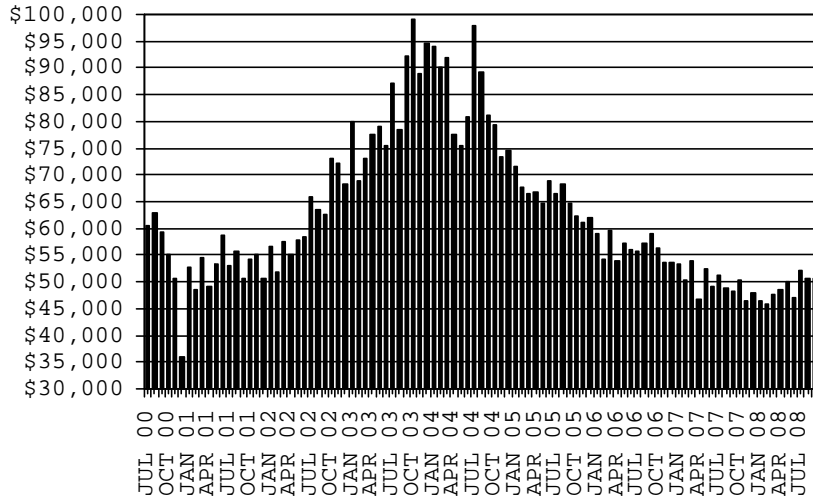
CASES



RECIPIENTS



PAYMENTS



AVERAGE PAYMENTS PER RECIPIENT

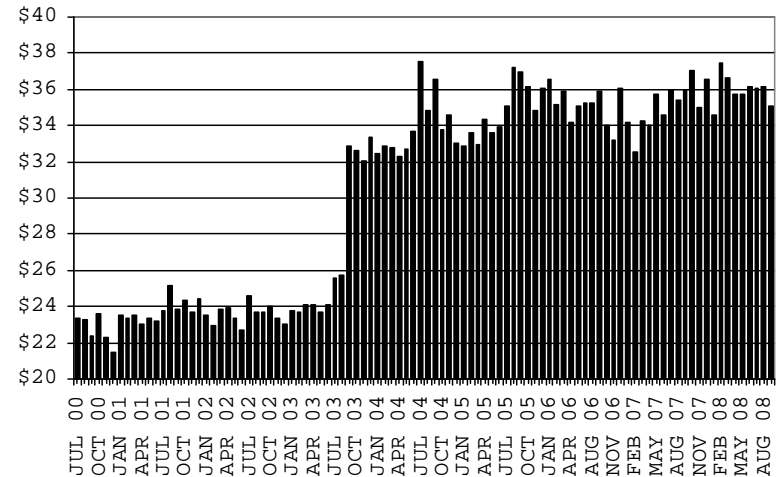


TABLE 1C 1/

CASH ASSISTANCE UNEMPLOYED PARENT PROGRAM: ARIZONA
 CASES WITH GRANT UNDER \$100

	CHANGE FROM												
	SEPTEMBER 2008							AUGUST 2008			SEPTEMBER 2007		
	FAMILIES (CASES)	PERSONS (RECIP.)	ADULTS	CHILDREN	TOTAL PAYMENTS	AVERAGE PAYMENT/ CASE	AVERAGE PAYMENT/ RECIP.	FAMILIES (CASES)	PERSONS (RECIP.)	TOTAL PAYMENTS	FAMILIES (CASES)	PERSONS (RECIP.)	TOTAL PAYMENTS
ARIZONA	24	67	19	48	1,414	58.92	21.10	0	(6)	22	14	38	830
DISTRICT I													
MARICOPA	16	37	6	31	969	60.56	26.19	3	7	168	12	29	671
DISTRICT II													
PIMA	4	16	8	8	169	42.25	10.56	0	4	(26)	2	9	72
DISTRICT III													
APACHE	0	0	0	0	0	0.00	0.00	0	0	0	0	0	0
COCONINO	0	0	0	0	0	0.00	0.00	0	0	0	0	0	0
NAVAJO	0	0	0	0	0	0.00	0.00	0	0	0	0	0	0
YAVAPAI	1	1	0	1	97	97.00	97.00	(1)	(3)	(25)	1	1	97
DISTRICT IV													
LA PAZ	1	5	2	3	24	24.00	4.80	0	0	0	1	5	24
MOHAVE	1	5	2	3	77	77.00	15.40	(2)	(10)	(131)	0	2	17
YUMA	1	3	1	2	78	78.00	26.00	0	(4)	36	(1)	(3)	28
DISTRICT V													
GILA	0	0	0	0	0	0.00	0.00	0	0	0	(1)	(5)	(79)
PINAL	0	0	0	0	0	0.00	0.00	0	0	0	(1)	(5)	(79)
DISTRICT VI													
COCHISE	0	0	0	0	0	0.00	0.00	0	0	0	0	0	0
GRAHAM	0	0	0	0	0	0.00	0.00	0	0	0	0	0	0
GREENLEE	0	0	0	0	0	0.00	0.00	0	0	0	0	0	0
SANTA CRUZ	0	0	0	0	0	0.00	0.00	0	0	0	0	0	0

EXCLUDES: PRIOR MONTH NET TOTALS OF 54 CASES; 187 RECIPIENTS; \$2,866.

CHART 1C

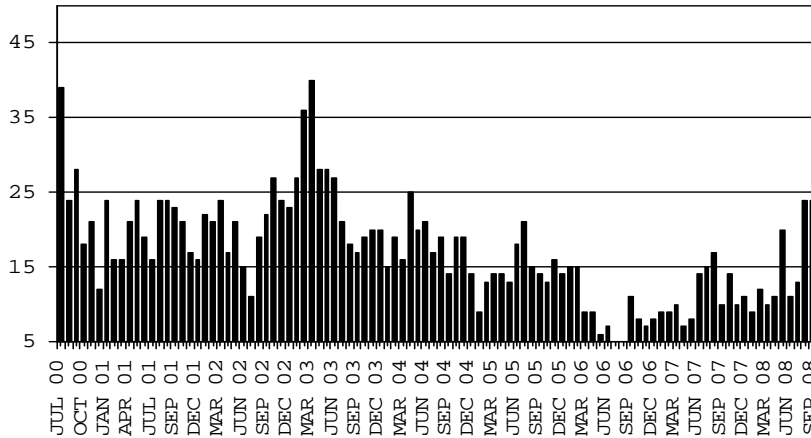
CASH ASSISTANCE UNEMPLOYED PARENT PROGRAM

CASES WITH GRANT UNDER \$100

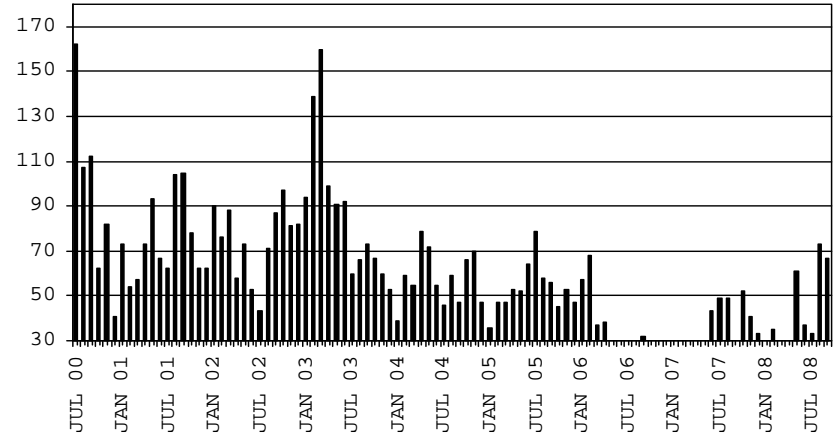
COMPARISON OF CASES, RECIPIENTS, PAYMENTS & AVERAGE PAYMENTS

FOR 2000, 2001, 2002, 2003, 2004, 2005, 2006 & 2007

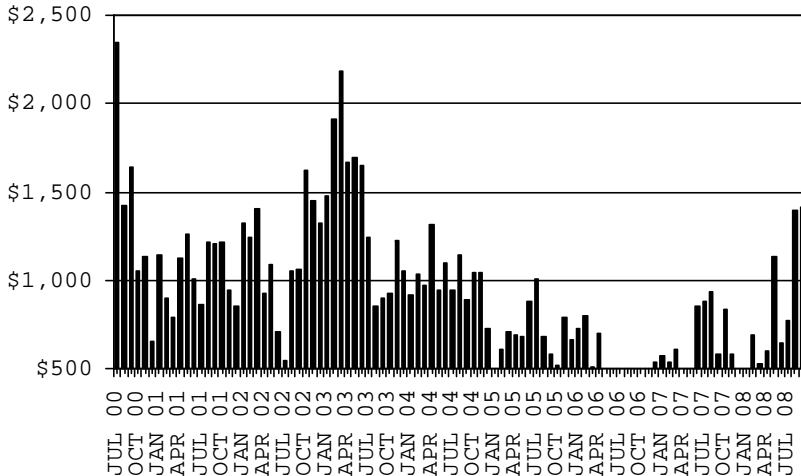
CASES



RECIPIENTS



PAYMENTS



AVERAGE PAYMENTS PER RECIPIENT

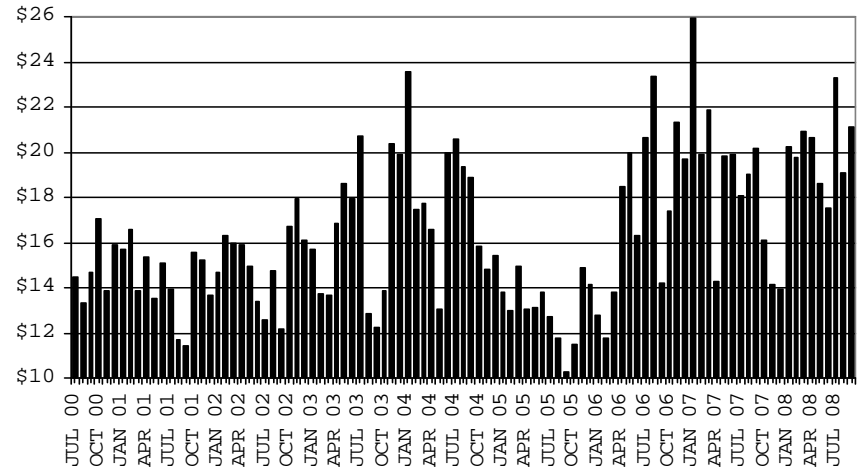


TABLE 2
GENERAL ASSISTANCE: ARIZONA 1,

	CHANGE FROM											
	SEPTEMBER 2008					AUGUST 2008			SEPTEMBER 2007			
	NUMBER OF CASES	PERSONS (RECIP.)	TOTAL PAYMENTS	AVERAGE PAYMENT/ CASE	AVERAGE PAYMENT/ RECIP.	NUMBER OF CASES	PERSONS (RECIP.)	TOTAL PAYMENTS	NUMBER OF CASES	PERSONS (RECIP.)	TOTAL PAYMENTS	
ARIZONA	1,484	1,490	222,081	149.65	149.05	27	27	2,133	164	163	18,837	
DISTRICT I												
MARICOPA	623	624	92,434	148.37	148.13	11	10	370	51	52	4,000	
DISTRICT II												
PIMA	383	386	57,293	149.59	148.43	10	11	942	49	51	7,208	
DISTRICT III												
APACHE	7	7	1,081	154.43	154.43	(2)	(3)	(471)	(3)	(4)	(449)	
COCONINO	24	24	3,437	143.21	143.21	1	1	43	1	0	(14)	
NAVAJO	33	34	4,836	146.55	142.24	(2)	(1)	(374)	0	1	(353)	
YAVAPAI	71	71	10,730	151.13	151.13	6	6	1,207	18	17	2,429	
DISTRICT IV												
LA PAZ	10	10	1,187	118.70	118.70	1	1	57	(1)	(2)	(451)	
MOHAVE	117	118	18,393	157.21	155.87	6	6	934	46	46	7,243	
YUMA	36	36	4,503	125.08	125.08	0	0	(130)	9	9	900	
DISTRICT V												
GILA	108	108	16,316	151.07	151.07	(4)	(4)	(705)	(22)	(23)	(4,379)	
PINAL	12	12	1,621	135.08	135.08	(4)	(4)	(692)	(15)	(15)	(2,533)	
	96	96	14,695	153.07	153.07	0	0	(13)	(7)	(8)	(1,846)	
DISTRICT VI												
COCHISE	72	72	11,871	164.88	164.88	0	0	260	16	16	2,703	
GRAHAM	60	60	9,860	164.33	164.33	3	3	649	14	14	2,357	
GREENLEE	8	8	1,319	164.88	164.88	(2)	(2)	(346)	2	2	346	
SANTA CRUZ	1	1	173	173.00	173.00	0	0	65	0	0	0	
	3	3	519	173.00	173.00	(1)	(1)	(108)	0	0	0	

1/EXCLUDES: PRIOR MONTH NET TOTALS OF : 269 CASES; 271 RECIPIENTS; \$70,563.
REFUGEE RESETTLEMENT PROGRAM: 295 CASES; 398 RECIPIENTS; \$75,451.

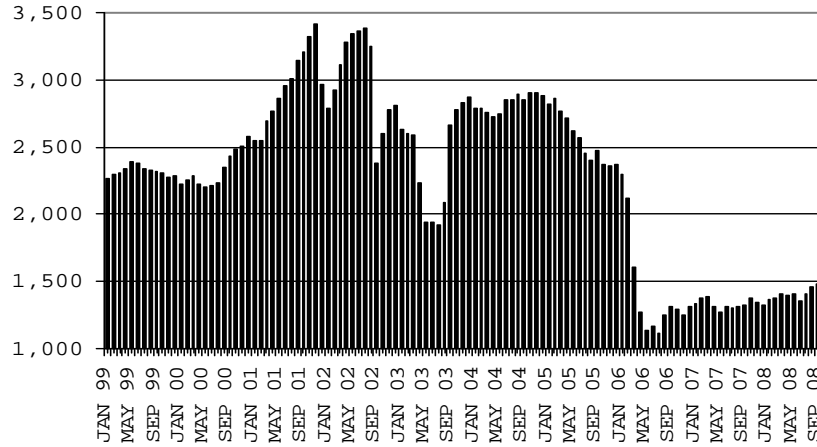
CHART 2

GENERAL ASSISTANCE PROGRAM

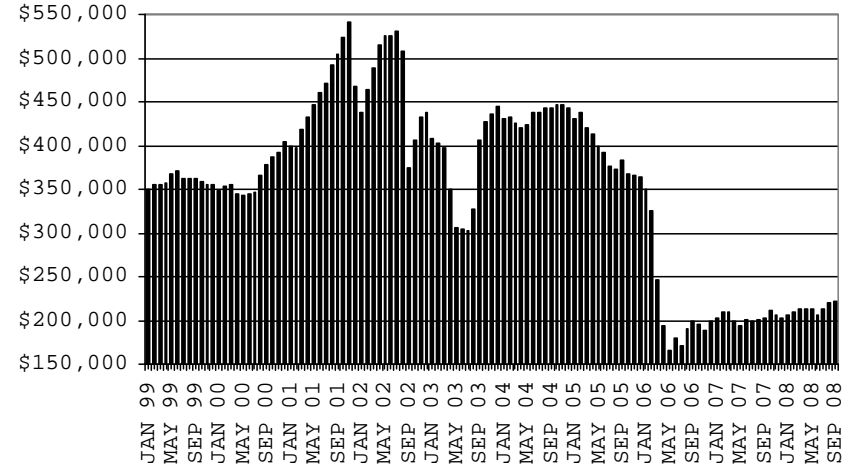
COMPARISON OF CASES, PAYMENTS & AVERAGE PAYMENTS

FOR 1999, 2000, 2001, 2002, 2003, 2004, 2005, 2006 & 2007

CASES



PAYMENTS



AVERAGE PAYMENT PER CASE

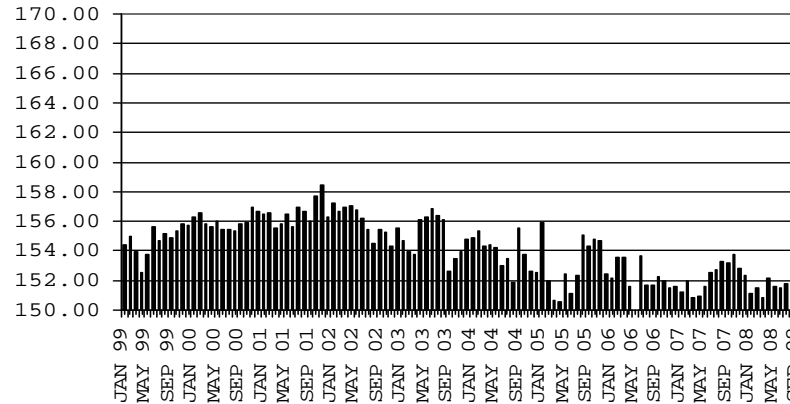


TABLE 4

TUBERCULOSIS CONTROL: ARIZONA 1/

	CHANGE FROM										
	SEPTEMBER 2008			AUGUST 2008			SEPTEMBER 2007				
	NUMBER OF CASES	PERSONS (RECIP.)	TOTAL PAYMENTS	AVERAGE PAYMENT/ CASE	AVERAGE PAYMENT/ RECIP.	NUMBER OF CASES	PERSONS (RECIP.)	TOTAL PAYMENTS	NUMBER OF CASES	PERSONS (RECIP.)	TOTAL PAYMENTS
ARIZONA	7	7	821	117.29	117.29	(1)	(1)	(108)	(4)	(4)	(374)
DISTRICT I											
MARICOPA	7	7	821	117.29	117.29	0	0	0	(4)	(4)	(374)
DISTRICT II											
PIMA	0	0	0	0.00	0.00	0	0	0	0	0	0
DISTRICT III											
APACHE	0	0	0	0.00	0.00	0	0	0	0	0	0
COCONINO	0	0	0	0.00	0.00	0	0	0	0	0	0
NAVAJO	0	0	0	0.00	0.00	0	0	0	0	0	0
YAVAPAI	0	0	0	0.00	0.00	(1)	(1)	(108)	0	0	0
DISTRICT IV											
LA PAZ	0	0	0	0.00	0.00	0	0	0	0	0	0
MOHAVE	0	0	0	0.00	0.00	0	0	0	0	0	0
YUMA	0	0	0	0.00	0.00	0	0	0	0	0	0
DISTRICT V											
GILA	0	0	0	0.00	0.00	0	0	0	0	0	0
PINAL	0	0	0	0.00	0.00	0	0	0	0	0	0
DISTRICT VI											
COCHISE	0	0	0	0.00	0.00	0	0	0	0	0	0
GRAHAM	0	0	0	0.00	0.00	0	0	0	0	0	0
GREENLEE	0	0	0	0.00	0.00	0	0	0	0	0	0
SANTA CRUZ	0	0	0	0.00	0.00	0	0	0	0	0	0

1/EXCLUDES: PRIOR MONTH NET TOTALS OF : 0 CASES; 0 RECIPIENTS; \$0.

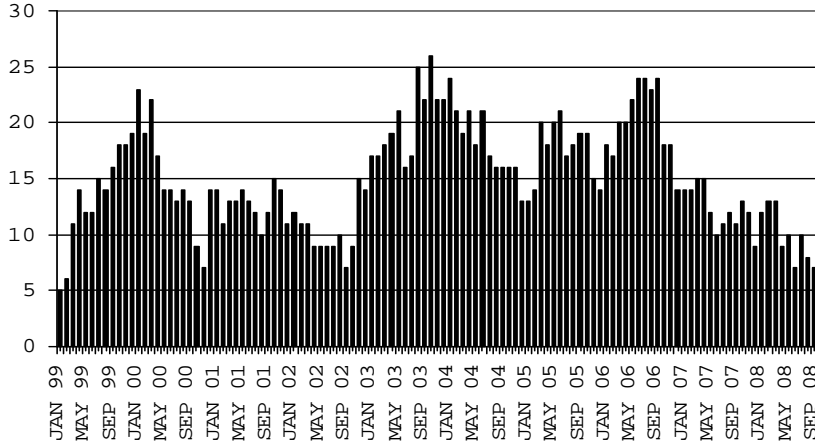
CHART 4

TUBERCULOSIS CONTROL PROGRAM

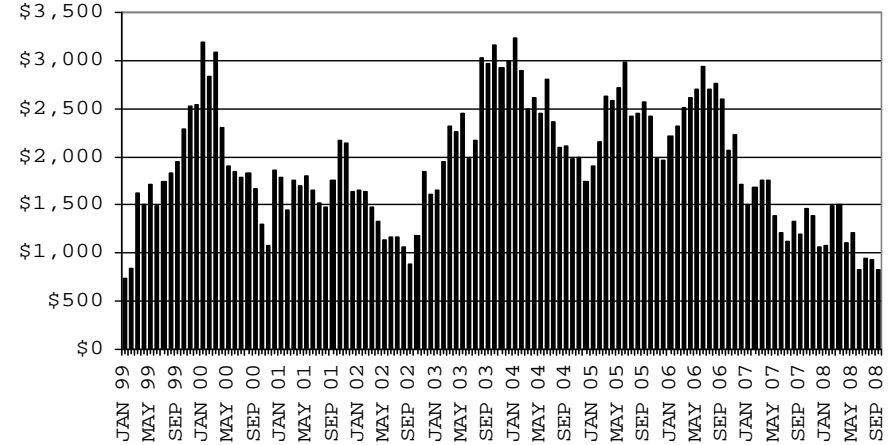
COMPARISON OF CASES, PAYMENTS & AVERAGE PAYMENTS

FOR 1999, 2000, 2001, 2002, 2003, 2004, 2005, 2006 & 2007

CASES



PAYMENTS



AVERAGE PAYMENT PER CASE

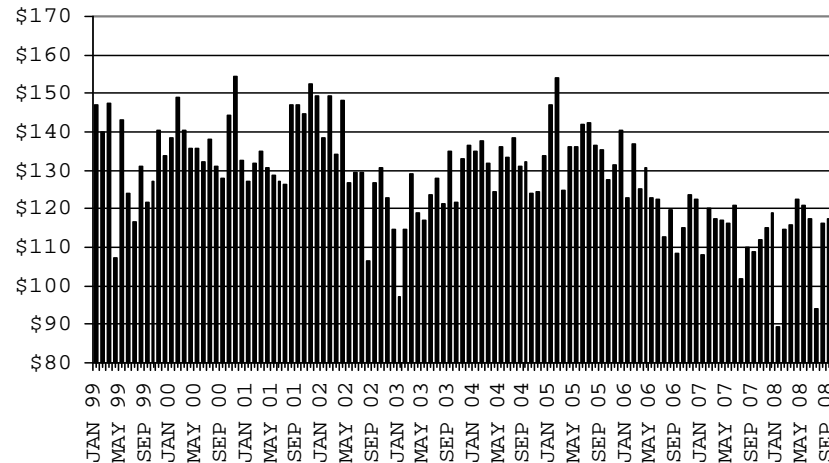


TABLE 6

FOOD STAMP PROGRAM: ARIZONA 1/

	CHANGE FROM										
	SEPTEMBER 2008					AUGUST 2008			SEPTEMBER 2007		
	HOUSEHOLDS	PERSONS	TOTAL COUPON ISSUANCE	AVERAGE ALLOT./ HOUSEHOLD	AVERAGE ALLOT./ PERSON	HOUSEHOLDS	PERSONS	TOTAL COUPON ISSUANCE	HOUSEHOLDS	PERSONS	TOTAL COUPON ISSUANCE
ARIZONA	282,891	685,906	69,063,466	244.13	100.69	4,344	10,242	993,875	47,857	110,637	13,019,343
DISTRICT I											
MARICOPA	144,219	351,842	36,153,725	250.69	102.76	2,602	6,594	670,837	27,928	67,919	7,911,495
DISTRICT II											
PIMA	49,930	113,296	11,439,924	229.12	100.97	475	1,175	133,572	7,997	16,874	2,013,944
DISTRICT III											
APACHE	6,623	19,960	1,951,590	294.67	97.78	(20)	(122)	(20,083)	285	203	131,054
COCONINO	6,097	17,639	1,649,851	270.60	93.53	39	118	1,987	774	1,841	218,910
NAVAJO	10,295	28,623	2,763,181	268.40	96.54	3	(52)	(14,048)	936	2,062	298,274
YAVAPAI	8,157	16,838	1,650,278	202.31	98.01	226	609	65,547	1,791	3,951	431,349
DISTRICT IV											
LA PAZ	1,414	3,036	309,963	219.21	102.10	26	9	(3,005)	148	216	28,875
MOHAVE	13,105	27,138	2,774,698	211.73	102.24	227	306	19,582	2,631	4,828	564,676
YUMA	11,680	31,555	2,884,073	246.92	91.40	275	623	46,370	1,185	2,890	271,228
DISTRICT V											
GILA	3,928	9,048	916,434	233.31	101.29	141	256	25,310	458	885	107,588
PINAL	14,357	36,306	3,653,680	254.49	100.64	149	326	37,132	2,265	5,732	647,488
DISTRICT VI											
COCHISE	7,797	17,211	1,659,201	212.80	96.40	97	131	6,218	1,066	2,166	250,169
GRAHAM	2,048	4,820	469,536	229.27	97.41	(11)	(61)	(7,112)	(2)	9	24,629
GREENLEE	236	477	46,433	196.75	97.34	(1)	3	865	(25)	(75)	(6,964)
SANTA CRUZ	3,005	8,117	740,899	246.56	91.28	116	327	30,703	420	1,136	126,628

1/EXCLUDES: PRIOR MONTH NET TOTALS OF : 8,909 CASES; 24,173 RECIPIENTS; \$1,189,509.
 AGED CANCELATIONS: 0 CASES; 0 RECIPIENTS; 0.
 FS COUPON CONVERSIONS: 0 CASES; 0 RECIPIENTS; \$0.
 FS REINSTATED: 0 CASES; \$0.
 FS ZERO PAY: 8,968 CASES; 36,876 RECIPIENTS.

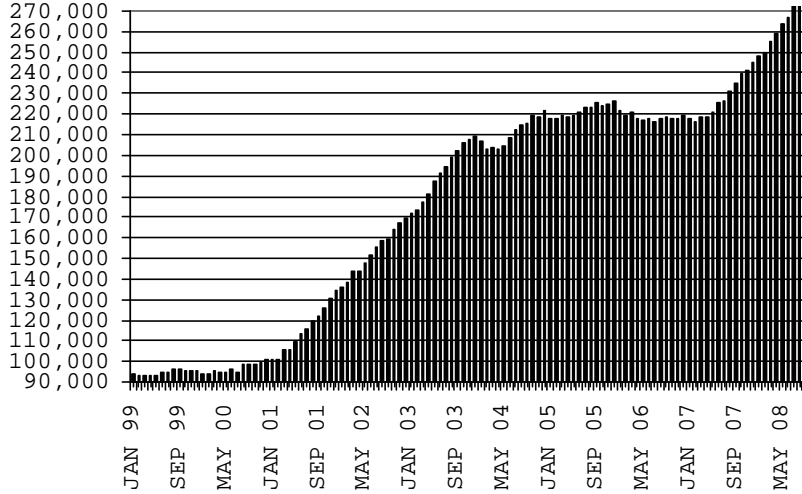
CHART 6

FOOD STAMPS PROGRAM

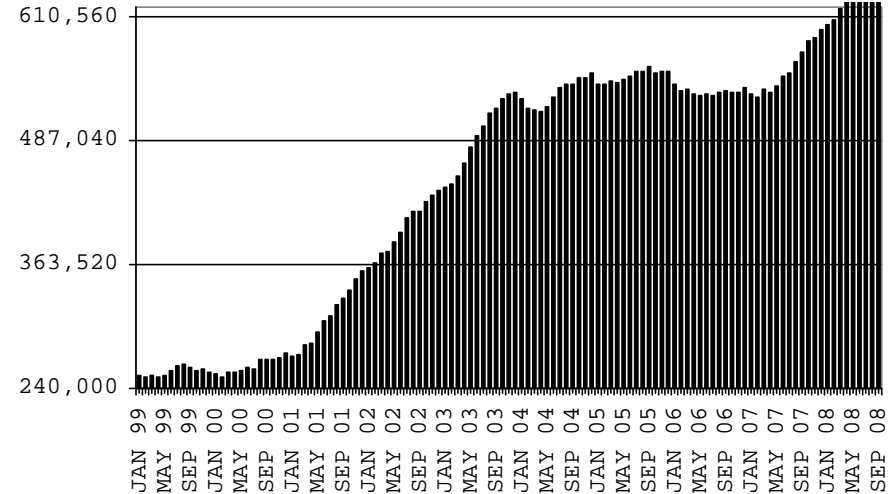
COMPARISON OF HOUSEHOLDS, RECIPIENTS, PAYMENTS & AVERAGE PAYMENTS

FOR 1999, 2000, 2001, 2002, 2003, 2004, 2005, 2006 & 2007

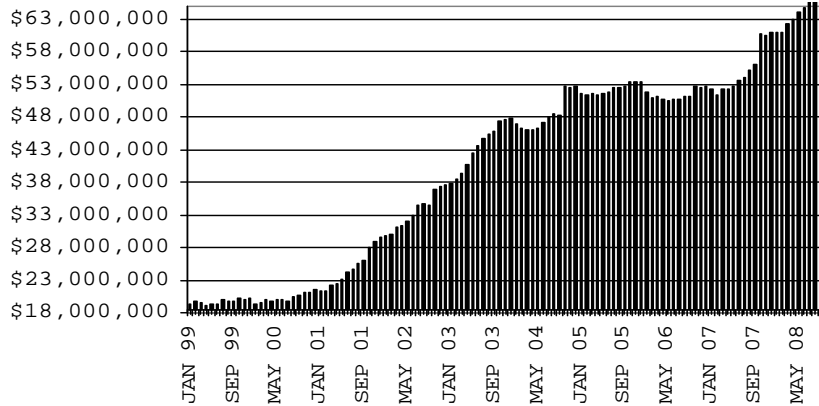
HOUSEHOLDS



RECIPIENTS



TOTAL PAYMENTS



AVERAGE PAYMENT PER HOUSEHOLD

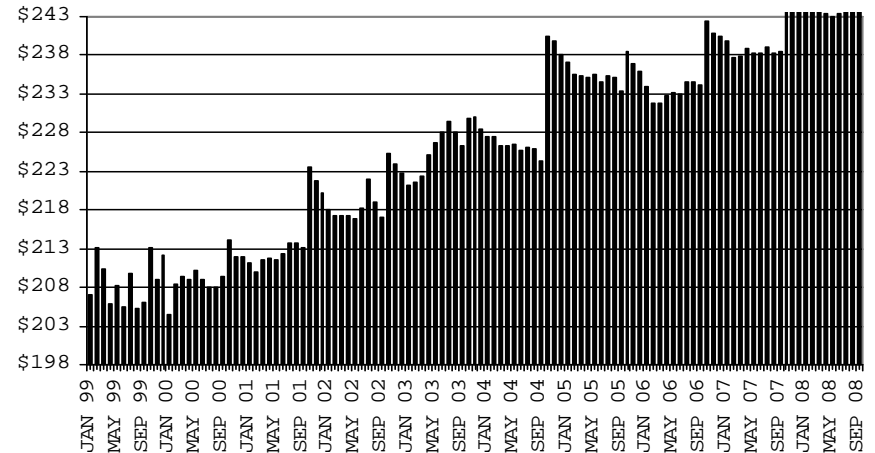


TABLE 7A
MEDICAL ASSISTANCE PROGRAM
RECIPIENTS

SEPTEMBER 2008

	SOBRA WOMAN 133% FPL	SOBRA CHILD	ADULT W/O CHILD 100% FPL	FOSTER CARE	1931 36% FPL	FEDERAL EMERGENCY SERVICES	INFANTS	ADULT W/O CHILD 40% FPL	MEDICAL W/SPEND DOWN	SOBRA WOMAN 100% FPL	SOBRA CHILD 100% FPL	TRANSITIONAL MEDICAL T1 - T4	1931 100% FPL	YATI	OTHER	TOTAL CASES
ARIZONA	11,987	64,024	41,344	10,639	283,857	83,672	50,242	104,170	5,530	3,669	172,863	42,327	83,666	261	24,718	982,969
DISTRICT I																
MARICOPA	6,320	35,850	17,918	5,348	152,034	64,582	30,087	47,990	2,930	1,880	97,556	20,685	39,324	141	12,151	534,796
DISTRICT II																
PIMA	1,881	9,820	8,143	2,999	43,617	10,395	7,015	19,149	812	598	26,377	7,292	14,643	75	4,435	157,251
DISTRICT III																
APACHE	225	1,500	834	41	10,675	87	983	4,227	80	92	3,676	1,058	2,259	3	400	26,140
COCONINO	369	1,417	1,176	122	7,316	536	1,143	3,195	115	91	3,915	1,240	2,292	4	378	23,309
NAVAJO	349	2,178	1,319	137	11,546	293	1,443	5,036	151	129	4,566	1,539	2,949	3	595	32,233
YAVAPAI	406	1,783	1,869	461	5,935	1,437	1,292	3,220	260	98	4,341	1,398	2,726	14	1,052	26,292
DISTRICT IV																
LA PAZ	44	228	218	12	1,199	176	183	609	28	27	660	151	346	0	148	4,029
MOHAVE	487	2,107	2,141	263	10,076	878	1,602	5,351	347	159	6,605	2,007	3,949	2	1,332	37,306
YUMA	616	2,505	2,614	266	10,815	2,150	1,937	3,562	232	216	8,846	2,100	5,597	2	1,377	42,835
DISTRICT V																
GILA	143	723	610	73	4,030	163	482	2,112	85	40	1,613	500	986	2	315	11,877
PINAL	635	3,635	1,946	538	14,868	1,725	2,241	5,498	283	179	7,434	2,160	4,001	10	1,190	46,343
DISTRICT VI																
COCHISE	246	1,141	1,382	265	6,409	639	898	2,491	111	77	3,575	1,100	2,277	4	761	21,376
GRAHAM	142	469	388	77	2,128	58	411	910	35	26	992	502	684	1	159	6,982
GREENLEE	16	33	39	8	260	5	61	105	8	6	102	54	54	0	26	777
SANTA CRUZ	108	635	747	29	2,949	548	464	715	53	51	2,605	541	1,579	0	399	11,423

TABLE 7B

MEDICAL ASSISTANCE PROGRAM

RECIPIENTS

CHANGE FROM

AUGUST 2008

	SOBRA WOMAN 133% FPL	SOBRA CHILD	ADULT W/O CHILD 100% FPL	FOSTER CARE	1931 36% FPL	FEDERAL EMERGENCY SERVICES	INFANTS	ADULT W/O CHILD 40% FPL	MEDICAL W/SPEND DOWN	SOBRA WOMAN 100% FPL	SOBRA CHILD 100% FPL	TRANSITIONAL MEDICAL T1 - T4	1931 100% FPL	YATI	OTHER	TOTAL CASES
ARIZONA	108	368	890	95	4,156	290	(169)	2,035	389	130	2,677	1,160	1,641	(5)	509	14,274
DISTRICT I																
MARICOPA	36	119	332	79	3,127	127	(134)	1,342	187	54	1,539	575	828	(2)	202	8,411
DISTRICT II																
PIMA	34	54	167	(14)	428	13	(47)	183	62	1	214	177	80	0	103	1,455
DISTRICT III																
APACHE	0	(10)	11	(1)	(129)	(3)	(15)	(14)	19	21	92	42	62	1	9	85
COCONINO	7	3	4	4	(68)	5	(23)	63	23	5	147	13	48	1	9	241
NAVAJO	5	17	(4)	4	164	4	(2)	4	17	4	(64)	135	8	(1)	5	296
YAVAPAI	3	35	37	(2)	147	(19)	(26)	103	37	9	170	45	57	(1)	17	612
DISTRICT IV																
LA PAZ	(1)	0	14	(1)	(7)	8	3	12	(2)	5	38	(20)	28	0	9	86
MOHAVE	(16)	12	72	1	77	11	(2)	60	5	7	91	(10)	59	(1)	16	382
YUMA	21	41	86	2	36	72	10	107	(5)	18	178	(3)	226	(1)	50	838
DISTRICT V																
GILA	7	47	90	14	268	42	41	144	12	18	168	104	70	0	52	1,077
PINAL	5	18	32	(3)	(19)	9	8	54	7	7	(19)	(7)	20	1	19	132
	2	29	58	17	287	33	33	90	5	11	187	111	50	(1)	33	945
DISTRICT VI																
COCHISE	12	50	81	9	113	30	26	31	34	(12)	104	102	175	(1)	37	791
GRAHAM	4	9	21	4	94	24	3	43	11	(7)	34	46	38	(1)	29	352
GREENLEE	3	(2)	8	8	28	(5)	11	(11)	8	(3)	(38)	81	22	0	4	114
SANTA CRUZ	3	1	4	(1)	(26)	0	(1)	(5)	1	0	(12)	14	(3)	0	5	(20)
	2	42	48	(2)	17	11	13	4	14	(2)	120	(39)	118	0	(1)	345

TABLE 7C

MEDICAL ASSISTANCE PROGRAM

RECIPIENTS

CHANGE FROM

SEPTEMBER 2007

	SOBRA WOMAN 133% FPL	SOBRA CHILD	ADULT W/O CHILD 100% FPL	FOSTER CARE	1931 36% FPL	FEDERAL EMERGENCY SERVICES	INFANTS	ADULT W/O CHILD 40% FPL	MEDICAL W/SPEND DOWN	SOBRA WOMAN 100% FPL	SOBRA CHILD 100% FPL	TRANSITIONAL MEDICAL T1 - T4	3E 1931 100% FPL	YATI	OTHER	TOTAL CASES
ARIZONA	224	1,967	3,936	1,264	25,605	(3,002)	(841)	18,112	78	141	13,800	64	7,825	27	2,948	72,148
DISTRICT I																
MARICOPA	291	1,595	2,080	674	19,114	(1,984)	(683)	10,821	(55)	103	9,933	(403)	4,512	25	1,419	47,442
DISTRICT II																
PIMA	59	241	801	365	2,780	(507)	(95)	3,264	52	53	1,288	230	1,058	3	596	10,188
DISTRICT III	(136)	160	231	81	1,699	(102)	(113)	1,446	(2)	(35)	775	9	718	(5)	343	5,069
APACHE	(38)	112	(40)	(1)	155	(1)	14	74	17	(9)	(154)	(117)	(88)	3	57	(16)
COCONINO	(18)	5	35	(1)	411	31	(32)	401	31	(12)	408	(44)	228	(9)	31	1,465
NAVAJO	(27)	51	24	21	469	(25)	60	438	(3)	(4)	137	132	179	0	86	1,538
YAVAPAI	(53)	(8)	212	62	664	(107)	(155)	533	(47)	(10)	384	38	399	1	169	2,082
DISTRICT IV	(2)	(132)	460	35	649	(275)	(43)	1,348	82	22	907	315	836	1	410	4,613
LA PAZ	3	20	31	(3)	(20)	(14)	0	49	8	4	61	(21)	24	0	16	158
MOHAVE	1	(27)	206	27	1,023	(82)	(15)	1,036	32	(1)	377	231	465	0	158	3,431
YUMA	(6)	(125)	223	11	(354)	(179)	(28)	263	42	19	469	105	347	1	236	1,024
DISTRICT V	16	22	241	85	923	(24)	(1)	904	13	7	829	95	512	4	80	3,706
GILA	16	(39)	125	(5)	(2)	11	1	240	(20)	3	145	16	46	2	42	581
PINAL	0	61	116	90	925	(35)	(2)	664	33	4	684	79	466	2	38	3,125
DISTRICT VI	(4)	81	123	24	440	(110)	94	329	(12)	(9)	68	(182)	189	(1)	100	1,130
COCHISE	(13)	32	67	10	252	(58)	37	250	(14)	(8)	26	(80)	98	(1)	41	639
GRAHAM	12	35	11	17	39	(5)	51	64	7	(9)	(67)	(50)	47	0	25	177
GREENLEE	(14)	(4)	(8)	(2)	(58)	(2)	(2)	(2)	0	5	(18)	(16)	(16)	0	1	(136)
SANTA CRUZ	11	18	53	(1)	207	(45)	8	17	(5)	3	127	(36)	60	0	33	450

CHART 7

MEDICAL ASSISTANCE PROGRAM COMPARISON OF RECIPIENTS FOR 1999, 2000, 2001, 2002, 2003, 2004, 2005, 2006 & 2007

TOTAL RECIPIENTS

