



DEPARTMENT OF ECONOMIC SECURITY

Your Partner For A Stronger Arizona

State of Arizona

Department of Economic Security

Family Assistance Administration

Statistical Bulletin

December, 2008

Phone: (602) 542-3678

<http://www.azdes.gov/faa/Statistics.asp>

**** STATISTICAL BULLETIN ****
ARIZONA DEPARTMENT OF ECONOMIC SECURITY
FAMILY ASSISTANCE ADMINISTRATION
BOX 6123, PHOENIX, ARIZONA 85005
PHONE (602) 542-3678

DECEMBER 2008

THIS ISSUE OF THE STATISTICAL BULLETIN COMPARES DECEMBER 2008 DATA FOR EACH OF THE INDICATED PROGRAMS WITH THE INFORMATION FOR NOVEMBER 2008 AND DECEMBER 2007. STATEWIDE SUMMARIES OF ACTIVITY WITHIN EACH OF THE SPECIFIC PROGRAMS FOR THIS REPORT PERIOD ARE DISCUSSED BELOW. THE TABLES COMPARE CURRENT AND PRIOR MONTH DATA. DISTRICT AND COUNTY COMPARISONS ARE PROVIDED WITHIN THIS BULLETIN

CASH ASSISTANCE (CA)

COMPARING TO NOVEMBER 2008, DECEMBER 2008 CASES INCREASED BY 740 (2.03%) TO 37,246. RECIPIENTS INCREASED BY 1,824 (2.34%) TO 79,622. PAYMENTS INCREASED BY \$209,572 (2.17%) TO \$9,881,172. AVERAGE PAYMENT PER CASE INCREASED BY \$0.36 (0.14%) TO \$265.29. PAYMENT PER RECIPIENT DECREASED BY \$0.22 (0.18%) TO \$124.10.

COMPARING TO DECEMBER 2007, DECEMBER 2008 CASES INCREASED BY 764 (2.09%). RECIPIENTS INCREASED BY 1,403 (1.79%). TOTAL PAYMENTS INCREASED BY \$153,853 (1.58%). THE AVERAGE PAYMENT PER CASE DECREASED BY \$1.34 (0.50%). THE AVERAGE PAYMENT PER RECIPIENT DECREASED BY \$0.26 (0.21%).

CASH ASSISTANCE UNEMPLOYED PARENT PROGRAM (CA-UP)

COMPARING TO NOVEMBER 2008, DECEMBER 2008 CASES INCREASED BY 164 (13.06%) TO 1,420. RECIPIENTS INCREASED BY 579 (12.37%) TO 5,258. PAYMENTS INCREASED BY \$61,038 (13.41%) TO \$516,106. AVERAGE PAYMENT PER CASE INCREASED BY \$1.13 (0.31%) TO \$363.45. PAYMENT PER RECIPIENT INCREASED BY \$0.90 (0.93%) TO \$98.16.

COMPARING TO DECEMBER 2007, DECEMBER 2008 CASES INCREASED BY 666 (88.33%). RECIPIENTS INCREASED BY 2,407 (84.43%). TOTAL PAYMENTS INCREASED BY \$248,898 (93.15%). THE AVERAGE PAYMENT PER CASE INCREASED BY \$9.07 (2.56%). THE AVERAGE PAYMENT PER RECIPIENT INCREASED BY \$4.44 (4.73%).

CASH ASSISTANCE WITH GRANT UNDER \$100 (CA-MOE)

COMPARING TO NOVEMBER 2008, DECEMBER 2008 CASES INCREASED BY 37 (5.56%) TO 703. RECIPIENTS INCREASED BY 77 (5.59%) TO 1,454. PAYMENTS INCREASED BY \$3,457 (7.37%) TO \$50,339. AVERAGE PAYMENT PER CASE INCREASED BY \$1.22 (1.73%) TO \$71.61. AVERAGE PAYMENT PER RECIPIENT INCREASED BY \$0.57 (1.67%) TO \$34.62.

COMPARING TO DECEMBER 2007, DECEMBER 2008 CASES INCREASED BY 63 (9.84%). RECIPIENTS INCREASED BY 141 (10.74%). TOTAL PAYMENTS INCREASED BY \$2,366 (4.93%). THE AVERAGE PAYMENT PER CASE DECREASED BY \$3.35 (4.47%). THE AVERAGE PAYMENT PER RECIPIENT DECREASED BY \$1.92 (5.25%).

CASH ASSISTANCE UNEMPLOYED PARENT PROGRAM WITH GRANT UNDER \$100 (CA-UP-MOE) NEW PROGRAM STARTING 7/01

COMPARING TO NOVEMBER 2008, DECEMBER 2008 CASES INCREASED BY 5 (23.81%) TO 26. RECIPIENTS INCREASED BY 14 (20.90%) TO 81. PAYMENTS INCREASED BY \$68 (4.97%) TO \$1,436. AVERAGE PAYMENT PER CASE DECREASED BY \$9.91 (15.21%) TO \$55.23. PAYMENT PER RECIPIENT DECREASED BY \$2.69 (13.17%) TO \$17.73.

COMPARING TO DECEMBER 2007, DECEMBER 2008 CASES INCREASED BY 15 (136.36%). RECIPIENTS INCREASED BY 48 (3.51%). TOTAL PAYMENTS INCREASED BY \$977 (212.85%). THE AVERAGE PAYMENT PER CASE INCREASED BY \$13.50 (32.35%). THE AVERAGE PAYMENT PER RECIPIENT INCREASED BY \$3.82 (27.46%).

GENERAL ASSISTANCE (GA)

COMPARING TO NOVEMBER 2008, DECEMBER 2008 CASES INCREASED BY 32 (2.01%) TO 1,621. RECIPIENTS INCREASED BY 32 (2.00%) TO 1,629. PAYMENTS INCREASED BY \$4,975 (2.10%) TO \$241,473. AVERAGE PAYMENT PER CASE INCREASED BY \$0.14 (0.09%) TO \$148.97. AVERAGE PAYMENT PER RECIPIENT INCREASED BY \$0.14 (0.09%) TO \$148.23.

COMPARING TO DECEMBER 2007, DECEMBER 2008 CASES INCREASED BY 296 (22.34%). RECIPIENTS INCREASED BY 299 (22.48%). TOTAL PAYMENTS INCREASED BY \$39,592 (19.61%). THE AVERAGE PAYMENT PER CASE DECREASED BY \$3.39 (2.23%). THE AVERAGE PAYMENT PER RECIPIENT DECREASED BY \$3.56 (2.35%).

TUBERCULOSIS CONTROL PROGRAM (TC)

COMPARING TO NOVEMBER 2008, DECEMBER 2008 CASES DECREASED BY 2 (28.57%) TO 5. RECIPIENTS DECREASED BY 2 (28.57%) TO 5. PAYMENTS DECREASED BY \$83 (11.02%) TO \$670. AVERAGE PAYMENT PER CASE INCREASED BY \$26.43 (24.57%) TO \$134.00. AVERAGE PAYMENT PER RECIPIENT INCREASED BY \$26.43 (24.57%) TO \$134.00.

COMPARING TO DECEMBER 2007, DECEMBER 2008 CASES DECREASED BY 4 (44.44%). RECIPIENTS DECREASED BY 4 (44.44%). TOTAL PAYMENTS DECREASED BY \$395 (37.09%). THE AVERAGE PAYMENT PER CASE INCREASED BY \$15.67 (13.24%). THE AVERAGE PAYMENT PER RECIPIENT INCREASED BY \$15.67 (13.24%).

SUPPLEMENTAL NUTRITION ASSISTANCE PROGRAM (SNAP)

COMPARING TO NOVEMBER 2008, DECEMBER 2008 SUPPLEMENTAL NUTRITION ASSISTANCE HOUSEHOLDS INCREASED BY 10,761 (3.62%) TO 308,274. PERSONS RECEIVING SUPPLEMENTAL NUTRITION ASSISTANCE INCREASED BY 21,618 (3.00%) TO 742,936. TOTAL COUPON ISSUANCE INCREASED BY \$2,510,962 (3.11%) TO \$83,352,327. THE AVERAGE HOUSEHOLD ALLOTMENT DECREASED BY \$1.34 (0.49%) TO \$270.38. THE AVERAGE ALLOTMENT PER PERSON INCREASED BY \$0.12 (0.10%) TO \$112.19.

COMPARING TO DECEMBER 2007, DECEMBER 2008 SUPPLEMENTAL NUTRITION ASSISTANCE HOUSEHOLDS INCREASED BY 63,049 (25.71%). PERSONS RECEIVING SUPPLEMENTAL NUTRITION ASSISTANCE INCREASED BY 145,007 (24.25%). TOTAL COUPON ISSUANCE INCREASED BY \$22,348,982 (36.64%). THE AVERAGE ALLOTMENT PER HOUSEHOLD INCREASED BY \$21.62 (8.69%). THE AVERAGE ALLOTMENT PER PERSON INCREASED BY \$10.17 (9.96%).

MEDICAL ASSISTANCE PROGRAM (MA) NEW TABLE INCLUDES PROP. 204 CATEGORIES

COMPARING TO NOVEMBER 2008, DECEMBER 2008 TOTAL RECIPIENTS TOTAL RECIPIENTS INCREASED BY 5,487 (0.55%). SOBRA WOMEN AT 140% FPL DECREASED BY 327 (2.80%). SOBRA CHILDREN DECREASED BY 230 (0.35%). ADULTS W/O CHILD AT 100% DECREASED BY 203 (0.49%). FOSTER CARE INCREASED BY 24 (0.22%). 1931 AT 36% FPL INCREASED BY 3,040 (1.04%). EMERGENCY SERVICES INCREASED BY 440 (0.53%). INFANTS DECREASED BY 20 (0.04%). ADULT W/O CHILD AT 140% INCREASED BY 480 (0.45%). MEDICAL W/SPEND DOWN DECREASED BY 259 (4.44%). SOBRA WOMAN AT 100% DECREASED BY 98 (2.72%). SOBRA CHILD AT 100% INCREASED BY 1,364 (0.77%). TRANSITIONAL MEDICAL DECREASED BY 30 (0.07%). 1931 AT 100% INCREASED BY 1,052 (1.23%). YATI INCREASED BY 2 (0.75%). ALL OTHER CATEGORIES INCREASED BY 252 (1.00%).

COMPARING TO DECEMBER 2007, DECEMBER 2008 TOTAL RECIPIENTS TOTAL RECIPIENTS INCREASED BY 85,706 (9.32%). SOBRA WOMEN AT 140% FPL DECREASED BY 38 (0.33%). SOBRA CHILDREN INCREASED BY 2,508 (4.04%). ADULTS W/O CHILD AT 100% INCREASED BY 3,617 (9.53%). FOSTER CARE INCREASED BY 1,259 (12.97%). 1931 AT 36% FPL INCREASED BY 34,463 (13.26%). EMERGENCY SERVICES DECREASED BY 1,170 (1.37%). INFANTS DECREASED BY 1,496 (2.96%). ADULT W/O CHILD AT 140% INCREASED BY 15,834 (17.56%). MEDICAL W/SPEND DOWN INCREASED BY 311 (5.91%). SOBRA WOMAN AT 100% INCREASED BY 227 (6.92%). SOBRA CHILD AT 100% INCREASED BY 17,159 (10.67%). TRANSITIONAL MEDICAL INCREASED BY 80 (0.18%). 1931 AT 100% INCREASED BY 9,877 (12.87%). YATI INCREASED BY 33 (14.04%). ALL OTHER CATEGORIES INCREASED BY 3,042 (13.54%).

TANF SUMMARY

TABLES 1, 1A, 1B, & 1C: ARIZONA 1

	DECEMBER 2008							NOVEMBER 2008			CHANGE FROM DECEMBER 2007		
	FAMILIES (CASES)	PERSONS (RECIP.)	ADULTS	CHILDREN	TOTAL PAYMENTS	AVERAGE	AVERAGE	FAMILIES (CASES)	PERSONS (RECIP.)	TOTAL PAYMENTS	FAMILIES (CASES)	PERSONS (RECIP.)	TOTAL PAYMENTS
						PAYMENT/ CASE	PAYMENT/ RECIP.						
ARIZONA	39,395	86,415	21,679	64,736	10,449,053	265.24	120.92	946	2,494	274,135	1,508	3,999	406,094
DISTRICT I													
MARICOPA	22,890	50,960	12,052	38,908	6,123,062	267.50	120.15	765	1,939	213,542	2,038	5,083	557,845
DISTRICT II													
PIMA	6,973	14,603	3,876	10,727	1,825,882	261.85	125.03	71	232	27,864	(158)	(387)	(46,909)
DISTRICT III													
APACHE	76	166	47	119	19,974	262.82	120.33	0	0	63	(53)	(112)	(13,457)
COCONINO	255	549	135	414	62,204	243.94	113.30	12	44	3,845	(15)	(31)	(3,779)
NAVAJO	1,369	3,377	996	2,381	383,384	280.05	113.53	38	114	13,113	(35)	(100)	(5,543)
YAVAPAI	735	1,451	329	1,122	182,029	247.66	125.45	28	54	4,034	58	140	14,110
DISTRICT IV													
LA PAZ	205	439	139	300	52,659	256.87	119.95	(10)	(24)	(2,086)	(43)	(89)	(8,543)
MOHAVE	1,389	2,999	889	2,110	361,489	260.25	120.54	12	45	4,279	(40)	7	(9,754)
YUMA	1,131	2,513	576	1,937	298,054	263.53	118.60	(12)	(40)	(3,967)	(119)	(267)	(35,620)
DISTRICT V													
GILA	747	1,578	563	1,015	194,818	260.80	123.46	7	35	4,193	(47)	(127)	(16,097)
PINAL	1,956	4,339	1,152	3,187	510,570	261.03	117.67	15	35	644	(26)	(120)	(20,013)
DISTRICT VI													
COCHISE	980	1,994	527	1,467	256,648	261.89	128.71	(16)	(3)	104	(34)	(16)	(4,684)
GRAHAM	348	697	216	481	86,911	249.74	124.69	33	69	8,509	(35)	(37)	(6,510)
GREENLEE	36	68	17	51	8,972	249.22	131.94	8	16	2,118	(16)	(46)	(4,477)
SANTA CRUZ	305	682	165	517	82,397	270.15	120.82	(5)	(22)	(2,120)	33	101	9,525

1/EXCLUDES: PRIOR MONTH NET TOTALS OF 2,347 CASES; 5,820 RECIPIENTS; \$512,578.
 1/GRANT DIVERSION TOTALS OF: 248 CASES;\$266,101.
 ZERO PAY TOTALS OF 683 CASES; 2,155 RECIPIENTS.

	CURRENT MO. CASES	CURRENT MO. RECIP.	CURRENT MO. DOLLARS	PRIOR MO. CASES	PRIOR MO. RECIP	PRIOR MO. DOLLARS
PASQUA/YAQUI	328	961	\$100,851	30	106	8,701
WM APACHE	713	1,937	\$217,104	14	50	2,935
SALT RIVER	84	294	\$27,144	1	4	691
SAN CARLOS	701	1,496	\$183,975	9	21	2,306
HOPAI	134	370	\$31,265	8	31	1,033
TOTAL	1,960	5,058	\$560,339	62	212	\$15,666

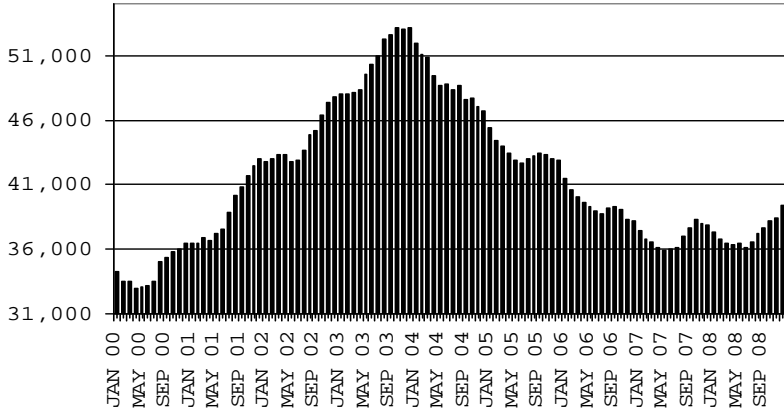
TANF SUMMARY

TABLES 1, 1A, 1B, & 1C

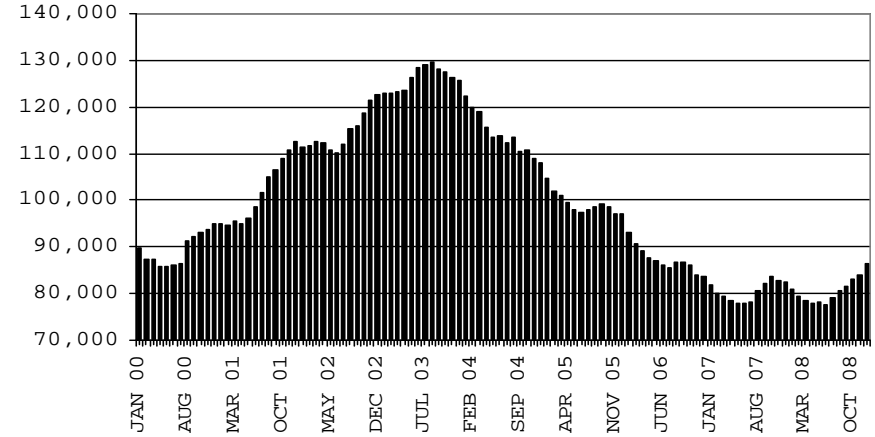
COMPARISON OF CASES, RECIPIENTS, PAYMENTS & AVERAGE PAYMENTS

FOR 2000, 2001, 2002, 2003, 2004, 2005, 2006, & 2007

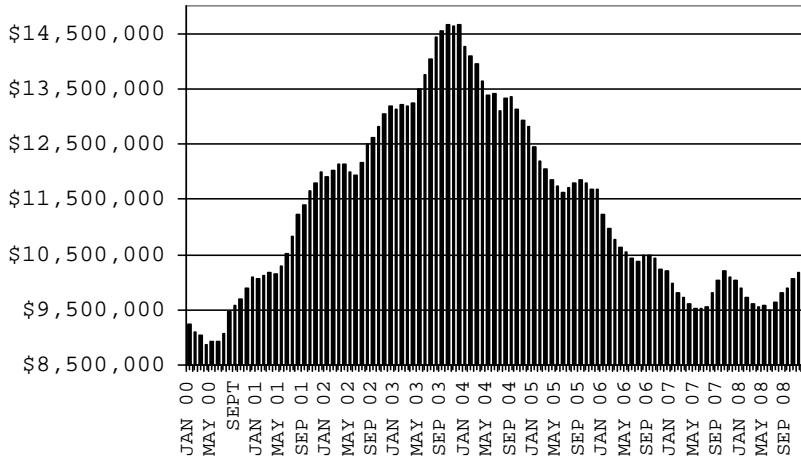
CASES



RECIPIENTS



PAYMENTS



AVERAGE PAYMENTS PER RECIPIENT

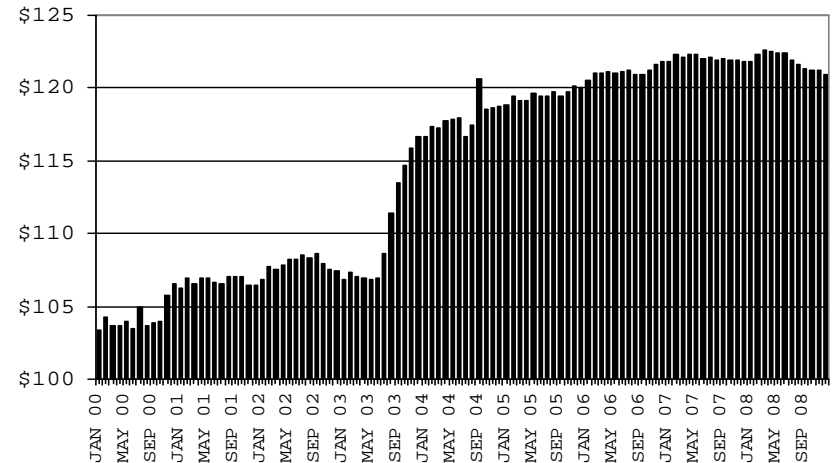


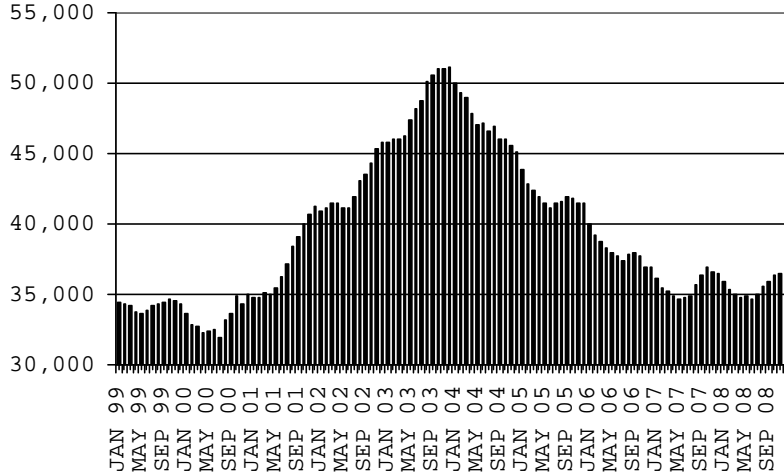
CHART 1

CASH ASSISTANCE PROGRAM

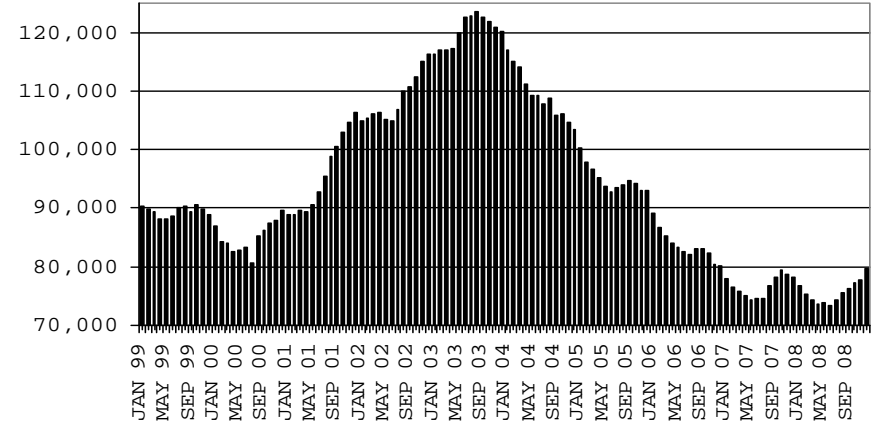
COMPARISON OF CASES, RECIPIENTS, PAYMENTS & AVERAGE PAYMENTS

FOR 1999, 2000, 2001, 2002, 2003, 2004, 2005, 2006 & 2007

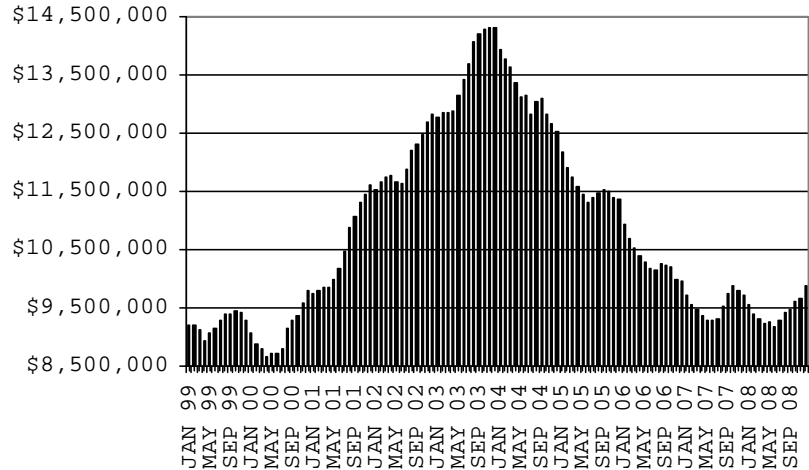
CASES



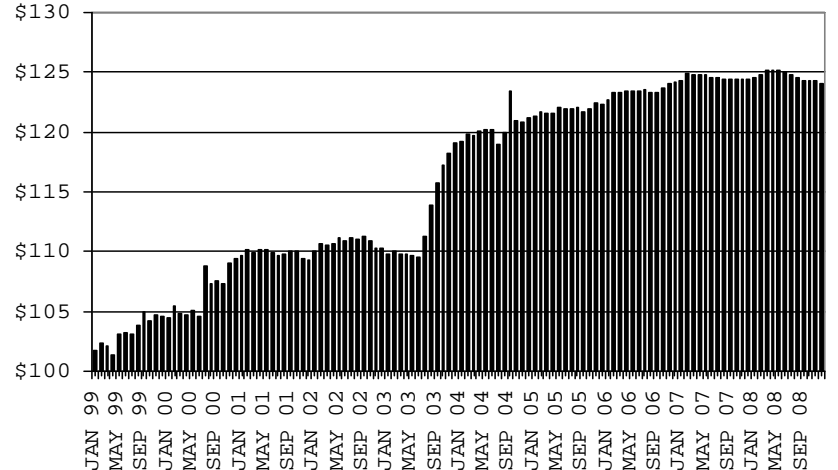
RECIPIENTS



PAYMENTS



AVERAGE PAYMENTS PER RECIPIENT



**TABLE 1A
CA-UP**

CASH ASSISTANCE UNEMPLOYED PARENT PROGRAM: ARIZONA 1

	DECEMBER 2008							CHANGE FROM			DECEMBER 2007		
	FAMILIES (CASES)	PERSONS (RECIP.)	ADULTS	CHILDREN	TOTAL PAYMENTS	AVERAGE PAYMENT/ CASE	AVERAGE PAYMENT/ RECIP.	FAMILIES (CASES)	PERSONS (RECIP.)	TOTAL PAYMENTS	FAMILIES (CASES)	PERSONS (RECIP.)	TOTAL PAYMENTS
ARIZONA	1,420	5,258	2,129	3,129	516,106	363.45	98.16	164	579	61,038	666	2,407	248,898
DISTRICT I													
MARICOPA	837	3,036	1,102	1,934	303,611	362.74	100.00	105	392	40,084	531	1,878	193,057
DISTRICT II													
PIMA	242	918	421	497	88,480	365.62	96.38	34	128	13,210	95	371	37,296
DISTRICT III													
APACHE	5	24	10	14	2,194	438.80	91.42	(1)	(4)	(240)	2	12	1,264
COCONINO	7	29	12	17	2,129	304.14	73.41	1	7	(180)	5	22	1,493
NAVAJO	82	347	155	192	32,035	390.67	92.32	6	14	1,615	8	40	4,852
YAVAPAI	24	76	31	45	7,301	304.21	96.07	9	23	2,382	18	56	5,534
DISTRICT IV													
LA PAZ	9	38	16	22	3,776	419.56	99.37	2	4	438	3	13	1,905
MOHAVE	61	231	119	112	22,276	365.18	96.43	(6)	(23)	(1,889)	20	80	8,111
YUMA	30	111	45	66	11,124	370.80	100.22	(4)	(19)	(1,919)	(10)	(32)	(2,279)
DISTRICT V													
GILA	4	19	8	11	1,886	471.50	99.26	0	(1)	254	(45)	(156)	(14,478)
PINAL	81	296	143	153	28,003	345.72	94.60	9	26	3,723	26	75	7,194
DISTRICT VI													
COCHISE	27	94	47	47	9,710	359.63	103.30	10	38	4,028	9	31	3,636
GRAHAM	5	16	10	6	1,464	292.80	91.50	0	(1)	129	0	2	32
GREENLEE	1	4	2	2	418	418.00	104.50	1	4	418	1	4	418
SANTA CRUZ	5	19	8	11	1,699	339.80	89.42	(2)	(9)	(1,015)	3	11	863

1/EXCLUDES: PRIOR MONTH NET TOTALS OF: 187 CASES; 717 RECIPIENTS; \$70,606.
GRANT DIVERSION TOTALS OF: 0 CASES; \$0.
ZERO PAY TOTALS OF 50 CASES; 220 RECIPIENTS.

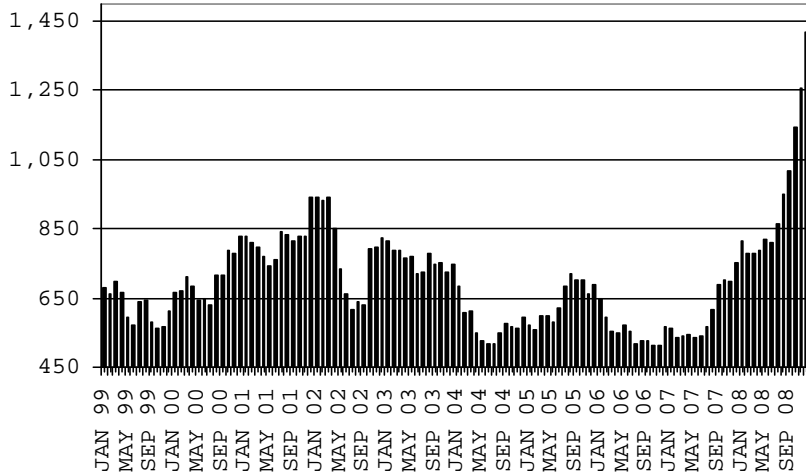
	CURRENT MO. CASES	CURRENT MO. RECIP.	CURRENT MO. DOLLARS	PRIOR MO. CASES	PRIOR MO. RECIP.	PRIOR MO. DOLLARS
PASQUA/YAQUI	20	80	7,423	5	21	1,213
WM APACHE	54	234	21,093	7	28	1,280
SALT RIVER	0	0	0	0	0	0
SAN CARLOS	0	0	0	0	0	0
HOPÍ	0	0	0	0	0	0
TOTAL	74	314	28,516	12	49	2,493

CASES WITH GRANT UNDER \$100 (SEE TABLE 1C).

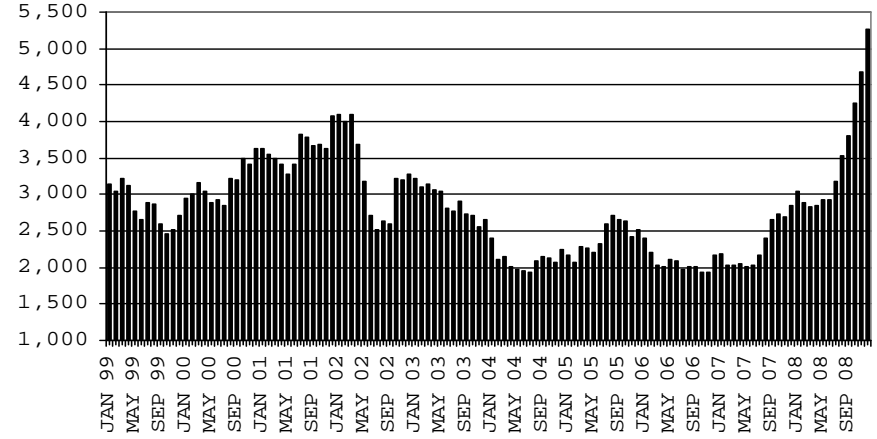
CHART 1A

CASH ASSISTANCE UNEMPLOYED PARENT PROGRAM COMPARISON OF CASES, RECIPIENTS, PAYMENTS & AVERAGE PAYMENTS FOR 1999, 2000, 2001, 2002, 2003, 2004, 2005, 2006 & 2007

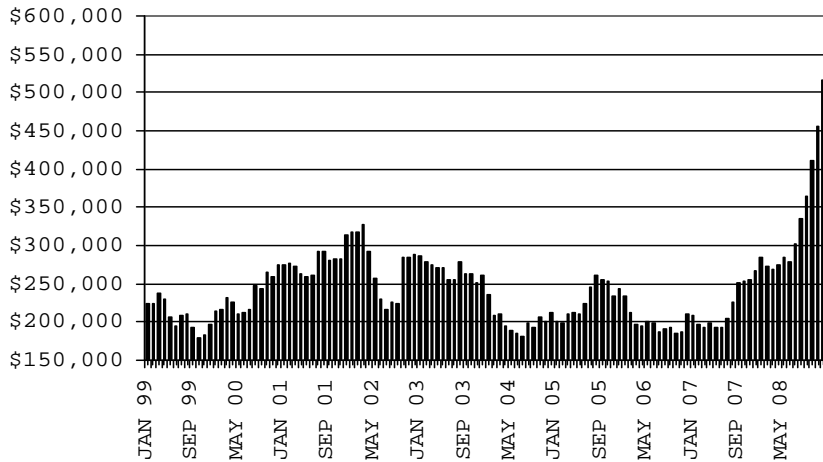
CASES



RECIPIENTS



PAYMENTS



AVERAGE PAYMENTS PER RECIPIENT

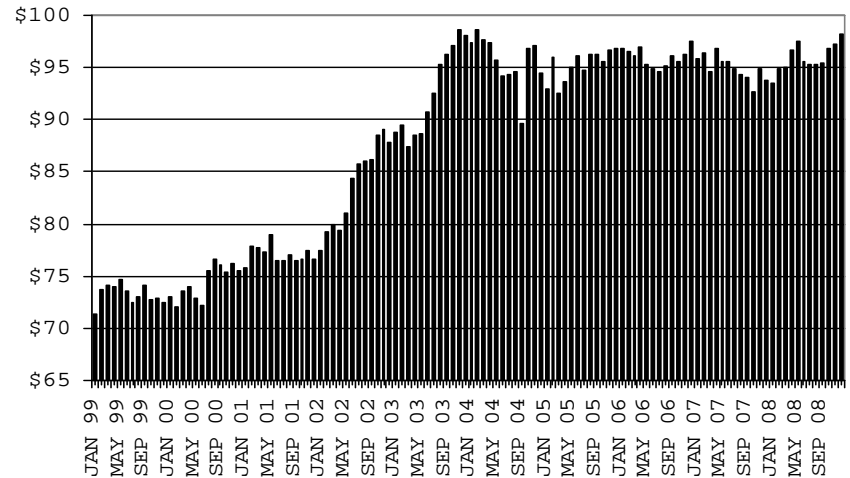


TABLE 1B 1/

CASH ASSISTANCE: ARIZONA
 CASES WITH GRANT UNDER \$100

	DECEMBER 2008							CHANGE FROM			DECEMBER 2007		
	FAMILIES (CASES)	PERSONS (RECIP.)	ADULTS	CHILDREN	TOTAL PAYMENTS	AVERAGE PAYMENT/ CASE	AVERAGE PAYMENT/ RECIP.	FAMILIES (CASES)	PERSONS (RECIP.)	TOTAL PAYMENTS	FAMILIES (CASES)	PERSONS (RECIP.)	TOTAL PAYMENTS
ARIZONA	703	1,454	390	1,064	50,339	71.61	34.62	37	77	3,457	63	141	2,366
DISTRICT I													
MARICOPA	407	845	209	636	27,150	66.71	32.13	22	52	1,997	57	132	2,696
DISTRICT II													
PIMA	114	223	66	157	8,291	72.73	37.18	3	0	(80)	(10)	(28)	(1,625)
DISTRICT III													
APACHE	4	9	4	5	277	69.25	30.78	2	5	52	(2)	(2)	(204)
COCONINO	9	23	7	16	774	86.00	33.65	2	4	244	3	11	412
NAVAJO	11	22	5	17	933	84.82	42.41	0	(1)	191	0	(4)	64
YAVAPAI	19	33	11	22	1,473	77.53	44.64	6	12	790	4	9	401
DISTRICT IV													
LA PAZ	9	19	9	10	801	89.00	42.16	1	3	57	0	2	259
MOHAVE	34	71	19	52	2,775	81.62	39.08	0	2	(14)	9	22	670
YUMA	24	55	17	38	1,973	82.21	35.87	(7)	(19)	(502)	6	6	350
DISTRICT V													
GILA	7	15	5	10	550	78.57	36.67	2	5	192	(6)	(11)	(555)
PINAL	37	84	21	63	2,846	76.92	33.88	1	(3)	(52)	10	15	659
DISTRICT VI													
COCHISE	19	37	11	26	1,863	98.05	50.35	3	10	451	2	7	(142)
GRAHAM	5	10	4	6	293	58.60	29.30	2	6	144	(9)	(12)	(520)
GREENLEE	0	0	0	0	0	0.00	0.00	(1)	(2)	(86)	(2)	(5)	(118)
SANTA CRUZ	4	8	2	6	340	85.00	42.50	1	3	73	1	(1)	19

EXCLUDES: PRIOR MONTH NET TOTALS OF 826 CASES; 1,715 RECIPIENTS; \$52,131.

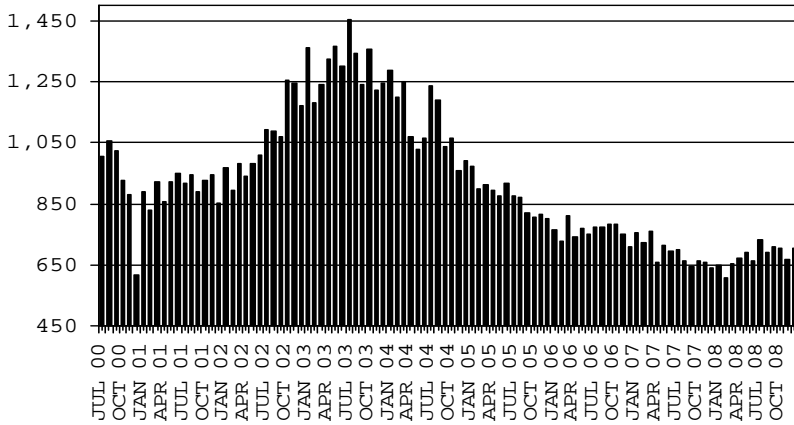
CHART 1B

CASH ASSISTANCE PROGRAM CASES WITH GRANT UNDER \$100

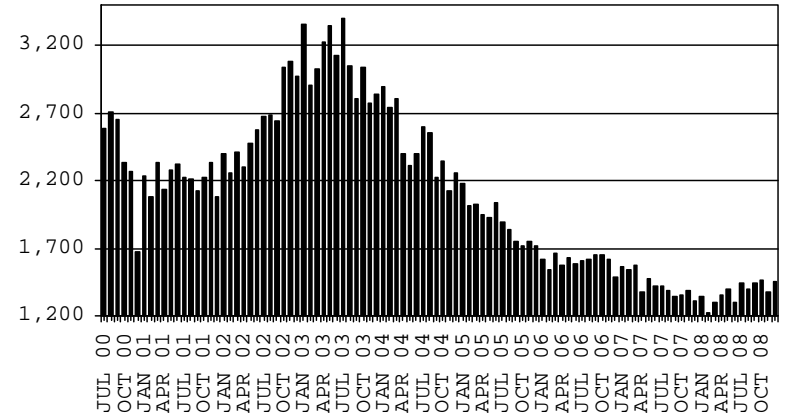
COMPARISON OF CASES, RECIPIENTS, PAYMENTS & AVERAGE PAYMENTS

FOR 2000, 2001, 2002, 2003, 2004, 2005, 2006 & 2007

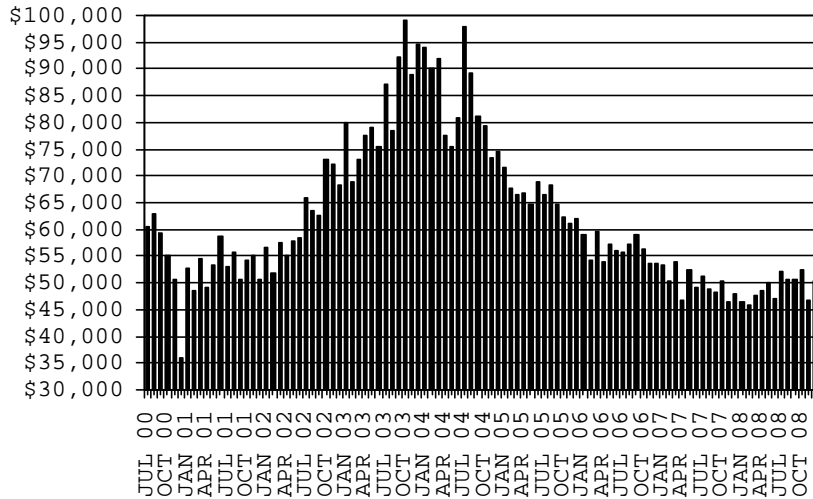
CASES



RECIPIENTS



PAYMENTS



AVERAGE PAYMENTS PER RECIPIENT

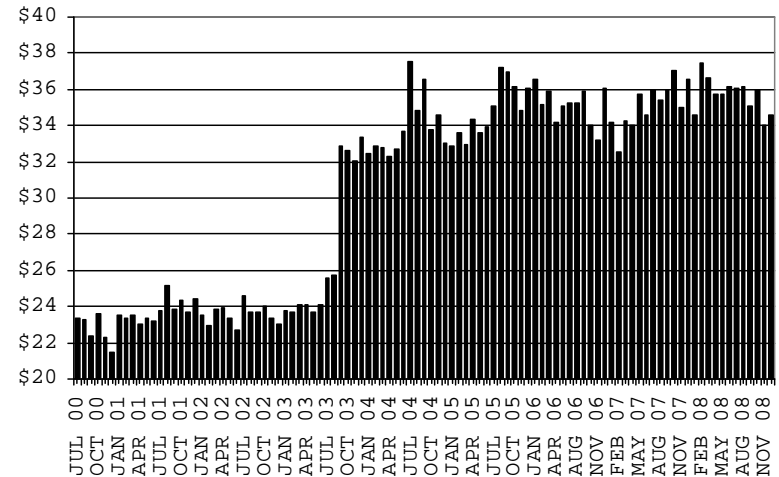


TABLE 1C 1/

CASH ASSISTANCE UNEMPLOYED PARENT PROGRAM: ARIZONA
 CASES WITH GRANT UNDER \$100

	CHANGE FROM												
	DECEMBER 2008							NOVEMBER 2008			DECEMBER 2007		
	FAMILIES (CASES)	PERSONS (RECIP.)	ADULTS	CHILDREN	TOTAL PAYMENTS	AVERAGE PAYMENT/ CASE	AVERAGE PAYMENT/ RECIP.	FAMILIES (CASES)	PERSONS (RECIP.)	TOTAL PAYMENTS	FAMILIES (CASES)	PERSONS (RECIP.)	TOTAL PAYMENTS
ARIZONA	26	81	27	54	1,436	55.23	17.73	5	14	68	15	48	977
DISTRICT I													
MARICOPA	18	56	16	40	994	55.22	17.75	4	12	93	14	47	777
DISTRICT II													
PIMA	5	17	7	10	205	41.00	12.06	2	6	42	2	7	102
DISTRICT III													
APACHE	0	0	0	0	0	0.00	0.00	0	0	0	0	0	0
COCONINO	0	0	0	0	0	0.00	0.00	0	0	0	0	0	0
NAVAJO	0	0	0	0	0	0.00	0.00	0	0	0	0	0	0
YAVAPAI	1	1	0	1	97	97.00	97.00	0	0	0	1	1	97
DISTRICT IV													
LA PAZ	0	0	0	0	0	0.00	0.00	0	0	0	(2)	(5)	(32)
MOHAVE	2	7	4	3	140	70.00	20.00	0	(2)	(6)	1	2	46
YUMA	0	0	0	0	0	0.00	0.00	(1)	(2)	(61)	(1)	(4)	(13)
DISTRICT V													
GILA	0	0	0	0	0	0.00	0.00	0	0	0	0	0	0
PINAL	0	0	0	0	0	0.00	0.00	0	0	0	0	0	0
DISTRICT VI													
COCHISE	0	0	0	0	0	0.00	0.00	0	0	0	0	0	0
GRAHAM	0	0	0	0	0	0.00	0.00	0	0	0	0	0	0
GREENLEE	0	0	0	0	0	0.00	0.00	0	0	0	0	0	0
SANTA CRUZ	0	0	0	0	0	0.00	0.00	0	0	0	0	0	0

EXCLUDES: PRIOR MONTH NET TOTALS OF 67 CASES; 238 RECIPIENTS; \$3,724.

CHART 1C

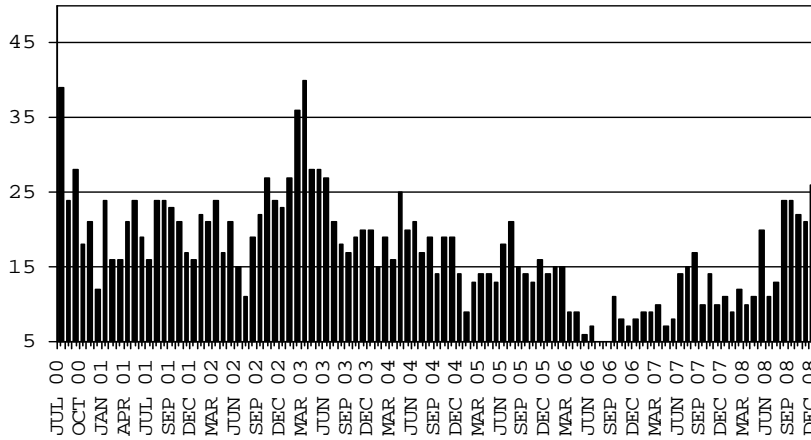
CASH ASSISTANCE UNEMPLOYED PARENT PROGRAM

CASES WITH GRANT UNDER \$100

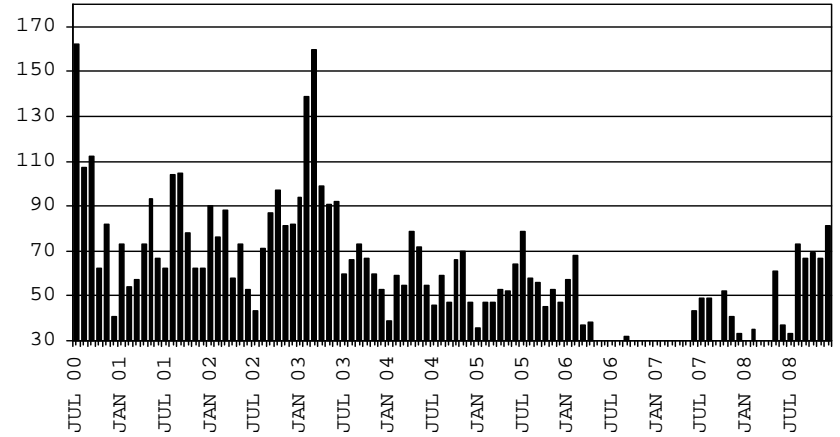
COMPARISON OF CASES, RECIPIENTS, PAYMENTS & AVERAGE PAYMENTS

FOR 2000, 2001, 2002, 2003, 2004, 2005, 2006 & 2007

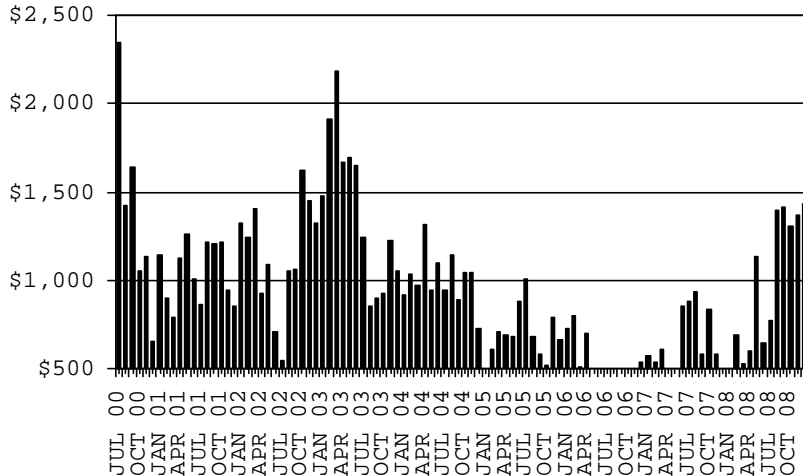
CASES



RECIPIENTS



PAYMENTS



AVERAGE PAYMENTS PER RECIPIENT

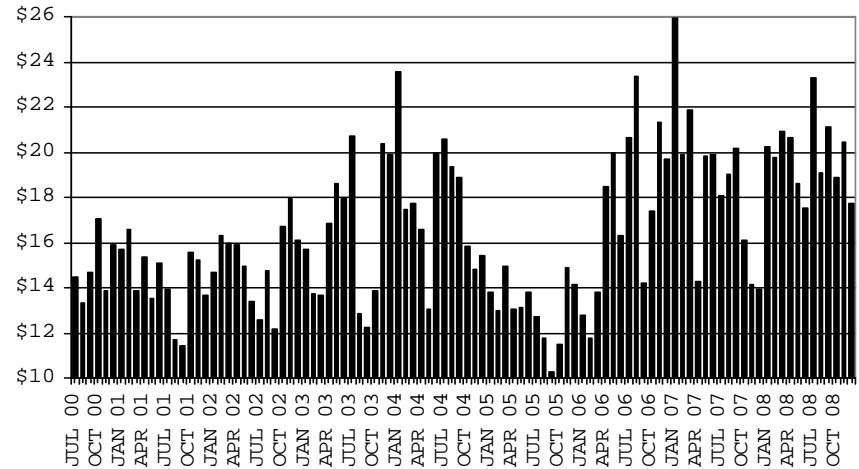


TABLE 2
GENERAL ASSISTANCE: ARIZONA 1,

	CHANGE FROM											
	DECEMBER 2008					NOVEMBER 2008			DECEMBER 2007			
	NUMBER OF CASES	PERSONS (RECIP.)	TOTAL PAYMENTS	AVERAGE PAYMENT/ CASE	AVERAGE PAYMENT/ RECIP.	NUMBER OF CASES	PERSONS (RECIP.)	TOTAL PAYMENTS	NUMBER OF CASES	PERSONS (RECIP.)	TOTAL PAYMENTS	
ARIZONA	1,621	1,629	241,473	148.97	148.23	32	32	4,975	296	299	39,592	
DISTRICT I												
MARICOPA	736	737	108,184	146.99	146.79	20	19	2,364	179	179	23,095	
DISTRICT II												
PIMA	369	372	55,631	150.76	149.55	(16)	(16)	(2,074)	26	29	4,072	
DISTRICT III												
APACHE	8	8	1,189	148.63	148.63	(1)	(1)	(3)	(4)	(5)	(731)	
COCONINO	23	23	3,046	132.43	132.43	1	1	(110)	4	3	298	
NAVAJO	46	47	6,301	136.98	134.06	9	9	1,424	5	6	(14)	
YAVAPAI	81	82	12,160	150.12	148.29	10	11	1,741	29	29	3,948	
DISTRICT IV												
LA PAZ	8	8	1,188	148.50	148.50	1	1	108	(2)	(2)	(217)	
MOHAVE	135	136	21,260	157.48	156.32	9	9	1,697	64	64	10,580	
YUMA	44	45	5,916	134.45	131.47	(1)	(1)	(173)	17	18	2,025	
DISTRICT V												
GILA	100	100	14,900	149.00	149.00	(6)	(6)	(842)	(29)	(29)	(4,993)	
PINAL	13	13	1,729	133.00	133.00	2	2	346	(15)	(15)	(2,454)	
	87	87	13,171	151.39	151.39	(8)	(8)	(1,188)	(14)	(14)	(2,539)	
DISTRICT VI												
COCHISE	71	71	11,698	164.76	164.76	6	6	843	7	7	1,529	
GRAHAM	56	56	9,103	162.55	162.55	3	3	324	6	6	1,195	
GREENLEE	7	7	1,211	173.00	173.00	2	2	346	1	1	173	
SANTA CRUZ	1	1	173	173.00	173.00	0	0	0	(3)	(3)	(454)	
	7	7	1,211	173.00	173.00	1	1	173	3	3	615	

1/EXCLUDES: PRIOR MONTH NET TOTALS OF : 266 CASES; 268 RECIPIENTS; \$61,983.
REFUGEE RESETTLEMENT PROGRAM: 546 CASES; 883 RECIPIENTS; \$157,526.

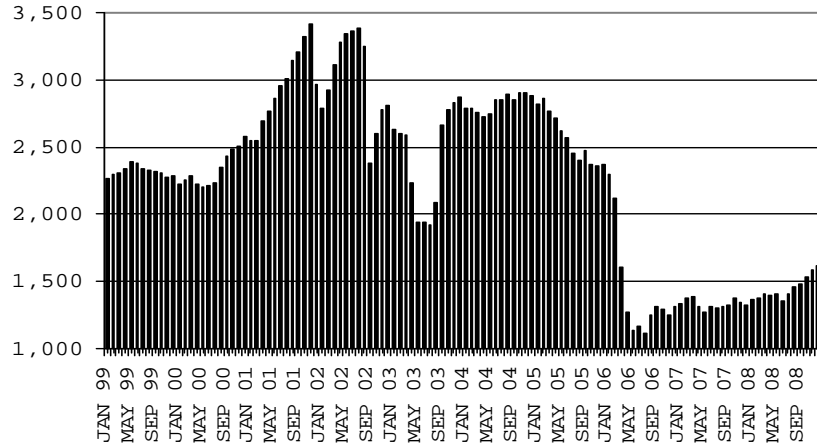
CHART 2

GENERAL ASSISTANCE PROGRAM

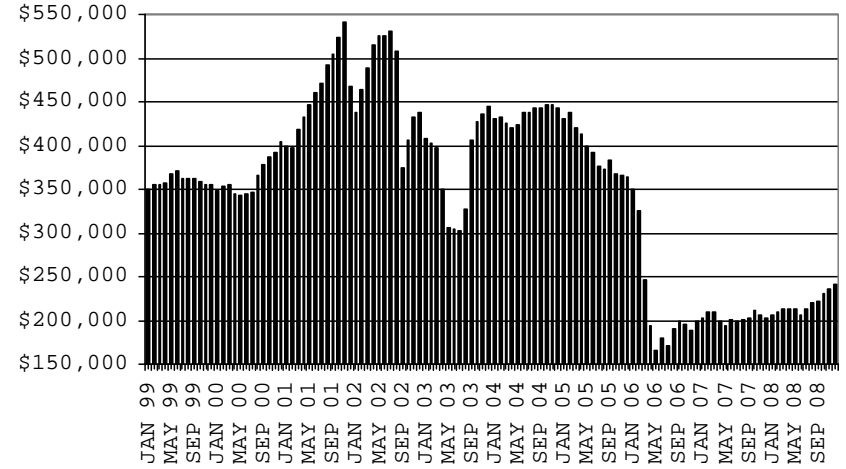
COMPARISON OF CASES, PAYMENTS & AVERAGE PAYMENTS

FOR 1999, 2000, 2001, 2002, 2003, 2004, 2005, 2006 & 2007

CASES



PAYMENTS



AVERAGE PAYMENT PER CASE

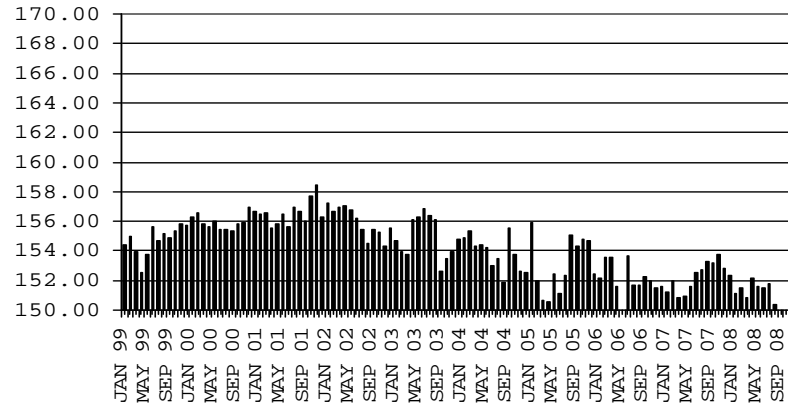


TABLE 4

TUBERCULOSIS CONTROL: ARIZONA 1/

	DECEMBER 2008					CHANGE FROM					
						NOVEMBER 2008			DECEMBER 2007		
	NUMBER OF CASES	PERSONS (RECIP.)	TOTAL PAYMENTS	AVERAGE PAYMENT/ CASE	AVERAGE PAYMENT/ RECIP.	NUMBER OF CASES	PERSONS (RECIP.)	TOTAL PAYMENTS	NUMBER OF CASES	PERSONS (RECIP.)	TOTAL PAYMENTS
ARIZONA	5	5	670	134.00	134.00	(2)	(2)	(83)	(4)	(4)	(395)
DISTRICT I											
MARICOPA	5	5	670	134.00	134.00	(2)	(2)	(83)	(3)	(3)	(287)
DISTRICT II											
PIMA	0	0	0	0.00	0.00	0	0	0	0	0	0
DISTRICT III	0	0	0	0	0.00	0	0	0	(1)	(1)	(108)
APACHE	0	0	0	0.00	0.00	0	0	0	0	0	0
COCONINO	0	0	0	0.00	0.00	0	0	0	0	0	0
NAVAJO	0	0	0	0.00	0.00	0	0	0	0	0	0
YAVAPAI	0	0	0	0.00	0.00	0	0	0	(1)	(1)	(108)
DISTRICT IV	0	0	0	0.00	0.00	0	0	0	0	0	0
LA PAZ	0	0	0	0.00	0.00	0	0	0	0	0	0
MOHAVE	0	0	0	0.00	0.00	0	0	0	0	0	0
YUMA	0	0	0	0.00	0.00	0	0	0	0	0	0
DISTRICT V	0	0	0	0.00	0.00	0	0	0	0	0	0
GILA	0	0	0	0.00	0.00	0	0	0	0	0	0
PINAL	0	0	0	0.00	0.00	0	0	0	0	0	0
DISTRICT VI	0	0	0	0.00	0.00	0	0	0	0	0	0
COCHISE	0	0	0	0.00	0.00	0	0	0	0	0	0
GRAHAM	0	0	0	0.00	0.00	0	0	0	0	0	0
GREENLEE	0	0	0	0.00	0.00	0	0	0	0	0	0
SANTA CRUZ	0	0	0	0.00	0.00	0	0	0	0	0	0

1/EXCLUDES: PRIOR MONTH NET TOTALS OF : 0 CASES; 0 RECIPIENTS; \$0.

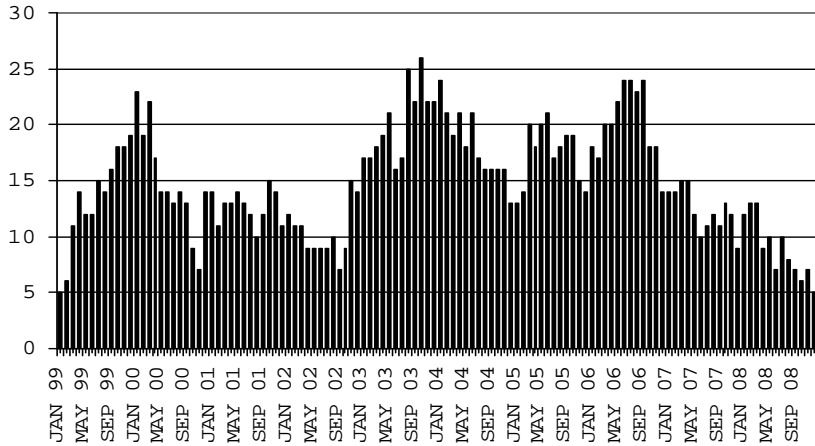
CHART 4

TUBERCULOSIS CONTROL PROGRAM

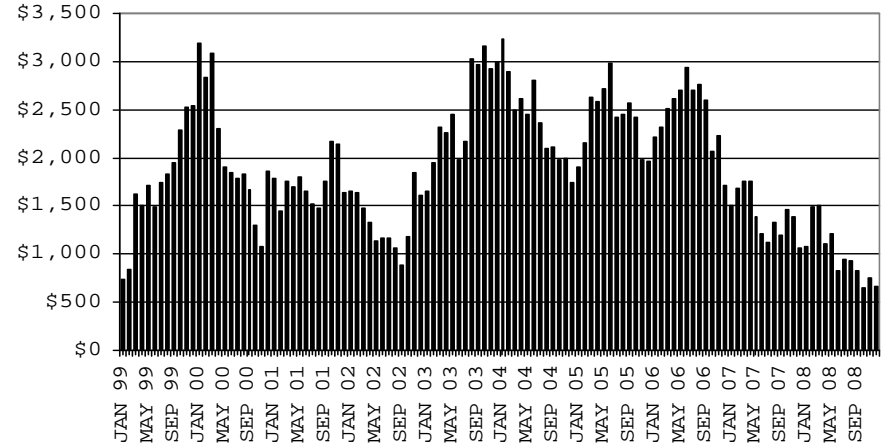
COMPARISON OF CASES, PAYMENTS & AVERAGE PAYMENTS

FOR 1999, 2000, 2001, 2002, 2003, 2004, 2005, 2006 & 2007

CASES



PAYMENTS



AVERAGE PAYMENT PER CASE

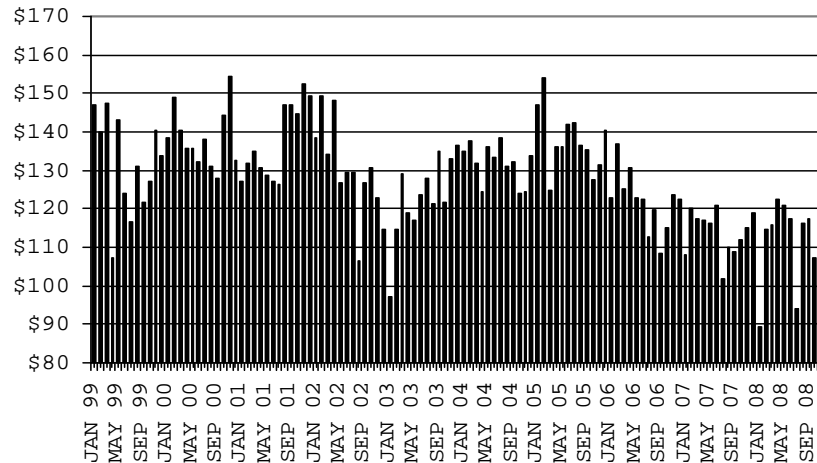


TABLE 6

SUPPLEMENTAL NUTRITION ASSISTANCE PROGRAM: ARIZONA 1

	CHANGE FROM										
	DECEMBER 2008					NOVEMBER 2008			DECEMBER 2007		
	HOUSEHOLDS	PERSONS	TOTAL COUPON ISSUANCE	AVERAGE ALLOT./ HOUSEHOLD	AVERAGE ALLOT./ PERSON	HOUSEHOLDS	PERSONS	TOTAL COUPON ISSUANCE	HOUSEHOLDS	PERSONS	TOTAL COUPON ISSUANCE
ARIZONA	308,274	742,936	83,352,327	270.38	112.19	10,761	21,618	2,510,962	63,049	145,007	22,348,982
DISTRICT I											
MARICOPA	158,621	384,722	44,120,947	278.15	114.68	6,379	12,815	1,579,665	36,494	86,257	13,067,290
DISTRICT II											
PIMA	53,744	120,810	13,578,897	252.66	112.40	1,668	2,750	319,625	10,147	20,718	3,382,799
DISTRICT III											
APACHE	6,826	20,409	2,172,046	318.20	106.43	64	128	(5,659)	574	1,152	298,093
COCONINO	6,608	18,878	1,973,564	298.66	104.54	295	833	86,915	1,015	2,625	411,832
NAVAJO	10,989	30,225	3,207,398	291.87	106.12	324	767	64,024	1,374	3,404	563,802
YAVAPAI	9,280	19,176	2,119,842	228.43	110.55	430	902	108,415	2,468	5,295	735,488
DISTRICT IV											
LA PAZ	1,512	3,257	371,869	245.95	114.18	8	24	3,820	210	383	74,818
MOHAVE	14,391	29,767	3,396,238	236.00	114.09	533	1,010	125,204	3,076	5,796	899,187
YUMA	12,124	32,575	3,317,842	273.66	101.85	62	(94)	(7,179)	1,761	4,607	677,143
DISTRICT V											
GILA	4,221	9,566	1,076,450	255.02	112.53	120	199	19,362	573	1,031	190,889
PINAL	15,859	40,378	4,513,675	284.61	111.79	538	1,396	141,821	3,255	8,768	1,263,673
DISTRICT VI											
COCHISE	8,200	18,151	1,932,873	235.72	106.49	60	116	10,738	1,183	2,556	403,150
GRAHAM	2,250	5,272	573,534	254.90	108.79	189	488	48,757	149	270	90,637
GREENLEE	307	653	70,332	229.09	107.71	61	165	16,940	72	167	20,536
SANTA CRUZ	3,342	9,097	926,820	277.32	101.88	30	119	(1,486)	698	1,978	269,645

1/EXCLUDES: PRIOR MONTH NET TOTALS OF : 11,710 CASES; 30,147 RECIPIENTS; \$1,786,926.
 AGED CANCELATIONS: 0 CASES; 0 RECIPIENTS; 0.
 SNAP COUPON CONVERSIONS: 0 CASES; 0 RECIPIENTS; \$0.
 SNAP REINSTATED: 0 CASES; \$0.
 SNAP ZERO PAY: 8,966 CASES; 36,972 RECIPIENTS.

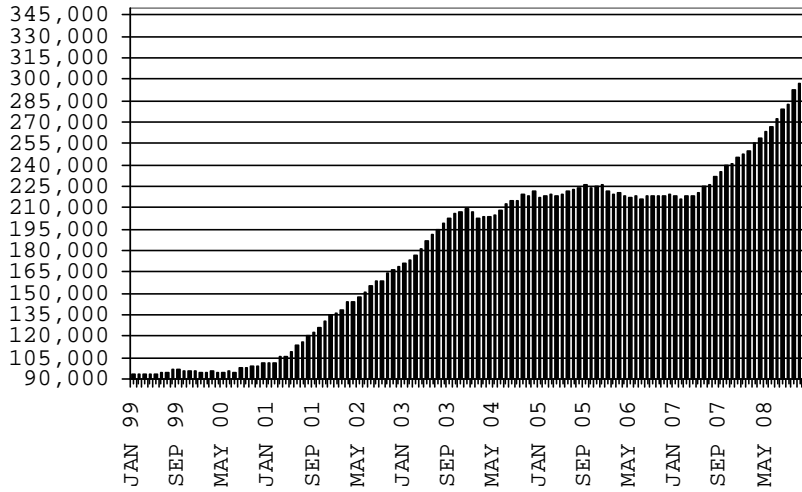
CHART 6

FOOD STAMPS PROGRAM

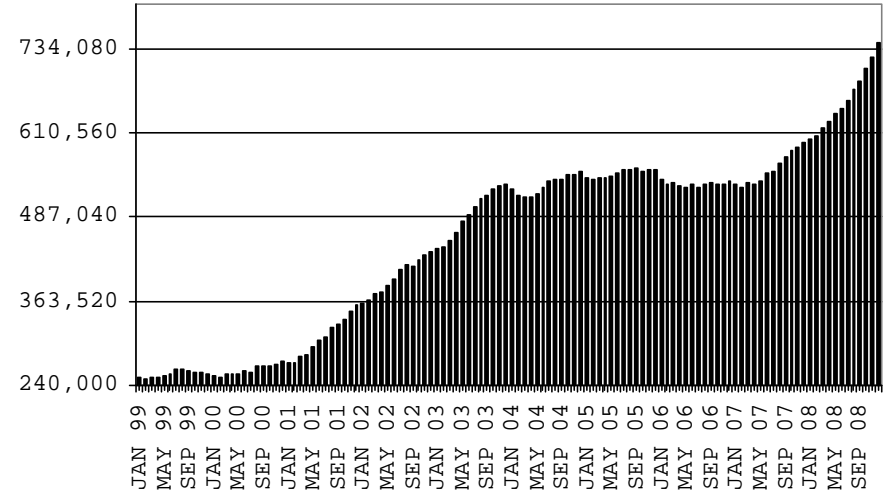
COMPARISON OF HOUSEHOLDS, RECIPIENTS, PAYMENTS & AVERAGE PAYMENTS

FOR 1999, 2000, 2001, 2002, 2003, 2004, 2005, 2006 & 2007

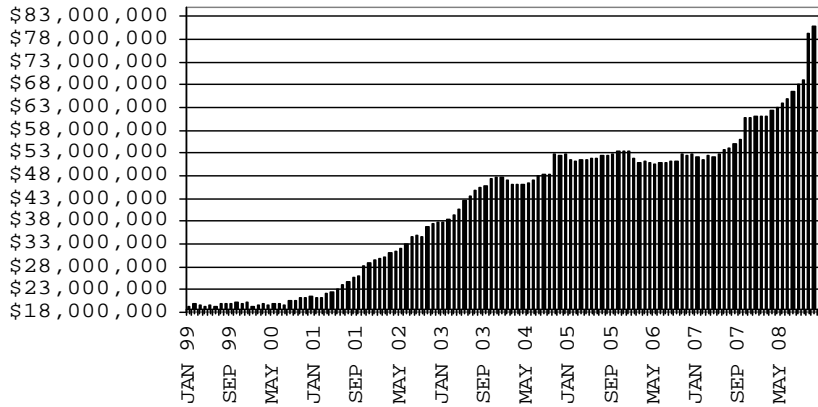
HOUSEHOLDS



RECIPIENTS



TOTAL PAYMENTS



AVERAGE PAYMENT PER HOUSEHOLD

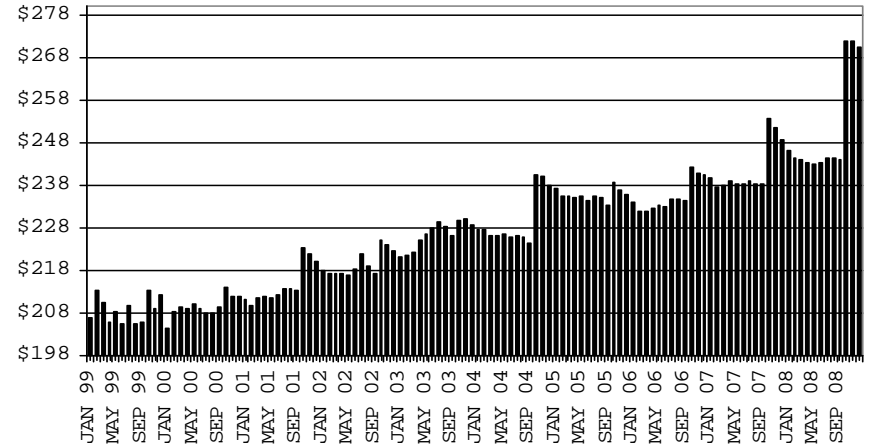


TABLE 7A
MEDICAL ASSISTANCE PROGRAM
RECIPIENTS

DECEMBER 2008

	SOBRA WOMAN 133% FPL	SOBRA CHILD	ADULT W/O CHILD 100% FPL	FOSTER CARE	1931 36% FPL	FEDERAL EMERGENCY SERVICES	INFANTS	ADULT W/O CHILD 40% FPL	MEDICAL W/SPEND DOWN	SOBRA WOMAN 100% FPL	SOBRA CHILD 100% FPL	TRANSITIONAL MEDICAL T1 - T4	1931 100% FPL	YATI	OTHER	TOTAL CASES
ARIZONA	11,350	64,571	41,559	10,963	294,381	84,181	49,018	105,997	5,570	3,505	177,980	43,572	86,599	268	25,506	1,005,020
DISTRICT I																
MARICOPA	5,950	36,260	18,249	5,555	159,237	65,130	29,164	49,004	2,822	1,771	100,850	21,163	41,083	145	12,612	548,995
DISTRICT II																
PIMA	1,768	9,935	8,194	3,109	44,478	10,330	6,877	19,253	883	550	26,959	7,744	15,063	86	4,591	159,820
DISTRICT III																
APACHE	208	1,406	803	40	10,624	85	956	4,125	73	91	3,762	1,047	2,271	3	391	25,885
COCONINO	367	1,473	1,167	132	7,462	525	1,138	3,116	137	106	3,902	1,245	2,338	4	369	23,481
NAVAJO	375	2,302	1,317	133	11,455	340	1,384	5,123	163	114	4,877	1,461	3,080	3	594	32,721
YAVAPAI	408	1,840	1,877	451	6,326	1,485	1,268	3,437	324	115	4,565	1,319	2,883	12	1,064	27,374
DISTRICT IV																
LA PAZ	35	225	214	8	1,251	155	185	641	33	16	619	184	337	0	172	4,075
MOHAVE	451	2,084	2,187	253	10,457	873	1,573	5,617	400	159	6,921	1,967	4,169	2	1,401	38,514
YUMA	577	2,454	2,380	270	11,282	2,033	1,936	3,548	215	187	8,528	2,630	5,292	2	1,340	42,674
DISTRICT V																
GILA	142	665	571	72	4,006	142	491	2,121	70	55	1,677	484	1,062	0	340	11,898
PINAL	555	3,656	2,007	557	15,814	1,745	2,226	5,742	231	183	7,881	2,079	4,321	9	1,244	48,250
DISTRICT VI																
COCHISE	242	1,157	1,384	265	6,282	681	913	2,485	122	82	3,570	1,224	2,342	2	795	21,546
GRAHAM	147	456	384	78	2,239	54	405	919	37	28	1,027	488	676	0	138	7,076
GREENLEE	19	32	43	8	285	10	54	109	3	6	133	34	68	0	21	825
SANTA CRUZ	106	626	782	32	3,183	593	448	757	57	42	2,709	503	1,614	0	434	11,886

TABLE 7B
MEDICAL ASSISTANCE PROGRAM
RECIPIENTS

CHANGE FROM
NOVEMBER 2008

	SOBRA WOMAN 133% FPL	SOBRA CHILD	ADULT W/O CHILD 100% FPL	FOSTER CARE	1931 36% FPL	FEDERAL EMERGENCY SERVICES	INFANTS	ADULT W/O CHILD 40% FPL	MEDICAL W/SPEND DOWN	SOBRA WOMAN 100% FPL	SOBRA CHILD 100% FPL	TRANSITIONAL MEDICAL T1 - T4	1931 100% FPL	YATI	OTHER	TOTAL CASES
ARIZONA	(327)	(230)	(203)	24	3,040	440	(20)	480	(259)	(98)	1,364	(30)	1,052	2	252	5,487
DISTRICT I																
MARICOPA	(221)	(188)	(58)	(7)	2,255	588	(40)	266	(155)	(59)	956	293	590	(1)	86	4,305
DISTRICT II																
PIMA	(51)	(99)	(89)	43	(155)	(54)	33	(76)	(31)	(36)	106	(70)	211	6	75	(187)
DISTRICT III																
APACHE	(6)	(55)	(25)	0	6	1	2	(36)	1	3	34	(36)	(2)	0	(8)	(121)
COCONINO	4	26	24	(2)	109	1	(5)	(18)	13	(4)	32	(42)	77	1	10	226
NAVAJO	15	84	15	(4)	93	14	0	49	(6)	(1)	115	(120)	42	(1)	7	302
YAVAPAI	(8)	36	22	(2)	270	21	4	104	2	(6)	32	(27)	55	1	(12)	492
DISTRICT IV																
LA PAZ	(6)	(8)	(2)	0	34	(13)	(3)	5	5	3	(53)	22	(25)	0	9	(32)
MOHAVE	10	4	33	(11)	148	(11)	0	99	(7)	5	8	21	60	1	31	391
YUMA	(13)	(9)	(109)	(3)	44	(78)	9	(45)	(26)	(15)	(76)	7	(121)	0	(23)	(458)
DISTRICT V																
GILA	(47)	(50)	(10)	2	109	(27)	(9)	59	(52)	19	150	(7)	145	(3)	36	315
PINAL	2	(27)	(21)	1	3	(4)	2	18	(7)	12	2	12	(3)	(1)	20	9
	(49)	(23)	11	1	106	(23)	(11)	41	(45)	7	148	(19)	148	(2)	16	306
DISTRICT VI																
COCHISE	(4)	29	(4)	8	127	(2)	(11)	73	(3)	(7)	60	(71)	20	(2)	41	254
GRAHAM	(5)	29	(36)	3	(2)	3	5	21	(5)	(4)	(22)	20	5	(1)	17	28
GREENLEE	9	(2)	12	2	28	(8)	(4)	30	(4)	(3)	53	(63)	17	(1)	0	66
SANTA CRUZ	(1)	(1)	5	0	30	0	6	4	(3)	1	0	(16)	8	0	(1)	32
	(7)	3	15	3	71	3	(18)	18	9	(1)	29	(12)	(10)	0	25	128

TABLE 7C
MEDICAL ASSISTANCE PROGRAM
RECIPIENTS

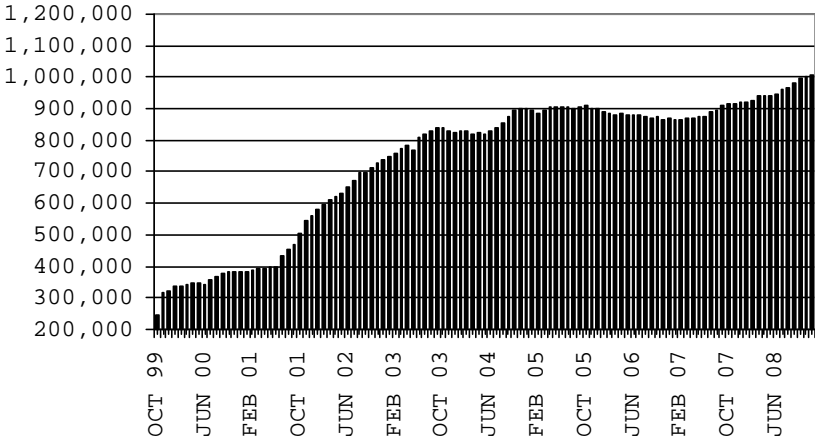
CHANGE FROM
DECEMBER 2007

	SOBRA WOMAN 133% FPL	SOBRA CHILD	ADULT W/O CHILD 100% FPL	FOSTER CARE	1931 36% FPL	FEDERAL EMERGENCY SERVICES	INFANTS	ADULT W/O CHILD 40% FPL	MEDICAL W/SPEND DOWN	SOBRA WOMAN 100% FPL	SOBRA CHILD 100% FPL	TRANSITIONAL MEDICAL T1 - T4	3E 1931 100% FPL	YATI	OTHER	TOTAL CASES
ARIZONA	(38)	2,508	3,617	1,259	34,463	(1,170)	(1,496)	15,834	311	227	17,159	80	9,877	33	3,042	85,706
DISTRICT I																
MARICOPA	119	1,665	2,091	747	23,864	(513)	(1,230)	9,544	(2)	116	11,741	97	5,383	35	1,745	55,402
DISTRICT II																
PIMA	23	496	709	340	4,125	(388)	(233)	2,723	82	(15)	1,463	572	1,141	11	533	11,582
DISTRICT III	(90)	368	144	45	2,099	(98)	(221)	1,064	147	22	1,312	(116)	1,101	(3)	199	5,973
APACHE	(36)	54	(50)	1	290	(16)	7	(127)	(3)	3	67	(83)	10	3	35	155
COCONINO	(9)	80	13	8	545	(4)	(69)	206	47	6	275	6	253	(8)	28	1,377
NAVAJO	(1)	177	(19)	17	414	15	(30)	382	3	(9)	460	(43)	373	1	43	1,783
YAVAPAI	(44)	57	200	19	850	(93)	(129)	603	100	22	510	4	465	1	93	2,658
DISTRICT IV	(34)	(153)	331	44	1,442	(213)	69	1,312	109	39	1,251	(204)	1,056	1	373	5,423
LA PAZ	(2)	(14)	0	(7)	61	(31)	11	75	(2)	1	56	(45)	33	0	20	156
MOHAVE	(33)	(40)	225	24	1,100	(85)	45	936	85	3	512	18	566	0	201	3,557
YUMA	1	(99)	106	27	281	(97)	13	301	26	35	683	(177)	457	1	152	1,710
DISTRICT V	(45)	(47)	217	55	1,951	30	16	877	(31)	47	1,201	(80)	902	(4)	145	5,234
GILA	5	(74)	52	(1)	(44)	13	25	153	(30)	24	188	(23)	128	(2)	69	483
PINAL	(50)	27	165	56	1,995	17	(9)	724	(1)	23	1,013	(57)	774	(2)	76	4,751
DISTRICT VI	(11)	179	125	28	982	12	103	314	6	18	191	(189)	294	(7)	47	2,092
COCHISE	(17)	101	66	14	174	(1)	73	161	0	14	24	46	124	(5)	38	812
GRAHAM	14	32	(12)	20	227	(25)	39	81	17	4	(84)	(61)	25	(2)	13	288
GREENLEE	(12)	(12)	6	(4)	(11)	4	(7)	14	(3)	5	28	(21)	4	0	(3)	(12)
SANTA CRUZ	4	58	65	(2)	592	34	(2)	58	(8)	(5)	223	(153)	141	0	(1)	1,004

CHART 7

MEDICAL ASSISTANCE PROGRAM COMPARISON OF RECIPIENTS FOR 1999, 2000, 2001, 2002, 2003, 2004, 2005, 2006 & 2007

TOTAL RECIPIENTS



NEW SERIES WHICH INCLUDES 1931