

\*\*\*\* STATISTICAL BULLETIN \*\*\*\*  
ARIZONA DEPARTMENT OF ECONOMIC SECURITY  
FAMILY ASSISTANCE ADMINISTRATION  
BOX 6123, PHOENIX, ARIZONA 85005  
PHONE (602) 542-3678

FEBRUARY 2007

THIS ISSUE OF THE STATISTICAL BULLETIN COMPARES FEBRUARY 2007 DATA FOR EACH OF THE INDICATED PROGRAMS WITH THE INFORMATION FOR JANUARY 2007 AND FEBRUARY 2006. STATEWIDE SUMMARIES OF ACTIVITY WITHIN EACH OF THE SPECIFIC PROGRAMS FOR THIS REPORT PERIOD ARE DISCUSSED BELOW. THE TABLES COMPARE CURRENT AND PRIOR MONTH DATA. DISTRICT AND COUNTY COMPARISONS ARE PROVIDED WITHIN THIS BULLETIN

CASH ASSISTANCE (CA)

COMPARING TO JANUARY 2007, FEBRUARY 2007 CASES DECREASED BY 658 (1.82%) TO 35,460. RECIPIENTS DECREASED BY 1,651 (2.11%) TO 76,458. PAYMENTS DECREASED BY \$162,902 (1.68%) TO \$9,549,117. AVERAGE PAYMENT PER CASE INCREASED BY \$0.39 (0.15%) TO \$269.29. PAYMENT PER RECIPIENT INCREASED BY \$0.55 (0.44%) TO \$124.89.

COMPARING TO FEBRUARY 2006, FEBRUARY 2007 CASES DECREASED BY 3,793 (9.66%). RECIPIENTS DECREASED BY 10,284 (11.86%). TOTAL PAYMENTS DECREASED BY \$1,147,487 (10.73%). THE AVERAGE PAYMENT PER CASE DECREASED BY \$3.21 (1.18%). THE AVERAGE PAYMENT PER RECIPIENT INCREASED BY \$1.57 (1.40%).

CASH ASSISTANCE UNEMPLOYED PARENT PROGRAM (CA-UP)

COMPARING TO JANUARY 2007, FEBRUARY 2007 CASES DECREASED BY 27 (4.80%) TO 535. RECIPIENTS DECREASED BY 141 (6.46%) TO 2,041. PAYMENTS DECREASED BY \$12,282 (5.88%) TO \$196,731. AVERAGE PAYMENT PER CASE DECREASED BY \$4.19 (1.13%) TO \$367.72. PAYMENT PER RECIPIENT INCREASED BY \$0.60 (0.63%) TO \$96.39.

COMPARING TO FEBRUARY 2006, FEBRUARY 2007 CASES DECREASED BY 59 (9.93%). RECIPIENTS DECREASED BY 166 (7.52%). TOTAL PAYMENTS DECREASED BY \$16,485 (7.73%). THE AVERAGE PAYMENT PER CASE INCREASED BY \$8.78 (2.45%). THE AVERAGE PAYMENT PER RECIPIENT DECREASED BY \$0.22 (0.23%).

CASH ASSISTANCE WITH GRANT UNDER \$100 (CA-MOE)

COMPARING TO JANUARY 2007, FEBRUARY 2007 CASES DECREASED BY 32 (4.23%) TO 724. RECIPIENTS DECREASED BY 18 (1.15%) TO 1,545. PAYMENTS DECREASED BY \$3,171 (5.94%) TO \$50,257. AVERAGE PAYMENT PER CASE DECREASED BY \$1.25 (1.77%) TO \$69.42. AVERAGE PAYMENT PER RECIPIENT DECREASED BY \$1.65 (4.83%) TO \$32.53.

COMPARING TO FEBRUARY 2006, FEBRUARY 2007 CASES DECREASED BY 5 (0.69%). RECIPIENTS INCREASED BY 5 (0.32%). TOTAL PAYMENTS DECREASED BY \$3,848 (7.11%). THE AVERAGE PAYMENT PER CASE DECREASED BY \$4.80 (6.47%). THE AVERAGE PAYMENT PER RECIPIENT DECREASED BY \$2.60 (7.40%).

CASH ASSISTANCE UNEMPLOYED PARENT PROGRAM WITH GRANT UNDER \$100 (CA-UP-MOE) NEW PROGRAM STARTING 7/01

COMPARING TO JANUARY 2007, FEBRUARY 2007 CASES INCREASED BY 0 (0.00%) TO 9. RECIPIENTS INCREASED BY 5 (22.73%) TO 27. PAYMENTS DECREASED BY \$33 (5.78%) TO \$538. AVERAGE PAYMENT PER CASE DECREASED BY \$3.66 (5.77%) TO \$59.78. PAYMENT PER RECIPIENT DECREASED BY \$6.02 (23.20%) TO \$19.93.

COMPARING TO FEBRUARY 2006, FEBRUARY 2007 CASES DECREASED BY 6 (40.00%). RECIPIENTS DECREASED BY 41 (7.18%). TOTAL PAYMENTS DECREASED BY \$261 (32.67%). THE AVERAGE PAYMENT PER CASE INCREASED BY \$6.51 (12.22%). THE AVERAGE PAYMENT PER RECIPIENT INCREASED BY \$8.18 (69.62%).

GENERAL ASSISTANCE (GA)

COMPARING TO JANUARY 2007, FEBRUARY 2007 CASES INCREASED BY 50 (3.76%) TO 1,381. RECIPIENTS INCREASED BY 52 (3.89%) TO 1,390. PAYMENTS INCREASED BY \$7,486 (3.70%) TO \$209,862. AVERAGE PAYMENT PER CASE DECREASED BY \$0.09 (0.06%) TO \$151.96. AVERAGE PAYMENT PER RECIPIENT DECREASED BY \$0.27 (0.18%) TO \$150.98.

COMPARING TO FEBRUARY 2006, FEBRUARY 2007 CASES DECREASED BY 743 (34.98%). RECIPIENTS DECREASED BY 748 (34.99%). TOTAL PAYMENTS DECREASED BY \$116,340 (35.67%). THE AVERAGE PAYMENT PER CASE DECREASED BY \$1.62 (1.05%). THE AVERAGE PAYMENT PER RECIPIENT DECREASED BY \$1.59 (1.04%).

TUBERCULOSIS CONTROL PROGRAM (TC)

COMPARING TO JANUARY 2007, FEBRUARY 2007 CASES INCREASED BY 0 (0.00%) TO 14. RECIPIENTS INCREASED BY 0 (0.00%) TO 14. PAYMENTS INCREASED BY \$172 (11.38%) TO \$1,683. AVERAGE PAYMENT PER CASE INCREASED BY \$12.28 (11.38%) TO \$120.21. AVERAGE PAYMENT PER RECIPIENT INCREASED BY \$12.28 (11.38%) TO \$120.21.

COMPARING TO FEBRUARY 2006, FEBRUARY 2007 CASES DECREASED BY 3 (17.65%). RECIPIENTS DECREASED BY 3 (17.65%). TOTAL PAYMENTS DECREASED BY \$641 (27.58%). THE AVERAGE PAYMENT PER CASE DECREASED BY \$16.50 (12.07%). THE AVERAGE PAYMENT PER RECIPIENT DECREASED BY \$16.50 (12.07%).

SUPPLEMENTAL PAYMENTS PROGRAM (SPP)

AS A RESULT OF ARIZONA'S OMNIBUS BUDGET RECONCILIATION BILL, HB 2535, THE SUPPLEMENTAL PAYMENT PROGRAM (SPP) IS BEING SUSPENDED EFFECTIVE JULY, 2003 THROUGH JUNE, 2004.

FOOD STAMP PROGRAM (FS)

COMPARING TO JANUARY 2007, FEBRUARY 2007 FOOD STAMP HOUSEHOLDS DECREASED BY 1,290 (0.59%) TO 216,555. PERSONS RECEIVING FOOD STAMPS DECREASED BY 3,474 (0.65%) TO 530,707. TOTAL COUPON ISSUANCE DECREASED BY \$775,325 (1.48%) TO \$51,480,702. THE AVERAGE HOUSEHOLD ALLOTMENT DECREASED BY \$2.15 (0.90%) TO \$237.73. THE AVERAGE ALLOTMENT PER PERSON DECREASED BY \$0.82 (0.84%) TO \$97.00.

COMPARING TO FEBRUARY 2006, FEBRUARY 2007 FOOD STAMP HOUSEHOLDS DECREASED BY 2,945 (1.34%). PERSONS RECEIVING FOOD STAMPS DECREASED BY 5,668 (1.06%). TOTAL COUPON ISSUANCE INCREASED BY \$620,237 (1.22%). THE AVERAGE ALLOTMENT PER HOUSEHOLD INCREASED BY \$6.02 (2.60%). THE AVERAGE ALLOTMENT PER PERSON INCREASED BY \$2.18 (2.30%).

MEDICAL ASSISTANCE PROGRAM (MA) NEW TABLE INCLUDES PROP. 204 CATEGORIES

COMPARING TO JANUARY 2007, FEBRUARY 2007 TOTAL RECIPIENTS TOTAL RECIPIENTS DECREASED BY 965 (0.11%). SOBRA WOMEN AT 140% FPL INCREASED BY 63 (0.58%). SOBRA CHILDREN INCREASED BY 133 (0.23%). ADULTS W/O CHILD AT 100% DECREASED BY 59 (0.16%). FOSTER CARE INCREASED BY 24 (0.28%). 1931 AT 36% FPL DECREASED BY 1,134 (0.46%). EMERGENCY SERVICES INCREASED BY 433 (0.52%). INFANTS DECREASED BY 458 (0.92%). ADULT W/O CHILD AT 140% INCREASED BY 255 (0.33%). MEDICAL W/SPEND DOWN DECREASED BY 98 (1.86%). SOBRA WOMAN AT 100% DECREASED BY 70 (2.20%). SOBRA CHILD AT 100% INCREASED BY 565 (0.38%). TRANSITIONAL MEDICAL DECREASED BY 1,008 (2.13%). 1931 AT 100% INCREASED BY 265 (0.38%). YATI INCREASED BY 6 (2.79%). ALL OTHER CATEGORIES INCREASED BY 118 (0.60%).

COMPARING TO FEBRUARY 2006, FEBRUARY 2007 TOTAL RECIPIENTS TOTAL RECIPIENTS DECREASED BY 18,975 (2.15%). SOBRA WOMEN AT 140% FPL INCREASED BY 209 (1.95%). SOBRA CHILDREN INCREASED BY 555 (0.96%). ADULTS W/O CHILD AT 100% DECREASED BY 1,968 (5.20%). FOSTER CARE INCREASED BY 313 (3.73%). 1931 AT 36% FPL DECREASED BY 11,937 (4.64%). EMERGENCY SERVICES INCREASED BY 225 (0.27%). INFANTS INCREASED BY 388 (0.79%). ADULT W/O CHILD AT 140% DECREASED BY 7,109 (8.33%). MEDICAL W/SPEND DOWN DECREASED BY 328 (5.97%). SOBRA WOMAN AT 100% INCREASED BY 164 (5.58%). SOBRA CHILD AT 100% INCREASED BY 2,791 (1.92%). TRANSITIONAL MEDICAL DECREASED BY 1,933 (4.01%). 1931 AT 100% DECREASED BY 1,460 (2.02%). YATI INCREASED BY 46 (26.29%). ALL OTHER CATEGORIES INCREASED BY 1,069 (5.70%).

# TANF SUMMARY

## TABLES 1, 1A, 1B, & 1C: ARIZONA 1

	FEBRUARY 2007							JANUARY 2007			FEBRUARY 2006		
	FAMILIES (CASES)	PERSONS (RECIP.)	ADULTS	CHILDREN	TOTAL PAYMENTS	AVERAGE	AVERAGE	FAMILIES (CASES)	PERSONS (RECIP.)	TOTAL PAYMENTS	FAMILIES (CASES)	PERSONS (RECIP.)	TOTAL PAYMENTS
						PAYMENT/ CASE	PAYMENT/ RECIP.						
ARIZONA	36,728	80,071	19,342	60,729	9,796,643	266.73	122.35	(717)	(1,805)	(178,388)	(3,863)	(10,486)	(1,168,081)
DISTRICT I													
MARICOPA	19,990	43,917	9,794	34,123	5,361,622	268.22	122.09	(297)	(777)	(71,156)	(2,494)	(6,566)	(768,432)
DISTRICT II													
PIMA	7,101	14,958	3,842	11,116	1,876,486	264.26	125.45	(195)	(511)	(52,966)	(588)	(1,684)	(170,505)
DISTRICT III													
APACHE	131	293	94	199	33,743	257.58	115.16	3	10	397	1	(2)	(1,254)
COCONINO	270	572	150	422	69,438	257.18	121.40	(11)	(38)	(1,011)	(37)	(116)	(9,449)
NAVAJO	1,375	3,410	985	2,425	385,703	280.51	113.11	(60)	(169)	(16,669)	(52)	(172)	(11,180)
YAVAPAI	669	1,322	288	1,034	167,140	249.84	126.43	(6)	(2)	2,598	(58)	(162)	(14,346)
DISTRICT IV													
LA PAZ	259	577	189	388	67,508	260.65	117.00	(6)	(17)	(2,756)	(6)	(23)	(4,319)
MOHAVE	1,397	2,917	835	2,082	360,177	257.82	123.48	(31)	(56)	(8,149)	(89)	(283)	(29,013)
YUMA	1,139	2,521	525	1,996	305,855	268.53	121.32	(90)	(241)	(23,480)	(146)	(471)	(43,251)
DISTRICT V													
GILA	760	1,706	566	1,140	207,631	273.20	121.71	(11)	(36)	(5,354)	(81)	(231)	(24,200)
PINAL	1,890	4,262	1,135	3,127	504,487	266.92	118.37	9	45	2,368	(88)	(256)	(32,781)
DISTRICT VI													
COCHISE	1,026	2,118	532	1,586	268,306	261.51	126.68	(17)	(9)	(595)	(117)	(235)	(28,939)
GRAHAM	423	857	281	576	109,338	258.48	127.58	(2)	5	(1,326)	(54)	(141)	(15,589)
GREENLEE	47	98	22	76	12,219	259.98	124.68	7	17	1,863	(15)	(30)	(3,706)
SANTA CRUZ	251	543	104	439	66,990	266.89	123.37	(10)	(26)	(2,152)	(39)	(114)	(11,117)

1/EXCLUDES: PRIOR MONTH NET TOTALS OF 1,558 CASES; 3,739 RECIPIENTS; \$296,700.  
 1/GRANT DIVERSION TOTALS OF: 0 CASES;\$0.  
 ZERO PAY TOTALS OF 0 CASES; 0 RECIPIENTS.

	CURRENT MO. CASES	CURRENT MO. RECIP.	CURRENT MO. DOLLARS	PRIOR MO. CASES	PRIOR MO. RECIP.	PRIOR MO. DOLLARS
PASQUAYAOUI	257	742	\$79,066	11	35	3,382
WM APACHE	731	1,916	\$220,075	22	49	3,897
SALT RIVER	94	327	\$28,871	7	22	1,859
NAVAJO	0	0	\$0	0	0	0
HOPI	166	531	\$42,827	7	21	649
<b>TOTAL</b>	<b>1,248</b>	<b>3,516</b>	<b>\$370,839</b>	<b>47</b>	<b>127</b>	<b>\$9,787</b>

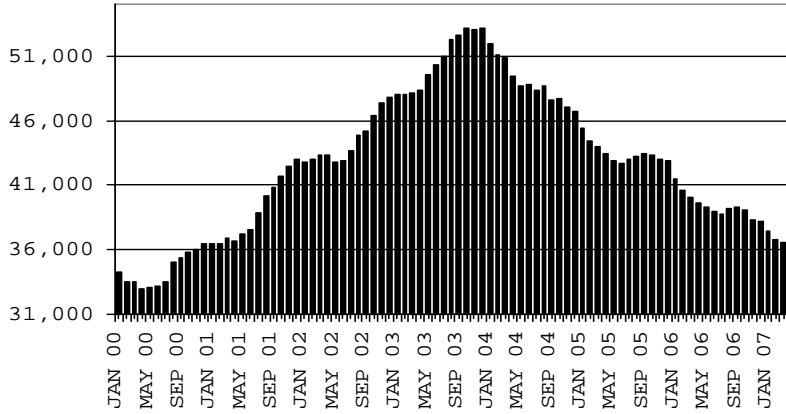
# TANF SUMMARY

TABLES 1, 1A, 1B, & 1C

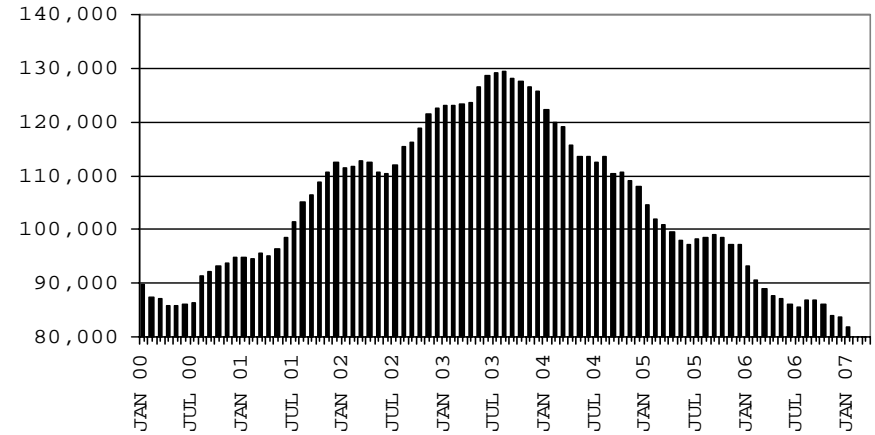
## COMPARISON OF CASES, RECIPIENTS, PAYMENTS & AVERAGE PAYMENTS

FOR 2000, 2001, 2002, 2003, 2004, 2005 & 2006

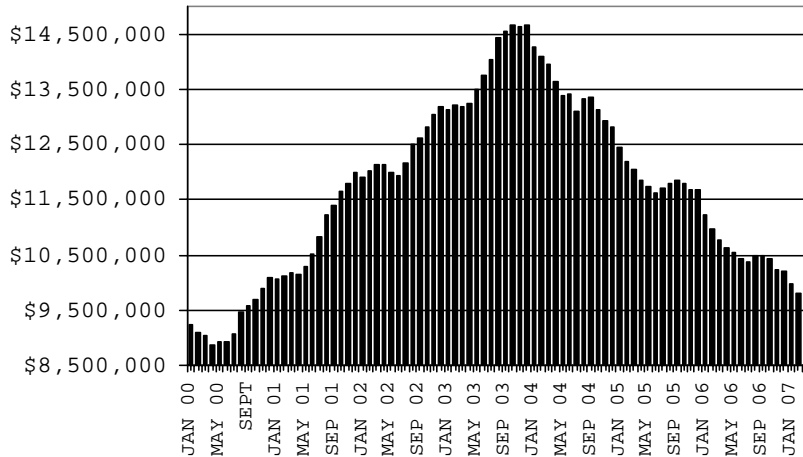
### CASES



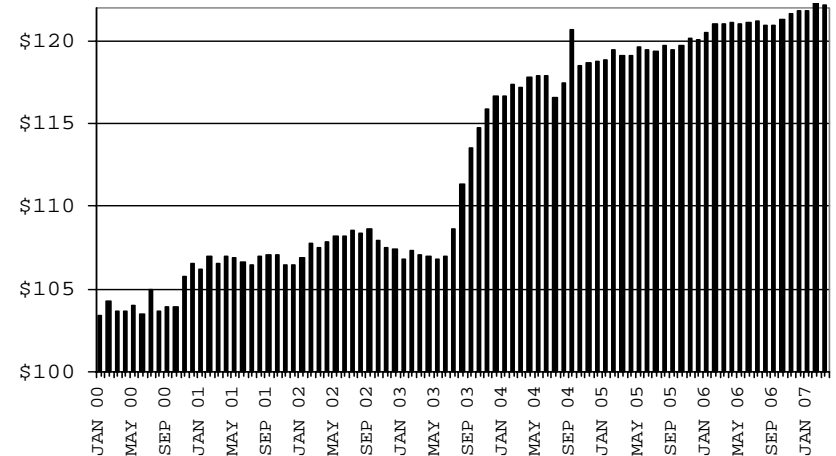
### RECIPIENTS



### PAYMENTS



### AVERAGE PAYMENTS PER RECIPIENT



**TABLE 1**  
**CASH ASSISTANCE: ARIZONA 1.**

	FEBRUARY 2007							CHANGE FROM			FEBRUARY 2006		
	FAMILIES (CASES)	(RECIP.)	ADULTS	CHILDREN	TOTAL PAYMENTS	AVERAGE PAYMENT/ CASE	AVERAGE PAYMENT/ RECIP.	JANUARY 2007			FEBRUARY 2006		
								FAMILIES (CASES)	PERSONS (RECIP.)	TOTAL PAYMENTS	FAMILIES (CASES)	PERSONS (RECIP.)	TOTAL PAYMENTS
ARIZONA	35,460	76,458	18,050	58,408	9,549,117	269.29	124.89	(658)	(1,651)	(162,902)	(3,793)	(10,284)	(1,147,487)
DISTRICT I													
MARICOPA	19,386	42,288	9,285	33,003	5,256,702	271.16	124.31	(287)	(739)	(69,730)	(2,483)	(6,553)	(764,239)
DISTRICT II													
PIMA	6,853	14,259	3,591	10,668	1,830,688	267.14	128.39	(173)	(451)	(46,346)	(572)	(1,633)	(162,767)
DISTRICT III													
APACHE	120	260	81	179	31,662	263.85	121.78	2	8	250	(3)	(14)	(1,443)
COCONINO	260	547	138	409	67,878	261.07	124.09	(10)	(32)	(611)	(33)	(94)	(8,582)
NAVAJO	1,302	3,132	858	2,274	360,346	276.76	115.05	(59)	(154)	(15,005)	(49)	(164)	(11,720)
YAVAPAI	647	1,280	278	1,002	164,420	254.13	128.45	5	27	3,513	(49)	(136)	(13,429)
DISTRICT IV													
LA PAZ	244	530	167	363	65,020	266.48	122.68	(3)	(18)	(1,812)	(7)	(25)	(3,066)
MOHAVE	1,338	2,721	760	1,961	346,115	258.68	127.20	(23)	(39)	(5,827)	(92)	(314)	(31,055)
YUMA	1,103	2,412	487	1,925	298,840	270.93	123.90	(76)	(207)	(20,751)	(136)	(447)	(41,224)
DISTRICT V													
GILA	714	1,567	491	1,076	194,827	272.87	124.33	(15)	(44)	(5,718)	(67)	(165)	(19,212)
PINAL	1,810	4,008	1,033	2,975	486,274	268.66	121.33	2	12	902	(90)	(264)	(33,415)
DISTRICT VI													
COCHISE	987	2,013	495	1,518	260,776	264.21	129.55	(19)	(27)	(2,003)	(111)	(223)	(30,302)
GRAHAM	407	822	261	561	107,022	262.95	130.20	(1)	15	(125)	(51)	(119)	(13,307)
GREENLEE	45	92	22	70	12,081	268.47	131.32	7	17	1,834	(16)	(35)	(3,705)
SANTA CRUZ	244	527	103	424	66,466	272.40	126.12	(8)	(19)	(1,473)	(34)	(98)	(10,021)

1/EXCLUDES: PRIOR MONTH NET TOTALS OF: 915 CASES; 2,299 RECIPIENTS; \$236,535.  
GRANT DIVERSION TOTALS OF: 0 CASES; \$0  
ZERO PAY TOTALS OF 0 CASES; 0 RECIPIENTS.

	CURRENT MO. CASES	CURRENT MO. RECIP.	CURRENT MO. DOLLARS	PRIOR MO. CASES	PRIOR MO. RECIP.	PRIOR MO. DOLLARS
PASQUAYUQUI	250	709	76,190	10	29	2,821
WM APACHE	681	1,702	199,668	18	34	2,435
SALT RIVER	94	327	28,871	7	22	1,859
NAVAJO	0	0	0	0	0	0
HOPAI	165	527	42,584	7	21	649
<b>TOTAL</b>	<b>1,190</b>	<b>3,265</b>	<b>347,313</b>	<b>42</b>	<b>106</b>	<b>7,764</b>

CASES WITH GRANT UNDER \$100 (SEE TABLE 1B).

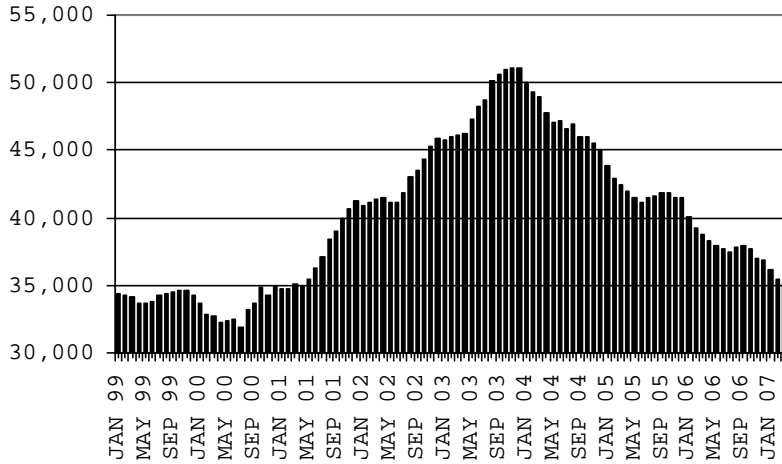
# CHART 1

## CASH ASSISTANCE PROGRAM

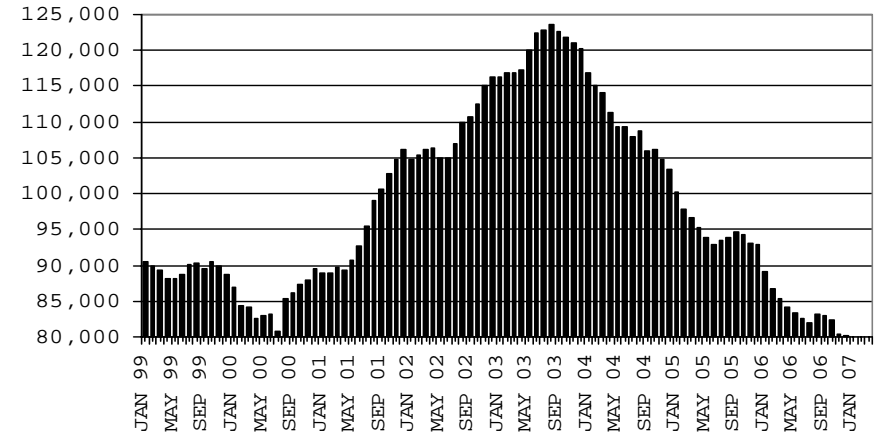
### COMPARISON OF CASES, RECIPIENTS, PAYMENTS & AVERAGE PAYMENTS

FOR 1999, 2000, 2001, 2002, 2003, 2004, 2005 & 2006

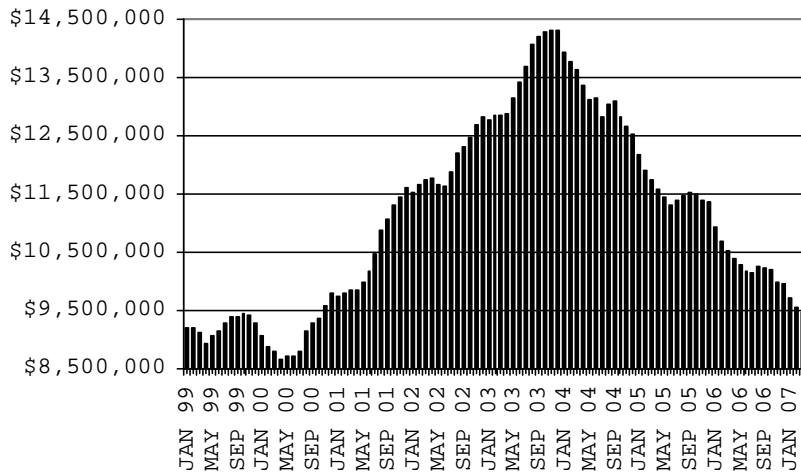
#### CASES



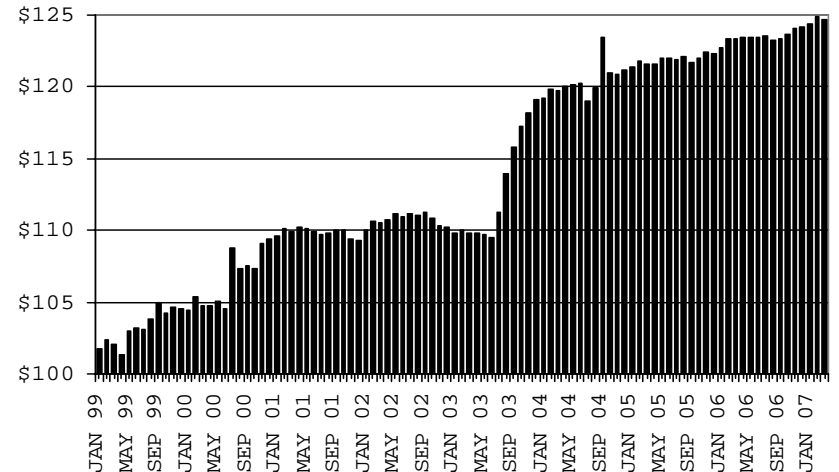
#### RECIPIENTS



#### PAYMENTS



#### AVERAGE PAYMENTS PER RECIPIENT



**TABLE 1A  
CA-UP**

**CASH ASSISTANCE UNEMPLOYED PARENT PROGRAM: ARIZONA 1**

	FEBRUARY 2007							CHANGE FROM			FEBRUARY 2006		
	FAMILIES (CASES)	PERSONS (RECIP.)	ADULTS	CHILDREN	TOTAL PAYMENTS	AVERAGE PAYMENT/ CASE	AVERAGE PAYMENT/ RECIP.	FAMILIES (CASES)	PERSONS (RECIP.)	TOTAL PAYMENTS	FAMILIES (CASES)	PERSONS (RECIP.)	TOTAL PAYMENTS
ARIZONA	535	2,041	886	1,155	196,731	367.72	96.39	(27)	(141)	(12,282)	(59)	(166)	(16,485)
DISTRICT I													
MARICOPA	214	792	315	477	78,039	364.67	98.53	(5)	(33)	(1,810)	(17)	(32)	(3,535)
DISTRICT II													
PIMA	97	370	159	211	36,018	371.32	97.35	(16)	(70)	(6,065)	(19)	(66)	(6,362)
DISTRICT III													
APACHE	5	21	9	12	1,855	371.00	88.33	0	1	139	1	5	183
COCONINO	3	12	6	6	1,043	347.67	86.92	0	(3)	(425)	(3)	(13)	(936)
NAVAJO	62	258	120	138	24,499	395.15	94.96	(1)	(13)	(1,562)	(1)	1	590
YAVAPAI	4	13	3	10	1,458	364.50	112.15	(2)	(6)	(301)	(2)	(7)	(411)
DISTRICT IV													
LA PAZ	6	22	12	10	2,029	338.17	92.23	(2)	(4)	(760)	(5)	(14)	(1,487)
MOHAVE	30	123	55	68	11,334	377.80	92.15	(3)	(15)	(2,316)	5	25	2,040
YUMA	12	50	22	28	5,054	421.17	101.08	(7)	(27)	(2,198)	(7)	(24)	(1,774)
DISTRICT V													
GILA	35	120	66	54	11,966	341.89	99.72	3	10	439	(9)	(48)	(4,717)
PINAL	44	179	83	96	15,773	358.48	88.12	7	22	2,515	(2)	11	807
DISTRICT VI													
COCHISE	16	58	24	34	5,820	363.75	100.34	4	16	1,970	6	21	1,860
GRAHAM	6	20	12	8	1,663	277.17	83.15	(4)	(14)	(1,419)	(4)	(18)	(1,978)
GREENLEE	0	0	0	0	0	0.00	0.00	0	0	0	0	0	0
SANTA CRUZ	1	3	0	3	180	180.00	60.00	(1)	(5)	(489)	(2)	(7)	(765)

1/EXCLUDES: PRIOR MONTH NET TOTALS OF: 55 CASES; 225 RECIPIENTS; \$21,690.  
GRANT DIVERSION TOTALS OF: 0 CASES; \$0.  
ZERO PAY TOTALS OF 0 CASES; 0 RECIPIENTS.

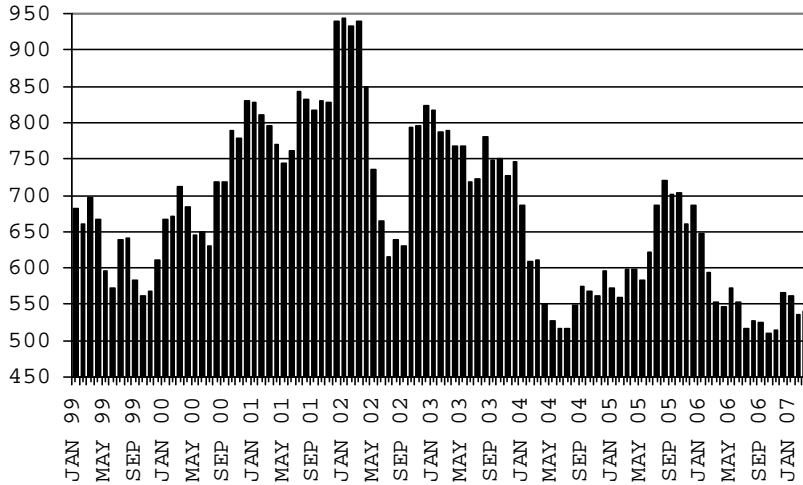
	CURRENT MO. CASES	CURRENT MO. RECIP.	CURRENT MO. DOLLARS	PRIOR MO. CASES	PRIOR MO. RECIP.	PRIOR MO. DOLLARS
PASQUAYAUQUI	7	33	2,876	1	6	561
WM APACHE	50	214	20,407	4	15	1,462
SALT RIVER	0	0	0	0	0	0
NAVAJO	0	0	0	0	0	0
HOPAI	1	4	243	0	0	0
<b>TOTAL</b>	<b>58</b>	<b>251</b>	<b>23,526</b>	<b>5</b>	<b>21</b>	<b>2,023</b>

CASES WITH GRANT UNDER \$100 (SEE TABLE 1C).

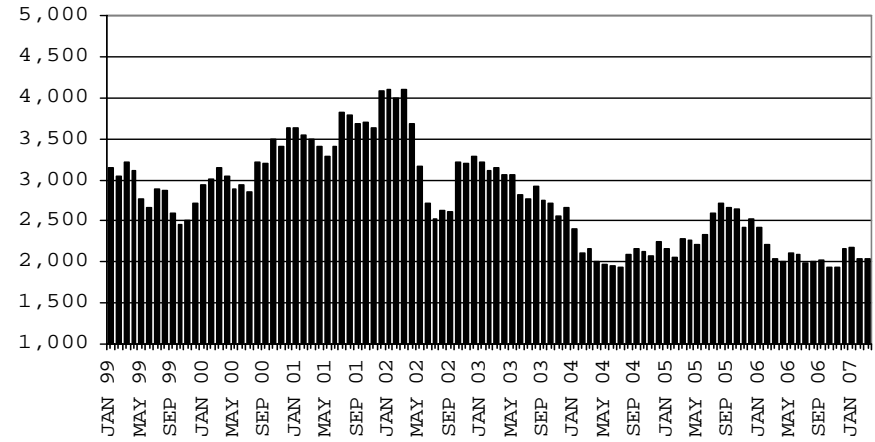
# CHART 1A

## CASH ASSISTANCE UNEMPLOYED PARENT PROGRAM COMPARISON OF CASES, RECIPIENTS, PAYMENTS & AVERAGE PAYMENTS FOR 1999, 2000, 2001, 2002, 2003, 2004, 2005 & 2006

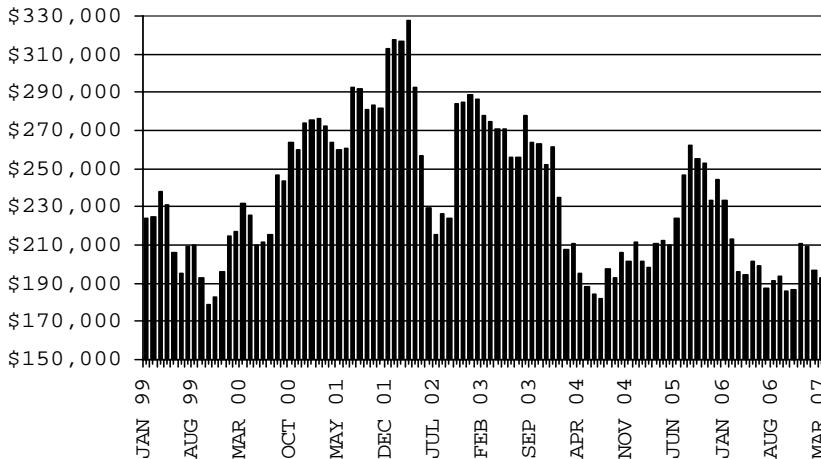
### CASES



### RECIPIENTS



### PAYMENTS



### AVERAGE PAYMENTS PER RECIPIENT

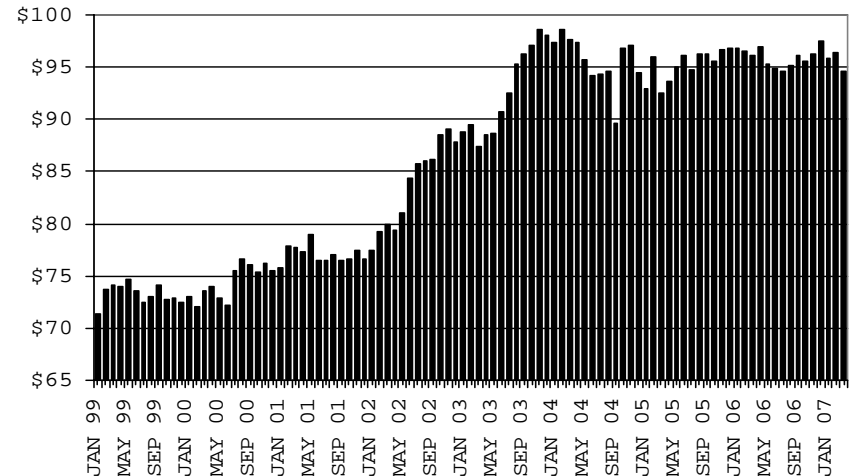


TABLE 1B 1/

CASH ASSISTANCE: ARIZONA  
CASES WITH GRANT UNDER \$100

	FEBRUARY 2007								CHANGE FROM			FEBRUARY 2006		
					AVERAGE		AVERAGE		JANUARY 2007			FEBRUARY 2006		
	FAMILIES (CASES)	PERSONS (RECIP.)	ADULTS	CHILDREN	TOTAL PAYMENTS	PAYMENT/ CASE	PAYMENT/ RECIP.	FAMILIES (CASES)	PERSONS (RECIP.)	TOTAL PAYMENTS	FAMILIES (CASES)	PERSONS (RECIP.)	TOTAL PAYMENTS	
ARIZONA	724	1,545	394	1,151	50,257	69.42	32.53	(32)	(18)	(3,171)	(5)	5	(3,848)	
DISTRICT I														
MARICOPA	389	833	192	641	26,837	68.99	32.22	(3)	1	434	11	43	(455)	
DISTRICT II														
PIMA	146	320	88	232	9,484	64.96	29.64	(7)	7	(568)	0	17	(1,597)	
DISTRICT III														
APACHE	6	12	4	8	226	37.67	18.83	1	1	8	3	7	6	
COCONINO	7	13	6	7	517	73.86	39.77	(1)	(3)	25	0	(2)	151	
NAVAJO	11	20	7	13	858	78.00	42.90	0	(2)	(102)	(1)	(6)	28	
YAVAPAI	18	29	7	22	1,262	70.11	43.52	(9)	(23)	(614)	(6)	(17)	(482)	
DISTRICT IV														
LA PAZ	9	25	10	15	459	51.00	18.36	(1)	5	(184)	6	16	234	
MOHAVE	28	65	18	47	2,637	94.18	40.57	(6)	(10)	(97)	(3)	(2)	(89)	
YUMA	24	59	16	43	1,961	81.71	33.24	(7)	(7)	(531)	(1)	9	(134)	
DISTRICT V														
GILA	10	16	7	9	751	75.10	46.94	1	(2)	(66)	(6)	(21)	(358)	
PINAL	36	75	19	56	2,440	67.78	32.53	1	14	(951)	6	5	1	
DISTRICT VI														
COCHISE	22	44	11	33	1,690	76.82	38.41	(3)	(1)	(582)	(13)	(36)	(517)	
GRAHAM	10	15	8	7	653	65.30	43.53	3	4	218	1	(4)	(304)	
GREENLEE	2	6	0	6	138	69.00	23.00	0	0	29	1	5	(1)	
SANTA CRUZ	6	13	1	12	344	57.33	26.46	(1)	(2)	(190)	(3)	(9)	(331)	

EXCLUDES: PRIOR MONTH NET TOTALS OF 0 CASES; 0 RECIPIENTS; \$0.





TABLE 1C 1/

CASH ASSISTANCE UNEMPLOYED PARENT PROGRAM: ARIZONA  
 CASES WITH GRANT UNDER \$100

	FEBRUARY 2007								CHANGE FROM			FEBRUARY 2006		
					AVERAGE	AVERAGE			JANUARY 2007			FEBRUARY 2006		
	FAMILIES (CASES)	PERSONS (RECIP.)	ADULTS	CHILDREN	TOTAL PAYMENTS	PAYMENT/ CASE	PAYMENT/ RECIP.			TOTAL PAYMENTS	FAMILIES (CASES)	PERSONS (RECIP.)	TOTAL PAYMENTS	
ARIZONA	9	27	12	15	538	59.78	19.93	0	5	(33)	(6)	(41)	(261)	
DISTRICT I														
MARICOPA	1	4	2	2	44	44.00	11.00	(2)	(6)	(50)	(5)	(24)	(203)	
DISTRICT II														
PIMA	5	9	4	5	296	59.20	32.89	1	3	13	3	(2)	221	
DISTRICT III														
APACHE	0	0	0	0	0	0.00	0.00	0	0	0	0	0	0	
COCONINO	0	0	0	0	0	0.00	0.00	0	0	0	(1)	(7)	(82)	
NAVAJO	0	0	0	0	0	0.00	0.00	0	0	0	(1)	(3)	(78)	
YAVAPAI	0	0	0	0	0	0.00	0.00	0	0	0	(1)	(2)	(24)	
DISTRICT IV														
LA PAZ	0	0	0	0	0	0.00	0.00	0	0	0	0	0	0	
MOHAVE	1	8	2	6	91	91.00	11.38	1	8	91	1	8	91	
YUMA	0	0	0	0	0	0.00	0.00	0	0	0	(2)	(9)	(119)	
DISTRICT V														
GILA	1	3	2	1	87	87.00	29.00	(1)	(3)	(107)	(1)	(5)	(87)	
PINAL	0	0	0	0	0	0.00	0.00	(1)	(3)	(98)	(2)	(8)	(174)	
DISTRICT VI														
COCHISE	1	3	2	1	20	20.00	6.67	1	3	20	1	3	20	
GRAHAM	0	0	0	0	0	0.00	0.00	0	0	0	0	0	0	
GREENLEE	0	0	0	0	0	0.00	0.00	0	0	0	0	0	0	
SANTA CRUZ	0	0	0	0	0	0.00	0.00	0	0	0	0	0	0	

6/8/2007

EXCLUDES: PRIOR MONTH NET TOTALS OF 14 CASES; 52 RECIPIENTS; \$611.

# CHART 1C

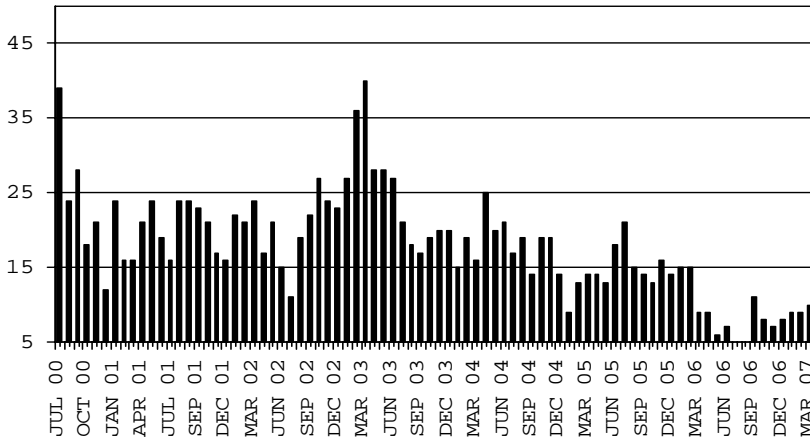
## CASH ASSISTANCE UNEMPLOYED PARENT PROGRAM

### CASES WITH GRANT UNDER \$100

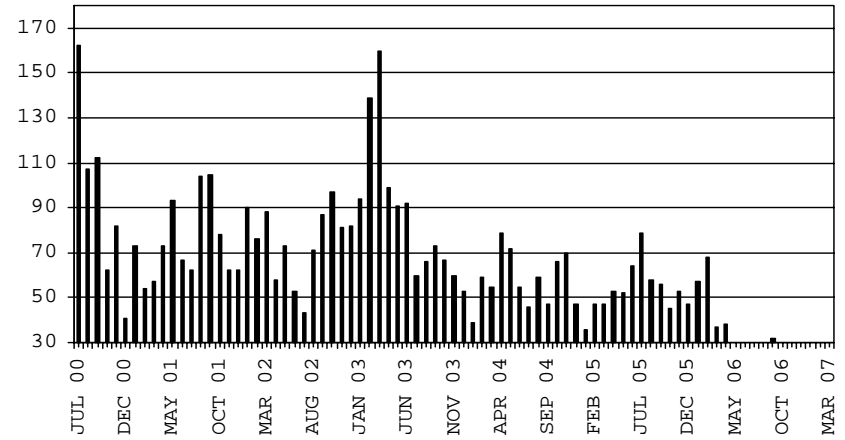
#### COMPARISON OF CASES, RECIPIENTS, PAYMENTS & AVERAGE PAYMENTS

FOR 2000, 2001, 2002, 2003, 2004, 2005 & 2006

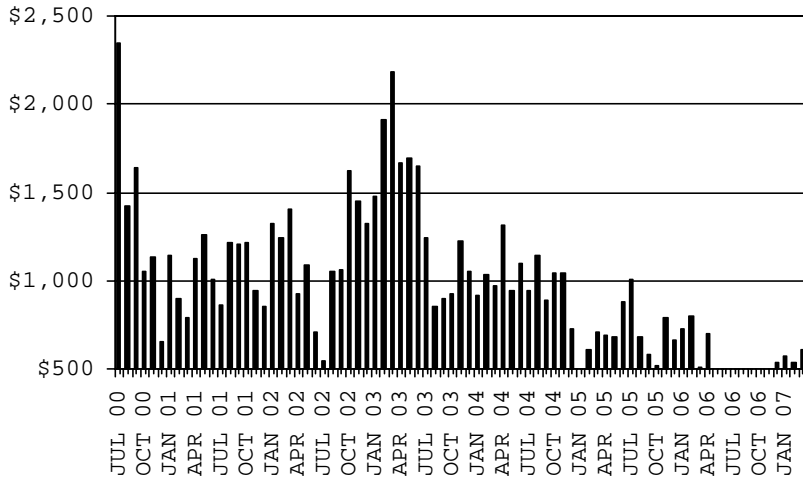
**CASES**



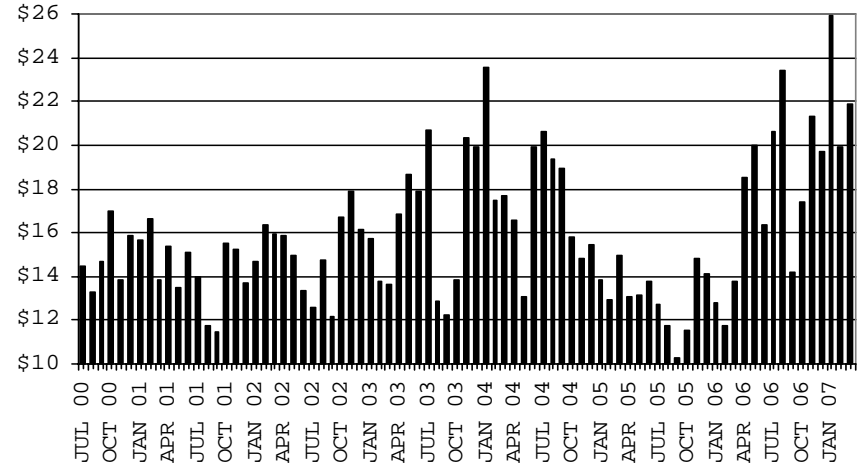
**RECIPIENTS**



**PAYMENTS**



**AVERAGE PAYMENTS PER RECIPIENT**



**TABLE 2**  
**GENERAL ASSISTANCE: ARIZONA 1,**

	CHANGE FROM											
	FEBRUARY 2007					JANUARY 2007			FEBRUARY 2006			
	NUMBER OF CASES	PERSONS (RECIP.)	TOTAL PAYMENTS	AVERAGE PAYMENT/ CASE	AVERAGE PAYMENT/ RECIP.	NUMBER OF CASES	PERSONS (RECIP.)	TOTAL PAYMENTS	NUMBER OF CASES	PERSONS (RECIP.)	TOTAL PAYMENTS	
ARIZONA	1,381	1,390	209,862	151.96	150.98	50	52	7,486	(743)	(748)	(116,340)	
DISTRICT I												
MARICOPA	615	616	93,459	151.97	151.72	63	64	10,054	(427)	(430)	(64,126)	
DISTRICT II												
PIMA	331	332	49,665	150.05	149.59	0	0	(443)	(191)	(192)	(31,480)	
DISTRICT III												
APACHE	19	22	2,991	157.42	135.95	1	1	70	12	15	1,975	
COCONINO	15	16	2,265	151.00	141.56	(6)	(6)	(843)	(20)	(19)	(2,683)	
NAVAJO	25	26	3,827	153.08	147.19	1	1	241	(19)	(20)	(2,969)	
YAVAPAI	66	66	10,580	160.30	160.30	4	4	827	(17)	(18)	(2,730)	
DISTRICT IV												
LA PAZ	7	8	1,206	172.29	150.75	1	2	233	(5)	(4)	(740)	
MOHAVE	77	77	12,067	156.71	156.71	(4)	(4)	(609)	(25)	(27)	(4,111)	
YUMA	51	51	7,015	137.55	137.55	(5)	(5)	(1,009)	8	8	304	
DISTRICT V												
GILA	107	108	16,020	149.72	148.33	(1)	(1)	(303)	(13)	(13)	(2,468)	
PINAL	23	23	2,816	122.43	122.43	(1)	(1)	(303)	(8)	(8)	(1,797)	
	84	85	13,204	157.19	155.34	0	0	0	(5)	(5)	(671)	
DISTRICT VI												
COCHISE	68	68	10,767	158.34	158.34	(4)	(4)	(732)	(46)	(48)	(7,312)	
GRAHAM	49	49	7,740	157.96	157.96	(2)	(2)	(451)	(38)	(40)	(5,993)	
GREENLEE	12	12	2,011	167.58	167.58	0	0	(65)	(3)	(3)	(454)	
SANTA CRUZ	0	0	0	#DIV/0!	#DIV/0!	(1)	(1)	(173)	(5)	(5)	(800)	
	7	7	1,016	145.14	145.14	(1)	(1)	(43)	0	0	(65)	

1/EXCLUDES: PRIOR MONTH NET TOTALS OF : 224 CASES; 226 RECIPIENTS; \$51,897.  
REFUGEE RESETTLEMENT PROGRAM: 114 CASES; 212 RECIPIENTS; \$28,812.

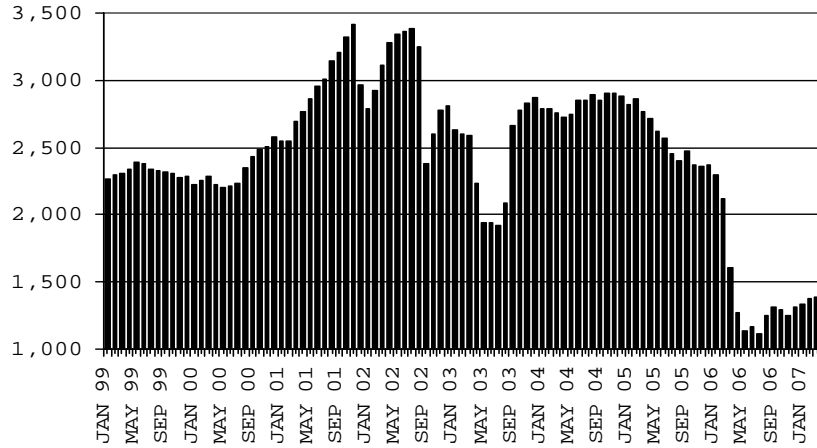
# CHART 2

## GENERAL ASSISTANCE PROGRAM

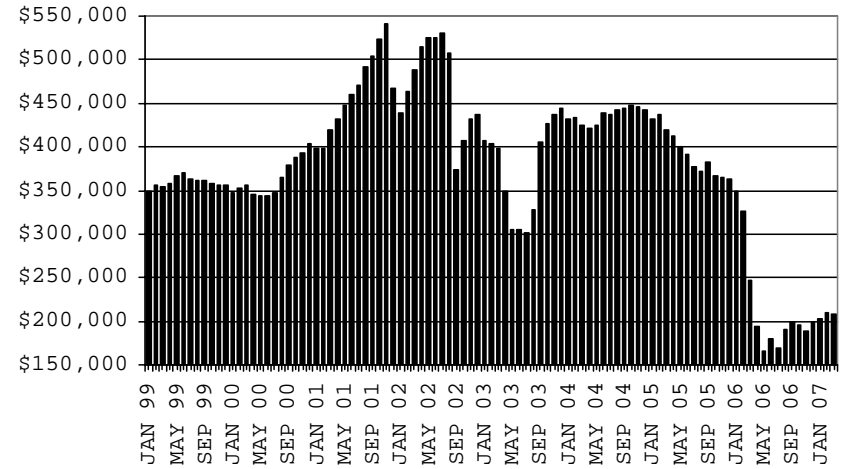
### COMPARISON OF CASES, PAYMENTS & AVERAGE PAYMENTS

FOR 1999, 2000, 2001, 2002, 2003, 2004, 2005 & 2006

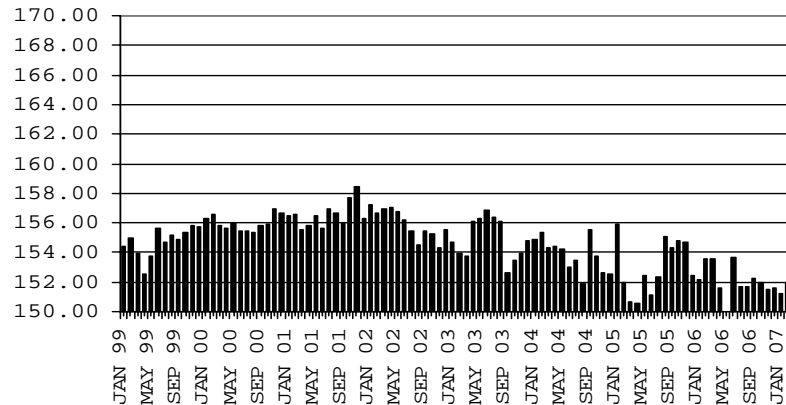
#### CASES



#### PAYMENTS



#### AVERAGE PAYMENT PER CASE



**TABLE 4**

**TUBERCULOSIS CONTROL: ARIZONA 1/**

	FEBRUARY 2007					CHANGE FROM					
						JANUARY 2007			FEBRUARY 2006		
	NUMBER OF CASES	PERSONS (RECIP.)	TOTAL PAYMENTS	AVERAGE PAYMENT/ CASE	AVERAGE PAYMENT/ RECIP.	NUMBER OF CASES	PERSONS (RECIP.)	TOTAL PAYMENTS	NUMBER OF CASES	PERSONS (RECIP.)	TOTAL PAYMENTS
ARIZONA	14	14	1,683	120.21	120.21	0	0	172	(3)	(3)	(641)
DISTRICT I											
MARICOPA	14	14	1,683	120.21	120.21	0	0	172	0	0	(219)
DISTRICT II											
PIMA	0	0	0	0.00	0.00	0	0	0	(1)	(1)	(173)
DISTRICT III	0	0	0	0.00	0.00	0	0	0	(1)	(1)	(108)
APACHE	0	0	0	0.00	0.00	0	0	0	0	0	0
COCONINO	0	0	0	0.00	0.00	0	0	0	0	0	0
NAVAJO	0	0	0	0.00	0.00	0	0	0	0	0	0
YAVAPAI	0	0	0	0.00	0.00	0	0	0	(1)	(1)	(108)
DISTRICT IV	0	0	0	0.00	0.00	0	0	0	(1)	(1)	(141)
LA PAZ	0	0	0	0.00	0.00	0	0	0	0	0	0
MOHAVE	0	0	0	0.00	0.00	0	0	0	(1)	(1)	(141)
YUMA	0	0	0	0.00	0.00	0	0	0	0	0	0
DISTRICT V	0	0	0	0.00	0.00	0	0	0	0	0	0
GILA	0	0	0	0.00	0.00	0	0	0	0	0	0
PINAL	0	0	0	0.00	0.00	0	0	0	0	0	0
DISTRICT VI	0	0	0	0.00	0.00	0	0	0	0	0	0
COCHISE	0	0	0	0.00	0.00	0	0	0	0	0	0
GRAHAM	0	0	0	0.00	0.00	0	0	0	0	0	0
GREENLEE	0	0	0	0.00	0.00	0	0	0	0	0	0
SANTA CRUZ	0	0	0	0.00	0.00	0	0	0	0	0	0

1/EXCLUDES: PRIOR MONTH NET TOTALS OF : 0 CASES; 0 RECIPIENTS; \$0.

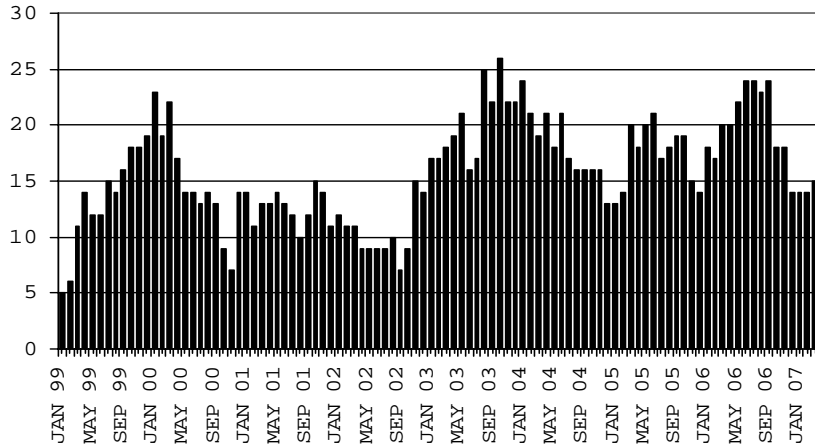
# CHART 4

## TUBERCULOSIS CONTROL PROGRAM

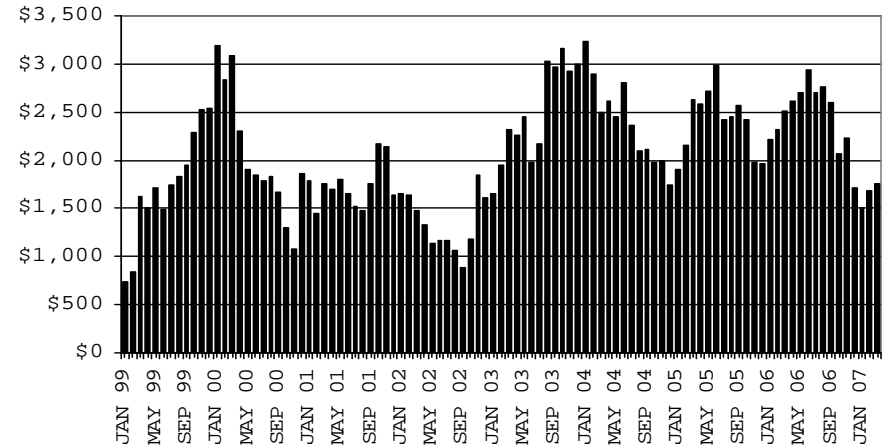
### COMPARISON OF CASES, PAYMENTS & AVERAGE PAYMENTS

FOR 1999, 2000, 2001, 2002, 2003, 2004, 2005 & 2006

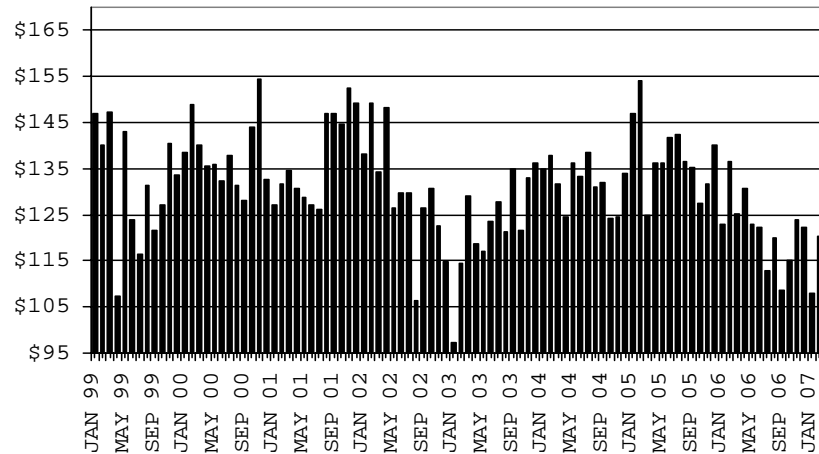
#### CASES



#### PAYMENTS



#### AVERAGE PAYMENT PER CASE



**TABLE 5**

**SUPPLEMENTAL PAYMENTS PROGRAM: ARIZONA 1,  
 BASED ON HB 2535 SPP IS SUSPENDED FROM JULY, 2003 THROUGH JUNE, 2004  
 CHANGE FROM**

	FEBRUARY 2007			JANUARY 2007		FEBRUARY 2006	
	NUMBER OF PAYMENTS	TOTAL PAYMENTS	AVERAGE PAYMENT	NUMBER OF PAYMENTS	TOTAL PAYMENTS	NUMBER OF PAYMENTS	TOTAL PAYMENTS
ARIZONA	0	0	0	0	0	0	0
DISTRICT I							
MARICOPA	0	0	0	0	0	0	0
DISTRICT II							
PIMA	0	0	0	0	0	0	0
DISTRICT III							
APACHE	0	0	0	0	0	0	0
COCONINO	0	0	0	0	0	0	0
NAVAJO	0	0	0	0	0	0	0
YAVAPAI	0	0	0	0	0	0	0
DISTRICT IV							
LA PAZ	0	0	0	0	0	0	0
MOHAVE	0	0	0	0	0	0	0
YUMA	0	0	0	0	0	0	0
DISTRICT V							
GILA	0	0	0	0	0	0	0
PINAL	0	0	0	0	0	0	0
DISTRICT VI							
COCHISE	0	0	0	0	0	0	0
GRAHAM	0	0	0	0	0	0	0
GREENLEE	0	0	0	0	0	0	0
SANTA CRUZ	0	0	0	0	0	0	0

1/EXCLUDES: PRIOR MONTH NET TOTALS OF : 0 CASES (PERSONS); \$0.  
 1/TABLE 5 IS BASED ON THE LOCATION OF THE OFFICE THAT PROCEEDS THE APPLICATION.



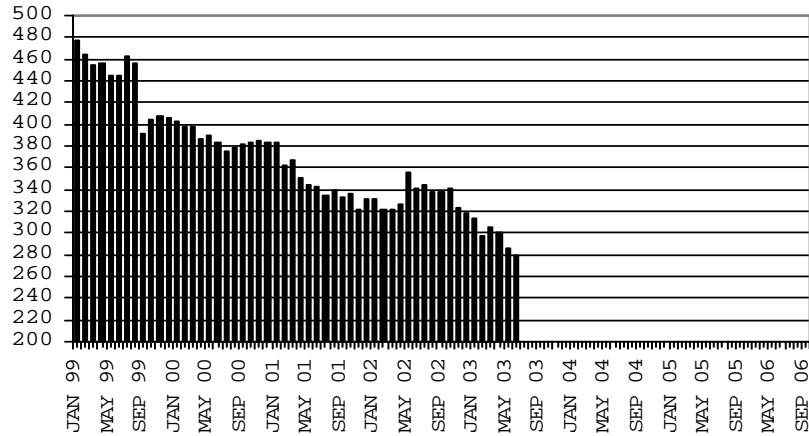
# CHART 5

## SUPPLEMENTAL PAYMENTS PROGRAM

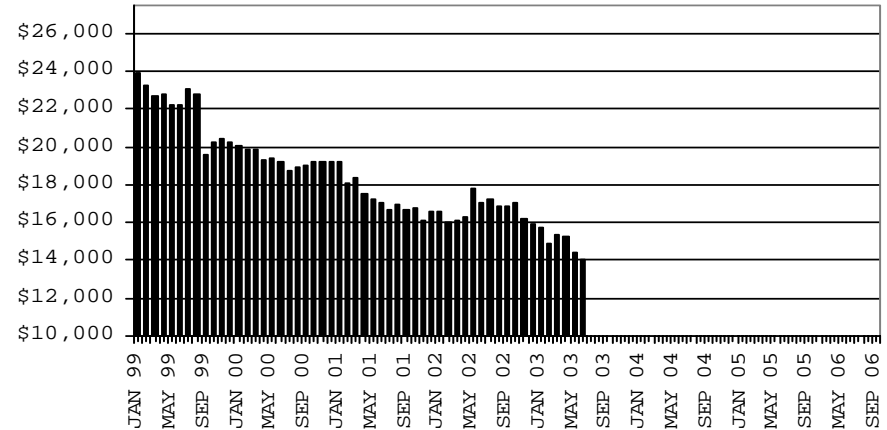
### COMPARISON OF CASES, PAYMENTS & AVERAGE PAYMENTS

FOR 1999, 2000, 2001, 2002, 2003, 2004, 2005 & 2006

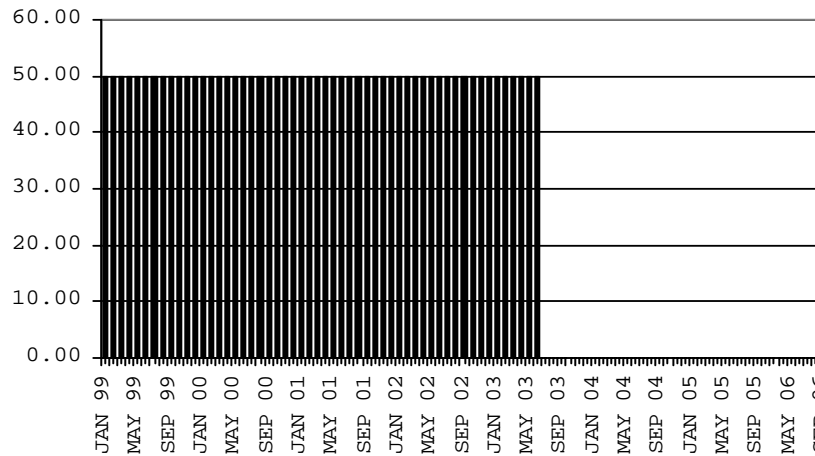
**CASES**



**PAYMENTS**



**AVERAGE PAYMENT PER CASE**



**TABLE 6**

**FOOD STAMP PROGRAM: ARIZONA 1/**

	CHANGE FROM										
	FEBRUARY 2007					JANUARY 2007			FEBRUARY 2006		
	HOUSEHOLDS	PERSONS	TOTAL COUPON ISSUANCE	AVERAGE ALLOT./ HOUSEHOLD	AVERAGE ALLOT./ PERSON	HOUSEHOLDS	PERSONS	TOTAL COUPON ISSUANCE	HOUSEHOLDS	PERSONS	TOTAL COUPON ISSUANCE
ARIZONA	216,555	530,707	51,480,702	237.73	97.00	(1,290)	(3,474)	(775,325)	(2,945)	(5,668)	620,237
DISTRICT I											
MARICOPA	106,817	261,379	25,913,775	242.60	99.14	(378)	(1,063)	(318,990)	(3,784)	(5,901)	(62,182)
DISTRICT II											
PIMA	38,819	89,870	8,694,986	223.99	96.75	(360)	(733)	(180,130)	125	42	128,755
DISTRICT III											
APACHE	6,127	19,174	1,763,565	287.83	91.98	(80)	(259)	(29,461)	67	10	61,927
COCONINO	5,046	15,200	1,383,939	274.26	91.05	(17)	(57)	(7,054)	(58)	(590)	(8,283)
NAVAJO	8,849	24,888	2,327,491	263.02	93.52	(50)	(86)	(5,846)	146	(139)	77,924
YAVAPAI	6,062	12,206	1,176,394	194.06	96.38	(26)	(29)	(9,231)	(108)	(291)	20,842
DISTRICT IV											
LA PAZ	1,260	2,793	278,888	221.34	99.85	(34)	(79)	(14,328)	65	168	20,112
MOHAVE	9,709	20,651	2,058,266	212.00	99.67	(20)	(39)	(21,316)	189	667	132,998
YUMA	8,744	23,403	2,064,225	236.07	88.20	(305)	(1,106)	(140,773)	298	388	66,593
DISTRICT V											
GILA	13,851	34,354	3,362,074	242.73	97.87	38	163	(18,198)	535	1,398	227,606
PINAL	3,245	7,745	769,241	237.05	99.32	(40)	(83)	(12,437)	(44)	(166)	1,658
DISTRICT VI											
COCHISE	10,606	26,609	2,592,833	244.47	97.44	78	246	(5,761)	579	1,564	225,948
COCHISE	11,271	26,789	2,457,099	218.00	91.72	(58)	(186)	(29,998)	(420)	(1,420)	(46,055)
GRAHAM	6,520	14,781	1,385,210	212.46	93.72	(7)	(50)	(21,709)	(179)	(637)	(19,370)
GREENLEE	2,045	4,904	455,241	222.61	92.83	(35)	(98)	(3,786)	(229)	(654)	(45,584)
SANTA CRUZ	264	576	53,689	203.37	93.21	(3)	2	(524)	(78)	(179)	(16,873)
	2,442	6,528	562,959	230.53	86.24	(13)	(40)	(3,979)	66	50	35,772

1/EXCLUDES: PRIOR MONTH NET TOTALS OF : 8,329 CASES; 21,338 RECIPIENTS; \$1,069,308.  
 AGED CANCELATIONS: 0 CASES; 0 RECIPIENTS; 0.  
 FS COUPON CONVERSIONS: 0 CASES; 0 RECIPIENTS; \$0.  
 FS REINSTATED: 0 CASES; \$0.  
 FS ZERO PAY: 0 CASES; 0 RECIPIENTS.

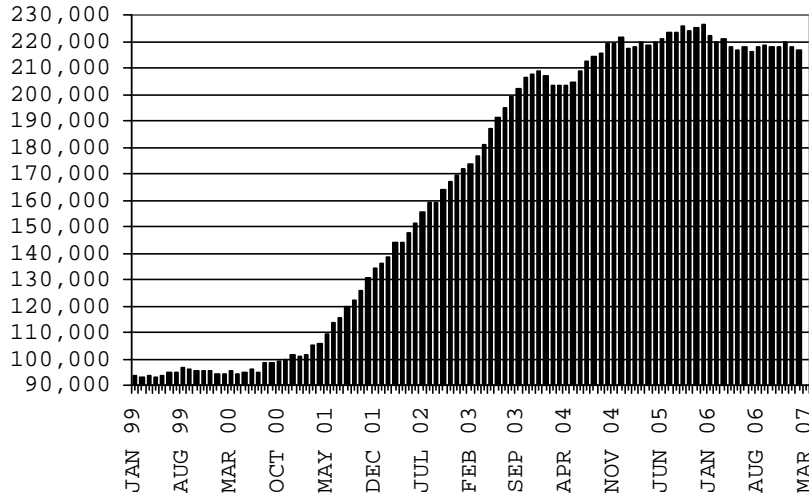
# CHART 6

## FOOD STAMPS PROGRAM

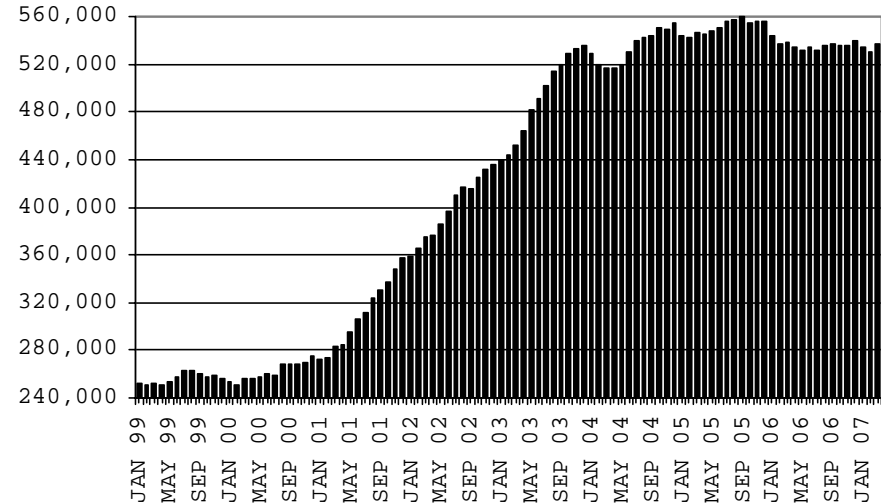
### COMPARISON OF HOUSEHOLDS, RECIPIENTS, PAYMENTS & AVERAGE PAYMENTS

FOR 1999, 2000, 2001, 2002, 2003, 2004, 2005 & 2006

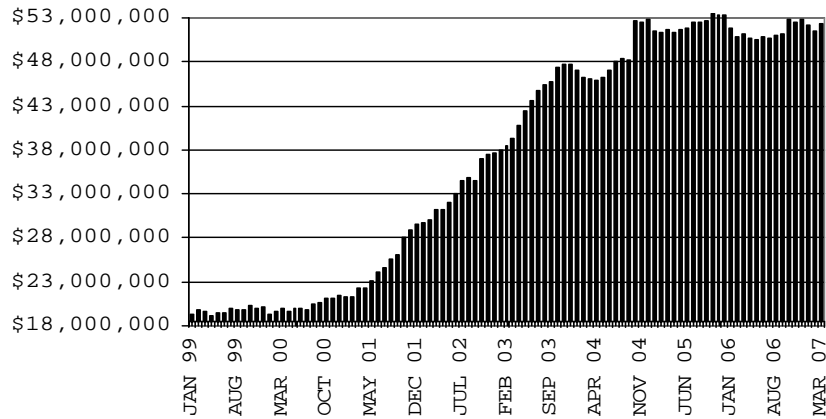
#### HOUSEHOLDS



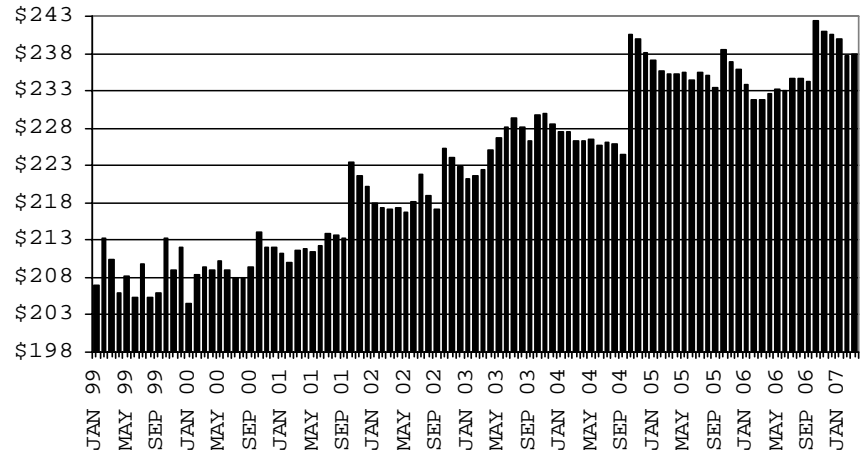
#### RECIPIENTS



#### TOTAL PAYMENTS



#### AVERAGE PAYMENT PER HOUSEHOLD



**TABLE 7A**  
**MEDICAL ASSISTANCE PROGRAM**  
**RECIPIENTS**

**FEBRUARY 2007**

	SOBRA WOMAN 133% FPL	SOBRA CHILD	ADULT W/O CHILD 100% FPL	FOSTER CARE	1931 36% FPL	FEDERAL EMERGENCY SERVICES	INFANTS	ADULT W/O CHILD 40% FPL	MEDICAL W/SPEND DOWN	SOBRA WOMAN 100% FPL	SOBRA CHILD 100% FPL	TRANSITIONAL MEDICAL T1 - T4	1931 100% FPL	YATI	OTHER	TOTAL CASES
ARIZONA	10,906	58,654	35,887	8,710	245,554	83,120	49,300	78,235	5,165	3,105	148,294	46,316	70,725	221	19,812	864,004
DISTRICT I																
MARICOPA	5,493	32,081	15,050	4,391	125,292	63,367	29,663	33,329	2,951	1,557	80,938	22,260	32,298	113	9,784	458,567
DISTRICT II																
PIMA	1,677	9,157	7,114	2,445	38,595	10,552	6,923	14,148	585	522	23,984	7,300	13,032	64	3,516	139,614
DISTRICT III																
APACHE	255	1,414	922	29	10,668	92	986	4,095	55	83	3,784	1,080	2,293	0	326	26,082
COCONINO	413	1,338	1,164	115	7,044	513	1,148	2,734	103	105	3,636	1,182	2,173	6	331	22,005
NAVAJO	346	2,149	1,343	111	11,165	332	1,334	4,343	161	106	4,160	1,539	2,680	5	465	30,239
YAVAPAI	453	1,786	1,640	349	5,189	1,602	1,349	2,452	258	97	3,727	1,573	2,183	12	833	23,503
DISTRICT IV																
LA PAZ	55	216	221	17	1,257	198	178	553	31	17	570	171	340	0	123	3,947
MOHAVE	471	2,056	1,774	218	8,731	998	1,593	3,939	297	143	5,767	1,600	3,318	2	1,005	31,912
YUMA	545	2,322	2,008	236	9,536	2,155	1,944	2,887	208	147	7,146	4,213	4,165	3	997	38,512
DISTRICT V																
GILA	132	772	534	81	3,877	162	452	1,767	83	26	1,501	549	903	3	249	11,091
PINAL	612	3,201	1,667	372	13,037	1,797	2,078	4,290	238	147	6,104	2,229	3,234	8	1,040	40,054
DISTRICT VI																
COCHISE	225	1,142	1,277	243	6,130	708	845	2,177	95	78	3,428	1,204	2,035	3	669	20,259
GRAHAM	118	441	424	63	2,133	67	346	766	41	25	1,045	660	640	2	108	6,879
GREENLEE	19	41	44	10	328	6	50	126	2	3	129	70	66	0	26	920
SANTA CRUZ	92	538	705	30	2,572	571	411	629	57	49	2,375	686	1,365	0	340	10,420

**TABLE 7B**

**MEDICAL ASSISTANCE PROGRAM**

**RECIPIENTS**

**CHANGE FROM**

**JANUARY 2007**

	SOBRA WOMAN 133% FPL	SOBRA CHILD	ADULT W/O CHILD 100% FPL	FOSTER CARE	1931 36% FPL	FEDERAL EMERGENCY SERVICES	INFANTS	ADULT W/O CHILD 40% FPL	MEDICAL W/SPEND DOWN	SOBRA WOMAN 100% FPL	SOBRA CHILD 100% FPL	TRANSITIONAL MEDICAL T1 - T4	1931 100% FPL	YATI	OTHER	TOTAL CASES
ARIZONA	63	133	(59)	24	(1,134)	433	(458)	255	(98)	(70)	565	(1,008)	265	6	118	(965)
DISTRICT I																
MARICOPA	(4)	160	(15)	15	(298)	396	(376)	114	0	(21)	466	(564)	181	3	83	140
DISTRICT II																
PIMA	21	(25)	(63)	3	(332)	79	(82)	0	(77)	(7)	103	(308)	126	1	(8)	(569)
DISTRICT III																
APACHE	(6)	(50)	25	(1)	(85)	(13)	(15)	11	(7)	(11)	38	(142)	1	0	6	(249)
COCONINO	17	0	7	6	(78)	10	10	43	(10)	(1)	(10)	(56)	34	(2)	4	(26)
NAVAJO	9	13	4	0	160	6	18	42	(5)	(16)	(100)	(90)	(21)	1	(16)	5
YAVAPAI	25	31	(1)	(8)	12	21	(10)	25	6	7	0	(61)	21	1	7	76
DISTRICT IV																
LA PAZ	12	4	(9)	1	(33)	(8)	(2)	5	0	(2)	(22)	30	(3)	0	5	(22)
MOHAVE	(4)	(6)	23	2	(67)	2	(12)	(10)	(9)	(3)	180	(90)	15	0	(5)	16
YUMA	28	(19)	(37)	8	(609)	(95)	(15)	(64)	13	(21)	(162)	521	(127)	0	28	(551)
DISTRICT V																
GILA	(7)	(22)	28	1	36	62	29	81	2	(2)	188	(99)	96	2	(5)	390
PINAL	(2)	(16)	10	(2)	(73)	(1)	(10)	(4)	11	2	13	(2)	8	(1)	(13)	(80)
	(5)	(6)	18	3	109	63	39	85	(9)	(4)	175	(97)	88	3	8	470
DISTRICT VI																
COCHISE	(16)	36	5	(2)	26	(19)	(18)	13	(10)	5	(72)	(65)	(15)	0	18	(114)
GRAHAM	(8)	13	9	0	45	(1)	3	(13)	1	2	(34)	(23)	4	0	(1)	(3)
GREENLEE	(1)	2	(6)	0	21	(2)	(4)	(1)	(7)	(2)	8	(7)	(5)	0	3	(1)
SANTA CRUZ	(3)	(4)	(29)	(1)	68	(5)	16	9	5	2	(18)	(54)	(42)	0	(1)	(57)

**TABLE 7C**  
**MEDICAL ASSISTANCE PROGRAM**  
**RECIPIENTS**

**CHANGE FROM**  
**FEBRUARY 2006**

	SOBRA WOMAN 133% FPL	SOBRA CHILD	ADULT W/O CHILD 100% FPL	FOSTER CARE	1931 36% FPL	FEDERAL EMERGENCY SERVICES	INFANTS	ADULT W/O CHILD 40% FPL	MEDICAL W/SPEND DOWN	SOBRA WOMAN 100% FPL	SOBRA CHILD 100% FPL	TRANSITIONAL MEDICAL T1 - T4	3E 1931 100% FPL	YATI	OTHER	TOTAL CASES
ARIZONA	209	555	(1,968)	313	(11,937)	225	388	(7,109)	(328)	164	2,791	(1,933)	(1,460)	46	1,069	(18,975)
DISTRICT I																
MARICOPA	(314)	203	(1,342)	163	(8,432)	435	(466)	(5,830)	(153)	162	1,114	(275)	(1,249)	10	412	(15,562)
DISTRICT II																
PIMA	83	53	(203)	64	(1,328)	262	394	(871)	(138)	3	1,122	(500)	132	17	146	(764)
DISTRICT III																
APACHE	20	23	72	(12)	(139)	(22)	(13)	154	(6)	(7)	(3)	(161)	36	0	47	(11)
COCONINO	69	(1)	(43)	6	(522)	(116)	(30)	(162)	(52)	(6)	(47)	(140)	17	3	46	(978)
NAVAJO	31	39	23	(20)	14	19	18	200	(27)	(7)	(183)	(56)	(153)	4	28	(70)
YAVAPAI	49	49	0	(6)	(255)	82	55	(129)	25	(13)	(27)	(158)	(118)	5	63	(378)
DISTRICT IV																
LA PAZ	16	(17)	(16)	2	(1)	(24)	(13)	(29)	3	11	39	33	18	0	13	35
MOHAVE	(10)	52	(103)	11	(612)	21	144	(196)	(56)	0	203	(362)	(28)	2	(10)	(944)
YUMA	71	(85)	(32)	41	(339)	(274)	50	51	32	(10)	247	70	104	0	116	42
DISTRICT V																
GILA	23	(49)	(19)	5	(244)	24	(6)	(72)	(3)	3	58	(35)	(14)	(1)	(16)	(346)
PINAL	140	415	(36)	58	560	(23)	217	102	29	14	399	(132)	13	4	166	1,926
DISTRICT VI																
COCHISE	4	(46)	(187)	4	(304)	(149)	(1)	(83)	(3)	10	(47)	(111)	(150)	0	52	(1,011)
GRAHAM	21	(11)	(25)	(1)	(211)	(8)	35	(173)	(9)	(13)	(83)	99	(76)	2	(14)	(467)
GREENLEE	(7)	(15)	0	0	(102)	0	(2)	(54)	(3)	1	(30)	0	(25)	0	1	(236)
SANTA CRUZ	13	(55)	(57)	(2)	(22)	(2)	6	(17)	33	16	29	(205)	33	0	19	(211)

# CHART 7

## MEDICAL ASSISTANCE PROGRAM COMPARISON OF RECIPIENTS FOR 1999, 2000, 2001, 2002, 2003, 2004, 2005 & 2006

### TOTAL RECIPIENTS

