

\*\*\*\* STATISTICAL BULLETIN \*\*\*\*  
ARIZONA DEPARTMENT OF ECONOMIC SECURITY  
FAMILY ASSISTANCE ADMINISTRATION  
BOX 6123, PHOENIX, ARIZONA 85005  
PHONE (602) 542-3678

MARCH 2007

THIS ISSUE OF THE STATISTICAL BULLETIN COMPARES MARCH 2007 DATA FOR EACH OF THE INDICATED PROGRAMS WITH THE INFORMATION FOR FEBRUARY 2007 AND MARCH 2006. STATEWIDE SUMMARIES OF ACTIVITY WITHIN EACH OF THE SPECIFIC PROGRAMS FOR THIS REPORT PERIOD ARE DISCUSSED BELOW. THE TABLES COMPARE CURRENT AND PRIOR MONTH DATA. DISTRICT AND COUNTY COMPARISONS ARE PROVIDED WITHIN THIS BULLETIN

CASH ASSISTANCE (CA)

COMPARING TO FEBRUARY 2007, MARCH 2007 CASES DECREASED BY 197 (0.56%) TO 35,263. RECIPIENTS DECREASED BY 584 (0.76%) TO 75,874. PAYMENTS DECREASED BY \$84,516 (0.89%) TO \$9,464,601. AVERAGE PAYMENT PER CASE DECREASED BY \$0.89 (0.33%) TO \$268.40. PAYMENT PER RECIPIENT DECREASED BY \$0.15 (0.12%) TO \$124.74.

COMPARING TO MARCH 2006, MARCH 2007 CASES DECREASED BY 3,453 (8.92%). RECIPIENTS DECREASED BY 9,417 (11.04%). TOTAL PAYMENTS DECREASED BY \$1,056,953 (10.05%). THE AVERAGE PAYMENT PER CASE DECREASED BY \$3.36 (1.24%). THE AVERAGE PAYMENT PER RECIPIENT INCREASED BY \$1.38 (1.23%).

CASH ASSISTANCE UNEMPLOYED PARENT PROGRAM (CA-UP)

COMPARING TO FEBRUARY 2007, MARCH 2007 CASES INCREASED BY 5 (0.93%) TO 540. RECIPIENTS INCREASED BY 0 (0.00%) TO 2,041. PAYMENTS DECREASED BY \$3,692 (1.88%) TO \$193,039. AVERAGE PAYMENT PER CASE DECREASED BY \$10.24 (2.79%) TO \$357.48. PAYMENT PER RECIPIENT DECREASED BY \$1.81 (1.88%) TO \$94.58.

COMPARING TO MARCH 2006, MARCH 2007 CASES DECREASED BY 14 (2.53%). RECIPIENTS INCREASED BY 0 (0.00%). TOTAL PAYMENTS DECREASED BY \$3,238 (1.65%). THE AVERAGE PAYMENT PER CASE INCREASED BY \$3.19 (0.90%). THE AVERAGE PAYMENT PER RECIPIENT DECREASED BY \$1.59 (1.65%).

CASH ASSISTANCE WITH GRANT UNDER \$100 (CA-MOE)

COMPARING TO FEBRUARY 2007, MARCH 2007 CASES INCREASED BY 36 (4.97%) TO 760. RECIPIENTS INCREASED BY 30 (1.94%) TO 1,575. PAYMENTS INCREASED BY \$3,730 (7.42%) TO \$53,987. AVERAGE PAYMENT PER CASE INCREASED BY \$1.62 (2.33%) TO \$71.04. AVERAGE PAYMENT PER RECIPIENT INCREASED BY \$1.75 (5.38%) TO \$34.28.

COMPARING TO MARCH 2006, MARCH 2007 CASES DECREASED BY 49 (6.06%). RECIPIENTS DECREASED BY 86 (5.18%). TOTAL PAYMENTS DECREASED BY \$5,654 (9.48%). THE AVERAGE PAYMENT PER CASE DECREASED BY \$2.68 (3.64%). THE AVERAGE PAYMENT PER RECIPIENT DECREASED BY \$1.63 (4.54%).

CASH ASSISTANCE UNEMPLOYED PARENT PROGRAM WITH GRANT UNDER \$100 (CA-UP-MOE) NEW PROGRAM STARTING 7/01

COMPARING TO FEBRUARY 2007, MARCH 2007 CASES INCREASED BY 1 (11.11%) TO 10. RECIPIENTS INCREASED BY 1 (3.70%) TO 28. PAYMENTS INCREASED BY \$75 (13.94%) TO \$613. AVERAGE PAYMENT PER CASE INCREASED BY \$1.52 (2.54%) TO \$61.30. PAYMENT PER RECIPIENT INCREASED BY \$1.96 (9.83%) TO \$21.89.

COMPARING TO MARCH 2006, MARCH 2007 CASES INCREASED BY 1 (11.11%). RECIPIENTS DECREASED BY 9 (1.67%). TOTAL PAYMENTS INCREASED BY \$103 (20.20%). THE AVERAGE PAYMENT PER CASE INCREASED BY \$4.63 (8.17%). THE AVERAGE PAYMENT PER RECIPIENT INCREASED BY \$8.11 (58.85%).

GENERAL ASSISTANCE (GA)

COMPARING TO FEBRUARY 2007, MARCH 2007 CASES INCREASED BY 4 (0.29%) TO 1,385. RECIPIENTS INCREASED BY 3 (0.22%) TO 1,393. PAYMENTS DECREASED BY \$913 (0.44%) TO \$208,949. AVERAGE PAYMENT PER CASE DECREASED BY \$1.09 (0.72%) TO \$150.87. AVERAGE PAYMENT PER RECIPIENT DECREASED BY \$0.98 (0.65%) TO \$150.00.

COMPARING TO MARCH 2006, MARCH 2007 CASES DECREASED BY 222 (13.81%). RECIPIENTS DECREASED BY 227 (14.01%). TOTAL PAYMENTS DECREASED BY \$37,789 (15.32%). THE AVERAGE PAYMENT PER CASE DECREASED BY \$2.67 (1.74%). THE AVERAGE PAYMENT PER RECIPIENT DECREASED BY \$2.31 (1.51%).

TUBERCULOSIS CONTROL PROGRAM (TC)

COMPARING TO FEBRUARY 2007, MARCH 2007 CASES INCREASED BY 1 (7.14%) TO 15. RECIPIENTS INCREASED BY 1 (7.14%) TO 15. PAYMENTS INCREASED BY \$79 (4.69%) TO \$1,762. AVERAGE PAYMENT PER CASE DECREASED BY \$2.74 (2.28%) TO \$117.47. AVERAGE PAYMENT PER RECIPIENT DECREASED BY \$2.74 (2.28%) TO \$117.47.

COMPARING TO MARCH 2006, MARCH 2007 CASES DECREASED BY 5 (25.00%). RECIPIENTS DECREASED BY 5 (25.00%). TOTAL PAYMENTS DECREASED BY \$743 (29.66%). THE AVERAGE PAYMENT PER CASE DECREASED BY \$7.78 (6.21%). THE AVERAGE PAYMENT PER RECIPIENT DECREASED BY \$7.78 (6.21%).

SUPPLEMENTAL PAYMENTS PROGRAM (SPP)

AS A RESULT OF ARIZONA'S OMNIBUS BUDGET RECONCILIATION BILL, HB 2535, THE SUPPLEMENTAL PAYMENT PROGRAM (SPP) IS BEING SUSPENDED EFFECTIVE JULY, 2003 THROUGH JUNE, 2004.

FOOD STAMP PROGRAM (FS)

COMPARING TO FEBRUARY 2007, MARCH 2007 FOOD STAMP HOUSEHOLDS INCREASED BY 3,638 (1.68%) TO 220,193. PERSONS RECEIVING FOOD STAMPS INCREASED BY 6,757 (1.27%) TO 537,464. TOTAL COUPON ISSUANCE INCREASED BY \$901,101 (1.75%) TO \$52,381,803. THE AVERAGE HOUSEHOLD ALLOTMENT INCREASED BY \$0.16 (0.07%) TO \$237.89. THE AVERAGE ALLOTMENT PER PERSON INCREASED BY \$0.46 (0.47%) TO \$97.46.

COMPARING TO MARCH 2006, MARCH 2007 FOOD STAMP HOUSEHOLDS DECREASED BY 509 (0.23%). PERSONS RECEIVING FOOD STAMPS DECREASED BY 791 (0.15%). TOTAL COUPON ISSUANCE INCREASED BY \$1,233,849 (2.41%). THE AVERAGE ALLOTMENT PER HOUSEHOLD INCREASED BY \$6.14 (2.65%). THE AVERAGE ALLOTMENT PER PERSON INCREASED BY \$2.43 (2.56%).

MEDICAL ASSISTANCE PROGRAM (MA) NEW TABLE INCLUDES PROP. 204 CATEGORIES

COMPARING TO FEBRUARY 2007, MARCH 2007 TOTAL RECIPIENTS TOTAL RECIPIENTS INCREASED BY 6,176 (0.71%). SOBRA WOMEN AT 140% FPL INCREASED BY 235 (2.15%). SOBRA CHILDREN INCREASED BY 576 (0.98%). ADULTS W/O CHILD AT 100% INCREASED BY 411 (1.15%). FOSTER CARE INCREASED BY 8 (0.09%). 1931 AT 36% FPL INCREASED BY 1,415 (0.58%). EMERGENCY SERVICES INCREASED BY 848 (1.02%). INFANTS INCREASED BY 413 (0.84%). ADULT W/O CHILD AT 140% INCREASED BY 915 (1.17%). MEDICAL W/SPEND DOWN INCREASED BY 143 (2.77%). SOBRA WOMAN AT 100% INCREASED BY 127 (4.09%). SOBRA CHILD AT 100% INCREASED BY 976 (0.66%). TRANSITIONAL MEDICAL DECREASED BY 542 (1.17%). 1931 AT 100% INCREASED BY 413 (0.58%). YATI INCREASED BY 1 (0.45%). ALL OTHER CATEGORIES INCREASED BY 237 (1.20%).

COMPARING TO MARCH 2006, MARCH 2007 TOTAL RECIPIENTS TOTAL RECIPIENTS DECREASED BY 12,246 (1.39%). SOBRA WOMEN AT 140% FPL INCREASED BY 185 (1.69%). SOBRA CHILDREN INCREASED BY 1,048 (1.80%). ADULTS W/O CHILD AT 100% DECREASED BY 1,410 (3.74%). FOSTER CARE INCREASED BY 295 (3.50%). 1931 AT 36% FPL DECREASED BY 9,597 (3.74%). EMERGENCY SERVICES INCREASED BY 629 (0.75%). INFANTS INCREASED BY 546 (1.11%). ADULT W/O CHILD AT 140% DECREASED BY 6,243 (7.31%). MEDICAL W/SPEND DOWN DECREASED BY 256 (4.60%). SOBRA WOMAN AT 100% INCREASED BY 205 (6.77%). SOBRA CHILD AT 100% INCREASED BY 4,090 (2.82%). TRANSITIONAL MEDICAL DECREASED BY 2,316 (4.82%). 1931 AT 100% DECREASED BY 848 (1.18%). YATI INCREASED BY 45 (25.42%). ALL OTHER CATEGORIES INCREASED BY 1,381 (7.40%).

## TANF SUMMARY

### TABLES 1, 1A, 1B, & 1C: ARIZONA 1

	MARCH 2007							CHANGE FROM			MARCH 2006		
	FAMILIES (CASES)	PERSONS (RECIP.)	ADULTS	CHILDREN	TOTAL PAYMENTS	AVERAGE	AVERAGE	FAMILIES (CASES)	PERSONS (RECIP.)	TOTAL PAYMENTS	FAMILIES (CASES)	PERSONS (RECIP.)	TOTAL PAYMENTS
						PAYMENT/ CASE	PAYMENT/ RECIP.						
ARIZONA	36,573	79,518	19,138	60,380	9,712,240	265.56	122.14	(155)	(553)	(84,403)	(3,515)	(9,512)	(1,065,742)
DISTRICT I													
MARICOPA	19,937	43,712	9,734	33,978	5,324,635	267.07	121.81	(53)	(205)	(36,987)	(2,276)	(6,004)	(700,787)
DISTRICT II													
PIMA	7,067	14,842	3,802	11,040	1,855,595	262.57	125.02	(34)	(116)	(20,891)	(577)	(1,593)	(170,813)
DISTRICT III													
APACHE	120	266	83	183	30,385	253.21	114.23	(11)	(27)	(3,358)	(12)	(40)	(3,297)
COCONINO	269	565	146	419	67,714	251.72	119.85	(1)	(7)	(1,724)	(24)	(83)	(6,756)
NAVAJO	1,379	3,416	976	2,440	387,580	281.06	113.46	4	6	1,877	(40)	(128)	(8,135)
YAVAPAI	665	1,312	285	1,027	165,436	248.78	126.09	(4)	(10)	(1,704)	(55)	(141)	(11,911)
DISTRICT IV													
LA PAZ	245	550	179	371	65,303	266.54	118.73	(14)	(27)	(2,205)	(14)	(36)	(5,143)
MOHAVE	1,387	2,890	822	2,068	355,776	256.51	123.11	(10)	(27)	(4,401)	(89)	(254)	(28,707)
YUMA	1,123	2,476	511	1,965	301,166	268.18	121.63	(16)	(45)	(4,689)	(141)	(452)	(41,719)
DISTRICT V													
GILA	755	1,664	556	1,108	202,815	268.63	121.88	(5)	(42)	(4,816)	(52)	(176)	(18,478)
PINAL	1,893	4,262	1,121	3,141	504,224	266.36	118.31	3	0	(263)	(62)	(179)	(23,844)
DISTRICT VI													
COCHISE	1,038	2,139	532	1,607	271,386	261.45	126.88	12	21	3,080	(62)	(126)	(12,184)
GRAHAM	402	793	262	531	102,169	254.15	128.84	(21)	(64)	(7,169)	(60)	(168)	(18,700)
GREENLEE	44	95	23	72	11,487	261.07	120.92	(3)	(3)	(732)	(18)	(36)	(5,025)
SANTA CRUZ	249	536	106	430	66,569	267.35	124.20	(2)	(7)	(421)	(33)	(96)	(10,243)

1/EXCLUDES: PRIOR MONTH NET TOTALS OF 1,686 CASES; 3,936 RECIPIENTS; \$332,222.  
 1/GRANT DIVERSION TOTALS OF: 0 CASES;\$0.  
 ZERO PAY TOTALS OF 0 CASES; 0 RECIPIENTS.

	CURRENT MO. CASES	CURRENT MO. RECIP.	CURRENT MO. DOLLARS	PRIOR MO. CASES	PRIOR MO. RECIP.	PRIOR MO. DOLLARS
PASQUAYAOUI	259	746	\$80,394	21	57	5,075
WM APACHE	741	1,943	\$223,681	27	80	5,098
SALT RIVER	90	304	\$26,874	2	6	169
NAVAJO	0	0	\$0	0	0	0
HOPI	163	502	\$41,116	8	19	818
<b>TOTAL</b>	<b>1,253</b>	<b>3,495</b>	<b>\$372,065</b>	<b>58</b>	<b>162</b>	<b>\$11,160</b>

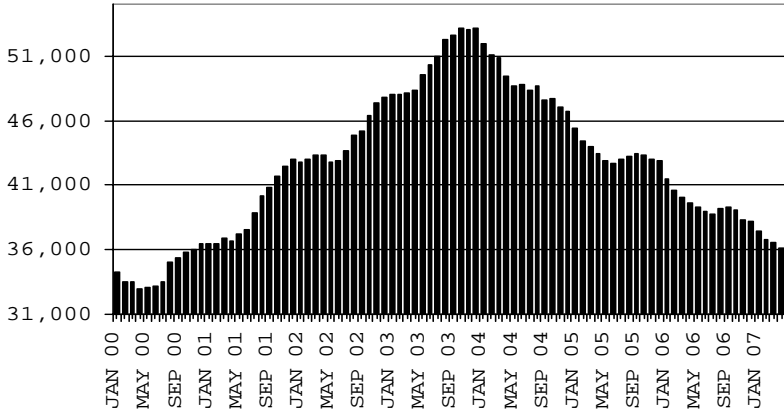
# TANF SUMMARY

TABLES 1, 1A, 1B, & 1C

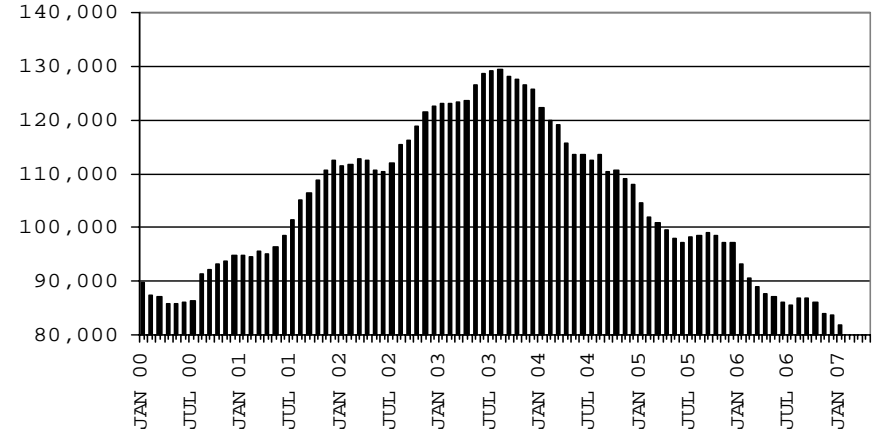
## COMPARISON OF CASES, RECIPIENTS, PAYMENTS & AVERAGE PAYMENTS

FOR 2000, 2001, 2002, 2003, 2004, 2005 & 2006

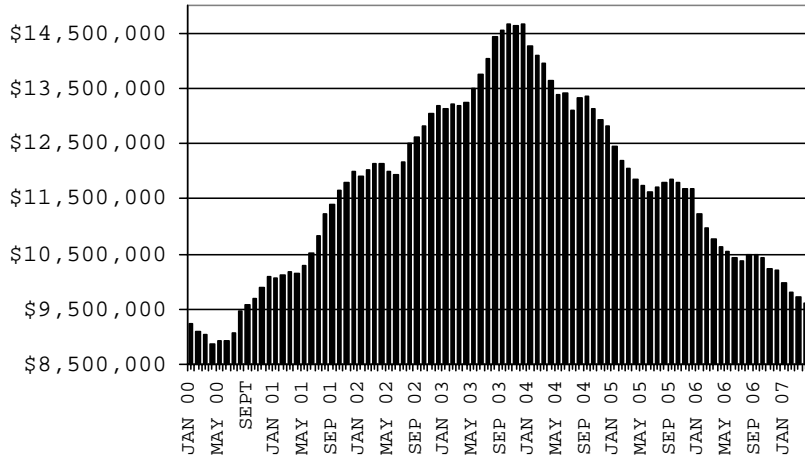
### CASES



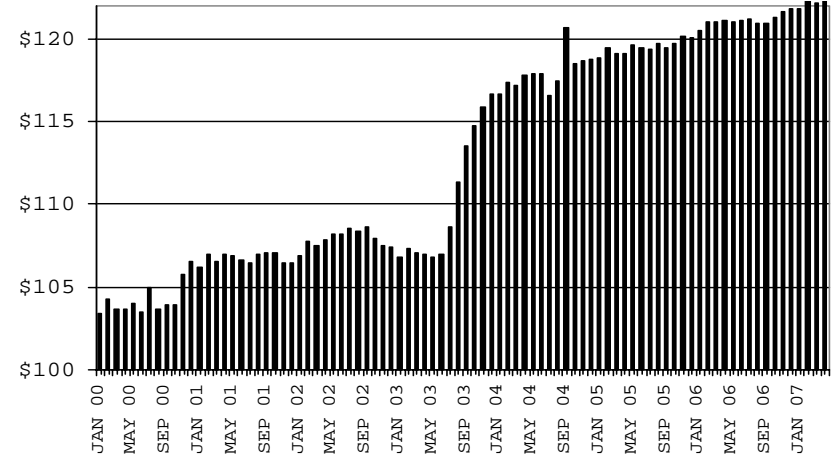
### RECIPIENTS



### PAYMENTS



### AVERAGE PAYMENTS PER RECIPIENT



**TABLE 1**  
**CASH ASSISTANCE: ARIZONA 1.**

	MARCH 2007							CHANGE FROM			FEBRUARY 2007			MARCH 2006		
	FAMILIES	(RECIP.)	ADULTS	CHILDREN	TOTAL	AVERAGE	AVERAGE	FAMILIES	PERSONS	TOTAL	FAMILIES	PERSONS	TOTAL			
	(CASES)				PAYMENTS	PAYMENT/ CASE	PAYMENT/ RECIP.	(CASES)	(RECIP.)	PAYMENTS	(CASES)	(RECIP.)	PAYMENTS			
ARIZONA	35,263	75,874	17,843	58,031	9,464,601	268.40	124.74	(197)	(584)	(84,516)	(3,453)	(9,417)	(1,056,953)			
DISTRICT I																
MARICOPA	19,305	42,041	9,221	32,820	5,218,292	270.31	124.12	(81)	(247)	(38,410)	(2,292)	(6,081)	(707,314)			
DISTRICT II																
PIMA	6,823	14,200	3,567	10,633	1,814,007	265.87	127.75	(30)	(59)	(16,681)	(537)	(1,490)	(160,810)			
DISTRICT III																
APACHE	108	236	73	163	28,690	265.65	121.57	(12)	(24)	(2,972)	(10)	(35)	(2,881)			
COCONINO	258	542	136	406	66,585	258.08	122.85	(2)	(5)	(1,293)	(23)	(75)	(6,280)			
NAVAJO	1,307	3,133	849	2,284	361,815	276.83	115.49	5	1	1,469	(24)	(84)	(5,538)			
YAVAPAI	640	1,262	271	991	161,529	252.39	127.99	(7)	(18)	(2,891)	(45)	(123)	(12,739)			
DISTRICT IV																
LA PAZ	233	505	159	346	62,187	266.90	123.14	(11)	(25)	(2,833)	(13)	(43)	(4,918)			
MOHAVE	1,320	2,679	734	1,945	341,295	258.56	127.40	(18)	(42)	(4,820)	(106)	(330)	(32,315)			
YUMA	1,089	2,382	478	1,904	294,851	270.75	123.78	(14)	(30)	(3,989)	(121)	(392)	(37,729)			
DISTRICT V																
GILA	707	1,516	478	1,038	189,949	268.67	125.30	(7)	(51)	(4,878)	(49)	(152)	(15,985)			
PINAL	1,803	3,977	1,010	2,967	485,241	269.13	122.01	(7)	(31)	(1,033)	(70)	(218)	(24,644)			
DISTRICT VI																
COCHISE	999	2,035	496	1,539	263,411	263.67	129.44	12	22	2,635	(59)	(126)	(14,902)			
GRAHAM	388	762	247	515	100,413	258.80	131.78	(19)	(60)	(6,609)	(57)	(146)	(15,898)			
GREENLEE	41	86	21	65	11,027	268.95	128.22	(4)	(6)	(1,054)	(20)	(43)	(5,444)			
SANTA CRUZ	242	518	103	415	65,309	269.87	126.08	(2)	(9)	(1,157)	(27)	(79)	(9,556)			

1/EXCLUDES: PRIOR MONTH NET TOTALS OF: 909 CASES; 2,216 RECIPIENTS; \$265,056.  
GRANT DIVERSION TOTALS OF: 0 CASES; \$0  
ZERO PAY TOTALS OF 0 CASES; 0 RECIPIENTS.

	CURRENT MO.	CURRENT MO.	CURRENT MO.	PRIOR MO.	PRIOR MO.	PRIOR MO.
	CASES	RECIP.	DOLLARS	CASES	RECIP.	DOLLARS
PASQUAYUQUI	250	704	76,939	20	52	4,691
WM APACHE	694	1,735	204,123	25	67	4,469
SALT RIVER	90	304	26,874	2	6	169
NAVAJO	0	0	0	0	0	0
HOPÍ	163	502	41,116	8	19	818
<b>TOTAL</b>	<b>1,197</b>	<b>3,245</b>	<b>349,052</b>	<b>55</b>	<b>144</b>	<b>10,147</b>

CASES WITH GRANT UNDER \$100 (SEE TABLE 1B).

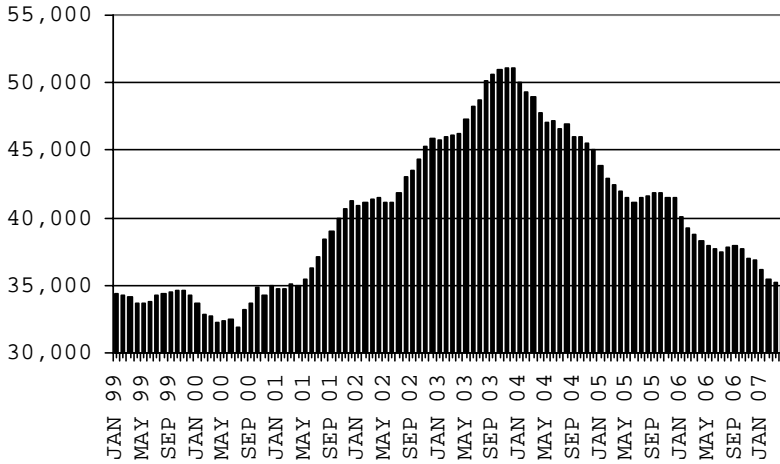
# CHART 1

## CASH ASSISTANCE PROGRAM

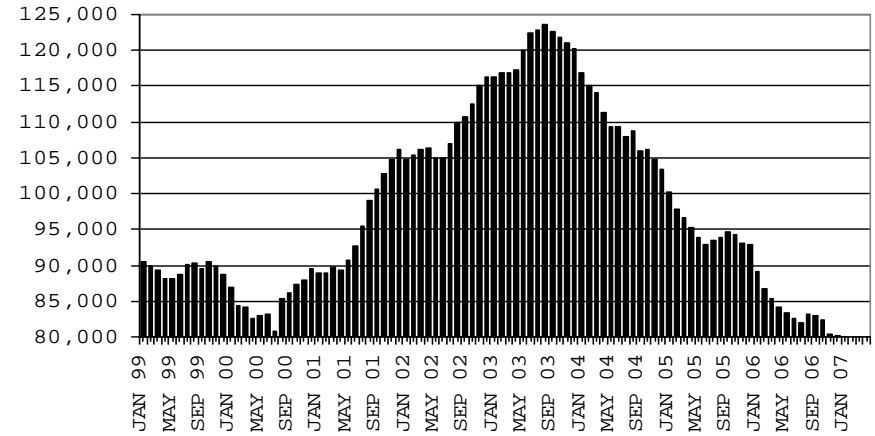
### COMPARISON OF CASES, RECIPIENTS, PAYMENTS & AVERAGE PAYMENTS

FOR 1999, 2000, 2001, 2002, 2003, 2004, 2005 & 2006

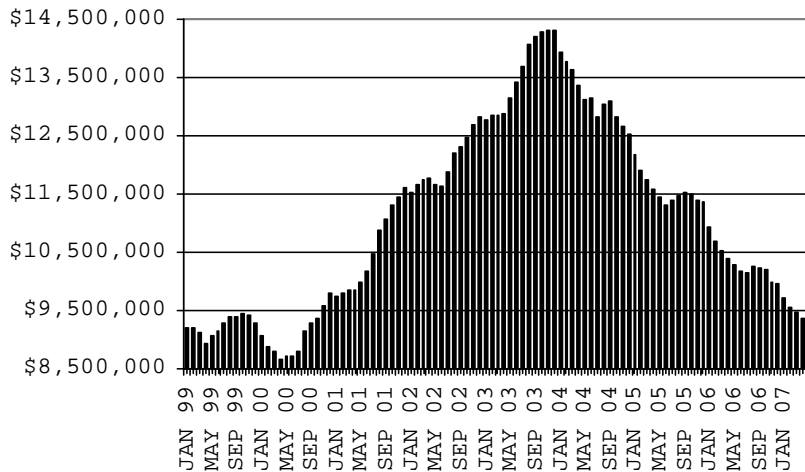
#### CASES



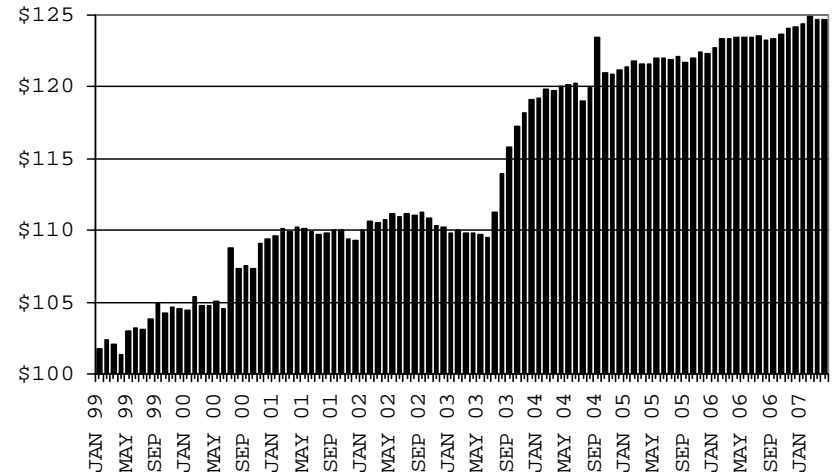
#### RECIPIENTS



#### PAYMENTS



#### AVERAGE PAYMENTS PER RECIPIENT



**TABLE 1A  
CA-UP**

**CASH ASSISTANCE UNEMPLOYED PARENT PROGRAM: ARIZONA 1**

	MARCH 2007							CHANGE FROM			MARCH 2006		
	FAMILIES (CASES)	PERSONS (RECIP.)	ADULTS	CHILDREN	TOTAL PAYMENTS	AVERAGE PAYMENT/ CASE	AVERAGE PAYMENT/ RECIP.	FAMILIES (CASES)	PERSONS (RECIP.)	TOTAL PAYMENTS	FAMILIES (CASES)	PERSONS (RECIP.)	TOTAL PAYMENTS
ARIZONA	540	2,041	882	1,159	193,039	357.48	94.58	5	0	(3,692)	(14)	0	(3,238)
DISTRICT I													
MARICOPA	219	800	313	487	78,188	357.02	97.74	5	8	149	11	65	6,877
DISTRICT II													
PIMA	87	321	140	181	30,227	347.44	94.17	(10)	(49)	(5,791)	(14)	(56)	(7,374)
DISTRICT III													
APACHE	4	15	7	8	1,370	342.50	91.33	(1)	(6)	(485)	(1)	(5)	(176)
COCONINO	2	7	4	3	584	292.00	83.43	(1)	(5)	(459)	(1)	(6)	(594)
NAVAJO	63	268	121	147	24,970	396.35	93.17	1	10	471	(6)	(20)	(2,050)
YAVAPAI	10	28	11	17	3,100	310.00	110.71	6	15	1,642	7	20	2,338
DISTRICT IV													
LA PAZ	9	34	17	17	2,885	320.56	84.85	3	12	856	0	6	(22)
MOHAVE	32	136	60	76	11,754	367.31	86.43	2	13	420	8	49	3,339
YUMA	12	49	21	28	4,613	384.42	94.14	0	(1)	(441)	(11)	(36)	(3,239)
DISTRICT V													
GILA	34	118	65	53	11,754	345.71	99.61	(1)	(2)	(212)	(6)	(30)	(2,678)
PINAL	44	178	86	92	15,255	346.70	85.70	0	(1)	(518)	(1)	10	311
DISTRICT VI													
COCHISE	16	60	25	35	5,895	368.44	98.25	0	2	75	6	26	2,795
GRAHAM	4	14	8	6	1,153	288.25	82.36	(2)	(6)	(510)	(7)	(26)	(2,944)
GREENLEE	1	3	2	1	347	347.00	115.67	1	3	347	1	3	347
SANTA CRUZ	3	10	2	8	944	314.67	94.40	2	7	764	0	0	(168)

1/EXCLUDES: PRIOR MONTH NET TOTALS OF: 49 CASES; 185 RECIPIENTS; \$19,431.  
GRANT DIVERSION TOTALS OF: 0 CASES; \$0.  
ZERO PAY TOTALS OF 0 CASES; 0 RECIPIENTS.

	CURRENT MO. CASES	CURRENT MO. RECIP.	CURRENT MO. DOLLARS	PRIOR MO. CASES	PRIOR MO. RECIP.	PRIOR MO. DOLLARS
PASQUA/YAQUI	9	42	3,455	1	5	384
WM APACHE	47	208	19,558	2	13	629
SALT RIVER	0	0	0	0	0	0
NAVAJO	0	0	0	0	0	0
HOPAI	0	0	0	0	0	0
<b>TOTAL</b>	<b>56</b>	<b>250</b>	<b>23,013</b>	<b>3</b>	<b>18</b>	<b>1,013</b>

CASES WITH GRANT UNDER \$100 (SEE TABLE 1C).

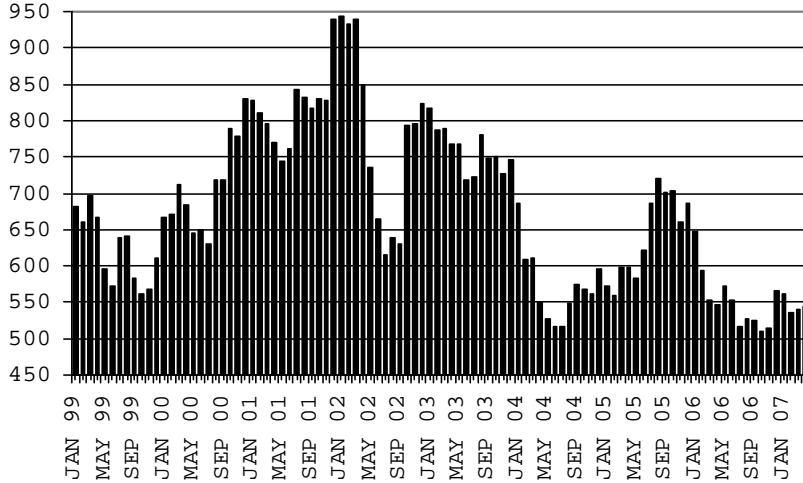
# CHART 1A

## CASH ASSISTANCE UNEMPLOYED PARENT PROGRAM

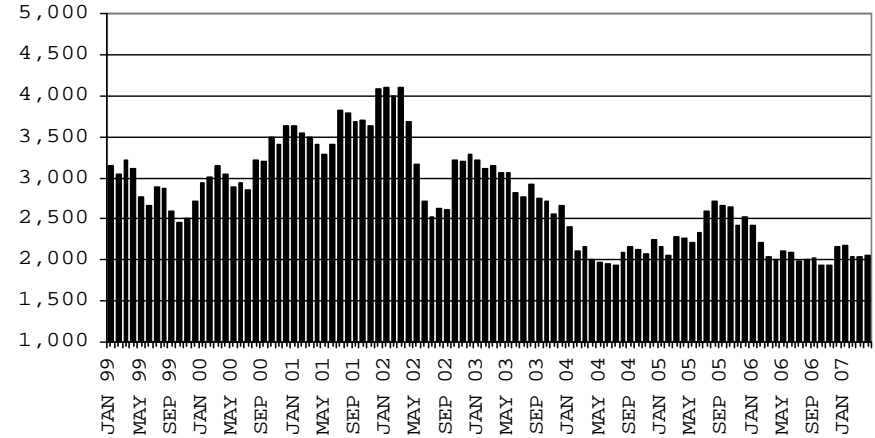
### COMPARISON OF CASES, RECIPIENTS, PAYMENTS & AVERAGE PAYMENTS

FOR 1999, 2000, 2001, 2002, 2003, 2004, 2005 & 2006

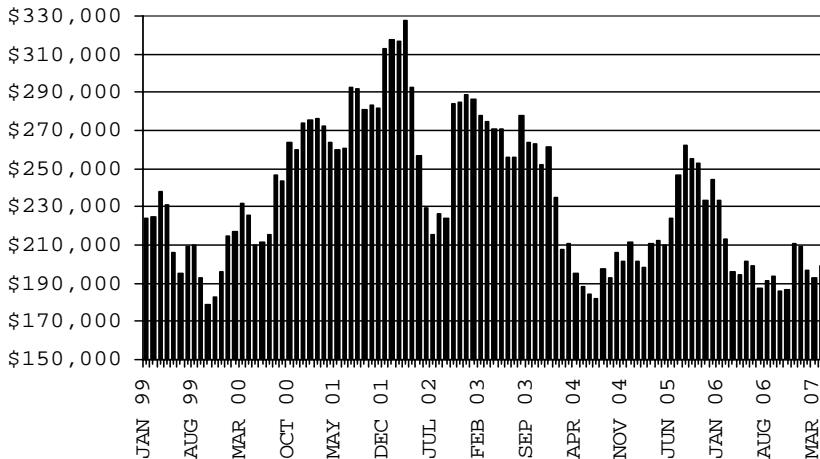
#### CASES



#### RECIPIENTS



#### PAYMENTS



#### AVERAGE PAYMENTS PER RECIPIENT

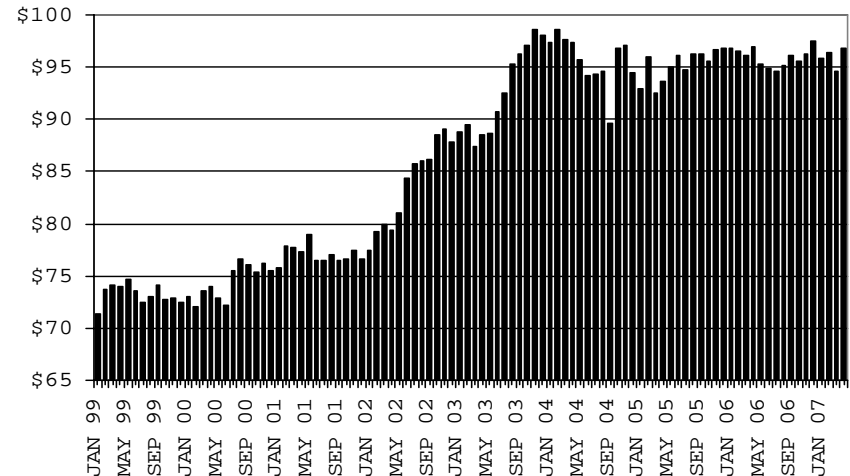


TABLE 1B 1/

CASH ASSISTANCE: ARIZONA  
 CASES WITH GRANT UNDER \$100

	MARCH 2007							CHANGE FROM			FEBRUARY 2007			MARCH 2006		
	FAMILIES (CASES)	PERSONS (RECIP.)	ADULTS	CHILDREN	TOTAL PAYMENTS	AVERAGE PAYMENT/ CASE	AVERAGE PAYMENT/ RECIP.	FAMILIES (CASES)	PERSONS (RECIP.)	TOTAL PAYMENTS	FAMILIES (CASES)	PERSONS (RECIP.)	TOTAL PAYMENTS			
	ARIZONA	760	1,575	399	1,176	53,987	71.04	34.28	36	30	3,730	(49)	(86)	(5,654)		
DISTRICT I																
MARICOPA	412	868	198	670	28,089	68.18	32.36	23	35	1,252	9	29	(145)			
DISTRICT II																
PIMA	154	317	94	223	11,183	72.62	35.28	8	(3)	1,699	(28)	(46)	(2,797)			
DISTRICT III																
APACHE	8	15	3	12	325	40.63	21.67	2	3	99	(1)	0	(240)			
COCONINO	9	16	6	10	545	60.56	34.06	2	3	28	0	(2)	118			
NAVAJO	9	15	6	9	795	88.33	53.00	(2)	(5)	(63)	(9)	(21)	(455)			
YAVAPAI	15	22	3	19	807	53.80	36.68	(3)	(7)	(455)	(17)	(38)	(1,510)			
DISTRICT IV																
LA PAZ	58	125	39	86	4,473	77.12	35.78	(3)	(24)	(584)	(2)	3	(827)			
MOHAVE	3	11	3	8	231	77.00	21.00	(6)	(14)	(228)	(1)	1	(203)			
YUMA	33	69	24	45	2,540	76.97	36.81	5	4	(97)	7	21	82			
DISTRICT V																
GILA	22	45	12	33	1,702	77.36	37.82	(2)	(14)	(259)	(8)	(19)	(706)			
PINAL	58	128	34	94	4,699	81.02	36.71	12	37	1,508	11	30	625			
DISTRICT VI																
GILA	12	21	9	12	971	80.92	46.24	2	5	220	1	(3)	44			
PINAL	46	107	25	82	3,728	81.04	34.84	10	32	1,288	10	33	581			
DISTRICT VI																
COCHISE	37	69	16	53	3,071	83.00	44.51	(3)	(9)	246	(12)	(41)	(423)			
GRAHAM	21	38	8	30	2,039	97.10	53.66	(1)	(6)	349	(11)	(32)	(118)			
GREENLEE	10	17	7	10	603	60.30	35.47	0	2	(50)	4	4	142			
SANTA CRUZ	2	6	0	6	113	56.50	18.83	0	0	(25)	1	4	72			
	4	8	1	7	316	79.00	39.50	(2)	(5)	(28)	(6)	(17)	(519)			

EXCLUDES: PRIOR MONTH NET TOTALS OF 0 CASES; 0 RECIPIENTS; \$0.



# CHART 1B

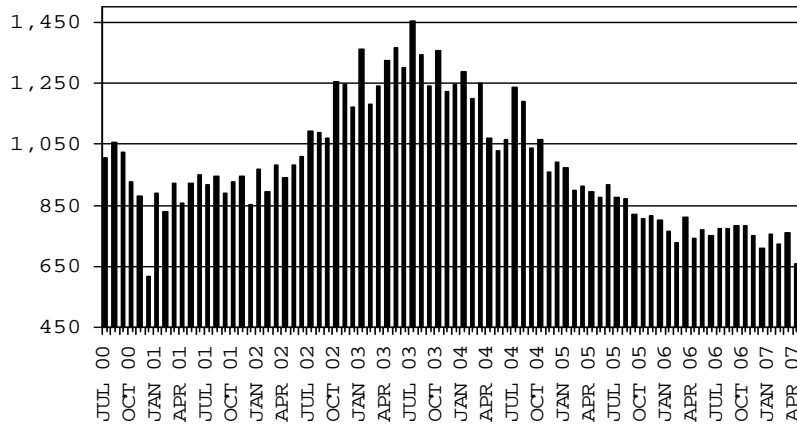
## CASH ASSISTANCE PROGRAM

### CASES WITH GRANT UNDER \$100

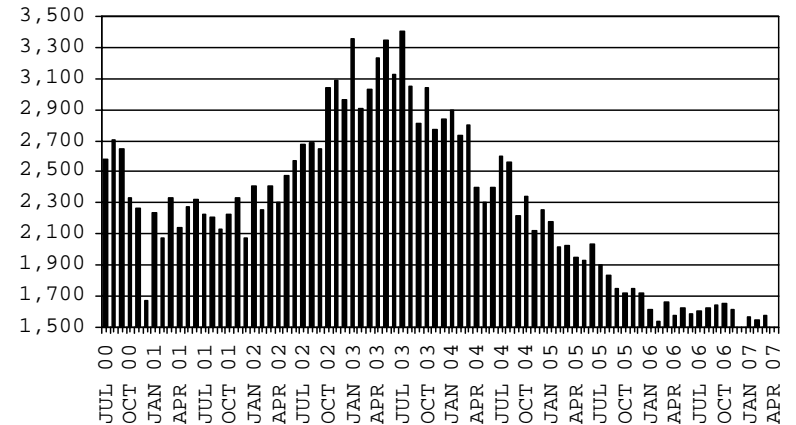
#### COMPARISON OF CASES, RECIPIENTS, PAYMENTS & AVERAGE PAYMENTS

FOR 2000, 2001, 2002, 2003, 2004, 2005 & 2006

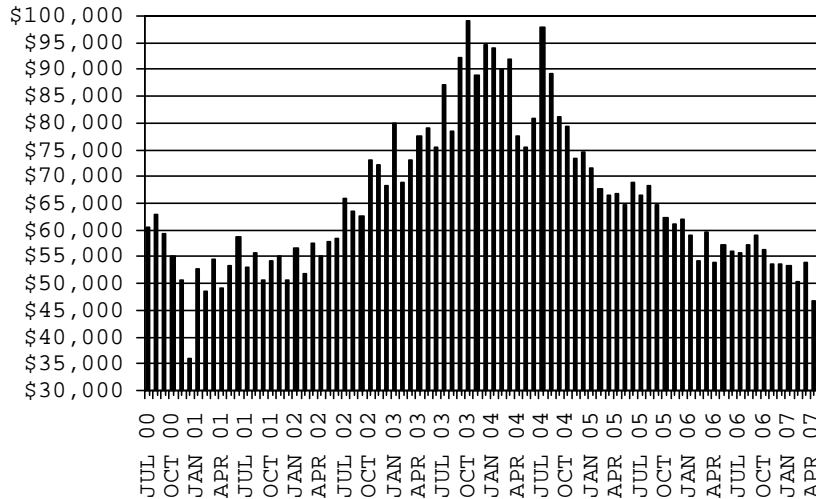
**CASES**



**RECIPIENTS**



**PAYMENTS**



**AVERAGE PAYMENTS PER RECIPIENT**

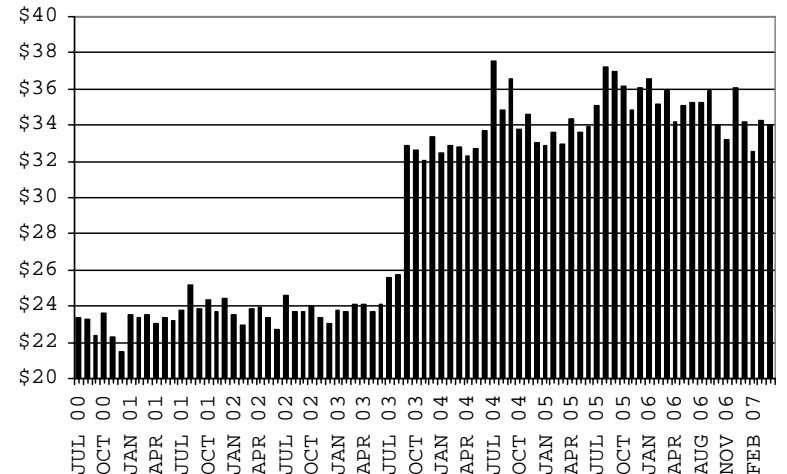


TABLE 1C 1/

CASH ASSISTANCE UNEMPLOYED PARENT PROGRAM: ARIZONA  
 CASES WITH GRANT UNDER \$100

	MARCH 2007							CHANGE FROM			MARCH 2006		
					AVERAGE	AVERAGE							
	FAMILIES (CASES)	PERSONS (RECIP.)	ADULTS	CHILDREN	TOTAL PAYMENTS	PAYMENT/ CASE	PAYMENT/ RECIP.	FAMILIES (CASES)	PERSONS (RECIP.)	TOTAL PAYMENTS	FAMILIES (CASES)	PERSONS (RECIP.)	TOTAL PAYMENTS
ARIZONA	10	28	14	14	613	61.30	21.89	1	1	75	1	(9)	103
DISTRICT I													
MARICOPA	1	3	2	1	66	66.00	22.00	0	(1)	22	(4)	(17)	(205)
DISTRICT II													
PIMA	3	4	1	3	178	59.33	44.50	(2)	(5)	(118)	2	(1)	168
DISTRICT III													
APACHE	0	0	0	0	0	0.00	0.00	0	0	0	(1)	(3)	(92)
COCONINO	0	0	0	0	0	0.00	0.00	0	0	0	0	0	0
NAVAJO	0	0	0	0	0	0.00	0.00	0	0	0	(1)	(3)	(92)
YAVAPAI	0	0	0	0	0	0.00	0.00	0	0	0	0	0	0
DISTRICT IV													
LA PAZ	2	6	4	2	187	93.50	31.17	1	(2)	96	1	1	142
MOHAVE	0	0	0	0	0	0.00	0.00	0	0	0	0	0	0
YUMA	2	6	4	2	187	93.50	31.17	1	(2)	96	2	6	187
	0	0	0	0	0	0.00	0.00	0	0	0	(1)	(5)	(45)
DISTRICT V													
GILA	2	9	4	5	141	70.50	15.67	1	6	54	1	5	49
PINAL	0	0	0	0	0	0.00	0.00	0	0	0	2	9	141
	0	0	0	0	0	0.00	0.00	0	0	0	(1)	(4)	(92)
DISTRICT VI													
COCHISE	2	6	3	3	41	20.50	6.83	1	3	21	2	6	41
GRAHAM	0	0	0	0	0	0.00	0.00	0	0	0	0	0	0
GREENLEE	0	0	0	0	0	0.00	0.00	0	0	0	0	0	0
SANTA CRUZ	0	0	0	0	0	0.00	0.00	0	0	0	0	0	0

EXCLUDES: PRIOR MONTH NET TOTALS OF 32 CASES; 109 RECIPIENTS; \$1,588.

6/18/2007

# CHART 1C

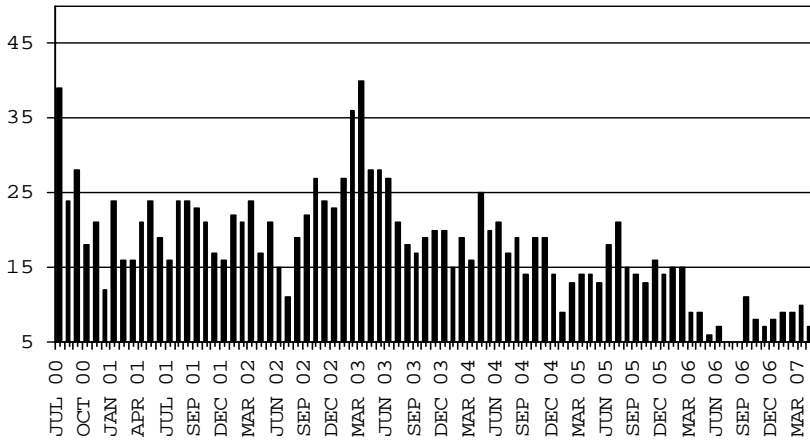
## CASH ASSISTANCE UNEMPLOYED PARENT PROGRAM

### CASES WITH GRANT UNDER \$100

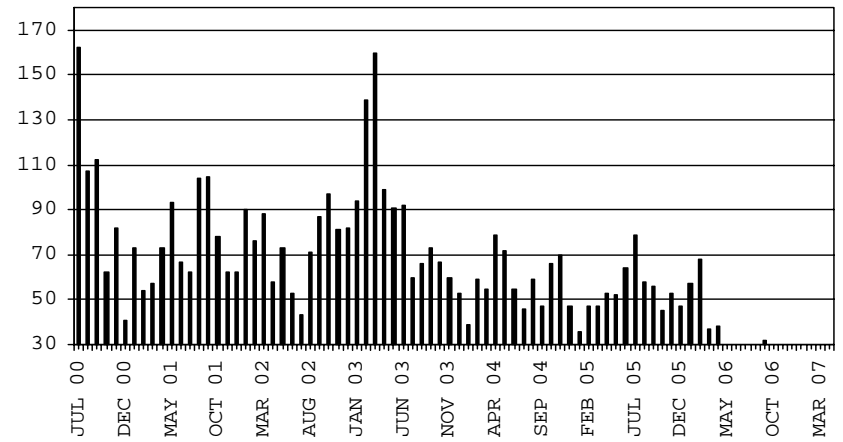
#### COMPARISON OF CASES, RECIPIENTS, PAYMENTS & AVERAGE PAYMENTS

FOR 2000, 2001, 2002, 2003, 2004, 2005 & 2006

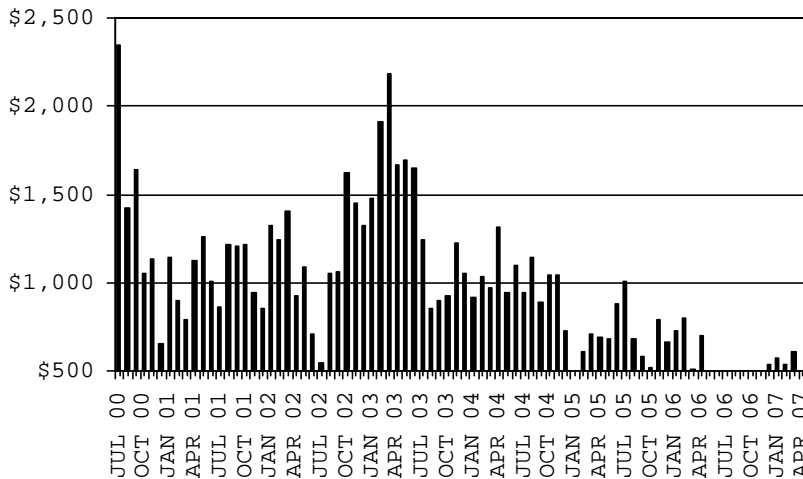
**CASES**



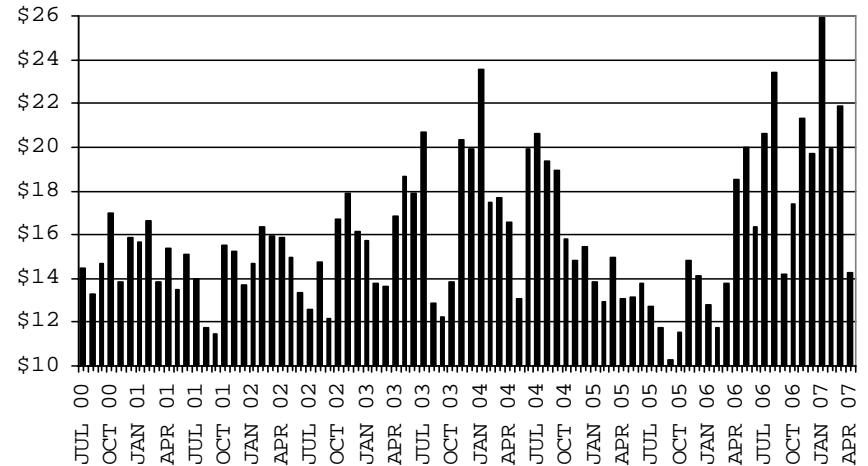
**RECIPIENTS**



**PAYMENTS**



**AVERAGE PAYMENTS PER RECIPIENT**



**TABLE 2**  
**GENERAL ASSISTANCE: ARIZONA 1,**

	CHANGE FROM											
	MARCH 2007					FEBRUARY 2007			MARCH 2006			
	NUMBER OF CASES	PERSONS (RECIP.)	TOTAL PAYMENTS	AVERAGE PAYMENT/ CASE	AVERAGE PAYMENT/ RECIP.	NUMBER OF CASES	PERSONS (RECIP.)	TOTAL PAYMENTS	NUMBER OF CASES	PERSONS (RECIP.)	TOTAL PAYMENTS	
ARIZONA	1,385	1,393	208,949	150.87	150.00	4	3	(913)	(222)	(227)	(37,789)	
DISTRICT I												
MARICOPA	586	587	88,956	151.80	151.54	(29)	(29)	(4,503)	(188)	(190)	(28,072)	
DISTRICT II												
PIMA	357	358	53,161	148.91	148.49	26	26	3,496	(41)	(42)	(8,252)	
DISTRICT III												
APACHE	18	20	2,758	153.22	137.90	(1)	(2)	(233)	12	14	1,915	
COCONINO	17	18	2,679	157.59	148.83	2	2	414	(13)	(12)	(1,445)	
NAVAJO	30	31	4,678	155.93	150.90	5	5	851	(5)	(6)	(821)	
YAVAPAI	64	64	10,229	159.83	159.83	(2)	(2)	(351)	(5)	(7)	(818)	
DISTRICT IV												
LA PAZ	8	9	1,379	172.38	153.22	1	1	173	3	4	579	
MOHAVE	78	78	11,843	151.83	151.83	1	1	(224)	7	5	546	
YUMA	51	51	7,149	140.18	140.18	0	0	134	21	21	2,414	
DISTRICT V												
GILA	112	113	16,327	145.78	144.49	5	5	307	13	13	916	
PINAL	28	28	3,420	122.14	122.14	5	5	604	6	6	(61)	
PINAL	84	85	12,907	153.65	151.85	0	0	(297)	7	7	977	
DISTRICT VI												
COCHISE	64	64	9,790	152.97	152.97	(4)	(4)	(977)	(26)	(27)	(4,751)	
GRAHAM	49	49	7,520	153.47	153.47	0	0	(220)	(17)	(18)	(3,129)	
GREENLEE	11	11	1,773	161.18	161.18	(1)	(1)	(238)	(1)	(1)	(238)	
SANTA CRUZ	0	0	0	0.00	0.00	0	0	0	(5)	(5)	(800)	
SANTA CRUZ	4	4	497	124.25	124.25	(3)	(3)	(519)	(3)	(3)	(584)	

1/EXCLUDES: PRIOR MONTH NET TOTALS OF : 211 CASES; 211 RECIPIENTS; \$44,554.  
REFUGEE RESETTLEMENT PROGRAM: 102 CASES; 191 RECIPIENTS; \$27,985.

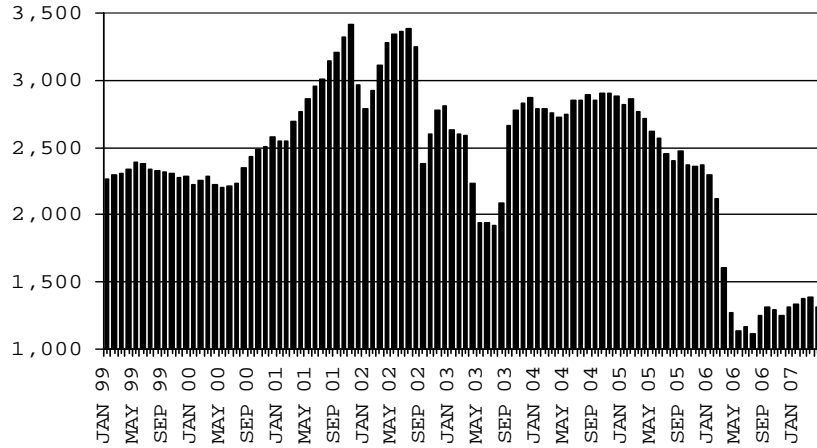
# CHART 2

## GENERAL ASSISTANCE PROGRAM

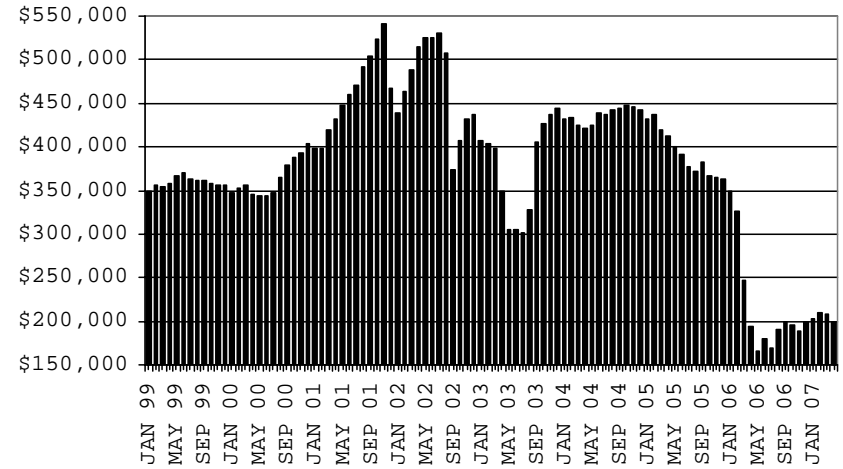
### COMPARISON OF CASES, PAYMENTS & AVERAGE PAYMENTS

FOR 1999, 2000, 2001, 2002, 2003, 2004, 2005 & 2006

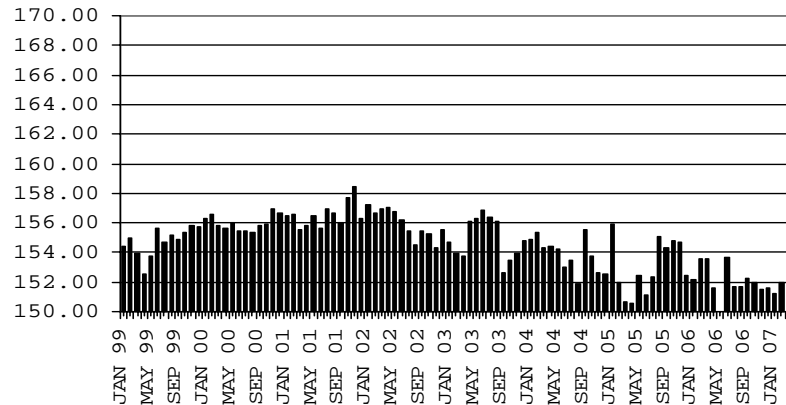
#### CASES



#### PAYMENTS



#### AVERAGE PAYMENT PER CASE



**TABLE 4**

**TUBERCULOSIS CONTROL: ARIZONA 1/**

	MARCH 2007					CHANGE FROM					
						FEBRUARY 2007			MARCH 2006		
	NUMBER OF CASES	PERSONS (RECIP.)	TOTAL PAYMENTS	AVERAGE PAYMENT/ CASE	AVERAGE PAYMENT/ RECIP.	NUMBER OF CASES	PERSONS (RECIP.)	TOTAL PAYMENTS	NUMBER OF CASES	PERSONS (RECIP.)	TOTAL PAYMENTS
ARIZONA	15	15	1,762	117.47	117.47	1	1	79	(5)	(5)	(743)
DISTRICT I											
MARICOPA	15	15	1,762	117.47	117.47	1	1	79	(2)	(2)	(315)
DISTRICT II											
PIMA	0	0	0	0.00	0.00	0	0	0	(1)	(1)	(173)
DISTRICT III	0	0	0	0.00	0.00	0	0	0	(1)	(1)	(108)
APACHE	0	0	0	0.00	0.00	0	0	0	0	0	0
COCONINO	0	0	0	0.00	0.00	0	0	0	0	0	0
NAVAJO	0	0	0	0.00	0.00	0	0	0	0	0	0
YAVAPAI	0	0	0	0.00	0.00	0	0	0	(1)	(1)	(108)
DISTRICT IV	0	0	0	0.00	0.00	0	0	0	(1)	(1)	(147)
LA PAZ	0	0	0	0.00	0.00	0	0	0	0	0	0
MOHAVE	0	0	0	0.00	0.00	0	0	0	(1)	(1)	(147)
YUMA	0	0	0	0.00	0.00	0	0	0	0	0	0
DISTRICT V	0	0	0	0.00	0.00	0	0	0	0	0	0
GILA	0	0	0	0.00	0.00	0	0	0	0	0	0
PINAL	0	0	0	0.00	0.00	0	0	0	0	0	0
DISTRICT VI	0	0	0	0.00	0.00	0	0	0	0	0	0
COCHISE	0	0	0	0.00	0.00	0	0	0	0	0	0
GRAHAM	0	0	0	0.00	0.00	0	0	0	0	0	0
GREENLEE	0	0	0	0.00	0.00	0	0	0	0	0	0
SANTA CRUZ	0	0	0	0.00	0.00	0	0	0	0	0	0

1/EXCLUDES: PRIOR MONTH NET TOTALS OF : 0 CASES; 0 RECIPIENTS; \$0.

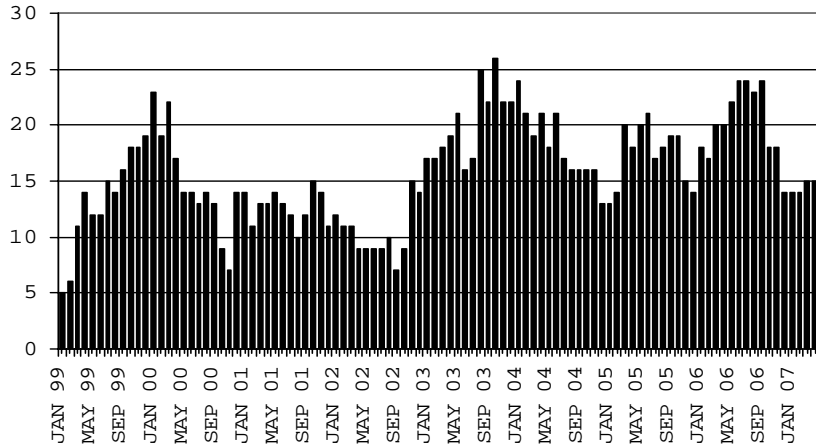
# CHART 4

## TUBERCULOSIS CONTROL PROGRAM

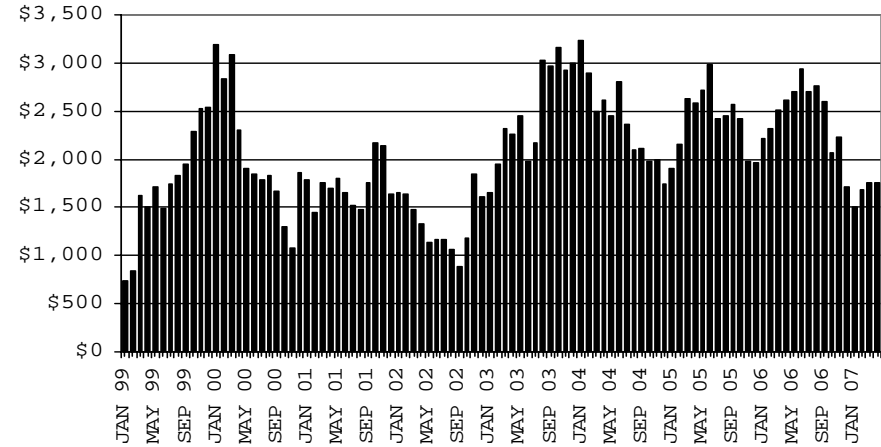
### COMPARISON OF CASES, PAYMENTS & AVERAGE PAYMENTS

FOR 1999, 2000, 2001, 2002, 2003, 2004, 2005 & 2006

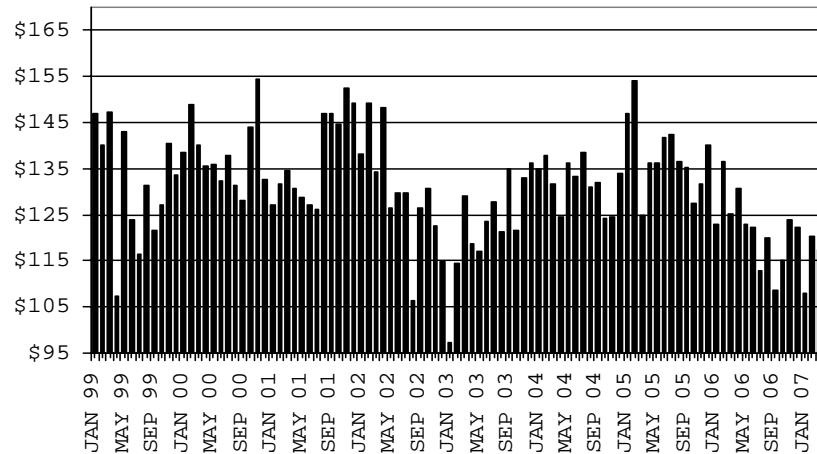
**CASES**



**PAYMENTS**



**AVERAGE PAYMENT PER CASE**



**TABLE 5**

**SUPPLEMENTAL PAYMENTS PROGRAM: ARIZONA 1,  
 BASED ON HB 2535 SPP IS SUSPENDED FROM JULY, 2003 THROUGH JUNE, 2004  
 CHANGE FROM**

	MARCH 2007			FEBRUARY 2007		MARCH 2006	
	NUMBER OF PAYMENTS	TOTAL PAYMENTS	AVERAGE PAYMENT	NUMBER OF PAYMENTS	TOTAL PAYMENTS	NUMBER OF PAYMENTS	TOTAL PAYMENTS
ARIZONA	0	0	0	0	0	0	0
DISTRICT I							
MARICOPA	0	0	0	0	0	0	0
DISTRICT II							
PIMA	0	0	0	0	0	0	0
DISTRICT III							
APACHE	0	0	0	0	0	0	0
COCONINO	0	0	0	0	0	0	0
NAVAJO	0	0	0	0	0	0	0
YAVAPAI	0	0	0	0	0	0	0
DISTRICT IV							
LA PAZ	0	0	0	0	0	0	0
MOHAVE	0	0	0	0	0	0	0
YUMA	0	0	0	0	0	0	0
DISTRICT V							
GILA	0	0	0	0	0	0	0
PINAL	0	0	0	0	0	0	0
DISTRICT VI							
COCHISE	0	0	0	0	0	0	0
GRAHAM	0	0	0	0	0	0	0
GREENLEE	0	0	0	0	0	0	0
SANTA CRUZ	0	0	0	0	0	0	0

1/EXCLUDES: PRIOR MONTH NET TOTALS OF : 0 CASES (PERSONS); \$0.  
 1/TABLE 5 IS BASED ON THE LOCATION OF THE OFFICE THAT PROCEEDS THE APPLICATION.



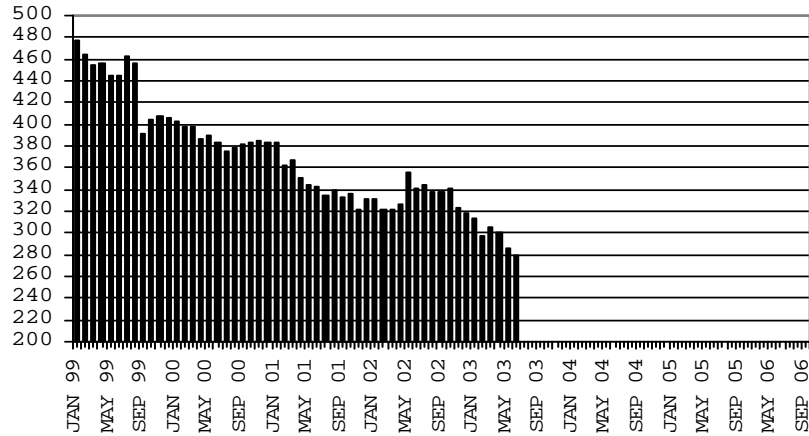
# CHART 5

## SUPPLEMENTAL PAYMENTS PROGRAM

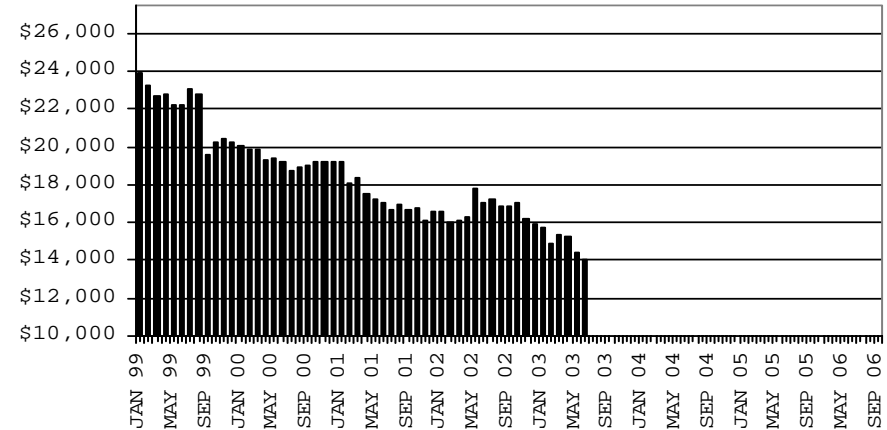
### COMPARISON OF CASES, PAYMENTS & AVERAGE PAYMENTS

FOR 1999, 2000, 2001, 2002, 2003, 2004, 2005 & 2006

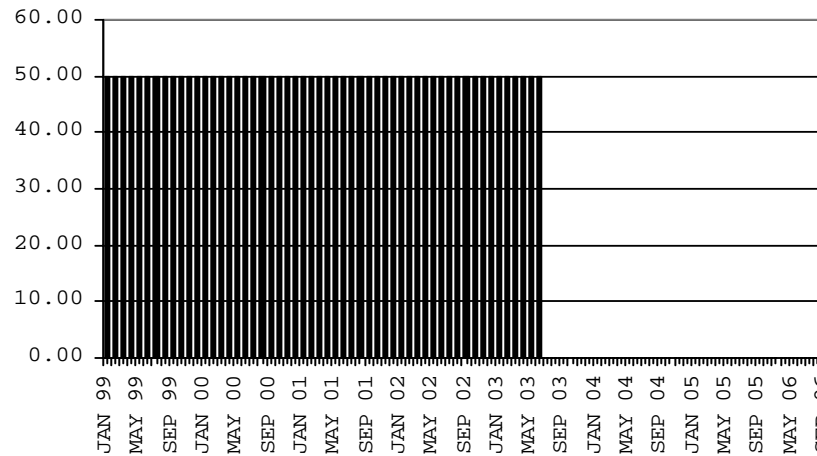
**CASES**



**PAYMENTS**



**AVERAGE PAYMENT PER CASE**



**TABLE 6**

**FOOD STAMP PROGRAM: ARIZONA 1/**

	CHANGE FROM										
	MARCH 2007					FEBRUARY 2007			MARCH 2006		
	HOUSEHOLDS	PERSONS	TOTAL COUPON ISSUANCE	AVERAGE ALLOT./ HOUSEHOLD	AVERAGE ALLOT./ PERSON	HOUSEHOLDS	PERSONS	TOTAL COUPON ISSUANCE	HOUSEHOLDS	PERSONS	TOTAL COUPON ISSUANCE
ARIZONA	220,193	537,464	52,381,803	237.89	97.46	3,638	6,757	901,101	(509)	(791)	1,233,849
DISTRICT I											
MARICOPA	108,742	265,457	26,440,717	243.15	99.60	1,925	4,078	526,942	(2,458)	(3,104)	282,117
DISTRICT II											
PIMA	39,464	91,010	8,842,788	224.07	97.16	645	1,140	147,802	691	1,146	259,474
DISTRICT III											
APACHE	6,204	19,303	1,777,084	286.44	92.06	77	129	13,519	24	(124)	46,722
COCONINO	5,163	15,376	1,411,482	273.38	91.80	117	176	27,543	(30)	(566)	(2,469)
NAVAJO	9,033	25,212	2,370,144	262.39	94.01	184	324	42,653	256	93	114,398
YAVAPAI	6,148	12,356	1,202,990	195.67	97.36	86	150	26,596	(191)	(496)	13,309
DISTRICT IV											
LA PAZ	1,278	2,822	288,271	225.56	102.15	18	29	9,383	75	148	27,191
MOHAVE	10,002	21,138	2,108,460	210.80	99.75	293	487	50,194	428	983	159,576
YUMA	8,720	23,190	2,056,426	235.83	88.68	(24)	(213)	(7,799)	290	374	79,794
DISTRICT V											
GILA	14,128	34,873	3,422,078	242.22	98.13	277	519	60,004	727	1,969	268,675
PINAL	3,281	7,753	767,662	233.97	99.01	36	8	(1,579)	(36)	(158)	(7,112)
DISTRICT VI											
COCHISE	10,847	27,120	2,654,416	244.71	97.88	241	511	61,583	763	2,127	275,787
SANTA CRUZ	11,311	26,727	2,461,363	217.61	92.09	40	(62)	4,264	(321)	(1,214)	(14,938)
COCHISE	6,559	14,761	1,391,057	212.08	94.24	39	(20)	5,847	(128)	(615)	(3,260)
GRAHAM	2,072	4,946	461,098	222.54	93.23	27	42	5,857	(185)	(503)	(31,237)
GREENLEE	262	565	52,792	201.50	93.44	(2)	(11)	(897)	(69)	(159)	(13,819)
SANTA CRUZ	2,418	6,455	556,416	230.11	86.20	(24)	(73)	(6,543)	61	63	33,378

1/EXCLUDES: PRIOR MONTH NET TOTALS OF : 7,834 CASES; 20,286 RECIPIENTS; \$1,061,131.  
 AGED CANCELATIONS: 0 CASES; 0 RECIPIENTS; 0.  
 FS COUPON CONVERSIONS: 0 CASES; 0 RECIPIENTS; \$0.  
 FS REINSTATED: 0 CASES; \$0.  
 FS ZERO PAY: 0 CASES; 0 RECIPIENTS.

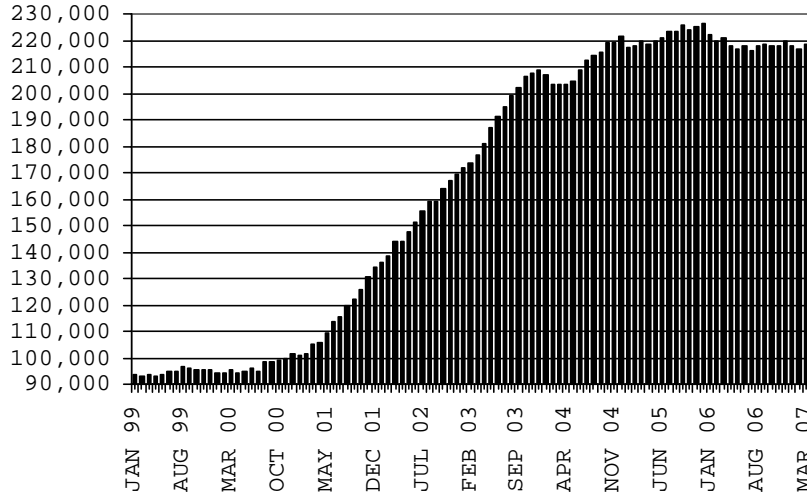
# CHART 6

## FOOD STAMPS PROGRAM

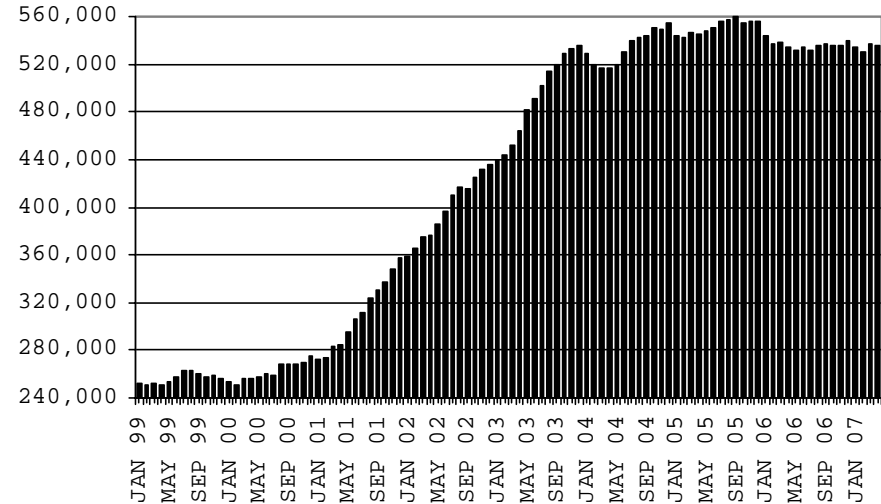
### COMPARISON OF HOUSEHOLDS, RECIPIENTS, PAYMENTS & AVERAGE PAYMENTS

FOR 1999, 2000, 2001, 2002, 2003, 2004, 2005 & 2006

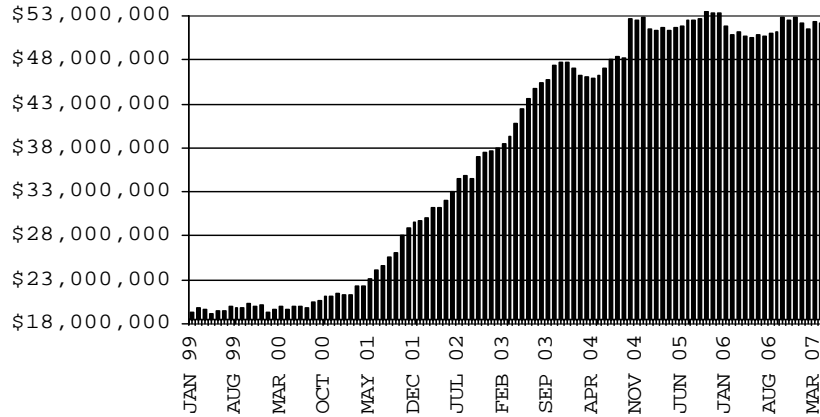
#### HOUSEHOLDS



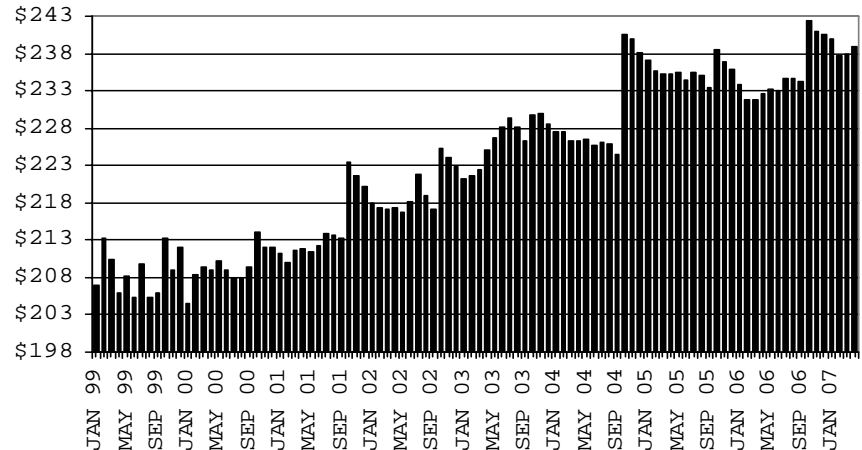
#### RECIPIENTS



#### TOTAL PAYMENTS



#### AVERAGE PAYMENT PER HOUSEHOLD



**TABLE 7A**  
**MEDICAL ASSISTANCE PROGRAM**  
**RECIPIENTS**

**MARCH 2007**

	SOBRA WOMAN 133% FPL	SOBRA CHILD	ADULT W/O CHILD 100% FPL	FOSTER CARE	1931 36% FPL	FEDERAL EMERGENCY SERVICES	INFANTS	ADULT W/O CHILD 40% FPL	MEDICAL W/SPEND DOWN	SOBRA WOMAN 100% FPL	SOBRA CHILD 100% FPL	TRANSITIONAL MEDICAL T1 - T4	1931 100% FPL	YATI	OTHER	TOTAL CASES
ARIZONA	11,141	59,230	36,298	8,718	246,969	83,968	49,713	79,150	5,308	3,232	149,270	45,774	71,138	222	20,049	870,180
DISTRICT I																
MARICOPA	5,650	32,421	15,284	4,366	126,580	64,145	29,879	33,673	3,003	1,605	81,432	21,783	32,465	116	9,791	462,193
DISTRICT II																
PIMA	1,726	9,211	7,201	2,461	38,773	10,598	6,947	14,339	653	533	24,042	7,425	13,029	66	3,615	140,619
DISTRICT III																
APACHE	263	1,388	941	30	10,626	109	997	4,091	64	83	3,787	1,183	2,301	0	327	26,190
COCONINO	419	1,396	1,200	117	7,073	534	1,148	2,821	97	86	3,627	1,241	2,163	4	335	22,261
NAVAJO	350	2,194	1,393	102	11,116	344	1,324	4,419	168	117	4,229	1,401	2,742	4	476	30,379
YAVAPAI	441	1,781	1,633	352	5,295	1,588	1,393	2,484	262	114	3,734	1,448	2,196	11	846	23,578
DISTRICT IV																
LA PAZ	51	237	221	16	1,246	191	190	557	35	20	605	153	355	0	125	4,002
MOHAVE	473	2,070	1,787	219	8,805	1,006	1,599	3,962	308	148	5,775	1,636	3,334	2	1,055	32,179
YUMA	533	2,353	2,019	243	9,349	2,132	1,942	2,874	227	151	7,158	4,228	4,204	3	1,033	38,449
DISTRICT V																
GILA	131	781	544	82	3,924	153	474	1,765	75	37	1,490	555	937	4	261	11,213
PINAL	613	3,258	1,654	386	13,015	1,814	2,146	4,445	226	156	6,388	2,228	3,323	8	1,021	40,681
DISTRICT VI																
COCHISE	247	1,118	1,275	240	6,137	706	845	2,192	97	91	3,456	1,173	2,049	3	677	20,306
GRAHAM	124	435	401	62	2,124	67	357	780	37	29	1,053	583	621	1	109	6,783
GREENLEE	21	40	49	12	326	7	57	118	2	5	146	57	65	0	22	927
SANTA CRUZ	99	547	696	30	2,580	574	415	630	54	57	2,348	680	1,354	0	356	10,420

**TABLE 7B**

**MEDICAL ASSISTANCE PROGRAM**

**RECIPIENTS**

**CHANGE FROM**

**FEBRUARY 2007**

	SOBRA WOMAN 133% FPL	SOBRA CHILD	ADULT W/O CHILD 100% FPL	FOSTER CARE	1931 36% FPL	FEDERAL EMERGENCY SERVICES	INFANTS	ADULT W/O CHILD 40% FPL	MEDICAL W/SPEND DOWN	SOBRA WOMAN 100% FPL	SOBRA CHILD 100% FPL	TRANSITIONAL MEDICAL T1 - T4	1931 100% FPL	YATI	OTHER	TOTAL CASES
ARIZONA	235	576	411	8	1,415	848	413	915	143	127	976	(542)	413	1	237	6,176
DISTRICT I																
MARICOPA	157	340	234	(25)	1,288	778	216	344	52	48	494	(477)	167	3	7	3,626
DISTRICT II																
PIMA	49	54	87	16	178	46	24	191	68	11	58	125	(3)	2	99	1,005
DISTRICT III																
APACHE	8	(26)	19	1	(42)	17	11	(4)	9	0	3	103	8	0	1	108
COCONINO	6	58	36	2	29	21	0	87	(6)	(19)	(9)	59	(10)	(2)	4	256
NAVAJO	4	45	50	(9)	(49)	12	(10)	76	7	11	69	(138)	62	(1)	11	140
YAVAPAI	(12)	(5)	(7)	3	106	(14)	44	32	4	17	7	(125)	13	(1)	13	75
DISTRICT IV																
LA PAZ	(4)	21	0	(1)	(11)	(7)	12	4	4	3	35	(18)	15	0	2	55
MOHAVE	2	14	13	1	74	8	6	23	11	5	8	36	16	0	50	267
YUMA	(12)	31	11	7	(187)	(23)	(2)	(13)	19	4	12	15	39	0	36	(63)
DISTRICT V																
GILA	(1)	9	10	1	47	(9)	22	(2)	(8)	11	(11)	6	34	1	12	122
PINAL	1	57	(13)	14	(22)	17	68	155	(12)	9	284	(1)	89	0	(19)	627
DISTRICT VI																
COCHISE	22	(24)	(2)	(3)	7	(2)	0	15	2	13	28	(31)	14	0	8	47
GRAHAM	6	(6)	(23)	(1)	(9)	0	11	14	(4)	4	8	(77)	(19)	(1)	1	(96)
GREENLEE	2	(1)	5	2	(2)	1	7	(8)	0	2	17	(13)	(1)	0	(4)	7
SANTA CRUZ	7	9	(9)	0	8	3	4	1	(3)	8	(27)	(6)	(11)	0	16	0

**TABLE 7C**  
**MEDICAL ASSISTANCE PROGRAM**  
**RECIPIENTS**

**CHANGE FROM**

**MARCH 2006**

	SOBRA WOMAN 133% FPL	SOBRA CHILD	ADULT W/O CHILD 100% FPL	FOSTER CARE	1931 36% FPL	FEDERAL EMERGENCY SERVICES	INFANTS	ADULT W/O CHILD 40% FPL	MEDICAL W/SPEND DOWN	SOBRA WOMAN 100% FPL	SOBRA CHILD 100% FPL	TRANSITIONAL MEDICAL T1 - T4	3E 1931 100% FPL	YATI	OTHER	TOTAL CASES
ARIZONA	185	1,048	(1,410)	295	(9,597)	629	546	(6,243)	(256)	205	4,090	(2,316)	(848)	45	1,381	(12,246)
DISTRICT I																
MARICOPA	(253)	512	(961)	116	(6,802)	841	(439)	(5,425)	(184)	163	1,841	(842)	(1,041)	20	489	(11,965)
DISTRICT II																
PIMA	93	56	(185)	90	(874)	234	356	(722)	(54)	25	1,102	(282)	141	12	243	235
DISTRICT III																
APACHE	15	26	124	(11)	(212)	(7)	11	134	5	(9)	2	(8)	52	0	37	159
COCONINO	62	67	(27)	7	(546)	(91)	(32)	(61)	(43)	(13)	(42)	(47)	54	(2)	48	(666)
NAVAJO	41	99	54	(31)	(89)	31	25	207	(43)	12	(68)	(105)	(64)	3	34	106
YAVAPAI	15	(1)	2	2	(151)	17	90	(158)	40	0	(73)	(275)	(146)	3	99	(536)
DISTRICT IV																
LA PAZ	11	7	(16)	0	61	(25)	8	6	12	10	38	15	29	0	16	172
MOHAVE	(34)	52	(63)	11	(531)	18	153	(195)	(38)	(5)	260	(337)	5	2	30	(672)
YUMA	50	(29)	(36)	48	(370)	(288)	43	48	67	(16)	245	32	171	(1)	170	134
DISTRICT V																
GILA	22	(37)	(8)	0	(162)	5	24	(88)	(19)	9	95	(5)	28	0	(7)	(143)
PINAL	116	431	(22)	69	571	19	260	289	2	6	689	(111)	92	6	116	2,533
DISTRICT VI																
COCHISE	17	(75)	(171)	(2)	(281)	(125)	(9)	(59)	(11)	21	24	(162)	(121)	1	71	(882)
GRAHAM	20	(4)	(45)	(4)	(205)	(17)	48	(153)	(3)	(14)	(52)	46	(88)	1	(12)	(482)
GREENLEE	(4)	(6)	2	2	(74)	1	3	(58)	(1)	3	(11)	(15)	(17)	0	(4)	(179)
SANTA CRUZ	14	(50)	(58)	(2)	68	16	5	(8)	14	13	40	(220)	57	0	51	(60)

# CHART 7

## MEDICAL ASSISTANCE PROGRAM COMPARISON OF RECIPIENTS FOR 1999, 2000, 2001, 2002, 2003, 2004, 2005 & 2006

### TOTAL RECIPIENTS

