

**** STATISTICAL BULLETIN ****
ARIZONA DEPARTMENT OF ECONOMIC SECURITY
FAMILY ASSISTANCE ADMINISTRATION
BOX 6123, PHOENIX, ARIZONA 85005
PHONE (602) 542-3678

APRIL 2007

THIS ISSUE OF THE STATISTICAL BULLETIN COMPARES APRIL 2007 DATA FOR EACH OF THE INDICATED PROGRAMS WITH THE INFORMATION FOR MARCH 2007 AND APRIL 2006. STATEWIDE SUMMARIES OF ACTIVITY WITHIN EACH OF THE SPECIFIC PROGRAMS FOR THIS REPORT PERIOD ARE DISCUSSED BELOW. THE TABLES COMPARE CURRENT AND PRIOR MONTH DATA. DISTRICT AND COUNTY COMPARISONS ARE PROVIDED WITHIN THIS BULLETIN

CASH ASSISTANCE (CA)

COMPARING TO MARCH 2007, APRIL 2007 CASES DECREASED BY 378 (1.07%) TO 34,885. RECIPIENTS DECREASED BY 846 (1.12%) TO 75,028. PAYMENTS DECREASED BY \$105,880 (1.12%) TO \$9,358,721. AVERAGE PAYMENT PER CASE DECREASED BY \$0.13 (0.05%) TO \$268.27. PAYMENT PER RECIPIENT INCREASED BY \$0.00 (0.00%) TO \$124.74.

COMPARING TO APRIL 2006, APRIL 2007 CASES DECREASED BY 3,393 (8.86%). RECIPIENTS DECREASED BY 9,086 (10.80%). TOTAL PAYMENTS DECREASED BY \$1,021,223 (9.84%). THE AVERAGE PAYMENT PER CASE DECREASED BY \$2.90 (1.07%). THE AVERAGE PAYMENT PER RECIPIENT INCREASED BY \$1.34 (1.19%).

CASH ASSISTANCE UNEMPLOYED PARENT PROGRAM (CA-UP)

COMPARING TO MARCH 2007, APRIL 2007 CASES INCREASED BY 5 (0.93%) TO 545. RECIPIENTS INCREASED BY 17 (0.83%) TO 2,058. PAYMENTS INCREASED BY \$6,278 (3.25%) TO \$199,317. AVERAGE PAYMENT PER CASE INCREASED BY \$8.24 (2.31%) TO \$365.72. PAYMENT PER RECIPIENT INCREASED BY \$2.27 (2.40%) TO \$96.85.

COMPARING TO APRIL 2006, APRIL 2007 CASES DECREASED BY 2 (0.37%). RECIPIENTS INCREASED BY 50 (2.49%). TOTAL PAYMENTS INCREASED BY \$4,756 (2.44%). THE AVERAGE PAYMENT PER CASE INCREASED BY \$10.04 (2.82%). THE AVERAGE PAYMENT PER RECIPIENT DECREASED BY \$0.04 (0.04%).

CASH ASSISTANCE WITH GRANT UNDER \$100 (CA-MOE)

COMPARING TO MARCH 2007, APRIL 2007 CASES DECREASED BY 100 (13.16%) TO 660. RECIPIENTS DECREASED BY 196 (12.44%) TO 1,379. PAYMENTS DECREASED BY \$7,095 (13.14%) TO \$46,892. AVERAGE PAYMENT PER CASE INCREASED BY \$0.01 (0.01%) TO \$71.05. AVERAGE PAYMENT PER RECIPIENT DECREASED BY \$0.28 (0.82%) TO \$34.00.

COMPARING TO APRIL 2006, APRIL 2007 CASES DECREASED BY 82 (11.05%). RECIPIENTS DECREASED BY 197 (12.50%). TOTAL PAYMENTS DECREASED BY \$6,905 (12.84%). THE AVERAGE PAYMENT PER CASE DECREASED BY \$1.45 (2.00%). THE AVERAGE PAYMENT PER RECIPIENT DECREASED BY \$0.14 (0.41%).

CASH ASSISTANCE UNEMPLOYED PARENT PROGRAM WITH GRANT UNDER \$100 (CA-UP-MOE) NEW PROGRAM STARTING 7/01

COMPARING TO MARCH 2007, APRIL 2007 CASES DECREASED BY 3 (30.00%) TO 7. RECIPIENTS DECREASED BY 2 (7.14%) TO 26. PAYMENTS DECREASED BY \$242 (39.48%) TO \$371. AVERAGE PAYMENT PER CASE DECREASED BY \$8.30 (13.54%) TO \$53.00. PAYMENT PER RECIPIENT DECREASED BY \$7.62 (34.81%) TO \$14.27.

COMPARING TO APRIL 2006, APRIL 2007 CASES DECREASED BY 2 (22.22%). RECIPIENTS DECREASED BY 12 (1.96%). TOTAL PAYMENTS DECREASED BY \$332 (47.23%). THE AVERAGE PAYMENT PER CASE DECREASED BY \$25.11 (32.15%). THE AVERAGE PAYMENT PER RECIPIENT DECREASED BY \$4.23 (22.86%).

GENERAL ASSISTANCE (GA)

COMPARING TO MARCH 2007, APRIL 2007 CASES DECREASED BY 71 (5.13%) TO 1,314. RECIPIENTS DECREASED BY 70 (5.03%) TO 1,323. PAYMENTS DECREASED BY \$9,228 (4.42%) TO \$199,721. AVERAGE PAYMENT PER CASE INCREASED BY \$1.12 (0.74%) TO \$151.99. AVERAGE PAYMENT PER RECIPIENT INCREASED BY \$0.96 (0.64%) TO \$150.96.

COMPARING TO APRIL 2006, APRIL 2007 CASES INCREASED BY 47 (3.71%). RECIPIENTS INCREASED BY 45 (3.52%). TOTAL PAYMENTS INCREASED BY \$5,993 (3.09%). THE AVERAGE PAYMENT PER CASE DECREASED BY \$0.91 (0.60%). THE AVERAGE PAYMENT PER RECIPIENT DECREASED BY \$0.63 (0.41%).

TUBERCULOSIS CONTROL PROGRAM (TC)

COMPARING TO MARCH 2007, APRIL 2007 CASES INCREASED BY 0 (0.00%) TO 15. RECIPIENTS INCREASED BY 0 (0.00%) TO 15. PAYMENTS DECREASED BY \$5 (0.28%) TO \$1,757. AVERAGE PAYMENT PER CASE DECREASED BY \$0.34 (0.29%) TO \$117.13. AVERAGE PAYMENT PER RECIPIENT DECREASED BY \$0.34 (0.29%) TO \$117.13.

COMPARING TO APRIL 2006, APRIL 2007 CASES DECREASED BY 5 (25.00%). RECIPIENTS DECREASED BY 5 (25.00%). TOTAL PAYMENTS DECREASED BY \$858 (32.81%). THE AVERAGE PAYMENT PER CASE DECREASED BY \$13.62 (10.42%). THE AVERAGE PAYMENT PER RECIPIENT DECREASED BY \$13.62 (10.42%).

SUPPLEMENTAL PAYMENTS PROGRAM (SPP)

AS A RESULT OF ARIZONA'S OMNIBUS BUDGET RECONCILIATION BILL, HB 2535, THE SUPPLEMENTAL PAYMENT PROGRAM (SPP) IS BEING SUSPENDED EFFECTIVE JULY, 2003 THROUGH JUNE, 2004.

FOOD STAMP PROGRAM (FS)

COMPARING TO MARCH 2007, APRIL 2007 FOOD STAMP HOUSEHOLDS DECREASED BY 1,576 (0.72%) TO 218,617. PERSONS RECEIVING FOOD STAMPS DECREASED BY 1,820 (0.34%) TO 535,644. TOTAL COUPON ISSUANCE DECREASED BY \$155,818 (0.30%) TO \$52,225,985. THE AVERAGE HOUSEHOLD ALLOTMENT INCREASED BY \$1.00 (0.42%) TO \$238.89. THE AVERAGE ALLOTMENT PER PERSON INCREASED BY \$0.04 (0.04%) TO \$97.50.

COMPARING TO APRIL 2006, APRIL 2007 FOOD STAMP HOUSEHOLDS INCREASED BY 438 (0.20%). PERSONS RECEIVING FOOD STAMPS INCREASED BY 1,870 (0.35%). TOTAL COUPON ISSUANCE INCREASED BY \$1,456,884 (2.87%). THE AVERAGE ALLOTMENT PER HOUSEHOLD INCREASED BY \$6.20 (2.66%). THE AVERAGE ALLOTMENT PER PERSON INCREASED BY \$2.39 (2.51%).

MEDICAL ASSISTANCE PROGRAM (MA) NEW TABLE INCLUDES PROP. 204 CATEGORIES

COMPARING TO MARCH 2007, APRIL 2007 TOTAL RECIPIENTS TOTAL RECIPIENTS INCREASED BY 2,213 (0.25%). SOBRA WOMEN AT 140% FPL INCREASED BY 72 (0.65%). SOBRA CHILDREN DECREASED BY 527 (0.89%). ADULTS W/O CHILD AT 100% DECREASED BY 313 (0.86%). FOSTER CARE INCREASED BY 131 (1.50%). 1931 AT 36% FPL INCREASED BY 1,200 (0.49%). EMERGENCY SERVICES INCREASED BY 74 (0.09%). INFANTS DECREASED BY 366 (0.74%). ADULT W/O CHILD AT 140% INCREASED BY 111 (0.14%). MEDICAL W/SPEND DOWN DECREASED BY 85 (1.60%). SOBRA WOMAN AT 100% INCREASED BY 90 (2.78%). SOBRA CHILD AT 100% INCREASED BY 2,284 (1.53%). TRANSITIONAL MEDICAL DECREASED BY 1,395 (3.05%). 1931 AT 100% INCREASED BY 940 (1.32%). YATI INCREASED BY 4 (1.80%). ALL OTHER CATEGORIES DECREASED BY 7 (0.03%).

COMPARING TO APRIL 2006, APRIL 2007 TOTAL RECIPIENTS TOTAL RECIPIENTS DECREASED BY 13,324 (1.50%). SOBRA WOMEN AT 140% FPL INCREASED BY 147 (1.33%). SOBRA CHILDREN INCREASED BY 887 (1.53%). ADULTS W/O CHILD AT 100% DECREASED BY 1,778 (4.71%). FOSTER CARE INCREASED BY 356 (4.19%). 1931 AT 36% FPL DECREASED BY 9,760 (3.78%). EMERGENCY SERVICES INCREASED BY 357 (0.43%). INFANTS INCREASED BY 481 (0.98%). ADULT W/O CHILD AT 140% DECREASED BY 6,008 (7.05%). MEDICAL W/SPEND DOWN DECREASED BY 392 (6.98%). SOBRA WOMAN AT 100% INCREASED BY 124 (3.88%). SOBRA CHILD AT 100% INCREASED BY 3,808 (2.58%). TRANSITIONAL MEDICAL DECREASED BY 1,704 (3.70%). 1931 AT 100% DECREASED BY 1,243 (1.70%). YATI INCREASED BY 55 (32.16%). ALL OTHER CATEGORIES INCREASED BY 1,346 (7.20%).

TANF SUMMARY

TABLES 1, 1A, 1B, & 1C: ARIZONA 1

	APRIL 2007							MARCH 2007			CHANGE FROM APRIL 2006		
	FAMILIES (CASES)	PERSONS (RECIP.)	ADULTS	CHILDREN	TOTAL PAYMENTS	AVERAGE PAYMENT/ CASE	AVERAGE PAYMENT/ RECIP.	FAMILIES (CASES)	PERSONS (RECIP.)	TOTAL PAYMENTS	FAMILIES (CASES)	PERSONS (RECIP.)	TOTAL PAYMENTS
	ARIZONA	36,097	78,491	18,813	59,678	9,605,301	266.10	122.37	(476)	(1,027)	(106,939)	(3,479)	(9,245)
DISTRICT I													
MARICOPA	19,725	43,293	9,643	33,650	5,284,909	267.93	122.07	(212)	(419)	(39,726)	(2,151)	(5,503)	(642,753)
DISTRICT II													
PIMA	6,938	14,610	3,715	10,895	1,832,613	264.14	125.44	(129)	(232)	(22,982)	(615)	(1,616)	(175,903)
DISTRICT III													
APACHE	127	288	92	196	31,812	250.49	110.46	7	22	1,427	6	11	1,135
COCONINO	265	553	147	406	66,290	250.15	119.87	(4)	(12)	(1,424)	(16)	(76)	(5,118)
NAVAJO	1,373	3,414	974	2,440	385,198	280.55	112.83	(6)	(2)	(2,382)	(41)	(120)	(8,727)
YAVAPAI	652	1,295	279	1,016	163,669	251.03	126.39	(13)	(17)	(1,767)	(55)	(140)	(9,184)
DISTRICT IV													
LA PAZ	246	555	179	376	66,377	269.83	119.60	1	5	1,074	(7)	(18)	(1,507)
MOHAVE	1,358	2,829	794	2,035	352,492	259.57	124.60	(29)	(61)	(3,284)	(126)	(321)	(28,002)
YUMA	1,094	2,395	487	1,908	290,211	265.28	121.17	(29)	(81)	(10,955)	(183)	(561)	(53,038)
DISTRICT V													
GILA	737	1,597	527	1,070	196,303	266.35	122.92	(18)	(67)	(6,512)	(67)	(234)	(24,909)
PINAL	1,886	4,215	1,103	3,112	497,892	263.99	118.12	(7)	(47)	(6,332)	(32)	(161)	(19,397)
DISTRICT VI													
COCHISE	1,009	2,061	500	1,561	260,431	258.11	126.36	(29)	(78)	(10,955)	(90)	(204)	(24,343)
GRAHAM	388	753	244	509	97,938	252.42	130.06	(14)	(40)	(4,231)	(68)	(193)	(20,791)
GREENLEE	50	104	26	78	13,562	271.24	130.40	6	9	2,075	(7)	(16)	(1,910)
SANTA CRUZ	249	529	103	426	65,604	263.47	124.02	0	(7)	(965)	(27)	(93)	(9,257)

1/EXCLUDES: PRIOR MONTH NET TOTALS OF 1,620 CASES; 3,969 RECIPIENTS; \$304,467.
 1/GRANT DIVERSION TOTALS OF: 0 CASES;\$0.
 ZERO PAY TOTALS OF 0 CASES; 0 RECIPIENTS.

	CURRENT MO. CASES	CURRENT MO. RECIP.	CURRENT MO. DOLLARS	PRIOR MO. CASES	PRIOR MO. RECIP.	PRIOR MO. DOLLARS
PASQUAYAOUI	253	750	\$80,279	11	37	3,508
WM APACHE	765	2,012	\$229,410	35	96	7,169
SALT RIVER	94	311	\$29,189	8	28	1,832
NAVAJO	0	0	\$0	0	0	0
HOPI	162	492	\$40,747	7	21	857
TOTAL	1,274	3,565	\$379,625	61	182	\$13,366

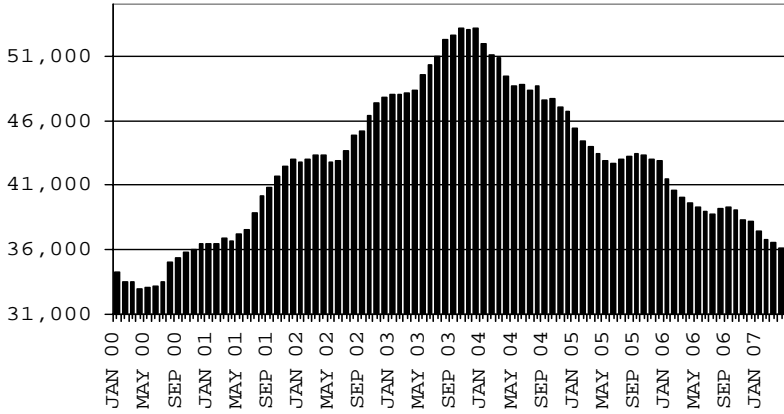
TANF SUMMARY

TABLES 1, 1A, 1B, & 1C

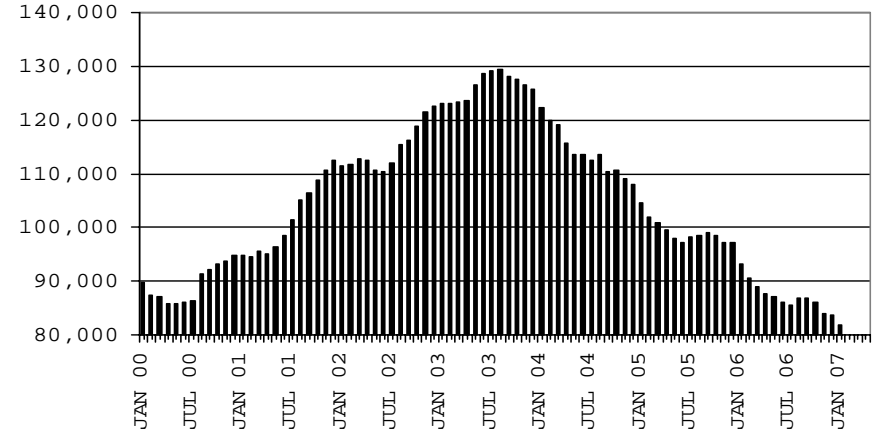
COMPARISON OF CASES, RECIPIENTS, PAYMENTS & AVERAGE PAYMENTS

FOR 2000, 2001, 2002, 2003, 2004, 2005 & 2006

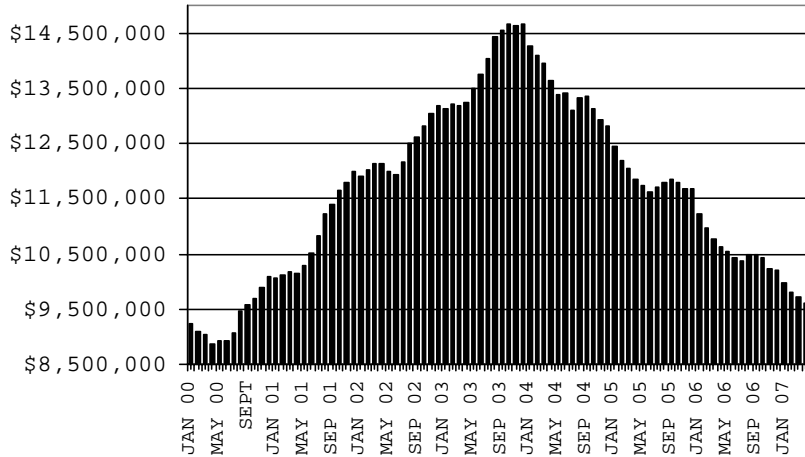
CASES



RECIPIENTS



PAYMENTS



AVERAGE PAYMENTS PER RECIPIENT

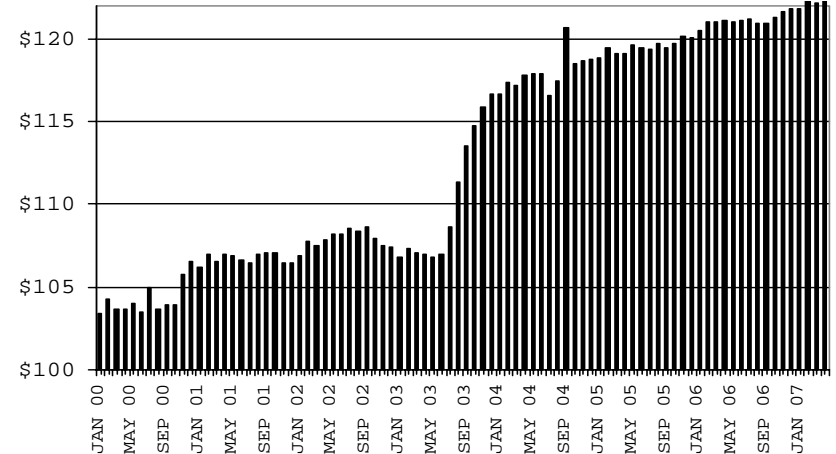


TABLE 1
CASH ASSISTANCE: ARIZONA 1.

	APRIL 2007							CHANGE FROM					
								MARCH 2007			APRIL 2006		
	FAMILIES (CASES)	RECIP. (RECIP.)	ADULTS	CHILDREN	TOTAL PAYMENTS	AVERAGE PAYMENT/ CASE	AVERAGE PAYMENT/ RECIP.	FAMILIES (CASES)	PERSONS (RECIP.)	TOTAL PAYMENTS	FAMILIES (CASES)	PERSONS (RECIP.)	TOTAL PAYMENTS
ARIZONA	34,885	75,028	17,553	57,475	9,358,721	268.27	124.74	(378)	(846)	(105,880)	(3,393)	(9,086)	(1,021,223)
DISTRICT I													
MARICOPA	19,136	41,694	9,133	32,561	5,176,508	270.51	124.15	(169)	(347)	(41,784)	(2,187)	(5,659)	(657,205)
DISTRICT II													
PIMA	6,735	14,020	3,497	10,523	1,792,395	266.13	127.85	(88)	(180)	(21,612)	(556)	(1,496)	(169,194)
DISTRICT III													
APACHE	115	257	81	176	30,049	261.30	116.92	7	21	1,359	6	14	1,258
COCONINO	256	532	137	395	65,123	254.39	122.41	(2)	(10)	(1,462)	(10)	(61)	(4,331)
NAVAJO	1,294	3,113	835	2,278	358,274	276.87	115.09	(13)	(20)	(3,541)	(40)	(107)	(6,160)
YAVAPAI	623	1,229	260	969	158,694	254.73	129.12	(17)	(33)	(2,835)	(55)	(147)	(11,893)
DISTRICT IV													
LA PAZ	233	505	158	347	62,358	267.63	123.48	0	0	171	(6)	(19)	(2,202)
MOHAVE	1,298	2,650	713	1,937	337,773	260.23	127.46	(22)	(29)	(3,522)	(124)	(336)	(33,114)
YUMA	1,057	2,287	451	1,836	282,503	267.27	123.53	(32)	(95)	(12,348)	(158)	(483)	(48,634)
DISTRICT V													
GILA	694	1,468	455	1,013	184,653	266.07	125.79	(13)	(48)	(5,296)	(59)	(194)	(21,438)
PINAL	1,806	3,980	1,009	2,971	481,833	266.80	121.06	3	3	(3,408)	(22)	(112)	(14,433)
DISTRICT VI													
COCHISE	971	1,954	467	1,487	254,393	261.99	130.19	(28)	(81)	(9,018)	(90)	(217)	(25,069)
GRAHAM	379	732	234	498	96,638	254.98	132.02	(9)	(30)	(3,775)	(58)	(163)	(17,810)
GREENLEE	48	100	24	76	13,134	273.63	131.34	7	14	2,107	(8)	(19)	(2,298)
SANTA CRUZ	240	507	99	408	64,393	268.30	127.01	(2)	(11)	(916)	(26)	(87)	(8,700)

1/EXCLUDES: PRIOR MONTH NET TOTALS OF: 899 CASES; 2,262 RECIPIENTS; \$236,811.
GRANT DIVERSION TOTALS OF: 0 CASES; \$0
ZERO PAY TOTALS OF 0 CASES; 0 RECIPIENTS.

	CURRENT MO. CASES	CURRENT MO. RECIP.	CURRENT MO. DOLLARS	PRIOR MO. CASES	PRIOR MO. RECIP	PRIOR MO. DOLLARS
PASQUAYAAQUI	241	697	75,393	8	26	3,238
WM APACHE	712	1,785	208,587	26	65	4,637
SALT RIVER	94	311	29,189	8	28	1,832
NAVAJO	0	0	0	0	0	0
HOPÍ	162	492	40,747	7	21	857
TOTAL	1,209	3,285	353,916	49	140	10,564

CASES WITH GRANT UNDER \$100 (SEE TABLE 1B).

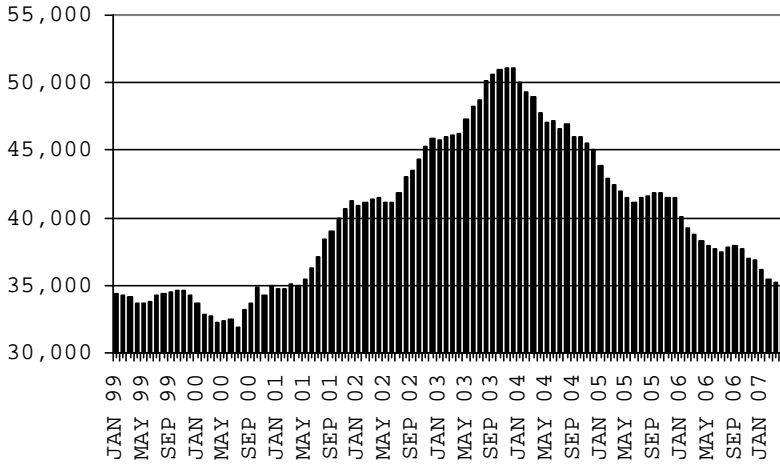
CHART 1

CASH ASSISTANCE PROGRAM

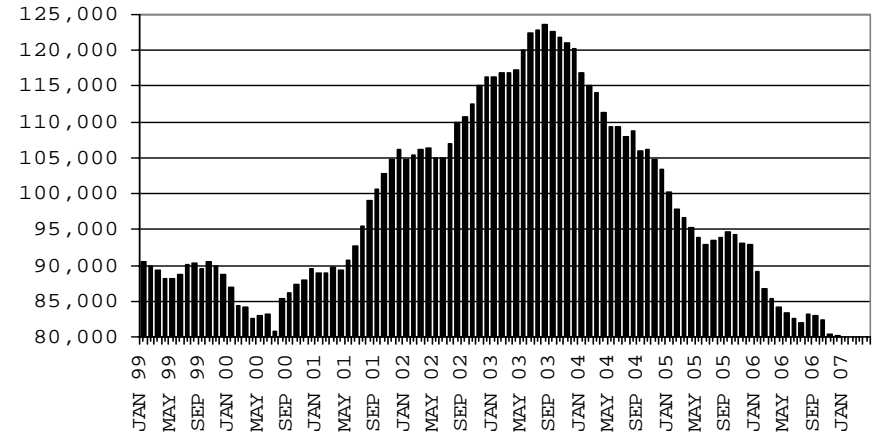
COMPARISON OF CASES, RECIPIENTS, PAYMENTS & AVERAGE PAYMENTS

FOR 1999, 2000, 2001, 2002, 2003, 2004, 2005 & 2006

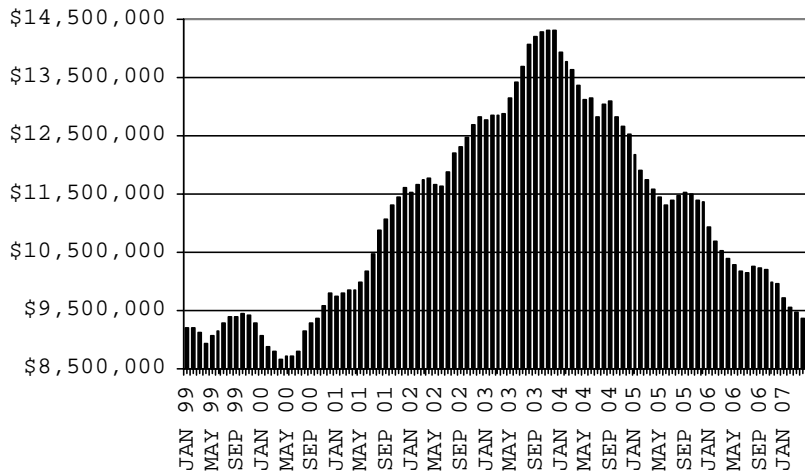
CASES



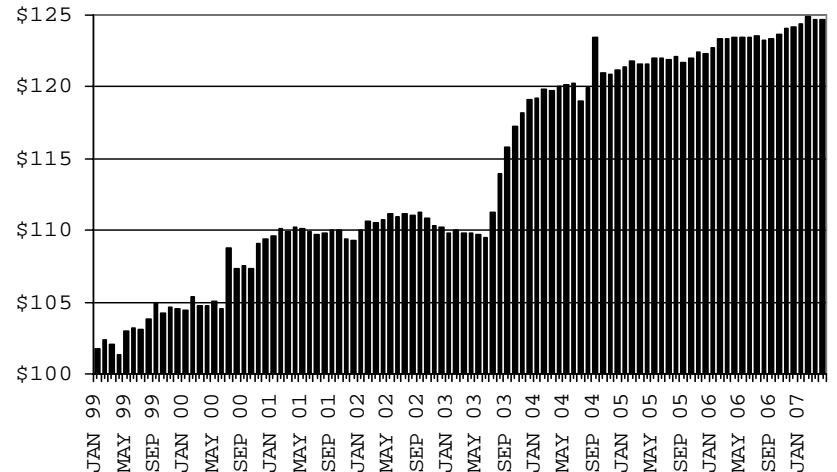
RECIPIENTS



PAYMENTS



AVERAGE PAYMENTS PER RECIPIENT



**TABLE 1A
CA-UP**

CASH ASSISTANCE UNEMPLOYED PARENT PROGRAM: ARIZONA 1

	APRIL 2007							CHANGE FROM			APRIL 2006		
	FAMILIES (CASES)	PERSONS (RECIP.)	ADULTS	CHILDREN	TOTAL PAYMENTS	AVERAGE PAYMENT/ CASE	AVERAGE PAYMENT/ RECIP.	FAMILIES (CASES)	PERSONS (RECIP.)	TOTAL PAYMENTS	FAMILIES (CASES)	PERSONS (RECIP.)	TOTAL PAYMENTS
ARIZONA	545	2,058	896	1,162	199,317	365.72	96.85	5	17	6,278	(2)	50	4,756
DISTRICT I													
MARICOPA	224	829	325	504	82,807	369.67	99.89	5	29	4,619	20	136	13,466
DISTRICT II													
PIMA	88	344	149	195	32,227	366.22	93.68	1	23	2,000	(7)	(1)	(2,548)
DISTRICT III													
APACHE	4	15	7	8	1,370	342.50	91.33	0	0	0	0	(1)	(73)
COCONINO	3	11	6	5	786	262.00	71.45	1	4	202	0	(4)	(406)
NAVAJO	66	274	129	145	25,996	393.88	94.88	3	6	1,026	(4)	(22)	(2,653)
YAVAPAI	11	33	13	20	3,815	346.82	115.61	1	5	715	9	29	3,450
DISTRICT IV													
LA PAZ	11	43	20	23	3,927	357.00	91.33	2	9	1,042	2	9	945
MOHAVE	35	135	64	71	12,365	353.29	91.59	3	(1)	611	13	49	5,528
YUMA	15	61	24	37	6,107	407.13	100.11	3	12	1,494	(10)	(33)	(3,025)
DISTRICT V													
GILA	33	108	63	45	10,911	330.64	101.03	(1)	(10)	(843)	(6)	(34)	(3,216)
PINAL	37	139	69	70	12,576	339.89	90.47	(7)	(39)	(2,679)	(13)	(61)	(4,899)
DISTRICT VI													
COCHISE	11	42	17	25	4,156	377.82	98.95	(5)	(18)	(1,739)	0	4	614
GRAHAM	3	11	6	5	983	327.67	89.36	(1)	(3)	(170)	(7)	(24)	(2,606)
GREENLEE	1	3	2	1	347	347.00	115.67	0	0	0	1	3	347
SANTA CRUZ	3	10	2	8	944	314.67	94.40	0	0	0	0	0	(168)

1/EXCLUDES: PRIOR MONTH NET TOTALS OF: 57 CASES; 230 RECIPIENTS; \$20,833.
GRANT DIVERSION TOTALS OF: 0 CASES; \$0.
ZERO PAY TOTALS OF 0 CASES; 0 RECIPIENTS.

	CURRENT MO. CASES	CURRENT MO. RECIP.	CURRENT MO. DOLLARS	PRIOR MO. CASES	PRIOR MO. RECIP.	PRIOR MO. DOLLARS
PASQUAYAUQUI	12	53	4,886	3	11	270
WM APACHE	53	227	20,823	9	31	2,532
SALT RIVER	0	0	0	0	0	0
NAVAJO	0	0	0	0	0	0
HOPAI	0	0	0	0	0	0
TOTAL	65	280	25,709	12	42	2,802

CASES WITH GRANT UNDER \$100 (SEE TABLE 1C).

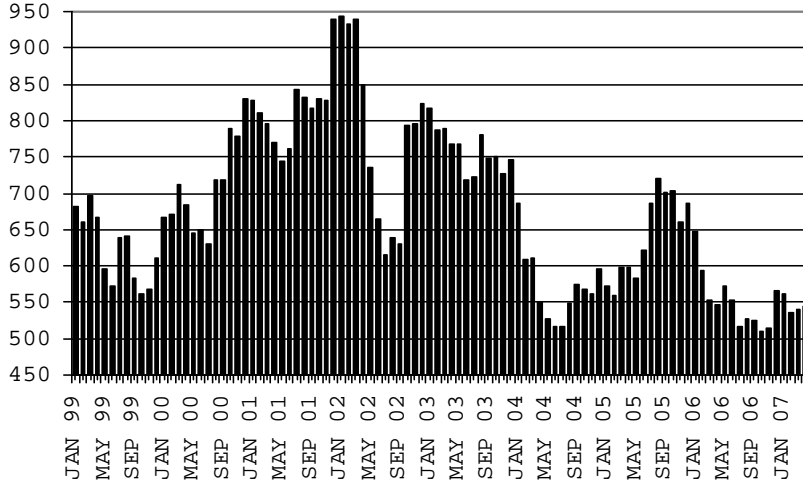
CHART 1A

CASH ASSISTANCE UNEMPLOYED PARENT PROGRAM

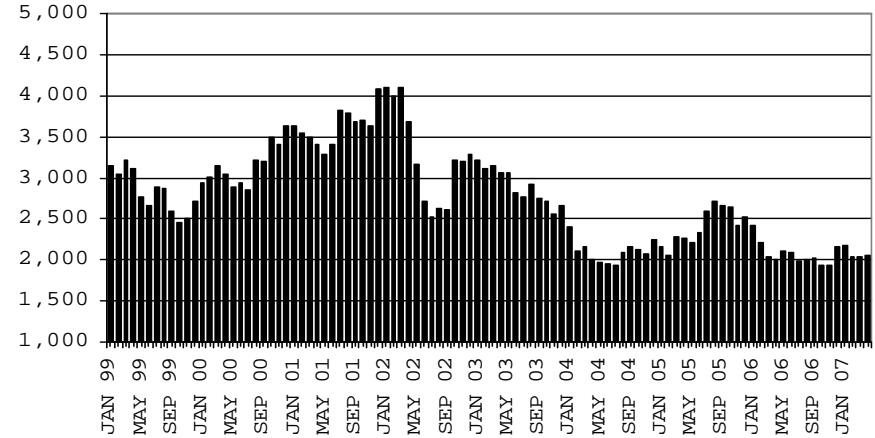
COMPARISON OF CASES, RECIPIENTS, PAYMENTS & AVERAGE PAYMENTS

FOR 1999, 2000, 2001, 2002, 2003, 2004, 2005 & 2006

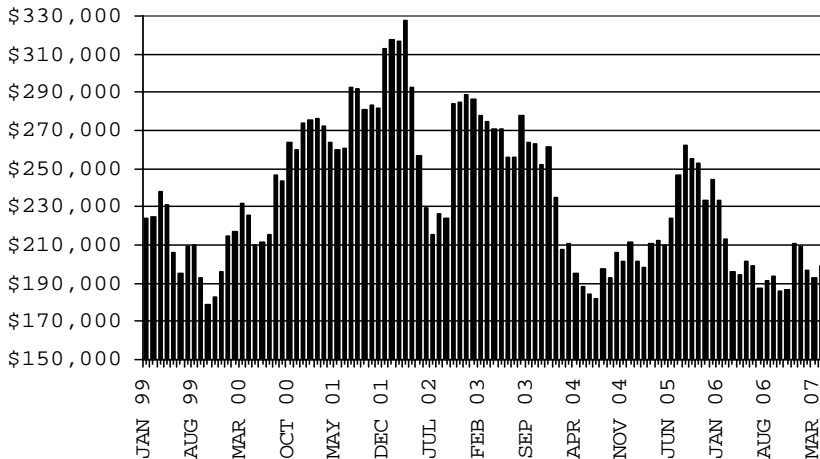
CASES



RECIPIENTS



PAYMENTS



AVERAGE PAYMENTS PER RECIPIENT

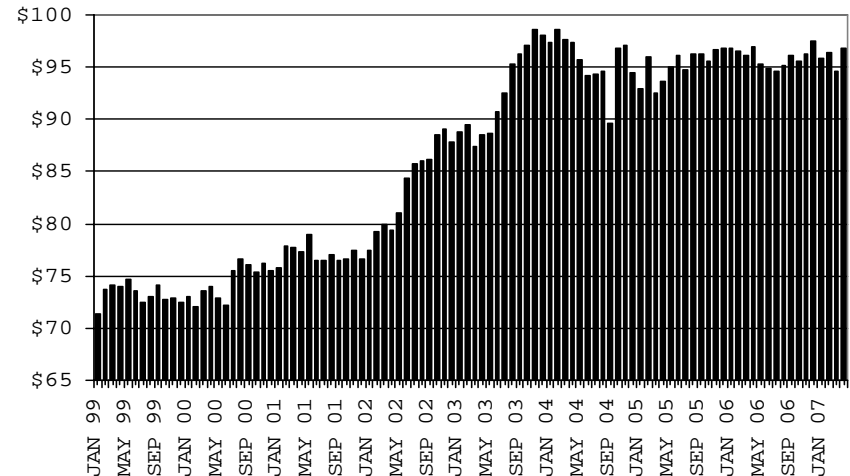


TABLE 1B 1/

CASH ASSISTANCE: ARIZONA
CASES WITH GRANT UNDER \$100

	APRIL 2007							CHANGE FROM			APRIL 2006		
	FAMILIES (CASES)	PERSONS (RECIP.)	ADULTS	CHILDREN	TOTAL PAYMENTS	AVERAGE	AVERAGE	FAMILIES (CASES)	PERSONS (RECIP.)	TOTAL PAYMENTS	FAMILIES (CASES)	PERSONS (RECIP.)	TOTAL PAYMENTS
						PAYMENT/ CASE	PAYMENT/ RECIP.						
ARIZONA	660	1,379	353	1,026	46,892	71.05	34.00	(100)	(196)	(7,095)	(82)	(197)	(6,905)
DISTRICT I													
MARICOPA	364	764	183	581	25,550	70.19	33.44	(48)	(104)	(2,539)	17	25	1,108
DISTRICT II													
PIMA	111	234	64	170	7,781	70.10	33.25	(43)	(83)	(3,402)	(56)	(131)	(4,371)
DISTRICT III													
APACHE	8	16	4	12	393	49.13	24.56	0	1	68	0	(2)	(50)
COCONINO	6	10	4	6	381	63.50	38.10	(3)	(6)	(164)	(6)	(11)	(381)
NAVAJO	12	22	8	14	869	72.42	39.50	3	7	74	2	4	27
YAVAPAI	18	33	6	27	1,160	64.44	35.15	3	11	353	(8)	(18)	(656)
DISTRICT IV													
LA PAZ	49	98	30	68	4,047	82.59	41.30	(9)	(27)	(426)	(31)	(78)	(1,903)
MOHAVE	2	7	1	6	92	46.00	13.14	(1)	(4)	(139)	(3)	(8)	(250)
YUMA	25	44	17	27	2,354	94.16	53.50	(8)	(25)	(186)	(14)	(30)	(319)
	22	47	12	35	1,601	72.77	34.06	0	2	(101)	(14)	(40)	(1,334)
DISTRICT V													
GILA	52	114	32	82	4,164	80.08	36.53	(6)	(14)	(535)	4	17	(68)
PINAL	10	21	9	12	739	73.90	35.19	(2)	0	(232)	(1)	(3)	(210)
	42	93	23	70	3,425	81.55	36.83	(4)	(14)	(303)	5	20	142
DISTRICT VI													
COCHISE	40	88	22	66	2,547	63.68	28.94	3	19	(524)	(4)	(3)	(611)
GRAHAM	27	65	16	49	1,882	69.70	28.95	6	27	(157)	0	9	112
GREENLEE	6	10	4	6	317	52.83	31.70	(4)	(7)	(286)	(3)	(6)	(375)
SANTA CRUZ	1	1	0	1	81	81.00	81.00	(1)	(5)	(32)	0	0	41
	6	12	2	10	267	44.50	22.25	2	4	(49)	(1)	(6)	(389)

EXCLUDES: PRIOR MONTH NET TOTALS OF 0 CASES; 0 RECIPIENTS; \$0.

CHART 1B

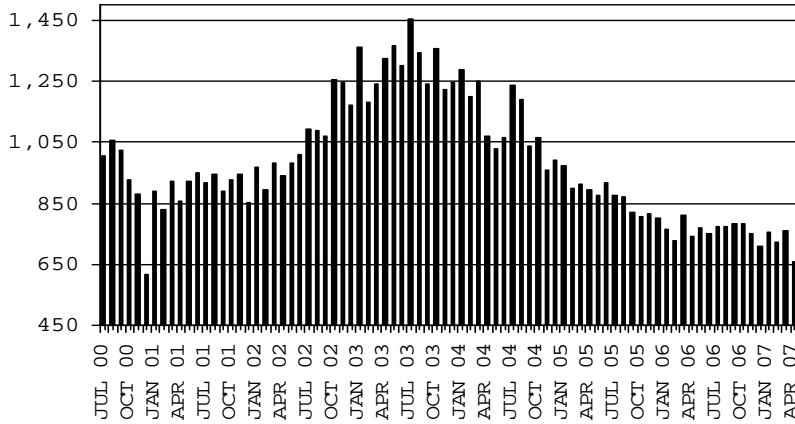
CASH ASSISTANCE PROGRAM

CASES WITH GRANT UNDER \$100

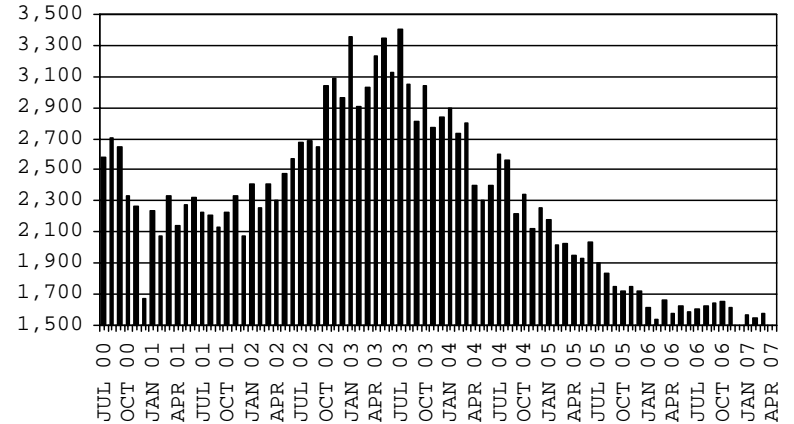
COMPARISON OF CASES, RECIPIENTS, PAYMENTS & AVERAGE PAYMENTS

FOR 2000, 2001, 2002, 2003, 2004, 2005 & 2006

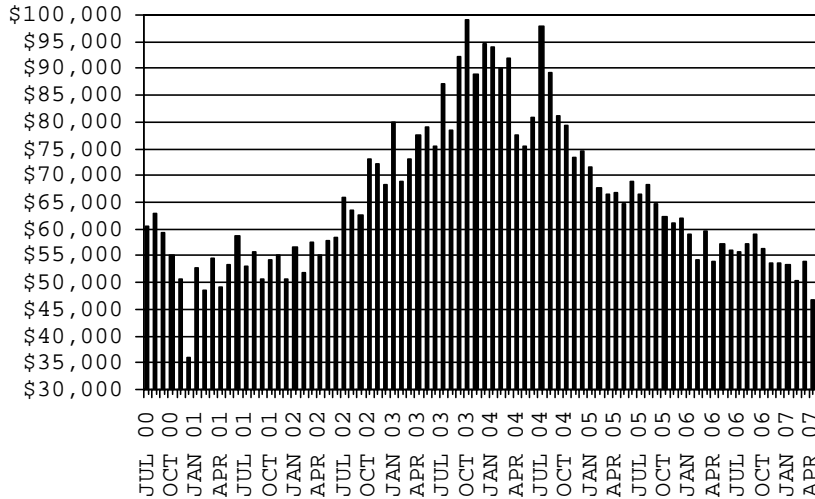
CASES



RECIPIENTS



PAYMENTS



AVERAGE PAYMENTS PER RECIPIENT

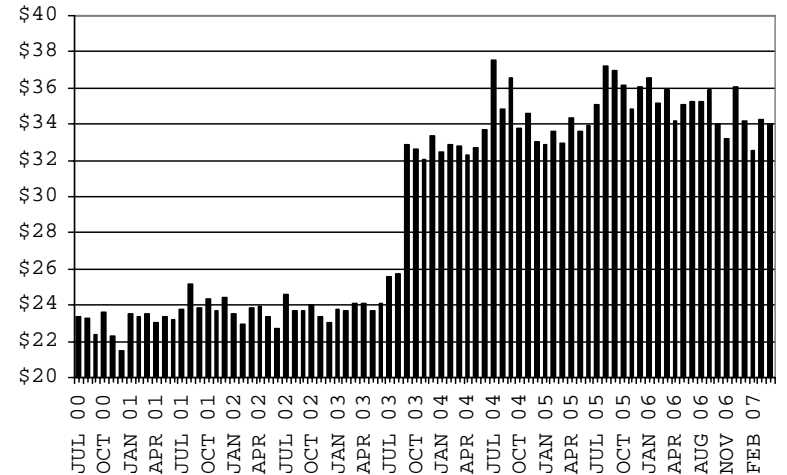


TABLE 1C 1/

CASH ASSISTANCE UNEMPLOYED PARENT PROGRAM: ARIZONA
 CASES WITH GRANT UNDER \$100

	APRIL 2007								CHANGE FROM			APRIL 2006		
					TOTAL		AVERAGE		MARCH 2007			APRIL 2006		
	FAMILIES (CASES)	PERSONS (RECIP.)	ADULTS	CHILDREN	PAYMENTS	PAYMENT/ CASE	PAYMENT/ RECIP.	FAMILIES (CASES)	PERSONS (RECIP.)	TOTAL PAYMENTS	FAMILIES (CASES)	PERSONS (RECIP.)	TOTAL PAYMENTS	
ARIZONA	7	26	11	15	371	53.00	14.27	(3)	(2)	(242)	(2)	(12)	(332)	
DISTRICT I														
MARICOPA	1	6	2	4	44	44.00	7.33	0	3	(22)	(1)	(5)	(122)	
DISTRICT II														
PIMA	4	12	5	7	210	52.50	17.50	1	8	32	4	12	210	
DISTRICT III														
APACHE	0	0	0	0	0	0.00	0.00	0	0	0	0	0	0	
COCONINO	0	0	0	0	0	0.00	0.00	0	0	0	0	0	0	
NAVAJO	1	5	2	3	59	59.00	11.80	1	5	59	1	5	59	
YAVAPAI	0	0	0	0	0	0.00	0.00	0	0	0	(1)	(4)	(85)	
DISTRICT IV														
LA PAZ	0	0	0	0	0	0.00	0.00	0	0	0	0	0	0	
MOHAVE	0	0	0	0	0	0.00	0.00	(2)	(6)	(187)	(1)	(4)	(97)	
YUMA	0	0	0	0	0	0.00	0.00	0	0	0	(1)	(5)	(45)	
DISTRICT V														
GILA	0	0	0	0	0	0.00	0.00	(2)	(9)	(141)	(1)	(3)	(45)	
PINAL	1	3	2	1	58	58.00	19.33	1	3	58	(2)	(8)	(207)	
DISTRICT VI														
COCHISE	0	0	0	0	0	0.00	0.00	(2)	(6)	(41)	0	0	0	
GRAHAM	0	0	0	0	0	0.00	0.00	0	0	0	0	0	0	
GREENLEE	0	0	0	0	0	0.00	0.00	0	0	0	0	0	0	
SANTA CRUZ	0	0	0	0	0	0.00	0.00	0	0	0	0	0	0	

EXCLUDES: PRIOR MONTH NET TOTALS OF 22 CASES; 77 RECIPIENTS; \$1,145.

6/19/2007

CHART 1C

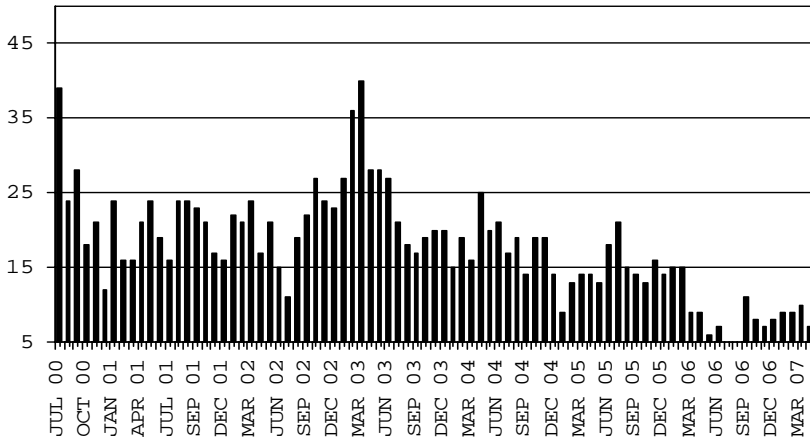
CASH ASSISTANCE UNEMPLOYED PARENT PROGRAM

CASES WITH GRANT UNDER \$100

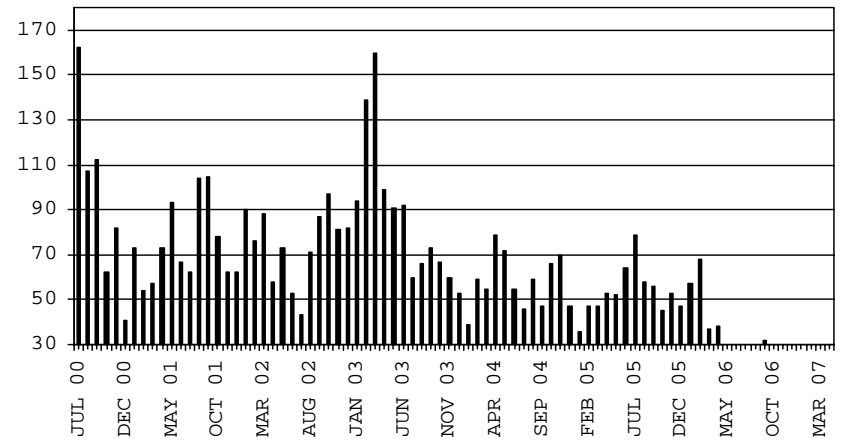
COMPARISON OF CASES, RECIPIENTS, PAYMENTS & AVERAGE PAYMENTS

FOR 2000, 2001, 2002, 2003, 2004, 2005 & 2006

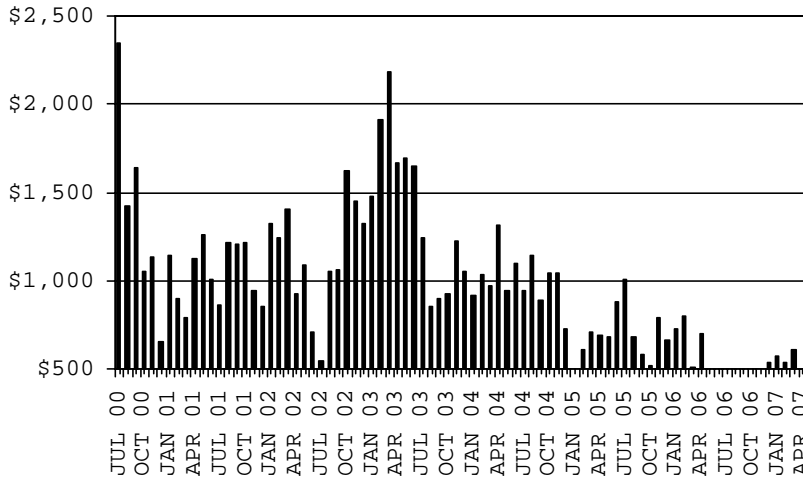
CASES



RECIPIENTS



PAYMENTS



AVERAGE PAYMENTS PER RECIPIENT

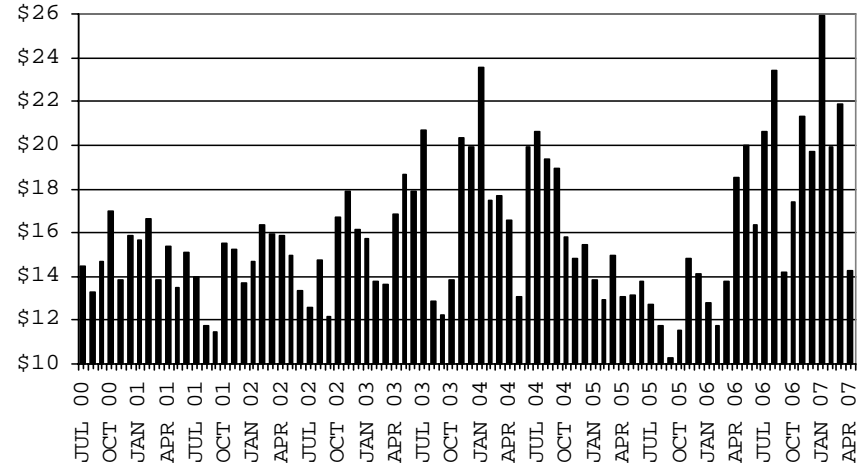


TABLE 2
GENERAL ASSISTANCE: ARIZONA 1,

	CHANGE FROM										
	APRIL 2007					MARCH 2007			APRIL 2006		
	NUMBER OF CASES	PERSONS (RECIP.)	TOTAL PAYMENTS	AVERAGE PAYMENT/ CASE	AVERAGE PAYMENT/ RECIP.	NUMBER OF CASES	PERSONS (RECIP.)	TOTAL PAYMENTS	NUMBER OF CASES	PERSONS (RECIP.)	TOTAL PAYMENTS
ARIZONA	1,314	1,323	199,721	151.99	150.96	(71)	(70)	(9,228)	47	45	5,993
DISTRICT I											
MARICOPA	534	536	81,744	153.08	152.51	(52)	(51)	(7,212)	(34)	(35)	(4,331)
DISTRICT II											
PIMA	347	348	51,781	149.22	148.80	(10)	(10)	(1,380)	66	66	8,688
DISTRICT III											
APACHE	18	20	2,742	152.33	137.10	0	0	(16)	9	10	1,408
COCONINO	17	18	2,642	155.41	146.78	0	0	(37)	(8)	(7)	(827)
NAVAJO	28	29	4,579	163.54	157.90	(2)	(2)	(99)	5	5	995
YAVAPAI	63	63	9,833	156.08	156.08	(1)	(1)	(396)	5	4	620
DISTRICT IV											
LA PAZ	9	10	1,487	165.22	148.70	1	1	108	0	1	(5)
MOHAVE	82	82	12,665	154.45	154.45	4	4	822	9	8	1,602
YUMA	45	46	6,379	141.76	138.67	(6)	(5)	(770)	3	4	(42)
DISTRICT V											
GILA	113	113	16,699	147.78	147.78	1	0	372	14	13	1,674
PINAL	27	27	3,635	134.63	134.63	(1)	(1)	215	0	(1)	(654)
PINAL	86	86	13,064	151.91	151.91	2	1	157	14	14	2,328
DISTRICT VI											
COCHISE	58	58	9,170	158.10	158.10	(6)	(6)	(620)	(22)	(24)	(3,789)
GRAHAM	43	43	6,770	157.44	157.44	(6)	(6)	(750)	(16)	(18)	(2,751)
GREENLEE	13	13	2,119	163.00	163.00	2	2	346	1	1	108
SANTA CRUZ	0	0	0	0.00	0.00	0	0	0	(1)	(1)	(173)
SANTA CRUZ	2	2	281	140.50	140.50	(2)	(2)	(216)	(6)	(6)	(973)

1/EXCLUDES: PRIOR MONTH NET TOTALS OF : 158 CASES; 160 RECIPIENTS; \$36,030.
REFUGEE RESETTLEMENT PROGRAM: 98 CASES; 186 RECIPIENTS; \$25,205.

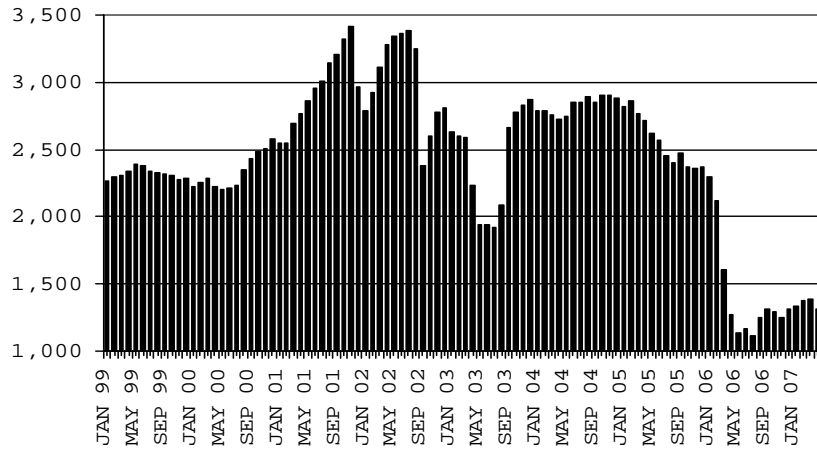
CHART 2

GENERAL ASSISTANCE PROGRAM

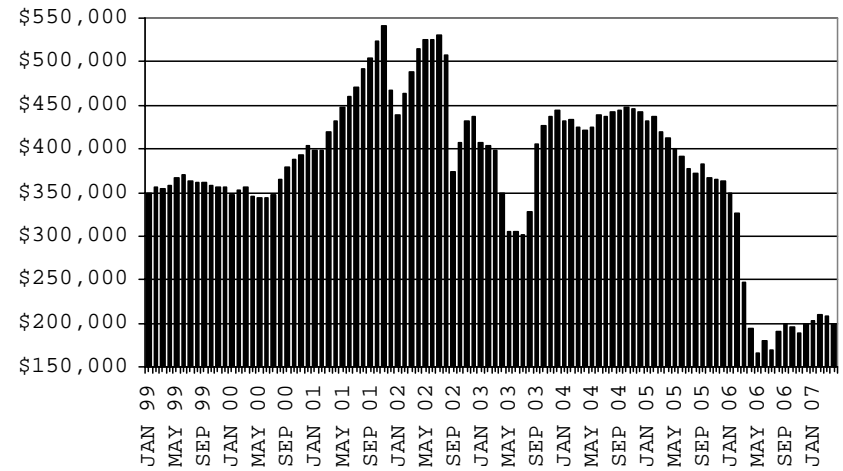
COMPARISON OF CASES, PAYMENTS & AVERAGE PAYMENTS

FOR 1999, 2000, 2001, 2002, 2003, 2004, 2005 & 2006

CASES



PAYMENTS



AVERAGE PAYMENT PER CASE

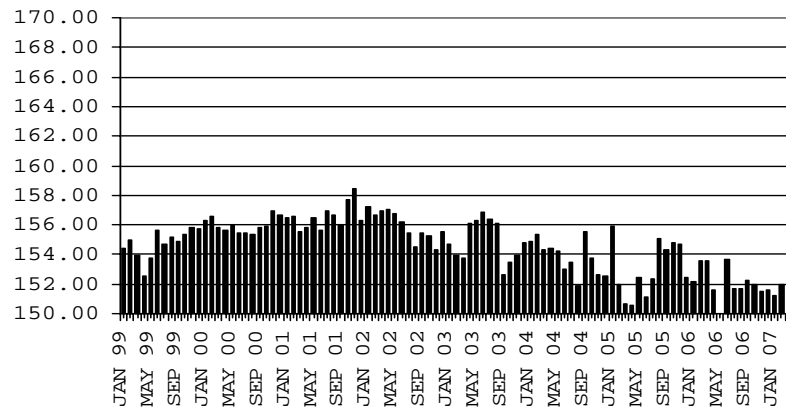


TABLE 4

TUBERCULOSIS CONTROL: ARIZONA 1/

	CHANGE FROM											
	APRIL 2007					MARCH 2007			APRIL 2006			
	NUMBER OF CASES	PERSONS (RECIP.)	TOTAL PAYMENTS	AVERAGE PAYMENT/ CASE	AVERAGE PAYMENT/ RECIP.	NUMBER OF CASES	PERSONS (RECIP.)	TOTAL PAYMENTS	NUMBER OF CASES	PERSONS (RECIP.)	TOTAL PAYMENTS	
ARIZONA	15	15	1,757	117.13	117.13	0	0	(5)	(5)	(5)	(858)	
DISTRICT I												
MARICOPA	15	15	1,757	117.13	117.13	0	0	(5)	(2)	(2)	(404)	
DISTRICT II												
PIMA	0	0	0	0.00	0.00	0	0	0	(1)	(1)	(173)	
DISTRICT III												
APACHE	0	0	0	0.00	0.00	0	0	0	0	0	0	
COCONINO	0	0	0	0.00	0.00	0	0	0	0	0	0	
NAVAJO	0	0	0	0.00	0.00	0	0	0	0	0	0	
YAVAPAI	0	0	0	0.00	0.00	0	0	0	(2)	(2)	(281)	
DISTRICT IV												
LA PAZ	0	0	0	0.00	0.00	0	0	0	0	0	0	
MOHAVE	0	0	0	0.00	0.00	0	0	0	0	0	0	
YUMA	0	0	0	0.00	0.00	0	0	0	0	0	0	
DISTRICT V												
GILA	0	0	0	0.00	0.00	0	0	0	0	0	0	
PINAL	0	0	0	0.00	0.00	0	0	0	0	0	0	
DISTRICT VI												
COCHISE	0	0	0	0.00	0.00	0	0	0	0	0	0	
GRAHAM	0	0	0	0.00	0.00	0	0	0	0	0	0	
GREENLEE	0	0	0	0.00	0.00	0	0	0	0	0	0	
SANTA CRUZ	0	0	0	0.00	0.00	0	0	0	0	0	0	

1/EXCLUDES: PRIOR MONTH NET TOTALS OF : 0 CASES; 0 RECIPIENTS; \$0.

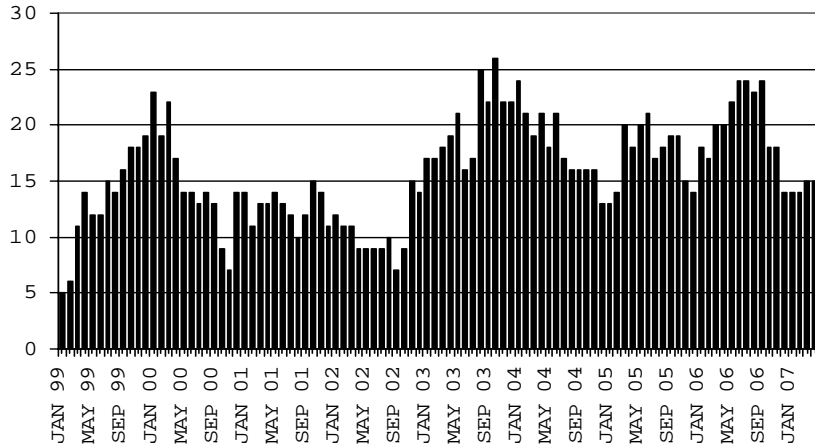
CHART 4

TUBERCULOSIS CONTROL PROGRAM

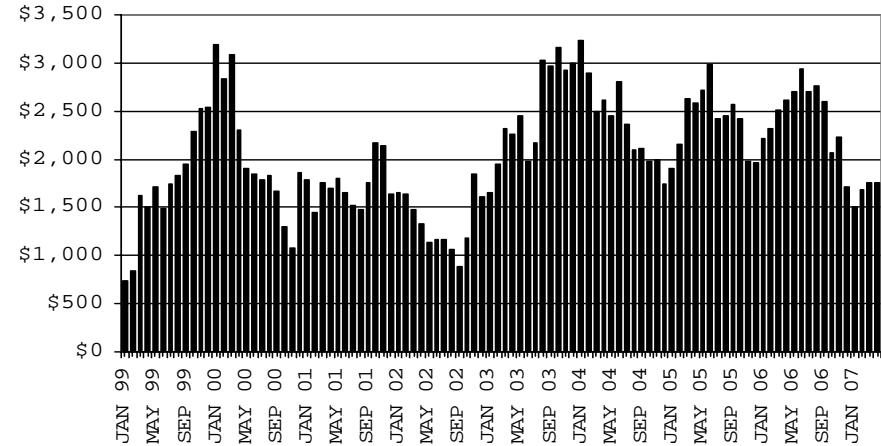
COMPARISON OF CASES, PAYMENTS & AVERAGE PAYMENTS

FOR 1999, 2000, 2001, 2002, 2003, 2004, 2005 & 2006

CASES



PAYMENTS



AVERAGE PAYMENT PER CASE

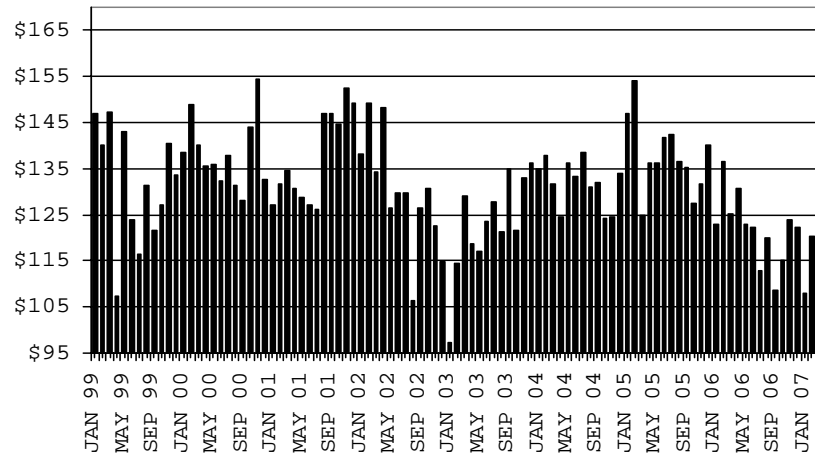


TABLE 5

**SUPPLEMENTAL PAYMENTS PROGRAM: ARIZONA 1,
 BASED ON HB 2535 SPP IS SUSPENDED FROM JULY, 2003 THROUGH JUNE, 2004
 CHANGE FROM**

	APRIL 2007			MARCH 2007		APRIL 2006	
	NUMBER OF PAYMENTS	TOTAL PAYMENTS	AVERAGE PAYMENT	NUMBER OF PAYMENTS	TOTAL PAYMENTS	NUMBER OF PAYMENTS	TOTAL PAYMENTS
ARIZONA	0	0	0	0	0	0	0
DISTRICT I							
MARICOPA	0	0	0	0	0	0	0
DISTRICT II							
PIMA	0	0	0	0	0	0	0
DISTRICT III							
APACHE	0	0	0	0	0	0	0
COCONINO	0	0	0	0	0	0	0
NAVAJO	0	0	0	0	0	0	0
YAVAPAI	0	0	0	0	0	0	0
DISTRICT IV							
LA PAZ	0	0	0	0	0	0	0
MOHAVE	0	0	0	0	0	0	0
YUMA	0	0	0	0	0	0	0
DISTRICT V							
GILA	0	0	0	0	0	0	0
PINAL	0	0	0	0	0	0	0
DISTRICT VI							
COCHISE	0	0	0	0	0	0	0
GRAHAM	0	0	0	0	0	0	0
GREENLEE	0	0	0	0	0	0	0
SANTA CRUZ	0	0	0	0	0	0	0

1/EXCLUDES: PRIOR MONTH NET TOTALS OF : 0 CASES (PERSONS); \$0.
 1/TABLE 5 IS BASED ON THE LOCATION OF THE OFFICE THAT PROCEEDS THE APPLICATION.

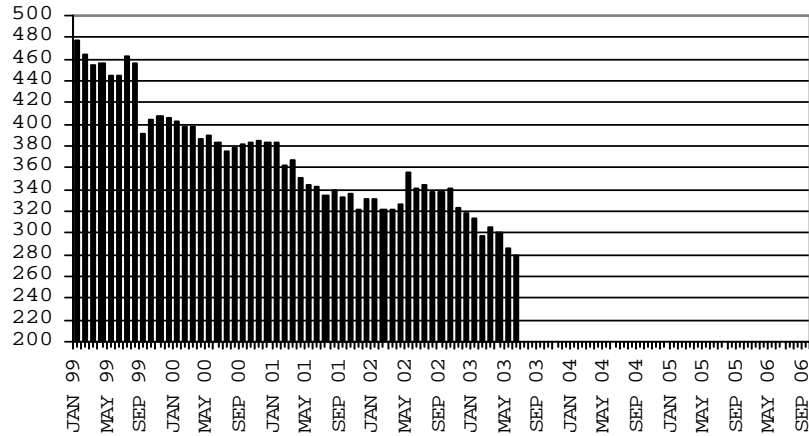
CHART 5

SUPPLEMENTAL PAYMENTS PROGRAM

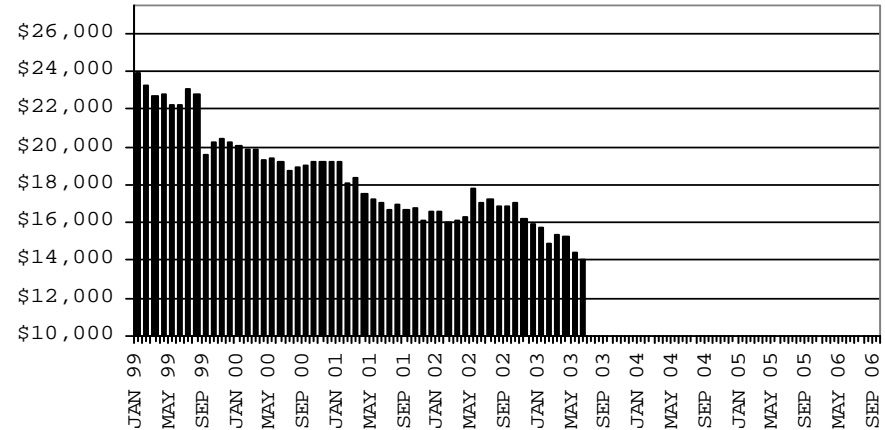
COMPARISON OF CASES, PAYMENTS & AVERAGE PAYMENTS

FOR 1999, 2000, 2001, 2002, 2003, 2004, 2005 & 2006

CASES



PAYMENTS



AVERAGE PAYMENT PER CASE

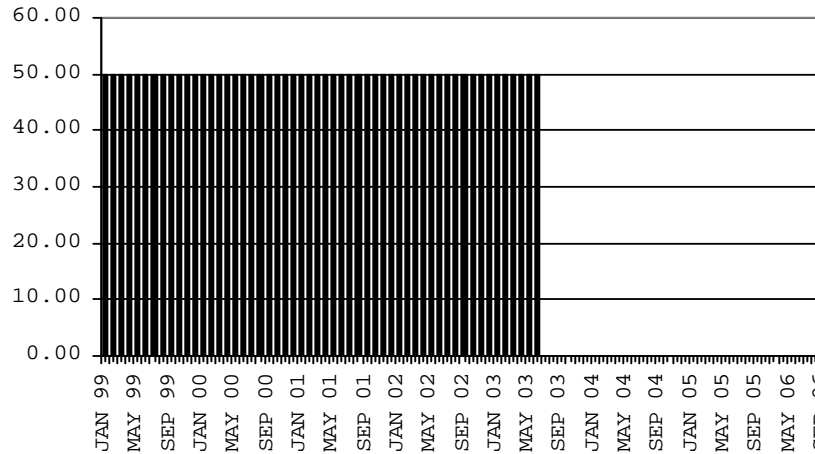


TABLE 6

FOOD STAMP PROGRAM: ARIZONA 1/

	CHANGE FROM										
	APRIL 2007					MARCH 2007			APRIL 2006		
	HOUSEHOLDS	PERSONS	TOTAL COUPON ISSUANCE	AVERAGE ALLOT./ HOUSEHOLD	AVERAGE ALLOT./ PERSON	HOUSEHOLDS	PERSONS	TOTAL COUPON ISSUANCE	HOUSEHOLDS	PERSONS	TOTAL COUPON ISSUANCE
ARIZONA	218,617	535,644	52,225,985	238.89	97.50	(1,576)	(1,820)	(155,818)	438	1,870	1,456,884
DISTRICT I											
MARICOPA	108,504	265,992	26,508,628	244.31	99.66	(238)	535	67,911	(907)	863	685,101
DISTRICT II											
PIMA	38,976	90,140	8,773,993	225.11	97.34	(488)	(870)	(68,795)	648	1,049	274,766
DISTRICT III											
APACHE	6,123	19,106	1,758,377	287.18	92.03	(81)	(197)	(18,707)	4	(233)	42,972
COCONINO	5,046	15,073	1,376,960	272.88	91.35	(117)	(303)	(34,522)	(76)	(611)	(20,739)
NAVAJO	8,857	24,760	2,331,907	263.28	94.18	(176)	(452)	(38,237)	121	(353)	70,264
YAVAPAI	6,085	12,280	1,188,878	195.38	96.81	(63)	(76)	(14,112)	(111)	(331)	16,864
DISTRICT IV											
LA PAZ	1,249	2,784	280,382	224.49	100.71	(29)	(38)	(7,889)	57	138	20,959
MOHAVE	9,833	20,874	2,078,261	211.36	99.56	(169)	(264)	(30,199)	183	587	102,233
YUMA	8,757	23,426	2,091,983	238.89	89.30	37	236	35,557	112	(130)	16,624
DISTRICT V											
GILA	14,090	34,937	3,430,439	243.47	98.19	(38)	64	8,361	726	1,991	267,727
PINAL	3,235	7,658	754,772	233.31	98.56	(46)	(95)	(12,890)	(48)	(248)	(17,910)
	10,855	27,279	2,675,667	246.49	98.09	8	159	21,251	774	2,239	285,637
DISTRICT VI											
COCHISE	11,097	26,272	2,406,177	216.83	91.59	(214)	(455)	(55,186)	(319)	(1,100)	(19,887)
GRAHAM	6,438	14,576	1,361,516	211.48	93.41	(121)	(185)	(29,541)	(128)	(448)	(5,042)
GREENLEE	2,017	4,813	446,502	221.37	92.77	(55)	(133)	(14,596)	(199)	(541)	(35,713)
SANTA CRUZ	260	555	52,557	202.14	94.70	(2)	(10)	(235)	(48)	(125)	(7,100)
	2,382	6,328	545,602	229.05	86.22	(36)	(127)	(10,814)	56	14	27,968

1/EXCLUDES: PRIOR MONTH NET TOTALS OF : 7,611 CASES; 20,211 RECIPIENTS; \$957,268.
 AGED CANCELATIONS: 0 CASES; 0 RECIPIENTS; 0.
 FS COUPON CONVERSIONS: 0 CASES; 0 RECIPIENTS; \$0.
 FS REINSTATED: 0 CASES; \$0.
 FS ZERO PAY: 0 CASES; 0 RECIPIENTS.

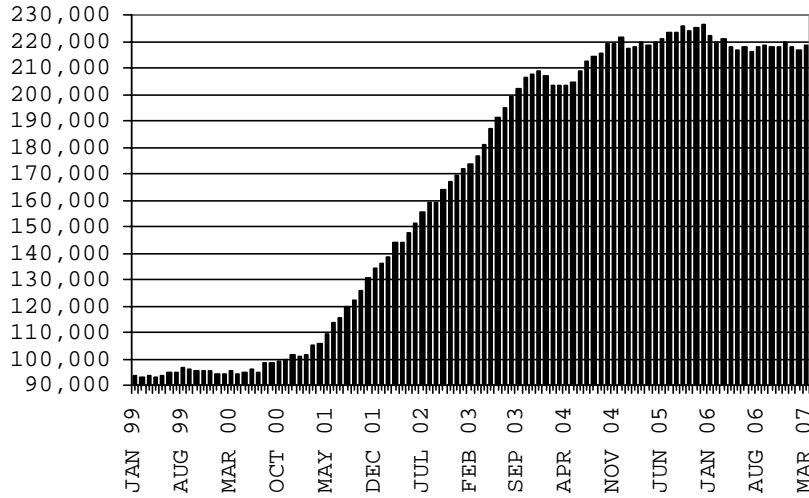
CHART 6

FOOD STAMPS PROGRAM

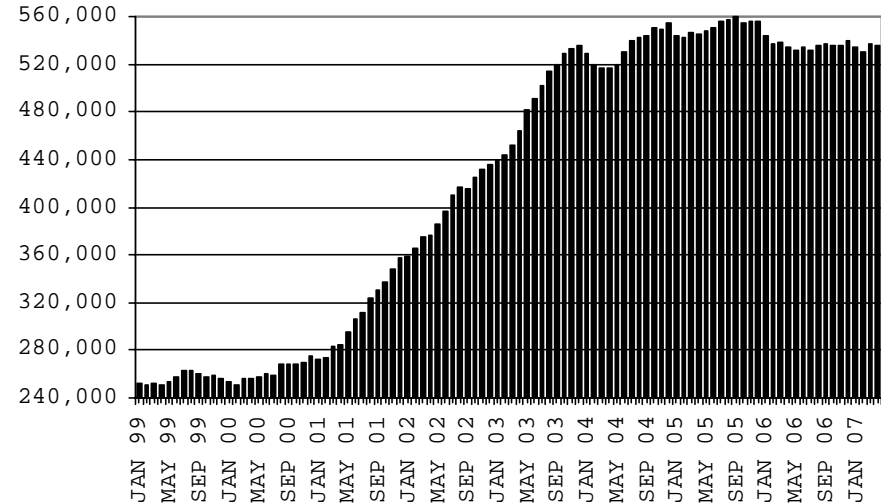
COMPARISON OF HOUSEHOLDS, RECIPIENTS, PAYMENTS & AVERAGE PAYMENTS

FOR 1999, 2000, 2001, 2002, 2003, 2004, 2005 & 2006

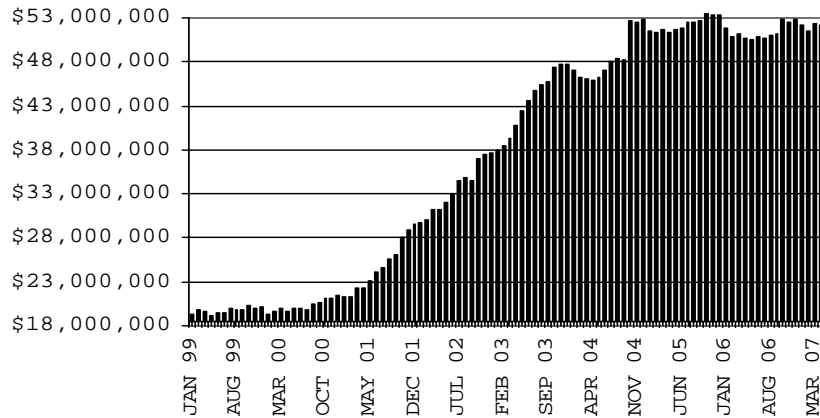
HOUSEHOLDS



RECIPIENTS



TOTAL PAYMENTS



AVERAGE PAYMENT PER HOUSEHOLD

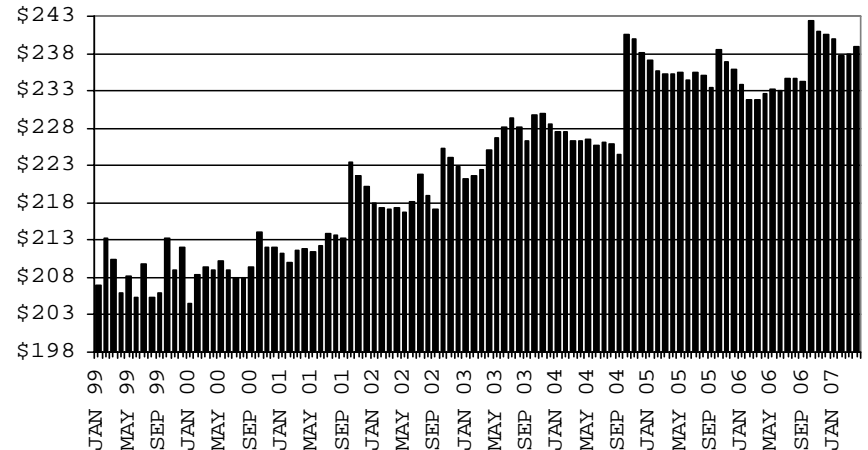


TABLE 7A
MEDICAL ASSISTANCE PROGRAM
RECIPIENTS

APRIL 2007

	SOBRA WOMAN 133% FPL	SOBRA CHILD	ADULT W/O CHILD 100% FPL	FOSTER CARE	1931 36% FPL	FEDERAL EMERGENCY SERVICES	INFANTS	ADULT W/O CHILD 40% FPL	MEDICAL W/SPEND DOWN	SOBRA WOMAN 100% FPL	SOBRA CHILD 100% FPL	TRANSITIONAL MEDICAL T1 - T4	1931 100% FPL	YATI	OTHER	TOTAL CASES
ARIZONA	11,213	58,703	35,985	8,849	248,169	84,042	49,347	79,261	5,223	3,322	151,554	44,379	72,078	226	20,042	872,393
DISTRICT I																
MARICOPA	5,710	32,163	15,110	4,445	127,654	64,305	29,650	33,908	2,912	1,632	83,047	21,133	33,058	118	9,860	464,705
DISTRICT II																
PIMA	1,703	9,035	7,110	2,492	38,800	10,500	6,873	14,252	660	539	24,247	7,242	13,096	68	3,596	140,213
DISTRICT III																
APACHE	265	1,381	938	38	10,462	101	975	4,108	56	89	3,874	1,126	2,325	0	319	26,057
COCONINO	418	1,352	1,156	116	7,091	544	1,154	2,790	112	84	3,592	1,235	2,121	8	322	22,095
NAVAJO	353	2,173	1,374	102	11,086	334	1,311	4,451	179	131	4,257	1,283	2,741	3	482	30,260
YAVAPAI	439	1,797	1,629	350	5,269	1,589	1,411	2,469	258	115	3,760	1,386	2,230	11	836	23,549
DISTRICT IV																
LA PAZ	49	231	217	17	1,236	188	170	546	29	14	627	160	344	0	132	3,960
MOHAVE	474	2,052	1,822	224	8,826	968	1,583	3,896	301	143	5,846	1,620	3,392	1	1,019	32,167
YUMA	534	2,322	2,073	253	9,643	2,178	1,918	2,912	231	170	7,342	3,907	4,347	3	1,059	38,892
DISTRICT V																
GILA	131	784	528	81	3,868	161	472	1,772	78	47	1,544	539	921	3	238	11,167
PINAL	623	3,304	1,641	390	13,116	1,841	2,128	4,459	214	169	6,432	2,230	3,356	5	1,018	40,926
DISTRICT VI																
COCHISE	254	1,115	1,269	238	6,087	703	862	2,172	107	92	3,482	1,220	2,100	4	670	20,375
GRAHAM	140	402	388	61	2,088	55	366	779	30	40	1,056	573	623	2	110	6,713
GREENLEE	21	35	49	11	321	7	55	106	5	5	147	61	73	0	25	921
SANTA CRUZ	99	557	681	31	2,622	568	419	641	51	52	2,301	664	1,351	0	356	10,393

TABLE 7B

MEDICAL ASSISTANCE PROGRAM

RECIPIENTS

CHANGE FROM

MARCH 2007

	SOBRA WOMAN 133% FPL	SOBRA CHILD	ADULT W/O CHILD 100% FPL	FOSTER CARE	1931 36% FPL	FEDERAL EMERGENCY SERVICES	INFANTS	ADULT W/O CHILD 40% FPL	MEDICAL W/SPEND DOWN	SOBRA WOMAN 100% FPL	SOBRA CHILD 100% FPL	TRANSITIONAL MEDICAL T1 - T4	1931 100% FPL	YATI	OTHER	TOTAL CASES
ARIZONA	72	(527)	(313)	131	1,200	74	(366)	111	(85)	90	2,284	(1,395)	940	4	(7)	2,213
DISTRICT I																
MARICOPA	60	(258)	(174)	79	1,074	160	(229)	235	(91)	27	1,615	(650)	593	2	69	2,512
DISTRICT II																
PIMA	(23)	(176)	(91)	31	27	(98)	(74)	(87)	7	6	205	(183)	67	2	(19)	(406)
DISTRICT III																
APACHE	2	(7)	(3)	8	(164)	(8)	(22)	17	(8)	6	87	(57)	24	0	(8)	(133)
COCONINO	(1)	(44)	(44)	(1)	18	10	6	(31)	15	(2)	(35)	(6)	(42)	4	(13)	(166)
NAVAJO	3	(21)	(19)	0	(30)	(10)	(13)	32	11	14	28	(118)	(1)	(1)	6	(119)
YAVAPAI	(2)	16	(4)	(2)	(26)	1	18	(15)	(4)	1	26	(62)	34	0	(10)	(29)
DISTRICT IV																
LA PAZ	(2)	(6)	(4)	1	(10)	(3)	(20)	(11)	(6)	(6)	22	7	(11)	0	7	(42)
MOHAVE	1	(18)	35	5	21	(38)	(16)	(66)	(7)	(5)	71	(16)	58	(1)	(36)	(12)
YUMA	1	(31)	54	10	294	46	(24)	38	4	19	184	(321)	143	0	26	443
DISTRICT V																
GILA	10	49	(29)	3	45	35	(20)	21	(9)	23	98	(14)	17	(4)	(26)	199
PINAL	0	3	(16)	(1)	(56)	8	(2)	7	3	10	54	(16)	(16)	(1)	(23)	(46)
	10	46	(13)	4	101	27	(18)	14	(12)	13	44	2	33	(3)	(3)	245
DISTRICT VI																
COCHISE	7	(3)	(6)	(2)	(50)	(3)	17	(20)	10	1	26	47	51	1	(7)	69
GRAHAM	16	(33)	(13)	(1)	(36)	(12)	9	(1)	(7)	11	3	(10)	2	1	1	(70)
GREENLEE	0	(5)	0	(1)	(5)	0	(2)	(12)	3	0	1	4	8	0	3	(6)
SANTA CRUZ	0	10	(15)	1	42	(6)	4	11	(3)	(5)	(47)	(16)	(3)	0	0	(27)

TABLE 7C
MEDICAL ASSISTANCE PROGRAM
RECIPIENTS

CHANGE FROM

APRIL 2006

	SOBRA WOMAN 133% FPL	SOBRA CHILD	ADULT W/O CHILD 100% FPL	FOSTER CARE	1931 36% FPL	FEDERAL EMERGENCY SERVICES	INFANTS	ADULT W/O CHILD 40% FPL	MEDICAL W/SPEND DOWN	SOBRA WOMAN 100% FPL	SOBRA CHILD 100% FPL	TRANSITIONAL MEDICAL T1 - T4	3E 1931 100% FPL	YATI	OTHER	TOTAL CASES
ARIZONA	147	887	(1,778)	356	(9,760)	357	481	(6,008)	(392)	124	3,808	(1,704)	(1,243)	55	1,346	(13,324)
DISTRICT I																
MARICOPA	(199)	697	(1,040)	160	(6,006)	930	(463)	(4,791)	(337)	100	2,219	(613)	(822)	27	560	(9,578)
DISTRICT II																
PIMA	57	(108)	(277)	122	(1,126)	82	321	(795)	(22)	(26)	699	(231)	(136)	12	247	(1,181)
DISTRICT III																
APACHE	16	10	70	(4)	(386)	(16)	7	154	0	(18)	100	56	24	0	29	42
COCONINO	54	(51)	(114)	8	(485)	(87)	(37)	(125)	(31)	(12)	(131)	(25)	(86)	2	32	(1,088)
NAVAJO	43	81	36	(35)	(324)	14	48	191	(42)	18	(75)	(150)	(75)	2	38	(230)
YAVAPAI	(2)	25	(35)	(5)	(269)	10	76	(140)	28	10	(72)	(334)	(112)	4	75	(741)
DISTRICT IV																
LA PAZ	16	6	(19)	(1)	62	(28)	(4)	(21)	10	1	28	33	9	0	24	116
MOHAVE	(49)	7	(75)	1	(587)	(51)	138	(284)	(57)	(27)	149	(245)	6	1	(11)	(1,084)
YUMA	53	(40)	7	61	(469)	(338)	24	(78)	72	(7)	231	112	101	0	168	(103)
DISTRICT V																
GILA	9	(33)	5	1	(252)	5	22	(81)	(6)	18	107	4	(50)	1	(34)	(284)
PINAL	107	417	(74)	63	508	15	251	226	(24)	35	586	44	(10)	2	112	2,258
DISTRICT VI																
COCHISE	16	(62)	(158)	(8)	(238)	(134)	41	(65)	7	17	49	(112)	(42)	2	63	(624)
GRAHAM	28	(10)	(38)	(7)	(262)	(31)	52	(148)	(11)	0	(11)	0	(81)	2	(3)	(520)
GREENLEE	(2)	(12)	0	1	(71)	0	6	(53)	2	4	(21)	(13)	(3)	0	(2)	(164)
SANTA CRUZ	0	(40)	(66)	(1)	145	(14)	(1)	2	19	11	(50)	(230)	34	0	48	(143)

CHART 7

MEDICAL ASSISTANCE PROGRAM COMPARISON OF RECIPIENTS FOR 1999, 2000, 2001, 2002, 2003, 2004, 2005 & 2006

TOTAL RECIPIENTS

