

**** STATISTICAL BULLETIN ****
ARIZONA DEPARTMENT OF ECONOMIC SECURITY
FAMILY ASSISTANCE ADMINISTRATION
BOX 6123, PHOENIX, ARIZONA 85005
PHONE (602) 542-3678

JUNE 2007

THIS ISSUE OF THE STATISTICAL BULLETIN COMPARES JUNE 2007 DATA FOR EACH OF THE INDICATED PROGRAMS WITH THE INFORMATION FOR MAY 2007 AND JUNE 2006. STATEWIDE SUMMARIES OF ACTIVITY WITHIN EACH OF THE SPECIFIC PROGRAMS FOR THIS REPORT PERIOD ARE DISCUSSED BELOW. THE TABLES COMPARE CURRENT AND PRIOR MONTH DATA. DISTRICT AND COUNTY COMPARISONS ARE PROVIDED WITHIN THIS BULLETIN

CASH ASSISTANCE (CA)

COMPARING TO MAY 2007, JUNE 2007 CASES INCREASED BY 140 (0.40%) TO 34,790. RECIPIENTS INCREASED BY 263 (0.35%) TO 74,542. PAYMENTS INCREASED BY \$10,407 (0.11%) TO \$9,281,523. AVERAGE PAYMENT PER CASE DECREASED BY \$0.77 (0.29%) TO \$266.79. PAYMENT PER RECIPIENT DECREASED BY \$0.30 (0.24%) TO \$124.51.

COMPARING TO JUNE 2006, JUNE 2007 CASES DECREASED BY 2,888 (7.66%). RECIPIENTS DECREASED BY 7,944 (9.63%). TOTAL PAYMENTS DECREASED BY \$904,672 (8.88%). THE AVERAGE PAYMENT PER CASE DECREASED BY \$3.56 (1.32%). THE AVERAGE PAYMENT PER RECIPIENT INCREASED BY \$1.02 (0.91%).

CASH ASSISTANCE UNEMPLOYED PARENT PROGRAM (CA-UP)

COMPARING TO MAY 2007, JUNE 2007 CASES INCREASED BY 8 (1.50%) TO 542. RECIPIENTS INCREASED BY 10 (0.50%) TO 2,023. PAYMENTS INCREASED BY \$779 (0.40%) TO \$193,266. AVERAGE PAYMENT PER CASE DECREASED BY \$3.88 (1.08%) TO \$356.58. PAYMENT PER RECIPIENT DECREASED BY \$0.09 (0.10%) TO \$95.53.

COMPARING TO JUNE 2006, JUNE 2007 CASES DECREASED BY 11 (1.99%). RECIPIENTS DECREASED BY 73 (3.48%). TOTAL PAYMENTS DECREASED BY \$5,474 (2.75%). THE AVERAGE PAYMENT PER CASE DECREASED BY \$2.81 (0.78%). THE AVERAGE PAYMENT PER RECIPIENT INCREASED BY \$0.71 (0.75%).

CASH ASSISTANCE WITH GRANT UNDER \$100 (CA-MOE)

COMPARING TO MAY 2007, JUNE 2007 CASES DECREASED BY 18 (2.52%) TO 696. RECIPIENTS DECREASED BY 53 (3.60%) TO 1,419. PAYMENTS DECREASED BY \$3,502 (6.66%) TO \$49,073. AVERAGE PAYMENT PER CASE DECREASED BY \$3.12 (4.24%) TO \$70.51. AVERAGE PAYMENT PER RECIPIENT DECREASED BY \$1.14 (3.19%) TO \$34.58.

COMPARING TO JUNE 2006, JUNE 2007 CASES DECREASED BY 55 (7.32%). RECIPIENTS DECREASED BY 165 (10.42%). TOTAL PAYMENTS DECREASED BY \$6,814 (12.19%). THE AVERAGE PAYMENT PER CASE DECREASED BY \$3.91 (5.25%). THE AVERAGE PAYMENT PER RECIPIENT DECREASED BY \$0.70 (1.98%).

CASH ASSISTANCE UNEMPLOYED PARENT PROGRAM WITH GRANT UNDER \$100 (CA-UP-MOE) NEW PROGRAM STARTING 7/01

COMPARING TO MAY 2007, JUNE 2007 CASES INCREASED BY 6 (75.00%) TO 14. RECIPIENTS INCREASED BY 18 (72.00%) TO 43. PAYMENTS INCREASED BY \$359 (72.38%) TO \$855. AVERAGE PAYMENT PER CASE DECREASED BY \$0.93 (1.50%) TO \$61.07. PAYMENT PER RECIPIENT INCREASED BY \$0.04 (0.20%) TO \$19.88.

COMPARING TO JUNE 2006, JUNE 2007 CASES INCREASED BY 7 (100.00%). RECIPIENTS INCREASED BY 16 (3.23%). TOTAL PAYMENTS INCREASED BY \$414 (93.88%). THE AVERAGE PAYMENT PER CASE DECREASED BY \$1.93 (3.06%). THE AVERAGE PAYMENT PER RECIPIENT INCREASED BY \$3.55 (21.74%).

GENERAL ASSISTANCE (GA)

COMPARING TO MAY 2007, JUNE 2007 CASES INCREASED BY 43 (3.39%) TO 1,312. RECIPIENTS INCREASED BY 46 (3.61%) TO 1,322. PAYMENTS INCREASED BY \$6,699 (3.46%) TO \$200,128. AVERAGE PAYMENT PER CASE INCREASED BY \$0.11 (0.07%) TO \$152.54. AVERAGE PAYMENT PER RECIPIENT DECREASED BY \$0.21 (0.14%) TO \$151.38.

COMPARING TO JUNE 2006, JUNE 2007 CASES INCREASED BY 146 (12.52%). RECIPIENTS INCREASED BY 148 (12.61%). TOTAL PAYMENTS INCREASED BY \$20,922 (11.67%). THE AVERAGE PAYMENT PER CASE DECREASED BY \$1.15 (0.75%). THE AVERAGE PAYMENT PER RECIPIENT DECREASED BY \$1.27 (0.83%).

TUBERCULOSIS CONTROL PROGRAM (TC)

COMPARING TO MAY 2007, JUNE 2007 CASES DECREASED BY 2 (16.67%) TO 10. RECIPIENTS DECREASED BY 2 (16.67%) TO 10. PAYMENTS DECREASED BY \$184 (13.20%) TO \$1,210. AVERAGE PAYMENT PER CASE INCREASED BY \$4.83 (4.16%) TO \$121.00. AVERAGE PAYMENT PER RECIPIENT INCREASED BY \$4.83 (4.16%) TO \$121.00.

COMPARING TO JUNE 2006, JUNE 2007 CASES DECREASED BY 14 (58.33%). RECIPIENTS DECREASED BY 14 (58.33%). TOTAL PAYMENTS DECREASED BY \$1,727 (58.80%). THE AVERAGE PAYMENT PER CASE DECREASED BY \$1.38 (1.12%). THE AVERAGE PAYMENT PER RECIPIENT DECREASED BY \$1.38 (1.12%).

SUPPLEMENTAL PAYMENTS PROGRAM (SPP)

AS A RESULT OF ARIZONA'S OMNIBUS BUDGET RECONCILIATION BILL, HB 2535, THE SUPPLEMENTAL PAYMENT PROGRAM (SPP) IS BEING SUSPENDED EFFECTIVE JULY, 2003 THROUGH JUNE, 2004.

FOOD STAMP PROGRAM (FS)

COMPARING TO MAY 2007, JUNE 2007 FOOD STAMP HOUSEHOLDS INCREASED BY 4,330 (1.96%) TO 225,305. PERSONS RECEIVING FOOD STAMPS INCREASED BY 10,203 (1.89%) TO 551,465. TOTAL COUPON ISSUANCE INCREASED BY \$1,029,703 (1.96%) TO \$53,688,761. THE AVERAGE HOUSEHOLD ALLOTMENT DECREASED BY \$0.01 (0.01%) TO \$238.29. THE AVERAGE ALLOTMENT PER PERSON INCREASED BY \$0.07 (0.07%) TO \$97.36.

COMPARING TO JUNE 2006, JUNE 2007 FOOD STAMP HOUSEHOLDS INCREASED BY 7,300 (3.35%), PERSONS RECEIVING FOOD STAMPS INCREASED BY 17,285 (3.24%). TOTAL COUPON ISSUANCE INCREASED BY \$2,907,824 (5.73%). THE AVERAGE ALLOTMENT PER HOUSEHOLD INCREASED BY \$5.36 (2.30%). THE AVERAGE ALLOTMENT PER PERSON INCREASED BY \$2.30 (2.42%).

MEDICAL ASSISTANCE PROGRAM (MA) NEW TABLE INCLUDES PROP. 204 CATEGORIES

COMPARING TO MAY 2007, JUNE 2007 TOTAL RECIPIENTS TOTAL RECIPIENTS INCREASED BY 3,385 (0.39%). SOBRA WOMEN AT 140% FPL INCREASED BY 8 (0.07%). SOBRA CHILDREN INCREASED BY 2,021 (3.45%). ADULTS W/O CHILD AT 100% INCREASED BY 252 (0.70%). FOSTER CARE INCREASED BY 157 (1.76%). 1931 AT 36% FPL INCREASED BY 119 (0.05%). EMERGENCY SERVICES DECREASED BY 45 (0.05%). INFANTS INCREASED BY 256 (0.52%). ADULT W/O CHILD AT 140% INCREASED BY 925 (1.16%). MEDICAL W/SPEND DOWN DECREASED BY 142 (2.73%). SOBRA WOMAN AT 100% INCREASED BY 51 (1.51%). SOBRA CHILD AT 100% INCREASED BY 907 (0.59%). TRANSITIONAL MEDICAL DECREASED BY 1,765 (3.98%). 1931 AT 100% INCREASED BY 494 (0.68%). YATI DECREASED BY 7 (3.08%). ALL OTHER CATEGORIES INCREASED BY 154 (0.76%).

COMPARING TO JUNE 2006, JUNE 2007 TOTAL RECIPIENTS TOTAL RECIPIENTS DECREASED BY 1,498 (0.17%). SOBRA WOMEN AT 140% FPL INCREASED BY 255 (2.30%). SOBRA CHILDREN INCREASED BY 2,260 (3.88%). ADULTS W/O CHILD AT 100% DECREASED BY 1,168 (3.13%). FOSTER CARE INCREASED BY 469 (5.45%). 1931 AT 36% FPL DECREASED BY 7,240 (2.85%). EMERGENCY SERVICES INCREASED BY 1,187 (1.43%). INFANTS INCREASED BY 456 (0.93%). ADULT W/O CHILD AT 140% DECREASED BY 3,497 (4.16%). MEDICAL W/SPEND DOWN DECREASED BY 570 (10.11%). SOBRA WOMAN AT 100% INCREASED BY 234 (7.30%). SOBRA CHILD AT 100% INCREASED BY 5,510 (3.71%). TRANSITIONAL MEDICAL DECREASED BY 1,248 (2.85%). 1931 AT 100% INCREASED BY 210 (0.29%). YATI INCREASED BY 46 (26.44%). ALL OTHER CATEGORIES INCREASED BY 1,598 (8.49%).

TANF SUMMARY

TABLES 1, 1A, 1B, & 1C: ARIZONA 1/

	JUNE 2007							MAY 2007			CHANGE FROM JUNE 2006		
	FAMILIES (CASES)	PERSONS (RECIP.)	ADULTS	CHILDREN	TOTAL PAYMENTS	AVERAGE	AVERAGE	FAMILIES (CASES)	PERSONS (RECIP.)	TOTAL PAYMENTS	FAMILIES (CASES)	PERSONS (RECIP.)	TOTAL PAYMENTS
						PAYMENT/ CASE	PAYMENT/ RECIP.						
ARIZONA	36,042	78,027	18,739	59,288	9,524,717	264.27	122.07	136	238	8,043	(2,947)	(8,166)	(916,546)
DISTRICT I													
MARICOPA	19,605	42,928	9,527	33,401	5,215,764	266.04	121.50	(14)	(13)	(18,425)	(1,719)	(4,403)	(542,846)
DISTRICT II													
PIMA	6,949	14,641	3,744	10,897	1,821,978	262.19	124.44	56	151	8,233	(615)	(1,700)	(181,404)
DISTRICT III													
APACHE	121	267	86	181	31,149	257.43	116.66	(3)	(16)	(1,132)	(4)	3	(146)
COCONINO	262	543	137	406	65,890	251.49	121.34	0	(10)	1,048	7	(8)	2,155
NAVAJO	1,370	3,379	962	2,417	383,238	279.74	113.42	(10)	(58)	(5,694)	(80)	(249)	(26,752)
YAVAPAI	625	1,202	257	945	154,652	247.44	128.66	(21)	(60)	(5,127)	(42)	(119)	(7,776)
DISTRICT IV													
LA PAZ	240	512	165	347	62,871	261.96	122.79	9	6	1,333	(30)	(99)	(7,570)
MOHAVE	1,360	2,817	792	2,025	352,419	259.13	125.10	20	50	5,244	(44)	(100)	(6,019)
YUMA	1,195	2,627	575	2,052	316,226	264.62	120.38	83	188	23,199	(136)	(462)	(47,007)
DISTRICT V													
GILA	730	1,519	511	1,008	192,475	263.66	126.71	1	(11)	1,230	(65)	(289)	(26,075)
PINAL	1,917	4,279	1,138	3,141	506,162	264.04	118.29	12	29	2,755	16	(28)	(623)
DISTRICT VI													
COCHISE	971	1,921	473	1,448	244,662	251.97	127.36	(8)	(46)	(6,195)	(128)	(371)	(38,661)
GRAHAM	405	788	249	539	101,077	249.57	128.27	10	15	1,083	(60)	(194)	(19,060)
GREENLEE	51	109	26	83	13,873	272.02	127.28	(2)	(5)	(562)	(9)	(25)	(2,116)
SANTA CRUZ	241	495	97	398	62,281	258.43	125.82	3	18	1,053	(38)	(122)	(12,646)

1/EXCLUDES: PRIOR MONTH NET TOTALS OF 1,174 CASES; 3,099 RECIPIENTS; \$323,613.
 1/GRANT DIVERSION TOTALS OF: 0 CASES;\$0.
 ZERO PAY TOTALS OF 0 CASES; 0 RECIPIENTS.

	CURRENT MO. CASES	CURRENT MO. RECIP.	CURRENT MO. DOLLARS	PRIOR MO. CASES	PRIOR MO. RECIP.	PRIOR MO. DOLLARS
PASQUAYAOUI	262	780	\$83,829	20	58	3,939
WM APACHE	754	1,991	\$225,661	15	56	3,869
SALT RIVER	96	316	\$28,539	5	21	738
NAVAJO	0	0	\$0	0	0	0
HOPI	146	433	\$36,476	3	9	304
TOTAL	1,258	3,520	\$374,505	43	144	\$8,850

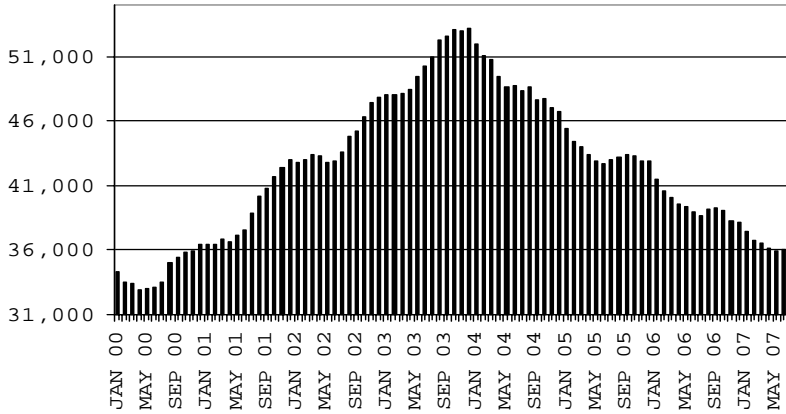
TANF SUMMARY

TABLES 1, 1A, 1B, & 1C

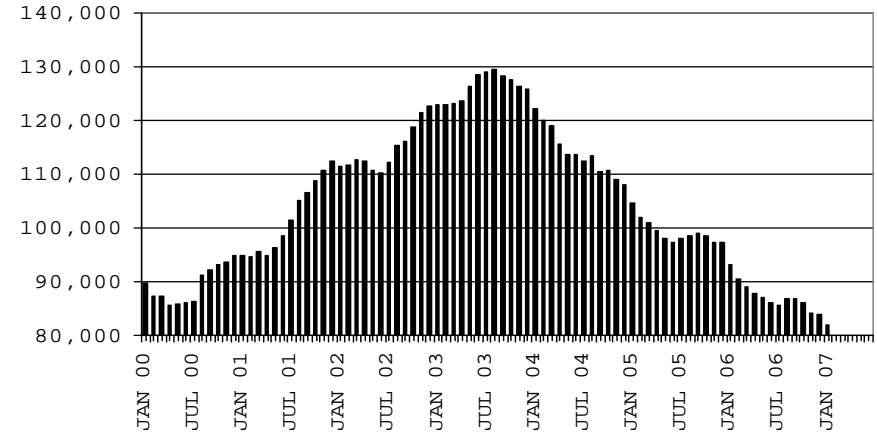
COMPARISON OF CASES, RECIPIENTS, PAYMENTS & AVERAGE PAYMENTS

FOR 2000, 2001, 2002, 2003, 2004, 2005 & 2006

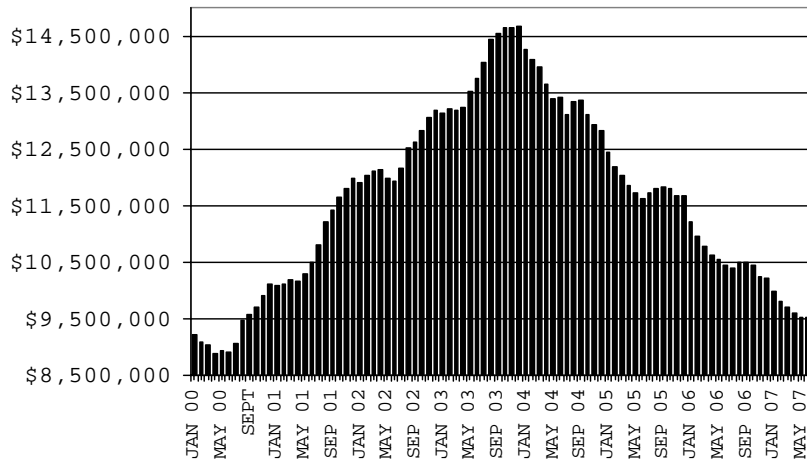
CASES



RECIPIENTS



PAYMENTS



AVERAGE PAYMENTS PER RECIPIENT

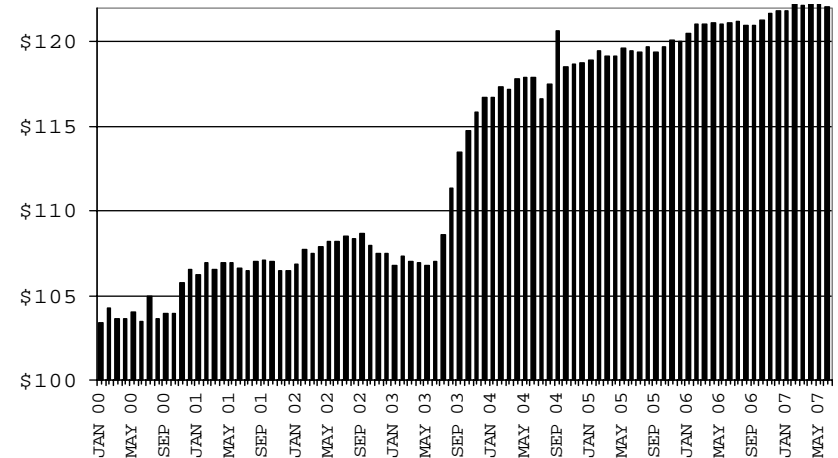


TABLE 1
CASH ASSISTANCE: ARIZONA 1/

	JUNE 2007							CHANGE FROM			MAY 2007			JUNE 2006			
	FAMILIES	(RECIP.)	ADULTS	CHILDREN	TOTAL	AVERAGE	AVERAGE	FAMILIES	PERSONS	TOTAL	FAMILIES	PERSONS	TOTAL	FAMILIES	PERSONS	TOTAL	
	(CASES)				PAYMENTS	PAYMENT/ CASE	PAYMENT/ RECIP.	(CASES)	(RECIP.)	PAYMENTS	(CASES)	(RECIP.)	PAYMENTS	(CASES)	(RECIP.)	PAYMENTS	
ARIZONA	34,790	74,542	17,450	57,092	9,281,523	266.79	124.51	140	263	10,407	(2,888)	(7,944)	(904,672)				
DISTRICT I																	
MARICOPA	19,004	41,326	9,028	32,298	5,112,132	269.00	123.70	0	11	(16,194)	(1,765)	(4,561)	(555,056)				
DISTRICT II																	
PIMA	6,718	13,999	3,486	10,513	1,779,112	264.83	127.09	51	140	9,737	(554)	(1,522)	(171,676)				
DISTRICT III																	
APACHE	111	241	75	166	29,534	266.07	122.55	2	(2)	(614)	(2)	8	353				
COCONINO	254	524	130	394	64,822	255.20	123.71	4	5	1,758	5	(10)	1,818				
NAVAJO	1,292	3,084	821	2,263	355,686	275.30	115.33	(6)	(35)	(3,931)	(70)	(188)	(20,180)				
YAVAPAI	604	1,161	246	915	151,582	250.96	130.56	(17)	(50)	(4,752)	(37)	(96)	(7,512)				
DISTRICT IV																	
LA PAZ	224	464	144	320	59,328	264.86	127.86	3	(8)	1,133	(35)	(111)	(7,894)				
MOHAVE	1,306	2,657	721	1,936	339,479	259.94	127.77	17	49	4,252	(54)	(142)	(11,111)				
YUMA	1,144	2,490	520	1,970	306,410	267.84	123.06	73	169	21,196	(133)	(447)	(45,230)				
DISTRICT V																	
GILA	683	1,380	440	940	180,441	264.19	130.75	(1)	(31)	(832)	(75)	(297)	(25,691)				
PINAL	1,832	4,016	1,031	2,985	487,243	265.96	121.33	8	14	1,451	19	(9)	(113)				
DISTRICT VI																	
COCHISE	946	1,858	451	1,407	240,421	254.14	129.40	(1)	(23)	(5,423)	(99)	(294)	(34,134)				
GRAHAM	390	759	238	521	99,922	256.21	131.65	4	5	1,356	(47)	(146)	(14,740)				
GREENLEE	50	107	26	81	13,836	276.72	129.31	(1)	(2)	(215)	(8)	(23)	(2,010)				
SANTA CRUZ	232	476	93	383	61,575	265.41	129.36	4	21	1,485	(33)	(106)	(11,496)				

1/EXCLUDES: PRIOR MONTH NET TOTALS OF: 1,079 CASES; 2,731 RECIPIENTS; \$295,214.
GRANT DIVERSION TOTALS OF: 0 CASES; \$0
ZERO PAY TOTALS OF 0 CASES; 0 RECIPIENTS.

CASES WITH GRANT UNDER \$100 (SEE TABLE 1B).

	CURRENT MO. CASES	CURRENT MO. RECIP.	CURRENT MO. DOLLARS	PRIOR MO. CASES	PRIOR MO. RECIP	PRIOR MO. DOLLARS
PASQUAYAQUI	251	733	79,343	19	53	3,392
WM APACHE	700	1,772	204,569	12	40	2,434
SALT RIVER	96	316	28,539	5	21	738
NAVAJO	0	0	0	0	0	0
HOPAI	146	433	36,476	3	9	304
TOTAL	1,193	3,254	348,927	39	123	6,868

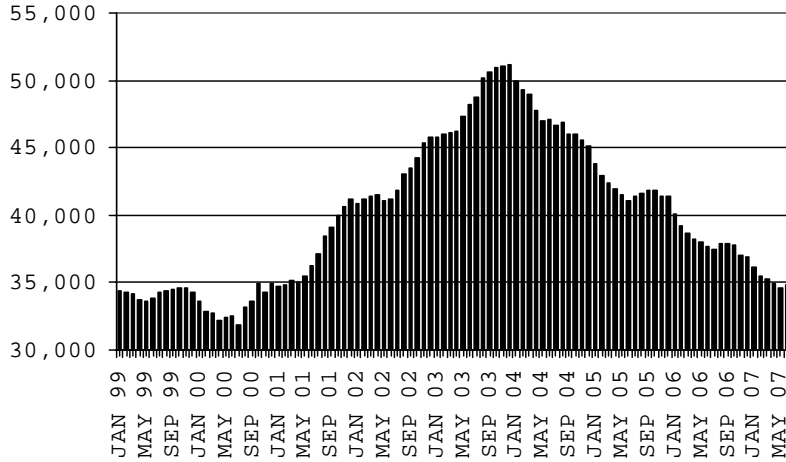
CHART 1

CASH ASSISTANCE PROGRAM

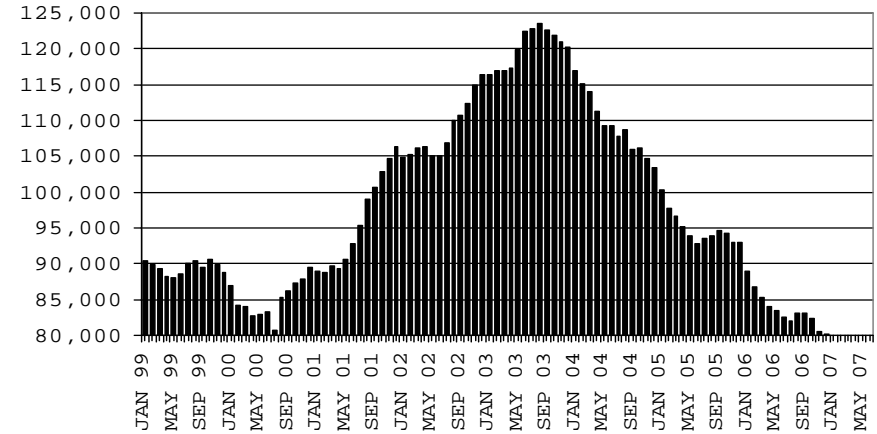
COMPARISON OF CASES, RECIPIENTS, PAYMENTS & AVERAGE PAYMENTS

FOR 1999, 2000, 2001, 2002, 2003, 2004, 2005 & 2006

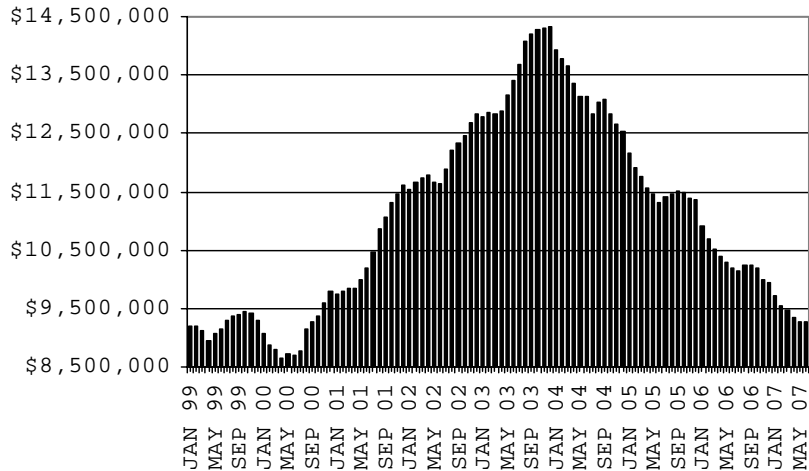
CASES



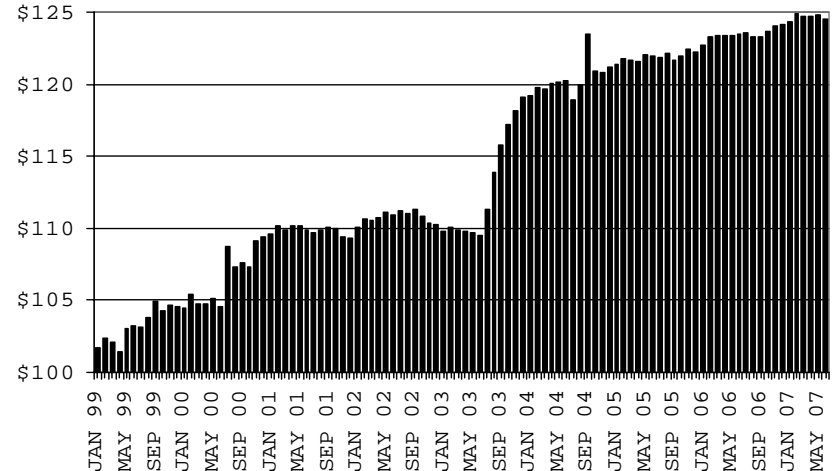
RECIPIENTS



PAYMENTS



AVERAGE PAYMENTS PER RECIPIENT



**TABLE 1A
CA-UP**

CASH ASSISTANCE UNEMPLOYED PARENT PROGRAM: ARIZONA 1/

	JUNE 2007							CHANGE FROM			MAY 2007			JUNE 2006		
	FAMILIES (CASES)	PERSONS (RECIP.)	ADULTS	CHILDREN	TOTAL PAYMENTS	AVERAGE PAYMENT/ CASE	AVERAGE PAYMENT/ RECIP.	FAMILIES (CASES)	PERSONS (RECIP.)	TOTAL PAYMENTS	FAMILIES (CASES)	PERSONS (RECIP.)	TOTAL PAYMENTS			
ARIZONA	542	2,023	892	1,131	193,266	356.58	95.53	8	10	779	(11)	(73)	(5,474)			
DISTRICT I																
MARICOPA	217	800	307	493	77,276	356.11	96.60	1	22	379	30	132	13,257			
DISTRICT II																
PIMA	92	347	164	183	33,295	361.90	95.95	1	(8)	(1,047)	(16)	(71)	(6,182)			
DISTRICT III																
APACHE	3	12	6	6	1,125	375.00	93.75	(2)	(7)	(320)	(2)	(6)	(565)			
COCONINO	1	4	2	2	418	418.00	104.50	(3)	(13)	(933)	0	0	69			
NAVAJO	71	280	136	144	27,157	382.49	96.99	(2)	(21)	(1,389)	(10)	(65)	(6,497)			
YAVAPAI	5	15	7	8	1,619	323.80	107.93	(2)	(4)	(666)	(1)	(3)	(251)			
DISTRICT IV																
LA PAZ	9	34	16	18	3,114	346.00	91.59	0	1	(125)	1	3	331			
MOHAVE	30	119	54	65	10,874	362.47	91.38	3	1	938	18	65	5,638			
YUMA	23	79	38	41	7,853	341.43	99.41	7	15	1,899	(4)	(19)	(1,680)			
DISTRICT V																
GILA	35	111	63	48	11,271	322.03	101.54	8	28	2,747	4	(5)	(581)			
PINAL	46	182	83	99	15,921	346.11	87.48	3	16	1,526	(8)	(22)	(590)			
DISTRICT VI																
COCHISE	7	27	13	14	2,751	393.00	101.89	(3)	(11)	(823)	(11)	(40)	(3,618)			
GRAHAM	1	6	2	4	278	278.00	46.33	(2)	(5)	(705)	(11)	(39)	(4,145)			
GREENLEE	0	0	0	0	0	0.00	0.00	(1)	(3)	(347)	0	0	0			
SANTA CRUZ	2	7	1	6	314	157.00	44.86	0	(1)	(355)	(1)	(3)	(660)			

1/EXCLUDES: PRIOR MONTH NET TOTALS OF: 68 CASES; 277 RECIPIENTS; \$26,826.
GRANT DIVERSION TOTALS OF: 0 CASES; \$0.
ZERO PAY TOTALS OF 0 CASES; 0 RECIPIENTS.

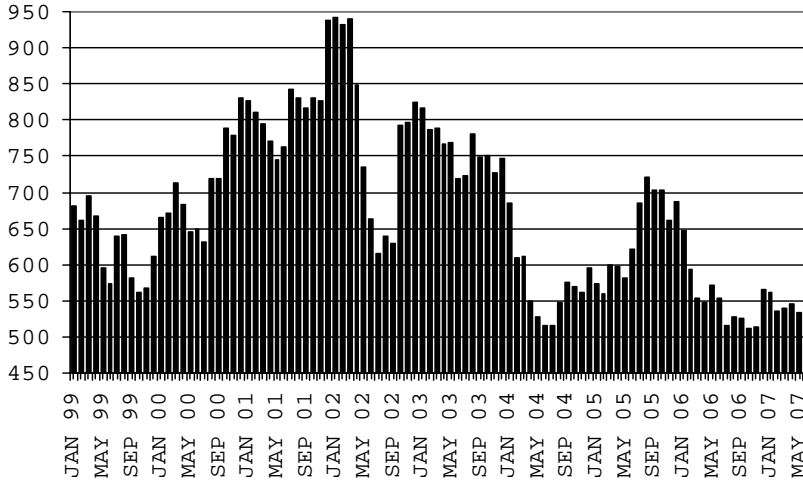
CASES WITH GRANT UNDER \$100 (SEE TABLE 1C).

	CURRENT MO. CASES	CURRENT MO. RECIP.	CURRENT MO. DOLLARS	PRIOR MO. CASES	PRIOR MO. RECIP.	PRIOR MO. DOLLARS
PASQUAYUQUI	11	47	4,486	1	5	547
WM APACHE	54	219	21,092	3	16	1,435
SALT RIVER	0	0	0	0	0	0
NAVAJO	0	0	0	0	0	0
HOPÍ	0	0	0	0	0	0
TOTAL	65	266	25,578	4	21	1,982

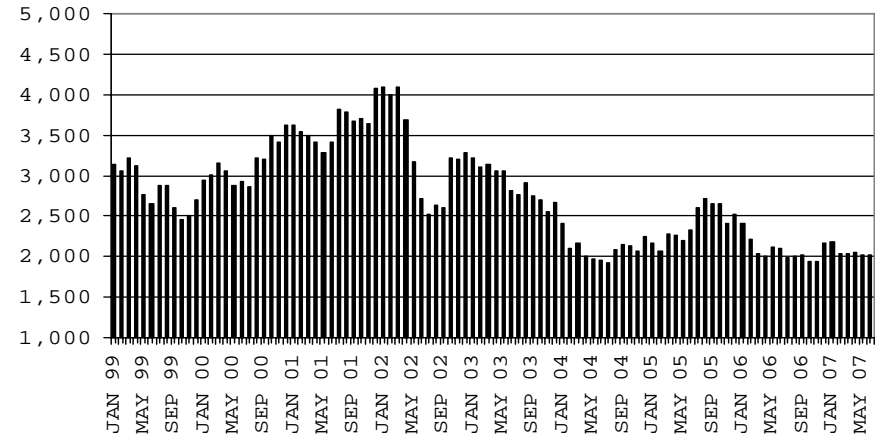
CHART 1A

CASH ASSISTANCE UNEMPLOYED PARENT PROGRAM COMPARISON OF CASES, RECIPIENTS, PAYMENTS & AVERAGE PAYMENTS FOR 1999, 2000, 2001, 2002, 2003, 2004, 2005 & 2006

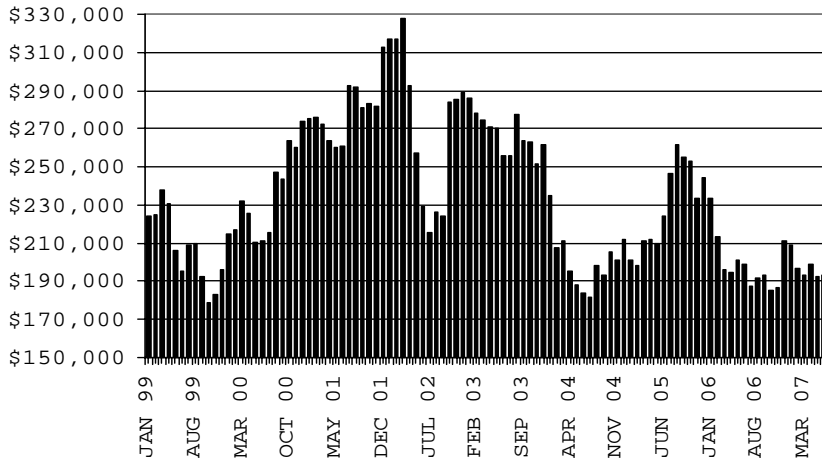
CASES



RECIPIENTS



PAYMENTS



AVERAGE PAYMENTS PER RECIPIENT

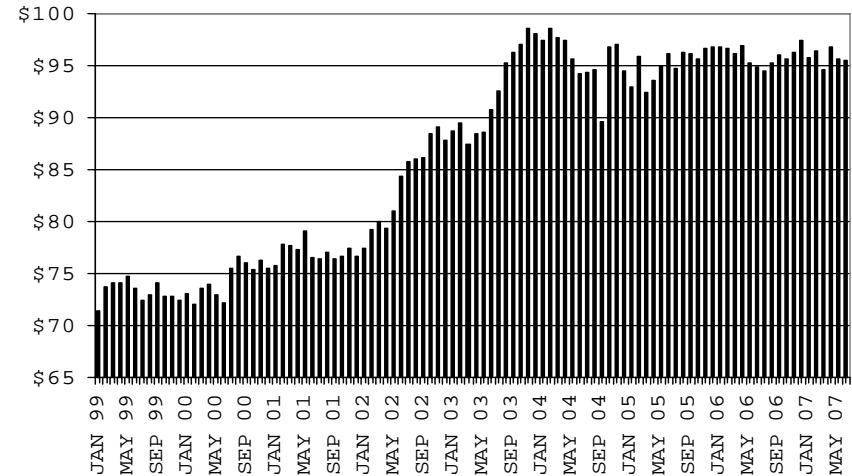


TABLE 1B 1/

CASH ASSISTANCE: ARIZONA
 CASES WITH GRANT UNDER \$100

	JUNE 2007								CHANGE FROM			JUNE 2006		
					AVERAGE	AVERAGE	MAY 2007			JUNE 2006				
	FAMILIES (CASES)	PERSONS (RECIP.)	ADULTS	CHILDREN	TOTAL PAYMENTS	PAYMENT/ CASE	PAYMENT/ RECIP.	FAMILIES (CASES)	PERSONS (RECIP.)	TOTAL PAYMENTS	FAMILIES (CASES)	PERSONS (RECIP.)	TOTAL PAYMENTS	
ARIZONA	696	1,419	374	1,045	49,073	70.51	34.58	(18)	(53)	(3,502)	(55)	(165)	(6,814)	
DISTRICT I														
MARICOPA	380	791	186	605	26,115	68.72	33.02	(16)	(47)	(2,675)	16	27	(1,068)	
DISTRICT II														
PIMA	133	275	84	191	9,187	69.08	33.41	2	11	(619)	(49)	(117)	(3,800)	
DISTRICT III														
APACHE	6	12	3	9	406	67.67	33.83	(3)	(6)	(184)	(1)	(1)	(18)	
COCONINO	7	15	5	10	650	92.86	43.33	(1)	(2)	223	2	2	268	
NAVAJO	7	15	5	10	395	56.43	26.33	(2)	(2)	(374)	0	4	(75)	
YAVAPAI	16	26	4	22	1,451	90.69	55.81	(2)	(6)	291	(4)	(20)	(13)	
DISTRICT IV														
LA PAZ	7	14	5	9	429	61.29	30.64	6	13	325	4	9	(7)	
MOHAVE	23	38	15	23	2,018	87.74	53.11	(1)	(3)	6	(8)	(21)	(503)	
YUMA	28	58	17	41	1,963	70.11	33.84	3	4	104	1	4	(97)	
DISTRICT V														
GILA	12	28	8	20	763	63.58	27.25	(6)	(8)	(685)	6	13	197	
PINAL	39	81	24	57	2,998	76.87	37.01	1	(1)	(222)	5	3	80	
DISTRICT VI														
COCHISE	18	36	9	27	1,490	82.78	41.39	(4)	(12)	51	(18)	(37)	(909)	
GRAHAM	12	16	6	10	779	64.92	48.69	6	8	334	(4)	(16)	(273)	
GREENLEE	1	2	0	2	37	37.00	18.50	0	0	0	(1)	(2)	(106)	
SANTA CRUZ	7	12	3	9	392	56.00	32.67	(1)	(2)	(77)	(4)	(13)	(490)	

EXCLUDES: PRIOR MONTH NET TOTALS OF 0 CASES; 0 RECIPIENTS; \$0.

CHART 1B

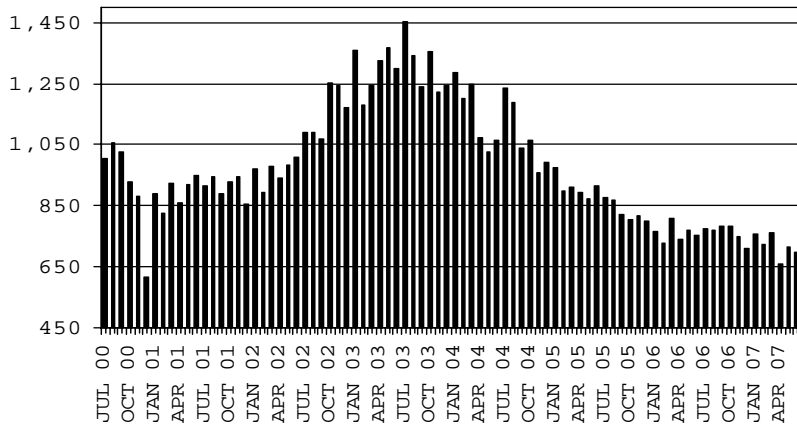
CASH ASSISTANCE PROGRAM

CASES WITH GRANT UNDER \$100

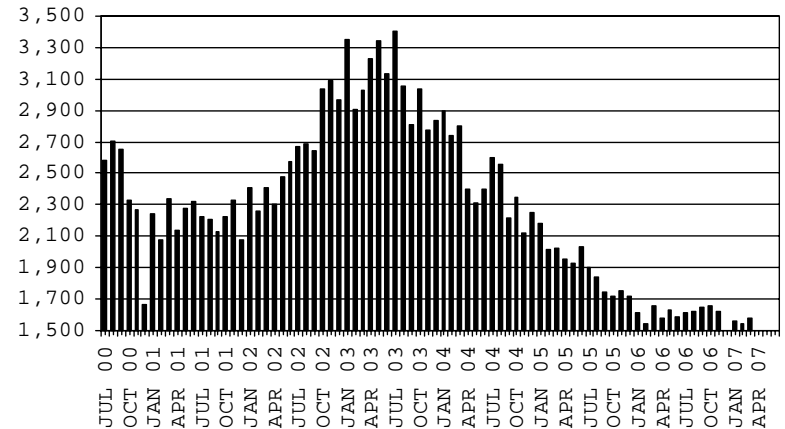
COMPARISON OF CASES, RECIPIENTS, PAYMENTS & AVERAGE PAYMENTS

FOR 2000, 2001, 2002, 2003, 2004, 2005 & 2006

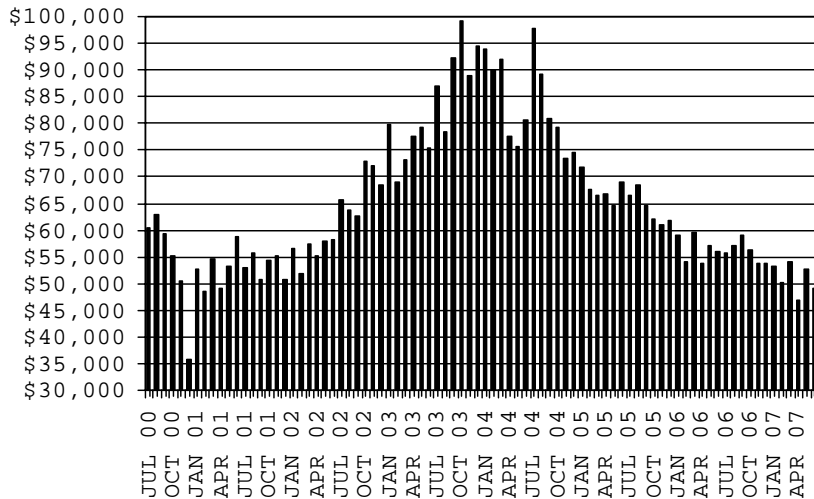
CASES



RECIPIENTS



PAYMENTS



AVERAGE PAYMENTS PER RECIPIENT

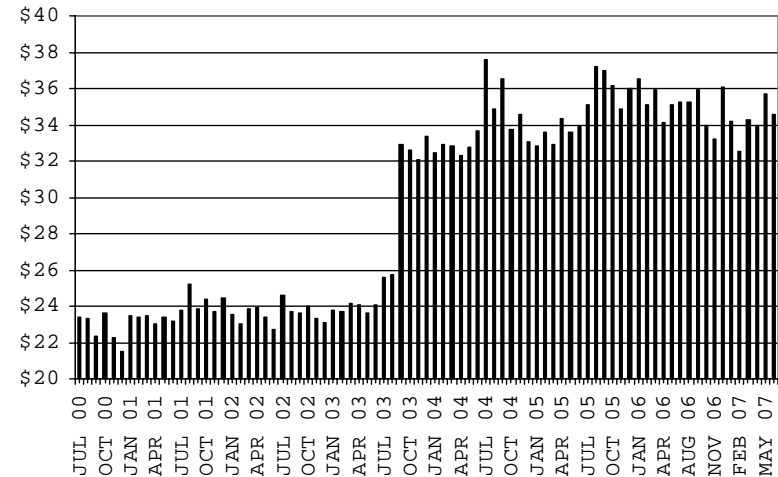


TABLE 1C 1/

CASH ASSISTANCE UNEMPLOYED PARENT PROGRAM: ARIZONA
 CASES WITH GRANT UNDER \$100

	JUNE 2007							CHANGE FROM			JUNE 2006		
					AVERAGE	AVERAGE							
	FAMILIES (CASES)	PERSONS (RECIP.)	ADULTS	CHILDREN	TOTAL PAYMENTS	PAYMENT/ CASE	PAYMENT/ RECIP.	FAMILIES (CASES)	PERSONS (RECIP.)	TOTAL PAYMENTS	FAMILIES (CASES)	PERSONS (RECIP.)	TOTAL PAYMENTS
ARIZONA	14	43	23	20	855	61.07	19.88	6	18	359	7	16	414
DISTRICT I													
MARICOPA	4	11	6	5	241	60.25	21.91	1	1	65	0	(1)	21
DISTRICT II													
PIMA	6	20	10	10	384	64.00	19.20	2	8	162	4	10	254
DISTRICT III													
APACHE	1	2	2	0	84	84.00	42.00	0	(1)	(14)	1	2	84
COCONINO	0	0	0	0	0	0.00	0.00	0	0	0	0	0	0
NAVAJO	0	0	0	0	0	0.00	0.00	0	0	0	0	0	0
YAVAPAI	0	0	0	0	0	0.00	0.00	0	0	0	0	0	0
DISTRICT IV													
LA PAZ	0	0	0	0	0	0.00	0.00	0	0	0	0	0	0
MOHAVE	1	3	2	1	48	48.00	16.00	1	3	48	0	(2)	(43)
YUMA	0	0	0	0	0	0.00	0.00	0	0	0	0	0	0
DISTRICT V													
GILA	0	0	0	0	0	0.00	0.00	0	0	0	0	0	0
PINAL	0	0	0	0	0	0.00	0.00	0	0	0	0	0	0
DISTRICT VI													
COCHISE	0	0	0	0	0	0.00	0.00	0	0	0	0	0	0
GRAHAM	2	7	3	4	98	49.00	14.00	2	7	98	2	7	98
GREENLEE	0	0	0	0	0	0.00	0.00	0	0	0	0	0	0
SANTA CRUZ	0	0	0	0	0	0.00	0.00	0	0	0	0	0	0

EXCLUDES: PRIOR MONTH NET TOTALS OF 27 CASES; 91 RECIPIENTS; \$1,573.

8/13/2007

CHART 1C

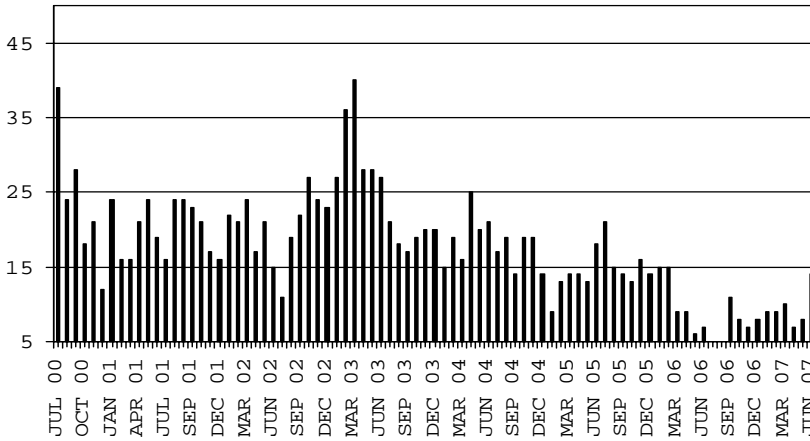
CASH ASSISTANCE UNEMPLOYED PARENT PROGRAM

CASES WITH GRANT UNDER \$100

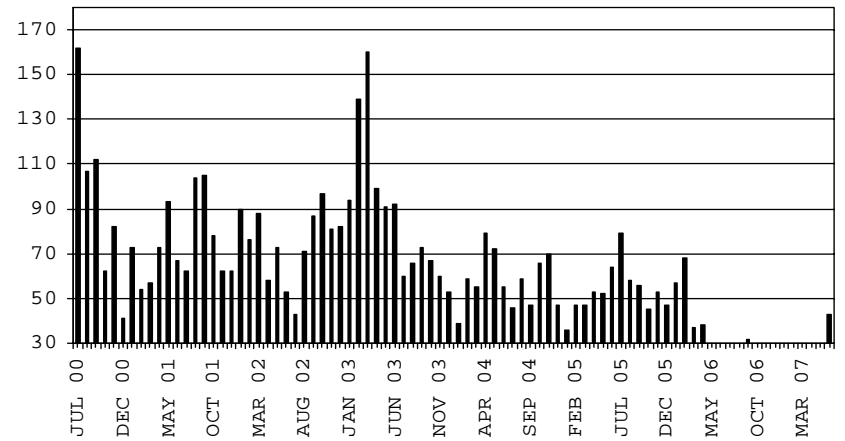
COMPARISON OF CASES, RECIPIENTS, PAYMENTS & AVERAGE PAYMENTS

FOR 2000, 2001, 2002, 2003, 2004, 2005 & 2006

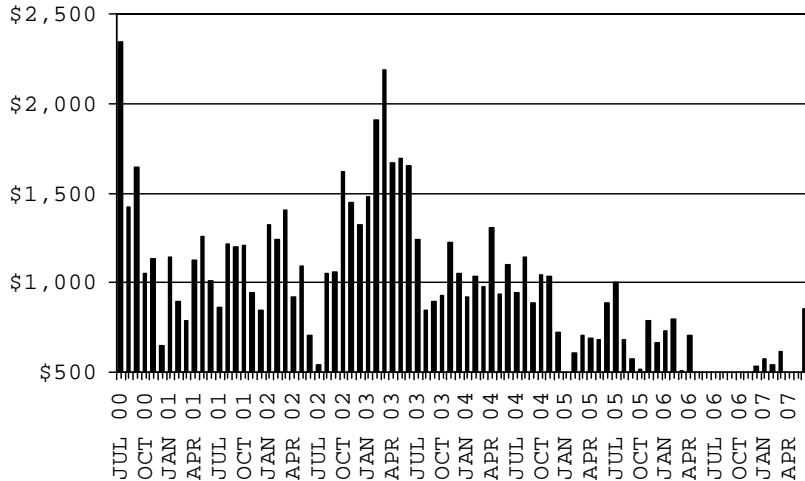
CASES



RECIPIENTS



PAYMENTS



AVERAGE PAYMENTS PER RECIPIENT

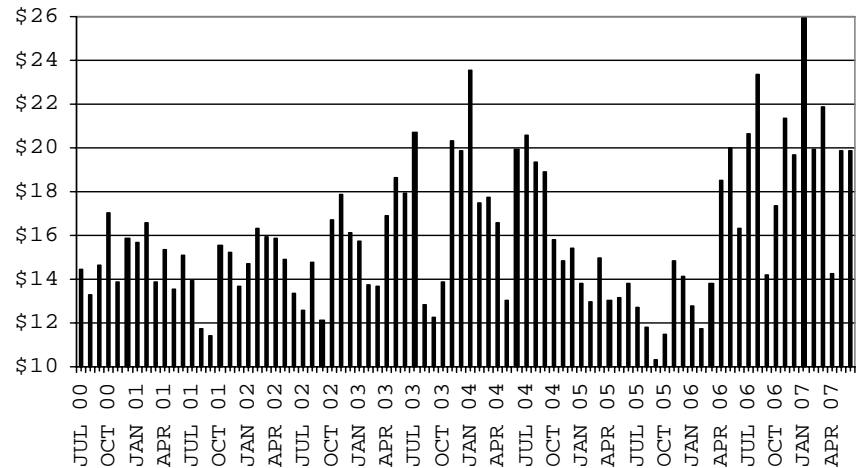


TABLE 2
GENERAL ASSISTANCE: ARIZONA 1/

	CHANGE FROM										
	JUNE 2007					MAY 2007			JUNE 2006		
	NUMBER OF CASES	PERSONS (RECIP.)	TOTAL PAYMENTS	AVERAGE PAYMENT/ CASE	AVERAGE PAYMENT/ RECIP.	NUMBER OF CASES	PERSONS (RECIP.)	TOTAL PAYMENTS	NUMBER OF CASES	PERSONS (RECIP.)	TOTAL PAYMENTS
ARIZONA	1,312	1,322	200,128	152.54	151.38	43	46	6,699	146	148	20,922
DISTRICT I											
MARICOPA	551	552	84,890	154.07	153.79	42	42	6,644	125	124	19,954
DISTRICT II											
PIMA	337	339	49,936	148.18	147.30	3	4	209	16	17	734
DISTRICT III											
APACHE	10	12	1,657	165.70	138.08	(3)	(3)	(324)	2	3	431
COCONINO	21	22	3,252	154.86	147.82	0	0	29	1	1	317
NAVAJO	29	29	4,692	161.79	161.79	2	1	286	1	0	345
YAVAPAI	71	72	10,968	154.48	152.33	4	5	473	24	25	3,228
DISTRICT IV											
LA PAZ	11	11	1,643	149.36	149.36	2	2	281	1	1	(22)
MOHAVE	73	74	11,363	155.66	153.55	(4)	(3)	(827)	(18)	(17)	(1,969)
YUMA	37	38	4,983	134.68	131.13	(9)	(9)	(1,473)	0	1	(768)
DISTRICT V											
GILA	19	19	2,832	149.05	149.05	(3)	(3)	(238)	(6)	(6)	(1,073)
PINAL	93	94	14,440	155.27	153.62	6	7	1,008	19	19	3,302
DISTRICT VI											
COCHISE	42	42	6,553	156.02	156.02	(1)	(1)	4	(16)	(17)	(2,973)
GRAHAM	14	14	2,292	163.71	163.71	3	3	454	0	0	(65)
GREENLEE	1	1	173	173.00	173.00	1	1	173	0	0	0
SANTA CRUZ	3	3	454	151.33	151.33	0	0	0	(3)	(3)	(519)

1/EXCLUDES: PRIOR MONTH NET TOTALS OF : 235 CASES; 239 RECIPIENTS; \$55,453.
REFUGEE RESETTLEMENT PROGRAM: 87 CASES; 177 RECIPIENTS; \$23,220.

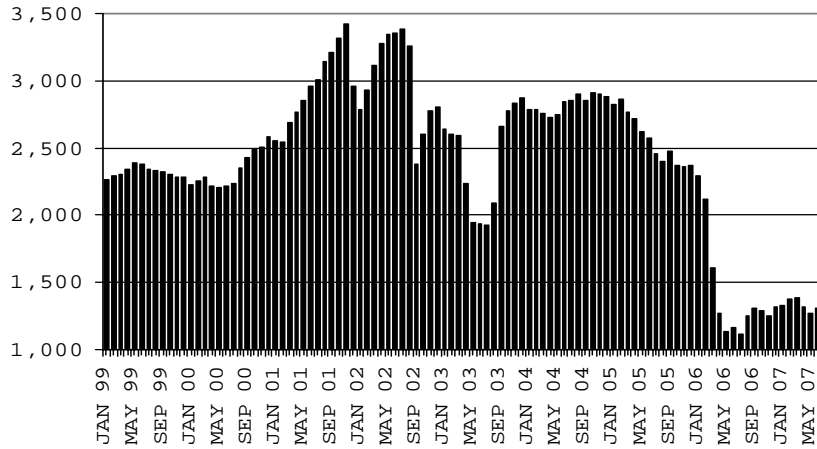
CHART 2

GENERAL ASSISTANCE PROGRAM

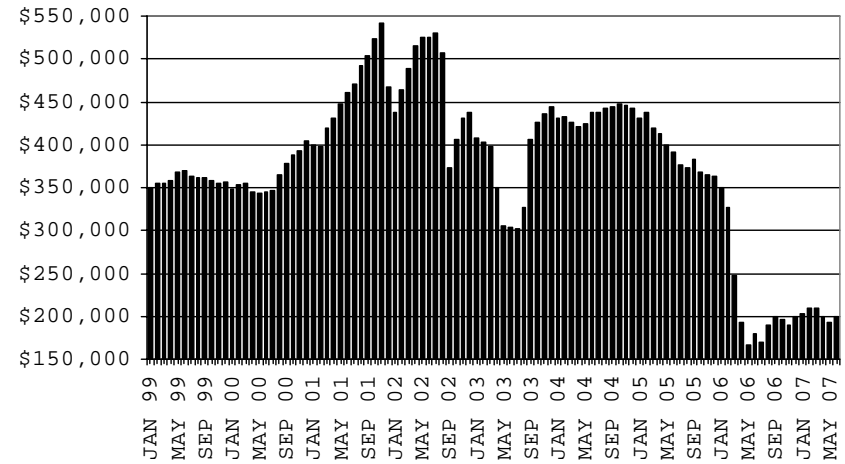
COMPARISON OF CASES, PAYMENTS & AVERAGE PAYMENTS

FOR 1999, 2000, 2001, 2002, 2003, 2004, 2005 & 2006

CASES



PAYMENTS



AVERAGE PAYMENT PER CASE

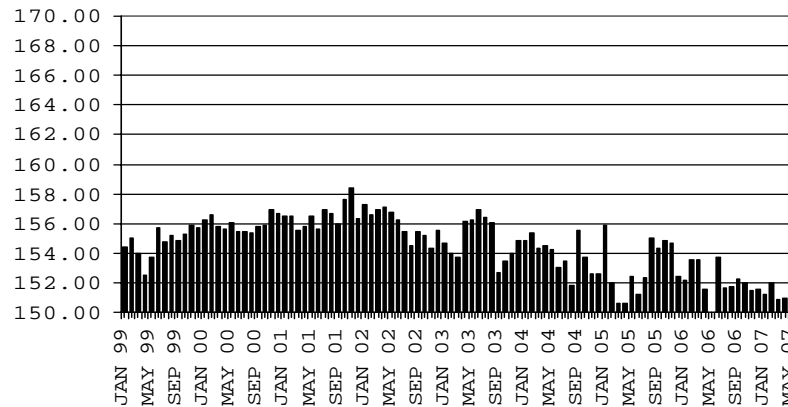


TABLE 4

TUBERCULOSIS CONTROL: ARIZONA 1/

	JUNE 2007					CHANGE FROM					
						MAY 2007			JUNE 2006		
	NUMBER OF CASES	PERSONS (RECIP.)	TOTAL PAYMENTS	AVERAGE PAYMENT/ CASE	AVERAGE PAYMENT/ RECIP.	NUMBER OF CASES	PERSONS (RECIP.)	TOTAL PAYMENTS	NUMBER OF CASES	PERSONS (RECIP.)	TOTAL PAYMENTS
ARIZONA	10	10	1,210	121.00	121.00	(2)	(2)	(184)	(14)	(14)	(1,727)
DISTRICT I											
MARICOPA	10	10	1,210	121.00	121.00	(2)	(2)	(184)	(12)	(12)	(1,381)
DISTRICT II											
PIMA	0	0	0	0.00	0.00	0	0	0	(2)	(2)	(346)
DISTRICT III											
APACHE	0	0	0	0.00	0.00	0	0	0	0	0	0
COCONINO	0	0	0	0.00	0.00	0	0	0	0	0	0
NAVAJO	0	0	0	0.00	0.00	0	0	0	0	0	0
YAVAPAI	0	0	0	0.00	0.00	0	0	0	0	0	0
DISTRICT IV											
LA PAZ	0	0	0	0.00	0.00	0	0	0	0	0	0
MOHAVE	0	0	0	0.00	0.00	0	0	0	0	0	0
YUMA	0	0	0	0.00	0.00	0	0	0	0	0	0
DISTRICT V											
GILA	0	0	0	0.00	0.00	0	0	0	0	0	0
PINAL	0	0	0	0.00	0.00	0	0	0	0	0	0
DISTRICT VI											
COCHISE	0	0	0	0.00	0.00	0	0	0	0	0	0
GRAHAM	0	0	0	0.00	0.00	0	0	0	0	0	0
GREENLEE	0	0	0	0.00	0.00	0	0	0	0	0	0
SANTA CRUZ	0	0	0	0.00	0.00	0	0	0	0	0	0

1/EXCLUDES: PRIOR MONTH NET TOTALS OF : 0 CASES; 0 RECIPIENTS; \$0.

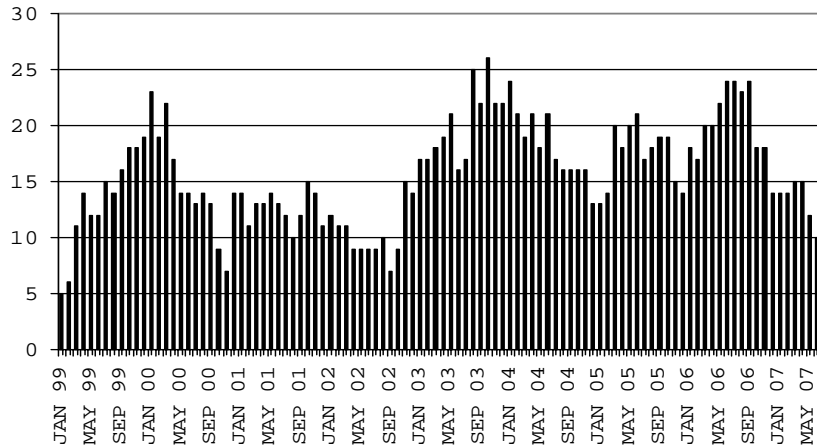
CHART 4

TUBERCULOSIS CONTROL PROGRAM

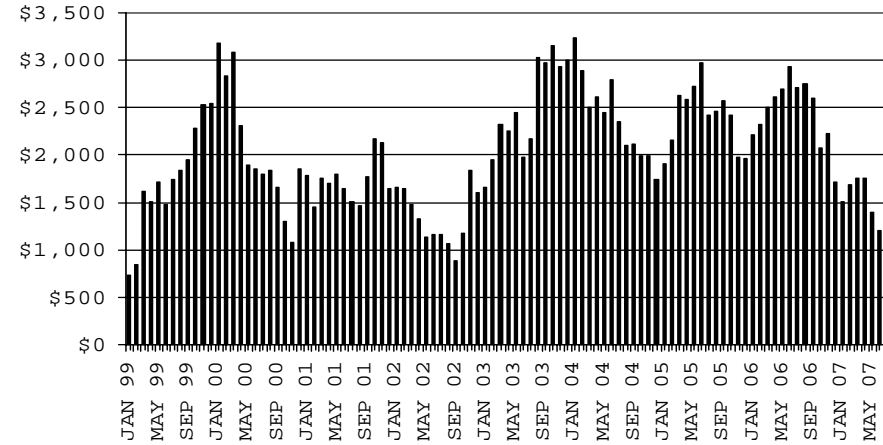
COMPARISON OF CASES, PAYMENTS & AVERAGE PAYMENTS

FOR 1999, 2000, 2001, 2002, 2003, 2004, 2005 & 2006

CASES



PAYMENTS



AVERAGE PAYMENT PER CASE

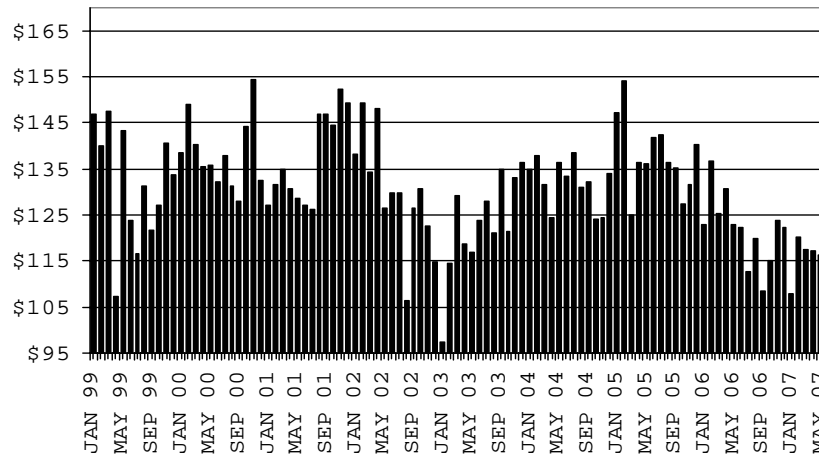


TABLE 5

**SUPPLEMENTAL PAYMENTS PROGRAM: ARIZONA 1/
 BASED ON HB 2535 SPP IS SUSPENDED FROM JULY, 2003 THROUGH JUNE, 2004**

CHANGE FROM

	JUNE 2007			MAY 2007		JUNE 2006	
	NUMBER OF PAYMENTS	TOTAL PAYMENTS	AVERAGE PAYMENT	NUMBER OF PAYMENTS	TOTAL PAYMENTS	NUMBER OF PAYMENTS	TOTAL PAYMENTS
ARIZONA	0	0	0	0	0	0	0
DISTRICT I							
MARICOPA	0	0	0	0	0	0	0
DISTRICT II							
PIMA	0	0	0	0	0	0	0
DISTRICT III							
APACHE	0	0	0	0	0	0	0
COCONINO	0	0	0	0	0	0	0
NAVAJO	0	0	0	0	0	0	0
YAVAPAI	0	0	0	0	0	0	0
DISTRICT IV							
LA PAZ	0	0	0	0	0	0	0
MOHAVE	0	0	0	0	0	0	0
YUMA	0	0	0	0	0	0	0
DISTRICT V							
GILA	0	0	0	0	0	0	0
PINAL	0	0	0	0	0	0	0
DISTRICT VI							
COCHISE	0	0	0	0	0	0	0
GRAHAM	0	0	0	0	0	0	0
GREENLEE	0	0	0	0	0	0	0
SANTA CRUZ	0	0	0	0	0	0	0

1/EXCLUDES: PRIOR MONTH NET TOTALS OF : 0 CASES (PERSONS); \$0.
 1/TABLE 5 IS BASED ON THE LOCATION OF THE OFFICE THAT PROCEEDS THE APPLICATION.

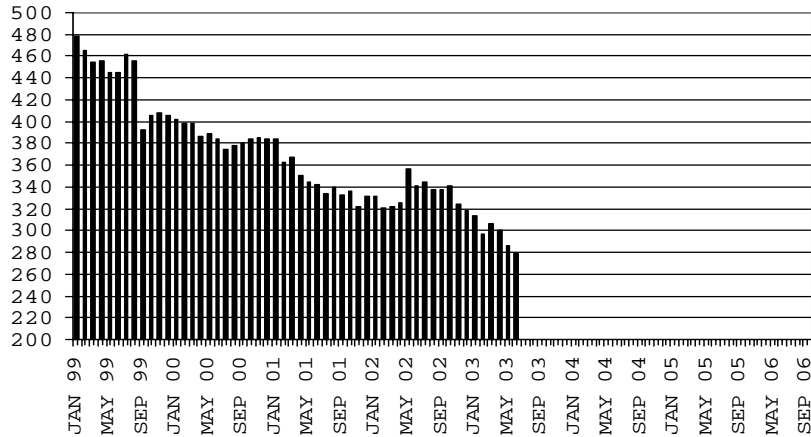
CHART 5

SUPPLEMENTAL PAYMENTS PROGRAM

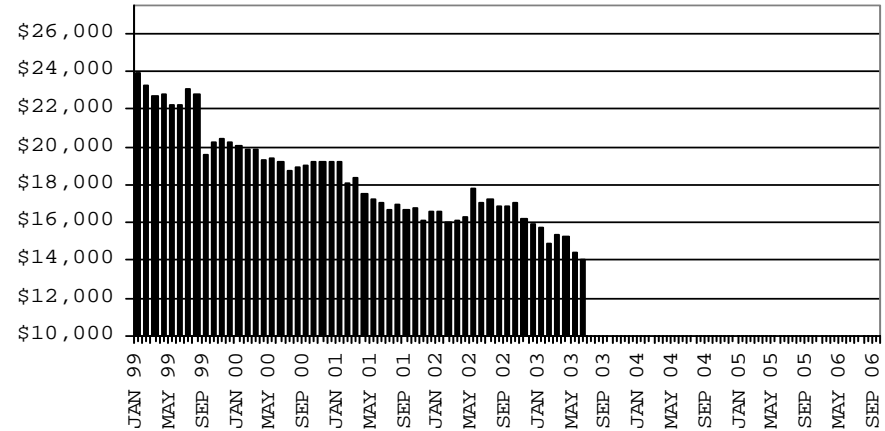
COMPARISON OF CASES, PAYMENTS & AVERAGE PAYMENTS

FOR 1999, 2000, 2001, 2002, 2003, 2004, 2005 & 2006

CASES



PAYMENTS



AVERAGE PAYMENT PER CASE

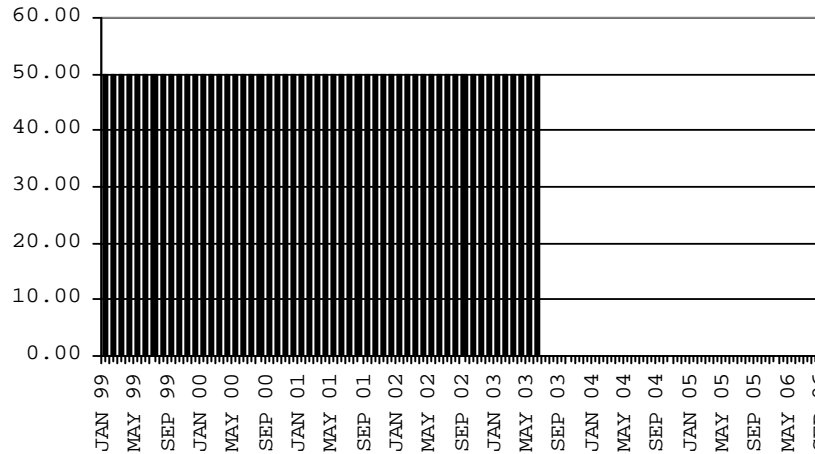


TABLE 6

FOOD STAMP PROGRAM: ARIZONA 1/

	CHANGE FROM										
	JUNE 2007					MAY 2007			JUNE 2006		
	HOUSEHOLDS	PERSONS	TOTAL COUPON ISSUANCE	AVERAGE ALLOT./ HOUSEHOLD	AVERAGE ALLOT./ PERSON	HOUSEHOLDS	PERSONS	TOTAL COUPON ISSUANCE	HOUSEHOLDS	PERSONS	TOTAL COUPON ISSUANCE
ARIZONA	225,305	551,465	53,688,761	238.29	97.36	4,330	10,203	1,029,703	7,300	17,285	2,907,824
DISTRICT I											
MARICOPA	111,636	272,738	27,124,752	242.97	99.45	2,139	4,736	490,723	3,389	9,941	1,559,138
DISTRICT II											
PIMA	40,052	92,562	9,032,132	225.51	97.58	646	1,486	174,851	1,373	2,800	460,190
DISTRICT III											
APACHE	6,133	19,157	1,766,577	288.04	92.22	127	417	60,121	(72)	(439)	8,360
COCONINO	5,111	15,210	1,386,173	271.21	91.14	76	167	5,643	81	(111)	38,995
NAVAJO	9,183	25,821	2,405,343	261.93	93.15	200	669	54,931	411	550	111,277
YAVAPAI	6,149	12,334	1,187,458	193.11	96.28	(5)	(26)	(14,557)	73	(12)	49,153
DISTRICT IV											
LA PAZ	1,267	2,832	280,048	221.03	98.89	26	82	6,305	69	163	17,967
MOHAVE	10,122	21,522	2,143,843	211.80	99.61	203	410	38,890	567	1,529	206,958
YUMA	9,653	26,297	2,362,877	244.78	89.85	338	960	79,547	304	505	73,932
DISTRICT V											
GILA	3,343	7,866	771,955	230.92	98.14	109	189	19,204	44	(26)	5,356
PINAL	11,316	28,385	2,773,503	245.10	97.71	284	738	67,545	1,117	3,040	353,882
DISTRICT VI											
COCHISE	6,601	14,799	1,384,190	209.69	93.53	131	214	25,293	39	(312)	11,315
GRAHAM	2,033	4,843	450,458	221.57	93.01	(1)	13	5,607	(143)	(430)	(23,811)
GREENLEE	263	554	52,657	200.22	95.05	0	(16)	(1,341)	(45)	(125)	(8,918)
SANTA CRUZ	2,443	6,545	566,795	232.01	86.60	57	164	16,941	93	212	44,030

1/EXCLUDES: PRIOR MONTH NET TOTALS OF : 8,062 CASES; 21,532 RECIPIENTS; \$1,065,464.
 AGED CANCELLATIONS: 0 CASES; 0 RECIPIENTS; 0.
 FS COUPON CONVERSIONS: 0 CASES; 0 RECIPIENTS; \$0.
 FS REINSTATED: 0 CASES; \$0.
 FS ZERO PAY: 0 CASES; 0 RECIPIENTS.

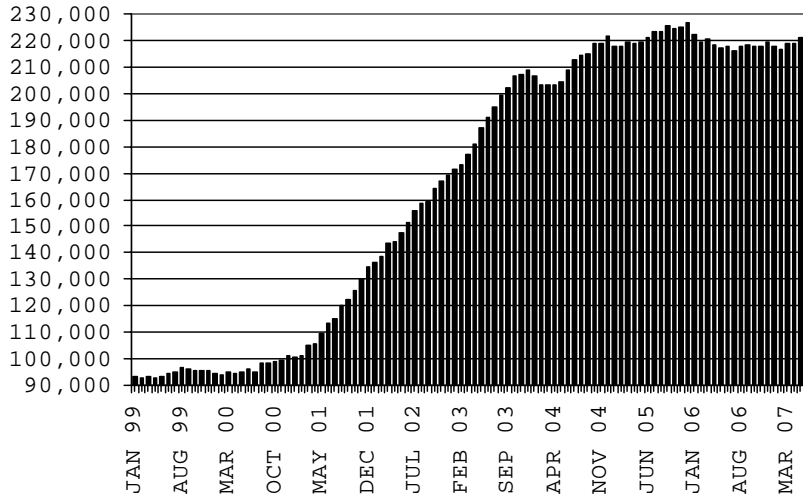
CHART 6

FOOD STAMPS PROGRAM

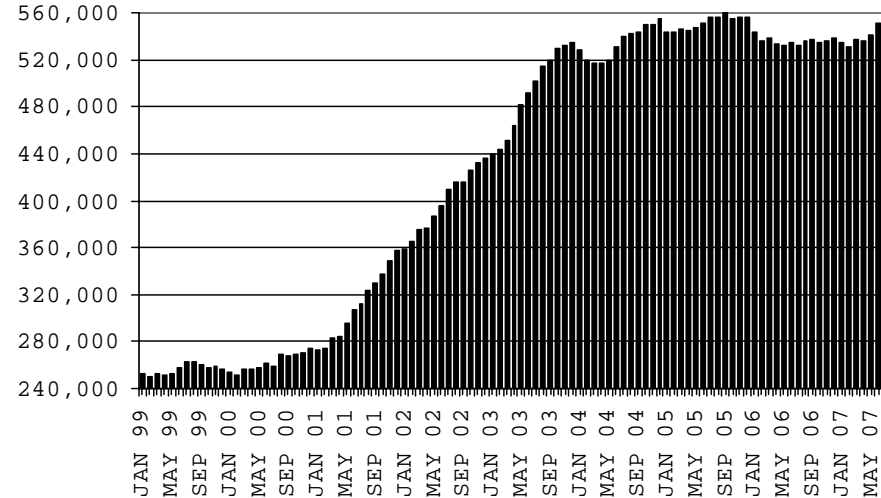
COMPARISON OF HOUSEHOLDS, RECIPIENTS, PAYMENTS & AVERAGE PAYMENTS

FOR 1999, 2000, 2001, 2002, 2003, 2004, 2005 & 2006

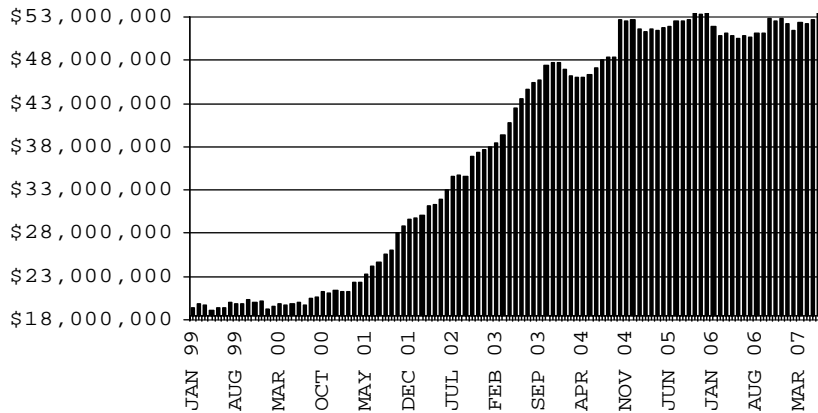
HOUSEHOLDS



RECIPIENTS



TOTAL PAYMENTS



AVERAGE PAYMENT PER HOUSEHOLD

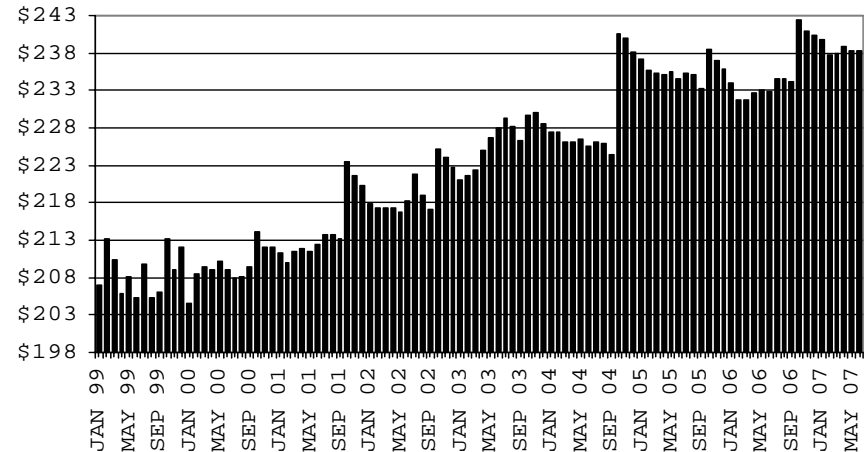


TABLE 7A
MEDICAL ASSISTANCE PROGRAM
RECIPIENTS

JUNE 2007

	SOBRA WOMAN 133% FPL	SOBRA CHILD	ADULT W/O CHILD 100% FPL	FOSTER CARE	1931 36% FPL	FEDERAL EMERGENCY SERVICES	INFANTS	ADULT W/O CHILD 40% FPL	MEDICAL W/SPEND DOWN	SOBRA WOMAN 100% FPL	SOBRA CHILD 100% FPL	TRANSITIONAL MEDICAL T1 - T4	1931 100% FPL	YATI	OTHER	TOTAL CASES
ARIZONA	11,329	60,543	36,113	9,080	247,004	84,394	49,494	80,541	5,069	3,439	153,885	42,583	73,298	220	20,425	877,417
DISTRICT I																
MARICOPA	5,776	33,070	15,247	4,554	126,744	64,775	29,850	34,584	2,810	1,736	84,343	20,882	33,495	112	10,070	468,048
DISTRICT II																
PIMA	1,747	9,302	7,117	2,540	38,709	10,514	6,823	14,550	626	531	24,388	7,182	13,175	67	3,603	140,874
DISTRICT III																
APACHE	256	1,472	935	39	10,370	103	945	4,070	60	81	3,839	1,204	2,318	0	319	26,011
COCONINO	403	1,370	1,133	117	6,908	536	1,146	2,758	97	90	3,477	1,307	2,032	9	330	21,713
NAVAJO	355	2,201	1,336	110	10,844	318	1,312	4,469	189	143	4,379	1,385	2,753	4	492	30,290
YAVAPAI	432	1,766	1,584	370	5,143	1,546	1,396	2,466	294	108	3,787	1,357	2,271	12	849	23,381
DISTRICT IV																
LA PAZ	44	245	195	18	1,160	196	167	541	19	20	636	166	342	0	133	3,882
MOHAVE	483	2,134	1,845	231	8,894	946	1,620	3,950	277	143	5,947	1,574	3,464	1	1,078	32,587
YUMA	558	2,517	2,246	258	10,250	2,208	1,887	3,030	213	201	8,014	2,397	4,887	1	1,100	39,767
DISTRICT V																
GILA	151	761	505	82	3,810	158	472	1,787	85	35	1,550	530	947	3	240	11,116
PINAL	596	3,505	1,661	410	13,206	1,799	2,181	4,596	214	189	6,505	2,175	3,376	6	1,028	41,447
DISTRICT VI																
COCHISE	264	1,103	1,242	247	6,030	685	832	2,147	109	81	3,493	1,126	2,102	4	679	20,144
GRAHAM	137	436	351	61	2,050	57	373	819	30	34	1,065	579	649	1	119	6,761
GREENLEE	30	38	46	11	322	7	56	111	7	2	134	56	75	0	22	917
SANTA CRUZ	97	623	670	32	2,564	546	434	663	39	45	2,328	663	1,412	0	363	10,479

TABLE 7B

MEDICAL ASSISTANCE PROGRAM

RECIPIENTS

CHANGE FROM

MAY 2007

	SOBRA WOMAN 133% FPL	SOBRA CHILD	ADULT W/O CHILD 100% FPL	FOSTER CARE	1931 36% FPL	FEDERAL EMERGENCY SERVICES	INFANTS	ADULT W/O CHILD 40% FPL	MEDICAL W/SPEND DOWN	SOBRA WOMAN 100% FPL	SOBRA CHILD 100% FPL	TRANSITIONAL MEDICAL T1 - T4	1931 100% FPL	YATI	OTHER	TOTAL CASES
ARIZONA	8	2,021	252	157	119	(45)	256	925	(142)	51	907	(1,765)	494	(7)	154	3,385
DISTRICT I																
MARICOPA	(49)	954	56	74	(35)	36	195	456	(130)	53	546	(617)	237	(6)	127	1,897
DISTRICT II																
PIMA	44	320	64	49	108	18	(29)	199	19	(19)	(1)	(122)	(64)	0	(18)	568
DISTRICT III	(15)	257	(36)	(1)	(58)	(68)	0	76	(3)	5	(45)	30	(71)	3	(23)	51
APACHE	(3)	137	3	(1)	123	(2)	(6)	68	4	(3)	(27)	(18)	(27)	0	(16)	232
COCONINO	(2)	30	6	0	(119)	0	9	(10)	(6)	(1)	(29)	(11)	(40)	1	(1)	(173)
NAVAJO	(1)	100	(1)	4	17	(12)	2	32	(9)	12	42	10	7	1	(7)	197
YAVAPAI	(9)	(10)	(44)	(4)	(79)	(54)	(5)	(14)	8	(3)	(31)	49	(11)	1	1	(205)
DISTRICT IV	15	264	156	10	100	2	59	71	(50)	21	400	(897)	344	(2)	38	531
LA PAZ	(1)	23	(8)	0	(4)	10	(3)	8	(10)	3	(7)	(18)	6	0	0	(1)
MOHAVE	13	53	41	7	58	2	38	45	(29)	(6)	(3)	36	16	0	18	289
YUMA	3	188	123	3	46	(10)	24	18	(11)	24	410	(915)	322	(2)	20	243
DISTRICT V	(7)	108	35	14	131	(19)	28	79	31	(3)	14	(98)	20	(1)	11	343
GILA	11	(12)	(5)	1	78	8	9	(3)	14	(7)	(39)	(26)	7	0	(4)	32
PINAL	(18)	120	40	13	53	(27)	19	82	17	4	53	(72)	13	(1)	15	311
DISTRICT VI	20	118	(23)	11	(127)	(14)	3	44	(9)	(6)	(7)	(61)	28	(1)	19	(5)
COCHISE	14	28	(11)	8	(57)	(16)	(17)	(13)	6	1	12	(84)	3	0	15	(111)
GRAHAM	3	31	(21)	2	(34)	2	11	34	2	(5)	(10)	14	10	(1)	2	40
GREENLEE	4	0	4	0	11	1	2	6	0	(2)	(7)	4	(9)	0	(3)	11
SANTA CRUZ	(1)	59	5	1	(47)	(1)	7	17	(17)	0	(2)	5	24	0	5	55

TABLE 7C
MEDICAL ASSISTANCE PROGRAM
RECIPIENTS

CHANGE FROM

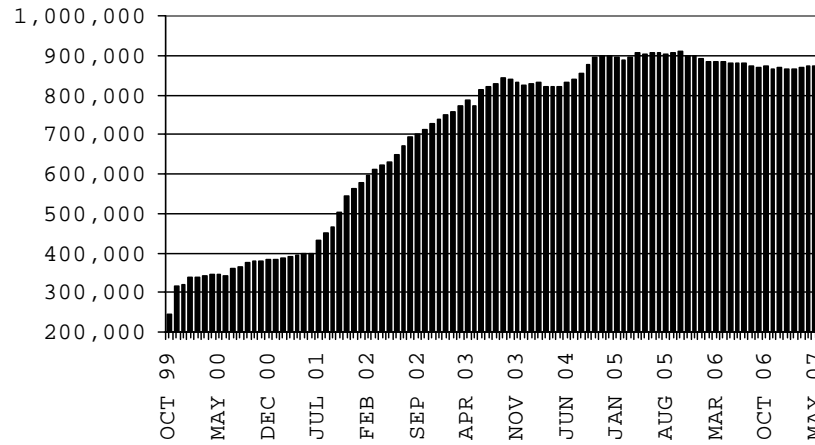
JUNE 2006

	SOBRA WOMAN 133% FPL	SOBRA CHILD	ADULT W/O CHILD 100% FPL	FOSTER CARE	1931 36% FPL	FEDERAL EMERGENCY SERVICES	INFANTS	ADULT W/O CHILD 40% FPL	MEDICAL W/SPEND DOWN	SOBRA WOMAN 100% FPL	SOBRA CHILD 100% FPL	TRANSITIONAL MEDICAL T1 - T4	3E 1931 100% FPL	YATI	OTHER	TOTAL CASES
ARIZONA	255	2,260	(1,168)	469	(7,240)	1,187	456	(3,497)	(570)	234	5,510	(1,248)	210	46	1,598	(1,498)
DISTRICT I																
MARICOPA	17	1,482	(629)	213	(3,852)	1,846	(348)	(3,080)	(411)	173	3,578	(395)	77	16	774	(539)
DISTRICT II																
PIMA	46	152	(69)	129	(910)	179	253	(418)	(110)	(26)	845	(314)	47	13	182	(1)
DISTRICT III																
APACHE	10	24	43	(3)	(668)	(18)	(28)	43	6	(14)	80	197	22	(1)	24	(283)
COCONINO	45	53	(63)	13	(253)	(84)	(9)	(102)	(32)	(6)	(309)	(66)	(149)	4	31	(927)
NAVAJO	14	54	3	(23)	(353)	18	52	261	(10)	48	131	(9)	48	4	62	300
YAVAPAI	(48)	(1)	(114)	9	(2)	(2)	47	(64)	54	3	3	(410)	(20)	6	64	(475)
DISTRICT IV																
LA PAZ	11	8	(37)	(1)	(58)	(4)	(11)	(8)	(2)	4	62	(3)	19	0	17	(3)
MOHAVE	(26)	94	26	8	(29)	(76)	152	(237)	(67)	(15)	306	(288)	46	(1)	74	(33)
YUMA	23	15	17	48	(872)	(474)	4	(105)	50	4	235	343	106	(3)	154	(455)
DISTRICT V																
GILA	102	463	(60)	80	250	(3)	288	392	(44)	61	687	134	22	5	88	2,465
PINAL	31	(63)	(32)	10	(234)	(17)	16	10	(15)	(2)	92	(19)	(16)	1	(16)	(254)
	71	526	(28)	70	484	14	272	382	(29)	63	595	153	38	4	104	2,719
DISTRICT VI																
COCHISE	61	(84)	(285)	(4)	(493)	(195)	56	(179)	(4)	2	(108)	(437)	(8)	3	128	(1,547)
GRAHAM	26	(68)	(146)	(2)	(351)	(124)	(15)	(90)	(6)	0	(7)	(111)	(54)	2	80	(866)
GREENLEE	28	(15)	(61)	(5)	(215)	(30)	51	(85)	(5)	1	(12)	(84)	(37)	1	(1)	(469)
SANTA CRUZ	13	(20)	(2)	1	(76)	0	9	(43)	4	0	(30)	(32)	0	0	(1)	(177)
	(6)	19	(76)	2	149	(41)	11	39	3	1	(59)	(210)	83	0	50	(35)

CHART 7

MEDICAL ASSISTANCE PROGRAM COMPARISON OF RECIPIENTS FOR 1999, 2000, 2001, 2002, 2003, 2004, 2005 & 2006

TOTAL RECIPIENTS



NEW SERIES WHICH INCLUDES 1931