

**Department of Economic Security**

**State of Arizona**

**Monthly Statistical Bulletin**

**OSPB M&I**

**Phoenix, AZ**

**September, 2007**

<http://www.azdes.gov/faa/Statistics.asp>

\*\*\*\* STATISTICAL BULLETIN \*\*\*\*  
ARIZONA DEPARTMENT OF ECONOMIC SECURITY  
FAMILY ASSISTANCE ADMINISTRATION  
BOX 6123, PHOENIX, ARIZONA 85005  
PHONE (602) 542-3678

SEPTEMBER 2007

THIS ISSUE OF THE STATISTICAL BULLETIN COMPARES SEPTEMBER 2007 DATA FOR EACH OF THE INDICATED PROGRAMS WITH THE INFORMATION FOR AUGUST 2007 AND SEPTEMBER 2006. STATEWIDE SUMMARIES OF ACTIVITY WITHIN EACH OF THE SPECIFIC PROGRAMS FOR THIS REPORT PERIOD ARE DISCUSSED BELOW. THE TABLES COMPARE CURRENT AND PRIOR MONTH DATA. DISTRICT AND COUNTY COMPARISONS ARE PROVIDED WITHIN THIS BULLETIN

CASH ASSISTANCE (CA)

COMPARING TO AUGUST 2007, SEPTEMBER 2007 CASES INCREASED BY 666 (1.87%) TO 36,341. RECIPIENTS INCREASED BY 1,533 (2.00%) TO 78,203. PAYMENTS INCREASED BY \$197,316 (2.07%) TO \$9,733,543. AVERAGE PAYMENT PER CASE INCREASED BY \$0.53 (0.20%) TO \$267.84. PAYMENT PER RECIPIENT INCREASED BY \$0.09 (0.07%) TO \$124.47.

COMPARING TO SEPTEMBER 2006, SEPTEMBER 2007 CASES DECREASED BY 1,586 (4.18%). RECIPIENTS DECREASED BY 4,858 (5.85%). TOTAL PAYMENTS DECREASED BY \$509,119 (4.97%). THE AVERAGE PAYMENT PER CASE DECREASED BY \$2.22 (0.82%). THE AVERAGE PAYMENT PER RECIPIENT INCREASED BY \$1.16 (1.01%).

CASH ASSISTANCE UNEMPLOYED PARENT PROGRAM (CA-UP)

COMPARING TO AUGUST 2007, SEPTEMBER 2007 CASES INCREASED BY 72 (11.69%) TO 688. RECIPIENTS INCREASED BY 262 (10.91%) TO 2,663. PAYMENTS INCREASED BY \$24,179 (10.68%) TO \$250,490. AVERAGE PAYMENT PER CASE DECREASED BY \$3.31 (0.90%) TO \$364.08. PAYMENT PER RECIPIENT DECREASED BY \$0.20 (0.21%) TO \$94.06.

COMPARING TO SEPTEMBER 2006, SEPTEMBER 2007 CASES INCREASED BY 163 (31.05%). RECIPIENTS INCREASED BY 650 (32.29%). TOTAL PAYMENTS INCREASED BY \$57,081 (29.51%). THE AVERAGE PAYMENT PER CASE DECREASED BY \$4.32 (1.17%). THE AVERAGE PAYMENT PER RECIPIENT DECREASED BY \$2.02 (2.10%).

CASH ASSISTANCE WITH GRANT UNDER \$100 (CA-MOE)

COMPARING TO AUGUST 2007, SEPTEMBER 2007 CASES DECREASED BY 17 (2.56%) TO 646. RECIPIENTS DECREASED BY 42 (3.03%) TO 1,342. PAYMENTS DECREASED BY \$685 (1.40%) TO \$48,274. AVERAGE PAYMENT PER CASE INCREASED BY \$0.89 (1.21%) TO \$74.73. AVERAGE PAYMENT PER RECIPIENT INCREASED BY \$0.59 (1.67%) TO \$35.97.

COMPARING TO SEPTEMBER 2006, SEPTEMBER 2007 CASES DECREASED BY 139 (17.71%). RECIPIENTS DECREASED BY 304 (18.47%). TOTAL PAYMENTS DECREASED BY \$10,818 (18.31%). THE AVERAGE PAYMENT PER CASE DECREASED BY \$0.55 (0.73%). THE AVERAGE PAYMENT PER RECIPIENT INCREASED BY \$0.07 (0.19%).

CASH ASSISTANCE UNEMPLOYED PARENT PROGRAM WITH GRANT UNDER \$100 (CA-UP-MOE) NEW PROGRAM STARTING 7/01

COMPARING TO AUGUST 2007, SEPTEMBER 2007 CASES DECREASED BY 7 (41.18%) TO 10. RECIPIENTS DECREASED BY 20 (40.82%) TO 29. PAYMENTS DECREASED BY \$348 (37.34%) TO \$584. AVERAGE PAYMENT PER CASE INCREASED BY \$3.58 (6.53%) TO \$58.40. PAYMENT PER RECIPIENT INCREASED BY \$1.12 (5.89%) TO \$20.14.

COMPARING TO SEPTEMBER 2006, SEPTEMBER 2007 CASES DECREASED BY 1 (9.09%). RECIPIENTS DECREASED BY 3 (0.32%). TOTAL PAYMENTS INCREASED BY \$130 (28.63%). THE AVERAGE PAYMENT PER CASE INCREASED BY \$17.13 (41.51%). THE AVERAGE PAYMENT PER RECIPIENT INCREASED BY \$5.95 (41.93%).

GENERAL ASSISTANCE (GA)

COMPARING TO AUGUST 2007, SEPTEMBER 2007 CASES INCREASED BY 10 (0.76%) TO 1,320. RECIPIENTS INCREASED BY 12 (0.91%) TO 1,327. PAYMENTS INCREASED BY \$2,457 (1.22%) TO \$203,244. AVERAGE PAYMENT PER CASE INCREASED BY \$0.70 (0.46%) TO \$153.97. AVERAGE PAYMENT PER RECIPIENT INCREASED BY \$0.47 (0.31%) TO \$153.16.

COMPARING TO SEPTEMBER 2006, SEPTEMBER 2007 CASES INCREASED BY 8 (0.61%). RECIPIENTS INCREASED BY 9 (0.68%). TOTAL PAYMENTS INCREASED BY \$3,507 (1.76%). THE AVERAGE PAYMENT PER CASE INCREASED BY \$1.73 (1.14%). THE AVERAGE PAYMENT PER RECIPIENT INCREASED BY \$1.61 (1.07%).

TUBERCULOSIS CONTROL PROGRAM (TC)

COMPARING TO AUGUST 2007, SEPTEMBER 2007 CASES DECREASED BY 1 (8.33%) TO 11. RECIPIENTS DECREASED BY 1 (8.33%) TO 11. PAYMENTS DECREASED BY \$127 (9.61%) TO \$1,195. AVERAGE PAYMENT PER CASE DECREASED BY \$1.53 (1.39%) TO \$108.64. AVERAGE PAYMENT PER RECIPIENT DECREASED BY \$1.53 (1.39%) TO \$108.64.

COMPARING TO SEPTEMBER 2006, SEPTEMBER 2007 CASES DECREASED BY 13 (54.17%). RECIPIENTS DECREASED BY 13 (54.17%). TOTAL PAYMENTS DECREASED BY \$1,411 (54.14%). THE AVERAGE PAYMENT PER CASE INCREASED BY \$0.06 (0.05%). THE AVERAGE PAYMENT PER RECIPIENT INCREASED BY \$0.06 (0.05%).

SUPPLEMENTAL PAYMENTS PROGRAM (SPP)

AS A RESULT OF ARIZONA'S OMNIBUS BUDGET RECONCILIATION BILL, HB 2535, THE SUPPLEMENTAL PAYMENT PROGRAM (SPP) IS BEING SUSPENDED EFFECTIVE JULY, 2003 THROUGH JUNE, 2004.

FOOD STAMP PROGRAM (FS)

COMPARING TO AUGUST 2007, SEPTEMBER 2007 FOOD STAMP HOUSEHOLDS INCREASED BY 3,696 (1.60%) TO 235,034. PERSONS RECEIVING FOOD STAMPS INCREASED BY 9,397 (1.66%) TO 575,269. TOTAL COUPON ISSUANCE INCREASED BY \$928,433 (1.68%) TO \$56,044,123. THE AVERAGE HOUSEHOLD ALLOTMENT INCREASED BY \$0.20 (0.09%) TO \$238.45. THE AVERAGE ALLOTMENT PER PERSON INCREASED BY \$0.02 (0.02%) TO \$97.42.

COMPARING TO SEPTEMBER 2006, SEPTEMBER 2007 FOOD STAMP HOUSEHOLDS INCREASED BY 16,541 (7.57%). PERSONS RECEIVING FOOD STAMPS INCREASED BY 38,270 (7.13%). TOTAL COUPON ISSUANCE INCREASED BY \$4,876,030 (9.53%). THE AVERAGE ALLOTMENT PER HOUSEHOLD INCREASED BY \$4.26 (1.82%). THE AVERAGE ALLOTMENT PER PERSON INCREASED BY \$2.13 (2.24%).

MEDICAL ASSISTANCE PROGRAM (MA) NEW TABLE INCLUDES PROP. 204 CATEGORIES

COMPARING TO AUGUST 2007, SEPTEMBER 2007 TOTAL RECIPIENTS TOTAL RECIPIENTS INCREASED BY 13,575 (1.51%). SOBRA WOMEN AT 140% FPL INCREASED BY 43 (0.37%). SOBRA CHILDREN INCREASED BY 503 (0.82%). ADULTS W/O CHILD AT 100% INCREASED BY 695 (1.89%). FOSTER CARE INCREASED BY 106 (1.14%). 1931 AT 36% FPL INCREASED BY 4,502 (1.77%). EMERGENCY SERVICES INCREASED BY 811 (0.94%). INFANTS INCREASED BY 385 (0.76%). ADULT W/O CHILD AT 140% INCREASED BY 2,209 (2.63%). MEDICAL W/SPEND DOWN INCREASED BY 280 (5.41%). SOBRA WOMAN AT 100% INCREASED BY 37 (1.06%). SOBRA CHILD AT 100% INCREASED BY 2,615 (1.67%). TRANSITIONAL MEDICAL DECREASED BY 203 (0.48%). 1931 AT 100% INCREASED BY 1,210 (1.62%). YATI INCREASED BY 8 (3.54%). ALL OTHER CATEGORIES INCREASED BY 374 (1.75%).

COMPARING TO SEPTEMBER 2006, SEPTEMBER 2007 TOTAL RECIPIENTS TOTAL RECIPIENTS INCREASED BY 40,824 (4.69%). SOBRA WOMEN AT 140% FPL INCREASED BY 546 (4.87%). SOBRA CHILDREN INCREASED BY 3,891 (6.69%). ADULTS W/O CHILD AT 100% INCREASED BY 1,299 (3.60%). FOSTER CARE INCREASED BY 594 (6.76%). 1931 AT 36% FPL INCREASED BY 5,781 (2.29%). EMERGENCY SERVICES INCREASED BY 4,022 (4.87%). INFANTS INCREASED BY 1,410 (2.84%). ADULT W/O CHILD AT 140% INCREASED BY 6,157 (7.71%). MEDICAL W/SPEND DOWN DECREASED BY 41 (0.75%). SOBRA WOMAN AT 100% INCREASED BY 303 (9.40%). SOBRA CHILD AT 100% INCREASED BY 11,855 (8.05%). TRANSITIONAL MEDICAL DECREASED BY 2,108 (4.75%). 1931 AT 100% INCREASED BY 4,486 (6.29%). YATI INCREASED BY 52 (28.57%). ALL OTHER CATEGORIES INCREASED BY 2,577 (13.43%).

## TANF SUMMARY

### TABLES 1, 1A, 1B, & 1C: ARIZONA 1)

	SEPTEMBER 2007							CHANGE FROM					
								AUGUST 2007			SEPTEMBER 2006		
	FAMILIES (CASES)	PERSONS (RECIP.)	ADULTS	CHILDREN	TOTAL PAYMENTS	AVERAGE PAYMENT/ CASE	AVERAGE PAYMENT/ RECIP.	FAMILIES (CASES)	PERSONS (RECIP.)	TOTAL PAYMENTS	FAMILIES (CASES)	PERSONS (RECIP.)	TOTAL PAYMENTS
ARIZONA	37,685	82,237	20,346	61,891	10,032,891	266.23	122.00	714	1,733	220,462	(1,563)	(4,515)	(462,726)
DISTRICT I													
MARICOPA	20,288	44,724	10,242	34,482	5,439,577	268.12	121.63	356	896	110,520	(869)	(2,249)	(252,530)
DISTRICT II													
PIMA	7,384	15,638	4,129	11,509	1,949,631	264.03	124.67	154	385	47,439	(428)	(1,255)	(128,889)
DISTRICT III													
APACHE	165	366	113	253	41,050	248.79	112.16	12	18	1,224	30	84	8,057
COCONINO	275	584	135	449	67,797	246.53	116.09	2	(2)	848	15	39	2,203
NAVAJO	1,402	3,413	976	2,437	388,425	277.05	113.81	(3)	(24)	(653)	(98)	(360)	(32,210)
YAVAPAI	661	1,269	286	983	162,567	245.94	128.11	42	73	9,563	0	(11)	2,658
DISTRICT IV													
LA PAZ	251	541	174	367	64,933	258.70	120.02	8	14	2,369	(27)	(92)	(6,896)
MOHAVE	1,406	2,987	863	2,124	362,839	258.06	121.47	12	35	2,755	(11)	38	4,233
YUMA	1,352	3,001	723	2,278	359,151	265.64	119.68	62	149	18,519	(65)	(298)	(32,192)
DISTRICT V													
GILA	782	1,686	569	1,117	208,539	266.67	123.69	0	7	1,707	(49)	(208)	(19,016)
PINAL	2,026	4,614	1,224	3,390	548,239	270.60	118.82	31	76	11,219	138	355	43,158
DISTRICT VI													
COCHISE	974	1,938	499	1,439	252,611	259.35	130.35	25	61	9,630	(125)	(339)	(31,853)
GRAHAM	395	773	244	529	100,774	255.12	130.37	(13)	(32)	(3,147)	(55)	(158)	(15,988)
GREENLEE	56	122	36	86	15,433	275.59	126.50	5	17	1,907	2	7	1,992
SANTA CRUZ	268	581	133	448	71,325	266.14	122.76	21	60	6,562	(21)	(68)	(5,453)

1/EXCLUDES: PRIOR MONTH NET TOTALS OF 2,156 CASES; 5,152 RECIPIENTS; \$412,838.  
 1/GRANT DIVERSION TOTALS OF: 16 CASES;\$16,118.  
 ZERO PAY TOTALS OF 171 CASES; 455 RECIPIENTS.

	CURRENT MO. CASES	CURRENT MO. RECIP.	CURRENT MO. DOLLARS	PRIOR MO. CASES	PRIOR MO. RECIP	PRIOR MO. DOLLARS
PASQUAYAUQUI	285	851	\$90,706	17	46	3,505
WM APACHE	756	1,962	\$222,515	8	17	1,320
SALT RIVER	90	316	\$27,982	6	14	687
NAVAJO	0	0	\$0	0	0	0
HOPI	145	413	\$35,210	17	55	2,432
<b>TOTAL</b>	1,276	3,542	\$376,413	48	132	\$7,944

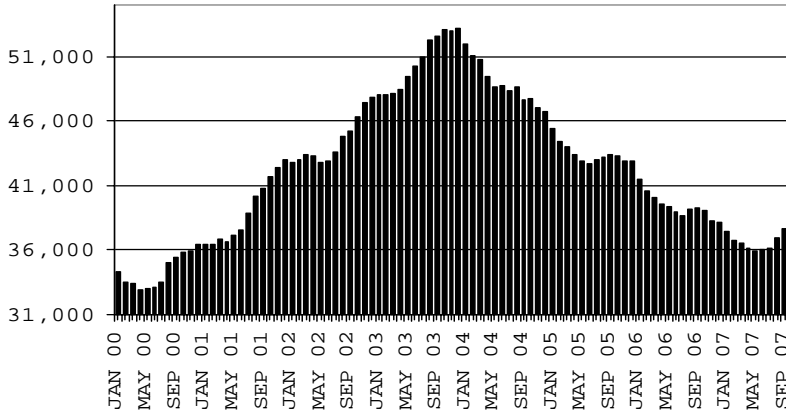
# TANF SUMMARY

## TABLES 1, 1A, 1B, & 1C

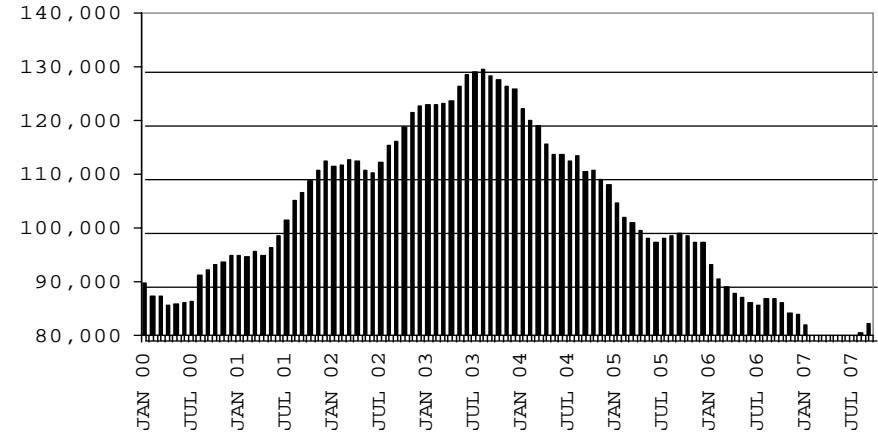
### COMPARISON OF CASES, RECIPIENTS, PAYMENTS & AVERAGE PAYMENTS

FOR 2000, 2001, 2002, 2003, 2004, 2005, 2006, & 2007

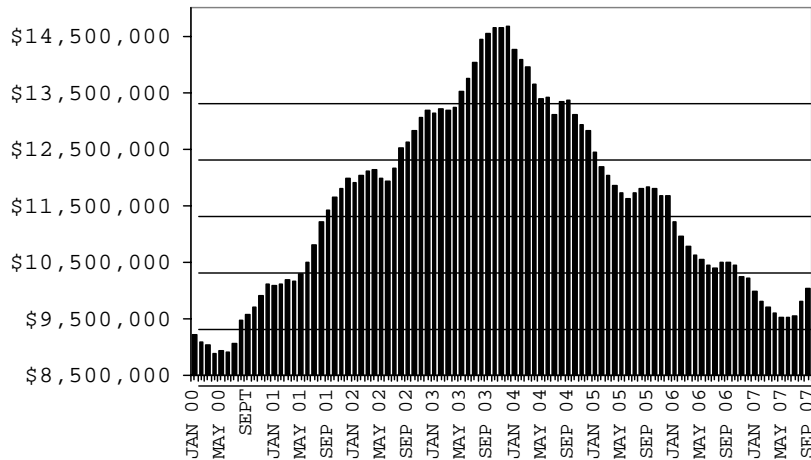
#### CASES



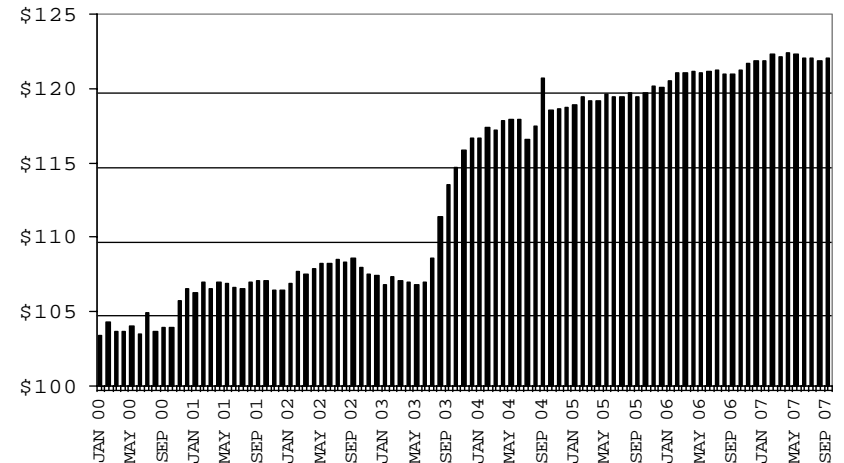
#### RECIPIENTS



#### PAYMENTS



#### AVERAGE PAYMENTS PER RECIPIENT



**TABLE 1**  
**CASH ASSISTANCE: ARIZONA 1**

	SEPTEMBER 2007							CHANGE FROM			AUGUST 2007			SEPTEMBER 2006		
	FAMILIES (CASES)	(RECIP.)	ADULTS	CHILDREN	TOTAL PAYMENTS	AVERAGE PAYMENT/ CASE	AVERAGE PAYMENT/ RECIP.	FAMILIES (CASES)	PERSONS (RECIP.)	TOTAL PAYMENTS	FAMILIES (CASES)	PERSONS (RECIP.)	TOTAL PAYMENTS	FAMILIES (CASES)	PERSONS (RECIP.)	TOTAL PAYMENTS
	ARIZONA	36,341	78,203	18,777	59,426	9,733,543	267.84	124.47	666	1,533	197,316	(1,586)	(4,858)	(509,119)		
DISTRICT I																
MARICOPA	19,690	43,001	9,657	33,344	5,322,437	270.31	123.77	348	834	104,810	(893)	(2,430)	(276,949)			
DISTRICT II																
PIMA	7,138	14,918	3,830	11,088	1,895,855	265.60	127.09	133	334	41,706	(380)	(1,158)	(125,286)			
DISTRICT III																
APACHE	152	338	102	236	39,270	258.36	116.18	12	23	1,769	30	86	7,575			
COCONINO	266	564	128	436	66,909	251.54	118.63	7	12	1,418	14	41	2,703			
NAVAJO	1,327	3,123	843	2,280	362,982	273.54	116.23	2	3	542	(101)	(369)	(31,149)			
YAVAPAI	640	1,213	267	946	159,397	249.06	131.41	40	68	9,445	0	(31)	1,239			
DISTRICT IV																
LA PAZ	236	499	155	344	61,380	260.08	123.01	9	18	2,476	(30)	(101)	(8,280)			
MOHAVE	1,320	2,724	741	1,983	342,783	259.68	125.84	(8)	(25)	(2,154)	(28)	(34)	(1,798)			
YUMA	1,268	2,740	622	2,118	338,257	266.76	123.45	50	85	13,141	(101)	(420)	(40,366)			
DISTRICT V																
GILA	734	1,529	490	1,039	194,275	264.68	127.06	7	8	1,648	(50)	(227)	(21,679)			
PINAL	1,931	4,278	1,086	3,192	521,369	270.00	121.87	38	98	12,076	127	290	36,576			
DISTRICT VI																
COCHISE	949	1,875	474	1,401	246,555	259.81	131.50	19	43	6,699	(109)	(312)	(32,733)			
GRAHAM	378	730	223	507	97,109	256.90	133.03	(12)	(31)	(3,459)	(50)	(144)	(16,071)			
GREENLEE	55	120	34	86	15,362	279.31	128.02	5	17	1,883	4	13	2,038			
SANTA CRUZ	257	551	125	426	69,603	270.83	126.32	16	46	5,316	(19)	(62)	(4,939)			

1/EXCLUDES: PRIOR MONTH NET TOTALS OF: 1,152 CASES; 2,852 RECIPIENTS; \$329,014.  
GRANT DIVERSION TOTALS OF: 16 CASES; \$16,118.  
ZERO PAY TOTALS OF 167 CASES; 431 RECIPIENTS.

CASES WITH GRANT UNDER \$100 (SEE TABLE 1B).

	CURRENT MO. CASES	CURRENT MO. RECIP.	CURRENT MO. DOLLARS	PRIOR MO. CASES	PRIOR MO. RECIP.	PRIOR MO. DOLLARS
PASQUAYQUI	276	802	86,449	16	41	3,427
WM APACHE	712	1,777	205,793	7	14	907
SALT RIVER	90	316	27,982	6	14	687
NAVAJO	0	0	0	0	0	0
HOPI	145	413	35,210	17	55	2,432
<b>TOTAL</b>	<b>1,223</b>	<b>3,308</b>	<b>355,434</b>	<b>46</b>	<b>124</b>	<b>7,453</b>

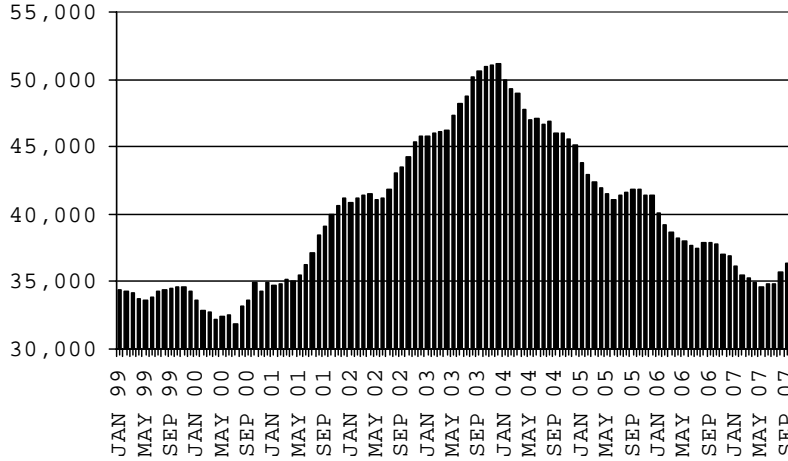
# CHART 1

## CASH ASSISTANCE PROGRAM

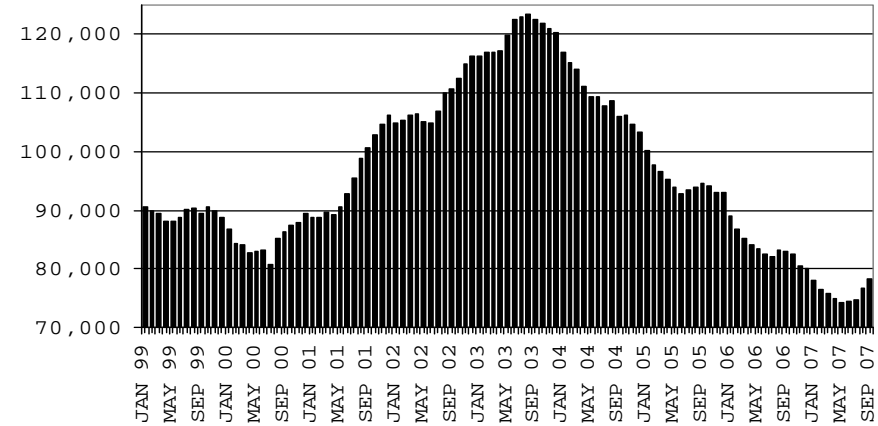
### COMPARISON OF CASES, RECIPIENTS, PAYMENTS & AVERAGE PAYMENTS

FOR 1999, 2000, 2001, 2002, 2003, 2004, 2005, 2006 & 2007

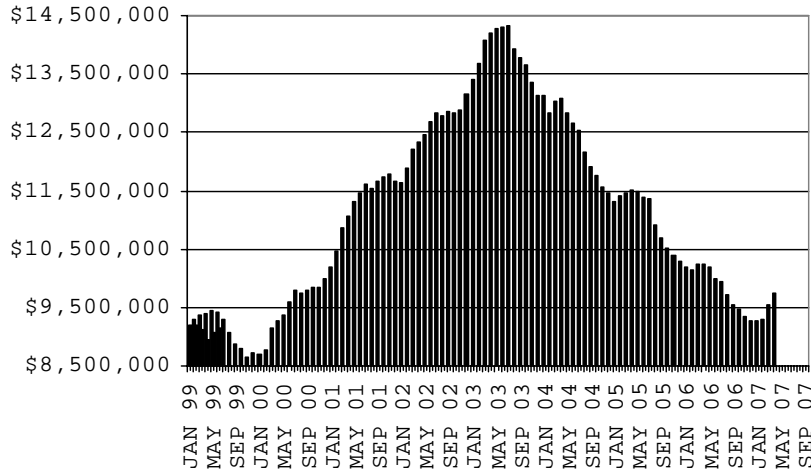
**CASES**



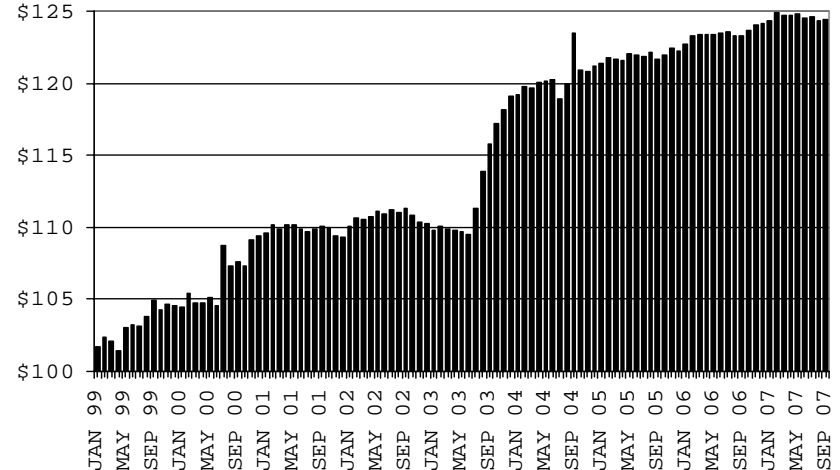
**RECIPIENTS**



**PAYMENTS**



**AVERAGE PAYMENTS PER RECIPIENT**



**TABLE 1A  
CA-UP**

**CASH ASSISTANCE UNEMPLOYED PARENT PROGRAM: ARIZONA 1**

	SEPTEMBER 2007							CHANGE FROM			AUGUST 2007			SEPTEMBER 2006		
	FAMILIES (CASES)	PERSONS (RECIP.)	ADULTS	CHILDREN	TOTAL PAYMENTS	AVERAGE PAYMENT/ CASE	AVERAGE PAYMENT/ RECIP.	FAMILIES (CASES)	PERSONS (RECIP.)	TOTAL PAYMENTS	FAMILIES (CASES)	PERSONS (RECIP.)	TOTAL PAYMENTS			
ARIZONA	688	2,663	1,189	1,474	250,490	364.08	94.06	72	262	24,179	163	650	57,081			
DISTRICT I																
MARICOPA	249	970	399	571	92,242	370.45	95.09	24	102	7,905	78	315	28,630			
DISTRICT II																
PIMA	125	477	223	254	43,828	350.62	91.88	17	42	4,728	3	10	(968)			
DISTRICT III																
APACHE	4	13	8	5	1,295	323.75	99.62	(1)	(6)	(532)	1	0	568			
COCONINO	1	4	2	2	418	418.00	104.50	(1)	(3)	(218)	(2)	(5)	(365)			
NAVAJO	66	267	125	142	24,676	373.88	92.42	(5)	(22)	(1,491)	5	3	(803)			
YAVAPAI	7	27	12	15	2,434	347.71	90.15	0	1	108	5	21	1,817			
DISTRICT IV																
LA PAZ	9	33	15	18	2,944	327.11	89.21	0	2	(292)	2	11	1,143			
MOHAVE	47	186	90	96	17,386	369.91	93.47	12	43	4,096	20	82	7,051			
YUMA	53	199	82	117	18,445	348.02	92.69	13	62	5,488	19	84	7,450			
DISTRICT V																
GILA	39	137	74	63	13,507	346.33	98.59	2	10	401	10	38	3,437			
PINAL	63	258	116	142	24,162	383.52	93.65	(1)	(10)	(462)	16	66	7,022			
DISTRICT VI																
COCHISE	12	45	20	25	4,803	400.25	106.73	8	27	3,011	4	19	1,999			
GRAHAM	9	31	17	14	3,213	357.00	103.65	1	2	434	2	7	707			
GREENLEE	0	0	0	0	0	0.00	0.00	0	0	0	0	0	0			
SANTA CRUZ	4	16	6	10	1,137	284.25	71.06	3	12	1,003	0	(1)	(607)			

1/EXCLUDES: PRIOR MONTH NET TOTALS OF: 81 CASES; 322 RECIPIENTS; \$27,100.  
GRANT DIVERSION TOTALS OF: 0 CASES; \$0.  
ZERO PAY TOTALS OF 4 CASES; 24 RECIPIENTS.

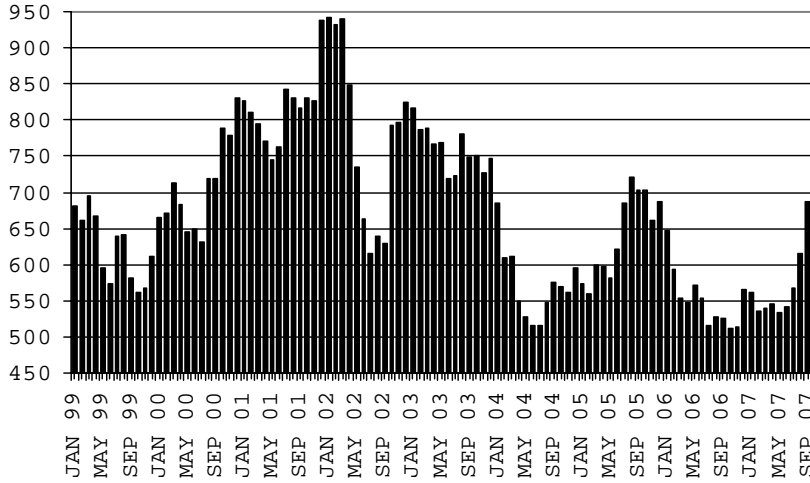
	CURRENT MO. CASES	CURRENT MO. RECIP.	CURRENT MO. DOLLARS	PRIOR MO. CASES	PRIOR MO. RECIP.	PRIOR MO. DOLLARS
PASQUA/YAQUI	9	49	4,257	1	5	78
WM APACHE	44	185	16,722	1	3	413
SALT RIVER	0	0	0	0	0	0
NAVAJO	0	0	0	0	0	0
HOPi	0	0	0	0	0	0
<b>TOTAL</b>	<b>53</b>	<b>234</b>	<b>20,979</b>	<b>2</b>	<b>8</b>	<b>491</b>

CASES WITH GRANT UNDER \$100 (SEE TABLE 1C).

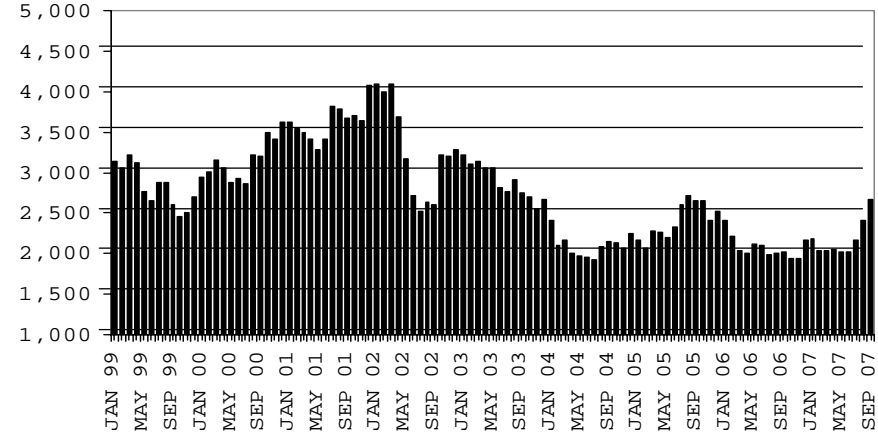
# CHART 1A

## CASH ASSISTANCE UNEMPLOYED PARENT PROGRAM COMPARISON OF CASES, RECIPIENTS, PAYMENTS & AVERAGE PAYMENTS FOR 1999, 2000, 2001, 2002, 2003, 2004, 2005, 2006 & 2007

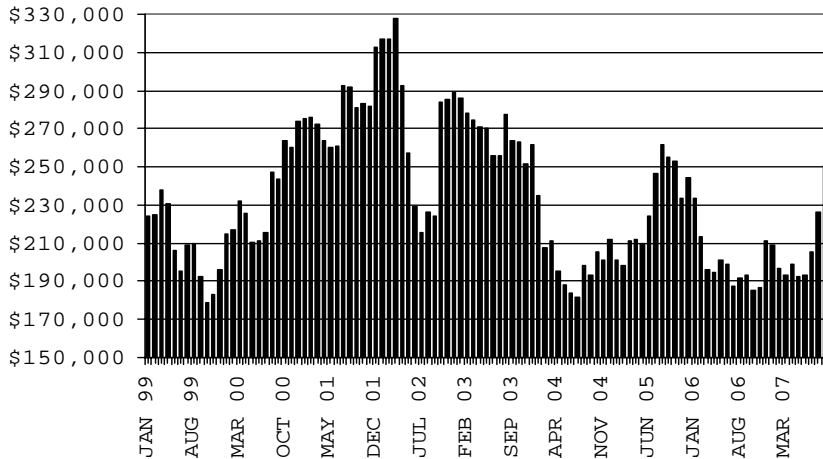
### CASES



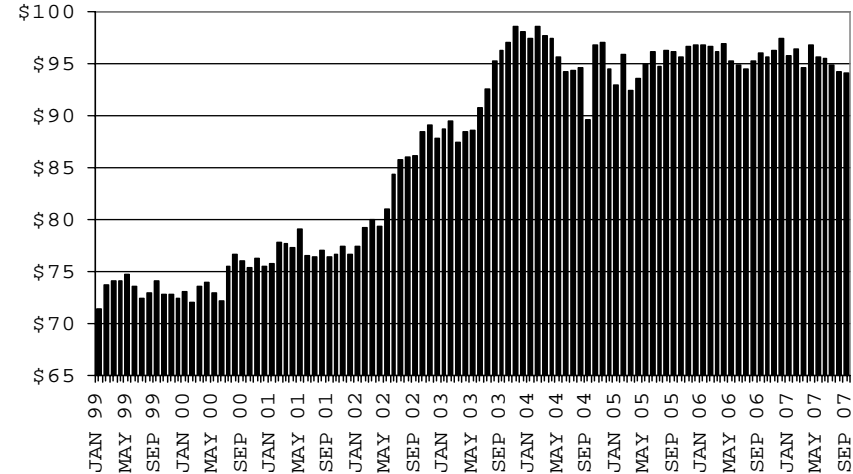
### RECIPIENTS



### PAYMENTS



### AVERAGE PAYMENTS PER RECIPIENT





**TABLE 1B 1/**

**CASH ASSISTANCE: ARIZONA  
CASES WITH GRANT UNDER \$100**

	SEPTEMBER 2007							CHANGE FROM			SEPTEMBER 2006		
	FAMILIES (CASES)	PERSONS (RECIP.)	ADULTS	CHILDREN	TOTAL PAYMENTS	AVERAGE	AVERAGE	FAMILIES (CASES)	PERSONS (RECIP.)	TOTAL PAYMENTS	FAMILIES (CASES)	PERSONS (RECIP.)	TOTAL PAYMENTS
						PAYMENT/ CASE	PAYMENT/ RECIP.						
ARIZONA	646	1,342	367	975	48,274	74.73	35.97	(17)	(42)	(685)	(139)	(304)	(10,818)
DISTRICT I													
MARICOPA	345	745	182	563	24,600	71.30	33.02	(15)	(34)	(2,100)	(54)	(132)	(4,405)
DISTRICT II													
PIMA	119	236	72	164	9,851	82.78	41.74	7	13	1,216	(50)	(101)	(2,586)
DISTRICT III													
APACHE	9	15	3	12	485	53.89	32.33	1	1	(13)	0	0	(38)
COCONINO	8	16	5	11	470	58.75	29.38	(4)	(11)	(352)	3	3	(135)
NAVAJO	9	23	8	15	767	85.22	33.35	0	(5)	296	(2)	6	(258)
YAVAPAI	14	29	7	22	736	52.57	25.38	2	4	10	(5)	(1)	(398)
DISTRICT IV													
LA PAZ	6	9	4	5	609	101.50	67.67	0	(2)	202	1	(2)	241
MOHAVE	38	74	30	44	2,610	68.68	35.27	10	23	881	(3)	(10)	(1,017)
YUMA	29	56	18	38	2,399	82.72	42.84	(1)	2	(98)	16	33	731
DISTRICT V													
GILA	9	20	5	15	757	84.11	37.85	(9)	(11)	(342)	(9)	(19)	(774)
PINAL	31	73	20	53	2,629	84.81	36.01	(6)	(12)	(450)	(6)	(6)	(519)
DISTRICT VI													
COCHISE	13	18	5	13	1,253	96.38	69.61	(2)	(9)	(80)	(20)	(46)	(1,119)
GRAHAM	8	12	4	8	452	56.50	37.67	(2)	(3)	(122)	(6)	(18)	(588)
GREENLEE	1	2	2	0	71	71.00	35.50	0	0	24	(2)	(6)	(46)
SANTA CRUZ	7	14	2	12	585	83.57	41.79	2	2	243	(2)	(5)	93

EXCLUDES: PRIOR MONTH NET TOTALS OF 884 CASES; 1,852 RECIPIENTS; \$54,818.

# CHART 1B

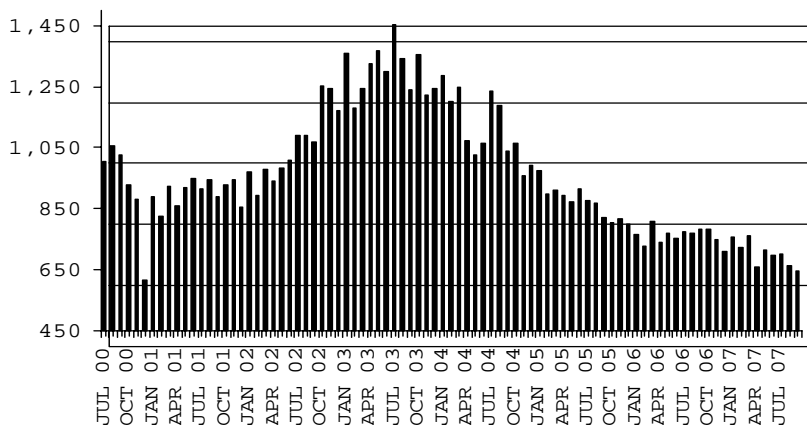
## CASH ASSISTANCE PROGRAM

### CASES WITH GRANT UNDER \$100

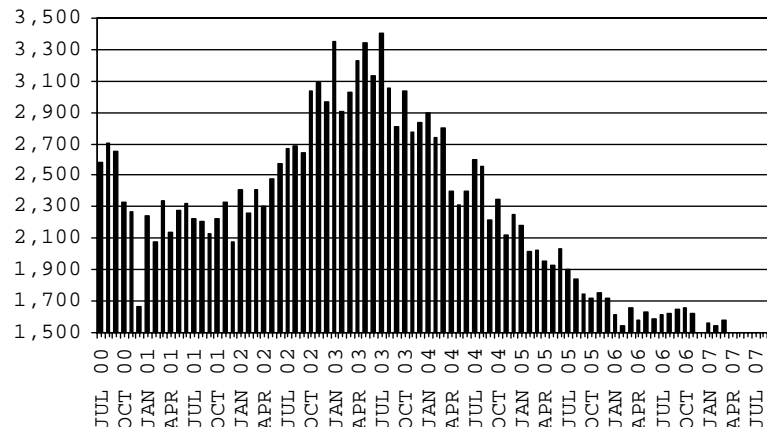
#### COMPARISON OF CASES, RECIPIENTS, PAYMENTS & AVERAGE PAYMENTS

FOR 2000, 2001, 2002, 2003, 2004, 2005, 2006 & 2007

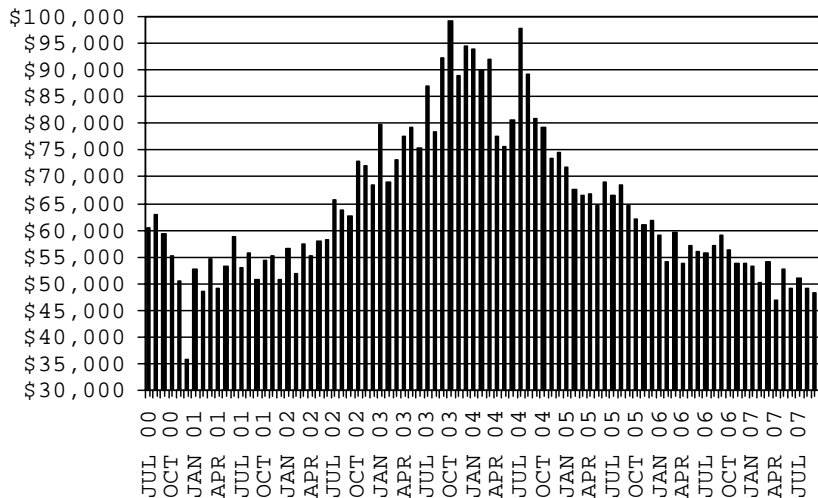
**CASES**



**RECIPIENTS**



**PAYMENTS**



**AVERAGE PAYMENTS PER RECIPIENT**

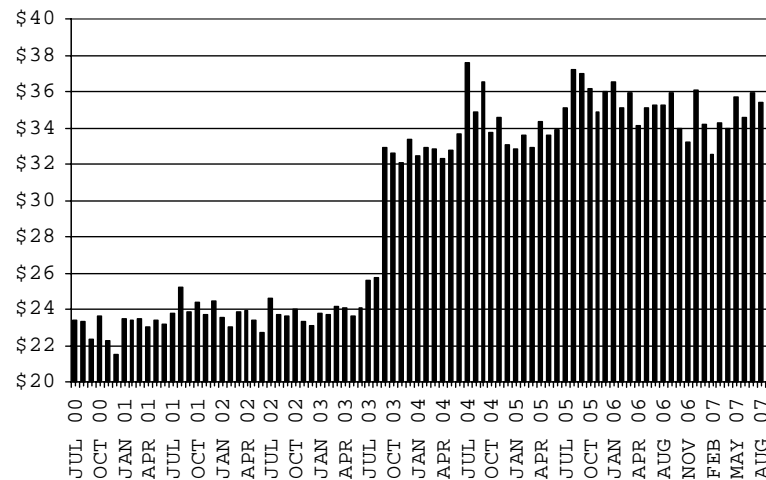


TABLE 1C 1/

CASH ASSISTANCE UNEMPLOYED PARENT PROGRAM: ARIZONA  
 CASES WITH GRANT UNDER \$100

	SEPTEMBER 2007							CHANGE FROM			AUGUST 2007			SEPTEMBER 2006		
	FAMILIES (CASES)	PERSONS (RECIP.)	ADULTS	CHILDREN	TOTAL PAYMENTS	AVERAGE PAYMENT/ CASE	AVERAGE PAYMENT/ RECIP.	FAMILIES (CASES)	PERSONS (RECIP.)	TOTAL PAYMENTS	FAMILIES (CASES)	PERSONS (RECIP.)	TOTAL PAYMENTS			
	ARIZONA	10	29	13	16	584	58.40	20.14	(7)	(20)	(348)	(1)	(3)	130		
DISTRICT I																
MARICOPA	4	8	4	4	298	74.50	37.25	(1)	(6)	(95)	0	(2)	194			
DISTRICT II																
PIMA	2	7	4	3	97	48.50	13.86	(3)	(4)	(211)	(1)	(6)	(49)			
DISTRICT III																
APACHE	0	0	0	0	0	0.00	0.00	0	0	0	(1)	(2)	(48)			
COCONINO	0	0	0	0	0	0.00	0.00	0	0	0	0	0	0			
NAVAJO	0	0	0	0	0	0.00	0.00	0	0	0	0	0	0			
YAVAPAI	0	0	0	0	0	0.00	0.00	0	0	0	0	0	0			
DISTRICT IV																
LA PAZ	0	0	0	0	0	0.00	0.00	(1)	(4)	(17)	0	0	0			
MOHAVE	1	3	2	1	60	60.00	20.00	(2)	(6)	(68)	0	0	(3)			
YUMA	2	6	1	5	50	25.00	8.33	0	0	(12)	1	5	(7)			
DISTRICT V																
GILA	0	0	0	0	0	0.00	0.00	0	0	0	0	0	0			
PINAL	1	5	2	3	79	79.00	15.80	0	0	55	1	5	79			
DISTRICT VI																
COCHISE	0	0	0	0	0	0.00	0.00	0	0	0	0	0	0			
GRAHAM	0	0	0	0	0	0.00	0.00	0	0	0	(1)	(3)	(36)			
GREENLEE	0	0	0	0	0	0.00	0.00	0	0	0	0	0	0			
SANTA CRUZ	0	0	0	0	0	0.00	0.00	0	0	0	0	0	0			

EXCLUDES: PRIOR MONTH NET TOTALS OF 39 CASES; 126 RECIPIENTS; \$1,906.

11/7/2007

# CHART 1C

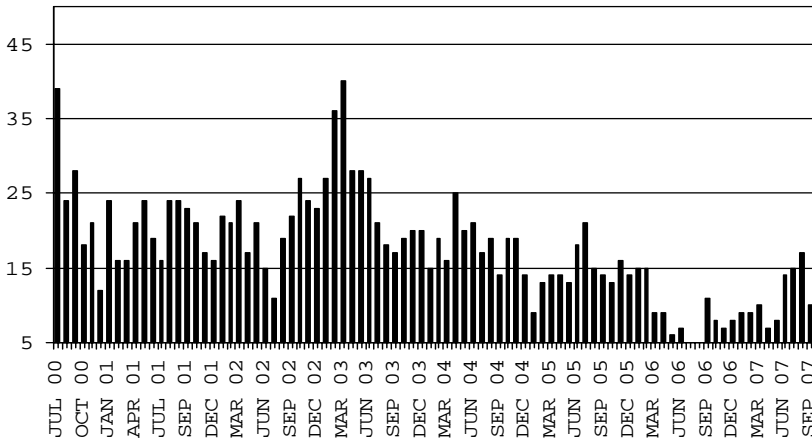
## CASH ASSISTANCE UNEMPLOYED PARENT PROGRAM

### CASES WITH GRANT UNDER \$100

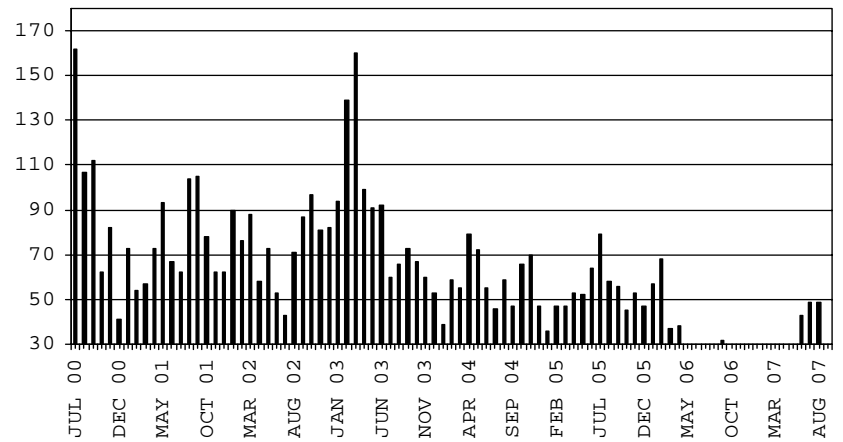
#### COMPARISON OF CASES, RECIPIENTS, PAYMENTS & AVERAGE PAYMENTS

FOR 2000, 2001, 2002, 2003, 2004, 2005, 2006 & 2007

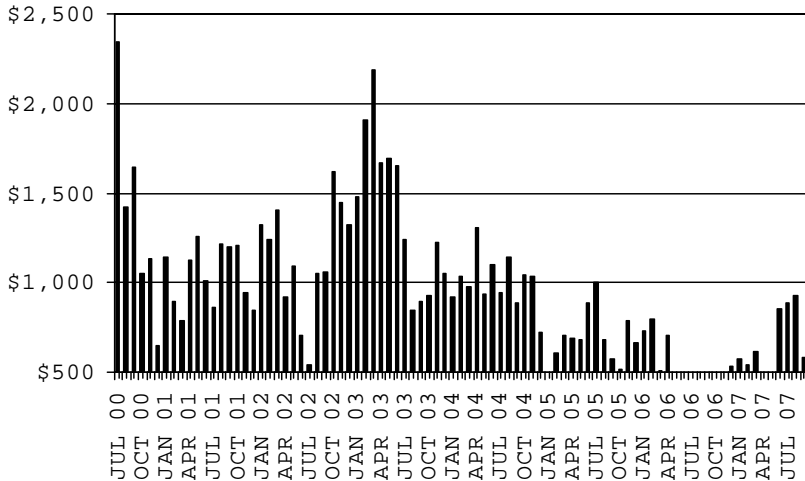
**CASES**



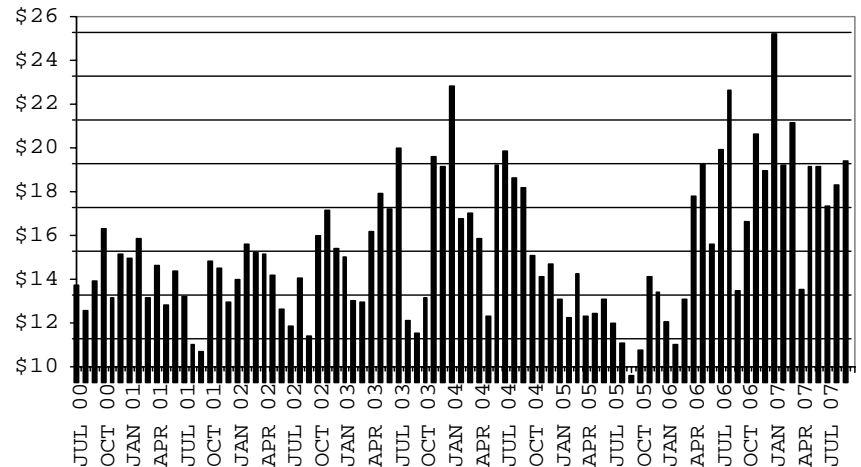
**RECIPIENTS**



**PAYMENTS**



**AVERAGE PAYMENTS PER RECIPIENT**



**TABLE 2**  
**GENERAL ASSISTANCE: ARIZONA 1)**

	SEPTEMBER 2007					AUGUST 2007			CHANGE FROM SEPTEMBER 2006		
	NUMBER OF CASES	PERSONS (RECIP.)	TOTAL PAYMENTS	AVERAGE PAYMENT/ CASE	AVERAGE PAYMENT/ RECIP.	NUMBER OF CASES	PERSONS (RECIP.)	TOTAL PAYMENTS	NUMBER OF CASES	PERSONS (RECIP.)	TOTAL PAYMENTS
	ARIZONA	1,320	1,327	203,244	153.97	153.16	10	12	2,457	8	9
DISTRICT I											
MARICOPA	572	572	88,434	154.60	154.60	5	5	760	34	31	7,196
DISTRICT II											
PIMA	334	335	50,085	149.96	149.51	(15)	(15)	(1,625)	8	8	(40)
DISTRICT III											
APACHE	10	11	1,530	153.00	139.09	2	2	281	(2)	(2)	(128)
COCONINO	23	24	3,451	150.04	143.79	2	2	400	7	7	1,143
NAVAJO	33	33	5,189	157.24	157.24	0	0	(144)	8	8	1,678
YAVAPAI	53	54	8,301	156.62	153.72	2	2	334	(9)	(8)	(1,215)
DISTRICT IV											
LA PAZ	11	12	1,638	148.91	136.50	2	3	276	6	7	903
MOHAVE	71	72	11,150	157.04	154.86	6	7	1,065	(15)	(14)	(1,793)
YUMA	27	27	3,603	133.44	133.44	2	2	238	(18)	(18)	(3,392)
DISTRICT V											
GILA	27	27	4,154	153.85	153.85	5	5	561	4	4	642
PINAL	103	104	16,541	160.59	159.05	0	0	261	10	11	2,300
DISTRICT VI											
COCHISE	46	46	7,503	163.11	163.11	1	1	301	(14)	(14)	(2,162)
GRAHAM	6	6	973	162.17	162.17	(2)	(2)	(346)	(7)	(7)	(1,146)
GREENLEE	1	1	173	173.00	173.00	0	0	0	0	0	0
SANTA CRUZ	3	3	519	173.00	173.00	0	0	95	(4)	(4)	(479)

1/EXCLUDES: PRIOR MONTH NET TOTALS OF : 195 CASES; 197 RECIPIENTS; \$44,503.  
REFUGEE RESETTLEMENT PROGRAM: 86 CASES; 156 RECIPIENTS; \$22,967.

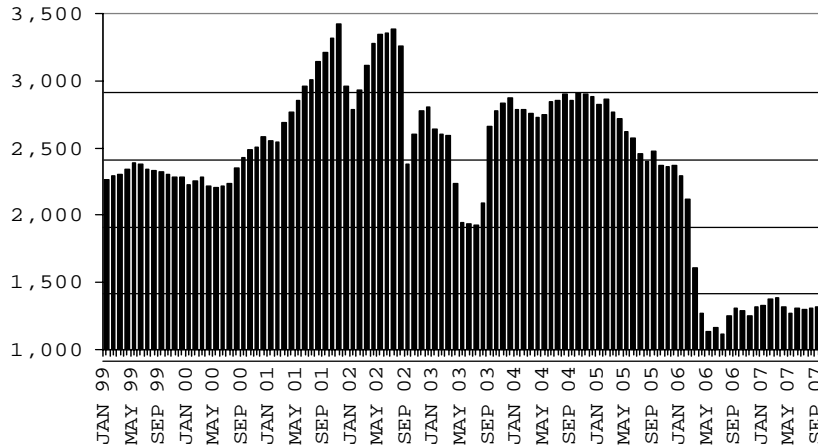
# CHART 2

## GENERAL ASSISTANCE PROGRAM

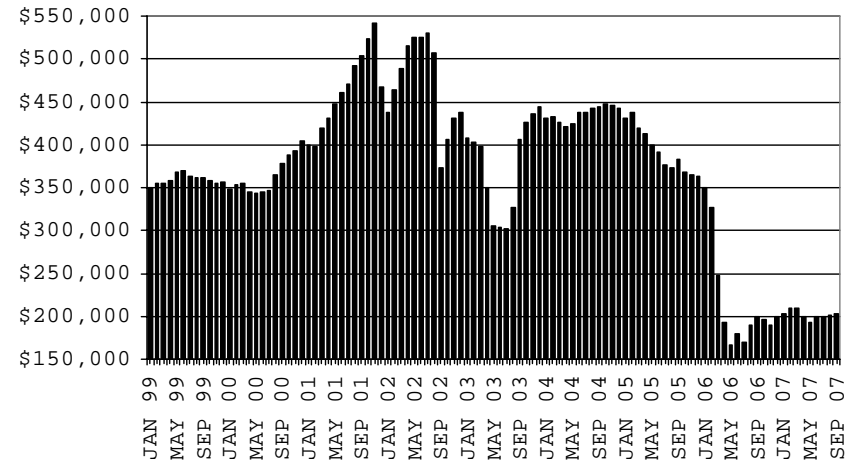
### COMPARISON OF CASES, PAYMENTS & AVERAGE PAYMENTS

FOR 1999, 2000, 2001, 2002, 2003, 2004, 2005, 2006 & 2007

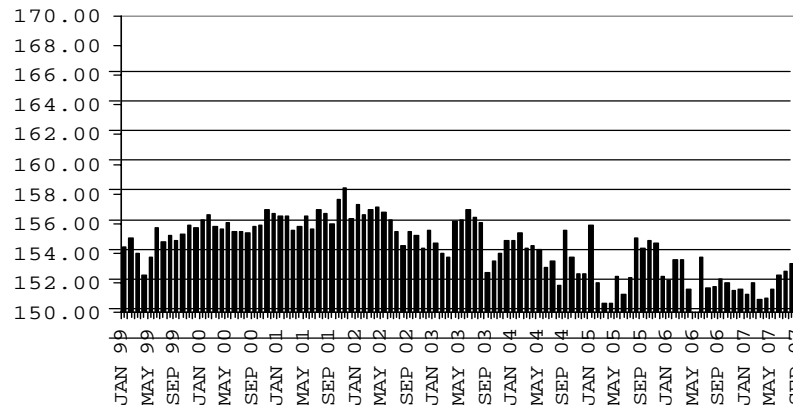
**CASES**



**PAYMENTS**



**AVERAGE PAYMENT PER CASE**



**TABLE 4**  
**TUBERCULOSIS CONTROL: ARIZONA 1/**

	SEPTEMBER 2007					CHANGE FROM					
						AUGUST 2007			SEPTEMBER 2006		
	NUMBER OF CASES	PERSONS (RECIP.)	TOTAL PAYMENTS	AVERAGE PAYMENT/ CASE	AVERAGE PAYMENT/ RECIP.	NUMBER OF CASES	PERSONS (RECIP.)	TOTAL PAYMENTS	NUMBER OF CASES	PERSONS (RECIP.)	TOTAL PAYMENTS
ARIZONA	11	11	1,195	108.64	108.64	(1)	(1)	(127)	(13)	(13)	(1,411)
DISTRICT I											
MARICOPA	11	11	1,195	108.64	108.64	(1)	(1)	(127)	(12)	(12)	(1,303)
DISTRICT II											
PIMA	0	0	0	0.00	0.00	0	0	0	(1)	(1)	(108)
DISTRICT III											
APACHE	0	0	0	0.00	0.00	0	0	0	0	0	0
COCONINO	0	0	0	0.00	0.00	0	0	0	0	0	0
NAVAJO	0	0	0	0.00	0.00	0	0	0	0	0	0
YAVAPAI	0	0	0	0.00	0.00	0	0	0	0	0	0
DISTRICT IV											
LA PAZ	0	0	0	0.00	0.00	0	0	0	0	0	0
MOHAVE	0	0	0	0.00	0.00	0	0	0	0	0	0
YUMA	0	0	0	0.00	0.00	0	0	0	0	0	0
DISTRICT V											
GILA	0	0	0	0.00	0.00	0	0	0	0	0	0
PINAL	0	0	0	0.00	0.00	0	0	0	0	0	0
DISTRICT VI											
COCHISE	0	0	0	0.00	0.00	0	0	0	0	0	0
GRAHAM	0	0	0	0.00	0.00	0	0	0	0	0	0
GREENLEE	0	0	0	0.00	0.00	0	0	0	0	0	0
SANTA CRUZ	0	0	0	0.00	0.00	0	0	0	0	0	0

1/EXCLUDES: PRIOR MONTH NET TOTALS OF : 0 CASES; 0 RECIPIENTS; \$0.

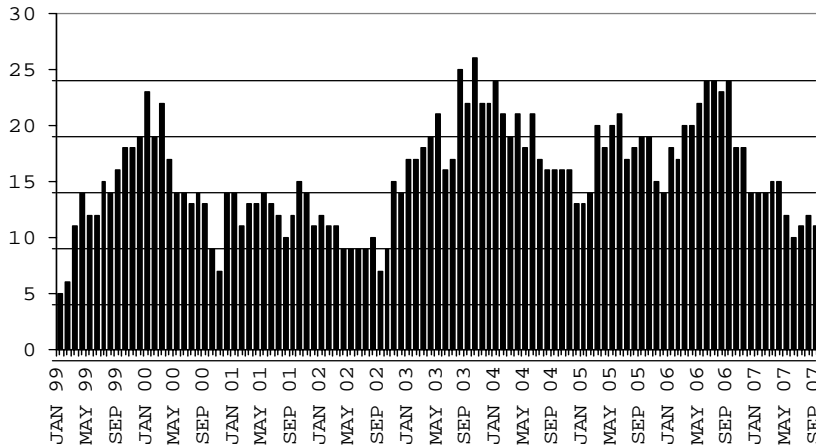
# CHART 4

## TUBERCULOSIS CONTROL PROGRAM

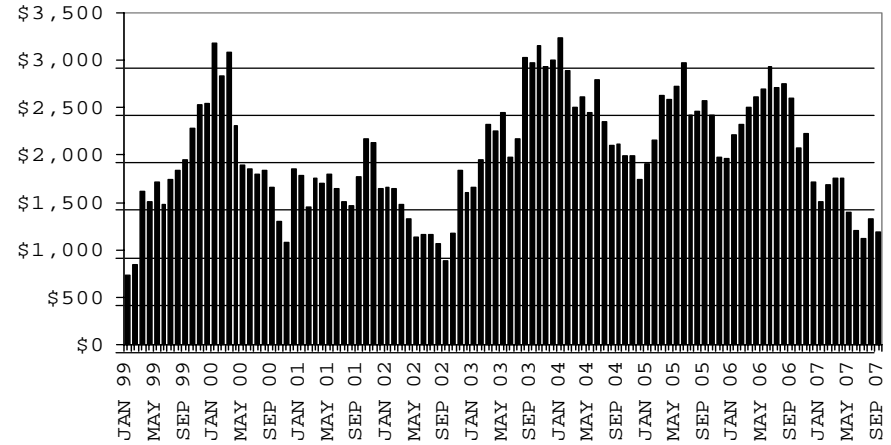
### COMPARISON OF CASES, PAYMENTS & AVERAGE PAYMENTS

FOR 1999, 2000, 2001, 2002, 2003, 2004, 2005, 2006 & 2007

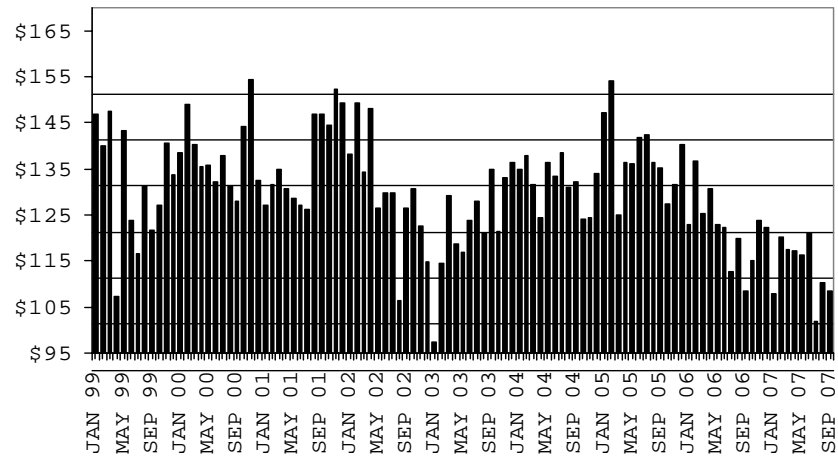
**CASES**



**PAYMENTS**



**AVERAGE PAYMENT PER CASE**





**TABLE 5**

**SUPPLEMENTAL PAYMENTS PROGRAM: ARIZONA 1,  
 BASED ON HB 2535 SPP IS SUSPENDED FROM JULY, 2003 THROUGH JUNE, 2004**

CHANGE FROM

	SEPTEMBER 2007			AUGUST 2007		SEPTEMBER 2006	
	NUMBER OF PAYMENTS	TOTAL PAYMENTS	AVERAGE PAYMENT	NUMBER OF PAYMENTS	TOTAL PAYMENTS	NUMBER OF PAYMENTS	TOTAL PAYMENTS
ARIZONA	0	0	0	0	0	0	0
DISTRICT I							
MARICOPA	0	0	0	0	0	0	0
DISTRICT II							
PIMA	0	0	0	0	0	0	0
DISTRICT III							
APACHE	0	0	0	0	0	0	0
COCONINO	0	0	0	0	0	0	0
NAVAJO	0	0	0	0	0	0	0
YAVAPAI	0	0	0	0	0	0	0
DISTRICT IV							
LA PAZ	0	0	0	0	0	0	0
MOHAVE	0	0	0	0	0	0	0
YUMA	0	0	0	0	0	0	0
DISTRICT V							
GILA	0	0	0	0	0	0	0
PINAL	0	0	0	0	0	0	0
DISTRICT VI							
COCHISE	0	0	0	0	0	0	0
GRAHAM	0	0	0	0	0	0	0
GREENLEE	0	0	0	0	0	0	0
SANTA CRUZ	0	0	0	0	0	0	0

1/EXCLUDES: PRIOR MONTH NET TOTALS OF : 0 CASES (PERSONS); \$0.  
 1/TABLE 5 IS BASED ON THE LOCATION OF THE OFFICE THAT PROCEEDS THE APPLICATION.

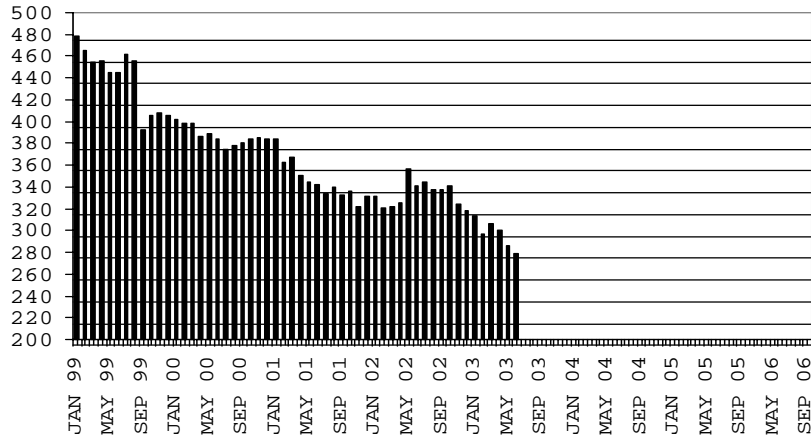
# CHART 5

## SUPPLEMENTAL PAYMENTS PROGRAM

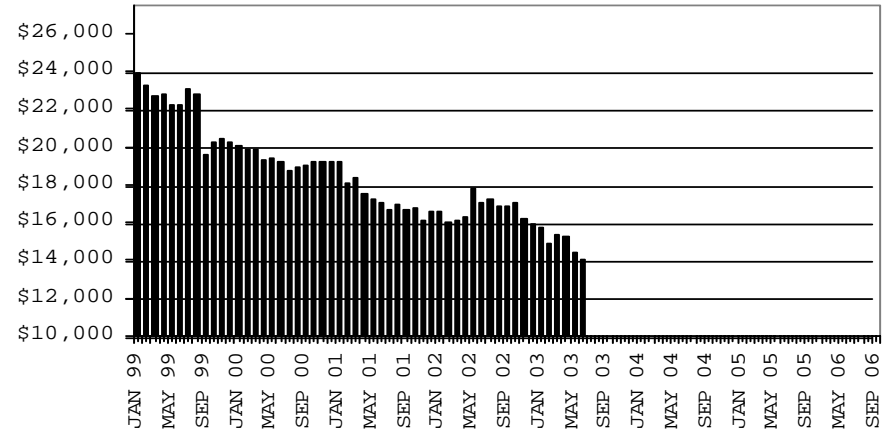
### COMPARISON OF CASES, PAYMENTS & AVERAGE PAYMENTS

FOR 1999, 2000, 2001, 2002, 2003, 2004, 2005, 2006 & 2007

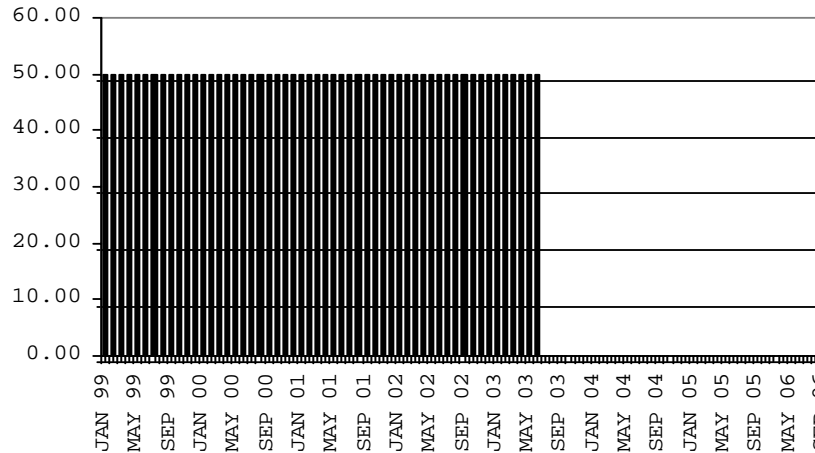
**CASES**



**PAYMENTS**



**AVERAGE PAYMENT PER CASE**



**TABLE 6**  
**FOOD STAMP PROGRAM: ARIZONA 1/**

	CHANGE FROM										
	SEPTEMBER 2007					AUGUST 2007			SEPTEMBER 2006		
	HOUSEHOLDS	PERSONS	TOTAL COUPON ISSUANCE	AVERAGE ALLOT./ HOUSEHOLD	AVERAGE ALLOT./ PERSON	HOUSEHOLDS	PERSONS	TOTAL COUPON ISSUANCE	HOUSEHOLDS	PERSONS	TOTAL COUPON ISSUANCE
ARIZONA	235,034	575,269	56,044,123	238.45	97.42	3,696	9,397	928,433	16,541	38,270	4,876,030
DISTRICT I											
MARICOPA	116,291	283,923	28,242,230	242.86	99.47	2,018	5,616	612,502	9,305	22,700	2,806,207
DISTRICT II											
PIMA	41,933	96,422	9,425,980	224.79	97.76	581	1,268	91,619	2,375	4,669	636,221
DISTRICT III											
APACHE	6,338	19,757	1,820,536	287.24	92.15	(9)	(115)	(26,799)	112	35	56,122
COCONINO	5,323	15,798	1,430,941	268.82	90.58	82	268	19,830	320	533	89,271
NAVAJO	9,359	26,561	2,464,907	263.37	92.80	6	(86)	(8,921)	596	1,613	193,640
YAVAPAI	6,366	12,887	1,218,929	191.47	94.59	77	161	9,914	295	585	75,394
DISTRICT IV											
LA PAZ	1,266	2,820	281,088	222.03	99.68	8	8	2,427	17	69	2,843
MOHAVE	10,474	22,310	2,210,022	211.00	99.06	149	225	34,860	916	2,179	252,962
YUMA	10,495	28,665	2,612,845	248.96	91.15	279	815	81,775	546	1,124	144,810
DISTRICT V											
GILA	3,470	8,163	808,846	233.10	99.09	11	5	2,511	148	197	26,558
PINAL	12,092	30,574	3,006,192	248.61	98.33	389	1,020	99,779	1,725	4,705	529,375
DISTRICT VI											
COCHISE	6,731	15,045	1,409,032	209.33	93.65	60	94	7,248	154	(100)	35,585
GRAHAM	2,050	4,811	444,907	217.03	92.48	0	(11)	(8,839)	(88)	(372)	(29,193)
GREENLEE	261	552	53,397	204.59	96.73	4	25	3,401	(25)	(74)	(2,355)
SANTA CRUZ	2,585	6,981	614,271	237.63	87.99	41	104	7,126	145	407	58,590

1/EXCLUDES: PRIOR MONTH NET TOTALS OF : 8,722 CASES; 23,447 RECIPIENTS; \$1,088,558.  
 AGED CANCELATIONS: 0 CASES; 0 RECIPIENTS; 0.  
 FS COUPON CONVERSIONS: 0 CASES; 0 RECIPIENTS; \$0.  
 FS REINSTATED: 0 CASES; \$0.  
 FS ZERO PAY: 2,272 CASES; 8,460 RECIPIENTS.

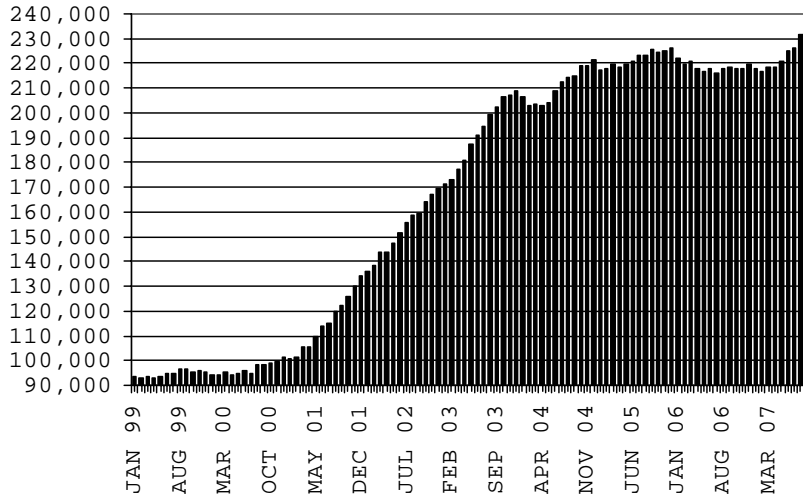
# CHART 6

## FOOD STAMPS PROGRAM

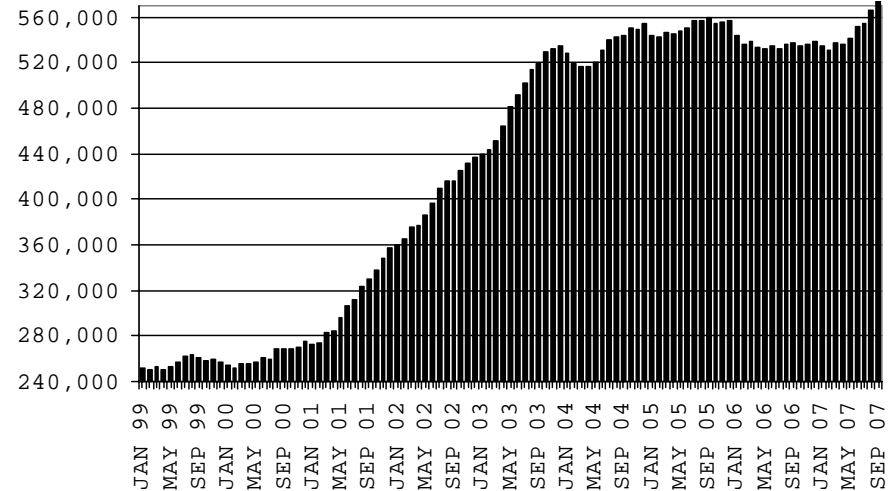
### COMPARISON OF HOUSEHOLDS, RECIPIENTS, PAYMENTS & AVERAGE PAYMENTS

FOR 1999, 2000, 2001, 2002, 2003, 2004, 2005, 2006 & 2007

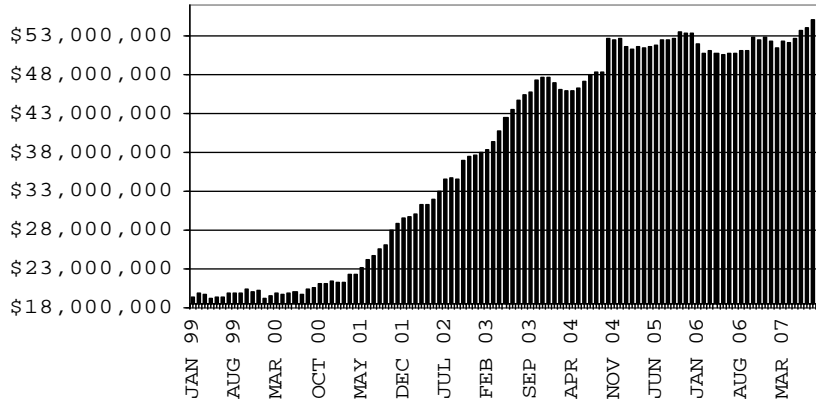
#### HOUSEHOLDS



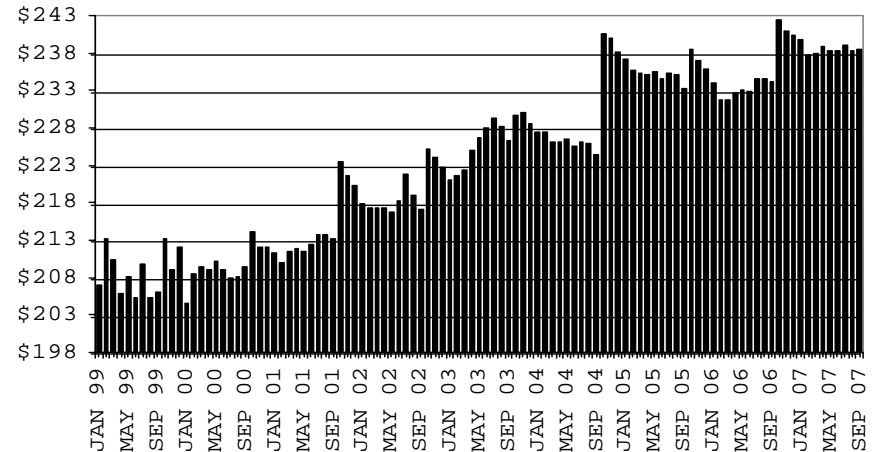
#### RECIPIENTS



#### TOTAL PAYMENTS



#### AVERAGE PAYMENT PER HOUSEHOLD



**TABLE 7A**  
**MEDICAL ASSISTANCE PROGRAM**  
**RECIPIENTS**

**SEPTEMBER 2007**

	SOBRA WOMAN 133% FPL	SOBRA CHILD	ADULT W/O CHILD 100% FPL	FOSTER CARE	1931 36% FPL	FEDERAL EMERGENCY SERVICES	INFANTS	ADULT W/O CHILD 40% FPL	MEDICAL W/SPEND DOWN	SOBRA WOMAN 100% FPL	SOBRA CHILD 100% FPL	TRANSITIONAL MEDICAL T1 - T4	1931 100% FPL	YATI	OTHER	TOTAL RECIPIENTS
ARIZONA	11,763	62,057	37,408	9,375	258,252	86,674	51,083	86,058	5,452	3,528	159,063	42,263	75,841	234	21,770	910,821
DISTRICT I																
MARICOPA	6,029	34,255	15,838	4,674	132,920	66,566	30,770	37,169	2,985	1,777	87,623	21,088	34,812	116	10,732	487,354
DISTRICT II																
PIMA	1,822	9,579	7,342	2,634	40,837	10,902	7,110	15,885	760	545	25,089	7,062	13,585	72	3,839	147,063
DISTRICT III																
APACHE	263	1,388	874	42	10,520	88	969	4,153	63	101	3,830	1,175	2,347	0	343	26,156
COCONINO	387	1,412	1,141	123	6,905	505	1,175	2,794	84	103	3,507	1,284	2,064	13	347	21,844
NAVAJO	376	2,127	1,295	116	11,077	318	1,383	4,598	154	133	4,429	1,407	2,770	3	509	30,695
YAVAPAI	459	1,791	1,657	399	5,271	1,544	1,447	2,687	307	108	3,957	1,360	2,327	13	883	24,210
DISTRICT IV																
LA PAZ	41	208	187	15	1,219	190	183	560	20	23	599	172	322	0	132	3,871
MOHAVE	486	2,134	1,935	236	9,053	960	1,617	4,315	315	160	6,228	1,776	3,484	2	1,174	33,875
YUMA	622	2,630	2,391	255	11,169	2,329	1,965	3,299	190	197	8,377	1,995	5,250	1	1,141	41,811
DISTRICT V																
GILA	127	762	485	78	4,032	152	481	1,872	105	37	1,468	484	940	0	273	11,296
PINAL	635	3,574	1,830	448	13,943	1,760	2,243	4,834	250	175	6,750	2,081	3,535	8	1,152	43,218
DISTRICT VI																
COCHISE	259	1,109	1,315	255	6,157	697	861	2,241	125	85	3,549	1,180	2,179	5	720	20,737
GRAHAM	130	434	377	60	2,089	63	360	846	28	35	1,059	552	637	1	134	6,805
GREENLEE	30	37	47	10	318	7	63	107	8	1	120	70	70	0	25	913
SANTA CRUZ	97	617	694	30	2,742	593	456	698	58	48	2,478	577	1,519	0	366	10,973

**TABLE 7B**

**MEDICAL ASSISTANCE PROGRAM**

**RECIPIENTS**

**CHANGE FROM**

**AUGUST 2007**

	SOBRA WOMAN 133% FPL	SOBRA CHILD	ADULT W/O CHILD 100% FPL	FOSTER CARE	1931 36% FPL	FEDERAL EMERGENCY SERVICES	INFANTS	ADULT W/O CHILD 40% FPL	MEDICAL W/SPEND DOWN	SOBRA WOMAN 100% FPL	SOBRA CHILD 100% FPL	TRANSITIONAL MEDICAL T1 - T4	1931 100% FPL	YATI	OTHER	TOTAL RECIPIENTS
ARIZONA	43	503	695	106	4,502	811	385	2,209	280	37	2,615	(203)	1,210	8	374	13,575
DISTRICT I																
MARICOPA	70	317	214	27	2,991	690	280	1,052	127	15	1,750	(60)	719	7	164	8,363
DISTRICT II																
PIMA	(15)	179	163	48	915	76	15	536	82	11	253	(141)	177	1	68	2,368
DISTRICT III																
APACHE	12	(33)	10	2	(178)	(8)	4	(17)	(1)	(2)	69	35	63	0	13	(31)
COCONINO	(22)	47	56	(2)	(87)	(1)	4	70	0	15	79	(2)	3	1	7	168
NAVAJO	3	(67)	34	(3)	(121)	4	23	71	(8)	22	113	93	54	(1)	8	225
YAVAPAI	8	12	22	7	11	(14)	15	107	0	4	79	3	28	1	12	295
DISTRICT IV																
LA PAZ	(2)	(5)	(1)	(3)	18	15	8	1	(1)	(2)	(27)	23	(11)	0	(1)	12
MOHAVE	(9)	(13)	55	4	156	(9)	(32)	133	29	(5)	39	66	(19)	0	16	411
YUMA	13	39	34	(2)	285	36	24	97	16	(11)	86	(89)	35	0	9	572
DISTRICT V																
GILA	(11)	2	(7)	(1)	22	(4)	0	40	8	3	(34)	(2)	(11)	(1)	10	14
PINAL	11	33	66	25	396	(5)	30	111	7	(5)	28	(46)	36	0	36	723
DISTRICT VI																
COCHISE	(4)	2	32	0	113	4	7	24	14	(3)	53	(25)	48	0	15	280
GRAHAM	(11)	(8)	12	3	(29)	5	1	(10)	1	(2)	64	(16)	15	0	7	32
GREENLEE	3	5	2	0	21	1	8	(4)	0	(1)	(1)	(15)	6	0	3	28
SANTA CRUZ	(3)	(7)	3	1	(11)	21	(2)	(2)	6	(2)	64	(27)	67	0	7	115

**TABLE 7C**  
**MEDICAL ASSISTANCE PROGRAM**  
**RECIPIENTS**

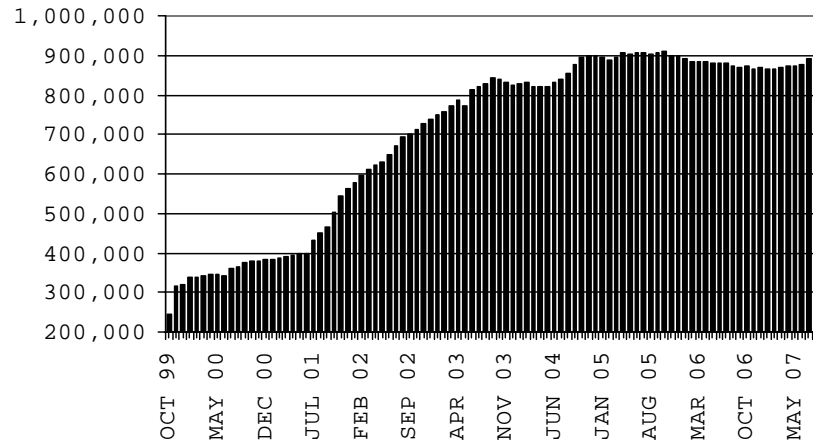
**CHANGE FROM**  
**SEPTEMBER 2006**

	SOBRA WOMAN 133% FPL	SOBRA CHILD	ADULT W/O CHILD 100% FPL	FOSTER CARE	1931 36% FPL	FEDERAL EMERGENCY SERVICES	INFANTS	ADULT W/O CHILD 40% FPL	MEDICAL W/SPEND DOWN	SOBRA WOMAN 100% FPL	SOBRA CHILD 100% FPL	TRANSITIONAL MEDICAL T1 - T4	3E 1931 100% FPL	YATI	OTHER	TOTAL RECIPIENTS
ARIZONA	546	3,891	1,299	594	5,781	4,022	1,410	6,157	(41)	303	11,855	(2,108)	4,486	52	2,577	40,824
DISTRICT I																
MARICOPA	238	2,881	602	246	5,361	4,041	431	2,473	(42)	242	7,814	(1,295)	2,785	20	1,266	27,063
DISTRICT II																
PIMA	108	380	268	161	489	569	309	1,354	22	(36)	1,557	(203)	630	15	389	6,012
DISTRICT III																
APACHE	3	(79)	(25)	2	(438)	(19)	(15)	124	(2)	14	48	61	57	(1)	50	(220)
COCONINO	19	12	(26)	23	(283)	(43)	8	96	(45)	10	(213)	(123)	(51)	8	27	(581)
NAVAJO	37	23	(5)	(10)	(28)	16	75	450	15	20	272	(115)	140	3	70	963
YAVAPAI	(3)	40	50	34	140	(39)	35	273	45	(4)	234	(398)	122	6	78	613
DISTRICT IV																
LA PAZ	(1)	(10)	(44)	(1)	(68)	(22)	11	14	(3)	4	70	26	(1)	0	12	(13)
MOHAVE	(19)	83	205	11	75	(25)	83	346	(76)	0	705	109	151	0	152	1,800
YUMA	88	145	184	41	(497)	(313)	24	125	(10)	17	604	(50)	296	(3)	149	800
DISTRICT V																
GILA	(3)	(30)	(21)	(2)	(31)	(24)	35	75	11	(4)	(78)	25	0	(4)	11	(40)
PINAL	46	520	159	90	1,189	(11)	296	730	34	17	867	(38)	333	4	234	4,470
DISTRICT VI																
COCHISE	16	(41)	(2)	2	(128)	(84)	11	49	2	8	(14)	93	(18)	3	71	(32)
GRAHAM	9	(34)	(6)	(3)	(145)	(13)	31	10	(3)	14	(14)	(93)	(36)	1	6	(276)
GREENLEE	9	(12)	3	0	(36)	(1)	10	(36)	0	(1)	(42)	4	(5)	0	5	(102)
SANTA CRUZ	(1)	13	(43)	0	181	(10)	66	74	11	2	45	(111)	83	0	57	367

# CHART 7

## MEDICAL ASSISTANCE PROGRAM COMPARISON OF RECIPIENTS FOR 1999, 2000, 2001, 2002, 2003, 2004, 2005, 2006 & 2007

### TOTAL RECIPIENTS



NEW SERIES WHICH INCLUDES 1931