



State of Arizona

Department of Economic Security

Family Assistance Administration

Statistical Bulletin

December, 2007

Phone: (602) 542-3678

<http://www.azdes.gov/faa/Statistics.asp>

**** STATISTICAL BULLETIN ****
ARIZONA DEPARTMENT OF ECONOMIC SECURITY
FAMILY ASSISTANCE ADMINISTRATION
BOX 6123, PHOENIX, ARIZONA 85005
PHONE (602) 542-3678

DECEMBER, 2007

THIS ISSUE OF THE STATISTICAL BULLETIN COMPARES DECEMBER, 2007 DATA FOR EACH OF THE INDICATED PROGRAMS WITH THE INFORMATION FOR NOVEMBER, 2007 AND DECEMBER, 2006. STATEWIDE SUMMARIES OF ACTIVITY WITHIN EACH OF THE SPECIFIC PROGRAMS FOR THIS REPORT PERIOD ARE DISCUSSED BELOW. THE TABLES COMPARE CURRENT AND PRIOR MONTH DATA. DISTRICT AND COUNTY COMPARISONS ARE PROVIDED WITHIN THIS BULLETIN

CASH ASSISTANCE (CA)

COMPARING TO NOVEMBER, 2007, DECEMBER, 2007 CASES DECREASED BY 131 (0.36%) TO 36,482. RECIPIENTS DECREASED BY 411 (0.52%) TO 78,219. PAYMENTS DECREASED BY \$59,521 (0.61%) TO \$9,727,319. AVERAGE PAYMENT PER CASE DECREASED BY \$0.68 (0.25%) TO \$266.63. PAYMENT PER RECIPIENT DECREASED BY \$0.11 (0.09%) TO \$124.36.

COMPARING TO DECEMBER, 2006, DECEMBER, 2007 CASES DECREASED BY 418 (1.13%). RECIPIENTS DECREASED BY 1,914 (2.39%). TOTAL PAYMENTS DECREASED BY \$220,126 (2.21%). THE AVERAGE PAYMENT PER CASE DECREASED BY \$2.95 (1.09%). THE AVERAGE PAYMENT PER RECIPIENT INCREASED BY \$0.22 (0.18%).

CASH ASSISTANCE UNEMPLOYED PARENT PROGRAM (CA-UP)

COMPARING TO NOVEMBER, 2007, DECEMBER, 2007 CASES INCREASED BY 58 (8.33%) TO 754. RECIPIENTS INCREASED BY 154 (5.71%) TO 2,851. PAYMENTS INCREASED BY \$11,404 (4.46%) TO \$267,208. AVERAGE PAYMENT PER CASE DECREASED BY \$13.14 (3.58%) TO \$354.39. PAYMENT PER RECIPIENT DECREASED BY \$1.13 (1.19%) TO \$93.72.

COMPARING TO DECEMBER, 2006, DECEMBER, 2007 CASES INCREASED BY 188 (33.22%). RECIPIENTS INCREASED BY 686 (31.69%). TOTAL PAYMENTS INCREASED BY \$56,189 (26.63%). THE AVERAGE PAYMENT PER CASE DECREASED BY \$18.44 (4.95%). THE AVERAGE PAYMENT PER RECIPIENT DECREASED BY \$3.75 (3.85%).

CASH ASSISTANCE WITH GRANT UNDER \$100 (CA-MOE)

COMPARING TO NOVEMBER, 2007, DECEMBER, 2007 CASES DECREASED BY 17 (2.59%) TO 640. RECIPIENTS DECREASED BY 70 (5.06%) TO 1,313. PAYMENTS DECREASED BY \$491 (1.01%) TO \$47,973. AVERAGE PAYMENT PER CASE INCREASED BY \$1.19 (1.61%) TO \$74.96. AVERAGE PAYMENT PER RECIPIENT INCREASED BY \$1.50 (4.28%) TO \$36.54.

COMPARING TO DECEMBER, 2006, DECEMBER, 2007 CASES DECREASED BY 69 (9.73%). RECIPIENTS DECREASED BY 175 (11.76%). TOTAL PAYMENTS DECREASED BY \$5,742 (10.69%). THE AVERAGE PAYMENT PER CASE DECREASED BY \$0.80 (1.06%). THE AVERAGE PAYMENT PER RECIPIENT INCREASED BY \$0.44 (1.22%).

CASH ASSISTANCE UNEMPLOYED PARENT PROGRAM WITH GRANT UNDER \$100 (CA-UP-MOE) NEW PROGRAM STARTING 7/01

COMPARING TO NOVEMBER, 2007, DECEMBER, 2007 CASES DECREASED BY 3 (21.43%) TO 11. RECIPIENTS DECREASED BY 14 (29.79%) TO 33. PAYMENTS DECREASED BY \$206 (30.98%) TO \$459. AVERAGE PAYMENT PER CASE DECREASED BY \$5.77 (12.15%) TO \$41.73. PAYMENT PER RECIPIENT DECREASED BY \$0.24 (1.70%) TO \$13.91.

COMPARING TO DECEMBER, 2006, DECEMBER, 2007 CASES DECREASED BY 3 (21.43%). RECIPIENTS DECREASED BY 14 (2.11%). TOTAL PAYMENTS DECREASED BY \$267 (36.78%). THE AVERAGE PAYMENT PER CASE DECREASED BY \$10.13 (19.53%). THE AVERAGE PAYMENT PER RECIPIENT DECREASED BY \$1.54 (9.97%).

GENERAL ASSISTANCE (GA)

COMPARING TO NOVEMBER, 2007, DECEMBER, 2007 CASES DECREASED BY 21 (1.56%) TO 1,325. RECIPIENTS DECREASED BY 20 (1.48%) TO 1,330. PAYMENTS DECREASED BY \$3,779 (1.84%) TO \$201,881. AVERAGE PAYMENT PER CASE DECREASED BY \$0.43 (0.28%) TO \$152.36. AVERAGE PAYMENT PER RECIPIENT DECREASED BY \$0.55 (0.36%) TO \$151.79.

COMPARING TO DECEMBER, 2006, DECEMBER, 2007 CASES INCREASED BY 10 (0.76%). RECIPIENTS INCREASED BY 9 (0.68%). TOTAL PAYMENTS INCREASED BY \$2,573 (1.29%). THE AVERAGE PAYMENT PER CASE INCREASED BY \$0.79 (0.52%). THE AVERAGE PAYMENT PER RECIPIENT INCREASED BY \$0.91 (0.61%).

TUBERCULOSIS CONTROL PROGRAM (TC)

COMPARING TO NOVEMBER, 2007, DECEMBER, 2007 CASES DECREASED BY 3 (25.00%) TO 9. RECIPIENTS DECREASED BY 3 (25.00%) TO 9. PAYMENTS DECREASED BY \$317 (22.94%) TO \$1,065. AVERAGE PAYMENT PER CASE INCREASED BY \$3.16 (2.75%) TO \$118.33. AVERAGE PAYMENT PER RECIPIENT INCREASED BY \$3.16 (2.75%) TO \$118.33.

COMPARING TO DECEMBER, 2006, DECEMBER, 2007 CASES DECREASED BY 5 (35.71%). RECIPIENTS DECREASED BY 5 (35.71%). TOTAL PAYMENTS DECREASED BY \$647 (37.79%). THE AVERAGE PAYMENT PER CASE DECREASED BY \$3.96 (3.23%). THE AVERAGE PAYMENT PER RECIPIENT DECREASED BY \$3.96 (3.23%).

SUPPLEMENTAL PAYMENTS PROGRAM (SPP)

AS A RESULT OF ARIZONA'S OMNIBUS BUDGET RECONCILIATION BILL, HB 2535, THE SUPPLEMENTAL PAYMENT PROGRAM (SPP) IS BEING SUSPENDED EFFECTIVE JULY, 2003 THROUGH JUNE, 2004.

FOOD STAMP PROGRAM (FS)

COMPARING TO NOVEMBER, 2007, DECEMBER, 2007 FOOD STAMP HOUSEHOLDS INCREASED BY 3,957 (1.64%) TO 245,225. PERSONS RECEIVING FOOD STAMPS INCREASED BY 8,670 (1.47%) TO 597,929. TOTAL COUPON ISSUANCE INCREASED BY \$367,896 (0.61%) TO \$61,003,345. THE AVERAGE HOUSEHOLD ALLOTMENT DECREASED BY \$2.56 (1.02%) TO \$248.76. THE AVERAGE ALLOTMENT PER PERSON DECREASED BY \$0.88 (0.86%) TO \$102.02.

COMPARING TO DECEMBER, 2006, DECEMBER, 2007 FOOD STAMP HOUSEHOLDS INCREASED BY 25,609 (11.66%). PERSONS RECEIVING FOOD STAMPS INCREASED BY 58,802 (10.91%). TOTAL COUPON ISSUANCE INCREASED BY \$8,193,442 (15.51%). THE AVERAGE ALLOTMENT PER HOUSEHOLD INCREASED BY \$8.30 (3.45%). THE AVERAGE ALLOTMENT PER PERSON INCREASED BY \$4.07 (4.15%).

MEDICAL ASSISTANCE PROGRAM (MA) NEW TABLE INCLUDES PROP. 204 CATEGORIES

COMPARING TO NOVEMBER, 2007, DECEMBER, 2007 TOTAL RECIPIENTS TOTAL RECIPIENTS DECREASED BY 914,880 (100.00%). SOBRA WOMEN AT 140% FPL DECREASED BY 11,496 (100.00%). SOBRA CHILDREN DECREASED BY 61,960 (100.00%). ADULTS W/O CHILD AT 100% DECREASED BY 37,717 (100.00%). FOSTER CARE DECREASED BY 9,714 (100.00%). 1931 AT 36% FPL DECREASED BY 259,169 (100.00%). EMERGENCY SERVICES DECREASED BY 85,189 (100.00%). INFANTS DECREASED BY 50,658 (100.00%). ADULT W/O CHILD AT 140% DECREASED BY 89,099 (100.00%). MEDICAL W/SPEND DOWN DECREASED BY 5,299 (100.00%). SOBRA WOMAN AT 100% DECREASED BY 3,321 (100.00%). SOBRA CHILD AT 100% DECREASED BY 159,488 (100.00%). TRANSITIONAL MEDICAL DECREASED BY 42,775 (100.00%). 1931 AT 100% DECREASED BY 76,526 (100.00%). YATI DECREASED BY 241 (100.00%). ALL OTHER CATEGORIES DECREASED BY 22,228 (100.00%).

COMPARING TO DECEMBER, 2006, DECEMBER, 2007 TOTAL RECIPIENTS TOTAL RECIPIENTS DECREASED BY 867,921 (100.00%). SOBRA WOMEN AT 140% FPL DECREASED BY 10,877 (100.00%). SOBRA CHILDREN DECREASED BY 58,628 (100.00%). ADULTS W/O CHILD AT 100% DECREASED BY 36,063 (100.00%). FOSTER CARE DECREASED BY 8,795 (100.00%). 1931 AT 36% FPL DECREASED BY 248,798 (100.00%). EMERGENCY SERVICES DECREASED BY 82,561 (100.00%). INFANTS DECREASED BY 49,965 (100.00%). ADULT W/O CHILD AT 140% DECREASED BY 78,030 (100.00%). MEDICAL W/SPEND DOWN DECREASED BY 5,345 (100.00%). SOBRA WOMAN AT 100% DECREASED BY 3,183 (100.00%). SOBRA CHILD AT 100% DECREASED BY 148,194 (100.00%). TRANSITIONAL MEDICAL DECREASED BY 46,704 (100.00%). 1931 AT 100% DECREASED BY 70,929 (100.00%). YATI DECREASED BY 189 (100.00%). ALL OTHER CATEGORIES DECREASED BY 19,660 (100.00%).

TANF SUMMARY

TABLES 1, 1A, 1B, & 1C: ARIZONA 1

	DECEMBER, 2007							NOVEMBER, 2007			CHANGE FROM DECEMBER, 2006		
	FAMILIES (CASES)	PERSONS (RECIP.)	ADULTS	CHILDREN	TOTAL PAYMENTS	AVERAGE PAYMENT/ CASE	AVERAGE PAYMENT/ RECIP.	FAMILIES (CASES)	PERSONS (RECIP.)	TOTAL PAYMENTS	FAMILIES (CASES)	PERSONS (RECIP.)	TOTAL PAYMENTS
	ARIZONA	37,887	82,416	20,338	62,078	10,042,959	265.08	121.86	(89)	(335)	(48,728)	(296)	(1,397)
DISTRICT I													
MARICOPA	20,852	45,877	10,518	35,359	5,565,217	266.89	121.31	49	63	3,546	180	138	1,515
DISTRICT II													
PIMA	7,131	14,990	3,908	11,082	1,872,791	262.63	124.94	(135)	(320)	(34,667)	(342)	(857)	(112,123)
DISTRICT III													
APACHE	129	278	85	193	33,431	259.16	120.26	(10)	(23)	(1,796)	4	3	1,667
COCONINO	270	580	146	434	65,983	244.38	113.76	(3)	(13)	(605)	(11)	(29)	(5,559)
NAVAJO	1,404	3,477	1,007	2,470	388,927	277.01	111.86	22	111	4,723	(55)	(155)	(19,221)
YAVAPAI	677	1,311	295	1,016	167,919	248.03	128.08	10	31	1,264	(3)	(35)	1,406
DISTRICT IV													
LA PAZ	248	528	165	363	61,202	246.78	115.91	5	(2)	(1,219)	(32)	(106)	(11,697)
MOHAVE	1,429	2,992	881	2,111	371,243	259.79	124.08	2	(29)	(2,676)	(1)	33	5,585
YUMA	1,250	2,780	648	2,132	333,674	266.94	120.03	(55)	(146)	(15,451)	(62)	(233)	(23,573)
DISTRICT V													
GILA	794	1,705	589	1,116	210,915	265.64	123.70	26	36	4,448	(8)	(123)	(10,616)
PINAL	1,982	4,459	1,169	3,290	530,583	267.70	118.99	(44)	(135)	(14,125)	83	182	23,016
DISTRICT VI													
COCHISE	1,014	2,010	542	1,468	261,332	257.72	130.02	29	61	7,545	(14)	(77)	(4,854)
GRAHAM	383	734	228	506	93,421	243.92	127.28	9	16	(329)	(48)	(131)	(18,636)
GREENLEE	52	114	31	83	13,449	258.63	117.97	0	(1)	(617)	11	22	2,420
SANTA CRUZ	272	581	126	455	72,872	267.91	125.43	6	16	1,231	2	(29)	918

1/EXCLUDES: PRIOR MONTH NET TOTALS OF 1,835 CASES; 4,456 RECIPIENTS; \$379,384.

1/GRANT DIVERSION TOTALS OF: 130 CASES; \$136,455.

ZERO PAY TOTALS OF 550 CASES; 1,569 RECIPIENTS.

	CURRENT MO. CASES	CURRENT MO. RECIP.	CURRENT MO. DOLLARS	PRIOR MO. CASES	PRIOR MO. RECIP.	PRIOR MO. DOLLARS
PASQUAYAOUI	288	856	\$91,192	16	54	2,911
WM APACHE	731	1,936	\$218,040	16	47	2,705
SALT RIVER	91	324	\$28,266	3	11	769
NAVAJO	0	0	\$0	0	0	0
HOPI	156	450	\$36,254	10	28	765
TOTAL	1,266	3,566	\$373,752	45	140	\$7,150

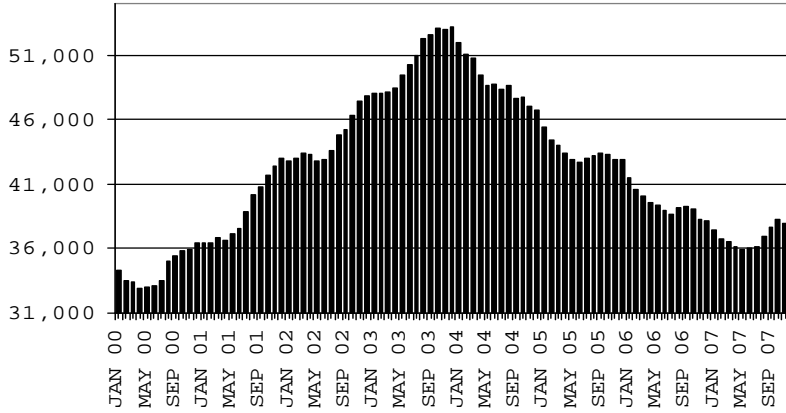
TANF SUMMARY

TABLES 1, 1A, 1B, & 1C

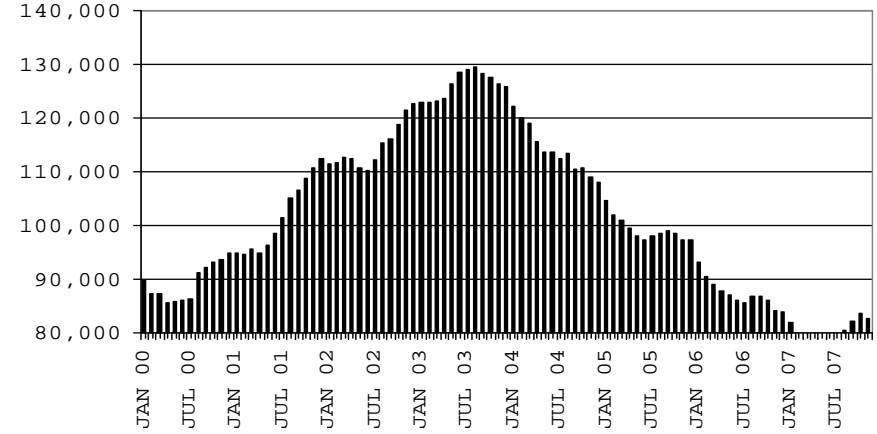
COMPARISON OF CASES, RECIPIENTS, PAYMENTS & AVERAGE PAYMENTS

FOR 2000, 2001, 2002, 2003, 2004, 2005, 2006, & 2007

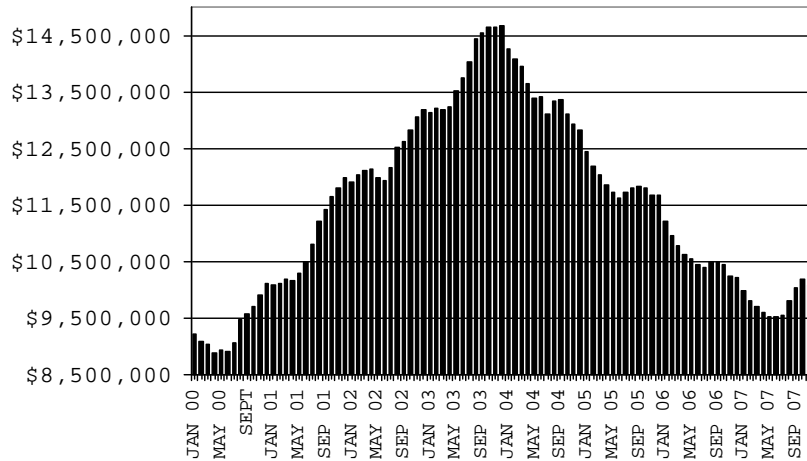
CASES



RECIPIENTS



PAYMENTS



AVERAGE PAYMENTS PER RECIPIENT

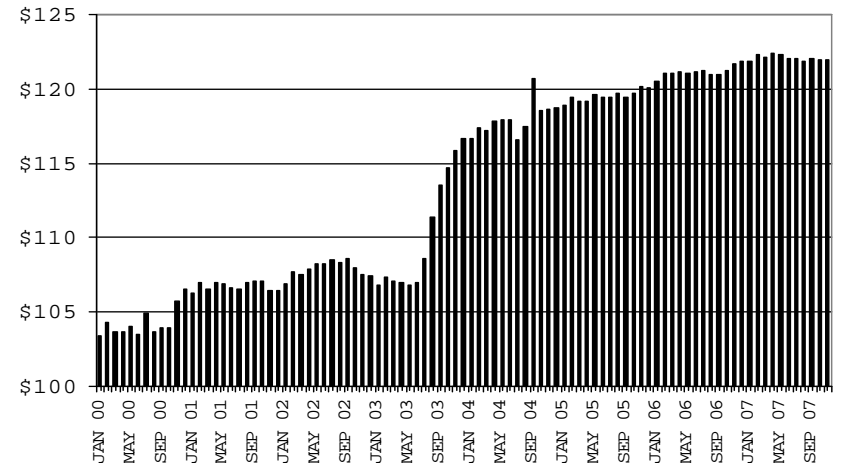


TABLE 1
CASH ASSISTANCE: ARIZONA 1

	DECEMBER, 2007							CHANGE FROM					
								NOVEMBER, 2007			DECEMBER, 2006		
	FAMILIES (CASES)	(RECIP.)	ADULTS	CHILDREN	TOTAL PAYMENTS	AVERAGE PAYMENT/ CASE	AVERAGE PAYMENT/ RECIP.	FAMILIES (CASES)	PERSONS (RECIP.)	TOTAL PAYMENTS	FAMILIES (CASES)	PERSONS (RECIP.)	TOTAL PAYMENTS
ARIZONA	36,482	78,219	18,735	59,484	9,727,319	266.63	124.36	(131)	(411)	(59,521)	(418)	(1,914)	(220,126)
DISTRICT I													
MARICOPA	20,192	43,997	9,907	34,090	5,429,992	268.92	123.42	27	13	(6,447)	104	(126)	(23,868)
DISTRICT II													
PIMA	6,857	14,182	3,578	10,604	1,811,588	264.20	127.74	(154)	(369)	(39,396)	(360)	(948)	(120,086)
DISTRICT III													
APACHE	120	255	76	179	32,020	266.83	125.57	(9)	(22)	(1,426)	1	(1)	1,430
COCONINO	262	561	137	424	64,985	248.03	115.84	(1)	(2)	(59)	(8)	(17)	(4,532)
NAVAJO	1,319	3,144	857	2,287	360,875	273.60	114.78	4	32	(472)	(70)	(214)	(22,049)
YAVAPAI	656	1,267	282	985	165,080	251.65	130.29	10	42	1,928	8	(12)	1,779
DISTRICT IV													
LA PAZ	231	481	146	335	58,757	254.36	122.16	5	9	425	(31)	(107)	(10,217)
MOHAVE	1,362	2,787	782	2,005	354,879	260.56	127.33	15	10	123	(1)	24	3,120
YUMA	1,191	2,584	572	2,012	318,635	267.54	123.31	(48)	(119)	(11,783)	(72)	(277)	(28,702)
DISTRICT V													
GILA	732	1,504	485	1,019	193,446	264.27	128.62	17	12	3,580	(25)	(180)	(15,050)
PINAL	1,900	4,169	1,048	3,121	507,587	267.15	121.75	(32)	(93)	(11,638)	84	149	19,098
DISTRICT VI													
COCHISE	979	1,917	505	1,412	253,253	258.69	132.11	22	44	4,866	(16)	(93)	(7,725)
GRAHAM	364	698	210	488	91,176	250.48	130.62	8	19	419	(50)	(119)	(17,261)
GREENLEE	50	109	29	80	13,331	266.62	122.30	0	1	(225)	11	26	2,843
SANTA CRUZ	267	564	121	443	71,715	268.60	127.15	5	12	584	7	(19)	1,094

1/EXCLUDES: PRIOR MONTH NET TOTALS OF: 1,040 CASES; 2,586 RECIPIENTS; \$298,242.
GRANT DIVERSION TOTALS OF: 130 CASES; \$136,455
ZERO PAY TOTALS OF 543 CASES; 1,539 RECIPIENTS.

CASES WITH GRANT UNDER \$100 (SEE TABLE 1B).

	CURRENT MO. CASES	CURRENT MO. RECIP.	CURRENT MO. DOLLARS	PRIOR MO. CASES	PRIOR MO. RECIP.	PRIOR MO. DOLLARS
PASQUAYAOUI	278	804	86,983	15	51	2,669
WM APACHE	679	1,721	199,140	13	35	1,990
SALT RIVER	91	324	28,266	3	11	769
NAVAJO	0	0	0	0	0	0
HOPÍ	156	450	36,254	10	28	765
TOTAL	1,204	3,299	350,643	41	125	6,193

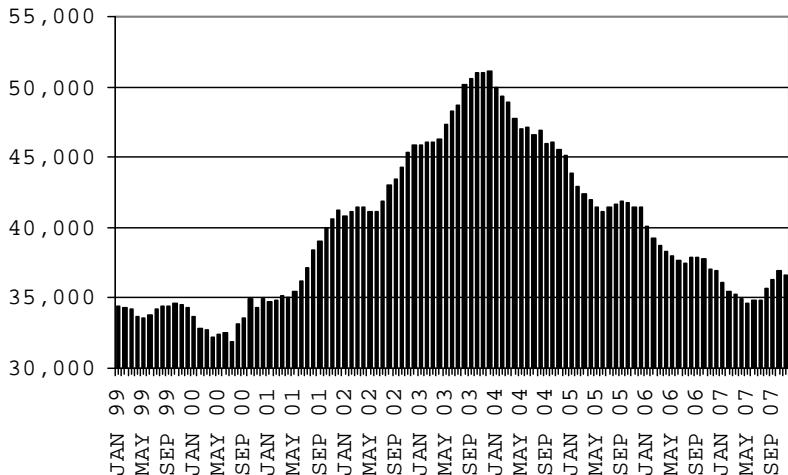
CHART 1

CASH ASSISTANCE PROGRAM

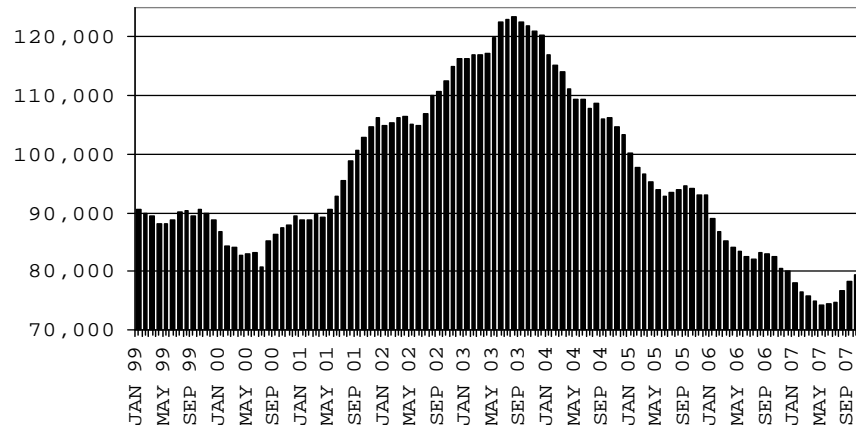
COMPARISON OF CASES, RECIPIENTS, PAYMENTS & AVERAGE PAYMENTS

FOR 1999, 2000, 2001, 2002, 2003, 2004, 2005, 2006 & 2007

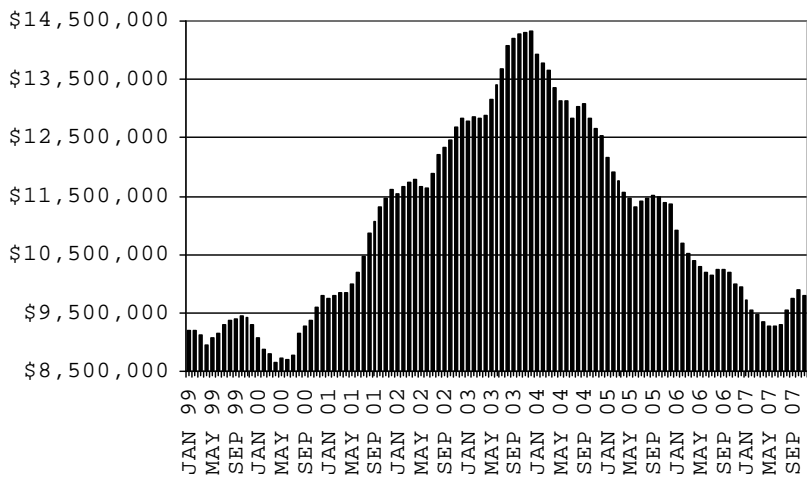
CASES



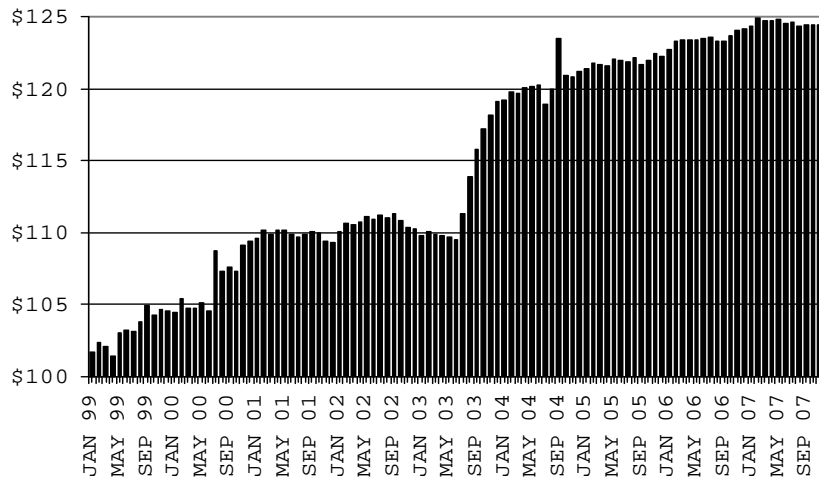
RECIPIENTS



PAYMENTS



AVERAGE PAYMENTS PER RECIPIENT



**TABLE 1A
CA-UP**

CASH ASSISTANCE UNEMPLOYED PARENT PROGRAM: ARIZONA 1

	DECEMBER, 2007							CHANGE FROM			DECEMBER, 2006		
	FAMILIES (CASES)	PERSONS (RECIP.)	ADULTS	CHILDREN	TOTAL PAYMENTS	AVERAGE PAYMENT/ CASE	AVERAGE PAYMENT/ RECIP.	FAMILIES (CASES)	PERSONS (RECIP.)	TOTAL PAYMENTS	FAMILIES (CASES)	PERSONS (RECIP.)	TOTAL PAYMENTS
ARIZONA	754	2,851	1,236	1,615	267,208	354.39	93.72	58	154	11,404	188	686	56,189
DISTRICT I													
MARICOPA	306	1,158	443	715	110,554	361.29	95.47	40	124	10,720	82	317	27,731
DISTRICT II													
PIMA	147	547	249	298	51,184	348.19	93.57	14	39	3,634	35	117	8,718
DISTRICT III													
APACHE	3	12	5	7	930	310.00	77.50	0	1	(124)	1	2	(49)
COCONINO	2	7	4	3	636	318.00	90.86	(1)	(9)	(488)	(2)	(10)	(953)
NAVAJO	74	307	141	166	27,183	367.34	88.54	14	66	4,907	17	61	2,916
YAVAPAI	6	20	6	14	1,767	294.50	88.35	(1)	(8)	(811)	2	11	723
DISTRICT IV													
LA PAZ	6	25	10	15	1,871	311.83	74.84	(4)	(17)	(1,768)	(4)	(3)	(1,248)
MOHAVE	41	151	77	74	14,165	345.49	93.81	(5)	(22)	(2,165)	8	36	2,779
YUMA	40	143	62	81	13,403	335.08	93.73	(6)	(31)	(3,296)	16	50	5,155
DISTRICT V													
GILA	49	175	93	82	16,364	333.96	93.51	8	24	849	15	57	4,555
PINAL	55	221	104	117	20,809	378.35	94.16	(4)	(20)	(1,438)	14	44	5,110
DISTRICT VI													
COCHISE	18	63	30	33	6,074	337.44	96.41	6	18	2,196	8	26	2,609
GRAHAM	5	14	10	4	1,432	286.40	102.29	(3)	(11)	(1,021)	(3)	(17)	(1,535)
GREENLEE	0	0	0	0	0	0.00	0.00	(1)	(4)	(418)	(1)	(5)	(489)
SANTA CRUZ	2	8	2	6	836	418.00	104.50	1	4	627	0	0	167

1/EXCLUDES: PRIOR MONTH NET TOTALS OF: 91 CASES; 365 RECIPIENTS; \$41,303.
GRANT DIVERSION TOTALS OF: 0 CASES; \$0.
ZERO PAY TOTALS OF 7 CASES; 30 RECIPIENTS.

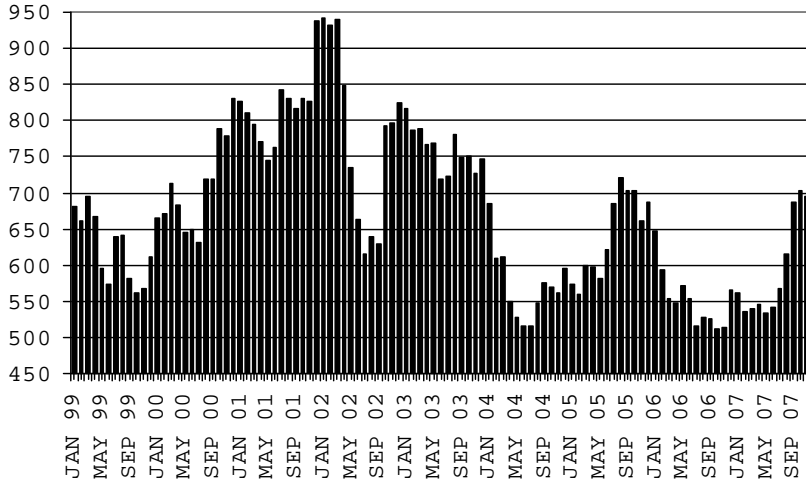
	CURRENT MO. CASES	CURRENT MO. RECIP.	CURRENT MO. DOLLARS	PRIOR MO. CASES	PRIOR MO. RECIP.	PRIOR MO. DOLLARS
PASQUAYAUQUI	10	52	4,209	1	3	242
WM APACHE	52	215	18,900	3	12	715
SALT RIVER	0	0	0	0	0	0
NAVAJO	0	0	0	0	0	0
HOPKI	0	0	0	0	0	0
TOTAL	62	267	23,109	4	15	957

CASES WITH GRANT UNDER \$100 (SEE TABLE 1C).

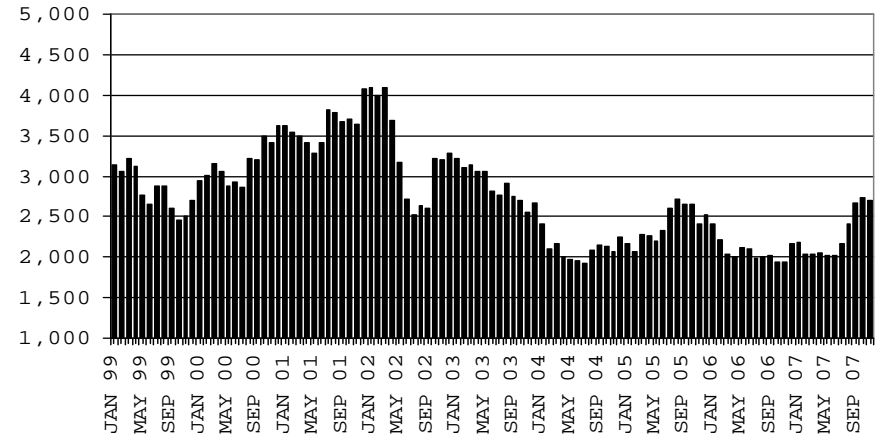
CHART 1A

CASH ASSISTANCE UNEMPLOYED PARENT PROGRAM COMPARISON OF CASES, RECIPIENTS, PAYMENTS & AVERAGE PAYMENTS FOR 1999, 2000, 2001, 2002, 2003, 2004, 2005, 2006 & 2007

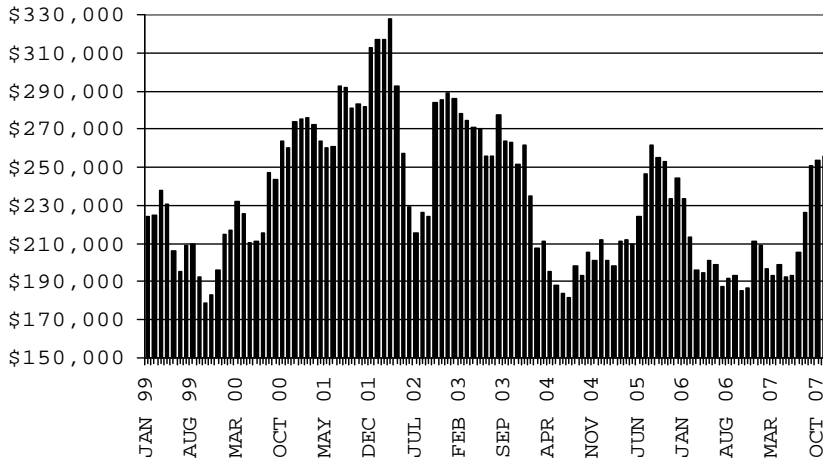
CASES



RECIPIENTS



PAYMENTS



AVERAGE PAYMENTS PER RECIPIENT

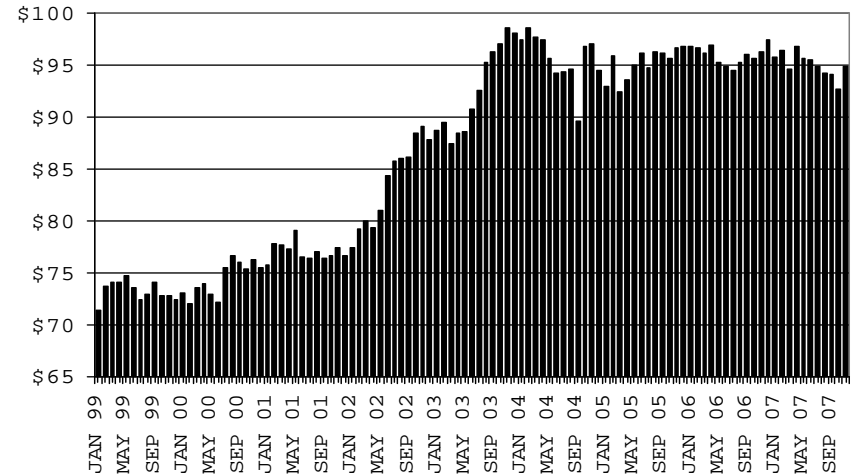


TABLE 1B 1/

CASH ASSISTANCE: ARIZONA
 CASES WITH GRANT UNDER \$100

	DECEMBER, 2007							CHANGE FROM			DECEMBER, 2006		
	FAMILIES (CASES)	PERSONS (RECIP.)	ADULTS	CHILDREN	TOTAL PAYMENTS	AVERAGE	AVERAGE	FAMILIES (CASES)	PERSONS (RECIP.)	TOTAL PAYMENTS	FAMILIES (CASES)	PERSONS (RECIP.)	TOTAL PAYMENTS
						PAYMENT/ CASE	PAYMENT/ RECIP.						
ARIZONA	640	1,313	353	960	47,973	74.96	36.54	(17)	(70)	(491)	(69)	(175)	(5,742)
DISTRICT I													
MARICOPA	350	713	166	547	24,454	69.87	34.30	(18)	(67)	(697)	(9)	(58)	(2,516)
DISTRICT II													
PIMA	124	251	75	176	9,916	79.97	39.51	5	10	1,122	(16)	(22)	(664)
DISTRICT III													
APACHE	6	11	4	7	481	80.17	43.73	(1)	(2)	(246)	2	2	286
COCONINO	6	12	5	7	362	60.33	30.17	(1)	(2)	(58)	(1)	(2)	(74)
NAVAJO	11	26	9	17	869	79.00	33.42	4	13	288	(2)	(2)	(88)
YAVAPAI	15	24	7	17	1,072	71.47	44.67	1	(3)	147	(13)	(34)	(1,096)
DISTRICT IV													
LA PAZ	9	17	7	10	542	60.22	31.88	3	6	134	1	(1)	(264)
MOHAVE	25	49	20	29	2,105	84.20	42.96	(8)	(17)	(647)	(9)	(32)	(408)
YUMA	18	49	12	37	1,623	90.17	33.12	(2)	0	(385)	(7)	(10)	(39)
DISTRICT V													
GILA	13	26	11	15	1,105	85.00	42.50	1	0	19	4	6	73
PINAL	27	69	17	52	2,187	81.00	31.70	(7)	(17)	(970)	(15)	(11)	(1,192)
DISTRICT VI													
COCHISE	17	30	7	23	2,005	117.94	66.83	1	(1)	483	(6)	(10)	262
GRAHAM	14	22	8	14	813	58.07	36.95	4	8	273	6	8	255
GREENLEE	2	5	2	3	118	59.00	23.60	1	2	26	1	1	66
SANTA CRUZ	3	9	3	6	321	107.00	35.67	0	0	20	(5)	(10)	(343)

EXCLUDES: PRIOR MONTH NET TOTALS OF 672 CASES; 1,406 RECIPIENTS; \$38,190.

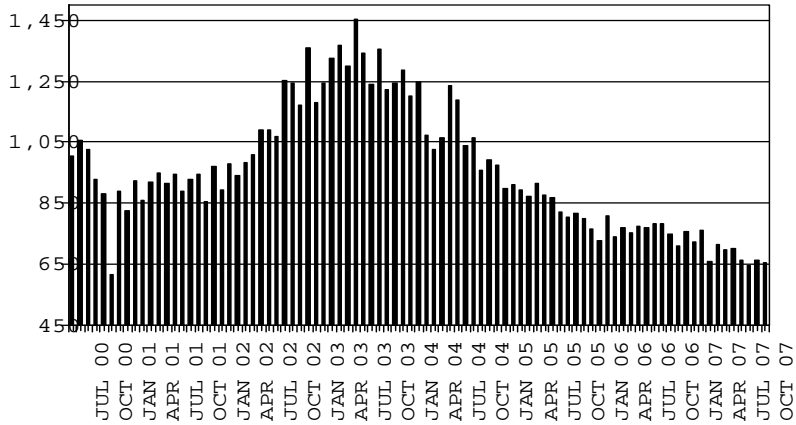
CHART 1B

CASH ASSISTANCE PROGRAM CASES WITH GRANT UNDER \$100

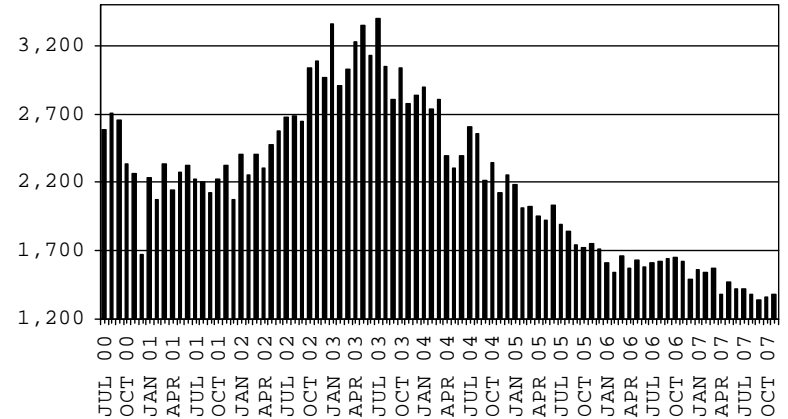
COMPARISON OF CASES, RECIPIENTS, PAYMENTS & AVERAGE PAYMENTS

FOR 2000, 2001, 2002, 2003, 2004, 2005, 2006 & 2007

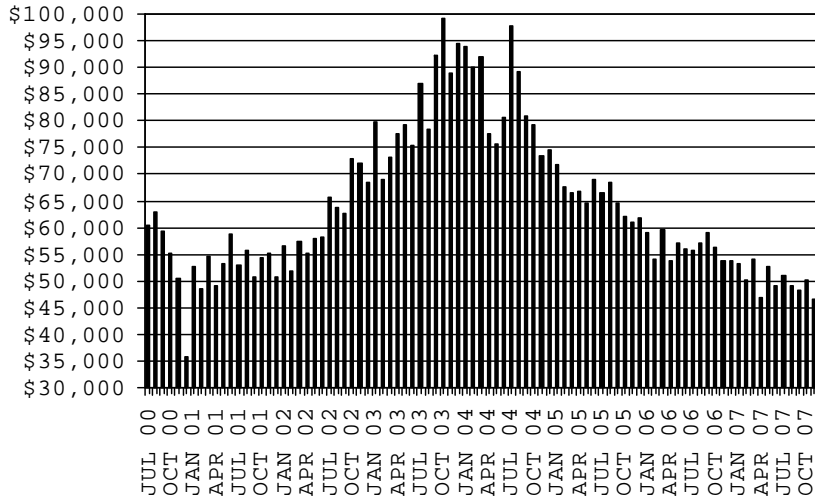
CASES



RECIPIENTS



PAYMENTS



AVERAGE PAYMENTS PER RECIPIENT

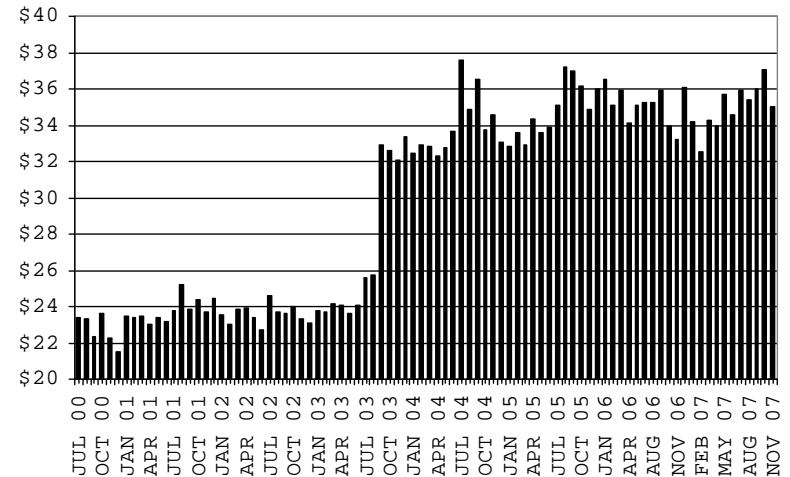


TABLE 1C 1/

CASH ASSISTANCE UNEMPLOYED PARENT PROGRAM: ARIZONA
CASES WITH GRANT UNDER \$100

	DECEMBER, 2007								CHANGE FROM			DECEMBER, 2006		
					TOTAL		AVERAGE		NOVEMBER, 2007			DECEMBER, 2006		
	FAMILIES (CASES)	PERSONS (RECIP.)	ADULTS	CHILDREN	PAYMENTS	PAYMENT/ CASE	PAYMENT/ RECIP.	FAMILIES (CASES)	PERSONS (RECIP.)	TOTAL PAYMENTS	FAMILIES (CASES)	PERSONS (RECIP.)	TOTAL PAYMENTS	
ARIZONA	11	33	14	19	459	41.73	13.91	(3)	(14)	(206)	(3)	(14)	(267)	
DISTRICT I														
MARICOPA	4	9	2	7	217	54.25	24.11	(2)	(9)	(82)	0	0	(40)	
DISTRICT II														
PIMA	3	10	6	4	103	34.33	10.30	(1)	(6)	24	0	(3)	(84)	
DISTRICT III														
APACHE	0	0	0	0	0	0.00	0.00	0	0	0	(1)	(4)	(73)	
COCONINO	0	0	0	0	0	0.00	0.00	0	0	0	(1)	(3)	(30)	
NAVAJO	0	0	0	0	0	0.00	0.00	0	0	0	0	0	0	
YAVAPAI	0	0	0	0	0	0.00	0.00	(1)	(1)	(62)	0	0	0	
DISTRICT IV														
LA PAZ	2	5	2	3	32	16.00	6.40	2	5	32	2	5	32	
MOHAVE	1	5	2	3	94	94.00	18.80	0	1	35	1	5	94	
YUMA	1	4	2	2	13	13.00	3.25	0	0	(61)	(1)	(5)	(32)	
DISTRICT V														
GILA	0	0	0	0	0	0.00	0.00	0	0	0	0	0	0	
PINAL	0	0	0	0	0	0.00	0.00	(1)	(4)	(92)	(1)	(4)	(7)	
DISTRICT VI														
COCHISE	0	0	0	0	0	0.00	0.00	0	0	0	(2)	(5)	(127)	
GRAHAM	0	0	0	0	0	0.00	0.00	0	0	0	0	0	0	
GREENLEE	0	0	0	0	0	0.00	0.00	0	0	0	0	0	0	
SANTA CRUZ	0	0	0	0	0	0.00	0.00	0	0	0	0	0	0	

EXCLUDES: PRIOR MONTH NET TOTALS OF 32 CASES; 99 RECIPIENTS; \$1,649.

CHART 1C

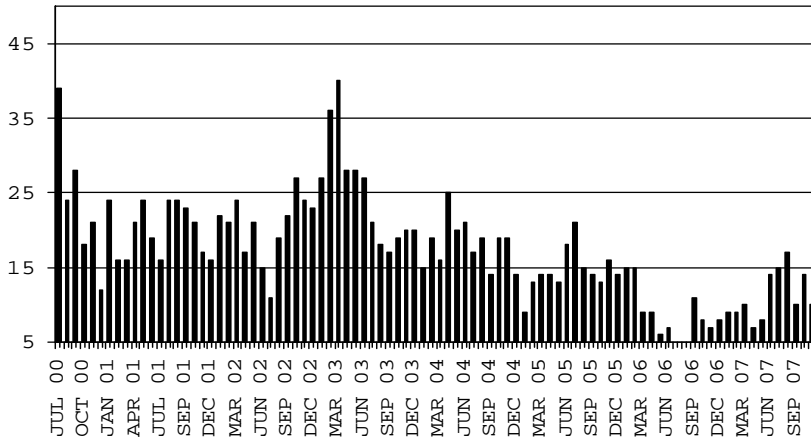
CASH ASSISTANCE UNEMPLOYED PARENT PROGRAM

CASES WITH GRANT UNDER \$100

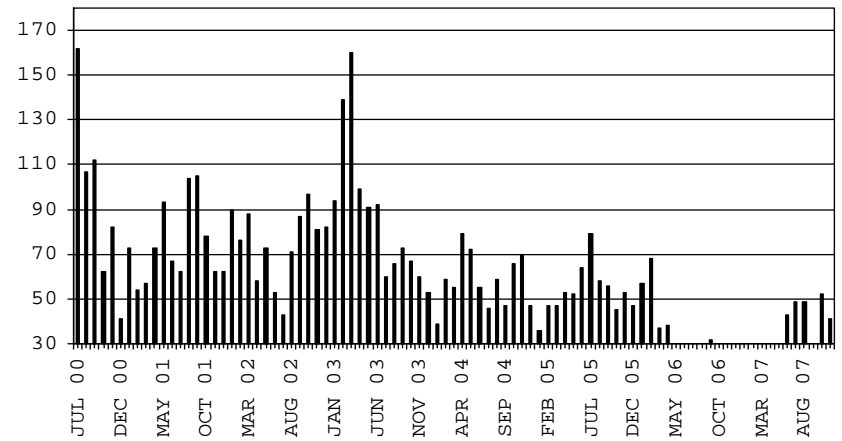
COMPARISON OF CASES, RECIPIENTS, PAYMENTS & AVERAGE PAYMENTS

FOR 2000, 2001, 2002, 2003, 2004, 2005, 2006 & 2007

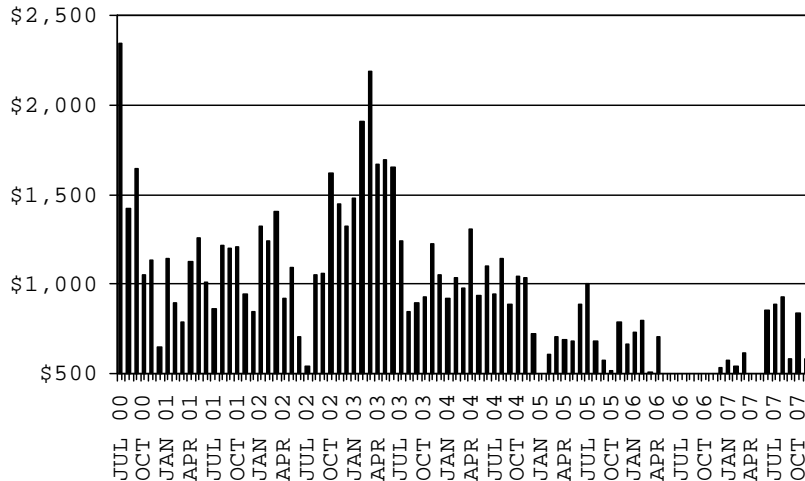
CASES



RECIPIENTS



PAYMENTS



AVERAGE PAYMENTS PER RECIPIENT

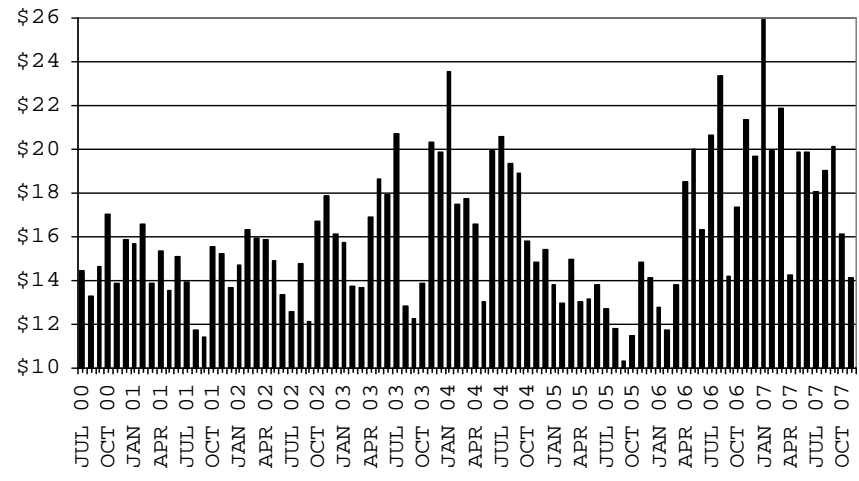


TABLE 2
GENERAL ASSISTANCE: ARIZONA 1,

	CHANGE FROM										
	DECEMBER, 2007					NOVEMBER, 2007			DECEMBER, 2006		
	NUMBER OF CASES	PERSONS (RECIP.)	TOTAL PAYMENTS	AVERAGE PAYMENT/ CASE	AVERAGE PAYMENT/ RECIP.	NUMBER OF CASES	PERSONS (RECIP.)	TOTAL PAYMENTS	NUMBER OF CASES	PERSONS (RECIP.)	TOTAL PAYMENTS
ARIZONA	1,325	1,330	201,881	152.36	151.79	(21)	(20)	(3,779)	10	9	2,573
DISTRICT I											
MARICOPA	557	558	85,089	152.76	152.49	10	11	995	18	19	3,487
DISTRICT II											
PIMA	343	343	51,559	150.32	150.32	(22)	(22)	(3,072)	20	19	2,757
DISTRICT III											
APACHE	12	13	1,920	160.00	147.69	2	2	382	(10)	(11)	(1,593)
COCONINO	19	20	2,748	144.63	137.40	(1)	(1)	(122)	(4)	(4)	(513)
NAVAJO	41	41	6,315	154.02	154.02	0	0	7	15	14	2,439
YAVAPAI	52	53	8,212	157.92	154.94	(2)	(2)	(474)	(10)	(9)	(1,359)
DISTRICT IV											
LA PAZ	108	109	15,976	147.93	146.57	(5)	(5)	(679)	(27)	(26)	(4,574)
MOHAVE	10	10	1,405	140.50	140.50	(1)	(1)	(43)	3	3	259
YUMA	71	72	10,680	150.42	148.33	(1)	(1)	(312)	2	3	(152)
	27	27	3,891	144.11	144.11	(3)	(3)	(324)	(32)	(32)	(4,681)
DISTRICT V											
GILA	129	129	19,893	154.21	154.21	(6)	(6)	(1,567)	22	21	4,214
PINAL	28	28	4,183	149.39	149.39	(2)	(2)	(422)	6	6	1,424
	101	101	15,710	155.54	155.54	(4)	(4)	(1,145)	16	15	2,790
DISTRICT VI											
COCHISE	64	64	10,169	158.89	158.89	3	3	751	(14)	(14)	(2,285)
GRAHAM	50	50	7,908	158.16	158.16	1	1	405	(5)	(5)	(910)
GREENLEE	6	6	1,038	173.00	173.00	1	1	173	(8)	(8)	(1,384)
SANTA CRUZ	4	4	627	156.75	156.75	0	0	0	3	3	454
	4	4	596	149.00	149.00	1	1	173	(4)	(4)	(445)

1/EXCLUDES: PRIOR MONTH NET TOTALS OF : 208 CASES; 209 RECIPIENTS; \$45,118.
REFUGEE RESETTLEMENT PROGRAM: 144 CASES; 202 RECIPIENTS; \$39,704.

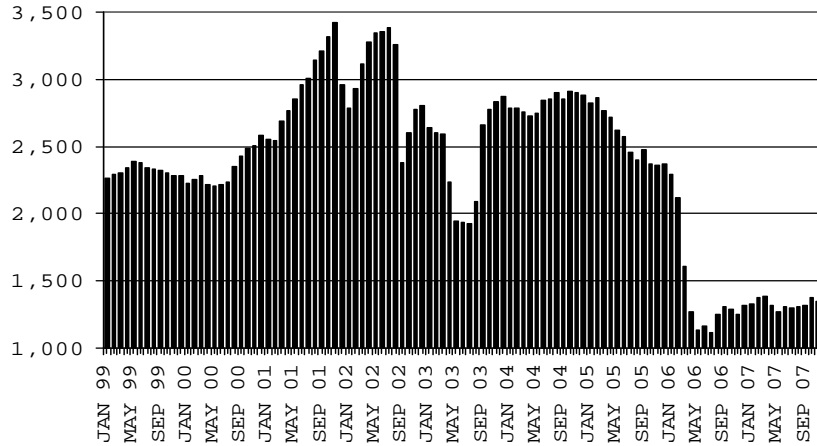
CHART 2

GENERAL ASSISTANCE PROGRAM

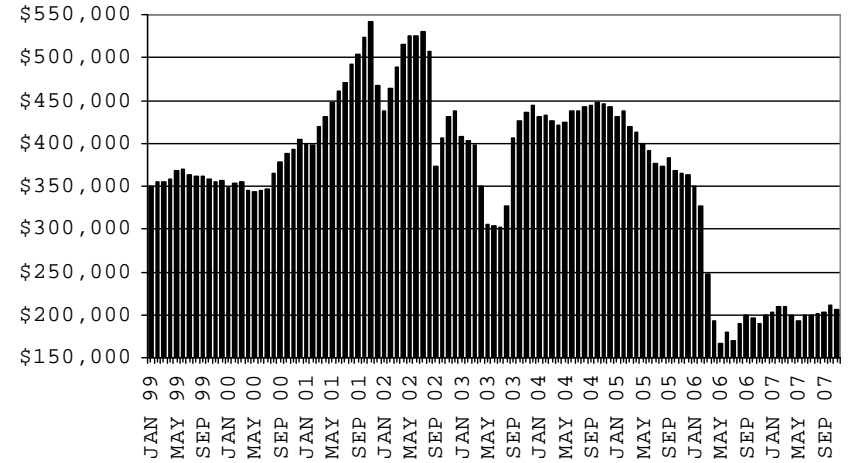
COMPARISON OF CASES, PAYMENTS & AVERAGE PAYMENTS

FOR 1999, 2000, 2001, 2002, 2003, 2004, 2005, 2006 & 2007

CASES



PAYMENTS



AVERAGE PAYMENT PER CASE

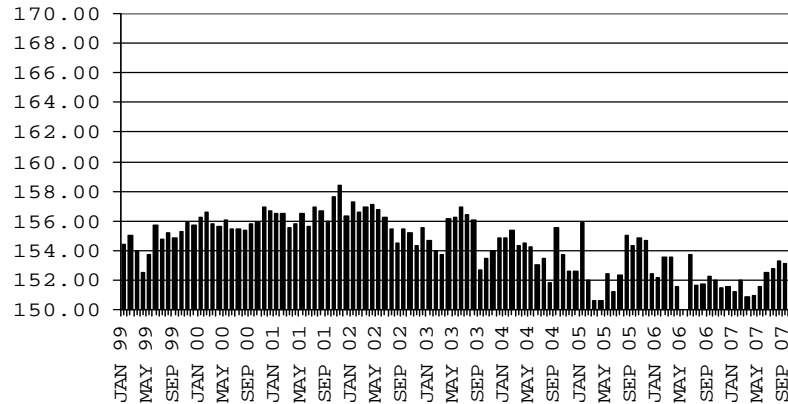


TABLE 4

TUBERCULOSIS CONTROL: ARIZONA 1/

	DECEMBER, 2007					CHANGE FROM					
						NOVEMBER, 2007			DECEMBER, 2006		
	NUMBER OF CASES	PERSONS (RECIP.)	TOTAL PAYMENTS	AVERAGE PAYMENT/ CASE	AVERAGE PAYMENT/ RECIP.	NUMBER OF CASES	PERSONS (RECIP.)	TOTAL PAYMENTS	NUMBER OF CASES	PERSONS (RECIP.)	TOTAL PAYMENTS
ARIZONA	9	9	1,065	118.33	118.33	(3)	(3)	(317)	(5)	(5)	(647)
DISTRICT I											
MARICOPA	8	8	957	119.63	119.63	(3)	(3)	(317)	(5)	(5)	(647)
DISTRICT II											
PIMA	0	0	0	0.00	0.00	0	0	0	(1)	(1)	(108)
DISTRICT III	1	1	108	108.00	108.00	0	0	0	1	1	108
APACHE	0	0	0	0.00	0.00	0	0	0	0	0	0
COCONINO	0	0	0	0.00	0.00	0	0	0	0	0	0
NAVAJO	0	0	0	0.00	0.00	0	0	0	0	0	0
YAVAPAI	1	1	108	108.00	108.00	0	0	0	1	1	108
DISTRICT IV	0	0	0	0.00	0.00	0	0	0	0	0	0
LA PAZ	0	0	0	0.00	0.00	0	0	0	0	0	0
MOHAVE	0	0	0	0.00	0.00	0	0	0	0	0	0
YUMA	0	0	0	0.00	0.00	0	0	0	0	0	0
DISTRICT V	0	0	0	0.00	0.00	0	0	0	0	0	0
GILA	0	0	0	0.00	0.00	0	0	0	0	0	0
PINAL	0	0	0	0.00	0.00	0	0	0	0	0	0
DISTRICT VI	0	0	0	0.00	0.00	0	0	0	0	0	0
COCHISE	0	0	0	0.00	0.00	0	0	0	0	0	0
GRAHAM	0	0	0	0.00	0.00	0	0	0	0	0	0
GREENLEE	0	0	0	0.00	0.00	0	0	0	0	0	0
SANTA CRUZ	0	0	0	0.00	0.00	0	0	0	0	0	0

1/EXCLUDES: PRIOR MONTH NET TOTALS OF : 0 CASES; 0 RECIPIENTS; \$0.

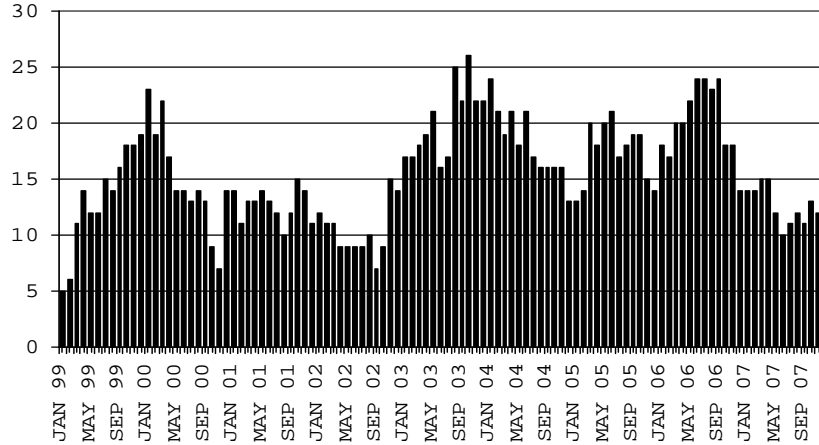
CHART 4

TUBERCULOSIS CONTROL PROGRAM

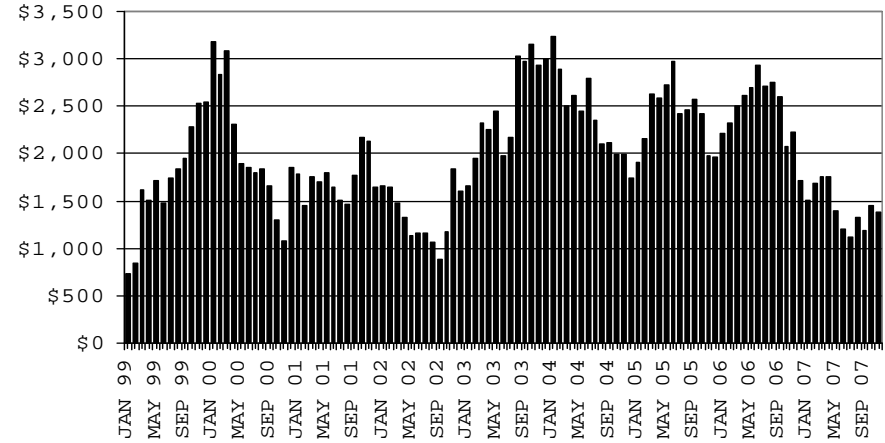
COMPARISON OF CASES, PAYMENTS & AVERAGE PAYMENTS

FOR 1999, 2000, 2001, 2002, 2003, 2004, 2005, 2006 & 2007

CASES



PAYMENTS



AVERAGE PAYMENT PER CASE

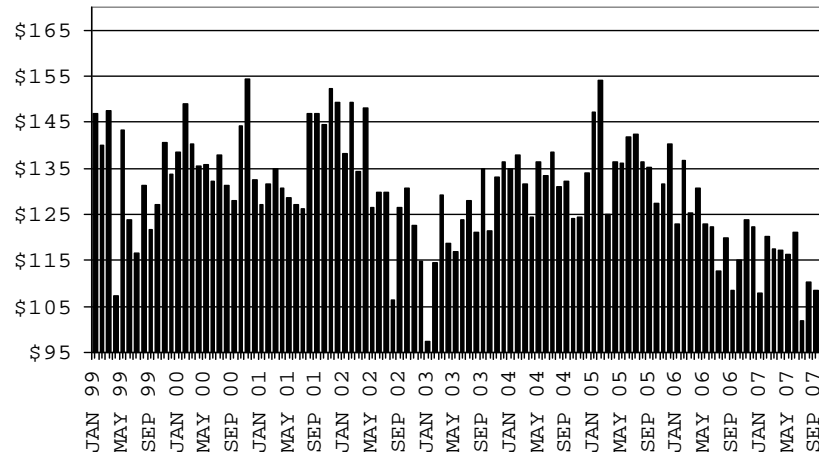


TABLE 5

**SUPPLEMENTAL PAYMENTS PROGRAM: ARIZONA 1,
 BASED ON HB 2535 SPP IS SUSPENDED FROM JULY, 2003 THROUGH JUNE, 2004
 CHANGE FROM**

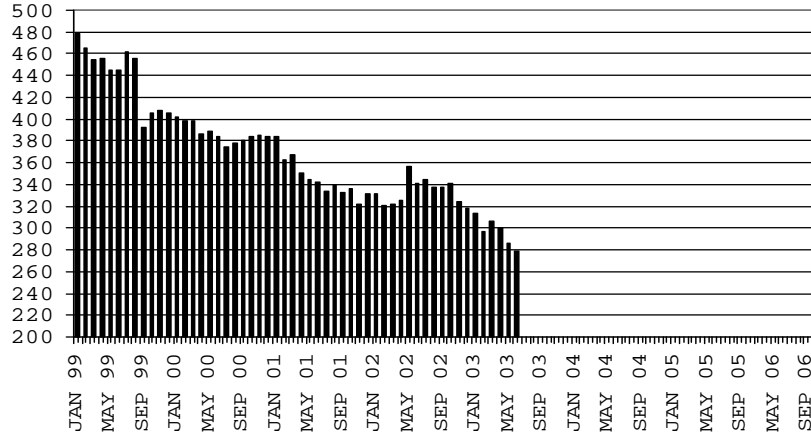
	DECEMBER, 2007			NOVEMBER, 2007		DECEMBER, 2006	
	NUMBER OF PAYMENTS	TOTAL PAYMENTS	AVERAGE PAYMENT	NUMBER OF PAYMENTS	TOTAL PAYMENTS	NUMBER OF PAYMENTS	TOTAL PAYMENTS
ARIZONA	0	0	0	0	0	0	0
DISTRICT I							
MARICOPA	0	0	0	0	0	0	0
DISTRICT II							
PIMA	0	0	0	0	0	0	0
DISTRICT III							
APACHE	0	0	0	0	0	0	0
COCONINO	0	0	0	0	0	0	0
NAVAJO	0	0	0	0	0	0	0
YAVAPAI	0	0	0	0	0	0	0
DISTRICT IV							
LA PAZ	0	0	0	0	0	0	0
MOHAVE	0	0	0	0	0	0	0
YUMA	0	0	0	0	0	0	0
DISTRICT V							
GILA	0	0	0	0	0	0	0
PINAL	0	0	0	0	0	0	0
DISTRICT VI							
COCHISE	0	0	0	0	0	0	0
GRAHAM	0	0	0	0	0	0	0
GREENLEE	0	0	0	0	0	0	0
SANTA CRUZ	0	0	0	0	0	0	0

1/EXCLUDES: PRIOR MONTH NET TOTALS OF : 0 CASES (PERSONS); \$0.
 1/TABLE 5 IS BASED ON THE LOCATION OF THE OFFICE THAT PROCEEDS THE APPLICATION.

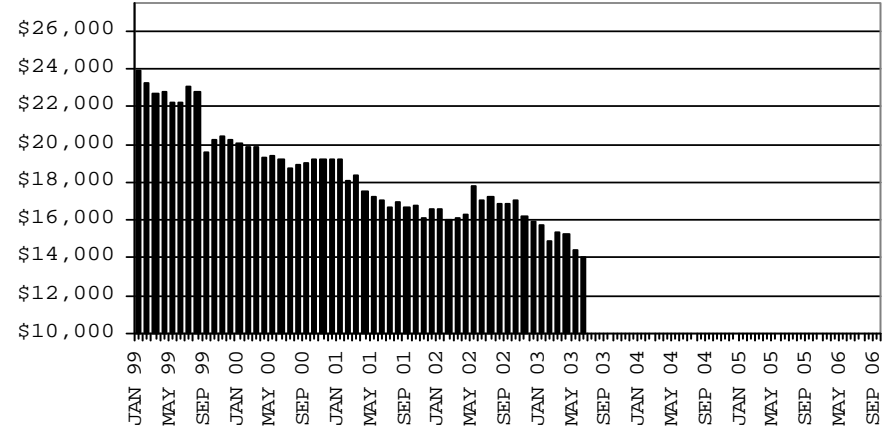
CHART 5

SUPPLEMENTAL PAYMENTS PROGRAM COMPARISON OF CASES, PAYMENTS & AVERAGE PAYMENTS FOR 1999, 2000, 2001, 2002, 2003, 2004, 2005, 2006 & 2007

CASES



PAYMENTS



AVERAGE PAYMENT PER CASE

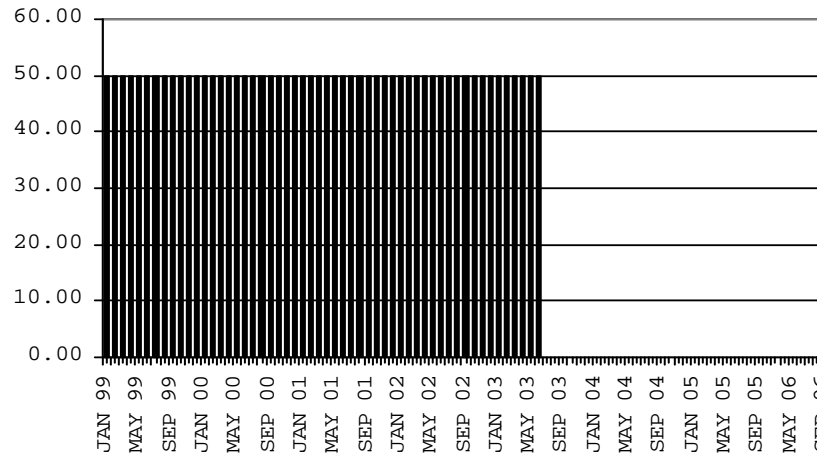


TABLE 6

FOOD STAMP PROGRAM: ARIZONA 1/

	CHANGE FROM										
	DECEMBER, 2007					NOVEMBER, 2007			DECEMBER, 2006		
	HOUSEHOLDS	PERSONS	TOTAL COUPON ISSUANCE	AVERAGE ALLOT./ HOUSEHOLD	AVERAGE ALLOT./ PERSON	HOUSEHOLDS	PERSONS	TOTAL COUPON ISSUANCE	HOUSEHOLDS	PERSONS	TOTAL COUPON ISSUANCE
ARIZONA	245,225	597,929	61,003,345	248.76	102.02	3,957	8,670	367,896	25,609	58,802	8,193,442
DISTRICT I											
MARICOPA	122,127	298,465	31,053,657	254.27	104.04	1,874	4,601	186,869	14,173	34,225	4,599,468
DISTRICT II											
PIMA	43,597	100,092	10,196,098	233.87	101.87	655	1,587	35,152	4,025	8,571	1,219,136
DISTRICT III											
APACHE	6,252	19,257	1,873,953	299.74	97.31	(42)	(281)	(27,864)	45	(155)	86,993
COCONINO	5,593	16,253	1,561,732	279.23	96.09	179	417	35,506	532	962	163,286
NAVAJO	9,615	26,821	2,643,596	274.94	98.56	242	438	52,856	776	1,935	316,276
YAVAPAI	6,812	13,881	1,384,354	203.22	99.73	283	618	56,260	712	1,568	195,605
DISTRICT IV											
LA PAZ	1,302	2,874	297,051	228.15	103.36	8	14	606	27	47	8,309
MOHAVE	11,315	23,971	2,497,051	220.69	104.17	385	759	63,041	1,560	3,209	423,994
YUMA	10,363	27,968	2,640,699	254.82	94.42	(40)	(308)	(80,189)	809	1,765	235,567
DISTRICT V											
GILA	3,648	8,535	885,561	242.75	103.76	131	321	28,866	335	603	88,988
PINAL	12,604	31,610	3,250,002	257.85	102.82	66	12	(23,654)	2,064	5,212	653,607
DISTRICT VI											
COCHISE	7,017	15,595	1,529,723	218.00	98.09	175	415	36,479	424	537	115,961
GRAHAM	2,101	5,002	482,897	229.84	96.54	31	68	4,368	24	18	19,414
GREENLEE	235	486	49,796	211.90	102.46	(8)	(40)	(3,579)	(38)	(100)	(5,290)
SANTA CRUZ	2,644	7,119	657,175	248.55	92.31	18	49	3,179	141	405	72,128

1/EXCLUDES: PRIOR MONTH NET TOTALS OF : 8,551 CASES; 22,391 RECIPIENTS; \$1,071,352.
 AGED CANCELATIONS: 0 CASES; 0 RECIPIENTS; 0.
 FS COUPON CONVERSIONS: 0 CASES; 0 RECIPIENTS; \$0.
 FS REINSTATED: 0 CASES; \$0.
 FS ZERO PAY: 4,483 CASES; 17,814 RECIPIENTS.

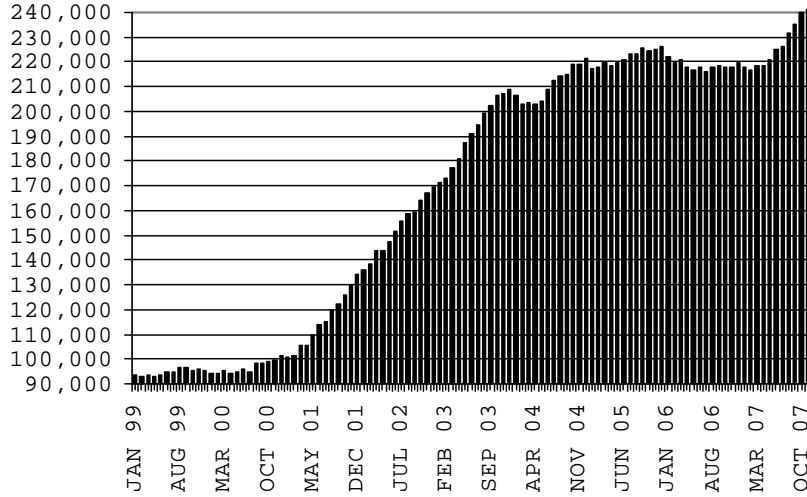
CHART 6

FOOD STAMPS PROGRAM

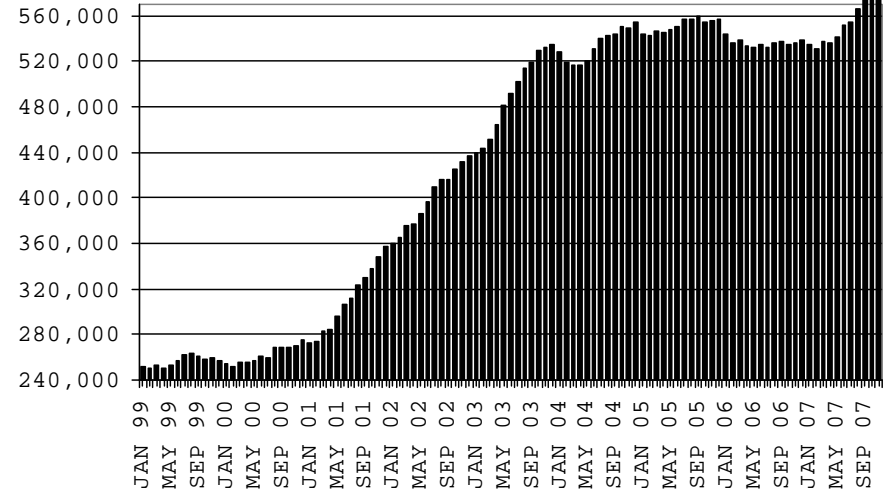
COMPARISON OF HOUSEHOLDS, RECIPIENTS, PAYMENTS & AVERAGE PAYMENTS

FOR 1999, 2000, 2001, 2002, 2003, 2004, 2005, 2006 & 2007

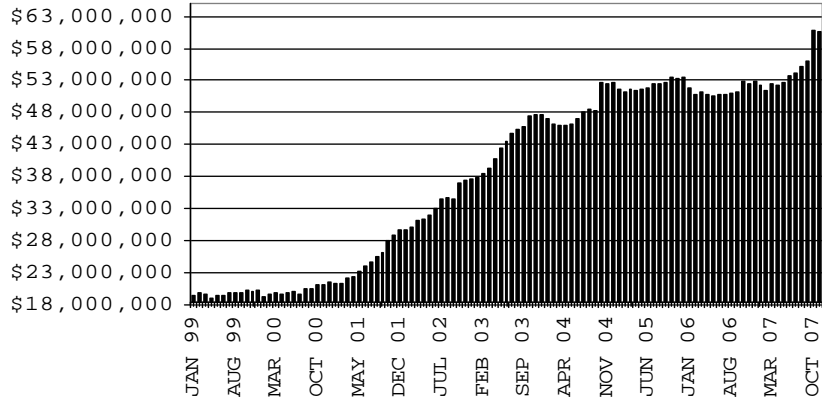
HOUSEHOLDS



RECIPIENTS



TOTAL PAYMENTS



AVERAGE PAYMENT PER HOUSEHOLD

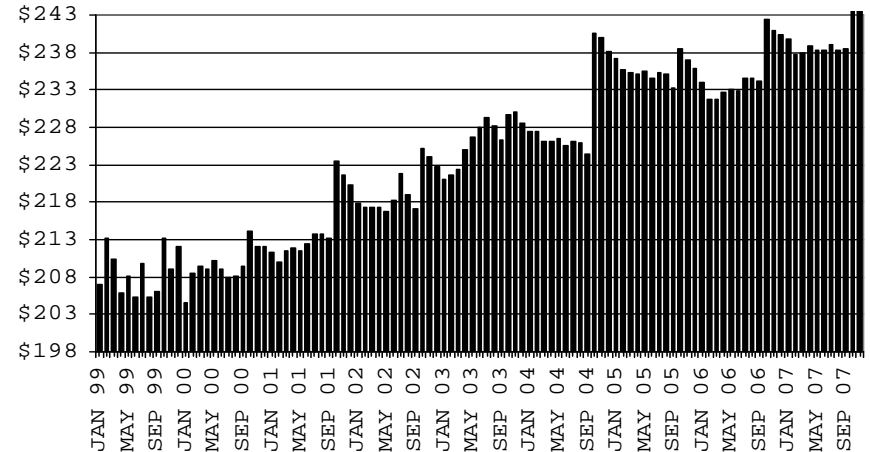


TABLE 7A
MEDICAL ASSISTANCE PROGRAM
RECIPIENTS

DECEMBER, 2007

	SOBRA WOMAN 133% FPL	SOBRA CHILD	ADULT W/O CHILD 100% FPL	FOSTER CARE	1931 36% FPL	FEDERAL EMERGENCY SERVICES	INFANTS	ADULT W/O CHILD 40% FPL	MEDICAL W/SPEND DOWN	SOBRA WOMAN 100% FPL	SOBRA CHILD 100% FPL	TRANSITIONAL MEDICAL T1 - T4	1931 100% FPL	YATI	OTHER	TOTAL CASES
ARIZONA	11,388	62,063	37,942	9,704	259,918	85,351	50,514	90,163	5,259	3,278	160,821	43,492	76,722	235	22,464	919,314
DISTRICT I																
MARICOPA	5,831	34,595	16,158	4,808	135,373	65,643	30,394	39,460	2,824	1,655	89,109	21,066	35,700	110	10,867	493,593
DISTRICT II																
PIMA	1,745	9,439	7,485	2,769	40,353	10,718	7,110	16,530	801	565	25,496	7,172	13,922	75	4,058	148,238
DISTRICT III																
APACHE	244	1,352	853	39	10,334	101	949	4,252	76	88	3,695	1,130	2,261	0	356	25,730
COCONINO	376	1,393	1,154	124	6,917	529	1,207	2,910	90	100	3,627	1,239	2,085	12	341	22,104
NAVAJO	376	2,125	1,336	116	11,041	325	1,414	4,741	160	123	4,417	1,504	2,707	2	551	30,938
YAVAPAI	452	1,783	1,677	432	5,476	1,578	1,397	2,834	224	93	4,055	1,315	2,418	11	971	24,716
DISTRICT IV																
LA PAZ	37	239	214	15	1,190	186	174	566	35	15	563	229	304	0	152	3,919
MOHAVE	484	2,124	1,962	229	9,357	958	1,528	4,681	315	156	6,409	1,949	3,603	2	1,200	34,957
YUMA	576	2,553	2,274	243	11,001	2,130	1,923	3,247	189	152	7,845	2,807	4,835	1	1,188	40,964
DISTRICT V																
GILA	137	739	519	73	4,050	129	466	1,968	100	31	1,489	507	934	2	271	11,415
PINAL	605	3,629	1,842	501	13,819	1,728	2,235	5,018	232	160	6,868	2,136	3,547	11	1,168	43,499
DISTRICT VI																
COCHISE	259	1,056	1,318	251	6,108	682	840	2,324	122	68	3,546	1,178	2,218	7	757	20,734
GRAHAM	133	424	396	58	2,012	79	366	838	20	24	1,111	549	651	2	125	6,788
GREENLEE	31	44	37	12	296	6	61	95	6	1	105	55	64	0	24	837
SANTA CRUZ	102	568	717	34	2,591	559	450	699	65	47	2,486	656	1,473	0	435	10,882

TABLE 7B

MEDICAL ASSISTANCE PROGRAM

RECIPIENTS

CHANGE FROM

NOVEMBER, 2007

	SOBRA WOMAN 133% FPL	SOBRA CHILD	ADULT W/O CHILD 100% FPL	FOSTER CARE	1931 36% FPL	FEDERAL EMERGENCY SERVICES	INFANTS	ADULT W/O CHILD 40% FPL	MEDICAL W/SPEND DOWN	SOBRA WOMAN 100% FPL	SOBRA CHILD 100% FPL	TRANSITIONAL MEDICAL T1 - T4	1931 100% FPL	YATI	OTHER	TOTAL CASES
ARIZONA	(108)	103	225	(10)	749	162	(144)	1,064	(40)	(43)	1,333	717	196	(6)	236	4,434
DISTRICT I																
MARICOPA	(87)	265	153	(19)	1,078	176	(82)	548	(69)	(18)	949	43	264	(2)	17	3,216
DISTRICT II																
PIMA	4	(33)	73	(17)	(336)	60	(5)	131	6	17	367	229	76	(4)	42	610
DISTRICT III																
APACHE	(25)	(13)	(6)	1	(157)	4	(25)	5	3	(6)	1	4	0	0	11	(203)
COCONINO	(6)	(12)	5	(1)	129	1	(2)	16	4	(5)	(3)	(44)	3	1	(6)	80
NAVAJO	3	12	48	2	126	4	17	85	5	(7)	78	(77)	(12)	0	31	315
YAVAPAI	2	(17)	14	13	11	15	(12)	32	(19)	1	79	(5)	60	(4)	21	191
DISTRICT IV																
LA PAZ	(1)	6	5	(3)	(2)	(11)	0	9	12	(1)	(14)	2	(13)	0	9	(2)
MOHAVE	7	(10)	(16)	(1)	63	(21)	(46)	135	(3)	0	(4)	82	0	0	4	190
YUMA	(10)	(37)	(45)	(6)	(336)	(73)	(6)	(77)	0	(29)	(140)	317	(110)	0	16	(536)
DISTRICT V																
GILA	(14)	(9)	(12)	17	60	(10)	11	138	9	6	43	50	(20)	2	19	290
PINAL	14	6	10	3	43	(1)	2	43	8	1	13	35	2	0	3	182
	(28)	(15)	(22)	14	17	(9)	9	95	1	5	30	15	(22)	2	16	108
DISTRICT VI																
COCHISE	14	(55)	(21)	(1)	119	24	(6)	54	2	(5)	44	21	2	1	31	224
GRAHAM	9	(3)	25	1	26	3	9	(3)	3	0	(25)	46	(25)	0	(1)	65
GREENLEE	1	11	(1)	0	(13)	0	2	(8)	0	0	(3)	(12)	4	0	1	(18)
SANTA CRUZ	(5)	(2)	3	4	(19)	(10)	1	(1)	7	4	(39)	61	(33)	0	41	12

TABLE 7C
MEDICAL ASSISTANCE PROGRAM
RECIPIENTS

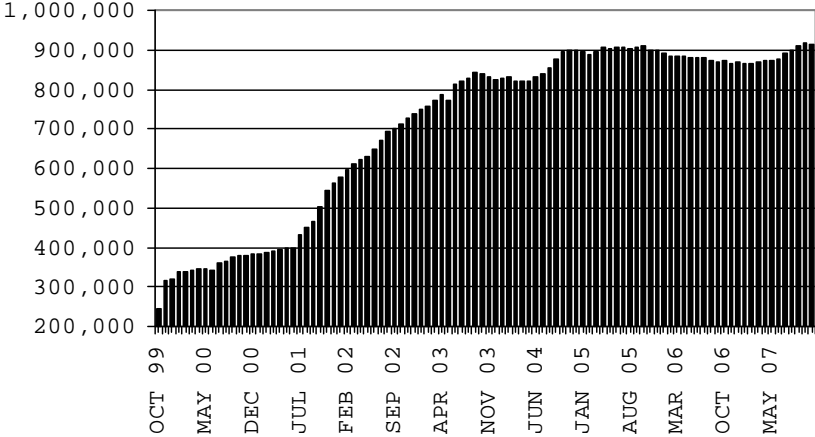
CHANGE FROM
DECEMBER, 2006

	SOBRA WOMAN 133% FPL	SOBRA CHILD	ADULT W/O CHILD 100% FPL	FOSTER CARE	1931 36% FPL	FEDERAL EMERGENCY SERVICES	INFANTS	ADULT W/O CHILD 40% FPL	MEDICAL W/SPEND DOWN	SOBRA WOMAN 100% FPL	SOBRA CHILD 100% FPL	TRANSITIONAL MEDICAL T1 - T4	3E 1931 100% FPL	YATI	OTHER	TOTAL CASES
ARIZONA	511	3,435	1,879	909	11,120	2,790	549	12,133	(86)	95	12,627	(3,212)	5,793	46	2,804	51,393
DISTRICT I																
MARICOPA	278	2,643	1,016	357	8,772	2,817	197	6,224	(137)	73	8,519	(1,848)	3,549	14	1,222	33,696
DISTRICT II																
PIMA	66	284	276	308	1,209	285	121	2,304	109	45	1,491	(484)	966	17	525	7,522
DISTRICT III																
APACHE	(21)	(60)	(45)	3	(359)	0	(70)	211	5	(3)	(40)	(148)	(18)	0	44	(501)
COCONINO	(4)	36	(14)	20	(153)	18	58	257	(32)	(6)	50	(154)	33	6	(10)	105
NAVAJO	44	28	46	(5)	132	29	90	500	7	5	97	(181)	10	(2)	77	877
YAVAPAI	37	28	42	68	286	(5)	35	448	(42)	(7)	315	(377)	266	4	148	1,246
DISTRICT IV																
LA PAZ	(1)	40	(14)	(1)	(122)	(21)	0	19	4	(7)	(24)	76	(46)	0	24	(73)
MOHAVE	(5)	3	205	13	578	(35)	(76)	762	(22)	10	795	275	258	0	196	2,957
YUMA	73	119	213	19	(71)	(210)	(42)	153	(5)	(20)	334	72	284	(2)	210	1,127
DISTRICT V																
GILA	13	(58)	(11)	(7)	63	(32)	3	186	24	(3)	(26)	(20)	34	(1)	3	168
PINAL	(3)	456	200	129	950	12	196	829	(21)	3	980	(167)	357	6	153	4,080
DISTRICT VI																
COCHISE	13	(85)	(1)	4	(39)	(60)	(28)	148	16	1	58	(91)	91	4	96	127
GRAHAM	8	2	(3)	(3)	(156)	10	6	61	(11)	4	38	(111)	(18)	0	14	(159)
GREENLEE	12	1	(8)	2	(29)	(2)	8	(33)	(5)	(7)	(37)	(12)	(9)	0	2	(117)
SANTA CRUZ	1	(2)	(23)	2	59	(16)	51	64	24	7	77	(42)	36	0	100	338

CHART 7

MEDICAL ASSISTANCE PROGRAM COMPARISON OF RECIPIENTS FOR 1999, 2000, 2001, 2002, 2003, 2004, 2005, 2006 & 2007

TOTAL RECIPIENTS



NEW SERIES WHICH INCLUDES 1931