



DEPARTMENT OF ECONOMIC SECURITY

Your Partner For A Stronger Arizona

ARIZONA STATE PLAN FOR THE EMERGENCY FOOD ASSISTANCE PROGRAM (TEFAP)



CONTENTS

Contact Information2

Program Details.....3

State Agency Organization Chart4

Goals and Objectives.....5

Commodity Allocation by County5

Food Bank Eligibility Criteria and Responsibilities6

Participant Eligibility Criteria.....7

CONTACT INFORMATION

CONTACTS

Hunger Relief Program Manager (480) 521-5700
 Hunger Relief Program Specialist (480) 387-9096
 coordinatedhungerreliefprogram@azdes.gov

STATE AGENCY PHYSICAL ADDRESS

Arizona Department of Economic Security
 Division of Aging and Adult Services
 Emergency Services Administration
 Coordinated Hunger Relief Program
 1789 West Jefferson Street, 3rd Floor NW
 Phoenix, AZ 85007

STATE AGENCY MAILING ADDRESS

Arizona Department of Economic Security
 Division of Aging and Adult Services
 Community Service Programs Administration
 Coordinated Hunger Relief Program
 P.O. Box 6123, Mail Drop 6282
 Phoenix, AZ 85005



PROGRAM DETAILS

The Emergency Food Assistance Program (TEFAP) is a Federal program through the US Department of Agriculture (USDA) Food and Nutrition Services that helps supplement the diets of low-income Americans, including elderly people, by providing them with emergency food assistance at no cost.

Eligible recipients will receive TEFAP commodities via an Emergency Food Box (EFB) and/or in the form of a meal which is prepared and distributed through a Congregate Meal Site (Soup Kitchen).

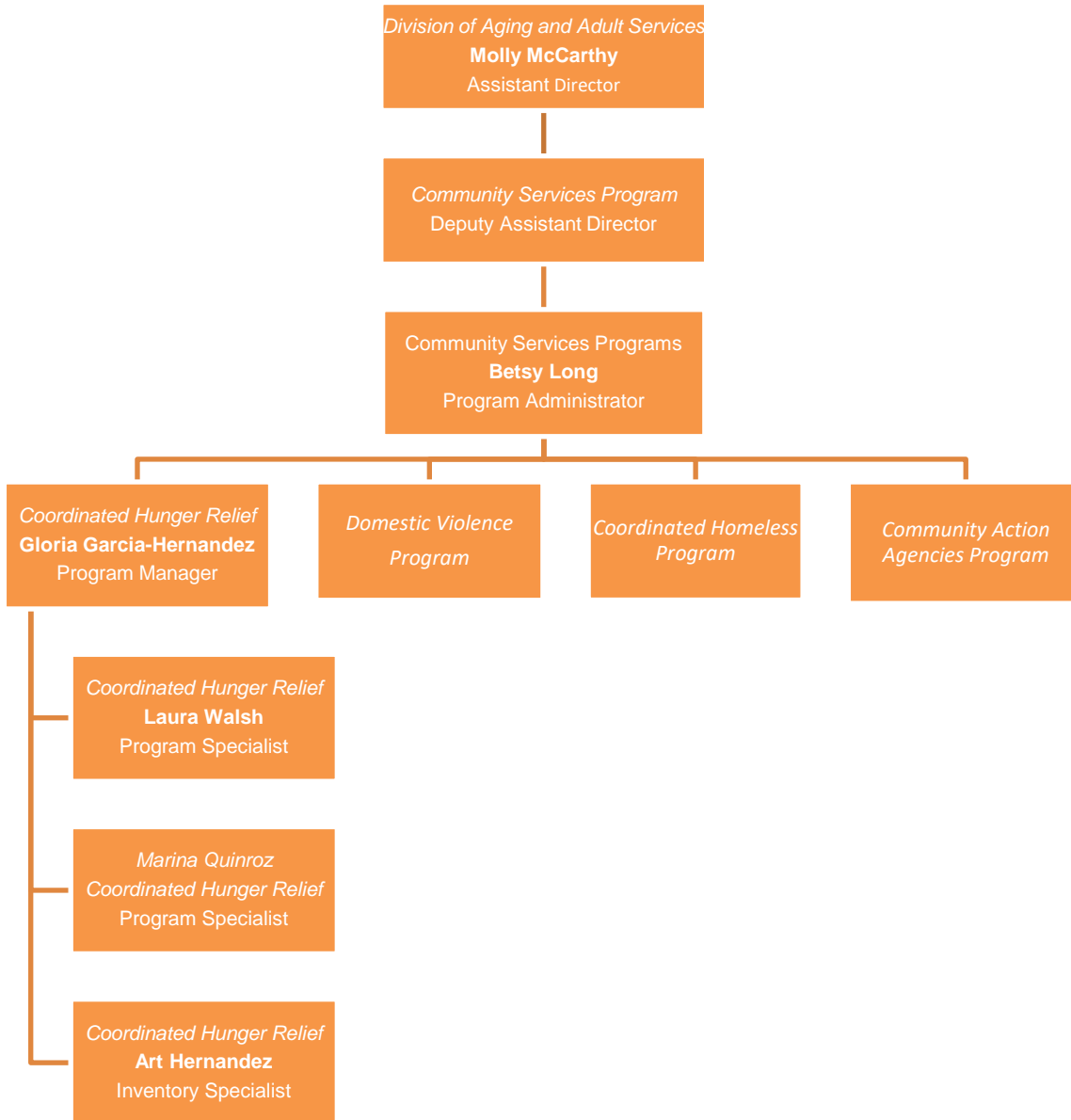
An Emergency Food Box includes a 3-4 day supply of food which may consist of any of the following; USDA TEFAP commodities, private donations, gleaned or purchased food. The amount of food a household receives is in direct relation to the household size. (i.e., a household of 8 will received more food than a household of 3.)

The USDA purchases a variety of nutritious, high quality USDA foods, and makes those foods available to State Distributing Agencies. The amount of food each State receives out of the total amount of food provided is based on the number of unemployed persons and the number of people with incomes below the poverty level in the State. States provide the food to local agencies that they have selected, usually food banks, which in turn distribute the food to local organizations, such as soup kitchens and food pantries that directly serve the public. States also provide the food to other types of local organizations, such as community action agencies, which distribute the foods directly to low-income households.

Arizona is committed to pursuing innovative ways to bring nutritious food to people struggling to put food on the table while also promoting the economic growth and viability of Arizona farmers while bridging the gap between hunger relief agencies and farmers through relationship building. By building farmer relationships, Arizona will increase local produce donated to distribution sites while supporting local farming communities, limiting food waste and provide food to individuals in need. See Attachment A for Farm to Food Bank Proposal.



STATE AGENCY ORGANIZATION CHART



GOALS AND OBJECTIVES

The goal for the Coordinated Hunger Relief Program is to facilitate the maximum volume of United States Department of Agriculture (USDA) commodity products, donated food and Arizona Statewide Gleaning products to reach individuals most in need through an efficient and effective system that complies with State and Federal rules and regulations.

Comprehensive objectives include:

- integrating The Emergency Food Assistance Program (TEFAP) into CHRP activities in order to maximize and leverage additional resources for hungry people
- implementing and maintaining consistent and realistic program eligibility and distribution procedures statewide for regional food bank warehouses, congregate meal sites and distribution sites
- coordinating with other food programs internally within DES, and externally with other public and private agencies
- increasing the amounts of fresh fruits and vegetables distributed to low-income recipients of the CHRP
- developing and maintaining a reliable and cost-effective statewide food distribution system
- ensuring compliance with all TEFAP requirements by DES and all distribution points of access.

COMMODITY ALLOCATION BY COUNTY

DES/CHRP apportions the yearly USDA allocation of food to each county according to its fair share. The amount of food provided to each county is roughly based on 60 percent of the number of persons in households within the distribution area having incomes below the Federal Poverty Level and 40 percent on the number of unemployed persons within that area, adjusted by commodity availability, demographics, geographic impact, and historical data.

Each Food Bank has assigned counties. Food Banks must secure DES/CHRP agreements with its Distribution Sites and Congregate Meal Sites for commodity distribution to eligible households or in congregate meals.

Each of Arizona's 15 counties is served by an Arizona-contracted Food Bank, except for Maricopa County which is served by two because of the high population density. The names and addresses of all Food Banks with which DES has entered into agreement are as follows:

ST. MARY'S FOOD BANK ALLIANCE

2831 North 31st Avenue, Phoenix, AZ 85009

(602) 343-3102 [Website](#)

Service Counties: Apache, Coconino, Maricopa, (west of Central Ave.) Mohave, Navajo, Pinal, Yavapai

UNITED FOOD BANK

245 South Nina Drive, Mesa, AZ 85210

(480) 926-4897 [Website](#)

Service Counties: Gila, Maricopa (east of Central Ave.)



COMMUNITY FOOD BANK OF SOUTHERN ARIZONA

3003 North Country Club Road, Tucson, AZ 85726

(520) 622-0525 [Website](#)

Service Counties: Cochise, Graham, Greenlee, Pima, Santa Cruz

YUMA COMMUNITY FOOD BANK

2404 East 24th Street, Yuma, AZ 85365

(928) 343-1243 [Website](#)

Service Counties: La Paz, Yuma

FOOD BANK ELIGIBILITY CRITERIA AND RESPONSIBILITIES

The DES/CHRP contracts with Food Banks on a competitive basis in accordance with the Arizona Procurement Code, Arizona Revised Statutes (ARS)§41- 2500, based on the Food Administration Service Specification. Food Banks's must:

1. Have a signed contract/agreement on file with the Arizona DES
2. Comply with all applicable federal and state laws and regulations governing TEFAP and food warehouses.
3. Comply with all contract components to include reporting requirements and budget items; and
4. Comply with all policies and procedures as outlined in the Arizona Coordinated Hunger Relief - The Emergency Food Assistance Program (TEFAP) Commodity Senior Food Program (CSFP) Policy and Procedure Manual

CHRP contracts with Food Bank warehouses who receive direct shipments of commodities from the USDA, and distribute TEFAP food directly to households, congregate meal (soup kitchen) sites or other distribution sites in their respective service region.

Distribution Sites must report monthly to the Food Banks the number of households, individuals served, number of emergency food boxes distributed and any inventory remaining at the end of each month.

Each Food Bank provides a monthly inventory report to CHRP that details the commodities utilized in distributions, and inventory balances at their warehouses(s). They must also report the total number of households served, individuals served, emergency food boxes distributed, and meals provided which incorporated commodities in the meals served.

CHRP requires the Regional Food Banks to distribute all CHRP emergency food within five (5) months of receipt.



PARTICIPANT ELIGIBILITY CRITERIA

CHRP has established eligibility criteria and procedures for receipt of USDA commodities under TEFAP in accordance with 7 CFR, Part 251.

Eligibility for home consumption of commodities is based on self-declared income and geographical location. A household that is at or below 185% of the Federal Poverty Income Guidelines may receive Emergency Food if they reside in the state. No specific length of residency is required. Any household receiving Nutrition Assistance/Food Stamps is categorically eligible to receive TEFAP commodities.

Current income eligibility requirements are listed online at des.az.gov/services/basic-needs/food-assistance/emergency-food-assistance. Federal regulations prohibit DES/CHRP from requiring a means test of income eligibility. (Final Rule, Sec. 251.5).

Congregate Meal Sites (soup kitchens) providing prepared meals must demonstrate to DES/CHRP or the contracting Food Bank that they serve predominantly needy persons. The sites are required to report meal or plate count served.

